

Submit 1 Copy To Appropriate District

## Office

District I – (575) 393-6161  
 1625 N. French Dr., Hobbs, NM 88240  
 District II – (575) 748-1283  
 811 S. First St., Artesia, NM 88210  
 District III – (505) 334-6178  
 1000 Rio Brazos Rd., Aztec, NM 87410  
 District IV – (505) 476-3460  
 1220 S. St. Francis Dr., Santa Fe, NM  
 87505

State of New Mexico  
 Energy, Minerals and Natural Resources

Form C-103  
 Revised July 18, 2013

OIL CONSERVATION DIVISION  
 1220 South St. Francis Dr.  
 Santa Fe, NM 87505

WELL API NO.

**30-015-02614**

5. Indicate Type of Lease

STATE ☒ FEE ☐

6. State Oil &amp; Gas Lease No.

**647**

7. Lease Name or Unit Agreement Name

**Empire Abo Unit**

8. Well Number

**023B**

9. OGRID Number

**873**

10. Pool name or Wildcat

**Empire; Abo**

## SUNDRY NOTICES AND REPORTS ON WELLS

(DO NOT USE THIS FORM FOR PROPOSALS TO DRILL OR TO DEEPEN OR PLUG BACK TO A DIFFERENT RESERVOIR. USE "APPLICATION FOR PERMIT" (FORM C-101) FOR SUCH PROPOSALS.)

1. Type of Well: Oil Well ☒ Gas Well ☐ Other

2. Name of Operator

**Apache Corporation**

3. Address of Operator

**303 Veteran's Airpark Lane, Suite 1000, Midland, TX 79705**

4. Well Location

Unit Letter **G** : **1980** feet from the **N** line and **1980** feet from the **E** lineSection **6** Township **18S** Range **28E** NMPM County **Eddy**

11. Elevation (Show whether DR, RKB, RT, GR, etc.)

**3671' GR**

## 12. Check Appropriate Box to Indicate Nature of Notice, Report or Other Data

## NOTICE OF INTENTION TO:

PERFORM REMEDIAL WORK ☐ PLUG AND ABANDON ☐TEMPORARILY ABANDON ☐ CHANGE PLANS ☐PULL OR ALTER CASING ☐ MULTIPLE COMPL ☐DOWNHOLE COMMINGLE ☐CLOSED-LOOP SYSTEM ☐OTHER: ☐

## SUBSEQUENT REPORT OF:

REMEDIAL WORK ☐ ALTERING CASING ☐COMMENCE DRILLING OPNS. ☐ **P AND A** ☒CASING/CEMENT JOB ☐OTHER: ☐

13. Describe proposed or completed operations. (Clearly state all pertinent details, and give pertinent dates, including estimated date of starting any proposed work). SEE RULE 19.15.7.14 NMAC. For Multiple Completions: Attach wellbore diagram of proposed completion or recompletion.

JMR Services, LLC respectfully proposes the attached NOI to P&amp;A this well on behalf of Apache Corporation / Hilcorp Energy

Well plugged 10/18/2025. Wellhead cut and well marker installed 11/11/2025.

Spud Date:

Rig Release Date:

I hereby certify that the information above is true and complete to the best of my knowledge and belief.

SIGNATURE Kelton Woodard TITLE Plugging Agent DATE 11/11/2025Type or print name Kelton Woodard E-mail address: kwoodard@jmrservices.com PHONE: (432) – 618 - 1050**For State Use Only**

APPROVED BY: \_\_\_\_\_ TITLE \_\_\_\_\_ DATE \_\_\_\_\_

Conditions of Approval (if any): \_\_\_\_\_

**Subsequent P&A Report  
Apache Corporation  
Empire Abo Unit 023B  
30-015-02614**

**10/06/25** MIRU.

**10/07/25** Check Pressures on Well: Tubing 60 psi, Casing 60 psi, Surface 0 psi.

**10/08/25** Set and tag CIBP @ 5822'. Circulated 140bbl 10# MLF. Pressure test CSG to 500psi for 30 min. Run CBL from 5822' to 0'.

**10/13/25** Plug (# 1) Spot (17 sxs) class (C) cement From (5822 ft) to (5658 ft). RIH and tagged TOC @ 5665'. Plug (# 2) Spot (17 sxs) class (C) cement From (3610 ft) to (3447 ft). RIH and perf'd @ 2069'. EIR 2.5bbl/min @ 250psi. Plug (# 3) Squeezed (120sxs) class (C) cement from (2069 ft) to (1571 ft).

**10/14/25** RIH and tagged TOC @ 1500'. RIH and perf'd @ 1268'. EIR and Circulate with 130bbl. Plug (# 4) Squeezed (46sxs) class (C) cement from (1268 ft) to (1118 ft). RIH and tagged TOC @ 1117'.

**10/15/25** RIH and perf'd @ 900'. Plug (# 5) Squeezed (25sxs) class (C) cement from (900 ft) to (850 ft). Spoke with (Robert Trujillo) approved to : re squeeze plug. Plug (# 6) Squeezed (25sxs) class (C) cement from (900 ft) to (850 ft). RIH and tagged TOC @ 903'.

**10/16/25** Plug (# 7) Spot (15 sxs) class (C) cement From (830 ft) to (685 ft). RIH and perf'd @ 594'. Plug (# 8) Squeezed (45sxs) class (C) cement from (594 ft) to (444 ft). Tag TOC @ 422'.

**10/17/2025** Cut 5.5" csg @ 349'. Laydown 8 joints of 5.5" csg. Set 8 5/8" CIBP @348'.

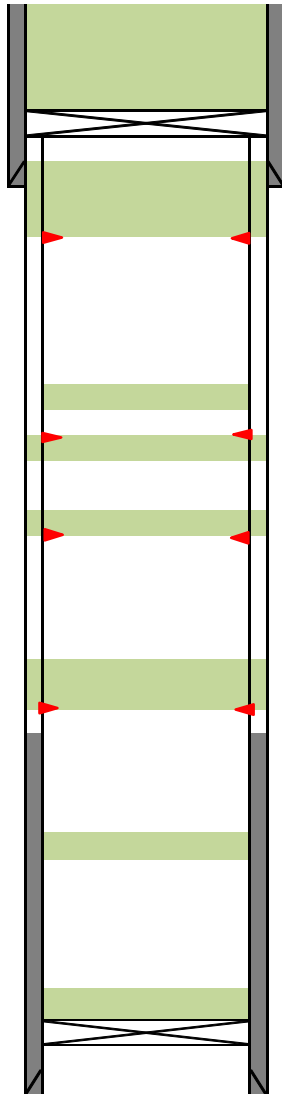
**10/18/25** Test 8 5/8" csg 300 psi. Laydown packer and conduct bubble test. Pass. RIH to 348'. Plug (# 9) Rigged up pump and circulated (100 sxs) class (C) cement from (348 ft) to surface. RDMO.

**11/11/2025** RU wellhead cutoff crew. Cutoff wellhead and anchors. Install above ground P&A marker. Submit paperwork to NMOCD.

Author:	Shyanne @ JMR	Well No.	23B
Well Name	Empire Abo Unit	API #:	30-015-02614
Field/Pool	Empre; Abo	Location:	1980 FNL & 1980 FEL
County	Eddy		Sec 6, T18S, R28E
State	NM		
Spud Date	12/18/1959	GL:	3682'

Description	O.D.	Grade	Weight	Depth	Hole	Cmt Sxs	FOC
Surface Csg	8 5/8	J-55	24#	551	11	250	0
Prod Csg	5 1/2	J-55	14#	6,241	7 7/8	850	4,950

Formation Tops	
Yates	352
Queen	1218
Greyburg	1671
SA	2019
Glorieta	3558
Abo	6131



Plug (# 9) Rigged up pump and circulated (100 sxs) class (C) cement from (348 ft) to surface.

Tag @ 422'

Plug (# 7) Squeezed (45sxs) class (C) cement from (594 ft) to (444 ft).  
Perf'd @ 594'.

Plug (# 7) Spot (15 sxs) class (C) cement From (830 ft) to (685 ft).

Tagged TOC @ 903'.

Plug (# 6) ReSqueezed (25sxs) class (C) cement from (900 ft) to (850 ft).

Plug (# 5) Squeezed (25sxs) class (C) cement from (900 ft) to (850 ft).  
Perf'd @ 900'.

Tagged TOC @ 1117'.

Plug (# 4) Squeezed (46sxs) class (C) cement from (1268 ft) to (1118 ft).  
Perf'd @ 1268'.

Tagged TOC @ 1500'.

Plug (# 3) Squeezed (120sxs) class (C) cement from (2069 ft) to (1571 ft).  
Perf'd @ 2069'.

Plug (# 2) Spot (17 sxs) class (C) cement From (3610 ft) to (3447 ft).

Plug (# 1) Spot (17 sxs) class (C) cement From (5822 ft) to (5658 ft). Tagged TOC @ 5665'  
Tagged CIBP @ 5822'.





 GPS Map Camera



Artesia, New Mexico, Estados Unidos

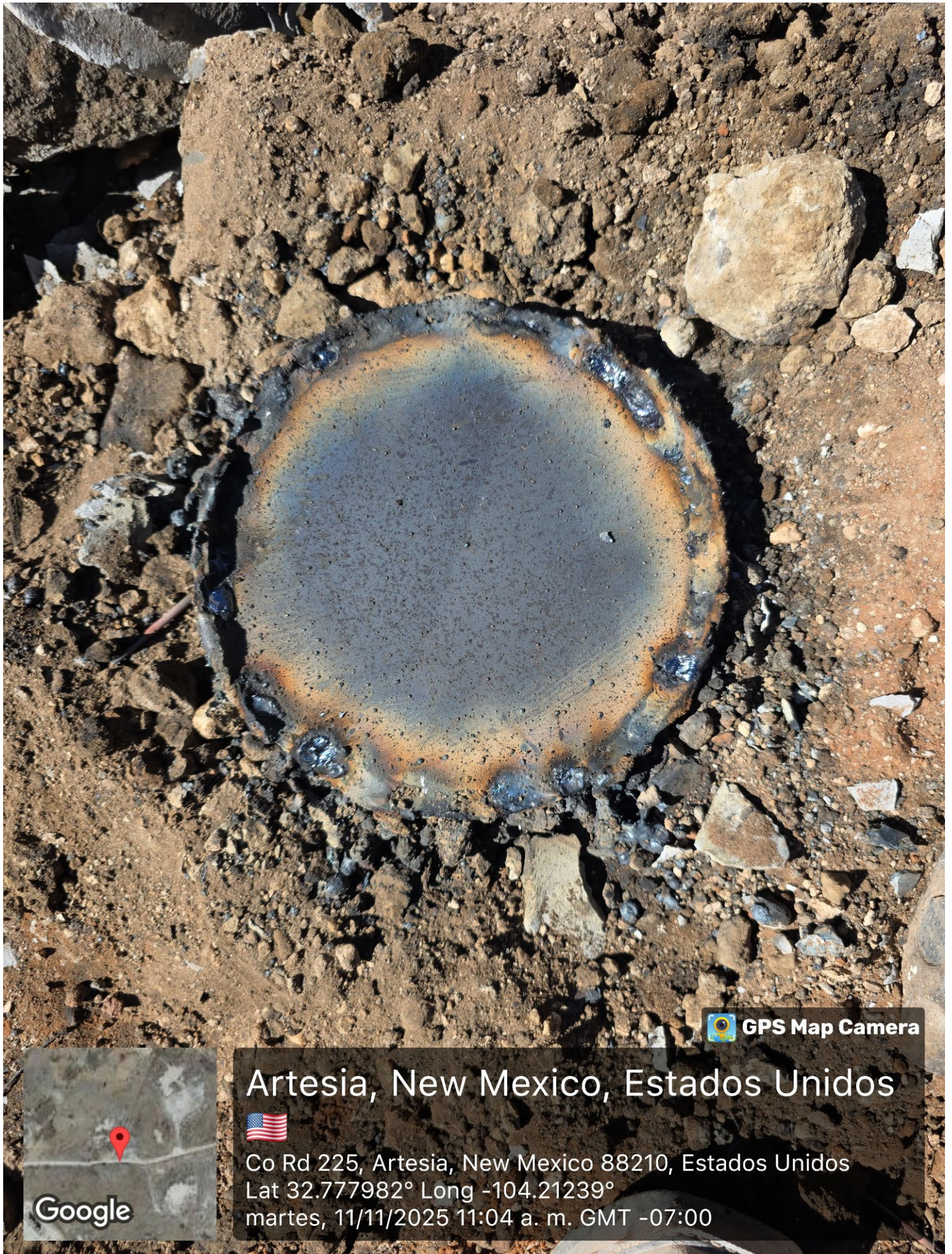


Co Rd 225, Artesia, New Mexico 88210, Estados Unidos

Lat 32.778007° Long -104.21239°

martes, 11/11/2025 10:29 a. m. GMT -07:00





 GPS Map Camera

Artesia, New Mexico, Estados Unidos



Co Rd 225, Artesia, New Mexico 88210, Estados Unidos

Lat 32.777982° Long -104.21239°

martes, 11/11/2025 11:04 a. m. GMT -07:00



Google





 GPS Map Camera

Artesia, New Mexico, Estados Unidos



Co Rd 225, Artesia, New Mexico 88210, Estados Unidos


Lat 32.777994° Long -104.212372°

martes, 11/11/2025 11:25 a. m. GMT -07:00







 GPS Map Camera



Artesia, New Mexico, Estados Unidos



Co Rd 225, Artesia, New Mexico 88210, Estados Unidos

Lat 32.777986° Long -104.212371°

martes, 11/11/2025 11:41 a. m. GMT -07:00





 **GPS Map Camera**



**Artesia, New Mexico, Estados Unidos**




Co Rd 225, Artesia, New Mexico 88210, Estados Unidos

Lat 32.777984° Long -104.212377°

martes, 11/11/2025 11:42 a. m. GMT -07:00





 **GPS Map Camera**

**Artesia, New Mexico, Estados Unidos**



Co Rd 225, Artesia, New Mexico 88210, Estados Unidos

Lat 32.777982° Long -104.212383°

martes, 11/11/2025 11:42 a. m. GMT -07:00



**Google**





 GPS Map Camera



Artesia, New Mexico, Estados Unidos




Co Rd 225, Artesia, New Mexico 88210, Estados Unidos

Lat 32.777982° Long -104.21239°

martes, 11/11/2025 11:42 a. m. GMT -07:00





 **GPS Map Camera**



## Artesia, New Mexico, Estados Unidos



Co Rd 225, Artesia, New Mexico 88210, Estados Unidos  
Lat 32.777985° Long -104.212397°  
martes, 11/11/2025 11:42 a. m. GMT -07:00



Sante Fe Main Office  
Phone: (505) 476-3441

General Information  
Phone: (505) 629-6116

Online Phone Directory  
<https://www.emnrd.nm.gov/ocd/contact-us>

State of New Mexico  
Energy, Minerals and Natural Resources  
Oil Conservation Division  
1220 S. St Francis Dr.  
Santa Fe, NM 87505

CONDITIONS

Action 525897

CONDITIONS

Operator: APACHE CORPORATION 303 Veterans Airpark Ln Midland, TX 79705	OGRID: 873
	Action Number: 525897
	Action Type: [C-103] Sub. Plugging (C-103P)

CONDITIONS

Created By	Condition	Condition Date
loren.diede	None	11/13/2025