



P.O. Box 10640 Bozeman, Montana 59719

(406) 460-0903

TO: Jim Griswold, NMOCD

FROM: Curtis Shuck, Chairman

DATE: December 14, 2025

RE: Double L Queen #010 (30-005-60138) Orphan Well Pre-Plugging Methane Monitoring

TECHNICAL MEMORANDUM

BACKGROUND:

The Well Done Foundation, Inc. (WDF) performing contract professional services methane monitoring for the State of New Mexico Energy, Minerals and Natural Resources Department – Oil Conservation Division (OCD) for Orphan Oil & Gas Wells in Chaves County, NM using the API# and coordinates provided by the OCD.

WDF dispatched a field team to the provided coordinates to locate the well and perform pre plug methane quantification. The field team traveled to the area and began a surface investigation on foot. The well was located and a Field Gas Analysis was performed. Field gas analysis produced a non-detect result

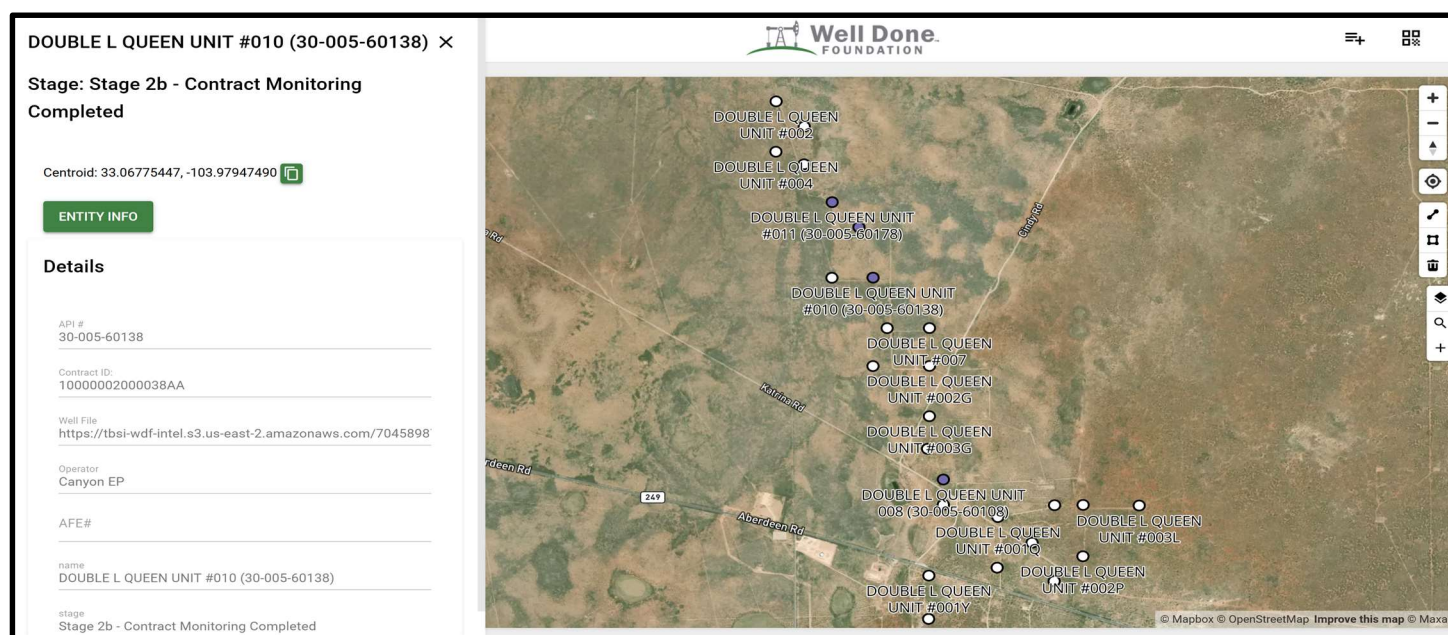


Image 1.1 – Double L Queen #010

FIELD NOTES

12/29/2022 – Travel from Hobbs, NM with Curtis & Francis to the Double L Queen #010 location North on SR18 and West on US380, South on Tower Rd. and West on Aberdeen Rd. At the approximate location, the team was able to drive to the well location, through an open gate onto private property. A Field Gas Analysis was conducted resulting in a non-detect of CH₄ on the Field Gas Analysis, so no Ventbuster Test was started. A gas sample was collected for Laboratory analysis.

CONCLUSION

- Field Gas Analysis produced a “Non-Detect”, so a gas sample was collected for Laboratory analysis prior to proceeding with methane emissions measurements.
- Laboratory Gas Analysis confirmed 0.00 ppm methane and therefore, no methane emissions measurements were performed.

Appendix A – Site Photos for Double L Queen #010 (30-005-60138)



1) Double L Queen #010 (30-005-60138) – North Facing



www.permianls.com
575.397.3713 2609 W Marland Hobbs NM 88240

C6+ Gas Analysis Report

14851G	Double L Queen #010	Double L Queen #010	
Sample Point Code	Sample Point Name	Sample Point Location	
Laboratory Services	2022057686	Tedlar Bag	Stacy - Spot
Source Laboratory	Lab File No	Container Identity	Sampler
USA	USA	USA	New Mexico
District	Area Name	Field Name	Facility Name
Aug 29, 2022 18:00	Aug 29, 2022 18:00	Sep 6, 2022 09:15	Sep 6, 2022
Date Sampled	Date Effective	Date Received	Date Reported
System Administrator			
Ambient Temp (°F)	Flow Rate (Mcf)	Analyst	Press PSI @ Temp °F Source Conditions
Well Done Foundation		NG	
Operator		Lab Source Description	

Component	Normalized Mol %	Un-Normalized Mol %	GPM
H2S (H2S)	0.0000	0	
Nitrogen (N2)	97.6410	97.641	
CO2 (CO2)	0.8520	0.852	
Methane (C1)	0.0000	0	
Ethane (C2)	0.2970	0.297	0.0790
Propane (C3)	0.5890	0.589	0.1620
I-Butane (IC4)	0.1270	0.127	0.0420
N-Butane (NC4)	0.2570	0.257	0.0810
I-Pentane (IC5)	0.0740	0.074	0.0270
N-Pentane (NC5)	0.0590	0.059	0.0210
Hexanes Plus (C6+)	0.1040	0.104	0.0450
TOTAL	100.0000	100.0000	0.4570

Method(s): Gas C6+ - GPA 2261, Extended Gas - GPA 2286, Calculations - GPA 2172

Analyzer Information			
Device Type:	Gas Chromatograph	Device Make:	Shimadzu
Device Model:	GC-2014	Last Cal Date:	Aug 14, 2022

Gross Heating Values (Real, BTU/ft³)			
14.696 PSI @ 60.00 Å°F		14.73 PSI @ 60.00 Å°F	
Dry	Saturated	Dry	Saturated
43.5	43.6	43.6	43.7

Calculated Total Sample Properties	
GPA2145-16 *Calculated at Contract Conditions	
Relative Density Real	Relative Density Ideal
0.9837	0.9837
Molecular Weight	
28.4926	

C6+ Group Properties		
Assumed Composition		
C6 - 60.000%	C7 - 30.000%	C8 - 10.000%

Field H2S
0 PPM

PROTREND STATUS:

Passed By Validator on Sep 7, 2022

DATA SOURCE:

Imported

PASSED BY VALIDATOR REASON:

Close enough to be considered reasonable.

VALIDATOR:

Luis Cano

VALIDATOR COMMENTS:

ok

Source	Date	Notes
Luis Cano	Sep 7, 2022 7:42 am	Methane = 0 PPM

Sante Fe Main Office
Phone: (505) 476-3441

General Information
Phone: (505) 629-6116

Online Phone Directory
<https://www.emnrd.nm.gov/ocd/contact-us>

State of New Mexico
Energy, Minerals and Natural Resources
Oil Conservation Division
1220 S. St Francis Dr.
Santa Fe, NM 87505

DEFINITIONS

Action 535050

DEFINITIONS

Operator: Well Done New Mexico LLC (OPG Vendor) 333 Main St Shelby, MT 59474	OGRID: 333567
	Action Number: 535050
	Action Type: [UF-OMA] Pre-Plug Methane Monitoring (UF-OMA-MMA)

DEFINITIONS

The OCD Mitigation Activity (OMA) forms are a subset of the OCD's forms exclusively designed for activities related to State of New Mexico's contracted evaluation, plugging, decommissioning, remediation, salvage and reclamation activities. Specifically, these forms are typically used where the OCD has acquired a hearing order allowing the OCD to perform mitigation activities on wells and associated facilities that no longer have an authorized or viable operator to perform the necessary work. These forms are not to be utilized for any other purpose.

Sante Fe Main Office
Phone: (505) 476-3441

General Information
Phone: (505) 629-6116

Online Phone Directory
<https://www.emnrd.nm.gov/ocd/contact-us>

State of New Mexico
Energy, Minerals and Natural Resources
Oil Conservation Division
1220 S. St Francis Dr.
Santa Fe, NM 87505

QUESTIONS

Action 535050

QUESTIONS

Operator: Well Done New Mexico LLC (OPG Vendor) 333 Main St Shelby, MT 59474	OGRID: 333567
	Action Number: 535050
	Action Type: [UF-OMA] Pre-Plug Methane Monitoring (UF-OMA-MMA)

QUESTIONS

Prerequisites	
[OGRID] Well Operator	[269864] CANYON E & P COMPANY
[API] Well Name and Number	[30-005-60138] DOUBLE L QUEEN UNIT #010
Well Status	Reclamation Fund Approved

Monitoring Event Information	
<i>Please answer all the questions in this group.</i>	
Reason For Filing	Pre-Plug Methane Monitoring
Date of monitoring	12/29/2022
Latitude	33.0677528
Longitude	-103.9794769

Monitoring Event Details	
<i>Please answer all the questions in this group.</i>	
Flow rate in cubic meters per day (m ³ /day)	0.00
Test duration in hours (hr)	2.0
Average flow temperature in degrees Celsius (°C)	15.0
Average gauge flow pressure in kilopascals (kPag)	0.0
Methane concentration in part per million (ppm)	0
Methane emission rate in grams per hour (g/hr)	0.00
Testing Method	Steady State

Monitoring Contractor	
<i>Please answer all the questions in this group.</i>	
Name of monitoring contractor	WELL DONE NEW MEXICO LLC