

<b>Well Name:</b> SIXTEEN G`S	<b>Well Location:</b> T24N / R9W / SEC 7 / LOT 2 / 36.33067 / -107.8353	<b>County or Parish/State:</b> SAN JUAN / NM
<b>Well Number:</b> 1	<b>Type of Well:</b> OIL WELL	<b>Allottee or Tribe Name:</b>
<b>Lease Number:</b> NMNM25433	<b>Unit or CA Name:</b>	<b>Unit or CA Number:</b>
<b>US Well Number:</b> 300452199500S1	<b>Operator:</b> DUGAN PRODUCTION CORPORATION	

**Subsequent Report**

**Sundry ID:** 2866608

**Type of Submission:** Subsequent Report

**Type of Action:** Plug and Abandonment

**Date Sundry Submitted:** 08/04/2025

**Time Sundry Submitted:** 06:53

**Date Operation Actually Began:** 06/09/2025

**Actual Procedure:** Dugan Production plugged & abandoned the well on 06/09/2025 - 06/18/2025 per the attached procedure.

**SR Attachments**

**Actual Procedure**

Sixteen\_Gs\_1\_BLM\_OCD\_apvd\_plug\_changes\_20250804065131.pdf

Sixteen\_Gs\_1\_SR\_PA\_formation\_tops\_20250804065041.pdf

Sixteen\_Gs\_1\_SR\_PA\_completed\_wellbore\_schematic\_20250804065031.pdf

Sixteen\_Gs\_1\_SR\_PA\_work\_completed\_20250804065020.pdf

Well Name: SIXTEEN G S

Well Location: T24N / R9W / SEC 7 /  
LOT 2 / 36.33067 / -107.8353

County or Parish/State: SAN  
JUAN / NM

Well Number: 1

Type of Well: OIL WELL

Allottee or Tribe Name:

Lease Number: NMNM25433

Unit or CA Name:

Unit or CA Number:

US Well Number: 300452199500S1

Operator: DUGAN PRODUCTION  
CORPORATION

### Operator

I certify that the foregoing is true and correct. Title 18 U.S.C. Section 1001 and Title 43 U.S.C. Section 1212, make it a crime for any person knowingly and willfully to make to any department or agency of the United States any false, fictitious or fraudulent statements or representations as to any matter within its jurisdiction. Electronic submission of Sundry Notices through this system satisfies regulations requiring a

Operator Electronic Signature: TYRA FEIL

Signed on: AUG 04, 2025 06:48 AM

Name: DUGAN PRODUCTION CORPORATION

Title: Authorized Representative

Street Address: PO BOX 420

City: FARMINGTON

State: NM

Phone: (505) 325-1821

Email address: TYRAFEIL@DUGANPRODUCTION.COM

### Field

Representative Name: Aliph Reena

Street Address: PO Box 420

City: Farmington

State: NM

Zip: 87499-0420

Phone: (505)360-9192

Email address: Aliph.Reena@duganproduction.com

### BLM Point of Contact

BLM POC Name: MATTHEW H KADE

BLM POC Title: Petroleum Engineer

BLM POC Phone: 4067917716

BLM POC Email Address: MKADE@BLM.GOV

Disposition: Accepted

Disposition Date: 08/11/2025

Signature: Matthew Kade

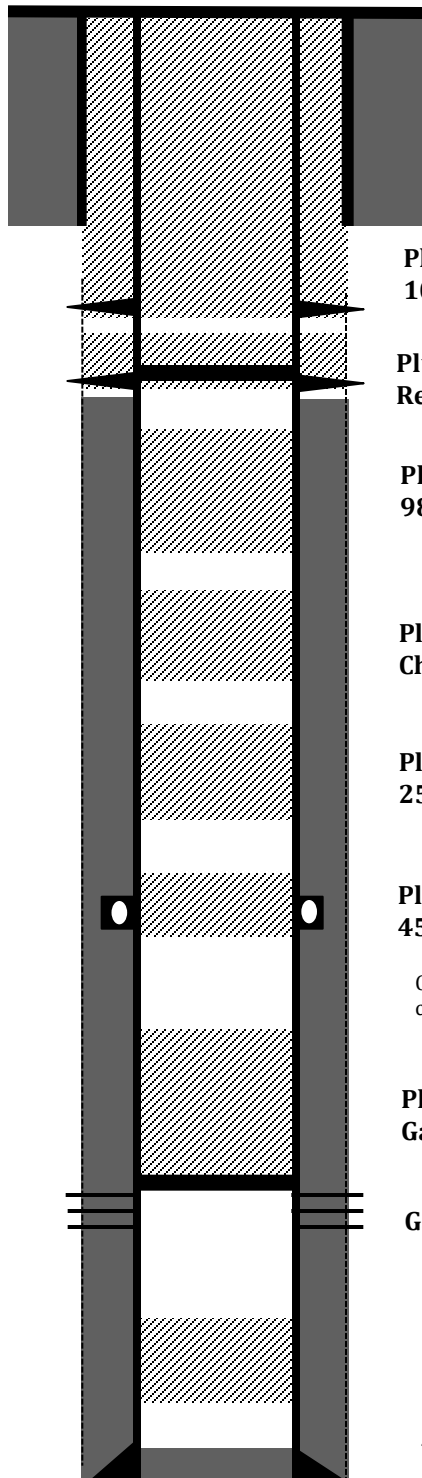
Dugan Production P&A'd the well on **06/09/2025-06/18/2025** per the following procedure:

- MI & RU Aztec Rig 481 and cement equipment. Spot & RU equipment.
- Check pressures, Tubing 45 psi, Casing 45 psi, BH 0 psi.
- ND WH & NU BOP. LD rods & 2-3/8" rod string and production tubing.
- Check pressures, Tubing 5 psi, Casing 0 psi, BH 0 psi.
- PU 4½" string mill and bit and ran to 6310'. Encountered hard fill. Cannot make any hole after several hours of working. Requested permission to start P&A ops from 6310'. NMOCD/BLM ok w/pumping plug at 6310'.
- Check pressures, Tubing 0 psi, Casing 0 psi, BH 0 psi.
- **Plug I, Graneros-Dakota:** Spot Plug I, Inside 4½" casing from TIH tubing open ended 6310' w/22 sks 25.3 cu ft Class G neat cement to cover Graneros/Dakota. Displaced w/18 bbls water. Displaced short of 5 bbls due to no circulation because of Gallup perforations above. WOC overnight. Tagged TOC at 6027'. Good tag. **Plug I, Inside 4½" casing, 22 sks, 25.3 Cu ft, Graneros-Dakota, 6027'-6310'.**
- RIH w/4½" CIBP and set @ 5372'. Loaded and circulated hole w/85 bbls water.
- MIRU WL and performed CBL from 5372" to surface. Sent copy of CBL & revised procedure to BLM & NMOCD. Copy of communications attached.
- Check pressures, Tubing 0 psi, Casing 0 psi, BH 0 psi.
- **Plug II, Gallup:** Spot Plug II inside 4½" casing from 5372' on top of the CIBP w/40 sks (46 cu ft) Class G cement to cover the Gallup top & Gallup perforations. Displaced w/18.8 bbls water. WOC 4 hrs. Tagged TOC at 5040' BAD TAG. Top off plug from 5040'. Re-spot 15 sks, 17.25 cu ft Class G neat cement to cover the Gallup top. Displaced w/18.7 bbls water. WOC overnight. Tagged TOC at 4868'. Good tag. **Plug II, Inside 4½" casing, CIBP at 5372', 55 total sks, 63.3 cu ft, Gallup top-Gallup perforations, 4868'-5372'.**
- Attempt to pressure tested casing to 600 psi for 30 minutes. Casing won't test. Test failed.
- **Plug III, Mancos-DV Tool:** Spot Plug III inside 4½" casing from 4556' w/26 sks, 29.9 cu ft Class G neat cement to cover the Mancos top & DV tool. Displaced w/16.3 bbls water. WOC 4 hrs. Tagged TOC at 4185'. Good tag. **Plug III, Inside 4½" casing, 26 sks, 29.9 cu ft, Mancos-DV tool, 4185'-4556'.**
- **Plug IV, Mesaverde-La Ventana:** Spot Plug IV inside 4½" casing from 3302' w/53 sks, 61 cu ft Class G cement to cover the Mesaverde top. Displaced w/10.1 bbls water. WOC overnight. Tagged TOC at 2587'. Good tag. **Plug IV, Inside 4½" casing, 53 sks, 61 cu ft, La Ventana-Mesaverde, 2587'-3302'.**
- **Plug V, Lower Chacra-Upper Chacra:** Spot Plug V inside 4½" casing from 2587' w/44 sks, 50.6 cu ft Class G cement to cover the Lower Chacra & Upper Chacra tops. Displaced w/7.8 bbls water. WOC 4 hrs. Tagged TOC at 2008'. Good tag. **Plug V, Inside 4½" casing, 44 sks, 50.6 cu ft, Lower Chacra-Upper Chacra, 2008'-2587'.**
- **Plug VI, Fruitland-Pictured Cliffs:** Spot Plug VI inside 4½" casing from 1800' w/62 sks, 71.3 cu ft Class G cement to cover the Fruitland-Pictured Cliffs tops. Displaced w/3.9 bbls water. WOC overnight. Tagged TOC at 982'. Good tag. **Plug VI, Inside 4½" casing, 62 sks, 71.3 cu ft, Fruitland-Pictured Cliffs, 982'-1800'.**

- **Check pressures, Tubing 0 psi, Casing 0 psi, BH 0 psi.**
- **Plug VII, Kirtland:** RU WL services. Shoot perforations @ 815'. RD WL and verified all shots fired. Set CICR at 762'. Sting in, establish injection rate below CICR at 1.3BPM, 500 psi. Swap to cement. Squeeze & spot Plug VII, inside/outside 4½" casing w/30 sks, 34.5 cu ft cement. 18 sks-20.7 cu ft outside & 12 sks-13.8 cu ft inside casing. Displace w/2.6 bbls water. WOC 4 hrs. Tagged TOC at 663'. Good Tag. **Plug VII, Inside/Outside 4½" casing, perforations at 815', cement retainer at 762', 30 sks, 34.5 cu ft, Kirtland top, 663'-815'.**
- **Plug VIII, Ojo Alamo-Surface:** RU WL services. Shoot perforations @ 540'. RD WL and verified all shots fired. TIH w/tubing open ended to 540'. Establish circulation to BH at 1.6 BPM, 500 psi. Swap to cement. Spot & squeeze Plug VI, inside/outside 4½" casing w/100 sks, 115 cu ft cement. Circulated good cement to surface through BH. WOC overnight. Cut wellhead off. Tagged TOC at 1.5' inside casing and 0' inside annulus. Good tag. **Plug VIII, Inside/Outside 4½" casing, Perforations at 540', EOT at 540', 100 sks, 115 cu ft, Ojo Alamo-Surface, 0-590'.**
- Fill up cellar & install dry hole marker w/20 sks, 23 cu ft Class G neat cement.
- Clean location. RD Aztec Well Services Rig 481. PU tools and trash. Empty pits. Move out.
- Witnessed by NMOCD rep on location Joe Maestas.
- **Well P&A'd 06/18/2025.**

**Completed P & A Schematic**

Sixteen G's # 001  
API: 30-045-21995  
Sec 7 T24N R09W  
1850' FNL & 990' FWL  
San Juan County, NM  
Lat: 36.330680, Long: -107.835769



8-5/8" 24# casing @ 198'. Cemented with 135 sks, 159 Cu.ft.  
Circulated cement to surface

**Plug VIII, Inside/Outside 4 1/2" casing, Perforations at 540', EOT at 540', 100 sks, 115 cu ft, Ojo Alamo-Surface, 0-590'**

**Plug VII, Inside/Outside 4 1/2" casing, Perforations at 815', Cement Retainer at 762', 30sks, 34.5 cu ft, Kirtland top, 663'-815'**

**Plug VI, Inside 4 1/2" casing, 62 sks, 71.3 Cu.ft, Fruitland-Pictured Cliffs, 982'-1800'**

**Plug V, Inside 4 1/2" casing, 44 sks, 50.6 Cu.ft, Lower Chacra-Upper Chacra, 2008'-2587'**

**Plug IV, Inside 4 1/2" casing, 53 sks, 61 Cu.ft, La Ventana-Mesaverde, 2587'-3302'**

**Plug III, Inside 4 1/2" casing, 26 sks, 29.9 Cu.ft, Mancos-DV tool, 4185'-4556'**

Cemented Stage I w/ 350 sks Class B, 542 Cu.ft. DV tool @ 5406'. Stage II w/ 700 sks total cement 1350 Cu.ft. Total 1892 Cu.ft cement.

**Plug II, Inside 4 1/2" casing, CIBP at 5372', 55 total sks, 63.3 Cu.ft, Gallup top-Gallup perforations, 4868'-5372'**

**Gallup Perforated @ 5422'-5528'**

**Plug I, Inside 4 1/2" casing, 22 sks, 25.3 Cu ft, Graneros-Dakota, 6027'-6310'**

**4 1/2" 10.5 # casing @ 6480', Hole size 6-1/4"**

**Sixteen G's # 001**  
API: 30-045-21995  
Sec 7 T24N R09W  
1850' FNL & 990' FWL  
San Juan County, NM  
Lat: 36.330680, Long: -107.835769

**Elevation ASL : 6859' GL, 6870' KB**

**Formation Tops (Referenced for P & A)**

- **Surface Casing - 198'**
- **Ojo Alamo - 490'**
- **Kirtland - 765'**
- **Fruitland - 1120'**
- **Pictured Cliffs - 1750'**
- **Lewis - 1860'**
- **Upper Chacra - 2160'**
- **Lower Chacra - 2540'**
- **Mesaverde - 3252'**
- **Mancos - 4419'**
- **DV tool - 4506'**
- **Gallup - 5056'**
- **Gallup Perfs - 5422'-5528'**
- **Greenhorn - 6070'**
- **Graneros - 6243'**
- **Dakota - 6350'**
- **PBTD - 6435'**

## Tyra Feil

---

**From:** Kuehling, Monica, EMNRD <monica.kuehling@emnrd.nm.gov>  
**Sent:** Thursday, June 12, 2025 11:22 AM  
**To:** Rennick, Kenneth G; Aliph Reena; Kade, Matthew H; Lucero, Virgil S; Clayton, Gail  
**Cc:** Alex Robles; Dean Mestas; Tyra Feil; Maestas, Joseph I; Brian McCann; Jayden Lamb  
**Subject:** RE: [EXTERNAL] Re: 16G's #001 CBL

NMOCD approves below

Thank you

Monica Kuehling  
Compliance Officer Supervisor  
Deputy Oil and Gas Inspector  
New Mexico Oil Conservation Division  
North District  
Cell Phone: 505-320-0243  
Email - monica.kuehling@emnrd.nm.gov

---

**From:** Rennick, Kenneth G <krennick@blm.gov>  
**Sent:** Thursday, June 12, 2025 11:03 AM  
**To:** Aliph Reena <Aliph.Reena@duganproduction.com>; Kade, Matthew H <mkade@blm.gov>; Lucero, Virgil S <vlucero@blm.gov>; Clayton, Gail <gclayton@blm.gov>; Kuehling, Monica, EMNRD <monica.kuehling@emnrd.nm.gov>  
**Cc:** Alex Robles <arobles@aztecwell.com>; Dean Mestas <dmestas@aztecwell.com>; Tyra Feil <Tyra.Feil@duganproduction.com>; Maestas, Joseph I <jimaestas@blm.gov>; Brian McCann <5054198699@aztecwell.com>; Jayden Lamb <Jayden.Lamb@duganproduction.com>  
**Subject:** Re: [EXTERNAL] Re: 16G's #001 CBL

The BLM finds the procedure appropriate.

Kenneth (Kenny) Rennick

Petroleum Engineer

Bureau of Land Management  
Farmington Field Office  
6251 College Blvd  
Farmington, NM 87402

Email: [krennick@blm.gov](mailto:krennick@blm.gov)  
Mobile & Text: 505.497.0019

---

**From:** Aliph Reena <[Aliph.Reena@duganproduction.com](mailto:Aliph.Reena@duganproduction.com)>  
**Sent:** Thursday, June 12, 2025 10:40 AM  
**To:** Kade, Matthew H <[mkade@blm.gov](mailto:mkade@blm.gov)>; Lucero, Virgil S <[vlucero@blm.gov](mailto:vlucero@blm.gov)>; Clayton, Gail <[gclayton@blm.gov](mailto:gclayton@blm.gov)>; [monica.kuehling@emnr.dnm.gov](mailto:monica.kuehling@emnr.dnm.gov) <[monica.kuehling@emnr.dnm.gov](mailto:monica.kuehling@emnr.dnm.gov)>; Rennick, Kenneth G <[krennick@blm.gov](mailto:krennick@blm.gov)>; Porch, Dustin T <[dporch@blm.gov](mailto:dporch@blm.gov)>  
**Cc:** Alex Robles <[arobles@aztecwell.com](mailto:arobles@aztecwell.com)>; Dean Mestas <[dmestas@aztecwell.com](mailto:dmestas@aztecwell.com)>; Tyra Feil <[Tyra.Feil@duganproduction.com](mailto:Tyra.Feil@duganproduction.com)>; Maestas, Joseph I <[jimaestas@blm.gov](mailto:jimaestas@blm.gov)>; Brian McCann <[5054198699@aztecwell.com](mailto:5054198699@aztecwell.com)>; Jayden Lamb <[Jayden.Lamb@duganproduction.com](mailto:Jayden.Lamb@duganproduction.com)>  
**Subject:** [EXTERNAL] Re: 16G's #001 CBL

**This email has been received from outside of DOI - Use caution before clicking on links, opening attachments, or responding.**

**RE: Revised procedure after CBL**  
**API: 30-045-21995**  
**Sixteen G's # 1**  
**Dugan Production Corp**

After running the CBL, the TOC behind casing is approximately at 1010'. We request the following changes.

- **Kirtland Plug, 665'-815':** Will do Inside/outside. Perforate at 815' and attempt to get a rate through the squeeze holes. If a rate cannot be established, will attempt to perforate higher and re-attempt. Do inside/outside plug w/ 200' outside and 150' inside to account for required excess. Tag and verify top.
- **Ojo Alamo Plug, 390'-540':** Will do Inside/Outside. Perforate at 540' and attempt to get a rate though the squeeze holes. Do inside/outside plug w/ 200' outside and 150' inside to account for required excess. Tag and verify top.
- **Surface Plug, Surface, 0 - 248':** Will do Inside/Outside. Perforate at 248' and attempt to get a rate through the squeeze holes. Do inside/outside plug to circulate cement to surface. Alternatively, if a rate can be established from Ojo Alamo perforations through the BH, circulate from Ojo Alamo to surface. WOC 4 hrs before cutting wellhead off.



- All other plugs will be inside plugs. Fruitland top is at 1120', Plug will be 1020'-1170', and there is good cement till 1010'.

If the requested changes are acceptable to BLM & NMOCD, please let us know and we will proceed accordingly.

Aliph  
505-360-9192

**Aliph Reena P.E**  
Engineering Supervisor  
Dugan Production Corp.  
505-360-9192

---

**From:** Brian McCann <[5054198699@aztecwell.com](mailto:5054198699@aztecwell.com)>  
**Sent:** Thursday, June 12, 2025 9:20 AM  
**To:** Aliph Reena <[Aliph.Reena@duganproduction.com](mailto:Aliph.Reena@duganproduction.com)>  
**Cc:** Alex Robles <[arobles@aztecwell.com](mailto:arobles@aztecwell.com)>; [mkade@blm.gov](mailto:mkade@blm.gov) <[mkade@blm.gov](mailto:mkade@blm.gov)>; [vlucero@blm.gov](mailto:vlucero@blm.gov) <[vlucero@blm.gov](mailto:vlucero@blm.gov)>; [gclayton@blm.gov](mailto:gclayton@blm.gov) <[gclayton@blm.gov](mailto:gclayton@blm.gov)>; [monica.kuehling@emnrd.nm.gov](mailto:monica.kuehling@emnrd.nm.gov) <[monica.kuehling@emnrd.nm.gov](mailto:monica.kuehling@emnrd.nm.gov)>; [krennick@blm.gov](mailto:krennick@blm.gov) <[krennick@blm.gov](mailto:krennick@blm.gov)>; Dean Mestas <[dmestas@aztecwell.com](mailto:dmestas@aztecwell.com)>; Tyra Feil <[Tyra.Feil@duganproduction.com](mailto:Tyra.Feil@duganproduction.com)>; [jimaestas@blm.gov](mailto:jimaestas@blm.gov) <[jimaestas@blm.gov](mailto:jimaestas@blm.gov)>  
**Subject:** 16G's #001 CBL

CBL for 16G's #001 is attached.

CAUTION: This email originated from outside your organization. Exercise caution.

CAUTION: This email originated from outside your organization. Exercise caution.









Sante Fe Main Office  
Phone: (505) 476-3441

General Information  
Phone: (505) 629-6116

Online Phone Directory  
<https://www.emnrd.nm.gov/ocd/contact-us>

**State of New Mexico**  
**Energy, Minerals and Natural Resources**  
**Oil Conservation Division**  
**1220 S. St Francis Dr.**  
**Santa Fe, NM 87505**

CONDITIONS

Action 539655

**CONDITIONS**

Operator: DUGAN PRODUCTION CORP PO Box 420 Farmington, NM 87499	OGRID: 6515
	Action Number: 539655
	Action Type: [C-103] Sub. Plugging (C-103P)

**CONDITIONS**

Created By	Condition	Condition Date
loren.diede	None	1/7/2026