

| Well Name | Well Number | US Well Number | Lease Number | Case Number | Operator |
|---------------|-------------|----------------|--------------|-------------|----------|
| SAN JUAN 32-8 | 34 | 300453315000C1 | NMNM03402 | NMNM78424D | HILCORP |
| SAN JUAN 32-8 | 34 | 300453315000C2 | NMNM03402 | NMNM78424A | HILCORP |

Subsequent Report

Sundry ID: 2506471

Type of Submission: Subsequent Report

Type of Action: Workover Operations

Date Sundry Submitted: 07/07/2021

Time Sundry Submitted: 12:25

Date Operation Actually Began: 06/09/2021

Actual Procedure: Hilcorp Energy performed a casing repair on the subject well. See attached summary report, MIT, and wellbore schematic.

SR Attachments

Actual Procedure

SJ_32_8_UNIT_34_CSG_REPAIR_SUBSEQ_SUBMIT_20210707122448.pdf

Operator Certification

I certify that the foregoing is true and correct. Title 18 U.S.C. Section 1001 and Title 43 U.S.C. Section 1212, make it a crime for any person knowingly and willfully to make to any department or agency of the United States any false, fictitious or fraudulent statements or representations as to any matter within its jurisdiction. Electronic submission of Sundry Notices through this system satisfies regulations requiring a submission of Form 3160-5 or a Sundry Notice.

Operator Electronic Signature: PRISCILLA SHORTY

Signed on: JUL 07, 2021 12:25 PM

Name: HILCORP ENERGY COMPANY

Title: Regulatory Technician

Street Address: 382 Road 3100

City: Aztec

State: NM

Phone: (505) 324-5188

Email address: pshorty@hilcorp.com

Field Representative

Representative Name:

Street Address:

City:

State:

Zip:

BLM Point of Contact

BLM POC Name: KENNETH G RENNICK

BLM POC Phone: 9708783846

Disposition: Accepted

Signature: Kenneth Rennick

BLM POC Title: Petroleum Engineer

BLM POC Email Address: krennick@blm.gov

Disposition Date: 09/08/2021

CONFIDENTIAL

SAN JUAN 32-8 UNIT 34

30-045-33150

Casing Repair

6/9/2021 – MIRU. **CHECK WELL PRESSURES. SITP - 50 PSI. SIICP - 50 PSI. SICP - 50 PSI. SIBHP - 0 PSI.** BD TBG PRESSURE. ND WH. NU BOP ASSEMBLY. FUNCTION TEST BOP. TESTED GOOD. RU FLOOR & HANDLING TOOLS FOR TBG. UNSET TBG HANGER. PULL TBG HANGER. TOO H W/ 17 JTS OF TBG AND 1 PARTIAL JT. WO FISHING TOOLS. MU FISHING ASSEMBLY. TALLY AND TIH W/ 2 3/8" WELL TBG & RIG STOCK TBG. TAGGED FISH AT 697'. LATCH ONTO FISH. TBG CAME APART. TOO H W/ TBG. LEFT 2 TBG JTS AND THE FISHING OVERSHOT ON FISH TOP. TBG PARTED JUST BELOW UPSET. TIH & TOO H LD 2 3/8" WELL TBG. CALL FOR FISHING STRING TO BE LOADED. SWI AND SD FOR THE EVENING.

6/10/2021 - **CHECK WELL PRESSURES. SICP-110 PSI. SIICP-110 PSI. SIBHP- 0 PSI.** WO 2 3/8" 4.7# CS HYDRIL TBG STRING. MOVE IN FISHING STRING, RESPOT TBG FLOATS. MU 2ND FISHING ASSEMBLY. TALLY & TIH W/ FISHING STRING. TAG FISH TOP AT 637'. LATCH ONTO FISH. TBG CAME APART. TOO H W/ WORK STRING. LEFT +/- 4' OF TBG BODY & 1ST FISHING OVERSHOT ON FISH TOP. CALL HEC ENGINEERING. WILL MAKE ANOTHER RECOVERY ATTEMPT. MU FISHING ASSEMBLY FOR THIRD RECOVERY ATTEMPT. TIH W/ FISHING STRING. TAG FISH TOP AT 697'. LATCH ONTO FISH. TBG CAME APART. TOO H W/ FISHING STRING. RECOVERED 1ST OVERSHOT AND 3" OF TBG. BREAK IS CLEAN. CALL HEC ENGINEERING FOR FURTHER ORDERS. MIRU WIRELINE UNIT & EQUIP. TAG UP AT 1,545'. UNABLE TO GET DEEPER. TOOLS WERE DRAGGING IN SEVERAL OTHER AREAS. CALL HEC ENGINEERING. WILL ATTEMPT TO CUT TBG NEAR THIS DEPTH. MU 1.375" O.D. CHEMICAL CUTTER ASSEMBLY. RUN IN & GET ON DEPTH. CHEMICAL CUT TBG AT 1,480' WLM. PULL OUT W/ WIRELINE TOOLS. RD EQUIP OFF WELL. TOO H W/ WORK STRING. RECOVERED 24 WELL TBG JTS AND 1 PARTIAL PIECE. LAST 12 JTS OF WELL TBG STRING WERE CORKSCREWED. CHEMICAL CUT ON TBG IS CLEAN. SWI AND SD FOR THE EVENING.

6/11/2021 - **CHECK WELL PRESSURES. SICP-90 PSI. SIICP-90 PSI. SIBHP- 0 PSI.** MU FISHING ASSEMBLY. TIH W/ FISHING STRING. TAG FISH TOP AT 1,490'. LATCH ONTO FISH. CAME OFF OF FISH. TOO H W/ WORK STRING. REDRESS W/ NEW GRAPPLE. TIH AND LATCH ONTO FISH. FISH NOT MOVING. CALL HEC ENGINEERING FOR ORDERS. PULLED TO 60,000 LBS. FISH NOT MOVING. CALL HEC. CALL WIRELINE CREW. MU 1.4375" O.D. X 3.65' JET CUTTER ASSEMBLY. RUN INTO TBG. UNABLE TO GET TOOLS PAST 2,729'. COULD NOT GET ANY DEEPER AFTER NUMEROUS ATTEMPTS. TOO H W/ WIRELINE TOOLS. RD WIRELINE UNIT & TOOLS. SHUT IN, SWI AND SD FOR THE EVENING.

6/14/2021 - **CHECK WELL PRESSURES. SITP-110 PSI. SICP-110 PSI. SIICP-110 PSI. SIBHP- 0 PSI.** MIRU WIRELINE TOOLS FOR JET CUTTER RUN. MU JET CUTTER. TAG UP AT 7,939' WLM. CUT TBG AT 7,900' WLM. TOO H W/ WIRELINE CUTTING TOOLS. PU ON TBG FISH, TBG CAME FREE. RD WIRELINE UNIT & TOOLS. TOO H W/ WORK STRING STANDING BACK INTO DERRICK. BEGIN TO LD WELL TBG FISH. CAME OUT W/ 208 TBG JTS. ALL THE TBG IS CORK SCREWED AND NOT REUSEABLE. MU SKIRTED MILL ASSEMBLY. TALLY & TOO H W/ 2 3/8" HYDRIL WORK STRING TO 1,720'. SWI AND SD FOR THE EVENING.

6/15/2021 - **CHECK WELL PRESSURES. SITP-100 PSI. SICP-100 PSI. SIICP-100 PSI. SIBHP- 0 PSI.** CONTINUE TO TALLY & TIH W/ WORK STRING TO 4,120'. RU AIR UNIT LINES TO TBG SWIVEL. TEST AIR LINES TO 1,500 PSI. TEST GOOD. UNLOAD FLUID. SD AIR UNIT, RD OFF TBG. CONTINUE TO TALLY & TIH W/ WORK STRING. TAGGED FISH TOP AT 7,896'. RU POWER SWIVEL ASSEMBLY. START AIR AT 1,350 CFM. ESTABLISH FOAM FLUID CIRCULATION. START MILLING/DRESSING FISH TOP. MILL DOWN TO 7,899'. SD AIR/MIST, RD POWER SWIVEL ASSEMBLY. TOO H W/ FISHING STRING/MILLING TOOLS TO 3,950'. SWI AND SD FOR THE EVENING.

6/16/2021 - **CHECK WELL PRESSURES. SITP-100 PSI. SICP-110 PSI. SIICP-110 PSI. SIBHP- 0 PSI.** CONTINUE TOO H W/ FISHING STRING/MILLING TOOLS. MU FISHING ASSEMBLY. TOO H W/ FISHING

SAN JUAN 32-8 UNIT 34

30-045-33150

Casing Repair

STRING. TAG FISH TOP AT 7,899'. TIE BACK DRAW WORKS. LATCH ONTO FISH. TBG CAME FREE. LD 2 PUP JTS & 1 JOINT OF WORK STRING. TBG FISH APPEARS TO BE FREE. TOO H W/ WORK STRING TB. MU SELECT TOOLS 4 1/2" RBP. TIH W/ RBP. SET RBP AT 5,130'. HAD A GOOD SET. CIRC DOWN 2 3/8" TBG. HAD CIRC FROM 7" INTERMEDIATE CSG. SHUT IN INTERMEDIATE VALVE AND COTINUED CIRC UNTIL FLUID WAS CLEAN. RD OFF TBG. SWI AND SD FOR THE EVENING.

6/17/2021 - **CHECK WELL PRESSURES. SITP-0 PSI. SICP-0 PSI. SIICP-0 PSI. SIBHP- 0 PSI.** RU LINE FROM 7" INTERMEDIATE TO FLOWBACK TANK. CIRCULATE 7" INTERMEDIATE W/ 15 BBLs OF 2% KCL WATER. CLOSE CSG VALVES. PU W/ RIG PUMP TO 640 PSI & MONITOR. **CALL NMOCD & WELLCHECK SERVICES FOR WITNESSED MIT TESTING.** WAIT ON NMOCD & WELLCHECK TO ARRIVE. MIRU WELLCHECK FOR MIT TEST ON PROD CSG. CONDUCTED MIT ON 4 1/2" CSG STRING TO 560 PSI. TEST WAS GOOD. RDMO WELLCHECK. TOO H W/ 2 3/8" TBG TO 3,400'. WILL UNLOAD WELL HERE. **RECEIVED CALL FROM NMOCD (MONICA KUEHLING). CALLED TEST A FAILURE DUE TO COMMUNICATION BETWEEN PRODUCTION & INTERMEDIATE CSG STRINGS.** CALL HEC ENGINEERING. WAIT ON ORDERS. **HEC ENGINEER CALLED MONICA KUEHLING REGARDING PROD "TIE-BACK" CSG, IT WAS FOLLOWED UP AN EMAIL. BRANDON POWELL DID NOT APPROVE LEAVING A DEFECTIVE CSG IN THE WELL.** SWI AND SD FOR THE EVENING.

6/18/2021 – **HEC ENGINEER SENT AN EMAIL TO BLM AND NMOCD OUTLINING PLAN FORWARD TO CUT THE 4-1/2" TIE BACK STRING.**

6/22/2021 – **BLM GAVE VERBAL APPROVAL ON THE PROCEDURE TO CUT THE 4-1/2" TIE BACK STRING AS OUTLINED BY HEC ENGINEER. NMOCD AGREED.**

6/23/2021 - **CHECK WELL PRESSURES. SITP-0 PSI. SICP-0 PSI. SIICP-0 PSI. SIBHP- 0 PSI.** TOO H W/ WORK STRING TBG & SETTING TOOL. DUMPED 150 LBS OF 20/40 FRAC SAND BEFORE PUMPING WATER. **HEC ENGINEER SENT BLM AND NMOCD AN EMAIL ASKING APPROVAL TO CHANGE CUT DEPTH FROM 2645' TO 2600'. BOTH APPROVED THE CHANGE.** MIRU WIRELINE FOR PLANNED CHEMICAL CUTTING OPERATION. RUN IN W/ 3.75" OD GAUGE RING. TAG UP AT 568' WLM. TOO H, ADD SINKER BAR AND RERUN. STACKING OUT AT 568' WLM. MU 3.25" OD CCL. RUN STRIP LOG ACROSS BAD AREA. CCL INDICATES A POSSIBLE CSG PART AT 565' TO 567' WLM IN 4 1/2" PROD CSG. CALL HEC ENGINEERING. WILL ATTEMPT TO SPEAR 4 1/2" CSG AND PULL OUT OF WELL. RD WIRELINE TOOLS OFF OF RIG. ND BOP ASSEMBLY. ND PROD TBG HEAD. PU ON TBG HEAD ASSEMBLY AND 4 1/2" CSG STRING CAME UP W/ TBG HEAD. RUN IN W/ 4 1/2" CSG SPEAR AND SET. REMOVED TBG HEAD FROM CSG STUB. UNABLE TO REMOVE 4 1/2" CSG SLIPS DONUT FROM PROD WH. WILL NOT BE ABLE TO PULL 4 1/2" CSG. STRIP TBG HEAD OVER CSG SPEAR/STUB & NU. STRIP BOP ASSEMBLY OVER CSG STUB/SPEAR & NU. RU FLOOR AND CSG HANDLING TOOLS. TOO H W/ 13 FULL JTS OF 4 1/2" CSG AND 1 PARTIAL PIECE. PIN HAD BROKEN OFF LEAVING CSG COLLAR STUB LOOKING UP. SWI AND SD FOR THE EVENING.

6/24/2021 - **CHECK WELL PRESSURES. SICP-0 PSI. SIBHP- 0 PSI.** MIRU WIRELINE FOR PLANNED CHEMICAL CUTTING OPERATION. RUN IN W/ 3.75" O.D. GAUGE RING. SLIGHT TAG AT 568' WLM. ABLE TO WORK THRU. RAN TO 2,700' WLM. TOO H, MU CHEMICAL CUTTER ASSEMBLY. CUT 4 1/2" CSG AT 2,600' WLM. MU OVERSHOT ASSEMBLY FOR 4 1/2" CSG. TIH W/ 4 1/2" OVERSHOT AND WORKSTRING TBG. LATCHED ONTO 4 1/2" CSG. PIPE NOT COMING FREE. CALL HEC ENGINEERING. DECIDED TO RUN FREEPOINT TOOL. MU 1.4375" O.D. X 13' FREEPOINT TOOL ASSEMBLY & RUN INTO WELL. START FREE POINT OPERATION. CALIBRATE TOOLS AT 1,800' WLM. 2,009' WLM -100% FREE. 2,299' WLM -100% FREE. 2,463' WLM -100% FREE. 2,482' WLM -85% FREE. 2,499' WLM -45% FREE. 2,550' WLM -25% FREE. 2,583' WLM -0% FREE. PULL OUT OF WELL W/ TOOLS. CALL HEC ENGINEERING W/ RESULTS. WAIT ON

SAN JUAN 32-8 UNIT 34

30-045-33150

Casing Repair

ORDERS. RD WIRELINE TOOLS. RELEASE OVERSHOT OFF OF 4 1/2" CSG. COULD NOT RELEASE. RU POWER SWIVEL TO RELEASE OFF OF CSG. TOO H W/ FISHING STRING & OVERSHOT. **HEC ENGINEER EMAILED BLM AND NMOCD TO GIVE UPDATE ON JOB OPERATION AND REQUESTED APPROVAL TO CUT AT 2450' AND RECOVER THE CSG ABOVE THAT DEPTH.** SWI AND SD FOR THE EVENING.

6/25/2021 - **CHECK WELL PRESSURES. SICP-0 PSI. SIBHP- 0 PSI.** WO APPROVAL FROM BLM/OCD AGENCIES. RU WIRELINE FOR PLANNED CUTTING OPERATION. TIH W/ 3.75" O.D. GAUGE RING TO 2,500' WLM. TOO H, MU CHEMICAL CUTTER ASSEMBLY. CUT 4 1/2" CSG AT 2,450' WLM. CORRELATED TO STRIP LOG CSG COLLARS PICKED FROM GR/CC/CBL LOG DATED 9-28-06. CUT APPEARS TO BE SUCCESSFUL. MU OVERSHOT ASSEMBLY FOR 4 1/2" CSG. TIH W/ 4 1/2" OVERSHOT AND WORKSTRING TBG. LATCHED ONTO 4 1/2" CSG. PIPE IS COMING FREE. LD 2 3/8" PUP JTS. CONTINUE OUT W/ FISHING/WORK STRING. RD, RELEASED WIRELINE UNIT & TOOLS. PULL OVERSHOT OFF OF 4 1/2" CSG. RU LD LINE. RECOVERED 45 FULL JTS AND 1 PARTIAL PIECE. RECOVERED A GRAND TOTAL OF 58 FULL JTS AND 2 PARTIAL PIECES. LD CSG HANDLING TOOLS. SWI AND SD FOR THE WEEKEND.

6/28/2021 - **CHECK WELL PRESSURES. SICP-0 PSI. SIBHP- 0 PSI.** MIRU WELLCHECK SERVICES. PT THE TESTING UNIT TO 640 PSI. TESTED GOOD. **CONDUCTED MIT ON 7" & 4 1/2" CSG STRING TO 560 PSI. TEST WAS GOOD. WITNESSED BY JOHN DURHAM OF NMOCD.** RELEASED PRESSURE, RD, RELEASED WELLCHECK SERVICES. ND BOP ASSEMBLY AND TBG HEAD. NU PROD TBG HEAD & BOP ASSEMBLY. INSTALL 2 3/8" PIPE RAMS. FUNCTION TEST BOP ASSEMBLY. TEST GOOD. TIH W/ 3" DRILL COLLARS FROM DERRICK. TOO H LD ONTO FLOAT. MU RETRIEVING HEAD FOR RBP. TIW TO 2,500' TO UNLOAD WELL. RU AIR UNIT LINE TO TBG SWIVEL. TIW TO RBP AT 5,130'. RU AIR UNIT TO TBG SWIVEL. CO SAND ABOVE RBP. SET DOWN AND LATCH RBP. UNSET RBP AT 5,130'. SD AIR/MIST. RID OFF OF TBG. TOO H W/ WORK STRING TBG & RBP. LD WORK STRING. LD RBP ASSEMBLY. MU MULE SHOE COLLAR. TIH REMAINING WORK STRING. LIGHTNING STORM IN THE AREA. SWI AND SD FOR THE EVENING.

6/29/2021 - **CHECK WELL PRESSURES. SITP-0 PSI. SICP-120 PSI. SIBHP- 0 PSI.** CONTINUE TOO H W/ WORK STRING TBG. MU PRODUCTION BHA ASSEMBLY. PREPARE DRIFTING TOOLS FOR 2 3/8" TBG. INSTALL TBG HANGER & LAND. **248 JTS 2-3/8" 4.7# J-55 PRODUCTION TBG LANDED AT 7,923.16' K.B. (13.0' K.B.). TOP OF 1.78" I.D. SEAT NIPPLE AT 7,921.21' K.B.** ND BOP ASSEMBLY. NU WH WITH SEAL SLEEVE PREP. TEST TBG STRING TO 500 PSI. TEST GOOD. PUMP OFF EXPENDABLE CHECK AT 1,100 PSI. SIW. RD EQUIPMENT. WELL REPAIR OPERATIONS COMPLETED.

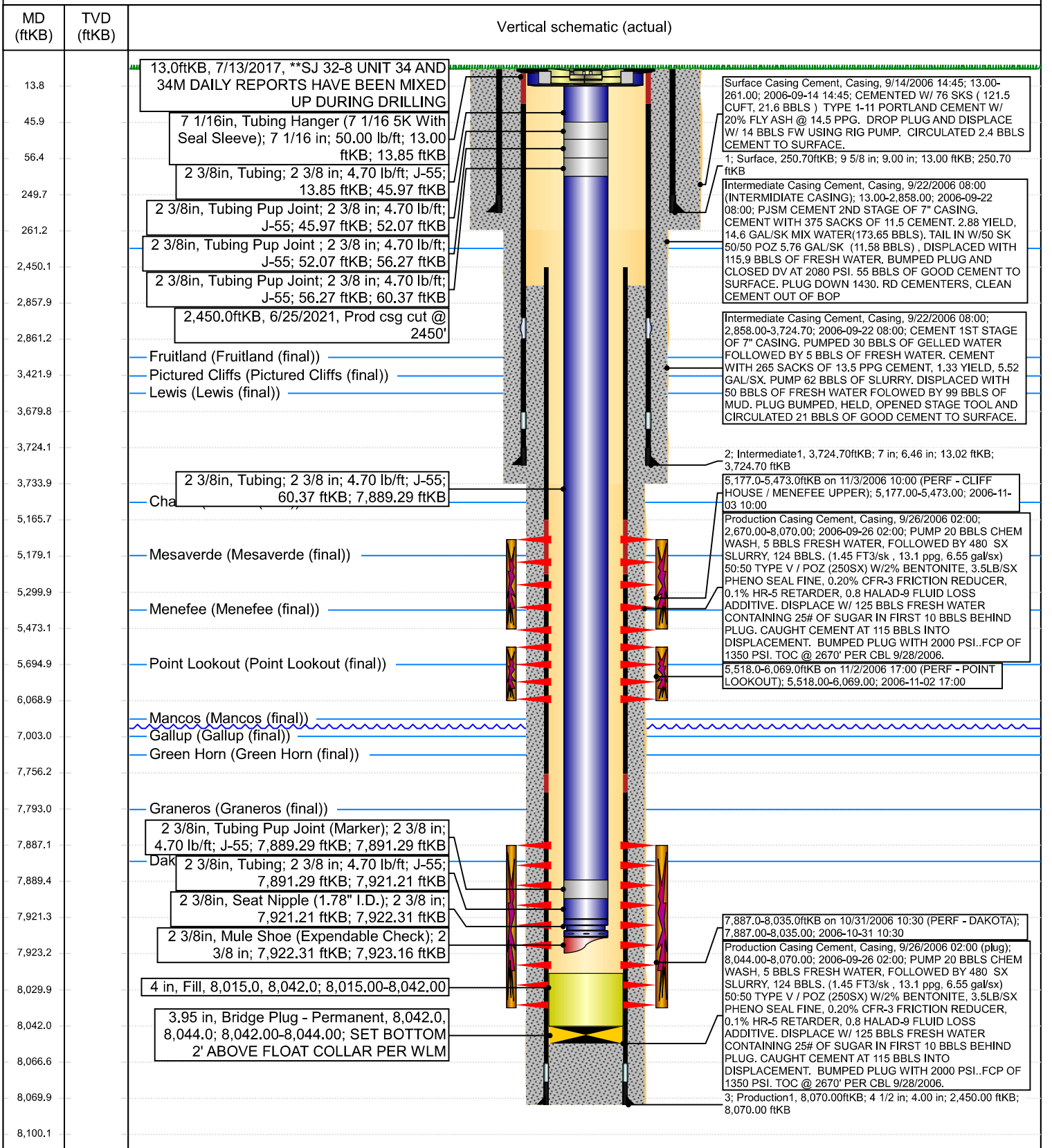


Current Schematic - Version 3

Well Name: SAN JUAN 32-8 UNIT #34

| | | | | | |
|-----------------------------------|---|----------------------------------|--------------------------------|--------------------------------|-------------------------------------|
| API / UWI 3004533150 | Surface Legal Location 022-031N-008W-B | Field Name MV/DK COM | Route 0406 | State/Province NEW MEXICO | Well Configuration Type Vertical |
| Ground Elevation (ft) 6,526.00 | Original KB/RT Elevation (ft) 6,539.00 | KB-Ground Distance (ft) 13.00 | KB-Casing Flange Distance (ft) | KB-Tubing Hanger Distance (ft) | |

Original Hole [Vertical]



Sante Fe Main Office
Phone: (505) 476-3441

General Information
Phone: (505) 629-6116

Online Phone Directory
<https://www.emnrd.nm.gov/ocd/contact-us>

State of New Mexico
Energy, Minerals and Natural Resources
Oil Conservation Division
1220 S. St Francis Dr.
Santa Fe, NM 87505

CONDITIONS

Action 47071

CONDITIONS

| | |
|--|--|
| Operator: HILCORP ENERGY COMPANY 1111 Travis Street Houston, TX 77002 | OGRID: 372171 |
| | Action Number: 47071 |
| | Action Type: [C-103] Sub. Workover (C-103R) |

CONDITIONS

| Created By | Condition | Condition Date |
|----------------|-----------|----------------|
| andrew.fordyce | None | 2/23/2026 |