

Sante Fe Main Office
Phone: (505) 476-3441

General Information
Phone: (505) 629-6116

Online Phone Directory
<https://www.emnrd.nm.gov/ocd/contact-us>

State of New Mexico
Energy, Minerals and Natural Resources
Oil Conservation Division
1220 S. St Francis Dr.
Santa Fe, NM 87505

Form C-101
August 1, 2011
Permit 410727

APPLICATION FOR PERMIT TO DRILL, RE-ENTER, DEEPEN, PLUGBACK, OR ADD A ZONE

| | | |
|--|--|-------------------------------|
| 1. Operator Name and Address MATADOR PRODUCTION COMPANY One Lincoln Centre Dallas, TX 75240 | | 2. OGRID Number 228937 |
| 4. Property Code 338376 | | 3. API Number 30-025-56016 |
| 5. Property Name BRUCE HEATH STATE | | 6. Well No. 119H |

7. Surface Location

| | | | | | | | | | |
|---------------|---------------|-----------------|--------------|--------------|------------------|---------------|-----------------|---------------|---------------|
| UL - Lot P | Section 35 | Township 23S | Range 35E | Lot Idn P | Feet From 175 | N/S Line S | Feet From 10 | E/W Line E | County Lea |
|---------------|---------------|-----------------|--------------|--------------|------------------|---------------|-----------------|---------------|---------------|

8. Proposed Bottom Hole Location

| | | | | | | | | | |
|---------------|---------------|-----------------|--------------|--------------|------------------|---------------|-------------------|---------------|---------------|
| UL - Lot O | Section 35 | Township 23S | Range 35E | Lot Idn O | Feet From 110 | N/S Line S | Feet From 2311 | E/W Line E | County Lea |
|---------------|---------------|-----------------|--------------|--------------|------------------|---------------|-------------------|---------------|---------------|

9. Pool Information

| | |
|-------------------------------------|-------|
| WC-025 G-08 S233528D;LWR BONE SPRIN | 97958 |
|-------------------------------------|-------|

Additional Well Information

| | | | | |
|---------------------------|-----------------------------|--|-------------------------|------------------------------------|
| 11. Work Type New Well | 12. Well Type OIL | 13. Cable/Rotary | 14. Lease Type State | 15. Ground Level Elevation 3484 |
| 16. Multiple N | 17. Proposed Depth 20299 | 18. Formation Bone Spring | 19. Contractor | 20. Spud Date 7/14/2026 |
| Depth to Ground water | | Distance from nearest fresh water well | | Distance to nearest surface water |

We will be using a closed-loop system in lieu of lined pits

21. Proposed Casing and Cement Program

| Type | Hole Size | Casing Size | Casing Weight/ft | Setting Depth | Sacks of Cement | Estimated TOC |
|------|-----------|-------------|------------------|---------------|-----------------|---------------|
| Surf | 17.5 | 13.375 | 54.5 | 1947 | 1229 | 0 |
| Int1 | 12.25 | 9.625 | 40 | 5688 | 1621 | 0 |
| Prod | 8.75 | 5.5 | 20 | 20299 | 2047 | 1924 |

Casing/Cement Program: Additional Comments

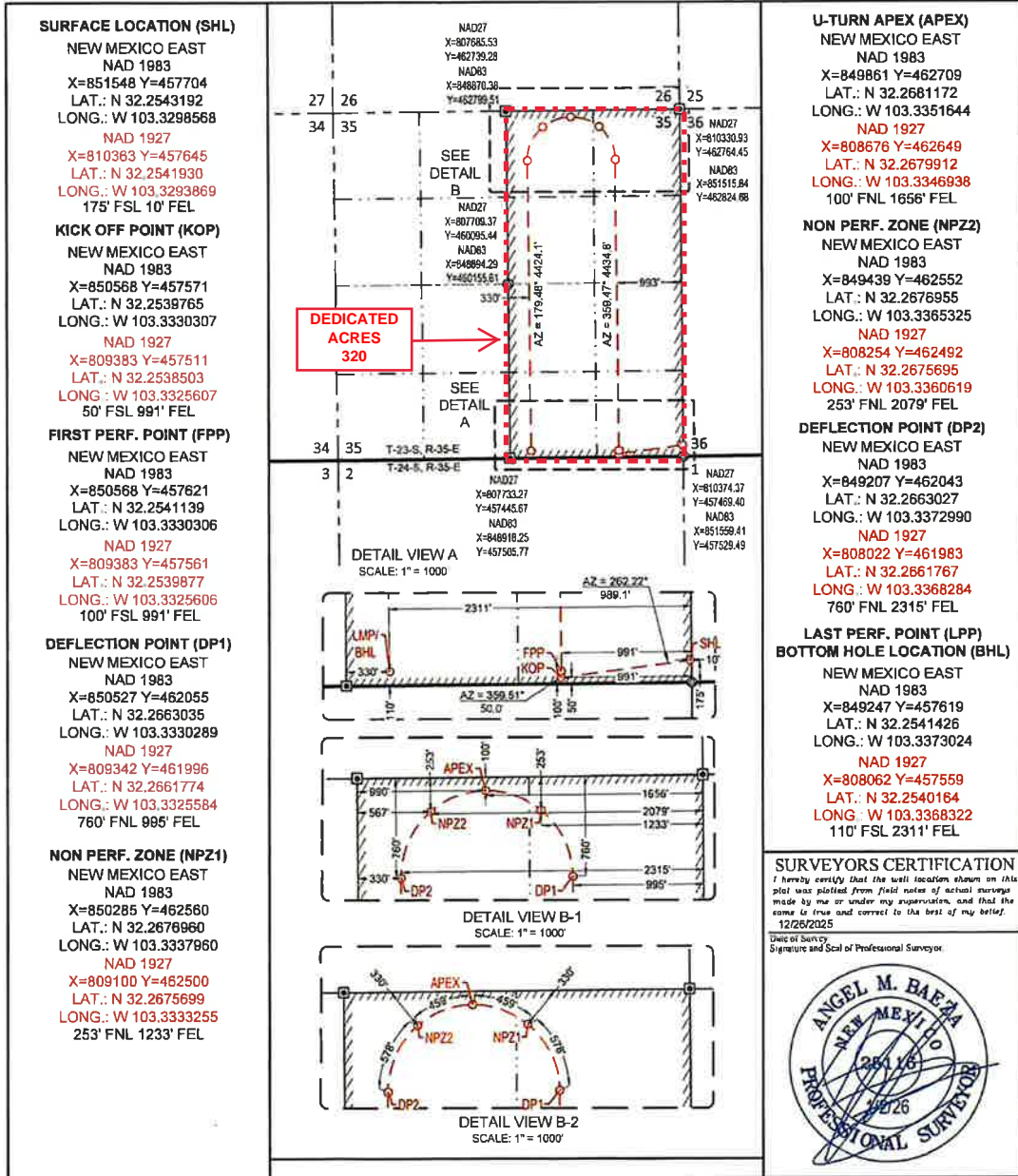
| |
|---|
| Option to drill surface hole with surface setting rig. Option to cement surface casing offline. Option to run DV tool and Packer. Option to drill 7.875" production hole. |
|---|

22. Proposed Blowout Prevention Program

| Type | Working Pressure | Test Pressure | Manufacturer |
|------------|------------------|---------------|--------------|
| Annular | 5000 | 3000 | Cameron |
| Double Ram | 10000 | 5000 | Cameron |
| Pipe | 10000 | 5000 | Cameron |

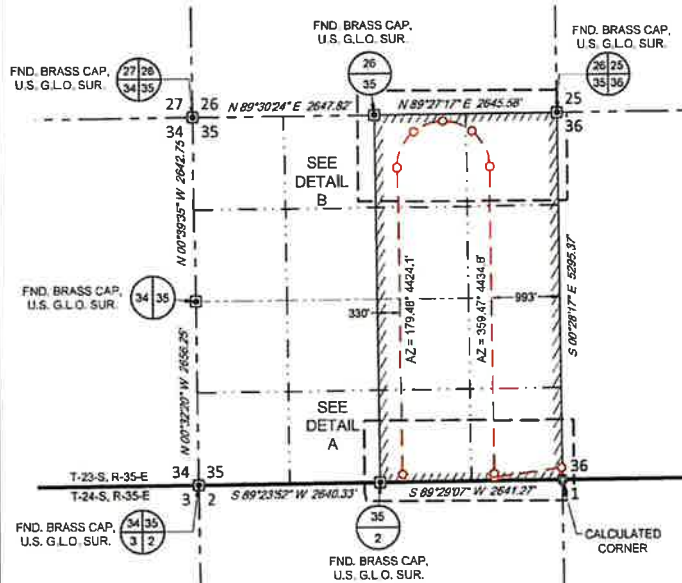
| | | |
|---|----------------------------------|---------------------------------|
| 23. I hereby certify that the information given above is true and complete to the best of my knowledge and belief. I hereby certify that no additives containing PFAS chemicals will be added to the completion or recompletion of this well. I further certify I have complied with 19.15.14.9 (A) NMAC <input checked="" type="checkbox"/> and/or 19.15.14.9 (B) NMAC <input checked="" type="checkbox"/> if applicable. | OIL CONSERVATION DIVISION | |
| Signature: | | |
| Printed Name: Electronically filed by Brett A Jennings | Approved By: Jeffrey Harrison | |
| Title: Regulatory Analyst | Title: Petroleum Specialist III | |
| Email Address: brett.jennings@matadorresources.com | Approved Date: 3/9/2026 | Expiration Date: 3/9/2028 |
| Date: 3/6/2026 | Phone: 972-629-2160 | Conditions of Approval Attached |

| | | |
|---|---|---|
| <p>C-102</p> <p>Submit Electronically Via OCD Permitting</p> | <p>State of New Mexico Energy, Minerals & Natural Resources Department OIL CONSERVATION DIVISION</p> | <p>Revised July 9, 2024</p> |
| | | <p>Submittal Type:</p> <p><input checked="" type="checkbox"/> Initial Submittal</p> <p><input type="checkbox"/> Amended Report</p> <p><input type="checkbox"/> As Drilled</p> |
| <p>Property Name and Well Number</p> <p style="text-align: center;">BRUCE HEATH STATE 119H</p> | | |



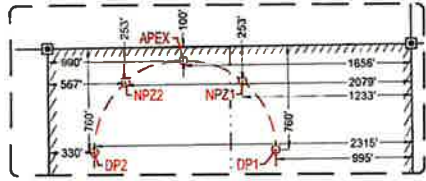
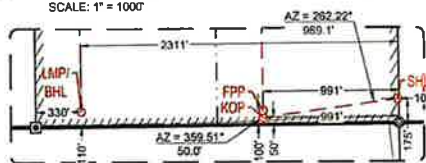


SECTION 35, TOWNSHIP 23-S, RANGE 35-E, N.M.P.M.
LEA COUNTY, NEW MEXICO



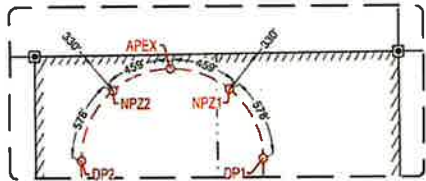
DETAIL VIEW A

SCALE: 1" = 1000'



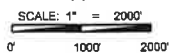
DETAIL VIEW B-1

SCALE: 1" = 1000'



DETAIL VIEW B-2

SCALE: 1" = 1000'



LEASE NAME & WELL NO.: BRUCE HEATH STATE 119H

SECTION 35 TWP 23-S RGE 35-E SURVEY N.M.P.M.
COUNTY LEA STATE NM
DESCRIPTION 175' FSL & 10' FEL

DISTANCE & DIRECTION
FROM INT. OF NM-128, & NM-18 N. GO NORTH ON NM-18 ±6.3 MILES.
THENCE WEST (LEFT) ON COOPER CEMETERY RD ±7.2 MILES. THENCE
NORTH (RIGHT) ON A LEASE RD. ±3.7 MILES. THENCE CONTINUE ON A
PROPOSED RD. ±585 FEET TO A POINT ±185 FEET SOUTHWEST OF THE
LOCATION.

ALL BEARINGS, DISTANCES, AND COORDINATE VALUES CONTAINED HEREON ARE GRID BASED UPON THE NEW MEXICO COORDINATE SYSTEM OF 1983, EAST ZONE, U.S. SURVEY FEET
THIS EASEMENT/RIGHT OF WAY LOCATION SHOWN HEREON HAS BEEN SURVEYED ON THE GROUND UNDER MY SUPERVISION AND PREPARED ACCORDING TO THE EVIDENCE FOUND AT THE TIME OF SURVEY. AND DATA PROVIDED BY MATADOR PRODUCTION COMPANY. THIS CERTIFICATION IS MADE AND LIMITED TO THOSE PERSONS OR ENTITIES SHOWN ON THE FACE OF THIS PLAT AND IS NON-TRANSFERABLE. THIS SURVEY IS CERTIFIED FOR THIS TRANSACTION ONLY.
AS OF THE DATE OF SURVEY, ALL ABOVE GROUND APPURTENANCES WITHIN 300' OF THE STAKED LOCATION ARE SHOWN HEREON.

SURFACE LOCATION (SHL)

NEW MEXICO EAST
NAD 1983
X=851548 Y=457704
LAT.: N 32.2543192
LONG.: W 103.3288568
175' FSL 10' FEL

KICK OFF POINT (KOP)

NEW MEXICO EAST
NAD 1983
X=850568 Y=457571
LAT.: N 32.2539765
LONG.: W 103.3330307
50' FSL 991' FEL

FIRST PERF. POINT (FPP)

NEW MEXICO EAST
NAD 1983
X=850568 Y=457621
LAT.: N 32.2541139
LONG.: W 103.3330306
100' FSL 991' FEL

DEFLECTION POINT (DP1)

NEW MEXICO EAST
NAD 1983
X=850527 Y=462055
LAT.: N 32.2663035
LONG.: W 103.3330289
760' FNL 995' FEL

NON PERF. ZONE (NPZ1)

NEW MEXICO EAST
NAD 1983
X=850285 Y=462560
LAT.: N 32.2676960
LONG.: W 103.3337960
253' FNL 1233' FEL

U-TURN APEX (APEX)

NEW MEXICO EAST
NAD 1983
X=849861 Y=462709
LAT.: N 32.2681172
LONG.: W 103.3351644
100' FNL 1656' FEL

NON PERF. ZONE (NPZ2)

NEW MEXICO EAST
NAD 1983
X=849439 Y=462552
LAT.: N 32.2676955
LONG.: W 103.3365325
253' FNL 2079' FEL

DEFLECTION POINT (DP2)

NEW MEXICO EAST
NAD 1983
X=849207 Y=462043
LAT.: N 32.2663027
LONG.: W 103.3372990
760' FNL 2315' FEL

LAST PERF. POINT (LPP)

BOTTOM HOLE LOCATION (BHL)

NEW MEXICO EAST
NAD 1983
X=849247 Y=457619
LAT.: N 32.2541426
LONG.: W 103.3373024
110' FSL 2311' FEL



Angel M. Baeza, P.S. No. 25116

TOPOGRAPHIC
LOYALTY INNOVATION LEGACY
481 WINSBOTT ROAD, Ste. 200 - BENBROOK, TEXAS 78126
TELEPHONE: (817) 744-7517 - FAX: (817) 744-7524
804 WEST INDIANA - MCKINNEY, TEXAS 75071
TELEPHONE: (432) 882-1653 OR (800) 787-1653 - FAX: (432) 882-1743
WWW.TOPOGRAPHIC.COM

Sante Fe Main Office
Phone: (505) 476-3441

General Information
Phone: (505) 629-6116

Online Phone Directory
<https://www.emnrd.nm.gov/ocd/contact-us>

State of New Mexico
Energy, Minerals and Natural Resources
Oil Conservation Division
1220 S. St Francis Dr.
Santa Fe, NM 87505

Form APD Comments

Permit 410727

PERMIT COMMENTS

| | | |
|---|-----------------------------|----------------------------------|
| Operator Name and Address: MATADOR PRODUCTION COMPANY [228937] One Lincoln Centre Dallas, TX 75240 | | API Number: 30-025-56016 |
| | | Well: BRUCE HEATH STATE #119H |
| Created By | Comment | Comment Date |
| jeffrey.harrison | Infill well to 30-025-55797 | 3/9/2026 |

Sante Fe Main Office
Phone: (505) 476-3441

General Information
Phone: (505) 629-6116

Online Phone Directory
<https://www.emnrd.nm.gov/ocd/contact-us>

**State of New Mexico
Energy, Minerals and Natural Resources
Oil Conservation Division
1220 S. St Francis Dr.
Santa Fe, NM 87505**

Form APD Conditions

Permit 410727

PERMIT CONDITIONS OF APPROVAL

| | |
|---|----------------------------------|
| Operator Name and Address: MATADOR PRODUCTION COMPANY [228937] One Lincoln Centre Dallas, TX 75240 | API Number: 30-025-56016 |
| | Well: BRUCE HEATH STATE #119H |

| OCD Reviewer | Condition |
|------------------|---|
| jeffrey.harrison | No additives containing PFAS chemicals will be added to the drilling fluids or completion fluids used during drilling, completions, or recompletions operations. |
| jeffrey.harrison | This well is within the Capitan Reef. The first intermediate casing string shall be sat and cemented back to surface immediately below the base of the Capitan Reef. |
| jeffrey.harrison | In Capitan Reef areas if lost circulation (50% or greater) occurs below the base of the salt, the operator shall switch to freshwater mud until the intermediate casing is set. |
| jeffrey.harrison | Cement is required to circulate on both surface and intermediate1 strings of casing. |
| jeffrey.harrison | If the method of isolation was not by circulation, a CBL must be performed; if strata isolation is not achieved, then remediation will be required before further operations. |
| jeffrey.harrison | File As Drilled C-102 and a directional Survey with C-104 completion packet. |
| jeffrey.harrison | Notify the OCD 24 hours prior to casing & cement. |
| jeffrey.harrison | A [C-103] Sub. Drilling (C-103N) is required within (10) days of spud. |
| jeffrey.harrison | Oil base muds are not to be used until fresh water zones are cased and cemented providing isolation from the oil or diesel. This includes synthetic oils. Oil based mud, drilling fluids and solids must be contained in a steel closed loop system. |
| jeffrey.harrison | Once the well is spud, to prevent ground water contamination through whole or partial conduits from the surface, the operator shall drill without interruption through the fresh water zone or zones and shall immediately set in cement the water protection string. |

**Addendum to Natural Gas Management Plan for Matador's
Bruce Heath State 119H, BJ Frazier State 200H**

VI. Separation Equipment

Flow from the wells will be routed via a flowline to a 48"x15' three phase separator dedicated to the well. The first stage separators are sized with input from BRE ProMax and API 12J. Anticipated production rates can be seen in the below table. Liquid retention times at expected maximum rates will be >3 minutes. Gas will be routed from the first stage separator to sales. Hydrocarbon liquids are dumped from the first stage separator and commingled to one or more heater treaters. The flash gas from the heater treater(s) could either be sent to sales or routed to a compressor if the sales line pressure is higher than the MAWP of the heater treater (125 psi). From the heater treaters, hydrocarbon liquid will be routed to the tanks where vapor is compressed by a VRU if technically feasible to either sales or a compressor if the sales line pressure is higher than the VRU's maximum discharge pressure (~150 psi). Therefore, Matador has sized our separation equipment to optimize gas capture and our separation equipment is of sufficient size to handle the expected volumes of gas.

| Well Name | Anticipated Oil BBL/D | Anticipated Gas MCF/D | Anticipated Produced Water BBL/D |
|------------------------|-----------------------|-----------------------|----------------------------------|
| Bruce Heath State 119H | 800 | 1,700 | 2,200 |
| BJ Frazier State 200H | 800 | 1,700 | 2,200 |

VII. Operation Practices

Although not a complete recitation of all our efforts to comply with a subsection A through F of 19.15.27.8 NMAC, a summary is as follows. During drilling, Matador will have a properly sized flare stack at least 100 feet from the nearest surface hole. During initial flowback we will route the flowback fluids into completion or storage tanks and, to the extent possible, flare rather than vent any gas. We will commence operation of a separator as soon as technically feasible, and have instructed our team that we want to connect the gas to sales as soon as possible but not later than 30 days after initial flowback.

Regarding production operations, we have designed our production facilities to be compliant with the requirements of Part E of 19.15.27.8 NMAC. We will instruct our team to perform the AVOs on the frequency required under the rules. While the well is producing, we will take steps to minimize flaring during maintenance, as set forth below, and we have a process in place for the measuring of any flared gas and the reporting of any reportable flaring events.

VII. Best Management Practices

Steps are taken to minimize venting during active or planned maintenance when technically feasible including:

- Isolating the affected component and reducing pressure through process piping
- Blowing down the equipment being maintained to a control device

- Performing preventative maintenance and minimizing the duration of maintenance activities
- Shutting in sources of supply as possible
- Other steps that are available depending on the maintenance being performed

Matador Production Company

Antelope Ridge

Bruce Heath

Bruce Heath State #119H

Wellbore #1

State Plan #1

Anticollision Summary Report

05 January, 2026

Anticollision Summary Report

| | | | |
|---------------------------|----------------------------|-------------------------------------|-----------------------------|
| Company: | Matador Production Company | Local Co-ordinate Reference: | Well Bruce Heath State#119H |
| Project: | Antelope Ridge | TVD Reference: | KB @ 3512.5usft |
| Reference Site: | Bruce Heath | MD Reference: | KB @ 3512.5usft |
| Site Error: | 0.0 usft | North Reference: | Grid |
| Reference Well: | Bruce Heath State #119H | Survey Calculation Method: | Minimum Curvature |
| Well Error: | 0.0 usft | Output errors are at | 2.00 sigma |
| Reference Wellbore | Wellbore #1 | Database: | EDM 5000.14 Single User Db |
| Reference Design: | State Plan #1 | Offset TVD Reference: | Offset Datum |

| | | | |
|-------------------------------------|---|-----------------------|---------------------|
| Reference | State Plan #1 | | |
| Filter type: | NO GLOBAL FILTER: Using user defined selection & filtering criteria | | |
| Interpolation Method: | Stations | Error Model: | ISCWSA |
| Depth Range: | Unlimited | Scan Method: | Closest Approach 3D |
| Results Limited by: | Maximum center-center distance of 10,000.0 us | Error Surface: | Pedal Curve |
| Warning Levels Evaluated at: | 2.00 Sigma | Casing Method: | Not applied |

| | | | | |
|----------------------------|------------------|-----------------------------|------------------|---------------------|
| Survey Tool Program | Date | 1/5/2026 | | |
| From (usft) | To (usft) | Survey (Wellbore) | Tool Name | Description |
| 0.0 | 20,299.6 | State Plan #1 (Wellbore #1) | MWD | OWSG MWD - Standard |

| Site Name | Reference Measured Depth (usft) | Offset Measured Depth (usft) | Distance Between Centres (usft) | Distance Between Ellipses (usft) | Separation Factor | Warning |
|---|---------------------------------|------------------------------|---------------------------------|----------------------------------|-------------------|---------------------|
| BJ Frazier | | | | | | |
| BJ Frazier State #110H - Wellbore #1 - State Plan #1 | 4,000.0 | 4,001.0 | 46.2 | 18.0 | 1.639 | CC, ES |
| BJ Frazier State #110H - Wellbore #1 - State Plan #1 | 4,100.0 | 4,101.0 | 47.2 | 18.3 | 1.633 | SF |
| BJ Frazier State #200H - Wellbore #1 - State Plan #1 | 4,000.0 | 3,999.0 | 30.0 | 1.8 | 1.063 | Level 2, CC, ES, SF |
| Bruce Heath | | | | | | |
| Bruce Heath State #209H - Wellbore #1 - State Plan #1 | 4,000.0 | 4,000.0 | 34.9 | 6.7 | 1.236 | Level 2, CC |
| Bruce Heath State #209H - Wellbore #1 - State Plan #1 | 4,600.0 | 4,600.8 | 35.3 | 2.9 | 1.091 | Level 2, ES, SF |

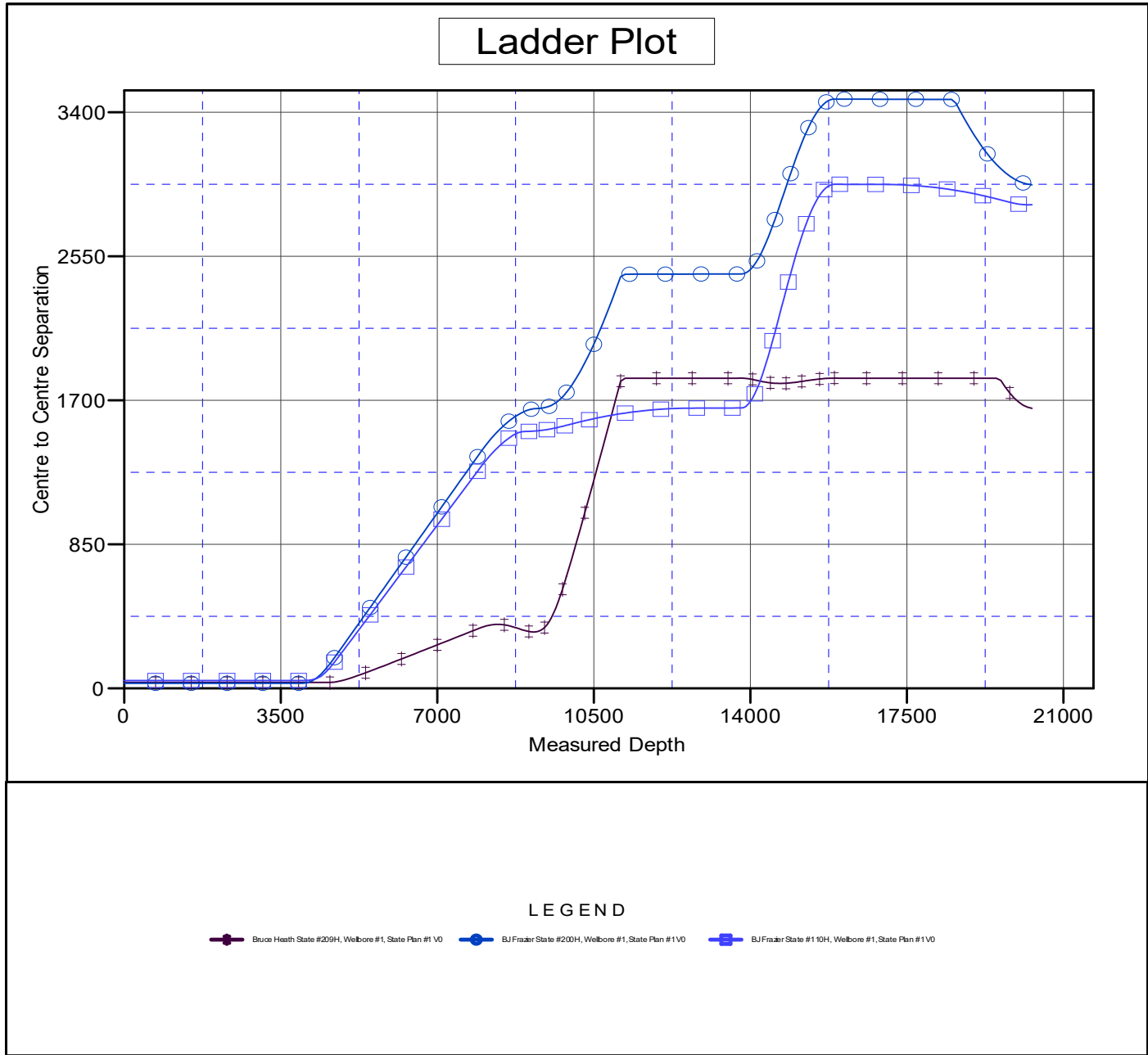
CC - Min centre to center distance or convergent point, SF - min separation factor, ES - min ellipse separation

Anticollision Summary Report

| | | | |
|---------------------------|----------------------------|-------------------------------------|------------------------------|
| Company: | Matador Production Company | Local Co-ordinate Reference: | Well Bruce Heath State #119H |
| Project: | Antelope Ridge | TVD Reference: | KB @ 3512.5usft |
| Reference Site: | Bruce Heath | MD Reference: | KB @ 3512.5usft |
| Site Error: | 0.0 usft | North Reference: | Grid |
| Reference Well: | Bruce Heath State #119H | Survey Calculation Method: | Minimum Curvature |
| Well Error: | 0.0 usft | Output errors are at | 2.00 sigma |
| Reference Wellbore | Wellbore #1 | Database: | EDM 5000.14 Single User Db |
| Reference Design: | State Plan #1 | Offset TVD Reference: | Offset Datum |

Reference Depths are relative to KB @ 3512.5usft
 Offset Depths are relative to Offset Datum
 Central Meridian is 104° 20' 0.000 W

Coordinates are relative to: Bruce Heath State #119H
 Coordinate System is US State Plane 1927 (Exact solution), New Mexico East 30
 Grid Convergence at Surface is: 0.54°

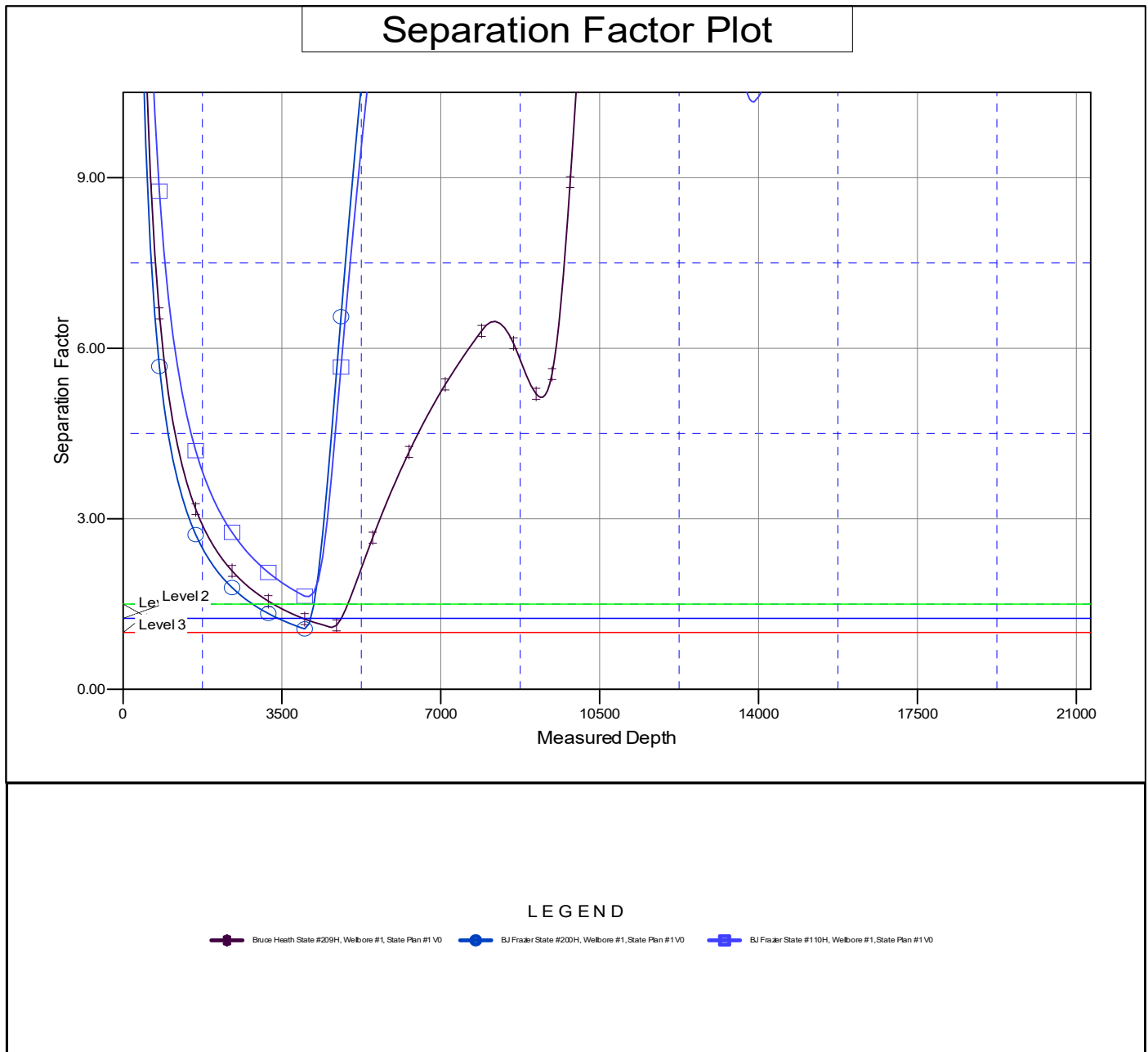


Anticollision Summary Report

| | | | |
|---------------------------|----------------------------|-------------------------------------|------------------------------|
| Company: | Matador Production Company | Local Co-ordinate Reference: | Well Bruce Heath State #119H |
| Project: | Antelope Ridge | TVD Reference: | KB @ 3512.5usft |
| Reference Site: | Bruce Heath | MD Reference: | KB @ 3512.5usft |
| Site Error: | 0.0 usft | North Reference: | Grid |
| Reference Well: | Bruce Heath State #119H | Survey Calculation Method: | Minimum Curvature |
| Well Error: | 0.0 usft | Output errors are at | 2.00 sigma |
| Reference Wellbore | Wellbore #1 | Database: | EDM 5000.14 Single User Db |
| Reference Design: | State Plan #1 | Offset TVD Reference: | Offset Datum |

Reference Depths are relative to KB @ 3512.5usft
 Offset Depths are relative to Offset Datum
 Central Meridian is 104° 20' 0.000 W

Coordinates are relative to: Bruce Heath State #119H
 Coordinate System is US State Plane 1927 (Exact solution), New Mexico East 30
 Grid Convergence at Surface is: 0.54°



Matador Production Company

**Antelope Ridge
Bruce Heath
Bruce Heath State #119H**

Wellbore #1

Plan: State Plan #1

Standard Planning Report

05 January, 2026

Planning Report

| | | | |
|------------------|----------------------------|-------------------------------------|------------------------------|
| Database: | EDM 5000.14 Single User Db | Local Co-ordinate Reference: | Well Bruce Heath State #119H |
| Company: | Matador Production Company | TVD Reference: | KB @ 3512.5usft |
| Project: | Antelope Ridge | MD Reference: | KB @ 3512.5usft |
| Site: | Bruce Heath | North Reference: | Grid |
| Well: | Bruce Heath State #119H | Survey Calculation Method: | Minimum Curvature |
| Wellbore: | Wellbore #1 | | |
| Design: | State Plan #1 | | |

| | | | |
|--------------------|--------------------------------------|----------------------|----------------|
| Project | Antelope Ridge | | |
| Map System: | US State Plane 1927 (Exact solution) | System Datum: | Mean Sea Level |
| Geo Datum: | NAD 1927 (NADCON CONUS) | | |
| Map Zone: | New Mexico East 3001 | | |

| | | | | | |
|------------------------------|-------------|---------------------|-----------------|--------------------------|-------------------|
| Site | Bruce Heath | | | | |
| Site Position: | | Northing: | 457,609.87 usft | Latitude: | 32° 15' 14.750 N |
| From: | Lat/Long | Easting: | 810,363.64 usft | Longitude: | 103° 19' 45.793 W |
| Position Uncertainty: | 0.0 usft | Slot Radius: | 13-3/16 " | Grid Convergence: | 0.54 ° |

| | | | | | | |
|-----------------------------|-------------------------|-----------|----------------------------|-----------------|----------------------|-------------------|
| Well | Bruce Heath State #119H | | | | | |
| Well Position | +N/-S | 34.9 usft | Northing: | 457,644.76 usft | Latitude: | 32° 15' 15.095 N |
| | +E/-W | -0.3 usft | Easting: | 810,363.32 usft | Longitude: | 103° 19' 45.793 W |
| Position Uncertainty | | 0.0 usft | Wellhead Elevation: | | Ground Level: | 3,484.0 usft |

| | | | | | | |
|------------------|-------------------|--------------------|------------------------|----------------------|----------------------------|--|
| Wellbore | Wellbore #1 | | | | | |
| Magnetics | Model Name | Sample Date | Declination (°) | Dip Angle (°) | Field Strength (nT) | |
| | IGRF2015 | 12/31/2024 | 6.01 | 60.02 | 47,204.41712187 | |

| | | | | |
|--------------------------|--------------------------------|---------------------|----------------------|----------------------|
| Design | State Plan #1 | | | |
| Audit Notes: | | | | |
| Version: | Phase: | PROTOTYPE | Tie On Depth: | 0.0 |
| Vertical Section: | Depth From (TVD) (usft) | +N/-S (usft) | +E/-W (usft) | Direction (°) |
| | 0.0 | 0.0 | 0.0 | 359.47 |

| | | | | | |
|---------------------------------|------------------------|--------------------------------------|---------------------|----------------|--|
| Plan Survey Tool Program | Date | 1/5/2026 | | | |
| Depth From (usft) | Depth To (usft) | Survey (Wellbore) | Tool Name | Remarks | |
| 1 | 0.0 | 20,299.6 State Plan #1 (Wellbore #1) | MWD | | |
| | | | OWSG MWD - Standard | | |

Planning Report

| | | | |
|------------------|----------------------------|-------------------------------------|------------------------------|
| Database: | EDM 5000.14 Single User Db | Local Co-ordinate Reference: | Well Bruce Heath State #119H |
| Company: | Matador Production Company | TVD Reference: | KB @ 3512.5usft |
| Project: | Antelope Ridge | MD Reference: | KB @ 3512.5usft |
| Site: | Bruce Heath | North Reference: | Grid |
| Well: | Bruce Heath State #119H | Survey Calculation Method: | Minimum Curvature |
| Wellbore: | Wellbore #1 | | |
| Design: | State Plan #1 | | |

| Plan Sections | | | | | | | | | | |
|-----------------------|-----------------|-------------|-----------------------|--------------|--------------|-------------------------|------------------------|-----------------------|---------|--------------------|
| Measured Depth (usft) | Inclination (°) | Azimuth (°) | Vertical Depth (usft) | +N/-S (usft) | +E/-W (usft) | Dogleg Rate (°/100usft) | Build Rate (°/100usft) | Turn Rate (°/100usft) | TFO (°) | Target |
| 0.0 | 0.00 | 0.00 | 0.0 | 0.0 | 0.0 | 0.00 | 0.00 | 0.00 | 0.00 | |
| 4,000.0 | 0.00 | 0.00 | 4,000.0 | 0.0 | 0.0 | 0.00 | 0.00 | 0.00 | 0.00 | |
| 4,702.6 | 14.05 | 262.23 | 4,695.5 | -11.6 | -84.9 | 2.00 | 2.00 | 0.00 | 262.23 | |
| 7,953.9 | 14.05 | 262.23 | 7,849.6 | -118.3 | -867.1 | 0.00 | 0.00 | 0.00 | 0.00 | |
| 8,890.7 | 0.00 | 0.00 | 8,777.0 | -133.8 | -980.3 | 1.50 | -1.50 | 0.00 | 180.00 | |
| 8,990.7 | 0.00 | 0.00 | 8,877.0 | -133.8 | -980.3 | 0.00 | 0.00 | 0.00 | 0.00 | KOP - Bruce Heath |
| 9,890.7 | 90.00 | 359.47 | 9,450.0 | 439.2 | -985.6 | 10.00 | 10.00 | 0.00 | 359.47 | |
| 9,891.0 | 90.00 | 359.48 | 9,450.0 | 439.5 | -985.6 | 2.00 | -0.17 | 1.99 | 94.94 | |
| 13,802.9 | 90.00 | 359.48 | 9,450.0 | 4,351.2 | -1,021.3 | 0.00 | 0.00 | 0.00 | 0.00 | DP1 - Bruce Heath |
| 14,839.1 | 90.00 | 269.39 | 9,450.0 | 5,004.2 | -1,687.3 | 8.69 | 0.00 | -8.69 | -90.00 | APEX - Bruce Heath |
| 15,875.4 | 90.00 | 179.56 | 9,450.0 | 4,338.2 | -2,341.3 | 8.67 | 0.00 | -8.67 | -90.00 | DP2 - Bruce Heath |
| 15,879.6 | 90.00 | 179.48 | 9,450.0 | 4,334.1 | -2,341.3 | 2.00 | 0.01 | -2.00 | -89.57 | |
| 20,299.6 | 90.00 | 179.48 | 9,450.0 | -85.8 | -2,301.3 | 0.00 | 0.00 | 0.00 | 0.00 | BHL - Bruce Heath |

Planning Report

| | | | |
|------------------|----------------------------|-------------------------------------|------------------------------|
| Database: | EDM 5000.14 Single User Db | Local Co-ordinate Reference: | Well Bruce Heath State #119H |
| Company: | Matador Production Company | TVD Reference: | KB @ 3512.5usft |
| Project: | Antelope Ridge | MD Reference: | KB @ 3512.5usft |
| Site: | Bruce Heath | North Reference: | Grid |
| Well: | Bruce Heath State #119H | Survey Calculation Method: | Minimum Curvature |
| Wellbore: | Wellbore #1 | | |
| Design: | State Plan #1 | | |

| Planned Survey | | | | | | | | | |
|--------------------------|-----------------|-------------|-----------------------|--------------|--------------|-------------------------|-------------------------|------------------------|-----------------------|
| Measured Depth (usft) | Inclination (°) | Azimuth (°) | Vertical Depth (usft) | +N/-S (usft) | +E/-W (usft) | Vertical Section (usft) | Dogleg Rate (°/100usft) | Build Rate (°/100usft) | Turn Rate (°/100usft) |
| 0.0 | 0.00 | 0.00 | 0.0 | 0.0 | 0.0 | 0.0 | 0.00 | 0.00 | 0.00 |
| 100.0 | 0.00 | 0.00 | 100.0 | 0.0 | 0.0 | 0.0 | 0.00 | 0.00 | 0.00 |
| 200.0 | 0.00 | 0.00 | 200.0 | 0.0 | 0.0 | 0.0 | 0.00 | 0.00 | 0.00 |
| 300.0 | 0.00 | 0.00 | 300.0 | 0.0 | 0.0 | 0.0 | 0.00 | 0.00 | 0.00 |
| 400.0 | 0.00 | 0.00 | 400.0 | 0.0 | 0.0 | 0.0 | 0.00 | 0.00 | 0.00 |
| 500.0 | 0.00 | 0.00 | 500.0 | 0.0 | 0.0 | 0.0 | 0.00 | 0.00 | 0.00 |
| 600.0 | 0.00 | 0.00 | 600.0 | 0.0 | 0.0 | 0.0 | 0.00 | 0.00 | 0.00 |
| 700.0 | 0.00 | 0.00 | 700.0 | 0.0 | 0.0 | 0.0 | 0.00 | 0.00 | 0.00 |
| 800.0 | 0.00 | 0.00 | 800.0 | 0.0 | 0.0 | 0.0 | 0.00 | 0.00 | 0.00 |
| 900.0 | 0.00 | 0.00 | 900.0 | 0.0 | 0.0 | 0.0 | 0.00 | 0.00 | 0.00 |
| 1,000.0 | 0.00 | 0.00 | 1,000.0 | 0.0 | 0.0 | 0.0 | 0.00 | 0.00 | 0.00 |
| 1,100.0 | 0.00 | 0.00 | 1,100.0 | 0.0 | 0.0 | 0.0 | 0.00 | 0.00 | 0.00 |
| 1,200.0 | 0.00 | 0.00 | 1,200.0 | 0.0 | 0.0 | 0.0 | 0.00 | 0.00 | 0.00 |
| 1,300.0 | 0.00 | 0.00 | 1,300.0 | 0.0 | 0.0 | 0.0 | 0.00 | 0.00 | 0.00 |
| 1,400.0 | 0.00 | 0.00 | 1,400.0 | 0.0 | 0.0 | 0.0 | 0.00 | 0.00 | 0.00 |
| 1,500.0 | 0.00 | 0.00 | 1,500.0 | 0.0 | 0.0 | 0.0 | 0.00 | 0.00 | 0.00 |
| 1,600.0 | 0.00 | 0.00 | 1,600.0 | 0.0 | 0.0 | 0.0 | 0.00 | 0.00 | 0.00 |
| 1,700.0 | 0.00 | 0.00 | 1,700.0 | 0.0 | 0.0 | 0.0 | 0.00 | 0.00 | 0.00 |
| 1,800.0 | 0.00 | 0.00 | 1,800.0 | 0.0 | 0.0 | 0.0 | 0.00 | 0.00 | 0.00 |
| 1,900.0 | 0.00 | 0.00 | 1,900.0 | 0.0 | 0.0 | 0.0 | 0.00 | 0.00 | 0.00 |
| 1,912.0 | 0.00 | 0.00 | 1,912.0 | 0.0 | 0.0 | 0.0 | 0.00 | 0.00 | 0.00 |
| Rustler | | | | | | | | | |
| 2,000.0 | 0.00 | 0.00 | 2,000.0 | 0.0 | 0.0 | 0.0 | 0.00 | 0.00 | 0.00 |
| 2,100.0 | 0.00 | 0.00 | 2,100.0 | 0.0 | 0.0 | 0.0 | 0.00 | 0.00 | 0.00 |
| 2,200.0 | 0.00 | 0.00 | 2,200.0 | 0.0 | 0.0 | 0.0 | 0.00 | 0.00 | 0.00 |
| 2,282.0 | 0.00 | 0.00 | 2,282.0 | 0.0 | 0.0 | 0.0 | 0.00 | 0.00 | 0.00 |
| Salado | | | | | | | | | |
| 2,300.0 | 0.00 | 0.00 | 2,300.0 | 0.0 | 0.0 | 0.0 | 0.00 | 0.00 | 0.00 |
| 2,400.0 | 0.00 | 0.00 | 2,400.0 | 0.0 | 0.0 | 0.0 | 0.00 | 0.00 | 0.00 |
| 2,500.0 | 0.00 | 0.00 | 2,500.0 | 0.0 | 0.0 | 0.0 | 0.00 | 0.00 | 0.00 |
| 2,600.0 | 0.00 | 0.00 | 2,600.0 | 0.0 | 0.0 | 0.0 | 0.00 | 0.00 | 0.00 |
| 2,700.0 | 0.00 | 0.00 | 2,700.0 | 0.0 | 0.0 | 0.0 | 0.00 | 0.00 | 0.00 |
| 2,800.0 | 0.00 | 0.00 | 2,800.0 | 0.0 | 0.0 | 0.0 | 0.00 | 0.00 | 0.00 |
| 2,900.0 | 0.00 | 0.00 | 2,900.0 | 0.0 | 0.0 | 0.0 | 0.00 | 0.00 | 0.00 |
| 3,000.0 | 0.00 | 0.00 | 3,000.0 | 0.0 | 0.0 | 0.0 | 0.00 | 0.00 | 0.00 |
| 3,100.0 | 0.00 | 0.00 | 3,100.0 | 0.0 | 0.0 | 0.0 | 0.00 | 0.00 | 0.00 |
| 3,200.0 | 0.00 | 0.00 | 3,200.0 | 0.0 | 0.0 | 0.0 | 0.00 | 0.00 | 0.00 |
| 3,300.0 | 0.00 | 0.00 | 3,300.0 | 0.0 | 0.0 | 0.0 | 0.00 | 0.00 | 0.00 |
| 3,400.0 | 0.00 | 0.00 | 3,400.0 | 0.0 | 0.0 | 0.0 | 0.00 | 0.00 | 0.00 |
| 3,500.0 | 0.00 | 0.00 | 3,500.0 | 0.0 | 0.0 | 0.0 | 0.00 | 0.00 | 0.00 |
| 3,600.0 | 0.00 | 0.00 | 3,600.0 | 0.0 | 0.0 | 0.0 | 0.00 | 0.00 | 0.00 |
| 3,700.0 | 0.00 | 0.00 | 3,700.0 | 0.0 | 0.0 | 0.0 | 0.00 | 0.00 | 0.00 |
| 3,800.0 | 0.00 | 0.00 | 3,800.0 | 0.0 | 0.0 | 0.0 | 0.00 | 0.00 | 0.00 |
| 3,900.0 | 0.00 | 0.00 | 3,900.0 | 0.0 | 0.0 | 0.0 | 0.00 | 0.00 | 0.00 |
| 3,956.0 | 0.00 | 0.00 | 3,956.0 | 0.0 | 0.0 | 0.0 | 0.00 | 0.00 | 0.00 |
| Base Salt/Tansill | | | | | | | | | |
| 4,000.0 | 0.00 | 0.00 | 4,000.0 | 0.0 | 0.0 | 0.0 | 0.00 | 0.00 | 0.00 |
| Start Build 2.00 | | | | | | | | | |
| 4,100.0 | 2.00 | 262.23 | 4,100.0 | -0.2 | -1.7 | -0.2 | 2.00 | 2.00 | 0.00 |
| 4,200.0 | 4.00 | 262.23 | 4,199.8 | -0.9 | -6.9 | -0.9 | 2.00 | 2.00 | 0.00 |
| 4,265.4 | 5.31 | 262.23 | 4,265.0 | -1.7 | -12.2 | -1.5 | 2.00 | 2.00 | 0.00 |
| Yates | | | | | | | | | |
| 4,300.0 | 6.00 | 262.23 | 4,299.5 | -2.1 | -15.5 | -2.0 | 2.00 | 2.00 | 0.00 |
| 4,400.0 | 8.00 | 262.23 | 4,398.7 | -3.8 | -27.6 | -3.5 | 2.00 | 2.00 | 0.00 |

Planning Report

| | | | |
|------------------|----------------------------|-------------------------------------|------------------------------|
| Database: | EDM 5000.14 Single User Db | Local Co-ordinate Reference: | Well Bruce Heath State #119H |
| Company: | Matador Production Company | TVD Reference: | KB @ 3512.5usft |
| Project: | Antelope Ridge | MD Reference: | KB @ 3512.5usft |
| Site: | Bruce Heath | North Reference: | Grid |
| Well: | Bruce Heath State #119H | Survey Calculation Method: | Minimum Curvature |
| Wellbore: | Wellbore #1 | | |
| Design: | State Plan #1 | | |

| Planned Survey | | | | | | | | | | |
|---------------------------------------|-----------------|-------------|-----------------------|--------------|--------------|-------------------------|-------------------------|------------------------|-----------------------|--|
| Measured Depth (usft) | Inclination (°) | Azimuth (°) | Vertical Depth (usft) | +N/-S (usft) | +E/-W (usft) | Vertical Section (usft) | Dogleg Rate (°/100usft) | Build Rate (°/100usft) | Turn Rate (°/100usft) | |
| 4,500.0 | 10.00 | 262.23 | 4,497.5 | -5.9 | -43.1 | -5.5 | 2.00 | 2.00 | 0.00 | |
| 4,600.0 | 12.00 | 262.23 | 4,595.6 | -8.5 | -62.0 | -7.9 | 2.00 | 2.00 | 0.00 | |
| 4,700.0 | 14.00 | 262.23 | 4,693.1 | -11.5 | -84.3 | -10.7 | 2.00 | 2.00 | 0.00 | |
| 4,702.6 | 14.05 | 262.23 | 4,695.5 | -11.6 | -84.9 | -10.8 | 2.00 | 2.00 | 0.00 | |
| Start 3251.4 hold at 4702.6 MD | | | | | | | | | | |
| 4,712.3 | 14.05 | 262.23 | 4,705.0 | -11.9 | -87.3 | -11.1 | 0.00 | 0.00 | 0.00 | |
| Capitan | | | | | | | | | | |
| 4,800.0 | 14.05 | 262.23 | 4,790.1 | -14.8 | -108.4 | -13.8 | 0.00 | 0.00 | 0.00 | |
| 4,900.0 | 14.05 | 262.23 | 4,887.1 | -18.1 | -132.4 | -16.8 | 0.00 | 0.00 | 0.00 | |
| 5,000.0 | 14.05 | 262.23 | 4,984.1 | -21.4 | -156.5 | -19.9 | 0.00 | 0.00 | 0.00 | |
| 5,100.0 | 14.05 | 262.23 | 5,081.1 | -24.6 | -180.5 | -23.0 | 0.00 | 0.00 | 0.00 | |
| 5,200.0 | 14.05 | 262.23 | 5,178.1 | -27.9 | -204.6 | -26.0 | 0.00 | 0.00 | 0.00 | |
| 5,300.0 | 14.05 | 262.23 | 5,275.1 | -31.2 | -228.7 | -29.1 | 0.00 | 0.00 | 0.00 | |
| 5,400.0 | 14.05 | 262.23 | 5,372.1 | -34.5 | -252.7 | -32.1 | 0.00 | 0.00 | 0.00 | |
| 5,474.1 | 14.05 | 262.23 | 5,444.0 | -36.9 | -270.5 | -34.4 | 0.00 | 0.00 | 0.00 | |
| G26: Bell Cyn. | | | | | | | | | | |
| 5,500.0 | 14.05 | 262.23 | 5,469.1 | -37.8 | -276.8 | -35.2 | 0.00 | 0.00 | 0.00 | |
| 5,600.0 | 14.05 | 262.23 | 5,566.1 | -41.0 | -300.8 | -38.3 | 0.00 | 0.00 | 0.00 | |
| 5,700.0 | 14.05 | 262.23 | 5,663.1 | -44.3 | -324.9 | -41.3 | 0.00 | 0.00 | 0.00 | |
| 5,800.0 | 14.05 | 262.23 | 5,760.1 | -47.6 | -348.9 | -44.4 | 0.00 | 0.00 | 0.00 | |
| 5,900.0 | 14.05 | 262.23 | 5,857.2 | -50.9 | -373.0 | -47.4 | 0.00 | 0.00 | 0.00 | |
| 6,000.0 | 14.05 | 262.23 | 5,954.2 | -54.2 | -397.0 | -50.5 | 0.00 | 0.00 | 0.00 | |
| 6,034.9 | 14.05 | 262.23 | 5,988.0 | -55.3 | -405.4 | -51.6 | 0.00 | 0.00 | 0.00 | |
| G13: Cherry Cyn. | | | | | | | | | | |
| 6,100.0 | 14.05 | 262.23 | 6,051.2 | -57.5 | -421.1 | -53.6 | 0.00 | 0.00 | 0.00 | |
| 6,200.0 | 14.05 | 262.23 | 6,148.2 | -60.7 | -445.2 | -56.6 | 0.00 | 0.00 | 0.00 | |
| 6,300.0 | 14.05 | 262.23 | 6,245.2 | -64.0 | -469.2 | -59.7 | 0.00 | 0.00 | 0.00 | |
| 6,400.0 | 14.05 | 262.23 | 6,342.2 | -67.3 | -493.3 | -62.7 | 0.00 | 0.00 | 0.00 | |
| 6,500.0 | 14.05 | 262.23 | 6,439.2 | -70.6 | -517.3 | -65.8 | 0.00 | 0.00 | 0.00 | |
| 6,600.0 | 14.05 | 262.23 | 6,536.2 | -73.9 | -541.4 | -68.9 | 0.00 | 0.00 | 0.00 | |
| 6,700.0 | 14.05 | 262.23 | 6,633.2 | -77.2 | -565.4 | -71.9 | 0.00 | 0.00 | 0.00 | |
| 6,800.0 | 14.05 | 262.23 | 6,730.2 | -80.4 | -589.5 | -75.0 | 0.00 | 0.00 | 0.00 | |
| 6,900.0 | 14.05 | 262.23 | 6,827.2 | -83.7 | -613.5 | -78.0 | 0.00 | 0.00 | 0.00 | |
| 7,000.0 | 14.05 | 262.23 | 6,924.2 | -87.0 | -637.6 | -81.1 | 0.00 | 0.00 | 0.00 | |
| 7,100.0 | 14.05 | 262.23 | 7,021.2 | -90.3 | -661.7 | -84.2 | 0.00 | 0.00 | 0.00 | |
| 7,200.0 | 14.05 | 262.23 | 7,118.3 | -93.6 | -685.7 | -87.2 | 0.00 | 0.00 | 0.00 | |
| 7,300.0 | 14.05 | 262.23 | 7,215.3 | -96.8 | -709.8 | -90.3 | 0.00 | 0.00 | 0.00 | |
| 7,400.0 | 14.05 | 262.23 | 7,312.3 | -100.1 | -733.8 | -93.3 | 0.00 | 0.00 | 0.00 | |
| 7,408.0 | 14.05 | 262.23 | 7,320.0 | -100.4 | -735.7 | -93.6 | 0.00 | 0.00 | 0.00 | |
| G7: Brushy Cyn. | | | | | | | | | | |
| 7,500.0 | 14.05 | 262.23 | 7,409.3 | -103.4 | -757.9 | -96.4 | 0.00 | 0.00 | 0.00 | |
| 7,600.0 | 14.05 | 262.23 | 7,506.3 | -106.7 | -781.9 | -99.5 | 0.00 | 0.00 | 0.00 | |
| 7,700.0 | 14.05 | 262.23 | 7,603.3 | -110.0 | -806.0 | -102.5 | 0.00 | 0.00 | 0.00 | |
| 7,800.0 | 14.05 | 262.23 | 7,700.3 | -113.3 | -830.1 | -105.6 | 0.00 | 0.00 | 0.00 | |
| 7,900.0 | 14.05 | 262.23 | 7,797.3 | -116.5 | -854.1 | -108.6 | 0.00 | 0.00 | 0.00 | |
| 7,953.9 | 14.05 | 262.23 | 7,849.6 | -118.3 | -867.1 | -110.3 | 0.00 | 0.00 | 0.00 | |
| Start Drop -1.50 | | | | | | | | | | |
| 8,000.0 | 13.36 | 262.23 | 7,894.4 | -119.8 | -877.9 | -111.7 | 1.50 | -1.50 | 0.00 | |
| 8,100.0 | 11.86 | 262.23 | 7,992.0 | -122.7 | -899.5 | -114.4 | 1.50 | -1.50 | 0.00 | |
| 8,200.0 | 10.36 | 262.23 | 8,090.1 | -125.3 | -918.6 | -116.8 | 1.50 | -1.50 | 0.00 | |
| 8,300.0 | 8.86 | 262.23 | 8,188.7 | -127.6 | -935.2 | -118.9 | 1.50 | -1.50 | 0.00 | |
| 8,400.0 | 7.36 | 262.23 | 8,287.7 | -129.5 | -949.1 | -120.7 | 1.50 | -1.50 | 0.00 | |
| 8,500.0 | 5.86 | 262.23 | 8,387.0 | -131.1 | -960.5 | -122.2 | 1.50 | -1.50 | 0.00 | |

Planning Report

| | | | |
|------------------|----------------------------|-------------------------------------|------------------------------|
| Database: | EDM 5000.14 Single User Db | Local Co-ordinate Reference: | Well Bruce Heath State #119H |
| Company: | Matador Production Company | TVD Reference: | KB @ 3512.5usft |
| Project: | Antelope Ridge | MD Reference: | KB @ 3512.5usft |
| Site: | Bruce Heath | North Reference: | Grid |
| Well: | Bruce Heath State #119H | Survey Calculation Method: | Minimum Curvature |
| Wellbore: | Wellbore #1 | | |
| Design: | State Plan #1 | | |

| Planned Survey | | | | | | | | | | |
|--|-----------------|-------------|-----------------------|--------------|--------------|-------------------------|-------------------------|------------------------|-----------------------|--|
| Measured Depth (usft) | Inclination (°) | Azimuth (°) | Vertical Depth (usft) | +N/-S (usft) | +E/-W (usft) | Vertical Section (usft) | Dogleg Rate (°/100usft) | Build Rate (°/100usft) | Turn Rate (°/100usft) | |
| 8,578.3 | 4.69 | 262.23 | 8,465.0 | -132.0 | -967.7 | -123.1 | 1.50 | -1.50 | 0.00 | |
| G4: BSG (CS9) | | | | | | | | | | |
| 8,600.0 | 4.36 | 262.23 | 8,486.6 | -132.3 | -969.4 | -123.3 | 1.50 | -1.50 | 0.00 | |
| 8,700.0 | 2.86 | 262.23 | 8,586.4 | -133.1 | -975.6 | -124.1 | 1.50 | -1.50 | 0.00 | |
| 8,800.0 | 1.36 | 262.23 | 8,686.3 | -133.6 | -979.3 | -124.5 | 1.50 | -1.50 | 0.00 | |
| 8,890.7 | 0.00 | 0.00 | 8,777.0 | -133.8 | -980.3 | -124.7 | 1.50 | -1.50 | 0.00 | |
| Start 100.0 hold at 8890.7 MD | | | | | | | | | | |
| 8,900.0 | 0.00 | 0.00 | 8,786.3 | -133.8 | -980.3 | -124.7 | 0.00 | 0.00 | 0.00 | |
| 8,975.7 | 0.00 | 0.00 | 8,862.0 | -133.8 | -980.3 | -124.7 | 0.00 | 0.00 | 0.00 | |
| L6.3: Avalon Carb | | | | | | | | | | |
| 8,990.7 | 0.00 | 0.00 | 8,877.0 | -133.8 | -980.3 | -124.7 | 0.00 | 0.00 | 0.00 | |
| Start Build 10.00 - KOP - Bruce Heath State #119H | | | | | | | | | | |
| 9,000.0 | 0.93 | 359.47 | 8,886.3 | -133.7 | -980.3 | -124.6 | 10.00 | 10.00 | 0.00 | |
| 9,100.0 | 10.93 | 359.47 | 8,985.7 | -123.4 | -980.4 | -114.3 | 10.00 | 10.00 | 0.00 | |
| 9,200.0 | 20.93 | 359.47 | 9,081.7 | -95.9 | -980.7 | -86.9 | 10.00 | 10.00 | 0.00 | |
| 9,231.2 | 24.05 | 359.47 | 9,110.5 | -84.0 | -980.8 | -74.9 | 10.00 | 10.00 | 0.00 | |
| FTP - Bruce Heath State #119H | | | | | | | | | | |
| 9,300.0 | 30.93 | 359.47 | 9,171.5 | -52.3 | -981.1 | -43.2 | 10.00 | 10.00 | 0.00 | |
| 9,400.0 | 40.93 | 359.47 | 9,252.4 | 6.3 | -981.6 | 15.4 | 10.00 | 10.00 | 0.00 | |
| 9,500.0 | 50.93 | 359.47 | 9,321.9 | 78.1 | -982.3 | 87.2 | 10.00 | 10.00 | 0.00 | |
| 9,600.0 | 60.93 | 359.47 | 9,377.8 | 160.8 | -983.0 | 169.9 | 10.00 | 10.00 | 0.00 | |
| 9,700.0 | 70.93 | 359.47 | 9,418.5 | 252.0 | -983.9 | 261.1 | 10.00 | 10.00 | 0.00 | |
| 9,724.4 | 73.37 | 359.47 | 9,426.0 | 275.2 | -984.1 | 284.3 | 10.00 | 10.00 | 0.00 | |
| L5.1: FBSG | | | | | | | | | | |
| 9,800.0 | 80.93 | 359.47 | 9,442.8 | 348.9 | -984.8 | 358.0 | 10.00 | 10.00 | 0.00 | |
| 9,890.7 | 90.00 | 359.47 | 9,450.0 | 439.2 | -985.6 | 448.3 | 10.00 | 10.00 | 0.00 | |
| 9,891.0 | 90.00 | 359.48 | 9,450.0 | 439.5 | -985.6 | 448.6 | 2.00 | -0.17 | 1.99 | |
| Start 3911.9 hold at 9891.0 MD | | | | | | | | | | |
| 9,900.0 | 90.00 | 359.48 | 9,450.0 | 448.5 | -985.7 | 457.6 | 0.00 | 0.00 | 0.00 | |
| 10,000.0 | 90.00 | 359.48 | 9,450.0 | 548.5 | -986.6 | 557.6 | 0.00 | 0.00 | 0.00 | |
| 10,100.0 | 90.00 | 359.48 | 9,450.0 | 648.5 | -987.5 | 657.6 | 0.00 | 0.00 | 0.00 | |
| 10,200.0 | 90.00 | 359.48 | 9,450.0 | 748.5 | -988.4 | 757.6 | 0.00 | 0.00 | 0.00 | |
| 10,300.0 | 90.00 | 359.48 | 9,450.0 | 848.5 | -989.4 | 857.6 | 0.00 | 0.00 | 0.00 | |
| 10,400.0 | 90.00 | 359.48 | 9,450.0 | 948.5 | -990.3 | 957.6 | 0.00 | 0.00 | 0.00 | |
| 10,500.0 | 90.00 | 359.48 | 9,450.0 | 1,048.5 | -991.2 | 1,057.6 | 0.00 | 0.00 | 0.00 | |
| 10,600.0 | 90.00 | 359.48 | 9,450.0 | 1,148.5 | -992.1 | 1,157.6 | 0.00 | 0.00 | 0.00 | |
| 10,700.0 | 90.00 | 359.48 | 9,450.0 | 1,248.5 | -993.0 | 1,257.6 | 0.00 | 0.00 | 0.00 | |
| 10,800.0 | 90.00 | 359.48 | 9,450.0 | 1,348.5 | -993.9 | 1,357.6 | 0.00 | 0.00 | 0.00 | |
| 10,900.0 | 90.00 | 359.48 | 9,450.0 | 1,448.5 | -994.8 | 1,457.6 | 0.00 | 0.00 | 0.00 | |
| 11,000.0 | 90.00 | 359.48 | 9,450.0 | 1,548.5 | -995.7 | 1,557.6 | 0.00 | 0.00 | 0.00 | |
| 11,100.0 | 90.00 | 359.48 | 9,450.0 | 1,648.5 | -996.7 | 1,657.6 | 0.00 | 0.00 | 0.00 | |
| 11,200.0 | 90.00 | 359.48 | 9,450.0 | 1,748.5 | -997.6 | 1,757.6 | 0.00 | 0.00 | 0.00 | |
| 11,300.0 | 90.00 | 359.48 | 9,450.0 | 1,848.4 | -998.5 | 1,857.6 | 0.00 | 0.00 | 0.00 | |
| 11,400.0 | 90.00 | 359.48 | 9,450.0 | 1,948.4 | -999.4 | 1,957.6 | 0.00 | 0.00 | 0.00 | |
| 11,500.0 | 90.00 | 359.48 | 9,450.0 | 2,048.4 | -1,000.3 | 2,057.6 | 0.00 | 0.00 | 0.00 | |
| 11,600.0 | 90.00 | 359.48 | 9,450.0 | 2,148.4 | -1,001.2 | 2,157.6 | 0.00 | 0.00 | 0.00 | |
| 11,700.0 | 90.00 | 359.48 | 9,450.0 | 2,248.4 | -1,002.1 | 2,257.6 | 0.00 | 0.00 | 0.00 | |
| 11,800.0 | 90.00 | 359.48 | 9,450.0 | 2,348.4 | -1,003.0 | 2,357.6 | 0.00 | 0.00 | 0.00 | |
| 11,900.0 | 90.00 | 359.48 | 9,450.0 | 2,448.4 | -1,004.0 | 2,457.6 | 0.00 | 0.00 | 0.00 | |
| 12,000.0 | 90.00 | 359.48 | 9,450.0 | 2,548.4 | -1,004.9 | 2,557.6 | 0.00 | 0.00 | 0.00 | |
| 12,100.0 | 90.00 | 359.48 | 9,450.0 | 2,648.4 | -1,005.8 | 2,657.6 | 0.00 | 0.00 | 0.00 | |
| 12,200.0 | 90.00 | 359.48 | 9,450.0 | 2,748.4 | -1,006.7 | 2,757.6 | 0.00 | 0.00 | 0.00 | |
| 12,300.0 | 90.00 | 359.48 | 9,450.0 | 2,848.4 | -1,007.6 | 2,857.6 | 0.00 | 0.00 | 0.00 | |

Planning Report

| | | | |
|------------------|----------------------------|-------------------------------------|------------------------------|
| Database: | EDM 5000.14 Single User Db | Local Co-ordinate Reference: | Well Bruce Heath State #119H |
| Company: | Matador Production Company | TVD Reference: | KB @ 3512.5usft |
| Project: | Antelope Ridge | MD Reference: | KB @ 3512.5usft |
| Site: | Bruce Heath | North Reference: | Grid |
| Well: | Bruce Heath State #119H | Survey Calculation Method: | Minimum Curvature |
| Wellbore: | Wellbore #1 | | |
| Design: | State Plan #1 | | |

| Planned Survey | | | | | | | | | | |
|---|-----------------|-------------|-----------------------|--------------|--------------|-------------------------|-------------------------|------------------------|-----------------------|--|
| Measured Depth (usft) | Inclination (°) | Azimuth (°) | Vertical Depth (usft) | +N/-S (usft) | +E/-W (usft) | Vertical Section (usft) | Dogleg Rate (°/100usft) | Build Rate (°/100usft) | Turn Rate (°/100usft) | |
| 12,400.0 | 90.00 | 359.48 | 9,450.0 | 2,948.4 | -1,008.5 | 2,957.6 | 0.00 | 0.00 | 0.00 | |
| 12,500.0 | 90.00 | 359.48 | 9,450.0 | 3,048.4 | -1,009.4 | 3,057.6 | 0.00 | 0.00 | 0.00 | |
| 12,600.0 | 90.00 | 359.48 | 9,450.0 | 3,148.4 | -1,010.3 | 3,157.6 | 0.00 | 0.00 | 0.00 | |
| 12,700.0 | 90.00 | 359.48 | 9,450.0 | 3,248.4 | -1,011.3 | 3,257.6 | 0.00 | 0.00 | 0.00 | |
| 12,800.0 | 90.00 | 359.48 | 9,450.0 | 3,348.4 | -1,012.2 | 3,357.6 | 0.00 | 0.00 | 0.00 | |
| 12,900.0 | 90.00 | 359.48 | 9,450.0 | 3,448.4 | -1,013.1 | 3,457.6 | 0.00 | 0.00 | 0.00 | |
| 13,000.0 | 90.00 | 359.48 | 9,450.0 | 3,548.4 | -1,014.0 | 3,557.6 | 0.00 | 0.00 | 0.00 | |
| 13,100.0 | 90.00 | 359.48 | 9,450.0 | 3,648.4 | -1,014.9 | 3,657.6 | 0.00 | 0.00 | 0.00 | |
| 13,200.0 | 90.00 | 359.48 | 9,450.0 | 3,748.4 | -1,015.8 | 3,757.6 | 0.00 | 0.00 | 0.00 | |
| 13,300.0 | 90.00 | 359.48 | 9,450.0 | 3,848.4 | -1,016.7 | 3,857.6 | 0.00 | 0.00 | 0.00 | |
| 13,400.0 | 90.00 | 359.48 | 9,450.0 | 3,948.4 | -1,017.6 | 3,957.6 | 0.00 | 0.00 | 0.00 | |
| 13,500.0 | 90.00 | 359.48 | 9,450.0 | 4,048.4 | -1,018.6 | 4,057.6 | 0.00 | 0.00 | 0.00 | |
| 13,600.0 | 90.00 | 359.48 | 9,450.0 | 4,148.4 | -1,019.5 | 4,157.6 | 0.00 | 0.00 | 0.00 | |
| 13,700.0 | 90.00 | 359.48 | 9,450.0 | 4,248.3 | -1,020.4 | 4,257.6 | 0.00 | 0.00 | 0.00 | |
| 13,800.0 | 90.00 | 359.48 | 9,450.0 | 4,348.3 | -1,021.3 | 4,357.6 | 0.00 | 0.00 | 0.00 | |
| 13,802.9 | 90.00 | 359.48 | 9,450.0 | 4,351.2 | -1,021.3 | 4,360.5 | 0.00 | 0.00 | 0.00 | |
| Start DLS 8.69 TFO -90.00 - DP1 - Bruce Heath State #119H | | | | | | | | | | |
| 13,900.0 | 90.00 | 351.04 | 9,450.0 | 4,447.9 | -1,029.3 | 4,457.3 | 8.69 | 0.00 | -8.69 | |
| 14,000.0 | 90.00 | 342.34 | 9,450.0 | 4,545.1 | -1,052.3 | 4,554.7 | 8.69 | 0.00 | -8.69 | |
| 14,100.0 | 90.00 | 333.65 | 9,450.0 | 4,637.8 | -1,089.8 | 4,647.7 | 8.69 | 0.00 | -8.69 | |
| 14,200.0 | 90.00 | 324.95 | 9,450.0 | 4,723.7 | -1,140.8 | 4,734.0 | 8.69 | 0.00 | -8.69 | |
| 14,300.0 | 90.00 | 316.26 | 9,450.0 | 4,800.9 | -1,204.2 | 4,811.8 | 8.69 | 0.00 | -8.69 | |
| 14,379.7 | 90.00 | 309.33 | 9,450.0 | 4,855.0 | -1,262.6 | 4,866.5 | 8.69 | 0.00 | -8.69 | |
| NPZ1 - Bruce Heath State #119H | | | | | | | | | | |
| 14,400.0 | 90.00 | 307.57 | 9,450.0 | 4,867.6 | -1,278.5 | 4,879.2 | 8.69 | 0.00 | -8.69 | |
| 14,500.0 | 90.00 | 298.87 | 9,450.0 | 4,922.4 | -1,362.1 | 4,934.7 | 8.69 | 0.00 | -8.69 | |
| 14,600.0 | 90.00 | 290.18 | 9,450.0 | 4,963.8 | -1,453.0 | 4,977.1 | 8.69 | 0.00 | -8.69 | |
| 14,700.0 | 90.00 | 281.49 | 9,450.0 | 4,991.1 | -1,549.1 | 5,005.2 | 8.69 | 0.00 | -8.69 | |
| 14,800.0 | 90.00 | 272.79 | 9,450.0 | 5,003.5 | -1,648.2 | 5,018.5 | 8.69 | 0.00 | -8.69 | |
| 14,839.1 | 90.00 | 269.39 | 9,450.0 | 5,004.2 | -1,687.3 | 5,019.6 | 8.69 | 0.00 | -8.69 | |
| Start DLS 8.67 TFO -90.00 - APEX - Bruce Heath State #119H | | | | | | | | | | |
| 14,900.0 | 90.00 | 264.11 | 9,450.0 | 5,000.8 | -1,748.1 | 5,016.7 | 8.67 | 0.00 | -8.67 | |
| 15,000.0 | 90.00 | 255.45 | 9,450.0 | 4,983.1 | -1,846.4 | 4,999.9 | 8.67 | 0.00 | -8.67 | |
| 15,100.0 | 90.00 | 246.78 | 9,450.0 | 4,950.7 | -1,940.9 | 4,968.5 | 8.67 | 0.00 | -8.67 | |
| 15,200.0 | 90.00 | 238.11 | 9,450.0 | 4,904.5 | -2,029.5 | 4,923.1 | 8.67 | 0.00 | -8.67 | |
| 15,297.7 | 90.00 | 229.65 | 9,450.0 | 4,847.0 | -2,108.3 | 4,866.3 | 8.67 | 0.00 | -8.67 | |
| NPZ2 - Bruce Heath State #119H | | | | | | | | | | |
| 15,300.0 | 90.00 | 229.44 | 9,450.0 | 4,845.5 | -2,110.1 | 4,864.8 | 8.67 | 0.00 | -8.67 | |
| 15,400.0 | 90.00 | 220.78 | 9,450.0 | 4,775.0 | -2,180.9 | 4,794.9 | 8.67 | 0.00 | -8.67 | |
| 15,500.0 | 90.00 | 212.11 | 9,450.0 | 4,694.6 | -2,240.2 | 4,715.1 | 8.67 | 0.00 | -8.67 | |
| 15,600.0 | 90.00 | 203.44 | 9,450.0 | 4,606.2 | -2,286.8 | 4,627.2 | 8.67 | 0.00 | -8.67 | |
| 15,700.0 | 90.00 | 194.77 | 9,450.0 | 4,511.8 | -2,319.5 | 4,533.1 | 8.67 | 0.00 | -8.67 | |
| 15,800.0 | 90.00 | 186.10 | 9,450.0 | 4,413.5 | -2,337.6 | 4,435.0 | 8.67 | 0.00 | -8.67 | |
| 15,875.4 | 90.00 | 179.56 | 9,450.0 | 4,338.2 | -2,341.3 | 4,359.7 | 8.67 | 0.00 | -8.67 | |
| Start DLS 2.00 TFO -89.57 - DP2 - Bruce Heath State #119H | | | | | | | | | | |
| 15,879.6 | 90.00 | 179.48 | 9,450.0 | 4,334.1 | -2,341.3 | 4,355.6 | 2.00 | 0.01 | -2.00 | |
| Start 4420.0 hold at 15879.6 MD | | | | | | | | | | |
| 15,900.0 | 90.00 | 179.48 | 9,450.0 | 4,313.7 | -2,341.1 | 4,335.2 | 0.00 | 0.00 | 0.00 | |
| 16,000.0 | 90.00 | 179.48 | 9,450.0 | 4,213.7 | -2,340.2 | 4,235.2 | 0.00 | 0.00 | 0.00 | |
| 16,100.0 | 90.00 | 179.48 | 9,450.0 | 4,113.7 | -2,339.3 | 4,135.2 | 0.00 | 0.00 | 0.00 | |
| 16,200.0 | 90.00 | 179.48 | 9,450.0 | 4,013.7 | -2,338.4 | 4,035.2 | 0.00 | 0.00 | 0.00 | |
| 16,300.0 | 90.00 | 179.48 | 9,450.0 | 3,913.7 | -2,337.5 | 3,935.2 | 0.00 | 0.00 | 0.00 | |
| 16,400.0 | 90.00 | 179.48 | 9,450.0 | 3,813.7 | -2,336.6 | 3,835.2 | 0.00 | 0.00 | 0.00 | |

Planning Report

| | | | |
|------------------|----------------------------|-------------------------------------|------------------------------|
| Database: | EDM 5000.14 Single User Db | Local Co-ordinate Reference: | Well Bruce Heath State #119H |
| Company: | Matador Production Company | TVD Reference: | KB @ 3512.5usft |
| Project: | Antelope Ridge | MD Reference: | KB @ 3512.5usft |
| Site: | Bruce Heath | North Reference: | Grid |
| Well: | Bruce Heath State #119H | Survey Calculation Method: | Minimum Curvature |
| Wellbore: | Wellbore #1 | | |
| Design: | State Plan #1 | | |

| Planned Survey | | | | | | | | | | |
|--|-----------------|-------------|-----------------------|--------------|--------------|-------------------------|-------------------------|------------------------|-----------------------|--|
| Measured Depth (usft) | Inclination (°) | Azimuth (°) | Vertical Depth (usft) | +N/-S (usft) | +E/-W (usft) | Vertical Section (usft) | Dogleg Rate (°/100usft) | Build Rate (°/100usft) | Turn Rate (°/100usft) | |
| 16,500.0 | 90.00 | 179.48 | 9,450.0 | 3,713.7 | -2,335.7 | 3,735.2 | 0.00 | 0.00 | 0.00 | |
| 16,600.0 | 90.00 | 179.48 | 9,450.0 | 3,613.7 | -2,334.8 | 3,635.2 | 0.00 | 0.00 | 0.00 | |
| 16,700.0 | 90.00 | 179.48 | 9,450.0 | 3,513.7 | -2,333.9 | 3,535.2 | 0.00 | 0.00 | 0.00 | |
| 16,800.0 | 90.00 | 179.48 | 9,450.0 | 3,413.7 | -2,333.0 | 3,435.2 | 0.00 | 0.00 | 0.00 | |
| 16,900.0 | 90.00 | 179.48 | 9,450.0 | 3,313.7 | -2,332.1 | 3,335.2 | 0.00 | 0.00 | 0.00 | |
| 17,000.0 | 90.00 | 179.48 | 9,450.0 | 3,213.7 | -2,331.2 | 3,235.2 | 0.00 | 0.00 | 0.00 | |
| 17,100.0 | 90.00 | 179.48 | 9,450.0 | 3,113.7 | -2,330.2 | 3,135.2 | 0.00 | 0.00 | 0.00 | |
| 17,200.0 | 90.00 | 179.48 | 9,450.0 | 3,013.7 | -2,329.3 | 3,035.2 | 0.00 | 0.00 | 0.00 | |
| 17,300.0 | 90.00 | 179.48 | 9,450.0 | 2,913.7 | -2,328.4 | 2,935.2 | 0.00 | 0.00 | 0.00 | |
| 17,400.0 | 90.00 | 179.48 | 9,450.0 | 2,813.7 | -2,327.5 | 2,835.2 | 0.00 | 0.00 | 0.00 | |
| 17,500.0 | 90.00 | 179.48 | 9,450.0 | 2,713.7 | -2,326.6 | 2,735.2 | 0.00 | 0.00 | 0.00 | |
| 17,600.0 | 90.00 | 179.48 | 9,450.0 | 2,613.8 | -2,325.7 | 2,635.2 | 0.00 | 0.00 | 0.00 | |
| 17,700.0 | 90.00 | 179.48 | 9,450.0 | 2,513.8 | -2,324.8 | 2,535.2 | 0.00 | 0.00 | 0.00 | |
| 17,800.0 | 90.00 | 179.48 | 9,450.0 | 2,413.8 | -2,323.9 | 2,435.2 | 0.00 | 0.00 | 0.00 | |
| 17,900.0 | 90.00 | 179.48 | 9,450.0 | 2,313.8 | -2,323.0 | 2,335.2 | 0.00 | 0.00 | 0.00 | |
| 18,000.0 | 90.00 | 179.48 | 9,450.0 | 2,213.8 | -2,322.1 | 2,235.2 | 0.00 | 0.00 | 0.00 | |
| 18,100.0 | 90.00 | 179.48 | 9,450.0 | 2,113.8 | -2,321.2 | 2,135.2 | 0.00 | 0.00 | 0.00 | |
| 18,200.0 | 90.00 | 179.48 | 9,450.0 | 2,013.8 | -2,320.3 | 2,035.2 | 0.00 | 0.00 | 0.00 | |
| 18,300.0 | 90.00 | 179.48 | 9,450.0 | 1,913.8 | -2,319.4 | 1,935.2 | 0.00 | 0.00 | 0.00 | |
| 18,400.0 | 90.00 | 179.48 | 9,450.0 | 1,813.8 | -2,318.5 | 1,835.2 | 0.00 | 0.00 | 0.00 | |
| 18,500.0 | 90.00 | 179.48 | 9,450.0 | 1,713.8 | -2,317.6 | 1,735.2 | 0.00 | 0.00 | 0.00 | |
| 18,600.0 | 90.00 | 179.48 | 9,450.0 | 1,613.8 | -2,316.7 | 1,635.2 | 0.00 | 0.00 | 0.00 | |
| 18,700.0 | 90.00 | 179.48 | 9,450.0 | 1,513.8 | -2,315.8 | 1,535.2 | 0.00 | 0.00 | 0.00 | |
| 18,800.0 | 90.00 | 179.48 | 9,450.0 | 1,413.8 | -2,314.9 | 1,435.2 | 0.00 | 0.00 | 0.00 | |
| 18,900.0 | 90.00 | 179.48 | 9,450.0 | 1,313.8 | -2,314.0 | 1,335.2 | 0.00 | 0.00 | 0.00 | |
| 19,000.0 | 90.00 | 179.48 | 9,450.0 | 1,213.8 | -2,313.1 | 1,235.2 | 0.00 | 0.00 | 0.00 | |
| 19,100.0 | 90.00 | 179.48 | 9,450.0 | 1,113.8 | -2,312.2 | 1,135.2 | 0.00 | 0.00 | 0.00 | |
| 19,200.0 | 90.00 | 179.48 | 9,450.0 | 1,013.8 | -2,311.3 | 1,035.2 | 0.00 | 0.00 | 0.00 | |
| 19,300.0 | 90.00 | 179.48 | 9,450.0 | 913.8 | -2,310.4 | 935.2 | 0.00 | 0.00 | 0.00 | |
| 19,400.0 | 90.00 | 179.48 | 9,450.0 | 813.8 | -2,309.5 | 835.2 | 0.00 | 0.00 | 0.00 | |
| 19,500.0 | 90.00 | 179.48 | 9,450.0 | 713.8 | -2,308.5 | 735.2 | 0.00 | 0.00 | 0.00 | |
| 19,600.0 | 90.00 | 179.48 | 9,450.0 | 613.8 | -2,307.6 | 635.2 | 0.00 | 0.00 | 0.00 | |
| 19,700.0 | 90.00 | 179.48 | 9,450.0 | 513.8 | -2,306.7 | 535.2 | 0.00 | 0.00 | 0.00 | |
| 19,800.0 | 90.00 | 179.48 | 9,450.0 | 413.8 | -2,305.8 | 435.2 | 0.00 | 0.00 | 0.00 | |
| 19,900.0 | 90.00 | 179.48 | 9,450.0 | 313.8 | -2,304.9 | 335.2 | 0.00 | 0.00 | 0.00 | |
| 20,000.0 | 90.00 | 179.48 | 9,450.0 | 213.8 | -2,304.0 | 235.2 | 0.00 | 0.00 | 0.00 | |
| 20,100.0 | 90.00 | 179.48 | 9,450.0 | 113.9 | -2,303.1 | 135.2 | 0.00 | 0.00 | 0.00 | |
| 20,200.0 | 90.00 | 179.48 | 9,450.0 | 13.9 | -2,302.2 | 35.2 | 0.00 | 0.00 | 0.00 | |
| 20,299.6 | 90.00 | 179.48 | 9,450.0 | -85.8 | -2,301.3 | -64.5 | 0.00 | 0.00 | 0.00 | |
| TD at 20299.6 - BHL - Bruce Heath State #119H | | | | | | | | | | |

Planning Report

| | | | |
|------------------|----------------------------|-------------------------------------|------------------------------|
| Database: | EDM 5000.14 Single User Db | Local Co-ordinate Reference: | Well Bruce Heath State #119H |
| Company: | Matador Production Company | TVD Reference: | KB @ 3512.5usft |
| Project: | Antelope Ridge | MD Reference: | KB @ 3512.5usft |
| Site: | Bruce Heath | North Reference: | Grid |
| Well: | Bruce Heath State #119H | Survey Calculation Method: | Minimum Curvature |
| Wellbore: | Wellbore #1 | | |
| Design: | State Plan #1 | | |

| Design Targets | | | | | | | | | |
|---|------------------|-----------------|---------------|-----------------|-----------------|--------------------|-------------------|------------------|-------------------|
| Target Name - hit/miss target - Shape | Dip Angle (°) | Dip Dir. (°) | TVD (usft) | +N/-S (usft) | +E/-W (usft) | Northing (usft) | Easting (usft) | Latitude | Longitude |
| KOP - Bruce Heath St - plan hits target center - Point | 0.00 | 0.00 | 8,877.0 | -133.8 | -980.3 | 457,511.00 | 809,383.00 | 32° 15' 13.862 N | 103° 19' 57.222 W |
| FTP - Bruce Heath St: - plan hits target center - Point | 0.00 | 0.00 | 9,110.5 | -84.0 | -980.8 | 457,560.76 | 809,382.54 | 32° 15' 14.354 N | 103° 19' 57.222 W |
| BHL - Bruce Heath St: - plan hits target center - Point | 0.00 | 0.00 | 9,450.0 | -85.8 | -2,301.3 | 457,559.00 | 808,062.00 | 32° 15' 14.458 N | 103° 20' 12.598 W |
| DP1 - Bruce Heath St - plan hits target center - Point | 0.00 | 0.00 | 9,450.0 | 4,351.2 | -1,021.3 | 461,996.00 | 809,342.00 | 32° 15' 58.244 N | 103° 19' 57.212 W |
| APEX - Bruce Heath § - plan hits target center - Point | 0.00 | 0.00 | 9,450.0 | 5,004.2 | -1,687.3 | 462,649.00 | 808,676.00 | 32° 16' 4.767 N | 103° 20' 4.897 W |
| NPZ1 - Bruce Heath § - plan hits target center - Point | 0.00 | 0.00 | 9,450.0 | 4,855.0 | -1,262.6 | 462,499.76 | 809,100.68 | 32° 16' 3.251 N | 103° 19' 59.968 W |
| DP2 - Bruce Heath St - plan hits target center - Point | 0.00 | 0.00 | 9,450.0 | 4,338.2 | -2,341.3 | 461,983.00 | 808,022.00 | 32° 15' 58.237 N | 103° 20' 12.585 W |
| NPZ2 - Bruce Heath § - plan hits target center - Point | 0.00 | 0.00 | 9,450.0 | 4,847.0 | -2,108.3 | 462,491.76 | 808,254.99 | 32° 16' 3.249 N | 103° 20' 9.817 W |

| Formations | | | | | | |
|--------------------------|--------------------------|-------------------|-----------|------------|----------------------|--|
| Measured Depth (usft) | Vertical Depth (usft) | Name | Lithology | Dip (°) | Dip Direction (°) | |
| 1,912.0 | 1,912.0 | Rustler | | | | |
| 2,282.0 | 2,282.0 | Salado | | | | |
| 3,956.0 | 3,956.0 | Base Salt/Tansill | | | | |
| 4,265.4 | 4,265.0 | Yates | | | | |
| 4,712.3 | 4,705.0 | Capitan | | | | |
| 5,474.1 | 5,444.0 | G26: Bell Cyn. | | | | |
| 6,034.9 | 5,988.0 | G13: Cherry Cyn. | | | | |
| 7,408.0 | 7,320.0 | G7: Brushy Cyn. | | | | |
| 8,578.3 | 8,465.0 | G4: BSGL (CS9) | | | | |
| 8,975.7 | 8,862.0 | L6.3: Avalon Carb | | | | |
| 9,724.4 | 9,426.0 | L5.1: FBSG | | | | |

Planning Report

| | | | |
|------------------|----------------------------|-------------------------------------|------------------------------|
| Database: | EDM 5000.14 Single User Db | Local Co-ordinate Reference: | Well Bruce Heath State #119H |
| Company: | Matador Production Company | TVD Reference: | KB @ 3512.5usft |
| Project: | Antelope Ridge | MD Reference: | KB @ 3512.5usft |
| Site: | Bruce Heath | North Reference: | Grid |
| Well: | Bruce Heath State #119H | Survey Calculation Method: | Minimum Curvature |
| Wellbore: | Wellbore #1 | | |
| Design: | State Plan #1 | | |

| Plan Annotations | | | | | |
|-----------------------|-----------------------|-------------------|--------------|---------------------------------|--|
| Measured Depth (usft) | Vertical Depth (usft) | Local Coordinates | | Comment | |
| | | +N/-S (usft) | +E/-W (usft) | | |
| 4,000.0 | 4,000.0 | 0.0 | 0.0 | Start Build 2.00 | |
| 4,702.6 | 4,695.5 | -11.6 | -84.9 | Start 3251.4 hold at 4702.6 MD | |
| 7,953.9 | 7,849.6 | -118.3 | -867.1 | Start Drop -1.50 | |
| 8,890.7 | 8,777.0 | -133.8 | -980.3 | Start 100.0 hold at 8890.7 MD | |
| 8,990.7 | 8,877.0 | -133.8 | -980.3 | Start Build 10.00 | |
| 9,891.0 | 9,450.0 | 439.5 | -985.6 | Start 3911.9 hold at 9891.0 MD | |
| 13,802.9 | 9,450.0 | 4,351.2 | -1,021.3 | Start DLS 8.69 TFO -90.00 | |
| 14,839.1 | 9,450.0 | 5,004.2 | -1,687.3 | Start DLS 8.67 TFO -90.00 | |
| 15,875.4 | 9,450.0 | 4,338.2 | -2,341.3 | Start DLS 2.00 TFO -89.57 | |
| 15,879.6 | 9,450.0 | 4,334.1 | -2,341.3 | Start 4420.0 hold at 15879.6 MD | |
| 20,299.6 | 9,450.0 | -85.8 | -2,301.3 | TD at 20299.6 | |

Well Name: Bruce Heath State #119H

| STRING | FLUID TYPE | HOLE SZ | CSG SZ | CSG GRADE | CSG WT | DEPTH SET | TOP CSG | TTL SX CEMENT | EST TOC | ADDITIONAL INFO FOR CSG/CMT PROGRAM (Optional) |
|--------|---------------|-----------|--------|-----------|--------|-----------|---------|---------------|---------|--|
| SURF | FRESH WTR | 17.5 | 13.375 | J-55 | 54.50 | 1947 | 0 | 1229 | 0 | Option to drill surface hole with surface setting rig. Option to cement surface casing offline |
| INT 1 | Brine | 12.25 | 9.625 | J-55 | 40.00 | 5688 | 0 | 1621 | 0 | Option to run DV tool and Packer. |
| PROD | OBM/Cut Brine | 8.75/6.75 | 5.5 | P-110 | 20.00 | 20299 | 0 | 2047 | 1924 | Option to drill 7.875" production hole. |

State of New Mexico
 Energy, Minerals and Natural Resources Department

Submit Electronically
 Via E-permitting

Oil Conservation Division
 1220 South St. Francis Dr.
 Santa Fe, NM 87505

NATURAL GAS MANAGEMENT PLAN

This Natural Gas Management Plan must be submitted with each Application for Permit to Drill (APD) for a new or recompleted well.

Section 1 – Plan Description
Effective May 25, 2021

I. Operator: Matador Production Company **OGRID:** 228937 **Date:** 02/04/2026

II. Type: Original Amendment due to 19.15.27.9.D(6)(a) NMAC 19.15.27.9.D(6)(b) NMAC Other.

If Other, please describe: _____

III. Well(s): Provide the following information for each new or recompleted well or set of wells proposed to be drilled or proposed to be recompleted from a single well pad or connected to a central delivery point.

| Well Name | API | ULSTR | Footages | Anticipated Oil BBL/D | Anticipated Gas MCF/D | Anticipated Produced Water BBL/D |
|------------------------|-----|--------------|--------------------|-----------------------|-----------------------|----------------------------------|
| Bruce Heath State 119H | TBD | P-35-23S-35E | 175' FSL & 10' FEL | 800 | 1,700 | 2,200 |
| BJ Frazier State 200H | TBD | M-36-23S-35E | 175' FSL & 20' FWL | 800 | 1,700 | 2,200 |

IV. Central Delivery Point Name: Bruce Heath TB [See 19.15.27.9(D)(1) NMAC]

V. Anticipated Schedule: Provide the following information for each new or recompleted well or set of wells proposed to be drilled or proposed to be recompleted from a single well pad or connected to a central delivery point.

| Well Name | API | Spud Date | TD Reached Date | Completion Commencement Date | Initial Flow Back Date | First Production Date |
|------------------------|-----|------------|-----------------|------------------------------|------------------------|-----------------------|
| Bruce Heath State 119H | TBD | 07/14/2026 | 08/15/2026 | 08/25/2026 | 09/26/2026 | 09/26/2026 |
| BJ Frazier State 200H | TBD | 06/12/2026 | 07/15/2026 | 08/25/2026 | 09/26/2026 | 09/26/2026 |

VI. Separation Equipment: Attach a complete description of how Operator will size separation equipment to optimize gas capture.

VII. Operational Practices: Attach a complete description of the actions Operator will take to comply with the requirements of Subsection A through F of 19.15.27.8 NMAC.

VIII. Best Management Practices: Attach a complete description of Operator's best management practices to minimize venting during active and planned maintenance.

Section 2 – Enhanced Plan

EFFECTIVE APRIL 1, 2022

Beginning April 1, 2022, an operator that is not in compliance with its statewide natural gas capture requirement for the applicable reporting area must complete this section.

Operator certifies that it is not required to complete this section because Operator is in compliance with its statewide natural gas capture requirement for the applicable reporting area.

IX. Anticipated Natural Gas Production:

| Well | API | Anticipated Average Natural Gas Rate MCF/D | Anticipated Volume of Natural Gas for the First Year MCF |
|------|-----|--|--|
| | | | |
| | | | |

X. Natural Gas Gathering System (NGGS):

| Operator | System | ULSTR of Tie-in | Anticipated Gathering Start Date | Available Maximum Daily Capacity of System Segment Tie-in |
|----------|--------|-----------------|----------------------------------|---|
| | | | | |
| | | | | |

XI. Map. Attach an accurate and legible map depicting the location of the well(s), the anticipated pipeline route(s) connecting the production operations to the existing or planned interconnect of the natural gas gathering system(s), and the maximum daily capacity of the segment or portion of the natural gas gathering system(s) to which the well(s) will be connected.

XII. Line Capacity. The natural gas gathering system will will not have capacity to gather 100% of the anticipated natural gas production volume from the well prior to the date of first production.

XIII. Line Pressure. Operator does does not anticipate that its existing well(s) connected to the same segment, or portion, of the natural gas gathering system(s) described above will continue to meet anticipated increases in line pressure caused by the new well(s).

Attach Operator’s plan to manage production in response to the increased line pressure.

XIV. Confidentiality: Operator asserts confidentiality pursuant to Section 71-2-8 NMSA 1978 for the information provided in Section 2 as provided in Paragraph (2) of Subsection D of 19.15.27.9 NMAC, and attaches a full description of the specific information for which confidentiality is asserted and the basis for such assertion.

Section 3 - Certifications**Effective May 25, 2021**

Operator certifies that, after reasonable inquiry and based on the available information at the time of submittal:

Operator will be able to connect the well(s) to a natural gas gathering system in the general area with sufficient capacity to transport one hundred percent of the anticipated volume of natural gas produced from the well(s) commencing on the date of first production, taking into account the current and anticipated volumes of produced natural gas from other wells connected to the pipeline gathering system; or

Operator will not be able to connect to a natural gas gathering system in the general area with sufficient capacity to transport one hundred percent of the anticipated volume of natural gas produced from the well(s) commencing on the date of first production, taking into account the current and anticipated volumes of produced natural gas from other wells connected to the pipeline gathering system.

If Operator checks this box, Operator will select one of the following:

Well Shut-In. Operator will shut-in and not produce the well until it submits the certification required by Paragraph (4) of Subsection D of 19.15.27.9 NMAC; or

Venting and Flaring Plan. Operator has attached a venting and flaring plan that evaluates and selects one or more of the potential alternative beneficial uses for the natural gas until a natural gas gathering system is available, including:

- (a) power generation on lease;
- (b) power generation for grid;
- (c) compression on lease;
- (d) liquids removal on lease;
- (e) reinjection for underground storage;
- (f) reinjection for temporary storage;
- (g) reinjection for enhanced oil recovery;
- (h) fuel cell production; and
- (i) other alternative beneficial uses approved by the division.

Section 4 - Notices


1. If, at any time after Operator submits this Natural Gas Management Plan and before the well is spud:

(a) Operator becomes aware that the natural gas gathering system it planned to connect the well(s) to has become unavailable or will not have capacity to transport one hundred percent of the production from the well(s), no later than 20 days after becoming aware of such information, Operator shall submit for OCD's approval a new or revised venting and flaring plan containing the information specified in Paragraph (5) of Subsection D of 19.15.27.9 NMAC; or

(b) Operator becomes aware that it has, cumulatively for the year, become out of compliance with its baseline natural gas capture rate or natural gas capture requirement, no later than 20 days after becoming aware of such information, Operator shall submit for OCD's approval a new or revised Natural Gas Management Plan for each well it plans to spud during the next 90 days containing the information specified in Paragraph (2) of Subsection D of 19.15.27.9 NMAC, and shall file an update for each Natural Gas Management Plan until Operator is back in compliance with its baseline natural gas capture rate or natural gas capture requirement.

2. OCD may deny or conditionally approve an APD if Operator does not make a certification, fails to submit an adequate venting and flaring plan which includes alternative beneficial uses for the anticipated volume of natural gas produced, or if OCD determines that Operator will not have adequate natural gas takeaway capacity at the time a well will be spud.

I certify that, after reasonable inquiry, the statements in and attached to this Natural Gas Management Plan are true and correct to the best of my knowledge and acknowledge that a false statement may be subject to civil and criminal penalties under the Oil and Gas Act.

| |
|--|
| Signature:  |
| Printed Name: Oscar Gonzalez |
| Title: Facilities Engineer |
| E-mail Address: ogonzalez@matadorresources.com |
| Date: 02/04/2026 |
| Phone: 972 – 629 – 2147 |
| OIL CONSERVATION DIVISION (Only applicable when submitted as a standalone form) |
| Approved By: |
| Title: |
| Approval Date: |
| Conditions of Approval: |

BONE SPRING – 2.00 Mile Lateral Length

