

Santa Fe Main Office  
Phone: (505) 476-3441  
General Information  
Phone: (505) 629-6116

State of New Mexico  
Energy, Minerals and Natural Resources

Online Phone Directory Visit:  
<https://www.emnrd.nm.gov/ocd/contact-us/>

OIL CONSERVATION DIVISION  
1220 South St. Francis Dr.  
Santa Fe, NM 87505

SUNDRY NOTICES AND REPORTS ON WELLS (DO NOT USE THIS FORM FOR PROPOSALS TO DRILL OR TO DEEPEN OR PLUG BACK TO A DIFFERENT RESERVOIR. USE "APPLICATION FOR PERMIT" (FORM C-101) FOR SUCH PROPOSALS.)		WELL API NO. <b>30-015-56748</b>
1. Type of Well: Oil Well <input checked="" type="checkbox"/> Gas Well <input type="checkbox"/> Other <input type="checkbox"/>		5. Indicate Type of Lease STATE <input type="checkbox"/> FEE <input type="checkbox"/>
2. Name of Operator <b>XTO PERMIAN OPERATING, LLC.</b>		6. State Oil & Gas Lease No. <b>NMNM05912</b>
3. Address of Operator <b>3617 North Big Spring Street, Midland, TX 78705</b>		7. Lease Name or Unit Agreement Name <b>POKER LAKE UNIT 13 24 PC</b>
4. Well Location Unit Letter <b>G</b> : <b>2420</b> feet from the <b>NORTH</b> line and <b>1566</b> feet from the <b>EAST</b> line Section <b>13</b> Township <b>24S</b> Range <b>29E</b> NMPM <b>EDDY</b> County		8. Well Number <b>705H</b>
		9. OGRID Number <b>373075</b>
		10. Pool name or Wildcat <b>PIERCE CROSSING; BONE SPRING, EAST</b>
		11. Elevation (Show whether DR, RKB, RT, GR, etc.) <b>GL 3113'</b>

12. Check Appropriate Box to Indicate Nature of Notice, Report or Other Data

<b>NOTICE OF INTENTION TO:</b> PERFORM REMEDIAL WORK <input type="checkbox"/> PLUG AND ABANDON <input type="checkbox"/> TEMPORARILY ABANDON <input type="checkbox"/> CHANGE PLANS <input type="checkbox"/> PULL OR ALTER CASING <input type="checkbox"/> MULTIPLE COMPL <input type="checkbox"/> DOWNHOLE COMMINGLE <input type="checkbox"/> CLOSED-LOOP SYSTEM <input type="checkbox"/> OTHER: <input checked="" type="checkbox"/>		<b>SUBSEQUENT REPORT OF:</b> REMEDIAL WORK <input type="checkbox"/> ALTERING CASING <input type="checkbox"/> COMMENCE DRILLING OPNS. <input type="checkbox"/> P AND A <input type="checkbox"/> CASING/CEMENT JOB <input type="checkbox"/> OTHER: <input type="checkbox"/>	
---	--	---	--

13. Describe proposed or completed operations. (Clearly state all pertinent details, and give pertinent dates, including estimated date of starting any proposed work). SEE RULE 19.15.7.14 NMAC. For Multiple Completions: Attach wellbore diagram of proposed completion or recompletion.

XTO Permian Operating, LLC. respectfully requests that the Division accept the attached C-102s as a clean copy for its records. No changes are being proposed from the version currently on file with the BLM.

Spud Date: **09/17/2025**

Rig Release Date: **11/13/2025**

I hereby certify that the information above is true and complete to the best of my knowledge and belief.

SIGNATURE Vishal Rajan TITLE Regulatory Analyst DATE 3/18/2026

Type or print name Vishal Rajan E-mail address: vishal.rajan@exxonmobil.com PHONE: 505-787-0508

**For State Use Only**

APPROVED BY: \_\_\_\_\_ TITLE \_\_\_\_\_ DATE \_\_\_\_\_

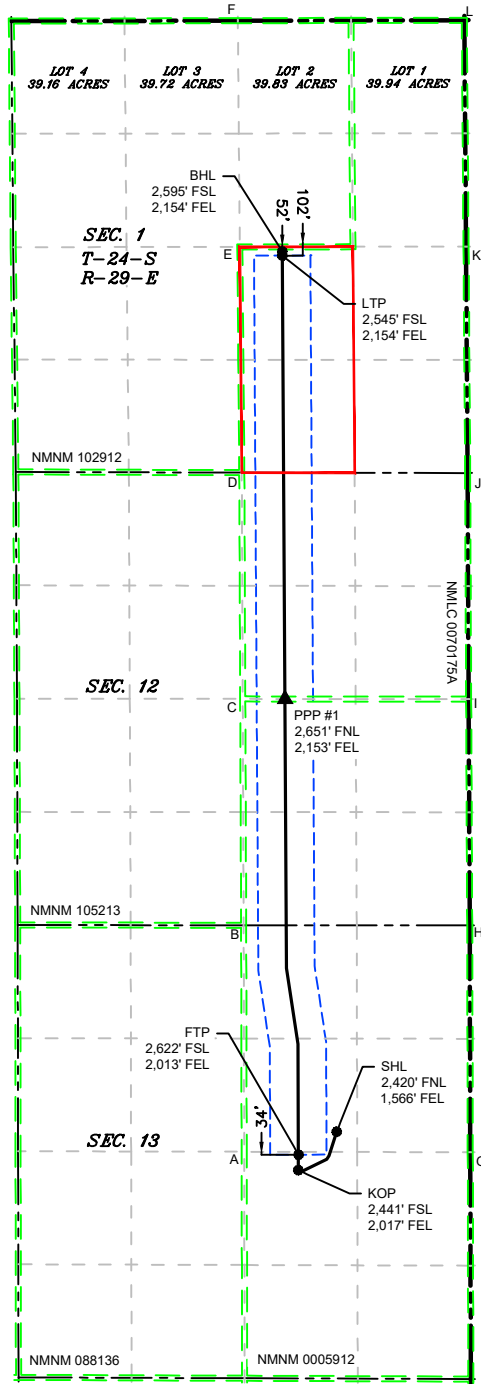
Conditions of Approval (if any): \_\_\_\_\_



ACREAGE DEDICATION PLATS

This grid represents a standard section. You may superimpose a non-standard section, or larger area, over this grid. Operators must outline the dedicated areage in a red box, clearly show the well surface location and bottom hole location, if it is directionally drilled, with the dimensions from the section lines in the cardinal directions. If this is a horizontal wellbore show on this plat the location of the First Take Point and Last Take Point, and the point within the completed interval (other than the First Take Point or Last Take Point) that is closest to any outer boundary of the tract.

Surveyors shall use the latest United States government survey or dependent resurvey. Well Locations will be in reference to the New Mexico Principal Meridian. If the land is not surveyed, contact the OCD Engineering Bureau. Independent subdivision surveys will not be accepted.



LEGEND

- SECTION LINE
- 330' BUFFER
- MINERAL LEASE
- PPP
- WELL
- DEDICATED ACREAGE
- WELL BORE
- TOWNSHIP LINE

WELL COORDINATE TABLE								
WELL	NAD 83 NME X	NAD 83 NME Y	NAD 83 LAT	NAD 83 LON	NAD 27 NME X	NAD 27 NME Y	NAD 27 LAT	NAD 27 LON
SHL	664,658.4	443,327.9	32.218156	-103.934563	623,474.9	443,268.5	32.218032	-103.934074
KOP	664,208.4	442,877.9	32.216924	-103.936023	623,024.9	442,818.5	32.216799	-103.935535
FTP	664,211.7	443,058.8	32.217421	-103.936011	623,028.2	442,999.5	32.217297	-103.935522
LTP	664,021.3	453,595.2	32.246386	-103.936501	622,838.1	453,535.6	32.246262	-103.936010
BHL	664,021.0	453,645.2	32.246523	-103.936501	622,837.8	453,585.6	32.246399	-103.936011
PPP #1	664,052.5	448,399.4	32.232103	-103.936462	622,869.1	448,339.9	32.231979	-103.935972

CORNER COORDINATE TABLE				
CORNER	NAD 83 NME X	NAD 83 NME Y	NAD 27 NME X	NAD 27 NME Y
A	663,576.0	443,093.9	622,392.5	443,034.6
B	663,570.2	445,748.2	622,386.8	445,688.8
C	663,559.1	448,399.9	622,375.8	448,340.4
D	663,547.9	451,051.0	622,364.7	450,991.4
E	663,524.5	453,696.5	622,341.4	453,636.9
F	663,501.0	456,347.1	622,318.0	456,287.4
G	666,224.6	443,088.1	625,041.0	443,028.8
H	666,218.3	445,746.5	625,034.9	445,687.1
I	666,205.3	448,396.9	625,022.0	448,337.4
J	666,193.9	451,046.7	625,010.6	450,987.1
K	666,174.6	453,699.9	624,991.5	453,640.3
L	666,154.8	456,352.9	624,971.7	456,293.2

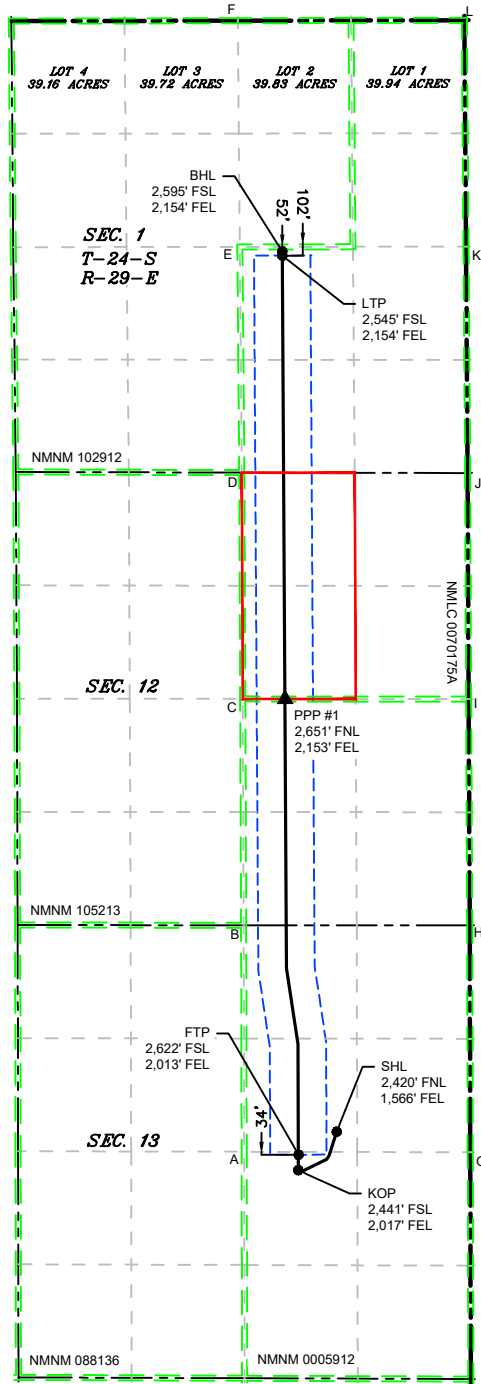
D:\618.013 XTO Energy - NM\003 Poker Lake Unit\04 - 13-1,13-24 PC - EDDY\Wells\25 - PLU Pierce Canyon 13-24 705H\DWG\13-24 PC 705H.dwg



ACREAGE DEDICATION PLATS

This grid represents a standard section. You may superimpose a non-standard section, or larger area, over this grid. Operators must outline the dedicated areage in a red box, clearly show the well surface location and bottom hole location, if it is directionally drilled, with the dimensions from the section lines in the cardinal directions. If this is a horizontal wellbore show on this plat the location of the First Take Point and Last Take Point, and the point within the completed interval (other than the First Take Point or Last Take Point) that is closest to any outer boundary of the tract.

Surveyors shall use the latest United States government survey or dependent resurvey. Well Locations will be in reference to the New Mexico Principal Meridian. If the land is not surveyed, contact the OCD Engineering Bureau. Independent subdivision surveys will not be accepted.



LEGEND

- SECTION LINE
- 330' BUFFER
- MINERAL LEASE
- DEDICATED ACREAGE
- TOWNSHIP LINE
- WELL BORE
- PPP
- WELL

WELL COORDINATE TABLE								
WELL	NAD 83 NME X	NAD 83 NME Y	NAD 83 LAT	NAD 83 LON	NAD 27 NME X	NAD 27 NME Y	NAD 27 LAT	NAD 27 LON
SHL	664,658.4	443,327.9	32.218156	-103.934563	623,474.9	443,268.5	32.218032	-103.934074
KOP	664,208.4	442,877.9	32.216924	-103.936023	623,024.9	442,818.5	32.216799	-103.935535
FTP	664,211.7	443,058.8	32.217421	-103.936011	623,028.2	442,999.5	32.217297	-103.935522
LTP	664,021.3	453,595.2	32.246386	-103.936501	622,838.1	453,535.6	32.246262	-103.936010
BHL	664,021.0	453,645.2	32.246523	-103.936501	622,837.8	453,585.6	32.246399	-103.936011
PPP #1	664,052.5	448,399.4	32.232103	-103.936462	622,869.1	448,339.9	32.231979	-103.935972

CORNER COORDINATE TABLE				
CORNER	NAD 83 NME X	NAD 83 NME Y	NAD 27 NME X	NAD 27 NME Y
A	663,576.0	443,093.9	622,392.5	443,034.6
B	663,570.2	445,748.2	622,386.8	445,688.8
C	663,559.1	448,399.9	622,375.8	448,340.4
D	663,547.9	451,051.0	622,364.7	450,991.4
E	663,524.5	453,696.5	622,341.4	453,636.9
F	663,501.0	456,347.1	622,318.0	456,287.4
G	666,224.6	443,088.1	625,041.0	443,028.8
H	666,218.3	445,746.5	625,034.9	445,687.1
I	666,205.3	448,396.9	625,022.0	448,337.4
J	666,193.9	451,046.7	625,010.6	450,987.1
K	666,174.6	453,699.9	624,991.5	453,640.3
L	666,154.8	456,352.9	624,971.7	456,293.2

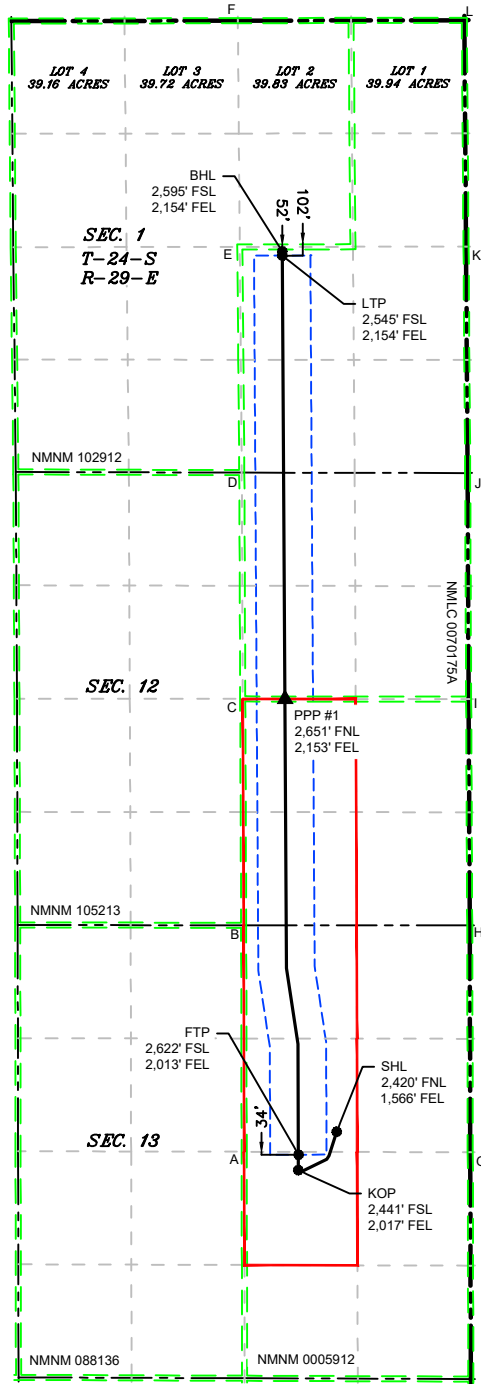
D:\618.013 XTO Energy - NM\003 Poker Lake Unit\04 - 13-1,13-24 PC - EDDY\Wells\25 - PLU Pierce Canyon 13-24 705H\DWG\13-24 PC 705H.dwg



ACREAGE DEDICATION PLATS

This grid represents a standard section. You may superimpose a non-standard section, or larger area, over this grid. Operators must outline the dedicated areage in a red box, clearly show the well surface location and bottom hole location, if it is directionally drilled, with the dimensions from the section lines in the cardinal directions. If this is a horizontal wellbore show on this plat the location of the First Take Point and Last Take Point, and the point within the completed interval (other than the First Take Point or Last Take Point) that is closest to any outer boundary of the tract.

Surveyors shall use the latest United States government survey or dependent resurvey. Well Locations will be in reference to the New Mexico Principal Meridian. If the land is not surveyed, contact the OCD Engineering Bureau. Independent subdivision surveys will not be accepted.



LEGEND

- SECTION LINE
- 330' BUFFER
- TOWNSHIP LINE
- MINERAL LEASE
- DEDICATED ACREAGE
- WELL BORE
- PPP
- WELL

WELL COORDINATE TABLE								
WELL	NAD 83 NME X	NAD 83 NME Y	NAD 83 LAT	NAD 83 LON	NAD 27 NME X	NAD 27 NME Y	NAD 27 LAT	NAD 27 LON
SHL	664,658.4	443,327.9	32.218156	-103.934563	623,474.9	443,268.5	32.218032	-103.934074
KOP	664,208.4	442,877.9	32.216924	-103.936023	623,024.9	442,818.5	32.216799	-103.935535
FTP	664,211.7	443,058.8	32.217421	-103.936011	623,028.2	442,999.5	32.217297	-103.935522
LTP	664,021.3	453,595.2	32.246386	-103.936501	622,838.1	453,535.6	32.246262	-103.936010
BHL	664,021.0	453,645.2	32.246523	-103.936501	622,837.8	453,585.6	32.246399	-103.936011
PPP #1	664,052.5	448,399.4	32.232103	-103.936462	622,869.1	448,339.9	32.231979	-103.935972

CORNER COORDINATE TABLE				
CORNER	NAD 83 NME X	NAD 83 NME Y	NAD 27 NME X	NAD 27 NME Y
A	663,576.0	443,093.9	622,392.5	443,034.6
B	663,570.2	445,748.2	622,386.8	445,688.8
C	663,559.1	448,399.9	622,375.8	448,340.4
D	663,547.9	451,051.0	622,364.7	450,991.4
E	663,524.5	453,696.5	622,341.4	453,636.9
F	663,501.0	456,347.1	622,318.0	456,287.4
G	666,224.6	443,088.1	625,041.0	443,028.8
H	666,218.3	445,746.5	625,034.9	445,687.1
I	666,205.3	448,396.9	625,022.0	448,337.4
J	666,193.9	451,046.7	625,010.6	450,987.1
K	666,174.6	453,699.9	624,991.5	453,640.3
L	666,154.8	456,352.9	624,971.7	456,293.2

D:\618.013 XTO Energy - NM\003 Poker Lake Unit\04 - 13-1,13-24 PC - EDDY\Wells\25 - PLU Pierce Canyon 13-24 705H\DWG\13-24 PC 705H.dwg

Sante Fe Main Office  
Phone: (505) 476-3441

General Information  
Phone: (505) 629-6116

Online Phone Directory  
<https://www.emnrd.nm.gov/ocd/contact-us>

**State of New Mexico**  
**Energy, Minerals and Natural Resources**  
**Oil Conservation Division**  
**1220 S. St Francis Dr.**  
**Santa Fe, NM 87505**

CONDITIONS

Action 564620

**CONDITIONS**

Operator: XTO PERMIAN OPERATING LLC. 3617 Big Spring St. MIDLAND, TX 79705	OGRID: 373075
	Action Number: 564620
	Action Type: [C-103] NOI Change of Plans (C-103A)

**CONDITIONS**

Created By	Condition	Condition Date
dmcclure	None	4/2/2026