

Santa Fe Main Office
Phone: (505) 476-3441
General Information
Phone: (505) 629-6116

State of New Mexico
Energy, Minerals and Natural Resources

Online Phone Directory Visit:
<https://www.emnrd.nm.gov/ocd/contact-us/>

OIL CONSERVATION DIVISION
1220 South St. Francis Dr.
Santa Fe, NM 87505

SUNDRY NOTICES AND REPORTS ON WELLS (DO NOT USE THIS FORM FOR PROPOSALS TO DRILL OR TO DEEPEN OR PLUG BACK TO A DIFFERENT RESERVOIR. USE "APPLICATION FOR PERMIT" (FORM C-101) FOR SUCH PROPOSALS.)		WELL API NO. 30-015-56752
1. Type of Well: Oil Well <input checked="" type="checkbox"/> Gas Well <input type="checkbox"/> Other <input type="checkbox"/>		5. Indicate Type of Lease STATE <input type="checkbox"/> FEE <input type="checkbox"/>
2. Name of Operator XTO PERMIAN OPERATING, LLC.		6. State Oil & Gas Lease No. NMNM05912
3. Address of Operator 3617 North Big Spring Street, Midland, TX 78705		7. Lease Name or Unit Agreement Name POKER LAKE UNIT 13 24 PC
4. Well Location Unit Letter G ; 2420 feet from the NORTH line and 1536 feet from the EAST line Section 13 Township 24S Range 29E NMPM EDDY County		8. Well Number 806H 9. OGRID Number 373075
		10. Pool name or Wildcat PIERCE CROSSING; BONE SPRING, EAST
		11. Elevation (Show whether DR, RKB, RT, GR, etc.) GL 3113'

12. Check Appropriate Box to Indicate Nature of Notice, Report or Other Data

NOTICE OF INTENTION TO: PERFORM REMEDIAL WORK <input type="checkbox"/> PLUG AND ABANDON <input type="checkbox"/> TEMPORARILY ABANDON <input type="checkbox"/> CHANGE PLANS <input type="checkbox"/> PULL OR ALTER CASING <input type="checkbox"/> MULTIPLE COMPL <input type="checkbox"/> DOWNHOLE COMMINGLE <input type="checkbox"/> CLOSED-LOOP SYSTEM <input type="checkbox"/> OTHER: <input checked="" type="checkbox"/>		SUBSEQUENT REPORT OF: REMEDIAL WORK <input type="checkbox"/> ALTERING CASING <input type="checkbox"/> COMMENCE DRILLING OPNS. <input type="checkbox"/> P AND A <input type="checkbox"/> CASING/CEMENT JOB <input type="checkbox"/> OTHER: <input type="checkbox"/>	
---	--	---	--

13. Describe proposed or completed operations. (Clearly state all pertinent details, and give pertinent dates, including estimated date of starting any proposed work). SEE RULE 19.15.7.14 NMAC. For Multiple Completions: Attach wellbore diagram of proposed completion or recompletion.

XTO Permian Operating, LLC. respectfully requests that the Division accept the attached C-102s as a clean copy for its records. No changes are being proposed from the version currently on file with the BLM.

Spud Date: **09/15/2025**

Rig Release Date: **12/06/2025**

I hereby certify that the information above is true and complete to the best of my knowledge and belief.

SIGNATURE Vishal Rajan TITLE REGUALTORY ANALYST DATE 03/19/2026

Type or print name VISHAL RAJAN E-mail address: vishal.rajana@exxonmobil.com PHONE: 505-787-0508

For State Use Only

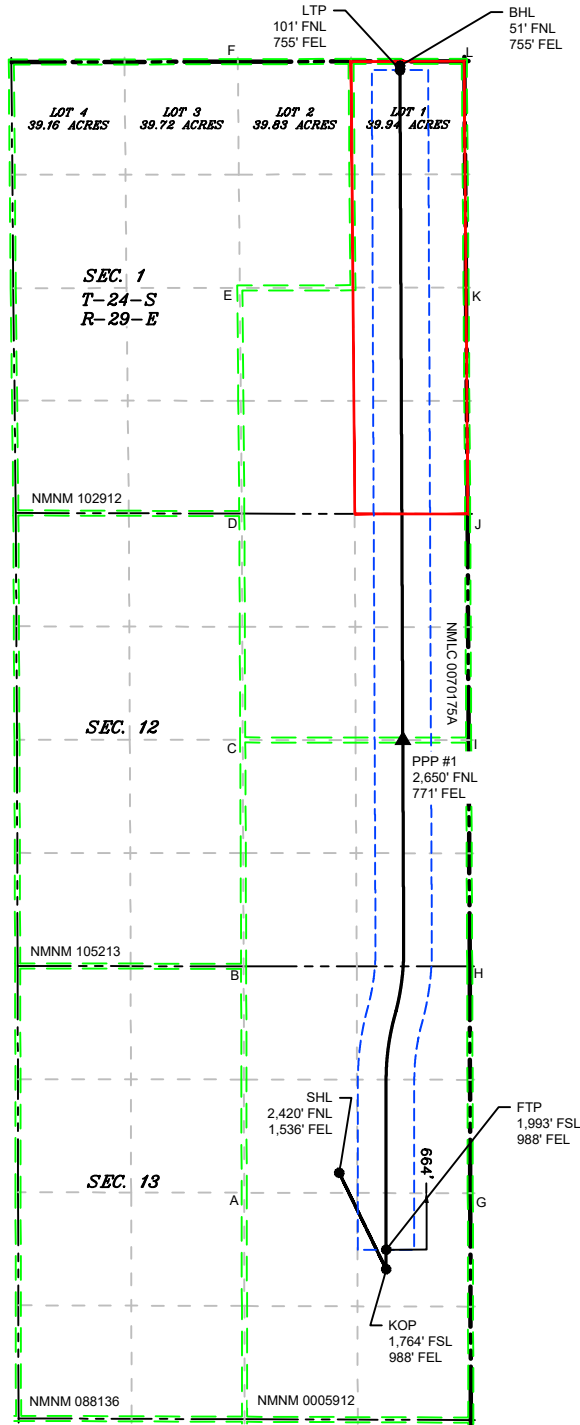
APPROVED BY: _____ TITLE _____ DATE _____

Conditions of Approval (if any):

ACREAGE DEDICATION PLATS

This grid represents a standard section. You may superimpose a non-standard section, or larger area, over this grid. Operators must outline the dedicated areage in a red box, clearly show the well surface location and bottom hole location, if it is directionally drilled, with the dimensions from the section lines in the cardinal directions. If this is a horizontal wellbore show on this plat the location of the First Take Point and Last Take Point, and the point within the completed interval (other than the First Take Point or Last Take Point) that is closest to any outer boundary of the tract.

Surveyors shall use the latest United States government survey or dependent resurvey. Well Locations will be in reference to the New Mexico Principal Meridian. If the land is not surveyed, contact the OCD Engineering Bureau. Independent subdivision surveys will not be accepted.



LEGEND

- SECTION LINE
- 330' BUFFER
- PPP
- TOWNSHIP LINE
- MINERAL LEASE
- WELL
- DEDICATED ACREAGE
- WELL BORE

WELL COORDINATE TABLE								
WELL	NAD 83 NME X	NAD 83 NME Y	NAD 83 LAT	NAD 83 LON	NAD 27 NME X	NAD 27 NME Y	NAD 27 LAT	NAD 27 LON
SHL	664,688.4	443,327.7	32.218155	-103.934466	623,504.9	443,268.3	32.218031	-103.933977
KOP	665,238.5	442,197.1	32.215042	-103.932701	624,054.9	442,137.8	32.214918	-103.932212
FTP	665,238.5	442,426.3	32.215672	-103.932698	624,054.9	442,366.9	32.215547	-103.932210
LTP	665,400.7	456,250.3	32.253670	-103.932007	624,217.6	456,190.6	32.253546	-103.931516
BHL	665,400.5	456,300.7	32.253809	-103.932007	624,217.4	456,241.0	32.253684	-103.931516
PPP1	665,434.0	448,397.8	32.232084	-103.931994	624,250.7	448,338.3	32.231960	-103.931504

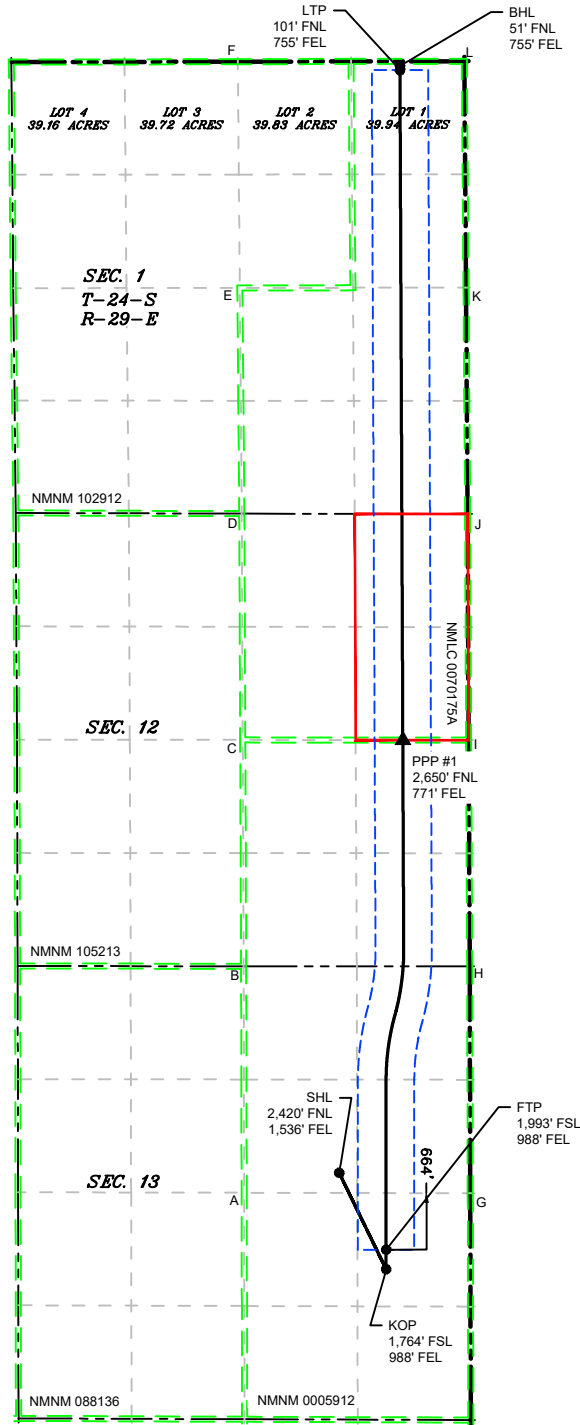
CORNER COORDINATE TABLE				
CORNER	NAD 83 NME X	NAD 83 NME Y	NAD 27 NME X	NAD 27 NME Y
A	663,576.0	443,093.9	622,392.5	443,034.6
B	663,570.2	445,748.2	622,386.8	445,688.8
C	663,559.1	448,399.9	622,375.8	448,340.4
D	663,547.9	451,051.0	622,364.7	450,991.4
E	663,524.5	453,696.5	622,341.4	453,636.9
F	663,501.0	456,347.1	622,318.0	456,287.4
G	666,224.6	443,088.1	625,041.0	443,028.8
H	666,218.3	445,746.5	625,034.9	445,687.1
I	666,205.3	448,396.9	625,022.0	448,337.4
J	666,193.9	451,046.7	625,010.6	450,987.1
K	666,174.6	453,699.9	624,991.5	453,640.3
L	666,154.8	456,352.9	624,971.7	456,293.2

G:\618.013 XTO Energy - NM\003 Poker Lake Unit\04 - 13-1,13-24 PC - EDDY\Wells\29 - PLU Pierce Canyon 13-24 806H\DWG\13-24 PC 806H.dwg

ACREAGE DEDICATION PLATS

This grid represents a standard section. You may superimpose a non-standard section, or larger area, over this grid. Operators must outline the dedicated areage in a red box, clearly show the well surface location and bottom hole location, if it is directionally drilled, with the dimensions from the section lines in the cardinal directions. If this is a horizontal wellbore show on this plat the location of the First Take Point and Last Take Point, and the point within the completed interval (other than the First Take Point or Last Take Point) that is closest to any outer boundary of the tract.

Surveyors shall use the latest United States government survey or dependent resurvey. Well Locations will be in reference to the New Mexico Principal Meridian. If the land is not surveyed, contact the OCD Engineering Bureau. Independent subdivision surveys will not be accepted.



LEGEND

- SECTION LINE
- TOWNSHIP LINE
- DEDICATED ACREAGE
- 330' BUFFER
- MINERAL LEASE
- WELL BORE
- PPP
- WELL

WELL COORDINATE TABLE								
WELL	NAD 83 NME X	NAD 83 NME Y	NAD 83 LAT	NAD 83 LON	NAD 27 NME X	NAD 27 NME Y	NAD 27 LAT	NAD 27 LON
SHL	664,688.4	443,327.7	32.218155	-103.934466	623,504.9	443,268.3	32.218031	-103.933977
KOP	665,238.5	442,197.1	32.215042	-103.932701	624,054.9	442,137.8	32.214918	-103.932212
FTP	665,238.5	442,426.3	32.215672	-103.932698	624,054.9	442,366.9	32.215547	-103.932210
LTP	665,400.7	456,250.3	32.253670	-103.932007	624,217.6	456,190.6	32.253546	-103.931516
BHL	665,400.5	456,300.7	32.253809	-103.932007	624,217.4	456,241.0	32.253684	-103.931516
PPP1	665,434.0	448,397.8	32.232084	-103.931994	624,250.7	448,338.3	32.231960	-103.931504

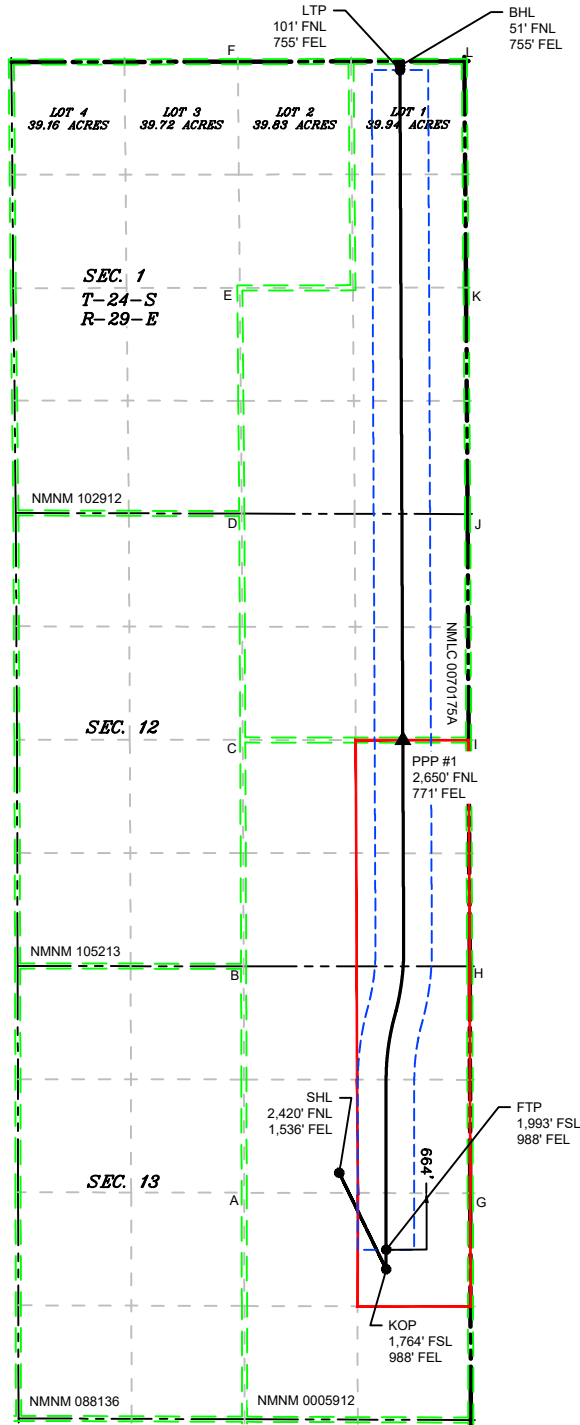
CORNER COORDINATE TABLE				
CORNER	NAD 83 NME X	NAD 83 NME Y	NAD 27 NME X	NAD 27 NME Y
A	663,576.0	443,093.9	622,392.5	443,034.6
B	663,570.2	445,748.2	622,386.8	445,688.8
C	663,559.1	448,399.9	622,375.8	448,340.4
D	663,547.9	451,051.0	622,364.7	450,991.4
E	663,524.5	453,696.5	622,341.4	453,636.9
F	663,501.0	456,347.1	622,318.0	456,287.4
G	666,224.6	443,088.1	625,041.0	443,028.8
H	666,218.3	445,746.5	625,034.9	445,687.1
I	666,205.3	448,396.9	625,022.0	448,337.4
J	666,193.9	451,046.7	625,010.6	450,987.1
K	666,174.6	453,699.9	624,991.5	453,640.3
L	666,154.8	456,352.9	624,971.7	456,293.2

G:\618.013 XTO Energy - NM\003 Poker Lake Unit\04 - 13-1,13-24 PC - EDDY\Wells\29 - PLU Pierce Canyon 13-24 806H\DWG\13-24 PC 806H.dwg
 POKER LAKE UNIT 13-24 PC 806H
 Released to Imaging: 4/2/2026 2:01:49 PM

ACREAGE DEDICATION PLATS

This grid represents a standard section. You may superimpose a non-standard section, or larger area, over this grid. Operators must outline the dedicated areage in a red box, clearly show the well surface location and bottom hole location, if it is directionally drilled, with the dimensions from the section lines in the cardinal directions. If this is a horizontal wellbore show on this plat the location of the First Take Point and Last Take Point, and the point within the completed interval (other than the First Take Point or Last Take Point) that is closest to any outer boundary of the tract.

Surveyors shall use the latest United States government survey or dependent resurvey. Well Locations will be in reference to the New Mexico Principal Meridian. If the land is not surveyed, contact the OCD Engineering Bureau. Independent subdivision surveys will not be accepted.



LEGEND

- SECTION LINE
- TOWNSHIP LINE
- DEDICATED ACREAGE
- 330' BUFFER
- MINERAL LEASE
- WELL BORE
- PPP
- WELL

WELL COORDINATE TABLE								
WELL	NAD 83 NME X	NAD 83 NME Y	NAD 83 LAT	NAD 83 LON	NAD 27 NME X	NAD 27 NME Y	NAD 27 LAT	NAD 27 LON
SHL	664,688.4	443,327.7	32.218155	-103.934466	623,504.9	443,268.3	32.218031	-103.933977
KOP	665,238.5	442,197.1	32.215042	-103.932701	624,054.9	442,137.8	32.214918	-103.932212
FTP	665,238.5	442,426.3	32.215672	-103.932698	624,054.9	442,366.9	32.215547	-103.932210
LTP	665,400.7	456,250.3	32.253670	-103.932007	624,217.6	456,190.6	32.253546	-103.931516
BHL	665,400.5	456,300.7	32.253809	-103.932007	624,217.4	456,241.0	32.253684	-103.931516
PPP1	665,434.0	448,397.8	32.232084	-103.931994	624,250.7	448,338.3	32.231960	-103.931504

CORNER COORDINATE TABLE				
CORNER	NAD 83 NME X	NAD 83 NME Y	NAD 27 NME X	NAD 27 NME Y
A	663,576.0	443,093.9	622,392.5	443,034.6
B	663,570.2	445,748.2	622,386.8	445,688.8
C	663,559.1	448,399.9	622,375.8	448,340.4
D	663,547.9	451,051.0	622,364.7	450,991.4
E	663,524.5	453,696.5	622,341.4	453,636.9
F	663,501.0	456,347.1	622,318.0	456,287.4
G	666,224.6	443,088.1	625,041.0	443,028.8
H	666,218.3	445,746.5	625,034.9	445,687.1
I	666,205.3	448,396.9	625,022.0	448,337.4
J	666,193.9	451,046.7	625,010.6	450,987.1
K	666,174.6	453,699.9	624,991.5	453,640.3
L	666,154.8	456,352.9	624,971.7	456,293.2

G:\618.013 XTO Energy - NM\003 Poker Lake Unit\04 - 13-1,13-24 PC - EDDY\Wells\29 - PLU Pierce Canyon 13-24 806H\DWG\13-24 PC 806H.dwg
 G:\618.013 XTO Energy - NM\003 Poker Lake Unit\13-24 PC 806H

Sante Fe Main Office
Phone: (505) 476-3441

General Information
Phone: (505) 629-6116

Online Phone Directory
<https://www.emnrd.nm.gov/ocd/contact-us>

State of New Mexico
Energy, Minerals and Natural Resources
Oil Conservation Division
1220 S. St Francis Dr.
Santa Fe, NM 87505

CONDITIONS

Action 564643

CONDITIONS

Operator: XTO PERMIAN OPERATING LLC. 3617 Big Spring St. MIDLAND, TX 79705	OGRID: 373075
	Action Number: 564643
	Action Type: [C-103] NOI Change of Plans (C-103A)

CONDITIONS

Created By	Condition	Condition Date
dmcclure	None	4/2/2026