

Submit 1 Copy To Appropriate District

Office
District I - (575) 393-6161
1625 N. French Dr., Hobbs, NM 88240
District II - (575) 748-1283
811 S. First St., Artesia, NM 88210
District III - (505) 334-6178
1000 Rio Brazos Rd., Aztec, NM 87410
District IV - (505) 476-3460
1220 S. St. Francis Dr., Santa Fe, NM 87505

State of New Mexico
Energy, Minerals and Natural Resources

Form C-103
Revised July 18, 2013

OIL CONSERVATION DIVISION
1220 South St. Francis Dr.
Santa Fe, NM 87505

WELL API NO. 30-045-38520
5. Indicate Type of Lease STATE [] FEE [X]
6. State Oil & Gas Lease No.
7. Lease Name or Unit Agreement Name Ruby Jones
8. Well Number 1M
9. OGRID Number 372171
10. Pool name or Wildcat Blanco Mesaverde / Basin Dakota

SUNDRY NOTICES AND REPORTS ON WELLS
(DO NOT USE THIS FORM FOR PROPOSALS TO DRILL OR TO DEEPEN OR PLUG BACK TO A DIFFERENT RESERVOIR. USE "APPLICATION FOR PERMIT" (FORM C-101) FOR SUCH PROPOSALS.)
1. Type of Well: Oil Well [] Gas Well [X] Other
2. Name of Operator Hilcorp Energy Company
3. Address of Operator 382 Road 3100, Aztec, NM 87410
4. Well Location Unit Letter N: 1054 feet from the South line and 2332 feet from the West line
Section 7 Township 030N Range 011W NMPM County SAN JUAN
11. Elevation (Show whether DR, RKB, RT, GR, etc.) 5607' GL

12. Check Appropriate Box to Indicate Nature of Notice, Report or Other Data

NOTICE OF INTENTION TO:
PERFORM REMEDIAL WORK [X] PLUG AND ABANDON []
TEMPORARILY ABANDON [] CHANGE PLANS []
PULL OR ALTER CASING [] MULTIPLE COMPL []
DOWNHOLE COMMINGLE []
CLOSED-LOOP SYSTEM []
OTHER: [] SIDETRACK
SUBSEQUENT REPORT OF:
REMEDIAL WORK [] ALTERING CASING []
COMMENCE DRILLING OPNS. [] P AND A []
CASING/CEMENT JOB []
OTHER: []

13. Describe proposed or completed operations. (Clearly state all pertinent details, and give pertinent dates, including estimated date of starting any proposed work). SEE RULE 19.15.7.14 NMAC. For Multiple Completions: Attach wellbore diagram of proposed completion or recompletion.

Hilcorp Energy requests permission to remediate/squeeze cement on the production casing per the attached procedure. In addition, Hilcorp wishes to perforate as follows:

Proposed perforations: MV 3,905' - 4,825'; DK 6,602' - 6,833'. These perforations are in TVD.

Spud Date: [] Rig Release Date: []

I hereby certify that the information above is true and complete to the best of my knowledge and belief.

SIGNATURE Cherylene Weston TITLE Operations/Regulatory Tech-Sr. DATE 03/20/2026

Type or print name Cherylene Weston E-mail address: cweston@hilcorp.com PHONE: 713-289-2615

For State Use Only

APPROVED BY: TITLE DATE

Conditions of Approval (if any)

Proposed Cement Remediation Procedure - NOI

Ruby Jones 1M

API # - 3004538520

Procedure:

Hold PJSM prior to beginning any operations. Properly document all operations via the JSA process. Ensure that all personnel onsite abide by HEC safety protocol, including PPE, housekeeping, and standard guidelines.

Verify cathodic protection is off and wellhead instrumentation is properly disconnected from the wellhead. Comply with all NMOCD, BLM, and HEC safety and environmental regulations.

Verify there is no H2S present prior to beginning operations. If any H2S is present, take the necessary actions to ensure that the location is safe prior to beginning operations.

Observe and record pressures across all string daily, prior to beginning operations. **Remember to notify NMOCD 24 hours prior to starting operations on location.**

1. Verify all wellhead valves are operable.
2. Move onto well location with land rig. Check well pressures on all casing strings and record (daily).
3. Check well for H2S and blow down well as necessary.
4. RD wellhead and RU BOPs. Function test BOP pipe rams and blind rams.
5. See CBL Dated 3/13/2026
6. PU Work String. RIH and load hole with fluid on top of CBP isolation Plug. Pressure Test Against CBP to 1,500psi. TOOH and stand up work string in derrick.
7. MIRU WL. RIH and perforate Squeeze holes @ 5,426'. TOH with WL tools. Attempt to establish circulation out production casing/surface casing annulus with rig pump. Call in with findings to engineer.
8. Set Cast Iron Cement Retainer at 5420'. Go in hole with cast iron cement retainer stinger.
9. RU Cement crew and perform a circulating squeeze. Circulate enough cement to satisfy state requirements of 150' of cement above top perf and 200' above Intermediate Shoe.
10. After cement has had time to set up. RU WL and Run a CBL. If CBL appears to be sufficient PU work string and drillout cement to CBP isolation plug. Perform witnessed MIT with OCD.

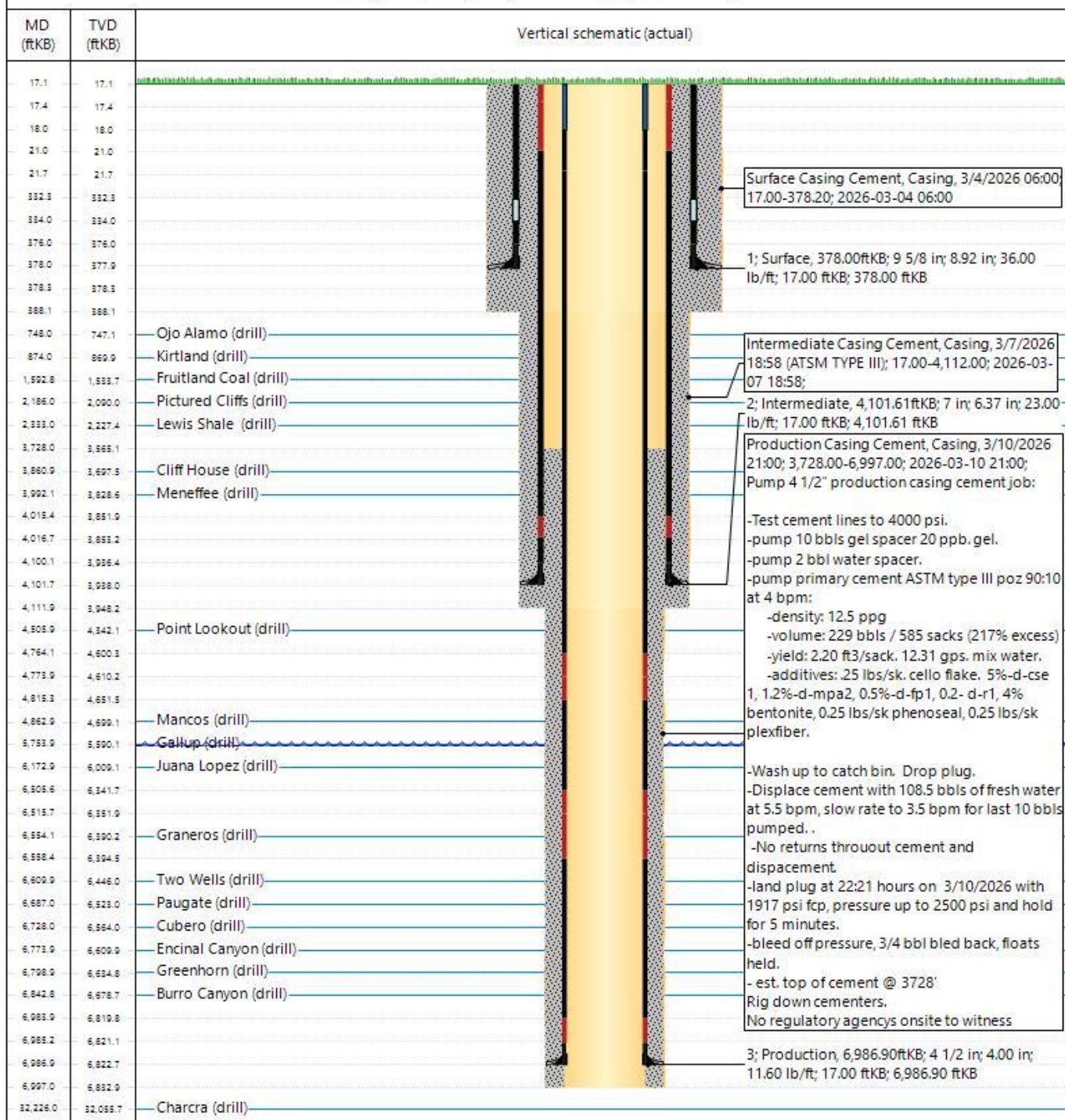


Current Schematic - Version 3

Well Name: Ruby Jones 1M

API / UWI 3004538520	Surface Legal Location S07 T30N R11W LotN	Field Name Blanco Mesa Verde	Route	State/Province NEW MEXICO	Well Configuration Type Directional
Ground Elevation (ft) 5,607.00	Original KB/RT Elevation (ft) 5,624.00	Tubing Hanger Elevation (ft)	RKB to GL (ft) 17.00	KB-Casing Flange Distance (ft)	KB-Tubing Hanger Distance (ft)
Tubing Strings					
Run Date	Set Depth (ftKB)	String Max Nominal OD (in)	String Min Nominal ID (in)	Weight/Length (lb/ft)	Original Spud Date

Original Hole, Ruby Jones 1M [Directional]



Sante Fe Main Office
Phone: (505) 476-3441

General Information
Phone: (505) 629-6116

Online Phone Directory
<https://www.emnrd.nm.gov/oecd/contact-us>

State of New Mexico
Energy, Minerals and Natural Resources
Oil Conservation Division
1220 S. St Francis Dr.
Santa Fe, NM 87505

CONDITIONS

Action 565115

CONDITIONS

Operator: HILCORP ENERGY COMPANY 1111 Travis Street Houston, TX 77002	OGRID: 372171
	Action Number: 565115
	Action Type: [C-103] NOI Change of Plans (C-103A)

CONDITIONS

Created By	Condition	Condition Date
ward.rikala	Notify OCD inspector 24 hrs prior to start of operations	4/2/2026
ward.rikala	Run new CBL post squeeze to confirm proper zonal isolation.	4/2/2026