



P.O. Box 2267, Midland, Texas 79702
Phone: (432) 686-3600 Fax: (432) 686-3773

NMOCD electronic submittal

October 17, 2025

RE: Request to Convert Ross Endurance 25 No. 2 SWD (API No. 30-025-41067) Well to Monitoring Well

Dear Mr. Goetze,

EOG Resources, Inc. ("EOG") is requesting approval to convert the Endurance 25 No. 2 SWD (API No. 30-025-41067) exiting well into a monitor well. All requested information supporting documentation are attached for your review.

Also attached is a letter requesting approval to maintain injection authority while the well is operated as monitoring well.

Please do not hesitate to contact me with any questions or concerns.

Thank you for your time and consideration.

Kind regards,

Patricia Donald

Patricia Donald
Regulatory Manager
EOG Resources, Inc.



1 | Page
Endurance 25 No. 2 SWD

9/16/2025

**Endurance 25 No. 2 SWD
BHP Gauge Install Procedure**

API #: 30-025-41067
Location: Lea County, NM
Lat/Long: 32.0153084, -103.5314026
H2S: 3500 PPM was seen in November of 2015

Perforations: 5,955, – 7,070'
Injection Formation: Cherry Canyon (DMG)
Injection Zone: 5,850 – 7,200'
Maximum Wellhead Injection Pressure: 1,170 psi

PROCEDURE:

1. Prior to MOB equipment, LOTO facility pumps
2. Check pressures on wellhead
 - a. Ensure backside and casing pressures are zero. Note tubing pressure
3. Conduct MIT on well in accordance with 19.15.26 NMAC
4. MIRU pump to tubing casing annulus
5. Pressure up to 500 psi and hold for minimum of 30 minutes
 - a. Record test on chart and discuss results with engineer
 - b. File report to state
6. MIRU BHP gauge cable unit and equipment
7. Shut in double master valve and bleed off pressure on T spool
8. Open needle valve on crown flange and wait 5 minutes to ensure no leak through master valve
9. ND crown flange and existing T spool
10. NU new T spool with 4-1/16" side gate valve and crown valve
11. MU BHP gauge, TEC Line, and pack off assembly
 - a. 15M dual pack off assembly
 - b. 0.75" OD Piezo gauge, 10M psi rating, 150°C
 - c. 0.25" OD TEC
12. NU dual pack off assembly to crown flange
 - a. Torque and test pack off assembly to WH specs
13. RU pump to side outlet on flow cross
14. Energize upper pack off assembly to 5,000 psi
15. Pressure test upper pack off through side outlet to 4,000 psi and hold for 30 minutes to ensure good seal on top pack off
16. Bleed pressure off flow cross
17. Energize lower pack off assembly to 5,000 psi



3 | Page

9/16/2025

Endurance 25 No. 2 SWD

CURRENT DOWNHOLE DESIGN (From Aug 2021):

Hole Size	Size/Grade	Wt.(#ft.)	Top (MD)	Bottom (MD)	Stage Cementer Depth	No.of Sks. & Type of Cement	Slurry Vol. (BBL)	Cement Top*	Amount Pulled
17-1/2	13-3/8	54.4		946		700 C		surface	
12-1/4	9-5/8	40		5080		1300 C		surface	
8-3/4	7	26		10835		250 C, 475 H		4920' CBL	

24. Tubing Record

Size	Depth Set (MD)	Packer Depth (MD)	Size	Depth Set (MD)	Packer Depth (MD)	Size	Depth Set (MD)	Packer Depth (MD)
3-1/2	5885	5885						

25. Producing Intervals

Formation	Top	Bottom	Perforated Interval	Size	No. Holes	Perf. Status
A) Delaware	5220		5955 - 7070'	0.39"	2640	Injecting
B)						

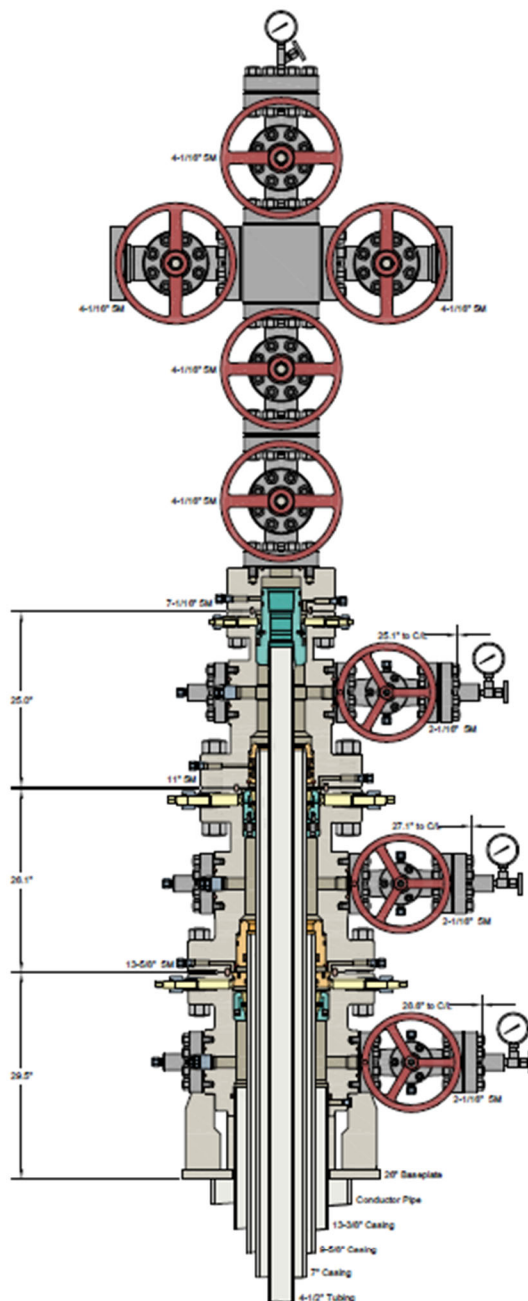
26. Perforation Record

Number	Name	Type	Top	Bottom	ID	OD
1.00	--	--	0.00	30.00	--	--
2.00	Tubing	Tubing	30.00	5,888.00	2.992	3.500
3.00	Sub	Sub	5,888.00	5,889.60	0.000	1.000
4.00	On/Off Tool	On/Off Tool	5,889.60	5,891.20	2.441	5.500
5.00	Packer	Packer	5,891.20	5,896.00	2.441	5.500
6.00	Pup Joint	Pup Joint	5,896.00	5,902.17	2.992	3.500
7.00	Profile Nipple	Profile Nipple	5,902.17	5,903.47	1.791	2.750
8.00	Wireline Entry Guide	Wireline Entry Guide	5,903.47	5,903.97	1.995	3.063



6 | Page
 Endurance 25 No. 2 SWD
CURRENT WHS:

9/16/2025



INFORMATION CONTAINED HEREIN IS THE PROPERTY OF CACTUS WELLHEAD, LLC. REPRODUCTION, DISCLOSURE, OR USE THEREOF IS PERMISSIBLE ONLY AS PROVIDED BY CONTRACT OR AS EXPRESSLY AUTHORIZED BY CACTUS WELLHEAD, LLC.

FROM CEE1377 & SDT-4704

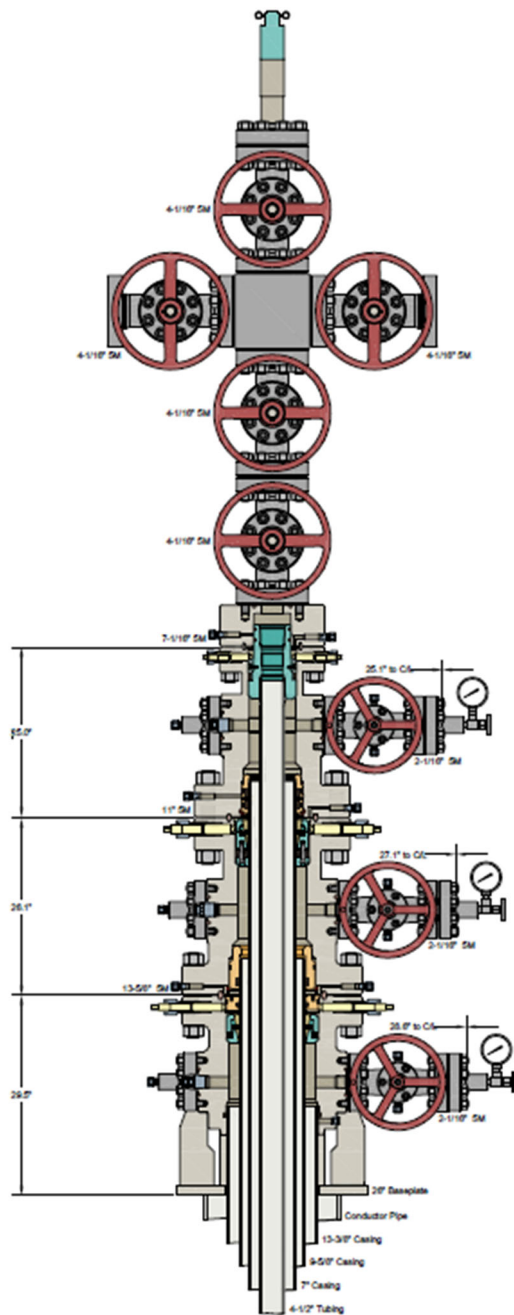
ALL DIMENSIONS APPROXIMATE

CACTUS WELLHEAD LLC		
13-3/8" x 9-5/8" x 7" x 4-1/2" Conventional Wellhead System With 11" 5M x 7-1/16" 5M CTH-HPS-F Tubing Head And 4-1/16" 5M x 4-1/16" 5M Production Tree Assembly	DRAWN	DLE
	APPRV	27JUN25
DRAWING NO.	SDT-5489-1	



7 | Page
 Endurance 25 No. 2 SWD
PROPOSED WHS:

9/16/2025



INFORMATION CONTAINED HEREIN IS THE PROPERTY OF CACTUS WELLHEAD, LLC. REPRODUCTION, DISCLOSURE, OR USE THEREOF IS PERMISSIBLE ONLY AS PROVIDED BY CONTRACT OR AS EXPRESSLY AUTHORIZED BY CACTUS WELLHEAD, LLC.

FROM CEE1377 & SDT-4704

ALL DIMENSIONS APPROXIMATE

CACTUS WELLHEAD LLC 13-3/8" x 9-5/8" x 7" x 4-1/2" Conventional Wellhead System With 11" 5M x 7-1/16" 5M CTH-HPS-F Tubing Head And 4-1/16" 5M x 4-1/16" 5M Production Tree Assembly	TC DOUBLE PACKOFF		
	DRAWN	DLE	27JUN25
	APPRV		
	DRAWING NO.	SDT-5489-2	



8 | Page
Endurance 25 No. 2 SWD

9/16/2025

CONTACTS:

Name	Title	Company	Phone
James McMath	Production Superintendent	EOG	432-269-1651
Cayden Sessions	Water Resources Engineer	EOG	832-381-8856
Adrian Flores	SWD Foreman	EOG	432-250-9848

DIRECTIONS TO WELL:

Directions to Location

From the intersection of State Hwy 18 & Hwy 128 in Jal, NM, go 14.1 miles west on 128 to CR 2 (Battle Axe Road) on left (between mile marker 38 & 39). Turn south and go 13 miles to stop sign. Take right at stop sign and go 0.2 of a mile to Dinwiddie Road on left. Turn south and go 0.7 of a mile to new lease road on left. Take new lease road south east for 1.4 miles. Turn south thru cattle guard and go 3.2 miles to new lease road on left. Turn left and go 0.2 of a mile to dead end on location.



P.O. Box 2267, Midland, Texas 79702
Phone: (432) 686-3600 Fax: (432) 686-3773

NMOCD electronic submittal

October 17, 2025

RE: Request to Maintain UIC Injection for SWD-1424-A and SWD-1311

Dear Mr. Goetze,

EOG Resources, Inc. ("EOG") is working with the New Mexico Oil Conservation Division ("OCD") to convert the Endurance 25 Federal SWD Well No. 2 (API No. 30-025-41067) (SWD-1424-A) and the Ross Gulch 8 #003 SWD (API No. 30-015-39736) (SWD-1311) into monitoring wells. The purpose of the monitoring wells will be to observe pressure in the Delaware Mountain Group formation.

Both SWD-1424-A and SWD-1311 include provisions requiring injection into the wellbore on an annual basis to maintain injection authority. *See* SWD-1424-A and SWD-1311, pages 2-3. Exceptions may be granted based on good cause. *Id.* EOG respectfully requests a two-year exception to this injection requirement while EOG implements and reviews the utility of the monitoring process. If EOG elects to resume injection into either of the two wells, EOG will communicate with the OCD in advance of injection.

Kind regards,

A handwritten signature in black ink that reads "Jordan Kessler".

Jordan Kessler
Senior Regulatory Advisor
EOG Resources, Inc.

Sante Fe Main Office
 Phone: (505) 476-3441

General Information
 Phone: (505) 629-6116

Online Phone Directory
<https://www.emnrd.nm.gov/ocd/contact-us>

State of New Mexico
Energy, Minerals and Natural Resources
Oil Conservation Division
1220 S. St Francis Dr.
Santa Fe, NM 87505

CONDITIONS

Action 516495

CONDITIONS

Operator: EOG RESOURCES INC 5509 Champions Drive Midland, TX 79706	OGRID: 7377
	Action Number: 516495
	Action Type: [C-103] Sub. General Sundry (C-103Z)

CONDITIONS

Created By	Condition	Condition Date
anthony.harris	Prior to gauge deployment, perform MIT and Bradenhead Test with OCD witness.	4/3/2026
anthony.harris	Submit a C-103Z Subsequent report to notify OCD of the date that monitoring activities commence	4/3/2026
anthony.harris	Submit a C-103Z on an Annual basis and attach a report summarizing observations during the reporting period which shall include a brief narrative and a graphical summary of the average reservoir pressure and temperature for each month of the monitoring period	4/3/2026
anthony.harris	Injection authority shall be maintained for a period of up to two years during monitoring operations	4/3/2026