

State of New Mexico
Energy, Minerals and Natural Resources

District I - (575) 393-6161
1625 N. French Dr., Hobbs, NM 88240
District II - (575) 748-1283
811 S. First St., Artesia, NM 88210
District III - (505) 334-6178
1000 Rio Brazos Rd., Aztec, NM 87410
District IV - (505) 476-3460
1220 S. St. Francis Dr., Santa Fe, NM 87505

OIL CONSERVATION DIVISION
1220 South St. Francis Dr.
Santa Fe, NM 87505

WELL API NO. 30-041-10137
5. Indicate Type of Lease STATE <input checked="" type="checkbox"/> FEE <input type="checkbox"/>
6. State Oil & Gas Lease No. E1369
7. Lease Name or Unit Agreement Name Haley Chaveroo San Andres Unit
8. Well Number #0014
9. OGRID Number 164557
10. Pool name or Wildcat Chavaroo San Andres

SUNDRY NOTICES AND REPORTS ON WELLS
(DO NOT USE THIS FORM FOR PROPOSALS TO DRILL OR TO DEEPEN OR PLUG BACK TO A DIFFERENT RESERVOIR. USE "APPLICATION FOR PERMIT" (FORM C-101) FOR SUCH PROPOSALS.)

1. Type of Well: Oil Well Gas Well Other

2. Name of Operator
Ridgeway Arizona Oil Corporation

3. Address of Operator
PO Box 1110, St. Johns, AZ 85936

4. Well Location
Unit Letter **F** : **1980** feet from the **N** line and **1980** feet from the **W** line
Section **33** Township **07S** Range **33E** NMPM County **Roosevelt**

11. Elevation (Show whether DR, RKB, RT, GR, etc.)
4428 DF

12. Check Appropriate Box to Indicate Nature of Notice, Report or Other Data

NOTICE OF INTENTION TO:

- PERFORM REMEDIAL WORK
- TEMPORARILY ABANDON
- PULL OR ALTER CASING
- DOWNHOLE COMMINGLE
- CLOSED-LOOP SYSTEM
- OTHER:
- PLUG AND ABANDON
- CHANGE PLANS
- MULTIPLE COMPL

SUBSEQUENT REPORT OF:

- REMEDIAL WORK
- COMMENCE DRILLING OPNS.
- CASING/CEMENT JOB
- OTHER:
- ALTERING CASING
- P AND A

13. Describe proposed or completed operations. (Clearly state all pertinent details, and give pertinent dates, including estimated date of starting any proposed work). SEE RULE 19.15.7.14 NMAC. For Multiple Completions: Attach wellbore diagram of proposed completion or recompletion.

JMR Services, LLC respectfully proposes the attached NOI to P&A this well on behalf of
Ridgeway Arizona Oil Corporation for the State of New Mexico.

Spud Date:

Rig Release Date:

I hereby certify that the information above is true and complete to the best of my knowledge and belief.

SIGNATURE *[Signature]* TITLE *Regulatory* DATE *3/31/26*

Type or print name _____ E-mail address: _____ PHONE: _____

APPROVED BY: _____ TITLE _____ DATE _____
Conditions of Approval (if any): _____

Proposed P&A Procedure
Ridgeway Arizona Oil Coporation/NMOCD
Haley Chaveroo SA Unit #014
30-041-10137

Note: All Cement is Class C mixed at 14.8 ppg, yield 1.32 cu ft / sx. If WOC is required then we will use 2% Calcium Chloride in order to reduce the wait time to 4 hrs, Cement volumes are based on inside capacities + 50' excess and outside 100% excess in open hole.

Prior to MOL 24 hrs Notification is Required to Regulatory Agency (NMOCD in this case)

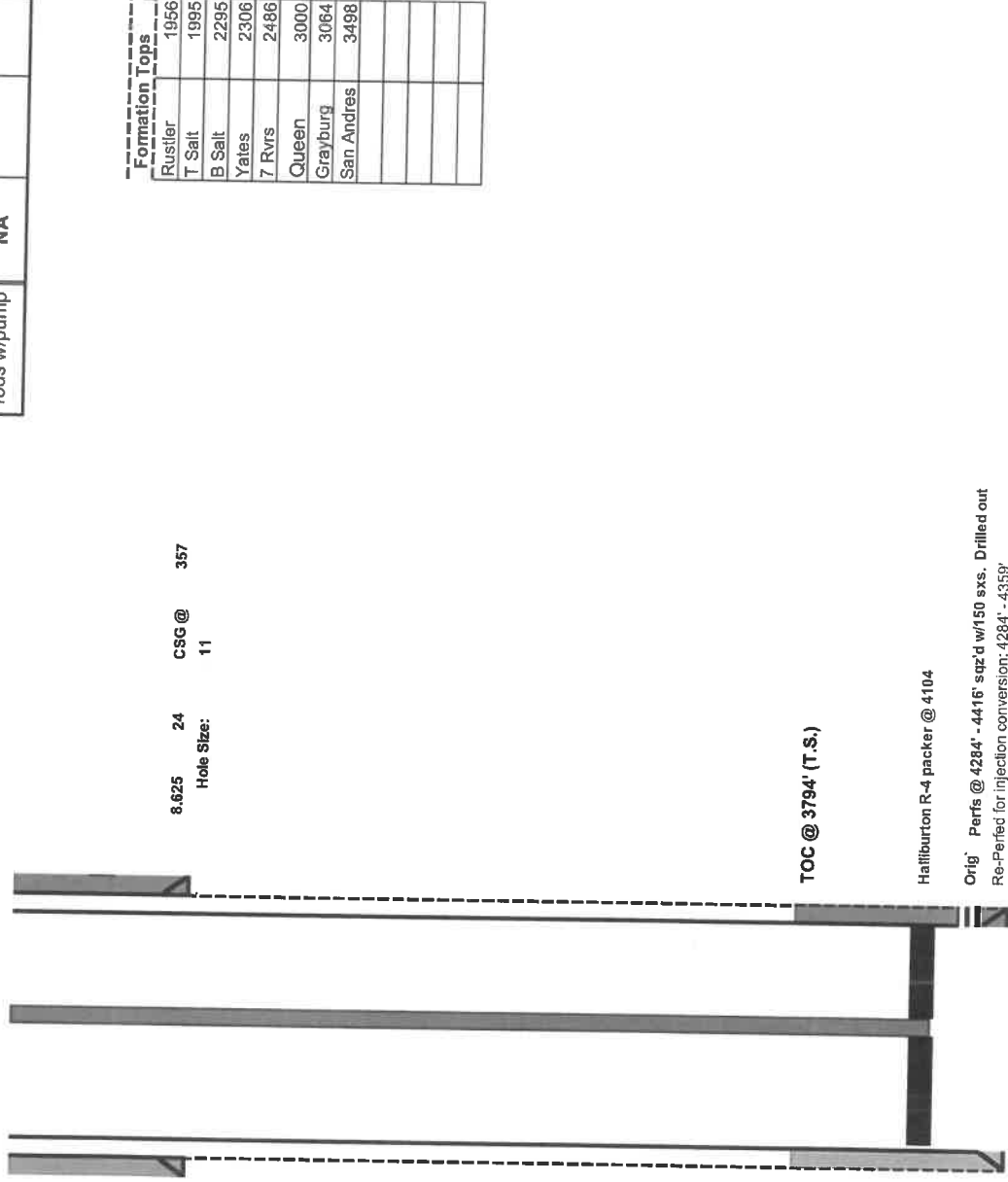
1. Hold pre-job meeting. Comply with all NMOCD, BLM along with Corporate and environmental regulations.
2. MIRU P&A rig and equipment.
3. Check and record tubing, casing and bradenhead pressures.
4. Remove existing piping from casing valve. Lay out relief lines to tanks and blow well down. Kill well if necessary. Ensure well is dead or on vacuum.
5. TOH and LD tubing. PU workstring.
6. ND WH. NU BOP and function test BOP.
7. Round trip gauge ring to 4234' or as deep as possible. If unable to get to 4234' then discuss with Regulatory for procedure change. RIH and set 4.5" CIBP @ 4234'. POH.
8. Pressure test casing to 500#. If casing does not test, then discuss with Regulatory for procedure change. If casing tests and MIRU wireline truck. Run CBL from CIBP to surface. Send an electronic copy of CBL to NMOCD representative. Results of CBL may change procedure. Record TOC per CBL on DWR.
9. PU tubing workstring and RIH. Drop ball valve down tubing and pressure test to 1000#.
10. Plug #1: (Perfs) Spot 11 sxs class "C" cmt, yield of 1.32 cf. BOC @ 4234' to TOC 4084'. If casing did not test and WOC and tag. If casing tested then continue on to Plug #2.
11. Plug #2 (San Andres) Perf @ 3548'. Mix 63 sxs Class C cement, yield 1.32cf. Squeeze 52 sxs outside casing and leave 11 sxs inside casing from BOC 3548' to TOC 3398'. WOC and tag. If cement tags low then contact Regulatory for procedure change.
11. Plug #3 (Grayburg/Queen) Perf @ 3114'. Mix 89 sxs Class C cement, yield 1.32cf. Squeeze 74 sxs outside casing and leave 15 sxs inside casing from BOC 3114' to TOC 2900'. WOC and tag. If cement tags low then contact Regulatory for procedure change.
12. Plug #4 (7Rvrs/Yates/Bsalt) Perf @ 2536'. Mix 141 sxs Class C cement, yield 1.32cf. Squeeze 118 sxs outside casing and leave 23 sxs inside casing from BOC 2536' to TOC 2195'. WOC and tag. If cement tags low then contact Regulatory for procedure change.
13. Plug #5 (Tsalt/Rustler) Perf @ 2045'. Mix 78 sxs Class C cement, yield 1.32cf. Squeeze 65 sxs outside casing and leave 13 sxs inside casing from BOC 2045' to TOC 1858'. WOC and tag. If cement tags low then contact Regulatory for procedure change.
14. Plug #6 (Csg Shoe/Surface) Perf @ 407'. Mix and pump 113 sxs Class C cement, yield 1.32cf from 407' to surface, circulate good cement out surface. TOH. Bubble test.
15. Contact Regulatory Representative to witness setting P&A marker. ND cementing valves and cut off wellhead. Test and record if gas is present. Top off annuli with cement if necessary. Record GPS coordinate for P&A marker on DWR. Photograph P&A marker in Place. RD and MOL.

Description	O.D.	Grade	Weight	Depth	Hole	Cmt Sx	TOC
Surface Csg	8.625		24	357	11	250	Circ
Prod Csg	4.5		10.5	4,460	7 7/8	250	3794'TS
Tubing w/ packer	2-3/8	J-55	4.7	4,104			
rods w/pump	NA						

Author: Well @ JMR
 Well Name: Haley Chaveroo SA Unit #014
 Field/Pool: Chaveroo San Andres
 County: Roosevelt
 State: New Mexico
 Spud Date: 7/6/65

API: 30-041-10137
 Location: Unit F 1980 FNL 1980 FWL
Sec. 33, T7S, R33E
4428

DF



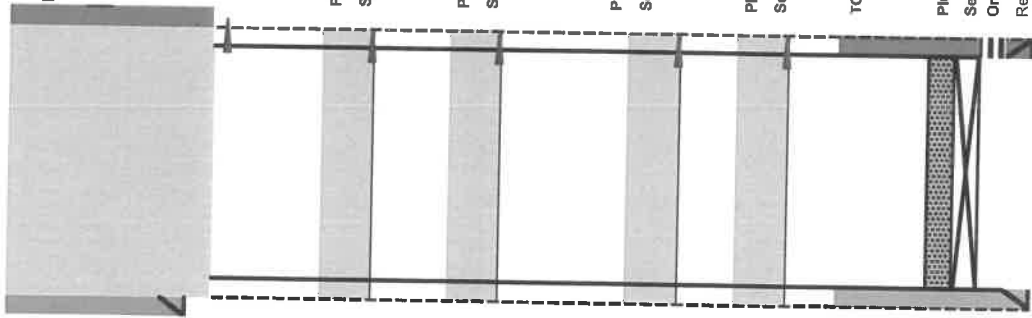
Formation Tops	Depth
Rustler	1956
T Salt	1995
B Salt	2295
Yates	2306
7 Rvrs	2486
Queen	3000
Grayburg	3064
San Andres	3498

TOC @ 3794' (T.S.)

Halliburton R-4 packer @ 4104

Orig' Perfs @ 4284' - 4416' sqz'd w/150 exs. Drilled out
 Re-Perf'd for injection conversion: 4284' - 4359'
4.5 10.5 CSG @ 4,474
Hole Size: 7 7/8

Author: Neill @ JMR		Well Name: Halley Chaveroo SA Unit #014		API: 30-041-10737	
Field/Pool: Chaveroo San Andres		Location: Unit F 1980 FNL 1980 FWL		Sec. 33, T7S, R33E	
County: Roosevelt		DF		4428	
State: New Mexico		7/6/65			
Spud Date: 7/6/65					



Plug #6: (Csg Shoe / Surface) Mix 113 sxs Class "C" cmt yield 1.32cf, from 407' to surface; circulate good cement

8.625 24 CSG @ 357
Hole Size: 11
Perforate @ 407'

Plug #5: (Tsalt/Rustler) Mix 78 sxs Class "C" cmt yield 1.32cf, spot 13 sxs inside csg BOC @ 2045' to TOC @ 1858' (50' excess).
Squeeze 65 sxs (100% excess) from 2045' in annulus. WOC and Tag.
Perforate @ 2045'

Plug #4: (7Rvrs/Yates/Bsalt) Mix 141 sxs Class "C" cmt yield 1.32cf, spot 23 sxs inside csg BOC @ 2536' to TOC @ 2195' (50' excess).
Squeeze 118 sxs (100% excess) from 2536' in annulus. WOC and Tag.
Perforate @ 2536'

Plug 3: (Grayburg/Queen) Mix 89 sxs Class "C" cmt yield 1.32cf, spot 15 sxs inside csg BOC @ 3114' to TOC @ 2900' (50' excess).
Squeeze 74 sxs (100% excess) from 3114' in annulus. WOC and Tag.
Perforate @ 3114'

Plug #2: (San Andres) Mix 63 sxs Class "C" cmt yield 1.32cf, spot 11 sxs inside csg BOC @ 3548' to TOC @ 3398' (50' excess).
Squeeze 52 sxs (100% excess) from 3548' in annulus. WOC and Tag.
Perforate @ 3548'

TOC @ 3794' (T.S.)

Plug #1: (perfs) Mix 11 sxs Class "C" cmt yield 1.32cf inside csg BOC @ 4234' to TOC @ 4084' (50' excess).
Set CIBP @ 4234'

Orig Perfs @ 4284' - 4416' sqz'd w/150 sxs. Drilled out
Re-Perfed for injection conversion: 4284' - 4359'

4.5 10.5 CSG @ 4,474
Hole Size: 7 7/8

Formation Tops	
Rustler	1956
T Salt	1995
B Salt	2295
Yates	2306
7 Rvrs	2486
Queen	3000
Grayburg	3064
San Andres	3498

Sante Fe Main Office
Phone: (505) 476-3441

General Information
Phone: (505) 629-6116

Online Phone Directory
<https://www.emnrd.nm.gov/ocd/contact-us>

State of New Mexico
Energy, Minerals and Natural Resources
Oil Conservation Division
1220 S. St Francis Dr.
Santa Fe, NM 87505

DEFINITIONS

Action 569770

DEFINITIONS

Operator: JMR SERVICES, LLC (OPG Vendor) 4706 Green Tree Blvd. Midland, TX 79707	OGRID: 333576
	Action Number: 569770
	Action Type: [UF-OMA] NOI Plug & Abandon Well (UF-OMA-C-103F)

DEFINITIONS

The OCD Mitigation Activity (OMA) forms are a subset of the OCD's forms exclusively designed for activities related to State of New Mexico's contracted evaluation, plugging, decommissioning, remediation, salvage and reclamation activities. Specifically, these forms are typically used where the OCD has acquired a hearing order allowing the OCD to perform mitigation activities on wells and associated facilities that no longer have an authorized or viable operator to perform the necessary work. These forms are not to be utilized for any other purpose.

Sante Fe Main Office
Phone: (505) 476-3441

General Information
Phone: (505) 629-6116

Online Phone Directory
<https://www.emnrd.nm.gov/ocd/contact-us>

State of New Mexico
Energy, Minerals and Natural Resources
Oil Conservation Division
1220 S. St Francis Dr.
Santa Fe, NM 87505

QUESTIONS

Action 569770

QUESTIONS

Operator: JMR SERVICES, LLC (OPG Vendor) 4706 Green Tree Blvd. Midland, TX 79707	OGRID: 333576
	Action Number: 569770
	Action Type: [UF-OMA] NOI Plug & Abandon Well (UF-OMA-C-103F)

QUESTIONS

Prerequisites	
[OGRID] Well Operator	[164557] RIDGEWAY ARIZONA OIL CORP.
[API] Well Name and Number	[30-041-10137] HALEY CHAVEROO SA UNIT #014
Well Status	Active

Sante Fe Main Office
Phone: (505) 476-3441

General Information
Phone: (505) 629-6116

Online Phone Directory
<https://www.emnrd.nm.gov/ocd/contact-us>

State of New Mexico
Energy, Minerals and Natural Resources
Oil Conservation Division
1220 S. St Francis Dr.
Santa Fe, NM 87505

CONDITIONS

Action 569770

CONDITIONS

Operator: JMR SERVICES, LLC (OPG Vendor) 4706 Green Tree Blvd. Midland, TX 79707	OGRID: 333576
	Action Number: 569770
	Action Type: [UF-OMA] NOI Plug & Abandon Well (UF-OMA-C-103F)

CONDITIONS

Created By	Condition	Condition Date
loren.diede	Notify NMOCD 24 hours prior to beginning P&A operations.	4/6/2026
loren.diede	NMOCD has determined that this well is in the LPCH restricted area and that a below-ground P&A marker will be required.	4/6/2026