

Submit 1 Copy To Appropriate District Office
District I - (575) 393-6161
1625 N. French Dr., Hobbs, NM 88240
District II - (575) 748-1283
811 S. First St., Artesia, NM 88210
District III - (505) 334-6178
1000 Rio Brazos Rd., Aztec, NM 87410
District IV - (505) 476-3460
1220 S. St. Francis Dr., Santa Fe, NM 87505

State of New Mexico
Energy, Minerals and Natural Resources

Form C-103
Revised July 18, 2013

OIL CONSERVATION DIVISION
1220 South St. Francis Dr.
Santa Fe, NM 87505

WELL API NO. 30-015-00721
5. Indicate Type of Lease STATE [X] FEE []
6. State Oil & Gas Lease No. B-9299
7. Lease Name or Unit Agreement Name South Red Lake 11 Unit
8. Well Number 36
9. OGRID Number 330522
10. Pool name or Wildcat RED LAKE GRAYBURG
11. Elevation (Show whether DR, RKB, RT, GR, etc.) 3620' GL

SUNDRY NOTICES AND REPORTS ON WELLS
(DO NOT USE THIS FORM FOR PROPOSALS TO DRILL OR TO DEEPEN OR PLUG BACK TO A DIFFERENT RESERVOIR. USE "APPLICATION FOR PERMIT" (FORM C-101) FOR SUCH PROPOSALS.)
1. Type of Well: Oil Well [X] Gas Well [] Other []
2. Name of Operator Apache Corporation
3. Address of Operator 303 Veterans Airpark Lane, Ste. 3000, Midland, Tx 79705
4. Well Location Unit Letter A; 330 feet from the NORTH line and 990 feet from the EAST line
Section 02 Township 18S Range 27E NMPM County Eddy

12. Check Appropriate Box to Indicate Nature of Notice, Report or Other Data

NOTICE OF INTENTION TO:
PERFORM REMEDIAL WORK [] PLUG AND ABANDON []
TEMPORARILY ABANDON [] CHANGE PLANS []
PULL OR ALTER CASING [] MULTIPLE COMPL []
DOWNHOLE COMMINGLE []
CLOSED-LOOP SYSTEM []
OTHER: []
SUBSEQUENT REPORT OF:
REMEDIATION WORK [] ALTERING CASING []
COMMENCE DRILLING OPNS. [] P AND A [X]
CASING/CEMENT JOB []
OTHER: []

13. Describe proposed or completed operations. (Clearly state all pertinent details, and give pertinent dates, including estimated date of starting any proposed work). SEE RULE 19.15.7.14 NMAC. For Multiple Completions: Attach wellbore diagram of proposed completion or recompletion.

- 1. 03/23/26 Notified OCD on MI P&A equipment.
2. 03/24/26 Notify OCD discuss w/Loren Decinen to spot 50 sx class C cmt @ 1275', tag @ 1080'. Circ MLF 1080'-surf.
3. 03/30/26 Spot 40 sx class C cmt @ 790'.
4. 03/31/26 Tag TOC @ 748'. Notify OCD w/Loren discuss perf @ 747'. Perf @ 747' M&P 25 sx class C cmt, tag @ 748'. Notify OCD w/Loren discuss sqz 25 sx class C cmt @ 747'.
5. 04/01/26 Tag TOC @ 748'. Notify OCD w/Loren discuss sqz 25 sx class C cmt @ 747', tag @ 748', confirm tag w/Loren OCD discuss leak decided spot 35 sx class C cmt @ 748'-550'.
6. 04/02/26 Tag TOC @ 553'. Notify OCD w/Loren discuss sqz 60 sx class C cmt csg leak @ 553'-320', tag @ 312'.
7. 04/06/26 Sqz 100 sx class C cmt from 300'-0' on 7" csg, tag @ surf, cut off well head, back free location, P&A complete.
8. 04/06/26 RU wellhead cutoff crew. Cutoff wellhead and anchors. Install dry hole marker.
9. 04/10/26 Submit paperwork to NMOCD.

NOTE: Apache Corporation is submitting the following P&A C-103P on behalf of Acacia Operating, LLC. OGRID# 330522

Spud Date: 10/21/1941 Rig Release Date:

I hereby certify that the information above is true and complete to the best of my knowledge and belief.

SIGNATURE [Signature] TITLE Agent DATE 04/07/26
Type or print name Jimmy Bagley E-mail address: sunsetwellservice@yahoo.com PHONE: 432-561-8600
For State Use Only

APPROVED BY: TITLE DATE
Conditions of Approval (if any):

AUTHORIZED BY: Donna Thompson, Apache P&A Tech II
DATE: 4/10/2026

Apache Corporation
South Red Lake II Unit #036
30-015-00721

- 3/23/26** MIRU P&A equipment.
- 3/24/26** Attempted to RIH w/7" CIBP, no luck due to collapsed csg. Contacted Loren @NMOCD. Recv'd permission to spot 50 sxs Class "C" cmt. Plug (#1) Spot (50 sxs) Class "C" cmt from 1275'-1075', csg size 7", tag TOC @1080'.
- 3/25/26** Attempted to dig around wellhead w/backhoe. Could not break rock around wellhead. Waited on trac hoe and jack hammer to arrive.
- 3/26/26** Broke rock around wellhead, found good 7" csg @15' from surface. Cutoff bad csg @15'. Welded & brought up new csg to surface.
- 3/27/26** Cover up hole around wellhead. MIRU WL and ran CBL.
- 3/30/26** RIH w/7" PLR, isolated hole in csg located @740'-770', found hole @ 0'-30' from surface. Recv'd perm from OCD to spot cmt @790'-650'. Plug (#2) Spot (40 sxs) Class "C" cmt from 790'-650', csg size 8 1/4".
- 3/31/26** Tag TOC @748'. Confirm tag w/OCD. Tested dn to TOC @748'. 500# held good, rlse pkr & isolate hole in csg. Located hole @263'-293'. Notified OCD of tag depth, recv'd perm to Perf @747 with more cmt. Add to Plug (#2) Sqz (50 sxs) Class "C" cmt from 757'-650', csg size 8 1/4".
- 4/1/26** Tag TOC @748'. Notified OCD (Loren) given perm to add 25 sxs to Plug #2. Sqz 25 sxs Class "C" cmt from 747'-650'. Tag TOC @748'. Had slow leak, pull pkr up to 500', set pkr and test dn to TOC, no good. Isolated hole found @553'-618'. Confirm tag with Loren (NMOCD). Discussed spotting 35 sxs Class "C" cmt from 748'-550'.
- 4/2/26** Add to Plug (#2) Spot 35 sxs Class "C" cmt from 748'-550', csg 8 1/4". Tag TOC @553', good tag. Confirm tag with OCD. Plug (#3) Sqz (60 sxs) Class "C" cmt from 553'-320', csg size 8 5/8". Tag TOC @312'.
- 4/6/26** Plug (#4) Sqz (100 sxs) Class "C" cmt from 300'-0', csg size 12 1/4", cmt @ surface. P&A complete. RDMO
- 4/6/26** RU wellhead cutoff crew. Cutoff wellhead and anchors. Install dry hole marker.
- 4/10/26** Submit paperwork to NMOCD.

NOTE: Apache Corporation is submitting the following P&A C-103P on behalf of Acacia Operating, LLC. OGRID# 330522

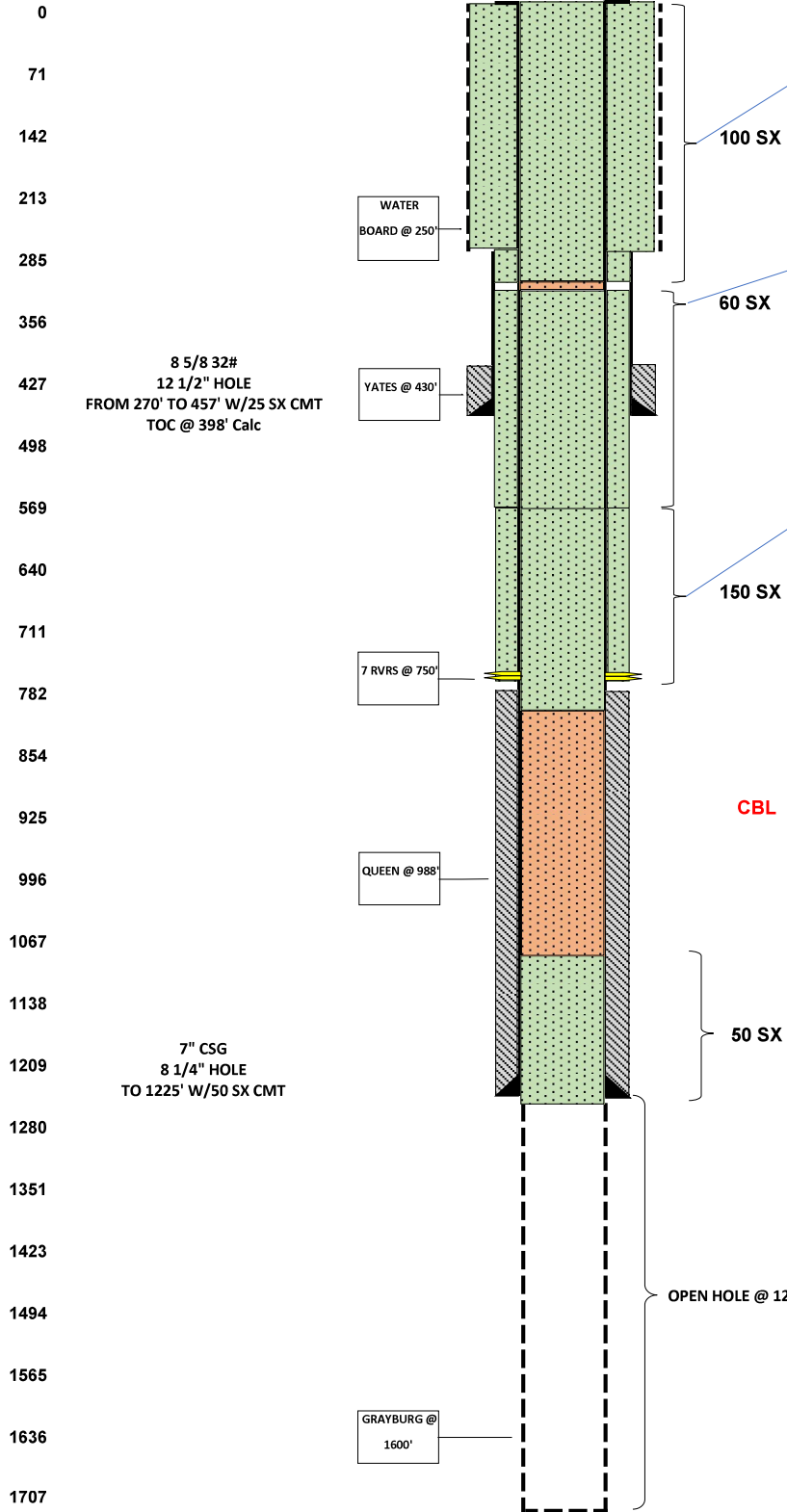


LEASE NAME South Red Lake II Unit
 WELL # 36
 API # 30-015-00721
 COUNTY Eddy, NM
FINAL P&A WB DIAGRAM

WELL BORE INFO.

FORM TOPS 30-015-00721

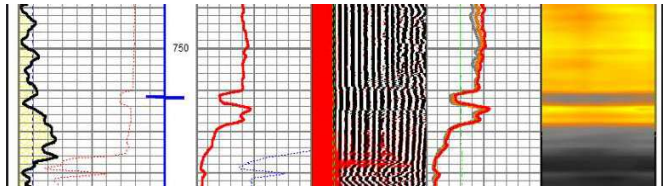
DEPTH SX/CMT



PLUG #4
 4/6/2026 DISCUSS W/OCD SET PKR @ 260' & SQZ'D 100 SX CLASS "C" CMT FROM 300' TO SURF OUTSIDE 7" CSG, RELEASE PKR & FILLED UP. RDMO, CUT OFF WH, INSTALL DRYHOLE MARKER, CLEAN LOCATION. TURN OVER TO RECLAMATION.

PLUG #3
 4/2/2026 DISCUSS W/OCD SET PKR @ 300' & SQZ'D 60 SX CLASS "C" CMT FROM 553'-330'. WOC TAG. TAGGED TOC @ 312'. NOTIFIED OCD.

PLUG #2
 3/30/2026 TESTED CSG PUH & SPOTTED 40 SX CLASS "C" CMT FROM 790'-650'. WOC/TAG
 3/31/2025 TAGGED TOC @ 748'. DISCUSSED W/LOREN @ OCD & PERF'D @ 747' & SQZ'D 25 SX CLASS "C" CMT FROM 747'-650'. WOC/TAG. TAGGED TOC @ 748' DISCUSSED W/OCD & SQZ'D 25 SX CLASS "C" CMT FROM 747'-650'. WOC/TAG
 4/1/2026 TAGGED TOC @ 748' DISCUSS W/OCD PUMPED 5 SX LCM & SQZ'D 25 SX CLASS "C" CMT 747'-650' WOC/TAG. TAGGED TOC @ 748'. DISCUSS W/OCD & SPOTTED 35 SX CLASS "C" CMT FROM 748'-550' WOC/TAG.
 4/2/2026 TAGGED TOC @ 553'. NOTIFIED OCD.



PLUG #1
 3/23/2026 MIRU P&A RIG. POOH & LD RODS & PUMP.
 3/24/2026 POOH & LD TBG. COULD NOT RIH W/CIBP DUE TO COLAPSED CSG. OK'D W/LOREN @ OCD RIH OPEN ENDED AND SPOTTED 50 SX CLASS "C" CMT @ 1275'-1075'. WOC/TAG. TAGGED TOC @ 1080' & CONFIRMED W/OCD. CIRC'D MLF. RD AND DUG OUT WH TO REPAIR 7" CSG & WH.
 3/27/2026 RIH W/WL AND RAN CBL FROM 1080' TO SURF. SEND RESULTS TO NMOCD. BACK FILL AROUND WH & SDFWE





Sante Fe Main Office
Phone: (505) 476-3441

General Information
Phone: (505) 629-6116

Online Phone Directory
<https://www.emnrd.nm.gov/ocd/contact-us>

State of New Mexico
Energy, Minerals and Natural Resources
Oil Conservation Division
1220 S. St Francis Dr.
Santa Fe, NM 87505

CONDITIONS

Action 573887

CONDITIONS

Operator: APACHE CORPORATION 303 Veterans Airpark Ln Midland, TX 79705	OGRID: 873
	Action Number: 573887
	Action Type: [C-103P] Sub. Plugging (C-103P)

CONDITIONS

Created By	Condition	Condition Date
loren.diede	None	4/14/2026