

District I
1625 N. French Dr., Hobbs, NM 88240
District II
811 S. First St., Artesia, NM 88210
District III
1000 Rio Brazos Rd., Aztec, NM 87410
District IV
1220 S. St. Francis Dr., Santa Fe, NM 87505

State of New Mexico
Energy, Minerals & Natural
Resources

Form C-104
Revised August 1, 2011

Submit one copy to appropriate District Office

Oil Conservation Division
1220 South St. Francis Dr.

AMENDED REPORT

I. REQUEST FOR ALLOWABLE MINDS AUTHORIZATION TO TRANSPORT

¹ Operator name and Address EOG RESOURCES INC PO BOX 2267 MIDLAND, TEXAS 79702		² OGRID Number 7377
		³ Reason for Filing Code/ Effective Date NW 11/30/2022
⁴ API Number 30 - 015-49541	⁵ Pool Name PURPLE SAGE; WOLFCAMP (GAS)	⁶ Pool Code 98220
⁷ Property Code 332869	⁸ Property Name MIDNIGHT HOUR 11 FEDERAL COM	⁹ Well Number 704H

II. ¹⁰ Surface Location

Ul or lot no.	Section	Township	Range	Lot Idn	Feet from the	North/South Line	Feet from the	East/West line	County
H	11	26S	30E		2572'	NORTH	1306'	EAST	EDDY

¹¹ Bottom Hole Location

UL or lot no.	Section	Township	Range	Lot Idn	Feet from the	North/South line	Feet from the	East/West line	County
P	14	26S	30E		341'	SOUTH	757'	EAST	EDDY
¹² Lse Code	¹³ Producing Method Code FLOWING	¹⁴ Gas Connection Date	¹⁵ C-129 Permit Number	¹⁶ C-129 Effective Date	¹⁷ C-129 Expiration Date				

III. Oil and Gas Transporters

¹⁸ Transporter OGRID	¹⁹ Transporter Name and Address	²⁰ O/G/W
372812	EOGRM	OIL
151618	ENTERPRISE FIELD SERVICES	GAS
298751	REGENCY FIELD SERVICES	GAS
36785	DCP MIDSTREAM	GAS

IV. Well Completion Data

²¹ Spud Date 07/12/2022	²² Ready Date 11/30/2022	²³ TD 18,528'	²⁴ PBDT 18,505'	²⁵ Perforations 11,254 - 18,505'	²⁶ DHC, MC
²⁷ Hole Size	²⁸ Casing & Tubing Size	²⁹ Depth Set	³⁰ Sacks Cement		
12 1/4"	9 5/8"	1139'	900 SXS CL C/CIRC		
8 3/4"	7 5/8"	10,606'	1829 SXS CL C&H/CIRC		
6 3/4"	5 1/2"	18,513'	885 SXS CL H TOC 8960' CBL		

V. Well Test Data

³¹ Date New Oil 11/30/2022	³² Gas Delivery Date 11/30/2022	³³ Test Date 12/08/2022	³⁴ Test Length 24 HRS	³⁵ Tbg. Pressure	³⁶ Csg. Pressure 1483
³⁷ Choke Size	³⁸ Oil 3917	³⁹ Water 8303	⁴⁰ Gas 16,592		⁴¹ Test Method

⁴² I hereby certify that the rules of the Oil Conservation Division have been complied with and that the information given above is true and complete to the best of my knowledge and belief. Signature: Kay Maddox Printed name: Kay Maddox Title: SENIOR REGULATORY SPECIALIST E-mail Address: kay_maddox@eogresources.com Date: 01/09/2023 Phone: 432-638-8475	OIL CONSERVATION DIVISION	
	Approved by:	
	Title:	
	Approval Date:	

DISTRICT I
1625 N. French Dr., Hobbs, NM 88240
Phone: (575) 393-6161 Fax: (575) 393-0720
DISTRICT II
811 S. First St., Artesia, NM 88210
Phone: (575) 748-1283 Fax: (575) 748-9720
DISTRICT III
1000 Rio Brazos Rd., Aztec, NM 87410
Phone: (505) 334-6178 Fax: (505) 334-6170
DISTRICT IV
1220 S. St. Francis Dr., Santa Fe, NM 87505
Phone: (505) 476-3460 Fax: (505) 476-3462

State of New Mexico
Energy, Minerals & Natural Resources Department
OIL CONSERVATION DIVISION
1220 South St. Francis Dr.
Santa Fe, New Mexico 87505

As-Completed Plat
Revised August 1, 2011
Submit one copy to appropriate
District Office
 AMENDED REPORT

AS-COMPLETED PLAT

API Number 30-015- 49541	Pool Code 98220	Pool Name PURPLE SAGE; WOLFCAMP (GAS)
Property Code 332869	Property Name MIDNIGHT HOUR 11 FED COM	Well Number 704H
OGRID No. 7377	Operator Name EOG RESOURCES, INC.	Elevation 3188'

Surface Location

UL or lot no.	Section	Township	Range	Lot Idn	Feet from the	North/South line	Feet from the	East/West line	County
H	11	26 S	30 E		2572	NORTH	1306	EAST	EDDY

Bottom Hole Location If Different From Surface

UL or lot no.	Section	Township	Range	Lot Idn	Feet from the	North/South line	Feet from the	East/West line	County
P	14	26 S	30 E		341	SOUTH	757	EAST	EDDY
Dedicated Acres 960.00	Joint or Infill	Consolidated Code	Order No.						

No allowable will be assigned to this completion until all interests have been consolidated or a non-standard unit has been approved by the division.

SURFACE LOCATION
NEW MEXICO EAST
NAD 1983
X = 691839'
Y = 385011'
LAT. = N 32.057544°
LONG. = W 103.847524°
NAD 1927
X = 6506653'
Y = 384953'
LAT. = N 32.057419°
LONG. = W 103.847046°

KICK OFF POINT
NEW MEXICO EAST
NAD 1983
X = 692333'
Y = 384843'
LAT. = N 32.057076°
LONG. = W 103.845934°
NAD 1927
X = 651147'
Y = 384785'
LAT. = N 32.056951°
LONG. = W 103.845456°
MD. = 10,646'

FIRST TAKE POINT
NEW MEXICO EAST
NAD 1983
X = 692368'
Y = 384537'
LAT. = N 32.056235°
LONG. = W 103.845824°
NAD 1927
X = 651182'
Y = 384480'
LAT. = N 32.056110°
LONG. = W 103.845346°
MD. = 11,254'

BOTTOM HOLE LOCATION
NEW MEXICO EAST
NAD 1983
X = 692422'
Y = 377282'
LAT. = N 32.036290°
LONG. = W 103.845757°
NAD 1927
X = 651235'
Y = 377224'
LAT. = N 32.036165°
LONG. = W 103.845280°
MD. = 18,528'

LAST TAKE POINT
NEW MEXICO EAST
NAD 1983
X = 692422'
Y = 377305'
LAT. = N 32.036354°
LONG. = W 103.845754°
NAD 1927
X = 651236'
Y = 377248'
LAT. = N 32.036229°
LONG. = W 103.845277°
MD. = 18,505'

POINT UTM ZONE 13 COORDINATES
SHL X=1997947.2 Y=11638411.2
KOP X=1997841.7 Y=11638246.3
FTP X=1997879.0 Y=11637940.8
LTP X=1997978.0 Y=11630710.5
BHL X=1997977.3 Y=11630687.2

OPERATOR CERTIFICATION

I hereby certify that the information contained herein is true and complete to the best of my knowledge and belief, and that this organization either owns a working interest or unleased mineral interest in the land including the proposed bottom hole location or has a right to drill this well at this location pursuant to a contract with an owner of such a mineral or working interest, or to voluntary pooling agreement or a compulsory pooling order heretofore entered by the division.

Kay Maddox 12/19/2022
Signature Date

KAY MADDOX
Print Name

KAY.MADDOX@EOGRESOURCES.COM
E-mail Address

SURVEYORS CERTIFICATION

I hereby certify that the well location shown on this plat was plotted from field notes of actual surveys made by me or under my supervision, and that the same is true and correct to the best of my belief.

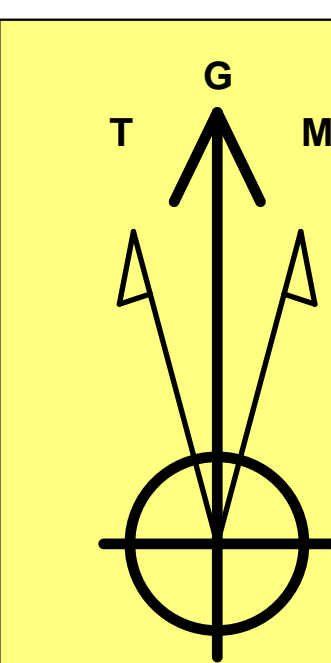
MAY 24, 2022
Date of Survey

Job No.: **EOG.B190049**
BRANDON A. MOSER, N.M.P.L.S.
Certificate Number 22502



PROJECT DETAILS: Eddy County, NM (NAD 83 NME)

Geodetic System: US State Plane 1983
 Datum: North American Datum 1983
 Ellipsoid: GRS 1980
 Zone: New Mexico Eastern Zone
 System Datum: Mean Sea Level



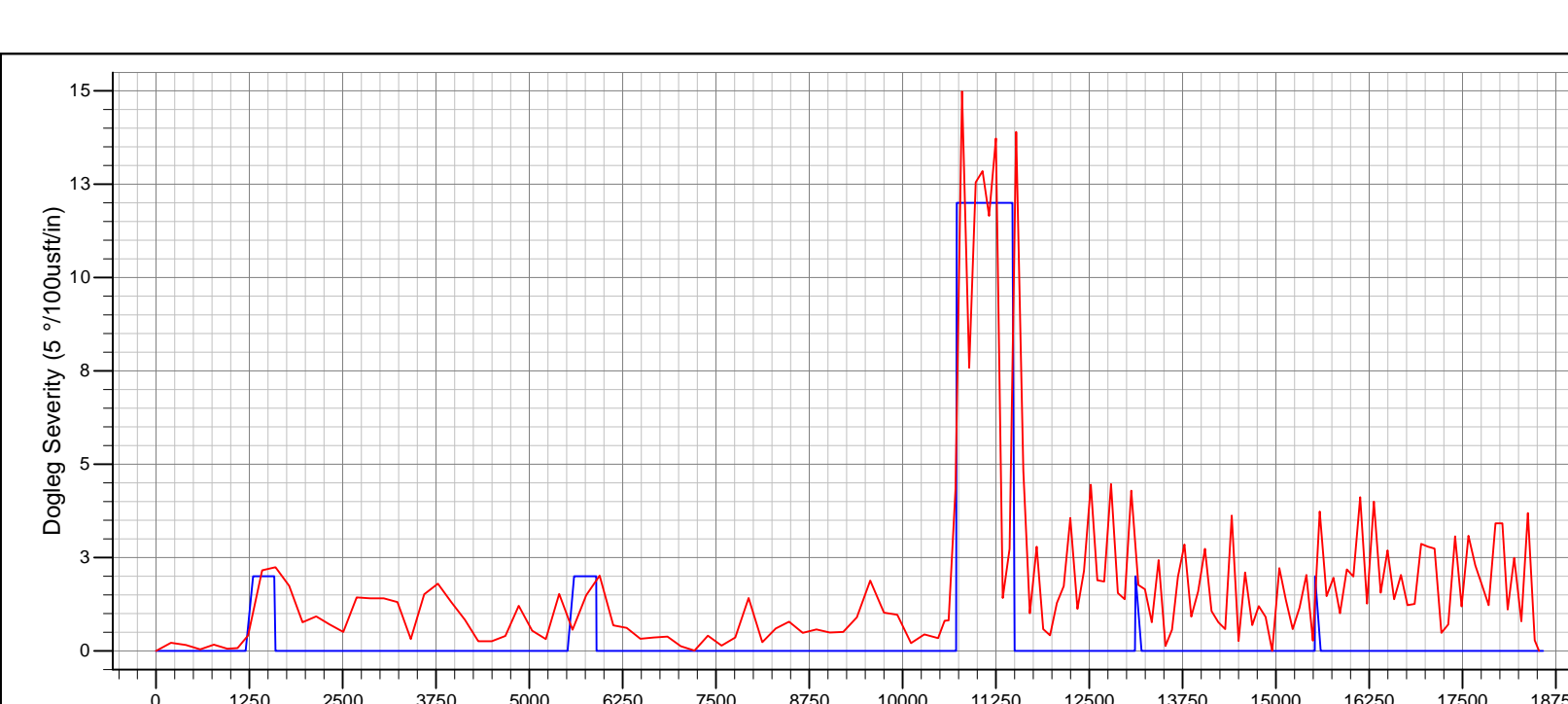
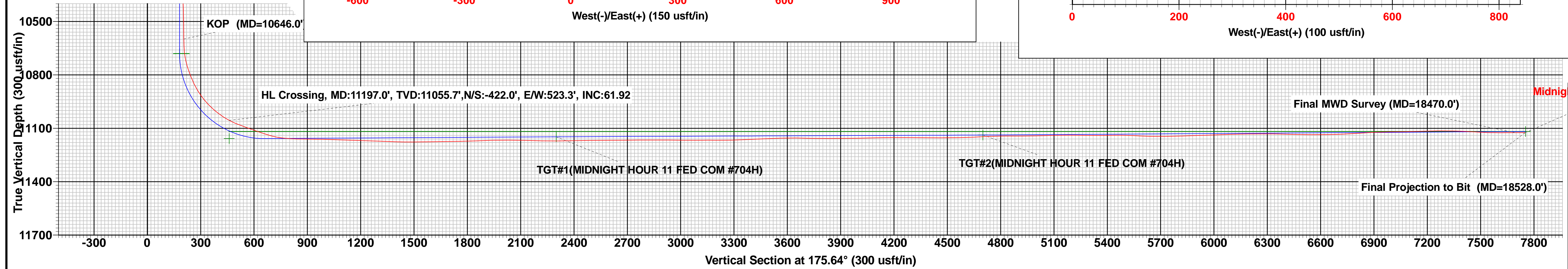
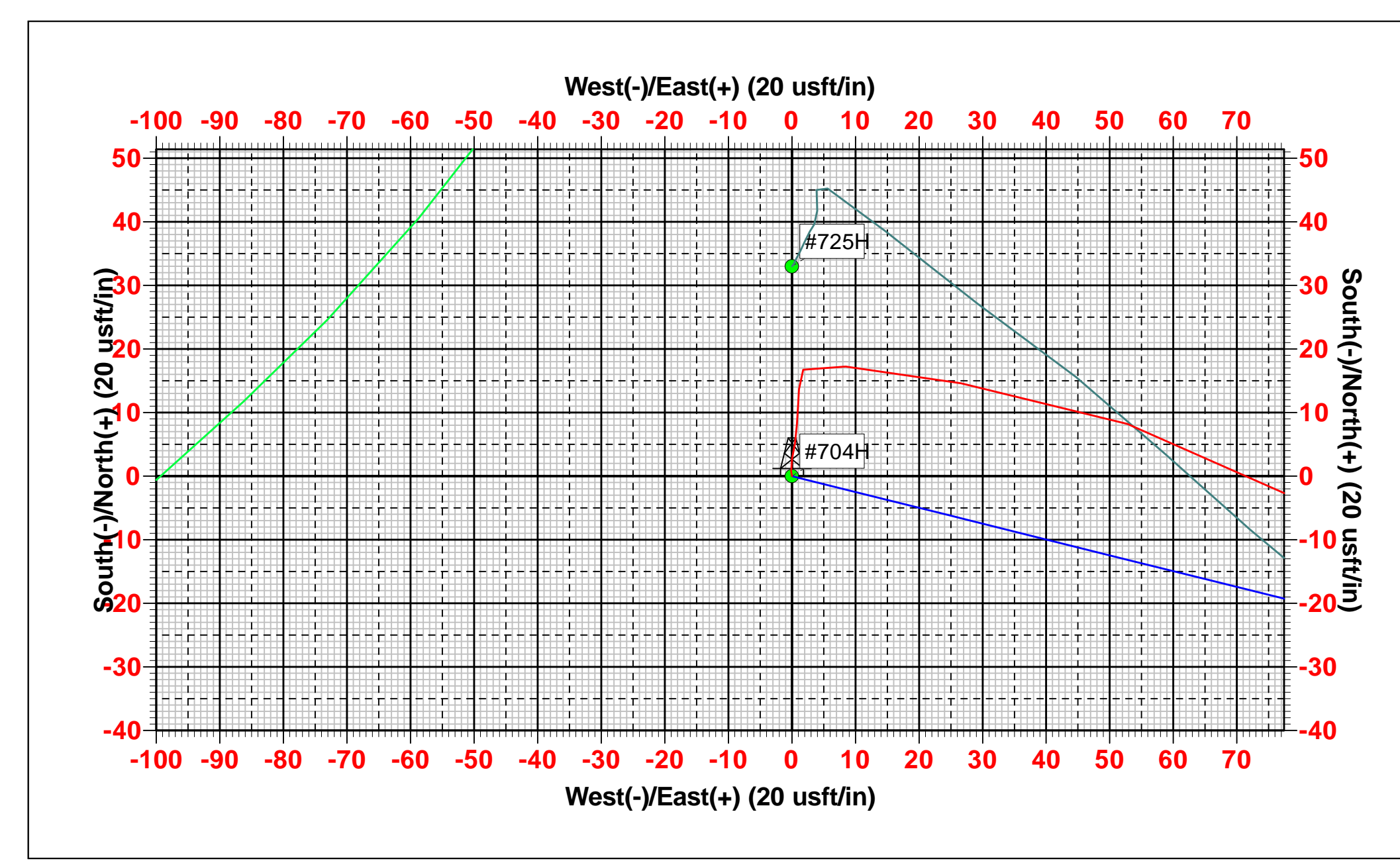
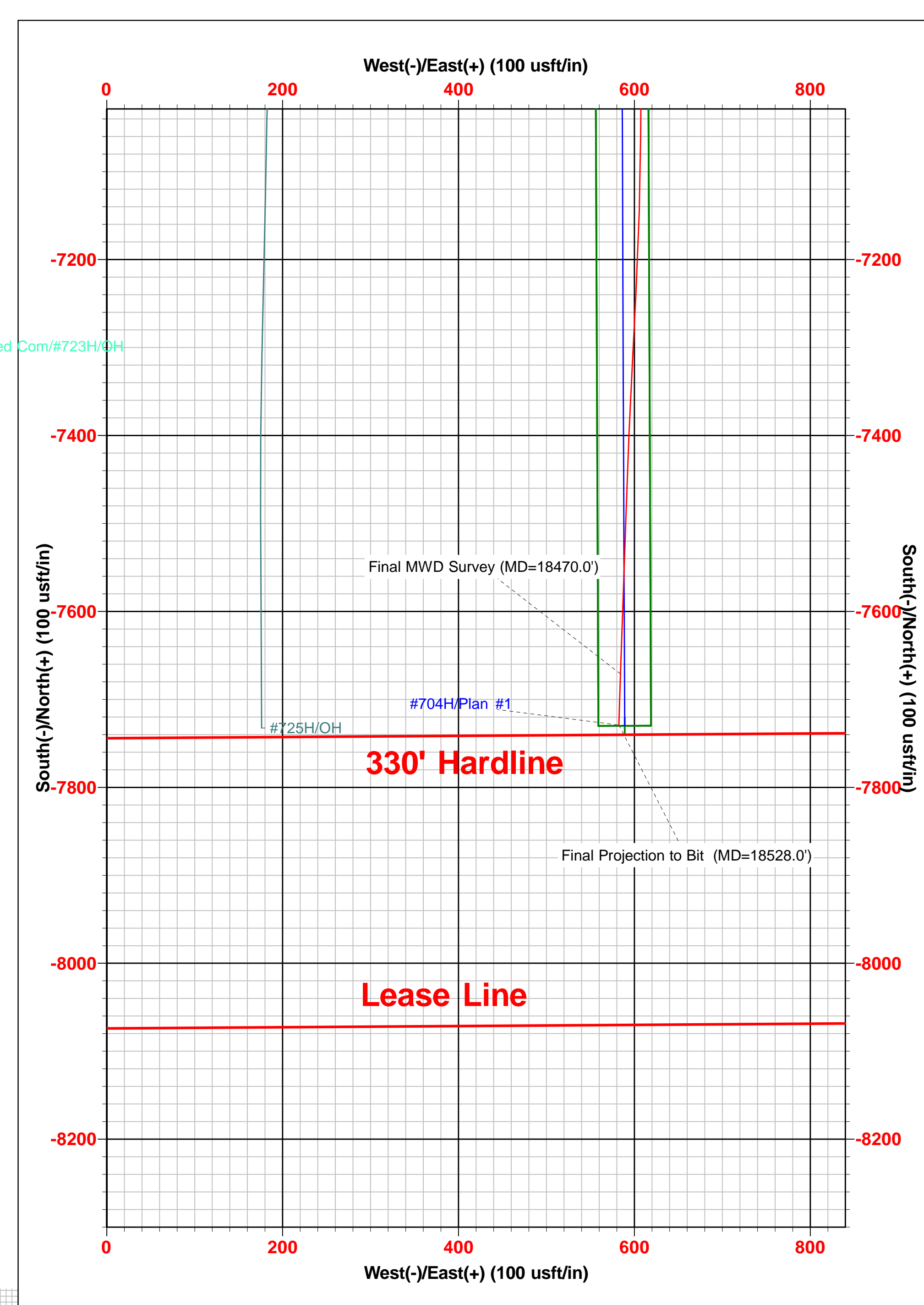
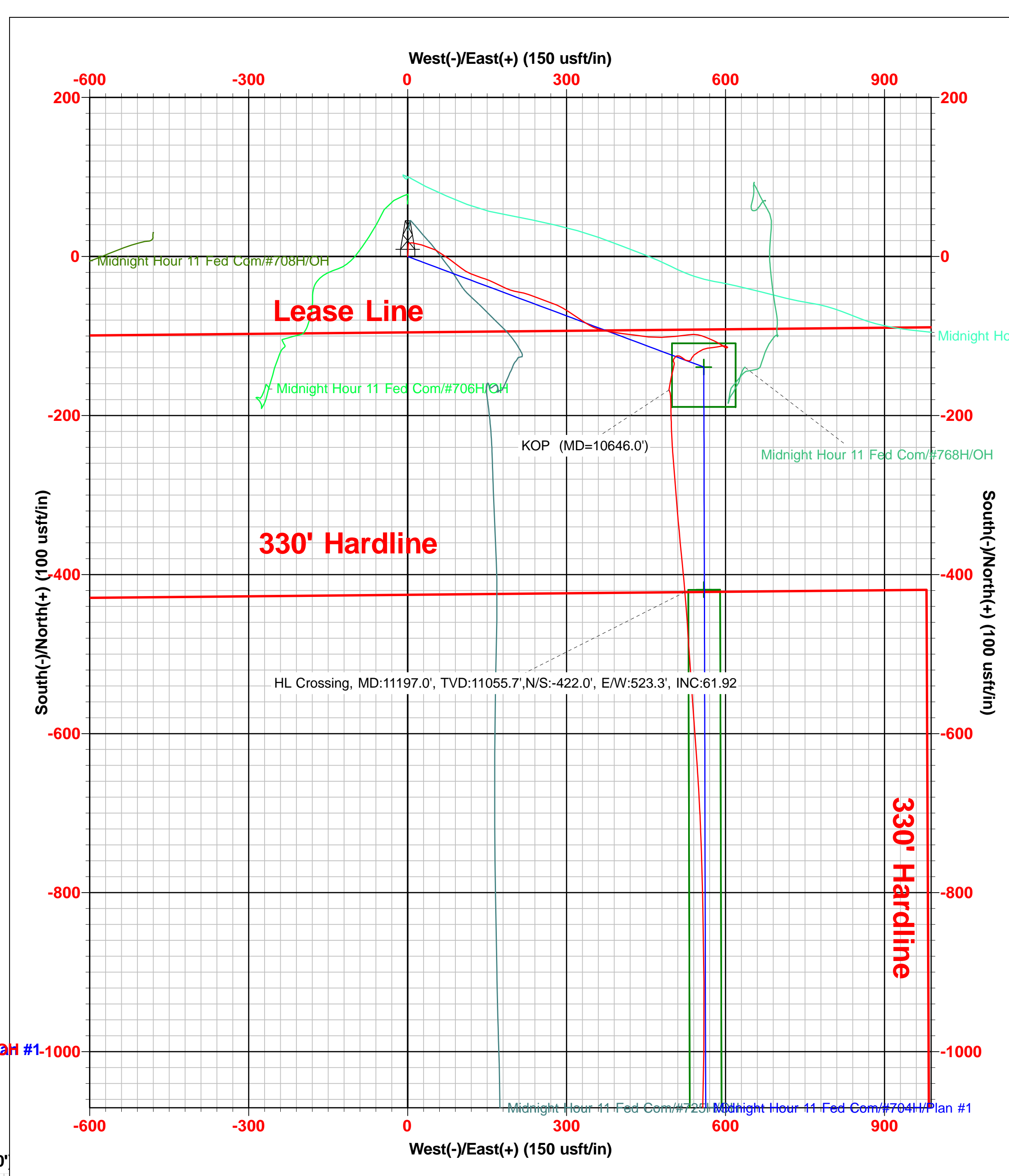
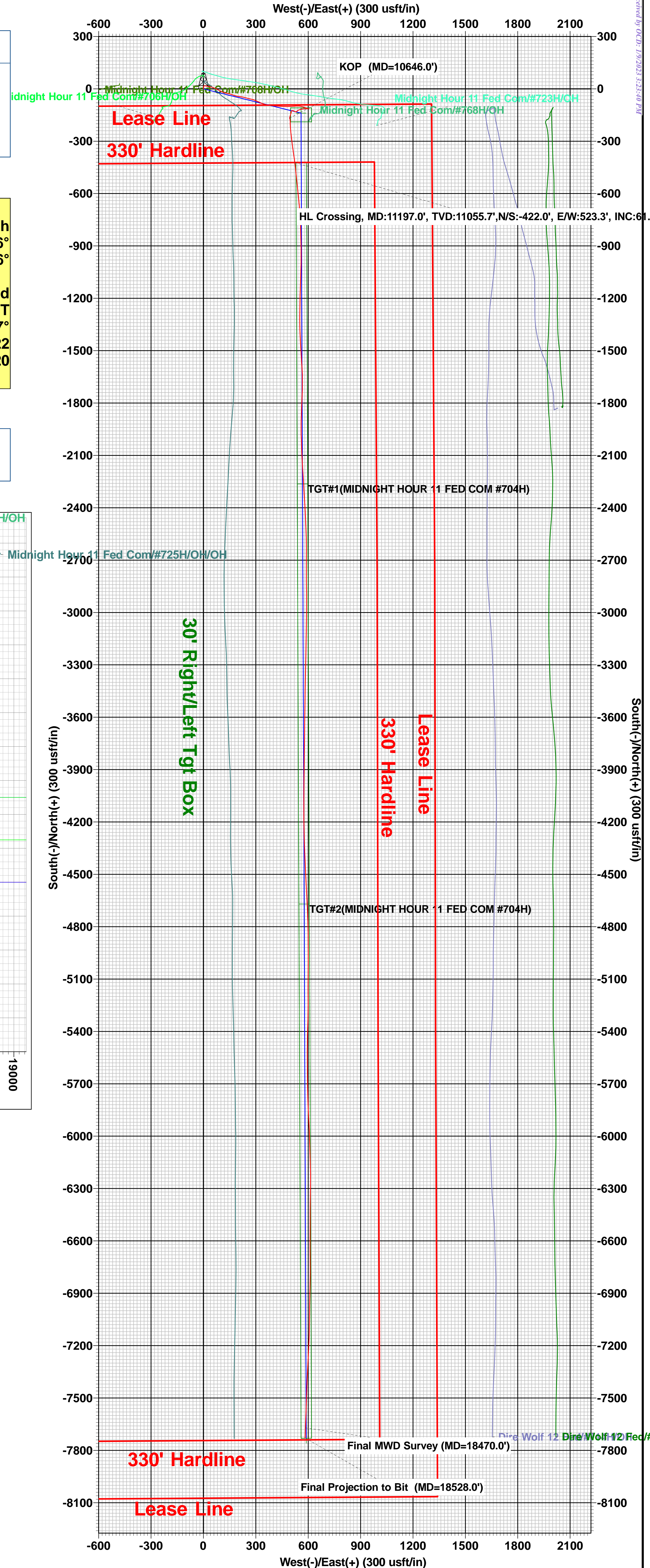
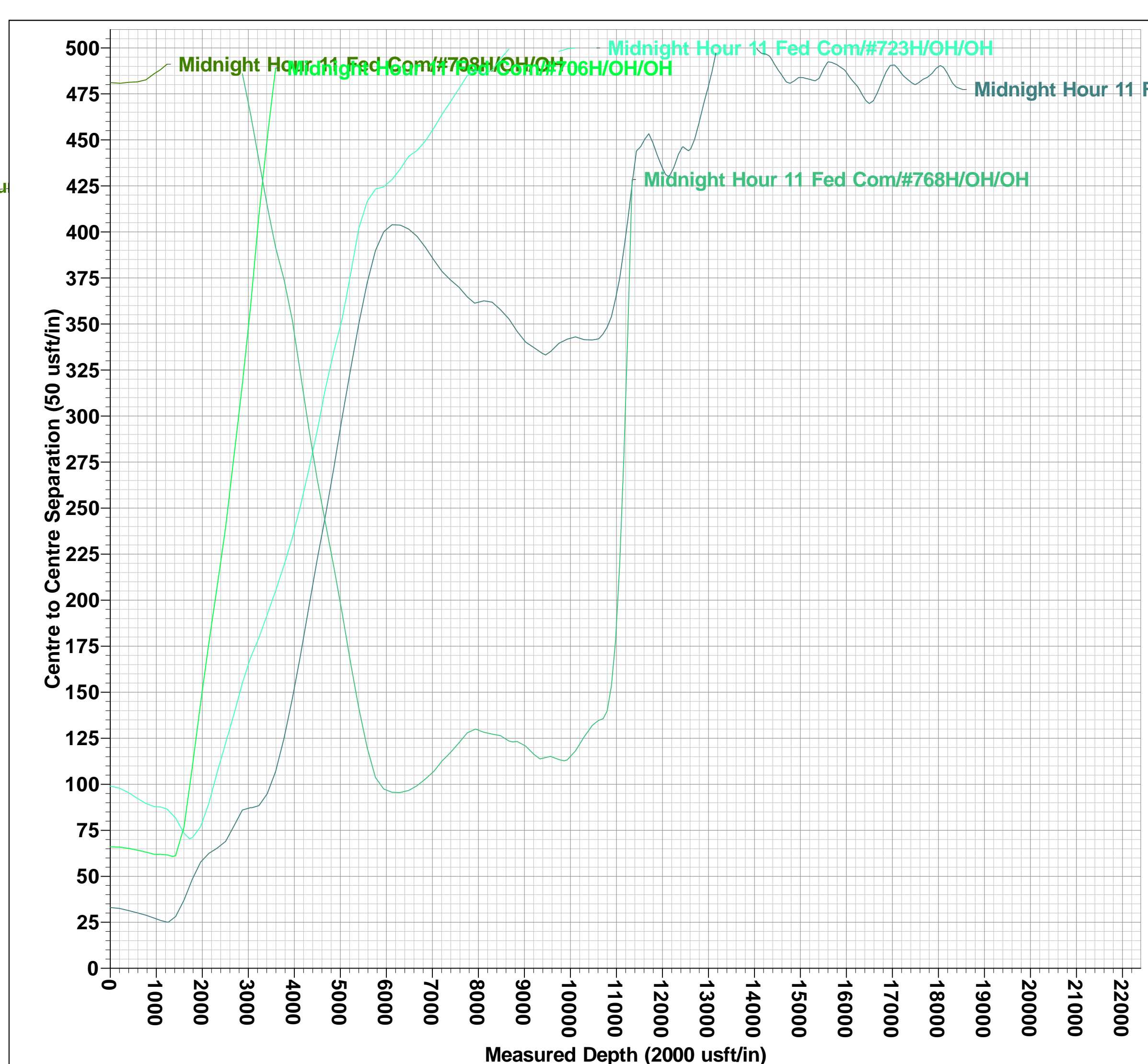
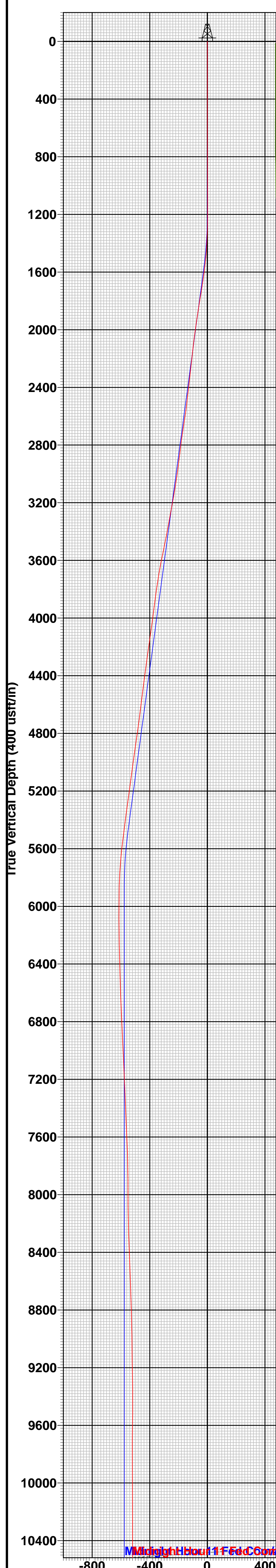
Azimuths to Grid North
 True North: -0.26°
 Magnetic North: 6.26°
 Magnetic Field
 Strength: 47246.3nT
 Dip Angle: 59.67°
 Date: 8/19/2022
 Model: IGRF2020

To convert a Magnetic Direction to a Grid Direction, Add 6.26°
 To convert a Magnetic Direction to a True Direction, Add 6.52° East
 To convert a True Direction to a Grid Direction, Subtract 0.26°

Eddy County, NM (NAD 83 NME)

Midnight Hour 11 Fed Com #704H

OH





Midland

**Eddy County, NM (NAD 83 NME)
Midnight Hour 11 Fed Com
#704H
OH**

Design: OH

Final PVA

26 September, 2022



Final PVA

Company:	Midland	Local Co-ordinate Reference:	Well #704H
Project:	Eddy County, NM (NAD 83 NME)	TVD Reference:	KB = 32' @ 3220.0usft
Site:	Midnight Hour 11 Fed Com	MD Reference:	KB = 32' @ 3220.0usft
Well:	#704H	North Reference:	Grid
Wellbore:	OH	Survey Calculation Method:	Minimum Curvature
Design:	OH	Database:	PEDM

Project	Eddy County, NM (NAD 83 NME)		
Map System:	US State Plane 1983	System Datum:	Mean Sea Level
Geo Datum:	North American Datum 1983		
Map Zone:	New Mexico Eastern Zone		

Site	Midnight Hour 11 Fed Com				
Site Position:		Northing:	384,955.00 usft	Latitude:	32° 3' 26.684 N
From:	Map	Easting:	690,054.00 usft	Longitude:	103° 51' 11.834 W
Position Uncertainty:	0.0 usft	Slot Radius:	13-3/16 "	Grid Convergence:	0.25 °

Well	#704H					
Well Position	+N/-S	0.0 usft	Northing:	385,011.00 usft	Latitude:	32° 3' 27.159 N
	+E/-W	0.0 usft	Easting:	691,839.00 usft	Longitude:	103° 50' 51.089 W
Position Uncertainty		0.0 usft	Wellhead Elevation:	usft	Ground Level:	3,188.0 usft

Wellbore	OH					
Magnetics	Model Name	Sample Date	Declination (°)	Dip Angle (°)	Field Strength (nT)	
	IGRF2020	8/19/2022	6.52	59.67	47,246.32476011	

Design	OH				
Audit Notes:					
Version:	1.0	Phase:	ACTUAL	Tie On Depth:	0.0
Vertical Section:		Depth From (TVD) (usft)	+N/-S (usft)	+E/-W (usft)	Direction (°)
		0.0	0.0	0.0	175.64

Survey Program	Date	9/26/2022			
From (usft)	To (usft)	Survey (Wellbore)	Tool Name	Description	
200.0	18,528.0	DrilTech MWD #1 (OH)	EOG MWD+IFR1	MWD + IFR1	



Final PVA

Company:	Midland	Local Co-ordinate Reference:	Well #704H
Project:	Eddy County, NM (NAD 83 NME)	TVD Reference:	KB = 32' @ 3220.0usft
Site:	Midnight Hour 11 Fed Com	MD Reference:	KB = 32' @ 3220.0usft
Well:	#704H	North Reference:	Grid
Wellbore:	OH	Survey Calculation Method:	Minimum Curvature
Design:	OH	Database:	PEDM

Survey												
MD (usft)	Inc (°)	Azi (azimuth) (°)	TVD (usft)	N/S (usft)	E/W (usft)	DLeg (°/100usft)	Build (°/100usft)	Turn (°/100usft)	High to Plan (usft)	Right to Plan (usft)		
0.0	0.00	0.00	0.0	0.0	0.0	0.00	0.00	0.00	0.0	0.0	0.0	0.0
200.0	0.44	351.61	200.0	0.8	-0.1	0.22	0.22	0.00	-0.8	0.0		
400.0	0.70	10.59	400.0	2.7	0.0	0.16	0.13	9.49	-2.7	0.5		
590.0	0.79	11.03	590.0	5.1	0.5	0.05	0.05	0.23	-5.1	0.5		
773.0	1.06	2.33	772.9	8.1	0.8	0.17	0.15	-4.75	-8.1	-0.4		
954.0	0.97	4.79	953.9	11.3	1.0	0.06	-0.05	1.36	-11.3	0.0		
1,091.0	1.06	1.71	1,090.9	13.7	1.1	0.08	0.07	-2.25	-13.7	-0.7		
1,233.0	1.49	19.99	1,232.9	16.7	1.8	0.41	0.30	12.87	-16.3	4.2		
1,418.0	3.78	106.74	1,417.7	17.3	8.4	2.15	1.24	46.89	5.1	18.6		
1,602.0	7.74	94.17	1,600.7	14.6	26.6	2.25	2.15	-6.83	2.2	21.3		
1,783.0	9.58	111.40	1,779.7	8.2	52.8	1.75	1.02	9.52	5.6	20.2		
1,963.0	8.44	116.41	1,957.5	-3.1	78.6	0.77	-0.63	2.78	2.6	15.7		
2,144.0	6.77	117.29	2,136.9	-13.9	100.0	0.92	-0.92	0.49	2.4	10.3		
2,325.0	6.24	107.01	2,316.7	-21.7	118.8	0.71	-0.29	-5.68	4.4	7.4		
2,507.0	6.77	100.33	2,497.6	-26.5	138.9	0.51	0.29	-3.67	7.3	8.3		
2,687.0	9.15	107.53	2,675.8	-32.7	162.9	1.43	1.32	4.00	7.4	7.1		
2,868.0	6.60	107.71	2,855.1	-40.2	186.6	1.41	-1.41	0.10	6.7	5.6		
3,049.0	8.62	95.76	3,034.5	-44.8	210.0	1.41	1.12	-6.60	5.6	8.1		
3,230.0	10.38	105.42	3,213.0	-50.4	239.2	1.31	0.97	5.34	1.3	8.7		
3,411.0	10.55	102.44	3,391.0	-58.4	271.1	0.31	0.09	-1.65	-7.9	8.6		
3,592.0	12.05	114.21	3,568.5	-69.7	304.5	1.52	0.83	6.50	-17.5	9.1		
3,773.0	8.79	113.51	3,746.5	-82.9	334.4	1.80	-1.80	-0.39	-26.6	4.7		
3,954.0	7.03	102.00	3,925.8	-90.8	358.0	1.30	-0.97	-6.36	-27.5	-2.6		
4,135.0	8.35	96.55	4,105.2	-94.6	381.9	0.83	0.73	-3.01	-27.3	-3.1		
4,316.0	8.00	94.44	4,284.3	-97.0	407.5	0.25	-0.19	-1.17	-29.1	-0.6		
4,497.0	7.56	95.67	4,463.7	-99.2	431.9	0.26	-0.24	0.68	-29.6	3.8		
4,678.0	6.86	94.26	4,643.2	-101.2	454.5	0.40	-0.39	-0.78	-28.6	6.8		



Final PVA

Company:	Midland	Local Co-ordinate Reference:	Well #704H
Project:	Eddy County, NM (NAD 83 NME)	TVD Reference:	KB = 32' @ 3220.0usft
Site:	Midnight Hour 11 Fed Com	MD Reference:	KB = 32' @ 3220.0usft
Well:	#704H	North Reference:	Grid
Wellbore:	OH	Survey Calculation Method:	Minimum Curvature
Design:	OH	Database:	PEDM

Survey												
MD (usft)	Inc (°)	Azi (azimuth) (°)	TVD (usft)	N/S (usft)	E/W (usft)	DLeg (°/100usft)	Build (°/100usft)	Turn (°/100usft)	High to Plan (usft)	Right to Plan (usft)		
4,858.0	8.88	88.20	4,821.5	-101.5	479.1	1.21	1.12	-3.37	-30.6	9.2		
5,039.0	7.91	87.23	5,000.6	-100.5	505.5	0.54	-0.54	-0.54	-34.0	15.4		
5,220.0	8.18	83.54	5,179.8	-98.4	530.8	0.32	0.15	-2.04	-37.6	20.8		
5,401.0	7.83	103.32	5,359.1	-99.8	555.6	1.53	-0.19	10.93	-28.7	36.9		
5,582.0	6.95	107.36	5,538.6	-105.9	578.0	0.56	-0.49	2.23	-25.9	38.3		
5,763.0	4.40	116.50	5,718.7	-112.3	594.7	1.49	-1.41	5.05	-23.3	40.5		
5,944.0	1.14	73.87	5,899.4	-114.9	602.6	2.01	-1.80	-23.55	-48.6	11.0		
6,125.0	0.26	327.08	6,080.4	-114.1	604.1	0.69	-0.49	-59.00	3.6	-51.4		
6,306.0	1.32	289.91	6,261.4	-113.0	601.9	0.62	0.59	-20.54	31.5	-39.1		
6,488.0	1.58	268.64	6,443.4	-112.4	597.5	0.33	0.14	-11.69	39.1	-25.7		
6,669.0	2.20	263.10	6,624.3	-112.8	591.5	0.36	0.34	-3.06	35.4	-22.1		
6,851.0	2.90	263.10	6,806.1	-113.8	583.5	0.38	0.38	0.00	27.3	-22.1		
7,032.0	2.73	266.09	6,986.9	-114.6	574.6	0.12	-0.09	1.65	17.2	-23.2		
7,213.0	2.73	266.53	7,167.7	-115.2	566.0	0.01	0.00	0.24	8.5	-23.3		
7,394.0	2.64	250.80	7,348.5	-116.8	557.8	0.41	-0.05	-8.69	6.1	-21.3		
7,576.0	2.90	250.36	7,530.2	-119.8	549.5	0.14	0.14	-0.24	-2.5	-21.3		
7,758.0	3.17	239.11	7,712.0	-123.9	540.8	0.36	0.15	-6.18	-7.8	-22.3		
7,939.0	0.88	199.20	7,892.9	-127.8	536.1	1.41	-1.27	-22.05	3.1	-25.3		
8,120.0	0.88	226.54	8,073.9	-130.0	534.6	0.23	0.00	15.10	-11.5	-23.3		
8,301.0	1.67	262.31	8,254.8	-131.3	531.0	0.60	0.44	19.76	-26.7	-11.3		
8,482.0	2.64	290.87	8,435.7	-130.2	524.5	0.78	0.54	15.78	-35.4	4.1		
8,664.0	1.93	304.06	8,617.5	-127.0	518.0	0.48	-0.39	7.25	-40.7	13.0		
8,845.0	1.85	272.06	8,798.4	-125.2	512.6	0.58	-0.04	-17.68	-46.9	-12.1		
9,026.0	0.97	277.07	8,979.4	-124.9	508.2	0.49	-0.49	2.77	-52.2	-7.7		
9,207.0	0.79	215.38	9,160.4	-125.7	505.9	0.51	-0.10	-34.08	-19.9	-51.0		
9,389.0	2.37	233.66	9,342.3	-129.0	502.2	0.90	0.87	10.04	-39.8	-41.8		
9,569.0	1.41	108.15	9,522.2	-131.9	501.3	1.88	-0.53	-69.73	57.1	-11.2		



Final PVA

Company:	Midland	Local Co-ordinate Reference:	Well #704H
Project:	Eddy County, NM (NAD 83 NME)	TVD Reference:	KB = 32' @ 3220.0usft
Site:	Midnight Hour 11 Fed Com	MD Reference:	KB = 32' @ 3220.0usft
Well:	#704H	North Reference:	Grid
Wellbore:	OH	Survey Calculation Method:	Minimum Curvature
Design:	OH	Database:	PEDM

Survey											
MD (usft)	Inc (°)	Azi (azimuth) (°)	TVD (usft)	N/S (usft)	E/W (usft)	DLeg (°/100usft)	Build (°/100usft)	Turn (°/100usft)	High to Plan (usft)	Right to Plan (usft)	
9,750.0	1.58	184.79	9,703.2	-135.1	503.2	1.03	0.09	42.34	-0.7	-56.0	
9,931.0	3.17	203.16	9,884.0	-142.1	501.0	0.96	0.88	10.15	-25.7	-52.1	
10,113.0	2.99	197.09	10,065.8	-151.3	497.6	0.20	-0.10	-3.34	-29.8	-55.1	
10,294.0	2.20	194.37	10,246.6	-159.2	495.4	0.44	-0.44	-1.50	-35.3	-56.6	
10,475.0	1.58	194.63	10,427.5	-165.0	493.9	0.34	-0.34	0.14	-41.6	-56.5	
10,563.0	0.88	189.01	10,515.5	-166.8	493.5	0.81	-0.80	-6.39	-37.7	-60.4	
10,618.0	0.44	198.19	10,570.5	-167.4	493.3	0.82	-0.80	16.69	-47.5	-53.5	
10,646.0	1.51	157.59	10,598.5	-167.9	493.4	4.34	3.84	-145.01	-1.7	-71.6	
KOP (MD=10646.0')											
10,709.0	4.22	148.80	10,661.4	-170.6	495.0	4.34	4.29	-13.95	6.1	-71.2	
10,799.0	16.97	179.12	10,749.7	-186.7	496.9	14.99	14.17	33.69	-40.9	-62.9	
10,890.0	23.83	176.84	10,834.9	-218.3	498.1	7.59	7.54	-2.51	-47.2	-63.5	
10,980.0	35.00	173.32	10,913.2	-262.3	502.1	12.55	12.41	-3.91	-47.9	-62.1	
11,071.0	46.69	172.79	10,981.9	-321.2	509.3	12.85	12.85	-0.58	-51.0	-54.8	
11,162.0	57.24	171.47	11,037.9	-392.1	519.2	11.65	11.59	-1.45	-52.2	-44.8	
11,197.0	61.92	172.75	11,055.7	-422.0	523.3	13.73	13.37	3.65	-52.8	-39.7	
HL Crossing, MD:11197.0', TVD:11055.7', N/S: -422.0', E/W:523.3', INC:61.92											
11,252.0	69.29	174.55	11,078.4	-471.8	528.8	13.73	13.40	3.28	-53.1	-33.1	
11,343.0	70.35	173.76	11,109.8	-556.7	537.5	1.42	1.16	-0.87	-43.4	-24.3	
11,434.0	72.81	174.11	11,138.5	-642.6	546.7	2.73	2.70	0.38	-18.9	-14.9	
11,524.0	85.03	176.84	11,155.8	-730.5	553.6	13.90	13.58	3.03	-1.5	-7.8	
11,615.0	89.16	178.33	11,160.4	-821.2	557.4	4.82	4.54	1.64	3.7	-4.3	
11,706.0	89.43	179.21	11,161.5	-912.2	559.3	1.01	0.30	0.97	5.3	-2.7	
11,796.0	87.93	181.23	11,163.6	-1,002.2	559.0	2.80	-1.67	2.24	7.9	-3.4	
11,887.0	87.93	181.76	11,166.9	-1,093.1	556.6	0.58	0.00	0.58	11.8	-6.1	
11,976.0	88.29	181.67	11,169.8	-1,182.0	554.0	0.42	0.40	-0.10	15.2	-9.2	
12,068.0	87.76	180.62	11,173.0	-1,273.9	552.1	1.28	-0.58	-1.14	19.0	-11.4	



Final PVA

Company:	Midland	Local Co-ordinate Reference:	Well #704H
Project:	Eddy County, NM (NAD 83 NME)	TVD Reference:	KB = 32' @ 3220.0usft
Site:	Midnight Hour 11 Fed Com	MD Reference:	KB = 32' @ 3220.0usft
Well:	#704H	North Reference:	Grid
Wellbore:	OH	Survey Calculation Method:	Minimum Curvature
Design:	OH	Database:	PEDM

Survey												
MD (usft)	Inc (°)	Azi (azimuth) (°)	TVD (usft)	N/S (usft)	E/W (usft)	DLeg (°/100usft)	Build (°/100usft)	Turn (°/100usft)	High to Plan (usft)	Right to Plan (usft)		
12,158.0	88.20	179.12	11,176.1	-1,363.9	552.3	1.74	0.49	-1.67	22.7	-11.5		
12,249.0	90.40	176.75	11,177.3	-1,454.8	555.6	3.55	2.42	-2.60	24.4	-8.6		
12,340.0	90.92	175.87	11,176.2	-1,545.6	561.5	1.12	0.57	-0.97	23.9	-3.1		
12,430.0	90.92	177.80	11,174.8	-1,635.4	566.4	2.14	0.00	2.14	23.0	1.5		
12,521.0	90.84	181.85	11,173.4	-1,726.4	566.7	4.45	-0.09	4.45	22.1	1.4		
12,612.0	92.33	182.72	11,170.8	-1,817.3	563.1	1.90	1.64	0.96	20.1	-2.5		
12,703.0	92.07	181.05	11,167.4	-1,908.2	560.1	1.86	-0.29	-1.84	17.2	-5.9		
12,794.0	88.90	178.51	11,166.6	-1,999.2	560.4	4.46	-3.48	-2.79	17.0	-5.9		
12,885.0	88.90	177.10	11,168.3	-2,090.1	563.9	1.55	0.00	-1.55	19.3	-2.8		
12,976.0	87.85	176.40	11,170.9	-2,180.9	569.1	1.39	-1.15	-0.77	22.4	2.0		
13,066.0	91.63	177.19	11,171.3	-2,270.7	574.1	4.29	4.20	0.88	23.4	6.7		
13,158.0	90.57	175.96	11,169.6	-2,362.5	579.6	1.76	-1.15	-1.34	22.0	11.8		
13,249.0	90.75	177.45	11,168.5	-2,453.4	584.8	1.65	0.20	1.64	21.3	16.7		
13,339.0	90.22	177.89	11,167.7	-2,543.3	588.5	0.77	-0.59	0.49	20.9	20.0		
13,430.0	90.48	180.09	11,167.2	-2,634.3	590.1	2.43	0.29	2.42	20.7	21.2		
13,521.0	90.40	180.18	11,166.5	-2,725.3	589.9	0.13	-0.09	0.10	20.4	20.7		
13,611.0	90.04	179.82	11,166.1	-2,815.3	589.9	0.57	-0.40	-0.40	20.4	20.3		
13,688.0	89.43	178.42	11,166.5	-2,892.3	591.1	1.98	-0.79	-1.82	21.1	21.2		
13,778.0	89.69	180.97	11,167.2	-2,982.3	591.6	2.85	0.29	2.83	22.2	21.3		
13,869.0	90.40	181.41	11,167.1	-3,073.2	589.7	0.92	0.78	0.48	22.5	19.1		
13,959.0	89.34	180.44	11,167.3	-3,163.2	588.2	1.60	-1.18	-1.08	23.1	17.3		
14,050.0	91.63	181.41	11,166.6	-3,254.2	586.7	2.73	2.52	1.07	22.7	15.4		
14,140.0	92.59	181.49	11,163.2	-3,344.1	584.5	1.07	1.07	0.09	19.7	12.8		
14,231.0	92.59	180.79	11,159.1	-3,435.0	582.7	0.77	0.00	-0.77	16.0	10.6		
14,321.0	92.07	180.70	11,155.5	-3,524.9	581.5	0.59	-0.58	-0.10	12.7	9.1		
14,411.0	88.81	180.79	11,154.8	-3,614.9	580.3	3.62	-3.62	0.10	12.4	7.6		
14,502.0	88.64	180.62	11,156.8	-3,705.9	579.2	0.26	-0.19	-0.19	14.8	6.1		



Final PVA

Company:	Midland	Local Co-ordinate Reference:	Well #704H
Project:	Eddy County, NM (NAD 83 NME)	TVD Reference:	KB = 32' @ 3220.0usft
Site:	Midnight Hour 11 Fed Com	MD Reference:	KB = 32' @ 3220.0usft
Well:	#704H	North Reference:	Grid
Wellbore:	OH	Survey Calculation Method:	Minimum Curvature
Design:	OH	Database:	PEDM

Survey												
MD (usft)	Inc (°)	Azi (azimuth) (°)	TVD (usft)	N/S (usft)	E/W (usft)	DLeg (°/100usft)	Build (°/100usft)	Turn (°/100usft)	High to Plan (usft)	Right to Plan (usft)		
14,592.0	90.48	181.05	11,157.5	-3,795.8	577.9	2.10	2.04	0.48	15.9	4.4		
14,683.0	90.31	180.44	11,156.9	-3,886.8	576.7	0.70	-0.19	-0.67	15.6	2.9		
14,773.0	91.36	180.70	11,155.6	-3,976.8	575.8	1.20	1.17	0.29	14.7	1.6		
14,864.0	90.92	180.00	11,153.7	-4,067.8	575.3	0.91	-0.48	-0.77	13.2	0.7		
14,954.0	90.92	180.00	11,152.3	-4,157.8	575.3	0.00	0.00	0.00	12.2	0.4		
15,045.0	89.25	178.86	11,152.2	-4,248.8	576.2	2.22	-1.84	-1.25	12.4	0.9		
15,136.0	89.43	177.63	11,153.2	-4,339.7	578.9	1.37	0.20	-1.35	13.8	3.3		
15,227.0	89.96	177.63	11,153.7	-4,430.6	582.7	0.58	0.58	0.00	14.7	6.7		
15,318.0	90.92	177.19	11,153.0	-4,521.5	586.8	1.16	1.05	-0.48	14.4	10.5		
15,409.0	92.77	177.19	11,150.1	-4,612.4	591.3	2.03	2.03	0.00	11.8	14.6		
15,499.0	92.95	177.36	11,145.6	-4,702.2	595.6	0.27	0.20	0.19	7.8	18.5		
15,590.0	89.78	178.59	11,143.4	-4,793.1	598.8	3.74	-3.48	1.35	6.2	21.4		
15,680.0	89.69	179.91	11,143.8	-4,883.1	599.9	1.47	-0.10	1.47	7.2	22.2		
15,770.0	91.45	179.82	11,142.9	-4,973.1	600.2	1.96	1.96	-0.10	6.9	22.1		
15,861.0	91.89	180.62	11,140.3	-5,064.0	599.8	1.00	0.48	0.88	4.8	21.3		
15,951.0	89.96	180.26	11,138.8	-5,154.0	599.1	2.18	-2.14	-0.40	4.0	20.3		
16,042.0	88.37	179.38	11,140.2	-5,245.0	599.4	2.00	-1.75	-0.97	5.9	20.2		
16,132.0	91.28	181.67	11,140.4	-5,335.0	598.6	4.11	3.23	2.54	6.8	19.0		
16,223.0	90.13	181.76	11,139.3	-5,425.9	595.9	1.27	-1.26	0.10	6.2	16.0		
16,314.0	87.05	179.82	11,141.5	-5,516.9	594.6	4.00	-3.38	-2.13	9.1	14.4		
16,405.0	88.46	179.65	11,145.1	-5,607.8	595.0	1.56	1.55	-0.19	13.2	14.4		
16,495.0	90.75	178.86	11,145.7	-5,697.8	596.2	2.69	2.54	-0.88	14.4	15.2		
16,586.0	91.98	178.59	11,143.6	-5,788.7	598.2	1.38	1.35	-0.30	12.9	16.9		
16,676.0	91.45	176.84	11,140.9	-5,878.6	601.8	2.03	-0.59	-1.94	10.8	20.1		
16,767.0	92.24	177.63	11,137.9	-5,969.5	606.2	1.23	0.87	0.87	8.5	24.1		
16,858.0	92.33	178.77	11,134.3	-6,060.3	609.0	1.26	0.10	1.25	5.4	26.6		
16,948.0	89.87	177.98	11,132.6	-6,150.3	611.6	2.87	-2.73	-0.88	4.3	28.8		



Final PVA

Company:	Midland	Local Co-ordinate Reference:	Well #704H
Project:	Eddy County, NM (NAD 83 NME)	TVD Reference:	KB = 32' @ 3220.0usft
Site:	Midnight Hour 11 Fed Com	MD Reference:	KB = 32' @ 3220.0usft
Well:	#704H	North Reference:	Grid
Wellbore:	OH	Survey Calculation Method:	Minimum Curvature
Design:	OH	Database:	PEDM

Survey												
MD (usft)	Inc (°)	Azi (azimuth) (°)	TVD (usft)	N/S (usft)	E/W (usft)	DLeg (°/100usft)	Build (°/100usft)	Turn (°/100usft)	High to Plan (usft)	Right to Plan (usft)		
17,038.0	90.92	180.26	11,132.0	-6,240.3	613.0	2.79	1.17	2.53	4.2	29.9		
17,129.0	88.46	180.70	11,132.5	-6,331.2	612.2	2.75	-2.70	0.48	5.3	28.7		
17,220.0	88.72	180.35	11,134.7	-6,422.2	611.4	0.48	0.29	-0.38	8.1	27.6		
17,310.0	89.08	179.82	11,136.4	-6,512.2	611.3	0.71	0.40	-0.59	10.5	27.1		
17,401.0	91.80	180.44	11,135.7	-6,603.2	611.0	3.07	2.99	0.68	10.3	26.5		
17,491.0	91.63	179.38	11,133.0	-6,693.1	611.2	1.19	-0.19	-1.18	8.3	26.3		
17,582.0	94.26	180.35	11,128.4	-6,784.0	611.4	3.08	2.89	1.07	4.1	26.1		
17,673.0	92.51	181.49	11,123.0	-6,874.8	609.9	2.29	-1.92	1.25	-0.6	24.3		
17,763.0	91.10	180.79	11,120.1	-6,964.8	608.2	1.75	-1.57	-0.78	-2.9	22.2		
17,854.0	90.04	180.44	11,119.2	-7,055.8	607.2	1.23	-1.16	-0.38	-3.2	20.8		
17,944.0	92.86	181.67	11,117.0	-7,145.7	605.5	3.42	3.13	1.37	-4.9	18.8		
18,035.0	90.04	182.99	11,114.7	-7,236.6	601.8	3.42	-3.10	1.45	-6.6	14.8		
18,107.0	89.25	182.90	11,115.1	-7,308.5	598.1	1.10	-1.10	-0.12	-5.6	10.8		
18,197.0	87.05	182.46	11,118.0	-7,398.3	593.9	2.49	-2.44	-0.49	-2.1	6.2		
18,288.0	86.88	181.76	11,122.8	-7,489.2	590.6	0.79	-0.19	-0.77	3.3	2.5		
18,379.0	90.22	182.11	11,125.1	-7,580.1	587.5	3.69	3.67	0.38	6.2	-0.9		
18,470.0	90.04	181.93	11,124.9	-7,671.0	584.3	0.28	-0.20	-0.20	6.5	-4.5		
Final MWD Survey (MD=18470.0')												
18,528.0	90.04	181.93	11,124.9	-7,729.0	582.3	0.00	0.00	0.00	6.9	-6.7		
Final Projection to Bit (MD=18528.0')												



Final PVA

Company:	Midland	Local Co-ordinate Reference:	Well #704H
Project:	Eddy County, NM (NAD 83 NME)	TVD Reference:	KB = 32' @ 3220.0usft
Site:	Midnight Hour 11 Fed Com	MD Reference:	KB = 32' @ 3220.0usft
Well:	#704H	North Reference:	Grid
Wellbore:	OH	Survey Calculation Method:	Minimum Curvature
Design:	OH	Database:	PEDM

Design Annotations				
Measured Depth (usft)	Vertical Depth (usft)	Local Coordinates		Comment
		+N/-S (usft)	+E/-W (usft)	
10,646.0	10,598.5	-167.9	493.4	KOP (MD=10646.0')
11,197.0	11,055.7	-422.0	523.3	HL Crossing, MD:11197.0', TVD:11055.7',N/S:-422.0', E/W:523.3', INC:61.92
18,470.0	11,124.9	-7,671.0	584.3	Final MWD Survey (MD=18470.0')
18,528.0	11,124.9	-7,729.0	582.3	Final Projection to Bit (MD=18528.0')

Checked By: _____ Approved By: _____ Date: _____

I CERTIFY THIS SURVEY TO BE TRUE AND CORRECT TO THE BEST OF MY BELIEF AND KNOWLEDGE
 KAY MADDOX 12/19/2022

Intent As Drilled

API #									
Operator Name:					Property Name:				Well Number

Kick Off Point (KOP)

UL	Section	Township	Range	Lot	Feet	From N/S	Feet	From E/W	County
Latitude					Longitude				NAD

First Take Point (FTP)

UL	Section	Township	Range	Lot	Feet	From N/S	Feet	From E/W	County
Latitude					Longitude				NAD

Last Take Point (LTP)

UL	Section	Township	Range	Lot	Feet	From N/S	Feet	From E/W	County
Latitude					Longitude				NAD

Is this well the defining well for the Horizontal Spacing Unit?

Is this well an infill well?

If infill is yes please provide API if available, Operator Name and well number for Defining well for Horizontal Spacing Unit.

API #									
Operator Name:					Property Name:				Well Number

KZ 06/29/2018

Submit To Appropriate District Office Two Copies District I 1625 N. French Dr., Hobbs, NM 88240 District II 811 S. First St., Artesia, NM 88210 District III 1000 Rio Brazos Rd., Aztec, NM 87410 District IV 1220 S. St. Francis Dr., Santa Fe, NM 87505	State of New Mexico Energy, Minerals and Natural Resources Oil Conservation Division 1220 South St. Francis Dr. Santa Fe, NM 87505	Form C-105 Revised August 1, 2011
		1. WELL API NO. 30-015-49541
		2. Type of Lease <input type="checkbox"/> STATE <input type="checkbox"/> FEE <input checked="" type="checkbox"/> FED/INDIAN
		3. State Oil & Gas Lease No.

WELL COMPLETION OR RECOMPLETION REPORT AND LOG

4. Reason for filing: <input checked="" type="checkbox"/> COMPLETION REPORT (Fill in boxes #1 through #31 for State and Fee wells only) <input type="checkbox"/> C-144 CLOSURE ATTACHMENT (Fill in boxes #1 through #9, #15 Date Rig Released and #32 and/or #33; attach this and the plat to the C-144 closure report in accordance with 19.15.17.13.K NMAC)	5. Lease Name or Unit Agreement Name MIDNIGHT HOUR 11 FEDERAL COM 6. Well Number: 704H
---	---

7. Type of Completion:
 NEW WELL WORKOVER DEEPENING PLUGBACK DIFFERENT RESERVOIR OTHER _____

8. Name of Operator EOG RESOURCES INC	9. OGRID 7377
---	-------------------------

10. Address of Operator PO BOX 2267 MIDLAND, TEXAS 79702	11. Pool name or Wildcat PURPLE SAGE; WOLFCAMP (GAS)
--	--

12. Location	Unit Ltr	Section	Township	Range	Lot	Feet from the	N/S Line	Feet from the	E/W Line	County
Surface:	H	11	26S	30E		2572	NORTH	1306	EAST	EDDY
BH:	P	14	26S	30E		341	SOUTH	757	EAST	EDDY

13. Date Spudded 07/12/2022	14. Date T.D. Reached 09/18/2022	15. Date Rig Released 09/19/2022	16. Date Completed (Ready to Produce) 11/30/2022	17. Elevations (DF and RKB, RT, GR, etc.) 3188'
---------------------------------------	--	--	--	--

18. Total Measured Depth of Well MD 18,528'	19. Plug Back Measured Depth TVD 11,124'	20. Was Directional Survey Made? YES	21. Type Electric and Other Logs Run GAMMA RAY/CBL
---	--	--	--

22. Producing Interval(s), of this completion - Top, Bottom, Name
WOLFCAMP 11,254 - 18,505'

23. CASING RECORD (Report all strings set in well)

CASING SIZE	WEIGHT LB./FT.	DEPTH SET	HOLE SIZE	CEMENTING RECORD	AMOUNT PULLED
9 5/8"	40.5# J-55	1139'	12 1/4"	900 SXS CL C/CIRC	
7 5/8"	29.7# P110 EC	10,606'	8 3/4"	1829 SXS CL C&H/CIRC	
5 1/2"	20# HCP 110	18,513'	6 3/4"	885 CL H/TOC 8960' CBL	

24. LINER RECORD

SIZE	TOP	BOTTOM	SACKS CEMENT	SCREEN	SIZE	DEPTH SET	PACKER SET

26. Perforation record (interval, size, and number) 11,254 - 18,505' 3 1/8", 1530 HOLES	27. ACID, SHOT, FRACTURE, CEMENT, SQUEEZE, ETC. DEPTH INTERVAL AMOUNT AND KIND MATERIAL USED 11,254 - 18,505' FRAC W/ 340,325 BBLs LOAD FLD, W/17,493,554 LBS PROPPANT
---	---

28. PRODUCTION

Date First Production 11/30/2022	Production Method (<i>Flowing, gas lift, pumping - Size and type pump</i>) FLOWING	Well Status (<i>Prod. or Shut-in</i>) PRODUCING
--	--	---

Date of Test 12/08/2022	Hours Tested 24 HRS	Choke Size 86	Prod'n For Test Period	Oil - Bbl 3917	Gas - MCF 16,592	Water - Bbl. 8303	Gas - Oil Ratio 4235
-----------------------------------	-------------------------------	-------------------------	------------------------	--------------------------	----------------------------	-----------------------------	--------------------------------

Flow Tubing Press. 1483	Casing Pressure	Calculated 24-Hour Rate	Oil - Bbl.	Gas - MCF	Water - Bbl.	Oil Gravity - API - (<i>Corr.</i>) 49
-----------------------------------	-----------------	-------------------------	------------	-----------	--------------	---

29. Disposition of Gas (<i>Sold, used for fuel, vented, etc.</i>)	30. Test Witnessed By
---	-----------------------

31. List Attachments
C-102, C-104, DIRECTIONAL SURVEY, H SPACING (POINTS),

32. If a temporary pit was used at the well, attach a plat with the location of the temporary pit.

33. If an on-site burial was used at the well, report the exact location of the on-site burial:
 Latitude _____ Longitude _____ NAD 1927 1983

I hereby certify that the information shown on both sides of this form is true and complete to the best of my knowledge and belief

Signature **Kay Maddox** Name **Kay Maddox** Title **Senior Regulatory Specialist** Date **01/09/2023**
 E-mail Address **kay_maddox@eogresources.com**

INSTRUCTIONS

This form is to be filed with the appropriate District Office of the Division not later than 20 days after the completion of any newly-drilled or deepened well and not later than 60 days after completion of closure. When submitted as a completion report, this shall be accompanied by one copy of all electrical and radio-activity logs run on the well and a summary of all special tests conducted, including drill stem tests. All depths reported shall be measured depths. In the case of directionally drilled wells, true vertical depths shall also be reported. For multiple completions, items 11, 12 and 26-31 shall be reported for each zone.

INDICATE FORMATION TOPS IN CONFORMANCE WITH GEOGRAPHICAL SECTION OF STATE

Southeastern New Mexico		Northwestern New Mexico	
T. Anhy RUSTLER 1062'	T. Canyon BRUSHY 5885'	T. Ojo Alamo	T. Penn A"
T. Salt T/SALT 1447'	T. Strawn	T. Kirtland	T. Penn. "B"
B. Salt B/SALT 3685'	T. Atoka	T. Fruitland	T. Penn. "C"
T. Yates	T. Miss	T. Pictured Cliffs	T. Penn. "D"
T. 7 Rivers	T. Devonian	T. Cliff House	T. Leadville
T. Queen	T. Silurian	T. Menefee	T. Madison
T. Grayburg	T. Montoya	T. Point Lookout	T. Elbert
T. San Andres	T. Simpson	T. Mancos	T. McCracken
T. Glorieta	T. McKee	T. Gallup	T. Ignacio Otzte
T. Paddock	T. Ellenburger	Base Greenhorn	T. Granite
T. Blinebry	T. Gr. Wash	T. Dakota	
T. Tubb	T. Delaware Sand	T. Morrison	
T. Drinkard	T. Bone Springs	T. Todilto	
T. Abo	T. 1ST BONE SPRING SAND 8627'	T. Entrada	
T. Wolfcamp 11,947'	T. 2ND BONE SPRING SAND 9279'	T. Wingate	
T. Penn	T. 3RD BONE SPRING SAND 10,554'	T. Chinle	
T. Cisco (Bough C)	T.	T. Permian	

OIL OR GAS SANDS OR ZONES

No. 1, from.....to.....
 No. 2, from.....to.....
 No. 3, from.....to.....
 No. 4, from.....to.....

IMPORTANT WATER SANDS

Include data on rate of water inflow and elevation to which water rose in hole.

No. 1, from.....to.....feet.....
 No. 2, from.....to.....feet.....
 No. 3, from.....to.....feet.....

LITHOLOGY RECORD (Attach additional sheet if necessary)

From	To	Thickness In Feet	Lithology	From	To	Thickness In Feet	Lithology

Sante Fe Main Office
Phone: (505) 476-3441

General Information
Phone: (505) 629-6116

Online Phone Directory
<https://www.emnrd.nm.gov/ocd/contact-us>

State of New Mexico
Energy, Minerals and Natural Resources
Oil Conservation Division
1220 S. St Francis Dr.
Santa Fe, NM 87505

ACKNOWLEDGMENTS

Action 174275

ACKNOWLEDGMENTS

Operator: EOG RESOURCES INC 5509 Champions Drive Midland, TX 79706	OGRID: 7377
	Action Number: 174275
	Action Type: [C-104] Completion Packet (C-104C)

ACKNOWLEDGMENTS

<input checked="" type="checkbox"/>	I hereby certify that the required Water Use Report has been, or will be, submitted for this wells completion.
<input checked="" type="checkbox"/>	I hereby certify that the required FracFocus disclosure has been, or will be, submitted for this wells completion.

Sante Fe Main Office
Phone: (505) 476-3441

General Information
Phone: (505) 629-6116

Online Phone Directory
<https://www.emnrd.nm.gov/ocd/contact-us>

State of New Mexico
Energy, Minerals and Natural Resources
Oil Conservation Division
1220 S. St Francis Dr.
Santa Fe, NM 87505

CONDITIONS

Action 174275

CONDITIONS

Operator: EOG RESOURCES INC 5509 Champions Drive Midland, TX 79706	OGRID: 7377
	Action Number: 174275
	Action Type: [C-104] Completion Packet (C-104C)

CONDITIONS

Created By	Condition	Condition Date
plmartinez	File 3160-4 Completion Report within 10 days of BLM approval.	4/14/2026