

Submit Copy To Appropriate District  
Office  
District I - (575) 393-6161  
1625 N. French Dr., Hobbs, NM 88240  
District II - (575) 748-1283  
811 S. First St., Artesia, NM 88210  
District III - (505) 334-6178  
1000 Rio Brazos Rd., Aztec, NM 87410  
District IV - (505) 476-3460  
1220 S. St. Francis Dr., Santa Fe, NM  
87505

State of New Mexico  
Energy, Minerals and Natural Resources

Form C-103  
Revised July 18, 2013

OIL CONSERVATION DIVISION  
1220 South St. Francis Dr.  
Santa Fe, NM 87505

WELL API NO. 30-015-01906
5. Indicate Type of Lease STATE <input checked="" type="checkbox"/> FEE <input type="checkbox"/>
6. State Oil & Gas Lease No.
7. Lease Name or Unit Agreement Name ADKINS WILLIAMS STATE
8. Well Number #006
9. OGRID Number 313121
10. Pool name or Wildcat ARTESIA;QUEEN-GRAYBURG-SAN ANDRES
11. Elevation (Show whether DR, RKB, RT, GR, etc.)

**SUNDRY NOTICES AND REPORTS ON WELLS**  
(DO NOT USE THIS FORM FOR PROPOSALS TO DRILL OR TO DEEPEN OR PLUG BACK TO A DIFFERENT RESERVOIR. USE "APPLICATION FOR PERMIT" (FORM C-101) FOR SUCH PROPOSALS.)

1. Type of Well: Oil Well  Gas Well  Other

2. Name of Operator  
POCO Resources LLC

3. Address of Operator  
3307 E Castleberry Road Artesia, NM 88210 U.S.A.

4. Well Location  
1180 FSL & 1595 FEL  
O-17-18S-28E NMPM: Eddy

12. Check Appropriate Box to Indicate Nature of Notice, Report or Other Data

<p><b>NOTICE OF INTENTION TO:</b></p> <p>PERFORM REMEDIAL WORK <input type="checkbox"/> PLUG AND ABANDON <input checked="" type="checkbox"/></p> <p>TEMPORARILY ABANDON <input type="checkbox"/> CHANGE PLANS <input type="checkbox"/></p> <p>PULL OR ALTER CASING <input type="checkbox"/> MULTIPLE COMPL <input type="checkbox"/></p> <p>DOWNHOLE COMMINGLE <input type="checkbox"/></p> <p>CLOSED-LOOP SYSTEM <input type="checkbox"/></p> <p>OTHER: <input type="checkbox"/></p>	<p><b>SUBSEQUENT REPORT OF:</b></p> <p>REMEDIAL WORK <input type="checkbox"/> ALTERING CASING <input type="checkbox"/></p> <p>COMMENCE DRILLING OPNS. <input type="checkbox"/> P AND A <input type="checkbox"/></p> <p>CASING/CEMENT JOB <input type="checkbox"/></p> <p>OTHER: <input type="checkbox"/></p>
--	--

13. Describe proposed or completed operations. (Clearly state all pertinent details, and give pertinent dates, including estimated date of starting any proposed work). SEE RULE 19.15.7.14 NMAC. For Multiple Completions: Attach wellbore diagram of proposed completion or recompletion.

NMOCD plans to plug this well in accordance with the attached procedure and any agreed modifications thereto.

Move on location: TBD  
Move off location: TBD

Spud Date:

Rig Release Date:

I hereby certify that the information above is true and complete to the best of my knowledge and belief.

SIGNATURE: Ethan Wakefield

TITLE: Authorized Representative

DATE 4/2/26

Type or print name: Ethan Wakefield

E-mail address: e.wakefield@dwsrigs.com

PHONE: 405-343-7736

**For State Use Only**

APPROVED BY: \_\_\_\_\_ TITLE \_\_\_\_\_ DATE \_\_\_\_\_

Conditions of Approval (if any): \_\_\_\_\_

## **POCO Resources LLC**

### **Plug And Abandonment Procedure**

#### **ADKINS WILLIAMS STATE #006**

1180 FSL & 1595 FEL, O-17-18S-28E

Eddy County, NM / API: 30-015-01906

1. Hold pre-job safety meeting. Comply with all NMOCD, BLM safety and environmental regulations. Test rig anchors prior to moving in rig if not rigged to base beam.
2. Perform spiral gas check. Check casing, tubing, and Bradenhead pressures.
3. Remove existing piping on casing valve. RU blow lines from casing valves and begin blowing down casing pressure. Perform mandatory 40 bbl well kill. If a different fluid or amount is required kill the well as necessary. Ensure the well is dead or on a vacuum.
4. ND wellhead and NU BOP. Function test BOP.
5. P/U 4-1/2" bit or casing scraper on 2-3/8" work string and round trip as deep as possible above casing shoe at  $\approx 2,033'$ .
6. P/U 4-1/2" CR, TIH and set CR at  $\pm 1,983'$ . Pressure test tubing to 1000 psi. Sting out of CR. Load hole and pressure test casing to 800 psi. If casing does not test, then spot or tag subsequent plugs as appropriate. POOH w/ tubing.
  - a. Plug #1 (under CR) may be pumped prior to CBL.
7. RU wireline and run CBL with 500 psi on casing from CR at 1,983' to surface to identify TOC. Adjust plugs as necessary for new TOC. Email log copy to

Diede, Loren, [Loren.Diede@emnrd.nm.gov](mailto:Loren.Diede@emnrd.nm.gov) and to Gilbert Cordero at [gilbert.cordero@emnrd.nm.gov](mailto:gilbert.cordero@emnrd.nm.gov) upon completion of logging operations.

8. Rig up to pump cement down tubing. Pump water to establish rate down tubing.
9. Circulate wellbore. Use salt gel or mud spacer in between plugs.

**NOTE: All plugs include excess footage to meet requirements.**

**10. Plug 1: Open Hole, Top 1,983', 12 Sacks Type III Cement**

Mix 12 sx Type III cement and squeeze below CR to cover the open hole.

**11. Plug 2: CR, 1,983'-1,883', 7 Sacks Type III Cement**

Mix 7 sx Type III cement and spot a balanced plug inside casing to cover the CR.

**12. Plug 3: Queen Formation Top, 1,630'-1,480', 33 Sacks Type III Cement**

If determined by CBL, perforate at 1,630'. Mix 33 sx Type III cement and spot an inside/outside plug to cover the Queen formation top.

**13. Plug 4: 7 Rivers, Yates, and B Salt Formation Tops, 975'-605', 110 Sacks Type III Cement**

If determined by CBL, perforate at 975'. Mix 110 sx Type III cement and spot an inside/outside plug to cover the 7 Rivers, Yates, and B Salt formation tops.

**14. Plug 5: T Salt Formation Top, Rustler Formation Top, and Surface Casing Shoe, 600'-Surface, 131 Sacks Type III Cement**

Attempt to pressure test the bradenhead annulus to 300 psi; note the volume to load. If BH annulus holds pressure, then establish circulation out casing valve with water. If BH annulus does not test, then perforate at the

appropriate depth and attempt to circulate cement to surface filling the casing from 600' and the annulus from the squeeze holes to surface. Shut in well and WOC.

15. ND cementing valves and cut off wellhead. Fill annuli with cement as necessary. Install P&A marker to comply with regulations. Record GPS coordinates for P&A marker on tower report. Photograph P&A marker in place. RD, MOL and restore location per BLM stipulations.



## Existing Wellbore Diagram

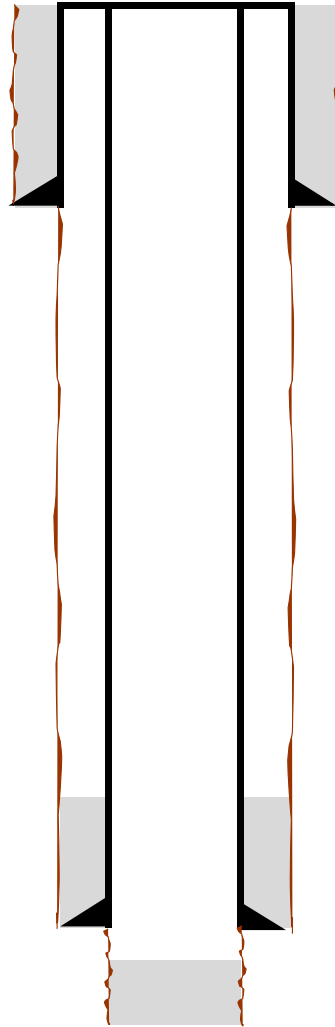
POCO Resources LLC  
ADKINS WILLIAMS STATE #006  
API: 30-015-01906  
Eddy County, New Mexico

**Surface Casing**  
8" 26# @ 550'  
OH: 10"  
Cement: Unknown

**Formation Tops**  
Rustler - 350'  
T Salt - 390'  
B Salt - 705'  
Yates - 765'  
7 Rivers - 925'  
Queen - 1580'  
Grayburg - 2033'

**Production Casing**  
4-1/2" 9.5# @ 2033'  
0.0912 cuft/ft  
OH: 7"  
Cemented W/ 150 sx

**Open Hole**  
2033'-2300'



PBTD: 2053



# Proposed Wellbore Diagram

POCO Resources LLC  
ADKINS WILLIAMS STATE #006  
API: 30-015-01906  
Eddy County, New Mexico

**Plug 4**  
Determine by CBL  
Assume Inside/Outside  
Perf @ 975'  
975' to 605'  
370 foot plug  
85 sacks outside, 25 sacks inside

**Plug 3**  
Determine by CBL  
Assume Inside/Outside, Perf @  
1630'  
1630' to 1480'  
150 foot plug  
23 sacks outside, 10 sacks inside

**Plug 2**  
Above CR  
1983' to 1883'  
100 foot plug  
7 sacks Type III Cement

**Plug 1**  
SQ Under CR  
Top 1983'  
12 sacks Type III Cement

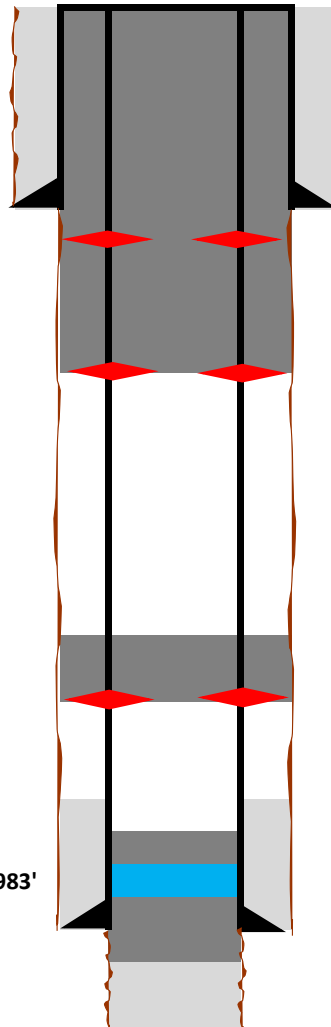
**Surface Casing**  
8" 26# @ 550'  
OH: 10"  
Cement: Unknown

**Formation Tops**  
Rustler - 350'  
T Salt - 390'  
B Salt - 705'  
Yates - 765'  
7 Rivers - 925'  
Queen - 1580'  
Grayburg - 2033'

**Production Casing**  
4-1/2" 9.5# @ 2033'  
0.0912 cuft/ft  
OH: 7"  
Cemented W/ 150 sx  
CR @ 1983'

**Open Hole**  
2033'-2300'

**Plug 5**  
SQ from Surface  
600' to Surface  
600 foot plug  
131 sacks Type III Cement



Type III: 1.37 cuft/sx, 14.6 ppg

PBT: 2053

Sante Fe Main Office  
Phone: (505) 476-3441

General Information  
Phone: (505) 629-6116

Online Phone Directory  
<https://www.emnrd.nm.gov/ocd/contact-us>

**State of New Mexico**  
**Energy, Minerals and Natural Resources**  
**Oil Conservation Division**  
**1220 S. St Francis Dr.**  
**Santa Fe, NM 87505**

DEFINITIONS

Action 572590

**DEFINITIONS**

Operator: J.A. Drake Well Service Inc. (OPG Vendor) 607 W. Pinon St Farmington, NM 87401	OGRID: 333581
	Action Number: 572590
	Action Type: [UF-OMA] NOI Plug & Abandon Well (UF-OMA-C-103F)

**DEFINITIONS**

The OCD Mitigation Activity (OMA) forms are a subset of the OCD's forms exclusively designed for activities related to State of New Mexico's contracted evaluation, plugging, decommissioning, remediation, salvage and reclamation activities. Specifically, these forms are typically used where the OCD has acquired a hearing order allowing the OCD to perform mitigation activities on wells and associated facilities that no longer have an authorized or viable operator to perform the necessary work. These forms are not to be utilized for any other purpose.

Sante Fe Main Office  
Phone: (505) 476-3441

General Information  
Phone: (505) 629-6116

Online Phone Directory  
<https://www.emnrd.nm.gov/ocd/contact-us>

**State of New Mexico**  
**Energy, Minerals and Natural Resources**  
**Oil Conservation Division**  
**1220 S. St Francis Dr.**  
**Santa Fe, NM 87505**

QUESTIONS

Action 572590

**QUESTIONS**

Operator: J.A. Drake Well Service Inc. (OPG Vendor) 607 W. Pinon St Farmington, NM 87401	OGRID: 333581
	Action Number: 572590
	Action Type: [UF-OMA] NOI Plug & Abandon Well (UF-OMA-C-103F)

**QUESTIONS**

<b>Prerequisites</b>	
[OGRID] Well Operator	[373121] POCO Resources LLC
[API] Well Name and Number	[30-015-01906] ADKINS WILLIAMS STATE #006
Well Status	Reclamation Fund Approved

Sante Fe Main Office  
Phone: (505) 476-3441

General Information  
Phone: (505) 629-6116

Online Phone Directory  
<https://www.emnrd.nm.gov/ocd/contact-us>

**State of New Mexico**  
**Energy, Minerals and Natural Resources**  
**Oil Conservation Division**  
**1220 S. St Francis Dr.**  
**Santa Fe, NM 87505**

CONDITIONS

Action 572590

**CONDITIONS**

Operator: J.A. Drake Well Service Inc. (OPG Vendor) 607 W. Pinon St Farmington, NM 87401	OGRID: 333581
	Action Number: 572590
	Action Type: [UF-OMA] NOI Plug & Abandon Well (UF-OMA-C-103F)

**CONDITIONS**

Created By	Condition	Condition Date
loren.diede	Notify NMOCD 24 hours prior to beginning P&A operations.	4/15/2026
loren.diede	For Orphan wells OCD requires a photo and the GPS coordinates of the P&A marker to be included with the C-103P subsequent P&A report. The API# on the marker photo must be clearly legible.	4/15/2026
loren.diede	OCD has determined that this well IS NOT within the LPCH restricted area and that an above-ground P&A marker is required.	4/15/2026