

Submit 1 Copy To Appropriate District Office
District I - (575) 393-6161
1625 N. French Dr., Hobbs, NM 88240
District II - (575) 748-1283
811 S. First St., Artesia, NM 88210
District III - (505) 334-6178
1000 Rio Brazos Rd., Aztec, NM 87410
District IV - (505) 476-3460
1220 S. St. Francis Dr., Santa Fe, NM 87505

State of New Mexico
Energy, Minerals and Natural Resources

Form C-103
Revised July 18, 2013

OIL CONSERVATION DIVISION
1220 South St. Francis Dr.
Santa Fe, NM 87505

WELL API NO. 30-015-36116
5. Indicate Type of Lease STATE [X] FEE []
6. State Oil & Gas Lease No. E-1059
7. Lease Name or Unit Agreement Name South Red Lake 11 Unit
8. Well Number 57
9. OGRID Number 330522
10. Pool name or Wildcat Red Lake; Queen-Grayburg-SA
11. Elevation (Show whether DR, RKB, RT, GR, etc.) 3650' GL

SUNDRY NOTICES AND REPORTS ON WELLS
(DO NOT USE THIS FORM FOR PROPOSALS TO DRILL OR TO DEEPEN OR PLUG BACK TO A DIFFERENT RESERVOIR. USE "APPLICATION FOR PERMIT" (FORM C-101) FOR SUCH PROPOSALS.)
1. Type of Well: Oil Well [X] Gas Well [] Other []
2. Name of Operator Apache Corporation
3. Address of Operator 303 Veterans Airpark Lane, Ste. 3000, Midland, Tx 79705
4. Well Location
Unit Letter G : 2305' feet from the NORTH line and 1650' feet from the EAST line
Section 36 Township 17S Range 27E NMPM County Eddy

12. Check Appropriate Box to Indicate Nature of Notice, Report or Other Data

NOTICE OF INTENTION TO:
PERFORM REMEDIAL WORK [] PLUG AND ABANDON []
TEMPORARILY ABANDON [] CHANGE PLANS []
PULL OR ALTER CASING [] MULTIPLE COMPL []
DOWNHOLE COMMINGLE []
CLOSED-LOOP SYSTEM []
OTHER: []
SUBSEQUENT REPORT OF:
REMEDIAL WORK [] ALTERING CASING []
COMMENCE DRILLING OPNS. [] P AND A [X]
CASING/CEMENT JOB []
OTHER: []

13. Describe proposed or completed operations. (Clearly state all pertinent details, and give pertinent dates, including estimated date of starting any proposed work). SEE RULE 19.15.7.14 NMAC. For Multiple Completions: Attach wellbore diagram of proposed completion or recompletion.

- 1. 03/13/26 Notified OCD on MI P&A equipment.
2. 03/16/26 Set 5 1/2 CIBP @ 1500'. Circ MLF from 1500'-surf. Spot 80 sx class C cmt @ 1500'.
3. 03/17/26 Tag TOC @ 695'. Perf @ 250', notify OCD of perf. M&P 120 sx class C cmt from 463' on 5 12" csg, 8 5/8" to surface. Tag @ surf. Cut off well head, back free LOC. P&A complete.
4. 04/02/26 RU wellhead cutoff. Cutoff wellhead and anchors. Install dry hole marker.
5. 04/09/26 Submit paperwork to NMOCD.

NOTE: Apache Corporation is submitting the following P&A C-103P on behalf of Acacia Operating, LLC. OGRID# 330522

Spud Date: 4/14/2008 Rig Release Date: 4/20/2008

I hereby certify that the information above is true and complete to the best of my knowledge and belief.

SIGNATURE [Signature] TITLE Agent DATE 3/19/26
Type or print name Jimmy Bagley E-mail address: sunsetwellservice@yahoo.com PHONE: 432-561-8600
For State Use Only

APPROVED BY: TITLE DATE
Conditions of Approval (if any):

**Apache Corporation
South Red Lake II Unit #057
30-015-36116**

1. **3/13/2026** MIRU P&A equipment.
2. **3/16/2026** Plug (#1) Set CIBP @1500', spot (80 sxs) of Class "C" cmt from 1500'-700', csg size 5 1/2".
3. **3/17/2026** Tag TOC @695'. Perf'd @250', notified NMOCD.
Plug (#2) Perf csg @250', squeeze (120 sxs) Class "C" cmt from 463'-0', csg size 8 5/8". Cement at surface.
4. **4/2/2026** RU wellhead cutoff crew. Cutoff wellhead and anchors. Install dry hole marker.
5. **4/9/2026** Submit paperwork to NMOCD.

NOTE: Apache Corporation is submitting the following P&A C-103P on behalf of Acacia Operating, LLC. OGRID# 330522



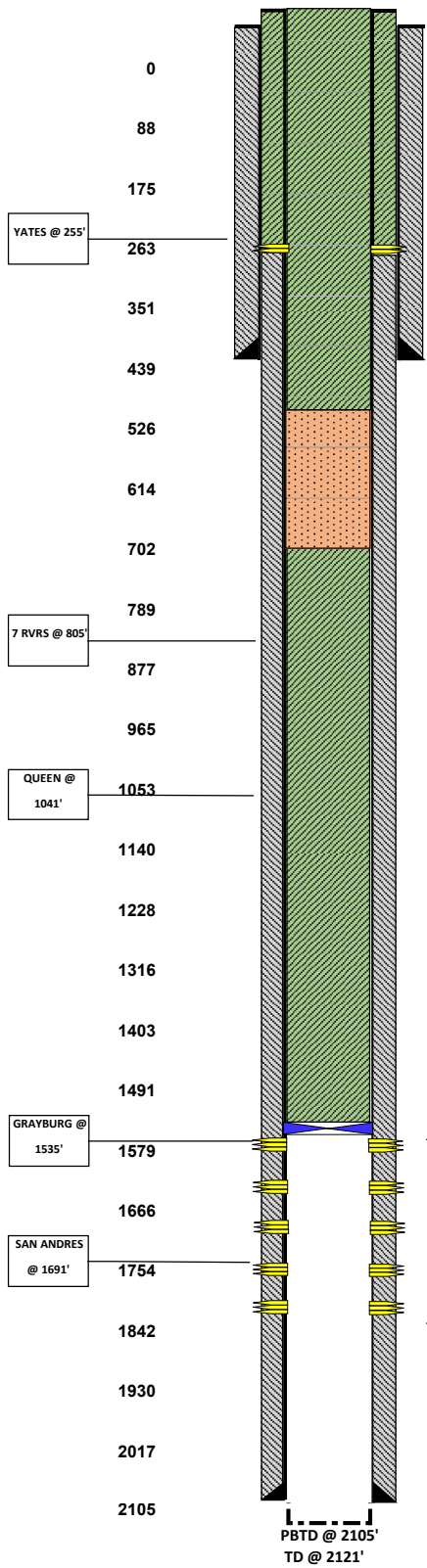
LEASE NAME SOUTH RED LAKE II
 WELL # 57
 API # 30-015-36116
 COUNTY EDDY, NM

FORM TOPS

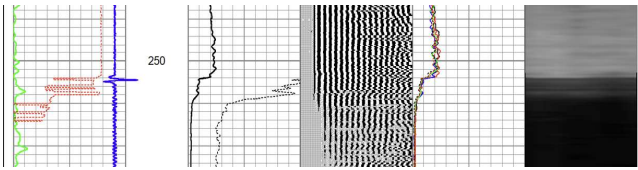
FINAL P&A WB DIAGRAM

12 1/4" HOLE
 8 5/8 20# @ 413'
 W/250 SX CMT TO SURF

7 7/8" HOLE
 5 1/2" 15.5# @ 2081'
 W/450 SX CMT TO SURF (CALC)



PLUG #2
 3/17/2026 RECEIVED PERMISSION FROM LOREN @ OCD & PUH TO 250' & PERF'D CSG, RIH TO 463' & CIR'D CMT TO SURF. POOH W/TBG & TIED ON TO CSG, CONTINUED TO PUMP CMT & CIRCULATED CMT OUT 5 1/2" & 8 5/8" CSG TO SURF. PUMPED A TOTAL OF 120 SX CLASS "C" CMT. RDMO P&A EQUIP.
 4/2/2026 CUT WELL HEAD AND ANCHORS OFF, INSTALL DRY HOLE MARKER, TURN OVER TO RECLAMATION TEAM.



PLUG #1
 3/13/2026 MIRU P&A EQUIP. POOH & LD RODS & PUMP. SDFWE 3/16/2026 POOH & LD TBG. RIH W/WL & SET CIBP @ 1500'. **RUN CBL & FORWARDED TO NMOCD.** RIH W/TBG, CIRC'D W/MLF & SPOTTED 80 SX CLASS "C" CMT FROM 1500'- 700'. WOC/TAG. TAGGED TOC @ 695'. CONFIRMED TAG W/OCD.

APCI # 30-015-56116
SOUTH RED LAKE II UNIT # 57



Sante Fe Main Office
Phone: (505) 476-3441

General Information
Phone: (505) 629-6116

Online Phone Directory
<https://www.emnrd.nm.gov/ocd/contact-us>

State of New Mexico
Energy, Minerals and Natural Resources
Oil Conservation Division
1220 S. St Francis Dr.
Santa Fe, NM 87505

CONDITIONS

Action 573412

CONDITIONS

Operator: APACHE CORPORATION 303 Veterans Airpark Ln Midland, TX 79705	OGRID: 873
	Action Number: 573412
	Action Type: [C-103P] Sub. Plugging (C-103P)

CONDITIONS

Created By	Condition	Condition Date
loren.diede	None	4/15/2026