

District I  
1625 N. French Dr., Hobbs, NM 88240  
District II  
811 S. First St., Artesia, NM 88210  
District III  
1000 Rio Brazos Rd., Aztec, NM 87410  
District IV  
1220 S. St. Francis Dr., Santa Fe, NM 87505

State of New Mexico  
Energy, Minerals & Natural  
Resources

Form C-104  
Revised August 1, 2011

Submit one copy to appropriate District Office

Oil Conservation Division  
1220 South St. Francis Dr.

AMENDED REPORT

**I. REQUEST FOR ALLOWABLE MINDS AUTHORIZATION TO TRANSPORT**

<sup>1</sup> Operator name and Address EOG RESOURCES INC PO BOX 2267 MIDLAND, TEXAS 79702		<sup>2</sup> OGRID Number 7377
		<sup>3</sup> Reason for Filing Code/ Effective Date NW 12/01/2022
<sup>4</sup> API Number 30 - 015-49545	<sup>5</sup> Pool Name PURPLE SAGE; WOLFCAMP (GAS)	<sup>6</sup> Pool Code 98220
<sup>7</sup> Property Code 332869	<sup>8</sup> Property Name MIDNIGHT HOUR 11 FEDERAL COM	<sup>9</sup> Well Number 763H

**II. <sup>10</sup> Surface Location**

Ul or lot no.	Section	Township	Range	Lot Idn	Feet from the	North/South Line	Feet from the	East/West line	County
G	11	26S	30E		2555'	NORTH	1786'	EAST	EDDY

**<sup>11</sup> Bottom Hole Location**

UL or lot no.	Section	Township	Range	Lot Idn	Feet from the	North/South line	Feet from the	East/West line	County
O	14	26S	30E		342'	SOUTH	2321'	EAST	EDDY
<sup>12</sup> Lse Code	<sup>13</sup> Producing Method Code FLOWING	<sup>14</sup> Gas Connection Date	<sup>15</sup> C-129 Permit Number	<sup>16</sup> C-129 Effective Date	<sup>17</sup> C-129 Expiration Date				

**III. Oil and Gas Transporters**

<sup>18</sup> Transporter OGRID	<sup>19</sup> Transporter Name and Address	<sup>20</sup> O/G/W
372812	EOGRM	OIL
151618	ENTERPRISE FIELD SERVICES	GAS
298751	REGENCY FIELD SERVICES	GAS
36785	DCP MIDSTREAM	GAS

**IV. Well Completion Data**

<sup>21</sup> Spud Date 07/16/2022	<sup>22</sup> Ready Date 12/01/2022	<sup>23</sup> TD 19,319'	<sup>24</sup> PBDT 19,279'	<sup>25</sup> Perforations 12,074 - 19,279'	<sup>26</sup> DHC, MC
<sup>27</sup> Hole Size	<sup>28</sup> Casing & Tubing Size	<sup>29</sup> Depth Set	<sup>30</sup> Sacks Cement		
12 1/4"	9 5/8"	1100'	450 SXS CL C/CIRC		
8 3/4"	7 5/8"	11,341'	1470 SXS CL C&H/89' ECHO		
6 3/4"	5 1/2"	19,287'	735 SXS CL H TOC SURF/CBL		

**V. Well Test Data**

<sup>31</sup> Date New Oil 12/01/2022	<sup>32</sup> Gas Delivery Date 12/01/2022	<sup>33</sup> Test Date 12/14/2022	<sup>34</sup> Test Length 24 HRS	<sup>35</sup> Tbg. Pressure	<sup>36</sup> Csg. Pressure 2623
<sup>37</sup> Choke Size	<sup>38</sup> Oil 1266	<sup>39</sup> Water 10,687	<sup>40</sup> Gas 15,203		<sup>41</sup> Test Method

<sup>42</sup> I hereby certify that the rules of the Oil Conservation Division have been complied with and that the information given above is true and complete to the best of my knowledge and belief. Signature: <b>Kay Maddox</b> Printed name: Kay Maddox Title: SENIOR REGULATORY SPECIALIST E-mail Address: kay_maddox@eogresources.com Date: 01/09/2023 Phone: 432-638-8475	OIL CONSERVATION DIVISION	
	Approved by:	
	Title:	
	Approval Date:	

DISTRICT I  
1625 N. French Dr., Hobbs, NM 88240  
Phone: (575) 393-6161 Fax: (575) 393-0720  
DISTRICT II  
811 S. First St., Artesia, NM 88210  
Phone: (575) 748-1283 Fax: (575) 748-9720  
DISTRICT III  
1000 Rio Brazos Rd., Aztec, NM 87410  
Phone: (505) 334-6178 Fax: (505) 334-6170  
DISTRICT IV  
1220 S. St. Francis Dr., Santa Fe, NM 87505  
Phone: (505) 476-3460 Fax: (505) 476-3462

State of New Mexico  
Energy, Minerals & Natural Resources Department  
OIL CONSERVATION DIVISION  
1220 South St. Francis Dr.  
Santa Fe, New Mexico 87505

As-Completed Plat  
Revised August 1, 2011  
Submit one copy to appropriate  
District Office  
 AMENDED REPORT

AS-COMPLETED PLAT

API Number <b>30-015- 49545</b>	Pool Code <b>98220</b>	Pool Name <b>PURPLE SAGE; WOLFCAMP (GAS)</b>
Property Code <b>332869</b>	Property Name <b>MIDNIGHT HOUR 11 FED COM</b>	Well Number <b>763H</b>
OGRID No. <b>7377</b>	Operator Name <b>EOG RESOURCES, INC.</b>	Elevation <b>3181'</b>

Surface Location

UL or lot no.	Section	Township	Range	Lot Idn	Feet from the	North/South line	Feet from the	East/West line	County
<b>G</b>	<b>11</b>	<b>26 S</b>	<b>30 E</b>		<b>2555</b>	<b>NORTH</b>	<b>1786</b>	<b>EAST</b>	<b>EDDY</b>

Bottom Hole Location If Different From Surface

UL or lot no.	Section	Township	Range	Lot Idn	Feet from the	North/South line	Feet from the	East/West line	County
<b>O</b>	<b>14</b>	<b>26 S</b>	<b>30 E</b>		<b>342</b>	<b>SOUTH</b>	<b>2321</b>	<b>EAST</b>	<b>EDDY</b>
Dedicated Acres <b>960.00</b>	Joint or Infill	Consolidated Code	Order No.						

No allowable will be assigned to this completion until all interests have been consolidated or a non-standard unit has been approved by the division.

**SURFACE LOCATION**  
NEW MEXICO EAST  
NAD 1983  
X = 691359'  
Y = 385025'  
LAT. = N 32.057587°  
LONG. = W 103.849074°  
NAD 1927  
X = 650173'  
Y = 384967'  
LAT. = N 32.057462°  
LONG. = W 103.848596°

**KICK OFF POINT**  
NEW MEXICO EAST  
NAD 1983  
X = 690823'  
Y = 384803'  
LAT. = N 32.056985°  
LON. = W 103.850807°  
NAD 1927  
X = 649637'  
Y = 384745'  
LAT. = N 32.056860°  
LONG. = W 103.850329°  
MD. = 11,553'

**FIRST TAKE POINT**  
NEW MEXICO EAST  
NAD 1983  
X = 690821'  
Y = 384502'  
LAT. = N 32.056158°  
LON. = W 103.850817°  
NAD 1927  
X = 649635'  
Y = 384445'  
LAT. = N 32.056033°  
LONG. = W 103.850339°  
MD. = 12,074'

**BOTTOM HOLE LOCATION**  
NEW MEXICO EAST  
NAD 1983  
X = 690857'  
Y = 377272'  
LAT. = N 32.036283°  
LONG. = W 103.850806°  
NAD 1927  
X = 649671'  
Y = 377215'  
LAT. = N 32.036158°  
LONG. = W 103.850329°  
MD. = 19,319'

**LAST TAKE POINT**  
NEW MEXICO EAST  
NAD 1983  
X = 690853'  
Y = 377312'  
LAT. = N 32.036393°  
LON. = W 103.850817°  
NAD 1927  
X = 649667'  
Y = 377255'  
LAT. = N 32.036268°  
LONG. = W 103.850340°  
MD. = 19,279'

**POINT/UTM ZONE 13 COORDINATES**  
SHL X=1996867.2 Y=11633421.7  
KOP X=1996332.7 Y=11638197.1  
FTP X=1996332.8 Y=11637896.3  
LTP X=1996409.3 Y=11630707.9  
BHL X=1996413.2 Y=11630668.0

**OPERATOR CERTIFICATION**

*I hereby certify that the information contained herein is true and complete to the best of my knowledge and belief, and that this organization either owns a working interest or unleased mineral interest in the land including the proposed bottom hole location or has a right to drill this well at this location pursuant to a contract with an owner of such a mineral or working interest, or to voluntary pooling agreement or a compulsory pooling order heretofore entered by the division.*

*Kay Maddox* 12/19/2022  
Signature Date

**KAY MADDOX**  
Print Name

**KAY.MADDOX@EOGRESOURCES.COM**  
E-mail Address

**SURVEYORS CERTIFICATION**

*I hereby certify that the well location shown on this plat was plotted from field notes of actual surveys made by me or under my supervision, and that the same is true and correct to the best of my belief.*

**MAY 24, 2022**  
Date of Survey



## Midland

Eddy County, NM (NAD 83 NME)  
Midnight Hour 11 Fed Com  
#763H  
OH

Survey: Total MWD

## Final PVA

10 October, 2022





Final PVA



<b>Company:</b>	Midland	<b>Local Co-ordinate Reference:</b>	Well #763H
<b>Project:</b>	Eddy County, NM (NAD 83 NME)	<b>TVD Reference:</b>	KB = 25' @ 3206.0usft
<b>Site:</b>	Midnight Hour 11 Fed Com	<b>MD Reference:</b>	KB = 25' @ 3206.0usft
<b>Well:</b>	#763H	<b>North Reference:</b>	Grid
<b>Wellbore:</b>	OH	<b>Survey Calculation Method:</b>	Minimum Curvature
<b>Design:</b>	OH	<b>Database:</b>	PEDM

<b>Project</b>	Eddy County, NM (NAD 83 NME)		
<b>Map System:</b>	US State Plane 1983	<b>System Datum:</b>	Mean Sea Level
<b>Geo Datum:</b>	North American Datum 1983		
<b>Map Zone:</b>	New Mexico Eastern Zone		

<b>Site</b>	Midnight Hour 11 Fed Com				
<b>Site Position:</b>		<b>Northing:</b>	384,955.00 usft	<b>Latitude:</b>	32° 3' 26.684 N
<b>From:</b>	Map	<b>Easting:</b>	690,054.00 usft	<b>Longitude:</b>	103° 51' 11.834 W
<b>Position Uncertainty:</b>	0.0 usft	<b>Slot Radius:</b>	13-3/16 "	<b>Grid Convergence:</b>	0.25 °

<b>Well</b>	#763H					
<b>Well Position</b>	<b>+N/-S</b>	0.0 usft	<b>Northing:</b>	385,025.00 usft	<b>Latitude:</b>	32° 3' 27.319 N
	<b>+E/-W</b>	0.0 usft	<b>Easting:</b>	691,359.00 usft	<b>Longitude:</b>	103° 50' 56.666 W
<b>Position Uncertainty</b>		0.0 usft	<b>Wellhead Elevation:</b>	usft	<b>Ground Level:</b>	3,181.0 usft

<b>Wellbore</b>	OH				
<b>Magnetics</b>	<b>Model Name</b>	<b>Sample Date</b>	<b>Declination (°)</b>	<b>Dip Angle (°)</b>	<b>Field Strength (nT)</b>
	IGRF2020	9/28/2022	6.51	59.66	47,234.90144902

<b>Design</b>	OH				
<b>Audit Notes:</b>					
<b>Version:</b>	1.0	<b>Phase:</b>	ACTUAL	<b>Tie On Depth:</b>	0.0
<b>Vertical Section:</b>		<b>Depth From (TVD) (usft)</b>	<b>+N/-S (usft)</b>	<b>+E/-W (usft)</b>	<b>Direction (°)</b>
		0.0	0.0	0.0	183.77

<b>Survey Program</b>	<b>Date</b>	10/10/2022			
<b>From (usft)</b>	<b>To (usft)</b>	<b>Survey (Wellbore)</b>	<b>Tool Name</b>	<b>Description</b>	
199.0	19,319.0	Total MWD (OH)	EOG MWD+IFR1	MWD + IFR1	



Final PVA



<b>Company:</b>	Midland	<b>Local Co-ordinate Reference:</b>	Well #763H
<b>Project:</b>	Eddy County, NM (NAD 83 NME)	<b>TVD Reference:</b>	KB = 25' @ 3206.0usft
<b>Site:</b>	Midnight Hour 11 Fed Com	<b>MD Reference:</b>	KB = 25' @ 3206.0usft
<b>Well:</b>	#763H	<b>North Reference:</b>	Grid
<b>Wellbore:</b>	OH	<b>Survey Calculation Method:</b>	Minimum Curvature
<b>Design:</b>	OH	<b>Database:</b>	PEDM

Survey											
MD (usft)	Inc (°)	Azi (azimuth) (°)	TVD (usft)	N/S (usft)	E/W (usft)	DLeg (°/100usft)	Build (°/100usft)	Turn (°/100usft)	High to Plan (usft)	Right to Plan (usft)	
0.0	0.00	0.00	0.0	0.0	0.0	0.00	0.00	0.00	0.0	0.0	0.0
199.0	0.84	151.20	199.0	-1.3	0.7	0.42	0.42	0.00	-1.5	0.0	
337.0	1.05	167.37	337.0	-3.4	1.5	0.24	0.15	11.72	-3.6	0.7	
377.0	1.01	170.27	377.0	-4.1	1.6	0.16	-0.10	7.25	-4.3	0.9	
505.0	1.71	217.12	504.9	-6.7	0.6	0.98	0.55	36.60	-5.0	4.6	
642.0	2.15	263.88	641.9	-8.6	-3.1	1.16	0.32	34.13	-4.0	8.3	
741.0	2.33	260.36	740.8	-9.2	-7.0	0.23	0.18	-3.56	-8.4	7.9	
836.0	2.33	268.71	835.7	-9.5	-10.8	0.36	0.00	8.79	-11.0	9.3	
931.0	2.46	266.16	930.6	-9.7	-14.8	0.18	0.14	-2.68	-15.4	8.7	
1,049.0	2.42	260.01	1,048.5	-10.3	-19.8	0.22	-0.03	-5.21	-21.2	6.7	
1,141.0	2.33	267.64	1,140.4	-10.7	-23.5	0.36	-0.10	8.29	-24.0	9.8	
1,236.0	1.93	297.34	1,235.4	-10.1	-26.9	1.22	-0.42	31.26	-19.2	21.3	
1,331.0	6.29	269.31	1,330.1	-9.4	-33.5	4.92	4.59	-29.51	-33.5	9.0	
1,426.0	6.29	271.68	1,424.5	-9.3	-43.9	0.27	0.00	2.49	-41.0	9.7	
1,521.0	6.33	271.86	1,519.0	-9.0	-54.4	0.05	0.04	0.19	-46.0	7.9	
1,616.0	6.81	265.26	1,613.3	-9.3	-65.2	0.94	0.51	-6.95	-48.7	0.0	
1,711.0	7.65	250.76	1,707.6	-11.8	-76.8	2.11	0.88	-15.26	-47.1	-13.2	
1,806.0	7.47	252.69	1,801.8	-15.8	-88.7	0.33	-0.19	2.03	-47.6	-11.4	
1,901.0	6.95	244.61	1,896.0	-20.1	-99.7	1.20	-0.55	-8.51	-45.2	-17.1	
1,996.0	6.77	236.70	1,990.3	-25.6	-109.6	1.01	-0.19	-8.33	-41.8	-20.6	
2,090.0	6.73	240.30	2,083.7	-31.4	-119.0	0.45	-0.04	3.83	-42.1	-15.0	
2,185.0	6.90	242.50	2,178.0	-36.8	-128.9	0.33	0.18	2.32	-41.7	-11.0	
2,280.0	7.25	249.44	2,272.3	-41.5	-139.6	0.97	0.37	7.31	-42.0	-4.6	
2,375.0	7.08	259.81	2,366.6	-44.7	-151.0	1.37	-0.18	10.92	-41.7	2.5	
2,470.0	6.99	259.38	2,460.9	-46.8	-162.4	0.11	-0.09	-0.45	-41.0	0.7	
2,564.0	6.77	262.98	2,554.2	-48.5	-173.5	0.51	-0.23	3.83	-40.1	1.4	
2,659.0	6.33	262.54	2,648.6	-49.8	-184.3	0.47	-0.46	-0.46	-38.8	-1.1	



Final PVA



<b>Company:</b>	Midland	<b>Local Co-ordinate Reference:</b>	Well #763H
<b>Project:</b>	Eddy County, NM (NAD 83 NME)	<b>TVD Reference:</b>	KB = 25' @ 3206.0usft
<b>Site:</b>	Midnight Hour 11 Fed Com	<b>MD Reference:</b>	KB = 25' @ 3206.0usft
<b>Well:</b>	#763H	<b>North Reference:</b>	Grid
<b>Wellbore:</b>	OH	<b>Survey Calculation Method:</b>	Minimum Curvature
<b>Design:</b>	OH	<b>Database:</b>	PEDM

Survey											
MD (usft)	Inc (°)	Azi (azimuth) (°)	TVD (usft)	N/S (usft)	E/W (usft)	DLeg (°/100usft)	Build (°/100usft)	Turn (°/100usft)	High to Plan (usft)	Right to Plan (usft)	
2,754.0	6.24	262.80	2,743.0	-51.2	-194.6	0.10	-0.09	0.27	-37.0	-3.1	
2,849.0	5.54	262.98	2,837.5	-52.4	-204.3	0.74	-0.74	0.19	-34.6	-5.2	
2,944.0	4.97	265.26	2,932.1	-53.3	-212.9	0.64	-0.60	2.40	-31.4	-6.4	
3,039.0	4.13	265.79	3,026.8	-53.9	-220.4	0.89	-0.88	0.56	-26.9	-8.9	
3,134.0	4.31	249.44	3,121.5	-55.4	-227.2	1.28	0.19	-17.21	-17.8	-16.4	
3,229.0	5.63	236.52	3,216.2	-59.2	-234.4	1.81	1.39	-13.60	-10.0	-17.3	
3,324.0	5.27	239.78	3,310.7	-64.0	-242.1	0.50	-0.38	3.43	-7.9	-13.7	
3,419.0	5.71	226.94	3,405.3	-69.4	-249.3	1.37	0.46	-13.52	-2.5	-10.8	
3,514.0	6.77	229.40	3,499.7	-76.3	-257.0	1.15	1.12	2.59	-1.8	-5.6	
3,609.0	6.20	223.43	3,594.1	-83.6	-264.8	0.93	-0.60	-6.28	-1.1	-0.3	
3,704.0	7.78	244.17	3,688.4	-90.2	-274.1	3.11	1.66	21.83	-0.2	3.7	
3,800.0	8.35	247.07	3,783.5	-95.7	-286.4	0.73	0.59	3.02	-1.0	5.2	
3,895.0	7.91	244.61	3,877.5	-101.2	-298.6	0.59	-0.46	-2.59	-2.4	6.6	
3,990.0	8.00	242.68	3,971.6	-107.0	-310.4	0.30	0.09	-2.03	-3.6	8.4	
4,085.0	8.00	240.57	4,065.7	-113.3	-322.0	0.31	0.00	-2.22	-5.0	10.6	
4,180.0	7.69	240.22	4,159.8	-119.7	-333.3	0.33	-0.33	-0.37	-6.0	13.1	
4,275.0	7.16	238.28	4,254.0	-126.0	-343.9	0.62	-0.56	-2.04	-6.7	15.8	
4,370.0	7.16	238.02	4,348.3	-132.2	-353.9	0.03	0.00	-0.27	-6.7	18.8	
4,465.0	6.95	236.26	4,442.6	-138.6	-363.7	0.32	-0.22	-1.85	-7.0	21.9	
4,559.0	6.77	233.80	4,535.9	-145.0	-372.9	0.37	-0.19	-2.62	-7.6	25.2	
4,654.0	6.46	233.36	4,630.2	-151.5	-381.7	0.33	-0.33	-0.46	-7.0	29.2	
4,749.0	6.15	240.30	4,724.7	-157.2	-390.5	0.87	-0.33	7.31	-1.8	33.1	
4,844.0	7.21	259.90	4,819.0	-160.8	-400.7	2.63	1.12	20.63	10.9	31.9	
4,938.0	6.59	257.70	4,912.4	-163.0	-411.8	0.72	-0.66	-2.34	10.5	31.0	
5,034.0	6.55	255.07	5,007.7	-165.5	-422.5	0.32	-0.04	-2.74	10.6	30.6	
5,128.0	6.51	253.40	5,101.1	-168.4	-432.8	0.21	-0.04	-1.78	11.3	30.6	
5,223.0	6.20	252.61	5,195.5	-171.5	-442.8	0.34	-0.33	-0.83	12.7	30.6	



Final PVA



<b>Company:</b>	Midland	<b>Local Co-ordinate Reference:</b>	Well #763H
<b>Project:</b>	Eddy County, NM (NAD 83 NME)	<b>TVD Reference:</b>	KB = 25' @ 3206.0usft
<b>Site:</b>	Midnight Hour 11 Fed Com	<b>MD Reference:</b>	KB = 25' @ 3206.0usft
<b>Well:</b>	#763H	<b>North Reference:</b>	Grid
<b>Wellbore:</b>	OH	<b>Survey Calculation Method:</b>	Minimum Curvature
<b>Design:</b>	OH	<b>Database:</b>	PEDM

Survey												
MD (usft)	Inc (°)	Azi (azimuth) (°)	TVD (usft)	N/S (usft)	E/W (usft)	DLeg (°/100usft)	Build (°/100usft)	Turn (°/100usft)	High to Plan (usft)	Right to Plan (usft)		
5,318.0	4.44	280.12	5,290.1	-172.4	-451.4	3.21	-1.85	28.96	28.2	18.0		
5,413.0	2.95	302.70	5,384.9	-170.4	-457.0	2.16	-1.57	23.77	35.0	-2.2		
5,508.0	2.07	343.05	5,479.9	-167.5	-459.6	2.02	-0.93	42.47	21.7	-35.1		
5,603.0	2.07	328.81	5,574.8	-164.4	-461.0	0.54	0.00	-14.99	28.7	-39.3		
5,698.0	2.11	327.14	5,669.7	-161.4	-462.8	0.08	0.04	-1.76	28.2	-45.5		
5,793.0	1.76	333.12	5,764.7	-158.7	-464.4	0.42	-0.37	6.29	20.7	-52.0		
5,888.0	1.58	330.04	5,859.6	-156.2	-465.7	0.21	-0.19	-3.24	20.9	-51.8		
5,983.0	1.58	320.81	5,954.6	-154.1	-467.2	0.27	0.00	-9.72	26.3	-48.0		
6,078.0	1.58	317.47	6,049.6	-152.1	-468.9	0.10	0.00	-3.52	26.4	-46.4		
6,172.0	1.63	310.70	6,143.5	-150.3	-470.8	0.21	0.05	-7.20	29.1	-43.1		
6,362.0	1.54	295.85	6,333.5	-147.4	-475.2	0.22	-0.05	-7.82	34.0	-34.9		
6,457.0	1.36	288.20	6,428.4	-146.5	-477.4	0.28	-0.19	-8.05	36.0	-30.3		
6,552.0	1.36	273.70	6,523.4	-146.1	-479.6	0.36	0.00	-15.26	40.2	-20.6		
6,647.0	1.10	281.26	6,618.4	-145.8	-481.6	0.32	-0.27	7.96	35.1	-25.5		
6,742.0	0.79	279.68	6,713.4	-145.5	-483.1	0.33	-0.33	-1.66	34.2	-24.6		
6,837.0	0.79	288.03	6,808.4	-145.2	-484.4	0.12	0.00	8.79	29.0	-29.2		
6,932.0	0.84	253.22	6,903.3	-145.2	-485.7	0.52	0.05	-36.64	39.2	-7.8		
7,027.0	0.70	244.43	6,998.3	-145.7	-486.9	0.19	-0.15	-9.25	38.7	-1.8		
7,122.0	0.84	241.36	7,093.3	-146.2	-488.0	0.15	0.15	-3.23	37.5	0.2		
7,217.0	0.88	217.80	7,188.3	-147.2	-489.1	0.37	0.04	-24.80	32.9	14.9		
7,312.0	0.97	212.62	7,283.3	-148.4	-490.0	0.13	0.09	-5.45	29.9	17.7		
7,407.0	1.01	217.10	7,378.3	-149.8	-490.9	0.09	0.04	4.72	29.5	15.4		
7,502.0	1.27	213.32	7,473.3	-151.3	-492.0	0.28	0.27	-3.98	26.5	17.3		
7,597.0	1.10	223.08	7,568.3	-152.8	-493.2	0.28	-0.18	10.27	27.1	12.7		
7,692.0	1.05	231.69	7,663.2	-154.0	-494.5	0.18	-0.05	9.06	27.0	8.6		
7,787.0	1.36	239.60	7,758.2	-155.2	-496.1	0.37	0.33	8.33	25.9	5.0		
7,882.0	1.63	234.85	7,853.2	-156.5	-498.2	0.31	0.28	-5.00	22.9	7.0		



Final PVA



<b>Company:</b>	Midland	<b>Local Co-ordinate Reference:</b>	Well #763H
<b>Project:</b>	Eddy County, NM (NAD 83 NME)	<b>TVD Reference:</b>	KB = 25' @ 3206.0usft
<b>Site:</b>	Midnight Hour 11 Fed Com	<b>MD Reference:</b>	KB = 25' @ 3206.0usft
<b>Well:</b>	#763H	<b>North Reference:</b>	Grid
<b>Wellbore:</b>	OH	<b>Survey Calculation Method:</b>	Minimum Curvature
<b>Design:</b>	OH	<b>Database:</b>	PEDM

Survey												
MD (usft)	Inc (°)	Azi (azimuth) (°)	TVD (usft)	N/S (usft)	E/W (usft)	DLeg (°/100usft)	Build (°/100usft)	Turn (°/100usft)	High to Plan (usft)	Right to Plan (usft)		
7,977.0	1.41	241.01	7,948.2	-157.9	-500.4	0.29	-0.23	6.48	21.0	4.6		
8,072.0	1.36	237.14	8,043.1	-159.0	-502.3	0.11	-0.05	-4.07	18.4	6.0		
8,167.0	1.76	243.82	8,138.1	-160.3	-504.6	0.46	0.42	7.03	16.4	3.9		
8,261.0	1.58	260.17	8,232.0	-161.1	-507.1	0.54	-0.19	17.39	14.1	-0.4		
8,356.0	1.58	283.90	8,327.0	-161.1	-509.7	0.68	0.00	24.98	10.2	-5.6		
8,451.0	1.71	279.59	8,422.0	-160.5	-512.4	0.19	0.14	-4.54	7.9	-4.9		
8,546.0	1.67	252.61	8,516.9	-160.7	-515.1	0.83	-0.04	-28.40	6.6	-1.4		
8,641.0	1.80	249.44	8,611.9	-161.6	-517.8	0.17	0.14	-3.34	3.8	-1.1		
8,736.0	1.58	248.21	8,706.9	-162.6	-520.4	0.23	-0.23	-1.29	1.0	-1.1		
8,831.0	1.45	248.21	8,801.8	-163.6	-522.8	0.14	-0.14	0.00	-1.5	-1.1		
8,926.0	1.63	255.42	8,896.8	-164.3	-525.2	0.28	0.19	7.59	-4.1	-0.7		
9,021.0	1.32	224.40	8,991.8	-165.5	-527.3	0.89	-0.33	-32.65	-5.4	-3.4		
9,115.0	1.45	215.52	9,085.7	-167.2	-528.7	0.27	0.14	-9.45	-7.1	-4.4		
9,211.0	0.92	195.83	9,181.7	-168.9	-529.6	0.69	-0.55	-20.51	-7.1	-6.9		
9,305.0	1.49	170.25	9,275.7	-170.9	-529.6	0.82	0.61	-27.21	-5.3	-9.7		
9,400.0	2.15	170.17	9,370.6	-173.8	-529.1	0.69	0.69	-0.08	-8.3	-9.7		
9,496.0	2.42	170.43	9,466.6	-177.6	-528.5	0.28	0.28	0.27	-12.2	-9.6		
9,591.0	1.54	142.31	9,561.5	-180.6	-527.4	1.35	-0.93	-29.60	-9.3	-15.2		
9,686.0	1.41	141.95	9,656.5	-182.5	-525.9	0.14	-0.14	-0.38	-11.6	-15.2		
9,781.0	1.67	164.98	9,751.4	-184.8	-524.8	0.70	0.27	24.24	-19.1	-9.0		
9,876.0	1.10	166.30	9,846.4	-187.0	-524.2	0.60	-0.60	1.39	-21.6	-8.6		
9,970.0	0.97	153.99	9,940.4	-188.6	-523.6	0.27	-0.14	-13.10	-21.0	-13.2		
10,065.0	1.01	145.38	10,035.4	-190.0	-522.8	0.16	0.04	-9.06	-20.4	-16.3		
10,160.0	0.92	183.17	10,130.4	-191.5	-522.4	0.66	-0.09	39.78	-27.5	0.1		
10,255.0	0.75	191.61	10,225.4	-192.8	-522.5	0.22	-0.18	8.88	-28.6	4.3		
10,350.0	0.92	192.84	10,320.3	-194.2	-522.8	0.18	0.18	1.29	-29.8	4.9		
10,445.0	0.84	190.29	10,415.3	-195.6	-523.1	0.09	-0.08	-2.68	-31.5	3.6		



Final PVA



<b>Company:</b>	Midland	<b>Local Co-ordinate Reference:</b>	Well #763H
<b>Project:</b>	Eddy County, NM (NAD 83 NME)	<b>TVD Reference:</b>	KB = 25' @ 3206.0usft
<b>Site:</b>	Midnight Hour 11 Fed Com	<b>MD Reference:</b>	KB = 25' @ 3206.0usft
<b>Well:</b>	#763H	<b>North Reference:</b>	Grid
<b>Wellbore:</b>	OH	<b>Survey Calculation Method:</b>	Minimum Curvature
<b>Design:</b>	OH	<b>Database:</b>	PEDM

Survey												
MD (usft)	Inc (°)	Azi (azimuth) (°)	TVD (usft)	N/S (usft)	E/W (usft)	DLeg (°/100usft)	Build (°/100usft)	Turn (°/100usft)	High to Plan (usft)	Right to Plan (usft)		
10,540.0	0.92	226.24	10,510.3	-196.8	-523.8	0.58	0.08	37.84	-24.7	21.8		
10,635.0	1.14	226.42	10,605.3	-198.0	-525.0	0.23	0.23	0.19	-26.4	21.9		
10,730.0	1.27	220.44	10,700.3	-199.5	-526.4	0.19	0.14	-6.29	-30.5	18.9		
10,825.0	1.27	214.46	10,795.3	-201.1	-527.7	0.14	0.00	-6.29	-34.4	15.5		
10,920.0	1.27	207.43	10,890.2	-202.9	-528.8	0.16	0.00	-7.40	-38.1	11.0		
11,015.0	1.49	194.78	10,985.2	-205.1	-529.6	0.39	0.23	-13.32	-41.9	2.2		
11,110.0	1.63	211.39	11,080.2	-207.4	-530.6	0.50	0.15	17.48	-42.1	14.4		
11,205.0	1.85	212.97	11,175.1	-209.9	-532.1	0.24	0.23	1.66	-44.5	15.6		
11,303.0	2.37	196.71	11,273.1	-213.1	-533.6	0.80	0.53	-16.59	-50.7	2.1		
11,363.0	2.24	200.84	11,333.0	-215.4	-534.3	0.35	-0.22	6.88	-52.8	5.8		
11,458.0	1.63	199.26	11,428.0	-218.4	-535.4	0.64	-0.64	-1.66	-56.1	4.3		
11,553.0	2.29	182.82	11,522.9	-221.6	-536.0	0.91	0.69	-17.31	-56.8	-12.2		
<b>KOP, MD:11553.0', TVD:11522.9',N/S:-221.6', E/W:-536.0', INC:2.29</b>												
11,648.0	19.30	184.40	11,615.9	-239.3	-537.3	17.91	17.91	1.66	-56.3	-11.4		
11,743.0	30.68	179.66	11,701.9	-279.3	-538.4	12.15	11.98	-4.99	-56.6	-15.2		
11,838.0	40.04	180.71	11,779.3	-334.2	-538.6	9.87	9.85	1.11	-53.9	-12.3		
11,933.0	51.43	180.62	11,845.5	-402.1	-539.4	11.99	11.99	-0.09	-47.0	-10.3		
11,987.3	56.10	179.52	11,877.5	-445.9	-539.4	8.75	8.59	-2.02	-41.2	-9.0		
<b>FTP Crossing, MD:11987.3', TVD:11877.5',N/S:-445.9', E/W:-539.4', INC:56.10</b>												
12,028.0	59.60	178.78	11,899.2	-480.4	-538.9	8.75	8.61	-1.83	-35.4	-7.1		
12,123.0	71.60	178.08	11,938.4	-566.7	-536.5	12.65	12.63	-0.74	-20.5	-1.0		
12,218.0	78.59	178.69	11,962.8	-658.4	-533.9	7.38	7.36	0.64	-2.0	5.1		
12,313.0	89.89	180.45	11,972.3	-752.7	-533.2	12.04	11.89	1.85	8.5	6.6		
12,408.0	89.27	178.60	11,973.0	-847.7	-532.5	2.05	-0.65	-1.95	10.2	7.0		
12,503.0	91.03	178.16	11,972.8	-942.7	-529.8	1.91	1.85	-0.46	10.9	9.2		
12,598.0	92.92	177.37	11,969.5	-1,037.6	-526.1	2.16	1.99	-0.83	8.6	12.5		
12,693.0	91.96	180.54	11,965.4	-1,132.4	-524.3	3.48	-1.01	3.34	5.5	13.9		



Final PVA



<b>Company:</b>	Midland	<b>Local Co-ordinate Reference:</b>	Well #763H
<b>Project:</b>	Eddy County, NM (NAD 83 NME)	<b>TVD Reference:</b>	KB = 25' @ 3206.0usft
<b>Site:</b>	Midnight Hour 11 Fed Com	<b>MD Reference:</b>	KB = 25' @ 3206.0usft
<b>Well:</b>	#763H	<b>North Reference:</b>	Grid
<b>Wellbore:</b>	OH	<b>Survey Calculation Method:</b>	Minimum Curvature
<b>Design:</b>	OH	<b>Database:</b>	PEDM

Survey												
MD (usft)	Inc (°)	Azi (azimuth) (°)	TVD (usft)	N/S (usft)	E/W (usft)	DLeg (°/100usft)	Build (°/100usft)	Turn (°/100usft)	High to Plan (usft)	Right to Plan (usft)		
12,788.0	91.08	181.24	11,962.9	-1,227.4	-525.8	1.18	-0.93	0.74	4.0	12.0		
12,883.0	89.01	179.48	11,962.8	-1,322.4	-526.4	2.86	-2.18	-1.85	4.9	11.0		
12,978.0	90.77	178.87	11,963.0	-1,417.4	-525.0	1.96	1.85	-0.64	6.1	12.0		
13,073.0	89.01	178.96	11,963.2	-1,512.4	-523.2	1.86	-1.85	0.09	7.3	13.4		
13,168.0	89.14	178.16	11,964.7	-1,607.3	-520.9	0.85	0.14	-0.84	9.8	15.4		
13,263.0	90.59	179.40	11,965.0	-1,702.3	-518.8	2.01	1.53	1.31	11.0	17.0		
13,358.0	91.12	180.01	11,963.6	-1,797.3	-518.3	0.85	0.56	0.64	10.6	17.1		
13,453.0	92.88	181.15	11,960.2	-1,892.2	-519.3	2.21	1.85	1.20	8.2	15.7		
13,548.0	91.91	182.12	11,956.3	-1,987.1	-522.0	1.44	-1.02	1.02	5.2	12.6		
13,643.0	89.76	182.38	11,954.9	-2,082.0	-525.7	2.28	-2.26	0.27	4.8	8.5		
13,738.0	88.84	180.27	11,956.0	-2,177.0	-527.9	2.42	-0.97	-2.22	7.0	5.9		
13,833.0	89.58	181.24	11,957.4	-2,271.9	-529.2	1.28	0.78	1.02	9.3	4.2		
13,928.0	90.46	181.24	11,957.3	-2,366.9	-531.2	0.93	0.93	0.00	10.2	1.8		
14,023.0	90.33	180.27	11,956.7	-2,461.9	-532.5	1.03	-0.14	-1.02	10.6	0.1		
14,118.0	91.56	180.27	11,955.1	-2,556.9	-532.9	1.29	1.29	0.00	10.0	-0.7		
14,213.0	88.48	176.76	11,955.1	-2,651.8	-530.5	4.92	-3.24	-3.69	10.9	1.3		
14,308.0	92.40	177.37	11,954.3	-2,746.7	-525.6	4.18	4.13	0.64	11.2	5.8		
14,403.0	92.92	176.32	11,949.9	-2,841.4	-520.4	1.23	0.55	-1.11	7.8	10.6		
14,498.0	89.19	178.78	11,948.2	-2,936.3	-516.3	4.70	-3.93	2.59	7.0	14.3		
14,593.0	92.44	182.29	11,946.8	-3,031.3	-517.2	5.03	3.42	3.69	6.6	13.0		
14,687.0	90.77	180.54	11,944.2	-3,125.2	-519.5	2.57	-1.78	-1.86	5.0	10.3		
14,783.0	88.35	179.83	11,944.9	-3,221.2	-519.9	2.63	-2.52	-0.74	6.7	9.5		
14,814.0	88.00	180.19	11,945.9	-3,252.2	-519.9	1.62	-1.13	1.16	8.0	9.4		
14,846.0	87.21	179.75	11,947.3	-3,284.1	-519.8	2.83	-2.47	-1.37	9.6	9.3		
14,878.0	86.29	179.57	11,949.1	-3,316.1	-519.7	2.93	-2.87	-0.56	11.6	9.4		
14,972.0	86.11	179.92	11,955.3	-3,409.9	-519.2	0.42	-0.19	0.37	18.5	9.4		
15,067.0	90.64	181.06	11,958.0	-3,504.8	-520.0	4.92	4.77	1.20	21.9	8.2		



Final PVA



<b>Company:</b>	Midland	<b>Local Co-ordinate Reference:</b>	Well #763H
<b>Project:</b>	Eddy County, NM (NAD 83 NME)	<b>TVD Reference:</b>	KB = 25' @ 3206.0usft
<b>Site:</b>	Midnight Hour 11 Fed Com	<b>MD Reference:</b>	KB = 25' @ 3206.0usft
<b>Well:</b>	#763H	<b>North Reference:</b>	Grid
<b>Wellbore:</b>	OH	<b>Survey Calculation Method:</b>	Minimum Curvature
<b>Design:</b>	OH	<b>Database:</b>	PEDM

Survey												
MD (usft)	Inc (°)	Azi (azimuth) (°)	TVD (usft)	N/S (usft)	E/W (usft)	DLeg (°/100usft)	Build (°/100usft)	Turn (°/100usft)	High to Plan (usft)	Right to Plan (usft)		
15,162.0	88.92	179.48	11,958.4	-3,599.8	-520.5	2.46	-1.81	-1.66	22.9	7.3		
15,217.0	93.05	180.45	11,957.4	-3,654.8	-520.5	7.71	7.51	1.76	22.4	7.1		
15,301.0	87.87	179.66	11,956.7	-3,738.7	-520.5	6.24	-6.17	-0.94	22.3	6.7		
15,376.0	87.30	180.36	11,959.9	-3,813.7	-520.6	1.20	-0.76	0.93	26.0	6.4		
15,541.0	90.11	181.59	11,963.6	-3,978.6	-523.4	1.86	1.70	0.75	30.9	2.9		
15,636.0	91.56	183.70	11,962.2	-4,073.5	-527.7	2.69	1.53	2.22	30.2	-1.9		
15,731.0	90.02	179.04	11,960.9	-4,168.4	-530.0	5.17	-1.62	-4.91	29.6	-4.6		
15,826.0	91.69	178.25	11,959.5	-4,263.4	-527.8	1.94	1.76	-0.83	28.9	-2.7		
15,921.0	91.69	177.99	11,956.7	-4,358.3	-524.7	0.27	0.00	-0.27	26.7	0.0		
16,047.0	89.89	177.99	11,955.0	-4,484.2	-520.2	1.43	-1.43	0.00	25.9	3.9		
16,110.0	91.16	178.78	11,954.4	-4,547.1	-518.5	2.37	2.02	1.25	25.8	5.4		
16,205.0	90.20	177.90	11,953.3	-4,642.1	-515.7	1.37	-1.01	-0.93	25.3	7.7		
16,300.0	90.02	174.21	11,953.1	-4,736.9	-509.2	3.89	-0.19	-3.88	25.6	13.8		
16,395.0	90.77	177.72	11,952.4	-4,831.6	-502.5	3.78	0.79	3.69	25.4	20.2		
16,490.0	90.95	180.54	11,951.0	-4,926.6	-501.0	2.97	0.19	2.97	24.5	21.2		
16,584.0	91.78	181.06	11,948.8	-5,020.5	-502.4	1.04	0.88	0.55	22.7	19.5		
16,680.0	89.27	181.59	11,947.9	-5,116.5	-504.6	2.67	-2.61	0.55	22.3	16.9		
16,774.0	91.82	183.70	11,947.0	-5,210.4	-508.9	3.52	2.71	2.24	21.9	12.2		
16,869.0	88.70	185.28	11,946.6	-5,305.1	-516.4	3.68	-3.28	1.66	21.9	4.3		
16,964.0	90.55	182.38	11,947.2	-5,399.8	-522.7	3.62	1.95	-3.05	23.0	-2.4		
17,059.0	90.02	180.36	11,946.7	-5,494.8	-525.0	2.20	-0.56	-2.13	23.0	-5.1		
17,154.0	91.25	179.48	11,945.7	-5,589.8	-524.8	1.59	1.29	-0.93	22.4	-5.3		
17,249.0	90.86	178.78	11,943.9	-5,684.8	-523.4	0.84	-0.41	-0.74	21.1	-4.3		
17,349.0	89.80	177.90	11,943.3	-5,784.7	-520.5	1.38	-1.06	-0.88	21.1	-1.8		
17,444.0	89.76	178.34	11,943.7	-5,879.7	-517.4	0.47	-0.04	0.46	21.9	0.9		
17,539.0	89.76	179.40	11,944.1	-5,974.7	-515.5	1.12	0.00	1.12	22.8	2.4		
17,634.0	90.73	179.13	11,943.7	-6,069.6	-514.3	1.06	1.02	-0.28	22.8	3.2		



Final PVA



**Company:** Midland  
**Project:** Eddy County, NM (NAD 83 NME)  
**Site:** Midnight Hour 11 Fed Com  
**Well:** #763H  
**Wellbore:** OH  
**Design:** OH

**Local Co-ordinate Reference:** Well #763H  
**TVD Reference:** KB = 25' @ 3206.0usft  
**MD Reference:** KB = 25' @ 3206.0usft  
**North Reference:** Grid  
**Survey Calculation Method:** Minimum Curvature  
**Database:** PEDM

Survey												
MD (usft)	Inc (°)	Azi (azimuth) (°)	TVD (usft)	N/S (usft)	E/W (usft)	DLeg (°/100usft)	Build (°/100usft)	Turn (°/100usft)	High to Plan (usft)	Right to Plan (usft)		
17,729.0	90.51	177.55	11,942.7	-6,164.6	-511.5	1.68	-0.23	-1.66	22.3	5.6		
17,824.0	90.29	178.52	11,942.0	-6,259.5	-508.3	1.05	-0.23	1.02	22.1	8.4		
17,919.0	89.67	180.19	11,942.0	-6,354.5	-507.2	1.88	-0.65	1.76	22.6	9.1		
18,013.0	91.65	183.35	11,940.9	-6,448.5	-510.1	3.97	2.11	3.36	22.0	5.8		
18,108.0	91.03	183.26	11,938.7	-6,543.3	-515.6	0.66	-0.65	-0.09	20.2	-0.1		
18,203.0	89.14	182.91	11,938.6	-6,638.1	-520.7	2.02	-1.99	-0.37	20.6	-5.6		
18,298.0	89.14	183.26	11,940.0	-6,733.0	-525.8	0.37	0.00	0.37	22.8	-11.0		
18,393.0	91.47	183.17	11,939.5	-6,827.8	-531.1	2.45	2.45	-0.09	23.2	-16.7		
18,488.0	88.22	180.62	11,939.8	-6,922.8	-534.3	4.35	-3.42	-2.68	24.3	-20.2		
18,642.0	88.31	179.22	11,944.4	-7,076.7	-534.1	0.91	0.06	-0.91	30.3	-20.6		
18,678.0	88.48	179.13	11,945.4	-7,112.7	-533.5	0.53	0.47	-0.25	31.6	-20.2		
18,773.0	91.87	181.15	11,945.1	-7,207.6	-533.8	4.15	3.57	2.13	32.2	-20.8		
18,868.0	91.43	179.13	11,942.4	-7,302.6	-534.0	2.18	-0.46	-2.13	30.3	-21.4		
18,963.0	91.91	176.67	11,939.6	-7,397.5	-530.5	2.64	0.51	-2.59	28.4	-18.2		
19,058.0	91.65	176.23	11,936.7	-7,492.3	-524.7	0.54	-0.27	-0.46	26.3	-12.7		
19,153.0	88.40	174.65	11,936.6	-7,586.9	-517.1	3.80	-3.42	-1.66	27.1	-5.5		
19,248.0	90.55	174.91	11,937.5	-7,681.5	-508.5	2.28	2.26	0.27	28.9	2.8		
<b>Last MWD Survey (MD=19248.0')</b>												
19,319.0	90.55	174.91	11,936.8	-7,752.3	-502.2	0.00	0.00	0.00	28.8	8.8		
<b>Projection to Bit (MD=19319.0')</b>												



Final PVA



<b>Company:</b>	Midland	<b>Local Co-ordinate Reference:</b>	Well #763H
<b>Project:</b>	Eddy County, NM (NAD 83 NME)	<b>TVD Reference:</b>	KB = 25' @ 3206.0usft
<b>Site:</b>	Midnight Hour 11 Fed Com	<b>MD Reference:</b>	KB = 25' @ 3206.0usft
<b>Well:</b>	#763H	<b>North Reference:</b>	Grid
<b>Wellbore:</b>	OH	<b>Survey Calculation Method:</b>	Minimum Curvature
<b>Design:</b>	OH	<b>Database:</b>	PEDM

Survey Annotations				
Measured Depth (usft)	Vertical Depth (usft)	Local Coordinates		Comment
		+N/-S (usft)	+E/-W (usft)	
11,553.0	11,522.9	-221.6	-536.0	KOP, MD:11553.0', TVD:11522.9',N/S:-221.6', E/W:-536.0', INC:2.29
11,987.3	11,877.5	-445.9	-539.4	FTP Crossing, MD:11987.3', TVD:11877.5',N/S:-445.9', E/W:-539.4', INC:56.10
19,248.0	11,937.5	-7,681.5	-508.5	Last MWD Survey (MD=19248.0')
19,319.0	11,936.8	-7,752.3	-502.2	Projection to Bit (MD=19319.0')

Checked By: \_\_\_\_\_ Approved By: \_\_\_\_\_ Date: \_\_\_\_\_

I CERTIFY THIS SURVEY TO BE TRUE AND CORRECT TO THE BEST OF MY BELIEF AND KNOWLEDGE  
 KAY MADDOX 12/19/2022



# Eddy County, NM (NAD 83 NME)

Midnight Hour 11 Fed Com #763H

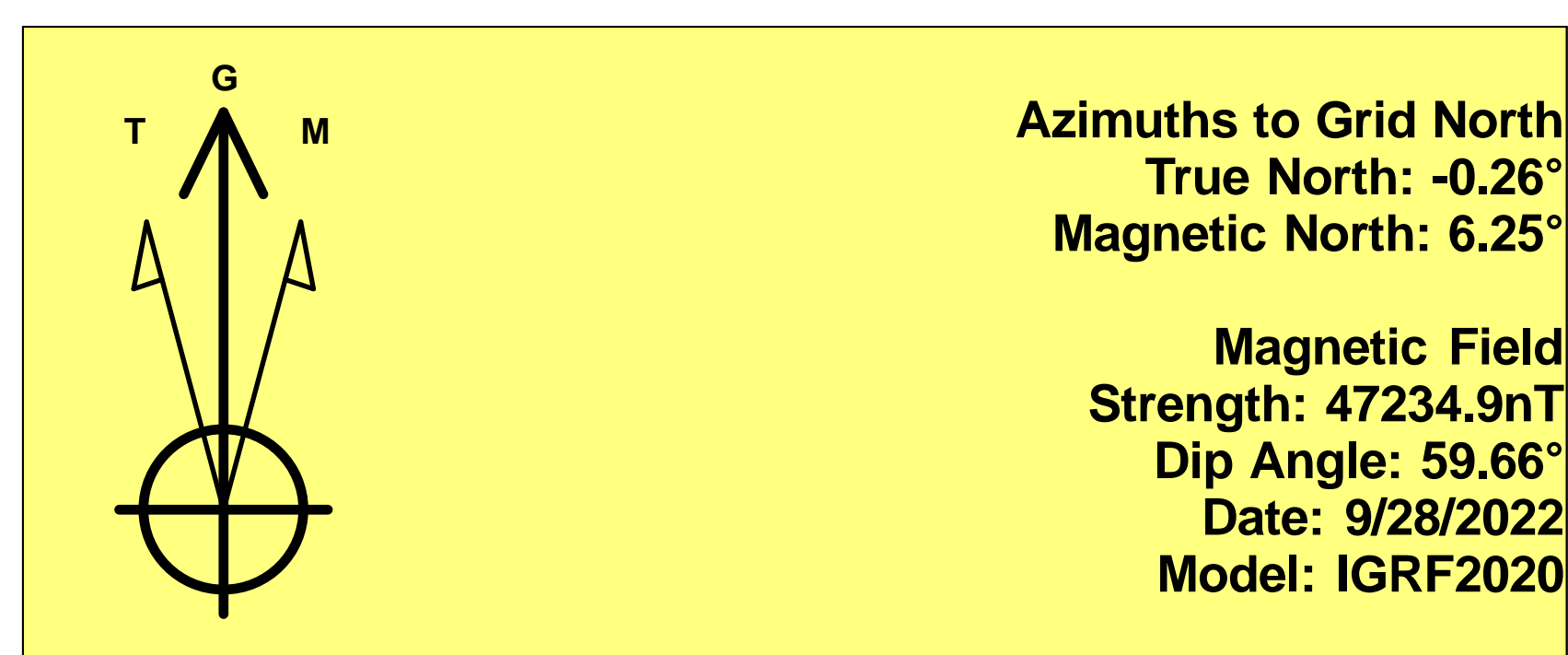
OH

## PROJECT DETAILS: Eddy County, NM (NAD 83 NME)

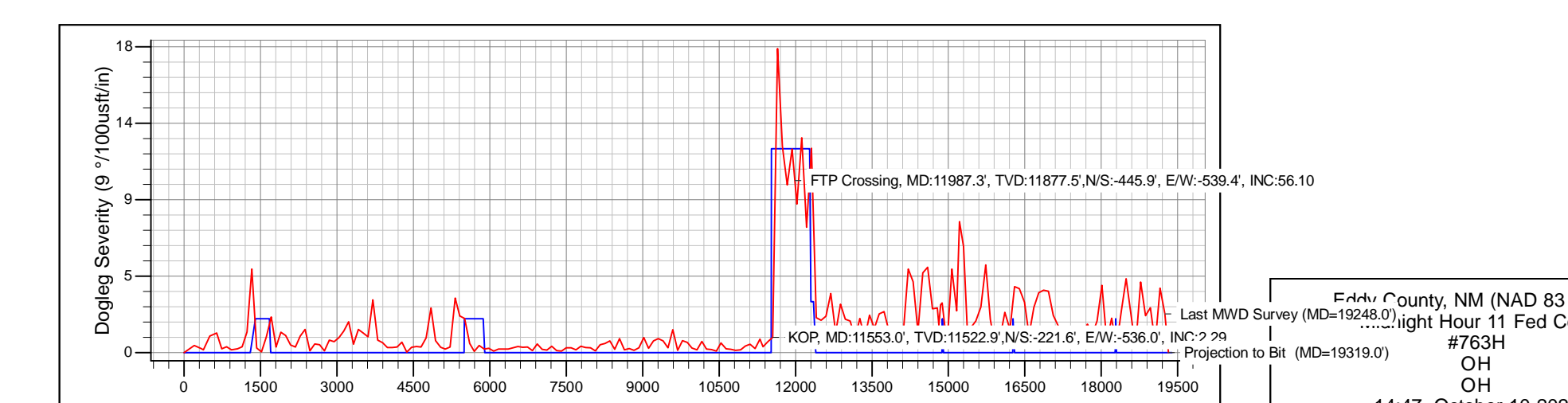
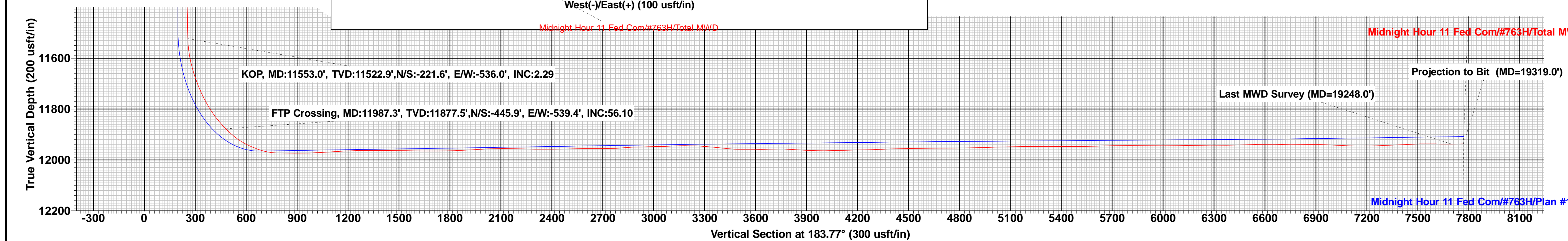
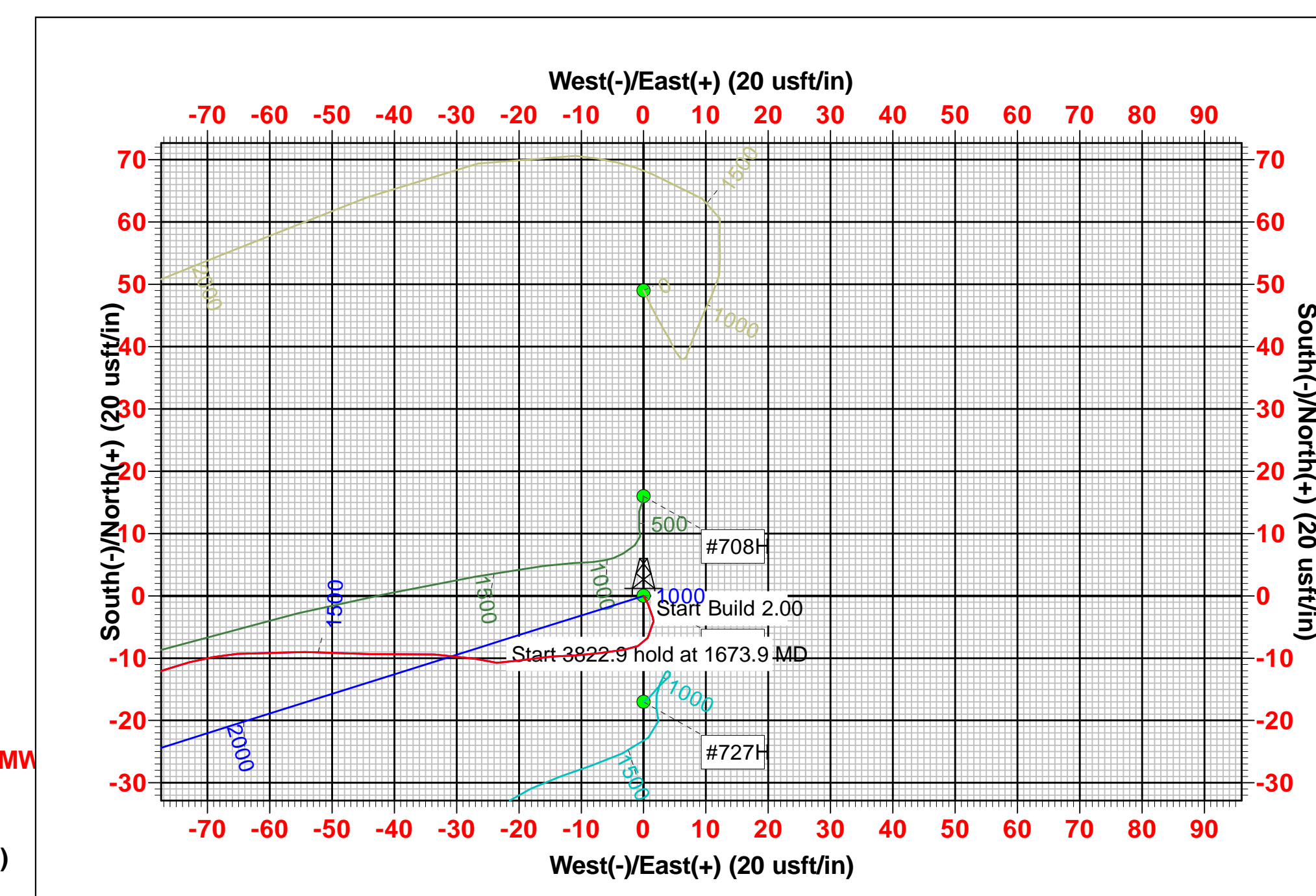
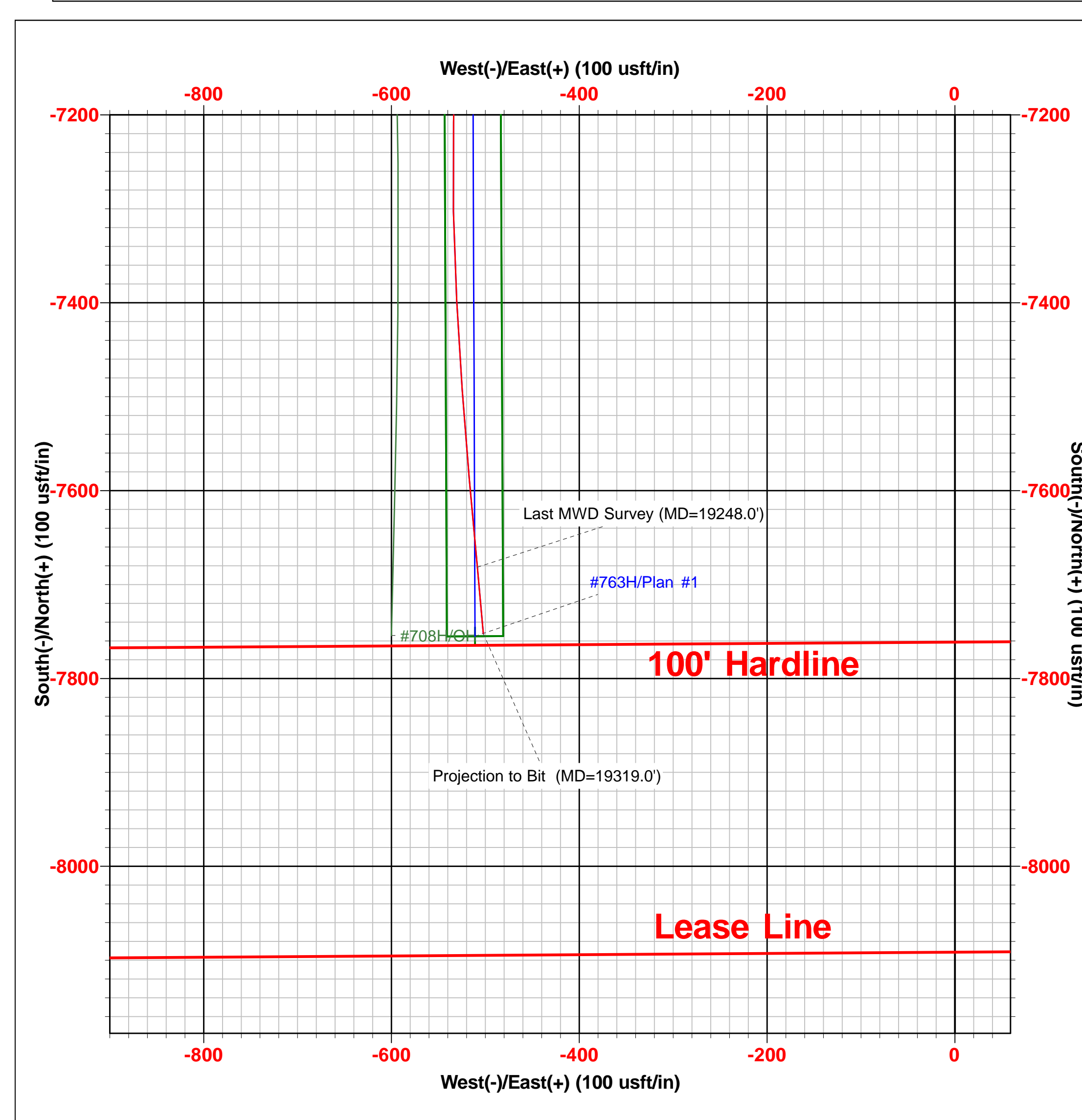
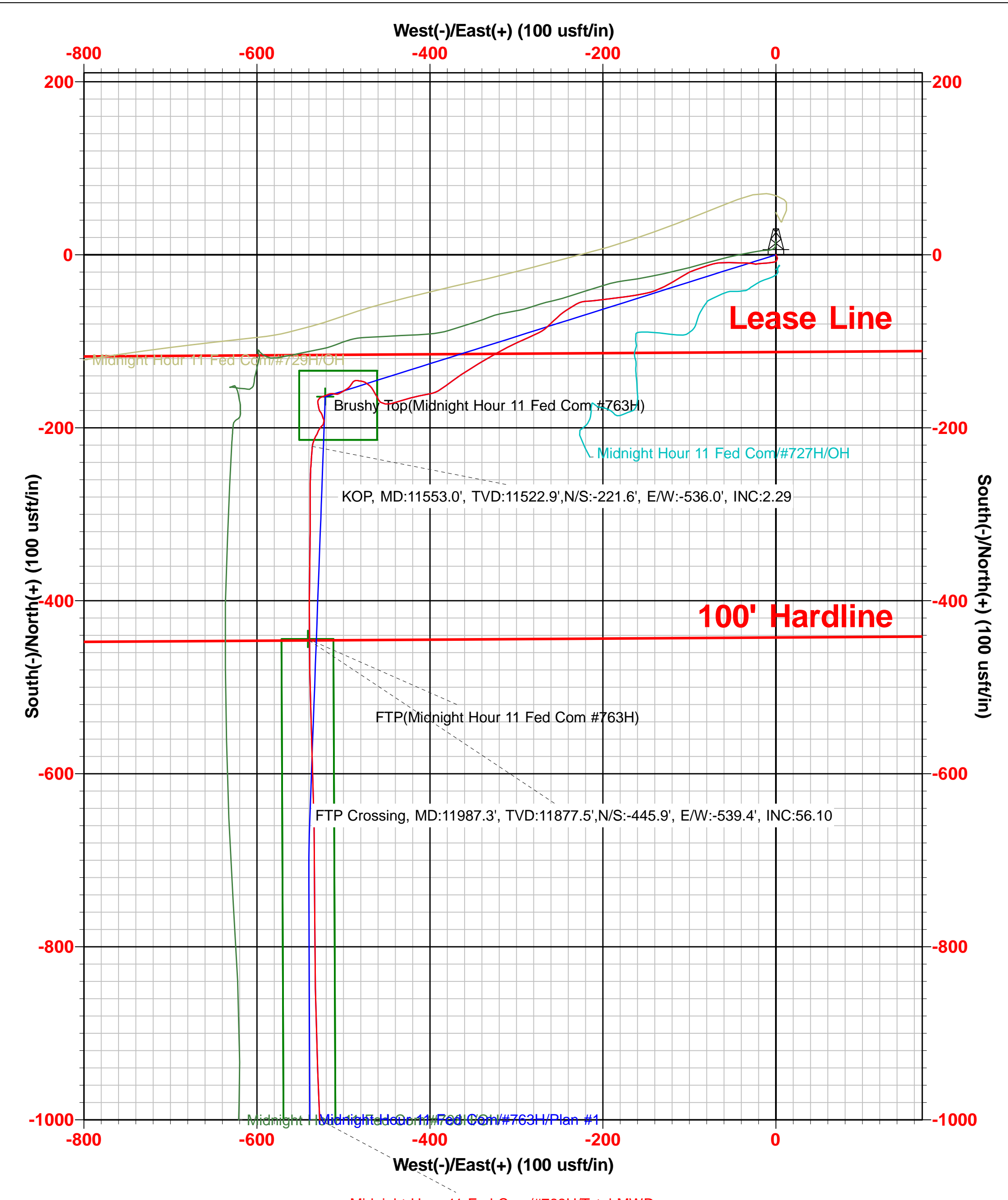
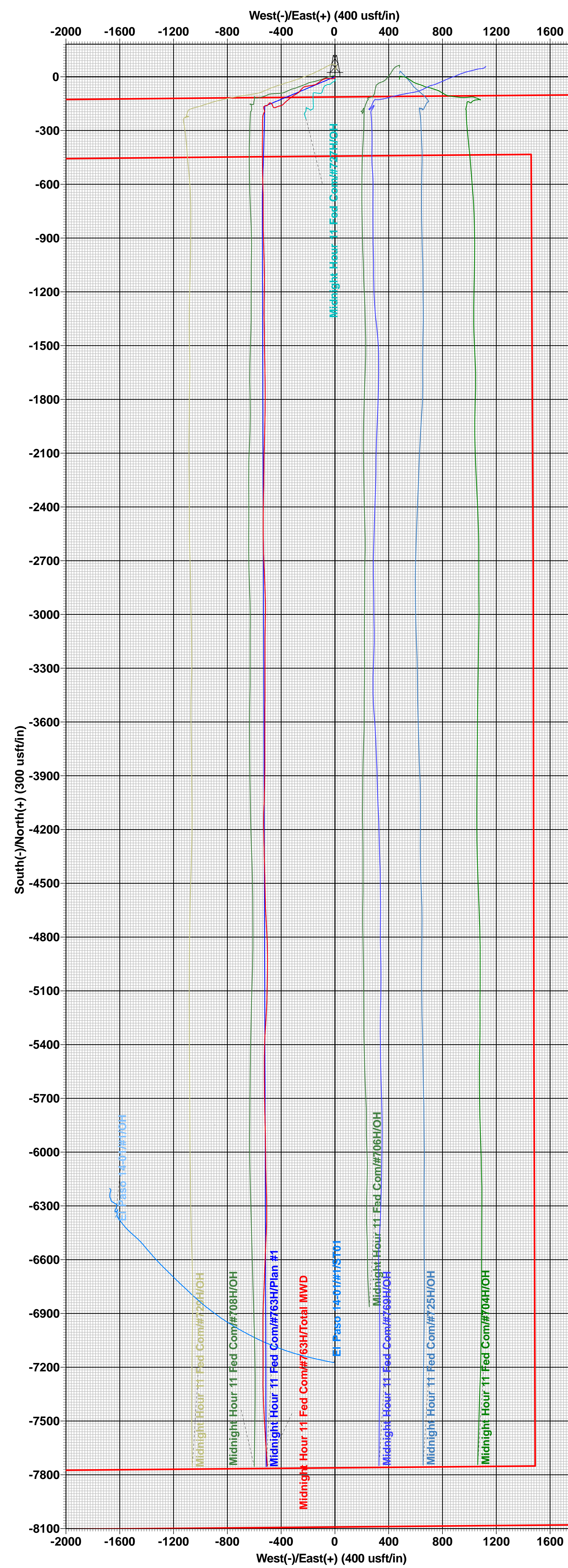
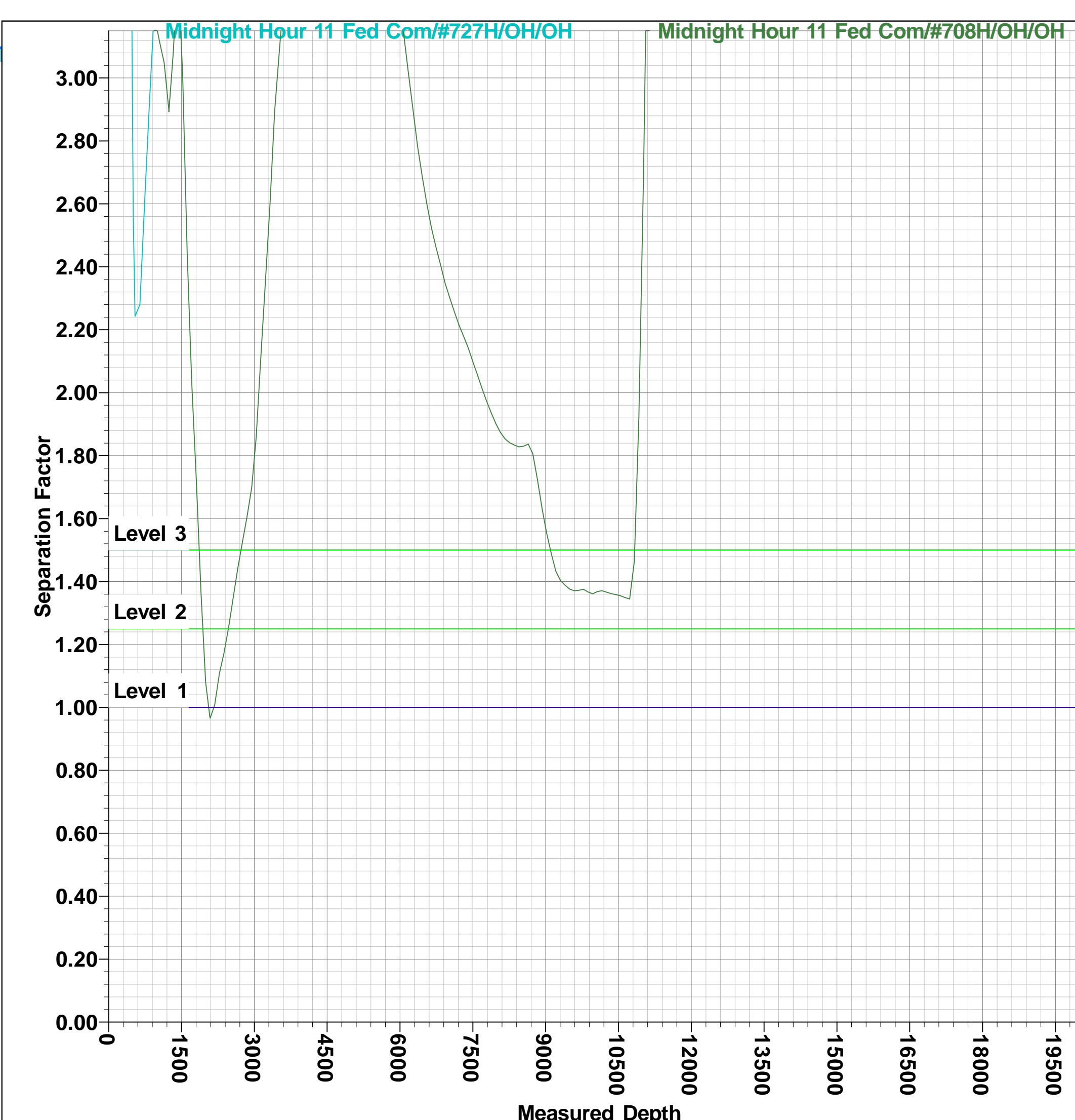
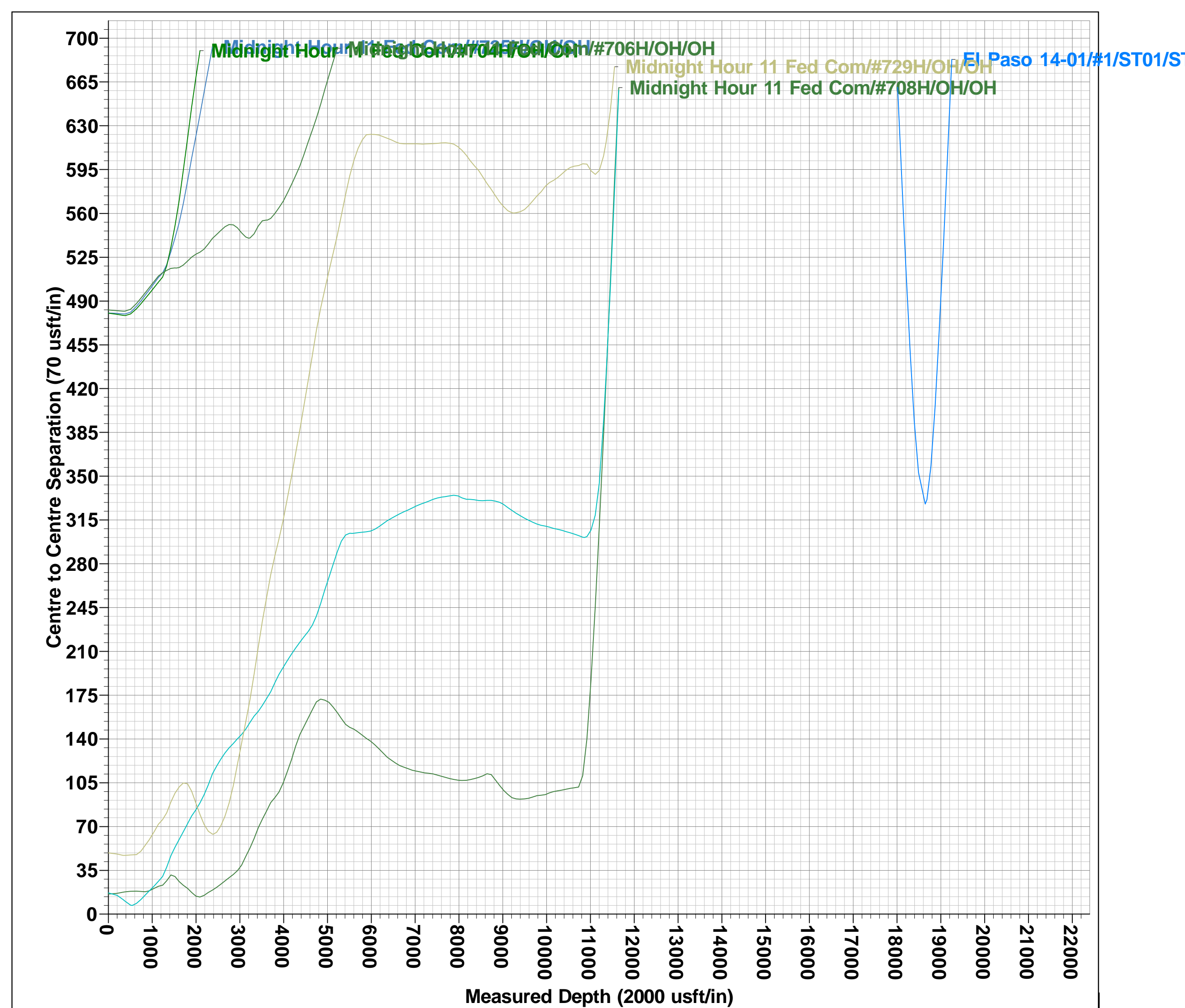
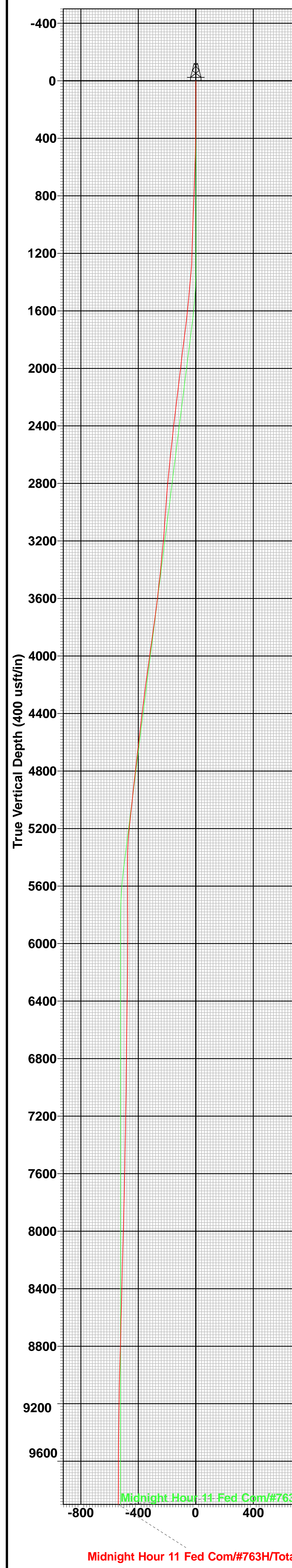
Geodetic System: US State Plane 1983  
 Datum: North American Datum 1983  
 Ellipsoid: GRS 1980  
 Zone: New Mexico Eastern Zone  
 System Datum: Mean Sea Level

## WELL DETAILS: #763H

3181.0  
 KB = 25' @ 3206.0usft  
 Northing 385025.00 Easting 691359.00 Latitude 32° 3' 27.319 N Longitude 103° 50' 56.666 W



To convert a Magnetic Direction to a Grid Direction, Add 6.25°  
 To convert a Magnetic Direction to a True Direction, Add 6.51° East  
 To convert a True Direction to a Grid Direction, Subtract 0.26°



Intent  As Drilled

API #									
Operator Name:					Property Name:				Well Number

Kick Off Point (KOP)

UL	Section	Township	Range	Lot	Feet	From N/S	Feet	From E/W	County
Latitude					Longitude				NAD

First Take Point (FTP)

UL	Section	Township	Range	Lot	Feet	From N/S	Feet	From E/W	County
Latitude					Longitude				NAD

Last Take Point (LTP)

UL	Section	Township	Range	Lot	Feet	From N/S	Feet	From E/W	County
Latitude					Longitude				NAD

Is this well the defining well for the Horizontal Spacing Unit?

Is this well an infill well?

If infill is yes please provide API if available, Operator Name and well number for Defining well for Horizontal Spacing Unit.

API #									
Operator Name:					Property Name:				Well Number

KZ 06/29/2018

Submit To Appropriate District Office Two Copies District I 1625 N. French Dr., Hobbs, NM 88240 District II 811 S. First St., Artesia, NM 88210 District III 1000 Rio Brazos Rd., Aztec, NM 87410 District IV 1220 S. St. Francis Dr., Santa Fe, NM 87505	<b>State of New Mexico</b> <b>Energy, Minerals and Natural Resources</b>  <b>Oil Conservation Division</b> <b>1220 South St. Francis Dr.</b> <b>Santa Fe, NM 87505</b>	<b>Form C-105</b> Revised August 1, 2011
		1. WELL API NO. <b>30-015-49545</b>
		2. Type of Lease <input type="checkbox"/> STATE <input type="checkbox"/> FEE <input checked="" type="checkbox"/> FED/INDIAN
		3. State Oil & Gas Lease No.

**WELL COMPLETION OR RECOMPLETION REPORT AND LOG**

4. Reason for filing: <input checked="" type="checkbox"/> <b>COMPLETION REPORT</b> (Fill in boxes #1 through #31 for State and Fee wells only)  <input type="checkbox"/> <b>C-144 CLOSURE ATTACHMENT</b> (Fill in boxes #1 through #9, #15 Date Rig Released and #32 and/or #33; attach this and the plat to the C-144 closure report in accordance with 19.15.17.13.K NMAC)	5. Lease Name or Unit Agreement Name <b>MIDNIGHT HOUR 11 FEDERAL COM</b>  6. Well Number: <b>763H</b>
---	---

7. Type of Completion:  
 NEW WELL  WORKOVER  DEEPENING  PLUGBACK  DIFFERENT RESERVOIR  OTHER

8. Name of Operator **EOG RESOURCES INC** 9. OGRID **7377**

10. Address of Operator **PO BOX 2267 MIDLAND, TEXAS 79702** 11. Pool name or Wildcat **PURPLE SAGE; WOLFCAMP (GAS)**

12. Location	Unit Ltr	Section	Township	Range	Lot	Feet from the	N/S Line	Feet from the	E/W Line	County
<b>Surface:</b>	<b>G</b>	<b>11</b>	<b>26S</b>	<b>30E</b>		<b>2555</b>	<b>NORTH</b>	<b>1786</b>	<b>EAST</b>	<b>EDDY</b>
<b>BH:</b>	<b>O</b>	<b>14</b>	<b>26S</b>	<b>30E</b>		<b>342</b>	<b>SOUTH</b>	<b>2321</b>	<b>EAST</b>	<b>EDDY</b>

13. Date Spudded **07/16/2022** 14. Date T.D. Reached **10/03/2022** 15. Date Rig Released **10/05/2022** 16. Date Completed (Ready to Produce) **12/01/2022** 17. Elevations (DF and RKB, RT, GR, etc.) **3193'**

18. Total Measured Depth of Well **MD 19,319'** TVD **11,936'** 19. Plug Back Measured Depth **MD 19,279'** TVD **11,936'** 20. Was Directional Survey Made? **YES** 21. Type Electric and Other Logs Run **GAMMA RAY/CBL**

22. Producing Interval(s), of this completion - Top, Bottom, Name  
**WOLFCAMP 12,074 - 19,279'**

**23. CASING RECORD (Report all strings set in well)**

CASING SIZE	WEIGHT LB./FT.	DEPTH SET	HOLE SIZE	CEMENTING RECORD	AMOUNT PULLED
9 5/8"	40.5# J-55	1100'	12 1/4"	450 SXS CL C/CIRC	
7 5/8"	29.7# P110 EC	11,341'	8 3/4"	1470 SXS CL C&H/89' ECHO	
5 1/2"	20# HCP 110	19,287'	6 3/4"	735 CL H/SURF CBL	

24. LINER RECORD				25. TUBING RECORD			
SIZE	TOP	BOTTOM	SACKS CEMENT	SCREEN	SIZE	DEPTH SET	PACKER SET

26. Perforation record (interval, size, and number)  
**12,074 - 19,279' 3 1/8", 1530 HOLES**

27. ACID, SHOT, FRACTURE, CEMENT, SQUEEZE, ETC.	
DEPTH INTERVAL	AMOUNT AND KIND MATERIAL USED
<b>12,074 - 19,279'</b>	<b>FRAC W/ 396,383 BBLs LOAD FLD, W/18,221,510 LBS PROPPANT</b>

**28. PRODUCTION**

Date First Production **12/01/2022** Production Method (*Flowing, gas lift, pumping - Size and type pump*) **FLOWING** Well Status (*Prod. or Shut-in*) **PRODUCING**

Date of Test	Hours Tested	Choke Size	Prod'n For Test Period	Oil - Bbl	Gas - MCF	Water - Bbl.	Gas - Oil Ratio
<b>12/14/2022</b>	<b>24 HRS</b>			<b>1266</b>	<b>15,203</b>	<b>10,687</b>	<b>12,007</b>

Flow Tubing Press.	Casing Pressure	Calculated 24-Hour Rate	Oil - Bbl.	Gas - MCF	Water - Bbl.	Oil Gravity - API - (Corr.)
	<b>2623</b>					<b>49</b>

29. Disposition of Gas (*Sold, used for fuel, vented, etc.*) 30. Test Witnessed By

31. List Attachments  
**C-102, C-104, DIRECTIONAL SURVEY, H SPACING (POINTS),**

32. If a temporary pit was used at the well, attach a plat with the location of the temporary pit.

33. If an on-site burial was used at the well, report the exact location of the on-site burial:  
 Latitude \_\_\_\_\_ Longitude \_\_\_\_\_ NAD 1927 1983

*I hereby certify that the information shown on both sides of this form is true and complete to the best of my knowledge and belief*

Printed

Signature **Kay Maddox** Name **Kay Maddox** Title **Senior Regulatory Specialist** Date **01/09/2023**  
 E-mail Address **kay\_maddox@eogresources.com**

# INSTRUCTIONS

This form is to be filed with the appropriate District Office of the Division not later than 20 days after the completion of any newly-drilled or deepened well and not later than 60 days after completion of closure. When submitted as a completion report, this shall be accompanied by one copy of all electrical and radio-activity logs run on the well and a summary of all special tests conducted, including drill stem tests. All depths reported shall be measured depths. In the case of directionally drilled wells, true vertical depths shall also be reported. For multiple completions, items 11, 12 and 26-31 shall be reported for each zone.

## INDICATE FORMATION TOPS IN CONFORMANCE WITH GEOGRAPHICAL SECTION OF STATE

Southeastern New Mexico		Northwestern New Mexico	
T. Anhy <u>RUSTLER 654'</u>	T. Canyon <u>BRUSHY 5846'</u>	T. Ojo Alamo	T. Penn A"
T. Salt <u>T/SALT 1066'</u>	T. Strawn	T. Kirtland	T. Penn. "B"
B. Salt <u>B/SALT 1815'</u>	T. Atoka	T. Fruitland	T. Penn. "C"
T. Yates	T. Miss	T. Pictured Cliffs	T. Penn. "D"
T. 7 Rivers	T. Devonian	T. Cliff House	T. Leadville
T. Queen	T. Silurian	T. Menefee	T. Madison
T. Grayburg	T. Montoya	T. Point Lookout	T. Elbert
T. San Andres	T. Simpson	T. Mancos	T. McCracken
T. Glorieta	T. McKee	T. Gallup	T. Ignacio Otzte
T. Paddock	T. Ellenburger	Base Greenhorn	T. Granite
T. Blinebry	T. Gr. Wash	T. Dakota	
T. Tubb	T. Delaware Sand	T. Morrison	
T. Drinkard	T. Bone Springs	T. Todilto	
T. Abo	T. <u>1ST BONE SPRING SAND 8610'</u>	T. Entrada	
T. Wolfcamp <u>10,928'</u>	T. <u>2ND BONE SPRING SAND 9270'</u>	T. Wingate	
T. Penn	T. <u>3RD BONE SPRING SAND 10,540'</u>	T. Chinle	
T. Cisco (Bough C)	T.	T. Permian	

### OIL OR GAS SANDS OR ZONES

No. 1, from.....to.....  
 No. 2, from.....to.....

No. 3, from.....to.....  
 No. 4, from.....to.....

### IMPORTANT WATER SANDS

Include data on rate of water inflow and elevation to which water rose in hole.

No. 1, from.....to.....feet.....  
 No. 2, from.....to.....feet.....  
 No. 3, from.....to.....feet.....

## LITHOLOGY RECORD (Attach additional sheet if necessary)

From	To	Thickness In Feet	Lithology	From	To	Thickness In Feet	Lithology

Sante Fe Main Office  
Phone: (505) 476-3441

General Information  
Phone: (505) 629-6116

Online Phone Directory  
<https://www.emnrd.nm.gov/ocd/contact-us>

**State of New Mexico**  
**Energy, Minerals and Natural Resources**  
**Oil Conservation Division**  
**1220 S. St Francis Dr.**  
**Santa Fe, NM 87505**

ACKNOWLEDGMENTS

Action 174308

**ACKNOWLEDGMENTS**

Operator: EOG RESOURCES INC 5509 Champions Drive Midland, TX 79706	OGRID: 7377
	Action Number: 174308
	Action Type: [C-104] Completion Packet (C-104C)

**ACKNOWLEDGMENTS**

<input checked="" type="checkbox"/>	I hereby certify that the required Water Use Report has been, or will be, submitted for this wells completion.
<input checked="" type="checkbox"/>	I hereby certify that the required FracFocus disclosure has been, or will be, submitted for this wells completion.

Sante Fe Main Office  
Phone: (505) 476-3441

General Information  
Phone: (505) 629-6116

Online Phone Directory  
<https://www.emnrd.nm.gov/ocd/contact-us>

**State of New Mexico**  
**Energy, Minerals and Natural Resources**  
**Oil Conservation Division**  
**1220 S. St Francis Dr.**  
**Santa Fe, NM 87505**

CONDITIONS

Action 174308

**CONDITIONS**

Operator: EOG RESOURCES INC 5509 Champions Drive Midland, TX 79706	OGRID: 7377
	Action Number: 174308
	Action Type: [C-104] Completion Packet (C-104C)

**CONDITIONS**

Created By	Condition	Condition Date
plmartinez	File 3160-4 Completion Report within 10 days of BLM approval.	4/15/2026