

Well Name: BRUSHY DRAW 31 FEDERAL	Well Location: T25S / R30E / SEC 30 / LOT 4 / SWSW / 32.094511 / - 103.925404	County or Parish/State: EDDY / NM
Well Number: 122H	Type of Well: OIL WELL	Allottee or Tribe Name:
Lease Number: NMNM102033, NMNM14785	Unit or CA Name:	Unit or CA Number:
US Well Number: 3001545190	Operator: XTO PERMIAN OPERATING LLC	

Notice of Intent

Sundry ID: 2900595

Type of Submission: Notice of Intent

Type of Action: APD Change

Date Sundry Submitted: 03/16/2026

Time Sundry Submitted: 08:34

Date proposed operation will begin: 03/16/2026

Procedure Description: ***WELL RECORD CLEAN UP*** XTO Permian Operating LLC. discovered under well file review that the dedicated acreage needs to be updated. XTO Permian Operating LLC. respectfully requests your approval for changing the dedicated acreage. The dedicated acreage is changing fr/ 720 to/ 800. Please see the attached amended C-102 as drilled for your approval.

NOI Attachments

Procedure Description

Brushy_Draw_30_Fed_122H_C102_As_Drilled_3.11.26_20260316083338.pdf

Well Name: BRUSHY DRAW 31
FEDERAL

Well Location: T25S / R30E / SEC 30 /
LOT 4 / SWSW / 32.094511 / -
103.925404

County or Parish/State: EDDY /
NM

Well Number: 122H

Type of Well: OIL WELL

Allottee or Tribe Name:

Lease Number: NMNM102033,
NMNM14785

Unit or CA Name:

Unit or CA Number:

US Well Number: 3001545190

Operator: XTO PERMIAN OPERATING
LLC

Operator

I certify that the foregoing is true and correct. Title 18 U.S.C. Section 1001 and Title 43 U.S.C. Section 1212, make it a crime for any person knowingly and willfully to make to any department or agency of the United States any false, fictitious or fraudulent statements or representations as to any matter within its jurisdiction. Electronic submission of Sundry Notices through this system satisfies regulations requiring a

Operator Electronic Signature: AMANDA CLERC

Signed on: MAR 16, 2026 08:33 AM

Name: XTO PERMIAN OPERATING LLC

Title: Regulatory Analyst

Street Address: 6401 HOLIDAY HILL ROAD BLDG 5

City: MIDLAND

State: TX

Phone: (432) 221-7340

Email address: AMANDA.CLERC@EXXONMOBIL.COM

Field

Representative Name:

Street Address:

City:

State:

Zip:

Phone:

Email address:

BLM Point of Contact

BLM POC Name: MARIAH HUGHES

BLM POC Title: Land Law Examiner

BLM POC Phone: 5752345972

BLM POC Email Address: MHUGHES@BLM.GOV

Disposition: Approved

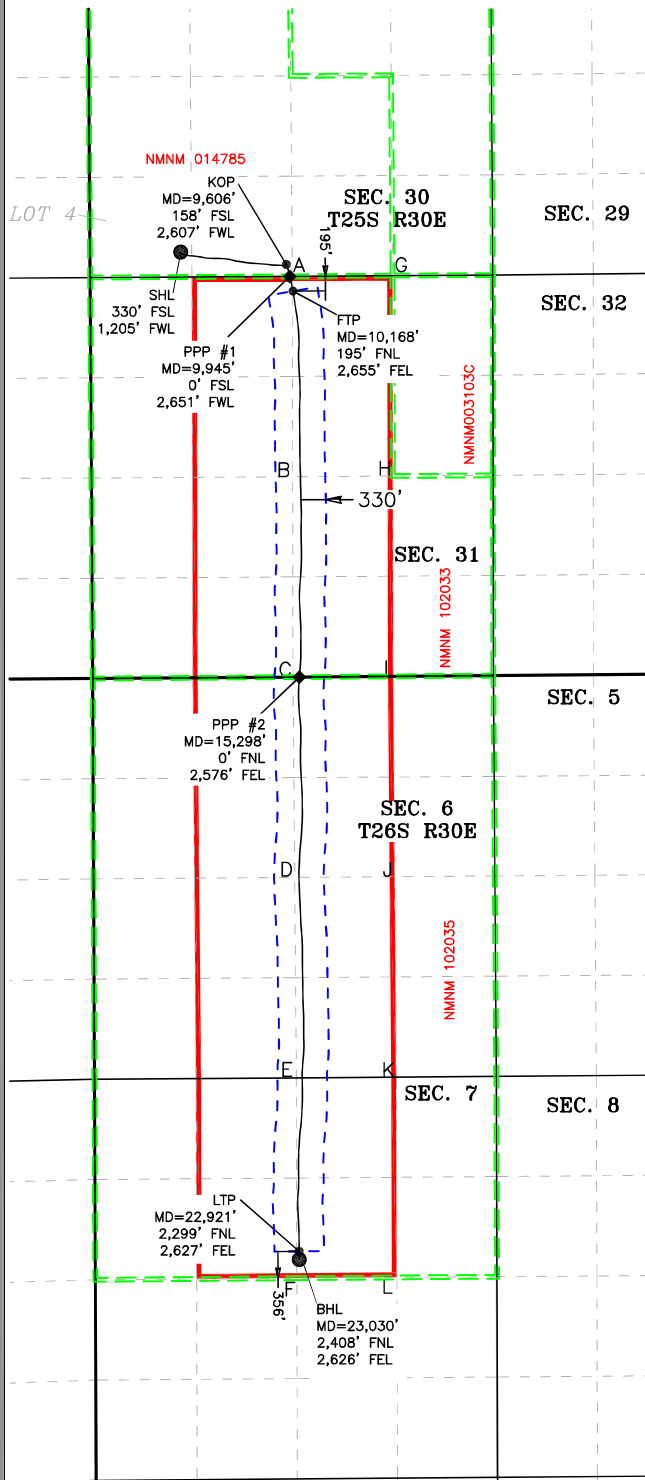
Disposition Date: 03/16/2026

Signature: CODY LAYTON ASSISTANT FIELD
MANAGER

ACREAGE DEDICATION PLATS

This grid represents a standard section. You may superimpose a non-standard section, or a larger area, over this grid. Operators must outline the dedicated acreage in a red box, clearly show the well surface location and bottom hole location, if it is directionally drilled, with the dimensions from the section lines in the cardinal directions. If this is a horizontal wellbore show on this plat the location of the First Take Point and Last Take Point, and the point within the Completed interval (other than the First Take Point or Last Take Point) that is the closest to any outer boundary of the tract.

Surveyors shall use the latest United States government survey or dependent resurvey. Well locations will be in reference to the New Mexico Principal Meridian. If the land is not surveyed, contact the OCD Engineering Bureau. Independent subdivision surveys will not be acceptable.



LOT ACREAGE TABLE
LOT 4 - 40.56 ACRES

COORDINATE TABLE			
SHL (NAD 83 NME)		LTP (NAD 83 NME)	
Y =	398,358.9 N	Y =	385,112.5 N
X =	667,661.2 E	X =	669,235.1 E
LAT. =	32.094511 °N	LAT. =	32.058082 °N
LONG. =	103.925404 °W	LONG. =	103.920486 °W
KOP (NAD 83 NME)		BHL (NAD 83 NME)	
Y =	398,195.7 N	Y =	385,003.6 N
X =	669,063.8 E	X =	669,236.1 E
LAT. =	32.094048 °N	LAT. =	32.057782 °N
LONG. =	103.920877 °W	LONG. =	103.920484 °W
FTP (NAD 83 NME)			
Y =	397,842.4 N		
X =	669,152.5 E		
LAT. =	32.093076 °N		
LONG. =	103.920595 °W		
SHL (NAD 27 NME)		LTP (NAD 27 NME)	
Y =	398,300.7 N	Y =	385,054.7 N
X =	626,476.3 E	X =	628,049.8 E
LAT. =	32.094386 °N	LAT. =	32.057956 °N
LONG. =	103.924921 °W	LONG. =	103.920004 °W
KOP (NAD 27 NME)		BHL (NAD 27 NME)	
Y =	398,137.5 N	Y =	384,945.8 N
X =	627,878.9 E	X =	628,050.8 E
LAT. =	32.093923 °N	LAT. =	32.057657 °N
LONG. =	103.920394 °W	LONG. =	103.920002 °W
FTP (NAD 27 NME)			
Y =	397,784.2 N		
X =	627,967.5 E		
LAT. =	32.092951 °N		
LONG. =	103.920112 °W		
PPP #1 (NAD 83 NME)		PPP #1 (NAD 27 NME)	
Y =	398,037.6 N	Y =	397,979.4 N
X =	669,109.6 E	X =	627,924.7 E
LAT. =	32.093613 °N	LAT. =	32.093488 °N
LONG. =	103.920731 °W	LONG. =	103.920248 °W
PPP #2 (NAD 83 NME)		PPP #2 (NAD 27 NME)	
Y =	392,725.2 N	Y =	392,667.1 N
X =	669,237.8 E	X =	628,052.7 E
LAT. =	32.079008 °N	LAT. =	32.078883 °N
LONG. =	103.920383 °W	LONG. =	103.919900 °W

CORNER COORDINATES (NAD83 NME)			
A - Y =	398,037.8 N	A - X =	669,143.7 E
B - Y =	395,382.0 N	B - X =	669,148.4 E
C - Y =	392,724.6 N	C - X =	669,153.0 E
D - Y =	390,069.4 N	D - X =	669,175.5 E
E - Y =	387,411.8 N	E - X =	669,198.0 E
F - Y =	384,756.2 N	F - X =	669,204.1 E
G - Y =	398,047.7 N	G - X =	670,474.6 E
H - Y =	395,390.9 N	H - X =	670,479.4 E
I - Y =	392,734.7 N	I - X =	670,483.5 E
J - Y =	390,079.0 N	J - X =	670,505.2 E
K - Y =	387,422.3 N	K - X =	670,525.6 E
L - Y =	384,766.4 N	L - X =	670,533.7 E

CORNER COORDINATES (NAD27 NME)			
A - Y =	397,979.6 N	A - X =	627,958.8 E
B - Y =	395,323.9 N	B - X =	627,963.3 E
C - Y =	392,666.5 N	C - X =	627,967.9 E
D - Y =	390,011.4 N	D - X =	627,990.3 E
E - Y =	387,353.9 N	E - X =	628,012.7 E
F - Y =	384,698.4 N	F - X =	628,018.8 E
G - Y =	397,989.5 N	G - X =	629,289.6 E
H - Y =	395,332.7 N	H - X =	629,294.4 E
I - Y =	392,676.7 N	I - X =	629,298.4 E
J - Y =	390,021.1 N	J - X =	629,320.0 E
K - Y =	387,364.4 N	K - X =	629,340.3 E
L - Y =	384,708.6 N	L - X =	629,348.4 E

LEGEND
 --- SECTION LINE
 --- PROPOSED WELLBORE
 --- NEW MEXICO MINERAL LEASE LINE
 --- 330' BUFFER
 --- DEDICATED ACREAGE



2205 Walnut Street - Columbus, TX 78934
 Ph: 979.732.3114 - Fax: 979.732.5271
 TBPE Firm 17957 | TBPLS Firm 10000100
 www.fscinc.net
 © COPYRIGHT 2025 - ALL RIGHTS RESERVED

DATE: 03-04-2026 PROJECT NO: 2017060882
 DRAWN BY: WL SCALE: 1" = 2,000'
 CHECKED BY: LM SHEET: 2 OF 2
 FIELD CREW: IR REVISION: NO

Sante Fe Main Office
Phone: (505) 476-3441

General Information
Phone: (505) 629-6116

Online Phone Directory
<https://www.emnrd.nm.gov/ocd/contact-us>

State of New Mexico
Energy, Minerals and Natural Resources
Oil Conservation Division
1220 S. St Francis Dr.
Santa Fe, NM 87505

CONDITIONS

Action 563094

CONDITIONS

Operator: XTO PERMIAN OPERATING LLC. 3617 Big Spring St. MIDLAND, TX 79705	OGRID: 373075
	Action Number: 563094
	Action Type: [C-103A] NOI Change of Plans (C-103A)

CONDITIONS

Created By	Condition	Condition Date
ward.rikala	None	4/21/2026