

\*\*\* Name Change Sundry \*\*\*

XTO Energy Inc., respectfully requests approval to change the name of this well from "Remuda North 25 ST Com 502H" to "Remuda North 25 State Com 502H". The API ID for this well is 30-015-55685



ACREAGE DEDICATION PLATS

This grid represents a standard section. You may superimpose a non-standard section, or a larger area, over this grid. Operators must outline the dedicated acreage in a red box, clearly show the well surface location and bottom hole location, if it is directionally drilled, with the dimensions from the section lines in the cardinal directions. If this is a horizontal wellbore show on this plat the location of the First Take Point and Last Take Point, and the point within the Completed interval (other than the First Take Point or Last Take Point) that is the closest to any outer boundary of the tract.

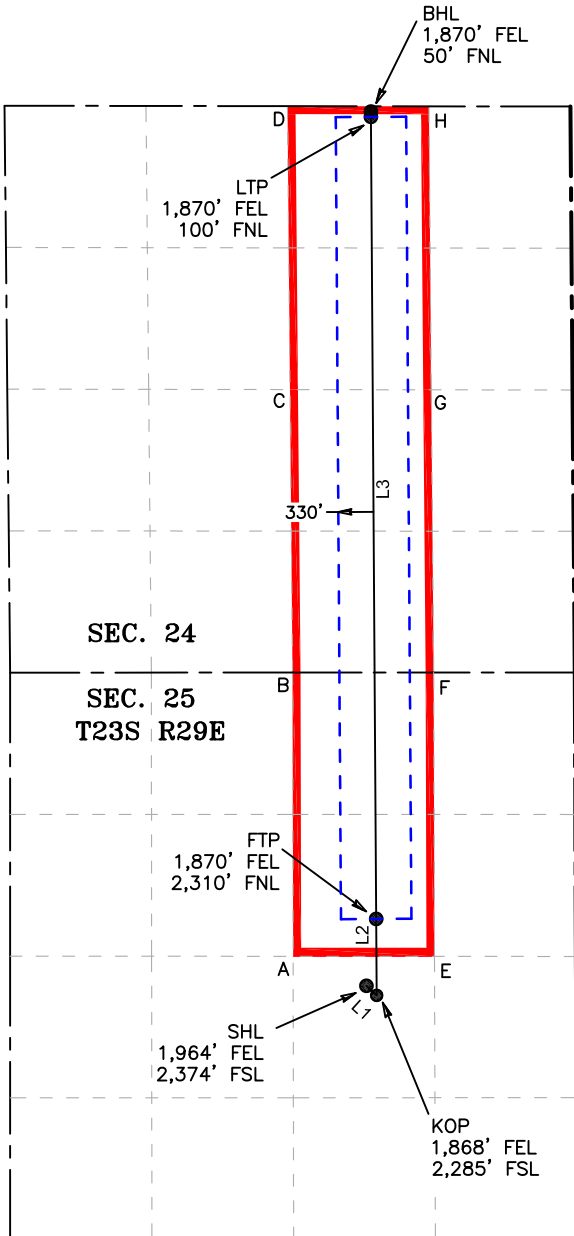
Surveyors shall use the latest United States government survey or dependent resurvey. Well locations will be in reference to the New Mexico Principal Meridian. If the land is not surveyed, contact the OCD Engineering Bureau. Independent subdivision surveys will not be acceptable.

LEGEND

- SECTION LINE
- PROPOSED WELLBORE
- 330' BUFFER
- DEDICATED ACREAGE

LINE TABLE		
LINE	AZIMUTH	LENGTH
L1	132° 46'45"	131.01'
L2	359° 37'46"	716.18'
L3	359° 37'29"	7,569.10'

COORDINATE TABLE					
SHL (NAD 83 NME)			LTP (NAD 83 NME)		
Y =	464,042.0	N	Y =	472,188.1	N
X =	664,156.4	E	X =	664,198.7	E
LAT. =	32.275101	°N	LAT. =	32.297492	°N
LONG. =	103.935938	°W	LONG. =	103.935704	°W
KOP (NAD 83 NME)			BHL (NAD 83 NME)		
Y =	463,953.0	N	Y =	472,238.1	N
X =	664,252.6	E	X =	664,198.4	E
LAT. =	32.274855	°N	LAT. =	32.297630	°N
LONG. =	103.935628	°W	LONG. =	103.935704	°W
FTP (NAD 83 NME)					
Y =	464,669.2	N			
X =	664,247.9	E			
LAT. =	32.276824	°N			
LONG. =	103.935635	°W			
SHL (NAD 27 NME)			LTP (NAD 27 NME)		
Y =	463,982.1	N	Y =	472,128.0	N
X =	622,973.6	E	X =	623,016.2	E
LAT. =	32.274977	°N	LAT. =	32.297369	°N
LONG. =	103.935447	°W	LONG. =	103.935211	°W
KOP (NAD 27 NME)			BHL (NAD 27 NME)		
Y =	463,893.1	N	Y =	472,178.0	N
X =	623,069.8	E	X =	623,015.9	E
LAT. =	32.274731	°N	LAT. =	32.297506	°N
LONG. =	103.935137	°W	LONG. =	103.935212	°W
FTP (NAD 27 NME)					
Y =	464,609.3	N			
X =	623,065.1	E			
LAT. =	32.276700	°N			
LONG. =	103.935143	°W			



CORNER COORDINATES (NAD83 NME)					
A - Y =	464,319.1	N	A - X =	663,469.2	E
B - Y =	466,979.3	N	B - X =	663,464.2	E
C - Y =	469,631.9	N	C - X =	663,440.1	E
D - Y =	472,289.1	N	D - X =	663,415.9	E
E - Y =	464,318.4	N	E - X =	664,794.2	E
F - Y =	466,979.1	N	F - X =	664,786.8	E
G - Y =	469,629.7	N	G - X =	664,763.7	E
H - Y =	472,287.4	N	H - X =	664,742.0	E
CORNER COORDINATES (NAD27 NME)					
A - Y =	464,259.2	N	A - X =	622,286.4	E
B - Y =	466,919.3	N	B - X =	622,281.5	E
C - Y =	469,571.9	N	C - X =	622,257.5	E
D - Y =	472,229.0	N	D - X =	622,233.4	E
E - Y =	464,258.5	N	E - X =	623,611.4	E
F - Y =	466,919.1	N	F - X =	623,604.1	E
G - Y =	469,569.7	N	G - X =	623,581.1	E
H - Y =	472,227.3	N	H - X =	623,559.5	E



2821 West 7th Street, Suite 200  
 Fort Worth, TX 76107  
 Ph: 817.349.9800 - Fax: 979.732.5271  
 TBPE Firm 17957 | TBPLS Firm 10193887  
 www.fscinc.net  
 © COPYRIGHT 2024 - ALL RIGHTS RESERVED

DATE: 10-22-2024 PROJECT NO: 2024090428  
 DRAWN BY: LM SCALE: 1" = 2,500'  
 CHECKED BY: CH SHEET: 2 OF 2  
 FIELD CREW: IR REVISION: 2

Sante Fe Main Office  
Phone: (505) 476-3441

General Information  
Phone: (505) 629-6116

Online Phone Directory  
<https://www.emnrd.nm.gov/ocd/contact-us>

**State of New Mexico**  
**Energy, Minerals and Natural Resources**  
**Oil Conservation Division**  
**1220 S. St Francis Dr.**  
**Santa Fe, NM 87505**

CONDITIONS

Action 570160

**CONDITIONS**

Operator: XTO ENERGY, INC 3617 North Big Spring Street Midland, TX 79705	OGRID: 5380
	Action Number: 570160
	Action Type: [C-103A] NOI Change of Plans (C-103A)

**CONDITIONS**

Created By	Condition	Condition Date
ward.rikala	None	4/21/2026