

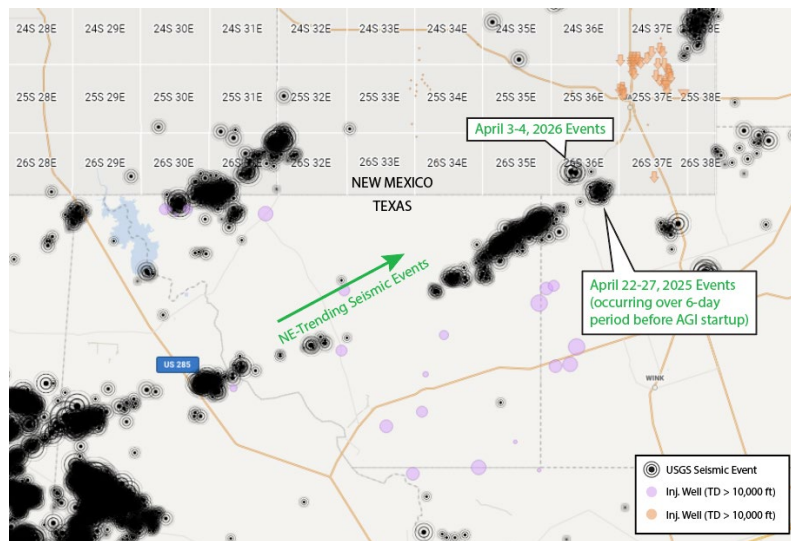
From: David White
To: Goetze, Phillip, FMNRO; Harris, Anthony, FMNRO
Cc: Barton, David
Subject: [EXTERNAL] RE: Southeast NM Seismicity
Date: Thursday, April 16, 2026 2:10:57 PM
Attachments: image001.png
 image002.png

CAUTION: This email originated outside of our organization. Exercise caution prior to clicking on links or opening attachments.

Good day Phil and Anthony,

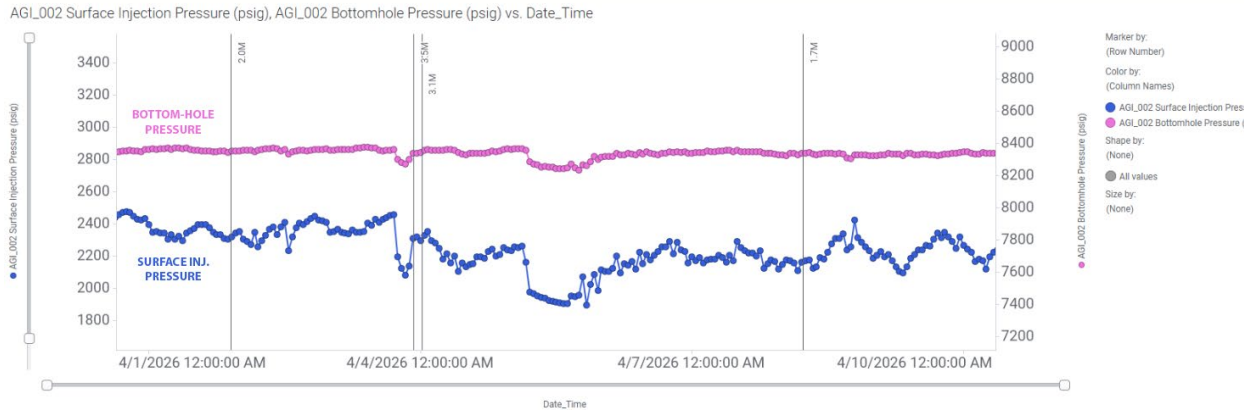
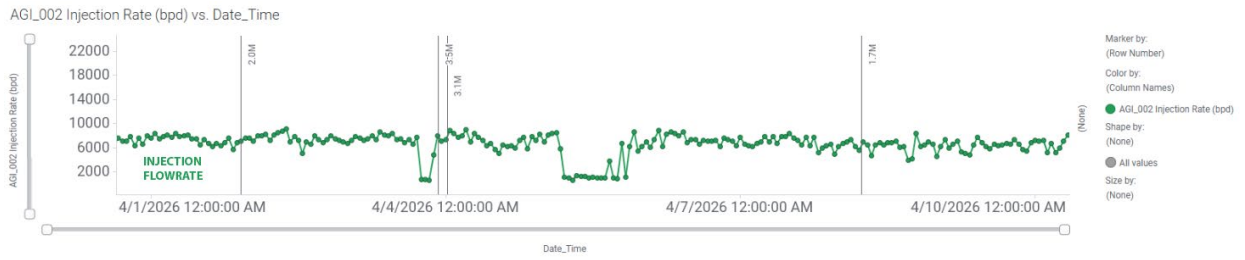
I hope all is going well for you this week. I'm reaching out on behalf of MPLX (operating as Northwind Midstream) regarding the recent seismic events documented in southeast New Mexico. Specifically, this is in reference to two events observed on April 3 and 4, 2026. As documented in United States Geological Survey (USGS) and New Mexico Seismological Network records, the depths of these seismic events were reported to occur between approximately 6 to 10 km, and the associated magnitudes were determined to range from 3.1 to 3.69M.

MPLX has been continuing to monitor regional seismicity and AGI well operating conditions, as part of their normal operations, to further understand the nature of local seismic events. As you may be aware, there has been an increasing frequency of seismic events to the south (in Texas) that has been occurring on a NE trend over the previous several years. These events occur despite a lack of deep injection activities occurring in proximity to these features. While there are injection wells (shown as purple points in below image), they are generally shallow along this seismic event trend. Additionally, and along this seismic event trend near the Titan Treating Facility, a discrete series of seismic events was recorded over a six-day period (from April 22-27, 2025, see below), prior to the commencement of any deep injection via the Salt Creek AGI #2.



With respect to AGI well activities, the observed April 2026 seismic events have had no impact on the current Salt Creek AGI #2 operating conditions. Since AGI well commissioning, there has been no observed or documented increase in down-hole operating pressures that would indicate reservoir pressure has accumulated such that fault motion could be initiated. In fact, since startup of the Salt Creek AGI #2 well (in Q3 2025) down-hole operating pressures have remained within a relatively stable range of approximately 8,300-8,400 psig, generally in accordance with the corresponding injection flow rates.

As shown in the image below, there have been no changes to the down-hole operating pressure conditions in response to these seismic events. Where there are deviations in bottom-hole pressure (purple), these are clearly correlative with instances of shutdown or reduced flow to Salt Creek AGI #2.



While initial review and historic data support that these events may not be related to injection activities, MPLX recognizes their occurrence and intends to continue closely monitoring AGI well operating conditions and seismic event records to (1) ensure continued compliance with the Salt Creek AGI #2 injection permit and (2) to further understand and monitor any association of seismic events with local injection activities.

As we all continue to monitor subsurface conditions and events closely, we are happy to discuss our observations and findings any time. Please feel free to reach out anytime to discuss or forward this correspondence to any additional members of your team, as needed.

Regards,

David A. White, P.G.
 Geolex, Incorporated
 500 Marquette Avenue NW, Suite 1350
 Albuquerque, NM 87102
 (505) 842-8000 Office
 (859) 967-7231 Cell

PRIVILEGED & CONFIDENTIAL

This message and attachment(s) contain confidential information belonging to the sender which is intended for the sole use of the individual(s) or entity named above. If you receive this message in error, you are hereby notified that any disclosure, copying, distribution, resending, forwarding or taking of any action in reliance on the contents of this email and/or any attachment(s) is strictly prohibited. If you have received this message in error, please notify the sender via return email and permanently delete this message and any attachment(s) from any computer(s).

Sante Fe Main Office
Phone: (505) 476-3441

General Information
Phone: (505) 629-6116

Online Phone Directory
<https://www.emnrd.nm.gov/ocd/contact-us>

State of New Mexico
Energy, Minerals and Natural Resources
Oil Conservation Division
1220 S. St Francis Dr.
Santa Fe, NM 87505

CONDITIONS

Action 578892

CONDITIONS

Operator: NEW MEXICO ENERGY MINERALS & NATURAL RESOURCE 1220 S St Francis Dr Santa Fe , NM 87504	OGRID: 264235
	Action Number: 578892
	Action Type: [IM-SD] Well File Support Doc (ENG) (IM-AWF)

CONDITIONS

Created By	Condition	Condition Date
pgoetze	None	4/24/2026