

District I  
1625 N. French Dr., Hobbs, NM 88240  
District II  
811 S. First St., Artesia, NM 88210  
District III  
1000 Rio Brazos Rd., Aztec, NM 87410  
District IV  
1220 S. St. Francis Dr., Santa Fe, NM 87505

State of New Mexico  
Energy, Minerals & Natural Resources

Form C-104  
Revised August 1, 2011

Oil Conservation Division  
1220 South St. Francis Dr.  
Santa Fe, NM 87505

Submit one copy to appropriate District Office

AMENDED REPORT

**I. REQUEST FOR ALLOWABLE AND AUTHORIZATION TO TRANSPORT**

<sup>1</sup> Operator name and Address Mewbourne Oil Company PO Box 5270 Hobbs, NM 88241		<sup>2</sup> OGRID Number 14744
		<sup>3</sup> Reason for Filing Code/ Effective Date NW / 10/14/2022
<sup>4</sup> API Number 30-015-49319	<sup>5</sup> Pool Name Purple Sage; Wolfcamp (Gas)	<sup>6</sup> Pool Code 98220
<sup>7</sup> Property Code 332475	<sup>8</sup> Property Name Fuller 14/11 W1GB Fed Com	<sup>9</sup> Well Number 1H

**II. <sup>10</sup> Surface Location**

UL or lot no.	Section	Township	Range	Lot Idn	Feet from the	North/South Line	Feet from the	East/West line	County
J	14	26S	29E		2590	South	1378	East	Eddy

**<sup>11</sup> Bottom Hole Location**

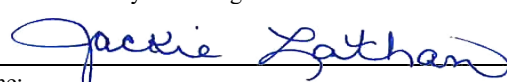
UL or lot no.	Section	Township	Range	Lot Idn	Feet from the	North/South line	Feet from the	East/West line	County
B	11	26S	29E		316	North	1665	East	Eddy
<sup>12</sup> Lse Code F	<sup>13</sup> Producing Method Code Flowing	<sup>14</sup> Gas Connection Date 10/14/2022	<sup>15</sup> C-129 Permit Number	<sup>16</sup> C-129 Effective Date	<sup>17</sup> C-129 Expiration Date				

**III. Oil and Gas Transporters**

<sup>18</sup> Transporter OGRID	<sup>19</sup> Transporter Name and Address	<sup>20</sup> O/G/W
195739	Plains Pipeline 5500 Ming Ave Suite 300 Bakersfield, CA 93309	O
248440	Western 1250 West Washington Suite 101 Tempe, AZ 85281	G

**IV. Well Completion Data**

<sup>21</sup> Spud Date 05/18/2022	<sup>22</sup> Ready Date 10/14/2022	<sup>23</sup> TD 17906' MD	<sup>24</sup> PBDT 17885'	<sup>25</sup> Perforations 10606' - 17852	<sup>26</sup> DHC, MC NA		
<sup>27</sup> Hole Size		<sup>28</sup> Casing & Tubing Size		<sup>29</sup> Depth Set		<sup>30</sup> Sacks Cement	
17 1/2"		13 3/8" 54.5# J55		1120'		825	
12 1/4"		9 5/8" 40# ICL80		4165'		1125	
8 3/4"		7" 29# HCIP110		9778'		875	
6 1/8"		4 1/2" 13.5# HCP110		9583'-17903'		600	
<sup>31</sup> Date New Oil 10/14/2022	<sup>32</sup> Gas Delivery Date 10/14/2022	<sup>33</sup> Test Date 10/15/2022		<sup>34</sup> Test Length 24 hrs	<sup>35</sup> Tbg. Pressure	<sup>36</sup> Csg. Pressure 1780	
<sup>37</sup> Choke Size 24/64"	<sup>38</sup> Oil 96	<sup>39</sup> Water 1612		<sup>40</sup> Gas 370	<sup>41</sup> Test Method Production		

<sup>42</sup> I hereby certify that the rules of the Oil Conservation Division have been complied with and that the information given above is true and complete to the best of my knowledge and belief. Signature: 	OIL CONSERVATION DIVISION Approved by:
Printed name: Jackie Lathan	Title:
Title: Regulatory	Approval Date:
E-mail Address: jlathan@mewbourne.com	
Date: 11/21/2022	Phone: 575-393-5905

District I  
1625 N. French Dr., Hobbs, NM 88240  
Phone: (575) 393-6161 Fax: (575) 393-0720  
District II  
811 S. First St., Artesia, NM 88210  
Phone: (575) 748-1283 Fax: (575) 748-9720  
District III  
1000 Rio Brazos Road, Aztec, NM 87410  
Phone: (505) 334-6178 Fax: (505) 334-6170  
District IV  
1220 S. St. Francis Dr., Santa Fe, NM 87505  
Phone: (505) 476-3460 Fax: (505) 476-3462

State of New Mexico  
Energy, Minerals & Natural Resources Department  
OIL CONSERVATION DIVISION  
1220 South St. Francis Dr.  
Santa Fe, NM 87505

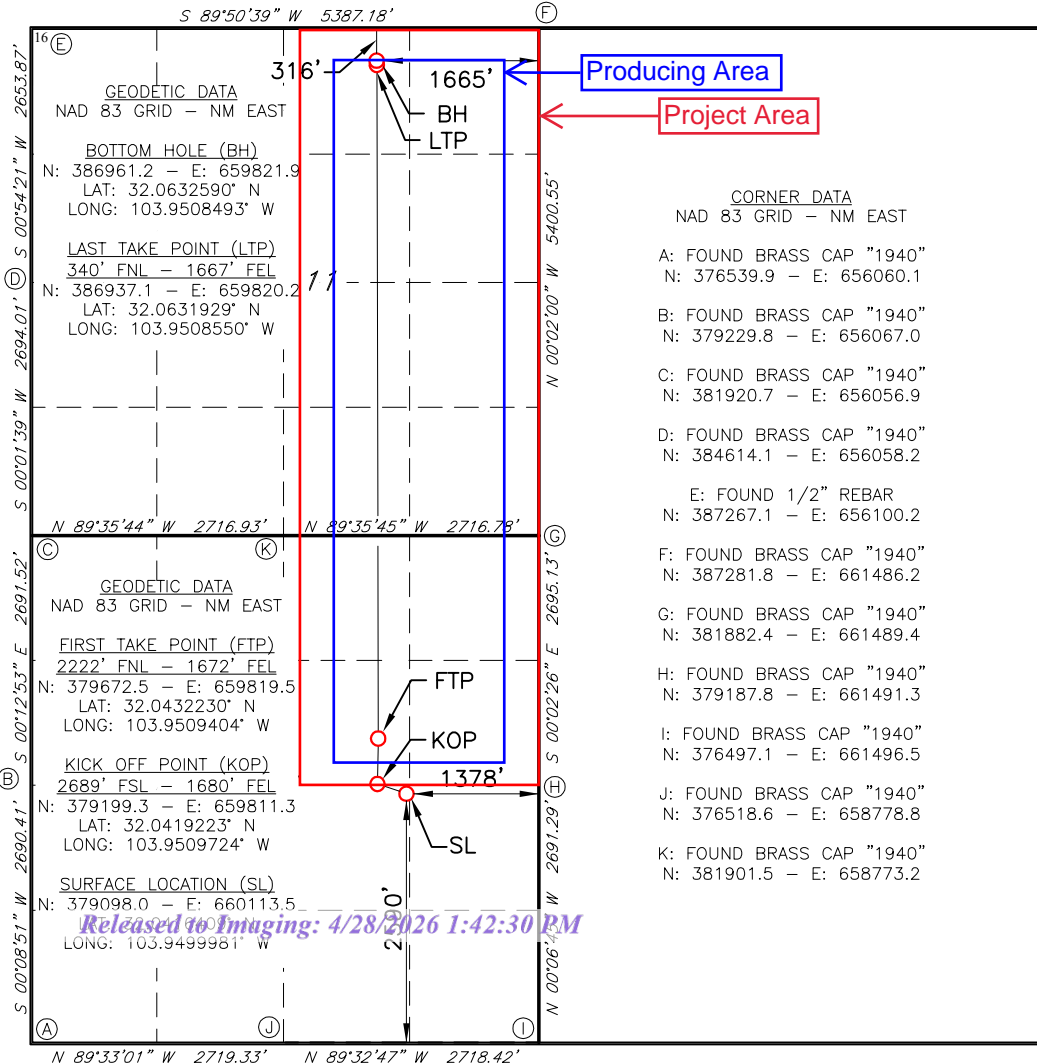
Form C-102  
Revised August 1, 2011  
Submit one copy to appropriate  
District Office

AMENDED REPORT  
AS DRILLED

WELL LOCATION AND ACREAGE DEDICATION PLAT

<sup>1</sup> API Number <b>30-015-49319</b>		<sup>2</sup> Pool Code <b>98220</b>		<sup>3</sup> Pool Name <b>PURPLE SAGE; WOLFCAMP (GAS)</b>					
<sup>4</sup> Property Code <b>332475</b>		<sup>5</sup> Property Name <b>FULLER 14/11 W1GB FED COM</b>					<sup>6</sup> Well Number <b>1H</b>		
<sup>7</sup> OGRID NO. <b>14744</b>		<sup>8</sup> Operator Name <b>MEWBOURNE OIL COMPANY</b>					<sup>9</sup> Elevation <b>2944'</b>		
<sup>10</sup> Surface Location									
UL or lot no. <b>J</b>	Section <b>14</b>	Township <b>26S</b>	Range <b>29E</b>	Lot Idn	Feet from the <b>2590</b>	North/South line <b>SOUTH</b>	Feet From the <b>1378</b>	East/West line <b>EAST</b>	County <b>EDDY</b>
<sup>11</sup> Bottom Hole Location If Different From Surface									
UL or lot no. <b>B</b>	Section <b>11</b>	Township <b>26S</b>	Range <b>29E</b>	Lot Idn	Feet from the <b>316</b>	North/South line <b>NORTH</b>	Feet from the <b>1665</b>	East/West line <b>EAST</b>	County <b>EDDY</b>
<sup>12</sup> Dedicated Acres <b>480</b>	<sup>13</sup> Joint or Infill	<sup>14</sup> Consolidation Code	<sup>15</sup> Order No.						

No allowable will be assigned to this completion until all interest have been consolidated or a non-standard unit has been approved by the division.

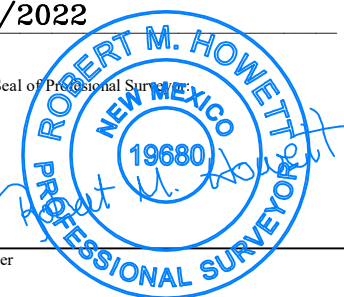


**17 OPERATOR CERTIFICATION**  
I hereby certify that the information contained herein is true and complete to the best of my knowledge and belief, and that this organization either owns a working interest or unleased mineral interest in the land including the proposed bottom hole location or has a right to drill this well at this location pursuant to a contract with an owner of such a mineral or working interest, or to a voluntary pooling agreement or a compulsory pooling order heretofore entered by the division.

Signature: *CCW* Date: 10/19/2022  
Printed Name: Christian Ward  
E-mail Address: cward@mewbourne.com

**18 SURVEYOR CERTIFICATION**  
I hereby certify that the well location shown on this plat was plotted from field notes of actual surveys made by me or under my supervision, and that the same is true and correct to the best of my belief.

Date of Survey: 06/07/2022  
Signature and Seal of Professional Surveyor: *Robert M. Howett*  
Certificate Number: 19680





Project: Eddy County, NM (NAD83)  
 Site: Sec 14-T26S-29E  
 Well: Fuller 14-11 W1GB Fed Com #1H  
 2590' FSL (Sec. 14) & 1376' FEL  
 Wellbore: Wellbore #1  
 Design: Wellbore #1

Map System: US State Plane 1983  
 Datum: North American Datum 1983  
 Ellipsoid: GRS 1980  
 Zone Name: New Mexico Eastern Zone

North  
 True North: -0.20°  
 Magnetic North: 8.38°  
 Magnetic Field Strength: 47.475 nT

WELL DETAILS

@ 2969.Ousft (594)

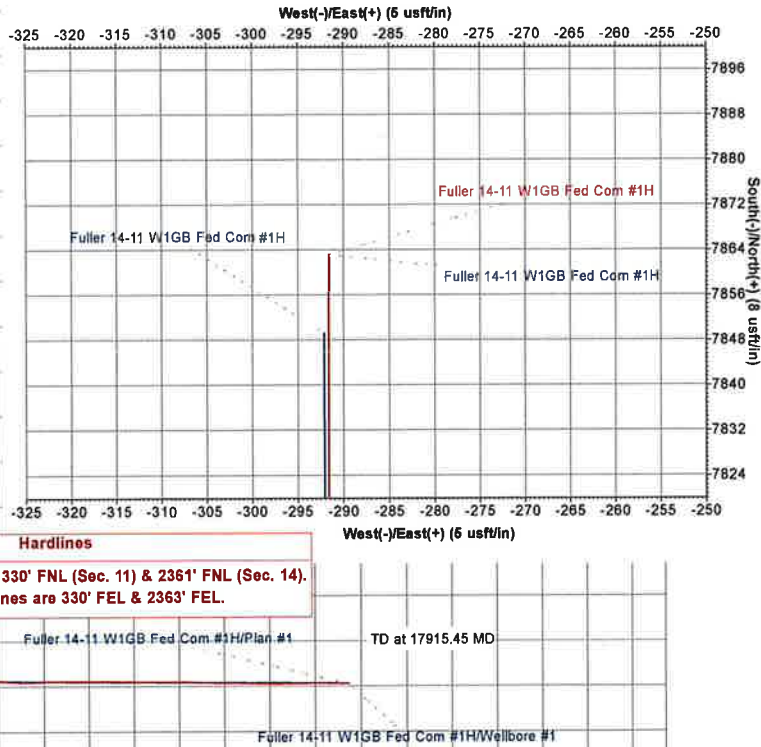
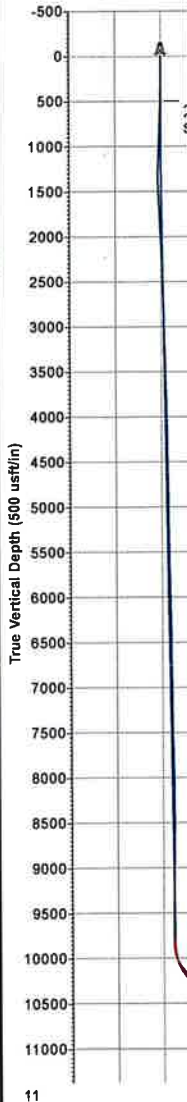
+N/-S	+E/-W	Northing	Easting	Latitude	Longitude	Slot
0.0	0.0	379098.00	660113.50	32° 2' 29.907 N	103° 56' 59.993 W	

SECTION DETAILS

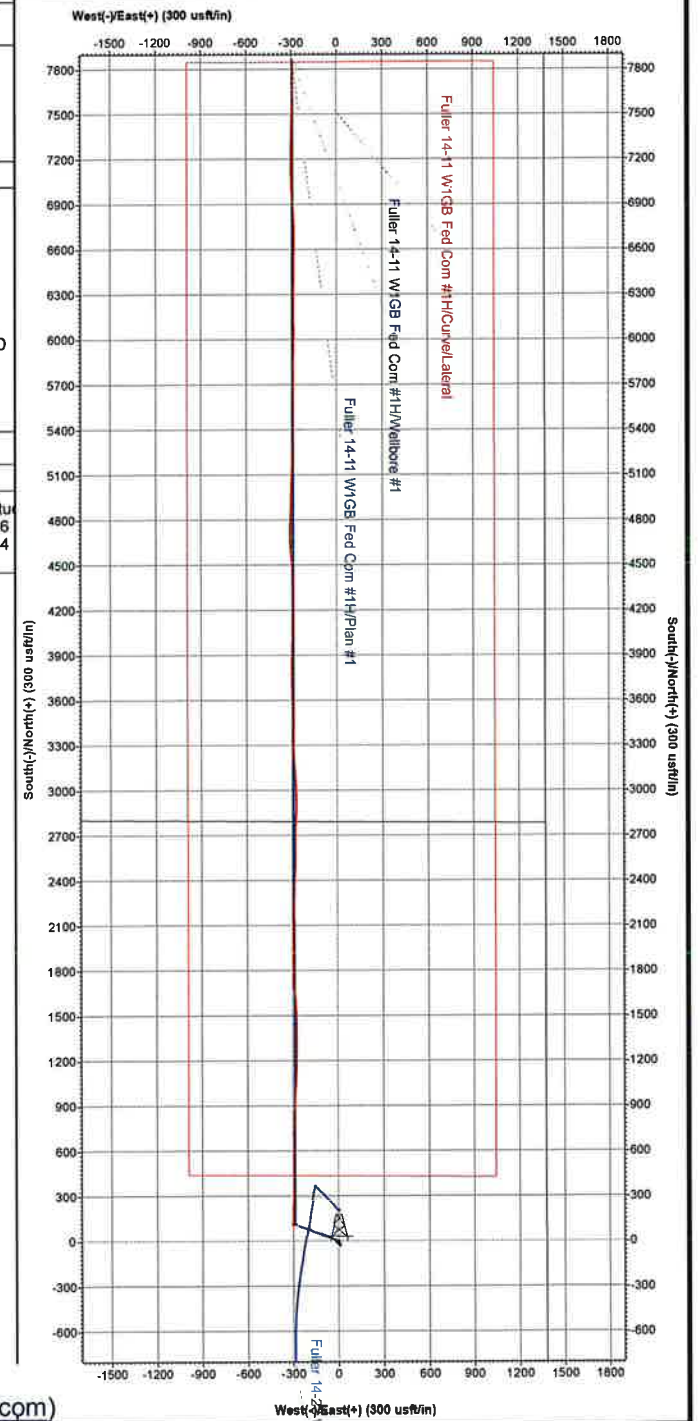
MD	Inc	Azi	TVD	+N/-S	+E/-W	Dleg	TFace	VSect	Annotation
0.0	0.00	0.00	0.0	0.0	0.0	0.00	0.00	0.0	
1100.0	0.00	0.00	1100.0	0.0	0.0	0.00	0.00	0.0	Start 100.00 hold at 1100.00 MD
1200.0	0.00	0.00	1200.0	0.0	0.0	0.00	0.00	0.0	Start Build 2.00 at 1200 MD
1304.7	2.09	291.42	1304.6	0.7	-1.8	2.00	291.42	0.8	Start 8342.35 hold at 1304.66 MD
9647.0	2.09	291.42	9641.4	112.0	-285.4	0.00	0.00	122.5	Start Drop -2.00 at 9647 MD
9751.7	0.00	0.00	9746.1	112.7	-287.2	2.00	180.00	123.3	Start 100.00 hold at 9751.67 MD
9851.7	0.00	0.00	9846.1	112.7	-287.2	0.00	0.00	123.3	Start DLS 10.00 TFO 359.96 at 9851 MD
10747.7	89.60	359.96	10419.0	681.7	-287.6	10.00	359.96	691.9	Start 7167.78 hold at 10747.68 MD
17915.5	89.60	359.96	10469.0	7849.3	-292.1	0.00	0.00	7854.7	TD at 17915.45 MD

DESIGN TARGET DETAILS

Name	+N/-S	+E/-W	Northing	Easting	Latitude	Longitude
W1GB 1H KOP	112.7	-287.2	379210.69	659826.28	32° 2' 31.032 N	103° 57' 3.326 W
W1GB 1H BHL	7849.3	-292.1	386947.25	659821.40	32° 3' 47.594 N	103° 57' 3.064 W



**Hardlines**  
 North/South hard lines are 330' FNL (Sec. 11) & 2361' FNL (Sec. 14).  
 East/West hard lines are 330' FEL & 2363' FEL.



Mewbourne Oil Company Fuller 14-11 W1GB Fed Com 1H Patterson 594							
DEPTH	INCLINATION	AZIMUTH	TVD	N/S	E/W	VERT SEC	DLS
0.00	0.00	0.00	0.00	0.00	0.00	0.00	0.00
176.00	0.30	64.38	176.00	0.20	0.42	0.18	0.17
376.00	1.20	154.38	375.98	-1.46	1.79	-1.53	0.62
566.00	1.50	158.38	565.93	-5.57	3.57	-5.70	0.17
753.00	2.20	163.38	752.83	-11.28	5.50	-11.48	0.38
851.00	2.50	166.38	850.75	-15.16	6.54	-15.40	0.33
951.00	2.60	167.38	950.65	-19.50	7.55	-19.76	0.11
1039.00	2.20	154.38	1038.57	-22.97	8.72	-23.27	0.76
1109.00	2.90	155.38	1108.50	-25.79	10.03	-26.14	1.00
1147.00	2.99	155.88	1146.45	-27.57	10.84	-27.95	0.26
1336.00	0.80	286.60	1335.38	-31.69	11.59	-32.10	1.89
1525.00	4.22	313.86	1524.17	-26.50	5.30	-26.68	1.86
1713.00	3.84	319.84	1711.71	-16.89	-3.75	-16.74	0.30
1902.00	3.44	315.28	1900.33	-8.02	-11.82	-7.58	0.26
2091.00	3.18	318.39	2089.01	-0.08	-19.29	0.64	0.17
2279.00	3.09	311.56	2276.73	7.17	-26.54	8.16	0.20
2468.00	3.25	307.90	2465.44	13.84	-34.58	15.12	0.14
2658.00	2.89	304.09	2655.17	19.84	-42.79	21.41	0.22
2846.00	2.40	299.58	2842.97	24.44	-50.14	26.29	0.28
3035.00	3.40	293.21	3031.72	28.60	-58.74	30.77	0.55
3224.00	3.88	292.27	3220.34	33.24	-69.82	35.81	0.26
3414.00	3.63	290.79	3409.93	37.81	-81.40	40.81	0.14
3602.00	3.83	291.68	3597.53	42.25	-92.81	45.67	0.11
3792.00	3.73	290.48	3787.12	46.76	-104.51	50.61	0.07
3981.00	3.28	286.62	3975.76	50.46	-115.45	54.72	0.27
4113.00	3.10	286.65	4107.56	52.56	-122.48	57.08	0.13
4270.00	2.95	286.67	4264.34	54.94	-130.42	59.74	0.10
4459.00	2.70	282.27	4453.11	57.27	-139.42	62.42	0.18
4647.00	1.94	295.68	4640.96	59.59	-146.60	65.00	0.49
4837.00	2.09	295.41	4830.84	62.47	-152.63	68.10	0.08
5026.00	2.20	282.23	5019.71	64.72	-159.28	70.59	0.27
5213.00	2.12	290.45	5206.58	66.68	-166.03	72.81	0.17
5404.00	2.05	285.66	5397.45	68.84	-172.63	75.21	0.10
5593.00	2.03	306.94	5586.33	71.77	-178.56	78.35	0.40
5781.00	2.68	301.51	5774.17	76.06	-184.97	82.89	0.36
5969.00	2.50	298.08	5961.98	80.29	-192.32	87.38	0.13
6158.00	2.37	288.47	6150.81	83.46	-199.66	90.82	0.23
6348.00	2.26	288.61	6340.66	85.90	-206.93	93.53	0.06
6536.00	2.48	283.55	6528.50	88.04	-214.40	95.94	0.16
6726.00	2.32	289.17	6718.33	90.27	-222.04	98.46	0.15
6915.00	2.31	283.18	6907.18	92.39	-229.36	100.85	0.13
7104.00	2.37	275.51	7096.02	93.63	-236.96	102.38	0.17
7292.00	2.62	286.29	7283.84	95.21	-244.95	104.25	0.28
7481.00	2.81	284.01	7472.63	97.55	-253.60	106.91	0.11
7670.00	3.45	298.73	7661.35	101.40	-263.08	111.11	0.54
7859.00	2.99	297.54	7850.05	106.41	-272.44	116.47	0.24
8048.00	1.95	277.42	8038.88	109.11	-280.00	119.44	0.71
8237.00	1.27	267.25	8227.80	109.42	-285.28	119.95	0.39
8425.00	2.25	288.55	8415.71	110.50	-290.85	121.23	0.62
8614.00	0.74	188.22	8604.66	110.47	-294.53	121.34	1.32
8802.00	1.10	219.24	8792.64	107.87	-295.85	118.79	0.32
8990.00	0.78	272.20	8980.62	106.51	-298.28	117.53	0.47
9179.00	0.68	179.68	9169.61	105.45	-299.56	116.51	0.56
9366.00	0.82	188.28	9356.59	103.02	-299.75	114.09	0.10
9555.00	0.40	254.07	9545.58	101.50	-300.58	112.60	0.40
9744.00	0.57	245.70	9734.57	100.93	-302.08	112.09	0.10
9793.00	0.70	209.58	9783.57	100.57	-302.45	111.74	0.85
9869.00	1.84	21.50	9859.56	101.29	-302.24	112.46	3.33
9916.00	8.29	1.80	9906.36	105.38	-301.86	116.53	14.02
9963.00	14.10	2.42	9952.44	114.50	-301.51	125.62	12.36
10010.00	21.58	2.11	9997.15	128.87	-300.95	139.97	15.91
10057.00	28.08	359.97	10039.79	148.59	-300.63	159.66	13.97
10104.00	32.97	0.88	10080.26	172.45	-300.44	183.50	10.46
10151.00	39.04	2.86	10118.26	200.05	-299.51	211.05	13.15
10198.00	43.60	2.71	10153.55	231.04	-298.00	241.96	9.69
10246.00	47.14	3.08	10187.27	265.15	-296.27	275.98	7.40
10293.00	52.25	1.03	10217.66	300.96	-295.01	311.71	11.36
10340.00	55.67	0.22	10245.31	338.95	-294.60	349.67	7.41
10387.00	58.44	0.74	10270.87	378.39	-294.27	389.06	5.96
10435.00	60.45	359.96	10295.27	419.72	-294.02	430.36	4.41
10482.00	61.88	359.69	10317.94	460.89	-294.15	471.50	3.09
10530.00	65.45	359.51	10339.23	503.90	-294.45	514.50	7.45
10577.00	68.84	0.74	10357.48	547.20	-294.35	557.77	7.60

10624.00	71.82	0.71	10373.30	591.45	-293.79	601.96	6.34
10671.00	74.49	1.10	10386.92	636.43	-293.07	646.88	5.74
10718.00	78.66	1.77	10397.83	682.12	-291.93	692.50	8.97
10765.00	82.15	0.74	10405.67	728.44	-290.92	738.75	7.74
10813.00	84.53	1.94	10411.23	776.10	-289.80	786.33	5.54
10908.00	86.08	1.36	10419.01	870.74	-287.08	880.81	1.74
11001.00	89.57	1.36	10422.54	963.63	-284.87	973.55	3.75
11095.00	90.53	4.85	10422.46	1057.48	-279.78	1067.14	3.85
11190.00	88.46	1.96	10423.31	1152.29	-274.13	1161.68	3.74
11284.00	89.91	359.11	10424.65	1246.26	-273.25	1255.56	3.41
11379.00	88.58	359.82	10425.90	1341.25	-274.15	1350.51	1.58
11474.00	91.11	359.37	10426.16	1436.24	-274.82	1445.46	2.71
11568.00	90.62	357.20	10424.74	1530.18	-277.63	1539.44	2.37
11662.00	87.62	354.89	10426.18	1623.93	-284.10	1633.36	4.02
11756.00	86.82	356.65	10430.74	1717.56	-291.03	1727.19	2.05
11850.00	88.98	359.00	10434.18	1811.41	-294.60	1821.11	3.40
11944.00	90.84	0.02	10434.33	1905.40	-295.40	1915.07	2.25
12039.00	90.96	0.80	10432.85	2000.39	-294.72	2009.96	0.83
12133.00	91.45	2.35	10430.87	2094.33	-292.14	2103.74	1.73
12228.00	90.65	1.79	10429.12	2189.25	-288.71	2198.47	1.03
12322.00	90.00	359.88	10428.59	2283.23	-287.34	2292.34	2.15
12417.00	90.22	2.66	10428.41	2378.20	-285.23	2387.16	2.94
12511.00	88.95	2.66	10429.09	2472.10	-280.87	2480.83	1.35
12606.00	88.15	359.09	10431.50	2567.04	-279.42	2575.65	3.85
12700.00	89.48	358.77	10433.44	2661.00	-281.18	2669.61	1.45
12794.00	89.51	4.96	10434.28	2754.90	-278.12	2763.33	6.59
12888.00	88.61	1.78	10435.82	2848.71	-272.60	2856.87	3.51
12983.00	88.92	359.30	10437.87	2943.68	-271.70	2951.74	2.64
13077.00	88.39	356.21	10440.07	3037.57	-275.39	3045.70	3.33
13171.00	91.79	356.55	10439.92	3131.37	-281.33	3139.66	3.63
13265.00	88.43	356.13	10439.74	3225.16	-287.32	3233.61	3.61
13359.00	92.75	358.82	10438.78	3319.03	-291.46	3327.57	5.41
13453.00	91.39	358.90	10435.38	3412.95	-293.33	3421.50	1.45
13548.00	90.25	358.96	10434.02	3507.92	-295.10	3516.47	1.20
13642.00	87.90	357.43	10435.54	3601.85	-298.06	3610.44	2.98
13736.00	89.41	359.98	10437.75	3695.79	-300.18	3704.40	3.15
13830.00	88.40	359.03	10439.54	3789.77	-300.99	3798.34	1.48
13924.00	89.57	1.54	10441.21	3883.75	-300.53	3892.23	2.95
14019.00	91.58	2.37	10440.26	3978.68	-297.28	3986.98	2.29
14114.00	86.51	359.34	10441.85	4073.61	-295.86	4081.80	6.22
14208.00	85.61	0.21	10448.31	4167.39	-296.23	4175.52	1.33
14303.00	90.06	0.54	10451.90	4262.29	-295.61	4270.34	4.70
14343.00	90.97	1.86	10451.54	4302.28	-294.78	4310.27	4.00
14438.00	91.62	359.19	10449.39	4397.25	-293.91	4405.13	2.90
14532.00	90.80	355.13	10447.40	4491.09	-298.57	4499.08	4.40
14627.00	90.20	354.54	10446.57	4585.70	-307.11	4593.95	0.89
14721.00	89.94	359.78	10446.46	4679.55	-311.77	4687.91	5.59
14816.00	90.42	2.68	10446.16	4774.52	-309.73	4782.73	3.09
14910.00	89.92	2.05	10445.88	4868.44	-305.84	4876.44	0.85
15004.00	89.54	1.27	10446.33	4962.40	-303.12	4970.23	0.93
15098.00	89.73	1.19	10446.93	5056.37	-301.11	5064.07	0.22
15192.00	89.59	2.47	10447.48	5150.32	-298.11	5157.84	1.36
15286.00	90.46	2.02	10447.45	5244.25	-294.42	5251.57	1.03
15381.00	89.47	359.76	10447.50	5339.23	-292.94	5346.43	2.59
15476.00	88.72	359.52	10449.00	5434.21	-293.53	5441.37	0.83
15570.00	89.30	0.55	10450.63	5528.20	-293.48	5535.29	1.25
15664.00	90.02	0.74	10451.19	5622.19	-292.42	5629.17	0.79
15758.00	89.65	0.07	10451.46	5716.19	-291.75	5723.08	0.82
15852.00	89.92	1.25	10451.81	5810.18	-290.67	5816.97	1.29
15947.00	89.74	0.86	10452.10	5905.16	-288.93	5911.82	0.46
16041.00	89.58	0.49	10452.66	5999.15	-287.82	6005.71	0.42
16135.00	88.54	359.61	10454.21	6093.14	-287.73	6099.62	1.45
16230.00	88.76	359.90	10456.44	6188.11	-288.13	6194.54	0.38
16325.00	88.15	359.96	10459.01	6283.08	-288.25	6289.45	0.65
16419.00	88.76	0.73	10461.55	6377.04	-287.68	6383.32	1.05
16514.00	89.29	1.34	10463.17	6472.01	-285.97	6478.17	0.85
16608.00	89.58	1.14	10464.10	6565.98	-283.94	6572.00	0.37
16702.00	89.46	359.64	10464.89	6659.97	-283.30	6665.90	1.60
16796.00	88.83	357.92	10466.29	6753.94	-285.30	6759.88	1.95
16890.00	89.10	356.78	10467.98	6847.82	-289.65	6853.85	1.24
16985.00	87.60	356.07	10470.72	6942.59	-295.56	6948.78	1.75
17080.00	90.18	357.20	10472.56	7037.40	-301.13	7043.73	2.96
17173.00	90.66	359.09	10471.88	7130.35	-304.14	7136.72	2.09
17267.00	90.97	0.78	10470.55	7224.33	-304.24	7230.65	1.83
17362.00	90.49	0.89	10469.34	7319.32	-302.86	7325.52	0.51
17456.00	90.57	3.42	10468.47	7413.24	-299.33	7419.24	2.69
17550.00	90.46	359.57	10467.62	7507.18	-296.88	7513.03	4.10
17644.00	89.02	2.12	10468.05	7601.16	-295.50	7606.89	3.11
17739.00	90.18	0.35	10468.72	7696.13	-293.45	7701.72	2.23
17833.00	90.00	359.87	10468.57	7790.13	-293.28	7795.65	0.54

17886.00	89.48	0.11	10468.81	7843.13	-293.29	7848.61	1.08	LAST SVY
17906.00	89.48	0.11	10468.90	7863.20	-291.60	7868.60	0.00	PROJ TO BIT

Intent  As Drilled

API #									
Operator Name:					Property Name:				Well Number

Kick Off Point (KOP)

UL	Section	Township	Range	Lot	Feet	From N/S	Feet	From E/W	County
Latitude					Longitude				NAD

First Take Point (FTP)

UL	Section	Township	Range	Lot	Feet	From N/S	Feet	From E/W	County
Latitude					Longitude				NAD

Last Take Point (LTP)

UL	Section	Township	Range	Lot	Feet	From N/S	Feet	From E/W	County
Latitude					Longitude				NAD

Is this well the defining well for the Horizontal Spacing Unit?

Is this well an infill well?

If infill is yes please provide API if available, Operator Name and well number for Defining well for Horizontal Spacing Unit.

API #									
Operator Name:					Property Name:				Well Number

KZ 06/29/2018

Submit a Copy To Appropriate District Office
District I - (575) 393-6161
1625 N. French Dr., Hobbs, NM 88240
District II - (575) 748-1283
811 S. First St., Artesia, NM 88210
District III - (505) 334-6178
1000 Rio Brazos Rd., Aztec, NM 87410
District IV - (505) 476-3460
1220 S. St. Francis Dr., Santa Fe, NM 87505

State of New Mexico
Energy, Minerals and Natural Resources

Form C-103
Revised July 18, 2013

OIL CONSERVATION DIVISION
1220 South St. Francis Dr.
Santa Fe, NM 87505

WELL API NO. 30-015-49319
5. Indicate Type of Lease STATE [ ] FEE [ ] FED [x]
6. State Oil & Gas Lease No.
7. Lease Name or Unit Agreement Name Fuller 14/11 W1GB Fed Com
8. Well Number 1H
9. OGRID Number 14744
10. Pool name or Wildcat Purple Sage; Wolfcamp (Gas) 98220
11. Elevation (Show whether DR, RKB, RT, GR, etc.) 2944

SUNDRY NOTICES AND REPORTS ON WELLS
(DO NOT USE THIS FORM FOR PROPOSALS TO DRILL OR TO DEEPEN OR PLUG BACK TO A DIFFERENT RESERVOIR. USE "APPLICATION FOR PERMIT" (FORM C-101) FOR SUCH PROPOSALS.)
1. Type of Well: Oil Well [ ] Gas Well [x] Other [ ]
2. Name of Operator Mewbourne Oil Company
3. Address of Operator PO Box 5270, Hobbs NM 88240
4. Well Location Unit Letter J : 2590 feet from the South line and 1378 feet from the East line
Section 14 Township 26S Range 29E NMPM Eddy County
11. Elevation (Show whether DR, RKB, RT, GR, etc.) 2944

12. Check Appropriate Box to Indicate Nature of Notice, Report or Other Data

NOTICE OF INTENTION TO:
PERFORM REMEDIAL WORK [ ] PLUG AND ABANDON [ ]
TEMPORARILY ABANDON [ ] CHANGE PLANS [ ]
PULL OR ALTER CASING [ ] MULTIPLE COMPL [ ]
DOWNHOLE COMMINGLE [ ]
CLOSED-LOOP SYSTEM [ ]
OTHER: [ ]
SUBSEQUENT REPORT OF:
REMEDIAL WORK [ ] ALTERING CASING [ ]
COMMENCE DRILLING OPNS. [ ] P AND A [ ]
CASING/CEMENT JOB [ ]
OTHER: Completion Sundry [x]

13. Describe proposed or completed operations. (Clearly state all pertinent details, and give pertinent dates, including estimated date of starting any proposed work). SEE RULE 19.15.7.14 NMAC. For Multiple Completions: Attach wellbore diagram of proposed completion or recompletion.

10/04/2022 - Perf and Frac 1 - 59 Stages from 10606' to 17852'. Frac horizontal Wolfcamp w/17801826 gals PW slickwater, carrying 18439233# local 100 mesh sand. Flowback well for cleanup.

10/11/2022 Drill out frac plugs to PBTD @ 17885'.

10/14/2022 PWOL.

Salt Top 1260'-Salt Base 2885'-Delaware (Lamar) 3080'-Bell Canyon 3105'-Cherry Canyon 3990'-Manzanita Marker 4160'-Bone Spring 6910'-1st Bone Spring Sand 7820'-2nd Bone Spring Sand 8625'-3rd Bone Spring Sand 9690'-Wolfcamp 10080'

REQUEST FOR OCD EXTENSION OF TIME TO FILE BLM APPROVED FORM 3160.4

Spud Date: 05/18/2022

Rig Release Date: 06/07/2022

I hereby certify that the information above is true and complete to the best of my knowledge and belief.

SIGNATURE Jackie Lathan TITLE\_Regulatory DATE\_11/18/2022

Type or print name\_Jackie Lathan E-mail address: jlathan@mewbourne.com PHONE: 575-393-5905

For State Use Only

APPROVED BY: TITLE DATE

Conditions of Approval (if any):

Submit To Appropriate District Office Two Copies District I 1625 N. French Dr., Hobbs, NM 88240 District II 811 S. First St., Artesia, NM 88210 District III 1000 Rio Brazos Rd., Aztec, NM 87410 District IV 1220 S. St. Francis Dr., Santa Fe, NM 87505	<b>State of New Mexico</b> <b>Energy, Minerals and Natural Resources</b>  <b>Oil Conservation Division</b> <b>1220 South St. Francis Dr.</b> <b>Santa Fe, NM 87505</b>	<b>Form C-105</b> Revised April 3, 2017  1. WELL API NO. 30-015-49319 2. Type of Lease <input type="checkbox"/> STATE <input type="checkbox"/> FEE <input checked="" type="checkbox"/> FED/INDIAN 3. State Oil & Gas Lease No.
--	---	---

**WELL COMPLETION OR RECOMPLETION REPORT AND LOG**

4. Reason for filing:  <input checked="" type="checkbox"/> <b>COMPLETION REPORT</b> (Fill in boxes #1 through #31 for State and Fee wells only)  <input type="checkbox"/> <b>C-144 CLOSURE ATTACHMENT</b> (Fill in boxes #1 through #9, #15 Date Rig Released and #32 and/or #33; attach this and the plat to the C-144 closure report in accordance with 19.15.17.13.K NMAC)	5. Lease Name or Unit Agreement Name Fuller 14/11 W1GB Fed Com 6. Well Number: 1H
---	---

7. Type of Completion:  
 NEW WELL  WORKOVER  DEEPENING  PLUGBACK  DIFFERENT RESERVOIR  OTHER

8. Name of Operator Mewbourne Oil Company 10. Address of Operator PO Box 5270 Hobbs, NM 88241	9. OGRID 14744  11. Pool name or Wildcat Purple Sage; Wolfcamp (Gas) 98220
---	---

12. Location	Unit Ltr	Section	Township	Range	Lot	Feet from the	N/S Line	Feet from the	E/W Line	County
<b>Surface:</b>	J	14	26S	29E		2590	South	1378	East	Eddy
<b>BH:</b>	B	11	26S	29E		316	North	1665	East	Eddy

13. Date Spudded 05/18/2022	14. Date T.D. Reached 06/05/2022	15. Date Rig Released 06/07/2022	16. Date Completed (Ready to Produce) 10/14/2022	17. Elevations (DF and RKB, RT, GR, etc.) 2944 GL
18. Total Measured Depth of Well 17906'	19. Plug Back Measured Depth 17885'	20. Was Directional Survey Made? Yes	21. Type Electric and Other Logs Run GR	

22. Producing Interval(s), of this completion - Top, Bottom, Name  
 10606' – 17852 Wolfcamp

**CASING RECORD (Report all strings set in well)**

CASING SIZE	WEIGHT LB./FT.	DEPTH SET	HOLE SIZE	CEMENTING RECORD	AMOUNT PULLED
13 3/8"	54.5#	1120'	17 1/2"	825	Surface
9 5/8"	40#	4165'	12 1/4"	1125	Surface
7"	29#	9778'	8 3/4"	875	Surface

24. LINER RECORD				25. TUBING RECORD			
SIZE	TOP	BOTTOM	SACKS CEMENT	SCREEN	SIZE	DEPTH SET	PACKER SET
4 1/2"	9583' (MD)	17903' (MD)	575				

26. Perforation record (interval, size, and number)  10606' – 17852 (59 stages, 0.39" EHD, 2124 holes)	27. ACID, SHOT, FRACTURE, CEMENT, SQUEEZE, ETC. <table border="1" style="width:100%; border-collapse: collapse;"> <thead> <tr> <th>DEPTH INTERVAL</th> <th>AMOUNT AND KIND MATERIAL USED</th> </tr> </thead> <tbody> <tr> <td>10606' – 17852'</td> <td>17801826 gals PW slickwater, carrying 18439233# local 100 mesh sand.</td> </tr> </tbody> </table>	DEPTH INTERVAL	AMOUNT AND KIND MATERIAL USED	10606' – 17852'	17801826 gals PW slickwater, carrying 18439233# local 100 mesh sand.
DEPTH INTERVAL	AMOUNT AND KIND MATERIAL USED				
10606' – 17852'	17801826 gals PW slickwater, carrying 18439233# local 100 mesh sand.				

**PRODUCTION**

Date First Production 10/14/2022		Production Method (Flowing, gas lift, pumping - Size and type pump) Flowing			Well Status (Prod. or Shut-in) Producing		
Date of Test 10/15/2022	Hours Tested 24	Choke Size 24/64	Prod'n For Test Period	Oil - Bbl 96	Gas - MCF 370	Water - Bbl. 1612	Gas - Oil Ratio 370
Flow Tubing Press. NA	Casing Pressure 1780	Calculated 24-Hour Rate	Oil - Bbl. 96	Gas - MCF 370	Water - Bbl. 1612	Oil Gravity - API - (Corr.)	

29. Disposition of Gas (Sold, used for fuel, vented, etc.)  
 Sold

30. Test Witnessed By  
 Robin Terrell

31. List Attachments  
 As drilled C-102, Directional survey, C-104, completion sundry, additional kickoff sheet & Wellbore schematic


32. If a temporary pit was used at the well, attach a plat with the location of the temporary pit.

33. Rig Release Date: 06/07/2022

34. If an on-site burial was used at the well, report the exact location of the on-site burial:  
 Latitude \_\_\_\_\_ Longitude \_\_\_\_\_ NAD83

*I hereby certify that the information shown on both sides of this form is true and complete to the best of my knowledge and belief*

Jackie Lathan Printed

Signature  Name Title Regulatory Date 11/21/22

E-mail Address jlathan@mewbourne.com

# INSTRUCTIONS

This form is to be filed with the appropriate District Office of the Division not later than 20 days after the completion of any newly-drilled or deepened well and not later than 60 days after completion of closure. When submitted as a completion report, this shall be accompanied by one copy of all electrical and radio-activity logs run on the well and a summary of all special tests conducted, including drill stem tests. All depths reported shall be measured depths. In the case of directionally drilled wells, true vertical depths shall also be reported. For multiple completions, items 11, 12 and 26-31 shall be reported for each zone.

## INDICATE FORMATION TOPS IN CONFORMANCE WITH GEOGRAPHICAL SECTION OF STATE

Southeastern New Mexico		Northwestern New Mexico	
T. Rustler	T. Bell Canyon 3105	T. Ojo Alamo	T. Penn A"
T. Salt 126	T. Strawn	T. Kirtland	T. Penn. "B"
B. Salt 2885	T. Atoka	T. Fruitland	T. Penn. "C"
T. Yates	T. Miss	T. Pictured Cliffs	T. Penn. "D"
T. Capitan	T. Devonian	T. Cliff House	T. Leadville
T. Queen	T. Silurian	T. Menefee	T. Madison
T. Grayburg	T. Montoya	T. Point Lookout	T. Elbert
T. San Andres	T. Simpson	T. Mancos	T. McCracken
T. Glorieta	T. McKee	T. Gallup	T. Ignacio Otzte
T. Paddock	T. Cherry Canyon 3990	Base Greenhorn	T. Granite
T. Blinebry	T. Manzanita 4160	T. Dakota	
T. Tubb	T. Lamar 3080	T. Morrison	
T. Drinkard	T. Bone Springs 6910	T. Todilto	
T. Abo	T. 1 <sup>st</sup> Bone Spring 7820	T. Entrada	
T. Wolfcamp 10080	T. 2 <sup>nd</sup> Bone Spring 8625	T. Wingate	
T. Penn	T. 3 <sup>rd</sup> Bone Spring 9690	T. Chinle	
T. Cisco (Bough C)	T.	T. Permian	

### OIL OR GAS SANDS OR ZONES

No. 1, from.....to..... No. 3, from.....to.....  
 No. 2, from.....to..... No. 4, from.....to.....

### IMPORTANT WATER SANDS

Include data on rate of water inflow and elevation to which water rose in hole.

No. 1, from.....to.....feet.....  
 No. 2, from.....to.....feet.....  
 No. 3, from.....to.....feet.....

### LITHOLOGY RECORD (Attach additional sheet if necessary)

From	To	Thickness In Feet	Lithology	From	To	Thickness In Feet	Lithology

Mewbourne Oil Company  
 Well Name: Fuller 14/11 W1GB Fed Com #1H  
 API: 30-015-49319 Property Code: 332475 Eddy Co., NM  
 Pools: 98220-PURPLE SAGE; WOLFCAMP (GAS) 480 Acre Spacing  
 Updated by: Christian Ward  
 Date Updated: 10/19/2022

Spud Date: 5/18/2022  
 TD Date: 6/5/2022  
 Rig Release: 6/7/2022  
 Frac Complete: 10/4/2022  
 Drill-out Complete: 10/11/2022  
 Prod Date: 10/15/2022  
 GL: 2944

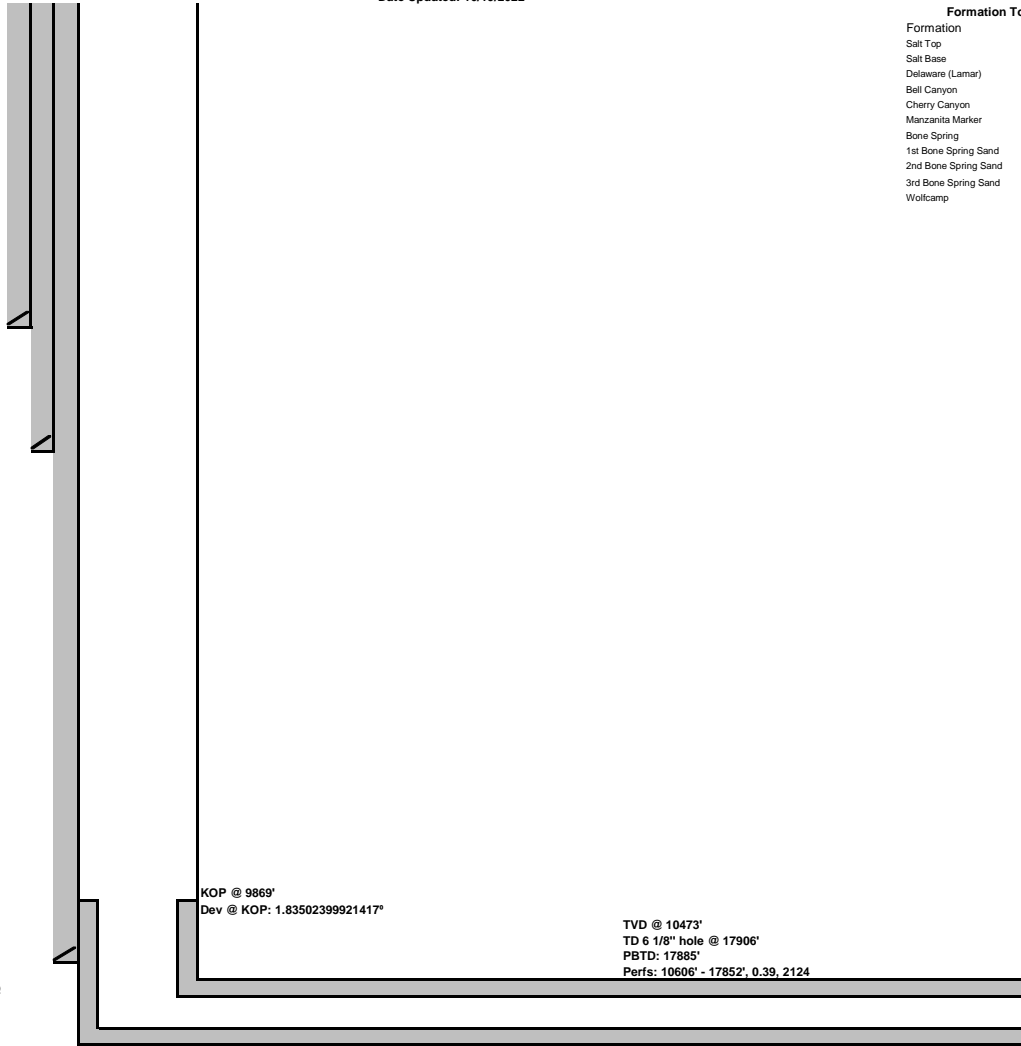
Formation Tops	
Formation	Depth
Salt Top	1260'
Salt Base	2885'
Delaware (Lamar)	3080'
Bell Canyon	3105'
Cherry Canyon	3990'
Manzanita Marker	4160'
Bone Spring	6910'
1st Bone Spring Sand	7820'
2nd Bone Spring Sand	8625'
3rd Bone Spring Sand	9690'
Wolfcamp	10080'

**Surface**  
 17 1/2" x 13 3/8" 54.5# J55 STC  
 Set @ 1120'  
 Cmt w/ 825 sx  
 Circ. 145 sx to pit  
 Lead TOC: Surface  
 Tail TOC: 734'

**Intermediate**  
 12 1/4" x 9 5/8" 40# L80 LTC  
 Set @ 4165'  
 Cmt w/ 1125 sx  
 Circ. 344 sx to pit  
 Lead TOC: Surface  
 Tail TOC: 3322'

**Production**  
 8 3/4" x 7" 29# HCP110 BT&C  
 Set @ 9778'  
 Cmt w/ 875 sx  
 Circ. 106 sx to pit  
 Lead TOC: Surface  
 Tail TOC: 6638'

**Liner**  
 6 1/8" x 4 1/2" 13.5# HCP110 CDC HTQ  
 Set @ 9582' - 17903'  
 TOC @ 9582'  
 Cmt w/ 600 sx



Frac horizontal Wolfcamp w/17801826 gals PW slickwater, carrying 18439233# local 100 mesh sand

	MD	TVD	Lat	Long	Footage	Section	Town/Rng	Lease	Prod f/ lease	Qtr
SHL	0	0	32.0416409	-103.9499981	2590'	FSL 1378'	FEL 14 26S/29E	NMNM011038	Yes	NWSE
KOP	9,869	9,860	32.0419223	-103.9590972	2689'	FSL 1680'	FEL 14 26S/29E	NMNM011038	Yes	NWSE
FTP	10,606	10,367	32.0432230	-103.9509404	2222'	FNL 1672'	FEL 14 26S/29E	NMNM011038	Yes	SWNE
PPP2	12,835	10,436	32.0493301	-103.9508704	0'	FSL 1655'	FEL 11 26S/29E	NMNM121953	Yes	SWNE
PPP3	16,874	10,466	32.0604253	-103.9508359	1347'	FNL 1657'	FEL 11 26S/29E	NMNM011039	Yes	NWNE
LTP	17,882	10,469	32.0631929	-103.9508550	340'	FNL 1667'	FEL 11 26S/29E	NMNM011039	Yes	NWNE
BHL	17,906	10,469	32.0632590	-103.9508493	316'	FNL 1665'	FEL 11 26S/29E	NMNM011039	Yes	NWNE

Sante Fe Main Office  
Phone: (505) 476-3441

General Information  
Phone: (505) 629-6116

Online Phone Directory  
<https://www.emnrd.nm.gov/ocd/contact-us>

**State of New Mexico**  
**Energy, Minerals and Natural Resources**  
**Oil Conservation Division**  
**1220 S. St Francis Dr.**  
**Santa Fe, NM 87505**

ACKNOWLEDGMENTS

Action 160542

**ACKNOWLEDGMENTS**

Operator: MEWBOURNE OIL CO P.O. Box 5270 Hobbs, NM 88240	OGRID: 14744
	Action Number: 160542
	Action Type: [C-104] Completion Packet (C-104C)

**ACKNOWLEDGMENTS**

<input checked="" type="checkbox"/>	I hereby certify that the required Water Use Report has been, or will be, submitted for this wells completion.
<input checked="" type="checkbox"/>	I hereby certify that the required FracFocus disclosure has been, or will be, submitted for this wells completion.

Sante Fe Main Office  
Phone: (505) 476-3441

General Information  
Phone: (505) 629-6116

Online Phone Directory  
<https://www.emnrd.nm.gov/ocd/contact-us>

**State of New Mexico**  
**Energy, Minerals and Natural Resources**  
**Oil Conservation Division**  
**1220 S. St Francis Dr.**  
**Santa Fe, NM 87505**

CONDITIONS

Action 160542

**CONDITIONS**

Operator: MEWBOURNE OIL CO P.O. Box 5270 Hobbs, NM 88240	OGRID: 14744
	Action Number: 160542
	Action Type: [C-104] Completion Packet (C-104C)

**CONDITIONS**

Created By	Condition	Condition Date
raul.robles	None	4/28/2026