

Submit 1 Copy To Appropriate District Office
District I - (575) 393-6161
1625 N. French Dr., Hobbs, NM 88240
District II - (575) 748-1283
811 S. First St., Artesia, NM 88210
District III - (505) 334-6178
1000 Rio Brazos Rd., Aztec, NM 87410
District IV - (505) 476-3460
1220 S. St. Francis Dr., Santa Fe, NM 87505

State of New Mexico
Energy, Minerals and Natural Resources

Form C-103
Revised July 18, 2013

OIL CONSERVATION DIVISION
1220 South St. Francis Dr.
Santa Fe, NM 87505

WELL API NO. 30-045-26862
5. Indicate Type of Lease STATE [] FEE [x]
6. State Oil & Gas Lease No.
7. Lease Name or Unit Agreement Name Basin
8. Well Number #001
9. OGRID Number 1739
10. Pool name or Wildcat Undesignated MV

SUNDRY NOTICES AND REPORTS ON WELLS
(DO NOT USE THIS FORM FOR PROPOSALS TO DRILL OR TO DEEPEN OR PLUG BACK TO A DIFFERENT RESERVOIR. USE "APPLICATION FOR PERMIT" (FORM C-101) FOR SUCH PROPOSALS.)

1. Type of Well: Oil Well [x] Gas Well [] Other []

2. Name of Operator Basin Disposal Inc.

3. Address of Operator 200 Montana Blvd, Bloomfield NM 87413

4. Well Location
Unit Letter: F 2207 feet from the North line and 1870 feet from the West line
Section 03 Township 29N Range 11W NMPM San Juan County

11. Elevation (Show whether DR, RKB, RT, GR, etc.) 5710' GL

12. Check Appropriate Box to Indicate Nature of Notice, Report or Other Data

NOTICE OF INTENTION TO:
PERFORM REMEDIAL WORK [] PLUG AND ABANDON []
TEMPORARILY ABANDON [] CHANGE PLANS []
PULL OR ALTER CASING [] MULTIPLE COMPL []
DOWNHOLE COMMINGLE []
CLOSED-LOOP SYSTEM []
OTHER []

SUBSEQUENT REPORT OF:
REMEDIAL WORK [x] ALTERING CASING []
COMMENCE DRILLING OPNS. [] P AND A []
CASING/CEMENT JOB []
OTHER: [x]

13. Describe proposed or completed operations. (Clearly state all pertinent details, and give pertinent dates, including estimated date of starting any proposed work). SEE RULE 19.15.7.14 NMAC. For Multiple Completions: Attach wellbore diagram of proposed completion or recompletion.

Basin Disposal, Inc, conducted a casing squeeze, packer reinstall and is requesting a packer depth exception. Attached are the summary report, WBD, email documentation and MIT chart.

Spud Date: []

Rig Release Date: []

I hereby certify that the information above is true and complete to the best of my knowledge and belief.

SIGNATURE Arleen Smith TITLE: Regulatory DATE 04/29/2026

Type or print name Arleen Smith E-mail address: arleen@walsheng.net PHONE: 505-327-4892

For State Use Only

APPROVED BY: TITLE DATE
Conditions of Approval (if any)



Casing Squeeze, Packer Reinstall Summary Report

Basin Disposal Inc

Basin #001

API# 30-045-26862

2207 FNL, 1870 FWL Sec 03-T29N-R11W

San Juan County, NM

Work Details:

- 2/27/26 Injection string pressure 1300 psi , casing pressure 410 psi. RIH 2.12" gauge ring tag @ 3623', TOH, RIH 2.25" gauge ring, tag @3623'. Signaling a packer issue down hole. After setting a plug in packer on/off tool @ 3585' and TOH. RIH JDC retrieval tool, tagged @ 3623' Plug determined to fallen through.RD
- 3/12/26 Well still injecting, casing pressure @ 380 psi. Tubing @ 1250 psi when not injecting. RU EDSI pressure test lubricator. RIH with retrieval tool. Found plug @ 3611'. Attempted to fish plug to no success. Set plug in on/off tool, passed positive and negative pressure tests No communication between tbs and casing.
- 3/14/26 SICP=560 psi, SITP =15.5 psi Bled down, vented csg for 3 hrs. Csg slugging fluids approx. 5-10 seconds, recovered 14bbls of fluids. SI
- 3/18/26 SICP=605psi, SITP=8psi. MIRU AWS #880. ND wellhead, NU BOP. Disengaged from On/Off tool, TOH w/ 3-1/2" IPC tbg. RU TWG Wireline, Ran CBL, tagged high at 3504'KB. Round trip csg scraper to 3555'KB. Shut in well and SDON.
- 3/19/26 SICP=340psi Set RBP at 3536'KB. LD single, roll hole with fresh water. Set packer at 3484'KB. P/T RBP to 2000psi, good test. Unset Packer, test entire csg interval to 1000psi, lost 500psi in 2 min. Multiple packer sets found leak off F/385' - T/417' (1100# to 600# in 1min 15 secs). From Surface - T/385' good to 1000psi, F/417' - T/3536' good to 1200psi. RIH, retrieved RBP. PUH and set at 625'KB. Load csg, set Pkr at 540' and test RBP to 1500psi, good test. PUH and set Pkr at 385'. Established an injection rate into leak off at ~0.4bpm at 1150psi. Discussed with EIC (M. Thompson), Elvis Flores, Dean Mestas. TOH with 5-1/2" Packer. Shut in well and SDON
- 3/20/26 SICP=0psi. Dumped 250lbs of sand on RBP. Squeezed csg leak (385'-417') w/ 25sx Cl "G" neat cement mixed at 14.9ppg (33cuft, 5.9bbl, 1.32yld, 6.3gps). Shut in w/ 1350psi. SI & SDFW.

Work Details (Cont'd):

- 3/23/26 SICP=0psi upon arrival. ND BOP. Picked up 6ea DC's and RIH with 4jts of 2-7/8" workstring, drilled cement. P/T to 660psi, lost 12psi in 30 minutes (1.8% w/ RBP at 625', minimal capacity), good test. TOH w/ DC's. Retrieved RBP and RIH on 19jts of 2-7/8" tbg tagged at 585'KB. SI & SDON.
- 3/24/26 SICP=1100psi upon arrival. Cleaned out fill to production packer at 3589'. Had State of NM Health & Safety compliance inspection. TIH w/ On/Off tool for packer, RIH to 3450'KB. SI & SDON.
- 3/26/26 SICP=1020psi. Discussed today's procedures and added a scraper run down to G-6 packer to clean up csg depth for new packer set. TOH w/ 2-7/8 tbg and On/Off tool. RIH on 115jts of 2-7/8" tbg to Paker at 3589'KB, circulated csg clean. TOH w/ scrpr, trip back with On/Off tool and RIH to 3575'. Shut-in & SDON.
- 3/27/26 SICP=1015psi. Pump 110bbl kill mud(14ppg). RIH and Latch/Unset G6 Pkr @ 3589'KB. LD 2 jts of tbg, swabbing csg. TOH for drain sub, punctured rupture disc, retrieved F-Plug. TOH w/ G6 Pkr. Retrieved R-Plug from on top of R4 Pkr, 5.5hrs, several runs. Run new prod packer to depth on original Special Clearance Coupling 3-1/2" IPC tbg, evacuate kill mud, failed negative test.
- 3/28/26 Continued from 24hr ops: Packer failed neg test. Installed Washington head 3-12' Rubber F/High Tech Tools. Moved Pkr to original depth under pressure, failed neg test. Pkr to 3531'KB (121' above perf), good neg test, good MIT at 515psi. Wait on Pkr depth variance from NMOCD/UIC. Secure well. SDFW.
- 3/30/26 Received approval for packer setting depth exception f/ John Garcia & Tony Harris NMOCD/UIC. Pulled off of pkr, circ fresh to clean off plug, pumped pkr fluid, engaged On/Off. Pkr at 3522'KB, 14K compression. ND BOPE, NU wellhead. Retrieved X-Plug, Pre-Lim MIT. Flowback ~33bbls, Pumped 72bbls fresh, 3.6bpm at 1450psi. SDON.
- 3/31/26 SICP=891psi, SITP=1020psi upon arrival. Set X-Plug in On/Off tool, performed neg test on inj string. P/T inj string to 2000psi, both good. Csg initially with no flow, attempted MIT, failed. Csg had flow at 1.88bph for ~2hrs, shut in, SDON.
- 4/1/26 SICP=604psi, SITP=0psi upon arrival. Bled off csg, flow at 1.8bph, SI csg, built to 780psi in 10 min. ND WH, NU BOPE. "Hard" set packer, flows reduced but still remain. Unset Pkr, wash passed at 0.5bpm, reset. No help, flow & pressure build up increased. Move up hole 1jt, same results. SDON.
- 4/2/26 SICP=987psi, SITP=0psi upon arrival. Retrieved X-Plug, verified injection into well. SD for Easter weekend.

Work Details (Cont'd):

- 4/06/26 SICP=983psi, SITP=1015psi upon arrival. Pumped 82bbl kill mud(14ppg) while holding back pressure. TOH w/ 3-1/2" & AS-1X packer. Ran redressed AS-1X w/ preset X-plug and TIH on 107jts of original 3-1/2", 9.3#, IPC, J55 tubing, set Packer at 3531'KB. , perform neg & pos test, both good. ND BOPE, NU WH.
- 4/07/26 SICP=228psi, SITP=0psi upon arrival. Welder completed injection line repair. RU Expert DH Slickline & Wellcheck. RIH w 2.34 GR to X-Plug and retrieved X-Plug. Performed MIT w/ NMOCD witness and could not pass MIT, falling at 25-30psi/min. Reset X-plug, test tbg, good. ND WH, NU BOPE. Unlatched from On/Off tool. Csg kicking trapped air. Decided to shut in and pump 1.5x volume tomorrow morning and retest csg. SDON.
- 4/8/26 SICP=283psi, SITP=300psi upon arrival. Well pressure test and negative tests fluctuating throughout the day. Packer at 3531'KB, P/T & Neg test good with on/off tool attached, failed when not attached. Tbg string, X-plug both test to 1550psi w/ 14ppg kill mud in tbg, no neg test performed due to kill mud. SI & SDON.
- 4/9/26 SICP=974psi, SITP=0psi upon arrival. Pump 14ppg Kill mud. Retrieve X-plug, TOH w/ Pkr, redress, reset X-plug. RIH with 5-1/2" x 2-7/8" AS-1X packer with On/Off tool (2.31" X-Profile in On/Off Stinger) on 105jts of original 3-1/2", 9.3#, IPC Tubing, 1ea 10', 1ea 8' 3-1/2" L80, IPC tbg subs, 1jt of original 3-1/2", 9.3#, J55, IPC tubing(Loaded tbg with fresh water 10-20stds). Set packer at 3516'KB (136' above top perf). Neg test, good. Prelim MIT to 566psi, good. Preparing to pump packer fluid at report time.
- 4/10/26 Pumped packer fluid, ND BOPE NU wellhead. RU Wellcheck & performed official MIT to 550psi, down to 540psi, good test. MIT confirmed via text by NMOCD Clarence Smith. RU Expert DH and RIH 2/ 2.34" GR and retrieved X-Plug, Est inj rate of 3.7BPM at 1350psi. Turned well over to injection plant. RD AWS #880. FINAL REPORT.

From: [Harris, Anthony, EMNRD](#)
To: [Mark Thompson](#); [Goetze, Phillip, EMNRD](#)
Cc: [Russell Mcquitty](#); [Dougi, Delilah, EMNRD](#); [Sandoval, Stacy, EMNRD](#)
Subject: RE: [EXTERNAL] Basin Disposal - Disposal #1 - Packer Depth exception request
Date: Friday, April 10, 2026 11:15:49 AM
Attachments: [image001.png](#)

Hi Mark

Since there does not appear to be any other option at this point, your packer setting depth is approved subject to the following requirements:

1. Submit a C-103Z Subsequent Report and include the following:
 - a. A summary of the workover operation and the issues faced with achieving a proper set / pressure test.
 - b. Request a packer setting depth exception based upon the final packer setting depth
 - c. A statement that a successful MIT was achieved
2. Attach a copy of this e-mail to the C-103Z
3. Attach an updated wellbore diagram to the C-103Z showing Casing size(s) and setting depths, tubing size, packer setting depth, and perforation details
4. Attach a copy of the chart for the MIT.*

OCD will then issue a formal approval of the packer setting depth exception signed by OCD Director.

***Note:** A separate Sundry submission will be required for the actual MIT since those tests are approved by our field inspectors.

Regards

Tony Harris

Petroleum Specialist

Anthony.harris@emnrd.nm.gov

505 549 8131.



From: Mark Thompson <mark@walsheng.net>

Sent: Friday, April 10, 2026 10:42 AM

To: Goetze, Phillip, EMNRD <phillip.goetze@emnrd.nm.gov>; Harris, Anthony, EMNRD

<Anthony.Harris@emnrd.nm.gov>

Cc: Russell Mcquitty <russell@walsheng.net>

Subject: [EXTERNAL] Basin Disposal - Disposal #1

Some people who received this message don't often get email from mark@walsheng.net. [Learn why this is important](#)

CAUTION: This email originated outside of our organization. Exercise caution prior to clicking on links or opening attachments.

Phil, Tony,

I'm with Walsh Engineering and we are working on the Disposal #1 (API 30-045-26862).

I talked with John at the OCD and he asked me to reach out to you guys about getting another variance approval for the setting depth of this packer on the Disposal #1. We originally asked for a 121' above perf variance. Setting the packer there we could never get a complete test after a having done multiple attempts.

We were able to obtain some pup joints and set the packer 15' higher and have a good hold and MIT Tests. So I am asking for a variance to set it at 136' higher than the perfs at 3516'. Below are some depth references.

Top Perf - 3652

Original Variance - 3531 (121')

Requested Variance - 3516 (136')

I want to reiterate we had not had any problem with the casing at the original variance depth with holding pressure. Again having done multiple pressure test at a deeper depth. There appeared to just be some issue with a packer holding. I do not believe the casing to be compromised at that depth.

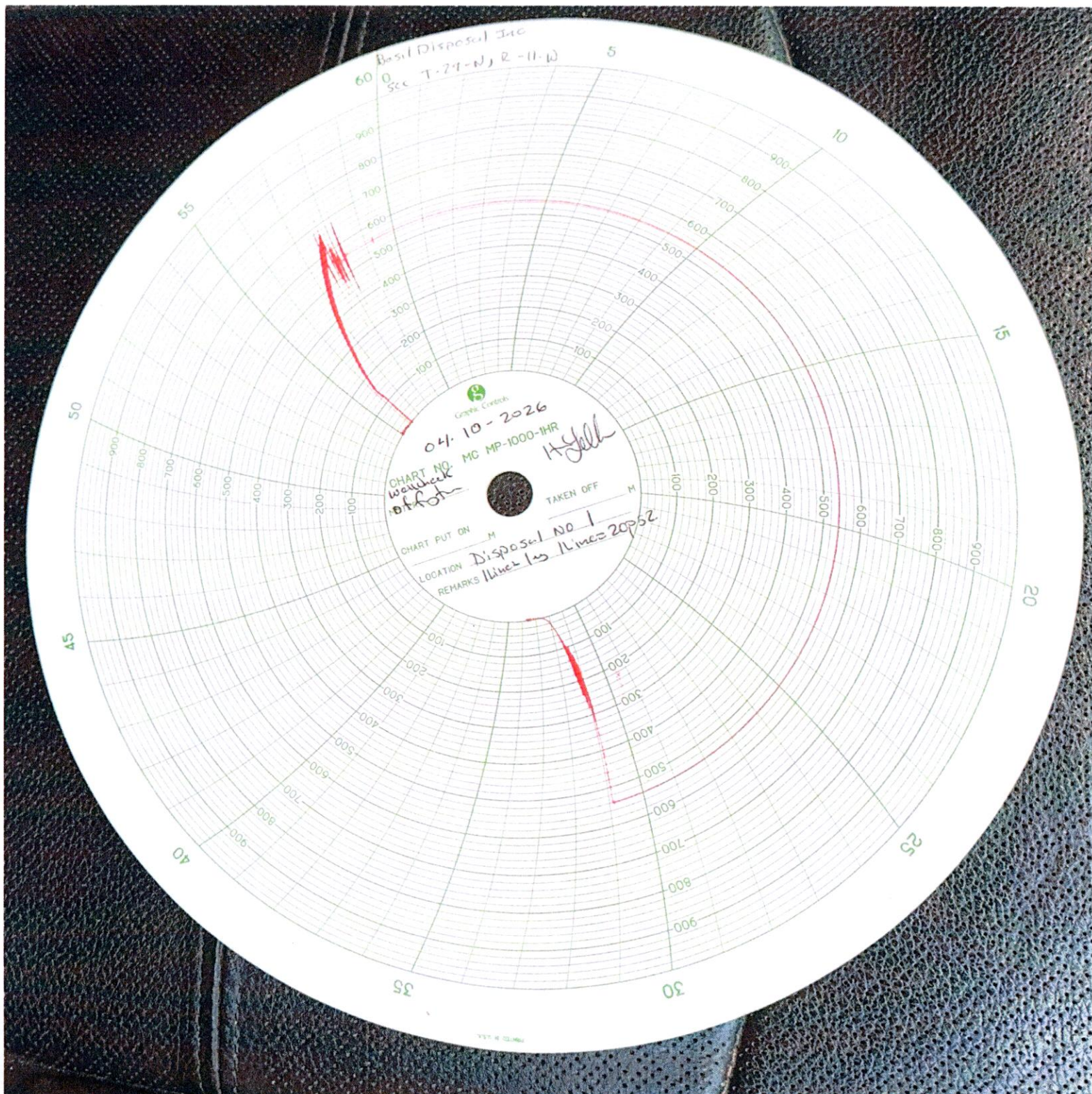
If you have any questions please give me a call. We are waiting on your response here in the field.

Thank you

Mark Thompson

575-642-5875

Get [Outlook for iOS](#)



Sante Fe Main Office
Phone: (505) 476-3441

General Information
Phone: (505) 629-6116

Online Phone Directory
<https://www.emnrd.nm.gov/ocd/contact-us>

State of New Mexico
Energy, Minerals and Natural Resources
Oil Conservation Division
1220 S. St Francis Dr.
Santa Fe, NM 87505

COMMENTS

Action 580294

COMMENTS

Operator: BASIN DISPOSAL INC P.O. Box 100 Aztec, NM 87410	OGRID: 1739
	Action Number: 580294
	Action Type: [C-103Z] Sub. General Sundry (C-103Z)

COMMENTS

Created By	Comment	Comment Date
anthony.harris	Packer Setting Depth Exception will be issued.	4/29/2026

Sante Fe Main Office
Phone: (505) 476-3441

General Information
Phone: (505) 629-6116

Online Phone Directory
<https://www.emnrd.nm.gov/ocd/contact-us>

State of New Mexico
Energy, Minerals and Natural Resources
Oil Conservation Division
1220 S. St Francis Dr.
Santa Fe, NM 87505

CONDITIONS

Action 580294

CONDITIONS

Operator: BASIN DISPOSAL INC P.O. Box 100 Aztec, NM 87410	OGRID: 1739
	Action Number: 580294
	Action Type: [C-103Z] Sub. General Sundry (C-103Z)

CONDITIONS

Created By	Condition	Condition Date
anthony.harris	None	4/29/2026