

District I  
1625 N. French Dr., Hobbs, NM 88240  
District II  
811 S. First St., Artesia, NM 88210  
District III  
1000 Rio Brazos Rd., Aztec, NM 87410  
District IV  
1220 S. St. Francis Dr., Santa Fe, NM 87505

State of New Mexico  
Energy, Minerals & Natural Resources

Form C-104  
Revised August 1, 2011

Oil Conservation Division  
1220 South St. Francis Dr.  
Santa Fe, NM 87505

Submit one copy to appropriate District Office

AMENDED REPORT

**I. REQUEST FOR ALLOWABLE AND AUTHORIZATION TO TRANSPORT**

<sup>1</sup> Operator name and Address SPUR ENERGY PARTNERS LLC 9655 KATY FREEWAY, SUITE 500 HOUSTON, TX 77024		<sup>2</sup> OGRID Number 328947
		<sup>3</sup> Reason for Filing Code/ Effective Date RT 10/26/2022
<sup>4</sup> API Number 30 - 025-50211	<sup>5</sup> Pool Name MALJAMAR; YESO, WEST	<sup>6</sup> Pool Code 44500
<sup>7</sup> Property Code 331866	<sup>8</sup> Property Name JG 16 STATE NORTH COM	<sup>9</sup> Well Number 21H

**II. <sup>10</sup> Surface Location**

Ul or lot no.	Section	Township	Range	Lot Idn	Feet from the	North/South Line	Feet from the	East/West line	County
D	16	17S	32E		1320	NORTH	80	WEST	LEA

**<sup>11</sup> Bottom Hole Location**

FTP: 1968' FNL 106' FWL LTP: 1990' FNL 122' FEL

UL or lot no.	Section	Township	Range	Lot Idn	Feet from the	North/South line	Feet from the	East/West line	County
H	16	17S	32E		1994	NORTH	55	EAST	EDDY
<sup>12</sup> Lse Code S	<sup>13</sup> Producing Method Code P	<sup>14</sup> Gas Connection Date 10/15/2022	<sup>15</sup> C-129 Permit Number	<sup>16</sup> C-129 Effective Date	<sup>17</sup> C-129 Expiration Date				

**III. Oil and Gas Transporters**

<sup>18</sup> Transporter OGRID	<sup>19</sup> Transporter Name and Address	<sup>20</sup> O/G/W
221115	FRONTIER FIELD SERVICES, LLC 4200 EAST SKELLY DRIVE, SUITE 700, TULSA, OK 74135	G
33479	HOLLYFRONTIER REFINING & MARKETING 2828 N. HARWOOD, SUITE 1300, DALLAS, TX 75201	O

**IV. Well Completion Data**

<sup>21</sup> Spud Date	<sup>22</sup> Ready Date	<sup>23</sup> TD	<sup>24</sup> PBTD	<sup>25</sup> Perforations	<sup>26</sup> DHC, MC
06/13/2022	10/26/2022	5737'V/11464'M	5737'V/11419'M	6339'-11397'	
<sup>27</sup> Hole Size	<sup>28</sup> Casing & Tubing Size	<sup>29</sup> Depth Set	<sup>30</sup> Sacks Cement		
17-1/2"	13-3/8" 54.5# J-55 BTC	950'	1095 SXS (492 TO SURFACE)		
12-1/4"	9-5/8" 36# J-55 BTC	3865'	1075 SXS (241 TO SURFACE)		
8-3/4"	7" 32# L-80 BK-HT	6118'	2040 SXS (406 TO SURFACE)		
8-3/4"	5-1/2" 20# L-80K-HT	11464'	2040 SXS (406 TO SURFACE)		
	3-1/2" J-55 TBG	6019'			

**V. Well Test Data**

<sup>31</sup> Date New Oil	<sup>32</sup> Gas Delivery Date	<sup>33</sup> Test Date	<sup>34</sup> Test Length	<sup>35</sup> Tbg. Pressure	<sup>36</sup> Csg. Pressure
<sup>37</sup> Choke Size	<sup>38</sup> Oil	<sup>39</sup> Water	<sup>40</sup> Gas	<sup>41</sup> Test Method	

<sup>42</sup> I hereby certify that the rules of the Oil Conservation Division have been complied with and that the information given above is true and complete to the best of my knowledge and belief.

Signature: *Sarah Chapman*  
Printed name: SARAH CHAPMAN  
Title: REGULATORY DIRECTOR  
E-mail Address: SCHAPMAN@SPURENERGY.COM  
Date: 10/26/2022 Phone: 832-930-8613

OIL CONSERVATION DIVISION  
Approved by:  
Title:  
Approval Date:





---

I **Larry Wright**, certify that I am employed by **Wellbenders Directional Services**. That I did on the day(s) of **07/23/22** thru **08/06/22** conduct or supervise the taking of a **MWD Survey** from a depth of **112'** to a depth of **11464'**; that the data is true, correct, complete and within the limitations of the tool as set forth by **Wellbenders Directional Services**; that I am authorized and qualified to make this report; that this survey was conducted at the request of **Spur Energy Partners** for the **JG 16 State North Com 21H** API No. **30-025-50211** in **Lea County, New Mexico**; and that I have reviewed this report and find that it conforms to the principles and procedures as set forth by **Wellbenders Directional Services**.

Larry Wright

---

*1125 Beach Airport Rd, Conroe, Texas  
77301  
PH 936-756-3225 FAX 936-756-3248*



# Spur Energy Partners, LLC

Lea County, NM (Nad-83/ NME)

JG 16 STATE NORTH COM

21H

OH

Design: Wellbore #1

## Standard Survey Report

08 August, 2022





Survey Report



<b>Company:</b>	Spur Energy Partners, LLC	<b>Local Co-ordinate Reference:</b>	Well 21H
<b>Project:</b>	Lea County, NM (Nad-83/ NME)	<b>TVD Reference:</b>	RKB = 20' @ 4058.00usft (AKITA 57)
<b>Site:</b>	JG 16 STATE NORTH COM	<b>MD Reference:</b>	RKB = 20' @ 4058.00usft (AKITA 57)
<b>Well:</b>	21H	<b>North Reference:</b>	Grid
<b>Wellbore:</b>	OH	<b>Survey Calculation Method:</b>	Minimum Curvature
<b>Design:</b>	Wellbore #1	<b>Database:</b>	WBDS_SQL_2

<b>Project</b>	Lea County, NM (Nad-83/ NME)		
<b>Map System:</b>	US State Plane 1983	<b>System Datum:</b>	Mean Sea Level
<b>Geo Datum:</b>	North American Datum 1983		
<b>Map Zone:</b>	New Mexico Eastern Zone		

<b>Site</b>	JG 16 STATE NORTH COM				
<b>Site Position:</b>		<b>Northing:</b>	669,185.10 usft	<b>Latitude:</b>	32.838391
<b>From:</b>	Map	<b>Easting:</b>	711,352.20 usft	<b>Longitude:</b>	-103.779785
<b>Position Uncertainty:</b>	0.00 usft	<b>Slot Radius:</b>	13.200 in	<b>Grid Convergence:</b>	0.300 °

<b>Well</b>	21H					
<b>Well Position</b>	<b>+N/-S</b>	0.00 usft	<b>Northing:</b>	669,145.20 usft	<b>Latitude:</b>	32.838282
	<b>+E/-W</b>	0.00 usft	<b>Easting:</b>	711,352.50 usft	<b>Longitude:</b>	-103.779785
<b>Position Uncertainty</b>		0.00 usft	<b>Wellhead Elevation:</b>	usft	<b>Ground Level:</b>	4,038.00 usft

<b>Wellbore</b>	OH				
<b>Magnetics</b>	<b>Model Name</b>	<b>Sample Date</b>	<b>Declination (°)</b>	<b>Dip Angle (°)</b>	<b>Field Strength (nT)</b>
	IGRF2020	06/01/22	6.578	60.394	47,730.28728988

<b>Design</b>	Wellbore #1				
<b>Audit Notes:</b>					
<b>Version:</b>	1.0	<b>Phase:</b>	ACTUAL	<b>Tie On Depth:</b>	0.00
<b>Vertical Section:</b>	<b>Depth From (TVD) (usft)</b>	<b>+N/-S (usft)</b>	<b>+E/-W (usft)</b>	<b>Direction (°)</b>	
	0.00	0.00	0.00	89.83	

<b>Survey Program</b>	<b>Date</b>	08/08/22			
<b>From (usft)</b>	<b>To (usft)</b>	<b>Survey (Wellbore)</b>	<b>Tool Name</b>	<b>Description</b>	
112.00	900.00	SPUDDER (OH)	MWD+IGRF	OWSG MWD + IGRF or WMM	
900.00	11,464.00	Survey #2 (OH)	MWD+IFR1+SAG+FDIR	OWSG MWD + IFR1 + Sag + FDIR Correction	

<b>Survey</b>										
<b>Measured Depth (usft)</b>	<b>Inclination (°)</b>	<b>Azimuth (°)</b>	<b>Vertical Depth (usft)</b>	<b>+N/-S (usft)</b>	<b>+E/-W (usft)</b>	<b>Vertical Section (usft)</b>	<b>Dogleg Rate (°/100ft)</b>	<b>Build Rate (°/100ft)</b>	<b>Turn Rate (°/100ft)</b>	
0.00	0.00	0.00	0.00	0.00	0.00	0.00	0.00	0.00	0.00	0.00
<b>1. SHL 21H: 1320' FNL, 80' FWL</b>										
112.00	0.22	205.00	112.00	-0.19	-0.09	-0.09	0.20	0.20	0.00	0.00
174.00	0.22	165.01	174.00	-0.42	-0.11	-0.11	0.24	0.00	-64.50	
234.00	0.48	200.96	234.00	-0.76	-0.17	-0.17	0.55	0.43	59.92	
296.00	0.31	220.29	296.00	-1.13	-0.37	-0.38	0.34	-0.27	31.18	
384.00	1.41	223.37	383.99	-2.10	-1.27	-1.28	1.25	1.25	3.50	
470.00	3.91	233.39	469.89	-4.62	-4.35	-4.36	2.95	2.91	11.65	
557.00	6.02	235.85	556.56	-8.95	-10.51	-10.53	2.44	2.43	2.83	
643.00	6.29	236.20	642.06	-14.10	-18.15	-18.20	0.32	0.31	0.41	



Survey Report



<b>Company:</b>	Spur Energy Partners, LLC	<b>Local Co-ordinate Reference:</b>	Well 21H
<b>Project:</b>	Lea County, NM (Nad-83/ NME)	<b>TVD Reference:</b>	RKB = 20' @ 4058.00usft (AKITA 57)
<b>Site:</b>	JG 16 STATE NORTH COM	<b>MD Reference:</b>	RKB = 20' @ 4058.00usft (AKITA 57)
<b>Well:</b>	21H	<b>North Reference:</b>	Grid
<b>Wellbore:</b>	OH	<b>Survey Calculation Method:</b>	Minimum Curvature
<b>Design:</b>	Wellbore #1	<b>Database:</b>	WBDS_SQL_2

Survey										
Measured Depth (usft)	Inclination (°)	Azimuth (°)	Vertical Depth (usft)	+N/-S (usft)	+E/-W (usft)	Vertical Section (usft)	Dogleg Rate (°/100ft)	Build Rate (°/100ft)	Turn Rate (°/100ft)	
732.00	6.68	234.80	730.49	-19.80	-26.44	-26.49	0.47	0.44	-1.57	
820.00	8.00	237.70	817.77	-26.02	-35.79	-35.87	1.56	1.50	3.30	
900.00	8.31	238.31	896.96	-32.03	-45.42	-45.51	0.40	0.39	0.76	
1,008.00	7.78	237.54	1,003.89	-40.06	-58.23	-58.35	0.50	-0.49	-0.71	
1,128.00	10.05	238.77	1,122.44	-49.85	-74.04	-74.18	1.90	1.89	1.02	
1,247.00	13.96	236.85	1,238.81	-63.08	-94.94	-95.13	3.30	3.29	-1.61	
1,372.00	16.21	236.11	1,359.50	-81.06	-122.05	-122.29	1.81	1.80	-0.59	
1,497.00	14.73	233.64	1,479.97	-100.21	-149.33	-149.63	1.30	-1.18	-1.98	
1,622.00	14.40	231.30	1,600.95	-119.35	-174.26	-174.62	0.54	-0.26	-1.87	
1,748.00	14.08	232.02	1,723.08	-138.58	-198.57	-198.98	0.29	-0.25	0.57	
1,874.00	13.87	233.91	1,845.35	-156.91	-222.86	-223.32	0.40	-0.17	1.50	
1,999.00	14.53	233.05	1,966.53	-175.16	-247.49	-248.01	0.55	0.53	-0.69	
2,124.00	14.51	232.48	2,087.54	-194.12	-272.45	-273.02	0.12	-0.02	-0.46	
2,248.00	13.74	232.78	2,207.79	-212.49	-296.49	-297.12	0.62	-0.62	0.24	
2,373.00	13.34	235.64	2,329.31	-229.61	-320.22	-320.90	0.62	-0.32	2.29	
2,500.00	13.43	235.63	2,452.87	-246.20	-344.49	-345.22	0.07	0.07	-0.01	
2,625.00	14.52	231.58	2,574.17	-264.14	-368.75	-369.53	1.17	0.87	-3.24	
2,750.00	14.97	231.68	2,695.05	-283.89	-393.69	-394.53	0.36	0.36	0.08	
2,875.00	15.69	234.60	2,815.60	-303.69	-420.14	-421.03	0.84	0.58	2.34	
3,002.00	14.70	236.76	2,938.16	-322.47	-447.61	-448.57	0.90	-0.78	1.70	
3,126.00	14.77	236.19	3,058.08	-339.89	-473.90	-474.91	0.13	0.06	-0.46	
3,251.00	16.05	236.20	3,178.59	-358.37	-501.50	-502.56	1.02	1.02	0.01	
3,376.00	15.80	236.34	3,298.79	-377.41	-530.03	-531.14	0.20	-0.20	0.11	
3,500.00	14.08	236.76	3,418.59	-395.04	-556.69	-557.86	1.39	-1.39	0.34	
3,624.00	13.57	236.85	3,539.00	-411.26	-581.49	-582.71	0.41	-0.41	0.07	
3,749.00	14.43	234.71	3,660.29	-428.28	-606.48	-607.75	0.80	0.69	-1.71	
3,806.00	15.23	234.43	3,715.39	-436.74	-618.37	-619.66	1.41	1.40	-0.49	
3,950.00	14.63	234.28	3,854.53	-458.36	-648.52	-649.87	0.42	-0.42	-0.10	
4,077.00	13.75	232.74	3,977.65	-476.86	-673.55	-674.96	0.75	-0.69	-1.21	
4,202.00	14.27	231.56	4,098.93	-495.43	-697.44	-698.91	0.47	0.42	-0.94	
4,328.00	15.59	235.02	4,220.68	-514.79	-723.48	-725.00	1.26	1.05	2.75	
4,453.00	16.66	238.86	4,340.76	-533.69	-752.58	-754.16	1.21	0.86	3.07	
4,581.00	16.16	238.63	4,463.55	-552.45	-783.49	-785.13	0.39	-0.39	-0.18	
4,707.00	14.01	233.78	4,585.21	-570.59	-810.77	-812.46	1.98	-1.71	-3.85	
4,769.00	13.79	233.41	4,645.39	-579.43	-822.76	-824.48	0.38	-0.35	-0.60	
4,794.85	12.36	229.24	4,670.57	-583.07	-827.33	-829.06	6.63	-5.54	-16.14	
<b>2. KOP 21H @ 4793.99' MD</b>										
4,832.00	10.45	221.34	4,706.99	-588.20	-832.57	-834.31	6.63	-5.14	-21.26	
4,895.00	8.18	197.11	4,769.17	-596.78	-837.66	-839.43	7.11	-3.60	-38.46	
4,957.00	10.03	174.17	4,830.41	-606.37	-838.41	-840.21	6.51	2.98	-37.00	
5,020.00	11.10	156.34	4,892.36	-617.38	-835.42	-837.25	5.43	1.70	-28.30	
5,083.00	10.48	137.28	4,954.26	-627.15	-829.10	-830.95	5.72	-0.98	-30.25	
5,145.00	13.05	117.75	5,014.98	-634.56	-819.07	-820.95	7.59	4.15	-31.50	



Survey Report



<b>Company:</b>	Spur Energy Partners, LLC	<b>Local Co-ordinate Reference:</b>	Well 21H
<b>Project:</b>	Lea County, NM (Nad-83/ NME)	<b>TVD Reference:</b>	RKB = 20' @ 4058.00usft (AKITA 57)
<b>Site:</b>	JG 16 STATE NORTH COM	<b>MD Reference:</b>	RKB = 20' @ 4058.00usft (AKITA 57)
<b>Well:</b>	21H	<b>North Reference:</b>	Grid
<b>Wellbore:</b>	OH	<b>Survey Calculation Method:</b>	Minimum Curvature
<b>Design:</b>	Wellbore #1	<b>Database:</b>	WBDS_SQL_2

Survey										
Measured Depth (usft)	Inclination (°)	Azimuth (°)	Vertical Depth (usft)	+N/-S (usft)	+E/-W (usft)	Vertical Section (usft)	Dogleg Rate (°/100ft)	Build Rate (°/100ft)	Turn Rate (°/100ft)	
5,208.00	16.74	103.12	5,075.87	-639.93	-803.93	-805.83	8.32	5.86	-23.22	
5,271.00	19.86	95.01	5,135.69	-642.93	-784.43	-786.33	6.38	4.95	-12.87	
5,334.00	24.05	87.91	5,194.12	-643.39	-760.92	-762.83	7.86	6.65	-11.27	
5,396.00	28.22	87.14	5,249.77	-642.20	-733.64	-735.55	6.75	6.73	-1.24	
5,459.00	32.68	88.09	5,304.07	-640.89	-701.75	-703.65	7.12	7.08	1.51	
5,521.00	37.77	89.82	5,354.70	-640.27	-666.01	-667.91	8.37	8.21	2.79	
5,583.00	43.14	89.81	5,401.86	-640.14	-625.80	-627.70	8.66	8.66	-0.02	
5,647.00	47.83	90.20	5,446.71	-640.15	-580.18	-582.07	7.34	7.33	0.61	
5,709.00	52.10	90.99	5,486.59	-640.66	-532.72	-534.62	6.96	6.89	1.27	
5,771.00	56.97	92.20	5,522.55	-642.08	-482.26	-484.16	8.01	7.85	1.95	
5,834.00	61.47	93.09	5,554.78	-644.58	-428.21	-430.12	7.25	7.14	1.41	
<b>START TANGENT: 5834.00' MD/ 5554.77' TVD</b>										
5,865.00	61.33	93.05	5,569.62	-646.04	-401.03	-402.94	0.47	-0.45	-0.13	
5,897.00	60.79	92.96	5,585.11	-647.51	-373.06	-374.98	1.71	-1.69	-0.28	
5,928.00	60.28	92.88	5,600.36	-648.89	-346.11	-348.03	1.66	-1.65	-0.26	
5,959.00	59.95	92.74	5,615.80	-650.20	-319.26	-321.19	1.13	-1.06	-0.45	
5,989.00	59.17	92.79	5,631.00	-651.45	-293.43	-295.36	2.60	-2.60	0.17	
6,019.00	59.38	92.80	5,646.33	-652.71	-267.67	-269.60	0.70	0.70	0.03	
<b>END TANGENT: 6019.00' MD/ 5646.32' TVD</b>										
6,080.00	60.99	91.44	5,676.66	-654.66	-214.78	-216.72	3.27	2.64	-2.23	
6,138.00	65.99	88.84	5,702.54	-654.76	-162.90	-164.85	9.51	8.62	-4.48	
6,164.00	67.56	87.88	5,712.79	-654.08	-139.02	-140.96	6.93	6.04	-3.69	
6,225.00	71.51	87.76	5,734.12	-651.90	-81.92	-83.86	6.48	6.48	-0.20	
6,285.00	80.02	88.20	5,748.86	-649.86	-23.86	-25.78	14.20	14.18	0.73	
6,328.72	83.85	88.26	5,754.99	-648.52	19.41	17.48	8.76	8.76	0.14	
<b>3. FTP 21H: 1980' FNL, 100' FWL</b>										
6,333.17	84.24	88.27	5,755.45	-648.39	23.83	21.90	8.76	8.76	0.13	
<b>FINAL FTP: 6333.17' MD</b>										
6,344.00	85.19	88.28	5,756.45	-648.06	34.61	32.68	8.76	8.76	0.13	
6,406.00	88.25	88.96	5,760.00	-646.57	96.48	94.56	5.06	4.94	1.10	
6,527.00	91.76	90.37	5,759.99	-645.87	217.45	215.54	3.13	2.90	1.17	
6,646.00	90.58	91.03	5,757.56	-647.32	336.42	334.50	1.14	-0.99	0.55	
6,768.00	91.42	91.51	5,755.43	-650.02	458.37	456.44	0.79	0.69	0.39	
6,893.00	93.87	90.81	5,749.66	-652.55	583.20	581.26	2.04	1.96	-0.56	
7,018.00	93.22	90.71	5,741.93	-654.21	707.95	706.00	0.53	-0.52	-0.08	
7,145.00	92.49	91.31	5,735.60	-656.44	834.77	832.82	0.74	-0.57	0.47	
7,271.00	92.21	90.72	5,730.44	-658.67	960.64	958.68	0.52	-0.22	-0.47	
7,397.00	90.55	91.09	5,727.40	-660.66	1,086.59	1,084.62	1.35	-1.32	0.29	
7,522.00	92.07	90.26	5,724.55	-662.13	1,211.54	1,209.57	1.39	1.22	-0.66	
7,652.00	96.18	88.02	5,715.19	-660.20	1,341.15	1,339.19	3.60	3.16	-1.72	
7,778.00	92.64	88.65	5,705.51	-656.55	1,466.71	1,464.75	2.85	-2.81	0.50	
7,904.00	90.14	89.62	5,702.45	-654.65	1,592.64	1,590.69	2.13	-1.98	0.77	
7,984.00	90.71	89.33	5,701.86	-653.91	1,672.64	1,670.69	0.80	0.71	-0.36	
8,047.00	91.19	89.42	5,700.81	-653.23	1,735.62	1,733.68	0.78	0.76	0.14	



Survey Report



<b>Company:</b>	Spur Energy Partners, LLC	<b>Local Co-ordinate Reference:</b>	Well 21H
<b>Project:</b>	Lea County, NM (Nad-83/ NME)	<b>TVD Reference:</b>	RKB = 20' @ 4058.00usft (AKITA 57)
<b>Site:</b>	JG 16 STATE NORTH COM	<b>MD Reference:</b>	RKB = 20' @ 4058.00usft (AKITA 57)
<b>Well:</b>	21H	<b>North Reference:</b>	Grid
<b>Wellbore:</b>	OH	<b>Survey Calculation Method:</b>	Minimum Curvature
<b>Design:</b>	Wellbore #1	<b>Database:</b>	WBDS_SQL_2

Survey										
Measured Depth (usft)	Inclination (°)	Azimuth (°)	Vertical Depth (usft)	+N/-S (usft)	+E/-W (usft)	Vertical Section (usft)	Dogleg Rate (°/100ft)	Build Rate (°/100ft)	Turn Rate (°/100ft)	
8,110.00	92.09	89.40	5,699.01	-652.58	1,798.59	1,796.65	1.43	1.43	-0.03	
8,235.00	90.26	90.62	5,696.45	-652.60	1,923.56	1,921.62	1.76	-1.46	0.98	
8,361.00	87.80	91.84	5,698.58	-655.30	2,049.50	2,047.55	2.18	-1.95	0.97	
8,487.00	86.03	91.31	5,705.36	-658.76	2,175.27	2,173.30	1.47	-1.40	-0.42	
8,612.00	87.24	92.17	5,712.70	-662.55	2,299.99	2,298.01	1.19	0.97	0.69	
8,737.00	86.59	92.24	5,719.42	-667.35	2,424.72	2,422.72	0.52	-0.52	0.06	
8,862.00	85.92	90.82	5,727.59	-670.68	2,549.40	2,547.40	1.25	-0.54	-1.14	
8,987.00	86.51	91.17	5,735.84	-672.85	2,674.11	2,672.10	0.55	0.47	0.28	
9,113.00	87.91	89.90	5,741.97	-674.02	2,799.95	2,797.93	1.50	1.11	-1.01	
9,238.00	89.42	90.05	5,744.89	-673.97	2,924.91	2,922.90	1.21	1.21	0.12	
9,365.00	90.68	88.14	5,744.78	-671.96	3,051.89	3,049.88	1.80	0.99	-1.50	
9,492.00	91.67	88.38	5,742.17	-668.11	3,178.80	3,176.80	0.80	0.78	0.19	
9,618.00	90.71	90.36	5,739.55	-666.72	3,304.76	3,302.76	1.75	-0.76	1.57	
9,744.00	88.83	89.65	5,740.06	-666.74	3,430.75	3,428.75	1.59	-1.49	-0.56	
9,871.00	89.34	90.11	5,742.09	-666.47	3,557.73	3,555.74	0.54	0.40	0.36	
9,997.00	89.76	89.59	5,743.08	-666.14	3,683.73	3,681.73	0.53	0.33	-0.41	
10,122.00	89.84	88.39	5,743.51	-663.94	3,808.70	3,806.72	0.96	0.06	-0.96	
10,247.00	87.23	88.02	5,746.71	-660.02	3,933.59	3,931.61	2.11	-2.09	-0.30	
10,373.00	87.94	88.03	5,752.02	-655.68	4,059.40	4,057.44	0.56	0.56	0.01	
10,498.00	89.59	87.35	5,754.71	-650.65	4,184.27	4,182.32	1.43	1.32	-0.54	
10,623.00	90.80	87.22	5,754.29	-644.73	4,309.12	4,307.19	0.97	0.97	-0.10	
10,749.00	92.09	88.18	5,751.11	-639.67	4,434.98	4,433.06	1.28	1.02	0.76	
10,874.00	90.99	89.71	5,747.75	-637.37	4,559.91	4,558.00	1.51	-0.88	1.22	
11,002.00	89.62	91.57	5,747.07	-638.80	4,687.89	4,685.97	1.80	-1.07	1.45	
11,128.00	90.18	91.97	5,747.29	-642.69	4,813.83	4,811.90	0.55	0.44	0.32	
11,254.00	91.33	92.53	5,745.63	-647.64	4,939.72	4,937.77	1.02	0.91	0.44	
11,399.00	92.87	93.32	5,740.32	-655.03	5,084.42	5,082.46	1.19	1.06	0.54	
11,416.63	92.87	93.32	5,739.43	-656.05	5,102.00	5,100.03	0.00	0.00	0.00	
<b>4. LTP 21H: 1980' FNL, 100' FEL</b>										
11,418.53	92.87	93.32	5,739.34	-656.16	5,103.90	5,101.93	0.00	0.00	0.00	
<b>FINAL LTP: 11418.53' MD</b>										
11,464.00	92.87	93.32	5,737.06	-658.79	5,149.23	5,147.26	0.00	0.00	0.00	
<b>Projection to Bit: 11464.00' MD/ 5737.06' TVD - Final Station Closure Distance= 5191.21 /Direction= 97.29 - TD: Latitude:</b>										



Survey Report



<b>Company:</b>	Spur Energy Partners, LLC	<b>Local Co-ordinate Reference:</b>	Well 21H
<b>Project:</b>	Lea County, NM (Nad-83/ NME)	<b>TVD Reference:</b>	RKB = 20' @ 4058.00usft (AKITA 57)
<b>Site:</b>	JG 16 STATE NORTH COM	<b>MD Reference:</b>	RKB = 20' @ 4058.00usft (AKITA 57)
<b>Well:</b>	21H	<b>North Reference:</b>	Grid
<b>Wellbore:</b>	OH	<b>Survey Calculation Method:</b>	Minimum Curvature
<b>Design:</b>	Wellbore #1	<b>Database:</b>	WBDS_SQL_2

Design Targets									
Target Name - hit/miss target - Shape	Dip Angle (°)	Dip Dir. (°)	TVD (usft)	+N/-S (usft)	+E/-W (usft)	Northing (usft)	Easting (usft)	Latitude	Longitude
FINAL BIT PROJ/TD: - actual wellpath hits target center - Point	0.00	0.00	5,737.06	-658.79	5,149.23	668,486.41	716,501.73	32.836396	-103.763032
FINAL LTP: 1991' FNI - actual wellpath hits target center - Point	0.00	0.00	5,739.34	-656.16	5,103.90	668,489.04	716,456.40	32.836404	-103.763180
FINAL FTP: 1968' FNI - actual wellpath hits target center - Point	0.00	0.00	5,755.45	-648.39	23.83	668,496.82	711,376.33	32.836499	-103.779719

Design Annotations					
Measured Depth (usft)	Vertical Depth (usft)	Local Coordinates		Comment	
		+N/-S (usft)	+E/-W (usft)		
5,834.00	5,554.78	-644.58	-428.21	START TANGENT: 5834.00' MD/ 5554.77' TVD	
6,019.00	5,646.33	-652.71	-267.67	END TANGENT: 6019.00' MD/ 5646.32' TVD	
6,333.17	5,755.45	-648.39	23.83	FINAL FTP: 6333.17' MD	
11,418.53	5,739.34	-656.16	5,103.90	FINAL LTP: 11418.53' MD	
11,464.00	5,737.06	-658.79	5,149.23	Projection to Bit: 11464.00' MD/ 5737.06' TVD	
11,464.00	5,737.06	-658.79	5,149.23	Final Station Closure Distance= 5191.21 /Direction= 97.29	
11,464.00	5,737.06	-658.79	5,149.23	TD: Latitude= 32.836396 / Longitude= -103.763032	
11,464.00	5,737.06	-658.79	5,149.23	TD: Y= 668486.41 / X= 716501.73	

Checked By: _____	Approved By: _____	Date: _____
-------------------	--------------------	-------------



Company: Spur Energy Partners, LLC  
 Project: Lea County, NM (Nad-83/ NME)  
 Site: JG 16 STATE NORTH COM  
 Well: 21H  
 Wellbore: OH  
 Rig: AKITA 57  
 Design: PLAN #2 / 9:57, August 08 2022

WELL DETAILS: 21H

RKB = 20' @ 4058.00usft (AKITA 57)

	4038.00
+N/-S	0.00
+E/-W	0.00
Northing	669145.20
Easting	711352.50
Latitude	32.838281
Longitude	-103.779785

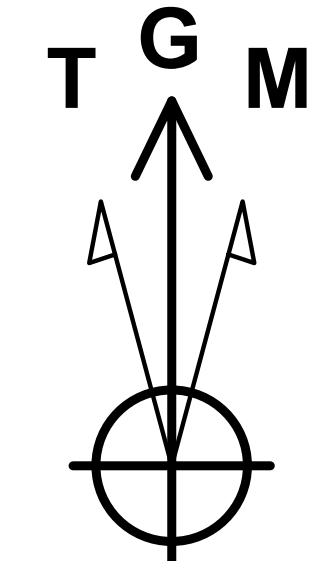
SECTION DETAILS

Sec	MD	Inc	Azi	TVD	+N/-S	+E/-W	Dleg	TFace	Vsect	Target
1	900.00	8.31	238.31	896.96	-32.03	-45.42	0.00	0.000	-45.51	
2	1000.00	8.31	238.31	995.91	-39.63	-57.72	0.00	0.000	-57.83	
3	1314.00	14.56	234.96	1303.52	-74.24	-109.38	2.00	-7.719	-109.60	
4	4793.99	14.56	234.96	4671.80	-576.46	-825.53	0.00	0.000	-827.23	
5	5825.70	60.00	89.83	5548.26	-661.12	-431.31	7.00	-148.666	-433.27	
6	6025.70	60.00	89.83	5648.26	-660.62	-258.11	0.00	0.000	-260.07	
7	6321.23	89.55	89.83	5725.00	-659.80	23.90	10.00	0.000	21.94	
8	11401.41	89.55	89.83	5764.61	-645.04	5103.90	0.00	0.000	5101.96	
9	11451.31	89.55	89.83	5765.00	-644.90	5153.80	0.00	0.000	5151.86	

- 1. SHL 21H: 1320' FNL, 80' FWL
- 2. KOP 21H @ 4793.99' MD
- 3. FTP 21H: 1980' FNL, 100' FWL
- 4. LTP 21H: 1980' FNL, 100' FEL
- 5. BHL 21H: 1980' FNL, 50' FEL

DESIGN TARGET DETAILS

Name	TVD	+N/-S	+E/-W	Northing	Easting	Latitude	Longitude
1. SHL 21H: 1320' FNL, 80' FWL	0.00	0.00	0.00	669145.20	711352.50	32.838281	-103.779785
2. KOP 21H @ 4793.99' MD	4671.80	-576.46	-825.53	668568.74	710526.97	32.836709	-103.782482
3. FTP 21H: 1980' FNL, 100' FWL	5725.00	-659.80	23.90	668485.40	711376.40	32.836468	-103.779718
4. LTP 21H: 1980' FNL, 100' FEL	5764.64	-645.10	5103.90	668500.10	716456.40	32.836434	-103.763179
5. BHL 21H: 1980' FNL, 50' FEL	5765.00	-644.90	5153.80	668500.30	716506.30	32.836434	-103.763017



Azimuths to Grid North  
 True North: -0.30°  
 Magnetic North: 6.28°  
 Magnetic Field  
 Strength: 47730.3snT  
 Dip Angle: 60.39°  
 Date: 06/01/2022  
 Model: IGRF2020

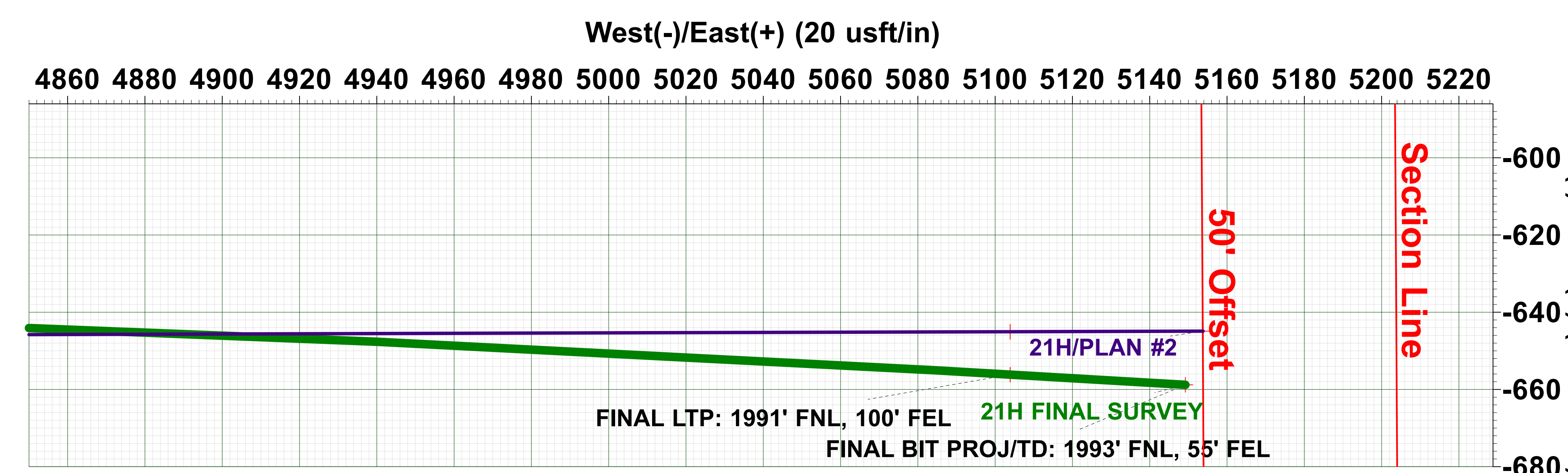
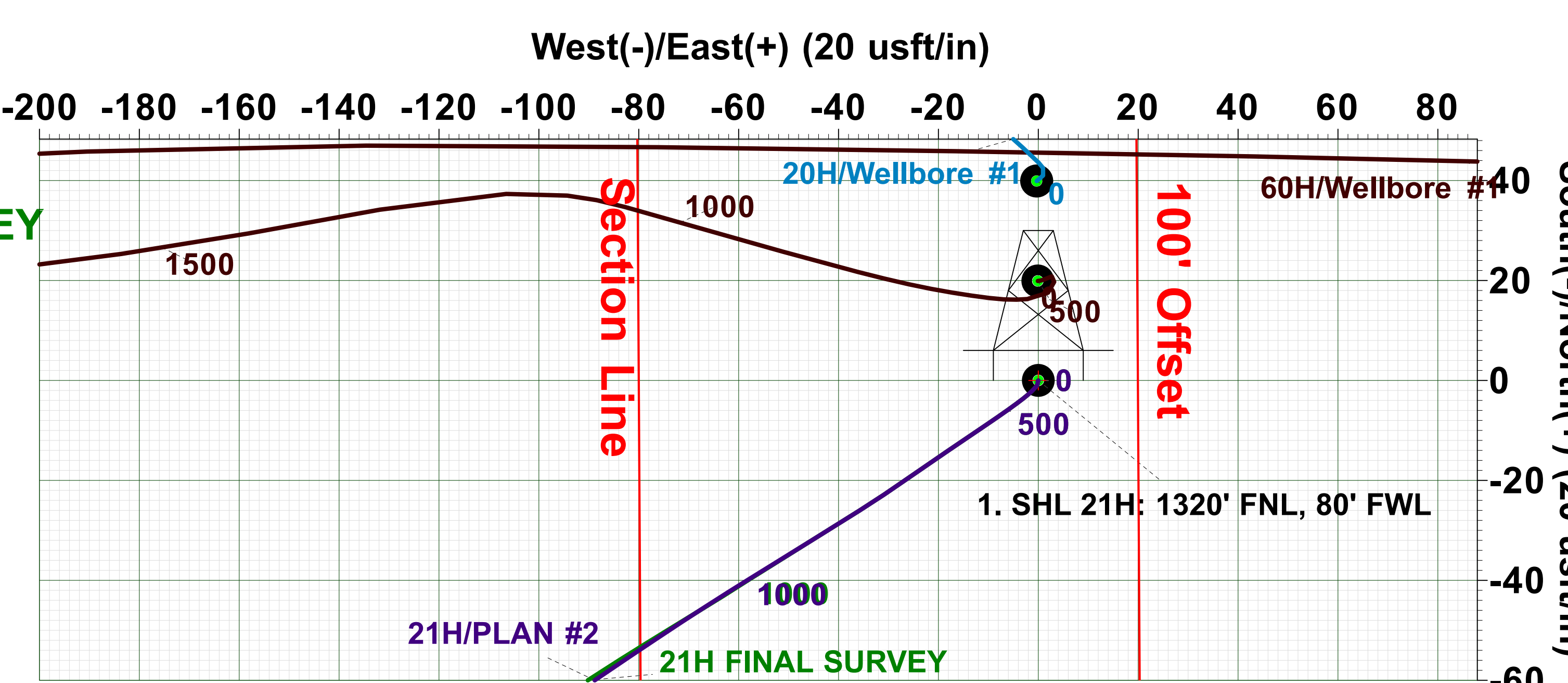
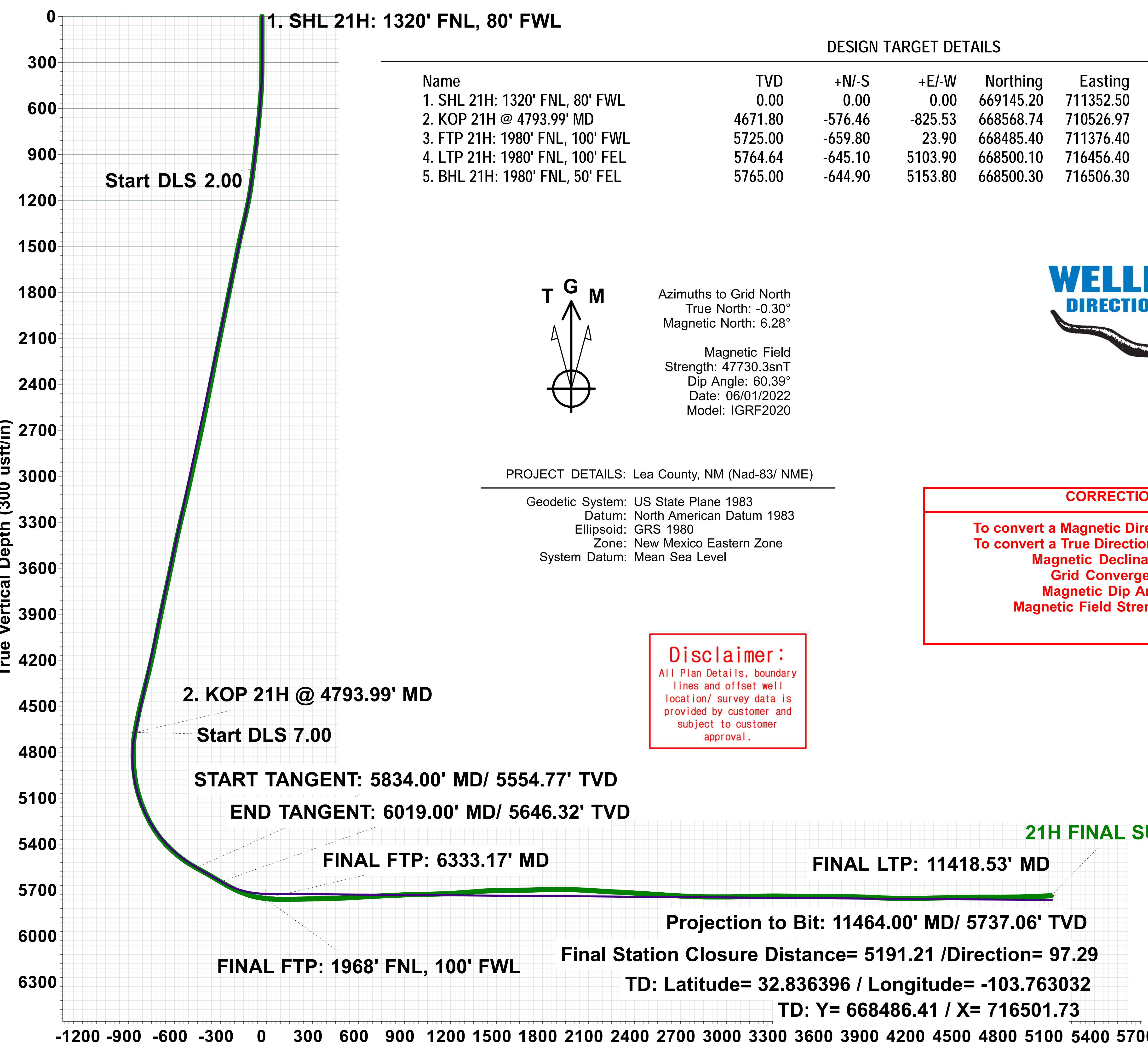
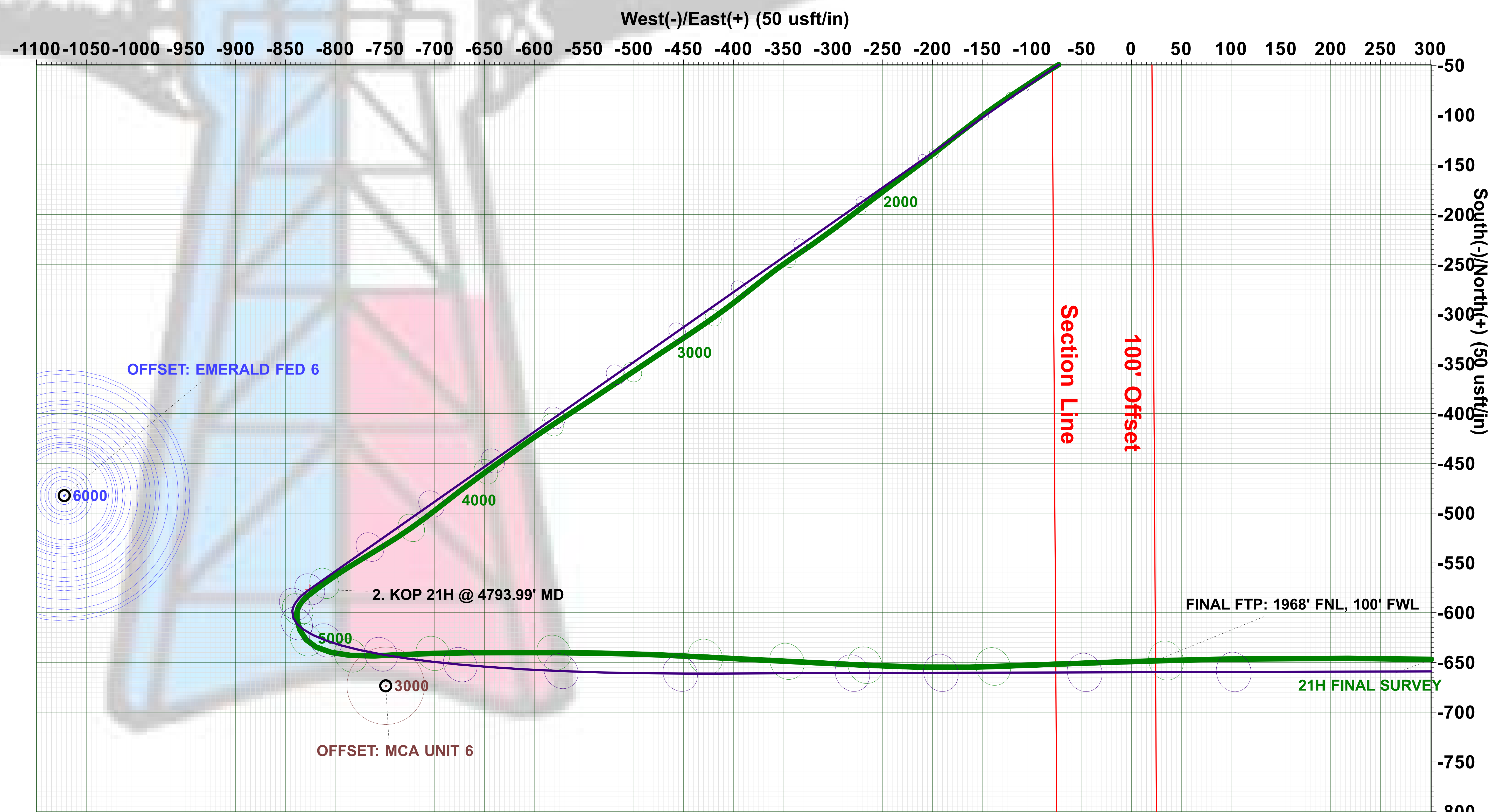
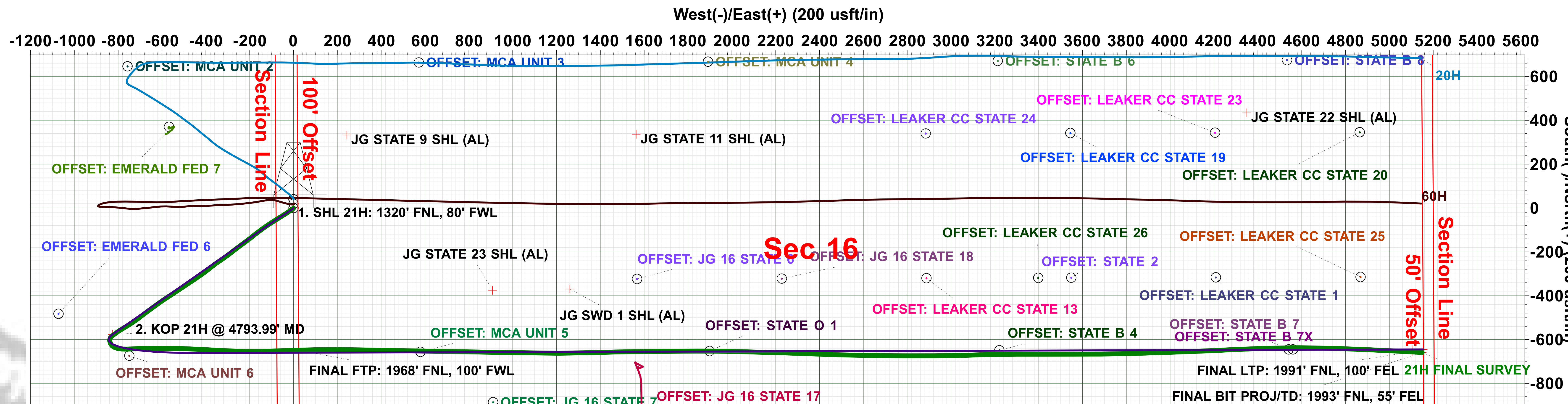
PROJECT DETAILS: Lea County, NM (Nad-83/ NME)  
 Geodetic System: US State Plane 1983  
 Datum: North American Datum 1983  
 Ellipsoid: GRS 1980  
 Zone: New Mexico Eastern Zone  
 System Datum: Mean Sea Level

**Disclaimer:**  
 All Plan Details, boundary lines and offset well location/ survey data is provided by customer and subject to customer approval.



CORRECTION REFERENCE DATA:

To convert a Magnetic Direction to a Grid Direction, Add 6.278°  
 To convert a True Direction to a Grid Direction, Subtract 0.300°  
 Magnetic Declination: 6.578°  
 Grid Convergence: 0.300° West  
 Magnetic Dip Angle: 60.394°  
 Magnetic Field Strength: 47730.28728988nT



Intent  As Drilled

API #			
Operator Name:		Property Name:	Well Number

Kick Off Point (KOP)

UL	Section	Township	Range	Lot	Feet	From N/S	Feet	From E/W	County
Latitude					Longitude				NAD

First Take Point (FTP)

UL	Section	Township	Range	Lot	Feet	From N/S	Feet	From E/W	County
Latitude					Longitude				NAD

Last Take Point (LTP)

UL	Section	Township	Range	Lot	Feet	From N/S	Feet	From E/W	County
Latitude					Longitude				NAD

Is this well the defining well for the Horizontal Spacing Unit?

Is this well an infill well?

If infill is yes please provide API if available, Operator Name and well number for Defining well for Horizontal Spacing Unit.

API #			
Operator Name:		Property Name:	Well Number

KZ 06/29/2018

U.S. Department of the Interior  
BUREAU OF LAND MANAGEMENT

<b>Well Name:</b> JG 16 STATE NORTH COM	<b>Well Location:</b> T17S / R32E / SEC 16 / NWNW /	<b>County or Parish/State:</b> /
<b>Well Number:</b> 21H	<b>Type of Well:</b> OIL WELL	<b>Allottee or Tribe Name:</b>
<b>Lease Number:</b> NMLC0060329	<b>Unit or CA Name:</b>	<b>Unit or CA Number:</b>
<b>US Well Number:</b> 3002550211	<b>Well Status:</b> Drilling Well	<b>Operator:</b> SPUR ENERGY PARTNERS LLC

**Subsequent Report**

**Sundry ID:** 2699778

**Type of Submission:** Subsequent Report

**Type of Action:** Workover Operations

**Date Sundry Submitted:** 10/26/2022

**Time Sundry Submitted:** 08:58

**Date Operation Actually Began:** 10/25/2022

**Actual Procedure:** RIH w/ 3-1/2" J-55 tbg @ 6019'.

**Operator**

*I certify that the foregoing is true and correct. Title 18 U.S.C. Section 1001 and Title 43 U.S.C. Section 1212, make it a crime for any person knowingly and willfully to make to any department or agency of the United States any false, fictitious or fraudulent statements or representations as to any matter within its jurisdiction. Electronic submission of Sundry Notices through this system satisfies regulations requiring a*

**Operator Electronic Signature:** SARAH CHAPMAN

**Signed on:** OCT 26, 2022 08:57 AM

**Name:** SPUR ENERGY PARTNERS LLC

**Title:** Regulatory Directory

**Street Address:** 9655 KATY FREEWAY, SUITE 500

**City:** Houston **State:** TX

**Phone:** (832) 930-8613

**Email address:** SCHAPMAN@SPUREPLLC.COM

**Field**

**Representative Name:**

**Street Address:**

**City:** **State:** **Zip:**

**Phone:**

**Email address:**

**Well Name:** JG 16 STATE NORTH  
COM

**Well Location:** T17S / R32E / SEC 16 /  
NWNW /

**County or Parish/State:** /

**Well Number:** 21H

**Type of Well:** OIL WELL

**Allottee or Tribe Name:**

**Lease Number:** NMLC0060329

**Unit or CA Name:**

**Unit or CA Number:**

**US Well Number:** 3002550211

**Well Status:** Drilling Well

**Operator:** SPUR ENERGY  
PARTNERS LLC

**BLM Point of Contact**

**BLM POC Name:** Jonathon W Shepard

**BLM POC Title:** Petroleum Engineer

**BLM POC Phone:** 5752345972

**BLM POC Email Address:** jshepard@blm.gov

**Disposition:** Accepted

**Disposition Date:** 11/09/2022

**Signature:** Jonathon Shepard

CONFIDENTIAL



<b>Operator Name</b> SPUR ENERGY PARTNERS LLC	<b>Well Name</b> JG 16 STATE NORTH COM	<b>Well Number</b> 21H	<b>US Well Number</b> 3002550211
<b>SHL</b>	<b>County</b>	<b>State</b>	<b>Lease Number(s)</b> NMLC0060329
<b>Well Type</b> OIL WELL	<b>Well Status</b> Drilling Well	<b>Agreement Name</b>	<b>Agreement Number(s)</b>
<b>Allottee/Tribe Name</b>	<b>Well Pad Name</b> JG 16 STATE NORTH COM	<b>Well Pad Number</b> 20H, 21H, 60H	<b>ID</b> 10400082767

**Section 3 - Geologic**

Formation Name	Lithology	Describe Lithology	Elevation	TVD	MD	Mineral Resources	Describe Mineral
TOP SALT	ANHYDRITE		2996	1042	1042	OTHER	SALT
TANSILL	DOLOMITE, LIMESTONE		1981	2057	2057	NONE	
YATES	SANDSTONE		1876	2162	2162	NONE	
SEVEN RIVERS	DOLOMITE, SANDSTONE		1523	2515	2515	NATURAL GAS, OIL	
QUEEN	DOLOMITE, SANDSTONE		908	3130	3200	OIL, USEABLE WATER	
SAN ANDRES	DOLOMITE, LIMESTONE		153	3885	4000	NATURAL GAS, OIL	
GLORIETA	DOLOMITE, SILTSTONE		-1355	5393	5550	NATURAL GAS, OIL	
YESO	DOLOMITE		-1446	5484	5700	NATURAL GAS, OIL	
BLINEBRY	DOLOMITE		-1877	5915	6500	NATURAL GAS, OIL	

**Completion and Completed**

**Completion Data**

Wellbore Code	Completion Code	Interval Number	Case Number	Lease Number	Well Completion Type	Describe Well Completion Type	Completion Status	Date Completed	Date First Produced	Formation	Interval Top (MD)	Interval Bottom (MD)	Interval Perforated?	Perforation Size	Number of Holes	Status of Interval
00	X1	1	NMLC0060329	NMLC0060329	NEW		DRG	10-25-2022	10-26-2022	PADDOCK	6339	11397	Y	.42	900	OPEN

<b>Operator Name</b> SPUR ENERGY PARTNERS LLC	<b>Well Name</b> JG 16 STATE NORTH COM	<b>Well Number</b> 21H	<b>US Well Number</b> 3002550211
<b>SHL</b>	<b>County</b>	<b>State</b>	<b>Lease Number(s)</b> NMLC0060329
<b>Well Type</b> OIL WELL	<b>Well Status</b> Drilling Well	<b>Agreement Name</b>	<b>Agreement Number(s)</b>
<b>Allottee/Tribe Name</b>	<b>Well Pad Name</b> JG 16 STATE NORTH COM	<b>Well Pad Number</b> 20H, 21H, 60H	<b>ID</b> 10400082767

**Treatment Data**

Wellbore Code	Completion Code	Interval Number	Interval Treated?	Treatment Type	Total Fluid (bbls)	Total Proppant (lbs)	Treatment Remarks
00	X1	1	Y	FRAC	286679	5020401	

**Production Data**

Wellbore Code	Completion Code	Interval Number	API Oil Gravity	Gas Gravity	Production Method	Describe Production	Disposition of Gas	Describe Disposition
00	X1	1			ELECTRIC PUMP SUB-SURFACE		SOLD	

**Test Data**

Wellbore Code	Completion Code	Interval Number	Test Date	Hours Tested	24-Hour Rate Oil (bbls)	24-Hour Rate Gas (MCF)	24-Hour Rate Water(BWPD)	Gas-Oil Ratio (SCF/Bbl)	Choke Size	Tubing Pressure	Tubing Pressure Shut-In (psi)	Casing Pressure (psi)
00	X1	1	11/28/2022	24	200	151	1096	755		200		50

<b>Operator Name</b> SPUR ENERGY PARTNERS LLC	<b>Well Name</b> JG 16 STATE NORTH COM	<b>Well Number</b> 21H	<b>US Well Number</b> 3002550211
<b>SHL</b>	<b>County</b>	<b>State</b>	<b>Lease Number(s)</b> NMLC0060329
<b>Well Type</b> OIL WELL	<b>Well Status</b> Drilling Well	<b>Agreement Name</b>	<b>Agreement Number(s)</b>
<b>Allottee/Tribe Name</b>	<b>Well Pad Name</b> JG 16 STATE NORTH COM	<b>Well Pad Number</b> 20H, 21H, 60H	<b>ID</b> 10400082767

**Well Location**

**Survey Type:** RECTANGULAR

**Survey Number:** 19680

**Datum:** NAD83

**Vertical Datum:** NAVD88

**Reference Datum:** GL

	State	Meridian	County	Latitude	Longitude	Elevation (MSL)	Lease Type	Lease Number	Plug TVD (ft)	Plug MD (ft)	Plug Type	NS-Foot	NS-Indicator	EW-Foot	EW-Indicator	Township	Range	Section	Aliquot/Lot/Tract
SHL	NEW MEXICO	NEW MEXICO PRINCIPAL	EDDY	32.8382814	-103.779785	4038	STATE	STATE				1320	FNL	80	FWL	17S	32E	16	NWNW
KOP Well bore 00	NEW MEXICO	NEW MEXICO PRINCIPAL	EDDY	32.839854	-103.782238	-690	FEDERAL	NMLC0060329				1900	FNL	409	FEL	17S	30E	17	SENE
PPP Well bore 00	NEW MEXICO	NEW MEXICO PRINCIPAL	EDDY	32.8364994	-103.7796995	-1737	STATE	STATE				1968	FNL	106	FWL	17S	32E	16	SWNW
PPP Well bore 00	NEW MEXICO	NEW MEXICO PRINCIPAL	EDDY	32.8383371	-103.7800604	-1737	STATE	STATE				1979	FNL	1	FWL	17S	33E	16	SWNW
PPP Well bore 00	NEW MEXICO	NEW MEXICO PRINCIPAL	EDDY	32.8383371	-103.7800605	3045	FEDERAL	NMLC0060329				1368	FNL	1	FEL	17S	32E	17	SENE
EXIT Well bore 00	NEW MEXICO	NEW MEXICO PRINCIPAL	EDDY	32.8364072	-103.7634293	-1737	STATE	STATE				1990	FNL	122	FEL	17S	32E	16	SENE
BHL Well bore 00	NEW MEXICO	NEW MEXICO PRINCIPAL	EDDY	32.8363955	-103.7693031	-1699	STATE	STATE	5737	11419		1994	FNL	55	FEL	17S	32E	16	SENE

<b>Operator Name</b> SPUR ENERGY PARTNERS LLC	<b>Well Name</b> JG 16 STATE NORTH COM	<b>Well Number</b> 21H	<b>US Well Number</b> 3002550211
<b>SHL</b>	<b>County</b>	<b>State</b>	<b>Lease Number(s)</b> NMLC0060329
<b>Well Type</b> OIL WELL	<b>Well Status</b> Drilling Well	<b>Agreement Name</b>	<b>Agreement Number(s)</b>
<b>Allottee/Tribe Name</b>	<b>Well Pad Name</b> JG 16 STATE NORTH COM	<b>Well Pad Number</b> 20H, 21H, 60H	<b>ID</b> 10400082767

**Casing, Liner and Tubing**

**Casing and Liner**

Wellbore Code	Casing String Type	Hole Size	Top Setting Depth (MD)	Bottom Setting Depth (MD)	Casing Size	Wt(lbs/ft)	Casing Grade	Describe Other Casing Grade	Joint	Other Joint	Amount Pulled (ft)
00	SURFACE	17.5	0	950	13.375	54.5	J-55		BUTT		
00	INTERMEDIATE	12.25	0	3865	9.625	36	J-55		BUTT		
00	PRODUCTION	8.75	0	6118	7.0	32	L-80		OTHER	BK-HT	
00	PRODUCTION	8.75	6119	11464	5.5	20	L-80		OTHER	BK-HT	0

**Cementing**

Wellbore Code	Casing String Type	Stage Tool Depth	Cement Lead Type	Cement Lead Qty (sks)	Cement Lead Yield (cu.ft/sks)	Cement Lead Top (MD)	Cement Tail Type	Cement Tail Qty (sks)	Cement Tail Yield(cu.ft/sks)	Cement Tail Top (MD)	Total (Lead + Tail) Cement Slurry Volume
00	SURFACE		Class C Premium Plus	1095	1.87	0					364.7
00	INTERMEDIATE		Class C Premium Plus	140880	2.4	0	Class C Premium Plus	195	1.87	925	60282.7
00	PRODUCTION		Class C Premium Plus Cement	570	2.42	0	Class C Premium Plus Coment	570	2.42	0	654.1
00	PRODUCTION		Clas C Premium Plus Cement	570	2.42	0	Clas C Premium Plus Cement	1470	1.56	5100	654.1

<b>Operator Name</b> SPUR ENERGY PARTNERS LLC	<b>Well Name</b> JG 16 STATE NORTH COM	<b>Well Number</b> 21H	<b>US Well Number</b> 3002550211
<b>SHL</b>	<b>County</b>	<b>State</b>	<b>Lease Number(s)</b> NMLC0060329
<b>Well Type</b> OIL WELL	<b>Well Status</b> Drilling Well	<b>Agreement Name</b>	<b>Agreement Number(s)</b>
<b>Allottee/Tribe Name</b>	<b>Well Pad Name</b> JG 16 STATE NORTH COM	<b>Well Pad Number</b> 20H, 21H, 60H	<b>ID</b> 10400082767

**Tubing**

Wellbore Code	Tubing Size	Describe Other	Tubing Setting Depth (MD/ft)	Packer Depth (MD/ft)	Tubing Weight	Tubing Grade	Describe Other	Tubing Coupling	Describe Other
00	3.5		6019			J-55			

**Logs**

Wellbore Code	Log Upload	Was Well Cored?	Was DST Run?	Directional Survey?	Geologic Report	Wellbore Diagram
00	YES	NO	NO	YES	NO	YES

<b>Operator Name</b> SPUR ENERGY PARTNERS LLC	<b>Well Name</b> JG 16 STATE NORTH COM	<b>Well Number</b> 21H	<b>US Well Number</b> 3002550211
<b>SHL</b>	<b>County</b>	<b>State</b>	<b>Lease Number(s)</b> NMLC0060329
<b>Well Type</b> OIL WELL	<b>Well Status</b> Drilling Well	<b>Agreement Name</b>	<b>Agreement Number(s)</b>
<b>Allottee/Tribe Name</b>	<b>Well Pad Name</b> JG 16 STATE NORTH COM	<b>Well Pad Number</b> 20H, 21H, 60H	<b>ID</b> 10400082767

**Operator**

I hereby certify that the foregoing and attached information is complete and correct as determined from all available records. Title 18 U.S.C. Section 1001 and Title 43 U.S.C. Section 1212, make it a crime for any person knowingly and willfully to make any department or agency of the United States any false, fictitious or fraudulent statements or representations as to any matter within its jurisdiction. Electronic submission of Well Completion Reports through this system satisfies regulations requiring a submission of Form 3160-4 or a Well Completion Report.

**Name:** SPUR ENERGY PARTNERS LLC

**Signed By:** SARAH CHAPMAN                      **Title:** Regulatory Directory                      **Signed on:** 02/14/2023

**Street Address:** 9655 KATY FREEWAY, SUITE 500

**City:** Houston    **State:** TX    **Zip:** 77024

**Phone:** (832)930-8613

**Email address:** SCHAPMAN@SPUREPLLC.COM

**Field**

**Representative Name:**

**Street Address:**

**City:**    **State:**    **Zip:**

**Phone:**    **Extension:**

**Email address:**

**Attachments**

FINAL\_JG\_16\_STATE\_NORTH\_COM\_21H\_5MD\_20230201085626.tiff

JG\_16\_State\_North\_Com\_21H\_Direct\_Plan\_20230201085632.pdf

JG\_16\_State\_North\_Com\_21H\_Direct\_Plot\_20230201085632.pdf

JG\_16\_State\_North\_Com\_21H\_Direct\_Cert\_20230201085632.pdf

Visio\_JG\_State\_21H\_WBD\_20230214130422.pdf

<b>Operator Name</b> SPUR ENERGY PARTNERS LLC	<b>Well Name</b> JG 16 STATE NORTH COM	<b>Well Number</b> 21H	<b>US Well Number</b> 3002550211
<b>SHL</b>	<b>County</b>	<b>State</b>	<b>Lease Number(s)</b> NMLC0060329
<b>Well Type</b> OIL WELL	<b>Well Status</b> Drilling Well	<b>Agreement Name</b>	<b>Agreement Number(s)</b>
<b>Allottee/Tribe Name</b>	<b>Well Pad Name</b> JG 16 STATE NORTH COM	<b>Well Pad Number</b> 20H, 21H, 60H	<b>ID</b> 10400082767

JG\_16\_State\_North\_Com\_21H\_As\_Completed\_20230214130430.pdf

# JG 16 State North Com 21H

Lea County, NM  
API# 30-025-50211

SPUD DATE: 6/13/2022  
ELEV: 4038' GR, 20' KB

CURRENT WBD

**13-3/8" 54.5# J-55 BTC Csg @ 950'**  
CMT W/ 650 SX LEAD (12.4 PPG, 1.78 CUFT/SK) & 445 SX TAIL (14.8 PPG, 1.33 CUFT/SK) CLASS C CEMENT  
CIRC 156 BBLS TO SURF, TOC @ SURF

**TUBING DETAIL**  
3-1/2" 9.3# J-55 EUE 8RD POLY-LINED TUBING  
ESP ASSEMBLY  
INTAKE @ 5,985'  
PIP SENSOR @ 6,008'  
EOT @ 6,015'

**9-5/8" 36# J-55 BTC Csg @ 3,865'**  
CMT W/ 880 SX LEAD (12 PPG, 2.38 CUFT/SK) & 195 SX TAIL (13.5 PPG, 1.73 CUFT/SK) CLASS C CEMENT  
CIRC 102 BBLS TO SURF, TOC @ SURF

**7" 32# L-80 BK-HT Csg @ 6,118'**  
**5-1/2" 20# L-80 BK-HT Csg @ 11,464'**  
CMT W/ 570 SX LEAD (11.4 PPG, 2.39 CUFT/SK) & 1470 SX TAIL (13.2 PPG, 1.4 CUFT/SK) CLASS C CEMENT  
CIRC 171 BBLS TO SURF, TOC @ SURF

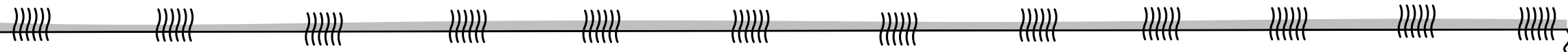
**LOWER PADDOCK COMPLETION**  
PERF & FRAC IN 25 STAGES F/ 6,339'-11,397'  
3-1/8" GUNS, 0.42 EHD, 60 DEG, 6 CLUSTERS/STG,  
4 SHOTS/CLUSTER, 600 TOTAL HOLES,  
29,721 GALS 15% HCL, 291,986 BBLS FR WATER,  
2,270,996# 100 MESH, 508,152# 20/40 PREMIUM WHITE, 2,241,253# 40/70 PERMIAN

CROSS OVER FROM 7" TO 5-1/2" CSG @ 6,118'

KOP @ 4,793'

TOP PERF @ 6,339'

BOTTOM PERF @ 11,397'



TD (MD) @ 11,464'  
TD (TVD) @ 5,737'  
PBTD @ 11,419' MD

U.S. Department of the Interior  
BUREAU OF LAND MANAGEMENT

**Well Name:** JG 16 STATE NORTH  
COM

**Well Location:** T17S / R32E / SEC 16 /  
NWNW /

**County or Parish/State:** /

**Well Number:** 21H

**Type of Well:** OIL WELL

**Allottee or Tribe Name:**

**Lease Number:** NMLC0060329

**Unit or CA Name:**

**Unit or CA Number:**

**US Well Number:** 3002550211

**Well Status:** Drilling Well

**Operator:** SPUR ENERGY  
PARTNERS LLC

### Subsequent Report

**Sundry ID:** 2696748

**Type of Submission:** Subsequent Report

**Type of Action:** Hydraulic Fracturing

**Date Sundry Submitted:** 10/06/2022

**Time Sundry Submitted:** 07:31

**Date Operation Actually Began:** 09/11/2022

**Actual Procedure:** 09/11/2022 RIH & cleanout to PBTD @ 11419'. RIH & perf from 6339'-11397', total shots 900/ft @ 0.42 shot size. Frac in 25 stages w/ 12040518gal slickwater and 5020401# sand. 09/22/2022 rig down wireline and cleanout. Will file tbg sundry once in hole.

Well Name: JG 16 STATE NORTH  
COM

Well Location: T17S / R32E / SEC 16 /  
NWNW /

County or Parish/State: /

Well Number: 21H

Type of Well: OIL WELL

Allottee or Tribe Name:

Lease Number: NMLC0060329

Unit or CA Name:

Unit or CA Number:

US Well Number: 3002550211

Well Status: Drilling Well

Operator: SPUR ENERGY  
PARTNERS LLC

### Operator

I certify that the foregoing is true and correct. Title 18 U.S.C. Section 1001 and Title 43 U.S.C. Section 1212, make it a crime for any person knowingly and willfully to make to any department or agency of the United States any false, fictitious or fraudulent statements or representations as to any matter within its jurisdiction. Electronic submission of Sundry Notices through this system satisfies regulations requiring a

Operator Electronic Signature: SARAH CHAPMAN

Signed on: OCT 06, 2022 07:31 AM

Name: SPUR ENERGY PARTNERS LLC

Title: Regulatory Directory

Street Address: 9655 KATY FREEWAY, SUITE 500

City: Houston

State: TX

Phone: (832) 930-8613

Email address: SCHAPMAN@SPUREPLLC.COM

### Field

Representative Name:

Street Address:

City:

State:

Zip:

Phone:

Email address:

### BLM Point of Contact

BLM POC Name: Jonathon W Shepard

BLM POC Title: Petroleum Engineer

BLM POC Phone: 5752345972

BLM POC Email Address: jshepard@blm.gov

Disposition: Accepted

Disposition Date: 10/19/2022

Signature: Jonathon Shepard

Sante Fe Main Office  
Phone: (505) 476-3441

General Information  
Phone: (505) 629-6116

Online Phone Directory  
<https://www.emnrd.nm.gov/ocd/contact-us>

**State of New Mexico**  
**Energy, Minerals and Natural Resources**  
**Oil Conservation Division**  
**1220 S. St Francis Dr.**  
**Santa Fe, NM 87505**

ACKNOWLEDGMENTS

Action 186126

**ACKNOWLEDGMENTS**

Operator: Spur Energy Partners LLC 9655 Katy Freeway Houston, TX 77024	OGRID: 328947
	Action Number: 186126
	Action Type: [C-104] Completion Packet (C-104C)

**ACKNOWLEDGMENTS**

<input checked="" type="checkbox"/>	I hereby certify that the required Water Use Report has been, or will be, submitted for this wells completion.
<input checked="" type="checkbox"/>	I hereby certify that the required FracFocus disclosure has been, or will be, submitted for this wells completion.

Sante Fe Main Office  
Phone: (505) 476-3441

General Information  
Phone: (505) 629-6116

Online Phone Directory  
<https://www.emnrd.nm.gov/ocd/contact-us>

**State of New Mexico**  
**Energy, Minerals and Natural Resources**  
**Oil Conservation Division**  
**1220 S. St Francis Dr.**  
**Santa Fe, NM 87505**

CONDITIONS

Action 186126

**CONDITIONS**

Operator: Spur Energy Partners LLC 9655 Katy Freeway Houston, TX 77024	OGRID: 328947
	Action Number: 186126
	Action Type: [C-104] Completion Packet (C-104C)

**CONDITIONS**

Created By	Condition	Condition Date
plmartinez	None	4/30/2026