

**District I**

1625 N. French Dr., Hobbs, NM 88240

**District II**

811 S. First St., Artesia, NM 88210

**District III**

1000 Rio Brazos Rd., Aztec, NM 87410

**District IV**

1220 S. St. Francis Dr., Santa Fe, NM 87505

**State of New Mexico  
Energy, Minerals & Natural Resources**

**Oil Conservation Division  
1220 South St. Francis Dr.  
Santa Fe, NM 87505**

Form C-104

Revised August 1, 2011

Submit one copy to appropriate District Office

AMENDED REPORT

**I. REQUEST FOR ALLOWABLE AND AUTHORIZATION TO TRANSPORT**

|  |  |  |
|--|--|--|
| <sup>1</sup> Operator name and Address<br>Kaiser-Francis Oil Company<br>P.O. Box 21468, Tulsa, OK 74121-1468 |  | <sup>2</sup> OGRID Number<br>12361                                       |
|  |  | <sup>3</sup> Reason for Filing Code; Effective Date<br>New Well; 11/1/22 |
| <sup>4</sup> API Number<br>30-025-48479  | <sup>5</sup> Pool Name<br>Ojo Chiso; Wolfcamp, Southwest | <sup>6</sup> Pool Code<br>98265  |
| <sup>7</sup> Property Code<br>316707   | <sup>8</sup> Property Name<br>Bell Lake Unit North       | <sup>9</sup> Well Number<br>412H   |

**II. <sup>10</sup> Surface Location**

| Ul or lot no. | Section | Township | Range | Lot Idn | Feet from the | North/South Line | Feet from the | East/West line | County |
|---------------|---------|----------|-------|---------|---------------|------------------|---------------|----------------|--------|
| H             | 6       | 23S      | 34E   |         | 1,770         | North            | 175           | East           | Lea    |

**<sup>11</sup> Bottom Hole Location**

| UL or lot no. | Section | Township | Range | Lot Idn | Feet from the | North/South line | Feet from the | East/West line | County |
|---------------|---------|----------|-------|---------|---------------|------------------|---------------|----------------|--------|
| P             | 7       | 23S      | 34E   |         | 112           | South            | 151           | East           | Lea    |

| <sup>12</sup> Lse Code | <sup>13</sup> Producing Method Code | <sup>14</sup> Gas Connection Date | <sup>15</sup> C-129 Permit Number | <sup>16</sup> C-129 Effective Date | <sup>17</sup> C-129 Expiration Date |
|------------------------|-------------------------------------|-----------------------------------|-----------------------------------|------------------------------------|-------------------------------------|
| F                      | F                                   | 10/25/22                          |                                   |                                    |                                     |

**III. Oil and Gas Transporters**

| <sup>18</sup> Transporter OGRID | <sup>19</sup> Transporter Name and Address                                   | <sup>20</sup> O/G/W |
|---------------------------------|--|---------------------|
|                                 | Markwest Tornado GP, LLC<br>1515 Araphoe St., Suite 1600<br>Denver, CO 80202 | G                   |
|                                 | Plains Pipeline LP<br>333 Clay St., #1600<br>Houston, TX 77002               | O                   |
|                                 |  |                     |
|                                 |  |                     |
|                                 |  |                     |

**IV. Well Completion Data**

| <sup>21</sup> Spud Date | <sup>22</sup> Ready Date           | <sup>23</sup> TD        | <sup>24</sup> PBD          | <sup>25</sup> Perforations | <sup>26</sup> DHC, MC |
|-------------------------|------------------------------------|-------------------------|----------------------------|----------------------------|-----------------------|
| 8/30/21                 | 10/18/22                           | 19,309' MD/ 11,298' TVD | 19,135' MD/ 11,298' TVD    | 11,580'-19,103'            |                       |
| <sup>27</sup> Hole Size | <sup>28</sup> Casing & Tubing Size | <sup>29</sup> Depth Set | <sup>30</sup> Sacks Cement |                            |                       |
| 17 1/2"                 | 13 3/8"                            | 1,297'                  | 1,320 sx.                  |                            |                       |
| 12 1/4"                 | 10 3/4"                            | 4,985'                  | 815 sx.                    |                            |                       |
| 9 7/8"                  | 7 5/8"                             | 10,681'                 | 825 sx.                    |                            |                       |
| 6 3/4"                  | 5 1/2"                             | 19,279'                 | 1,260 sx.                  |                            |                       |

**V. Well Test Data**

| <sup>31</sup> Date New Oil | <sup>32</sup> Gas Delivery Date | <sup>33</sup> Test Date | <sup>34</sup> Test Length | <sup>35</sup> Tbg. Pressure | <sup>36</sup> Csg. Pressure |
|----------------------------|---------------------------------|-------------------------|---------------------------|-----------------------------|-----------------------------|
| 11/1/22                    | 11/1/22                         | 11/1/22                 | 24 hrs.                   |                             | 3,990                       |
| <sup>37</sup> Choke Size   | <sup>38</sup> Oil               | <sup>39</sup> Water     | <sup>40</sup> Gas         | <sup>41</sup> Test Method   |                             |
| 16/64"                     | 368                             | 1,341                   | 806                       |                             |                             |

|   |                                  |  |
|---|----------------------------------|--|
| <sup>42</sup> I hereby certify that the rules of the Oil Conservation Division have been complied with and that the information given above is true and complete to the best of my knowledge and belief.<br>Signature:<br><i>Christina Opfer</i><br>Printed name: Christina Opfer<br>Title: Regulatory Manager<br>E-mail Address: ChristinaO@kfoc.net<br>Date: 11/14/2022 | <b>OIL CONSERVATION DIVISION</b> |  |
|   | Approved by:                     |  |
|   | Title:                           |  |
|   | Approval Date:                   |  |
|   | Phone: 918-491-4468              |  |

District I  
1625 N. French Dr., Hobbs, NM 88240  
Phone: (575) 393-6161 Fax: (575) 393-0720

District II  
811 S. First St., Artesia, NM 88210  
Phone: (575) 748-1283 Fax: (575) 748-9720

District III  
1000 Rio Brazos Road, Aztec, NM 87410  
Phone: (505) 334-6178 Fax: (505) 334-6170

District IV  
1220 S. St. Francis Dr., Santa Fe, NM 87505  
Phone: (505) 476-3460 Fax: (505) 476-3462

State of New Mexico  
Energy, Minerals & Natural Resources Department  
OIL CONSERVATION DIVISION  
1220 South St. Francis Dr.  
Santa Fe, NM 87505

Form C-102  
Revised August 1, 2011  
Submit one copy to appropriate  
District Office  
 AMENDED REPORT

WELL LOCATION AND ACREAGE DEDICATION PLAT

|  |  |   |  |  |   |
|--|--|---|--|--|---|
| <sup>1</sup> API Number<br><b>30-025-48479</b> |  | <sup>2</sup> Pool Code<br><b>98265</b>                          |  | <sup>3</sup> Pool Name<br><b>Ojo Chiso; Wolcamp, Southwest</b> |   |
| <sup>4</sup> Property Code<br><b>316707</b>    |  | <sup>5</sup> Property Name<br><b>BELL LAKE UNIT NORTH</b>       |  |  | <sup>6</sup> Well Number<br><b>412H</b> |
| <sup>7</sup> OGRID No.<br><b>12361</b>         |  | <sup>8</sup> Operator Name<br><b>KAISER-FRANCIS OIL COMPANY</b> |  |  | <sup>9</sup> Elevation<br><b>3452.3</b> |

<sup>10</sup> Surface Location

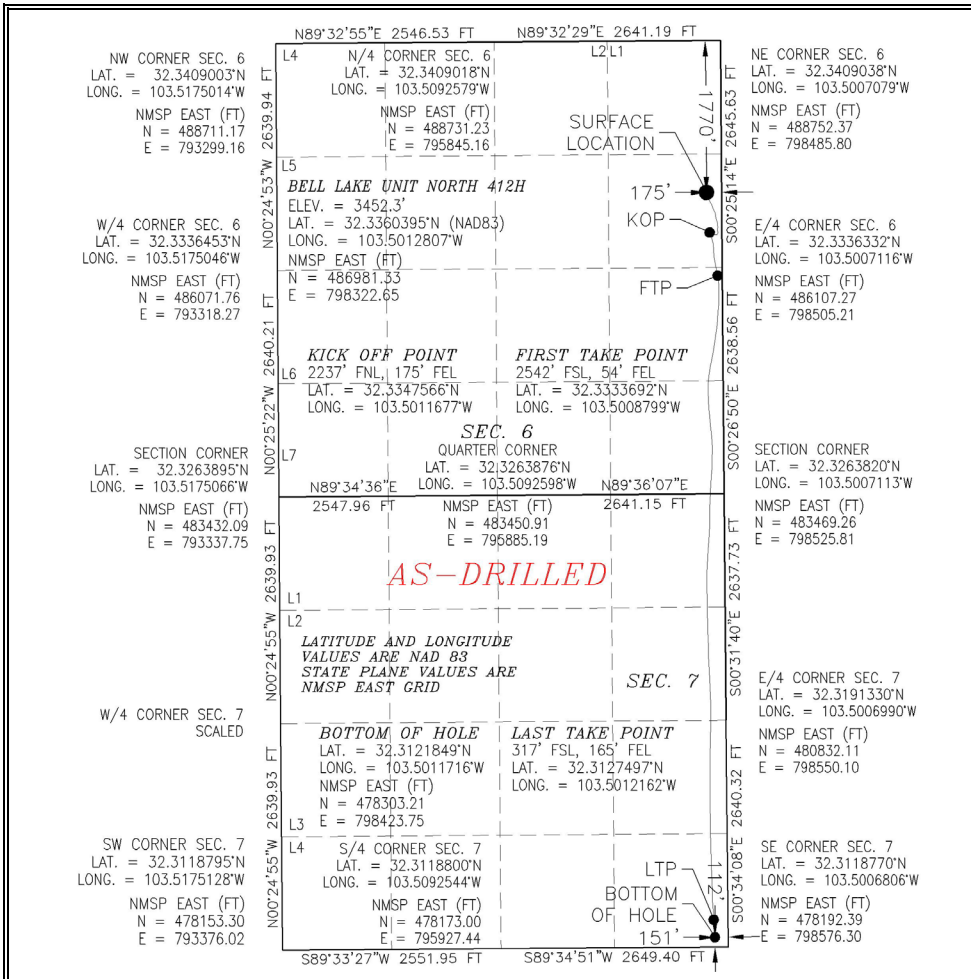
| UL or lot no. | Section  | Township    | Range       | Lot Idn | Feet from the | North/South line | Feet from the | East/West line | County     |
|---------------|----------|-------------|-------------|---------|---------------|------------------|---------------|----------------|------------|
| <b>H</b>      | <b>6</b> | <b>23 S</b> | <b>34 E</b> |         | <b>1770</b>   | <b>NORTH</b>     | <b>175</b>    | <b>EAST</b>    | <b>LEA</b> |

<sup>11</sup> Bottom Hole Location If Different From Surface

| UL or lot no. | Section  | Township    | Range       | Lot Idn | Feet from the | North/South line | Feet from the | East/West line | County     |
|---------------|----------|-------------|-------------|---------|---------------|------------------|---------------|----------------|------------|
| <b>P</b>      | <b>7</b> | <b>23 S</b> | <b>34 E</b> |         | <b>112</b>    | <b>SOUTH</b>     | <b>151</b>    | <b>EAST</b>    | <b>LEA</b> |

|   |                               |                                  |   |
|---|-------------------------------|----------------------------------|---|
| <sup>12</sup> Dedicated Acres<br><b>480</b> | <sup>13</sup> Joint or Infill | <sup>14</sup> Consolidation Code | <sup>15</sup> Order No.<br><b>R-14602</b> |
|---|-------------------------------|----------------------------------|---|

No allowable will be assigned to this completion until all interests have been consolidated or a non-standard unit has been approved by the division.



**<sup>17</sup> OPERATOR CERTIFICATION**  
I hereby certify that the information contained herein is true and complete to the best of my knowledge and belief, and that this organization either owns a working interest or unleased mineral interest in the land including the proposed bottom hole location or has a right to drill this well at this location pursuant to a contract with an owner of such a mineral or working interest, or to a voluntary pooling agreement or a compulsory pooling order heretofore entered by the division.

**Christina Opfer**      **11/30/22**  
Signature      Date

**Christina Opfer**  
Printed Name

**ChristinaO@kfoc.net**  
E-mail Address

**<sup>18</sup> SURVEYOR CERTIFICATION**  
I hereby certify that the well location shown on this plat was plotted from field notes of actual surveys made by me or under my supervision, and that the same is true and correct to the best of my belief.

NOVEMBER 22, 2022  
Date of Survey

**Christina Opfer**  
Signature and Seal of Professional Surveyor

Certificate Number: **LS 12797**  
Professional Surveyor No. **7660**

Intent  As Drilled

|  |  |                     |
|--|--|---------------------|
| API #<br>30-025-48479                        |  |                     |
| Operator Name:<br>KAISER-FRANCIS OIL COMPANY | Property Name:<br>BELL LAKE UNIT NORTH | Well Number<br>412H |

Kick Off Point (KOP)

| UL                     | Section | Township | Range | Lot | Feet                     | From N/S | Feet | From E/W | County    |
|------------------------|---------|----------|-------|-----|--------------------------|----------|------|----------|-----------|
| H                      | 6       | 23S      | 34E   |     | 2237                     | NORTH    | 175  | EAST     | LEA       |
| Latitude<br>32.3347566 |         |          |       |     | Longitude<br>103.5011677 |          |      |          | NAD<br>83 |

First Take Point (FTP)

| UL                     | Section | Township | Range | Lot | Feet                     | From N/S | Feet | From E/W | County    |
|------------------------|---------|----------|-------|-----|--------------------------|----------|------|----------|-----------|
| I                      | 6       | 23S      | 34E   |     | 2452                     | SOUTH    | 54   | EAST     | LEA       |
| Latitude<br>32.3333692 |         |          |       |     | Longitude<br>103.5008799 |          |      |          | NAD<br>83 |

Last Take Point (LTP)

| UL                     | Section | Township | Range | Lot | Feet                     | From N/S | Feet | From E/W | County    |
|------------------------|---------|----------|-------|-----|--------------------------|----------|------|----------|-----------|
| P                      | 7       | 23S      | 34E   |     | 317                      | SOUTH    | 165  | EAST     |           |
| Latitude<br>32.3127497 |         |          |       |     | Longitude<br>103.5012162 |          |      |          | NAD<br>83 |

Is this well the defining well for the Horizontal Spacing Unit?

Is this well an infill well?

If infill is yes please provide API if available, Operator Name and well number for Defining well for Horizontal Spacing Unit.

|                |                |             |
|----------------|----------------|-------------|
| API #          |                |             |
| Operator Name: | Property Name: | Well Number |

KZ 06/29/2018

KAISER FRANCIS OIL CO.  
 BELL LAKE UNIT N. 412H - HORIZONTAL

LEA COUNTY, N.M. 27  
 SEC 6-T23S-R34E

Your Ref:

| Measured<br>Depth<br>(ft) | Incl. | Azim.  | Vertical<br>Depth<br>(ft) | Northings<br>(ft) | Eastings<br>(ft) | LATDEC<br>(ft) | LONGDEC<br>(dega/100ft) | Vertical<br>Section | Dogleg<br>Rate |
|---------------------------|-------|--------|---------------------------|-------------------|------------------|----------------|-------------------------|---------------------|----------------|
| 0.00                      | 0.00  | 0.00   | 0.00                      | 0.00              | 0.00             | 32.34          | -103.50                 | 0.00                | 0.00           |
| 146.00                    | 0.53  | 341.93 | 146.00                    | 0.64              | -0.21            | 32.34          | -103.50                 | -0.64               | 0.36           |
| 236.00                    | 0.42  | 341.45 | 235.99                    | 1.35              | -0.44            | 32.34          | -103.50                 | -1.35               | 0.12           |
| 423.00                    | 0.43  | 281.87 | 422.99                    | 2.14              | -1.35            | 32.34          | -103.50                 | -2.14               | 0.23           |
| 604.00                    | 1.86  | 265.18 | 603.95                    | 2.04              | -4.94            | 32.34          | -103.50                 | -2.04               | 0.80           |
| 696.00                    | 2.38  | 257.67 | 695.89                    | 1.50              | -8.29            | 32.34          | -103.50                 | -1.50               | 0.64           |
| 787.00                    | 3.22  | 252.22 | 786.78                    | 0.32              | -12.57           | 32.34          | -103.50                 | -0.32               | 0.97           |
| 878.00                    | 3.70  | 249.84 | 877.61                    | -1.47             | -17.76           | 32.34          | -103.50                 | 1.47                | 0.55           |
| 968.00                    | 3.31  | 236.05 | 967.44                    | -3.92             | -22.65           | 32.34          | -103.50                 | 3.92                | 1.03           |
| 1060.00                   | 3.15  | 238.46 | 1059.30                   | -6.73             | -27.00           | 32.34          | -103.50                 | 6.73                | 0.23           |
| 1150.00                   | 1.27  | 277.70 | 1149.23                   | -7.89             | -30.10           | 32.34          | -103.50                 | 7.89                | 2.57           |
| 1246.00                   | 1.32  | 284.00 | 1245.21                   | -7.48             | -32.23           | 32.34          | -103.50                 | 7.48                | 0.16           |
| 1344.00                   | 1.80  | 276.32 | 1343.17                   | -7.04             | -34.85           | 32.34          | -103.50                 | 7.04                | 0.53           |
| 1439.00                   | 1.32  | 284.15 | 1438.14                   | -6.61             | -37.40           | 32.34          | -103.50                 | 6.61                | 0.55           |
| 1534.00                   | 1.85  | 266.39 | 1533.10                   | -6.43             | -39.99           | 32.34          | -103.50                 | 6.43                | 0.75           |
| 1629.00                   | 1.49  | 254.18 | 1628.06                   | -6.87             | -42.71           | 32.34          | -103.50                 | 6.87                | 0.53           |
| 1723.00                   | 1.89  | 115.84 | 1722.04                   | -7.88             | -42.49           | 32.34          | -103.50                 | 7.88                | 3.36           |
| 1818.00                   | 5.01  | 126.38 | 1816.86                   | -11.02            | -37.74           | 32.34          | -103.50                 | 11.02               | 3.34           |
| 1913.00                   | 7.56  | 133.15 | 1911.28                   | -17.76            | -29.83           | 32.34          | -103.50                 | 17.76               | 2.79           |
| 2008.00                   | 9.14  | 139.13 | 2005.27                   | -27.74            | -20.34           | 32.34          | -103.50                 | 27.74               | 1.90           |
| 2103.00                   | 9.23  | 136.67 | 2099.05                   | -38.98            | -10.17           | 32.34          | -103.50                 | 38.98               | 0.42           |
| 2197.00                   | 10.42 | 136.67 | 2191.67                   | -50.65            | 0.83             | 32.34          | -103.50                 | 50.65               | 1.27           |
| 2292.00                   | 12.66 | 145.19 | 2284.75                   | -65.45            | 12.67            | 32.34          | -103.50                 | 65.45               | 2.96           |
| 2387.00                   | 13.89 | 146.69 | 2377.21                   | -83.53            | 24.88            | 32.34          | -103.50                 | 83.53               | 1.34           |
| 2481.00                   | 14.51 | 148.79 | 2468.34                   | -103.03           | 37.18            | 32.34          | -103.50                 | 103.03              | 0.86           |
| 2576.00                   | 14.73 | 153.63 | 2560.27                   | -124.03           | 48.71            | 32.34          | -103.50                 | 124.03              | 1.31           |
| 2671.00                   | 15.34 | 155.30 | 2652.02                   | -146.27           | 59.33            | 32.34          | -103.50                 | 146.27              | 0.79           |
| 2766.00                   | 15.96 | 158.99 | 2743.50                   | -169.88           | 69.26            | 32.34          | -103.50                 | 169.88              | 1.23           |
| 2861.00                   | 15.52 | 156.44 | 2834.94                   | -193.72           | 79.02            | 32.34          | -103.50                 | 193.72              | 0.86           |
| 2956.00                   | 16.62 | 155.21 | 2926.22                   | -217.71           | 89.80            | 32.34          | -103.50                 | 217.71              | 1.21           |
| 3051.00                   | 16.84 | 166.28 | 3017.23                   | -243.42           | 98.76            | 32.34          | -103.50                 | 243.42              | 3.36           |
| 3145.00                   | 16.62 | 170.59 | 3107.25                   | -269.91           | 104.19           | 32.34          | -103.50                 | 269.91              | 1.34           |

|         |       |        |         |         |        |       |         |        |      |
|---------|-------|--------|---------|---------|--------|-------|---------|--------|------|
| 3239.00 | 16.04 | 166.55 | 3197.46 | -295.80 | 109.41 | 32.34 | -103.50 | 295.80 | 1.36 |
| 3334.00 | 15.82 | 163.56 | 3288.81 | -320.98 | 116.13 | 32.34 | -103.50 | 320.98 | 0.89 |
| 3429.00 | 14.51 | 167.60 | 3380.51 | -345.03 | 122.35 | 32.33 | -103.50 | 345.03 | 1.77 |
| 3524.00 | 13.89 | 167.78 | 3472.60 | -367.80 | 127.32 | 32.33 | -103.50 | 367.80 | 0.65 |
| 3618.00 | 10.55 | 174.63 | 3564.47 | -387.40 | 130.51 | 32.33 | -103.50 | 387.40 | 3.87 |
| 3713.00 | 8.53  | 183.25 | 3658.15 | -403.09 | 130.93 | 32.33 | -103.50 | 403.09 | 2.60 |
| 3808.00 | 6.59  | 186.76 | 3752.32 | -415.54 | 129.88 | 32.33 | -103.50 | 415.54 | 2.10 |
| 3902.00 | 4.31  | 186.32 | 3845.89 | -424.41 | 128.86 | 32.33 | -103.50 | 424.41 | 2.43 |
| 3997.00 | 3.74  | 177.36 | 3940.66 | -431.05 | 128.61 | 32.33 | -103.50 | 431.05 | 0.89 |
| 4092.00 | 3.82  | 173.58 | 4035.45 | -437.29 | 129.11 | 32.33 | -103.50 | 437.29 | 0.28 |
| 4187.00 | 3.60  | 180.87 | 4130.25 | -443.42 | 129.42 | 32.33 | -103.50 | 443.42 | 0.55 |
| 4282.00 | 2.86  | 174.28 | 4225.10 | -448.76 | 129.61 | 32.33 | -103.50 | 448.76 | 0.87 |
| 4377.00 | 2.99  | 174.90 | 4319.98 | -453.59 | 130.06 | 32.33 | -103.50 | 453.59 | 0.14 |
| 4471.00 | 3.08  | 158.11 | 4413.85 | -458.37 | 131.22 | 32.33 | -103.50 | 458.37 | 0.95 |
| 4566.00 | 2.81  | 172.09 | 4508.72 | -463.05 | 132.49 | 32.33 | -103.50 | 463.05 | 0.81 |
| 4661.00 | 1.85  | 204.87 | 4603.65 | -466.75 | 132.17 | 32.33 | -103.50 | 466.75 | 1.69 |
| 4756.00 | 2.11  | 189.31 | 4698.59 | -469.86 | 131.24 | 32.33 | -103.50 | 469.86 | 0.63 |
| 4943.00 | 1.93  | 202.85 | 4885.48 | -476.16 | 129.46 | 32.33 | -103.50 | 476.16 | 0.27 |
| 5025.00 | 1.98  | 194.15 | 4967.43 | -478.81 | 128.58 | 32.33 | -103.50 | 478.81 | 0.37 |
| 5120.00 | 2.24  | 224.82 | 5062.37 | -481.72 | 126.87 | 32.33 | -103.50 | 481.72 | 1.20 |
| 5215.00 | 2.07  | 199.60 | 5157.30 | -484.65 | 124.99 | 32.33 | -103.50 | 484.65 | 1.01 |
| 5310.00 | 1.71  | 207.15 | 5252.25 | -487.53 | 123.76 | 32.33 | -103.50 | 487.53 | 0.46 |
| 5404.00 | 0.92  | 254.35 | 5346.23 | -488.98 | 122.40 | 32.33 | -103.50 | 488.98 | 1.36 |
| 5499.00 | 0.97  | 242.05 | 5441.21 | -489.56 | 120.95 | 32.33 | -103.50 | 489.56 | 0.22 |
| 5594.00 | 0.84  | 243.10 | 5536.20 | -490.25 | 119.62 | 32.33 | -103.50 | 490.25 | 0.14 |
| 5689.00 | 1.05  | 277.99 | 5631.19 | -490.45 | 118.14 | 32.33 | -103.50 | 490.45 | 0.63 |
| 5783.00 | 0.97  | 267.45 | 5725.17 | -490.36 | 116.49 | 32.33 | -103.50 | 490.36 | 0.21 |
| 5878.00 | 0.97  | 268.59 | 5820.16 | -490.42 | 114.88 | 32.33 | -103.50 | 490.42 | 0.02 |
| 5973.00 | 1.05  | 274.13 | 5915.15 | -490.38 | 113.21 | 32.33 | -103.50 | 490.38 | 0.13 |
| 6068.00 | 0.84  | 274.48 | 6010.13 | -490.26 | 111.65 | 32.33 | -103.50 | 490.26 | 0.22 |
| 6163.00 | 0.79  | 262.88 | 6105.12 | -490.29 | 110.30 | 32.33 | -103.50 | 490.29 | 0.18 |
| 6258.00 | 0.97  | 256.81 | 6200.11 | -490.55 | 108.87 | 32.33 | -103.50 | 490.55 | 0.21 |
| 6353.00 | 0.70  | 256.64 | 6295.10 | -490.87 | 107.52 | 32.33 | -103.50 | 490.87 | 0.28 |
| 6448.00 | 0.84  | 275.44 | 6390.09 | -490.94 | 106.27 | 32.33 | -103.50 | 490.94 | 0.30 |
| 6542.00 | 0.44  | 299.18 | 6484.09 | -490.69 | 105.26 | 32.33 | -103.50 | 490.69 | 0.50 |
| 6638.00 | 0.62  | 299.18 | 6580.08 | -490.26 | 104.49 | 32.33 | -103.50 | 490.26 | 0.19 |
| 6732.00 | 0.70  | 299.09 | 6674.08 | -489.73 | 103.54 | 32.33 | -103.50 | 489.73 | 0.09 |
| 6827.00 | 0.70  | 270.08 | 6769.07 | -489.45 | 102.46 | 32.33 | -103.50 | 489.45 | 0.37 |
| 6922.00 | 0.62  | 267.18 | 6864.06 | -489.48 | 101.36 | 32.33 | -103.50 | 489.48 | 0.09 |
| 7017.00 | 0.62  | 268.94 | 6959.06 | -489.51 | 100.34 | 32.33 | -103.50 | 489.51 | 0.02 |
| 7112.00 | 0.70  | 245.83 | 7054.05 | -489.76 | 99.29  | 32.33 | -103.50 | 489.76 | 0.29 |
| 7207.00 | 0.53  | 234.66 | 7149.05 | -490.25 | 98.40  | 32.33 | -103.50 | 490.25 | 0.22 |
| 7302.00 | 0.92  | 261.21 | 7244.04 | -490.62 | 97.29  | 32.33 | -103.50 | 490.62 | 0.53 |
| 7397.00 | 0.88  | 266.74 | 7339.03 | -490.78 | 95.81  | 32.33 | -103.50 | 490.78 | 0.10 |
| 7492.00 | 0.84  | 318.25 | 7434.02 | -490.30 | 94.62  | 32.33 | -103.50 | 490.30 | 0.79 |
| 7587.00 | 0.92  | 347.52 | 7529.01 | -489.04 | 93.99  | 32.33 | -103.50 | 489.04 | 0.48 |
| 7682.00 | 0.53  | 300.49 | 7624.00 | -488.07 | 93.45  | 32.33 | -103.50 | 488.07 | 0.72 |

|          |       |        |          |          |        |       |         |         |       |
|----------|-------|--------|----------|----------|--------|-------|---------|---------|-------|
| 7777.00  | 0.66  | 265.43 | 7719.00  | -487.89  | 92.52  | 32.33 | -103.50 | 487.89  | 0.40  |
| 7872.00  | 0.62  | 262.26 | 7813.99  | -488.00  | 91.47  | 32.33 | -103.50 | 488.00  | 0.06  |
| 7967.00  | 0.92  | 270.70 | 7908.98  | -488.06  | 90.19  | 32.33 | -103.50 | 488.06  | 0.34  |
| 8061.00  | 0.70  | 262.79 | 8002.97  | -488.13  | 88.87  | 32.33 | -103.50 | 488.13  | 0.26  |
| 8156.00  | 0.97  | 271.84 | 8097.96  | -488.17  | 87.49  | 32.33 | -103.50 | 488.17  | 0.32  |
| 8251.00  | 1.10  | 261.03 | 8192.95  | -488.29  | 85.79  | 32.33 | -103.50 | 488.29  | 0.25  |
| 8346.00  | 1.05  | 263.49 | 8287.93  | -488.53  | 84.02  | 32.33 | -103.50 | 488.53  | 0.07  |
| 8441.00  | 1.27  | 271.14 | 8382.91  | -488.61  | 82.10  | 32.33 | -103.50 | 488.61  | 0.28  |
| 8536.00  | 1.14  | 258.57 | 8477.89  | -488.77  | 80.13  | 32.33 | -103.50 | 488.77  | 0.31  |
| 8631.00  | 1.32  | 243.80 | 8572.87  | -489.44  | 78.22  | 32.33 | -103.50 | 489.44  | 0.38  |
| 8726.00  | 1.19  | 248.46 | 8667.85  | -490.29  | 76.32  | 32.33 | -103.50 | 490.29  | 0.17  |
| 8821.00  | 0.79  | 264.11 | 8762.83  | -490.72  | 74.75  | 32.33 | -103.50 | 490.72  | 0.50  |
| 8915.00  | 1.10  | 257.16 | 8856.82  | -490.99  | 73.22  | 32.33 | -103.50 | 490.99  | 0.35  |
| 9010.00  | 1.23  | 354.28 | 8951.81  | -490.17  | 72.23  | 32.33 | -103.50 | 490.17  | 1.84  |
| 9105.00  | 1.45  | 0.52   | 9046.78  | -487.96  | 72.14  | 32.33 | -103.50 | 487.96  | 0.28  |
| 9200.00  | 1.71  | 343.03 | 9141.74  | -485.40  | 71.74  | 32.33 | -103.50 | 485.40  | 0.57  |
| 9295.00  | 1.63  | 351.73 | 9236.70  | -482.71  | 71.13  | 32.33 | -103.50 | 482.71  | 0.28  |
| 9390.00  | 1.49  | 336.53 | 9331.67  | -480.24  | 70.45  | 32.33 | -103.50 | 480.24  | 0.46  |
| 9486.00  | 2.29  | 318.95 | 9427.62  | -477.65  | 68.69  | 32.33 | -103.50 | 477.65  | 1.02  |
| 9581.00  | 2.77  | 315.87 | 9522.52  | -474.57  | 65.84  | 32.33 | -103.50 | 474.57  | 0.52  |
| 9676.00  | 2.42  | 294.34 | 9617.43  | -472.09  | 62.42  | 32.33 | -103.50 | 472.09  | 1.08  |
| 9770.00  | 1.71  | 325.10 | 9711.37  | -470.12  | 59.81  | 32.33 | -103.50 | 470.12  | 1.37  |
| 9865.00  | 1.41  | 318.77 | 9806.33  | -468.08  | 58.23  | 32.33 | -103.50 | 468.08  | 0.36  |
| 9960.00  | 1.93  | 311.04 | 9901.29  | -466.15  | 56.25  | 32.33 | -103.50 | 466.15  | 0.60  |
| 10055.00 | 1.45  | 331.52 | 9996.25  | -464.05  | 54.47  | 32.33 | -103.50 | 464.05  | 0.80  |
| 10150.00 | 1.76  | 297.33 | 10091.22 | -462.32  | 52.60  | 32.33 | -103.50 | 462.32  | 1.04  |
| 10245.00 | 1.54  | 263.58 | 10186.18 | -461.79  | 50.04  | 32.33 | -103.50 | 461.79  | 1.03  |
| 10340.00 | 1.71  | 258.13 | 10281.14 | -462.23  | 47.38  | 32.33 | -103.50 | 462.23  | 0.24  |
| 10435.00 | 1.76  | 252.77 | 10376.10 | -462.95  | 44.60  | 32.33 | -103.50 | 462.95  | 0.18  |
| 10530.00 | 1.45  | 267.18 | 10471.06 | -463.44  | 42.01  | 32.33 | -103.50 | 463.44  | 0.53  |
| 10625.00 | 1.45  | 240.55 | 10566.02 | -464.28  | 39.12  | 32.33 | -103.50 | 464.28  | 0.55  |
| 10720.00 | 2.33  | 214.36 | 10661.98 | -466.90  | 36.56  | 32.33 | -103.50 | 466.90  | 1.06  |
| 10815.00 | 12.18 | 162.51 | 10757.94 | -478.08  | 38.48  | 32.33 | -103.50 | 478.08  | 11.47 |
| 10910.00 | 22.64 | 159.52 | 10853.90 | -504.57  | 47.82  | 32.33 | -103.50 | 504.57  | 11.16 |
| 11005.00 | 34.37 | 159.60 | 10949.86 | -546.98  | 63.62  | 32.33 | -103.50 | 546.98  | 12.35 |
| 11100.00 | 42.20 | 169.71 | 11045.82 | -603.65  | 78.70  | 32.33 | -103.50 | 603.65  | 10.53 |
| 11195.00 | 47.78 | 180.87 | 11141.78 | -670.37  | 83.88  | 32.33 | -103.50 | 670.37  | 10.16 |
| 11290.00 | 54.37 | 173.40 | 11237.74 | -744.04  | 87.79  | 32.33 | -103.50 | 744.04  | 9.24  |
| 11385.00 | 69.98 | 167.95 | 11333.70 | -826.60  | 101.64 | 32.33 | -103.50 | 826.60  | 17.19 |
| 11480.00 | 82.02 | 168.31 | 11429.66 | -916.64  | 120.56 | 32.33 | -103.50 | 916.64  | 12.68 |
| 11575.00 | 89.54 | 172.35 | 11525.62 | -1009.95 | 136.44 | 32.33 | -103.50 | 1009.95 | 8.98  |
| 11670.00 | 89.19 | 179.64 | 11621.58 | -1104.65 | 143.07 | 32.33 | -103.50 | 1104.65 | 7.68  |
| 11765.00 | 87.52 | 179.12 | 11717.54 | -1199.60 | 144.10 | 32.33 | -103.50 | 1199.60 | 1.84  |
| 11860.00 | 90.46 | 184.83 | 11813.50 | -1294.48 | 140.83 | 32.33 | -103.50 | 1294.48 | 6.76  |
| 11955.00 | 90.29 | 183.51 | 11909.46 | -1388.23 | 133.99 | 32.33 | -103.50 | 1388.23 | 1.42  |
| 12050.00 | 89.45 | 185.88 | 12005.42 | -1482.90 | 126.22 | 32.33 | -103.50 | 1482.90 | 2.65  |
| 12145.00 | 90.37 | 185.27 | 12101.38 | -1577.45 | 116.99 | 32.33 | -103.50 | 1577.45 | 1.16  |

|          |       |        |          |          |        |       |         |         |      |
|----------|-------|--------|----------|----------|--------|-------|---------|---------|------|
| 12284.00 | 92.66 | 187.55 | 11252.46 | -1671.81 | 106.39 | 32.33 | -103.50 | 1671.81 | 3.40 |
| 12379.00 | 93.45 | 187.99 | 11247.40 | -1765.81 | 93.56  | 32.33 | -103.50 | 1765.81 | 0.95 |
| 12474.00 | 90.37 | 192.48 | 11244.23 | -1859.21 | 76.70  | 32.33 | -103.50 | 1859.21 | 5.73 |
| 12569.00 | 89.01 | 191.77 | 11244.75 | -1952.08 | 56.74  | 32.33 | -103.50 | 1952.08 | 1.61 |
| 12664.00 | 87.25 | 190.19 | 11247.85 | -2045.29 | 38.66  | 32.33 | -103.50 | 2045.29 | 2.49 |
| 12759.00 | 86.86 | 186.06 | 11252.73 | -2139.19 | 25.25  | 32.33 | -103.50 | 2139.19 | 4.36 |
| 12853.00 | 88.70 | 181.40 | 11256.37 | -2232.89 | 19.14  | 32.33 | -103.50 | 2232.89 | 5.33 |
| 12948.00 | 90.68 | 179.38 | 11256.89 | -2327.88 | 18.50  | 32.33 | -103.50 | 2327.88 | 2.98 |
| 13043.00 | 91.87 | 178.33 | 11254.77 | -2422.83 | 20.40  | 32.33 | -103.50 | 2422.83 | 1.67 |
| 13138.00 | 92.79 | 175.25 | 11250.91 | -2517.59 | 25.71  | 32.33 | -103.50 | 2517.59 | 3.38 |
| 13233.00 | 90.55 | 173.84 | 11248.14 | -2612.11 | 34.74  | 32.33 | -103.50 | 2612.11 | 2.79 |
| 13328.00 | 88.48 | 173.23 | 11248.94 | -2706.50 | 45.43  | 32.33 | -103.50 | 2706.50 | 2.27 |
| 13423.00 | 90.81 | 173.58 | 11249.53 | -2800.86 | 56.34  | 32.33 | -103.50 | 2800.86 | 2.48 |
| 13518.00 | 90.11 | 176.22 | 11248.77 | -2895.47 | 64.79  | 32.33 | -103.50 | 2895.47 | 2.87 |
| 13613.00 | 92.18 | 180.26 | 11246.87 | -2990.39 | 67.70  | 32.33 | -103.50 | 2990.39 | 4.78 |
| 13739.00 | 92.66 | 181.58 | 11241.55 | -3116.25 | 65.68  | 32.33 | -103.50 | 3116.25 | 1.11 |
| 13834.00 | 91.25 | 183.42 | 11238.31 | -3211.10 | 61.54  | 32.33 | -103.50 | 3211.10 | 2.44 |
| 13928.00 | 90.59 | 182.54 | 11236.80 | -3304.96 | 56.65  | 32.33 | -103.50 | 3304.96 | 1.17 |
| 14023.00 | 90.64 | 183.69 | 11235.78 | -3399.81 | 51.49  | 32.33 | -103.50 | 3399.81 | 1.21 |
| 14118.00 | 90.29 | 183.77 | 11235.01 | -3494.61 | 45.31  | 32.33 | -103.50 | 3494.61 | 0.38 |
| 14213.00 | 89.98 | 182.63 | 11234.79 | -3589.46 | 40.01  | 32.33 | -103.50 | 3589.46 | 1.24 |
| 14307.00 | 89.49 | 181.23 | 11235.22 | -3683.40 | 36.84  | 32.33 | -103.50 | 3683.40 | 1.58 |
| 14402.00 | 88.88 | 180.17 | 11236.57 | -3778.38 | 35.68  | 32.33 | -103.50 | 3778.38 | 1.29 |
| 14497.00 | 87.82 | 181.23 | 11239.31 | -3873.33 | 34.52  | 32.33 | -103.50 | 3873.33 | 1.58 |
| 14591.00 | 88.04 | 183.07 | 11242.70 | -3967.20 | 31.00  | 32.33 | -103.50 | 3967.20 | 1.97 |
| 14686.00 | 88.40 | 183.60 | 11245.65 | -4062.00 | 25.48  | 32.32 | -103.50 | 4062.00 | 0.67 |
| 14781.00 | 89.41 | 184.57 | 11247.47 | -4156.73 | 18.71  | 32.32 | -103.50 | 4156.73 | 1.47 |
| 14876.00 | 90.90 | 184.13 | 11247.21 | -4251.46 | 11.50  | 32.32 | -103.50 | 4251.46 | 1.64 |
| 14971.00 | 89.71 | 182.37 | 11246.71 | -4346.30 | 6.12   | 32.32 | -103.50 | 4346.30 | 2.24 |
| 15066.00 | 88.70 | 180.35 | 11248.02 | -4441.26 | 3.86   | 32.32 | -103.50 | 4441.26 | 2.38 |
| 15161.00 | 90.29 | 179.64 | 11248.86 | -4536.25 | 3.87   | 32.32 | -103.50 | 4536.25 | 1.83 |
| 15255.00 | 90.29 | 178.85 | 11248.39 | -4630.24 | 5.11   | 32.32 | -103.50 | 4630.24 | 0.84 |
| 15350.00 | 90.11 | 178.94 | 11248.05 | -4725.22 | 6.94   | 32.32 | -103.50 | 4725.22 | 0.21 |
| 15445.00 | 89.89 | 179.12 | 11248.05 | -4820.21 | 8.55   | 32.32 | -103.50 | 4820.21 | 0.30 |
| 15540.00 | 89.41 | 179.03 | 11248.63 | -4915.19 | 10.09  | 32.32 | -103.50 | 4915.19 | 0.51 |
| 15635.00 | 89.01 | 178.68 | 11249.94 | -5010.16 | 11.98  | 32.32 | -103.50 | 5010.16 | 0.56 |
| 15730.00 | 88.53 | 178.33 | 11251.98 | -5105.11 | 14.46  | 32.32 | -103.50 | 5105.11 | 0.63 |
| 15825.00 | 88.09 | 178.24 | 11254.79 | -5200.02 | 17.30  | 32.32 | -103.50 | 5200.02 | 0.47 |
| 15920.00 | 87.69 | 178.24 | 11258.28 | -5294.92 | 20.22  | 32.32 | -103.50 | 5294.92 | 0.42 |
| 16015.00 | 87.82 | 178.06 | 11262.00 | -5389.79 | 23.28  | 32.32 | -103.50 | 5389.79 | 0.23 |
| 16109.00 | 87.56 | 177.89 | 11265.79 | -5483.66 | 26.60  | 32.32 | -103.50 | 5483.66 | 0.33 |
| 16204.00 | 87.12 | 177.62 | 11270.20 | -5578.48 | 30.32  | 32.32 | -103.50 | 5578.48 | 0.54 |
| 16299.00 | 86.24 | 176.04 | 11275.70 | -5673.17 | 35.56  | 32.32 | -103.50 | 5673.17 | 1.90 |
| 16394.00 | 87.82 | 176.66 | 11280.63 | -5767.85 | 41.60  | 32.32 | -103.50 | 5767.85 | 1.79 |
| 16489.00 | 87.43 | 177.27 | 11284.56 | -5862.63 | 46.63  | 32.32 | -103.50 | 5862.63 | 0.76 |
| 16584.00 | 87.30 | 178.15 | 11288.93 | -5957.46 | 50.42  | 32.32 | -103.50 | 5957.46 | 0.94 |
| 16679.00 | 89.76 | 180.44 | 11291.37 | -6052.41 | 51.59  | 32.32 | -103.50 | 6052.41 | 3.54 |

|          |       |        |          |          |       |       |         |         |      |
|----------|-------|--------|----------|----------|-------|-------|---------|---------|------|
| 16774.00 | 89.93 | 181.14 | 11291.62 | -6147.40 | 50.28 | 32.32 | -103.50 | 6147.40 | 0.76 |
| 16869.00 | 89.36 | 181.58 | 11292.21 | -6242.37 | 48.02 | 32.32 | -103.50 | 6242.37 | 0.76 |
| 16964.00 | 88.88 | 181.58 | 11293.67 | -6337.32 | 45.40 | 32.32 | -103.50 | 6337.32 | 0.51 |
| 17058.00 | 88.53 | 181.23 | 11295.80 | -6431.27 | 43.10 | 32.32 | -103.50 | 6431.27 | 0.53 |
| 17153.00 | 88.35 | 181.23 | 11298.38 | -6526.21 | 41.06 | 32.32 | -103.50 | 6526.21 | 0.19 |
| 17248.00 | 88.04 | 180.26 | 11301.38 | -6621.15 | 39.83 | 32.32 | -103.50 | 6621.15 | 1.07 |
| 17343.00 | 87.82 | 180.44 | 11304.81 | -6716.09 | 39.25 | 32.32 | -103.50 | 6716.09 | 0.30 |
| 17437.00 | 87.21 | 180.00 | 11308.88 | -6810.00 | 38.89 | 32.32 | -103.50 | 6810.00 | 0.80 |
| 17532.00 | 87.03 | 178.94 | 11313.66 | -6904.87 | 39.76 | 32.32 | -103.50 | 6904.87 | 1.13 |
| 17626.00 | 87.21 | 179.64 | 11318.38 | -6998.75 | 40.93 | 32.32 | -103.50 | 6998.75 | 0.77 |
| 17721.00 | 87.08 | 179.73 | 11323.11 | -7093.63 | 41.45 | 32.32 | -103.50 | 7093.63 | 0.17 |
| 17816.00 | 89.71 | 179.56 | 11325.77 | -7188.58 | 42.04 | 32.32 | -103.50 | 7188.58 | 2.77 |
| 17910.00 | 89.71 | 178.33 | 11326.25 | -7282.56 | 43.77 | 32.32 | -103.50 | 7282.56 | 1.31 |
| 18005.00 | 91.12 | 179.38 | 11325.56 | -7377.54 | 45.67 | 32.32 | -103.50 | 7377.54 | 1.85 |
| 18099.00 | 90.42 | 179.73 | 11324.30 | -7471.52 | 46.40 | 32.32 | -103.50 | 7471.52 | 0.83 |
| 18194.00 | 89.63 | 178.85 | 11324.25 | -7566.52 | 47.57 | 32.32 | -103.50 | 7566.52 | 1.24 |
| 18288.00 | 90.59 | 178.59 | 11324.07 | -7660.49 | 49.67 | 32.31 | -103.50 | 7660.49 | 1.06 |
| 18383.00 | 92.79 | 178.33 | 11321.27 | -7755.41 | 52.22 | 32.31 | -103.50 | 7755.41 | 2.33 |
| 18477.00 | 92.88 | 178.41 | 11316.62 | -7849.26 | 54.89 | 32.31 | -103.50 | 7849.26 | 0.13 |
| 18572.00 | 92.13 | 177.89 | 11312.47 | -7944.11 | 57.96 | 32.31 | -103.50 | 7944.11 | 0.96 |
| 18667.00 | 91.03 | 177.18 | 11309.85 | -8038.99 | 62.04 | 32.31 | -103.50 | 8038.99 | 1.38 |
| 18762.00 | 92.04 | 177.80 | 11307.31 | -8133.86 | 66.20 | 32.31 | -103.50 | 8133.86 | 1.25 |
| 18856.00 | 92.04 | 177.45 | 11303.96 | -8227.72 | 70.09 | 32.31 | -103.50 | 8227.72 | 0.37 |
| 18951.00 | 91.43 | 177.27 | 11301.08 | -8322.58 | 74.47 | 32.31 | -103.50 | 8322.58 | 0.67 |
| 19045.00 | 90.90 | 176.04 | 11299.17 | -8416.39 | 79.95 | 32.31 | -103.50 | 8416.39 | 1.42 |
| 19140.00 | 90.24 | 175.69 | 11298.23 | -8511.14 | 86.80 | 32.31 | -103.50 | 8511.14 | 0.79 |
| 19249.00 | 89.93 | 175.69 | 11298.07 | -8619.83 | 94.99 | 32.31 | -103.50 | 8619.83 | 0.28 |
| 19309.00 | 89.93 | 175.69 | 11298.14 | -8679.66 | 99.50 | 32.31 | -103.50 | 8679.66 | 0.00 |

All data are in feet unless otherwise stated. Directions and coordinates are relative to Grid North.  
Vertical depths are relative to GE+23'. Northings and Eastings are relative to Well.

The Dogleg Severity is in Degrees per 100 feet.

Vertical Section is from Slot and calculated along an Azimuth of 180.000° (Grid).

Coordinate System is NAD 1927 (NADCON CONUS) US State Plane 1927 (Exact solution), New Mexico East 3001  
Central meridian is -104.333°.

Grid Convergence at Surface is 0.445°.

Based upon Minimum Curvature type calculations, at a Measured Depth of 19309.00ft.,  
the Bottom Hole Displacement is 8680.23ft., in the Direction of 180.000° (Grid).

| NAD 27<br>Northing (usft) | NAD 27<br>Easting (usft) | NAD 83<br>Northing (usft) | NAD 83<br>Easting (usft) |
|---------------------------|--------------------------|---------------------------|--------------------------|
| 486921.38                 | 757139.49                | 486981.33                 | 798322.65                |
| 486922.02                 | 757139.28                | 486981.97                 | 798322.44                |
| 486922.73                 | 757139.05                | 486982.68                 | 798322.21                |
| 486923.52                 | 757138.14                | 486983.47                 | 798321.30                |
| 486923.42                 | 757134.55                | 486983.37                 | 798317.71                |
| 486922.88                 | 757131.20                | 486982.83                 | 798314.36                |
| 486921.70                 | 757126.92                | 486981.65                 | 798310.08                |
| 486919.91                 | 757121.73                | 486979.86                 | 798304.89                |
| 486917.46                 | 757116.84                | 486977.41                 | 798300.00                |
| 486914.65                 | 757112.49                | 486974.60                 | 798295.65                |
| 486913.49                 | 757109.39                | 486973.44                 | 798292.55                |
| 486913.90                 | 757107.26                | 486973.85                 | 798290.42                |
| 486914.34                 | 757104.64                | 486974.29                 | 798287.80                |
| 486914.77                 | 757102.09                | 486974.72                 | 798285.25                |
| 486914.95                 | 757099.50                | 486974.90                 | 798282.66                |
| 486914.51                 | 757096.78                | 486974.46                 | 798279.94                |
| 486913.50                 | 757097.00                | 486973.45                 | 798280.16                |
| 486910.36                 | 757101.75                | 486970.31                 | 798284.91                |
| 486903.62                 | 757109.66                | 486963.57                 | 798292.82                |
| 486893.64                 | 757119.15                | 486953.59                 | 798302.31                |
| 486882.40                 | 757129.32                | 486942.35                 | 798312.48                |
| 486870.73                 | 757140.32                | 486930.68                 | 798323.48                |
| 486855.93                 | 757152.16                | 486915.88                 | 798335.32                |
| 486837.85                 | 757164.37                | 486897.80                 | 798347.53                |
| 486818.35                 | 757176.67                | 486878.30                 | 798359.83                |
| 486797.35                 | 757188.20                | 486857.30                 | 798371.36                |
| 486775.11                 | 757198.82                | 486835.06                 | 798381.98                |
| 486751.50                 | 757208.75                | 486811.45                 | 798391.91                |
| 486727.66                 | 757218.51                | 486787.61                 | 798401.67                |
| 486703.67                 | 757229.29                | 486763.62                 | 798412.45                |
| 486677.96                 | 757238.25                | 486737.91                 | 798421.41                |
| 486651.47                 | 757243.68                | 486711.42                 | 798426.84                |

|           |           |           |           |
|-----------|-----------|-----------|-----------|
| 486625.58 | 757248.90 | 486685.53 | 798432.06 |
| 486600.40 | 757255.62 | 486660.35 | 798438.78 |
| 486576.35 | 757261.84 | 486636.30 | 798445.00 |
| 486553.58 | 757266.81 | 486613.53 | 798449.97 |
| 486533.98 | 757270.00 | 486593.93 | 798453.16 |
| 486518.29 | 757270.42 | 486578.24 | 798453.58 |
| 486505.84 | 757269.37 | 486565.79 | 798452.53 |
| 486496.97 | 757268.35 | 486556.92 | 798451.51 |
| 486490.33 | 757268.10 | 486550.28 | 798451.26 |
| 486484.09 | 757268.60 | 486544.04 | 798451.76 |
| 486477.96 | 757268.91 | 486537.91 | 798452.07 |
| 486472.62 | 757269.10 | 486532.57 | 798452.26 |
| 486467.79 | 757269.55 | 486527.74 | 798452.71 |
| 486463.01 | 757270.71 | 486522.96 | 798453.87 |
| 486458.33 | 757271.98 | 486518.28 | 798455.14 |
| 486454.63 | 757271.66 | 486514.58 | 798454.82 |
| 486451.52 | 757270.73 | 486511.47 | 798453.89 |
| 486445.22 | 757268.95 | 486505.17 | 798452.11 |
| 486442.57 | 757268.07 | 486502.52 | 798451.23 |
| 486439.66 | 757266.36 | 486499.61 | 798449.52 |
| 486436.73 | 757264.48 | 486496.68 | 798447.64 |
| 486433.85 | 757263.25 | 486493.80 | 798446.41 |
| 486432.40 | 757261.89 | 486492.35 | 798445.05 |
| 486431.82 | 757260.44 | 486491.77 | 798443.60 |
| 486431.13 | 757259.11 | 486491.08 | 798442.27 |
| 486430.93 | 757257.63 | 486490.88 | 798440.79 |
| 486431.02 | 757255.98 | 486490.97 | 798439.14 |
| 486430.96 | 757254.37 | 486490.91 | 798437.53 |
| 486431.00 | 757252.70 | 486490.95 | 798435.86 |
| 486431.12 | 757251.14 | 486491.07 | 798434.30 |
| 486431.09 | 757249.79 | 486491.04 | 798432.95 |
| 486430.83 | 757248.36 | 486490.78 | 798431.52 |
| 486430.51 | 757247.01 | 486490.46 | 798430.17 |
| 486430.44 | 757245.76 | 486490.39 | 798428.92 |
| 486430.69 | 757244.75 | 486490.64 | 798427.91 |
| 486431.12 | 757243.98 | 486491.07 | 798427.14 |
| 486431.65 | 757243.03 | 486491.60 | 798426.19 |
| 486431.93 | 757241.95 | 486491.88 | 798425.11 |
| 486431.90 | 757240.85 | 486491.85 | 798424.01 |
| 486431.87 | 757239.83 | 486491.82 | 798422.99 |
| 486431.62 | 757238.78 | 486491.57 | 798421.94 |
| 486431.13 | 757237.89 | 486491.08 | 798421.05 |
| 486430.76 | 757236.78 | 486490.71 | 798419.94 |
| 486430.60 | 757235.30 | 486490.55 | 798418.46 |
| 486431.08 | 757234.11 | 486491.03 | 798417.27 |
| 486432.34 | 757233.48 | 486492.29 | 798416.64 |
| 486433.31 | 757232.94 | 486493.26 | 798416.10 |

|           |           |           |           |
|-----------|-----------|-----------|-----------|
| 486433.49 | 757232.01 | 486493.44 | 798415.17 |
| 486433.38 | 757230.96 | 486493.33 | 798414.12 |
| 486433.32 | 757229.68 | 486493.27 | 798412.84 |
| 486433.25 | 757228.36 | 486493.20 | 798411.52 |
| 486433.21 | 757226.98 | 486493.16 | 798410.14 |
| 486433.09 | 757225.28 | 486493.04 | 798408.44 |
| 486432.85 | 757223.51 | 486492.80 | 798406.67 |
| 486432.77 | 757221.59 | 486492.72 | 798404.75 |
| 486432.61 | 757219.62 | 486492.56 | 798402.78 |
| 486431.94 | 757217.71 | 486491.89 | 798400.87 |
| 486431.09 | 757215.81 | 486491.04 | 798398.97 |
| 486430.66 | 757214.24 | 486490.61 | 798397.40 |
| 486430.39 | 757212.71 | 486490.34 | 798395.87 |
| 486431.21 | 757211.72 | 486491.16 | 798394.88 |
| 486433.42 | 757211.63 | 486493.37 | 798394.79 |
| 486435.98 | 757211.23 | 486495.93 | 798394.39 |
| 486438.67 | 757210.62 | 486498.62 | 798393.78 |
| 486441.14 | 757209.94 | 486501.09 | 798393.10 |
| 486443.73 | 757208.18 | 486503.68 | 798391.34 |
| 486446.81 | 757205.33 | 486506.76 | 798388.49 |
| 486449.29 | 757201.91 | 486509.24 | 798385.07 |
| 486451.26 | 757199.30 | 486511.21 | 798382.46 |
| 486453.30 | 757197.72 | 486513.25 | 798380.88 |
| 486455.23 | 757195.74 | 486515.18 | 798378.90 |
| 486457.33 | 757193.96 | 486517.28 | 798377.12 |
| 486459.06 | 757192.09 | 486519.01 | 798375.25 |
| 486459.59 | 757189.53 | 486519.54 | 798372.69 |
| 486459.15 | 757186.87 | 486519.10 | 798370.03 |
| 486458.43 | 757184.09 | 486518.38 | 798367.25 |
| 486457.94 | 757181.50 | 486517.89 | 798364.66 |
| 486457.10 | 757178.61 | 486517.05 | 798361.77 |
| 486454.48 | 757176.05 | 486514.43 | 798359.21 |
| 486443.30 | 757177.97 | 486503.25 | 798361.13 |
| 486416.81 | 757187.31 | 486476.76 | 798370.47 |
| 486374.40 | 757203.11 | 486434.35 | 798386.27 |
| 486317.73 | 757218.19 | 486377.68 | 798401.35 |
| 486251.01 | 757223.37 | 486310.96 | 798406.53 |
| 486177.34 | 757227.28 | 486237.29 | 798410.44 |
| 486094.78 | 757241.13 | 486154.73 | 798424.29 |
| 486004.74 | 757260.05 | 486064.69 | 798443.21 |
| 485911.43 | 757275.93 | 485971.38 | 798459.09 |
| 485816.73 | 757282.56 | 485876.68 | 798465.72 |
| 485721.78 | 757283.59 | 485781.73 | 798466.75 |
| 485626.90 | 757280.32 | 485686.85 | 798463.48 |
| 485533.15 | 757273.48 | 485593.10 | 798456.64 |
| 485438.48 | 757265.71 | 485498.43 | 798448.87 |
| 485343.93 | 757256.48 | 485403.88 | 798439.64 |

|           |           |           |           |
|-----------|-----------|-----------|-----------|
| 485249.57 | 757245.88 | 485309.52 | 798429.04 |
| 485155.57 | 757233.05 | 485215.52 | 798416.21 |
| 485062.17 | 757216.19 | 485122.12 | 798399.35 |
| 484969.30 | 757196.23 | 485029.25 | 798379.39 |
| 484876.09 | 757178.15 | 484936.04 | 798361.31 |
| 484782.19 | 757164.74 | 484842.14 | 798347.90 |
| 484688.49 | 757158.63 | 484748.44 | 798341.79 |
| 484593.50 | 757157.99 | 484653.45 | 798341.15 |
| 484498.55 | 757159.89 | 484558.50 | 798343.05 |
| 484403.79 | 757165.20 | 484463.74 | 798348.36 |
| 484309.27 | 757174.23 | 484369.22 | 798357.39 |
| 484214.88 | 757184.92 | 484274.83 | 798368.08 |
| 484120.52 | 757195.83 | 484180.47 | 798378.99 |
| 484025.91 | 757204.28 | 484085.86 | 798387.44 |
| 483930.99 | 757207.19 | 483990.94 | 798390.35 |
| 483805.13 | 757205.17 | 483865.08 | 798388.33 |
| 483710.28 | 757201.03 | 483770.23 | 798384.19 |
| 483616.42 | 757196.14 | 483676.37 | 798379.30 |
| 483521.57 | 757190.98 | 483581.52 | 798374.14 |
| 483426.77 | 757184.80 | 483486.72 | 798367.96 |
| 483331.92 | 757179.50 | 483391.87 | 798362.66 |
| 483237.98 | 757176.33 | 483297.93 | 798359.49 |
| 483143.00 | 757175.17 | 483202.95 | 798358.33 |
| 483048.05 | 757174.01 | 483108.00 | 798357.17 |
| 482954.18 | 757170.49 | 483014.13 | 798353.65 |
| 482859.38 | 757164.97 | 482919.33 | 798348.13 |
| 482764.65 | 757158.20 | 482824.60 | 798341.36 |
| 482669.92 | 757150.99 | 482729.87 | 798334.15 |
| 482575.08 | 757145.61 | 482635.03 | 798328.77 |
| 482480.12 | 757143.35 | 482540.07 | 798326.51 |
| 482385.13 | 757143.36 | 482445.08 | 798326.52 |
| 482291.14 | 757144.60 | 482351.09 | 798327.76 |
| 482196.16 | 757146.43 | 482256.11 | 798329.59 |
| 482101.17 | 757148.04 | 482161.12 | 798331.20 |
| 482006.19 | 757149.58 | 482066.14 | 798332.74 |
| 481911.22 | 757151.47 | 481971.17 | 798334.63 |
| 481816.27 | 757153.95 | 481876.22 | 798337.11 |
| 481721.36 | 757156.79 | 481781.31 | 798339.95 |
| 481626.46 | 757159.71 | 481686.41 | 798342.87 |
| 481531.59 | 757162.77 | 481591.54 | 798345.93 |
| 481437.72 | 757166.09 | 481497.67 | 798349.25 |
| 481342.90 | 757169.81 | 481402.85 | 798352.97 |
| 481248.21 | 757175.05 | 481308.16 | 798358.21 |
| 481153.53 | 757181.09 | 481213.48 | 798364.25 |
| 481058.75 | 757186.12 | 481118.70 | 798369.28 |
| 480963.92 | 757189.91 | 481023.87 | 798373.07 |
| 480868.97 | 757191.08 | 480928.92 | 798374.24 |

|           |           |           |           |
|-----------|-----------|-----------|-----------|
| 480773.98 | 757189.77 | 480833.93 | 798372.93 |
| 480679.01 | 757187.51 | 480738.96 | 798370.67 |
| 480584.06 | 757184.89 | 480644.01 | 798368.05 |
| 480490.11 | 757182.59 | 480550.06 | 798365.75 |
| 480395.17 | 757180.55 | 480455.12 | 798363.71 |
| 480300.23 | 757179.32 | 480360.18 | 798362.48 |
| 480205.29 | 757178.74 | 480265.24 | 798361.90 |
| 480111.38 | 757178.38 | 480171.33 | 798361.54 |
| 480016.51 | 757179.25 | 480076.46 | 798362.41 |
| 479922.63 | 757180.42 | 479982.58 | 798363.58 |
| 479827.75 | 757180.94 | 479887.70 | 798364.10 |
| 479732.80 | 757181.53 | 479792.75 | 798364.69 |
| 479638.82 | 757183.26 | 479698.77 | 798366.42 |
| 479543.84 | 757185.16 | 479603.79 | 798368.32 |
| 479449.86 | 757185.89 | 479509.81 | 798369.05 |
| 479354.86 | 757187.06 | 479414.81 | 798370.22 |
| 479260.89 | 757189.16 | 479320.84 | 798372.32 |
| 479165.97 | 757191.71 | 479225.92 | 798374.87 |
| 479072.12 | 757194.38 | 479132.07 | 798377.54 |
| 478977.27 | 757197.45 | 479037.22 | 798380.61 |
| 478882.39 | 757201.53 | 478942.34 | 798384.69 |
| 478787.52 | 757205.69 | 478847.47 | 798388.85 |
| 478693.66 | 757209.58 | 478753.61 | 798392.74 |
| 478598.80 | 757213.96 | 478658.75 | 798397.12 |
| 478504.99 | 757219.44 | 478564.94 | 798402.60 |
| 478410.24 | 757226.29 | 478470.19 | 798409.45 |
| 478301.55 | 757234.48 | 478361.50 | 798417.64 |
| 478241.72 | 757238.99 | 478301.67 | 798422.15 |

Submit 1 Copy To Appropriate District Office  
 District I – (575) 393-6161  
 1625 N. French Dr., Hobbs, NM 88240  
 District II – (575) 748-1283  
 811 S. First St., Artesia, NM 88210  
 District III – (505) 334-6178  
 1000 Rio Brazos Rd., Aztec, NM 87410  
 District IV – (505) 476-3460  
 1220 S. St. Francis Dr., Santa Fe, NM 87505

State of New Mexico  
 Energy, Minerals and Natural Resources

Form C-103  
 Revised July 18, 2013

OIL CONSERVATION DIVISION  
 1220 South St. Francis Dr.  
 Santa Fe, NM 87505

|   |
|---|
| WELL API NO.<br>30-025-48479  |
| 5. Indicate Type of Lease<br>STATE <input type="checkbox"/> FEE <input type="checkbox"/> FED <input type="checkbox"/> |
| 6. State Oil & Gas Lease No.  |
| 7. Lease Name or Unit Agreement Name<br>Bell Lake Unit North  |
| 8. Well Number<br>412H  |
| 9. OGRID Number<br>12361  |
| 10. Pool name or Wildcat<br>Ojo Chiso; Wolfcamp, Southwest  |

**SUNDRY NOTICES AND REPORTS ON WELLS**  
 (DO NOT USE THIS FORM FOR PROPOSALS TO DRILL OR TO DEEPEN OR PLUG BACK TO A DIFFERENT RESERVOIR. USE "APPLICATION FOR PERMIT" (FORM C-101) FOR SUCH PROPOSALS.)

1. Type of Well: Oil Well  Gas Well  Other

2. Name of Operator  
Kaiser-Francis Oil Company

3. Address of Operator  
P.O. Box 21468, Tulsa, OK 74121

4. Well Location  
 Unit Letter H : 1,770 feet from the North line and 175 feet from the East line  
 Section 6 Township 23S Range 34E NMPM County Lea

11. Elevation (Show whether DR, RKB, RT, GR, etc.)  
3,452' GR

12. Check Appropriate Box to Indicate Nature of Notice, Report or Other Data

| NOTICE OF INTENTION TO: |                          |                  |                          | SUBSEQUENT REPORT OF: |                                     |                 |                          |
|-------------------------|--------------------------|------------------|--------------------------|-----------------------|-------------------------------------|-----------------|--------------------------|
| PERFORM REMEDIAL WORK   | <input type="checkbox"/> | PLUG AND ABANDON | <input type="checkbox"/> | REMEDIAL WORK         | <input type="checkbox"/>            | ALTERING CASING | <input type="checkbox"/> |
| TEMPORARILY ABANDON     | <input type="checkbox"/> | CHANGE PLANS     | <input type="checkbox"/> | COMMENCE DRILLING OPS | <input type="checkbox"/>            | P AND A         | <input type="checkbox"/> |
| PULL OR ALTER CASING    | <input type="checkbox"/> | MULTIPLE COMPL   | <input type="checkbox"/> | CASING/CEMENT JOB     | <input type="checkbox"/>            |                 |                          |
| DOWNHOLE COMMINGLE      | <input type="checkbox"/> | CLOSED-LOOP      | <input type="checkbox"/> |                       |                                     |                 |                          |
| OTHER:                  | <input type="checkbox"/> |                  |                          | OTHER: Completion     | <input checked="" type="checkbox"/> |                 |                          |

13. Describe proposed or completed operations. (Clearly state all pertinent details, and give pertinent dates, including estimated date of starting any proposed work). SEE RULE 19.15.7.14 NMAC. For Multiple Completions: Attach wellbore diagram of proposed completion or recompletion.

9/22: Pressure test csg to 13,500#. Test annulus to 1,000#. Perf Stage 1: 18,981'-19,103' w/5 3-1/8" guns. BD perfs @ 5,700#. Establish injection into perfs: 5 BPM @ 5,800#. SD and isolate well. ISIP 4,925#, 5 min 4,707#, 10 min 4,682#, 15 min 4,668#.

9/22-10/22: Stage-Frac lateral 11,580'-19,103' in 43 stages w/ 428,568 bbls fluid carrying 21,374,820# sd.

10/22: Drilled out all plugs w/ 4.5" roller cone bit. TLTR: 440,714 bbls. SICP: 3,600#.

Spud Date:

Rig Release Date:

I hereby certify that the information above is true and complete to the best of my knowledge and belief.

SIGNATURE *Christina Opfer* TITLE Regulatory Manager DATE 11/3/2022  
 Type or print name Christina Opfer E-mail address [ChristinaO@kfoc.net](mailto:ChristinaO@kfoc.net) PHONE 918-491-4468

For State Use Only  
 APPROVED BY: \_\_\_\_\_ TITLE \_\_\_\_\_ DATE \_\_\_\_\_

Conditions of Approval (if any):

|   |                                  |   |                        |   |   |  |                                      |                         |                 |                      |
|---|----------------------------------|---|------------------------|---|---|--|--------------------------------------|-------------------------|-----------------|----------------------|
| Submit To Appropriate District Office<br>Two Copies<br>District I<br>1625 N. French Dr., Hobbs, NM 88240<br>District II<br>811 S. First St., Artesia, NM 88210<br>District III<br>1000 Rio Brazos Rd., Aztec, NM 87410<br>District IV<br>1220 S. St. Francis Dr., Santa Fe, NM 87505  |                                  | <b>State of New Mexico</b><br><b>Energy, Minerals and Natural Resources</b><br><br><b>Oil Conservation Division</b><br><b>1220 South St. Francis Dr.</b><br><b>Santa Fe, NM 87505</b> |                        |   |   | <b>Form C-105</b><br>Revised April 3, 2017                   |                                      |                         |                 |                      |
|   |                                  | 1. WELL API NO.<br>30-025-48479   |                        |   |   |  |                                      |                         |                 |                      |
|   |                                  | 2. Type of Lease<br><input type="checkbox"/> STATE <input type="checkbox"/> FEE <input checked="" type="checkbox"/> FED/INDIAN  |                        |   |   |  |                                      |                         |                 |                      |
|   |                                  | 3. State Oil & Gas Lease No.  |                        |   |   |  |                                      |                         |                 |                      |
| <b>WELL COMPLETION OR RECOMPLETION REPORT AND LOG</b>   |                                  |   |                        |   |   |  |                                      |                         |                 |                      |
| 4. Reason for filing:<br><br><input checked="" type="checkbox"/> COMPLETION REPORT (Fill in boxes #1 through #31 for State and Fee wells only)<br><br><input type="checkbox"/> C-144 CLOSURE ATTACHMENT (Fill in boxes #1 through #9, #15 Date Rig Released and #32 and/or #33; attach this and the plat to the C-144 closure report in accordance with 19.15.17.13.K NMAC) |                                  |   |                        |   |   | 5. Lease Name or Unit Agreement Name<br>Bell Lake Unit North |                                      |                         |                 |                      |
|   |                                  |   |                        |   |   | 6. Well Number:<br>412H                                      |                                      |                         |                 |                      |
| 7. Type of Completion:<br><input checked="" type="checkbox"/> NEW WELL <input type="checkbox"/> WORKOVER <input type="checkbox"/> DEEPENING <input type="checkbox"/> PLUGBACK <input type="checkbox"/> DIFFERENT RESERVOIR <input type="checkbox"/> OTHER _____   |                                  |   |                        |   |   |  |                                      |                         |                 |                      |
| 8. Name of Operator<br>Kaiser-Francis Oil Company   |                                  |   |                        |   |   | 9. OGRID<br>12361  |                                      |                         |                 |                      |
| 10. Address of Operator<br>P.O. Box 21468<br>Tulsa, OK 74121-1468   |                                  |   |                        |   |   | 11. Pool name or Wildcat<br>Ojo Chiso; Wolfcamp, Southwest   |                                      |                         |                 |                      |
| <b>12. Location</b>   | <b>Unit Ltr</b>                  | <b>Section</b>  | <b>Township</b>        | <b>Range</b>                                      | <b>Lot</b>                                      | <b>Feet from the</b>   | <b>N/S Line</b>                      | <b>Feet from the</b>    | <b>E/W Line</b> | <b>County</b>        |
| Surface:  | H                                | 6   | 23S                    | 34E   |   | 1,770  | N                                    | 175                     | E               | Lea                  |
| BH:   | P                                | 7   | 23S                    | 34E   |   | 112  | S                                    | 151                     | E               | Lea                  |
| 13. Date Spudded<br>8/30/21   | 14. Date T.D. Reached<br>9/10/21 | 15. Date Rig Released<br>9/11/21  |                        | 16. Date Completed (Ready to Produce)<br>10/18/22 |   | 17. Elevations (DF and RKB, RT, GR, etc.)<br>3,452' GR       |                                      |                         |                 |                      |
| 18. Total Measured Depth of Well<br>19,309' MD  |                                  | 19. Plug Back Measured Depth<br>19,135' MD  |                        | 20. Was Directional Survey Made?<br>YES           |   | 21. Type Electric and Other Logs Run<br>GR                   |                                      |                         |                 |                      |
| 22. Producing Interval(s), of this completion: Top-Bottom; Name<br>11,580'-19,103'; Wolfcamp  |                                  |   |                        |   |   |  |                                      |                         |                 |                      |
| <b>23. CASING RECORD (Report all strings set in well)</b>   |                                  |   |                        |   |   |  |                                      |                         |                 |                      |
| <b>CASING SIZE</b>  |                                  | <b>WEIGHT LB./FT.</b>   |                        | <b>DEPTH SET</b>                                  |   | <b>HOLE SIZE</b>   |                                      | <b>CEMENTING RECORD</b> |                 | <b>AMOUNT PULLED</b> |
| 13 3/8"   |                                  | 54.5#   |                        | 1,297'  |   | 17 1/2"  |                                      | 1,320 sx.               |                 |                      |
| 10 3/4"   |                                  | 45#   |                        | 4,985'  |   | 12 1/4"  |                                      | 815 sx.                 |                 |                      |
| 7 5/8"  |                                  | 29.7#   |                        | 10,681'   |   | 9 7/8"   |                                      | 825 sx.                 |                 |                      |
| 5 1/2"  |                                  | 23#   |                        | 19,279'   |   | 6 3/4"   |                                      | 1,260 sx.               |                 |                      |
| <b>24. LINER RECORD</b>   |                                  |   |                        |   | <b>25. TUBING RECORD</b>                        |  |                                      |                         |                 |                      |
| <b>SIZE</b>   | <b>TOP</b>                       | <b>BOTTOM</b>   | <b>SACKS CEMENT</b>    | <b>SCREEN</b>                                     | <b>SIZE</b>                                     | <b>DEPTH SET</b>   | <b>PACKER SET</b>                    |                         |                 |                      |
| none  | -                                | -   | -                      | -   | none  | -  | -                                    |                         | -               |                      |
| 26. Perforation record (interval, size, and number)<br>11,580'-19,103'; 0.41; 1,935 holes   |                                  |   |                        |   | 27. ACID, SHOT, FRACTURE, CEMENT, SQUEEZE, ETC. |  |                                      |                         |                 |                      |
|   |                                  |   |                        |   | <b>DEPTH INTERVAL</b>                           |  | <b>AMOUNT AND KIND MATERIAL USED</b> |                         |                 |                      |
|   |                                  |   |                        |   | 11,580'-19,103'                                 |  | 428,568 bbls fluid + 21,374,820# sd  |                         |                 |                      |
| <b>28. PRODUCTION</b>   |                                  |   |                        |   |   |  |                                      |                         |                 |                      |
| Date First Production<br>11/1/22  |                                  | Production Method (Flowing, gas lift, pumping - Size and type pump)<br>Flowing  |                        |   |   | Well Status (Prod. or Shut-in)<br>Prod                       |                                      |                         |                 |                      |
| Date of Test<br>11/1/22   | Hours Tested<br>24               | Choke Size<br>16/64"  | Prod'n For Test Period | Oil - Bbl<br>368                                  | Gas - MCF<br>806                                | Water - Bbl.<br>1,341  | Gas - Oil Ratio<br>2,190             |                         |                 |                      |
| Flow Tubing Press.  | Casing Pressure<br>3,990         | Calculated 24-Hour Rate   | Oil - Bbl.             | Gas - MCF   | Water - Bbl.                                    | Oil Gravity - API - (Corr.)<br>48                            |                                      |                         |                 |                      |
| 29. Disposition of Gas (Sold, used for fuel, vented, etc.)<br>Sold  |                                  |   |                        |   |   |  | 30. Test Witnessed By                |                         |                 |                      |
| 31. List Attachments<br>C-104 NW, C-102 As-Drilled w/HSU, C-103 Completion, Final Svy., WBD   |                                  |   |                        |   |   |  |                                      |                         |                 |                      |
| 32. If a temporary pit was used at the well, attach a plat with the location of the temporary pit.  |                                  |   |                        |   |   |  | 33. Rig Release Date: 9/11/21        |                         |                 |                      |
| 34. If an on-site burial was used at the well, report the exact location of the on-site burial:<br>Latitude _____ Longitude _____ NAD83   |                                  |   |                        |   |   |  |                                      |                         |                 |                      |
| <i>I hereby certify that the information shown on both sides of this form is true and complete to the best of my knowledge and belief</i>   |                                  |   |                        |   |   |  |                                      |                         |                 |                      |
| Signature <u>Christina Opfer</u>  |                                  | Printed Name <u>Christina Opfer</u>   |                        | Title <u>Regulatory Manager</u>                   |   | Date <u>11/14/2022</u>                                       |                                      |                         |                 |                      |
| E-mail Address <u>ChristinaO@kfoc.net</u>   |                                  |   |                        |   |   |  |                                      |                         |                 |                      |

# INSTRUCTIONS

This form is to be filed with the appropriate District Office of the Division not later than 20 days after the completion of any newly-drilled or deepened well and not later than 60 days after completion of closure. When submitted as a completion report, this shall be accompanied by one copy of all electrical and radio-activity logs run on the well and a summary of all special tests conducted, including drill stem tests. All depths reported shall be measured depths. In the case of directionally drilled wells, true vertical depths shall also be reported. For multiple completions, items 11, 12 and 26-31 shall be reported for each zone.

## INDICATE FORMATION TOPS IN CONFORMANCE WITH GEOGRAPHICAL SECTION OF STATE

| Southeastern New Mexico  |                        | Northwestern New Mexico  |                        |
|--------------------------|------------------------|--------------------------|------------------------|
| T. Anhy _____            | T. Canyon _____        | T. Ojo Alamo _____       | T. Penn A" _____       |
| T. Salt _____            | T. Strawn _____        | T. Kirtland _____        | T. Penn. "B" _____     |
| B. Salt _____            | T. Atoka _____         | T. Fruitland _____       | T. Penn. "C" _____     |
| T. Yates _____           | T. Miss _____          | T. Pictured Cliffs _____ | T. Penn. "D" _____     |
| T. 7 Rivers _____        | T. Devonian _____      | T. Cliff House _____     | T. Leadville _____     |
| T. Queen _____           | T. Silurian _____      | T. Menefee _____         | T. Madison _____       |
| T. Grayburg _____        | T. Montoya _____       | T. Point Lookout _____   | T. Elbert _____        |
| T. San Andres _____      | T. Simpson _____       | T. Mancos _____          | T. McCracken _____     |
| T. Glorieta _____        | T. McKee _____         | T. Gallup _____          | T. Ignacio Otzte _____ |
| T. Paddock _____         | T. Ellenburger _____   | Base<br>Greenhorn _____  | T. Granite _____       |
| T. Blinebry _____        | T. Gr. Wash _____      | T. Dakota _____          |                        |
| T. Tubb _____            | T. Delaware Sand _____ | T. Morrison _____        |                        |
| T. Drinkard _____        | T. Bone Springs _____  | T. Todilto _____         |                        |
| T. Abo _____             | T. _____               | T. Entrada _____         |                        |
| T. Wolfcamp _____        | T. _____               | T. Wingate _____         |                        |
| T. Penn _____            | T. _____               | T. Chinle _____          |                        |
| T. Cisco (Bough C) _____ | T. _____               | T. Permian _____         |                        |

OIL OR GAS SANDS OR  
ZONES

No. 1, from.....to.....  
 No. 2, from.....to.....  
 No. 3, from.....to.....  
 No. 4, from.....to.....

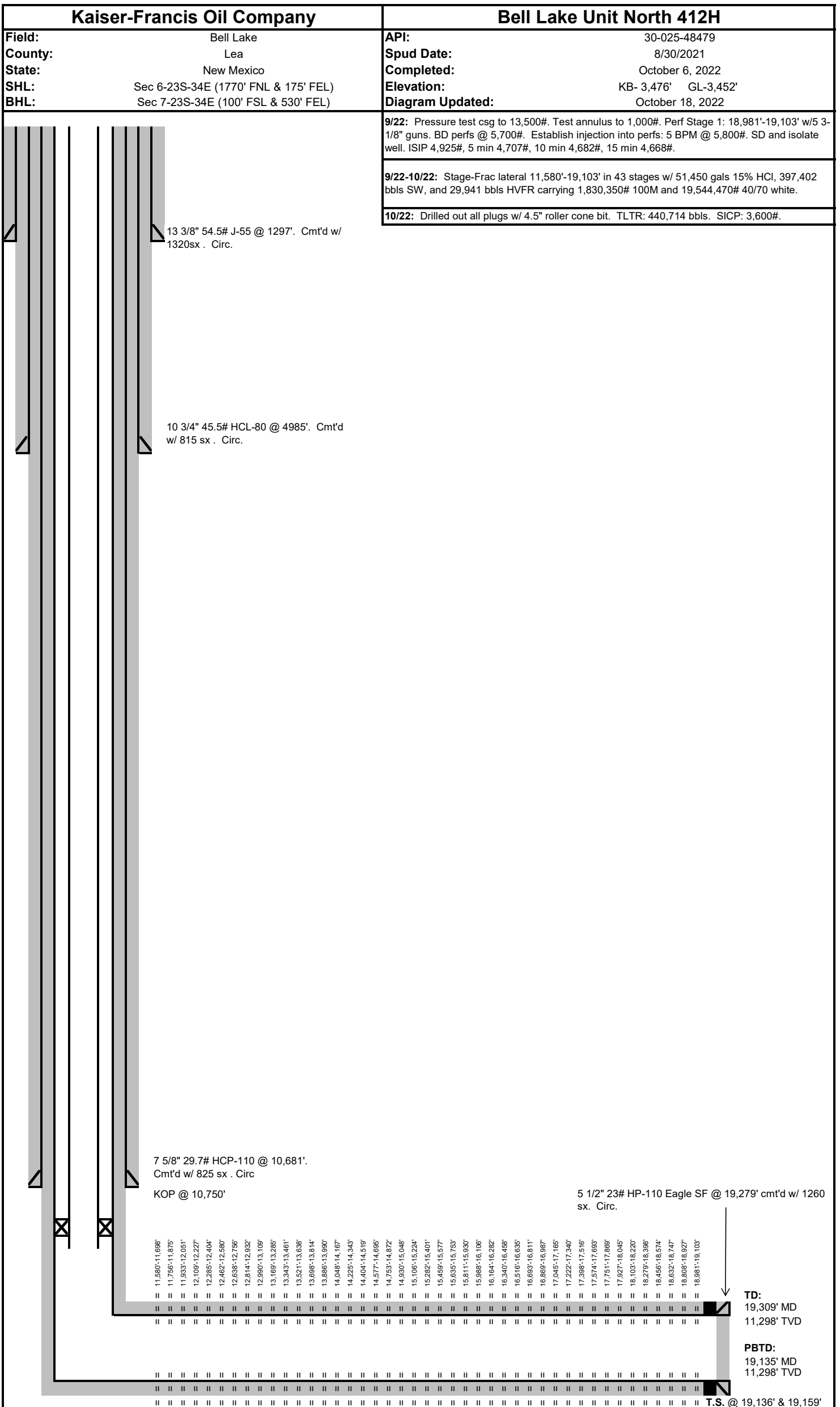
### IMPORTANT WATER SANDS

Include data on rate of water inflow and elevation to which water rose in hole.

No. 1, from.....to.....feet.....  
 No. 2, from.....to.....feet.....  
 No. 3, from.....to.....feet.....

## LITHOLOGY RECORD (Attach additional sheet if necessary)

| From  | To | Thickness<br>In Feet | Lithology                                 | From | To | Thickness<br>In Feet | Lithology |
|-------|----|----------------------|---|------|----|----------------------|-----------|
| MD    |    |                      |   |      |    |                      |           |
| 1256  |    |                      | Rustler, sand                             |      |    |                      |           |
| 1721  |    |                      | Salado, salt                              |      |    |                      |           |
| 4070  |    |                      | Top Salt, salt                            |      |    |                      |           |
| 4610  |    |                      | Base Salt, salt                           |      |    |                      |           |
| 4899  |    |                      | Delaware, sand                            |      |    |                      |           |
| 6066  |    |                      | Cherry Canyon, sand                       |      |    |                      |           |
| 7175  |    |                      | Brushy Canyon, sand                       |      |    |                      |           |
| 8506  |    |                      | Avalon, sand                              |      |    |                      |           |
| 9557  |    |                      | Bone Spring 1 <sup>st</sup> , sand        |      |    |                      |           |
| 9976  |    |                      | Bone Spring 2 <sup>nd</sup> , lime & sand |      |    |                      |           |
| 10529 |    |                      | Bone Spring 3 <sup>rd</sup> , lime & sand |      |    |                      |           |
| 11346 |    |                      | Wolfcamp, sand                            |      |    |                      |           |



|       |       |    |     |    |     |                 |   |
|-------|-------|----|-----|----|-----|-----------------|---|
| 11580 | 11698 | 11 | 580 | 11 | 698 | 11,580'-11,698' | 11,580'-11,11,756'-11,11,933'-12,12,109'-12,12,285'-12,12,462'-12,12,638'-12, |
| 11756 | 11875 | 11 | 756 | 11 | 875 | 11,756'-11,875' |   |
| 11933 | 12051 | 11 | 933 | 12 | 051 | 11,933'-12,051' |   |
| 12109 | 12227 | 12 | 109 | 12 | 227 | 12,109'-12,227' |   |
| 12285 | 12404 | 12 | 285 | 12 | 404 | 12,285'-12,404' |   |
| 12462 | 12580 | 12 | 462 | 12 | 580 | 12,462'-12,580' |   |
| 12638 | 12756 | 12 | 638 | 12 | 756 | 12,638'-12,756' |   |
| 12814 | 12932 | 12 | 814 | 12 | 932 | 12,814'-12,932' |   |
| 12990 | 13109 | 12 | 990 | 13 | 109 | 12,990'-13,109' |   |
| 13169 | 13285 | 13 | 169 | 13 | 285 | 13,169'-13,285' |   |
| 13343 | 13461 | 13 | 343 | 13 | 461 | 13,343'-13,461' |   |
| 13521 | 13638 | 13 | 521 | 13 | 638 | 13,521'-13,638' |   |
| 13698 | 13814 | 13 | 698 | 13 | 814 | 13,698'-13,814' |   |
| 13886 | 13990 | 13 | 886 | 13 | 990 | 13,886'-13,990' |   |
| 14048 | 14167 | 14 | 048 | 14 | 167 | 14,048'-14,167' |   |
| 14225 | 14343 | 14 | 225 | 14 | 343 | 14,225'-14,343' |   |
| 14404 | 14519 | 14 | 404 | 14 | 519 | 14,404'-14,519' |   |
| 14577 | 14695 | 14 | 577 | 14 | 695 | 14,577'-14,695' |   |
| 14753 | 14872 | 14 | 753 | 14 | 872 | 14,753'-14,872' |   |
| 14930 | 15048 | 14 | 930 | 15 | 048 | 14,930'-15,048' |   |
| 15106 | 15224 | 15 | 106 | 15 | 224 | 15,106'-15,224' |   |
| 15282 | 15401 | 15 | 282 | 15 | 401 | 15,282'-15,401' |   |
| 15459 | 15577 | 15 | 459 | 15 | 577 | 15,459'-15,577' |   |
| 15635 | 15753 | 15 | 635 | 15 | 753 | 15,635'-15,753' |   |
| 15811 | 15930 | 15 | 811 | 15 | 930 | 15,811'-15,930' |   |
| 15988 | 16106 | 15 | 988 | 16 | 106 | 15,988'-16,106' |   |
| 16164 | 16282 | 16 | 164 | 16 | 282 | 16,164'-16,282' |   |
| 16340 | 16458 | 16 | 340 | 16 | 458 | 16,340'-16,458' |   |
| 16516 | 16635 | 16 | 516 | 16 | 635 | 16,516'-16,635' |   |
| 16693 | 16811 | 16 | 693 | 16 | 811 | 16,693'-16,811' |   |
| 16869 | 16987 | 16 | 869 | 16 | 987 | 16,869'-16,987' |   |
| 17045 | 17165 | 17 | 045 | 17 | 165 | 17,045'-17,165' |   |
| 17222 | 17340 | 17 | 222 | 17 | 340 | 17,222'-17,340' |   |
| 17398 | 17516 | 17 | 398 | 17 | 516 | 17,398'-17,516' |   |

|       |       |    |     |    |     |                 |
|-------|-------|----|-----|----|-----|-----------------|
| 17574 | 17693 | 17 | 574 | 17 | 693 | 17,574'-17,693' |
| 17751 | 17869 | 17 | 751 | 17 | 869 | 17,751'-17,869' |
| 17927 | 18045 | 17 | 927 | 18 | 045 | 17,927'-18,045' |
| 18103 | 18220 | 18 | 103 | 18 | 220 | 18,103'-18,220' |
| 18279 | 18398 | 18 | 279 | 18 | 398 | 18,279'-18,398' |
| 18456 | 18574 | 18 | 456 | 18 | 574 | 18,456'-18,574' |
| 18632 | 18747 | 18 | 632 | 18 | 747 | 18,632'-18,747' |
| 18808 | 18927 | 18 | 808 | 18 | 927 | 18,808'-18,927' |
| 18981 | 19103 | 18 | 981 | 19 | 103 | 18,981'-19,103' |

12,814'-12, 12,990'-13, 13,169'-13, 13,343'-13, 13,521'-13, 13,698'-13, 13,886'-13, 14,048'-14, 14,225'-14, 14,404'-14, 14,577'-14, 14,753'-14, 14,930'-15,



15,106'-15, 15,282'-15, 15,459'-15, 15,635'-15, 15,811'-15, 15,988'-16, 16,164'-16, 16,340'-16, 16,516'-16, 16,693'-16, 16,869'-16, 17,045'-17, 17,222'-17,



17,398'-17,17,574'-17,17,751'-17,17,927'-18,18,103'-18,18,279'-18,18,456'-18,18,632'-18,18,808'-18,18,981'-19,103'

Sante Fe Main Office  
Phone: (505) 476-3441

General Information  
Phone: (505) 629-6116

Online Phone Directory  
<https://www.emnrd.nm.gov/ocd/contact-us>

**State of New Mexico**  
**Energy, Minerals and Natural Resources**  
**Oil Conservation Division**  
**1220 S. St Francis Dr.**  
**Santa Fe, NM 87505**

ACKNOWLEDGMENTS

Action 162461

**ACKNOWLEDGMENTS**

|   |  |
|---|--|
| Operator:<br>KAISER-FRANCIS OIL CO<br>PO Box 21468<br>Tulsa, OK 741211468 | OGRID:<br>12361                                    |
|   | Action Number:<br>162461                           |
|   | Action Type:<br>[C-104] Completion Packet (C-104C) |

**ACKNOWLEDGMENTS**

|                                     |  |
|-------------------------------------|--|
| <input checked="" type="checkbox"/> | I hereby certify that the required Water Use Report has been, or will be, submitted for this wells completion.     |
| <input checked="" type="checkbox"/> | I hereby certify that the required FracFocus disclosure has been, or will be, submitted for this wells completion. |

Sante Fe Main Office  
Phone: (505) 476-3441

General Information  
Phone: (505) 629-6116

Online Phone Directory  
<https://www.emnrd.nm.gov/ocd/contact-us>

**State of New Mexico**  
**Energy, Minerals and Natural Resources**  
**Oil Conservation Division**  
**1220 S. St Francis Dr.**  
**Santa Fe, NM 87505**

CONDITIONS

Action 162461

**CONDITIONS**

|   |  |
|---|--|
| Operator:<br>KAISER-FRANCIS OIL CO<br>PO Box 21468<br>Tulsa, OK 741211468 | OGRID:<br>12361                                    |
|   | Action Number:<br>162461                           |
|   | Action Type:<br>[C-104] Completion Packet (C-104C) |

**CONDITIONS**

| Created By  | Condition | Condition Date |
|-------------|-----------|----------------|
| raul.robles | None      | 5/1/2026       |