

Well Name: NEBU	Well Location: T31N / R7W / SEC 34 / SWNW / 36.858475 / -107.565598	County or Parish/State: SAN JUAN / NM
Well Number: 404	Type of Well: OTHER	Allottee or Tribe Name:
Lease Number: NMSF079003	Unit or CA Name: NEBU--FC	Unit or CA Number: NMNM78402D
US Well Number: 3004526901	Operator: SIMCOE LLC	

Notice of Intent

Sundry ID: 2908107

Type of Submission: Notice of Intent

Type of Action: Temporary Abandonment

Date Sundry Submitted: 04/24/2026

Time Sundry Submitted: 10:04

Date proposed operation will begin: 04/02/2025

Procedure Description: The NEBU 404 well is placed in TA status, effective date 04/02/2025. SIMCOE requests a 1-year TA status extension from 04/02/2026 to 04/02/2027. This well is a Fruitland Coal Pressure Observation Well (POW), SIMCOE conducts annual BHP surveys to help with reservoir management.

Surface Disturbance

Is any additional surface disturbance proposed?: No

Well Name: NEBU

Well Location: T31N / R7W / SEC 34 / SWNW / 36.858475 / -107.565598

County or Parish/State: SAN JUAN / NM

Well Number: 404

Type of Well: OTHER

Allottee or Tribe Name:

Lease Number: NMSF079003

Unit or CA Name: NEBU--FC

Unit or CA Number: NMNM78402D

US Well Number: 3004526901

Operator: SIMCOE LLC

Operator

I certify that the foregoing is true and correct. Title 18 U.S.C. Section 1001 and Title 43 U.S.C. Section 1212, make it a crime for any person knowingly and willfully to make to any department or agency of the United States any false, fictitious or fraudulent statements or representations as to any matter within its jurisdiction. Electronic submission of Sundry Notices through this system satisfies regulations requiring a

Operator Electronic Signature: CALE REDPATH

Signed on: APR 24, 2026 10:03 AM

Name: SIMCOE LLC

Title: Regulatory Analyst

Street Address: 1199 MAIN AVE SUITE 101

City: DURANGO State: CO

Phone: (970) 759-8799

Email address: CALE.REDPATH@MACHNR.COM

Field

Representative Name:

Street Address:

City: State: Zip:

Phone:

Email address:

BLM Point of Contact

BLM POC Name: KENNETH G RENNICK

BLM POC Title: Petroleum Engineer

BLM POC Phone: 5055647742

BLM POC Email Address: krennick@blm.gov

Disposition: Approved

Disposition Date: 04/27/2026

Signature: Kenneth Rennick



NEW MEXICO ENERGY, MINERALS and NATURAL RESOURCES DEPARTMENT

MECHANICAL INTEGRITY TEST REPORT (TA OR UIC)

Date of Test 4/2/25 Operator SimcoE API # 30-0 45-26901

Property Name NERU Well # 404 Location: Unit E Sec 34 Twn 3W Rge 7N

Land Type:

State _____
Federal
Private _____
Indian _____

Well Type:

Water Injection _____
Salt Water Disposal _____
Gas Injection _____
Producing Oil/Gas _____
Pressure observation

Temporarily Abandoned Well (Y/N): Expired TA Expires: _____

Casing Pres. 0 Tbg. SI Pres. N/A Max. Inj. Pres. _____
Bradenhead Pres. 5 Tbg. Inj. Pres. N/A
Tubing Pres. 0
Int. Casing Pres. N/A

Pressured annulus up to 565 psi. for 30 mins. Test passed/failed

REMARKS: Packer @ 2903' test to surface.

By Alan Iron
(Operator Representative)

Witness [Signature]
(NMOCD)

WSL

(Position)

Revised 02-11-02

NEW MEXICO ENERGY, MINERALS & NATURAL RESOURCES DEPARTMENT

OIL CONSERVATION DIVISION
AZTEC DISTRICT OFFICE
1000 RIO BRAZOS ROAD
AZTEC NM 87410
(505) 334-6178 FAX: (505) 334-6170
[http://emnr.state.nm.us/ocd/District III/3district.htm](http://emnr.state.nm.us/ocd/District%20III/3district.htm)

BRADENHEAD TEST REPORT

(submit 1 copy to above address)

Date of Test 4/2/25 Operator SIMCOE API #30-0 45-26901

Property Name NEBU Well No. 404 Location: Unit E Section 34 Township 31N Range 7W

Well Status (Shut-In or Producing) Initial PSI: Tubing 0 Intermediate N/A Casing 0 Bradenhead 5

OPEN BRADENHEAD AND INTERMEDIATE TO ATMOSPHERE INDIVIDUALLY FOR 15 MINUTES EACH

Testing TIME	PRESSURE					FLOW CHARACTERISTICS	
	Bradenhead			INTERM		BRADENHEAD	INTERMEDIATE
	BH	Int	Csg	Int	Csg		
5 min	0		0				
10 min	0		0				
15 min	0		0				
20 min	0		0				
25 min	0		0				
30 min	0		0				

Steady Flow	
Surges	
Down to Nothing	<input checked="" type="checkbox"/>
Nothing	
Gas	<input checked="" type="checkbox"/>
Gas & Water	
Water	

If bradenhead flowed water, check all of the descriptions that apply below:

CLEAR _____ FRESH _____ SALTY _____ SULFUR _____ BLACK _____

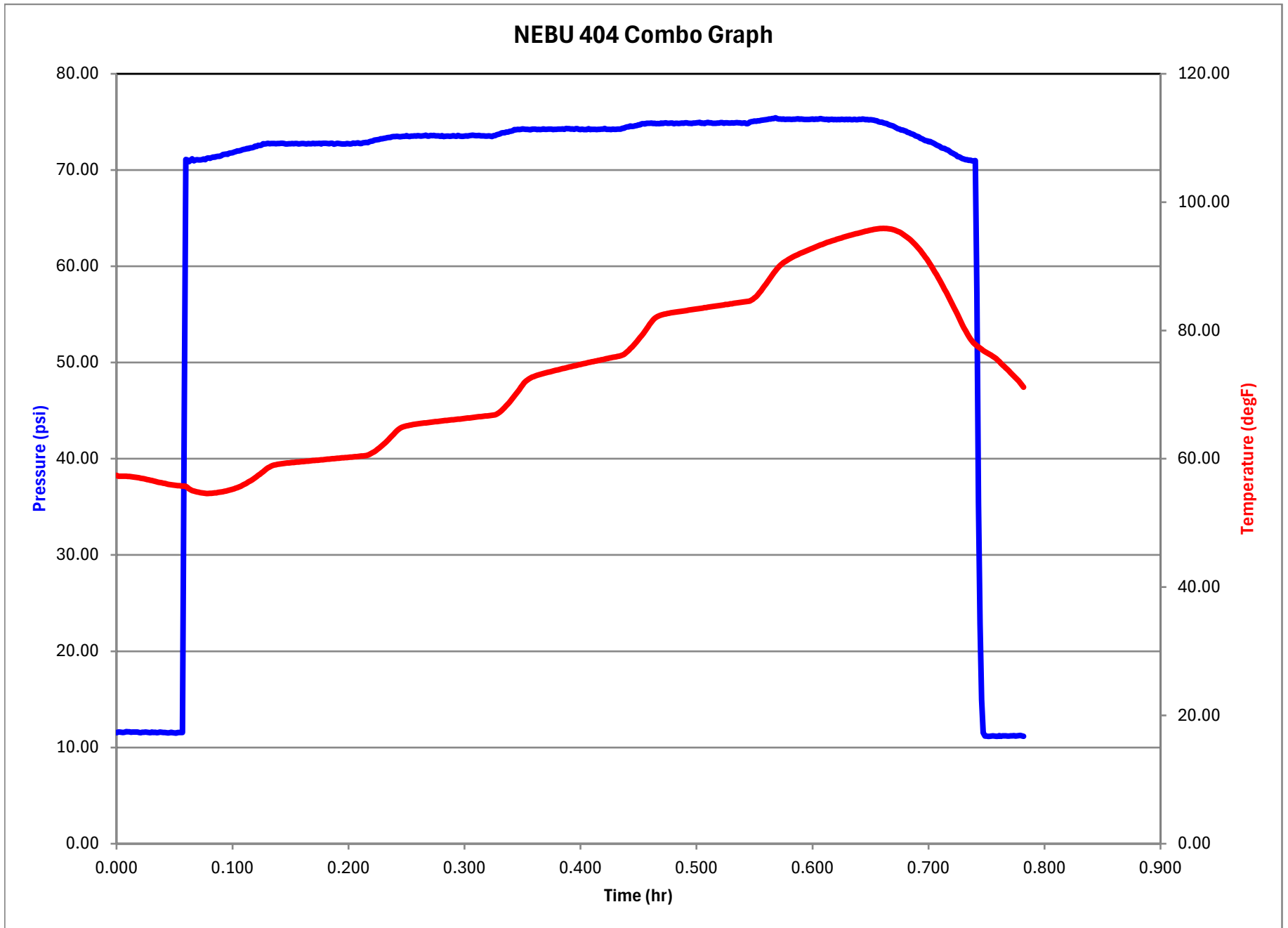
5 MINUTE SHUT-IN PRESSURE BRADENHEAD 0 INTERMEDIATE N/A

REMARKS: 5 PSI ON GAUGE, BLEW DOWN TO NOTHING IN 10 SEC. NOTHING THROUGHOUT TEST. 5 MIN SHUT IN = ZERO NOTHING WHEN OPENED.

By [Signature]
WSL
(Position)

Witness [Signature]

E-mail address _____



NEBU 404 DATA

Line No.	Date Time	Time	Pressure	Temperature	dPressure
	M/d/yyyy HH:mm:ss	hr	psi	degF	psi
1	4/3/2025 08:20:55	0.000	11.53	57.41	0.00
2	4/3/2025 08:21:00	0.001	11.60	57.27	0.07
3	4/3/2025 08:21:05	0.003	11.60	57.28	0.00
4	4/3/2025 08:21:10	0.004	11.57	57.27	-0.02
5	4/3/2025 08:21:15	0.006	11.57	57.27	-0.01
6	4/3/2025 08:21:20	0.007	11.58	57.27	0.01
7	4/3/2025 08:21:25	0.008	11.66	57.27	0.08
8	4/3/2025 08:21:30	0.010	11.64	57.26	-0.02
9	4/3/2025 08:21:35	0.011	11.64	57.24	0.00
10	4/3/2025 08:21:40	0.013	11.59	57.22	-0.05
11	4/3/2025 08:21:45	0.014	11.60	57.18	0.01
12	4/3/2025 08:21:50	0.015	11.59	57.15	-0.01
13	4/3/2025 08:21:55	0.017	11.60	57.11	0.01
14	4/3/2025 08:22:00	0.018	11.61	57.07	0.01
15	4/3/2025 08:22:05	0.019	11.56	57.02	-0.05
16	4/3/2025 08:22:10	0.021	11.54	56.98	-0.02
17	4/3/2025 08:22:15	0.022	11.58	56.93	0.03
18	4/3/2025 08:22:20	0.024	11.59	56.88	0.01
19	4/3/2025 08:22:25	0.025	11.61	56.83	0.02
20	4/3/2025 08:22:30	0.026	11.58	56.77	-0.03
21	4/3/2025 08:22:35	0.028	11.55	56.71	-0.02
22	4/3/2025 08:22:40	0.029	11.54	56.66	-0.02
23	4/3/2025 08:22:45	0.031	11.60	56.60	0.07
24	4/3/2025 08:22:50	0.032	11.55	56.54	-0.05
25	4/3/2025 08:22:55	0.033	11.58	56.47	0.03
26	4/3/2025 08:23:00	0.035	11.53	56.40	-0.05
27	4/3/2025 08:23:05	0.036	11.57	56.35	0.03
28	4/3/2025 08:23:10	0.038	11.60	56.30	0.03
29	4/3/2025 08:23:15	0.039	11.57	56.25	-0.03
30	4/3/2025 08:23:20	0.040	11.55	56.19	-0.02
31	4/3/2025 08:23:25	0.042	11.55	56.14	0.00
32	4/3/2025 08:23:30	0.043	11.54	56.08	-0.01
33	4/3/2025 08:23:35	0.044	11.52	56.03	-0.02
34	4/3/2025 08:23:40	0.046	11.54	55.98	0.02
35	4/3/2025 08:23:45	0.047	11.57	55.93	0.03
36	4/3/2025 08:23:50	0.049	11.53	55.90	-0.04
37	4/3/2025 08:23:55	0.050	11.51	55.87	-0.02
38	4/3/2025 08:24:00	0.051	11.49	55.84	-0.02
39	4/3/2025 08:24:05	0.053	11.55	55.82	0.06
40	4/3/2025 08:24:10	0.054	11.57	55.80	0.02
41	4/3/2025 08:24:15	0.056	11.55	55.78	-0.02

42	4/3/2025	08:24:20	0.057	11.55	55.75	0.00
43	4/3/2025	08:24:25	0.058	44.70	55.75	33.15
44	4/3/2025	08:24:30	0.060	71.11	55.72	26.41
45	4/3/2025	08:24:35	0.061	71.06	55.54	-0.05
46	4/3/2025	08:24:40	0.063	70.87	55.33	-0.19
47	4/3/2025	08:24:45	0.064	71.00	55.17	0.13
48	4/3/2025	08:24:50	0.065	71.16	55.05	0.16
49	4/3/2025	08:24:55	0.067	70.96	54.96	-0.20
50	4/3/2025	08:25:00	0.068	71.05	54.89	0.09
51	4/3/2025	08:25:05	0.069	71.07	54.83	0.02
52	4/3/2025	08:25:10	0.071	71.06	54.78	-0.01
53	4/3/2025	08:25:15	0.072	71.06	54.72	0.00
54	4/3/2025	08:25:20	0.074	71.07	54.68	0.02
55	4/3/2025	08:25:25	0.075	71.15	54.64	0.08
56	4/3/2025	08:25:30	0.076	71.08	54.61	-0.07
57	4/3/2025	08:25:35	0.078	71.21	54.59	0.14
58	4/3/2025	08:25:40	0.079	71.27	54.59	0.06
59	4/3/2025	08:25:45	0.081	71.23	54.61	-0.04
60	4/3/2025	08:25:50	0.082	71.28	54.62	0.05
61	4/3/2025	08:25:55	0.083	71.35	54.65	0.07
62	4/3/2025	08:26:00	0.085	71.33	54.68	-0.02
63	4/3/2025	08:26:05	0.086	71.39	54.70	0.06
64	4/3/2025	08:26:10	0.088	71.43	54.74	0.04
65	4/3/2025	08:26:15	0.089	71.44	54.78	0.00
66	4/3/2025	08:26:20	0.090	71.50	54.83	0.06
67	4/3/2025	08:26:25	0.092	71.61	54.87	0.11
68	4/3/2025	08:26:30	0.093	71.65	54.93	0.03
69	4/3/2025	08:26:35	0.094	71.67	54.98	0.02
70	4/3/2025	08:26:40	0.096	71.63	55.04	-0.04
71	4/3/2025	08:26:45	0.097	71.75	55.09	0.12
72	4/3/2025	08:26:50	0.099	71.77	55.17	0.02
73	4/3/2025	08:26:55	0.100	71.80	55.24	0.03
74	4/3/2025	08:27:00	0.101	71.88	55.32	0.07
75	4/3/2025	08:27:05	0.103	71.92	55.41	0.04
76	4/3/2025	08:27:10	0.104	71.99	55.51	0.07
77	4/3/2025	08:27:15	0.106	71.99	55.61	0.00
78	4/3/2025	08:27:20	0.107	72.03	55.72	0.04
79	4/3/2025	08:27:25	0.108	72.10	55.84	0.07
80	4/3/2025	08:27:30	0.110	72.15	55.97	0.05
81	4/3/2025	08:27:35	0.111	72.18	56.11	0.03
82	4/3/2025	08:27:40	0.113	72.23	56.25	0.05
83	4/3/2025	08:27:45	0.114	72.22	56.39	-0.01
84	4/3/2025	08:27:50	0.115	72.31	56.54	0.09
85	4/3/2025	08:27:55	0.117	72.30	56.70	-0.01

86	4/3/2025 08:28:00	0.118	72.35	56.87	0.05
87	4/3/2025 08:28:05	0.119	72.48	57.04	0.13
88	4/3/2025 08:28:10	0.121	72.46	57.22	-0.02
89	4/3/2025 08:28:15	0.122	72.58	57.41	0.12
90	4/3/2025 08:28:20	0.124	72.56	57.60	-0.02
91	4/3/2025 08:28:25	0.125	72.59	57.79	0.03
92	4/3/2025 08:28:30	0.126	72.73	57.99	0.13
93	4/3/2025 08:28:35	0.128	72.72	58.19	-0.01
94	4/3/2025 08:28:40	0.129	72.73	58.39	0.01
95	4/3/2025 08:28:45	0.131	72.77	58.58	0.05
96	4/3/2025 08:28:50	0.132	72.74	58.73	-0.03
97	4/3/2025 08:28:55	0.133	72.75	58.86	0.01
98	4/3/2025 08:29:00	0.135	72.76	58.95	0.00
99	4/3/2025 08:29:05	0.136	72.76	59.02	0.00
100	4/3/2025 08:29:10	0.138	72.73	59.08	-0.03
101	4/3/2025 08:29:15	0.139	72.76	59.13	0.03
102	4/3/2025 08:29:20	0.140	72.75	59.17	0.00
103	4/3/2025 08:29:25	0.142	72.78	59.21	0.02
104	4/3/2025 08:29:30	0.143	72.78	59.25	0.00
105	4/3/2025 08:29:35	0.144	72.75	59.28	-0.03
106	4/3/2025 08:29:40	0.146	72.72	59.30	-0.03
107	4/3/2025 08:29:45	0.147	72.72	59.33	0.00
108	4/3/2025 08:29:50	0.149	72.74	59.36	0.02
109	4/3/2025 08:29:55	0.150	72.74	59.39	0.00
110	4/3/2025 08:30:00	0.151	72.75	59.41	0.02
111	4/3/2025 08:30:05	0.153	72.73	59.43	-0.03
112	4/3/2025 08:30:10	0.154	72.76	59.46	0.03
113	4/3/2025 08:30:15	0.156	72.76	59.48	0.00
114	4/3/2025 08:30:20	0.157	72.72	59.50	-0.04
115	4/3/2025 08:30:25	0.158	72.73	59.52	0.01
116	4/3/2025 08:30:30	0.160	72.75	59.55	0.02
117	4/3/2025 08:30:35	0.161	72.75	59.57	0.00
118	4/3/2025 08:30:40	0.163	72.73	59.59	-0.01
119	4/3/2025 08:30:45	0.164	72.72	59.62	-0.01
120	4/3/2025 08:30:50	0.165	72.76	59.64	0.04
121	4/3/2025 08:30:55	0.167	72.74	59.67	-0.02
122	4/3/2025 08:31:00	0.168	72.73	59.69	-0.01
123	4/3/2025 08:31:05	0.169	72.77	59.72	0.04
124	4/3/2025 08:31:10	0.171	72.73	59.74	-0.04
125	4/3/2025 08:31:15	0.172	72.75	59.76	0.02
126	4/3/2025 08:31:20	0.174	72.76	59.78	0.01
127	4/3/2025 08:31:25	0.175	72.77	59.81	0.01
128	4/3/2025 08:31:30	0.176	72.70	59.83	-0.07
129	4/3/2025 08:31:35	0.178	72.78	59.85	0.08

130	4/3/2025	08:31:40	0.179	72.79	59.88	0.01
131	4/3/2025	08:31:45	0.181	72.79	59.90	0.00
132	4/3/2025	08:31:50	0.182	72.76	59.93	-0.03
133	4/3/2025	08:31:55	0.183	72.74	59.95	-0.02
134	4/3/2025	08:32:00	0.185	72.79	59.98	0.05
135	4/3/2025	08:32:05	0.186	72.78	60.00	-0.01
136	4/3/2025	08:32:10	0.188	72.68	60.02	-0.10
137	4/3/2025	08:32:15	0.189	72.74	60.04	0.06
138	4/3/2025	08:32:20	0.190	72.78	60.07	0.04
139	4/3/2025	08:32:25	0.192	72.76	60.09	-0.02
140	4/3/2025	08:32:30	0.193	72.72	60.11	-0.03
141	4/3/2025	08:32:35	0.194	72.72	60.14	-0.01
142	4/3/2025	08:32:40	0.196	72.70	60.16	-0.01
143	4/3/2025	08:32:45	0.197	72.72	60.18	0.02
144	4/3/2025	08:32:50	0.199	72.77	60.20	0.05
145	4/3/2025	08:32:55	0.200	72.73	60.23	-0.03
146	4/3/2025	08:33:00	0.201	72.72	60.25	-0.01
147	4/3/2025	08:33:05	0.203	72.74	60.27	0.02
148	4/3/2025	08:33:10	0.204	72.82	60.29	0.07
149	4/3/2025	08:33:15	0.206	72.76	60.32	-0.06
150	4/3/2025	08:33:20	0.207	72.80	60.34	0.04
151	4/3/2025	08:33:25	0.208	72.83	60.36	0.03
152	4/3/2025	08:33:30	0.210	72.76	60.39	-0.07
153	4/3/2025	08:33:35	0.211	72.77	60.42	0.01
154	4/3/2025	08:33:40	0.213	72.84	60.43	0.07
155	4/3/2025	08:33:45	0.214	72.84	60.46	0.00
156	4/3/2025	08:33:50	0.215	72.87	60.51	0.03
157	4/3/2025	08:33:55	0.217	72.86	60.59	-0.02
158	4/3/2025	08:34:00	0.218	72.95	60.68	0.09
159	4/3/2025	08:34:05	0.219	72.99	60.81	0.04
160	4/3/2025	08:34:10	0.221	73.02	60.95	0.03
161	4/3/2025	08:34:15	0.222	73.10	61.12	0.08
162	4/3/2025	08:34:20	0.224	73.13	61.29	0.02
163	4/3/2025	08:34:25	0.225	73.16	61.47	0.04
164	4/3/2025	08:34:30	0.226	73.18	61.67	0.02
165	4/3/2025	08:34:35	0.228	73.24	61.88	0.05
166	4/3/2025	08:34:40	0.229	73.24	62.09	0.00
167	4/3/2025	08:34:45	0.231	73.28	62.31	0.04
168	4/3/2025	08:34:50	0.232	73.33	62.54	0.04
169	4/3/2025	08:34:55	0.233	73.37	62.78	0.04
170	4/3/2025	08:35:00	0.235	73.39	63.04	0.02
171	4/3/2025	08:35:05	0.236	73.39	63.29	0.00
172	4/3/2025	08:35:10	0.238	73.45	63.56	0.06
173	4/3/2025	08:35:15	0.239	73.49	63.83	0.04

174	4/3/2025	08:35:20	0.240	73.49	64.11	0.00
175	4/3/2025	08:35:25	0.242	73.51	64.37	0.02
176	4/3/2025	08:35:30	0.243	73.49	64.58	-0.02
177	4/3/2025	08:35:35	0.244	73.45	64.75	-0.04
178	4/3/2025	08:35:40	0.246	73.47	64.88	0.03
179	4/3/2025	08:35:45	0.247	73.50	64.98	0.02
180	4/3/2025	08:35:50	0.249	73.50	65.06	0.00
181	4/3/2025	08:35:55	0.250	73.58	65.12	0.08
182	4/3/2025	08:36:00	0.251	73.50	65.18	-0.09
183	4/3/2025	08:36:05	0.253	73.49	65.23	0.00
184	4/3/2025	08:36:10	0.254	73.53	65.28	0.04
185	4/3/2025	08:36:15	0.256	73.52	65.32	-0.01
186	4/3/2025	08:36:20	0.257	73.56	65.37	0.04
187	4/3/2025	08:36:25	0.258	73.52	65.40	-0.04
188	4/3/2025	08:36:30	0.260	73.58	65.44	0.05
189	4/3/2025	08:36:35	0.261	73.54	65.47	-0.03
190	4/3/2025	08:36:40	0.263	73.53	65.51	-0.01
191	4/3/2025	08:36:45	0.264	73.56	65.54	0.03
192	4/3/2025	08:36:50	0.265	73.57	65.57	0.01
193	4/3/2025	08:36:55	0.267	73.61	65.60	0.04
194	4/3/2025	08:37:00	0.268	73.54	65.63	-0.08
195	4/3/2025	08:37:05	0.269	73.53	65.66	0.00
196	4/3/2025	08:37:10	0.271	73.59	65.69	0.06
197	4/3/2025	08:37:15	0.272	73.58	65.72	-0.01
198	4/3/2025	08:37:20	0.274	73.59	65.75	0.01
199	4/3/2025	08:37:25	0.275	73.56	65.78	-0.03
200	4/3/2025	08:37:30	0.276	73.55	65.81	-0.01
201	4/3/2025	08:37:35	0.278	73.55	65.84	-0.01
202	4/3/2025	08:37:40	0.279	73.51	65.86	-0.04
203	4/3/2025	08:37:45	0.281	73.57	65.90	0.07
204	4/3/2025	08:37:50	0.282	73.48	65.92	-0.10
205	4/3/2025	08:37:55	0.283	73.51	65.95	0.04
206	4/3/2025	08:38:00	0.285	73.53	65.98	0.02
207	4/3/2025	08:38:05	0.286	73.54	66.00	0.01
208	4/3/2025	08:38:10	0.288	73.51	66.03	-0.03
209	4/3/2025	08:38:15	0.289	73.53	66.06	0.02
210	4/3/2025	08:38:20	0.290	73.58	66.08	0.05
211	4/3/2025	08:38:25	0.292	73.52	66.11	-0.06
212	4/3/2025	08:38:30	0.293	73.51	66.14	-0.01
213	4/3/2025	08:38:35	0.294	73.60	66.17	0.09
214	4/3/2025	08:38:40	0.296	73.54	66.20	-0.06
215	4/3/2025	08:38:45	0.297	73.50	66.23	-0.03
216	4/3/2025	08:38:50	0.299	73.51	66.26	0.01
217	4/3/2025	08:38:55	0.300	73.54	66.28	0.02

218	4/3/2025	08:39:00	0.301	73.55	66.31	0.01
219	4/3/2025	08:39:05	0.303	73.53	66.34	-0.02
220	4/3/2025	08:39:10	0.304	73.57	66.37	0.04
221	4/3/2025	08:39:15	0.306	73.60	66.40	0.03
222	4/3/2025	08:39:20	0.307	73.62	66.42	0.02
223	4/3/2025	08:39:25	0.308	73.60	66.45	-0.02
224	4/3/2025	08:39:30	0.310	73.57	66.48	-0.03
225	4/3/2025	08:39:35	0.311	73.57	66.52	0.00
226	4/3/2025	08:39:40	0.313	73.60	66.55	0.03
227	4/3/2025	08:39:45	0.314	73.56	66.57	-0.05
228	4/3/2025	08:39:50	0.315	73.56	66.60	0.00
229	4/3/2025	08:39:55	0.317	73.55	66.63	-0.01
230	4/3/2025	08:40:00	0.318	73.53	66.66	-0.02
231	4/3/2025	08:40:05	0.319	73.52	66.68	-0.01
232	4/3/2025	08:40:10	0.321	73.55	66.71	0.02
233	4/3/2025	08:40:15	0.322	73.52	66.74	-0.03
234	4/3/2025	08:40:20	0.324	73.47	66.76	-0.05
235	4/3/2025	08:40:25	0.325	73.58	66.79	0.11
236	4/3/2025	08:40:30	0.326	73.57	66.85	-0.01
237	4/3/2025	08:40:35	0.328	73.66	66.96	0.09
238	4/3/2025	08:40:40	0.329	73.72	67.11	0.06
239	4/3/2025	08:40:45	0.331	73.75	67.29	0.03
240	4/3/2025	08:40:50	0.332	73.84	67.52	0.09
241	4/3/2025	08:40:55	0.333	73.88	67.75	0.03
242	4/3/2025	08:41:00	0.335	73.87	68.01	-0.01
243	4/3/2025	08:41:05	0.336	73.95	68.28	0.08
244	4/3/2025	08:41:10	0.338	73.95	68.56	0.00
245	4/3/2025	08:41:15	0.339	74.01	68.85	0.06
246	4/3/2025	08:41:20	0.340	74.05	69.15	0.04
247	4/3/2025	08:41:25	0.342	74.10	69.46	0.05
248	4/3/2025	08:41:30	0.343	74.20	69.78	0.10
249	4/3/2025	08:41:35	0.344	74.19	70.10	-0.01
250	4/3/2025	08:41:40	0.346	74.23	70.45	0.04
251	4/3/2025	08:41:45	0.347	74.20	70.79	-0.03
252	4/3/2025	08:41:50	0.349	74.24	71.14	0.03
253	4/3/2025	08:41:55	0.350	74.27	71.48	0.03
254	4/3/2025	08:42:00	0.351	74.24	71.80	-0.02
255	4/3/2025	08:42:05	0.353	74.22	72.07	-0.02
256	4/3/2025	08:42:10	0.354	74.24	72.29	0.02
257	4/3/2025	08:42:15	0.356	74.19	72.46	-0.04
258	4/3/2025	08:42:20	0.357	74.18	72.60	-0.01
259	4/3/2025	08:42:25	0.358	74.26	72.72	0.07
260	4/3/2025	08:42:30	0.360	74.24	72.82	-0.01
261	4/3/2025	08:42:35	0.361	74.25	72.91	0.01

262	4/3/2025	08:42:40	0.363	74.20	73.00	-0.04
263	4/3/2025	08:42:45	0.364	74.22	73.08	0.01
264	4/3/2025	08:42:50	0.365	74.21	73.15	-0.01
265	4/3/2025	08:42:55	0.367	74.23	73.22	0.01
266	4/3/2025	08:43:00	0.368	74.27	73.30	0.05
267	4/3/2025	08:43:05	0.369	74.24	73.36	-0.04
268	4/3/2025	08:43:10	0.371	74.22	73.43	-0.02
269	4/3/2025	08:43:15	0.372	74.26	73.49	0.04
270	4/3/2025	08:43:20	0.374	74.25	73.55	0.00
271	4/3/2025	08:43:25	0.375	74.25	73.62	0.00
272	4/3/2025	08:43:30	0.376	74.20	73.68	-0.06
273	4/3/2025	08:43:35	0.378	74.23	73.74	0.03
274	4/3/2025	08:43:40	0.379	74.22	73.81	0.00
275	4/3/2025	08:43:45	0.381	74.26	73.86	0.04
276	4/3/2025	08:43:50	0.382	74.26	73.92	0.00
277	4/3/2025	08:43:55	0.383	74.25	73.98	-0.01
278	4/3/2025	08:44:00	0.385	74.29	74.05	0.04
279	4/3/2025	08:44:05	0.386	74.23	74.11	-0.06
280	4/3/2025	08:44:10	0.388	74.33	74.16	0.10
281	4/3/2025	08:44:15	0.389	74.31	74.23	-0.02
282	4/3/2025	08:44:20	0.390	74.29	74.30	-0.01
283	4/3/2025	08:44:25	0.392	74.25	74.36	-0.04
284	4/3/2025	08:44:30	0.393	74.27	74.41	0.02
285	4/3/2025	08:44:35	0.394	74.22	74.48	-0.04
286	4/3/2025	08:44:40	0.396	74.29	74.54	0.07
287	4/3/2025	08:44:45	0.397	74.29	74.59	0.00
288	4/3/2025	08:44:50	0.399	74.23	74.66	-0.06
289	4/3/2025	08:44:55	0.400	74.21	74.71	-0.02
290	4/3/2025	08:45:00	0.401	74.24	74.77	0.03
291	4/3/2025	08:45:05	0.403	74.21	74.82	-0.04
292	4/3/2025	08:45:10	0.404	74.19	74.88	-0.01
293	4/3/2025	08:45:15	0.406	74.21	74.94	0.01
294	4/3/2025	08:45:20	0.407	74.29	74.99	0.09
295	4/3/2025	08:45:25	0.408	74.20	75.05	-0.10
296	4/3/2025	08:45:30	0.410	74.22	75.10	0.03
297	4/3/2025	08:45:35	0.411	74.23	75.15	0.00
298	4/3/2025	08:45:40	0.413	74.22	75.21	0.00
299	4/3/2025	08:45:45	0.414	74.20	75.27	-0.02
300	4/3/2025	08:45:50	0.415	74.24	75.32	0.04
301	4/3/2025	08:45:55	0.417	74.23	75.37	-0.01
302	4/3/2025	08:46:00	0.418	74.25	75.42	0.02
303	4/3/2025	08:46:05	0.419	74.26	75.48	0.01
304	4/3/2025	08:46:10	0.421	74.31	75.54	0.05
305	4/3/2025	08:46:15	0.422	74.24	75.59	-0.07

306	4/3/2025	08:46:20	0.424	74.23	75.65	0.00
307	4/3/2025	08:46:25	0.425	74.22	75.70	-0.01
308	4/3/2025	08:46:30	0.426	74.20	75.75	-0.03
309	4/3/2025	08:46:35	0.428	74.25	75.80	0.05
310	4/3/2025	08:46:40	0.429	74.23	75.85	-0.02
311	4/3/2025	08:46:45	0.431	74.24	75.90	0.00
312	4/3/2025	08:46:50	0.432	74.24	75.95	0.01
313	4/3/2025	08:46:55	0.433	74.24	76.00	0.00
314	4/3/2025	08:47:00	0.435	74.24	76.06	0.00
315	4/3/2025	08:47:05	0.436	74.35	76.15	0.10
316	4/3/2025	08:47:10	0.438	74.34	76.28	0.00
317	4/3/2025	08:47:15	0.439	74.44	76.47	0.10
318	4/3/2025	08:47:20	0.440	74.49	76.67	0.06
319	4/3/2025	08:47:25	0.442	74.48	76.91	-0.01
320	4/3/2025	08:47:30	0.443	74.57	77.17	0.09
321	4/3/2025	08:47:35	0.444	74.53	77.44	-0.04
322	4/3/2025	08:47:40	0.446	74.57	77.71	0.04
323	4/3/2025	08:47:45	0.447	74.61	77.98	0.04
324	4/3/2025	08:47:50	0.449	74.63	78.28	0.02
325	4/3/2025	08:47:55	0.450	74.70	78.58	0.07
326	4/3/2025	08:48:00	0.451	74.70	78.88	0.00
327	4/3/2025	08:48:05	0.453	74.80	79.21	0.10
328	4/3/2025	08:48:10	0.454	74.82	79.53	0.02
329	4/3/2025	08:48:15	0.456	74.79	79.87	-0.02
330	4/3/2025	08:48:20	0.457	74.85	80.22	0.06
331	4/3/2025	08:48:25	0.458	74.86	80.59	0.01
332	4/3/2025	08:48:30	0.460	74.86	80.96	0.00
333	4/3/2025	08:48:35	0.461	74.88	81.31	0.02
334	4/3/2025	08:48:40	0.463	74.83	81.62	-0.05
335	4/3/2025	08:48:45	0.464	74.86	81.86	0.03
336	4/3/2025	08:48:50	0.465	74.81	82.05	-0.04
337	4/3/2025	08:48:55	0.467	74.83	82.18	0.01
338	4/3/2025	08:49:00	0.468	74.82	82.30	-0.01
339	4/3/2025	08:49:05	0.469	74.88	82.39	0.06
340	4/3/2025	08:49:10	0.471	74.83	82.47	-0.05
341	4/3/2025	08:49:15	0.472	74.89	82.53	0.06
342	4/3/2025	08:49:20	0.474	74.90	82.59	0.02
343	4/3/2025	08:49:25	0.475	74.87	82.64	-0.04
344	4/3/2025	08:49:30	0.476	74.85	82.69	-0.02
345	4/3/2025	08:49:35	0.478	74.89	82.74	0.04
346	4/3/2025	08:49:40	0.479	74.88	82.78	-0.01
347	4/3/2025	08:49:45	0.481	74.81	82.82	-0.07
348	4/3/2025	08:49:50	0.482	74.87	82.86	0.06
349	4/3/2025	08:49:55	0.483	74.85	82.90	-0.02

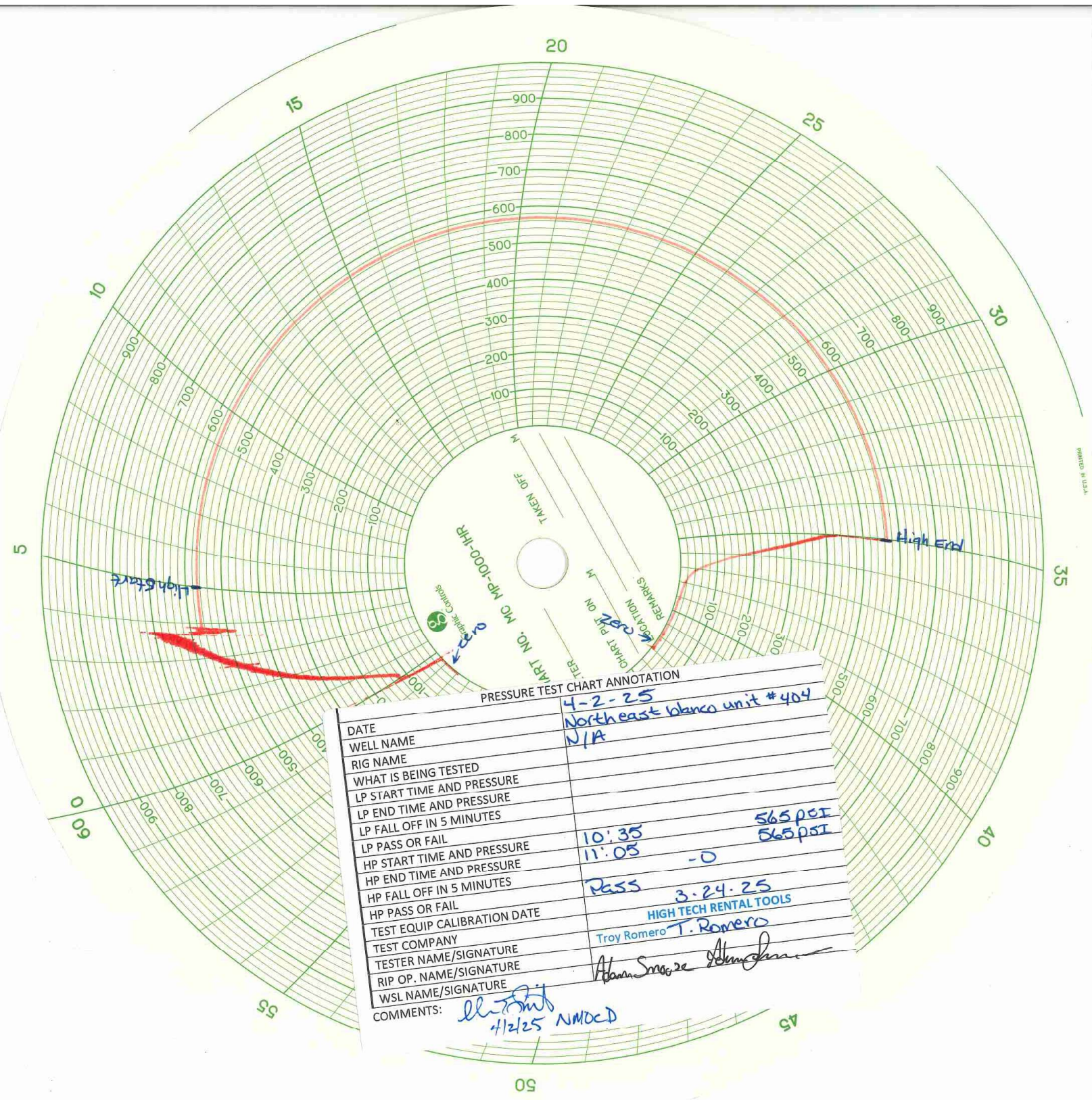
350	4/3/2025 08:50:00	0.485	74.83	82.93	-0.02
351	4/3/2025 08:50:05	0.486	74.86	82.97	0.02
352	4/3/2025 08:50:10	0.488	74.88	83.00	0.02
353	4/3/2025 08:50:15	0.489	74.86	83.04	-0.02
354	4/3/2025 08:50:20	0.490	74.91	83.08	0.05
355	4/3/2025 08:50:25	0.492	74.91	83.11	0.00
356	4/3/2025 08:50:30	0.493	74.87	83.16	-0.04
357	4/3/2025 08:50:35	0.494	74.87	83.20	0.00
358	4/3/2025 08:50:40	0.496	74.83	83.24	-0.04
359	4/3/2025 08:50:45	0.497	74.89	83.27	0.06
360	4/3/2025 08:50:50	0.499	74.89	83.31	0.00
361	4/3/2025 08:50:55	0.500	74.91	83.35	0.02
362	4/3/2025 08:51:00	0.501	74.92	83.39	0.01
363	4/3/2025 08:51:05	0.503	74.96	83.43	0.04
364	4/3/2025 08:51:10	0.504	74.86	83.46	-0.10
365	4/3/2025 08:51:15	0.506	74.88	83.50	0.02
366	4/3/2025 08:51:20	0.507	74.85	83.54	-0.03
367	4/3/2025 08:51:25	0.508	74.91	83.58	0.06
368	4/3/2025 08:51:30	0.510	74.94	83.62	0.04
369	4/3/2025 08:51:35	0.511	74.90	83.65	-0.05
370	4/3/2025 08:51:40	0.513	74.90	83.70	0.00
371	4/3/2025 08:51:45	0.514	74.87	83.73	-0.03
372	4/3/2025 08:51:50	0.515	74.86	83.76	-0.01
373	4/3/2025 08:51:55	0.517	74.85	83.81	0.00
374	4/3/2025 08:52:00	0.518	74.88	83.84	0.03
375	4/3/2025 08:52:05	0.519	74.88	83.88	-0.01
376	4/3/2025 08:52:10	0.521	74.94	83.92	0.06
377	4/3/2025 08:52:15	0.522	74.92	83.96	-0.02
378	4/3/2025 08:52:20	0.524	74.86	83.99	-0.06
379	4/3/2025 08:52:25	0.525	74.92	84.03	0.06
380	4/3/2025 08:52:30	0.526	74.90	84.06	-0.01
381	4/3/2025 08:52:35	0.528	74.89	84.10	-0.02
382	4/3/2025 08:52:40	0.529	74.88	84.14	0.00
383	4/3/2025 08:52:45	0.531	74.90	84.17	0.01
384	4/3/2025 08:52:50	0.532	74.89	84.21	0.00
385	4/3/2025 08:52:55	0.533	74.90	84.25	0.01
386	4/3/2025 08:53:00	0.535	74.93	84.28	0.03
387	4/3/2025 08:53:05	0.536	74.92	84.32	-0.02
388	4/3/2025 08:53:10	0.538	74.91	84.35	-0.01
389	4/3/2025 08:53:15	0.539	74.85	84.39	-0.06
390	4/3/2025 08:53:20	0.540	74.88	84.43	0.03
391	4/3/2025 08:53:25	0.542	74.90	84.47	0.02
392	4/3/2025 08:53:30	0.543	74.82	84.51	-0.07
393	4/3/2025 08:53:35	0.544	74.84	84.54	0.02

394	4/3/2025	08:53:40	0.546	74.97	84.59	0.13
395	4/3/2025	08:53:45	0.547	75.02	84.70	0.05
396	4/3/2025	08:53:50	0.549	75.05	84.85	0.03
397	4/3/2025	08:53:55	0.550	75.09	85.06	0.05
398	4/3/2025	08:54:00	0.551	75.06	85.29	-0.03
399	4/3/2025	08:54:05	0.553	75.11	85.56	0.05
400	4/3/2025	08:54:10	0.554	75.11	85.85	-0.01
401	4/3/2025	08:54:15	0.556	75.16	86.17	0.06
402	4/3/2025	08:54:20	0.557	75.19	86.49	0.03
403	4/3/2025	08:54:25	0.558	75.22	86.84	0.03
404	4/3/2025	08:54:30	0.560	75.22	87.19	0.00
405	4/3/2025	08:54:35	0.561	75.27	87.55	0.04
406	4/3/2025	08:54:40	0.563	75.30	87.91	0.03
407	4/3/2025	08:54:45	0.564	75.31	88.26	0.01
408	4/3/2025	08:54:50	0.565	75.35	88.61	0.04
409	4/3/2025	08:54:55	0.567	75.35	88.95	-0.01
410	4/3/2025	08:55:00	0.568	75.43	89.30	0.08
411	4/3/2025	08:55:05	0.569	75.36	89.62	-0.07
412	4/3/2025	08:55:10	0.571	75.30	89.90	-0.06
413	4/3/2025	08:55:15	0.572	75.30	90.14	0.01
414	4/3/2025	08:55:20	0.574	75.28	90.36	-0.03
415	4/3/2025	08:55:25	0.575	75.30	90.56	0.03
416	4/3/2025	08:55:30	0.576	75.25	90.73	-0.06
417	4/3/2025	08:55:35	0.578	75.29	90.90	0.04
418	4/3/2025	08:55:40	0.579	75.28	91.06	0.00
419	4/3/2025	08:55:45	0.581	75.29	91.20	0.00
420	4/3/2025	08:55:50	0.582	75.25	91.34	-0.03
421	4/3/2025	08:55:55	0.583	75.29	91.48	0.03
422	4/3/2025	08:56:00	0.585	75.28	91.60	-0.01
423	4/3/2025	08:56:05	0.586	75.31	91.72	0.03
424	4/3/2025	08:56:10	0.588	75.34	91.84	0.03
425	4/3/2025	08:56:15	0.589	75.29	91.95	-0.05
426	4/3/2025	08:56:20	0.590	75.31	92.07	0.01
427	4/3/2025	08:56:25	0.592	75.27	92.18	-0.03
428	4/3/2025	08:56:30	0.593	75.25	92.29	-0.03
429	4/3/2025	08:56:35	0.594	75.25	92.39	0.00
430	4/3/2025	08:56:40	0.596	75.26	92.50	0.01
431	4/3/2025	08:56:45	0.597	75.25	92.60	-0.01
432	4/3/2025	08:56:50	0.599	75.27	92.71	0.02
433	4/3/2025	08:56:55	0.600	75.30	92.81	0.03
434	4/3/2025	08:57:00	0.601	75.25	92.92	-0.05
435	4/3/2025	08:57:05	0.603	75.31	93.03	0.06
436	4/3/2025	08:57:10	0.604	75.29	93.13	-0.02
437	4/3/2025	08:57:15	0.606	75.31	93.23	0.03

438	4/3/2025	08:57:20	0.607	75.35	93.32	0.03
439	4/3/2025	08:57:25	0.608	75.30	93.42	-0.04
440	4/3/2025	08:57:30	0.610	75.29	93.52	-0.02
441	4/3/2025	08:57:35	0.611	75.26	93.61	-0.02
442	4/3/2025	08:57:40	0.613	75.29	93.71	0.03
443	4/3/2025	08:57:45	0.614	75.22	93.80	-0.07
444	4/3/2025	08:57:50	0.615	75.26	93.87	0.04
445	4/3/2025	08:57:55	0.617	75.27	93.96	0.01
446	4/3/2025	08:58:00	0.618	75.23	94.04	-0.04
447	4/3/2025	08:58:05	0.619	75.25	94.12	0.02
448	4/3/2025	08:58:10	0.621	75.23	94.20	-0.02
449	4/3/2025	08:58:15	0.622	75.27	94.28	0.03
450	4/3/2025	08:58:20	0.624	75.24	94.35	-0.02
451	4/3/2025	08:58:25	0.625	75.27	94.43	0.03
452	4/3/2025	08:58:30	0.626	75.27	94.51	0.00
453	4/3/2025	08:58:35	0.628	75.24	94.58	-0.03
454	4/3/2025	08:58:40	0.629	75.29	94.65	0.05
455	4/3/2025	08:58:45	0.631	75.24	94.73	-0.04
456	4/3/2025	08:58:50	0.632	75.28	94.80	0.04
457	4/3/2025	08:58:55	0.633	75.23	94.87	-0.04
458	4/3/2025	08:59:00	0.635	75.23	94.94	0.00
459	4/3/2025	08:59:05	0.636	75.28	95.01	0.05
460	4/3/2025	08:59:10	0.638	75.24	95.08	-0.04
461	4/3/2025	08:59:15	0.639	75.23	95.14	-0.01
462	4/3/2025	08:59:20	0.640	75.29	95.20	0.06
463	4/3/2025	08:59:25	0.642	75.25	95.27	-0.04
464	4/3/2025	08:59:30	0.643	75.30	95.32	0.06
465	4/3/2025	08:59:35	0.644	75.27	95.39	-0.03
466	4/3/2025	08:59:40	0.646	75.24	95.46	-0.04
467	4/3/2025	08:59:45	0.647	75.25	95.52	0.02
468	4/3/2025	08:59:50	0.649	75.22	95.58	-0.04
469	4/3/2025	08:59:55	0.650	75.23	95.64	0.01
470	4/3/2025	09:00:00	0.651	75.21	95.69	-0.02
471	4/3/2025	09:00:05	0.653	75.20	95.75	-0.02
472	4/3/2025	09:00:10	0.654	75.14	95.80	-0.06
473	4/3/2025	09:00:15	0.656	75.13	95.83	-0.01
474	4/3/2025	09:00:20	0.657	75.03	95.87	-0.09
475	4/3/2025	09:00:25	0.658	74.97	95.88	-0.07
476	4/3/2025	09:00:30	0.660	74.99	95.90	0.02
477	4/3/2025	09:00:35	0.661	74.91	95.91	-0.08
478	4/3/2025	09:00:40	0.663	74.85	95.90	-0.06
479	4/3/2025	09:00:45	0.664	74.84	95.89	-0.01
480	4/3/2025	09:00:50	0.665	74.75	95.86	-0.10
481	4/3/2025	09:00:55	0.667	74.66	95.83	-0.08

482	4/3/2025 09:01:00	0.668	74.63	95.78	-0.04
483	4/3/2025 09:01:05	0.669	74.58	95.72	-0.04
484	4/3/2025 09:01:10	0.671	74.49	95.64	-0.09
485	4/3/2025 09:01:15	0.672	74.40	95.56	-0.09
486	4/3/2025 09:01:20	0.674	74.30	95.45	-0.10
487	4/3/2025 09:01:25	0.675	74.24	95.32	-0.06
488	4/3/2025 09:01:30	0.676	74.16	95.18	-0.08
489	4/3/2025 09:01:35	0.678	74.15	95.03	-0.01
490	4/3/2025 09:01:40	0.679	74.09	94.86	-0.06
491	4/3/2025 09:01:45	0.681	74.05	94.68	-0.04
492	4/3/2025 09:01:50	0.682	73.92	94.48	-0.13
493	4/3/2025 09:01:55	0.683	73.88	94.28	-0.04
494	4/3/2025 09:02:00	0.685	73.79	94.05	-0.09
495	4/3/2025 09:02:05	0.686	73.73	93.83	-0.06
496	4/3/2025 09:02:10	0.688	73.66	93.58	-0.07
497	4/3/2025 09:02:15	0.689	73.55	93.32	-0.11
498	4/3/2025 09:02:20	0.690	73.51	93.04	-0.04
499	4/3/2025 09:02:25	0.692	73.44	92.74	-0.07
500	4/3/2025 09:02:30	0.693	73.30	92.44	-0.15
501	4/3/2025 09:02:35	0.694	73.25	92.12	-0.05
502	4/3/2025 09:02:40	0.696	73.17	91.78	-0.08
503	4/3/2025 09:02:45	0.697	73.05	91.44	-0.11
504	4/3/2025 09:02:50	0.699	73.04	91.08	-0.02
505	4/3/2025 09:02:55	0.700	72.96	90.71	-0.08
506	4/3/2025 09:03:00	0.701	72.98	90.32	0.02
507	4/3/2025 09:03:05	0.703	72.87	89.93	-0.11
508	4/3/2025 09:03:10	0.704	72.79	89.52	-0.08
509	4/3/2025 09:03:15	0.706	72.71	89.10	-0.08
510	4/3/2025 09:03:20	0.707	72.60	88.68	-0.12
511	4/3/2025 09:03:25	0.708	72.52	88.24	-0.08
512	4/3/2025 09:03:30	0.710	72.45	87.79	-0.07
513	4/3/2025 09:03:35	0.711	72.32	87.34	-0.13
514	4/3/2025 09:03:40	0.713	72.27	86.88	-0.05
515	4/3/2025 09:03:45	0.714	72.24	86.41	-0.03
516	4/3/2025 09:03:50	0.715	72.12	85.94	-0.12
517	4/3/2025 09:03:55	0.717	72.09	85.46	-0.03
518	4/3/2025 09:04:00	0.718	71.96	84.97	-0.12
519	4/3/2025 09:04:05	0.719	71.82	84.48	-0.15
520	4/3/2025 09:04:10	0.721	71.76	83.99	-0.06
521	4/3/2025 09:04:15	0.722	71.66	83.49	-0.10
522	4/3/2025 09:04:20	0.724	71.57	82.98	-0.09
523	4/3/2025 09:04:25	0.725	71.41	82.47	-0.16
524	4/3/2025 09:04:30	0.726	71.37	81.95	-0.04
525	4/3/2025 09:04:35	0.728	71.28	81.44	-0.09

526	4/3/2025 09:04:40	0.729	71.19	80.91	-0.09
527	4/3/2025 09:04:45	0.731	71.14	80.40	-0.05
528	4/3/2025 09:04:50	0.732	71.08	79.94	-0.06
529	4/3/2025 09:04:55	0.733	71.07	79.49	-0.01
530	4/3/2025 09:05:00	0.735	71.00	79.08	-0.07
531	4/3/2025 09:05:05	0.736	71.03	78.70	0.03
532	4/3/2025 09:05:10	0.738	70.96	78.36	-0.07
533	4/3/2025 09:05:15	0.739	70.96	78.07	0.00
534	4/3/2025 09:05:20	0.740	70.98	77.82	0.02
535	4/3/2025 09:05:25	0.742	57.14	77.61	-13.84
536	4/3/2025 09:05:30	0.743	35.47	77.43	-21.67
537	4/3/2025 09:05:35	0.744	22.87	77.26	-12.60
538	4/3/2025 09:05:40	0.746	14.97	77.06	-7.90
539	4/3/2025 09:05:45	0.747	11.53	76.88	-3.44
540	4/3/2025 09:05:50	0.749	11.19	76.70	-0.34
541	4/3/2025 09:05:55	0.750	11.18	76.54	0.00
542	4/3/2025 09:06:00	0.751	11.15	76.40	-0.03
543	4/3/2025 09:06:05	0.753	11.16	76.27	0.01
544	4/3/2025 09:06:10	0.754	11.18	76.13	0.02
545	4/3/2025 09:06:15	0.756	11.20	75.96	0.02
546	4/3/2025 09:06:20	0.757	11.19	75.78	0.00
547	4/3/2025 09:06:25	0.758	11.17	75.59	-0.02
548	4/3/2025 09:06:30	0.760	11.17	75.37	0.00
549	4/3/2025 09:06:35	0.761	11.23	75.14	0.07
550	4/3/2025 09:06:40	0.763	11.17	74.88	-0.06
551	4/3/2025 09:06:45	0.764	11.21	74.62	0.03
552	4/3/2025 09:06:50	0.765	11.22	74.37	0.01
553	4/3/2025 09:06:55	0.767	11.20	74.14	-0.02
554	4/3/2025 09:07:00	0.768	11.20	73.91	0.00
555	4/3/2025 09:07:05	0.769	11.19	73.67	-0.01
556	4/3/2025 09:07:10	0.771	11.21	73.41	0.02
557	4/3/2025 09:07:15	0.772	11.21	73.14	0.00
558	4/3/2025 09:07:20	0.774	11.22	72.88	0.01
559	4/3/2025 09:07:25	0.775	11.19	72.63	-0.03
560	4/3/2025 09:07:30	0.776	11.21	72.39	0.02
561	4/3/2025 09:07:35	0.778	11.23	72.12	0.02
562	4/3/2025 09:07:40	0.779	11.26	71.83	0.03
563	4/3/2025 09:07:45	0.781	11.20	71.50	-0.06
564	4/3/2025 09:07:50	0.782	11.17	71.14	-0.04



PRESSURE TEST CHART ANNOTATION

DATE	4-2-25	
WELL NAME	Northeast blanco unit #404	
RIG NAME	N/A	
WHAT IS BEING TESTED		
LP START TIME AND PRESSURE		
LP END TIME AND PRESSURE		
LP FALL OFF IN 5 MINUTES		
LP PASS OR FAIL		
HP START TIME AND PRESSURE	10:35	565 PSI
HP END TIME AND PRESSURE	11:05	565 PSI
HP FALL OFF IN 5 MINUTES	-0	
HP PASS OR FAIL	Pass	
TEST EQUIP CALIBRATION DATE	3-24-25	
TEST COMPANY	HIGH TECH RENTAL TOOLS	
TESTER NAME/SIGNATURE	Troy Romero T. Romero	
RIP OP. NAME/SIGNATURE	Adam S... [Signature]	
WSL NAME/SIGNATURE	[Signature]	
COMMENTS:	4/2/25 NMDcd	

Sante Fe Main Office
Phone: (505) 476-3441

General Information
Phone: (505) 629-6116

Online Phone Directory
<https://www.emnrd.nm.gov/ocd/contact-us>

State of New Mexico
Energy, Minerals and Natural Resources
Oil Conservation Division
1220 S. St Francis Dr.
Santa Fe, NM 87505

CONDITIONS

Action 580669

CONDITIONS

Operator: SIMCOE LLC 1199 Main Ave., Suite 101 Durango, CO 81301	OGRID: 329736
	Action Number: 580669
	Action Type: [C-103U] Sub. Temporary Abandonment (C-103U)

CONDITIONS

Created By	Condition	Condition Date
andrew.fordyce	None	5/1/2026