

District I  
1625 N. French Dr., Hobbs, NM 88240  
District II  
1301 W. Grand Avenue, Artesia, NM 88210  
District III  
1000 Rio Brazos Road, Aztec, NM 87410  
District IV  
1220 S. St. Francis Dr., Santa Fe, NM 87505

State of New Mexico  
Energy Minerals and Natural Resources  
**RECEIVED**  
Oil Conservation Division  
1220 S. St. Francis Dr.  
Santa Fe, NM 87505  
SEP 13 2006

Form C-101  
May 27, 2004

Submit to appropriate District Office

☒ AMENDED REPORT

# APPLICATION FOR PERMIT TO DRILL, RE-ENTER, DEEPEN, PLUGBACK, OR ADD A ZONE

Operator Name and Address <b>EL PASO E &amp; P COMPANY, L.P. PO BOX 190 RATON, NM 87740</b>		OGRID Number <b>180514</b>
Property Code <b>25179</b>		API Number <b>30-007-20391</b>
Property Name <b>VERMEJO PARK RANCH (VPR)</b>		Well No. <b>VPR D 106</b>
Proposed Pool 1 <b>VERMEJO</b>		Proposed Pool 2 <b>RATON</b>

## Surface Location

UL or lot no.	Section	Township	Range	Lot Idn	Feet from the	North/South line	Feet from the	East/West line	County
<b>P</b>	<b>10</b>	<b>30N</b>	<b>17E</b>	<b>P</b>	<b>601</b>	<b>South</b>	<b>1254</b>	<b>East</b>	<b>Colfax</b>

## Proposed Bottom Hole Location If Different From Surface

UL or lot no.	Section	Township	Range	Lot Idn	Feet from the	North/South line	Feet from the	East/West line	County
<b>L</b>	<b>11</b>	<b>30N</b>	<b>17E</b>	<b>L</b>	<b>2635</b>	<b>South</b>	<b>4</b>	<b>West</b>	<b>Colfax</b>

## Additional Well Information

Work Type Code <b>N</b>	Well Type Code <b>G</b>	Cable/Rotary <b>Rotary/Fluid</b>	Lease Type Code <b>P</b>	Ground Level Elevation <b>9,106'</b>
Multiple <b>Yes</b>	Proposed Depth <b>2699' TVD 5024' MD</b>	Formation <b>Lower Vermejo</b>	Contractor <b>Ensign</b>	Spud Date <b>March 1, 2006</b>
Depth to Groundwater		Distance from nearest fresh water well		Distance from nearest surface water
Pit: Liner: Synthetic <input type="checkbox"/> _____ mils thick Clay <input type="checkbox"/> Pit Volume: _____ bbls Closed-Loop System <input type="checkbox"/>		Drilling Method: <b>Rotary/Fluid</b> Fresh Water <input checked="" type="checkbox"/> Brine <input type="checkbox"/> Diesel/Oil-based <input type="checkbox"/> Gas/Air <input type="checkbox"/>		

## Proposed Casing and Cement Program

Hole Size	Casing Size	Casing weight/foot	Setting Depth	Sacks of Cement	Estimated TOC
<b>4 3/4"</b>	<b>3 1/2"</b>	<b>9.3#</b>	<b>2570'- 5024' MD</b>	<b>None</b>	<b>Liner</b>

<sup>22</sup> Describe the proposed program. If this application is to DEEPEN or PLUG BACK, give the data on the present productive zone and proposed new productive zone. Describe the blowout prevention program, if any. Use additional sheets if necessary.

1. Set RBP in 5 1/2" casing at 2,570'.
2. Set Whip stock in 5 1/2" casing at 2,559'.
3. Cut window in 5 1/2" casing at 2,553'- 2,559'.
4. Drill a 4 3/4" hole in a 130' (42°) Radius curve to a 2,325' horizontal lateral in the lower Vermejo coal (Top 2,699' TVD).
5. Run 3 1/2" liner (No Cement) the length of the lateral.
6. Retrieve whip stock and RBP.
7. Clean out well bore, run production equipment, and put well back on production.

<sup>23</sup> I hereby certify that the information given above is true and complete to the best of my knowledge and belief. I further certify that the drilling pit will be constructed according to NMOCD guidelines <input type="checkbox"/> , a general permit <input type="checkbox"/> , or an (attached) alternative OCD-approved plan <input type="checkbox"/> .		<b>OIL CONSERVATION DIVISION</b>	
Printed name: <b>Shirley A. Mitchell</b> <i>Sam</i>		Approved by: <i>Sh Martin</i>	
Title: <b>Regulatory Analyst</b>		Title: <b>DISTRICT SUPERVISOR</b>	
E-mail Address: <b>Shirley.mitchell@elpaso.com</b>		Approval Date: <b>9-13-06</b> Expiration Date:	
Date: <b>09/01/2006</b>	Phone: <b>(505) 445-6785</b>	Conditions of Approval Attached <input type="checkbox"/>	

District I  
1625 N. French Dr., Hobbs, NM 88240  
District II  
1301 W. Grand Avenue, Artesia, NM 88210  
District III  
1000 Rio Brazos Rd., Aztec, NM 87410  
District IV  
1220 S. St. Francis Dr., Santa Fe, NM 87505

State of New Mexico  
Energy, Minerals & Natural Resources Department  
**OIL CONSERVATION DIVISION**  
1220 South St. Francis Dr.  
Santa Fe, NM 87505

Form C-102  
Revised October 12, 2005  
Submit to Appropriate District Office  
State Lease - 4 Copies  
Fee Lease - 3 Copies

☒ AMENDED REPORT

**WELL LOCATION AND ACREAGE DEDICATION PLAT**

<sup>1</sup> API Number <b>30-007-20391</b>	<sup>2</sup> Pool Code <b>97046</b>	<sup>3</sup> Pool Name <b>CASTLE ROCK PARK - VERMEJO GAS</b>
<sup>4</sup> Property Code <b>25179</b>	<sup>5</sup> Property Name <b>VERMEJO PARK RANCH</b>	<sup>6</sup> Well Number <b>VPR'D'-106</b>
<sup>7</sup> OGRID No. <b>180514</b>	<sup>8</sup> Operator Name <b>EL PASO ENERGY RATON, L.L.C.</b>	<sup>9</sup> Elevation <b>9106'</b>

<sup>10</sup> Surface Location

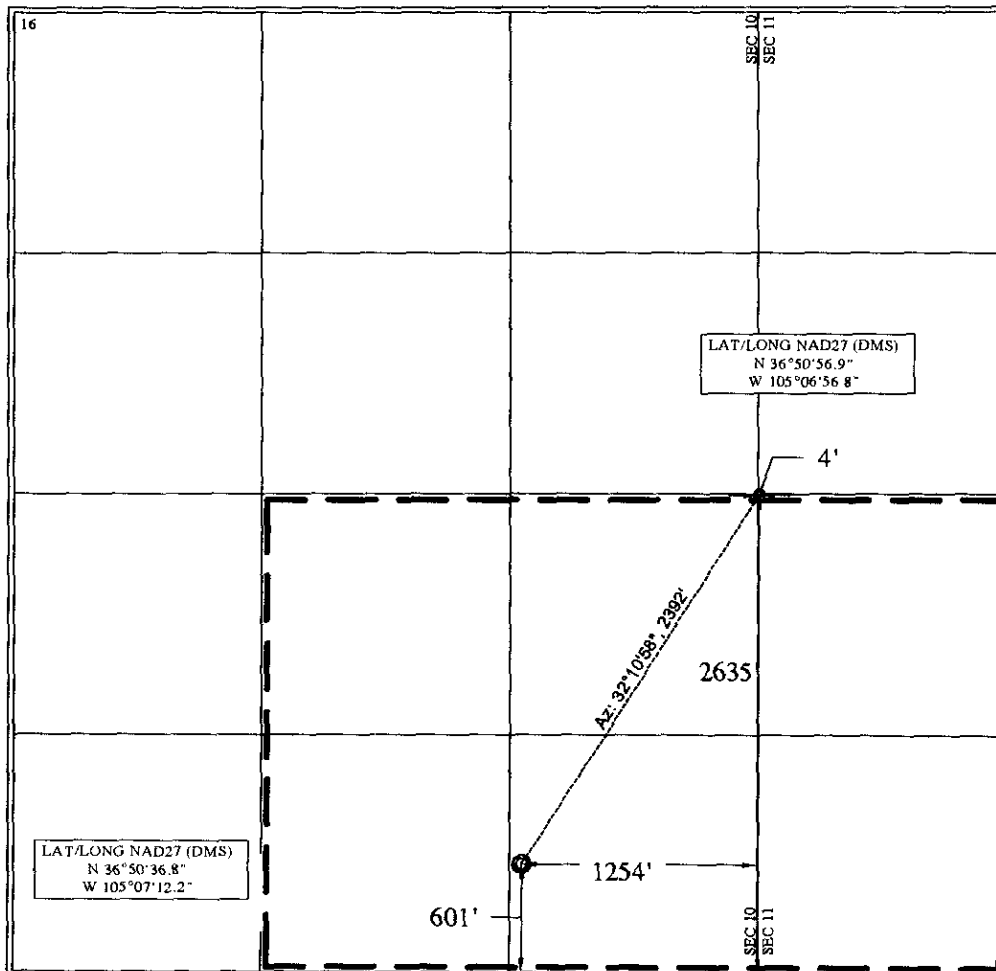
UL or lot no. <b>P</b>	Section <b>10</b>	Township <b>T 30 N</b>	Range <b>R 17 E</b>	Lot Idn <b>P</b>	Feet from the <b>601</b>	North/South line <b>SOUTH</b>	Feet from the <b>1254</b>	East/West line <b>EAST</b>	County <b>COLFAX</b>
---------------------------	----------------------	---------------------------	------------------------	---------------------	-----------------------------	----------------------------------	------------------------------	-------------------------------	-------------------------

<sup>11</sup> Bottom Hole Location If Different From Surface

UL or lot no. <b>L</b>	Section <b>11</b>	Township <b>T 30 N</b>	Range <b>R 17 E</b>	Lot Idn <b>L</b>	Feet from the <b>2635</b>	North/South line <b>SOUTH</b>	Feet from the <b>4</b>	East/West line <b>WEST</b>	County <b>COLFAX</b>
---------------------------	----------------------	---------------------------	------------------------	---------------------	------------------------------	----------------------------------	---------------------------	-------------------------------	-------------------------

<sup>12</sup> Dedicated Acres	<sup>13</sup> Joint or Infill	<sup>14</sup> Consolidation Code	<sup>15</sup> Order No.
-------------------------------	-------------------------------	----------------------------------	-------------------------

NO ALLOWABLE WILL BE ASSIGNED TO THIS COMPLETION UNTIL ALL INTERESTS HAVE BEEN CONSOLIDATED OR A NON-STANDARD UNIT HAS BEEN APPROVED BY THE DIVISION



<sup>17</sup> OPERATOR CERTIFICATION

I hereby certify that the information contained herein is true and complete to the best of my knowledge and belief, and that this organization either owns a working interest or undivided mineral interest in the land including the proposed bottom hole location or has a right to drill this well at this location pursuant to a contract with an owner of such a mineral or working interest, or to a voluntary pooling agreement or a compulsory pooling order heretofore entered by the division.

*Shirley Mitchell* 9-1-06  
Signature Date

*Shirley Mitchell*  
Printed Name

<sup>18</sup> SURVEYOR CERTIFICATION

I hereby certify that the well location shown on this plat was plotted from field notes of actual surveys made by me or under my supervision, and that the same is true and correct to the best of my belief.

August 17, 2006

Date of Survey

Signature and Seal of Professional Surveyor:

*Joe Shields*  
Certificate Number NM LS NO. 5103