

District I
1625 N. French Dr., Hobbs, NM 88240
District II
1301 W. Grand Avenue, Artesia, NM 88210
District III
1000 Rio Brazos Rd., Aztec, NM 87410
District IV
1220 S. St. Francis Dr., Santa Fe, NM 87505

State of New Mexico
Energy, Minerals & Natural Resources Department
OIL CONSERVATION DIVISION
1220 South St. Francis Dr.
Santa Fe, NM 87505

Form C-102
Revised October 12, 2005
Submit to Appropriate District Office
State Lease- 4 Copies
Fee Lease- 3 Copies
☒ AMENDED REPORT

WELL LOCATION AND ACREAGE DEDICATION PLAT

API Number 30-021-20449	Pool Code 96010	Pool Name BRAVO DOME
Property Code 37025	Property Name LIBBY MINERALS LLC 1931	Well Number 18-1-F
GRID No. 251905	Operator Name RELIANT EXPLORATION & PRODUCTION, LLC.	Elevation 4505'

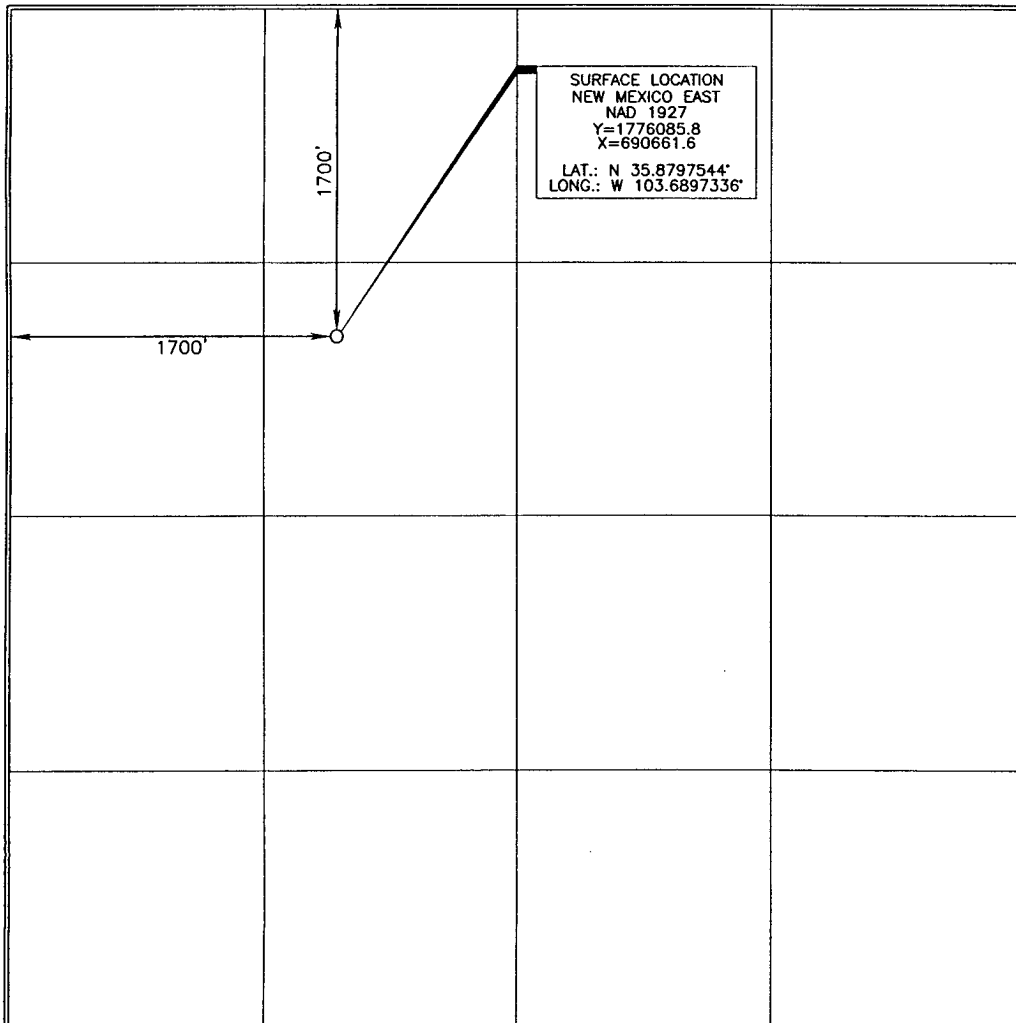
Surface Location

UL or lot no. F	Section 18	Township 19 NORTH	Range 31 EAST, N.M.P.M.	Lot Idn	Feet from the 1700'	North/South line NORTH	Feet from the 1700'	East/West line WEST	County HARDING
---------------------------	----------------------	-----------------------------	-----------------------------------	---------	-------------------------------	----------------------------------	-------------------------------	-------------------------------	--------------------------

Bottom Hole Location If Different From Surface

UL or lot no.	Section	Township	Range	Lot Idn	Feet from the	North/South line	Feet from the	East/West line	County
Dedicated Acres		Joint or Infill	Consolidation Code	Order No.					

No allowable will be assigned to this completion until all interests have been consolidated or a non-standard unit has been approved by the division.



OPERATOR CERTIFICATION

I hereby certify that the information contained herein is true and complete to the best of my knowledge and belief, and that this organization either owns a working interest or unleased mineral interest in the land including the proposed bottom hole location or has a right to drill this well at this location pursuant to a contract with an owner of such a mineral or working interest, or to a voluntary pooling agreement or a compulsory pooling order heretofore entered by the division.

[Signature] **2-25-08**
Signature Date

Vance Vandenberg
Printed Name

SURVEYOR CERTIFICATION

I hereby certify that the well location shown on this plat was plotted from field notes of actual surveys made by me or under my supervision and that the same is true and correct to the best of my belief.

15079
FEBRUARY 13, 2008
Date of Survey

Signature and Seal of Professional Surveyor

[Signature] **2/20/08**
Certificate Number **15079**

Reliant Exploration and Production LLC

3609 Kermit Highway
Odessa, Texas 79764

RECEIVED

2008 MAR 7 PM 1 27

March 6, 2008

VIA UPS NEXT DAY AIR

Mr. Ed Martin
District IV Supervisor
New Mexico Oil Conservation Division
1220 S. St. Francis
Santa Fe, New Mexico 87505

Re: Reliant Exploration and Production LLC
OGRID Number: 251905
API Number: 30-021-20449

Dear Mr. Martin:

Enclosed for filing is revised C-102, Well Location and Acreage Dedication Plat dated February 29, 2008, OGRID Number 251905, API Number 30-021-20449, Well No. 18-1-F, Section 18, Township 19 North, Range 31 East, NMPM, Harding County, NM. The only change is that the coordinates of the surface location have been changed.

Please let me know if you have any questions or need additional information.
Thank you.

Kindest Regards,

Reliant Exploration and Production LLC



Frank A. Hunold, Jr.

General Counsel

Tel. (432) 288-2439

Email: fhunold@reliantholdingsltd.com