

District I
1625 N. French Dr., Hobbs, NM 88240
District II
1301 W. Grand Avenue, Artesia, NM 88210
District III
1000 Rio Brazos Rd., Aztec, NM 87410
District IV
1220 S. St. Francis Dr., Santa Fe, NM 87505

State of New Mexico
Energy, Minerals & Natural Resources

Form C-102
Revised October 12, 2005

OIL CONSERVATION DIVISION
1220 South St. Francis Dr.
Santa Fe, NM 87505
Submit to Appropriate District Office
State Lease - 4 Copies
Fee Lease - 3 Copies

☒ AMENDED REPORT

WELL LOCATION AND ACREAGE DEDICATION PLAT

¹ API Number 30-021-20101	² Pool Code 96010	³ Pool Name Bravo Dome Carbon Dioxide Gas 640
⁴ Property Code 27111	⁵ Property Name Bravo Dome Carbon Dioxide Gas Unit 2032	⁶ Well Number 321
⁷ OGRID No. 16696	⁸ Operator Name OXY USA Inc.	⁹ Elevation 4690.1'

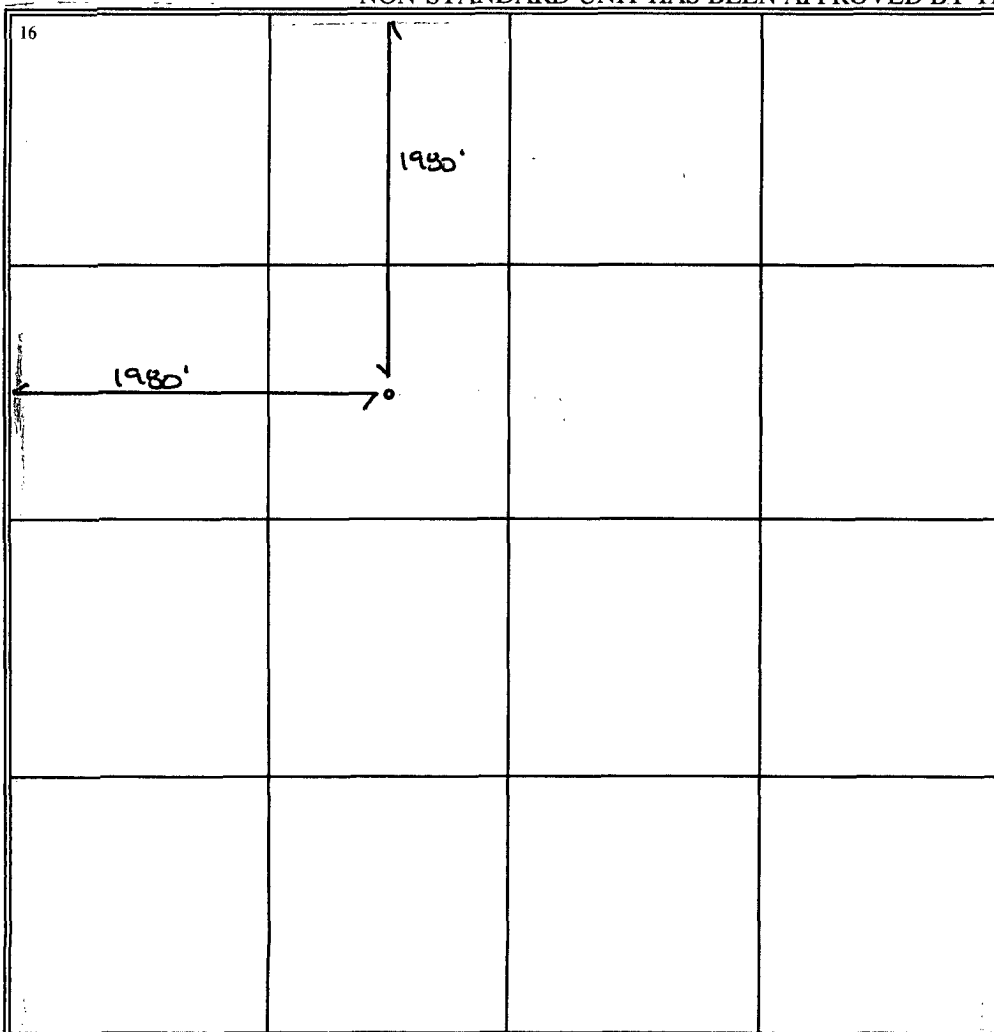
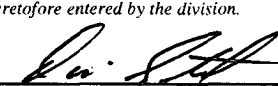

¹⁰ Surface Location

UL or lot no. F	Section 32	Township 20 N	Range 32 E	Lot. Idn.	Feet from the 1980	North/South line north	Feet from the 1980	East/West line west	County Harding
--------------------	---------------	------------------	---------------	-----------	-----------------------	---------------------------	-----------------------	------------------------	-------------------

¹¹ Bottom Hole Location If Different From Surface

UL or lot no.	Section	Township	Range	Lot. Idn.	Feet from the	North/South line	Feet from the	East/West line	County
¹² Dedicated Acres 640	¹³ Joint or Infill N	¹⁴ Consolidation Code	¹⁵ Order No.						

NO ALLOWABLE WILL BE ASSIGNED TO THIS COMPLETION UNTIL ALL INTERESTS HAVE BEEN CONSOLIDATED OR A
NON-STANDARD UNIT HAS BEEN APPROVED BY THE DIVISION

¹⁶ 	¹⁷ OPERATOR CERTIFICATION I hereby certify that the information contained herein is true and complete to the best of my knowledge and belief, and that this organization either owns a working interest or unleased mineral interest in the land including the proposed bottom hole location or has a right to drill this well at this location pursuant to a contract with an owner of such a mineral or working interest, or to a voluntary pooling agreement or a compulsory pooling order heretofore entered by the division.  6/13/08 Signature Date David Stewart Printed Name Sr. Regulatory Analyst OK 
	¹⁸ SURVEYOR CERTIFICATION I hereby certify that the well location shown on this plat was plotted from field notes of actual surveys made by me or under my supervision, and that the same is true and correct to the best of my belief. Date of Survey Signature and Seal of Professional Surveyer: Certificate Number

NEW MEXICO OIL CONSERVATION COMMISSION
WELL LOCATION AND ACREAGE DEDICATION PLAT

Form C-102
Supersedes C-128
Effective 1-1-65

BD 2032-321

All distances must be from the outer boundaries of the Section

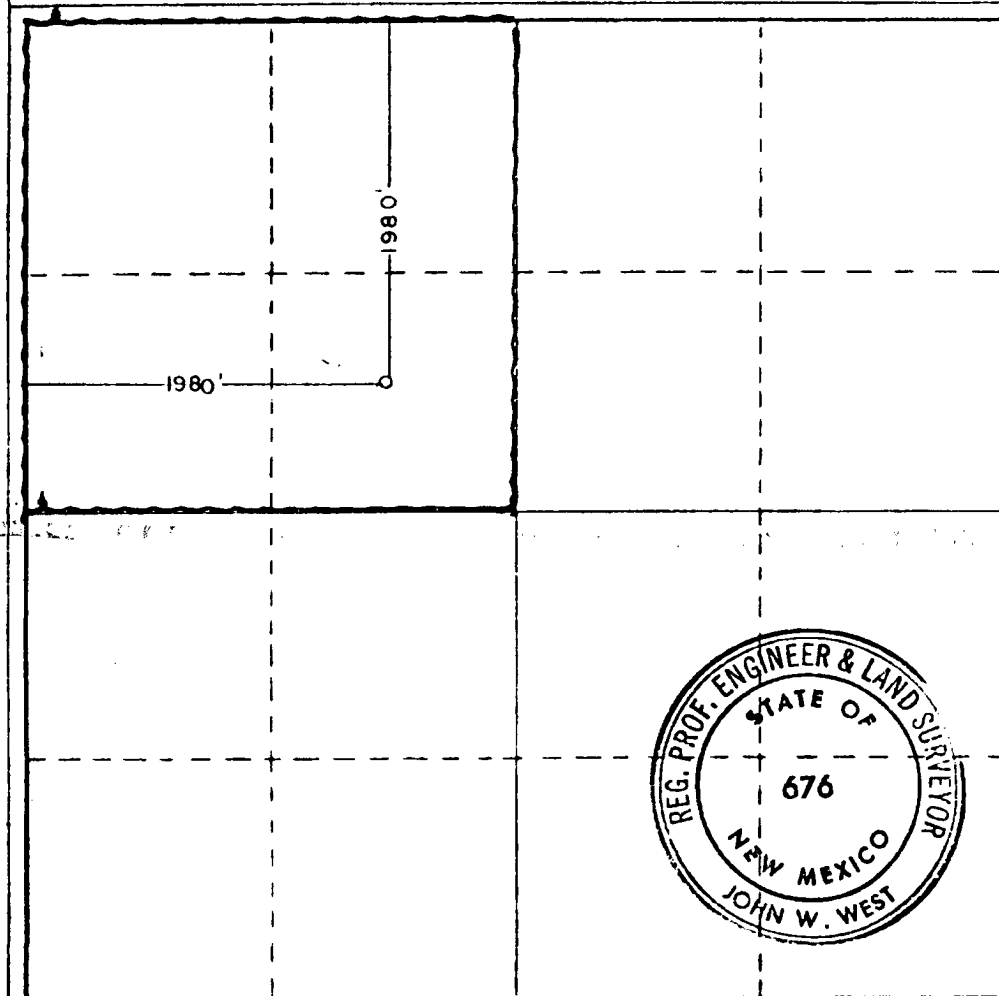
Operator Amoco Production Co.		Lease State "KJ"		Well No. 1
Unit Letter F	Section 32	Township 20 North	Range 32 East	County Harding
Actual Footage Location of Well:				
1980 feet from the North		line and 1980		feet from the West
Ground Level Elev. 4690.1	Producing Formation Tubb	Pool Und. Tubb	Dedicated Acreage: 160 Acres	

- Outline the acreage dedicated to the subject well by colored pencil or hatchure marks on the plat below.
- If more than one lease is dedicated to the well, outline each and identify the ownership thereof (both as to working interest and royalty).
- If more than one lease of different ownership is dedicated to the well, have the interests of all owners been consolidated by communitization, unitization, force-pooling, etc?

☐ Yes ☐ No If answer is "yes," type of consolidation _____

If answer is "no," list the owners and tract descriptions which have actually been consolidated. (Use reverse side of this form if necessary.) _____

No allowable will be assigned to the well until all interests have been consolidated (by communitization, unitization, forced-pooling, or otherwise) or until a non-standard unit, eliminating such interests, has been approved by the Commission.



CERTIFICATION

I hereby certify that the information contained herein is true and complete to the best of my knowledge and belief.

Name: Bob Davis
Position: Admin. Analyst
Company: Amoco Production Company
Date: 12-10-80

I hereby certify that the well location shown on this plat was plotted from field notes of actual surveys made by me or under my supervision, and that the same is true and correct to the best of my knowledge and belief.

Date Surveyed: 12-4-80

Registered Professional Engineer and/or Land Surveyor

John W. West
Certificate No. JOHN W. WEST 676
PATRICK A. ROMERO 6888
Ronald J. Eidson 3239

0 330 660 990 1320 1650 1980 2310 2640 2970 3300 3630 3960 4290 4620 4950 5280 5610 5940 6270 6600