

District I  
1625 N. French Dr., Hobbs, NM 88240  
District II  
1301 W. Grand Avenue, Artesia, NM 88210  
District III  
1000 Rio Brazos Rd., Aztec, NM 87410  
District IV  
1220 S. St. Francis Dr., Santa Fe, NM 87505

State of New Mexico  
Energy, Minerals & Natural Resources

OIL CONSERVATION DIVISION  
1220 South St. Francis Dr.  
Santa Fe, NM 87505

Form C-102

Revised October 12, 2005

Submit to Appropriate District Office

State Lease - 4 Copies

Fee Lease - 3 Copies

☒ AMENDED REPORT

WELL LOCATION AND ACREAGE DEDICATION PLAT

<sup>1</sup> API Number 30-021-20092	<sup>2</sup> Pool Code 96010	<sup>3</sup> Pool Name Bravo Dome Carbon Dioxide Gas 640
<sup>4</sup> Property Code 27111	<sup>5</sup> Property Name Bravo Dome Carbon Dioxide Gas Unit 1932	<sup>6</sup> Well Number 071
<sup>7</sup> OGRID No. 16696	<sup>8</sup> Operator Name OXY USA Inc.	<sup>9</sup> Elevation 4595.1'

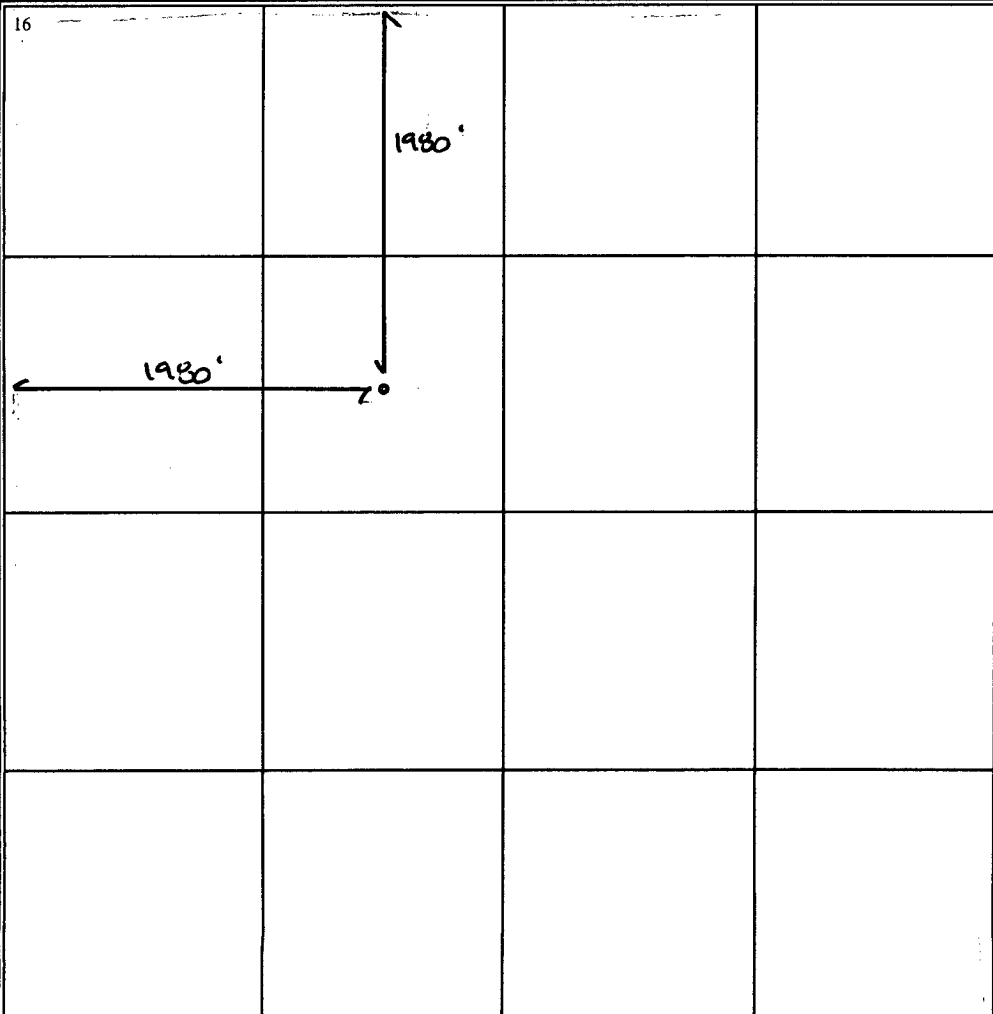
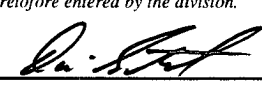
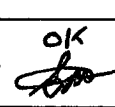
<sup>10</sup> Surface Location

UL or lot no. F	Section 7	Township 19 N	Range 32 E	Lot. Idn	Feet from the 1980	North/South line north	Feet from the 1980	East/West line west	County Harding
--------------------	--------------	------------------	---------------	----------	-----------------------	---------------------------	-----------------------	------------------------	-------------------

<sup>11</sup> Bottom Hole Location If Different From Surface

UL or lot no.	Section	Township	Range	Lot. Idn	Feet from the	North/South line	Feet from the	East/West line	County
<sup>12</sup> Dedicated Acres 640	<sup>13</sup> Joint or Infill N	<sup>14</sup> Consolidation Code	<sup>15</sup> Order No.						

NO ALLOWABLE WILL BE ASSIGNED TO THIS COMPLETION UNTIL ALL INTERESTS HAVE BEEN CONSOLIDATED OR A  
NON-STANDARD UNIT HAS BEEN APPROVED BY THE DIVISION

<sup>16</sup>		<p><sup>17</sup> OPERATOR CERTIFICATION</p> <p>I hereby certify that the information contained herein is true and complete to the best of my knowledge and belief, and that this organization either owns a working interest or unleased mineral interest in the land including the proposed bottom hole location or has a right to drill this well at this location pursuant to a contract with an owner of such a mineral or working interest, or to a voluntary pooling agreement or a compulsory pooling order heretofore entered by the division.</p> <p> 6/13/08</p> <p>Signature Date</p> <p>David Stewart</p> <p>Printed Name</p> <p>Sr. Regulatory Analyst </p>
		<p><sup>18</sup> SURVEYOR CERTIFICATION</p> <p>I hereby certify that the well location shown on this plat was plotted from field notes of actual surveys made by me or under my supervision, and that the same is true and correct to the best of my belief.</p> <p>Date of Survey</p> <p>Signature and Seal of Professional Surveyer:</p> <p>Certificate Number</p>

NEW MEXICO OIL CONSERVATION COMMISSION  
WELL LOCATION AND ACREAGE DEDICATION PLAT

Form C-102  
Supersedes C-128  
Effective 1-1-65

BD 1932-071

All distances must be from the outer boundaries of the Section

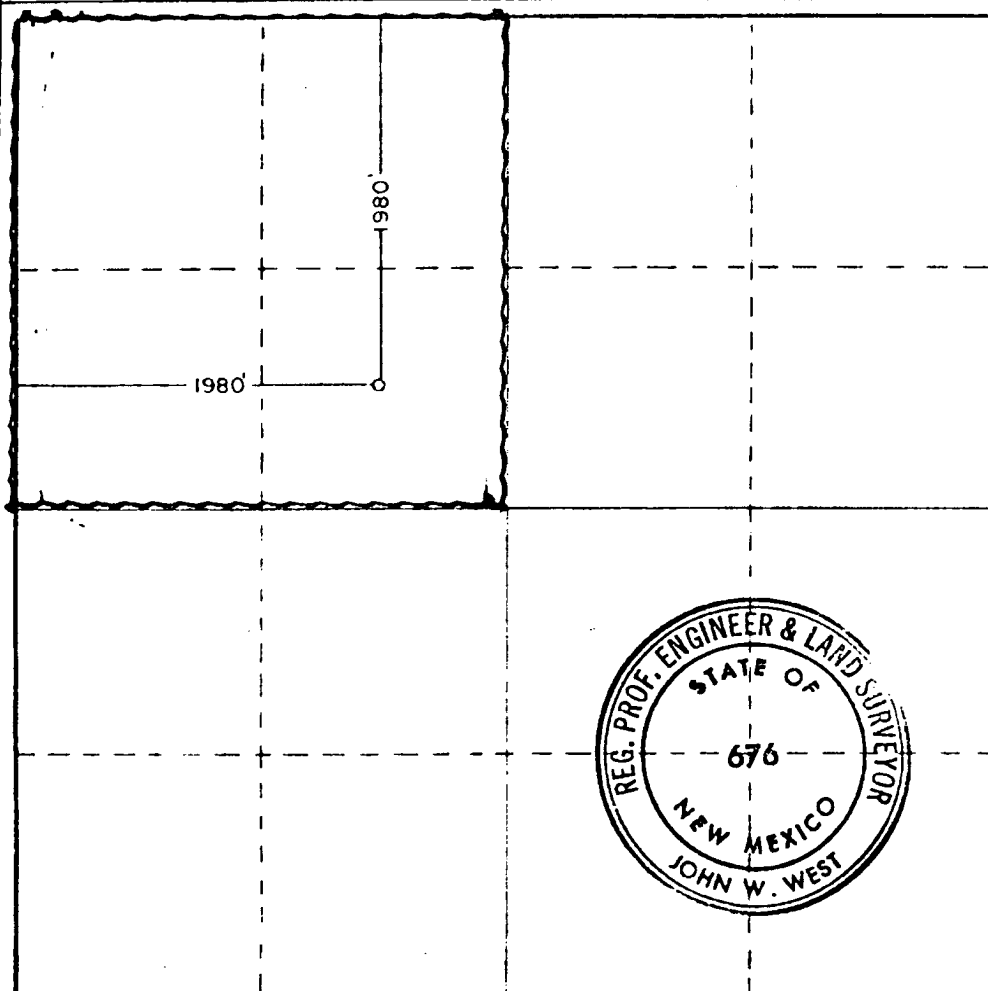
Operator Amoco Production Co.		Lease State "KX"		Well No. 1	
Unit Letter F	Section 7	Township 19 North	Range 32 East	County Harding	
Actual Footage Location of Well: 1980 feet from the North line and 1980 feet from the West line					
Ground Level Elev. 4595.1	Producing Formation Tubb		Pool Und. Tubb	Dedicated Acreage: 160 Acres	

1. Outline the acreage dedicated to the subject well by colored pencil or hachure marks on the plat below.
2. If more than one lease is dedicated to the well, outline each and identify the ownership thereof (both as to working interest and royalty).
3. If more than one lease of different ownership is dedicated to the well, have the interests of all owners been consolidated by communitization, unitization, force-pooling, etc?

☐ Yes ☐ No If answer is "yes," type of consolidation \_\_\_\_\_

If answer is "no," list the owners and tract descriptions which have actually been consolidated. (Use reverse side of this form if necessary.) \_\_\_\_\_

No allowable will be assigned to the well until all interests have been consolidated (by communitization, unitization, forced-pooling, or otherwise) or until a non-standard unit, eliminating such interests, has been approved by the Commission.



CERTIFICATION

I hereby certify that the information contained herein is true and complete to the best of my knowledge and belief.

Name  
*Bob Davis*  
Position  
Admin. Analyst  
Company  
Amoco Production Company  
Date  
12-10-80

I hereby certify that the well location shown on this plat was plotted from field notes of actual surveys made by me or under my supervision, and that the same is true and correct to the best of my knowledge and belief.

Date Surveyed  
11-29-80  
Registered Professional Engineer and/or Land Surveyor

*John W. West*  
Certificate No. JOHN W. WEST 676  
PATRICK A. ROMERO 6663  
Ronald J. Eldson 3239

0 320 640 960 1280 1600 1920 2240 2560 2880 3200 3520 3840 4160 4480 4800 5120 5440 5760 6080 6400 6720 7040 7360 7680 8000 8320 8640 8960 9280 9600 9920 10240 10560 10880 11200 11520 11840 12160 12480 12800 13120 13440 13760 14080 14400 14720 15040 15360 15680 16000 16320 16640 16960 17280 17600 17920 18240 18560 18880 19200 19520 19840 20160 20480 20800 21120 21440 21760 22080 22400 22720 23040 23360 23680 24000 24320 24640 24960 25280 25600 25920 26240 26560 26880 27200 27520 27840 28160 28480 28800 29120 29440 29760 30080 30400 30720 31040 31360 31680 32000 32320 32640 32960 33280 33600 33920 34240 34560 34880 35200 35520 35840 36160 36480 36800 37120 37440 37760 38080 38400 38720 39040 39360 39680 40000 40320 40640 40960 41280 41600 41920 42240 42560 42880 43200 43520 43840 44160 44480 44800 45120 45440 45760 46080 46400 46720 47040 47360 47680 48000 48320 48640 48960 49280 49600 49920 50240 50560 50880 51200 51520 51840 52160 52480 52800 53120 53440 53760 54080 54400 54720 55040 55360 55680 56000 56320 56640 56960 57280 57600 57920 58240 58560 58880 59200 59520 59840 60160 60480 60800 61120 61440 61760 62080 62400 62720 63040 63360 63680 64000 64320 64640 64960 65280 65600 65920 66240 66560 66880 67200 67520 67840 68160 68480 68800 69120 69440 69760 70080 70400 70720 71040 71360 71680 72000 72320 72640 72960 73280 73600 73920 74240 74560 74880 75200 75520 75840 76160 76480 76800 77120 77440 77760 78080 78400 78720 79040 79360 79680 80000 80320 80640 80960 81280 81600 81920 82240 82560 82880 83200 83520 83840 84160 84480 84800 85120 85440 85760 86080 86400 86720 87040 87360 87680 88000 88320 88640 88960 89280 89600 89920 90240 90560 90880 91200 91520 91840 92160 92480 92800 93120 93440 93760 94080 94400 94720 95040 95360 95680 96000 96320 96640 96960 97280 97600 97920 98240 98560 98880 99200 99520 99840 100000