

District I
1625 N. French Dr., Hobbs, NM 88240
District II
1301 W. Grand Avenue, Artesia, NM 88210
District III
1000 Rio Brazos Road, Aztec, NM 87410
District IV
1220 S. Francis Dr., Santa Fe, NM 87505

State of New Mexico
Energy Minerals and Natural Resources

Oil Conservation Division
1220 S. St. Francis Dr.
Santa Fe, NM 87505

Form C-101
Revised March 17, 1999

Submit to appropriate District Office
State Lease - 6 Copies
Fee Lease - 5 Copies

☐ AMENDED REPORT

APPLICATION FOR PERMIT TO DRILL, RE-ENTER, DEEPEN, PLUGBACK, OR ADD A ZONE

¹ Operator Name and Address Prairie Sun, Inc. 10713 Ranch Road 620 N. <i>BBG F Suite 621 Austin, TX 78726</i>		² OGRID Number 173235
		³ API Number 30 - 037- 20032 20052
⁴ Property Code 30482	⁵ Property Name Anna Katheryn	⁶ Well No. 2

⁷ Surface Location

UL or lot no.	Section	Township	Range	Lot Idn	Feet from the	North/South line	Feet from the	East/West line	County
1	30	10N	27E		660'	North	600'	West	Quay

⁸ Proposed Bottom Hole Location If Different From Surface

UL or lot no.	Section	Township	Range	Lot Idn	Feet from the	North/South line	Feet from the	East/West line	County

⁹ Proposed Pool 1 Wildcat	¹⁰ Proposed Pool 2
---	-------------------------------

¹¹ Work Type Code N	¹² Well Type Code G	¹³ Cable/Rotary R	¹⁴ Lease Type Code P	¹⁵ Ground Level Elevation 4433'
¹⁶ Multiple N	¹⁷ Proposed Depth 7500'	¹⁸ Formation Granite	¹⁹ Contractor Key Energy Services	²⁰ Spud Date ASAP

²¹ Proposed Casing and Cement Program

Hole Size	Casing Size	Casing weight/foot	Setting Depth	Sacks of Cement	Estimated TOC
17 1/2"	13 3/8"	48#	350'	400 sx.	Circulated
11"	8 5/8"	32#	3600'	2000 sx.	350'
7 7/8"	5 1/2"	17#	7500'	1200 sx.	3600'

²² Describe the proposed program. If this application is to DEEPEN or PLUG BACK, give the data on the present productive zone and proposed new productive zone.

Describe the blowout prevention program, if any. Use additional sheets if necessary.

Operator proposes to drill 17 1/2" hole to 350' and run 13 3/8" csg circulating cement to surface. 11" Double Ram BOP's with 3000 psi working pressure will be installed, tested, and operated daily. 8 5/8" csg will be set at 3600' to case off the salt section and intermediate formations. 7 7/8" hole will be drilled to TD. No DST's or Cores are planned. Electric logs will be run and 5 1/2" csg set and cemented to cover all pay zones. Well will be perforated and evaluated for commercial production, then stimulated as necessary.

BOP Diagram is attached.

²³ I hereby certify that the information given above is true and complete to the best of my knowledge and belief.

Signature:

Printed name: Gene Lee

Title: Agent

Date: 10/31/02

Phone: 505-622-7355

OIL CONSERVATION DIVISION

Approved by:

Title: DISTRICT SUPERVISOR

Approval Date: 11/4/02

Expiration Date: 11/4/03

Conditions of Approval:

Attached ☐

COLLECT AND SACK SAMPLES FOR
NEW MEXICO BUREAU OF MINES, SOCORRO
AT AT LEAST TEN FOOT INTERVALS

State of New Mexico

Energy, Minerals and Natural Resources Department

DISTRICT I

P.O. Box 1900, Hobbs, NM 88241-1900

DISTRICT II

P.O. Drawer DD, Artesia, NM 88211-0719

DISTRICT III

1000 Rio Brazos Rd., Aztec, NM 87410

DISTRICT IV

P.O. BOX 2088, SANTA FE, N.M. 87504-2088

OIL CONSERVATION DIVISION

P.O. Box 2088

Santa Fe, New Mexico 87504-2088

Form C-102

Revised February 10, 1994

Submit to Appropriate District Office

State Lease - 4 Copies

Fee Lease - 3 Copies

WELL LOCATION AND ACREAGE DEDICATION PLAT

☐ AMENDED REPORT

API Number 30-037-20032	Pool Code	Pool Name Wildcat
Property Code	Property Name ANNA KATHERYN	Well Number 2
OGRID No. 173235	Operator Name CKG ENERGY/PRAIRIE Sun Inc	Elevation 4433'

Surface Location

UL or lot No.	Section	Township	Range	Lot Idn	Feet from the	North/South line	Feet from the	East/West line	County
1	30	10-N	27-E		660'	NORTH	600	WEST	QUAY

Bottom Hole Location If Different From Surface

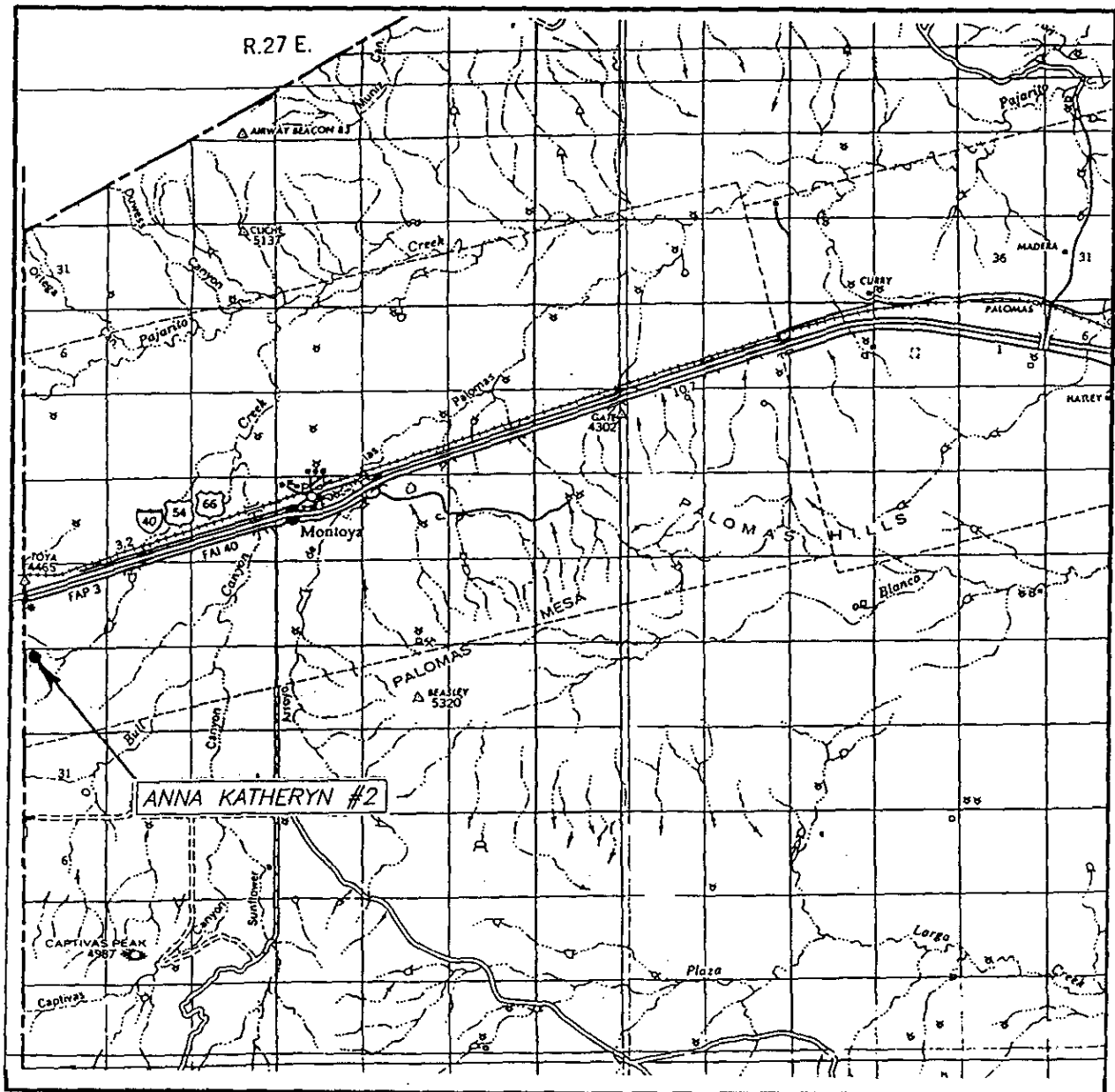
UL or lot No.	Section	Township	Range	Lot Idn	Feet from the	North/South line	Feet from the	East/West line	County

Dedicated Acres	Joint or Infill	Consolidation Code	Order No.

NO ALLOWABLE WILL BE ASSIGNED TO THIS COMPLETION UNTIL ALL INTERESTS HAVE BEEN CONSOLIDATED
OR A NON-STANDARD UNIT HAS BEEN APPROVED BY THE DIVISION

<p>LOT 1</p> <p>660'</p> <p>600'</p> <p>37.52 AC</p> <p>LOT 2</p> <p>37.44 AC</p> <p>LOT 3</p> <p>37.34 AC AC</p> <p>LOT 4</p> <p>37.25 AC</p>	<p>GEODETIC COORDINATES</p> <p>NAD 27 NMEZ</p> <p>Y=1480308.7</p> <p>X=563063.8</p> <p>LAT. 35°04'07.10"N</p> <p>LONG. 104°07'21.29"W</p>	<p>OPERATOR CERTIFICATION</p> <p>I hereby certify the information contained herein is true and complete to the best of my knowledge and belief.</p> <p><i>Gene Lee</i></p> <p>Signature</p> <p>GENE LEE</p> <p>Printed Name</p> <p><i>Agent</i></p> <p>Title</p> <p>10-31-02</p> <p>Date</p> <p>SURVEYOR CERTIFICATION</p> <p>I hereby certify that the well location shown on this plat was plotted from field notes of actual surveys made by me or under my supervision, and that the same is true and correct to the best of my belief.</p> <p>OCTOBER 25, 2002</p> <p>Date Surveyed</p> <p><i>Ronald J. Eidson</i></p> <p>Signature & Seal of Professional Surveyor</p> <p>RONALD J. EIDSON</p> <p>Certification No. RONALD J. EIDSON 3239</p> <p>GARY EIDSON 12641</p>
--	---	--

VICINITY MAP

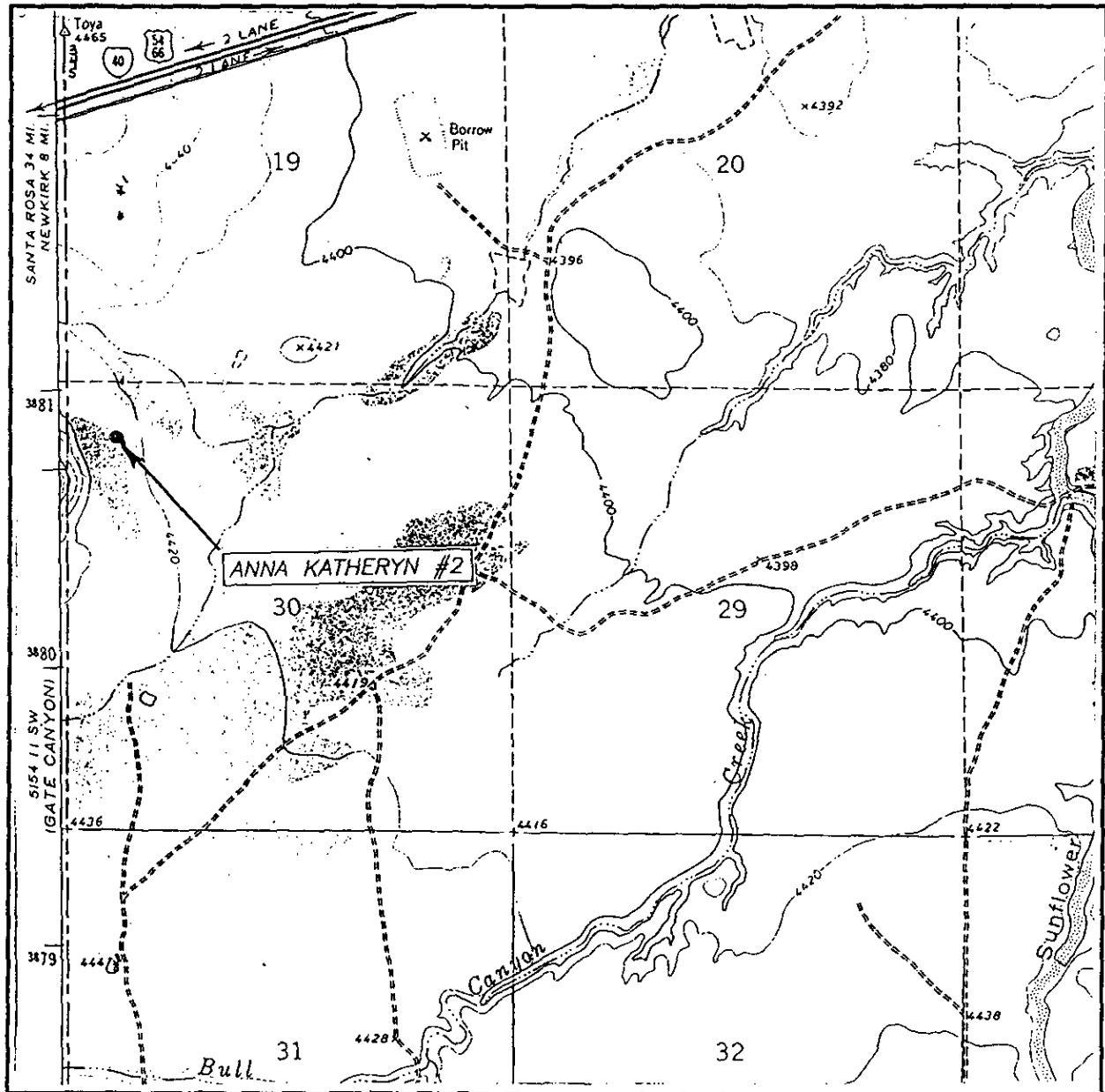


SCALE: 1" = 2 MILES

SEC. 30 TWP. 10-N RGE. 27-E
 SURVEY N.M.P.M.
 COUNTY QUAY
 DESCRIPTION 660' FNL & 600' FWL
 ELEVATION 4433'
 OPERATOR CKG ENERGY
 LEASE ANNA KATHERYN

JOHN WEST SURVEYING
 HOBBS, NEW MEXICO
 (505) 393-3117

LOCATION VERIFICATION MAP



SCALE: 1" = 2000'

CONTOUR INTERVAL: 20'
MONTOKA, N.M.

SEC. 30 TWP. 10-N RGE. 27-E

SURVEY N.M.P.M.

COUNTY QUAY

DESCRIPTION 660' FNL & 600' FWL

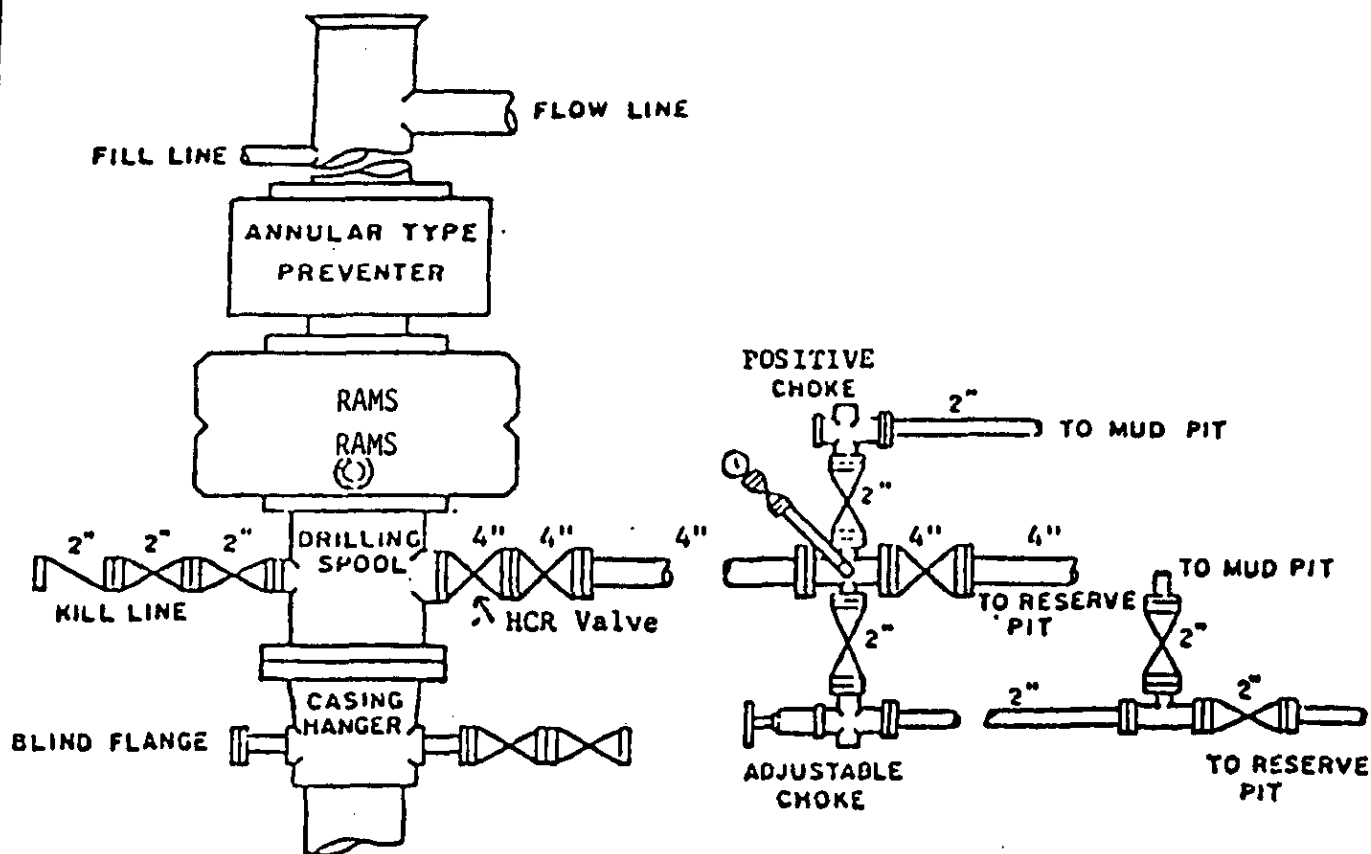
ELEVATION 4433'

OPERATOR CKG ENERGY

LEASE ANNA KATHERYN

U.S.G.S. TOPOGRAPHIC MAP
MONTOKA, N.M.

JOHN WEST SURVEYING
HOBBS, NEW MEXICO
(505) 393-3117



BOP STACK

3000 PSI WORKING PRESSURE

BOP ARRANGEMENT