

RECEIVED

APR 07 2004

OIL CONSERVATION
DIVISION

April 1, 2004

Mr. Michael Stogner
New Mexico Oil Conservation Division
1220 South Saint Francis Drive
Santa Fe, NM 87505

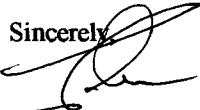
Re: Revised C-102 for the Rosa Unit 184B (Sec 34/T31N/R5W, 660' fsl & 250' fel, Rio Arriba County, New Mexico)

Dear Mr. Stogner,

Please find enclosed the revised C-102 showing east half dedication for your records. Once again, I apologize for the mistake.

Thank you for your attention to this matter. If you have any questions or concerns, please feel free to contact me anytime.

Sincerely,



John C. Thompson
Engineer

c:wpn/nsdk184B

NSL-5037

District I
PO Box 1980, Hobbs, NM 88241-1980

State of New Mexico
Energy, Minerals & Natural Resources Department

Form C-102
Revised February 21, 1994

District II
PO Drawer 00, Artesia, NM 88211-0719

OIL CONSERVATION DIVISION
PO Box 2088
Santa Fe, NM 87504-2088

Instructions on back
Submit to Appropriate District Office
State Lease - 4 Copies
Fee Lease - 3 Copies

District III
1000 Rio Brazos Rd., Aztec, NM 87410

District IV
PO Box 2088, Santa Fe, NM 87504-2088

☐ AMENDED REPORT

WELL LOCATION AND ACREAGE DEDICATION PLAT

*API Number	*Pool Code 72319 / 71599	*Pool Name BLANCO MESAVERDE / BASIN DAKOTA
*Property Code 17033	*Property Name ROSA UNIT	*Well Number 184B
*UGRID No. 120782	*Operator Name WILLIAMS PRODUCTION COMPANY	*Elevation 6569'

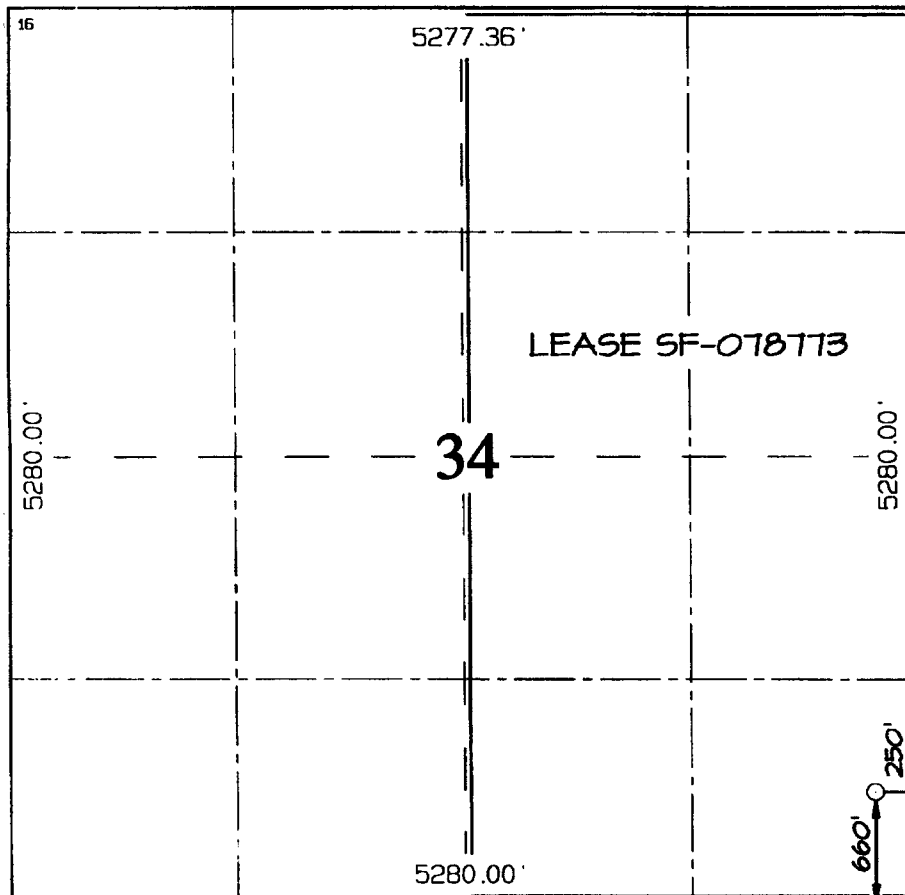
¹⁰ Surface Location

UL or lot no.	Section	Township	Range	Lot Idn	Feet from the	North/South line	Feet from the	East/West line	County
P	34	31N	5W		660	SOUTH	250	EAST	RIO ARRIBA

¹¹ Bottom Hole Location If Different From Surface

UL or lot no.	Section	Township	Range	Lot Idn	Feet from the	North/South line	Feet from the	East/West line	County
¹² Dedicated Acres 320.0 Acres - (E/2)					¹³ Joint or Infill	¹⁴ Consolidation Code	¹⁵ Order No.		

NO ALLOWABLE WILL BE ASSIGNED TO THIS COMPLETION UNTIL ALL INTERESTS HAVE BEEN CONSOLIDATED
OR A NON-STANDARD UNIT HAS BEEN APPROVED BY THE DIVISION



¹⁷ OPERATOR CERTIFICATION

I hereby certify that the information
contained herein is true and complete
to the best of my knowledge and belief

John C. Thompson
Signature

John C. Thompson
Printed Name

Engineer / Agent
Title

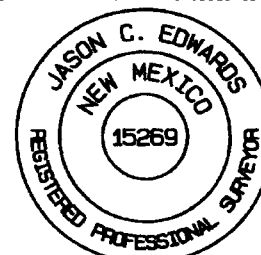
4/1/04
Date

¹⁸ SURVEYOR CERTIFICATION

I hereby certify that the well location
shown on this plat was plotted from field
notes of actual surveys made by me or under
my supervision and that the same is true
and correct to the best of my belief.

Date Revised: MARCH 31, 2004
Date of Survey: JUNE 28, 2002

Signature and Seal of Professional Surveyor



Jason C. Edwards
Certificate Number 15269