

Sec : 07 Twp : 085 Rng : 37E Section Type : NORMAL

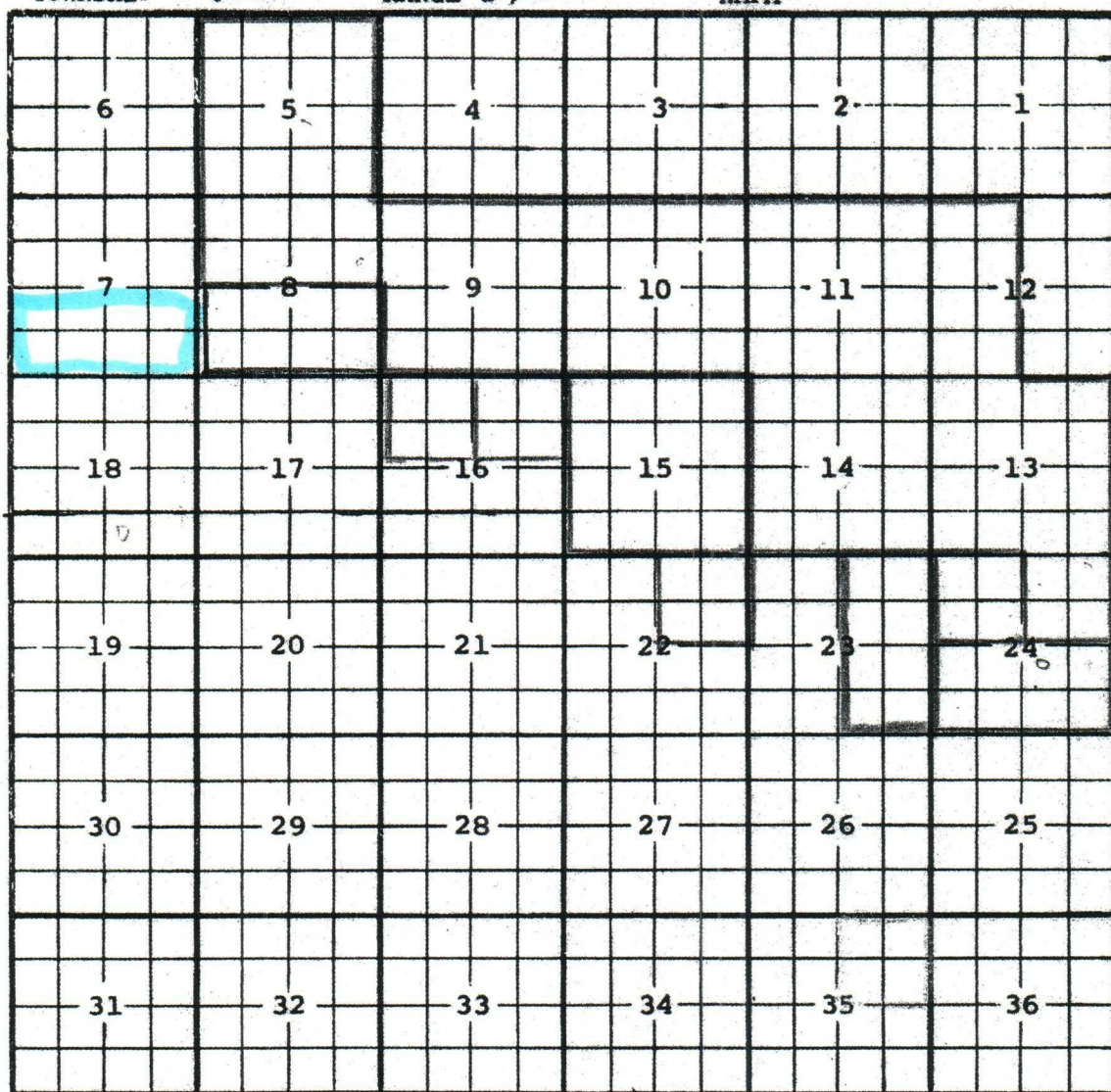
1 39.42 Federal owned	C 40.00 Federal owned	B 40.00 Federal owned	A 40.00 Federal owned
2 39.38 Federal owned	F 40.00 Federal owned	G 40.00 Federal owned	H 40.00 Federal owned
3 39.34 Federal owned	K 40.00 Federal owned	J 40.00 Federal owned	I 40.00 Federal owned
4 39.30 Federal owned	N 40.00 Federal owned	O 40.00 Federal owned	P 40.00 Federal owned

78.64

78.64  
8  
158.64  
16  
318.64

COUNTY Roosevelt POOL Bluitt-San Andres Associated

TOWNSHIP 8 South RANGE 37 East NMFM



Description: All Sec 5;  $\frac{N}{4}$  Sec 8; All Sec 9, 10 & 11;  $\frac{W}{2}$  Sec 12;  
All Sec 13 & 14;  $\frac{NE}{4}$  Sec 24 (R-1670-1, 7-73-69)  
Ext:  $\frac{NW}{4}$  Sec 24 (R-2853, 11-1-69) -  $\frac{S}{2}$  Sec 24 (R-3995, 8-1-70)  
- All Sec 15 (R-4242, 2-1-76) Ext:  $\frac{NE}{4}$  Sec 22 (R-6170, 11-1-79)  
Ext:  $\frac{E}{2}$  Sec 23 (R-7048, 8-9-1982)  
Ext:  $\frac{NE}{4}$  Sec 16 (R-11475, 10-24-00) Ext:  $\frac{NW}{4}$  Sec 16 (R-11533, 2-8-01)  
Ext:  $\frac{S}{2}$  Sec 8 (R-12046, 11-3-03)



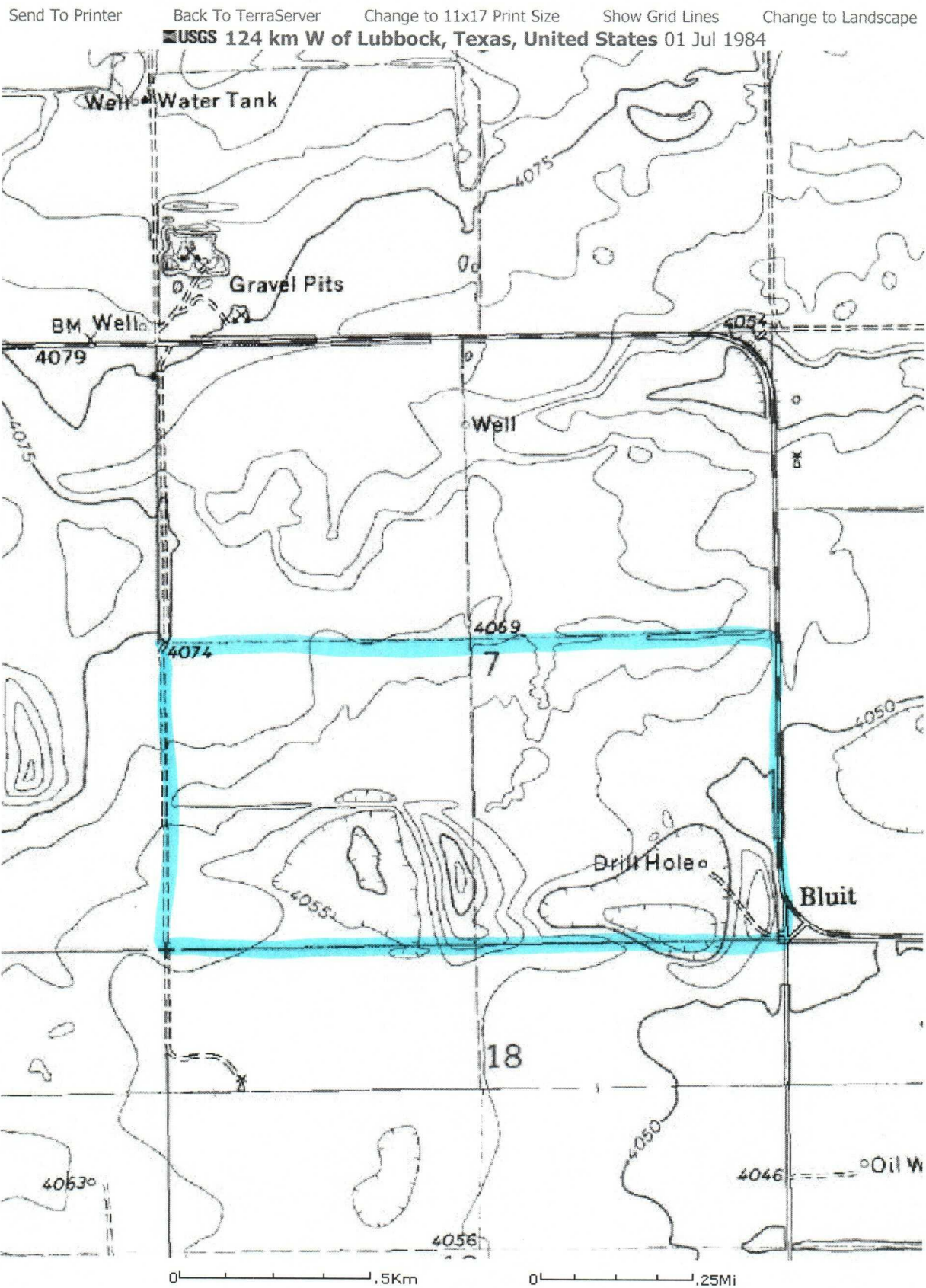


Image courtesy of the U.S. Geological Survey  
© 2004 Microsoft Corporation. **Terms of Use** **Privacy Statement**

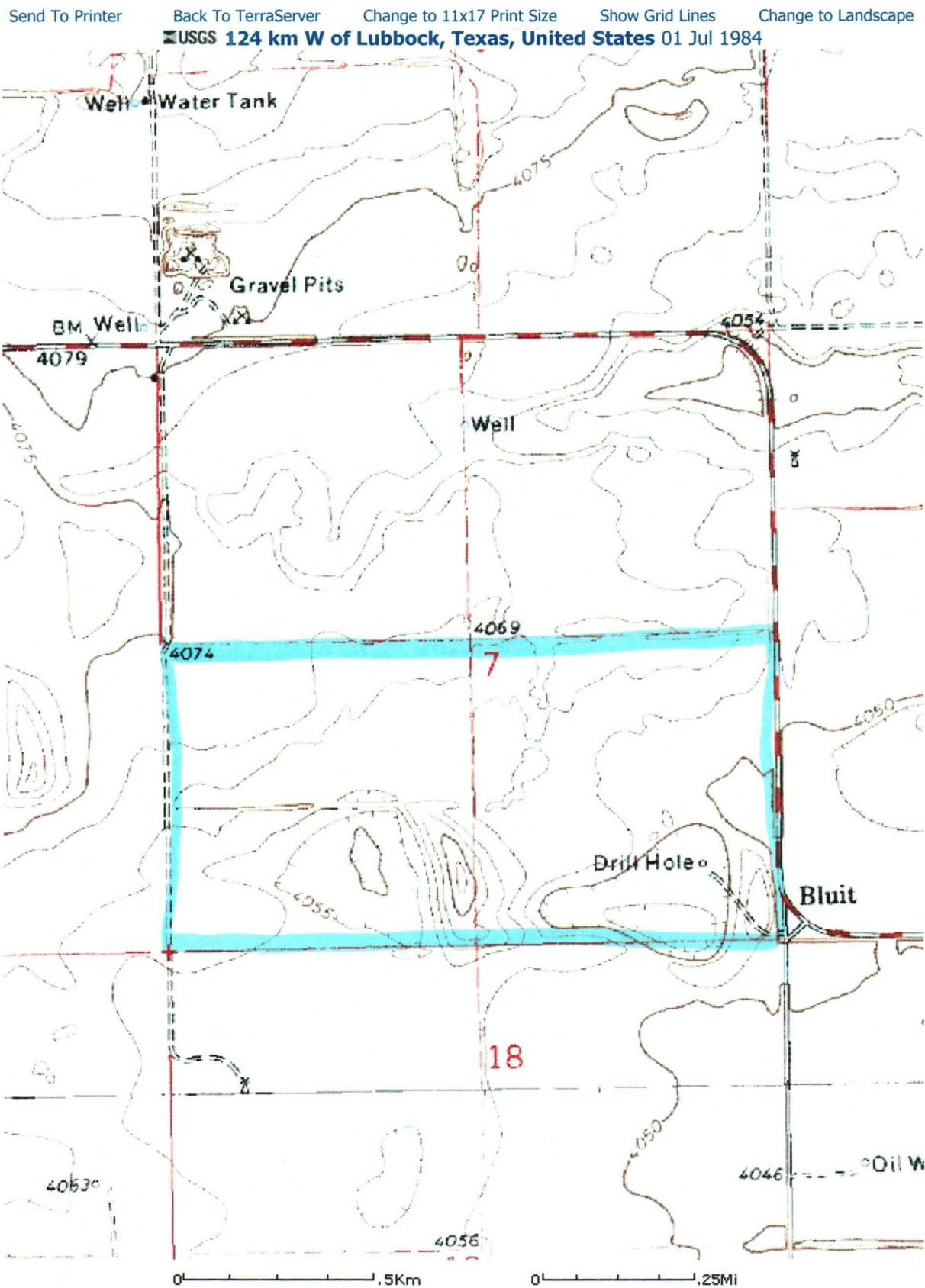


Image courtesy of the U.S. Geological Survey  
© 2004 Microsoft Corporation. [Terms of Use](#) [Privacy Statement](#)



[Send To Printer](#)

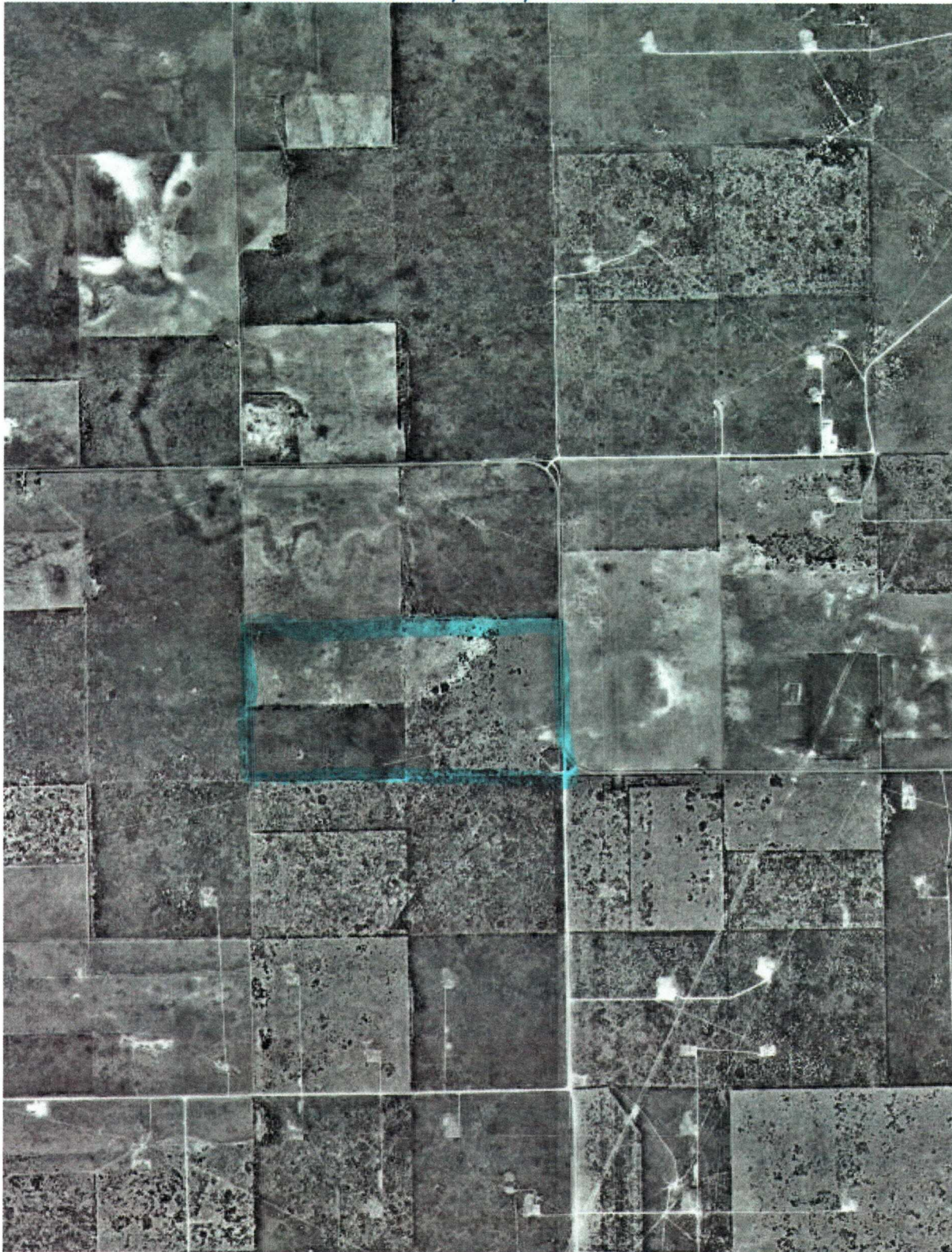
[Back To TerraServer](#)

[Change to 11x17 Print Size](#)

[Show Grid Lines](#)

[Change to Landscape](#)

**USGS 124 km W of Lubbock, Texas, United States 01 Nov 1997**



0 1Km

0 0.5Mi

Image courtesy of the U.S. Geological Survey

© 2004 Microsoft Corporation.

[Terms of Use](#)

[Privacy Statement](#)



[Send To Printer](#)

[Back To TerraServer](#)

[Change to 11x17 Print Size](#)

[Show Grid Lines](#)

[Change to Landscape](#)

**USGS 373 km NE of Ciudad Juárez, Chihuahua, Mexico 01 Nov 1997**



0 1 2 3 4 5 Km

0 1 2 3 4 5 Mi

Image courtesy of the U.S. Geological Survey

© 2004 Microsoft Corporation.

[Terms of Use](#)

[Privacy Statement](#)



[Send To Printer](#)

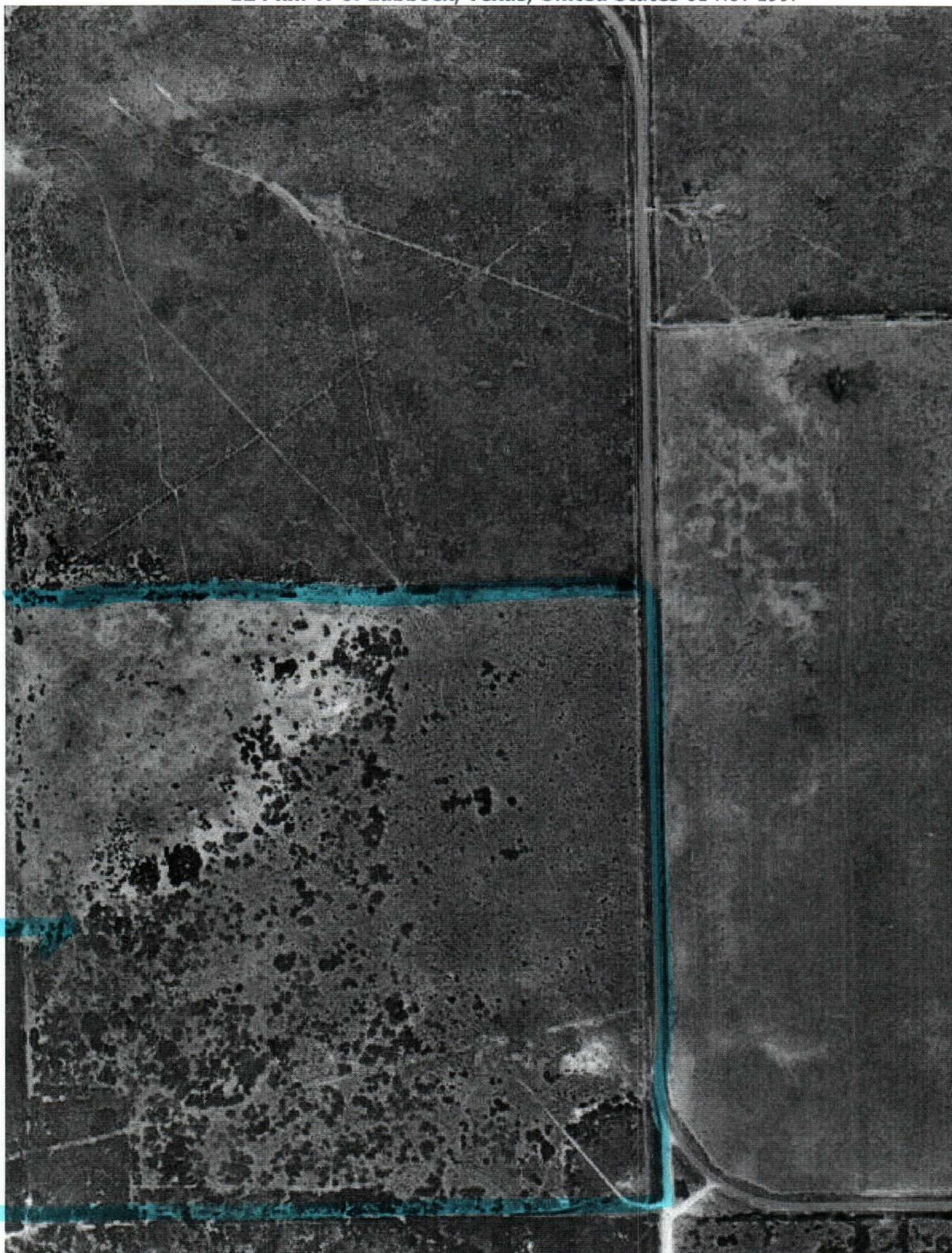
[Back To TerraServer](#)

[Change to 11x17 Print Size](#)

[Show Grid Lines](#)

[Change to Landscape](#)

**USGS 124 km W of Lubbock, Texas, United States 01 Nov 1997**



0 200M

0 200yd

Image courtesy of the U.S. Geological Survey

© 2004 Microsoft Corporation.

[Terms of Use](#)

[Privacy Statement](#)



[Send To Printer](#)

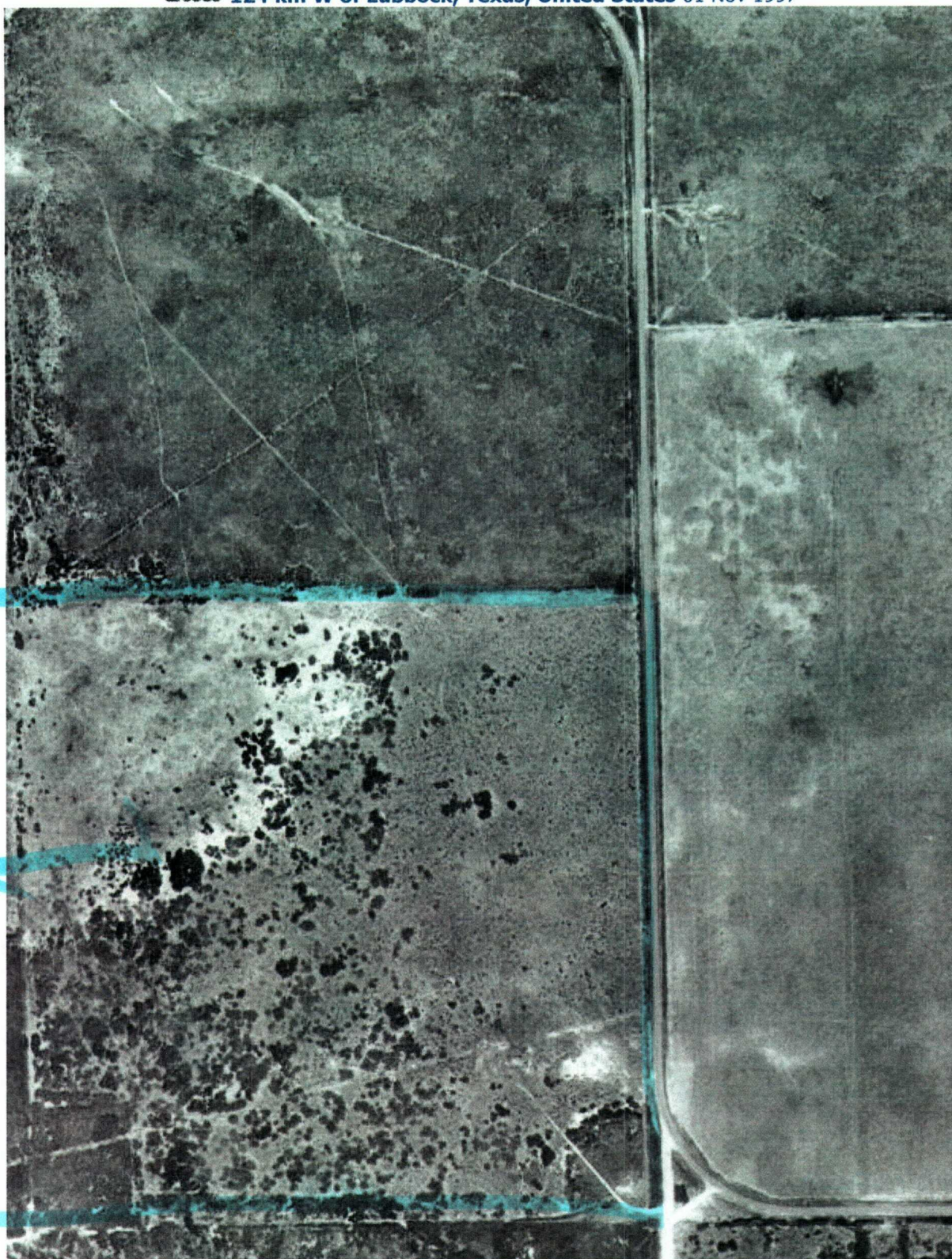
[Back To TerraServer](#)

[Change to 11x17 Print Size](#)

[Show Grid Lines](#)

[Change to Landscape](#)

**USGS 124 km W of Lubbock, Texas, United States 01 Nov 1997**



0 200M

0 200yd

Image courtesy of the U.S. Geological Survey

© 2004 Microsoft Corporation. [Terms of Use](#) [Privacy Statement](#)



Base

NSL BLUIT, 6

April 30, 2004

Saga Petroleum, L.L.C.  
415 W. Wall - Suite 1900  
Midland, Texas 79701

Telefax No. (915) 684-4293

Attention: Bonnie Husband

*Administrative Order NSL-4713*

Dear Ms. Husband:

Reference is made to the following: (i) your application dated February 15, 2002; and (ii) the Division's records, including the file on Division Administrative Orders NSP-1683, dated January 20, 1994, NSP-1684, dated January 20, 1994, and NSL-4577, dated April 24, 2001: all concerning Saga Petroleum, L.L.C.'s ("Saga") request for an exception to **Rule 2 (b)** of the "*Special Rules and Regulations for the Bluit-San Andres Associated Pool*," as promulgated by Division Order No. R-5353, as amended, for a non-standard Bluit-San Andres infill gas well location within a standard 320-acre lay-down gas spacing and proration unit for the Bluit-San Andres Associated Pool (6880) comprising the N/2 of Section 13, Township 8 South, Range 37 East, NMPM, Roosevelt County, New Mexico.

This 320-acre gas spacing and proration unit is currently simultaneously dedicated to Saga's: (i) Bluit 13 "A" Federal Well No. 1 (API No. 30-041-20849), located at an unorthodox gas well location 660 feet from the North and East lines (Unit A) of Section 13; (ii) Bluit SA "B" Federal Well No. 3 (API No. 30-041-20211), located at an unorthodox gas well location 587 feet from the North line and 1849 feet from the West line (Unit C) of Section 13; (iii) Bluit "13" Federal Well No. 6 (API No. 30-041-20852), located at an unorthodox gas well location 1980 feet from the North and West lines (Unit F) of Section 13; and (iv) Bluit 13 "A" Federal Well No. 8 (API No. 30-041-20175), located at an unorthodox gas well location 1980 feet from the North line and 660 feet from the East line (Unit H) of Section 13.

This application has been duly filed under the provisions of Division Rule 104.F, revised by Division Order No. R-11231, issued by the New Mexico Oil Conservation Commission in Case No. 12119 on August 12, 1999, and the applicable provisions of the rules governing the Bluit-San Andres Associated Pool.

By the authority granted me under the provisions of: (i) **Rule 2 (c)** of the "*General Rules and Regulations for the Associated Oil and Gas Pools of Northwest and Southeast New Mexico*," as promulgated by Division Order No. R-5353, as amended; and (ii) Division Rule 104.F (2), as revised, the following described well located at an unorthodox infill gas well location within this 320-acre unit, is hereby approved: Director

LORI WROTEBERY



**Bluitt SA "13" Federal Well No. 5  
1980' FNL & 660' FWL (Unit E)  
(API No. 30-41-20213).**

Further, all five of the above-described wells and 320-acre gas spacing and proration unit will be subject to all existing rules, regulations, policies, and procedures applicable to the Associated Oil and Gas Pools and to the Bluitt-San Andres Associated Pool.

Division Administrative Order NSP-1683, dated January 20, 1994, which order authorized a 160-acre non-standard gas spacing and proration unit for Bluitt-San Andres Associated Pool gas production comprising the NE/4 of Section 13 and had dedicated thereon the above-described Bluitt "13" Federal Well No. 6 (API No. 30-041-20852), shall be placed in abeyance until further notice.

Sincerely,

Lori Wrotenbery  
Director

LW/MES/kv

cc: New Mexico Oil Conservation Division - Hobbs  
U. S. Bureau of Land Management - Roswell  
File: NSP-1683  
NSP-1684  
NSL-4577

cc: New Mexico Oil Conservation Division - Hobbs  
New Mexico State Land Office - Santa Fe  
U. S. Bureau of Land Management - Roswell

LW/mes

LORI WROTENBERY  
Director

STATE OF NEW MEXICO  
OIL CONSERVATION DIVISION

(4) Jurisdiction of this cause is retained for the entry of such further orders as the Division may deem necessary.