



CONTINENTAL OIL COMPANY

P. O. Box 460
Hobbs, New Mexico
May 21, 1970

DHC - 46
Due June 15

New Mexico Oil Conservation Commission (2)✓
P. O. Box 2088
Santa Fe, New Mexico

Attention of Mr. A. L. Porter, Jr., Secretary Director

Gentlemen:

Subject: Application for Downhole Commingling, Lockhart A-35
Well No. 2 - F-35-21S-37E

Continental Oil Company, Box 460, Hobbs, New Mexico, as operator of the Lockhart A-35 Lease respectfully requests administrative approval under the provisions of Order No. R-3845 to commingle in the well bore production from the Wantz Abo and Blinebry Pools in its Lockhart A-35 Well No. 2, located in Unit F of Section 35, T21S, R37E, Lea County, New Mexico. This dual completion was authorized by administrative Order No. MC-1801. The attached plat shows the Lockhart A-35 Lease outlined in red and the No. 2 well by the red circle.

Attached hereto are forms C-116 showing the results of tests taken within the last 30 days on the two zones in this well. As shown by these tests, the combined producing rate is 30 barrels oil, 4 barrels water and 72 MCF gas per day. Both zones are being pumped.

On February 18, 1970, the bottom hole pressure in the Abo zone was measured in Lockhart B-35 No. 2 a NE diagonal offset, and was 754 psi after shut in of 24 hours. The estimated bottom hole pressure after 24 hour shut in of the Blinebry zone, is 300 psi based on the surface shut in pressure and the measured fluid level. The commingled production will be artificially lifted.

Attached hereto is a production curve for each zone. During the past year the Abo has produced 60% of the combined production from both zones.

The fluid from these two pools has been commingled at the tank battery for a number of years and there has been no indication of incompatibility. Both crudes are typical Permian high gravity crude.

NMOCC
Page 2
May 21, 1970

Since the crudes have been commingled at the tank battery before sale to the pipe line, there should be no difference between the value of the commingled stream at the surface and that commingled within the well bore.

The Lockhart A-35 is a federal lease and a copy of this application is being furnished the U.S.G.S. and to all offset operators. Your further handling and approval of this application will be sincerely appreciated.

Yours very truly,

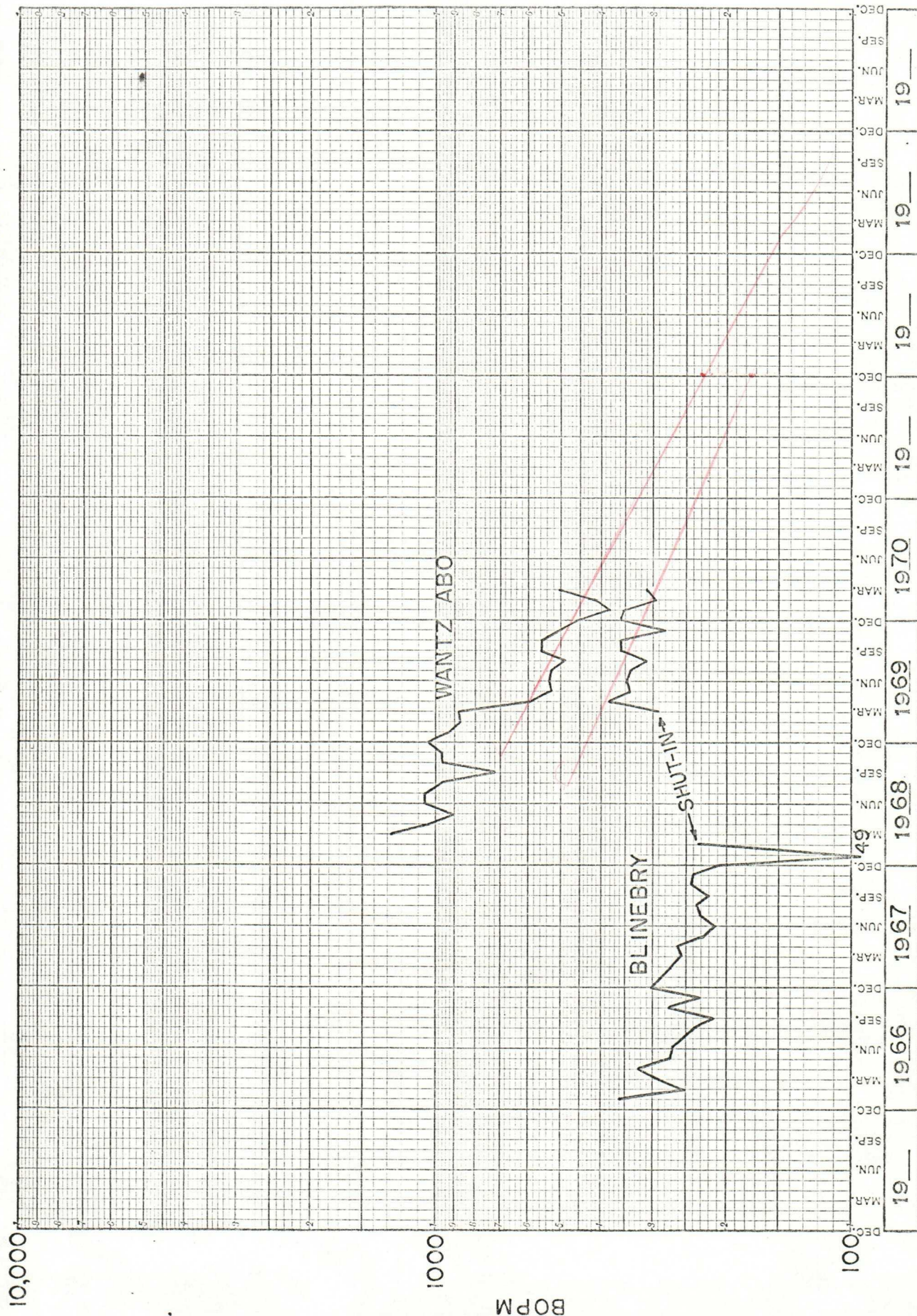


GCJ-VM

CC: NMOCC - Hobbs
USGS - Hobbs (2)
R. L. Adams
J. J. Bowden
J. W. Kellahin
Marathon Oil Company, Box 220, Hobbs, New Mexico
Cities Service Oil Company, Box 69, Hobbs, New Mexico
Moran Prod. Co., Box 1919, Hobbs, New Mexico
Humble Oil & Ref. Co., Box 2100, Hobbs, New Mexico
Atlantic Richfield Co., Box 1978, Roswell, New Mexico



LOCKHART A-35 NO. 2



C-116
Revised 1-1-65

No well will be assigned an allowable greater than the amount of oil produced on the official test.

During gas-oil ratio test, each well shall be produced at a rate not exceeding the top unit allowable for the pool in which well is located by more than 25 percent. Operator is encouraged to take advantage of this 25 percent tolerance in order that well can be assigned increased allowables when authorized by the Commission.

Gas volumes must be reported in MCF measured at a pressure base of 15.025 psia and a temperature of 60° F. Specific gravity base will be 0.60.

Report casing pressure in lieu of tubing pressure for any well producing through casing.

Mail original and one copy of this report to the district office of the New Mexico Oil Conservation Commission in accordance with Rule 301 and appropriate pool rules.

I hereby certify that the above information is true and complete to the best of my knowledge and belief.

[Signature]
(Signature)

Administrative Section Chief

NMOCC (2) FILE (2)

May 20, 1970

(Date)

NEW MEXICO OIL CONSERVATION COMMISSION
GAS-OIL RATIO TESTS

C-116
Revised 1-1-65

Operator		Pool				County									
Continental Oil Company		Blinebry				Lea									
Address		P. O. Box 460, Hobbs, New Mexico 88240				TYPE OF TEST - (X)									
						Scheduled <input type="checkbox"/> Special <input checked="" type="checkbox"/>									
LEASE NAME	WELL NO.	LOCATION				DATE OF TEST	STATUS	CHOKE SIZE	TBG. PRESS.	DAILY ALLOW-ABLE	LENGTH OF TEST HOURS	Completion <input type="checkbox"/> Special <input checked="" type="checkbox"/>			
		U	S	T	R							WATER BBLs.	PROD. DURING TEST	GAS M.C.F.	GAS - OIL RATIO CU.FT./BBL
Lockhart A-35	2	F	35	21	37	5-1-70	P open	25	13	24	1	40	11	13	1,180

No well will be assigned an allowable greater than the amount of oil produced on the official test.

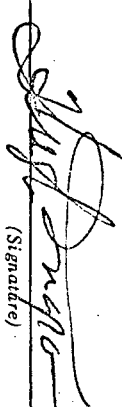
During gas-oil ratio test, each well shall be produced at a rate not exceeding the top unit allowable for the pool in which well is located by more than 25 percent. Operator is encouraged to take advantage of this 25 percent tolerance in order that well can be assigned increased allowables when authorized by the Commission.

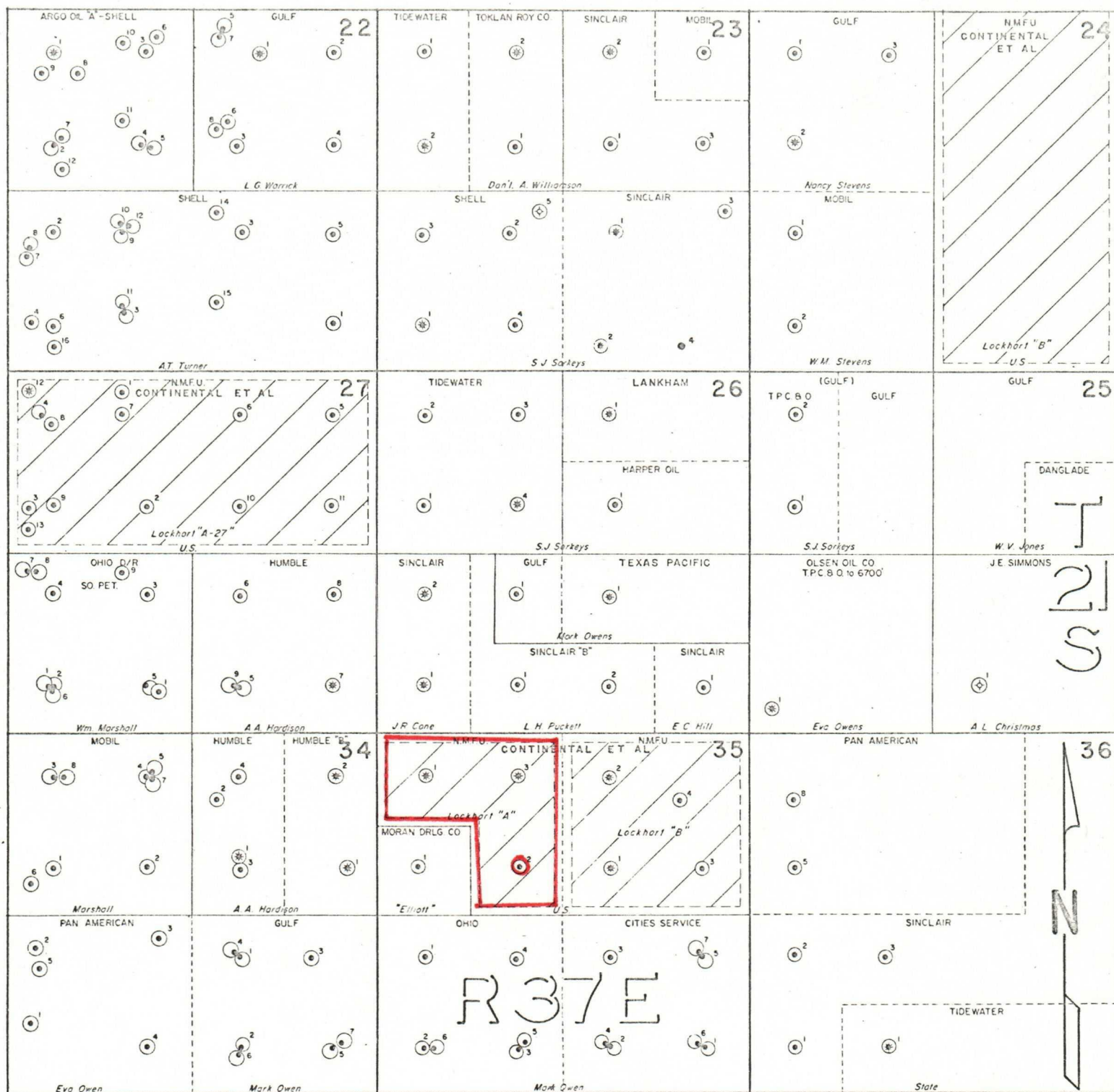
Gas volumes must be reported in MCF measured at a pressure base of 15.025 psia and a temperature of 60° F. Specific gravity base will be 0.60.

Report casing pressure in lieu of tubing pressure for any well producing through casing.

Mail original and one copy of this report to the district office of the New Mexico Oil Conservation Commission in accordance with Rule 301 and appropriate pool rules.

I hereby certify that the above information is true and complete to the best of my knowledge and belief.


(Signature)
Administrative Section Chief
(Title)
May 20, 1970
(Date)



CONTINENTAL OIL COMPANY
 PRODUCTION DEPARTMENT
 HOBBS DIVISION
 LOCKHART A-35 LEASE
 LEA COUNTY, NEW MEXICO

Scale: 1" = 2000'