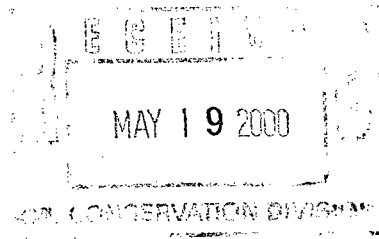


NSP

6/8/00



ENERGY SERVICES

One Williams Center
P.O. Box 3102
Tulsa, Oklahoma 74101
918/573-2000

May 15, 2000

Ms. Lori Wrotenbery
New Mexico Oil Conservation Division
2040 S. Pacheco
Santa Fe, NM 87505

Re: Non-Standard Gas Proration Unit
Rosa Unit #166 (API# 30-039-26275)
1165' FNL, 995' FEL
Section 30(A)-T31N-R5W
Rio Arriba County, NM
Blanco Mesa Verde

Dear Ms. Wrotenbery,

According to rule 605.B(2)(a) Williams Production Company hereby requests administrative approval for a non-standard gas proration unit in the Blanco Mesa Verde pool for the referenced well. The proposed spacing unit is north half of Section 30, T31N, R5W, which is 232.69 acres due to a variation in the legal subdivision of the U.S. Public Land Surveys.

As the Unit Operator of the Rosa Unit, Williams Production is the only offset operator. Attached is a plat indicating the well location and proposed spacing unit.

Thank you for your consideration and approval of this application. If you have any questions, please do not hesitate to call me at (918) 573-6254.

Sincerely,

Ms. Tracy Ross
Ms. Tracy Ross
Production Analyst

CC: BLM Farmington NM
NMOCD Aztec NM

District I
PO Box 1980, Hobbs, NM 88241-1980

District II
PO Drawer DD, Artesia, NM 88211-0719

District III
1000 Rio Brazos Rd., Aztec, NM 87410

District IV
PO Box 2088, Santa Fe, NM 87504-2088

State of New Mexico
Energy, Minerals & Natural Resources Department

OIL CONSERVATION DIVISION
PO Box 2088
Santa Fe, NM 87504-2088

Form C-102
Revised February 21, 1994
Instructions on back
Submit to Appropriate District Office
State Lease - 4 Copies
Fee Lease - 3 Copies

☐ AMENDED REPORT

WELL LOCATION AND ACREAGE DEDICATION PLAT

*API Number 30-039-26275		*Pool Code 72319	*Pool Name Blanco-Mesaverde
*Property Code 17033	*Property Name ROSA UNIT		*Well Number 166
*OGRIID No. 120782	*Operator Name WILLIAMS PRODUCTION COMPANY		*Elevation 6360'

10 Surface Location

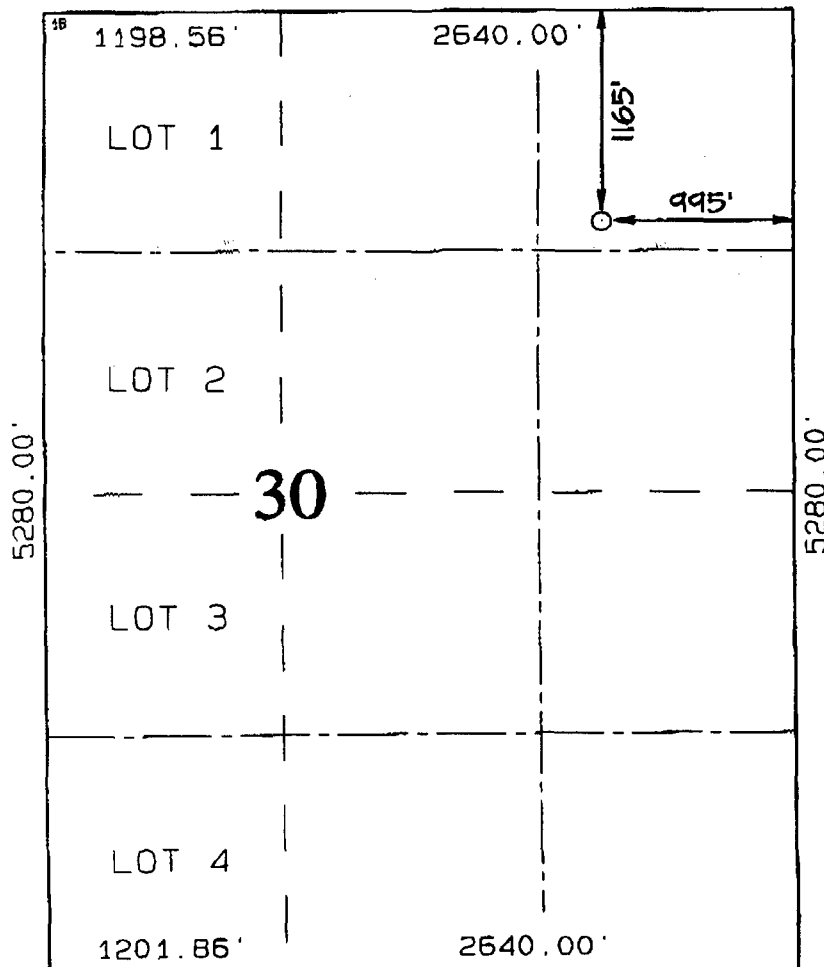
UL or lot no.	Section	Township	Range	Lot Idn	Feet from the	North/South line	Feet from the	East/West line	County
A	30	31N	5W		1165	NORTH	995	EAST	RIO ARriba

11 Bottom Hole Location If Different From Surface

UL or lot no.	Section	Township	Range	Lot Idn	Feet from the	North/South line	Feet from the	East/West line	County

*Dedicated Acres 232.69	*Joint or Infill	*Consolidation Code	*Order No.
----------------------------	------------------	---------------------	------------

NO ALLOWABLE WILL BE ASSIGNED TO THIS COMPLETION UNTIL ALL INTERESTS HAVE BEEN CONSOLIDATED OR A NON-STANDARD UNIT HAS BEEN APPROVED BY THE DIVISION



17 OPERATOR CERTIFICATION

I hereby certify that the information contained herein is true and complete to the best of my knowledge and belief

Ms. Tracy Ross
Signature

Ms. Tracy Ross
Printed Name
Production Analyst
Title

05/15/00
Date

18 SURVEYOR CERTIFICATION

I hereby certify that the well location shown on this plat was plotted from field notes of actual surveys made by me or under my supervision, and that the same is true and correct to the best of my belief.

OCTOBER 2, 1999

Date of Survey

Signature and Seal of Surveyor

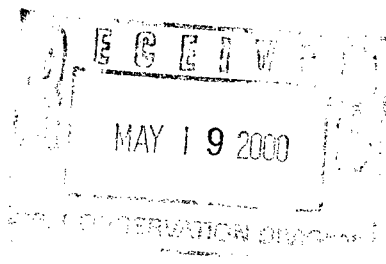
NEALE C. EDWARDS
NEW MEXICO
6857
Certificate Number 6857

NSP

6/8/00



ENERGY SERVICES
One Williams Center
P.O. Box 3102
Tulsa, Oklahoma 74101
918/573-2000



May 15, 2000

Ms. Lori Wrotenbery
New Mexico Oil Conservation Division
2040 S. Pacheco
Santa Fe, NM 87505

Re: Non-Standard Gas Proration Unit
Rosa Unit #166A (API# 30-039-26282)
1680' FNL, 790' FWL
Section 30(F)-T31N-R5W
Rio Arriba County, NM
Blanco Mesa Verde

Dear Ms. Wrotenbery,

According to rule 605.B(2)(a) Williams Production Company hereby requests administrative approval for a non-standard gas proration unit in the Blanco Mesa Verde pool for the referenced well. The proposed spacing unit is north half of Section 30, T31N, R5W, which is 232.69 acres due to a variation in the legal subdivision of the U.S. Public Land Surveys.

As the Unit Operator of the Rosa Unit, Williams Production is the only offset operator. Attached is a plat indicating the well location and proposed spacing unit.

Thank you for your consideration and approval of this application. If you have any questions, please do not hesitate to call me at (918) 573-6254.

Sincerely,

Ms. Tracy Ross
Ms. Tracy Ross
Production Analyst

CC: BLM Farmington NM
NMOCD Aztec NM

District I
PO Box 1980, Hobbs, NM 88241-1980

District II
PO Drawer DD, Artesia, NM 88211-0719

District III
1000 Rio Brazos Rd., Aztec, NM 87410

District IV
PO Box 2088, Santa Fe, NM 87504-2088

State of New Mexico
Energy, Minerals & Natural Resources Department

OIL CONSERVATION DIVISION
PO Box 2088
Santa Fe, NM 87504-2088

Form C-102
Revised February 21, 1994
Instructions on back
Submit to Appropriate District Office
State Lease - 4 Copies
Fee Lease - 3 Copies

☐ AMENDED REPORT

WELL LOCATION AND ACREAGE DEDICATION PLAT

*API Number 30-039-26282		*Pool Code 72319	*Pool Name Blanco-Mesaverde
*Property Code 17033	*Property Name ROSA UNIT		*Well Number 166A
*GRID No. 120782	*Operator Name WILLIAMS PRODUCTION COMPANY		*Elevation 6350'

10 Surface Location

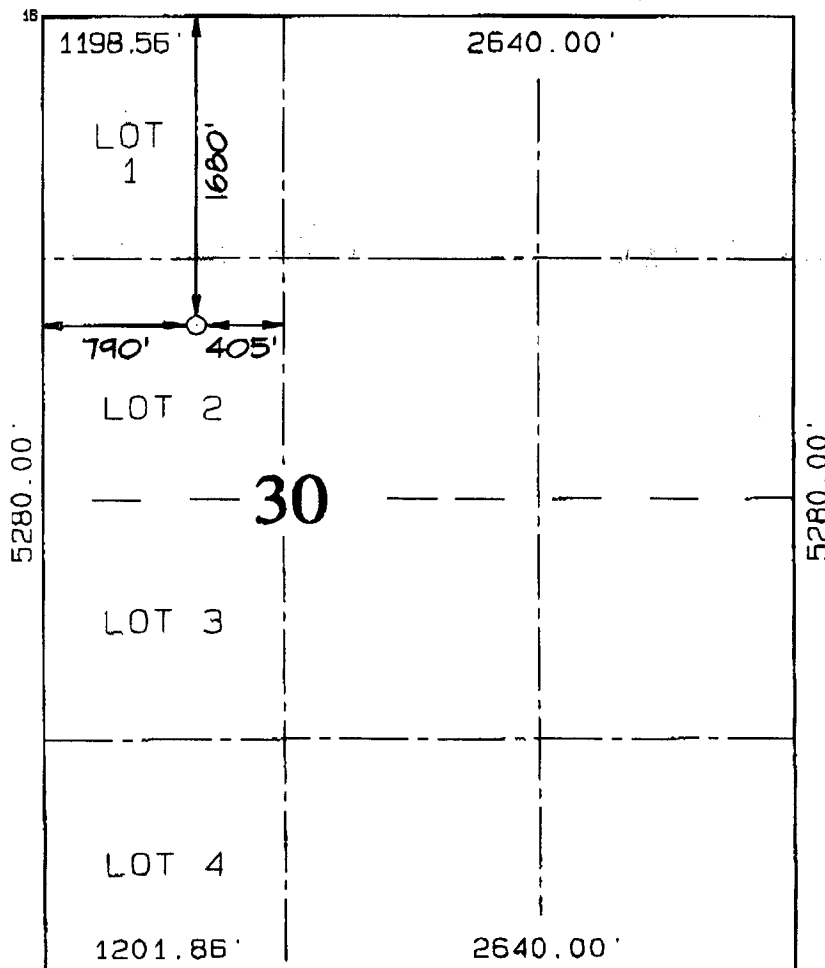
UL or lot no.	Section	Township	Range	Lot 101	Feet from the	North/South line	Feet from the	East/West line	County
F	30	31N	5W		1680	NORTH	790	WEST	RIO ARriba

11 Bottom Hole Location If Different From Surface

UL or lot no.	Section	Township	Range	Lot 101	Feet from the	North/South line	Feet from the	East/West line	County

*Dedicated Acres 232.69	*Joint or Infill	*Consolidation Code	*Order No.
----------------------------	------------------	---------------------	------------

NO ALLOWABLE WILL BE ASSIGNED TO THIS COMPLETION UNTIL ALL INTERESTS HAVE BEEN CONSOLIDATED OR A NON-STANDARD UNIT HAS BEEN APPROVED BY THE DIVISION



17 OPERATOR CERTIFICATION

I hereby certify that the information contained herein is true and complete to the best of my knowledge and belief.

Ms. Tracy Ross
Signature

Ms. Tracy Ross
Printed Name

Production Analyst
Title

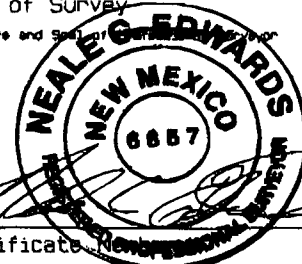
05/15/00
Date

18 SURVEYOR CERTIFICATION

I hereby certify that the well location shown on this plat was plotted from field notes of actual surveys made by me or under my supervision, and that the same is true and correct to the best of my belief.

OCTOBER 23, 1999
Date of Survey

NEALE G. EDWARDS
Signature and Seal of Surveyor



Certificate No. 6857