



DHC-92

G. C. Jamieson
Assistant Division Manager
Production Department
Hobbs Division

Western Hemisphere Petroleum Division
Continental Oil Company
P. O. Box 460
1001 North Turner
Hobbs, New Mexico 88240
(505) 393-4141

RECEIVED

AUG 23 1971

NL CONSERVATION COMM

Recd Sept 12

August 18, 1971

New Mexico Oil Conservation Commission
P. O. Box 2088
Santa Fe, New Mexico 87501

Attention Mr. A. L. Porter, Jr., Secretary Director

Gentlemen:

Application for Downhole Commingling - Lockhart B-35 Well No. 4,
Unit H-35-21S-37E, Lea County, New Mexico

Continental Oil Company, as operator of the Lockhart B-35 Lease, respectfully requests Administrative approval under the provisions of Order No. R-3845, to commingle in the well bore production from Blinebry Oil and Drinkard Oil Pools in the subject well. This dual completion was authorized by Administrative Order No. MC-1437. The attached plat shows the Lockhart B-35 Lease outlined in red and the No. 4 well by the red circle.

On August 16, 1971, the bottom hole pressures in the Blinebry and Drinkard were measured in the Lockhart B-35 Well No. 3. The Blinebry pressure was measured to be 955 psi after being shut-in for 24 hours. The Drinkard pressure was measured to be 367 psi after being shut-in for 24 hours.

Attached is Form C-116 indicating the latest well tests. Also attached is a production decline curve for each zone. Anticipated production from the well after commingling is 25 BOPD by pumping.

The fluid from these two pools has been commingled at the battery for a number of years and there has been no indication of incompatibility. Both crudes are typical Permian high gravity crude.

New Mexico Oil Conservation Commission
Page 2
August 18, 1971

Your further handling and approval of this application will be
sincerely appreciated.

Yours very truly,

A handwritten signature in cursive script, appearing to read "S. C. James", written in dark ink.

dw

Enc - 3

Copies to:

New Mexico Oil Conservation Commission
P. O. Box 1980
Hobbs, New Mexico 88240

United States Geological Survey
P. O. Box 1157
Hobbs, New Mexico 88240

Off-Set Operators
RLA: JJB: JWK:

Off-Set Operators

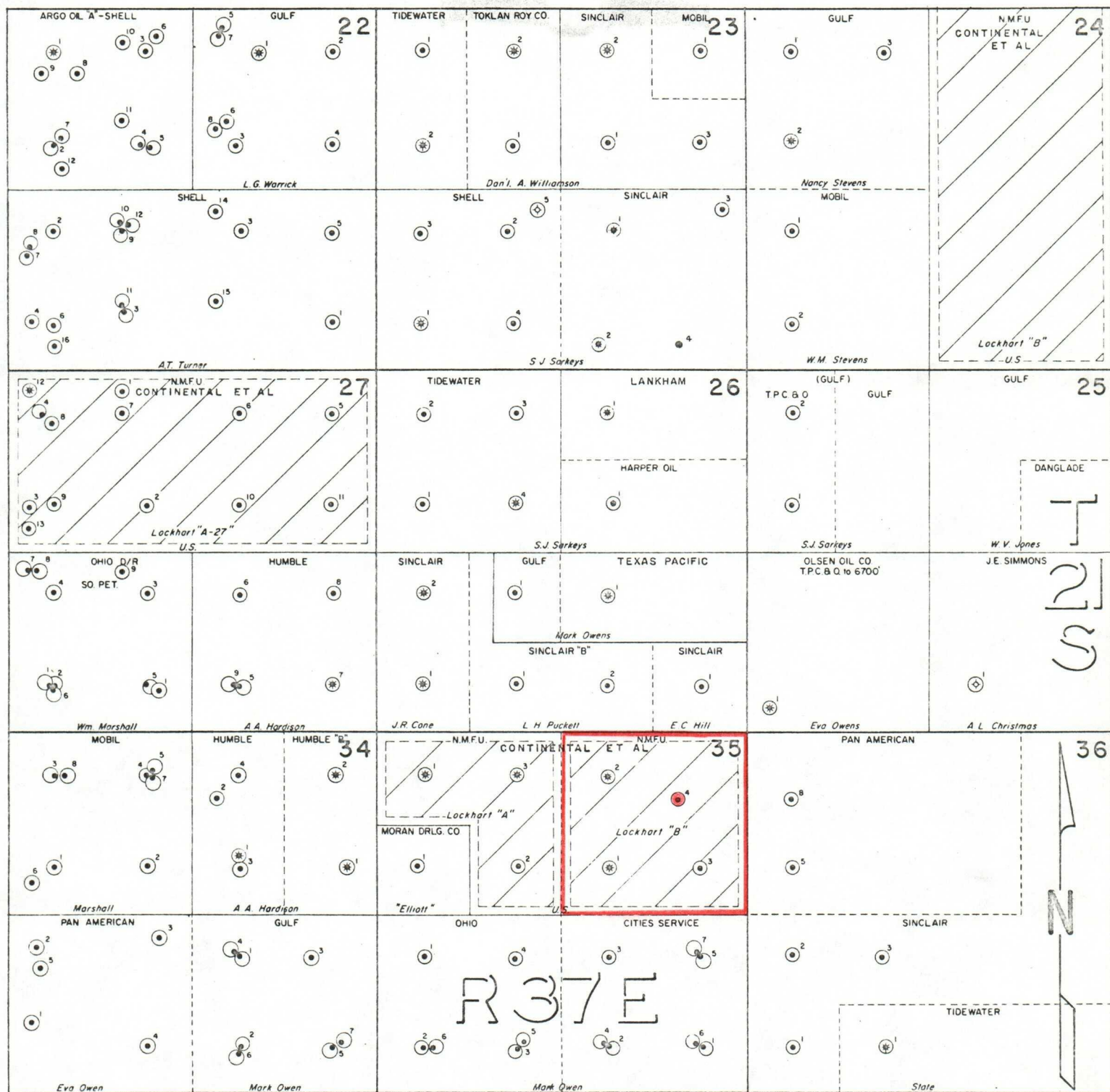
Atlantic Richfield Company
P. O. Box 1978
Roswell, New Mexico 88240

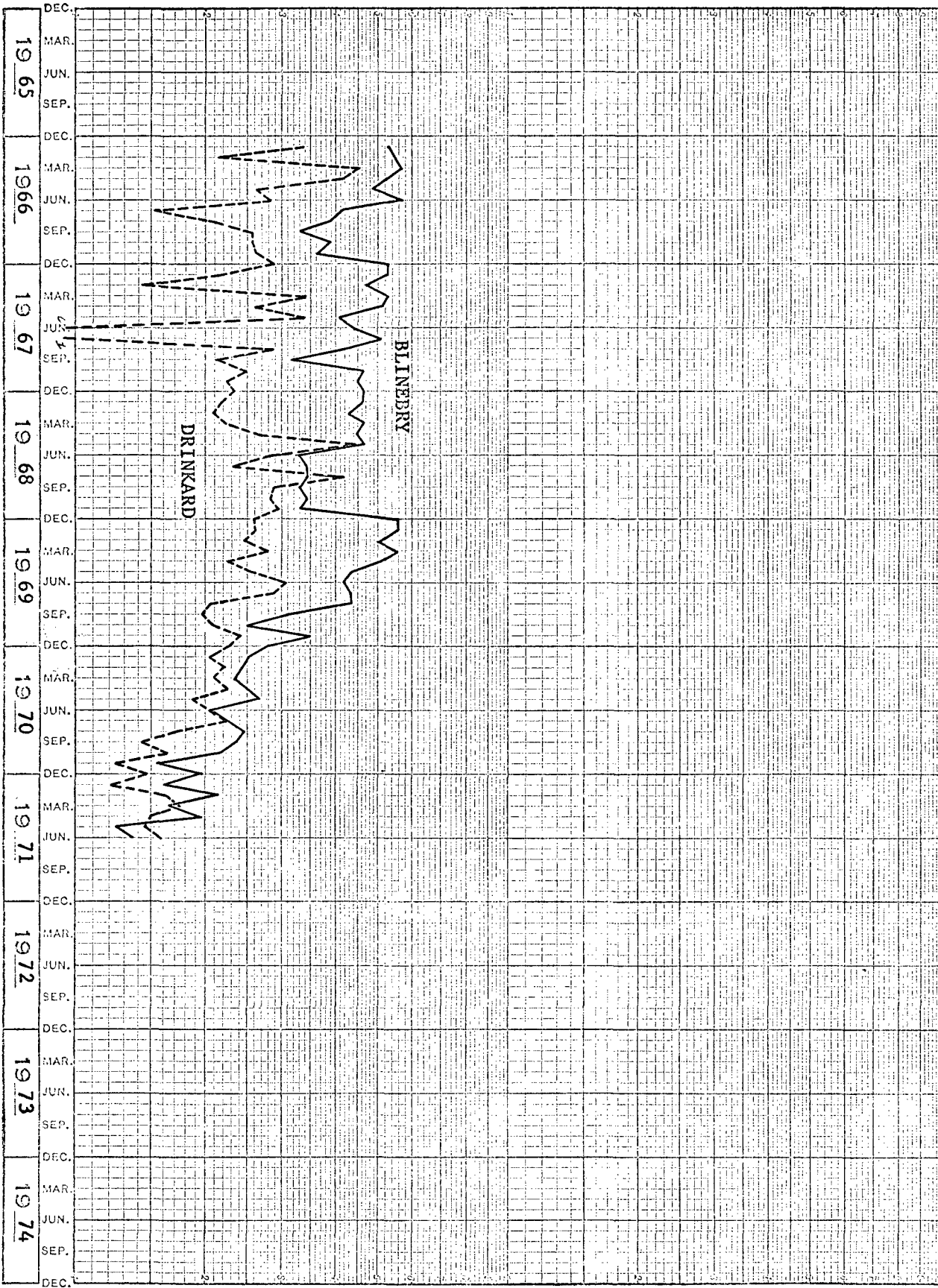
AMOCO Producing Company
P. O. Box 68
Hobbs, New Mexico 88240

Cities Service Oil Company
P. O. Box 69
Hobbs, New Mexico 88240

Chevron Oil Company
P. O. Box 1660
Midland, Texas 79701

Marathon Oil Company
P. O. Box 220
Hobbs, New Mexico 88240





NEW MEXICO OIL CONSERVATION COMMISSION
GAS-OIL RATIO TESTS

C-116
Revised 1-1-65

Operator		Pool		County											
CONTINENTAL OIL COMPANY		BLINEBRY - DRINKARD		Lea											
Address		TYPE OF TEST - (X)		Scheduled <input type="checkbox"/>		Completion <input type="checkbox"/>		Special <input checked="" type="checkbox"/>							
Box 460, Hobbs, New Mexico 88240															
LEASE NAME	WELL NO.	LOCATION				DATE OF TEST	CHOKE SIZE	TBG. PRESS.	DAILY ALLOW-ABLE	LENGTH OF TEST HOURS	PROD. DURING TEST			GAS - OIL RATIO CU.FT./BBL	
		U	S	T	R						WATER BBLs.	GRAV. OIL BBLs.	OIL BBLs.		GAS M.C.F.
<u>BLINEBRY</u>															
Lockhart B-35	4	H	35	21	37	8-11-71	P -	900	8	24	1	37	8	47	5,875
<u>DRINKARD</u>															
Lockhart B-35	4	H	35	21	37	8-11-71	F	25/64	400	6	24	0	39	66	11,000

No well will be assigned an allowable greater than the amount of oil produced on the official test.
During gas-oil ratio test, each well shall be produced at a rate not exceeding the top unit allowable for the pool in which well is located by more than 25 percent. Operator is encouraged to take advantage of this 25 percent tolerance in order that well can be assigned increased allowables when authorized by the Commission.
Gas volumes must be reported in MCF measured at a pressure base of 15.025 psia and a temperature of 60° F. Specific gravity base will be 0.60.

Report casing pressure in lieu of testing pressure for any well producing through casing.
Mail original and one copy of this report to the district office of the New Mexico Oil Conservation Commission in accordance with Rule 301 and appropriate pool rules.

I hereby certify that the above information is true and complete to the best of my knowledge and belief.

Administrative Supervisor

August 11, 1971

(Date)