

NSP 8/21/00

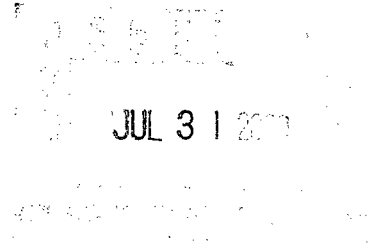


ENERGY SERVICES

One Williams Center
P.O. Box 3102
Tulsa, Oklahoma 74101
918/573-2000

July 26, 2000

Ms. Lori Wrotenbery
New Mexico Oil Conservation Division
2040 S. Pacheco
Santa Fe, NM 87505



Re: Non-Standard Gas Proration Unit
Rosa Unit #171 (API# 30-039-26286)
1825' FNL, 1495' FEL
Section 07(G)-T31N-R5W
Rio Arriba County, NM
Blanco Mesa Verde

Dear Ms. Wrotenbery,

According to rule 605.B(2)(a) Williams Production Company hereby requests administrative approval for a non-standard gas proration unit in the Blanco Mesa Verde pool for the referenced well. The proposed spacing unit is north half of Section 07, T31N, R5W, which is 231.86 acres due to a variation in the legal subdivision of the U.S. Public Land Surveys.

As the Unit Operator of the Rosa Unit, Williams Production is the only offset operator. Attached is a plat indicating the well location and proposed spacing unit.

Thank you for your consideration and approval of this application. If you have any questions, please do not hesitate to call me at (918) 573-6254.

Sincerely,

Ms. Tracy Ross

Ms. Tracy Ross
Production Analyst

CC: BLM Farmington NM
NMOCD Aztec NM

District I
Box 1980, Hobbs, NM 88241-1980
District II
PO Drawer 00, Artesia, NM 88211-0719
District III
1000 Rio Brazos Rd., Aztec, NM 87410
District IV
PO Box 2088, Santa Fe, NM 87504-2088

State of New Mexico
Energy, Minerals & Natural Resources Department

OIL CONSERVATION DIVISION
PO Box 2088
Santa Fe, NM 87504-2088

Form C-102
Revised February 21, 1994
Instructions on back
Submit to Appropriate District Office
State Lease - 4 Copies
Fee Lease - 3 Copies

☐ AMENDED REPORT

WELL LOCATION AND ACREAGE DEDICATION PLAT

*API Number		*Pool Code	*Pool Name
		72319	Blanco - MV
*Property Code	*Property Name		*Well Number
17033	ROSA UNIT		171
*GRID No.	*Operator Name		*Elevation
120782	WILLIAMS PRODUCTION COMPANY		6265'

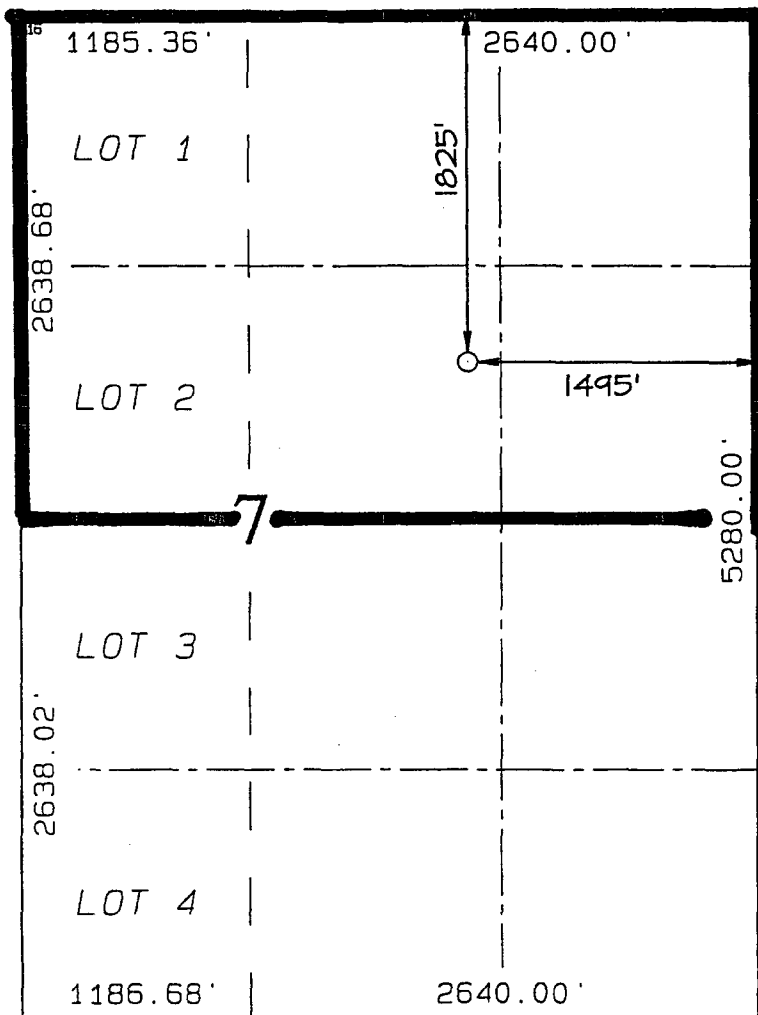
¹⁰ Surface Location

UL or lot no.	Section	Township	Range	Lot Idn	Feet from the	North/South line	Feet from the	East/West line	County
G	7	31N	5W		1825	NORTH	1495	EAST	RIO ARriba

¹¹ Bottom Hole Location If Different From Surface

UL or lot no.	Section	Township	Range	Lot Idn	Feet from the	North/South line	Feet from the	East/West line	County
¹² Dedicated Acres		¹³ Joint or Infill		¹⁴ Consolidation Code		¹⁵ Order No.			
231.86 N/2		I		U					

NO ALLOWABLE WILL BE ASSIGNED TO THIS COMPLETION UNTIL ALL INTERESTS HAVE BEEN CONSOLIDATED OR A NON-STANDARD UNIT HAS BEEN APPROVED BY THE DIVISION



¹⁷ OPERATOR CERTIFICATION
I hereby certify that the information contained herein is true and complete to the best of my knowledge and belief.

Steve Nelson
Signature
Steve Nelson
Printed Name
Agent, Nelson Consulting
Title
January 31, 2000
Date

¹⁸ SURVEYOR CERTIFICATION
I hereby certify that the well location shown on this plat was plotted from field notes of actual surveys made by me or under my supervision, and that the same is true and correct to the best of my belief.

DECEMBER 16, 1999
Date of Survey
Signature and Seal of Professional Surveyor
NEALE C. EDWARDS
NEW MEXICO
6857
Certificate No. 6857

NSP

8/21/00

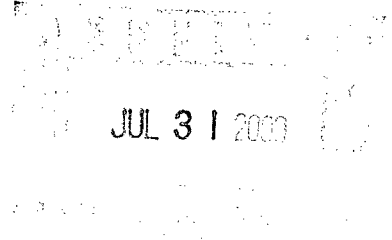


ENERGY SERVICES

One Williams Center
P.O. Box 3102
Tulsa, Oklahoma 74101
918/573-2000

July 26, 2000

Ms. Lori Wrotenbery
New Mexico Oil Conservation Division
2040 S. Pacheco
Santa Fe, NM 87505



Re: Non-Standard Gas Proration Unit
Rosa Unit #171A (API# 30-039-26389)
1830' FNL, 1570' FEL (Surface Location)
Section 07(G)-T31N-R5W
1340' FNL, 660' FWL (Bottom Hole Location)
Section 07(Lot 2)-T31N-R5W
Rio Arriba County, NM
Blanco Mesa Verde

Dear Ms. Wrotenbery,

According to rule 605.B(2)(a) Williams Production Company hereby requests administrative approval for a non-standard gas proration unit in the Blanco Mesa Verde pool for the referenced well. The proposed spacing unit is north half of Section 07, T31N, R5W, which is 231.86 acres due to a variation in the legal subdivision of the U.S. Public Land Surveys.

As the Unit Operator of the Rosa Unit, Williams Production is the only offset operator. Attached is a plat indicating the well location and proposed spacing unit.

Thank you for your consideration and approval of this application. If you have any questions, please do not hesitate to call me at (918) 573-6254.

Sincerely,

Ms. Tracy Ross

Ms. Tracy Ross
Production Analyst

CC: BLM Farmington NM
NMOCD Aztec NM

District I
PO Box 1980, Hobbs, NM 88241-1980

District II
PO Drawer DD, Artesia, NM 88211-0719

District III
1000 Rio Brazos Rd., Aztec, NM 87410

District IV
PO Box 2088, Santa Fe, NM 87504-2088

State of New Mexico
Energy, Minerals & Natural Resources Department

OIL CONSERVATION DIVISION
PO Box 2088
Santa Fe, NM 87504-2088

Form C-102
Revised February 21, 1994
Instructions on back
Submit to Appropriate District Office
State Lease - 4 Copies
Fee Lease - 3 Copies

☐ AMENDED REPORT

WELL LOCATION AND ACREAGE DEDICATION PLAT

*API Number	*Pool Code	*Pool Name
	72319	Blanco - MV
*Property Code	*Property Name	*Well Number
17033	ROSA UNIT	171A
*OGRID No.	*Operator Name	*Elevation
120782	WILLIAMS PRODUCTION COMPANY	6266'

¹⁰ Surface Location

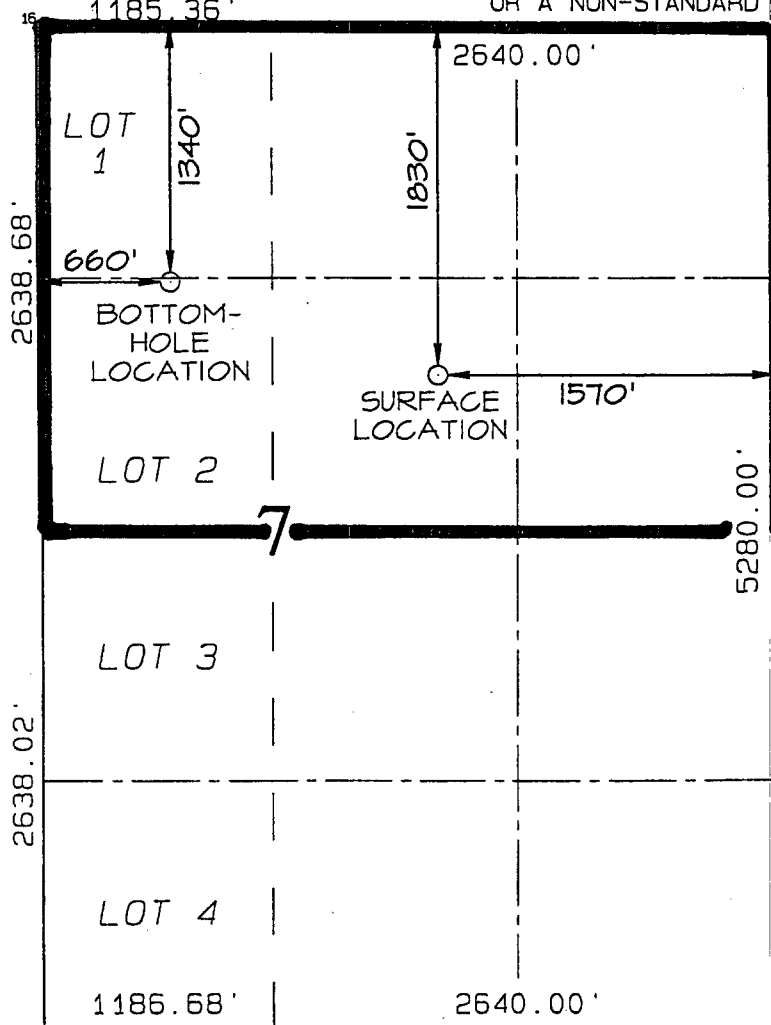
UL or lot no.	Section	Township	Range	Lot Idn	Feet from the	North/South line	Feet from the	East/West line	County
G	7	31N	5W		1830	NORTH	1570	EAST	RIO ARriba

¹¹ Bottom Hole Location If Different From Surface

UL or lot no.	Section	Township	Range	Lot Idn	Feet from the	North/South line	Feet from the	East/West line	County
F	7	31N	5W		1340	NORTH	660	WEST	RIO ARriba

¹² Dedicated Acres	¹³ Joint or Infill	¹⁴ Consolidation Code	¹⁵ Order No.
231.86 N/2	I	U	

NO ALLOWABLE WILL BE ASSIGNED TO THIS COMPLETION UNTIL ALL INTERESTS HAVE BEEN CONSOLIDATED
OR A NON-STANDARD UNIT HAS BEEN APPROVED BY THE DIVISION



OPERATOR CERTIFICATION

I hereby certify that the information contained herein is true and complete to the best of my knowledge and belief

Steve Nelson
Signature

Steve Nelson
Printed Name

Agent, Nelson Consulting
Title

February 24, 2000
Date

¹⁸ SURVEYOR CERTIFICATION

I hereby certify that the well location shown on this plat was plotted from field notes of actual surveys made by me or under my supervision, and that the same is true and correct to the best of my belief.

DECEMBER 16, 1999

Date of Survey

Signature and Seal of Professional Surveyor



Certificate Number 6857