

SHELL OIL COMPANY

P. O. BOX 1509
MIDLAND, TEXAS 79701

DHC-106

Due Jan 23

December 28, 1971

Subject: Application for Downhole Commingling
Sarkeys No. 2, Drinkard Field
Section 23, T-21-S, R-37-E
Lea County, New Mexico

New Mexico Oil Conservation Commission
P. O. Box 2088
Santa Fe, New Mexico 87501

RECEIVED

JAN - 3 1972

Attention Mr. A. L. Porter, Jr., Secretary Director

OIL CONSERVATION COMM,
SANTA FE

Gentlemen:

Shell Oil Company respectfully requests administrative approval under provisions of Order No. R-3845 to commingle in the wellbore production from the Blinebry and Drinkard pools in its Sarkeys No. 2, located in Unit K of Section 23, T-21-S, R-37-E, Lea County, New Mexico. This dual completion was authorized by Administrative Order No. MC1453 dated February 23, 1964. The attached plat depicts the Sarkeys lease as outlined in red and the No. 2 well as indicated by the red circle.

The attached Form C-116 shows the results of production tests taken within the last 30 days on both the Blinebry and Drinkard Zones. Both the Blinebry and Drinkard zones are currently produced by intermittent flow up 2 1/16" OD tubing. The Static bottom hole pressures are estimated at 850 and 500 psi for the Blinebry and Drinkard zones, respectively.

The attached production curves depict the production history for each zone and an estimate of future performance as shown by the dashed line. We propose to allocate production from each zone by means of this curve extension.

Production from the Blinebry and Drinkard formations has been commingled at the tank battery for a number of years with no indication of fluid incompatibility. Since the crudes are commingled at the tank battery before being sold, no difference in value should result by commingling the production within the wellbore.

A copy of this application is being furnished to all offset operators. Your further handling of approval of this application will sincerely be appreciated.

Yours very truly,

R.A. Lowery

For: Jack L. Mahaffey
Production Manager
Mid-Continent Division

RRS:VJ

Attachments

cc - Offset Operators (Per Attached List) New Mexico Oil Conservation Commission
P. O. Box 1980
Hobbs, New Mexico 88240

OFFSET OPERATORS TO
SARKEYS NO. 2
LEA COUNTY, NEW MEXICO

Atlantic Richfield
P. O. Box 1610
Midland, Texas 79701

Continental Oil Corporation
P. O. Box 431
Midland, Texas 79701

Getty Oil Company
P. O. Box 249
Hobbs, New Mexico 88240

Gulf Oil Company - U. S.
P. O. Box 1150
Midland, Texas 79701


NEW MEXICO OIL CONSERVATION COMMISSION
GAS - OIL RATIO TESTS

C-116
Revised 1-1-65

Operator Shell Oil Company		Pool Drinkard		County Lea											
Address Box 1509, Midland, TX 79701		TYPE OF TEST - (X)		Completion <input type="checkbox"/> Scheduled <input type="checkbox"/> Special <input checked="" type="checkbox"/>											
LEASE NAME	WELL NO.	LOCATION			DATE OF TEST	STAGE	CHOKESIZE	TBG. PRESS.	DAILY ALLOWABLE	LENGTH OF TEST HOURS	PROD. DURING TEST			GAS - OIL RATIO CU.FT./BBL.	
		U	S	T							R	WATER BBL.S.	GRAV. OIL		OIL BBL.S.
Sarkeys	2	K	12	16	71		40/64	320	16	24	0	39.5	13	188	14462

No well will be assigned an allowable greater than the amount of oil produced on the official test.
 During gas-oil ratio test, each well shall be produced at a rate not exceeding the top unit allowable for the pool in which well is located by more than 25 percent. Operator is encouraged to take advantage of this 25 percent tolerance in order that well can be assigned increased allowables when authorized by the Commission.
 Gas volumes must be reported in MCF measured at a pressure base of 15.025 psia and a temperature of 60° F. Specific gravity base will be 0.60.
 Report casing pressure in lieu of tubing pressure for any well producing through casing.
 Mail original and one copy of this report to the district office of the New Mexico Oil Conservation Commission in accordance with Rule 301 and appropriate pool rules.

I hereby certify that the above information is true and complete to the best of my knowledge and belief.

 **R. A. Halverson**
 (Signature)
 Product Accounting Supervisor
 (Title)
 December 27, 1971
 (Date)

NEW MEXICO OIL CONSERVATION COMMISSION
GAS-OIL RATIO TESTS

C-1116
Revised 1-1-65

Operator Shell Oil Company		Pool Blinebry Oil		County Lea											
Address P. O. Box 1509, Midland, Texas 79701		TYPE OF TEST - (X)		Completion <input type="checkbox"/> Special <input checked="" type="checkbox"/>											
LEASE NAME	WELL NO.	LOCATION			DATE OF TEST	STANDARD	CHOKE SIZE	TBG. PRESS.	DAILY ALLOW-ABLE	LENGTH OF TEST HOURS	PROD. DURING TEST			GAS - OIL RATIO CU.FT./BBL.	
		U	S	T							R	WATER BBLs.	GRAV. OIL		OIL BBLs.
Sarkeys	2	K	23	21	37	12-17	PL40/64	-	8	24	0	38.5	9	220	24444

No well will be assigned an allowable greater than the amount of oil produced on the official test.

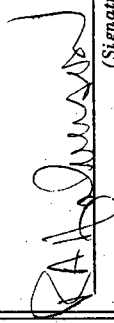
During gas-oil ratio test, each well shall be produced at a rate not exceeding the top unit allowable for the pool in which well is located by more than 25 percent. Operator is encouraged to take advantage of this 25 percent tolerance in order that well can be assigned increased allowables when authorized by the Commission.

Gas volumes must be reported in MCF measured at a pressure base of 15.025 psia and a temperature of 60° F. Specific gravity base will be 0.60.

Report casing pressure in lieu of tubing pressure for any well producing through casing.

Mail original and one copy of this report to the district office of the New Mexico Oil Conservation Commission in accordance with Rule 301 and appropriate pool rules.

I hereby certify that the above information is true and complete to the best of my knowledge and belief.


(Signature)

R. A. Halverson
(Title)

Product Accounting Supervisor

12-21-71

(Date)

SARKEYS 2 BLINEBKY

MONTHLY OIL PRODUCTION

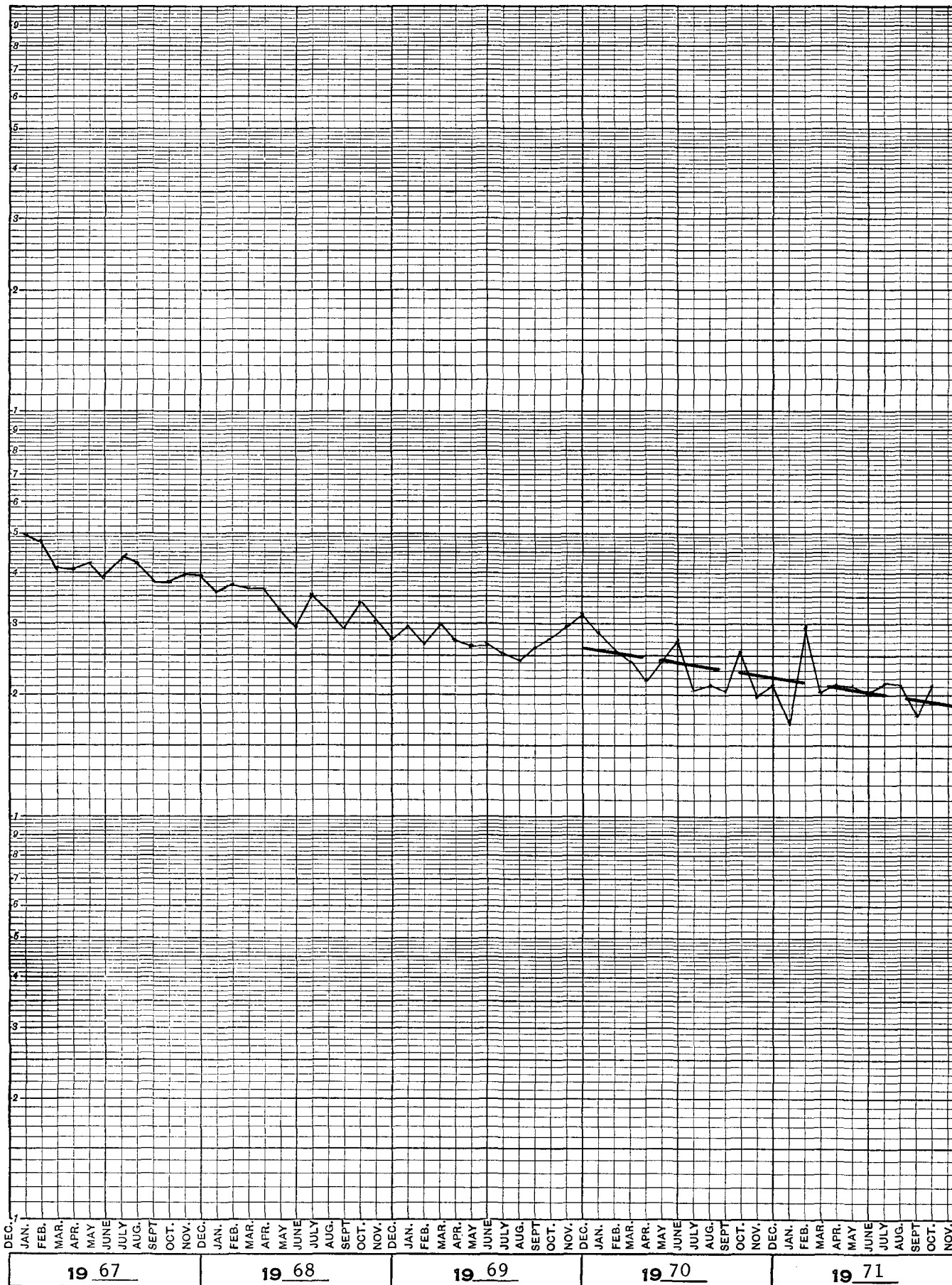
10,000

1,000

100

10

BOPM



NO. 4257. TEN YEARS BY MONTHS X 3 3-INCH CYCLES RATIO RULING

codex IN STOCK DIRECT FROM CODEX BOOK CO. INC. NORWOOD, MASS. 02062

PRINTED IN U. S. A.

SARKEYS 2 DRINKARD

MONTHLY OIL PRODUCTION

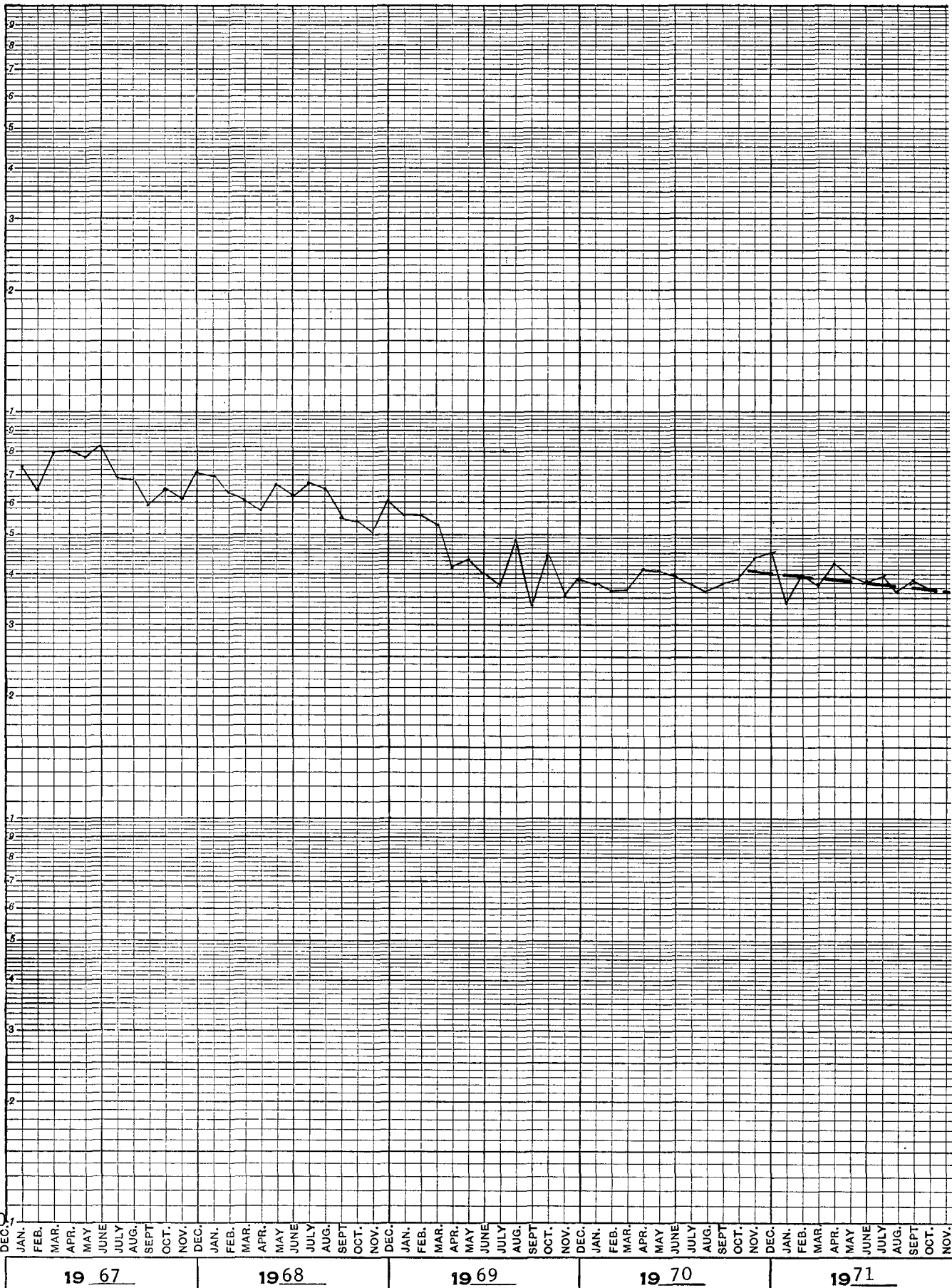
10,000

1,000

100

10

BOPM



19 67

1968

19 69

19 70

1971

NO. 4257. TEN YEARS BY MONTHS X 3 3-INCH CYCLES RATIO RULING
IN STOCK DIRECT FROM CODEX BOOK CO. INC. NORWOOD, MASS. 02062
PRINTED IN U.S.A.

codex®
GRAPH PAPER

