

District I
1625 N. French Drive, Hobbs, NM 88240
District II
1301 W. Grand Avenue, Artesia, NM 88210
District III
1000 Rio Brazos Road, Aztec, NM 87410
District IV
1220 S. St. Francis Dr., Santa Fe, NM 87505

PW 043 1573023
State of New Mexico

Energy, Minerals and Natural Resources Department

Oil Conservation Division
1220 South St. Francis Dr.
Santa Fe, New Mexico 87505

APPLICATION FOR DOWNHOLE COMMINGLING

Form C-107A
Revised June 10, 2003

APPLICATION TYPE
☒ Single Well
☐ Establish Pre-Approved Pools
EXISTING WELLBORE
☒ Yes ☐ No

Bass Enterprises Production Co.

P. O. Box 2760 Midland, TX 79702

Operator

JAMES RANCH UNIT

75

Address

SEC 6, T-23-S, R-31-E

EDDY

Lease

Well No.

Unit Letter-Section-Township-Range

County

OGRID No. 001801 Property Code 001786 API No. 30-015-33114 Lease Type: ☒ Federal ☐ State ☐ Fee

DATA ELEMENT	UPPER ZONE	INTERMEDIATE ZONE	LOWER ZONE
Pool Name	UNDES. QUAHADA RIDGE	UNDES. LOS MEDANOS BONE SPRING	UNDES. SOUTH LOS MEDANOS WOLFCAMP
Pool Code	DELAWARE SE 50443	40295	96336
Top and Bottom of Pay Section (Perforated or Open-Hole Interval)	7404-7638	10998-11008	11186-11196
Method of Production (Flowing or Artificial Lift)	ARTIFICIAL LIFT	FLOWING	FLOWING
Bottomhole Pressure (Note: Pressure data will not be required if the bottom perforation in the lower zone is within 150% of the depth of the top perforation in the upper zone)	N/A	N/A	N/A
Oil Gravity or Gas BTU (Degree API or Gas BTU)	44.2	44.2	44.2
Producing, Shut-In or New Zone	PRODUCING	SI	SI
Date and Oil/Gas/Water Rates of Last Production. (Note: For new zones with no production history, applicant shall be required to attach production estimates and supporting data.)	Date: 10/04/2004 Rates: 134/435/94	Date: 08/21/2004 Rates: 129/227/22	Date: 08/21/2004 Rates: 55/93/9
Fixed Allocation Percentage (Note: If allocation is based upon something other than current or past production, supporting data or explanation will be required.)	Oil 52 % Gas 54 %	Oil 29 % Gas 29 %	Oil 19 % Gas 17 %

ADDITIONAL DATA

Are all working, royalty and overriding royalty interests identical in all commingled zones?
If not, have all working, royalty and overriding royalty interest owners been notified by certified mail?

Yes ☒ No ☐
Yes ☐ No ☐

Are all produced fluids from all commingled zones compatible with each other?

Yes ☒ No ☐

Will commingling decrease the value of production?

Yes ☐ No ☒

If this well is on, or communitized with, state or federal lands, has either the Commissioner of Public Lands or the United States Bureau of Land Management been notified in writing of this application?

Yes ☒ No ☐

NMOCD Reference Case No. applicable to this well: R-10558

Attachments:

- C-102 for each zone to be commingled showing its spacing unit and acreage dedication.
- Production curve for each zone for at least one year. (If not available, attach explanation.)
- For zones with no production history, estimated production rates and supporting data.
- Data to support allocation method or formula.
- Notification list of working, royalty and overriding royalty interests for uncommon interest cases.
- Any additional statements, data or documents required to support commingling.

PRE-APPROVED POOLS

If application is to establish Pre-Approved Pools, the following additional information will be required:

- List of other orders approving downhole commingling within the proposed Pre-Approved Pools
- List of all operators within the proposed Pre-Approved Pools
- Proof that all operators within the proposed Pre-Approved Pools were provided notice of this application.
- Bottomhole pressure data.

I hereby certify that the information above is true and complete to the best of my knowledge and belief.

SIGNATURE Cindi Goodman TITLE Production Clerk DATE 11/01/2004

TYPE OR PRINT NAME Cindi Goodman TELEPHONE NO. () (432)683-2277

E-MAIL ADDRESS cdgoodman@basspet.com

DISTRICT I
1825 N. French Dr., Hobbs, NM 88240

DISTRICT II
811 South First, Artesia, NM 88210

DISTRICT III
1000 Rio Brazos Rd., Artesia, NM 87410

DISTRICT IV
2040 South Pacheco, Santa Fe, NM 87505

State of New Mexico
Energy, Minerals and Natural Resources Department

Form C-102
Revised March 17, 1999

Submit to Appropriate District Office
State Lease - 4 Copies
Fee Lease - 3 Copies

OIL CONSERVATION DIVISION

2040 South Pacheco
Santa Fe, New Mexico 87504-2088

☐ AMENDED REPORT

WELL LOCATION AND ACREAGE DEDICATION PLAT

API Number 30-015-33114	Pool Code 50443	Pool Name QUAHADA RIDGE DELAWARE SE
Property Code 001786	Property Name JAMES RANCH UNIT	Well Number 75
OGRID No. 001801	Operator Name BASS ENTERPRISES PRODUCTION COMPANY	Elevation 3307'

Surface Location

UL or lot No. K	Section 6	Township 23 S	Range 31 E	Lot Idn	Feet from the 1980	North/South line SOUTH	Feet from the 2130	East/West line WEST	County EDDY
--------------------	--------------	------------------	---------------	---------	-----------------------	---------------------------	-----------------------	------------------------	----------------

Bottom Hole Location If Different From Surface

UL or lot No.	Section	Township	Range	Lot Idn	Feet from the	North/South line	Feet from the	East/West line	County
					Dedicated Acres 40	Joint or Infill	Consolidation Code	Order No.	

NO ALLOWABLE WILL BE ASSIGNED TO THIS COMPLETION UNTIL ALL INTERESTS HAVE BEEN CONSOLIDATED
OR A NON-STANDARD UNIT HAS BEEN APPROVED BY THE DIVISION

LOT 4 - 40.45 AC.	LOT 3 - 39.90 AC.	LOT 2 - 39.94 AC.	LOT 1 - 39.95 AC.
LOT 5 - 40.79 AC.	LAT - N32°19'54.8" LONG - W103°49'07.2"		
LOT 6 - 40.96 AC.	2130' 3305.9' 3307.6' 3303.6' 3306.8'		
LOT 7 - 41.15 AC.	1980'		

OPERATOR CERTIFICATION

I hereby certify the the information contained herein is true and complete to the best of my knowledge and belief.

Cindi Goodman
Signature
CINDI GOODMAN
Printed Name
PRODUCTION CLERK
Title
9-16-04
Date

SURVEYOR CERTIFICATION

I hereby certify that the well location shown on this plat was plotted from field notes of actual surveys made by me or under my supervision, and that the same is true and correct to the best of my belief.

August 22, 2000
Date Surveyed
Signature & Seal of Professional Surveyor
W.G. No. 7977
Certificate No. 7977 Jones
BASIN SURVEYS

DISTRICT I
1825 N. French Dr., Hobbs, NM 88240

DISTRICT II
811 South First, Artesia, NM 88210

DISTRICT III
1000 Rio Brazos Rd., Aztec, NM 87410

DISTRICT IV
2040 South Pacheco, Santa Fe, NM 87505

State of New Mexico
Energy, Minerals and Natural Resources Department

Form C-102
Revised March 17, 1999

Submit to Appropriate District Office
State Lease - 4 Copies
Fee Lease - 3 Copies

OIL CONSERVATION DIVISION

2040 South Pacheco
Santa Fe, New Mexico 87504-2088

☐ AMENDED REPORT

WELL LOCATION AND ACREAGE DEDICATION PLAT

API Number 30-015-33114	Pool Code 40295	Pool Name LOS MEDANOS (BONE SPRING)
Property Code 001786	Property Name JAMES RANCH UNIT	Well Number 75
OGRID No. 001801	Operator Name BASS ENTERPRISES PRODUCTION COMPANY	Elevation 3307'

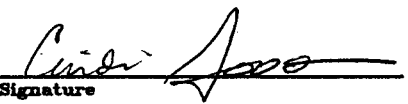
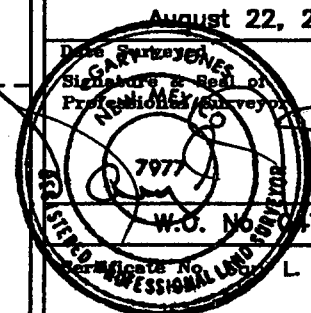
Surface Location

UL or lot No. K	Section 6	Township 23 S	Range 31 E	Lot Idn	Feet from the 1980	North/South line SOUTH	Feet from the 2130	East/West line WEST	County EDDY
--------------------	--------------	------------------	---------------	---------	-----------------------	---------------------------	-----------------------	------------------------	----------------

Bottom Hole Location If Different From Surface

UL or lot No.	Section	Township	Range	Lot Idn	Feet from the	North/South line	Feet from the	East/West line	County
Dedicated Acres 40	Joint or Infill	Consolidation Code	Order No.						

NO ALLOWABLE WILL BE ASSIGNED TO THIS COMPLETION UNTIL ALL INTERESTS HAVE BEEN CONSOLIDATED
OR A NON-STANDARD UNIT HAS BEEN APPROVED BY THE DIVISION

LOT 4 - 40.45 AC.	LOT 3 - 39.90 AC.	LOT 2 - 39.94 AC.	LOT 1 - 39.95 AC.	OPERATOR CERTIFICATION I hereby certify the the information contained herein is true and complete to the best of my knowledge and belief.  Signature CINDI GOODMAN Printed Name PRODUCTION CLERK Title 9-16-04 Date	
LOT 5 - 40.79 AC.	LAT - N32°19'54.8" LONG - W103°49'07.2"				SURVEYOR CERTIFICATION I hereby certify that the well location shown on this plat was plotted from field notes of actual surveys made by me or under my supervision, and that the same is true and correct to the best of my belief. August 22, 2000  Date Signature & Seal of Professional Surveyor W.O. No. 0471A L. Jones 7977 BASIN SURVEYS
LOT 6 - 40.96 AC.					
LOT 7 - 41.15 AC.					

DISTRICT I
1625 N. French Dr., Hobbs, NM 88240

DISTRICT II
811 South First, Artesia, NM 88210

DISTRICT III
1000 Rio Brazos Rd., Aztec, NM 87410

DISTRICT IV
2040 South Pacheco, Santa Fe, NM 87505

State of New Mexico
Energy, Minerals and Natural Resources Department

Form C-102
Revised March 17, 1999

Submit to Appropriate District Office
State Lease - 4 Copies
Fee Lease - 3 Copies

OIL CONSERVATION DIVISION

2040 South Pacheco
Santa Fe, New Mexico 87504-2088

☐ AMENDED REPORT

WELL LOCATION AND ACREAGE DEDICATION PLAT

API Number 30-015-33114	Pool Code 96336	Pool Name LOS MEDANOS (WOLFCAMP)
Property Code 001786	Property Name JAMES RANCH UNIT	Well Number 75
OGRID No. 001801	Operator Name BASS ENTERPRISES PRODUCTION COMPANY	Elevation 3307'

Surface Location

UL or lot No. K	Section 6	Township 23 S	Range 31 E	Lot Idn	Feet from the 1980	North/South line SOUTH	Feet from the 2130	East/West line WEST	County EDDY
--------------------	--------------	------------------	---------------	---------	-----------------------	---------------------------	-----------------------	------------------------	----------------

Bottom Hole Location If Different From Surface

UL or lot No.	Section	Township	Range	Lot Idn	Feet from the	North/South line	Feet from the	East/West line	County
Dedicated Acres 40	Joint or Infill	Consolidation Code	Order No.						

NO ALLOWABLE WILL BE ASSIGNED TO THIS COMPLETION UNTIL ALL INTERESTS HAVE BEEN CONSOLIDATED
OR A NON-STANDARD UNIT HAS BEEN APPROVED BY THE DIVISION

LOT 4 - 40.45 AC.	LOT 3 - 39.90 AC.	LOT 2 - 39.94 AC.	LOT 1 - 39.95 AC.
LOT 5 - 40.79 AC.	LAT - N32°19'54.8" LONG - W103°49'07.2"		
LOT 6 - 40.96 AC.	3305.9' 3307.6' 3303.6' 3306.8' 2130' 1980'		
LOT 7 - 41.15 AC.			

OPERATOR CERTIFICATION

I hereby certify the the information contained herein is true and complete to the best of my knowledge and belief.

Cindi Goodman
Signature
CINDI GOODMAN
Printed Name
PRODUCTION CLERK
Title
9-16-04
Date

SURVEYOR CERTIFICATION

I hereby certify that the well location shown on this plat was plotted from field notes of actual surveys made by me or under my supervision, and that the same is true and correct to the best of my belief.

August 22, 2000
Date
Signature & Seal of Professional Surveyor
W.D. No. 71A
Jones 7977
DASIN SURVEYS

JAMES RANCH UNIT #75
Application for Downhole Commingling

COMPLETION SUMMARY:

The Wolfcamp from 11,186 to 11,196' and the Bone Spring from 10,998' to 11,008' were perforated, individually broken down with acid, and fracture stimulated. The two reservoirs were then flowed for a period of 27 days after which time a composite bridge plug was set at 7,905'. Two members of the Lower Brushy Canyon (Delaware) were then perforated from 7,555' to 7,565' and from 7,628' to 7,638', individually broken down with acid, and fracture stimulated. Next, a second composite bridge plug was set at 7,500'. The Delaware was then perforated from 7,404' to 7,414', broken down with acid, and fracture stimulated. Finally, the upper composite bridge plug was drilled out and the Delaware intervals placed on pump.

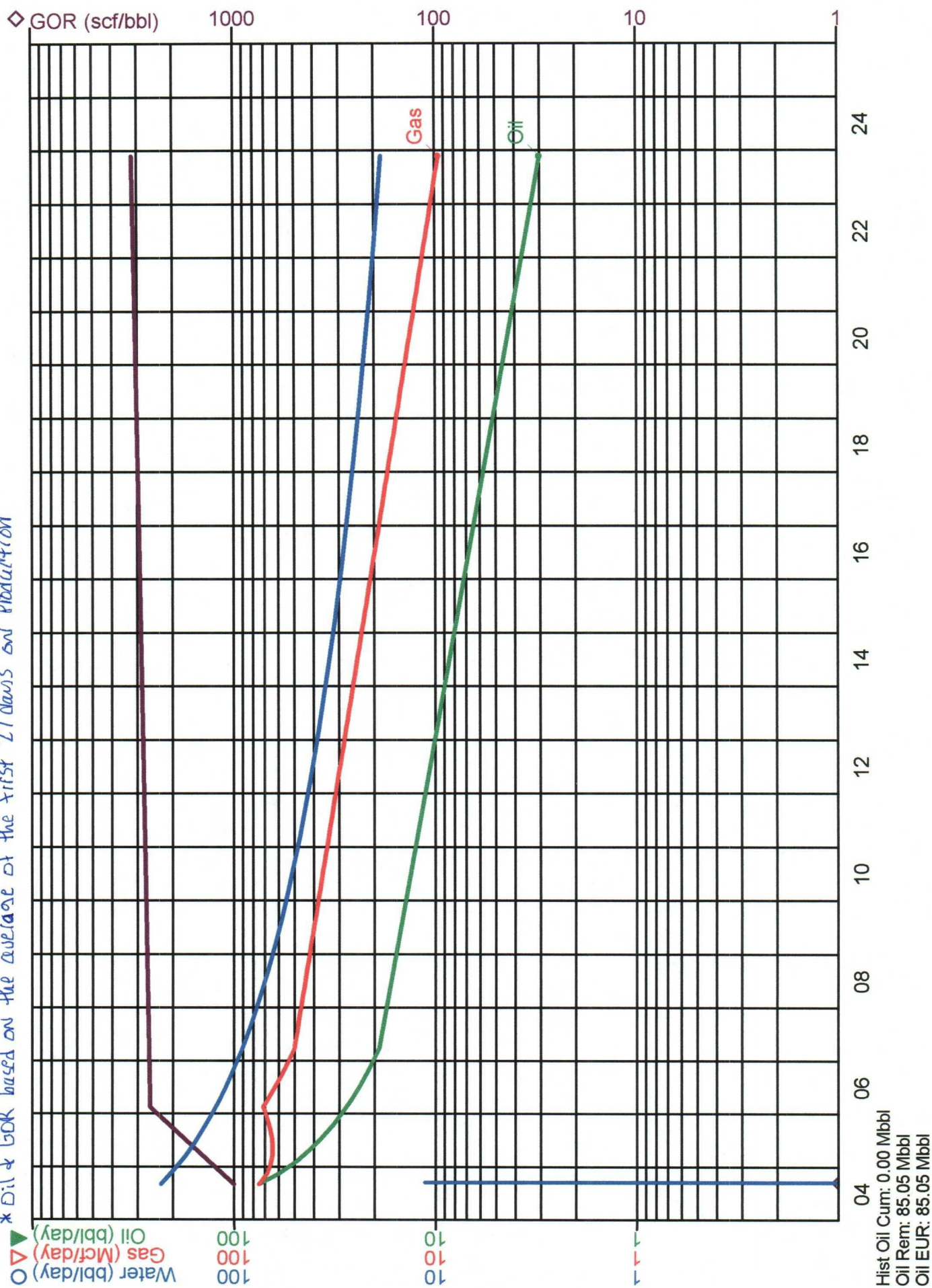
James Ranch Unit #76
DHC Allocation Factors

Year	Del Oil	BS Oil	Wt Oil	Del Oil %	BS Oil %	Wt Oil %	Del Gas	BS Gas	Wt Gas	Del Gas %	BS Gas %	Wt Gas %	Del Wtr	BS Wtr	Wt Wtr	Del Wtr %	BS Wtr %	Wt Wtr %
2004	7,662	4,861	3,779	47.0%	28.8%	23.2%	6,237	7,460	5,581	32.4%	38.7%	29.0%	25,118	806	1,032	93.2%	3.0%	3.8%
2005	14,108	7,009	5,801	52.4%	26.0%	21.6%	23,962	13,431	8,799	51.9%	29.1%	19.0%	54,871	652	840	97.4%	1.2%	1.5%
2006	8,823	4,816	3,683	50.9%	27.8%	21.3%	22,895	12,035	7,324	54.2%	28.5%	17.3%	39,359	334	506	97.9%	0.8%	1.3%
2007	6,774	3,979	2,839	49.8%	29.3%	20.9%	17,888	9,948	6,984	51.4%	28.6%	20.1%	30,713	219	455	97.9%	0.7%	1.4%
2008	6,050	3,405	2,553	50.4%	28.4%	21.3%	16,159	8,513	6,382	52.0%	27.4%	20.6%	25,255	160	411	97.8%	0.6%	1.6%
2009	5,400	2,962	2,291	50.7%	27.8%	21.5%	14,589	7,406	5,727	52.6%	26.7%	20.7%	21,348	123	369	97.7%	0.6%	1.7%
2010	4,834	2,627	2,062	50.8%	27.6%	21.7%	13,210	6,568	5,154	53.0%	26.3%	20.7%	18,530	101	332	97.7%	0.5%	1.8%
2011	4,327	2,360	1,856	50.6%	27.6%	21.7%	11,962	5,901	4,639	53.2%	26.2%	20.6%	16,371	84	289	97.7%	0.5%	1.8%
2012	3,884	2,149	1,674	50.4%	27.9%	21.7%	10,859	5,371	4,186	53.2%	26.3%	20.5%	14,700	72	269	97.7%	0.5%	1.8%
2013	3,467	1,962	1,503	50.0%	28.3%	21.7%	9,804	4,904	3,756	53.1%	26.6%	20.3%	13,274	62	242	97.8%	0.5%	1.8%
2014	3,104	1,809	1,352	49.5%	28.9%	21.6%	8,878	4,523	3,381	52.9%	27.0%	20.1%	12,129	56	218	97.8%	0.5%	1.8%
2015	2,778	1,679	1,217	49.0%	29.6%	21.4%	8,038	4,196	3,043	52.6%	27.5%	19.9%	11,165	49	196	97.9%	0.4%	1.7%
2016	2,494	1,570	564	53.9%	33.9%	12.2%	7,297	3,924	1,409	57.8%	31.1%	11.2%	10,373	44	176	97.9%	0.4%	1.7%
2017	2,226	1,467		60.3%	39.7%	0.0%	6,589	3,667		64.2%	35.8%		9,634	40		98.6%	0.4%	
2018	1,993	1,380		59.1%	40.9%	0.0%	5,966	3,449		63.4%	36.6%		9,016	38		98.6%	0.4%	
2019	1,784	1,302		57.8%	42.2%	0.0%	5,402	3,256		62.4%	37.6%		8,474	33		98.6%	0.4%	
2020	1,601	1,237		56.4%	43.6%	0.0%	4,904	3,092		61.3%	38.7%		8,013	31		98.6%	0.4%	
2021	1,429	1,171		55.0%	45.0%	0.0%	4,428	2,928		60.2%	39.8%		7,562	30		98.6%	0.4%	
2022	1,279	360		78.0%	22.0%	0.0%	4,009	901		81.6%	18.4%		7,176	27		98.6%	0.4%	
2023	1,037			100.0%	0.0%	0.0%	3,284			100.0%	0.0%		6,150					
2024																		
Total	85,054	48,105	31,174	51.8%	29.3%	19.0%	206,360	111,473	66,365	53.7%	29.0%	17.3%	311,856	2,961	5,345	97.4%	0.9%	1.7%

Oper: BASS
County, State: EDDY, NM
Major Phase: Oil



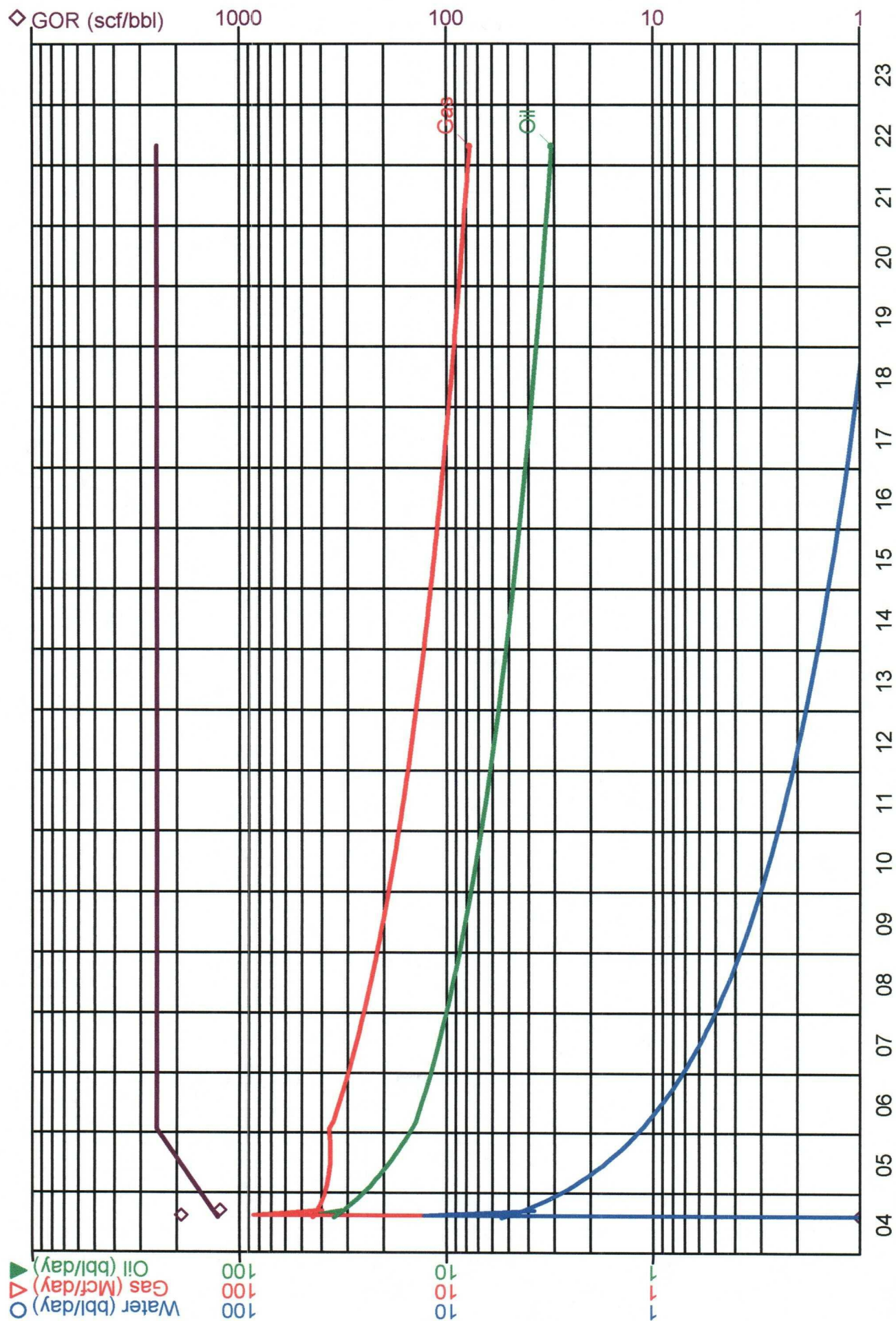
* Dil & GOR based on the average of the first 27 days on production





Case Name: JRU 75 BONE SPRING- DHC
Field: LOS MEDANOS
Reservoir: BONE SPRING

Oper: BASS
County, State: EDDY, NM
Major Phase: Oil

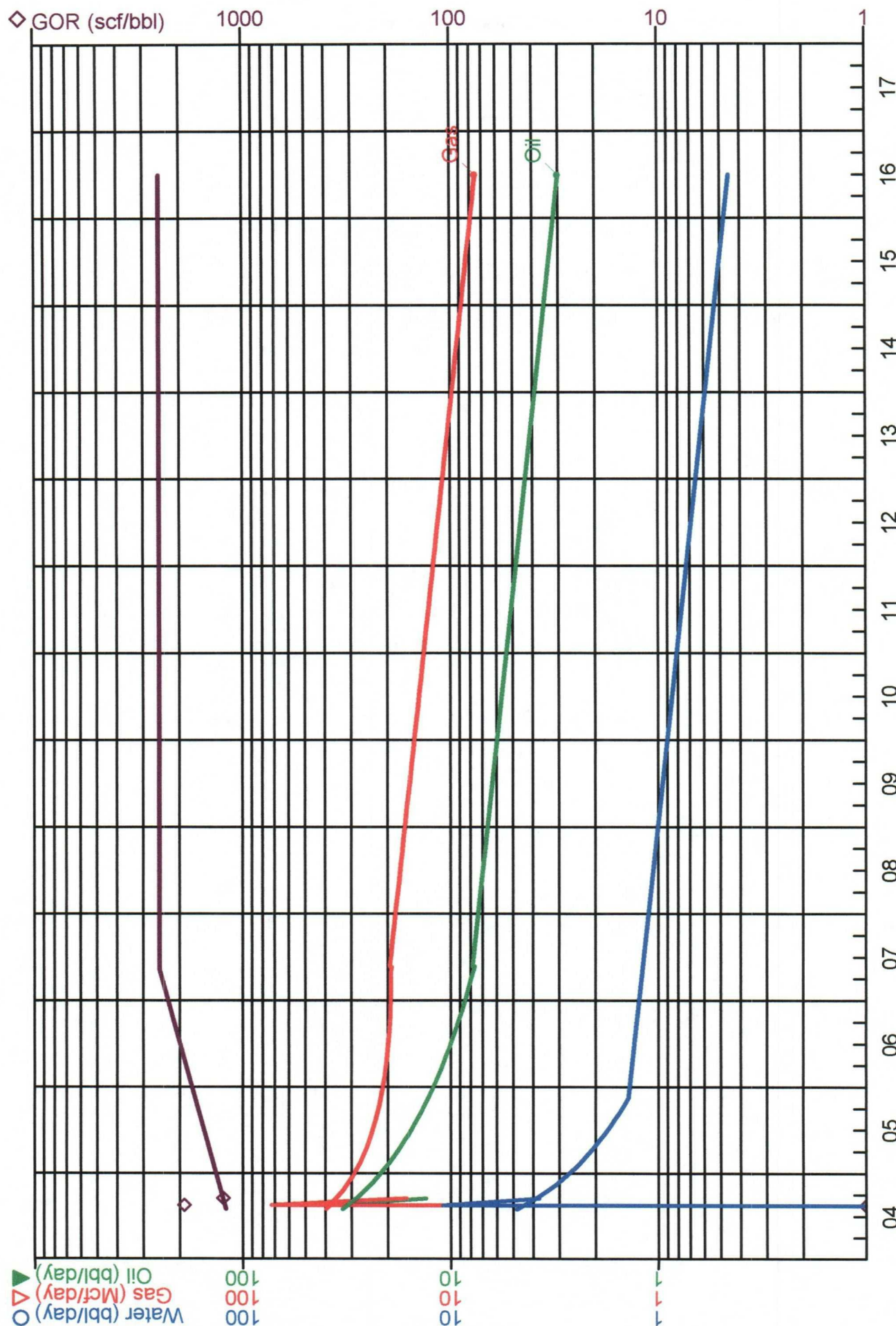


Hist Oil Cum: 2.34 Mbbl
Oil Rem: 48.11 Mbbl
Oil EUR: 48.11 Mbbl



Case Name: JRU 75 WOLFCAMP- DHC
Field: LOS MEDANOS
Reservoir: WOLFCAMP

Oper: BASS
County, State: EDDY, NM
Major Phase: Oil



Hist Oil Cum: 1.56 Mbbl
Oil Rem: 31.17 Mbbl
Oil EUR: 31.17 Mbbl