

NSL

NA

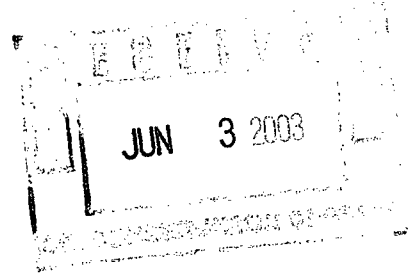
MS

TEXLAND PETROLEUM, L.P.
EXPLORATION AND PRODUCTION

777 MAIN STREET, SUITE 3200
FORT WORTH, TEXAS 76102

(817)-336-2751

June 3, 2003



Via E-mail mstogner@state.nm.us

Via Facsimile 505-476-3462

Mr. Michael Stogner, Engineer
1220 South St. Francis Dr.
Santa Fe, NM. 87505

Dear Mr. Stogner:

Texland Petroleum L.P. requests your review and approval to drill the McKinley CT No. 1 at the location 1535' FNL, 2418' FWL, Unit F, Section 30, T18S, R38E. As we previously discussed, this is a substandard location due to being less than 330' from the north and east lines of the proration unit. The attached location plan indicates same.

Also included is a plat showing in yellow the lease acreage which is fee land and which has common ownership. The target formations to be tested are the Abo and Wolfcamp which is based on seismic information and analysis. The target is small and moving it west and south to comply with 330' from proration boundaries compromises the target. Our requested location is ideal. This location will not endanger the correlative rights of offset as shown and as we discussed.

Also included are copies of the C101 and C102, the Application to Drill and the well location and acreage plat.

Thank you for your consideration of this matter and we look forward to receiving your approval order and drilling permit.

Sincerely yours,

Mark A. Jacoby
Mark A. Jacoby *Sam*
Area Manager of Drilling and Production

MAJ/ldg

Attachments

K:\CMY Documents Bkup\OFFICE\JACOBY\2003 Letters\McKinley No. 1 Drig Permit.wpd

DISTRICT I
1625 N. French Dr., Hobbs, NM 88240

DISTRICT II
811 South First, Artesia, NM 88210

DISTRICT III
1000 Rio Brazos Rd., Aztec, NM 87410

DISTRICT IV
2040 South Pacheco, Santa Fe, NM 87505

State of New Mexico
Energy, Minerals and Natural Resources Department

Form C-102
Revised March 17, 1999

Submit to Appropriate District Office
State Lease - 4 Copies
Fee Lease - 3 Copies

OIL CONSERVATION DIVISION

2040 South Pacheco
Santa Fe, New Mexico 87504-2088

☐ AMENDED REPORT

WELL LOCATION AND ACREAGE DEDICATION PLAT

API Number	Pool Code	Pool Name
Property Code	Property Name McKINLEY CT	Well Number 1
GRID No. 113315	Operator Name TEXLAND PETROLEUM L.P.	Elevation 3654'

Surface Location

UL or lot No. F	Section 30	Township 18 S	Range 38 E	Lot Idn	Feet from the 1535	North/South line NORTH	Feet from the 2418	East/West line WEST	County LEA
--------------------	---------------	------------------	---------------	---------	-----------------------	---------------------------	-----------------------	------------------------	---------------

Bottom Hole Location If Different From Surface

UL or lot No.	Section	Township	Range	Lot Idn	Feet from the	North/South line	Feet from the	East/West line	County
---------------	---------	----------	-------	---------	---------------	------------------	---------------	----------------	--------

Dedicated Acres 40	Joint or Infill	Consolidation Code	Order No.
-----------------------	-----------------	--------------------	-----------

NO ALLOWABLE WILL BE ASSIGNED TO THIS COMPLETION UNTIL ALL INTERESTS HAVE BEEN CONSOLIDATED
OR A NON-STANDARD UNIT HAS BEEN APPROVED BY THE DIVISION

	OPERATOR CERTIFICATION I hereby certify the the information contained hereto is true and complete to the best of my knowledge and belief. <u>Mark A. Jacoby</u> Signature <u>Mark A. Jacoby</u> Printed Name <u>Petroleum Engineer</u> Title <u>6-2-03</u> Date
	SURVEYOR CERTIFICATION I hereby certify that the well location shown on this plat was plotted from field notes of actual surveys made by me or under my supervision, and that the same is true and correct to the best of my belief. <u>MAY 19, 2003</u> Date Surveyed <u>W. L. JONES</u> Signature <u>W. L. JONES</u> Professional Surveyor <u>W. L. JONES</u> Certificate No. 3283A 7977 PROFESSIONAL LAND SURVEYOR DRAWN SURVEYS

District I
1625 N. French Dr., Hobbs, NM 88240
District II
811 South First, Artesia, NM 88210
District III
1000 Rio Brazos Road, Aztec, NM 87410
District IV
2040 South Pacheco, Santa Fe, NM 87505

State of New Mexico
Energy Minerals and Natural Resources

Oil Conservation Division
2040 South Pacheco
Santa Fe, NM 87505

Form C-101
Revised March 17, 1999

Submit to appropriate District Office
State Lease - 6 Copies
Fee Lease - 5 Copies

☐ AMENDED REPORT

APPLICATION FOR PERMIT TO DRILL, RE-ENTER, DEEPEN, PLUGBACK, OR ADD A ZONE

¹ Operator Name and Address Texland Petroleum L.P. 777 Main Street, Suite 3200, Fort Worth, TX 76102		² OGRID Number 113315
		³ API Number
⁴ Property Code	⁵ Property Name McKinley, C.T.	⁶ Well No. 1

⁷ Surface Location

UL or lot no. F	Section 30	Township 18S	Range 38E	Lot Idn	Feet from the 1535'	North/South line North	Feet from the 2418'	East/West line West	County Lea
--------------------	---------------	-----------------	--------------	---------	------------------------	---------------------------	------------------------	------------------------	---------------

⁸ Proposed Bottom Hole Location If Different From Surface

UL or lot no.	Section	Township	Range	Lot Idn	Feet from the	North/South line	Feet from the	East/West line	County
⁹ Proposed Pool 1						¹⁰ Proposed Pool 2			

¹¹ Work Type Code N	¹² Well Type Code O	¹³ Cable/Rotary Rotary	¹⁴ Lease Type Code P	¹⁵ Ground Level Elevation 3654'
¹⁶ Multiple N	¹⁷ Proposed Depth 8000'	¹⁸ Formation Wildcat	¹⁹ Contractor CapStar Drilling	²⁰ Spud Date 06/03/2003

²¹ Proposed Casing and Cement Program

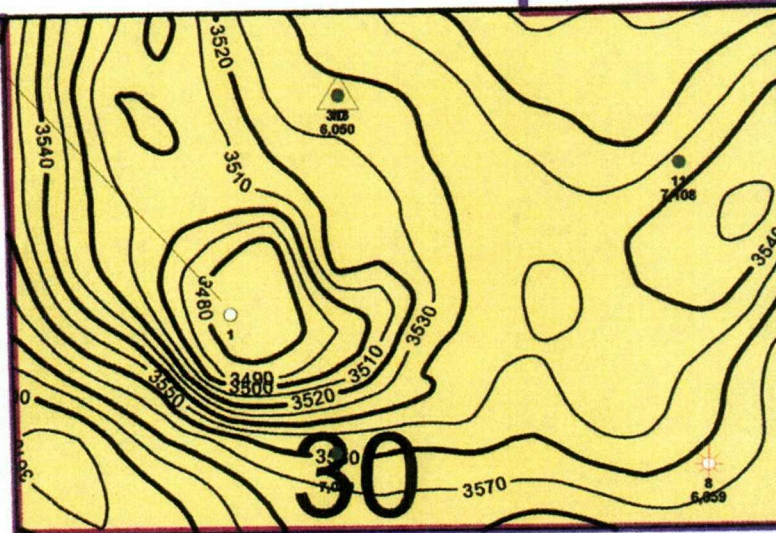
Hole Size	Casing Size	Casing weight/foot	Setting Depth	Sacks of Cement	Estimated TOC
17 1/2"	13 3/8"	48#	450'	495 sx	Surface
11"	8 5/8"	32#	3500'	545 sx	Surface
7 7/8"	5 1/2"	15.5# & 17#	8000'	965 sx	3500'

²² Describe the proposed program. If this application is to DEEPEN or PLUG BACK, give the data on the present productive zone and proposed new productive zone.
Describe the blowout prevention program, if any. Use additional sheets if necessary.

Texland plans to drill well to a total depth of 8,000' and test. Double ram BOP with pipe and blind rams. Will also have rotating head.

²³ I hereby certify that the information given above is true and complete to the best of my knowledge and belief. Signature: <i>Susan Austin-Morse</i> Printed Name: Susan Austin-Morse Title: Regulatory Analyst Date: 05/22/2003		OIL CONSERVATION DIVISION Approved by: Title: Approval Date: Expiration Date: Conditions of Approval: Attached <input type="checkbox"/>	
Phone: (817)900-1215			

11
7,105



TEXLAND-HOB
BELOW BLINEE

31
7.050



39
6.030

34
7,010

38
17,000
6,000

29
6.000

45
7,500

41
8.500

41
7,500


42
8.50

43
8.60

46

●	☀
44	28
7,500	6,000

32
7,075

30
6,000

Active Blinebry Producers

944 Ft/in

