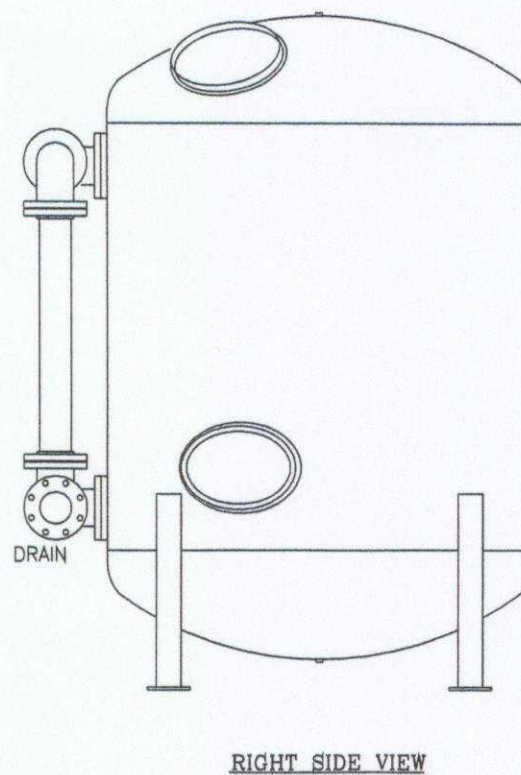
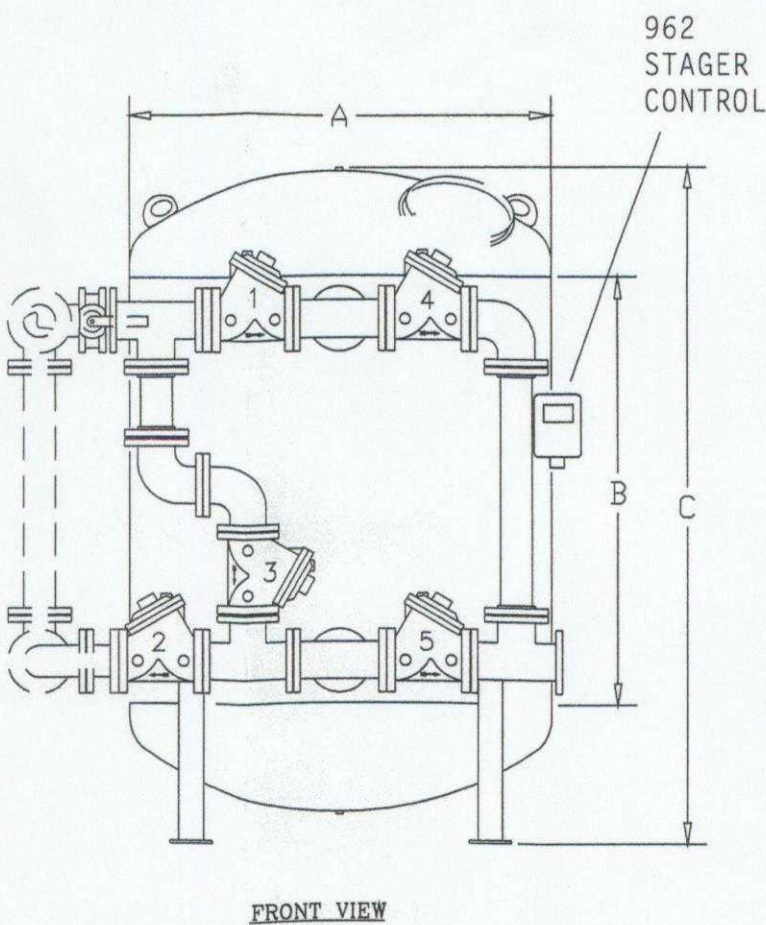
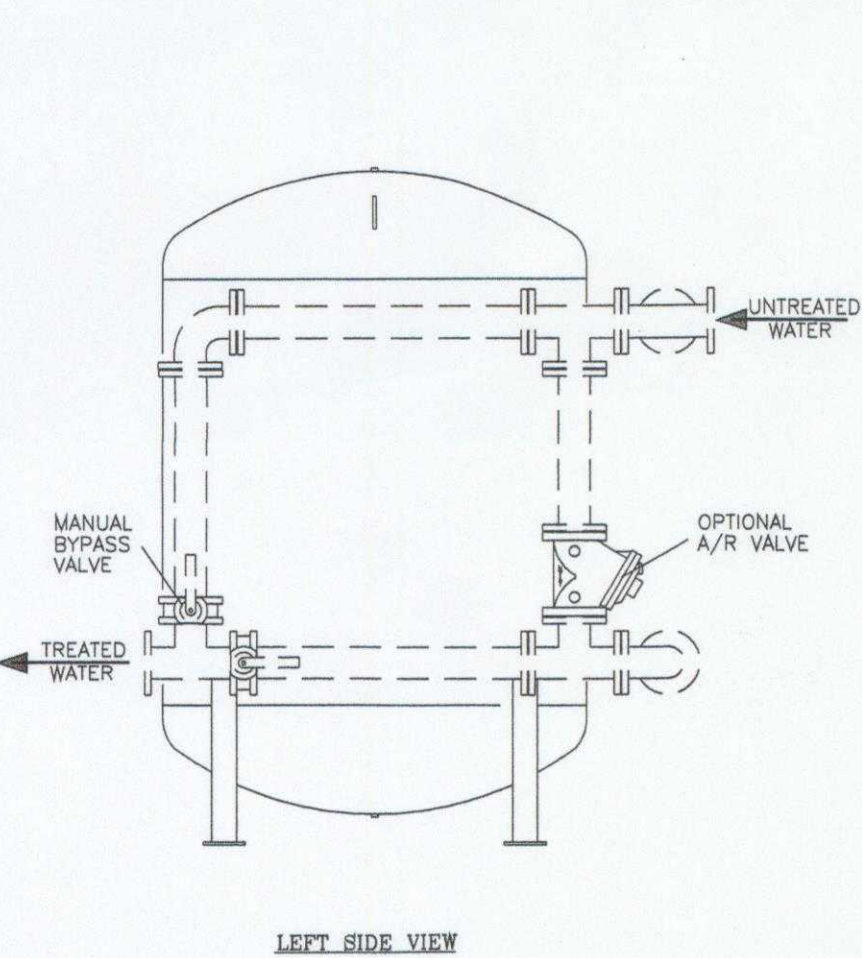
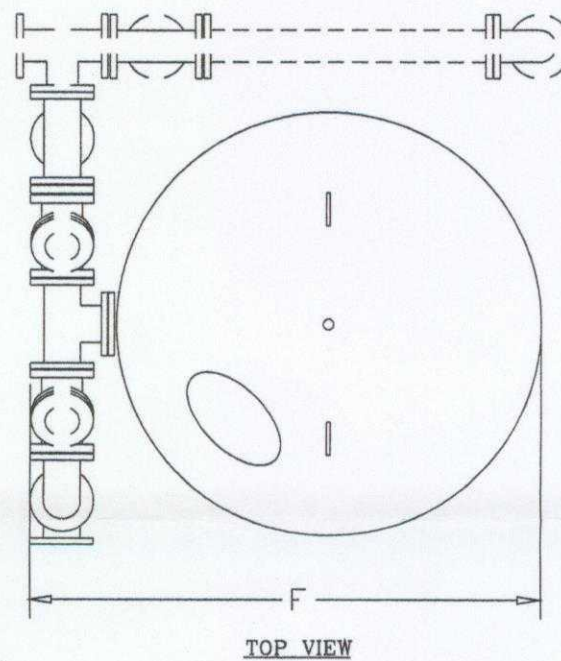


(ENGLISH)

MODEL NUMBER	DIMENSIONS (IN.)				WEIGHTS (LBS)	
	A	B	C	F	SHIPPING	OPERATING
M60-S/C60-S/G60-S	60	60	91	80	8480	15900
M72-S/C-72-S/G72-S	72	60	96	92	12500	22700
G84-S	84	60	101	104	17415	29500

(METRIC)

MODEL NUMBER	DIMENSIONS (CM)				WEIGHTS (KGS)	
	A	B	C	F	SHIPPING	OPERATING
M60-S/C60-S/G60-S	152	152	231	203	3816	7155
M72-S/C-72-S/G72-S	182	152	243	233	5625	10215
G84-S	213	152	256	264	7836	13275



NOTES:

1. WATER PRESSURE 25 PSI MINIMUM TO 120 PSI MAXIMUM.
2. ALLOW CLEARANCE BETWEEN COMPONENTS FOR MAINTENANCE.
3. A 120 VOLT ELECTRICAL OUTLET SHOULD BE PROVIDED WITHIN 10 FEET OF EQUIPMENT.
4. REFER TO INSTALLATION INSTRUCTIONS FOR PROPER RECOMMENDED PIPING TO DRAINS. TO MEET SANITARY REQUIREMENTS, THE DRAIN LINE MUST BE PIPED TO AN OPEN DRAIN WHERE FLOW (DURING REGENERATION) CAN BE OBSERVED AND AN AIR GAP MUST BE MAINTAINED IN ACCORDANCE WITH LOCAL PLUMBING CODE REGULATIONS.
5. ALL DIMENSIONS ARE +/- 1 INCH (3CM). OVERALL HEIGHT BASED ON STANDARD NON-CODE CONSTRUCTION. SPECIALLY CONSTRUCTED TANKS AND A.S.M.E. CODE CONSTRUCTED TANKS HAVE SLIGHTLY DIFFERENT DIMENSIONS. CONSULT FACTORY IF CRITICAL.
6. INFORMATION IS SUBJECT TO CHANGE WITHOUT NOTICE.
7. INTERCONNECTING PIPING SHOWN DOTTED IS SUPPLIED BY OTHERS.
8. WEIGHT DATA IS ESTIMATED.

CONFIDENTIAL & PROPRIETARY

This Document including all information contained thereon is the exclusive and confidential property of GE Water Technologies of Minnetonka, MN. This Document and its information are not to be copied, reproduced or delivered to others in whole or in part without expressed written consent and is loaned subject to return on demand. All rights to design and invention are reserved.



GE Water Technologies

TITLE

Valve Nest Filters

DWG. Number

900474