

DATE IN 1/13/2014	SUSPENSE	ENGINEER	LOGGED IN 1/14/2014	TYPE CTB	APP NO. PMAM1401445393
----------------------	----------	----------	------------------------	-------------	---------------------------

ABOVE THIS LINE FOR DIVISION USE ONLY

NEW MEXICO OIL CONSERVATION DIVISION
- Engineering Bureau -
 1220 South St. Francis Drive, Santa Fe, NM 87505



ADMINISTRATIVE APPLICATION CHECKLIST

THIS CHECKLIST IS MANDATORY FOR ALL ADMINISTRATIVE APPLICATIONS FOR EXCEPTIONS TO DIVISION RULES AND REGULATIONS WHICH REQUIRE PROCESSING AT THE DIVISION LEVEL IN SANTA FE

Application Acronyms:

[NSL-Non-Standard Location] [NSP-Non-Standard Proration Unit] [SD-Simultaneous Dedication]
[DHC-Downhole Commingling] [CTB-Lease Commingling] [PLC-Pool/Lease Commingling]
[PC-Pool Commingling] [OLS - Off-Lease Storage] [OLM-Off-Lease Measurement]
[WFX-Waterflood Expansion] [PMX-Pressure Maintenance Expansion]
[SWD-Salt Water Disposal] [IPI-Injection Pressure Increase]
[EOR-Qualified Enhanced Oil Recovery Certification] [PPR-Positive Production Response]

[1] TYPE OF APPLICATION - Check Those Which Apply for [A]

[A] Location - Spacing Unit - Simultaneous Dedication
☐ NSL ☐ NSP ☐ SD

Check One Only for [B] or [C]

[B] Commingling - Storage - Measurement
☐ DHC ☒ CTB ☐ PLC ☐ PC ☐ OLS ☐ OLM

[C] Injection - Disposal - Pressure Increase - Enhanced Oil Recovery
☐ WFX ☐ PMX ☐ SWD ☐ IPI ☐ EOR ☐ PPR

[D] Other: Specify _____

[2] NOTIFICATION REQUIRED TO: - Check Those Which Apply, or ☐ Does Not Apply

[A] ☒ Working, Royalty or Overriding Royalty Interest Owners

[B] ☐ Offset Operators, Leaseholders or Surface Owner

[C] ☐ Application is One Which Requires Published Legal Notice

[D] ☒ Notification and/or Concurrent Approval by BLM or SLO
 U.S. Bureau of Land Management - Commissioner of Public Lands, State Land Office

[E] ☐ For all of the above, Proof of Notification or Publication is Attached, and/or,

[F] ☐ Waivers are Attached

[3] SUBMIT ACCURATE AND COMPLETE INFORMATION REQUIRED TO PROCESS THE TYPE OF APPLICATION INDICATED ABOVE.

[4] CERTIFICATION: I hereby certify that the information submitted with this application for administrative approval is **accurate** and **complete** to the best of my knowledge. I also understand that **no action** will be taken on this application until the required information and notifications are submitted to the Division.

Note: Statement must be completed by an individual with managerial and/or supervisory capacity.

Erin Workman
 Print or Type Name

Erin Workman
 Signature

Regulatory Compliance Associate
 Title

01.10.14
 Date

Erin.Workman@divn.com
 E-mail Address

CTB
 - DEVON
 6137
 wells
 - Ironhouse 414
 30-025-40676
 - Ironhouse 419 2H
 30-025-41094
 - Ironhouse 419 3H
 30-025-41050
 - Ironhouse 419 4H
 30-025-41245
 - Ironhouse 420 1H
 30-025-40611
 - Ironhouse 420 2H
 30-025-40745
 Field
 WC-025 G-06
 S183518A
 BOWES SPRING



Devon Energy Corporation
333 West Sheridan Avenue
Oklahoma City, OK 73102-5010

405 552-7970 Phone
Erin.workman@devon.com

RECEIVED

JAN 13 10 13 AM

January 10, 2014

Mr. Richard Ezeanyim
State of New Mexico
Oil Conservation Division
1220 S. St. Francis Drive
Santa Fe, New Mexico 87505

Re: Central Tank Battery
Ironhouse 19 State Com 1H, Ironhouse 19 State Com 2H, Ironhouse 19 State Com 3H,
Ironhouse 19 State Com 4H, Ironhouse 20 State Com 1H, Ironhouse 20 State Com 2H,
Sec. 19-18S-35E, Sec. 20-18S-35E
Leases: NMNM 1478 NMNM1499, NMNM1374
API: #30-025-40676, #30-025-41094, #30-025-41050, #30-025-41245, #30-025-40748,
#30-025-40611
Pool: (97930) WC-025 G-06 S183518A; Bone Spring
Lea County, New Mexico

Dear Mr. Ezeanyim:

Please find attached the OCD C-107B Sundry Notice of Intent for a Central Tank Battery for the
aforementioned wells.

The working interest, royalty interest and overriding royalty interest owners are not identical;
notification has been sent via certified mail (see attached).

Should you require any additional information or assistance, please do not hesitate to contact me at
(405)-552-7970.

Sincerely,


Erin Workman
Regulatory Compliance Associate

Enclosures

District I
1625 N. French Drive, Hobbs, NM 88240
District II
1301 W. Grand Ave, Artesia, NM 88210
District III
1000 Rio Brazos Road, Aztec, NM 87410
District IV
1220 S. St Francis Dr, Santa Fe, NM
87505

State of New Mexico
Energy, Minerals and Natural Resources Department

Form C-107-B
Revised June 10, 2003

OIL CONSERVATION DIVISION

1220 S. St Francis Drive
Santa Fe, New Mexico 87505

Submit the original
application to the Santa Fe
office with one copy to the
appropriate District Office.

APPLICATION FOR SURFACE COMMINGLING (DIVERSE OWNERSHIP)

OPERATOR NAME: Devon Energy Production Co., LP
OPERATOR ADDRESS: 333 W Sheridan Avenue, Oklahoma City, OK 73102
APPLICATION TYPE:

☐ Pool Commingling ☒ Lease Commingling ☐ Pool and Lease Commingling ☐ Off-Lease Storage and Measurement (Only if not Surface Commingled)

LEASE TYPE: ☐ Fee ☒ State ☐ Federal

Is this an Amendment to existing Order? ☐ Yes ☒ No If "Yes", please include the appropriate Order No. _____
Have the Bureau of Land Management (BLM) and State Land office (SLO) been notified in writing of the proposed commingling
☒ Yes ☐ No

(A) POOL COMMINGLING

Please attach sheets with the following information

(1) Pool Names and Codes	Gravities / BTU of Non-Commingled Production	Calculated Gravities / BTU of Commingled Production		Calculated Value of Commingled Production	Volumes

- (2) Are any wells producing at top allowables? ☐ Yes ☒ No
(3) Has all interest owners been notified by certified mail of the proposed commingling? ☒ Yes ☐ No.
(4) Measurement type: ☒ Metering ☒ Well Test Method
(5) Will commingling decrease the value of production? ☐ Yes ☒ No If "yes", describe why commingling should be approved

(B) LEASE COMMINGLING

Please attach sheets with the following information

- (1) Pool Name and Code.
(2) Is all production from same source of supply? ☒ Yes ☐ No
(3) Has all interest owners been notified by certified mail of the proposed commingling? ☒ Yes ☐ No
(4) Measurement type: ☒ Metering ☒ Other (Well Test Method)

(C) POOL and LEASE COMMINGLING

Please attach sheets with the following information

- (1) Complete Sections A and E.

(D) OFF-LEASE STORAGE and MEASUREMENT

Please attached sheets with the following information

- (1) Is all production from same source of supply? ☒ Yes ☐ No
(2) Include proof of notice to all interest owners.

(E) ADDITIONAL INFORMATION (for all application types)

Please attach sheets with the following information

- (1) A schematic diagram of facility, including legal location.
(2) A plat with lease boundaries showing all well and facility locations. Include lease numbers if Federal or State lands are involved.
(3) Lease Names, Lease and Well Numbers, and API Numbers.

I hereby certify that the information above is true and complete to the best of my knowledge and belief.

SIGNATURE:  TITLE: Regulatory Compliance Assoc. DATE: 01.10.14

TYPE OR PRINT NAME: Erin workman TELEPHONE NUMBER: (405) 552-7970

E-MAIL ADDRESS: Erin.Workman@dvn.com

APPLICATION FOR A CENTRAL TANK BATTERY

State of New Mexico – Santa Fe
Oil Conservation Division
1220 S. St Francis Drive
Santa Fe, New Mexico 87505

Central Tank Battery Proposal for the Ironhouse Wells:

Devon Energy Production Company, LP is requesting approval for the Central Tank Battery for the following wells:

Federal Lease VB 1374 & VB 1499

Well Name	Location	API #	Pool 97930	BOPD	Oil Gravities	MCFPD	BTU
Ironhouse 19 State Com 1H	Sec. 19-T18S-R34E	30-025-40676	WC-025 G-06 S183518A	167	37	110	1328.6
Ironhouse 19 State Com 2H	Sec. 19-T18S-R34E	30-025-41094	WC-025 G-06 S183518A	305	35	227	1328.6*
Ironhouse 19 State Com 3H	Sec. 19-T18S-R34E	30-025-41050	WC-025 G-06 S183518A	384	38	160	1328.6*

Federal Lease VB 1374, VB 1499, & FEE (Working on lease at this time-Ownership is Diverse)

Well Name	Location	API #	Pool 97930	BOPD	Oil Gravities	MCFPD	BTU
Ironhouse 19 State Com 4H	Sec. 19-T18S-R34E	30-025-41246	WC-025 G-06 S183518A	227	37*	100	1328.6*

Federal Lease VB 1374

Well Name	Location	API #	Pool 97930	BOPD	Oil Gravities	MCFPD	BTU
Ironhouse 20 State 1H	Sec. 20-T18S-R34E	30-025-40611	WC-025 G-06 S183518A	144	36	64	1328.6*
Ironhouse 20 State 2H	Sec. 20-T18S-R34E	30-025-40748	WC-025 G-06 S183518A	140	36*	241	1328.6*

*Proposed numbers for well. Will provide numbers upon receipt.

Oil & Gas metering:

There is a central tank battery located on the Ironhouse 19 State Com 1H location in Sec 19-T18S-R35E in Lea Co., NM. The production from the Ironhouse 19 State Com 1H, 2H, 3H, and the Ironhouse 20 State 1H & 2H will come to a common production header with isolation lines to route each wells production. From this point one well will be on test and its production routed through the test equipment. The Ironhouse 19 State Com 4H will flow through its own three phase separator with Coriolis to meter the oil, mag meter to meter the water, and gas allocation meter to meter the gas.

The Ironhouse 19 State Com 1H battery will have four oil tanks that all five wells will utilize and they have a common Targa Gas Sales Meter #118-001219 which is on location in the southwest corner in Sec. 19-T18S-R35E. Oil, gas, and water volumes from the Ironhouse 19 State Com 1H, 2H, 3H, & Ironhouse 20 State 1H & 2H producing to this battery will be determined by using a test separator/heater treater at the proposed facility. Well tests for each well will be conducted at least once per month, for a minimum of 24 hours. Oil, gas, and water volumes for the Ironhouse 19 State Com 4H will have its own test separator and then dump into the common system for all wells.

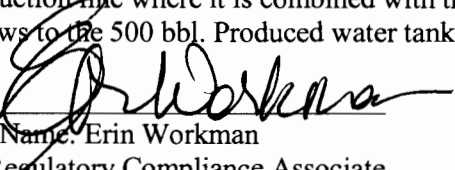
The well which is on test production from the Ironhouse 19 State Com 1H, 2H, 3H, & Ironhouse 20 State 1H & 2H, flows to the two phase test separator, where after separation gas is routed to the gas test meter #677-49-058, then to the Targa Gas Sales Meter. Produced water and oil are separated, the oil is metered with a Micro Motion Coriolis Meter and water is metered using a mag meter. The oil then flows into an oil production line where it is combined with the other wells oil and flows to one of the 500 bbl. The water from the well on test flows to the 500 bbl. produced water tank, along with the water from the wells that were not on test. The gas allocation meter and Coriolis Test Meter number will be provided upon receipt for the Ironhouse 19 State 4H.

Oil production will be allocated on a daily basis based on the Coriolis Test Meter #14318864. This meter will be proven, as per API, NMOCD, and BLM specifications, when installed, once per month for the first 3 months (to establish a consistent repeatability factor), and then quarterly thereafter, the factor obtained will be used to allocate the production volumes. Gas production will be allocated on a daily basis based on the subtraction method from the Targa Gas Sales Meter and the gas test meter. The gas production from the production equipment and the test gas meter will commingle and flow through the Targa

Gas Sales meter. These meters will be calibrated on a regular basis per API, NMOCD, and BLM specifications. The OCD will be notified of any future changes in the facilities.

The Ironhouse 19 State 4H flows to a three phase test separator, where after separation gas is routed to the gas test meter, then to the Targa CDP **##118-001219**. Produced water and oil are separated, the oil is then metered with a Micro Coriolis meter (Will provide number upon receipt) and water is metered using a turbine meter. The oil then flows into an oil production line where it is combined with the other wells oil and flows to one of the 500 bbl. The water from this well flows to the 500 bbl. Produced water tank, along with the water from the other wells.

Signed:



Printed Name: Erin Workman

Title: Regulatory Compliance Associate

Date: 01.10.14

HOBBS OCD

FEB 01 2013

DISTRICT I
675 N. French Dr., Hobbs, NM 88249
Phone: (505) 395-6161 Fax: (505) 395-6722

DISTRICT II
111 S. First St., Roswell, NM 88203
Phone: (505) 748-1273 Fax: (505) 748-6722

DISTRICT III
1008 Rio Rancho Rd., Albuquerque, NM 87110
Phone: (505) 374-4179 Fax: (505) 374-4170

DISTRICT IV
1228 S. R. Francis Dr., Bernalillo, NM 87033
Phone: (505) 476-3888 Fax: (505) 476-3882

State of New Mexico
Energy, Minerals & Natural Resources Department
OIL CONSERVATION DIVISION
1220 South St. Francis Dr.
Santa Fe, New Mexico 87505

RECEIVEDForm C-102
Revised August 1, 2011Submit one copy to appropriate
District Office☐ AMENDED REPORT**WELL LOCATION AND ACREAGE DEDICATION PLAT**

API Number 30-025-40676	Pool Code 97930	Pool Name Airstrip; BONE SPRING, NE
Property Code 39319	Property Name IRONHOUSE 19 STATE COM	Well Number 1H
OGRIID No. 6137	Operator Name DEVON ENERGY PRODUCTION COMPANY, LP	Elevation 3951.6'

Surface Location

UT. or lot no.	Section	Township	Range	Lot Idn	Feet from the	North/South line	Feet from the	East/West line	County
N	19	18 S	35 E		200	SOUTH	1800	WEST	LEA

Bottom Hole Location If Different From Surface

UT. or lot no.	Section	Township	Range	Lot Idn	Feet from the	North/South line	Feet from the	East/West line	County
C	19	18 S	35 E		200'	SOUTH	1800'	WEST	LEA
Dedicated Acres 160	Joint or Infill	Consolidated Code	Order No.						

No allowable will be assigned to this completion until all interests have been consolidated or a non-standard unit has been approved by the division.

<p>NW COR SEC 19 NMSP-E (NAD 83) Y = 634159.3' N X = 795941.1' E LAT = N32° 44' 25.18" LONG = W103° 30' 19.03"</p>	<p>IRONHOUSE 19 STATE COM 1H BHL NMSP-E (NAD 83) Y = 633825.6' N X = 797744.1' E LAT = N32° 44' 22.74" LONG = W103° 29' 57.96"</p>	<p>NE COR SEC 19 NMSP-E (NAD 83) Y = 634173.2' N X = 801177.8' E LAT = N32° 44' 25.91" LONG = W103° 29' 17.72"</p>	<p>OPERATOR CERTIFICATION I hereby certify that the information contained herein is true and complete to the best of my knowledge and belief, and that this organization either owns a working interest or unless otherwise stated in the land including the proposed bottom hole location or has a right to drill this well at this location pursuant to a contract with an owner of such a mineral or working interest, or to voluntary pooling agreement or a compulsory pooling order heretofore entered by the division.</p> <p><i>D. R.</i> 1/28/2013 Signature Date David H. Cook Print Name david.cook@dvn.com E-mail Address</p>
<p>SW COR SEC 19 NMSP-E (NAD 83) Y = 628865.6' N X = 795988.5' E LAT = N32° 43' 33.84" LONG = W103° 30' 18.96"</p>	<p>IRONHOUSE 19 STATE COM 1H SHL NMSP-E (NAD 83) Y = 629074.7' N X = 797786.7' E LAT = N32° 43' 35.73" LONG = W103° 29' 57.89"</p>	<p>SE COR SEC 19 NMSP-E (NAD 83) Y = 628884.7' N X = 801228.3' E LAT = N32° 43' 33.58" LONG = W103° 29' 17.65"</p>	<p>SURVEYORS CERTIFICATION I hereby certify that the well location shown on this plat was plotted from field notes of actual surveys made by me or under my supervision, and that the same is true and correct to the best of my belief.</p> <p>MAY 15, 2012 Date of Survey Signature and Seal of Professional Surveyor <i>James E. Tompkins</i> Job No. WTC48541 JAMES E. TOMPKINS 14729 Certificate Number</p>

APR 23 2013

AUG 13 2013

District I
1625 N. French Dr., Hobbs, NM 88240
Phone: (505) 292-6161 Fax: (505) 393-0720

District II
311 S. First St., Artesia, NM 88210
Phone: (505) 748-1283 Fax: (505) 748-9720

District III
1000 Rio Bizas Road, Aztec, NM 87410
Phone: (505) 334-6178 Fax: (505) 334-6170

District IV
1220 S. St. Francis Dr., Santa Fe, NM 87505
Phone: (505) 476-3460 Fax: (505) 476-3462

RECEIVED

State of New Mexico
Energy, Minerals & Natural Resources Department
OIL CONSERVATION DIVISION
1220 South St. Francis Dr.
Santa Fe, NM 87505

Form C-102
Revised August 1, 2011
Submit one copy to appropriate
District Office

☐ AMENDED REPORT

WELL LOCATION AND ACREAGE DEDICATION PLAT

¹ API Number 30-025-41094	² Pool Code 97930	³ Pool Name WC-025 G-06 S183518A; BONE SPRING
⁴ Property Code 39319	⁵ Property Name IRONHOUSE "19" STATE COM	⁶ Well Number 2H
⁷ OGRID No. 6137	⁸ Operator Name DEVON ENERGY PRODUCTION COMPANY, L.P.	⁹ Elevation 3931.8

¹⁰ Surface Location

U/L or lot no.	Section	Township	Range	Lot Idn	Feet from the	North/South line	Feet from the	East/West line	County
P	19	18 S	35 E		410	SOUTH	630	EAST	LEA

" Bottom Hole Location If Different From Surface

U/L or lot no. A	Section 19	Township 18 S	Range 35 E	Lot Idn	Feet from the 1963	North/South line NORTH S	Feet from the 600 622	East/West line EAST	County LEA
¹² Dedicated Acres 160	¹³ Joint or Infill	¹⁴ Consolidation Code		¹⁵ Order No.					

No allowable will be assigned to this completion until all interests have been consolidated or a non-standard unit has been approved by the division.

13 NW CORNER SEC. 19
 LAT. = 32.7406058°N
 LONG. = 103.5052876°W
 NMSP EAST (FT)
 N = 634159.14
 E = 795940.79

14 NE CORNER SEC. 19
 LAT. = 32.7405301°N
 LONG. = 103.4882576°W
 NMSP EAST (FT)
 N = 634173.96
 E = 801177.51

NOTE:
 LATITUDE AND LONGITUDE COORDINATES
 ARE SHOWN USING THE NORTH
 AMERICAN DATUM OF 1983 (NAD83) IN
 DEGREES MINUTES DECIMAL SECONDS
 FORMAT. BASIS OF BEARING IS NEW
 MEXICO STATE PLANE EAST (NAD83)
 COORDINATES MODIFIED TO SURFACE.

15 IRONHOUSE "19" STATE COM #2H
 ELEV. = 3931.8'
 LAT. = 32.7271256°N (NAD83)
 LONG. = 103.4902930°W
 NMSP EAST (FT)
 N = 629291.03
 E = 800590.46

16 SW CORNER SEC. 19
 LAT. = 32.7260645°N
 LONG. = 103.5052846°W
 NMSP EAST (FT)
 N = 628868.59
 E = 795989.28

17 SE CORNER SEC. 19
 LAT. = 32.7259897°N
 LONG. = 103.4882437°W
 NMSP EAST (FT)
 N = 628882.30
 E = 801223.98

18 SURFACE LOCATION

BOTTOM OF HOLE
 LAT. = 32.7396533°N
 LONG. = 103.4904051°W
 NMSP EAST (FT)
 N = 633841.29
 E = 800519.79

BOTTOM OF HOLE
 LAT. = 32.7396533°N
 LONG. = 103.4904051°W
 NMSP EAST (FT)
 N = 633841.29
 E = 800519.79

19 NW CORNER SEC. 19
 LAT. = 32.7406058°N
 LONG. = 103.5052876°W
 NMSP EAST (FT)
 N = 634159.14
 E = 795940.79

20 NE CORNER SEC. 19
 LAT. = 32.7405301°N
 LONG. = 103.4882576°W
 NMSP EAST (FT)
 N = 634173.96
 E = 801177.51

21 IRONHOUSE "19" STATE COM #2H
 ELEV. = 3931.8'
 LAT. = 32.7271256°N (NAD83)
 LONG. = 103.4902930°W
 NMSP EAST (FT)
 N = 629291.03
 E = 800590.46

22 SW CORNER SEC. 19
 LAT. = 32.7260645°N
 LONG. = 103.5052846°W
 NMSP EAST (FT)
 N = 628868.59
 E = 795989.28

23 SE CORNER SEC. 19
 LAT. = 32.7259897°N
 LONG. = 103.4882437°W
 NMSP EAST (FT)
 N = 628882.30
 E = 801223.98

24 SURFACE LOCATION

BOTTOM OF HOLE
 LAT. = 32.7396533°N
 LONG. = 103.4904051°W
 NMSP EAST (FT)
 N = 633841.29
 E = 800519.79

BOTTOM OF HOLE
 LAT. = 32.7396533°N
 LONG. = 103.4904051°W
 NMSP EAST (FT)
 N = 633841.29
 E = 800519.79

25 NW CORNER SEC. 19
 LAT. = 32.7406058°N
 LONG. = 103.5052876°W
 NMSP EAST (FT)
 N = 634159.14
 E = 795940.79

26 NE CORNER SEC. 19
 LAT. = 32.7405301°N
 LONG. = 103.4882576°W
 NMSP EAST (FT)
 N = 634173.96
 E = 801177.51

27 IRONHOUSE "19" STATE COM #2H
 ELEV. = 3931.8'
 LAT. = 32.7271256°N (NAD83)
 LONG. = 103.4902930°W
 NMSP EAST (FT)
 N = 629291.03
 E = 800590.46

28 SW CORNER SEC. 19
 LAT. = 32.7260645°N
 LONG. = 103.5052846°W
 NMSP EAST (FT)
 N = 628868.59
 E = 795989.28

29 SE CORNER SEC. 19
 LAT. = 32.7259897°N
 LONG. = 103.4882437°W
 NMSP EAST (FT)
 N = 628882.30
 E = 801223.98

30 SURFACE LOCATION

BOTTOM OF HOLE
 LAT. = 32.7396533°N
 LONG. = 103.4904051°W
 NMSP EAST (FT)
 N = 633841.29
 E = 800519.79

BOTTOM OF HOLE
 LAT. = 32.7396533°N
 LONG. = 103.4904051°W
 NMSP EAST (FT)
 N = 633841.29
 E = 800519.79

31 NW CORNER SEC. 19
 LAT. = 32.7406058°N
 LONG. = 103.5052876°W
 NMSP EAST (FT)
 N = 634159.14
 E = 795940.79

32 NE CORNER SEC. 19
 LAT. = 32.7405301°N
 LONG. = 103.4882576°W
 NMSP EAST (FT)
 N = 634173.96
 E = 801177.51

33 IRONHOUSE "19" STATE COM #2H
 ELEV. = 3931.8'
 LAT. = 32.7271256°N (NAD83)
 LONG. = 103.4902930°W
 NMSP EAST (FT)
 N = 629291.03
 E = 800590.46

34 SW CORNER SEC. 19
 LAT. = 32.7260645°N
 LONG. = 103.5052846°W
 NMSP EAST (FT)
 N = 628868.59
 E = 795989.28

35 SE CORNER SEC. 19
 LAT. = 32.7259897°N
 LONG. = 103.4882437°W
 NMSP EAST (FT)
 N = 628882.30
 E = 801223.98

36 SURFACE LOCATION

BOTTOM OF HOLE
 LAT. = 32.7396533°N
 LONG. = 103.4904051°W
 NMSP EAST (FT)
 N = 633841.29
 E = 800519.79

BOTTOM OF HOLE
 LAT. = 32.7396533°N
 LONG. = 103.4904051°W
 NMSP EAST (FT)
 N = 633841.29
 E = 800519.79

37 NW CORNER SEC. 19
 LAT. = 32.7406058°N
 LONG. = 103.5052876°W
 NMSP EAST (FT)
 N = 634159.14
 E = 795940.79

38 NE CORNER SEC. 19
 LAT. = 32.7405301°N
 LONG. = 103.4882576°W
 NMSP EAST (FT)
 N = 634173.96
 E = 801177.51

39 IRONHOUSE "19" STATE COM #2H
 ELEV. = 3931.8'
 LAT. = 32.7271256°N (NAD83)
 LONG. = 103.4902930°W
 NMSP EAST (FT)
 N = 629291.03
 E = 800590.46

40 SW CORNER SEC. 19
 LAT. = 32.7260645°N
 LONG. = 103.5052846°W
 NMSP EAST (FT)
 N = 628868.59
 E = 795989.28

41 SE CORNER SEC. 19
 LAT. = 32.7259897°N
 LONG. = 103.4882437°W
 NMSP EAST (FT)
 N = 628882.30
 E = 801223.98

42 SURFACE LOCATION

BOTTOM OF HOLE
 LAT. = 32.7396533°N
 LONG. = 103.4904051°W
 NMSP EAST (FT)
 N = 633841.29
 E = 800519.79

BOTTOM OF HOLE
 LAT. = 32.7396533°N
 LONG. = 103.4904051°W

OCT 22 2013

HOBBS OCD

AUG 13 2013

District I

1625 N. French Dr., Hobbs, NM 88240

Phone: (505) 392-6161 Fax: (505) 392-0720

District II

811 S. First St., Aztec, NM 88210

Phone: (505) 748-1283 Fax: (505) 748-9720

District III

1009 Rio Brazos Road, Aztec, NM 87410

Phone: (505) 334-6178 Fax: (505) 334-6170

District IV

1220 S. St. Francis Dr., Santa Fe, NM 87505

Phone: (505) 476-3460 Fax: (505) 476-3462

RECEIVED

State of New Mexico

Energy, Minerals & Natural Resources Department

OIL CONSERVATION DIVISION

1220 South St. Francis Dr.

Santa Fe, NM 87505

Form C-102

Revised August 1, 2011

Submit one copy to appropriate

District Office

☐ AMENDED REPORT

WELL LOCATION AND ACREAGE DEDICATION PLAT

¹ API Number 30-025-41050		² Pool Code 97930		³ Pool Name WC-025 G-06 S183518A; BONE SPRING	
⁴ Property Code 39319		⁵ Property Name IRONHOUSE "19" STATE COM			⁶ Well Number 3H
⁷ OGRID No. 6137		⁸ Operator Name DEVON ENERGY PRODUCTION COMPANY, L.P.			⁹ Elevation 3946.1

¹⁰ Surface Location

UL or lot no.	Section	Township	Range	Lot Idn	Feet from the	North/South line	Feet from the	East/West line	County
O	19	18 S	35 E		175	SOUTH	1810	EAST	LEA

¹¹ Bottom Hole Location If Different From Surface

UL or lot no.	Section	Township	Range	Lot Idn	Feet from the	North/South line	Feet from the	East/West line	County
B	19	18 S	35 E		476.8	NORTH	2050	EAST	LEA
¹² Dedicated Acres 160	¹³ Joint or Infill	¹⁴ Consolidation Code	¹⁵ Order No. 2051						

No allowable will be assigned to this completion until all interests have been consolidated or a non-standard unit has been approved by the division.

<p>S89°50'55"W 2618.37 FT</p> <p>NW CORNER SEC. 19 LAT. = 32.7406058°N LONG. = 103.5052878°W NMSP EAST (FT) N = 634159.14 E = 795940.73</p> <p>LOT 1</p> <p>NOTE: LATITUDE AND LONGITUDE COORDINATES ARE SHOWN USING THE NORTH AMERICAN DATUM OF 1983 (NAD83) IN DEGREES MINUTES DECIMAL SECONDS FORMAT. BASIS OF BEARING IS NEW MEXICO STATE PLANE EAST (NAD83) COORDINATES MODIFIED TO SURFACE.</p> <p>LOT 2</p> <p>LOT 3</p> <p>LOT 4</p> <p>SW CORNER SEC. 19 LAT. = 32.7260645°N LONG. = 103.5052646°W NMSP EAST (FT) N = 528868.69 E = 795989.28</p> <p>N89°50'44"E 2617.36 FT</p>		<p>S89°50'55"W 2613.37 FT</p> <p>NE CORNER SEC. 19 LAT. = 32.7405301°N LONG. = 103.4882576°W NMSP EAST (FT) N = 634172.96 E = 801177.51</p> <p>LOT 1</p> <p>LOT 2</p> <p>LOT 3</p> <p>LOT 4</p> <p>SE CORNER SEC. 19 LAT. = 32.7259897°N LONG. = 103.4882437°W NMSP EAST (FT) N = 628882.80 E = 801223.98</p> <p>N89°50'44"E 2617.36 FT</p>		<p>¹⁷ OPERATOR CERTIFICATION</p> <p>I hereby certify that the information contained herein is true and complete to the best of my knowledge and belief, and that this organization either owns a working interest or leased mineral interest in the land including the proposed bottom hole location or has a right to drill this well at this location pursuant to a contract with an owner of such a mineral or working interest, or to a voluntary pooling agreement or a compulsory pooling order heretofore entered by the division.</p> <p>Signature: <i>D. H. Cook</i> Date: 8/12/2013</p> <p>Printed Name: David H. Cook Regulatory Specialist</p> <p>E-mail Address: david.cook@dmn.com</p> <p>¹⁸ SURVEYOR CERTIFICATION</p> <p>I hereby certify that the well location shown on this plat was plotted from field notes of actual surveys made by me or under my supervision, and that the same is true and correct to the best of my belief.</p> <p>Date of Survey: FEBRUARY 28, 2013</p> <p>Signature and Seal of Professional Surveyor: <i>[Signature]</i></p> <p>Certificate Number: ELTON F. JARAMILLO, PLS 12791</p> <p>SURVEY NO. 1580</p>
--	--	---	--	--

PP: 175 FSL & 1820 FEL

OCT 22 2013

District I
1625 N. French Dr., Hobbs, NM 88240
Phone: (575) 392-6161 Fax: (575) 392-0230
District II
511 S. First St., Artesia, NM 88210
Phone: (575) 748-1283 Fax: (575) 748-9720
District III
1000 Rio Brazos Road, Aztec, NM 87410
Phone: (505) 334-6178 Fax: (505) 334-6170
District IV
1220 S. St. Francis Dr., Santa Fe, NM 87505
Phone: (505) 476-3460 Fax: (505) 476-3462

HOBBS OCD

JUN 26 2013

RECEIVED

State of New Mexico
Energy, Minerals & Natural Resources Department
OIL CONSERVATION DIVISION
1220 South St. Francis Dr.
Santa Fe, NM 87505

Form C-102
Revised August 1, 2011
Submit one copy to appropriate
District Office

☐ AMENDED REPORT

WELL LOCATION AND ACREAGE DEDICATION PLAT

¹ API Number 30025-41245	² Pool Code 97930	³ Pool Name WC-025 G065183518A; Bone Spring
⁴ Property Code 39319	⁵ Property Name IRONHOUSE "19" STATE COM	
⁷ OGRID No. 6137	⁸ Operator Name DEVON ENERGY PRODUCTION COMPANY, L.P.	⁶ Well Number 4H
		⁹ Elevation 3958.8

¹⁰ Surface Location

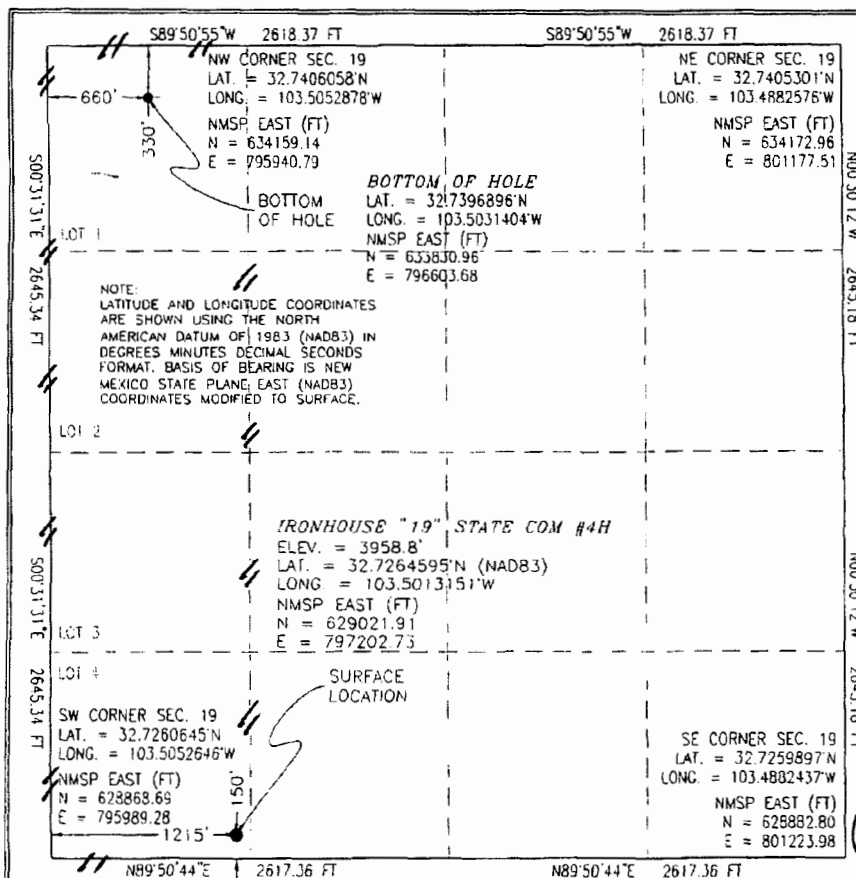
UL or lot no.	Section	Township	Range	Lot Idn	Feet from the	North/South line	Feet from the	East/West line	County
4	19	18 S	35 E		150	SOUTH	1215	WEST	LEA

¹¹ Bottom Hole Location If Different From Surface

UL or lot no.	Section	Township	Range	Lot Idn	Feet from the	North/South line	Feet from the	East/West line	County
1	19	18 S	35 E		330	NORTH	660	WEST	LEA

¹² Dedicated Acres 153.24	¹³ Joint or Infill	¹⁴ Consolidation Code	¹⁵ Order No.
--	-------------------------------	----------------------------------	-------------------------

No allowable will be assigned to this completion until all interests have been consolidated or a non-standard unit has been approved by the division.



¹⁷ OPERATOR CERTIFICATION

I hereby certify that the information contained herein is true and complete in the best of my knowledge and belief, and that this organization either owns a working interest or unleased mineral interest in the land including the proposed bottom hole location or has a right to drill this well at this location pursuant to a contract with an owner of such a mineral or working interest, or to a voluntary pooling agreement or a compulsory pooling order heretofore entered by the division.

Signature: *[Signature]* Date: 6/25/2013

David H. Cook Regulatory Specialist

david.cook@dmv.com
E-mail Address

¹⁸ SURVEYOR CERTIFICATION

I hereby certify that the well location shown on this plat was plotted from field notes of actual surveys made by me or under my supervision, and that the same is true and correct to the best of my belief.

FEBRUARY 27, 2013

Date of Survey

Signature and Seal of Professional Surveyor: *[Signature]*

Certificate Number: FIRMION F. JARAMILLO, PLS 12797

SURVEY NO. 1633

PP: 200 FSL & 330 FWL

ECG 6-26-2013

JUN 27 2013

HOEBS OCD

JUN 03 2013

Form C-102

Revised August 1, 2011

RECEIVED

District Office

☐ AMENDED REPORT

District I

1625 N. French Dr., Hobbs, NM 88240
Phone: (575) 393-9161 Fax: (575) 393-0720

District II

811 S. First St., Artesia, NM 88203
Phone: (505) 748-1263 Fax: (505) 748-9720

District III

1000 Rio Brazos Road, Aztec, NM 87410
Phone: (505) 334-6178 Fax: (505) 334-6170

District IV

1220 S. St. Francis Dr., Santa Fe, NM 87505
Phone: (505) 476-3460 Fax: (505) 476-3462

State of New Mexico
Energy, Minerals & Natural Resources Department
OIL CONSERVATION DIVISION
1220 South St. Francis Dr.
Santa Fe, NM 87505

WELL LOCATION AND ACREAGE DEDICATION PLAT

¹ API Number 30-025-40611		² Pool Code	³ Pool Name WC-025 G-06 S183518A; Bone Spring
⁴ Property Code	⁵ Property Name IRONHOUSE "20" STATE		⁶ Well Number 1H
⁷ OGRID No. 6137	⁸ Operator Name DEVON ENERGY PRODUCTION COMPANY, L.P.		⁹ Elevation 3932.7

¹⁰ Surface Location

UL or lot no.	Section	Township	Range	Lot Idn	Feet from the	North/South line	Feet from the	East/West line	County
O	20	18 S	35 E		200	SOUTH	1980	EAST	LEA

¹¹ Bottom Hole Location If Different From Surface

UL or lot no.	Section	Township	Range	Lot Idn	Feet from the	North/South line	Feet from the	East/West line	County
B	20	18 S	35 E		362	NORTH	225	EAST	LEA
¹² Dedicated Acres 160	¹³ Joint or Infill	¹⁴ Consolidation Code	¹⁵ Order No.						

No allowable will be assigned to this completion until all interests have been consolidated or a non-standard unit has been approved by the division.

¹⁶ OPERATOR CERTIFICATION I hereby certify that the information contained herein is true and complete to the best of my knowledge and belief, and that this organization either owns a working interest or undivided mineral interest in the land including the proposed bottom hole location or any right to drill this well at this location pursuant to a contract with an owner of such a mineral or working interest, or to a voluntary pooling agreement or a compulsory pooling order heretofore entered by the division. Signature: <i>[Signature]</i> Date: 5/14/2013 David H. Cook Regulatory Specialist Printed Name: david.cook@dvn.com E-mail Address:	
¹⁷ SURVEYOR CERTIFICATION I hereby certify that the well location shown on this plat was plotted from field notes of actual surveys made by me or under my supervision, and that the same is true and correct to the best of my belief. OCTOBER 27, 2012 Date of Survey: <i>[Signature]</i> Signature and Seal of Professional Surveyor: <i>[Signature]</i> Certificate Number: FIRMAR, AMILLO, PLS 12797 SURVEY NO. 1337	

PP: 2045 FEL & 863 FSL

AUG 14 2013

District I
1625 N. French Dr., Hobbs, NM 88240
Phone: (575) 393-6161 Fax: (575) 393-0720
District II
511 S. First St., Artesia, NM 88210
Phone: (575) 748-1283 Fax: (575) 748-9720
District III
1000 Rio Brazos Road, Aztec, NM 87410
Phone: (505) 334-6178 Fax: (505) 334-6179
District IV
1220 S. St. Francis Dr., Santa Fe, NM 87505
Phone: (505) 476-3460 Fax: (505) 476-3462

HOBBS OCD

DEC 13 2012

RECEIVED

State of New Mexico
Energy, Minerals & Natural Resources Department
OIL CONSERVATION DIVISION
1220 South St. Francis Dr.
Santa Fe, NM 87505

Form C-102
Revised August 1, 2011
Submit one copy to appropriate
District Office

☒ AMENDED REPORT

WELL LOCATION AND ACREAGE DEDICATION PLAT

¹ API Number 30-025-40748	² Pool Code 97930	³ Pool Name Bone Spring
⁴ Property Code 39267 39596	⁵ Property Name IRONHOUSE "20" STATE	⁶ Well Number 2H
⁷ OGRID No. 6137	⁸ Operator Name DEVON ENERGY PRODUCTION COMPANY, L.P.	⁹ Elevation 3927.8

¹⁰ Surface Location

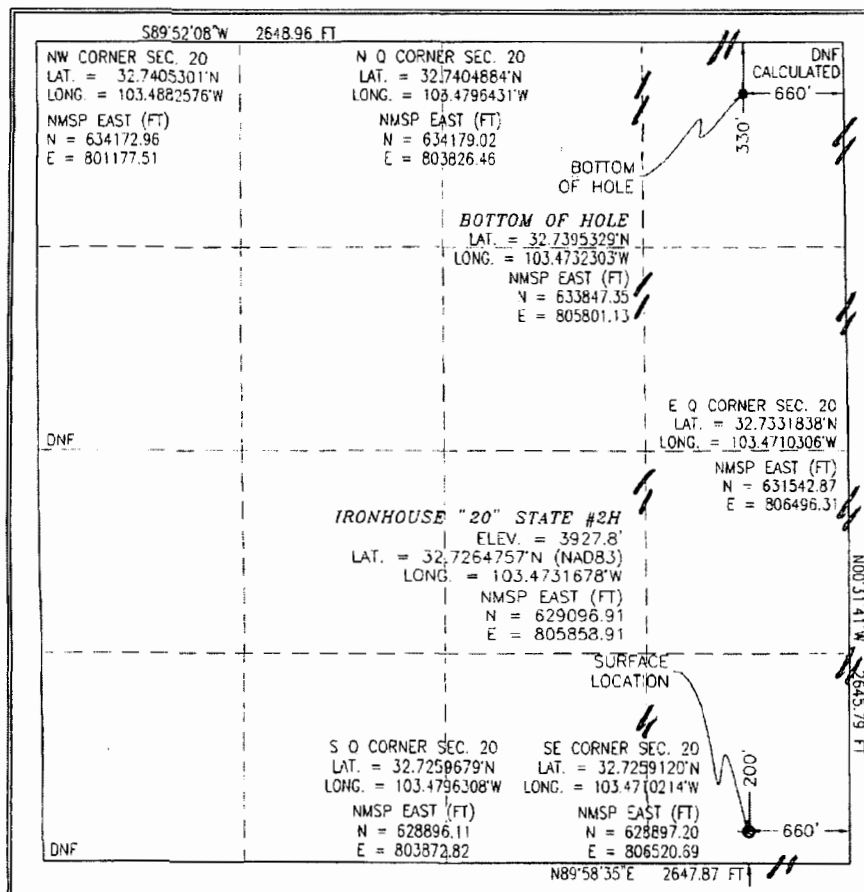
UL or lot no.	Section	Township	Range	Lot Idn	Feet from the	North/South line	Feet from the	East/West line	County
P	20	18 S	35 E		200	SOUTH	660	EAST	LEA

¹¹ Bottom Hole Location If Different From Surface

UL or lot no.	Section	Township	Range	Lot Idn	Feet from the	North/South line	Feet from the	East/West line	County
A	20	18 S	35 E		330	NORTH	660	EAST	LEA

¹² Dedicated Acres	¹³ Joint or Infill	¹⁴ Consolidation Code	¹⁵ Order No.
-------------------------------	-------------------------------	----------------------------------	-------------------------

No allowable will be assigned to this completion until all interests have been consolidated or a non-standard unit has been approved by the division.



¹⁷ OPERATOR CERTIFICATION

I hereby certify that the information contained herein is true and complete to the best of my knowledge and belief, and that this organization either owns a working interest or unleased mineral interest in the land including the proposed bottom hole location or has a right to drill this well at this location pursuant to a contract with an owner of such a mineral or working interest, or to a voluntary pooling agreement or a compulsory pooling order heretofore entered by the division.

Signature: *D. H. Cook* Date: 12/12/12

David H. Cook Regulatory Specialist
Printed Name

david.cook@dmn.com
E-mail Address

¹⁸ SURVEYOR CERTIFICATION

I hereby certify that the well location shown on this plat was plotted from field notes of actual surveys made by me or under my supervision, and that the same is true and correct to the best of my belief.

OCTOBER 24 2012
Date of Survey

Signature and Seal of Professional Surveyor

Certificate Number: FILLMORE JARAMILLO, PLS-12797

SURVEY NO. 1338

* Amended

DEC 19 2012



Devon Energy Corporation
333 West Sheridan Avenue
Oklahoma City, OK 73102-5010

405 552-7970 Phone
Erin.workman@devn.com

January 10, 2014

CERTIFIED MAIL
RETURN RECEIPT REQUESTED

Interest Owners

Re: Central Tank Battery
Ironhouse 19 State Com 1H, Ironhouse 19 State Com 2H, Ironhouse 19 State Com 3H,
Ironhouse 19 State Com 4H, Ironhouse 20 State Com 1H, Ironhouse 20 State 2H,
Sec. 19-18S-35E, Sec. 20-18S-35E
Leases: NMNM 1478 NMNM1499, NMNM1374
API: #30-025-40676, #30-025-41094, #30-025-41050, #30-025-41245, #30-025-40748,
#30-025-40611
Pool: (97930) WC-025 G-06 S183518A; Bone Spring, (97946) WC-025 G-05 A
Lea County, New Mexico

Gentlemen:

This is to advise you that Devon Energy Production Company, LP, is filing an application with the New Mexico Oil Conservation Division ("NMOCD") seeking approval to permit a Central Tank Battery, and commingle for the aforementioned wells from the aforementioned leases and pools.

A copy of our application submitted to the Division is attached.

Any objections or requests that a hearing should be held regarding this application must be submitted to the New Mexico Oil Conservation Division, Santa Fe office within 20 days from the date of this letter.

Please contact the undersigned at (405) 552-7970 should you have any questions or need anything further.

Sincerely,

A handwritten signature in black ink, appearing to read "Erin Workman". The signature is fluid and cursive.

Erin Workman
Regulatory Compliance Associate

Enclosures

CERTIFIED MAILING LIST

Mailing Reference: **Ironhouse Commingle**

<u>Repondent Name/Address:</u>	<u>Certified Mailing Number:</u>
Becky Brooks Lee Christmas P.O. Box 173 Wagon Mound, NM 87752	91 7199 9991 7032 9637 4366
Bill L. Lee, Trustee fbo Lee Family Trust, dtd 4/13/1993 176 Lee Ranch Road Lovington, NM 88260	91 7199 9991 7032 9637 4311
Brookie Anderson Green 2814 Emerson Place Midland, TX 79705	91 7199 9991 7032 9637 4342
Charles R. Lee 600 Goliad Court NW Albuquerque, NM 87107	91 7199 9991 7032 9637 4304
Elizabeth Forrest Berry P.O. Box 160 Eunice, NM 88230	91 7199 9991 7032 9637 4274
Eric Anderson 228 Ridley Road Cheyenne, WY 82009	91 7199 9991 7032 9637 4250
Giles M. Lee and Jole Lee 44 Swamp Road Lovington, NM 88260	91 7199 9991 7032 9637 4359
John Richard Anderson P.O. Box 136 Gail, TX 79738	91 7199 9991 7032 9637 4373
Lynette Flores 4700 Aurora Drive #133 Ventura, CA 93001	91 7199 9991 7032 9637 4335
Mary Lee Waldrop 5720 Aztec Lane San Angelo, TX 76903	91 7199 9991 7032 9637 4281
MRC Permian Company 5400 LBJ Freeway, Suite 1500 Dallas, TX 75240	91 7199 9991 7032 9637 4243
Sarah Anderson 5418 West 77th Street Westchester, CA 90045	91 7199 9991 7032 9637 4328
Scharbaauer Minerals, LP P.O. Box 111 Midland, TX 79702	91 7199 9991 7032 9637 4267
State of New Mexico Commissioner of Public Lands P.O. Box 1148 Santa Fe, NM 87504	91 7199 9991 7032 9637 4236
T H McElvain Oil & Gas LLLP 1050 17th Street, Suite 2500 Denver, CO 80265	91 7199 9991 7032 9637 4229
THOMASTON, LLC 1050 17th Street, Suite 2500 Denver, CO 80265	91 7199 9991 7032 9637 4380
William Richard Anderson, Trustee fbo Malcolm S. Anderson Descendant Trust, dtd 7/2/98 2935 Meander Road Windsor, CO 80550	91 7199 9991 7032 9637 4298

IRONHOUSE 19 1H, 2H, 3H, 4H & IRONHOUSE 20 1H, 2H LEA COUNTY, NEW MEXICO

13

17

16

24

18S - 34E

21

18S - 35E

20

25

30

29

28

Legend

- PROJECT AREAS
- ERIK R ANDERSON / SARAH ANDERSON
- ST OF NM VB 1374
- ST OF NM VB 1478
- ST OF NM VB 1499

31

32

This map is for illustrative purposes only and is neither a legally recorded map nor a survey and is not intended to be used as one. Devon makes no warranty, representation, or guarantee of any kind regarding this map.



1:25,272

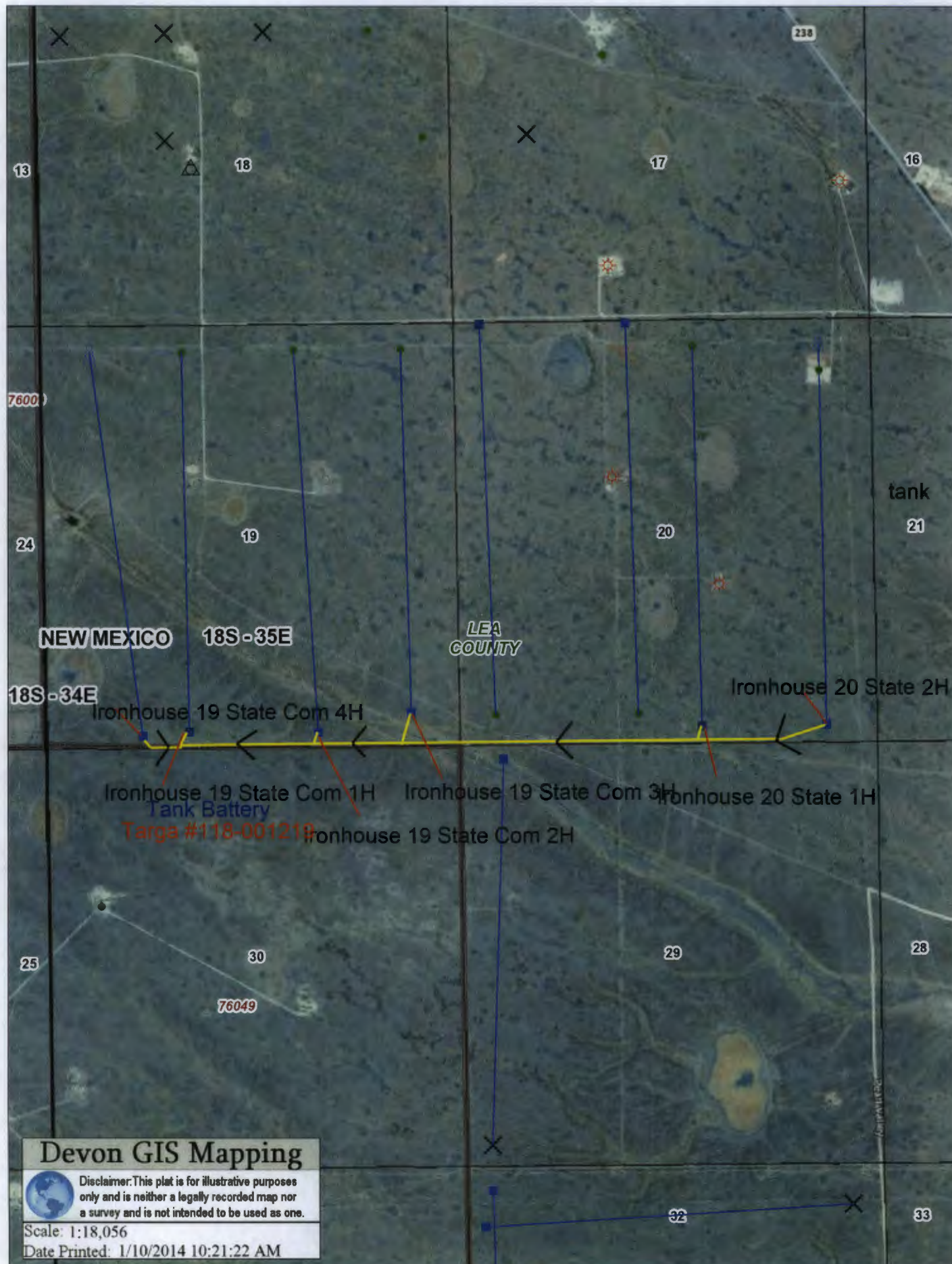
Scale: 1" = 1,000'

Made by: Daniel Szwedek
Made for: Erik Workman
Date: 6-16-13
County: Lea, NM

When: 2013/06/14 10:00:00 AM
User: daniel.szwedek@devon.com
Project: Ironhouse 19 & 20
Map: Ironhouse 19 & 20

DATA SOURCES:

Lea County GIS - TIGER, NADA - RDBMS, Cadd - STREETS



Gas Meter (A) (M) (C)



North Permian Basin Region
P.O. Box 740
Sundown, TX 79372-0740
(806) 229-8121

Lab Team Leader - Sheila Hernandez
(432) 495-7240

ANALYTICAL REPORT

Company:	DEVON ENERGY CORPORATION	Report Date:	07/31/13
Region:	PERMIAN BASIN	Date Range:	7/30/12 - 8/1/13
Area:	ARTESIA, NM	Sales RDT:	33521.1
Lease/Platform:	IRON HOUSE	Account Manager:	GENE ROGERS (575) 910-1022
		Analysis Cost: (Per Reading)	\$15.00

Location	Sample Point	Sample		Reading	Units
		Date	Item		
1	WELLHEAD	07/24/13	API GRAVITY	37 @	60°F
3	WELLHEAD	07/24/13	API GRAVITY	38 @	60°F

mL

Precision Gas Measurement, Inc.
Natural Gas Report

Sample Information

Sample Information	
Company Name	DEVON ENERGY
Lease Name	IRONHOUSE 19-1 TEST
Location ID	67749058
Sample Date	1/14/2013
WATER	
Method Name	BTUH2S.met
Injection Date	2013-01-15 08:46:27

Component Results

Component Name	Norm%	Gross HV (Dry) (BTU / Ideal cu.ft.)	Gross HV (Sat.) (BTU / Ideal cu.ft.)	Relative Gas Density (Dry)	GPM (Dry) (Gal. / 1000 cu.ft.)
H2S	0.0000	0.0	0.0	0.00000	0.000
NITROGEN	4.1584	0.0	0.0	0.04022	0.459
CARBON DIOXIDE	0.4684	0.0	0.0	0.00712	0.080
METHANE	66.3796	672.0	660.3	0.36768	11.299
ETHANE	16.1863	287.1	282.1	0.16805	4.346
PROPANE	8.6119	217.2	213.4	0.13112	2.382
I-BUTANE	0.8939	29.1	28.6	0.01794	0.294
N-BUTANE	2.0060	65.6	64.5	0.04026	0.635
I-PENTANE	0.4345	17.4	17.1	0.01082	0.160
N-PENTANE	0.3637	14.6	14.4	0.00906	0.132
C6+	0.4973	25.6	25.1	0.01600	0.217
Water	0.0000	0.0	0.0	0.00000	0.000
Total:	100.0000	1328.6	1305.5	0.80826	20.004

Results Summary

Result	Dry	Sat.
Total Normalized Mole%	100.0000	100.0000
Pressure Base (psia)	14.730	
Flowing Temperature (Deg. F)	36.0	
Flowing Pressure (psia)	130.0	
Water Mole%	-	1.7407
Gross Heating Value (BTU / Ideal cu.ft.)	1328.6	1305.5
Gross Heating Value (BTU / Real cu.ft.)	1334.3	1311.7
Relative Density (G), Real	0.8114	0.8085
Compressibility (Z) Factor	0.9957	0.9953
Total GPM	20.004	19.764
Wobbe Index	1481.3	1458.8



LABORATORY SERVICES
Natural Gas Analysis

www.permianls.com

575.397.3713 2609 W Marland Hobbs NM 88240

Total Sulfur in Crude

Devon Energy
Attention: Robert Hernandez
P. O. Box 250
Artesia, New Mexico 88211-0250

07/02/13

	Total Sulfur	API Gravity	Specific Gravity
Aquilla 22 # 1	0.1134 wt. %	37.4	0.8377
Aquilla 22 # 2	0.1211 wt. %	37.9	0.8353
Antares 23 Battery	0.1066 wt. %	38.4	0.8328
Ironhouse 19 Battery	0.1324 wt. %	39.0	0.8299
Gaucha 21 Fed 1H	0.1839 wt. %	40.9	0.8207
Gaucha 21 Fed 2H	0.2609 wt. %	37.1	0.8392
Bellatrix 28 Battery	0.1002 wt. %	40.7	0.8217

WC Name	Month	Year	Oil Prod	gasProd
IRONHOUSE 19 STATE COM 1H	07	2013	3484.09	1516
IRONHOUSE 19 STATE COM 1H	08	2013	6498.00	3381
IRONHOUSE 19 STATE COM 1H	09	2013	5237.58	3366
IRONHOUSE 19 STATE COM 1H	10	2013	4854.10	1524
IRONHOUSE 19 STATE COM 1H	11	2013	3096.58	1391
IRONHOUSE 19 STATE COM 1H	12	2013	4362.59	2300
IRONHOUSE 19 STATE COM 3H	07	2013	8449.45	4089
IRONHOUSE 19 STATE COM 3H	08	2013	16198.44	7853
IRONHOUSE 19 STATE COM 3H	09	2013	11064.68	6104
IRONHOUSE 19 STATE COM 3H	10	2013	10530.95	5304
IRONHOUSE 19 STATE COM 3H	11	2013	6175.89	1905
IRONHOUSE 19 STATE COM 3H	12	2013	9446.41	3192
IRONHOUSE 19 STATE COM 3H	12	2013	8656.55	2565
IRONHOUSE 20 STATE COM 1H	07	2013	268.26	0
IRONHOUSE 20 STATE COM 1H	08	2013	1237.77	991
IRONHOUSE 20 STATE COM 1H	09	2013	2747.41	2238
IRONHOUSE 20 STATE COM 1H	10	2013	3083.83	1914
IRONHOUSE 20 STATE COM 1H	11	2013	2527.12	859
IRONHOUSE 20 STATE COM 1H	12	2013	3756.69	1326