

3R - 440

GWMR

05 / 22 / 2012

3R-440

Animas Environmental Services, LLC

624 E. Comanche . Farmington, NM 87401 . TEL 505-564-2281 . FAX 505-324-2022 . www.animasenvironmental.com

May 22, 2012

Mr. Glen von Gonten
New Mexico Oil Conservation Division
1220 South St. Francis Drive
Santa Fe, New Mexico 87505

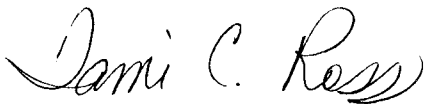
**RE: Enterprise Products Company Lateral K-31 December 2011 Pipeline Release
Site Investigation Report**

Dear Mr. von Gonten:

On behalf of Enterprise Products Company (Enterprise), Animas Environmental Services, LLC (AES) is pleased to submit one copy of the Site Investigation Report for the Lateral K-31 pipeline release located in Rio Arriba County, New Mexico.

If you have any questions regarding AES' qualifications or the contents of the report, please do not hesitate to contact Ross Kennemer or Tami Ross at (505) 564-2281.

Sincerely,



Tami C. Ross, CHMM
Project Manager

Enclosure: Site Investigation Report

Cc: Mr. Brandon Powell
New Mexico Oil Conservation Division
1000 Rio Brazos Road
Aztec, New Mexico 87410

Mr. Aaron Dailey
Enterprise Products Company
614 Reilly Avenue
Farmington, NM 87401

RECEIVED
MAY 23 2012
10:26 AM
NEW MEXICO OIL CONSERVATION DIVISION





Animas Environmental Services, LLC

www.animasenvironmental.com

624 E. Comanche
Farmington, NM 87401
505-564-2281

Durango, Colorado
970-403-3274

Prepared for:

Brandon Powell
New Mexico Oil Conservation Division
1000 Rio Brazos Road
Aztec, New Mexico 87410

Glenn von Gonten

New Mexico Oil Conservation Division
1220 South St. Francis Drive
Santa Fe, New Mexico 87505

Site Investigation Report
Enterprise Products Company
Lateral K-31 December 2011
Pipeline Release
SE¼ SW¼ Section 16, T25N, R6W
Rio Arriba County, New Mexico

May 16, 2012

Prepared on behalf of:

Enterprise Products Company
614 Reilly Avenue
Farmington, NM 87401

Prepared by:

Animas Environmental Services, LLC
624 E. Comanche
Farmington, New Mexico 87401

Contents

1.0	Introduction	1
1.1	Site Location and NMOCD Ranking	1
1.2	Release Information	1
1.3	Initial Release Assessment	1
2.0	Release Investigation – March 2012	2
2.1	Permits and Access Agreements	2
2.2	Utilities Notification	2
2.3	Project Notification	2
2.4	Health and Safety Plan	2
2.5	Soil Borings	3
2.5.1	Drilling Methods	3
2.5.2	Soil Sample Collection	3
2.5.3	Soil Field Screening	3
2.5.4	Soil Laboratory Analyses	4
2.6	Groundwater	4
2.6.1	Groundwater Sample Collection	4
2.6.2	Laboratory Analyses - Groundwater	4
2.7	Sample Preservation and Handling	4
3.0	Site Investigation Results	4
3.1	Soil	4
3.2	Groundwater	5
4.0	Conclusion and Recommendations	5
5.0	Certification	6
6.0	References	7

Figures

- Figure 1. Topographic Site Location Map
- Figure 2. Aerial Site Map
- Figure 3. Soil Sample Locations and Results, March 2012
- Figure 4. Groundwater Analytical Results, March 2012
- Figure 5. Dissolved Benzene Concentration Contours, March 2012

Tables

- Table 1. Summary of Soil Field-Screening and Laboratory Analytical Results
- Table 2. Summary of Groundwater Laboratory Analytical Results

Appendices

- Appendix A. Soil Boring Logs
- Appendix B. Soil and Groundwater Laboratory Analytical Reports

1.0 Introduction

Animas Environmental Services, LLC (AES), on behalf of Enterprise Products Company, Inc. (Enterprise), has prepared this Site Investigation Report for the Lateral K-31 pipeline release that was discovered and confirmed in December 2011.

1.1 Site Location and NMOCD Ranking

The release area is located on Federal land under jurisdiction of the Bureau of Land Management (BLM) within the SE¼ SW¼, Section 16, T25N, R6W, Rio Arriba County, New Mexico. Latitude and longitude of the release were recorded as N36.39373 and W107.47519, respectively. The release location is within the Largo Wash floodplain. Surface runoff drains northeast towards Largo Wash, which is 1,550 feet east of the release location. Depth of groundwater is approximately 14 feet below ground surface (bgs). A topographic site location map is included as Figure 1, and an aerial map showing the release location is included as Figure 2.

Prior to initial site work, the New Mexico Oil Conservation Division (NMOCD) database was reviewed along with the New Mexico Office of the State Engineer (NMOSE) database for information to assist in site ranking. Once on-site, AES personnel assessed the NMOCD ranking criteria using topographical interpretation, Global Position System (GPS) elevation readings, and visual reconnaissance. No domestic or private registered water wells were identified within 1,000 feet of the location. The location was assessed a NMOCD ranking score of 20.

1.2 Release Information

A release was reported at the location on December 2, 2011, by Enterprise personnel, and on the same date Enterprise personnel were dispatched to locate and isolate the leak. The line repair was also completed on December 2, 2011. The cause of the release was identified as a corrosion hole on the underside of the line.

1.3 Initial Release Assessment

On December 8, 2011, Tami Ross of AES met with Enterprise representatives at the location to complete an initial release assessment. Four test holes were each excavated to a total depth of 15.5 feet bgs, from which a total of six soil samples were collected for laboratory analysis. A groundwater sample from a groundwater monitor well labeled MW-4, which is located near the release area, was collected for laboratory analysis. The soil samples were field screened for volatile organic compounds (VOCs) with a photo-ionization detector (PID) organic vapor meter (OVM). VOC readings (via OVM) and soil laboratory analytical results for total benzene, toluene, ethylbenzene, and total xylenes (BTEX) and total petroleum hydrocarbons (TPH) exceeded applicable New Mexico Oil Conservation Division (NMOCD) action levels in two of the four test holes (TP-3 and TP-4). Groundwater was not

encountered in the test holes; however, depth to water was measured at 14 feet bgs in the nearby groundwater monitor well. The laboratory analytical results for the groundwater sample collected from this well showed reported benzene and total BTEX concentrations below laboratory detection limits. Details of the initial release assessment were submitted to Enterprise in a letter report dated January 20, 2012.

Based on the field screening readings, laboratory analytical results, and the shallow depth of groundwater, AES and Enterprise determined that a limited investigation of the release extents would be appropriate prior to implementing further mitigation measures.

2.0 Release Investigation – March 2012

On March 15 and 16, 2012, AES completed an additional site investigation in order to delineate the full extent of petroleum hydrocarbon impact on subsurface soils and groundwater resulting from the release. The investigation included the installation of 12 soil borings and the collection of soil and groundwater samples in accordance with U.S. Environmental Protection Agency (USEPA) Environmental Response Team's Standard Operating Procedures (SOPs), and applicable American Society of Testing and Materials (ASTM) standards.

2.1 *Permits and Access Agreements*

No property access agreements were necessary; however, Enterprise obtained necessary approval from the BLM prior to implementation of the investigation.

2.2 *Utilities Notification*

AES utilized the New Mexico One-Call system to identify and mark all underground utilities at the site before initiating the investigation.

2.3 *Project Notification*

AES notified Aaron Daily and Johnny Sandoval of Enterprise by telephone 48 hours prior to beginning the investigation.

2.4 *Health and Safety Plan*

AES has a company health and safety plan in place, and each employee is required to complete a health and safety orientation prior to participating in field operations for the first time. All on-site personnel are 40-hour HazWoper trained in accordance with OSHA regulations outlined in 29 CFR 1910.120(e). Prior to the start of the site investigation, AES prepared and implemented a comprehensive site-specific Job Safety Analysis (JSA) addressing the site investigation activities and associated soil and groundwater sampling. All employees and subcontractors were required to read and sign the JSA to acknowledge their

understanding of the information contained within the JSA. The JSA was implemented and enforced on site by the assigned Site Safety and Health Officer.

2.5 Soil Borings

On March 15 and 16, 2012, AES installed 12 soil borings (SB-1 through SB-12) in order to define the lateral and vertical extent of soil contamination and the lateral extent of groundwater contamination. All soil borings were advanced to a total depth of 16 feet bgs. The local site lithology consists of fine sand from the surface to 2 feet bgs, sandy clay from 2 feet bgs to 14 feet bgs, and fine sand at 14 feet bgs to 16 feet bgs. The locations of soil borings are presented on Figure 3.

2.5.1 Drilling Methods

Soil borings were advanced with a GeoProbe DT 6620 track-mounted direct push rig operated by Earth Worx, Los Lunas, New Mexico.

2.5.2 Soil Sample Collection

Soil samples were collected from a continuously driven core-barrel during advancement of the borings. Soil samples were collected from each core barrel and then split for field screening of VOCs with a PID-OVM and for laboratory analysis. The soil samples submitted for laboratory analysis were collected from the zone with highest OVM reading and capillary fringe.

For each boring, a soil boring log was completed. These logs recorded sample identification, depth collected, and method of collection, as well as observations of soil moisture, color, grain size, contaminant presence, and overall stratigraphy. Soil boring logs are included in Appendix A.

2.5.3 Soil Field Screening

Samples were collected at 4 foot intervals from each soil boring and field screened for VOC vapors utilizing a PID-OVM calibrated with isobutylene gas. Once collected, the soil samples to be field screened were immediately placed in 1 gallon Ziploc bags and sealed. The soil samples were then allowed to warm to approximately 80°F. Approximately 10 minutes were allowed for the soil to be heated and for any VOCs in the soil to accumulate in the headspace of the bag. During the initial stages of headspace development, the sample was gently disaggregated to promote vapor development. VOCs were then measured by inserting the sampling tube of the PID-OVM into a small opening in the seal of the bag. The highest (peak) measurements were recorded onto the soil boring logs.

2.5.4 Soil Laboratory Analyses

Soil samples collected from the borings were submitted to a USEPA-approved laboratory, Hall Environmental Analysis Laboratory (Hall), Albuquerque, New Mexico, for laboratory analysis of the following parameters:

- BTEX per USEPA Method 8021;
- TPH – GRO/DRO per USEPA Method 8015 Modified;

2.6 Groundwater

2.6.1 Groundwater Sample Collection

Groundwater was encountered in each soil boring between 14 to 16 feet bgs. A total of 12 groundwater samples (SB-1W through SB-12W) were collected from the borings using new and dedicated disposable bailers.

2.6.2 Laboratory Analyses - Groundwater

All groundwater analytical samples were analyzed for the following parameters:

- BTEX per USEPA Method 8021

2.7 Sample Preservation and Handling

Once collected, all samples were preserved in laboratory-supplied containers and stored in an insulated cooler containing ice. Samples were shipped via bus to the laboratory by Hall personnel in insulated coolers containing ice at less than 6°C.

3.0 Site Investigation Results

3.1 Soil

Soil samples (SB-1 through SB-12) were collected from each boring for field screening and laboratory analysis. OVM field screening readings ranged from 10.1 in SB-4 up to 3,519 ppm in SB-9, with VOC concentrations above the NMOCD threshold of 100 ppm in:

- SB-1 at 10 feet bgs (2,769 ppm);
- SB-2 at 2 to 4 feet bgs (184 ppm) and 12 feet bgs (1,683 ppm);
- SB-3 at 12 feet bgs (417 ppm);
- SB-4 at 4 feet bgs (482 ppm);
- SB-9 at 10 feet bgs (3,519 ppm) and 14 feet bgs (128 ppm);
- SB-10 at 4 feet bgs (211 ppm); and
- SB-11 at 10 feet bgs (3, 210 ppm).

Soil laboratory analytical results for all samples were below NMOCD action levels for benzene and total BTEX. TPH concentrations exceeded the NMOCD action level in SB-1 at 10 feet bgs (280 mg/kg), SB-9 at 10 feet bgs (440 mg/kg) and 14 feet bgs (8,700 mg/kg), and SB-11 at 10 feet bgs (1,340 mg/kg). Tabulated analytical results are presented in Table 1 and on Figure 3. Soil laboratory analytical reports are presented in Appendix B.

3.2 Groundwater

Groundwater samples (SB-1W through SB-12W) were collected from borings SB-1 through SB-12 for laboratory analysis. Analytical results showed that benzene concentrations exceeded the WQCC standard of 10 µg/L in eight groundwater samples, SB-1W (28 µg/L), SB-2W (46 µg/L), SB-3W (1,100 µg/L), SB-4W (130 µg/L), SB-7W (37 µg/L), SB-9W (430 µg/L), SB-11W (1,400 µg/L), and SB-12W (13 µg/L). All other samples had BTEX concentrations either below laboratory detection limits or well below applicable WQCC standards. Tabulated groundwater analytical results are presented in Table 2 and on Figure 4. A dissolved phase benzene concentration contour map is provided in Figures 5. Groundwater analytical laboratory reports are presented in Appendix B.

4.0 Conclusion and Recommendations

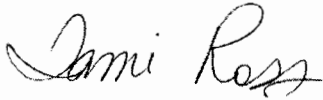
A total of 12 soil borings (SB-1 through SB-12) were installed by AES on March 15 and 16, 2012. Soil samples collected for laboratory analysis showed that contaminant concentrations exceeded NMOCD action levels for TPH in borings SB-1, SB-9, and SB-11. The highest TPH concentration was reported in SB-9 with 8,700 mg/kg.

Dissolved phase analytical results indicate groundwater is impacted above the WQCC standard for benzene in SB-1W, SB-2W, SB-3W, SB-4W, SB-7W, SB-9W, SB-11W, and SB-12W. The highest concentration for benzene was reported in SB-11W with 1,400 µg/L. The dissolved phase concentration contour map for benzene shows that the release appears to have migrated primarily north along the pipeline corridor and to the northeast (following gradient) towards Largo Canyon Wash. The highest dissolved phase concentrations were noted in SB-3W and SB-11W.

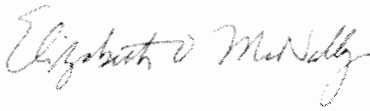
Based on the depth and lateral extent of contaminant impacted soil and groundwater, AES believes that the most practical and cost-effective remedial approach will be mechanical removal of petroleum hydrocarbon contaminants. The sandy soils at the site make air sparging and soil vapor extraction a technically feasible remediation alternative. AES recommends installing up to five permanent groundwater monitor wells and collecting additional monitoring and sampling data from which a corrective action plan can be developed.

5.0 Certification

I, the undersigned, am personally familiar with the information presented in this Site Investigation Report, prepared on behalf of Enterprise Products Company, Inc. for the Lateral K-31 December 2011 pipeline release. I attest that it is true and complete to the best of my knowledge.



Tami C. Ross, CHMM
Project Manager



Elizabeth McNally, P.E.
Principal

6.0 References

Animas Environmental Services, LLC (AES). Enterprise *Lateral K-31 Letter Report*, January 20, 2012

New Mexico Oil Conservation Division. *Guidelines for Remediation of Leaks, Spills, and Releases*. October 13, 1993.

U.S. Environmental Protection Agency (USEPA). 1982. *Methods for Chemical Analysis for Water and Wastes*. Document EPA-600, July, 1982.

USEPA. 1992. SW-846, 3rd Edition, *Test Methods for Evaluating Solid Waste: Physical Chemical Methods*, dated November, 1986, and as amended by Update One, July, 1992.

USEPA. 1991. *Site Characterization for Subsurface Remediation*, EPA 625/4-91-026, November, 1991.

USEPA. 1997. *Expedited Site Assessment Tools for Underground Storage Tank Sites*. OSWER 5403G and EPA 510B-97-001, March, 1997.

USEPA. 2001. Contract Laboratory Program (CLP) Guidance for Field Samplers. OSWER 9240.0-35, EPA 540-R-00-003. June, 2001.

GONZALES MESA QUADRANGLE
NEW MEXICO - RIO ARriba COUNTY
1963



FIGURE 1

TOPOGRAPHIC SITE LOCATION MAP

ENTERPRISE PRODUCTS COMPANY
LATERAL K-31 DECEMBER 2011 RELEASE LOCATION
RIO ARriba COUNTY, NEW MEXICO
SE¼, SW¼, SECTION 16, T25N, R6W
N36.39373°, W107.47519°



Animas Environmental Services, LLC

DRAWN BY:
C. Lameman

DATE DRAWN:
December 2, 2011

REVISIONS BY:
C. Lameman

DATE REVISED:
January 18, 2012

CHECKED BY:
T. Ross

DATE CHECKED:
January 18, 2012

APPROVED BY:
E. McNally

DATE APPROVED:
January 18, 2012



AERIAL SOURCE: (c) MICROSOFT CORPORATION BING MAPS



Animas Environmental Services, LLC

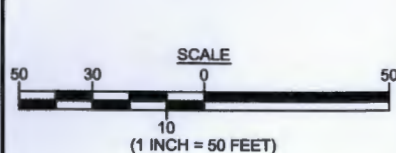
DRAWN BY: C. Lameman	DATE DRAWN: December 2, 2011
REVISIONS BY: C. Lameman	DATE REVISED: May 15, 2012
CHECKED BY: T. Ross	DATE CHECKED: May 15, 2012
APPROVED BY: E. McNally	DATE APPROVED: May 15, 2012

FIGURE 2

AERIAL SITE MAP
ENTERPRISE PRODUCTS COMPANY
LATERAL K-31 DECEMBER 2011 RELEASE LOCATION
RIO ARRIBA COUNTY, NEW MEXICO
SE $\frac{1}{4}$, SW $\frac{1}{4}$, SECTION 16, T25N, R6W
N36.39373, W107.47519

Soil Field Screening and Laboratory Analytical Results								
Sample ID	Date Sampled	Depth	OVM Result	Benzene	BTEX	GRO	DRO	TPH
		ft	ppm	mg/kg	mg/kg	mg/kg	mg/kg	mg/kg
NMOCD Action Level			100	10	50	NE	NE	100
SB-1	16-Mar-12	10	2,769	<0.49	5.6	190	89	280
		14	27	<0.046	<0.23	<4.6	<9.7	<14
SB-2	16-Mar-12	2 to 4	184	0.070	0.71	5.3	<10	5.3
		12	1,683	<0.049	<0.25	<4.9	<10	<15
SB-3	16-Mar-12	12	417	<0.049	<0.25	<4.9	<10	<15
		14	39	<0.048	<0.24	<4.8	<10	<15
SB-4	16-Mar-12	4	482	0.11	2.4	10	20	30
		14	10.1	<0.048	<0.24	<4.6	<9.8	<14
SB-5	16-Mar-12	4	70.5	<0.048	0.24	<4.8	<9.7	<15
		14	10.4	<0.048	<0.24	<4.8	<9.6	<14
SB-6	16-Mar-12	2	78.9	<0.097	0.31	11	77	88
		14	17.3	<0.049	<0.24	<4.9	<10	<15
SB-7	16-Mar-12	6	40.3	<0.047	<0.24	<4.7	<10	<15
		14	20.5	<0.049	<0.25	<4.9	<9.9	<15
SB-8	16-Mar-12	4	39.1	<0.050	0.20	<5.0	<10	<15
		14	17.3	<0.047	0.098	<4.7	<9.9	<15
SB-9	16-Mar-12	10	3,519	0.51	31	190	250	440
		14	128	29	1,150	6,700	2,000	8,700
SB-10	16-Mar-12	4	211	<0.047	0.20	5.8	32	38
		14	19.1	<0.048	<0.24	<4.8	<9.9	<15
SB-11	16-Mar-12	10	3,210	0.67	108	1,100	240	1,340
		14	23.7	<0.048	<0.24	7.0	<10	7.0
SB-12	16-Mar-12	4	10.9	<0.048	<0.24	<4.8	<10	<15
		14	10.2	0.070	0.070	<4.8	<10	<15
ALL SAMPLES WERE ANALYZED PER EPA METHOD 8021 AND 8015.								

ALL SAMPLES WERE ANALYZED PER EPA METHOD 8021 AND 8015.



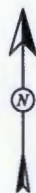
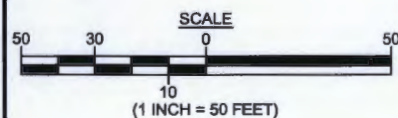
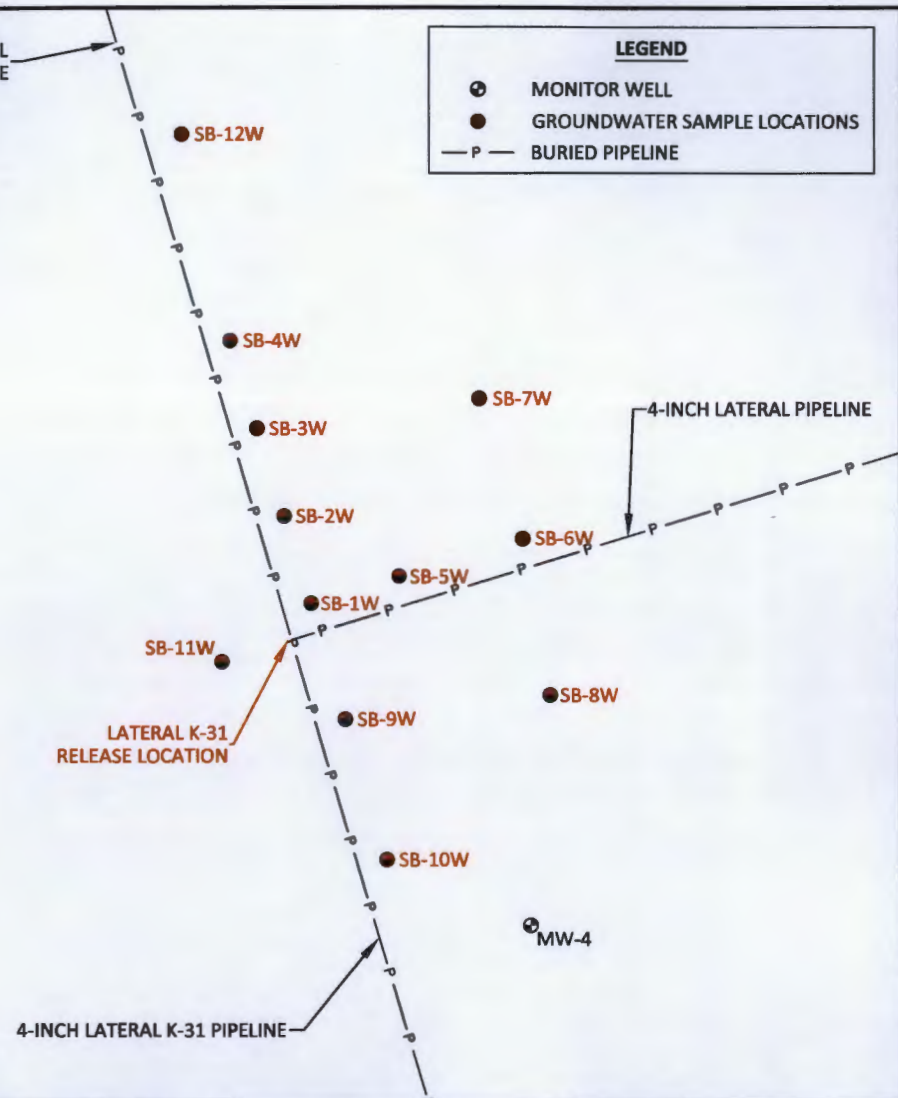
DRAWN BY: C. Lameman	DATE DRAWN: May 15, 2012
REVISIONS BY: C. Lameman	DATE REVISED: May 15, 2012
CHECKED BY: T. Ross	DATE CHECKED: May 15, 2012
APPROVED BY: E. McNally	DATE APPROVED: May 15, 2012

FIGURE 3

SOIL SAMPLE LOCATIONS AND RESULTS, MARCH 2012
 ENTERPRISE PRODUCTS COMPANY
 LATERAL K-31 DECEMBER 2011 RELEASE LOCATION
 RIO ARRIBA COUNTY, NEW MEXICO
 SE¼, SW¼, SECTION 16, T2SN, R6W
 N36.39373, W107.47519

Groundwater Laboratory Analytical Results					
Sample ID	Date Sampled	Benzene	Toluene	Ethylbenzene	Total Xylenes
		µg/L	µg/L	µg/L	µg/L
WQCC STANDARD		10	750	750	620
SB-1W	15-Mar-12	28	<2.0	2.0	<4.0
SB-2W	15-Mar-12	46	5.9	<2.0	<4.0
SB-3W	15-Mar-12	1,100	300	<20	75
SB-4W	15-Mar-12	130	17	<5.0	<10
SB-5W	16-Mar-12	5.8	2.5	<2.0	<4.0
SB-6W	16-Mar-12	1.2	<1.0	<1.0	<2.0
SB-7W	16-Mar-12	37	<2.0	<2.0	<4.0
SB-8W	16-Mar-12	2.2	<2.0	<2.0	<4.0
SB-9W	16-Mar-12	430	670	70	400
SB-10W	16-Mar-12	7.9	9.1	<20	5.1
SB-11W	16-Mar-12	1,400	98	<20	140
SB-12W	15-Mar-12	13	7.0	<2.0	4.3
ALL SAMPLES WERE ANALYZED PER EPA METHOD 8021.					

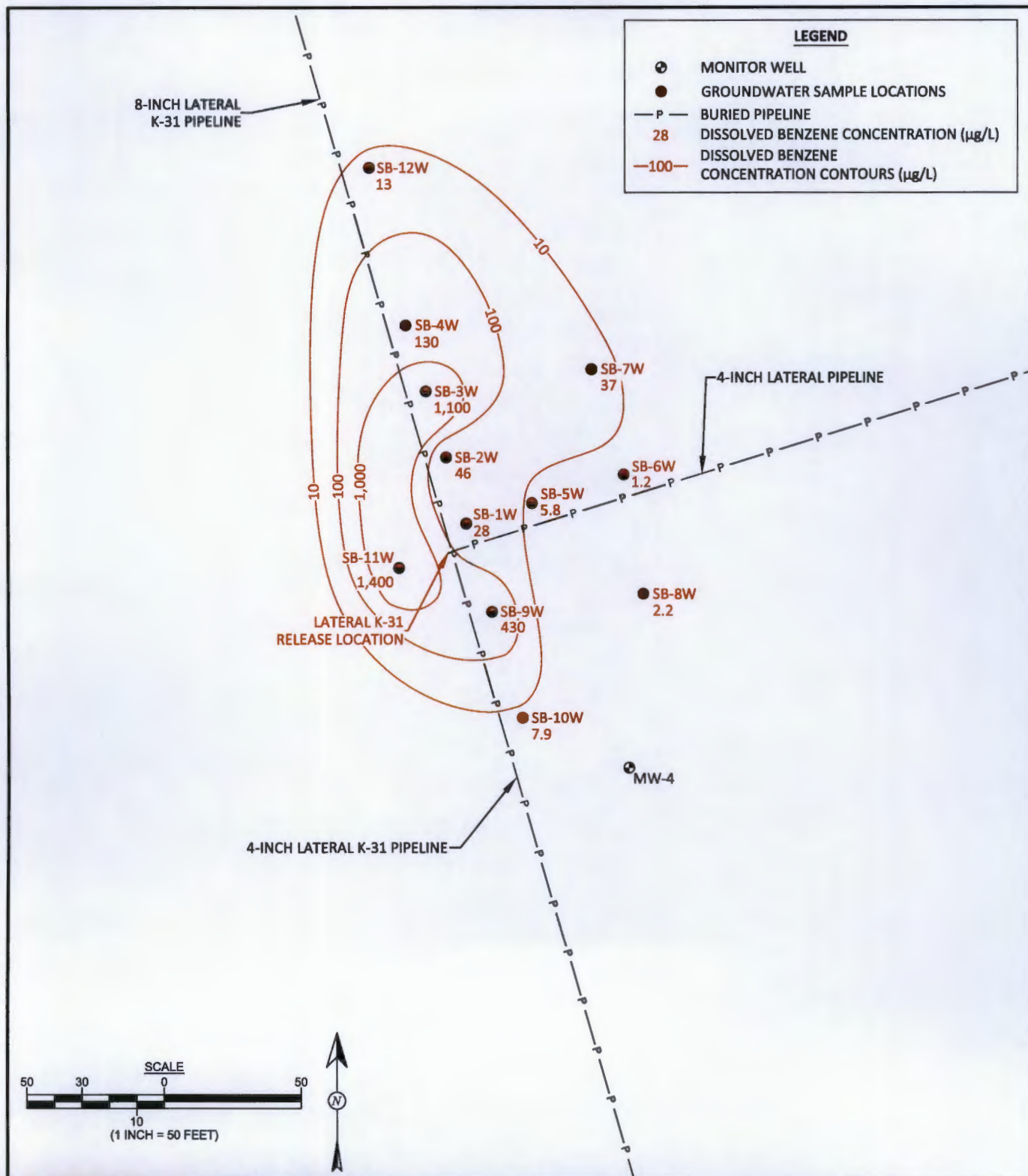
ALL SAMPLES WERE ANALYZED PER EPA METHOD 8021.



DRAWN BY: C. Lameman	DATE DRAWN: May 15, 2012
REVISIONS BY: C. Lameman	DATE REVISED: May 15, 2012
CHECKED BY: T. Ross	DATE CHECKED: May 15, 2012
APPROVED BY: E. McNally	DATE APPROVED: May 15, 2012

FIGURE 4

GROUNDWATER ANALYTICAL RESULTS, MARCH 2012
 ENTERPRISE PRODUCTS COMPANY
 LATERAL K-31 DECEMBER 2011 RELEASE LOCATION
 RIO ARriba COUNTY, NEW MEXICO
 SE¼, SW¼, SECTION 16, T25N, R6W
 N36.39373, W107.47519



Animas Environmental Services, LLC

DRAWN BY: C. Lameman	DATE DRAWN: May 15, 2012
REVISIONS BY: C. Lameman	DATE REVISED: May 15, 2012
CHECKED BY: T. Ross	DATE CHECKED: May 15, 2012
APPROVED BY: E. McNally	DATE APPROVED: May 15, 2012

FIGURE 5

**DISSOLVED BENZENE CONCENTRATION
CONTOURS, MARCH 2012**
ENTERPRISE PRODUCTS COMPANY
LATERAL K-31 DECEMBER 2011 RELEASE LOCATION
RIO ARriba COUNTY, NEW MEXICO
SE¼, SW¼, SECTION 16, T25N, R6W
N36.39373, W107.47519

TABLE 1
SUMMARY OF SOIL FIELD-SCREENING AND LABORATORY ANALYTICAL RESULTS
Enterprise Products Company Lateral K-31 Pipeline December 2011 Release
Rio Arriba County, New Mexico

Sample ID	Date Sampled	Depth (ft)	VOCs OVM (ppm)	Benzene (mg/kg)	Toluene (mg/kg)	Ethylbenzene (mg/kg)	Xylene (mg/kg)	BTEX (mg/kg)	GRO (C6-C10) (mg/kg)	DRO (C10-C22) (mg/kg)	TPH (mg/kg)
	NMOCD Action Level		100	10	NE	NE	NE	50	NE	NE	100
SB-1	15-Mar-12	10	2,769	<0.49	<0.49	0.73	4.9	5.6	190	89	280
		14	27	<0.046	<0.046	<0.046	<0.092	<0.23	<4.6	<9.7	<14
SB-2	15-Mar-12	2 to 4	184	0.070	0.10	0.054	0.49	0.71	5.3	<10	5.3
		12	1,683	<0.049	<0.049	<0.049	<0.098	<0.25	<4.9	<10	<15
SB-3	15-Mar-12	12	417	<0.049	<0.049	<0.049	<0.099	<0.25	<4.9	<10	<15
		14	39	<0.048	<0.048	<0.048	<0.096	<0.24	<4.8	<10	<15
SB-4	15-Mar-12	4	482	0.11	0.55	0.16	1.6	2.4	10	20	30
		14	10.1	<0.048	<0.048	<0.048	<0.097	<0.24	<4.6	<9.8	<14
SB-5	16-Mar-12	4	70.5	<0.048	<0.048	<0.048	0.24	0.24	<4.8	<9.7	<15
		14	10.4	<0.048	<0.048	<0.048	<0.095	<0.24	<4.8	<9.6	<14
SB-6	16-Mar-12	2	78.9	<0.097	<0.097	<0.097	0.31	0.31	11	77	88
		14	17.3	<0.049	<0.049	<0.049	<0.097	<0.24	<4.9	<10	<15
SB-7	16-Mar-12	6	40.3	<0.047	<0.047	<0.047	<0.095	<0.24	<4.7	<10	<15
		14	20.5	<0.049	<0.049	<0.049	<0.098	<0.25	<4.9	<9.9	<15
SB-8	16-Mar-12	4	39.1	<0.050	<0.050	<0.050	0.20	0.20	<5.0	<10	<15
		14	17.3	<0.047	<0.047	<0.047	0.098	0.098	<4.7	<9.9	<15

TABLE 1

SUMMARY OF SOIL FIELD-SCREENING AND LABORATORY ANALYTICAL RESULTS

Enterprise Products Company Lateral K-31 Pipeline December 2011 Release

Rio Arriba County, New Mexico

Sample ID	Date Sampled	Depth (ft)	VOCs OVM (ppm)	Benzene (mg/kg)	Toluene (mg/kg)	Ethyl-benzene (mg/kg)	Xylene (mg/kg)	BTEX (mg/kg)	GRO (C6-C10) (mg/kg)	DRO (C10-C22) (mg/kg)	TPH (mg/kg)
	NMOCD Action Level		100	10	NE	NE	NE	50	NE	NE	100
SB-9	16-Mar-12	10	3,519	0.51	9.4	1.9	19	31	190	250	440
		14	128	29	480	64	580	1,150	6,700	2,000	8,700
SB-10	16-Mar-12	4	211	<0.047	<0.047	<0.047	0.20	0.20	5.8	32	38
		14	19.1	<0.048	<0.048	<0.048	<0.095	<0.24	<4.8	<9.9	<15
SB-11	16-Mar-12	10	3,210	0.67	14	10	83	108	1,100	240	1,340
		14	23.7	<0.048	<0.048	<0.048	<0.095	<0.24	7.0	<10	7.0
SB-12	16-Mar-12	4	10.9	<0.048	<0.048	<0.048	<0.097	<0.24	<4.8	<10	<15
		14	10.2	0.070	<0.048	<0.048	<0.096	0.070	<4.8	<10	<15

NOTES

NE = Not Established

NA = Not Analyzed

TABLE 2
SUMMARY OF GROUNDWATER ANALYTICAL RESULTS
Enterprise Products Company Lateral K-31 Pipeline December 2011 Release
Rio Arriba County, New Mexico

Well ID	Date Sampled	Benzene (µg/L)	Toluene (µg/L)	Ethyl-Benzene (µg/L)	Total Xylenes (µg/L)
Analytical Method		8021	8021	8021	8021
WQCC Standard		10	750	750	620
SB-1W	15-Mar-12	28	<2.0	2.0	<4.0
SB-2W	15-Mar-12	46	5.9	<2.0	<4.0
SB-3W	15-Mar-12	1,100	300	<20	75
SB-4W	15-Mar-12	130	17	<5.0	<10
SB-5W	16-Mar-12	5.8	2.5	<2.0	<4.0
SB-6W	16-Mar-12	1.2	<1.0	<1.0	<2.0
SB-7W	16-Mar-12	37	<2.0	<2.0	<4.0
SB-8W	16-Mar-12	2.2	<2.0	<2.0	<4.0
SB-9W	16-Mar-12	430	670	70	400
SB-10W	16-Mar-12	7.9	9.1	<20	5.1
SB-11W	16-Mar-12	1,400	98	<20	140
SB-12W	15-Mar-12	13	7.0	<2.0	4.3

Notes: < - Analyte below laboratory detection limit
NA - Not Analyzed
NE - Not Established



Animas
Environmental
Services, LLC.
624 East Comanche St.
Farmington, NM 87401

SB-1

ENTERPRISE PRODUCTS COMPANY
LATERAL K-31 PIPELINE RELEASE
RIO ARRIBA COUNTY, NEW MEXICO
SE1/4, SW1/4, SECTION 16, T25N, R6W

Date Started : 3/15/12
Date Completed : 3/15/12
Hole Diameter : 2-inch
Drilling Method : Direct Push
Sampling Method : Split Spoon

Latitude : N36.39377
Longitude : W107.47505
Survey By : Google Earth
Logged By : T. Long

Depth in Feet	Surf. Elev. 0	USCS	GRAPHIC	DESCRIPTION	Blow Count	PID (ppm)
0	0	SC		Clayey Sand, Fine, Reddish Brown, Moist, Slight Odor.	31	
2	-2	SC		Clayey Sand, Fine, Dark Grey, Moist, Strong Odor, Staining.	201	
4	-4	SC		Sandy Clay, Black, Moist, Strong Odor, Staining.	64	
6	-6	SC			56	
8	-8	SC			48	
10	-10	SC		Sandy Clay, Dark Grey, Saturated, Strong Odor, Staining.	2,769	
12	-12	SC			25	
14	-14	SC		Sandy Clay, Black, Saturated, Strong Odor, Staining.	27	
16						



Animas
Environmental
Services, LLC.

624 East Comanche St.
Farmington, NM 87401

SB-2

ENTERPRISE PRODUCTS COMPANY
LATERAL K-31 PIPELINE RELEASE
RIO ARriba COUNTY, NEW MEXICO
SE1/4, SW1/4, SECTION 16, T25N, R6W

Date Started : 3/15/12
Date Completed : 3/15/12
Hole Diameter : 2-inch
Drilling Method : Direct Push
Sampling Method : Split Spoon

Latitude : N36.39386
Longitude : W107.47508
Survey By : Google Earth
Logged By : T. Long

Depth in Feet	Surf. Elev. 0	USCS	GRAPHIC	DESCRIPTION	Blow Count	PID (ppm)
0	0					
		SW		Sand, Fine, Light Brown, Moist, No Odor.		38.5
2	-2	SW		Sand, Fine, Grey, Moist, Strong Odor, Staining		
		CL		Clay		184
4	-4	SC		Sandy Clay, Brown, Moist, Light Staining, Slight Odor.		65
6	-6	SC		Sandy Clay, Brown, Moist, Staining, Stronger Odor.		81
8	-8					47
10	-10	SW		Sand, Fine		
		SC		Sandy Clay, Brown/Black, Moist/Wet, Strong Odor, Slight Staining		36
12	-12	SW		Sand, Fine, Brown, Wet, Strong Odor, Staining		1,683
14	-14	SP		Sand, Fine, Black, Wet, Strong Odor, Strong Staining		33
16						



SB-3

ENTERPRISE PRODUCTS COMPANY
LATERAL K-31 PIPELINE RELEASE
RIO ARriba COUNTY, NEW MEXICO
SE1/4, SW1/4, SECTION 16, T25N, R6W

Date Started : 3/15/12
Date Completed : 3/15/12
Hole Diameter : 2-inch
Drilling Method : Direct Push
Sampling Method : Split Spoon

Latitude : N36.39392
Longitude : W107.47510
Survey By : Google Earth
Logged By : T. Long

Depth in Feet	Surf. Elev. 0	USCS	GRAPHIC	DESCRIPTION	Blow Count	PID (ppm)
0	0	SW		Sand, Fine, Brown, Dry, Slight Odor, Staining		57
2	-2	SC		Sandy Clay, Grey/Black, Moist, Strong Odor, Heavy Staining		313
4	-4	SC		Sandy Clay, Brown, Moist, Slight Odor, Slight Staining		78
6	-6	SC		Sandy Clay, Brown, Moist, Slight Odor, Heavy Staining		85
8	-8	SC		Sandy Clay, Brown, Moist, Slight Odor, Heavy Staining		30
10	-10	SC		Sandy Clay, Brown, Moist, Slight Odor, Heavy Staining		35
12	-12	SW		Sand, Fine, Grey, Moist, Slight Odor, Heavy Staining		417
14	-14	SW		Sand, Fine, Grey, Wet, Slight Odor, Heavy Staining		39
16						



Animas
Environmental
Services, LLC.

624 East Comanche St.
Farmington, NM 87401

SB-4

ENTERPRISE PRODUCTS COMPANY
LATERAL K-31 PIPELINE RELEASE
RIO ARRIBA COUNTY, NEW MEXICO
SE1/4, SW1/4, SECTION 16, T25N, R6W

Date Started : 3/15/12
Date Completed : 3/15/12
Hole Diameter : 2-inch
Drilling Method : Direct Push
Sampling Method : Split Spoon

Latitude : N36.39398
Longitude : W107.47512
Survey By : Google Earth
Logged By : T. Long

Depth in Feet	Surf. Elev. 0	USCS	GRAPHIC	DESCRIPTION	Blow Count	PID (ppm)
0	0	SW		Sand, Fine, Brown, Moist, Slight Odor, Slight Staining		162
2	-2	SC		Sandy Clay, Brown, Moist, Slight Odor, Slight Staining		482
4	-4					119
6	-6					821
8	-8					23
10	-10					17
12	-12	SW		Sand, Fine, Grey, Wet, Strong Odor, Heavy Staining		10.1
14	-14					
16						



Animas
Environmental
Services, LLC.
624 East Comanche St.
Farmington, NM 87401

SB-5

ENTERPRISE PRODUCTS COMPANY
LATERAL K-31 PIPELINE RELEASE
RIO ARRIBA COUNTY, NEW MEXICO
SE1/4, SW1/4, SECTION 16, T25N, R6W

Date Started : 3/16/12
Date Completed : 3/16/12
Hole Diameter : 2-inch
Drilling Method : Direct Push
Sampling Method : Split Spoon

Latitude : N36.39381
Longitude : W107.47497
Survey By : Google Earth
Logged By : T. Long

Depth in Feet	Surf. Elev. 0	USCS	GRAPHIC	DESCRIPTION	Blow Count	PID (ppm)
0	0	SW		Sand, Fine, Black, Moist, Strong Odor, Heavy Staining	89	
2	-2	SC		Sandy Clay, Black, Moist, Slight Odor, Heavy Staining	70.5	
4	-4	SC			48	
6	-6	SC			47.3	
8	-8	SC		Sandy Clay, Black, Moist, Slight Odor, Heavy Staining	28.9	
10	-10	SC			20.2	
12	-12	SC		Sandy Clay, Black, Wet, Slight Odor, Heavy Staining	5.6	
14	-14	SW		Sand, Fine, Brown/Grey, Wet, No odor.	10.4	
16						



Animas
Environmental
Services, LLC.
624 East Comanche St.
Farmington, NM 87401

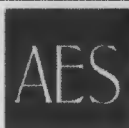
SB-6

ENTERPRISE PRODUCTS COMPANY
LATERAL K-31 PIPELINE RELEASE
RIO ARriba COUNTY, NEW MEXICO
SE1/4, SW1/4, SECTION 16, T25N, R6W

Date Started : 3/16/12
Date Completed : 3/16/12
Hole Diameter : 2-inch
Drilling Method : Direct Push
Sampling Method : Split Spoon

Latitude : N36.39385
Longitude : W107.47484
Survey By : Google Earth
Logged By : T. Long

Depth in Feet	Surf. Elev. 0	USCS	GRAPHIC	DESCRIPTION	Blow Count	PID (ppm)
0	0			Sand, Fine, Light Brown, Dry, No Odor, No Staining		
		SW				48.9
2	-2			Sandy Clay, Black, Moist, Slight Odor, Slight Staining		
		SC				38.1
4	-4			Sandy Clay, Brown, Moist, Slight Odor, Slight Staining		
		SC				21.4
6	-6			Clayey Sand, Fine, Brown, Slight Odor, Slight Staining		
		SC				18.6
8	-8			Sandy Clay, Grey/Brown, Moist, Slight Odor, Slight Staining		
		SC				15.3
10	-10					17.7
		SW		Sand, Fine, Grey, Wet		
12	-12			Sandy Clay, Black, Wet, Strong Odor, Heavy Staining		
		SC				14.8
14	-14			Sand, Fine, Brown, Wet, No Odor, No Staining		
		SW				17.3
16						



Animas
Environmental
Services, LLC.
624 East Comanche St.
Farmington, NM 87401

SB-7

ENTERPRISE PRODUCTS COMPANY
LATERAL K-31 PIPELINE RELEASE
RIO ARriba COUNTY, NEW MEXICO
SE1/4, SW1/4, SECTION 16, T25N, R6W

Date Started : 3/16/12
Date Completed : 3/16/12
Hole Diameter : 2-inch
Drilling Method : Direct Push
Sampling Method : Split Spoon

Latitude : N36.39399
Longitude : W107.47489
Survey By : Google Earth
Logged By : T. Long

Depth in Feet	Surf. Elev. 0	USCS	GRAPHIC	DESCRIPTION	Blow Count	PID (ppm)
0	0	SW		Sand, Fine, Brown, No Odor, No Staining	8.9	
2	-2	SC		Sandy Clay, Brown, Moist, Slight Odor, Slight Staining	32.7	
4	-4				40.3	
6	-6				19.7	
8	-8				11.2	
10	-10	SC		Clayey Sand, Fine, Grey/Black, Moist, Slight Odor, Heavy Staining	16.1	
12	-12				12.7	
14	-14	SC		Clayey Sand, Fine, Grey/Black, Wet, Slight Odor, Heavy Staining	20.5	
16						



SB-8

ENTERPRISE PRODUCTS COMPANY
LATERAL K-31 PIPELINE RELEASE
RIO ARriba COUNTY, NEW MEXICO
SE1/4, SW1/4, SECTION 16, T25N, R6W

Date Started : 3/16/12
Date Completed : 3/16/12
Hole Diameter : 2-inch
Drilling Method : Direct Push
Sampling Method : Split Spoon

Latitude : N36.39373
Longitude : W107.47479
Survey By : Google Earth
Logged By : T. Long

Depth in Feet	Surf. Elev. 0	USCS	GRAPHIC	DESCRIPTION	Blow Count	PID (ppm)
0	0					
2	-2	SW		Sand, Fine, Brown, Dry, No Odor, No Staining		2.5
4	-4			No Recovery		
6	-6	SC		Sandy Clay, Brown, Moist, No Odor, No Staining		39.1
8	-8					
10	-10	SC		Sandy Clay, Black, Moist, Slight Odor, Heavy Staining		32.3
12	-12	SC		Clayey Sand, Fine, Black, Moist, Slight Odor, Heavy Staining		31.9
14	-14	SW		Sand, Fine, Brown, Wet, No Odor, No Staining		19.4
16						17.3



Animas
Environmental
Services, LLC.

624 East Comanche St.
Farmington, NM 87401

SB-9

ENTERPRISE PRODUCTS COMPANY
LATERAL K-31 PIPELINE RELEASE
RIO ARriba COUNTY, NEW MEXICO
SE1/4, SW1/4, SECTION 16, T25N, R6W

Date Started : 3/16/12
Date Completed : 3/16/12
Hole Diameter : 2-inch
Drilling Method : Direct Push
Sampling Method : Split Spoon

Latitude : N36.39370
Longitude : W107.47502
Survey By : Google Earth
Logged By : T. Long

Depth in Feet	Surf. Elev. 0	USCS	GRAPHIC	DESCRIPTION	Blow Count	PID (ppm)
0	0	SW		Sand, Fine, Brown, Dry, No Odor, No Staining	2,679	
2	-2	SC		Sandy Clay, Grey, Moist, Slight Odor, Slight Staining	2,310	
4	-4	SC			3,061	
6	-6	SC			1,508	
8	-8	SC		Sandy Clay, Brown, Moist, Slight Odor, Slight Staining	3,519	
10	-10			No Recovery	1,478	
12	-12	SC		Clayey Sand, Fine, Black, Slight Odor, Heavy Staining	798	
14	-14	SC			128	
16						



Animas
Environmental
Services, LLC.

624 East Comanche St.
Farmington, NM 87401

SB-10

ENTERPRISE PRODUCTS COMPANY
LATERAL K-31 PIPELINE RELEASE
RIO ARriba COUNTY, NEW MEXICO
SE1/4, SW1/4, SECTION 16, T25N, R6W

Date Started : 3/16/12
Date Completed : 3/16/12
Hole Diameter : 2-inch
Drilling Method : Direct Push
Sampling Method : Split Spoon

Latitude : N36.39359
Longitude : W107.47495
Survey By : Google Earth
Logged By : T. Long

Depth in Feet	Surf. Elev. 0	USCS	GRAPHIC	DESCRIPTION	Blow Count	PID (ppm)
0	0	SW		Sand, Fine, Brown, Dry, No Odor, No Staining		202
2	-2	SW		Sand, Fine, Brown, Dry, No Odor, Grey Staining		211
4	-4	SC		Sandy Clay, Black, Moist, Slight Odor, Heavy Staining		29.2
6	-6	SC				38.2
8	-8	SC				47
10	-10	SC				48.6
12	-12	SC		Sandy Clay, Brown, Wet, Slight Odor, Heavy Black Staining		25.9
14	-14	SW		Sand, Fine, Brown, Wet, No Odor		19.1
16						



Animas
Environmental
Services, LLC.

624 East Comanche St.
Farmington, NM 87401

SB-11

ENTERPRISE PRODUCTS COMPANY
LATERAL K-31 PIPELINE RELEASE
RIO ARriba COUNTY, NEW MEXICO
SE1/4, SW1/4, SECTION 16, T25N, R6W

Date Started : 3/16/12
Date Completed : 3/16/12
Hole Diameter : 2-inch
Drilling Method : Direct Push
Sampling Method : Split Spoon

Latitude : N36.39375
Longitude : W107.47514
Survey By : Google Earth
Logged By : T. Long

Depth in Feet	Surf. Elev. 0	USCS	GRAPHIC	DESCRIPTION	Blow Count	PID (ppm)
0	0	SP		Sand, Fine, Brown, Dry, No Odor, No Staining	7.4	
2	-2	SW		Sand, Fine, Brown, Dry, Slight Odor, Slight Grey Staining	213	
4	-4	SC		Sandy Clay, Brown, Moist, Slight Odor, Heavy Staining	56.8	
6	-6				33.2	
8	-8					
10	-10					
12	-12	SP		Sand, Fine, Odor, Heavy Staining	3,210	
14	-14	SC		Clayey Sand, Grey/Black, Wet, Slight Odor, Heavy Staining	110.3	
16					23.7	



Animas
Environmental
Services, LLC.

624 East Comanche St.
Farmington, NM 87401

SB-12

ENTERPRISE PRODUCTS COMPANY
LATERAL K-31 PIPELINE RELEASE
RIO ARRIBA COUNTY, NEW MEXICO
SE1/4, SW1/4, SECTION 16, T25N, R6W

Date Started : 3/16/12
Date Completed : 3/16/12
Hole Diameter : 2-inch
Drilling Method : Direct Push
Sampling Method : Split Spoon

Latitude : N36.39407
Longitude : W107.47517
Survey By : Google Earth
Logged By : T. Long

Depth in Feet	Surf. Elev. 0	USCS	GRAPHIC	DESCRIPTION	Blow Count	PID (ppm)
0	0	SW		Sand, Fine, Brown, Dry, No Odor, No Staining	6.5	
2	-2					
4	-4					
6	-6	SC		Sandy Clay, Brown, Moist, Slight Odor, Slight Staining	10.9	
8	-8					
10	-10					
12	-12	SC		Sandy Clay, Brown, Wet, Slight Odor, Slight Staining	28.9	
14	-14					
16	-16	SW		Sand, Fine, Brown, Wet	9.5	
					8.1	
					10.2	



*Hall Environmental Analysis Laboratory
4901 Hawkins NE
Albuquerque, NM 87109
TEL: 505-345-3975 FAX: 505-345-4107
Website: www.hallenvironmental.com*

March 28, 2012

Ross Kennemer

Animas Environmental Services
624 East Comanche
Farmington, NM 87401
TEL: (505) 564-2281
FAX (505) 324-2022

RE: Enterprise K-31

OrderNo.: 1203644

Dear Ross Kennemer:

Hall Environmental Analysis Laboratory received 36 sample(s) on 3/17/2012 for the analyses presented in the following report.

These were analyzed according to EPA procedures or equivalent. To access our accredited tests please go to www.hallenvironmental.com or the state specific web sites. See the sample checklist and/or the Chain of Custody for information regarding the sample receipt temperature and preservation. Data qualifiers or a narrative will be provided if the sample analysis or analytical quality control parameters require a flag. All samples are reported as received unless otherwise indicated.

Please don't hesitate to contact HEAL for any additional information or clarifications.

Sincerely,

Andy Freeman
Laboratory Manager
4901 Hawkins NE
Albuquerque, NM 87109

Hall Environmental Analysis Laboratory, Inc.

Analytical Report

Lab Order 1203644

Date Reported: 3/28/2012

CLIENT: Animas Environmental Services

Client Sample ID: SB-1 @ 10'

Project: Enterprise K-31

Collection Date: 3/15/2012 1:45:00 PM

Lab ID: 1203644-001

Matrix: SOIL

Received Date: 3/17/2012 10:30:00 AM

Analyses	Result	RL	Qual	Units	DF	Date Analyzed
EPA METHOD 8015B: DIESEL RANGE ORGANICS						Analyst: JMP
Diesel Range Organics (DRO)	89	9.6		mg/Kg	1	3/20/2012 4:22:22 PM
Surr: DNOP	87.5	77.4-131		%REC	1	3/20/2012 4:22:22 PM
EPA METHOD 8015B: GASOLINE RANGE						Analyst: NSB
Gasoline Range Organics (GRO)	190	49		mg/Kg	10	3/23/2012 3:01:56 PM
Surr: BFB	185	69.7-121	S	%REC	10	3/23/2012 3:01:56 PM
EPA METHOD 8021B: VOLATILES						Analyst: NSB
Benzene	ND	0.49		mg/Kg	10	3/22/2012 1:59:33 PM
Toluene	ND	0.49		mg/Kg	10	3/22/2012 1:59:33 PM
Ethylbenzene	0.73	0.49		mg/Kg	10	3/22/2012 1:59:33 PM
Xylenes, Total	4.9	0.97		mg/Kg	10	3/22/2012 1:59:33 PM
Surr: 4-Bromofluorobenzene	102	80-120		%REC	10	3/22/2012 1:59:33 PM

Qualifiers: */X Value exceeds Maximum Contaminant Level.
E Value above quantitation range
J Analyte detected below quantitation limits
R RPD outside accepted recovery limits
S Spike Recovery outside accepted recovery limits

B Analyte detected in the associated Method Blank
H Holding times for preparation or analysis exceeded
ND Not Detected at the Reporting Limit
RL Reporting Detection Limit

Hall Environmental Analysis Laboratory, Inc.

Analytical Report

Lab Order 1203644

Date Reported: 3/28/2012

CLIENT: Animas Environmental Services

Client Sample ID: SB-1 @ 14'

Project: Enterprise K-31

Collection Date: 3/15/2012 1:48:00 PM

Lab ID: 1203644-002

Matrix: SOIL

Received Date: 3/17/2012 10:30:00 AM

Analyses	Result	RL	Qual	Units	DF	Date Analyzed
EPA METHOD 8015B: DIESEL RANGE ORGANICS						Analyst: JMP
Diesel Range Organics (DRO)	ND	9.7		mg/Kg	1	3/20/2012 4:43:58 PM
Surr: DNOP	80.6	77.4-131		%REC	1	3/20/2012 4:43:58 PM
EPA METHOD 8015B: GASOLINE RANGE						Analyst: NSB
Gasoline Range Organics (GRO)	ND	4.6		mg/Kg	1	3/21/2012 2:14:29 AM
Surr: BFB	94.0	69.7-121		%REC	1	3/21/2012 2:14:29 AM
EPA METHOD 8021B: VOLATILES						Analyst: NSB
Benzene	ND	0.046		mg/Kg	1	3/21/2012 2:14:29 AM
Toluene	ND	0.046		mg/Kg	1	3/21/2012 2:14:29 AM
Ethylbenzene	ND	0.046		mg/Kg	1	3/21/2012 2:14:29 AM
Xylenes, Total	ND	0.092		mg/Kg	1	3/21/2012 2:14:29 AM
Surr: 4-Bromofluorobenzene	97.0	80-120		%REC	1	3/21/2012 2:14:29 AM

Qualifiers: */X Value exceeds Maximum Contaminant Level.
E Value above quantitation range
J Analyte detected below quantitation limits
R RPD outside accepted recovery limits
S Spike Recovery outside accepted recovery limits

B Analyte detected in the associated Method Blank
H Holding times for preparation or analysis exceeded
ND Not Detected at the Reporting Limit
RL Reporting Detection Limit

Hall Environmental Analysis Laboratory, Inc.

Analytical Report

Lab Order 1203644

Date Reported: 3/28/2012

CLIENT: Animas Environmental Services

Client Sample ID: SB-2 @ 2-4'

Project: Enterprise K-31

Collection Date: 3/15/2012 2:25:00 PM

Lab ID: 1203644-003

Matrix: SOIL

Received Date: 3/17/2012 10:30:00 AM

Analyses	Result	RL	Qual	Units	DF	Date Analyzed
EPA METHOD 8015B: DIESEL RANGE ORGANICS						Analyst: JMP
Diesel Range Organics (DRO)	ND	10		mg/Kg	1	3/20/2012 5:05:26 PM
Surr: DNOP	83.0	77.4-131		%REC	1	3/20/2012 5:05:26 PM
EPA METHOD 8015B: GASOLINE RANGE						Analyst: NSB
Gasoline Range Organics (GRO)	5.3	4.9		mg/Kg	1	3/21/2012 2:43:12 AM
Surr: BFB	102	69.7-121		%REC	1	3/21/2012 2:43:12 AM
EPA METHOD 8021B: VOLATILES						Analyst: NSB
Benzene	0.070	0.049		mg/Kg	1	3/21/2012 2:43:12 AM
Toluene	0.10	0.049		mg/Kg	1	3/21/2012 2:43:12 AM
Ethylbenzene	0.054	0.049		mg/Kg	1	3/21/2012 2:43:12 AM
Xylenes, Total	0.49	0.099		mg/Kg	1	3/21/2012 2:43:12 AM
Surr: 4-Bromofluorobenzene	98.8	80-120		%REC	1	3/21/2012 2:43:12 AM

Qualifiers: */X Value exceeds Maximum Contaminant Level.
E Value above quantitation range
J Analyte detected below quantitation limits
R RPD outside accepted recovery limits
S Spike Recovery outside accepted recovery limits

B Analyte detected in the associated Method Blank
H Holding times for preparation or analysis exceeded
ND Not Detected at the Reporting Limit
RL Reporting Detection Limit

Hall Environmental Analysis Laboratory, Inc.

Analytical Report

Lab Order **1203644**

Date Reported: **3/28/2012**

CLIENT: Animas Environmental Services

Client Sample ID: SB-2 @ 12'

Project: Enterprise K-31

Collection Date: 3/15/2012 2:34:00 PM

Lab ID: 1203644-004

Matrix: SOIL

Received Date: 3/17/2012 10:30:00 AM

Analyses	Result	RL	Qual	Units	DF	Date Analyzed
EPA METHOD 8015B: DIESEL RANGE ORGANICS						Analyst: JMP
Diesel Range Organics (DRO)	ND	10		mg/Kg	1	3/20/2012 5:48:10 PM
Surr: DNOP	83.0	77.4-131		%REC	1	3/20/2012 5:48:10 PM
EPA METHOD 8015B: GASOLINE RANGE						Analyst: NSB
Gasoline Range Organics (GRO)	ND	4.9		mg/Kg	1	3/23/2012 3:30:43 PM
Surr: BFB	115	69.7-121		%REC	1	3/23/2012 3:30:43 PM
EPA METHOD 8021B: VOLATILES						Analyst: NSB
Benzene	ND	0.049		mg/Kg	1	3/22/2012 2:57:13 PM
Toluene	ND	0.049		mg/Kg	1	3/22/2012 2:57:13 PM
Ethylbenzene	ND	0.049		mg/Kg	1	3/22/2012 2:57:13 PM
Xylenes, Total	ND	0.098		mg/Kg	1	3/22/2012 2:57:13 PM
Surr: 4-Bromofluorobenzene	94.3	80-120		%REC	1	3/22/2012 2:57:13 PM

Qualifiers: * / X Value exceeds Maximum Contaminant Level.
E Value above quantitation range
J Analyte detected below quantitation limits
R RPD outside accepted recovery limits
S Spike Recovery outside accepted recovery limits

B Analyte detected in the associated Method Blank
H Holding times for preparation or analysis exceeded
ND Not Detected at the Reporting Limit
RL Reporting Detection Limit

Hall Environmental Analysis Laboratory, Inc.

Analytical Report

Lab Order 1203644

Date Reported: 3/28/2012

CLIENT: Animas Environmental Services

Client Sample ID: SB-3 @ 12'

Project: Enterprise K-31

Collection Date: 3/15/2012 3:12:00 PM

Lab ID: 1203644-005

Matrix: SOIL

Received Date: 3/17/2012 10:30:00 AM

Analyses	Result	RL	Qual	Units	DF	Date Analyzed
EPA METHOD 8015B: DIESEL RANGE ORGANICS						Analyst: JMP
Diesel Range Organics (DRO)	ND	10		mg/Kg	1	3/20/2012 6:09:37 PM
Surr: DNOP	80.5	77.4-131		%REC	1	3/20/2012 6:09:37 PM
EPA METHOD 8015B: GASOLINE RANGE						Analyst: NSB
Gasoline Range Organics (GRO)	ND	4.9		mg/Kg	1	3/23/2012 3:59:36 PM
Surr: BFB	101	69.7-121		%REC	1	3/23/2012 3:59:36 PM
EPA METHOD 8021B: VOLATILES						Analyst: NSB
Benzene	ND	0.049		mg/Kg	1	3/22/2012 3:26:01 PM
Toluene	ND	0.049		mg/Kg	1	3/22/2012 3:26:01 PM
Ethylbenzene	ND	0.049		mg/Kg	1	3/22/2012 3:26:01 PM
Xylenes, Total	ND	0.099		mg/Kg	1	3/22/2012 3:26:01 PM
Surr: 4-Bromofluorobenzene	95.1	80-120		%REC	1	3/22/2012 3:26:01 PM

Qualifiers:	* / X	Value exceeds Maximum Contaminant Level.	B	Analyte detected in the associated Method Blank
	E	Value above quantitation range	H	Holding times for preparation or analysis exceeded
	J	Analyte detected below quantitation limits	ND	Not Detected at the Reporting Limit
	R	RPD outside accepted recovery limits	RL	Reporting Detection Limit
	S	Spike Recovery outside accepted recovery limits		

Analytical ReportLab Order **1203644**Date Reported: **3/28/2012****Hall Environmental Analysis Laboratory, Inc.****CLIENT:** Animas Environmental Services**Client Sample ID:** SB-3 @ 14'**Project:** Enterprise K-31**Collection Date:** 3/15/2012 3:14:00 PM**Lab ID:** 1203644-006**Matrix:** SOIL**Received Date:** 3/17/2012 10:30:00 AM

Analyses	Result	RL	Qual	Units	DF	Date Analyzed
EPA METHOD 8015B: DIESEL RANGE ORGANICS						Analyst: JMP
Diesel Range Organics (DRO)	ND	10		mg/Kg	1	3/21/2012 7:21:49 AM
Surr: DNOP	78.8	77.4-131		%REC	1	3/21/2012 7:21:49 AM
EPA METHOD 8015B: GASOLINE RANGE						Analyst: NSB
Gasoline Range Organics (GRO)	ND	4.8		mg/Kg	1	3/23/2012 4:28:26 PM
Surr: BFB	95.9	69.7-121		%REC	1	3/23/2012 4:28:26 PM
EPA METHOD 8021B: VOLATILES						Analyst: NSB
Benzene	ND	0.048		mg/Kg	1	3/22/2012 3:54:47 PM
Toluene	ND	0.048		mg/Kg	1	3/22/2012 3:54:47 PM
Ethylbenzene	ND	0.048		mg/Kg	1	3/22/2012 3:54:47 PM
Xylenes, Total	ND	0.096		mg/Kg	1	3/22/2012 3:54:47 PM
Surr: 4-Bromofluorobenzene	94.4	80-120		%REC	1	3/22/2012 3:54:47 PM

Qualifiers: */X Value exceeds Maximum Contaminant Level.
 E Value above quantitation range
 J Analyte detected below quantitation limits
 R RPD outside accepted recovery limits
 S Spike Recovery outside accepted recovery limits

 B Analyte detected in the associated Method Blank
 H Holding times for preparation or analysis exceeded
 ND Not Detected at the Reporting Limit
 RL Reporting Detection Limit

Hall Environmental Analysis Laboratory, Inc.

Analytical Report

Lab Order 1203644

Date Reported: 3/28/2012

CLIENT: Animas Environmental Services

Client Sample ID: SB-4 @ 4'

Project: Enterprise K-31

Collection Date: 3/15/2012 3:46:00 PM

Lab ID: 1203644-007

Matrix: SOIL

Received Date: 3/17/2012 10:30:00 AM

Analyses	Result	RL	Qual	Units	DF	Date Analyzed
EPA METHOD 8015B: DIESEL RANGE ORGANICS						Analyst: JMP
Diesel Range Organics (DRO)	20	9.7		mg/Kg	1	3/21/2012 8:26:54 AM
Surr: DNOP	86.9	77.4-131		%REC	1	3/21/2012 8:26:54 AM
EPA METHOD 8015B: GASOLINE RANGE						Analyst: NSB
Gasoline Range Organics (GRO)	10	5.0		mg/Kg	1	3/21/2012 4:38:18 AM
Surr: BFB	116	69.7-121		%REC	1	3/21/2012 4:38:18 AM
EPA METHOD 8021B: VOLATILES						Analyst: NSB
Benzene	0.11	0.050		mg/Kg	1	3/21/2012 4:38:18 AM
Toluene	0.55	0.050		mg/Kg	1	3/21/2012 4:38:18 AM
Ethylbenzene	0.16	0.050		mg/Kg	1	3/21/2012 4:38:18 AM
Xylenes, Total	1.6	0.10		mg/Kg	1	3/21/2012 4:38:18 AM
Surr: 4-Bromofluorobenzene	99.9	80-120		%REC	1	3/21/2012 4:38:18 AM

Qualifiers: */X Value exceeds Maximum Contaminant Level.
E Value above quantitation range
J Analyte detected below quantitation limits
R RPD outside accepted recovery limits
S Spike Recovery outside accepted recovery limits

B Analyte detected in the associated Method Blank
H Holding times for preparation or analysis exceeded
ND Not Detected at the Reporting Limit
RL Reporting Detection Limit

Analytical ReportLab Order **1203644**Date Reported: **3/28/2012****Hall Environmental Analysis Laboratory, Inc.****CLIENT:** Animas Environmental Services**Client Sample ID:** SB-4 @ 14'**Project:** Enterprise K-31**Collection Date:** 3/15/2012 3:47:00 PM**Lab ID:** 1203644-008**Matrix:** SOIL**Received Date:** 3/17/2012 10:30:00 AM

Analyses	Result	RL	Qual	Units	DF	Date Analyzed
EPA METHOD 8015B: DIESEL RANGE ORGANICS						Analyst: JMP
Diesel Range Organics (DRO)	ND	9.8		mg/Kg	1	3/21/2012 8:48:31 AM
Surr: DNOP	84.2	77.4-131		%REC	1	3/21/2012 8:48:31 AM
EPA METHOD 8015B: GASOLINE RANGE						Analyst: NSB
Gasoline Range Organics (GRO)	ND	4.8		mg/Kg	1	3/23/2012 4:57:12 PM
Surr: BFB	96.0	69.7-121		%REC	1	3/23/2012 4:57:12 PM
EPA METHOD 8021B: VOLATILES						Analyst: NSB
Benzene	ND	0.048		mg/Kg	1	3/22/2012 4:23:35 PM
Toluene	ND	0.048		mg/Kg	1	3/22/2012 4:23:35 PM
Ethylbenzene	ND	0.048		mg/Kg	1	3/22/2012 4:23:35 PM
Xylenes, Total	ND	0.097		mg/Kg	1	3/22/2012 4:23:35 PM
Surr: 4-Bromofluorobenzene	94.6	80-120		%REC	1	3/22/2012 4:23:35 PM

Qualifiers: */X Value exceeds Maximum Contaminant Level.
 E Value above quantitation range
 J Analyte detected below quantitation limits
 R RPD outside accepted recovery limits
 S Spike Recovery outside accepted recovery limits

 B Analyte detected in the associated Method Blank
 H Holding times for preparation or analysis exceeded
 ND Not Detected at the Reporting Limit
 RL Reporting Detection Limit

Analytical ReportLab Order **1203644**Date Reported: **3/28/2012****Hall Environmental Analysis Laboratory, Inc.****CLIENT:** Animas Environmental Services**Client Sample ID:** SB-1**Project:** Enterprise K-31**Collection Date:** 3/15/2012 2:00:00 PM**Lab ID:** 1203644-009**Matrix:** AQUEOUS**Received Date:** 3/17/2012 10:30:00 AM

Analyses	Result	RL	Qual	Units	DF	Date Analyzed
EPA METHOD 8021B: VOLATILES						Analyst: NSB
Benzene	28	2.0		µg/L	2	3/23/2012 2:14:08 PM
Toluene	ND	2.0		µg/L	2	3/23/2012 2:14:08 PM
Ethylbenzene	2.0	2.0		µg/L	2	3/23/2012 2:14:08 PM
Xylenes, Total	ND	4.0		µg/L	2	3/23/2012 2:14:08 PM
Surr: 4-Bromofluorobenzene	88.2	55-140		%REC	2	3/23/2012 2:14:08 PM

Qualifiers:

* / X	Value exceeds Maximum Contaminant Level.
E	Value above quantitation range
J	Analyte detected below quantitation limits
R	RPD outside accepted recovery limits
S	Spike Recovery outside accepted recovery limits

B	Analyte detected in the associated Method Blank
H	Holding times for preparation or analysis exceeded
ND	Not Detected at the Reporting Limit
RL	Reporting Detection Limit

Hall Environmental Analysis Laboratory, Inc.

Analytical Report

Lab Order 1203644

Date Reported: 3/28/2012

CLIENT: Animas Environmental Services

Client Sample ID: SB-2

Project: Enterprise K-31

Collection Date: 3/15/2012 2:42:00 PM

Lab ID: 1203644-010

Matrix: AQUEOUS

Received Date: 3/17/2012 10:30:00 AM

Analyses	Result	RL	Qual	Units	DF	Date Analyzed
EPA METHOD 8021B: VOLATILES						Analyst: NSB
Benzene	46	2.0		µg/L	2	3/22/2012 3:45:51 PM
Toluene	5.9	2.0		µg/L	2	3/22/2012 3:45:51 PM
Ethylbenzene	ND	2.0		µg/L	2	3/22/2012 3:45:51 PM
Xylenes, Total	ND	4.0		µg/L	2	3/22/2012 3:45:51 PM
Surr: 4-Bromofluorobenzene	79.6	55-140		%REC	2	3/22/2012 3:45:51 PM

Qualifiers:

- *X Value exceeds Maximum Contaminant Level.
- E Value above quantitation range
- J Analyte detected below quantitation limits
- R RPD outside accepted recovery limits
- S Spike Recovery outside accepted recovery limits

- B Analyte detected in the associated Method Blank
- H Holding times for preparation or analysis exceeded
- ND Not Detected at the Reporting Limit
- RL Reporting Detection Limit

Analytical ReportLab Order **1203644**Date Reported: **3/28/2012****Hall Environmental Analysis Laboratory, Inc.****CLIENT:** Animas Environmental Services**Client Sample ID:** SB-3**Project:** Enterprise K-31**Collection Date:** 3/15/2012 3:25:00 PM**Lab ID:** 1203644-011**Matrix:** AQUEOUS**Received Date:** 3/17/2012 10:30:00 AM

Analyses	Result	RL	Qual	Units	DF	Date Analyzed
EPA METHOD 8021B: VOLATILES						Analyst: NSB
Benzene	1,100	20		µg/L	20	3/23/2012 4:15:20 PM
Toluene	300	20		µg/L	20	3/23/2012 4:15:20 PM
Ethylbenzene	ND	20		µg/L	20	3/23/2012 4:15:20 PM
Xylenes, Total	75	40		µg/L	20	3/23/2012 4:15:20 PM
Surr: 4-Bromofluorobenzene	94.5	55-140		%REC	20	3/23/2012 4:15:20 PM

Qualifiers:	* / X	Value exceeds Maximum Contaminant Level.	B	Analyte detected in the associated Method Blank
	E	Value above quantitation range	H	Holding times for preparation or analysis exceeded
	J	Analyte detected below quantitation limits	ND	Not Detected at the Reporting Limit
	R	RPD outside accepted recovery limits	RL	Reporting Detection Limit
	S	Spike Recovery outside accepted recovery limits		

Analytical ReportLab Order **1203644**Date Reported: **3/28/2012****Hall Environmental Analysis Laboratory, Inc.****CLIENT:** Animas Environmental Services**Client Sample ID:** SB-4**Project:** Enterprise K-31**Collection Date:** 3/15/2012 4:00:00 PM**Lab ID:** 1203644-012**Matrix:** AQUEOUS**Received Date:** 3/17/2012 10:30:00 AM

Analyses	Result	RL	Qual	Units	DF	Date Analyzed
EPA METHOD 8021B: VOLATILES						Analyst: NSB
Benzene	130	5.0		µg/L	5	3/23/2012 4:45:24 PM
Toluene	17	5.0		µg/L	5	3/23/2012 4:45:24 PM
Ethylbenzene	ND	5.0		µg/L	5	3/23/2012 4:45:24 PM
Xylenes, Total	ND	10		µg/L	5	3/23/2012 4:45:24 PM
Surr: 4-Bromofluorobenzene	77.4	55-140		%REC	5	3/23/2012 4:45:24 PM

Qualifiers: */X Value exceeds Maximum Contaminant Level.
 E Value above quantitation range
 J Analyte detected below quantitation limits
 R RPD outside accepted recovery limits
 S Spike Recovery outside accepted recovery limits

B Analyte detected in the associated Method Blank
H Holding times for preparation or analysis exceeded
ND Not Detected at the Reporting Limit
RL Reporting Detection Limit

Hall Environmental Analysis Laboratory, Inc.

Analytical Report

Lab Order 1203644

Date Reported: 3/28/2012

CLIENT: Animas Environmental Services

Client Sample ID: SB-5 @ 4'

Project: Enterprise K-31

Collection Date: 3/16/2012 8:59:00 AM

Lab ID: 1203644-013

Matrix: SOIL

Received Date: 3/17/2012 10:30:00 AM

Analyses	Result	RL	Qual	Units	DF	Date Analyzed
EPA METHOD 8015B: DIESEL RANGE ORGANICS						Analyst: JMP
Diesel Range Organics (DRO)	ND	9.7		mg/Kg	1	3/21/2012 9:10:21 AM
Surr: DNOP	81.9	77.4-131		%REC	1	3/21/2012 9:10:21 AM
EPA METHOD 8015B: GASOLINE RANGE						Analyst: NSB
Gasoline Range Organics (GRO)	ND	4.8		mg/Kg	1	3/23/2012 10:42:01 PM
Surr: BFB	98.3	69.7-121		%REC	1	3/23/2012 10:42:01 PM
EPA METHOD 8021B: VOLATILES						Analyst: NSB
Benzene	ND	0.048		mg/Kg	1	3/22/2012 4:52:18 PM
Toluene	ND	0.048		mg/Kg	1	3/22/2012 4:52:18 PM
Ethylbenzene	ND	0.048		mg/Kg	1	3/22/2012 4:52:18 PM
Xylenes, Total	0.24	0.096		mg/Kg	1	3/22/2012 4:52:18 PM
Surr: 4-Bromofluorobenzene	95.2	80-120		%REC	1	3/22/2012 4:52:18 PM

Qualifiers:

- * / X Value exceeds Maximum Contaminant Level.
- E Value above quantitation range
- J Analyte detected below quantitation limits
- R RPD outside accepted recovery limits
- S Spike Recovery outside accepted recovery limits

- B Analyte detected in the associated Method Blank
- H Holding times for preparation or analysis exceeded
- ND Not Detected at the Reporting Limit
- RL Reporting Detection Limit

Hall Environmental Analysis Laboratory, Inc.

Analytical Report

Lab Order 1203644

Date Reported: 3/28/2012

CLIENT: Animas Environmental Services

Client Sample ID: SB-5 @ 14'

Project: Enterprise K-31

Collection Date: 3/16/2012 9:06:00 AM

Lab ID: 1203644-014

Matrix: SOIL

Received Date: 3/17/2012 10:30:00 AM

Analyses	Result	RL	Qual	Units	DF	Date Analyzed
EPA METHOD 8015B: DIESEL RANGE ORGANICS						Analyst: JMP
Diesel Range Organics (DRO)	ND	9.6		mg/Kg	1	3/21/2012 9:32:02 AM
Surr: DNOP	82.1	77.4-131		%REC	1	3/21/2012 9:32:02 AM
EPA METHOD 8015B: GASOLINE RANGE						Analyst: NSB
Gasoline Range Organics (GRO)	ND	4.8		mg/Kg	1	3/23/2012 11:10:50 PM
Surr: BFB	95.2	69.7-121		%REC	1	3/23/2012 11:10:50 PM
EPA METHOD 8021B: VOLATILES						Analyst: NSB
Benzene	ND	0.048		mg/Kg	1	3/22/2012 5:20:59 PM
Toluene	ND	0.048		mg/Kg	1	3/22/2012 5:20:59 PM
Ethylbenzene	ND	0.048		mg/Kg	1	3/22/2012 5:20:59 PM
Xylenes, Total	ND	0.095		mg/Kg	1	3/22/2012 5:20:59 PM
Surr: 4-Bromofluorobenzene	97.4	80-120		%REC	1	3/22/2012 5:20:59 PM

Qualifiers:	* / X	Value exceeds Maximum Contaminant Level.	B	Analyte detected in the associated Method Blank
	E	Value above quantitation range	H	Holding times for preparation or analysis exceeded
	J	Analyte detected below quantitation limits	ND	Not Detected at the Reporting Limit
	R	RPD outside accepted recovery limits	RL	Reporting Detection Limit
	S	Spike Recovery outside accepted recovery limits		

Analytical ReportLab Order **1203644**Date Reported: **3/28/2012****Hall Environmental Analysis Laboratory, Inc.****CLIENT:** Animas Environmental Services**Client Sample ID:** SB-6 @ 2'**Project:** Enterprise K-31**Collection Date:** 3/16/2012 9:40:00 AM**Lab ID:** 1203644-015**Matrix:** SOIL**Received Date:** 3/17/2012 10:30:00 AM

Analyses	Result	RL	Qual	Units	DF	Date Analyzed
EPA METHOD 8015B: DIESEL RANGE ORGANICS						Analyst: JMP
Diesel Range Organics (DRO)	77	10		mg/Kg	1	3/21/2012 9:53:48 AM
Surr: DNOP	91.8	77.4-131		%REC	1	3/21/2012 9:53:48 AM
EPA METHOD 8015B: GASOLINE RANGE						Analyst: NSB
Gasoline Range Organics (GRO)	11	9.7		mg/Kg	2	3/23/2012 11:39:35 PM
Surr: BFB	117	69.7-121		%REC	2	3/23/2012 11:39:35 PM
EPA METHOD 8021B: VOLATILES						Analyst: NSB
Benzene	ND	0.097		mg/Kg	2	3/22/2012 5:49:49 PM
Toluene	ND	0.097		mg/Kg	2	3/22/2012 5:49:49 PM
Ethylbenzene	ND	0.097		mg/Kg	2	3/22/2012 5:49:49 PM
Xylenes, Total	0.31	0.19		mg/Kg	2	3/22/2012 5:49:49 PM
Surr: 4-Bromofluorobenzene	97.6	80-120		%REC	2	3/22/2012 5:49:49 PM

Qualifiers: */X Value exceeds Maximum Contaminant Level.
 E Value above quantitation range
 J Analyte detected below quantitation limits
 R RPD outside accepted recovery limits
 S Spike Recovery outside accepted recovery limits

B Analyte detected in the associated Method Blank
H Holding times for preparation or analysis exceeded
ND Not Detected at the Reporting Limit
RL Reporting Detection Limit

Hall Environmental Analysis Laboratory, Inc.

Analytical Report

Lab Order 1203644

Date Reported: 3/28/2012

CLIENT: Animas Environmental Services

Client Sample ID: SB-6 @ 14'

Project: Enterprise K-31

Collection Date: 3/16/2012 9:48:00 AM

Lab ID: 1203644-016

Matrix: SOIL

Received Date: 3/17/2012 10:30:00 AM

Analyses	Result	RL	Qual	Units	DF	Date Analyzed
EPA METHOD 8015B: DIESEL RANGE ORGANICS						Analyst: JPM
Diesel Range Organics (DRO)	ND	10		mg/Kg	1	3/21/2012 10:37:24 AM
Surr: DNOP	85.4	77.4-131		%REC	1	3/21/2012 10:37:24 AM
EPA METHOD 8015B: GASOLINE RANGE						Analyst: NSB
Gasoline Range Organics (GRO)	ND	4.9		mg/Kg	1	3/24/2012 12:08:23 AM
Surr: BFB	99.0	69.7-121		%REC	1	3/24/2012 12:08:23 AM
EPA METHOD 8021B: VOLATILES						Analyst: NSB
Benzene	ND	0.049		mg/Kg	1	3/22/2012 6:47:28 PM
Toluene	ND	0.049		mg/Kg	1	3/22/2012 6:47:28 PM
Ethylbenzene	ND	0.049		mg/Kg	1	3/22/2012 6:47:28 PM
Xylenes, Total	ND	0.097		mg/Kg	1	3/22/2012 6:47:28 PM
Surr: 4-Bromofluorobenzene	94.4	80-120		%REC	1	3/22/2012 6:47:28 PM

Qualifiers:	* / X	Value exceeds Maximum Contaminant Level.	B	Analyte detected in the associated Method Blank
	E	Value above quantitation range	H	Holding times for preparation or analysis exceeded
	J	Analyte detected below quantitation limits	ND	Not Detected at the Reporting Limit
	R	RPD outside accepted recovery limits	RL	Reporting Detection Limit
	S	Spike Recovery outside accepted recovery limits		

Analytical ReportLab Order **1203644**Date Reported: **3/28/2012****Hall Environmental Analysis Laboratory, Inc.****CLIENT:** Animas Environmental Services**Client Sample ID:** SB-7 @ 6'**Project:** Enterprise K-31**Collection Date:** 3/16/2012 10:16:00 AM**Lab ID:** 1203644-017**Matrix:** SOIL**Received Date:** 3/17/2012 10:30:00 AM

Analyses	Result	RL	Qual	Units	DF	Date Analyzed
EPA METHOD 8015B: DIESEL RANGE ORGANICS						Analyst: JMP
Diesel Range Organics (DRO)	ND	10		mg/Kg	1	3/21/2012 10:58:46 AM
Surr: DNOP	95.8	77.4-131		%REC	1	3/21/2012 10:58:46 AM
EPA METHOD 8015B: GASOLINE RANGE						Analyst: NSB
Gasoline Range Organics (GRO)	ND	4.7		mg/Kg	1	3/24/2012 12:37:09 AM
Surr: BFB	96.9	69.7-121		%REC	1	3/24/2012 12:37:09 AM
EPA METHOD 8021B: VOLATILES						Analyst: NSB
Benzene	ND	0.047		mg/Kg	1	3/22/2012 7:16:15 PM
Toluene	ND	0.047		mg/Kg	1	3/22/2012 7:16:15 PM
Ethylbenzene	ND	0.047		mg/Kg	1	3/22/2012 7:16:15 PM
Xylenes, Total	ND	0.095		mg/Kg	1	3/22/2012 7:16:15 PM
Surr: 4-Bromofluorobenzene	96.2	80-120		%REC	1	3/22/2012 7:16:15 PM

Qualifiers: */X Value exceeds Maximum Contaminant Level.
 E Value above quantitation range
 J Analyte detected below quantitation limits
 R RPD outside accepted recovery limits
 S Spike Recovery outside accepted recovery limits

B Analyte detected in the associated Method Blank
H Holding times for preparation or analysis exceeded
ND Not Detected at the Reporting Limit
RL Reporting Detection Limit

Hall Environmental Analysis Laboratory, Inc.

Analytical Report

Lab Order 1203644

Date Reported: 3/28/2012

CLIENT: Animas Environmental Services

Client Sample ID: SB-7 @ 14'

Project: Enterprise K-31

Collection Date: 3/16/2012 10:22:00 AM

Lab ID: 1203644-018

Matrix: SOIL

Received Date: 3/17/2012 10:30:00 AM

Analyses	Result	RL	Qual	Units	DF	Date Analyzed
EPA METHOD 8015B: DIESEL RANGE ORGANICS						Analyst: JMP
Diesel Range Organics (DRO)	ND	9.9		mg/Kg	1	3/21/2012 11:20:33 AM
Surr: DNOP	93.6	77.4-131		%REC	1	3/21/2012 11:20:33 AM
EPA METHOD 8015B: GASOLINE RANGE						Analyst: NSB
Gasoline Range Organics (GRO)	ND	4.9		mg/Kg	1	3/24/2012 1:05:53 AM
Surr: BFB	96.0	69.7-121		%REC	1	3/24/2012 1:05:53 AM
EPA METHOD 8021B: VOLATILES						Analyst: NSB
Benzene	ND	0.049		mg/Kg	1	3/23/2012 1:01:13 AM
Toluene	ND	0.049		mg/Kg	1	3/23/2012 1:01:13 AM
Ethylbenzene	ND	0.049		mg/Kg	1	3/23/2012 1:01:13 AM
Xylenes, Total	ND	0.098		mg/Kg	1	3/23/2012 1:01:13 AM
Surr: 4-Bromofluorobenzene	96.1	80-120		%REC	1	3/23/2012 1:01:13 AM

Qualifiers: */X Value exceeds Maximum Contaminant Level.
E Value above quantitation range
J Analyte detected below quantitation limits
R RPD outside accepted recovery limits
S Spike Recovery outside accepted recovery limits

B Analyte detected in the associated Method Blank
H Holding times for preparation or analysis exceeded
ND Not Detected at the Reporting Limit
RL Reporting Detection Limit

Analytical ReportLab Order **1203644**Date Reported: **3/28/2012****Hall Environmental Analysis Laboratory, Inc.****CLIENT:** Animas Environmental Services**Client Sample ID:** SB-8 @ 4'**Project:** Enterprise K-31**Collection Date:** 3/16/2012 10:48:00 AM**Lab ID:** 1203644-019**Matrix:** SOIL**Received Date:** 3/17/2012 10:30:00 AM

Analyses	Result	RL	Qual	Units	DF	Date Analyzed
EPA METHOD 8015B: DIESEL RANGE ORGANICS						Analyst: JMP
Diesel Range Organics (DRO)	ND	10		mg/Kg	1	3/21/2012 11:42:03 AM
Surr: DNOP	92.6	77.4-131		%REC	1	3/21/2012 11:42:03 AM
EPA METHOD 8015B: GASOLINE RANGE						Analyst: NSB
Gasoline Range Organics (GRO)	ND	5.0		mg/Kg	1	3/24/2012 1:34:36 AM
Surr: BFB	109	69.7-121		%REC	1	3/24/2012 1:34:36 AM
EPA METHOD 8021B: VOLATILES						Analyst: NSB
Benzene	ND	0.050		mg/Kg	1	3/23/2012 1:29:55 AM
Toluene	ND	0.050		mg/Kg	1	3/23/2012 1:29:55 AM
Ethylbenzene	ND	0.050		mg/Kg	1	3/23/2012 1:29:55 AM
Xylenes, Total	0.20	0.099		mg/Kg	1	3/23/2012 1:29:55 AM
Surr: 4-Bromofluorobenzene	96.8	80-120		%REC	1	3/23/2012 1:29:55 AM

Qualifiers: */X Value exceeds Maximum Contaminant Level.
 E Value above quantitation range
 J Analyte detected below quantitation limits
 R RPD outside accepted recovery limits
 S Spike Recovery outside accepted recovery limits

B Analyte detected in the associated Method Blank
H Holding times for preparation or analysis exceeded
ND Not Detected at the Reporting Limit
RL Reporting Detection Limit

Hall Environmental Analysis Laboratory, Inc.

Analytical Report

Lab Order **1203644**

Date Reported: **3/28/2012**

CLIENT: Animas Environmental Services

Client Sample ID: SB-8 @ 14'

Project: Enterprise K-31

Collection Date: 3/16/2012 10:57:00 AM

Lab ID: 1203644-020

Matrix: SOIL

Received Date: 3/17/2012 10:30:00 AM

Analyses	Result	RL	Qual	Units	DF	Date Analyzed
EPA METHOD 8015B: DIESEL RANGE ORGANICS						Analyst: JMP
Diesel Range Organics (DRO)	ND	9.9		mg/Kg	1	3/21/2012 12:03:31 PM
Surr: DNOP	93.0	77.4-131		%REC	1	3/21/2012 12:03:31 PM
EPA METHOD 8015B: GASOLINE RANGE						Analyst: NSB
Gasoline Range Organics (GRO)	ND	4.7		mg/Kg	1	3/24/2012 2:03:16 AM
Surr: BFB	100	69.7-121		%REC	1	3/24/2012 2:03:16 AM
EPA METHOD 8021B: VOLATILES						Analyst: NSB
Benzene	ND	0.047		mg/Kg	1	3/23/2012 1:58:43 AM
Toluene	ND	0.047		mg/Kg	1	3/23/2012 1:58:43 AM
Ethylbenzene	ND	0.047		mg/Kg	1	3/23/2012 1:58:43 AM
Xylenes, Total	0.098	0.093		mg/Kg	1	3/23/2012 1:58:43 AM
Surr: 4-Bromofluorobenzene	97.3	80-120		%REC	1	3/23/2012 1:58:43 AM

Qualifiers: */X Value exceeds Maximum Contaminant Level.
 E Value above quantitation range
 J Analyte detected below quantitation limits
 R RPD outside accepted recovery limits
 S Spike Recovery outside accepted recovery limits

 B Analyte detected in the associated Method Blank
 H Holding times for preparation or analysis exceeded
 ND Not Detected at the Reporting Limit
 RL Reporting Detection Limit

Hall Environmental Analysis Laboratory, Inc.

Analytical Report

Lab Order 1203644

Date Reported: 3/28/2012

CLIENT: Animas Environmental Services

Client Sample ID: SB-9 @ 10'

Project: Enterprise K-31

Collection Date: 3/16/2012 11:32:00 AM

Lab ID: 1203644-021

Matrix: SOIL

Received Date: 3/17/2012 10:30:00 AM

Analyses	Result	RL	Qual	Units	DF	Date Analyzed
EPA METHOD 8015B: DIESEL RANGE ORGANICS						Analyst: JMP
Diesel Range Organics (DRO)	250	100		mg/Kg	10	3/21/2012 6:58:42 PM
Surr: DNOP	0	77.4-131	S	%REC	10	3/21/2012 6:58:42 PM
EPA METHOD 8015B: GASOLINE RANGE						Analyst: NSB
Gasoline Range Organics (GRO)	190	48		mg/Kg	10	3/24/2012 2:31:59 AM
Surr: BFB	129	69.7-121	S	%REC	10	3/24/2012 2:31:59 AM
EPA METHOD 8021B: VOLATILES						Analyst: NSB
Benzene	0.51	0.24		mg/Kg	5	3/23/2012 2:27:31 AM
Toluene	9.4	0.24		mg/Kg	5	3/23/2012 2:27:31 AM
Ethylbenzene	1.9	0.24		mg/Kg	5	3/23/2012 2:27:31 AM
Xylenes, Total	19	0.48		mg/Kg	5	3/23/2012 2:27:31 AM
Surr: 4-Bromofluorobenzene	106	80-120		%REC	5	3/23/2012 2:27:31 AM

Qualifiers: */X Value exceeds Maximum Contaminant Level.
E Value above quantitation range
J Analyte detected below quantitation limits
R RPD outside accepted recovery limits
S Spike Recovery outside accepted recovery limits

B Analyte detected in the associated Method Blank
H Holding times for preparation or analysis exceeded
ND Not Detected at the Reporting Limit
RL Reporting Detection Limit

Hall Environmental Analysis Laboratory, Inc.

Analytical Report

Lab Order 1203644

Date Reported: 3/28/2012

CLIENT: Animas Environmental Services

Client Sample ID: SB-9 @ 14'

Project: Enterprise K-31

Collection Date: 3/16/2012 11:33:00 AM

Lab ID: 1203644-022

Matrix: SOIL

Received Date: 3/17/2012 10:30:00 AM

Analyses	Result	RL	Qual	Units	DF	Date Analyzed
EPA METHOD 8015B: DIESEL RANGE ORGANICS						Analyst: JMP
Diesel Range Organics (DRO)	2,000	100		mg/Kg	10	3/21/2012 6:33:36 PM
Surr: DNOP	0	77.4-131	S	%REC	10	3/21/2012 6:33:36 PM
EPA METHOD 8015B: GASOLINE RANGE						Analyst: NSB
Gasoline Range Organics (GRO)	6,700	1,000		mg/Kg	200	3/24/2012 3:00:49 AM
Surr: BFB	142	69.7-121	S	%REC	200	3/24/2012 3:00:49 AM
EPA METHOD 8021B: VOLATILES						Analyst: NSB
Benzene	29	2.5		mg/Kg	50	3/23/2012 3:24:59 AM
Toluene	480	10		mg/Kg	200	3/24/2012 3:00:49 AM
Ethylbenzene	64	2.5		mg/Kg	50	3/23/2012 3:24:59 AM
Xylenes, Total	580	5.0		mg/Kg	50	3/23/2012 3:24:59 AM
Surr: 4-Bromofluorobenzene	119	80-120		%REC	50	3/23/2012 3:24:59 AM

Qualifiers: */X Value exceeds Maximum Contaminant Level.
E Value above quantitation range
J Analyte detected below quantitation limits
R RPD outside accepted recovery limits
S Spike Recovery outside accepted recovery limits

B Analyte detected in the associated Method Blank
H Holding times for preparation or analysis exceeded
ND Not Detected at the Reporting Limit
RL Reporting Detection Limit

Hall Environmental Analysis Laboratory, Inc.

Analytical Report

Lab Order 1203644

Date Reported: 3/28/2012

CLIENT: Animas Environmental Services

Client Sample ID: SB-10 @ 4'

Project: Enterprise K-31

Collection Date: 3/16/2012 12:23:00 PM

Lab ID: 1203644-023

Matrix: SOIL

Received Date: 3/17/2012 10:30:00 AM

Analyses	Result	RL	Qual	Units	DF	Date Analyzed
EPA METHOD 8015B: DIESEL RANGE ORGANICS						Analyst: JMP
Diesel Range Organics (DRO)	32	10		mg/Kg	1	3/21/2012 1:46:12 PM
Surr: DNOP	93.2	77.4-131		%REC	1	3/21/2012 1:46:12 PM
EPA METHOD 8015B: GASOLINE RANGE						Analyst: NSB
Gasoline Range Organics (GRO)	5.8	4.7		mg/Kg	1	3/24/2012 3:29:37 AM
Surr: BFB	117	69.7-121		%REC	1	3/24/2012 3:29:37 AM
EPA METHOD 8021B: VOLATILES						Analyst: NSB
Benzene	ND	0.047		mg/Kg	1	3/23/2012 4:22:26 AM
Toluene	ND	0.047		mg/Kg	1	3/23/2012 4:22:26 AM
Ethylbenzene	ND	0.047		mg/Kg	1	3/23/2012 4:22:26 AM
Xylenes, Total	0.20	0.094		mg/Kg	1	3/23/2012 4:22:26 AM
Surr: 4-Bromofluorobenzene	96.2	80-120		%REC	1	3/23/2012 4:22:26 AM

Qualifiers: * / X Value exceeds Maximum Contaminant Level.
E Value above quantitation range
J Analyte detected below quantitation limits
R RPD outside accepted recovery limits
S Spike Recovery outside accepted recovery limits

B Analyte detected in the associated Method Blank
H Holding times for preparation or analysis exceeded
ND Not Detected at the Reporting Limit
RL Reporting Detection Limit

Hall Environmental Analysis Laboratory, Inc.

Analytical Report

Lab Order 1203644

Date Reported: 3/28/2012

CLIENT: Animas Environmental Services

Client Sample ID: SB-10 @ 14'

Project: Enterprise K-31

Collection Date: 3/16/2012 12:33:00 PM

Lab ID: 1203644-024

Matrix: SOIL

Received Date: 3/17/2012 10:30:00 AM

Analyses	Result	RL	Qual	Units	DF	Date Analyzed
EPA METHOD 8015B: DIESEL RANGE ORGANICS						Analyst: JMP
Diesel Range Organics (DRO)	ND	9.9		mg/Kg	1	3/21/2012 2:07:30 PM
Surr: DNOP	96.5	77.4-131		%REC	1	3/21/2012 2:07:30 PM
EPA METHOD 8015B: GASOLINE RANGE						Analyst: NSB
Gasoline Range Organics (GRO)	ND	4.8		mg/Kg	1	3/25/2012 9:58:00 AM
Surr: BFB	97.7	69.7-121		%REC	1	3/25/2012 9:58:00 AM
EPA METHOD 8021B: VOLATILES						Analyst: NSB
Benzene	ND	0.048		mg/Kg	1	3/23/2012 5:19:45 AM
Toluene	ND	0.048		mg/Kg	1	3/23/2012 5:19:45 AM
Ethylbenzene	ND	0.048		mg/Kg	1	3/23/2012 5:19:45 AM
Xylenes, Total	ND	0.095		mg/Kg	1	3/23/2012 5:19:45 AM
Surr: 4-Bromofluorobenzene	96.0	80-120		%REC	1	3/23/2012 5:19:45 AM

Qualifiers: */X Value exceeds Maximum Contaminant Level.
E Value above quantitation range
J Analyte detected below quantitation limits
R RPD outside accepted recovery limits
S Spike Recovery outside accepted recovery limits

B Analyte detected in the associated Method Blank
H Holding times for preparation or analysis exceeded
ND Not Detected at the Reporting Limit
RL Reporting Detection Limit

Hall Environmental Analysis Laboratory, Inc.

Analytical Report

Lab Order 1203644

Date Reported: 3/28/2012

CLIENT: Animas Environmental Services

Client Sample ID: SB-11 @ 10'

Project: Enterprise K-31

Collection Date: 3/16/2012 1:03:00 PM

Lab ID: 1203644-025

Matrix: SOIL

Received Date: 3/17/2012 10:30:00 AM

Analyses	Result	RL	Qual	Units	DF	Date Analyzed
EPA METHOD 8015B: DIESEL RANGE ORGANICS						Analyst: JMP
Diesel Range Organics (DRO)	240	10		mg/Kg	1	3/21/2012 2:29:06 PM
Surr: DNOP	99.2	77.4-131		%REC	1	3/21/2012 2:29:06 PM
EPA METHOD 8015B: GASOLINE RANGE						Analyst: NSB
Gasoline Range Organics (GRO)	1,100	49		mg/Kg	10	3/23/2012 7:20:54 PM
Surr: BFB	444	69.7-121	S	%REC	10	3/23/2012 7:20:54 PM
EPA METHOD 8021B: VOLATILES						Analyst: NSB
Benzene	0.67	0.49		mg/Kg	10	3/23/2012 7:20:54 PM
Toluene	14	0.49		mg/Kg	10	3/23/2012 7:20:54 PM
Ethylbenzene	10	0.49		mg/Kg	10	3/23/2012 7:20:54 PM
Xylenes, Total	83	0.99		mg/Kg	10	3/23/2012 7:20:54 PM
Surr: 4-Bromofluorobenzene	127	80-120	S	%REC	10	3/23/2012 7:20:54 PM

Qualifiers:

- * / X Value exceeds Maximum Contaminant Level.
- E Value above quantitation range
- J Analyte detected below quantitation limits
- R RPD outside accepted recovery limits
- S Spike Recovery outside accepted recovery limits

- B Analyte detected in the associated Method Blank
- H Holding times for preparation or analysis exceeded
- ND Not Detected at the Reporting Limit
- RL Reporting Detection Limit

Hall Environmental Analysis Laboratory, Inc.

Analytical Report

Lab Order 1203644

Date Reported: 3/28/2012

CLIENT: Animas Environmental Services

Client Sample ID: SB-11 @ 14'

Project: Enterprise K-31

Collection Date: 3/16/2012 1:07:00 PM

Lab ID: 1203644-026

Matrix: SOIL

Received Date: 3/17/2012 10:30:00 AM

Analyses	Result	RL	Qual	Units	DF	Date Analyzed
EPA METHOD 8015B: DIESEL RANGE ORGANICS						Analyst: JMP
Diesel Range Organics (DRO)	ND	10		mg/Kg	1	3/21/2012 2:50:36 PM
Surr: DNOP	91.4	77.4-131		%REC	1	3/21/2012 2:50:36 PM
EPA METHOD 8015B: GASOLINE RANGE						Analyst: NSB
Gasoline Range Organics (GRO)	7.0	4.8		mg/Kg	1	3/25/2012 10:26:43 AM
Surr: BFB	113	69.7-121		%REC	1	3/25/2012 10:26:43 AM
EPA METHOD 8021B: VOLATILES						Analyst: NSB
Benzene	ND	0.048		mg/Kg	1	3/23/2012 5:48:23 AM
Toluene	ND	0.048		mg/Kg	1	3/23/2012 5:48:23 AM
Ethylbenzene	ND	0.048		mg/Kg	1	3/23/2012 5:48:23 AM
Xylenes, Total	ND	0.095		mg/Kg	1	3/23/2012 5:48:23 AM
Surr: 4-Bromofluorobenzene	98.0	80-120		%REC	1	3/23/2012 5:48:23 AM

Qualifiers: */X Value exceeds Maximum Contaminant Level.
E Value above quantitation range
J Analyte detected below quantitation limits
R RPD outside accepted recovery limits
S Spike Recovery outside accepted recovery limits

B Analyte detected in the associated Method Blank
H Holding times for preparation or analysis exceeded
ND Not Detected at the Reporting Limit
RL Reporting Detection Limit

Analytical Report

Lab Order 1203644

Date Reported: 3/28/2012

Hall Environmental Analysis Laboratory, Inc.

CLIENT: Animas Environmental Services

Client Sample ID: SB-12 @ 4'

Project: Enterprise K-31

Collection Date: 3/16/2012 1:39:00 PM

Lab ID: 1203644-027

Matrix: SOIL

Received Date: 3/17/2012 10:30:00 AM

Analyses	Result	RL	Qual	Units	DF	Date Analyzed
EPA METHOD 8015B: DIESEL RANGE ORGANICS						Analyst: JMP
Diesel Range Organics (DRO)	ND	10		mg/Kg	1	3/21/2012 5:17:29 PM
Surr: DNOP	98.2	77.4-131		%REC	1	3/21/2012 5:17:29 PM
EPA METHOD 8015B: GASOLINE RANGE						Analyst: NSB
Gasoline Range Organics (GRO)	ND	4.8		mg/Kg	1	3/25/2012 10:55:27 AM
Surr: BFB	99.4	69.7-121		%REC	1	3/25/2012 10:55:27 AM
EPA METHOD 8021B: VOLATILES						Analyst: NSB
Benzene	ND	0.048		mg/Kg	1	3/23/2012 7:49:44 PM
Toluene	ND	0.048		mg/Kg	1	3/23/2012 7:49:44 PM
Ethylbenzene	ND	0.048		mg/Kg	1	3/23/2012 7:49:44 PM
Xylenes, Total	ND	0.097		mg/Kg	1	3/23/2012 7:49:44 PM
Surr: 4-Bromofluorobenzene	99.7	80-120		%REC	1	3/23/2012 7:49:44 PM

Qualifiers:

- * / X Value exceeds Maximum Contaminant Level.
- E Value above quantitation range
- J Analyte detected below quantitation limits
- R RPD outside accepted recovery limits
- S Spike Recovery outside accepted recovery limits

- B Analyte detected in the associated Method Blank
- H Holding times for preparation or analysis exceeded
- ND Not Detected at the Reporting Limit
- RL Reporting Detection Limit

Analytical Report

Lab Order 1203644

Date Reported: 3/28/2012

Hall Environmental Analysis Laboratory, Inc.**CLIENT:** Animas Environmental Services**Client Sample ID:** SB-12 @ 14'**Project:** Enterprise K-31**Collection Date:** 3/16/2012 1:45:00 PM**Lab ID:** 1203644-028**Matrix:** SOIL**Received Date:** 3/17/2012 10:30:00 AM

Analyses	Result	RL	Qual	Units	DF	Date Analyzed
EPA METHOD 8015B: DIESEL RANGE ORGANICS						Analyst: JMP
Diesel Range Organics (DRO)	ND	10		mg/Kg	1	3/21/2012 5:42:51 PM
Surr: DNOP	96.6	77.4-131		%REC	1	3/21/2012 5:42:51 PM
EPA METHOD 8015B: GASOLINE RANGE						Analyst: NSB
Gasoline Range Organics (GRO)	ND	4.8		mg/Kg	1	3/23/2012 8:18:29 PM
Surr: BFB	105	69.7-121		%REC	1	3/23/2012 8:18:29 PM
EPA METHOD 8021B: VOLATILES						Analyst: NSB
Benzene	0.070	0.048		mg/Kg	1	3/23/2012 8:18:29 PM
Toluene	ND	0.048		mg/Kg	1	3/23/2012 8:18:29 PM
Ethylbenzene	ND	0.048		mg/Kg	1	3/23/2012 8:18:29 PM
Xylenes, Total	ND	0.096		mg/Kg	1	3/23/2012 8:18:29 PM
Surr: 4-Bromofluorobenzene	99.3	80-120		%REC	1	3/23/2012 8:18:29 PM

Qualifiers: */X Value exceeds Maximum Contaminant Level.
 E Value above quantitation range
 J Analyte detected below quantitation limits
 R RPD outside accepted recovery limits
 S Spike Recovery outside accepted recovery limits

B Analyte detected in the associated Method Blank
H Holding times for preparation or analysis exceeded
ND Not Detected at the Reporting Limit
RL Reporting Detection Limit

Analytical ReportLab Order **1203644**Date Reported: **3/28/2012****Hall Environmental Analysis Laboratory, Inc.****CLIENT:** Animas Environmental Services**Client Sample ID:** SB-5**Project:** Enterprise K-31**Collection Date:** 3/16/2012 9:25:00 AM**Lab ID:** 1203644-029**Matrix:** AQUEOUS**Received Date:** 3/17/2012 10:30:00 AM

Analyses	Result	RL	Qual	Units	DF	Date Analyzed
EPA METHOD 8021B: VOLATILES						Analyst: NSB
Benzene	5.8	2.0		µg/L	2	3/23/2012 2:44:26 PM
Toluene	2.5	2.0		µg/L	2	3/23/2012 2:44:26 PM
Ethylbenzene	ND	2.0		µg/L	2	3/23/2012 2:44:26 PM
Xylenes, Total	ND	4.0		µg/L	2	3/23/2012 2:44:26 PM
Surr: 4-Bromofluorobenzene	89.6	55-140		%REC	2	3/23/2012 2:44:26 PM

Qualifiers: */X Value exceeds Maximum Contaminant Level.
 E Value above quantitation range
 J Analyte detected below quantitation limits
 R RPD outside accepted recovery limits
 S Spike Recovery outside accepted recovery limits

 B Analyte detected in the associated Method Blank
 H Holding times for preparation or analysis exceeded
 ND Not Detected at the Reporting Limit
 RL Reporting Detection Limit

Hall Environmental Analysis Laboratory, Inc.

CLIENT: Animas Environmental Services **Client Sample ID:** SB-6
Project: Enterprise K-31 **Collection Date:** 3/16/2012 10:00:00 AM
Lab ID: 1203644-030 **Matrix:** AQUEOUS **Received Date:** 3/17/2012 10:30:00 AM

Analyses	Result	RL	Qual	Units	DF	Date Analyzed
EPA METHOD 8021B: VOLATILES						Analyst: NSB
Benzene	1.2	1.0		µg/L	1	3/22/2012 5:46:26 PM
Toluene	ND	1.0		µg/L	1	3/22/2012 5:46:26 PM
Ethylbenzene	ND	1.0		µg/L	1	3/22/2012 5:46:26 PM
Xylenes, Total	ND	2.0		µg/L	1	3/22/2012 5:46:26 PM
Surr: 4-Bromofluorobenzene	74.9	55-140		%REC	1	3/22/2012 5:46:26 PM

Qualifiers:	* /X	Value exceeds Maximum Contaminant Level.	B	Analyte detected in the associated Method Blank
	E	Value above quantitation range	H	Holding times for preparation or analysis exceeded
	J	Analyte detected below quantitation limits	ND	Not Detected at the Reporting Limit
	R	RPD outside accepted recovery limits	RL	Reporting Detection Limit
	S	Spike Recovery outside accepted recovery limits		

Analytical ReportLab Order **1203644**Date Reported: **3/28/2012****Hall Environmental Analysis Laboratory, Inc.****CLIENT:** Animas Environmental Services**Client Sample ID:** SB-7**Project:** Enterprise K-31**Collection Date:** 3/16/2012 10:40:00 AM**Lab ID:** 1203644-031**Matrix:** AQUEOUS**Received Date:** 3/17/2012 10:30:00 AM

Analyses	Result	RL	Qual	Units	DF	Date Analyzed
EPA METHOD 8021B: VOLATILES						Analyst: NSB
Benzene	37	2.0		µg/L	2	3/23/2012 3:14:47 PM
Toluene	ND	2.0		µg/L	2	3/23/2012 3:14:47 PM
Ethylbenzene	ND	2.0		µg/L	2	3/23/2012 3:14:47 PM
Xylenes, Total	ND	4.0		µg/L	2	3/23/2012 3:14:47 PM
Surr: 4-Bromofluorobenzene	94.7	55-140		%REC	2	3/23/2012 3:14:47 PM

Qualifiers: */X Value exceeds Maximum Contaminant Level.
 E Value above quantitation range
 J Analyte detected below quantitation limits
 R RPD outside accepted recovery limits
 S Spike Recovery outside accepted recovery limits

 B Analyte detected in the associated Method Blank
 H Holding times for preparation or analysis exceeded
 ND Not Detected at the Reporting Limit
 RL Reporting Detection Limit

Hall Environmental Analysis Laboratory, Inc.

Analytical Report

Lab Order **1203644**

Date Reported: **3/28/2012**

CLIENT: Animas Environmental Services

Client Sample ID: SB-8

Project: Enterprise K-31

Collection Date: 3/16/2012 11:08:00 AM

Lab ID: 1203644-032

Matrix: AQUEOUS

Received Date: 3/17/2012 10:30:00 AM

Analyses	Result	RL	Qual	Units	DF	Date Analyzed
EPA METHOD 8021B: VOLATILES						Analyst: NSB
Benzene	2.2	2.0		µg/L	2	3/23/2012 1:49:43 AM
Toluene	ND	2.0		µg/L	2	3/23/2012 1:49:43 AM
Ethylbenzene	ND	2.0		µg/L	2	3/23/2012 1:49:43 AM
Xylenes, Total	ND	4.0		µg/L	2	3/23/2012 1:49:43 AM
Surr: 4-Bromofluorobenzene	84.5	55-140		%REC	2	3/23/2012 1:49:43 AM

Qualifiers:	*X	Value exceeds Maximum Contaminant Level.	B	Analyte detected in the associated Method Blank
	E	Value above quantitation range	H	Holding times for preparation or analysis exceeded
	J	Analyte detected below quantitation limits	ND	Not Detected at the Reporting Limit
	R	RPD outside accepted recovery limits	RL	Reporting Detection Limit
	S	Spike Recovery outside accepted recovery limits		

Analytical ReportLab Order **1203644**Date Reported: **3/28/2012****Hall Environmental Analysis Laboratory, Inc.****CLIENT:** Animas Environmental Services**Client Sample ID:** SB-9**Project:** Enterprise K-31**Collection Date:** 3/16/2012 11:55:00 AM**Lab ID:** 1203644-033**Matrix:** AQUEOUS**Received Date:** 3/17/2012 10:30:00 AM

Analyses	Result	RL	Qual	Units	DF	Date Analyzed
EPA METHOD 8021B: VOLATILES						Analyst: NSB
Benzene	430	10		µg/L	10	3/23/2012 2:19:53 AM
Toluene	670	10		µg/L	10	3/23/2012 2:19:53 AM
Ethylbenzene	70	10		µg/L	10	3/23/2012 2:19:53 AM
Xylenes, Total	400	20		µg/L	10	3/23/2012 2:19:53 AM
Surr: 4-Bromofluorobenzene	81.6	55-140		%REC	10	3/23/2012 2:19:53 AM

Qualifiers: */X Value exceeds Maximum Contaminant Level.
 E Value above quantitation range
 J Analyte detected below quantitation limits
 R RPD outside accepted recovery limits
 S Spike Recovery outside accepted recovery limits

 B Analyte detected in the associated Method Blank
 H Holding times for preparation or analysis exceeded
 ND Not Detected at the Reporting Limit
 RL Reporting Detection Limit

Hall Environmental Analysis Laboratory, Inc.

Analytical Report

Lab Order **1203644**

Date Reported: 3/28/2012

CLIENT: Animas Environmental Services

Client Sample ID: SB-10

Project: Enterprise K-31

Collection Date: 3/16/2012 12:43:00 PM

Lab ID: 1203644-034

Matrix: AQUEOUS

Received Date: 3/17/2012 10:30:00 AM

Analyses	Result	RL	Qual	Units	DF	Date Analyzed
EPA METHOD 8021B: VOLATILES						Analyst: NSB
Benzene	7.9	2.0		µg/L	2	3/23/2012 3:44:59 PM
Toluene	9.1	2.0		µg/L	2	3/23/2012 3:44:59 PM
Ethylbenzene	ND	2.0		µg/L	2	3/23/2012 3:44:59 PM
Xylenes, Total	5.1	4.0		µg/L	2	3/23/2012 3:44:59 PM
Surr: 4-Bromofluorobenzene	93.5	55-140		%REC	2	3/23/2012 3:44:59 PM

Qualifiers:	* / X	Value exceeds Maximum Contaminant Level.	B	Analyte detected in the associated Method Blank
	E	Value above quantitation range	H	Holding times for preparation or analysis exceeded
	J	Analyte detected below quantitation limits	ND	Not Detected at the Reporting Limit
	R	RPD outside accepted recovery limits	RL	Reporting Detection Limit
	S	Spike Recovery outside accepted recovery limits		

Analytical Report

Lab Order 1203644

Date Reported: 3/28/2012

Hall Environmental Analysis Laboratory, Inc.**CLIENT:** Animas Environmental Services**Client Sample ID:** SB-11**Project:** Enterprise K-31**Collection Date:** 3/16/2012 1:50:00 PM**Lab ID:** 1203644-035**Matrix:** AQUEOUS**Received Date:** 3/17/2012 10:30:00 AM

Analyses	Result	RL	Qual	Units	DF	Date Analyzed
EPA METHOD 8021B: VOLATILES						Analyst: NSB
Benzene	1,400	20		µg/L	20	3/23/2012 5:15:31 PM
Toluene	98	20		µg/L	20	3/23/2012 5:15:31 PM
Ethylbenzene	ND	20		µg/L	20	3/23/2012 5:15:31 PM
Xylenes, Total	140	40		µg/L	20	3/23/2012 5:15:31 PM
Surr: 4-Bromofluorobenzene	94.6	55-140		%REC	20	3/23/2012 5:15:31 PM

Qualifiers: */X Value exceeds Maximum Contaminant Level.
E Value above quantitation range
J Analyte detected below quantitation limits
R RPD outside accepted recovery limits
S Spike Recovery outside accepted recovery limits

B Analyte detected in the associated Method Blank
H Holding times for preparation or analysis exceeded
ND Not Detected at the Reporting Limit
RL Reporting Detection Limit

Hall Environmental Analysis Laboratory, Inc.

CLIENT: Animas Environmental Services

Client Sample ID: SB-12

Project: Enterprise K-31

Collection Date: 3/16/2012 1:55:00 PM

Lab ID: 1203644-036

Matrix: AQUEOUS

Received Date: 3/17/2012 10:30:00 AM

Analyses	Result	RL	Qual	Units	DF	Date Analyzed
EPA METHOD 8021B: VOLATILES						Analyst: NSB
Benzene	13	2.0		µg/L	2	3/23/2012 4:50:48 AM
Toluene	7.0	2.0		µg/L	2	3/23/2012 4:50:48 AM
Ethylbenzene	ND	2.0		µg/L	2	3/23/2012 4:50:48 AM
Xylenes, Total	4.3	4.0		µg/L	2	3/23/2012 4:50:48 AM
Surr: 4-Bromofluorobenzene	73.1	55-140		%REC	2	3/23/2012 4:50:48 AM

Qualifiers:	*X	Value exceeds Maximum Contaminant Level.	B	Analyte detected in the associated Method Blank
	E	Value above quantitation range	H	Holding times for preparation or analysis exceeded
	J	Analyte detected below quantitation limits	ND	Not Detected at the Reporting Limit
	R	RPD outside accepted recovery limits	RL	Reporting Detection Limit
	S	Spike Recovery outside accepted recovery limits		

QC SUMMARY REPORT

Hall Environmental Analysis Laboratory, Inc.

WO#: 1203644

28-Mar-12

Client: Animas Environmental Services

Project: Enterprise K-31

Sample ID	MB-1140		SampType:	MBLK		TestCode:	EPA Method 8015B: Diesel Range Organics			
Client ID:	PBS		Batch ID:	1140		RunNo:	1548			
Prep Date:	3/19/2012		Analysis Date:	3/20/2012		SeqNo:	43618		Units: mg/Kg	
Analyte	Result	PQL	SPK value	SPK Ref Val	%REC	LowLimit	HighLimit	%RPD	RPDLimit	Qual

Diesel Range Organics (DRO)

ND 10

Surr: DNOP

7.9

10.00

78.5

77.4

131

Sample ID	LCS-1140		SampType:	LCS		TestCode:	EPA Method 8015B: Diesel Range Organics			
Client ID:	LCSS		Batch ID:	1140		RunNo:	1548			
Prep Date:	3/19/2012		Analysis Date:	3/20/2012		SeqNo:	43635		Units: mg/Kg	
Analyte	Result	PQL	SPK value	SPK Ref Val	%REC	LowLimit	HighLimit	%RPD	RPDLimit	Qual

Diesel Range Organics (DRO)

40

10

50.00

0

80.1

62.7

139

Surr: DNOP

5.2

5.000

103

77.4

131

Sample ID	1203560-001AMS		SampType:	MS		TestCode:	EPA Method 8015B: Diesel Range Organics			
Client ID:	BatchQC		Batch ID:	1140		RunNo:	1548			
Prep Date:	3/19/2012		Analysis Date:	3/20/2012		SeqNo:	43844		Units: mg/Kg	
Analyte	Result	PQL	SPK value	SPK Ref Val	%REC	LowLimit	HighLimit	%RPD	RPDLimit	Qual

Diesel Range Organics (DRO)

35

9.7

48.69

0

72.4

57.2

146

Surr: DNOP

3.9

4.869

79.4

77.4

131

Sample ID	1203560-001AMSD		SampType:	MSD		TestCode:	EPA Method 8015B: Diesel Range Organics			
Client ID:	BatchQC		Batch ID:	1140		RunNo:	1548			
Prep Date:	3/19/2012		Analysis Date:	3/20/2012		SeqNo:	43957		Units: mg/Kg	
Analyte	Result	PQL	SPK value	SPK Ref Val	%REC	LowLimit	HighLimit	%RPD	RPDLimit	Qual

Diesel Range Organics (DRO)

34

9.7

48.69

0

70.7

57.2

146

Surr: DNOP

4.2

4.869

86.9

77.4

131

2.25

26.7

0

0

Sample ID	MB-1147		SampType:	MBLK		TestCode:	EPA Method 8015B: Diesel Range Organics			
Client ID:	PBS		Batch ID:	1147		RunNo:	1548			
Prep Date:	3/20/2012		Analysis Date:	3/21/2012		SeqNo:	44229		Units: mg/Kg	
Analyte	Result	PQL	SPK value	SPK Ref Val	%REC	LowLimit	HighLimit	%RPD	RPDLimit	Qual

Diesel Range Organics (DRO)

ND

10

Surr: DNOP

7.7

10.00

77.2

77.4

131

S

Sample ID	LCS-1147		SampType:	LCS		TestCode:	EPA Method 8015B: Diesel Range Organics			
Client ID:	LCSS		Batch ID:	1147		RunNo:	1548			
Prep Date:	3/20/2012		Analysis Date:	3/21/2012		SeqNo:	44230		Units: mg/Kg	
Analyte	Result	PQL	SPK value	SPK Ref Val	%REC	LowLimit	HighLimit	%RPD	RPDLimit	Qual

Diesel Range Organics (DRO)

42

10

50.00

0

85.0

62.7

139

Surr: DNOP

4.1

5.000

83.0

77.4

131

Qualifiers:

*/X Value exceeds Maximum Contaminant Level.

E Value above quantitation range

J Analyte detected below quantitation limits

R RPD outside accepted recovery limits

B Analyte detected in the associated Method Blank

H Holding times for preparation or analysis exceeded

ND Not Detected at the Reporting Limit

RL Reporting Detection Limit

QC SUMMARY REPORT

Hall Environmental Analysis Laboratory, Inc.

WO#: 1203644

28-Mar-12

Client: Animas Environmental Services

Project: Enterprise K-31

Sample ID	1203644-006AMS	SampType:	MS	TestCode:	EPA Method 8015B: Diesel Range Organics					
Client ID:	SB-3 @ 14'	Batch ID:	1147	RunNo:	1548					
Prep Date:	3/20/2012	Analysis Date:	3/21/2012	SeqNo:	44293	Units:	mg/Kg			
Analyte	Result	PQL	SPK value	SPK Ref Val	%REC	LowLimit	HighLimit	%RPD	RPDLimit	Qual
Diesel Range Organics (DRO)	43	10	49.85	0	86.1	57.2	146			
Surr: DNOP	4.4		4.985		89.1	77.4	131			

Sample ID	1203644-006AMSD	SampType:	MSD	TestCode:	EPA Method 8015B: Diesel Range Organics					
Client ID:	SB-3 @ 14'	Batch ID:	1147	RunNo:	1548					
Prep Date:	3/20/2012	Analysis Date:	3/21/2012	SeqNo:	44458	Units:	mg/Kg			
Analyte	Result	PQL	SPK value	SPK Ref Val	%REC	LowLimit	HighLimit	%RPD	RPDLimit	Qual
Diesel Range Organics (DRO)	48	10	50.81	0	94.3	57.2	146	11.0	26.7	
Surr: DNOP	4.6		5.081		89.9	77.4	131	0	0	

Qualifiers:

* / X Value exceeds Maximum Contaminant Level.
E Value above quantitation range
J Analyte detected below quantitation limits
R RPD outside accepted recovery limits

B Analyte detected in the associated Method Blank
H Holding times for preparation or analysis exceeded
ND Not Detected at the Reporting Limit
RL Reporting Detection Limit

QC SUMMARY REPORT

Hall Environmental Analysis Laboratory, Inc.

WO#: 1203644

28-Mar-12

Client: Animas Environmental Services

Project: Enterprise K-31

Sample ID	MB-1137		SampType: MBLK		TestCode: EPA Method 8015B: Gasoline Range					
Client ID:	PBS		Batch ID: 1137		RunNo: 1567					
Prep Date:	3/19/2012		Analysis Date: 3/20/2012		SeqNo: 43981		Units: mg/Kg			
Analyte	Result	PQL	SPK value	SPK Ref Val	%REC	LowLimit	HighLimit	%RPD	RPDLimit	Qual

Gasoline Range Organics (GRO)	ND	5.0								
Surr: BFB	930		1,000		93.4	69.7	121			

Sample ID	LCS-1137		SampType: LCS		TestCode: EPA Method 8015B: Gasoline Range					
Client ID:	LCSS		Batch ID: 1137		RunNo: 1567					
Prep Date:	3/19/2012		Analysis Date: 3/20/2012		SeqNo: 43982		Units: mg/Kg			
Analyte	Result	PQL	SPK value	SPK Ref Val	%REC	LowLimit	HighLimit	%RPD	RPDLimit	Qual

Gasoline Range Organics (GRO)	27	5.0	25.00	0	108	98.5	133			
Surr: BFB	1,000		1,000		100	69.7	121			

Sample ID	1203640-001AMS		SampType:	MS		TestCode:	EPA Method 8015B: Gasoline Range				
Client ID:	BatchQC		Batch ID:	1137		RunNo:	1567				
Prep Date:	3/19/2012		Analysis Date:	3/20/2012		SeqNo:	44445		Units: mg/Kg		
Analyte	Result	PQL	SPK value	SPK Ref Val	%REC	LowLimit	HighLimit	%RPD	RPDLimit	Qual	

Gasoline Range Organics (GRO)	25	4.8	23.95	0	103	85.4	147			
Surr: BFB	960		957.9		100	69.7	121			

Sample ID	1203640-001AMSD			SampType:	MSD		TestCode:	EPA Method 8015B: Gasoline Range			
Client ID:	BatchQC		Batch ID:		1137		RunNo:	1567			
Prep Date:	3/19/2012		Analysis Date:		3/21/2012		SeqNo:	44446		Units: mg/Kg	
Analyte	Result	PQL	SPK value	SPK Ref Val	%REC	LowLimit	HighLimit	%RPD	RPDLimit	Qual	

Gasoline Range Organics (GRO)	26	4.7	23.74	0	109	85.4	147	4.37	19.2	
Surr: BFB	970		949.7		102	69.7	121	0	0	

Sample ID	1203644-008AMS		SampType:	MS		TestCode:	EPA Method 8015B: Gasoline Range				
Client ID:	SB-4 @ 14'		Batch ID:	1139		RunNo:	1635				
Prep Date:	3/19/2012		Analysis Date:	3/23/2012		SeqNo:	46848		Units: mg/Kg		
Analyte	Result	PQL	SPK value	SPK Ref Val	%REC	LowLimit	HighLimit	%RPD	RPDLimit	Qual	

Gasoline Range Organics (GRO)	30	4.9	24.37	0	123	85.4	147			
Surr: BFB	1,000		974.7		103	69.7	121			

Sample ID	1203644-008AMSD			SampType:	MSD		TestCode:	EPA Method 8015B: Gasoline Range			
Client ID:	SB-4 @ 14'			Batch ID:	1139		RunNo:	1635			
Prep Date:	3/19/2012			Analysis Date:	3/23/2012		SeqNo:	46849		Units:	mg/Kg
Analyte	Result	PQL	SPK value	SPK Ref Val	%REC	LowLimit	HighLimit	%RPD	RPDLimit	Qual	

Gasoline Range Organics (GRO)	29	4.9	24.44	0	117	85.4	147	4.70	19.2	
Surr: BFB	1,000		977.5		103	69.7	121	0	0	

Qualifiers:

* / X Value exceeds Maximum Contaminant Level.
E Value above quantitation range
J Analyte detected below quantitation limits
R RPD outside accepted recovery limits

B Analyte detected in the associated Method Blank
H Holding times for preparation or analysis exceeded
ND Not Detected at the Reporting Limit
RL Reporting Detection Limit

QC SUMMARY REPORT

Hall Environmental Analysis Laboratory, Inc.

WO#: 1203644

28-Mar-12

Client: Animas Environmental Services

Project: Enterprise K-31

Sample ID	MB-1139	SampType:	MBLK	TestCode:	EPA Method 8015B: Gasoline Range					
Client ID:	PBS	Batch ID:	1139	RunNo:	1635					
Prep Date:	3/19/2012	Analysis Date:	3/23/2012	SeqNo:	46850	Units:	mg/Kg			
Analyte	Result	PQL	SPK value	SPK Ref Val	%REC	LowLimit	HighLimit	%RPD	RPDLimit	Qual
Gasoline Range Organics (GRO)	ND	5.0								
Surr: BFB	960		1,000		95.6	69.7	121			

Sample ID	LCS-1139	SampType:	LCS	TestCode:	EPA Method 8015B: Gasoline Range					
Client ID:	LCSS	Batch ID:	1139	RunNo:	1635					
Prep Date:	3/19/2012	Analysis Date:	3/23/2012	SeqNo:	46851	Units:	mg/Kg			
Analyte	Result	PQL	SPK value	SPK Ref Val	%REC	LowLimit	HighLimit	%RPD	RPDLimit	Qual
Gasoline Range Organics (GRO)	27	5.0	25.00	0	108	98.5	133			
Surr: BFB	1,000		1,000		103	69.7	121			

Qualifiers:

* / X Value exceeds Maximum Contaminant Level.
E Value above quantitation range
J Analyte detected below quantitation limits
R RPD outside accepted recovery limits

B Analyte detected in the associated Method Blank
H Holding times for preparation or analysis exceeded
ND Not Detected at the Reporting Limit
RL Reporting Detection Limit

QC SUMMARY REPORT

Hall Environmental Analysis Laboratory, Inc.

WO#: 1203644

28-Mar-12

Client: Animas Environmental Services

Project: Enterprise K-31

Sample ID	MB-1137		SampType:	MBLK		TestCode:	EPA Method 8021B: Volatiles			
Client ID:	PBS		Batch ID:	1137		RunNo:	1567			
Prep Date:	3/19/2012		Analysis Date:	3/20/2012		SeqNo:	43999		Units: mg/Kg	
Analyte	Result	PQL	SPK value	SPK Ref Val	%REC	LowLimit	HighLimit	%RPD	RPDLimit	Qual
Benzene	ND	0.050								
Toluene	ND	0.050								
Ethylbenzene	ND	0.050								
Xylenes, Total	ND	0.10								
Surr: 4-Bromofluorobenzene	0.97		1.000		96.8	80	120			

Sample ID	LCS-1137		SampType:	LCS		TestCode:	EPA Method 8021B: Volatiles			
Client ID:	LCSS		Batch ID:	1137		RunNo:	1567			
Prep Date:	3/19/2012		Analysis Date:	3/20/2012		SeqNo:	44000		Units: mg/Kg	
Analyte	Result	PQL	SPK value	SPK Ref Val	%REC	LowLimit	HighLimit	%RPD	RPDLimit	Qual
Benzene	0.92	0.050	1.000	0	91.6	83.3	107			
Toluene	0.93	0.050	1.000	0	92.8	74.3	115			
Ethylbenzene	0.94	0.050	1.000	0	93.7	80.9	122			
Xylenes, Total	2.8	0.10	3.000	0	93.1	85.2	123			
Surr: 4-Bromofluorobenzene	0.99		1.000		99.3	80	120			

Sample ID	1203640-002AMS		SampType:	MS		TestCode:	EPA Method 8021B: Volatiles			
Client ID:	BatchQC		Batch ID:	1137		RunNo:	1567			
Prep Date:	3/19/2012		Analysis Date:	3/21/2012		SeqNo:	44456		Units: mg/Kg	
Analyte	Result	PQL	SPK value	SPK Ref Val	%REC	LowLimit	HighLimit	%RPD	RPDLimit	Qual
Benzene	0.94	0.050	0.9960	0	94.9	67.2	113			
Toluene	0.98	0.050	0.9960	0	98.4	62.1	116			
Ethylbenzene	0.99	0.050	0.9960	0	99.7	67.9	127			
Xylenes, Total	3.0	0.10	2.988	0	99.2	60.6	134			
Surr: 4-Bromofluorobenzene	1.0		0.9960		102	80	120			

Sample ID	1203640-002AMSD		SampType:	MSD		TestCode:	EPA Method 8021B: Volatiles			
Client ID:	BatchQC		Batch ID:	1137		RunNo:	1567			
Prep Date:	3/19/2012		Analysis Date:	3/21/2012		SeqNo:	44457		Units: mg/Kg	
Analyte	Result	PQL	SPK value	SPK Ref Val	%REC	LowLimit	HighLimit	%RPD	RPDLimit	Qual
Benzene	0.94	0.050	0.9911	0	94.9	67.2	113	0.420	14.3	
Toluene	0.97	0.050	0.9911	0	97.9	62.1	116	1.03	15.9	
Ethylbenzene	0.99	0.050	0.9911	0	99.8	67.9	127	0.425	14.4	
Xylenes, Total	3.0	0.099	2.973	0	99.8	60.6	134	0.156	12.6	
Surr: 4-Bromofluorobenzene	0.99		0.9911		100	80	120	0	0	

Qualifiers:

*/X Value exceeds Maximum Contaminant Level.

E Value above quantitation range

J Analyte detected below quantitation limits

R RPD outside accepted recovery limits

B Analyte detected in the associated Method Blank

H Holding times for preparation or analysis exceeded

ND Not Detected at the Reporting Limit

RL Reporting Detection Limit

QC SUMMARY REPORT

Hall Environmental Analysis Laboratory, Inc.

WO#: 1203644

28-Mar-12

Client: Animas Environmental Services

Project: Enterprise K-31

Sample ID	MB-1139		SampType:	MBLK		TestCode:	EPA Method 8021B: Volatiles			
Client ID:	PBS		Batch ID:	1139		RunNo:	1627			
Prep Date:	3/19/2012		Analysis Date:	3/23/2012		SeqNo:	46195		Units: mg/Kg	
Analyte	Result	PQL	SPK value	SPK Ref Val	%REC	LowLimit	HighLimit	%RPD	RPDLimit	Qual
Benzene	ND	0.050								
Toluene	ND	0.050								
Ethylbenzene	ND	0.050								
Xylenes, Total	ND	0.10								
Surr: 4-Bromofluorobenzene	0.97		1.000		96.8	80	120			

Sample ID	LCS-1139		SampType:	LCS		TestCode:	EPA Method 8021B: Volatiles			
Client ID:	LCSS		Batch ID:	1139		RunNo:	1627			
Prep Date:	3/19/2012		Analysis Date:	3/23/2012		SeqNo:	46196		Units: mg/Kg	
Analyte	Result	PQL	SPK value	SPK Ref Val	%REC	LowLimit	HighLimit	%RPD	RPDLimit	Qual
Benzene	0.96	0.050	1.000	0	96.4	83.3	107			
Toluene	0.97	0.050	1.000	0	96.9	74.3	115			
Ethylbenzene	0.97	0.050	1.000	0	96.9	80.9	122			
Xylenes, Total	2.9	0.10	3.000	0	96.9	85.2	123			
Surr: 4-Bromofluorobenzene	1.0		1.000		100	80	120			

Sample ID	1203644-013AMS		SampType:	MS		TestCode:	EPA Method 8021B: Volatiles			
Client ID:	SB-5 @ 4'		Batch ID:	1139		RunNo:	1627			
Prep Date:	3/19/2012		Analysis Date:	3/22/2012		SeqNo:	46233		Units: mg/Kg	
Analyte	Result	PQL	SPK value	SPK Ref Val	%REC	LowLimit	HighLimit	%RPD	RPDLimit	Qual
Benzene	0.72	0.048	0.9533	0.03266	72.2	67.2	113			
Toluene	0.77	0.048	0.9533	0	80.6	62.1	116			
Ethylbenzene	0.82	0.048	0.9533	0.02970	83.1	67.9	127			
Xylenes, Total	2.7	0.095	2.860	0.2693	83.9	60.6	134			
Surr: 4-Bromofluorobenzene	0.95		0.9533		99.7	80	120			

Sample ID	1203644-013AMSD		SampType:	MSD		TestCode:	EPA Method 8021B: Volatiles			
Client ID:	SB-5 @ 4'		Batch ID:	1139		RunNo:	1627			
Prep Date:	3/19/2012		Analysis Date:	3/22/2012		SeqNo:	46234		Units: mg/Kg	
Analyte	Result	PQL	SPK value	SPK Ref Val	%REC	LowLimit	HighLimit	%RPD	RPDLimit	Qual
Benzene	0.84	0.049	0.9862	0.03266	82.1	67.2	113	15.5	14.3	R
Toluene	0.83	0.049	0.9862	0	84.7	62.1	116	8.25	15.9	
Ethylbenzene	0.85	0.049	0.9862	0.02970	83.5	67.9	127	3.70	14.4	
Xylenes, Total	2.7	0.099	2.959	0.2693	83.2	60.6	134	2.29	12.6	
Surr: 4-Bromofluorobenzene	0.96		0.9862		97.6	80	120	0	0	

Qualifiers:

* / X Value exceeds Maximum Contaminant Level.
E Value above quantitation range
J Analyte detected below quantitation limits
R RPD outside accepted recovery limits

B Analyte detected in the associated Method Blank
H Holding times for preparation or analysis exceeded
ND Not Detected at the Reporting Limit
RL Reporting Detection Limit

QC SUMMARY REPORT

Hall Environmental Analysis Laboratory, Inc.

WO#: 1203644

28-Mar-12

Client: Animas Environmental Services

Project: Enterprise K-31

Sample ID	5ML RB	SampType:	MBLK	TestCode:	EPA Method 8021B: Volatiles					
Client ID:	PBW	Batch ID:	R1628	RunNo:	1628					
Prep Date:		Analysis Date:	3/22/2012	SeqNo:	46269	Units:	µg/L			
Analyte	Result	PQL	SPK value	SPK Ref Val	%REC	LowLimit	HighLimit	%RPD	RPDLimit	Qual
Benzene	ND	1.0								
Toluene	ND	1.0								
Ethylbenzene	ND	1.0								
Xylenes, Total	ND	2.0								
Surr: 4-Bromofluorobenzene	19		20.00		94.3	55	140			

Sample ID	100NG BTEX LCS	SampType:	LCS	TestCode:	EPA Method 8021B: Volatiles					
Client ID:	LCSW	Batch ID:	R1628	RunNo:	1628					
Prep Date:		Analysis Date:	3/22/2012	SeqNo:	46272	Units:	µg/L			
Analyte	Result	PQL	SPK value	SPK Ref Val	%REC	LowLimit	HighLimit	%RPD	RPDLimit	Qual
Benzene	21	1.0	20.00	0	106	80	120			
Toluene	22	1.0	20.00	0	112	80	120			
Ethylbenzene	22	1.0	20.00	0	110	80	120			
Xylenes, Total	66	2.0	60.00	0	110	80	120			
Surr: 4-Bromofluorobenzene	20		20.00		102	55	140			

Sample ID	1203644-010AMS	SampType:	MS	TestCode:	EPA Method 8021B: Volatiles					
Client ID:	SB-2	Batch ID:	R1628	RunNo:	1628					
Prep Date:		Analysis Date:	3/22/2012	SeqNo:	46294	Units:	µg/L			
Analyte	Result	PQL	SPK value	SPK Ref Val	%REC	LowLimit	HighLimit	%RPD	RPDLimit	Qual
Benzene	55	2.0	40.00	46.08	22.3	70.1	118			S
Toluene	48	2.0	40.00	5.904	106	72.3	117			
Ethylbenzene	43	2.0	40.00	0.4480	106	73.5	117			
Xylenes, Total	130	4.0	120.0	1.820	107	73.1	119			
Surr: 4-Bromofluorobenzene	34		40.00		86.2	55	140			

Sample ID	1203644-010AMSD	SampType:	MSD	TestCode:	EPA Method 8021B: Volatiles					
Client ID:	SB-2	Batch ID:	R1628	RunNo:	1628					
Prep Date:		Analysis Date:	3/23/2012	SeqNo:	46296	Units:	µg/L			
Analyte	Result	PQL	SPK value	SPK Ref Val	%REC	LowLimit	HighLimit	%RPD	RPDLimit	Qual
Benzene	54	2.0	40.00	46.08	18.9	70.1	118	2.50	16.4	S
Toluene	47	2.0	40.00	5.904	104	72.3	117	1.78	13.9	
Ethylbenzene	43	2.0	40.00	0.4480	106	73.5	117	0.485	13.5	
Xylenes, Total	130	4.0	120.0	1.820	107	73.1	119	0.799	12.9	
Surr: 4-Bromofluorobenzene	43		40.00		107	55	140	0	0	

Qualifiers:

* / X Value exceeds Maximum Contaminant Level.
E Value above quantitation range
J Analyte detected below quantitation limits
R RPD outside accepted recovery limits

B Analyte detected in the associated Method Blank
H Holding times for preparation or analysis exceeded
ND Not Detected at the Reporting Limit
RL Reporting Detection Limit

QC SUMMARY REPORT

Hall Environmental Analysis Laboratory, Inc.

WO#: 1203644

28-Mar-12

Client: Animas Environmental Services

Project: Enterprise K-31

Sample ID	5ML RB	SampType:	MBLK	TestCode:	EPA Method 8021B: Volatiles					
Client ID:	PBW	Batch ID:	R1655	RunNo:	1655					
Prep Date:		Analysis Date:	3/23/2012	SeqNo:	46805	Units:	µg/L			
Analyte	Result	PQL	SPK value	SPK Ref Val	%REC	LowLimit	HighLimit	%RPD	RPDLimit	Qual
Benzene	ND	1.0								
Toluene	ND	1.0								
Ethylbenzene	ND	1.0								
Xylenes, Total	ND	2.0								
Surr: 4-Bromofluorobenzene	18		20.00		89.8	55	140			

Sample ID	100NG BTEX LCS	SampType:	LCS	TestCode:	EPA Method 8021B: Volatiles					
Client ID:	LCSW	Batch ID:	R1655	RunNo:	1655					
Prep Date:		Analysis Date:	3/23/2012	SeqNo:	46806	Units:	µg/L			
Analyte	Result	PQL	SPK value	SPK Ref Val	%REC	LowLimit	HighLimit	%RPD	RPDLimit	Qual
Benzene	21	1.0	20.00	0	106	80	120			
Toluene	22	1.0	20.00	0	111	80	120			
Ethylbenzene	22	1.0	20.00	0	111	80	120			
Xylenes, Total	66	2.0	60.00	0	110	80	120			
Surr: 4-Bromofluorobenzene	22		20.00		110	55	140			

Qualifiers:

* / X Value exceeds Maximum Contaminant Level.
E Value above quantitation range
J Analyte detected below quantitation limits
R RPD outside accepted recovery limits

B Analyte detected in the associated Method Blank
H Holding times for preparation or analysis exceeded
ND Not Detected at the Reporting Limit
RL Reporting Detection Limit



Hall Environmental Analysis Laboratory
4901 Hawkins NE
Albuquerque, NM 87106
TEL: 505-345-3975 FAX: 505-345-4107
Website: www.hallenvironmental.com

Sample Log-In Check List

Client Name: Animas Environmental

Work Order Number: 1203644

Received by/date: AF 03/17/12

Logged By: Anne Thorne

3/17/2012 10:30:00 AM

Anne Thorne

Completed By: Anne Thorne

3/19/2012

Anne Thorne

Reviewed By: *[Signature]*

03/19/2012

Chain of Custody

1. Were seals intact? Yes ☒ No ☐ Not Present ☐
2. Is Chain of Custody complete? Yes ☒ No ☐ Not Present ☐
3. How was the sample delivered? Courier

Log In

4. Coolers are present? (see 19. for cooler specific information) Yes ☒ No ☐ NA ☐
5. Was an attempt made to cool the samples? Yes ☒ No ☐ NA ☐
6. Were all samples received at a temperature of $>0^{\circ}\text{C}$ to 6.0°C ? Yes ☒ No ☐ NA ☐
7. Sample(s) in proper container(s)? Yes ☒ No ☐
8. Sufficient sample volume for indicated test(s)? Yes ☒ No ☐
9. Are samples (except VOA and ONG) properly preserved? Yes ☒ No ☐
10. Was preservative added to bottles? Yes ☐ No ☒ NA ☐
11. VOA vials have zero headspace? Yes ☐ No ☐ No VOA Vials ☒
12. Were any sample containers received broken? Yes ☐ No ☒
13. Does paperwork match bottle labels?
(Note discrepancies on chain of custody) Yes ☒ No ☐
14. Are matrices correctly identified on Chain of Custody? Yes ☒ No ☐
15. Is it clear what analyses were requested? Yes ☒ No ☐
16. Were all holding times able to be met?
(If no, notify customer for authorization.) Yes ☒ No ☐

of preserved
bottles checked
for pH:

(<2 or >12 unless noted)

Adjusted? _____

Checked by: _____

Special Handling (if applicable)

17. Was client notified of all discrepancies with this order? Yes ☐ No ☐ NA ☒

Person Notified: _____

Date: _____

By Whom: _____

Via: ☐ eMail ☐ Phone ☐ Fax ☐ In Person

Regarding: _____

Client Instructions: _____

18. Additional remarks:

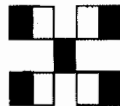
19. Cooler Information

Cooler No	Temp $^{\circ}\text{C}$	Condition	Seal Intact	Seal No	Seal Date	Signed By
1	5.2	Good	Yes			

Chain-of-Custody Record				
Client: <u>Ames Env. Services</u>				
Mailing Address: <u>624 E. Conacher</u>				
<u>Fremington, NM</u>				
Phone #: <u>505-564-2281</u>				
email or Fax#:				
QA/QC Package:				
<input checked="" type="checkbox"/> Standard <input type="checkbox"/> Level 4 (Full Validation)				
Accreditation				
<input type="checkbox"/> NELAP <input type="checkbox"/> Other _____				
<input type="checkbox"/> EDD (Type) _____				
Date	Time	Matrix	Sample Request ID	
15-12	1345	Sol	SB-1 e161	
	1348		SB-1 e141	
	1425		SB-2 e2-41	
	1434		SB-2 e121	
	1512		SB-3 e121	
	1514		SB-3 e141	
	1546		SB-4 e41	
	1547		SB-4 e141	
	1400	Water	SB-1	
	1442		SB-2	
	1525		SB-3	
	1600		SB-4	
Date:	Time:	Relinquished by:		
12/12	1657	<u>Thomas Long</u>		
Date:	Time:	Relinquished by:		
12/12	1732	<u>Thomas Long</u>		

Turn-Around Time:			
<input checked="" type="checkbox"/> Standard		<input type="checkbox"/> Rush	
Project Name: Enterprise			
K-31			
Project #:			
Project Manager:			
Ross Kanner			
Sampler: Thomas Long			
Office: 1000			
Sample:			
Container Type and #	Preservative Type	HEATING	
402 Jar	JeF		-001
			-002
			-003
			-004
			-005
			-006
			-007
			-008
340ml Vials	Hcl		-009
			-010
			-011
			-012
Received by:		Date	Time
Munster Woods		3/17/12	10:57
Received by:		Date	Time
Munster Woods		3/17/12	10:50

Chain-of-Custody Record			
Client: <u>Armos Env. Services</u>			
Mailing Address: <u>624 E. Conache</u>			
<u>Farmington, NM</u>			
Phone #: <u>505-564-2281</u>			
email or Fax#:			
QA/QC Package:			
<input checked="" type="checkbox"/> Standard <input type="checkbox"/> Level 4 (Full Validation)			
Accreditation			
<input type="checkbox"/> NELAP <input type="checkbox"/> Other _____			
<input type="checkbox"/> EDD (Type) _____			
Date	Time	Matrix	Sample Request ID
15-10	1345	Soil	SB-1 e161
	1348		SB-1 e141
	1425		SB-2 e2-41
	1434		SB-2 e121
	1512		SB-3 e121
	1514		SB-3 e141
	1546		SB-4 e41
	1547	Water	SB-4 e141
	1400	Water	SB-1
	1442		SB-2
	1505		SB-3
	1600		SB-4
Date:	Time:	Relinquished by:	
10/12	1657	<u>Armos Log</u>	
Date:	Time:	Relinquished by:	
10/12	1732	<u>Armos Log</u>	



HALL ENVIRONMENTAL ANALYSIS LABORATORY

4901 Hawkins NE - Albuquerque, NM 87109
Tel: 505-345-3975 Fax 505-345-4107
www.hallenvironmental.com

Analysis Request

[illegible]

Remarks: Bill To Enterprise

This series is online at the www.eia.doe.gov website. Any environmental data will be clearly indicated on the analytical report.

Chain-of-Custody Record

Client: Animas Env. Services

Mailing Address: 624 E. Comanche

Farmington NM

Phone #: 505-564-2281

email or Fax#:

QA/QC Package:

☒ Standard ☐ Level 4 (Full Validation)

Accreditation

☐ NELAP ☐ Other

☐ EDD (Type)

Project Manager:

Ross Kenner

Sampler:

Thomas Long

Office

Office

Container Type and #

40L Jar

Preservative Type

Ice

Sample Request ID

SB-11 e-10'

Date

3-16-12

Time

1300

Matrix

Soil

Time

1307

Matrix

Soil

Time

1339

Matrix

Soil

Time

1345

Matrix

Soil

Time

0925

Matrix

Water

Time

1000

Matrix

Soil

Time

1040

Matrix

Soil

Time

1108

Matrix

Soil

Time

1155

Matrix

Soil

Time

1243

Matrix

Soil

Time

1300

Matrix

Soil

Time

1355

Matrix

Soil

Time

1732

Matrix

Soil

Time

1732

Matrix

Soil

Time

1732

Matrix

Soil

Time

1732

Matrix

Soil

Time

1732

Matrix

Soil

Time

1732

Matrix

Soil

Time

1732

Matrix

Soil

Time

1732

Matrix

Soil

Time

1732

Matrix

Soil

Time

1732

Matrix

Soil

Time

1732

Matrix

Soil

Time

1732

Matrix

Soil

Time

1732

Matrix

Soil

Time

1732

Matrix

Soil

Time

1732

Matrix

Soil

Time

1732

Matrix

Soil

Time

1732

Matrix

Soil

Time

1732

Matrix

Soil

Time

1732

Matrix

Soil

Time

1732

Matrix

Soil

Time

1732

Matrix

Soil

Time

1732

Matrix

Soil

Time

1732

Matrix

Soil

Time

1732

Matrix

Soil

Time

1732

Matrix

Soil

Time

1732

Matrix

Soil

Time

1732

Matrix

Soil

Time

1732

Matrix

Soil

Time

1732

Matrix

Soil

Time

1732

Matrix

Soil

Time

1732

Matrix

Soil

Time

1732

Matrix

Soil

Time

1732

Matrix

Soil

Time

1732

Matrix

Soil

Time

1732

Matrix

Soil

Time

1732

Matrix

Soil

Time

1732

Matrix

Soil

Time

1732

Matrix

Soil

Time

1732

Matrix

Soil

Time

1732

Matrix

Soil

Time

1732

Matrix

Soil

Time

1732

Matrix

Soil

Time

1732

Matrix

Soil

Time

1732

Matrix

Soil

Time

1732

Matrix

Soil

Time

1732

Matrix

Soil

Time

1732

Matrix

Soil

Time

1732

Matrix

Soil

Time

1732

Matrix

Soil

Time

1732

Matrix

Soil

Time

1732

Matrix

Soil

Time

1732

Matrix

Soil

Time

1732

Matrix

Soil

Time

1732

Matrix

Soil

Time

1732

Matrix

Soil

Time

1732

Matrix

Soil

Time

1732

Matrix