

Gas Pipelined to Sales Meter Canada CDP meter #742674-00

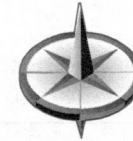
## Prince Rupert Federal #1

Prince Rupert Federal Wells  
NMNM-131580  
#1 30-005-64222  
#2 30-005-64223  
3H 30-005-64241

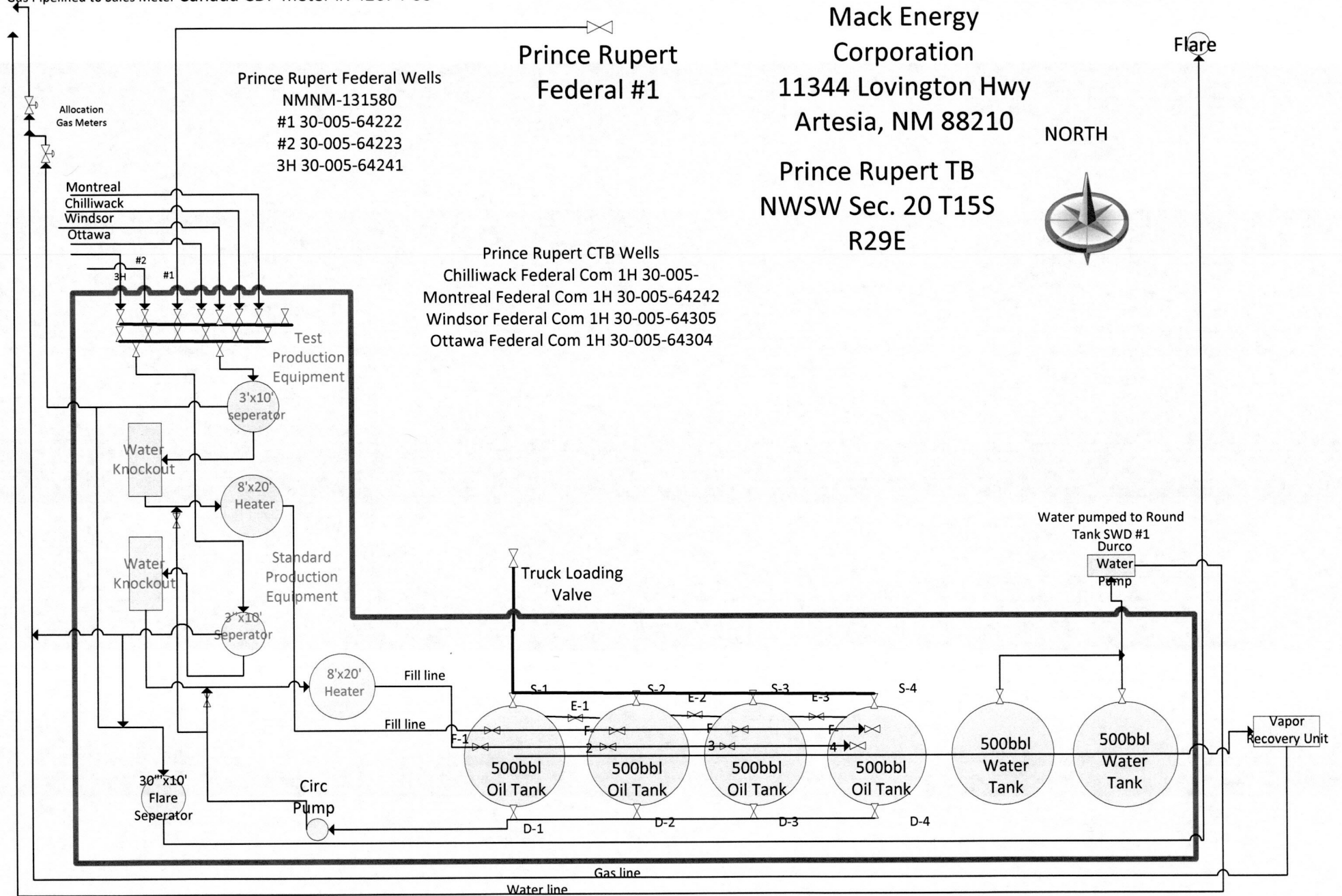
Mack Energy  
Corporation  
11344 Lovington Hwy  
Artesia, NM 88210

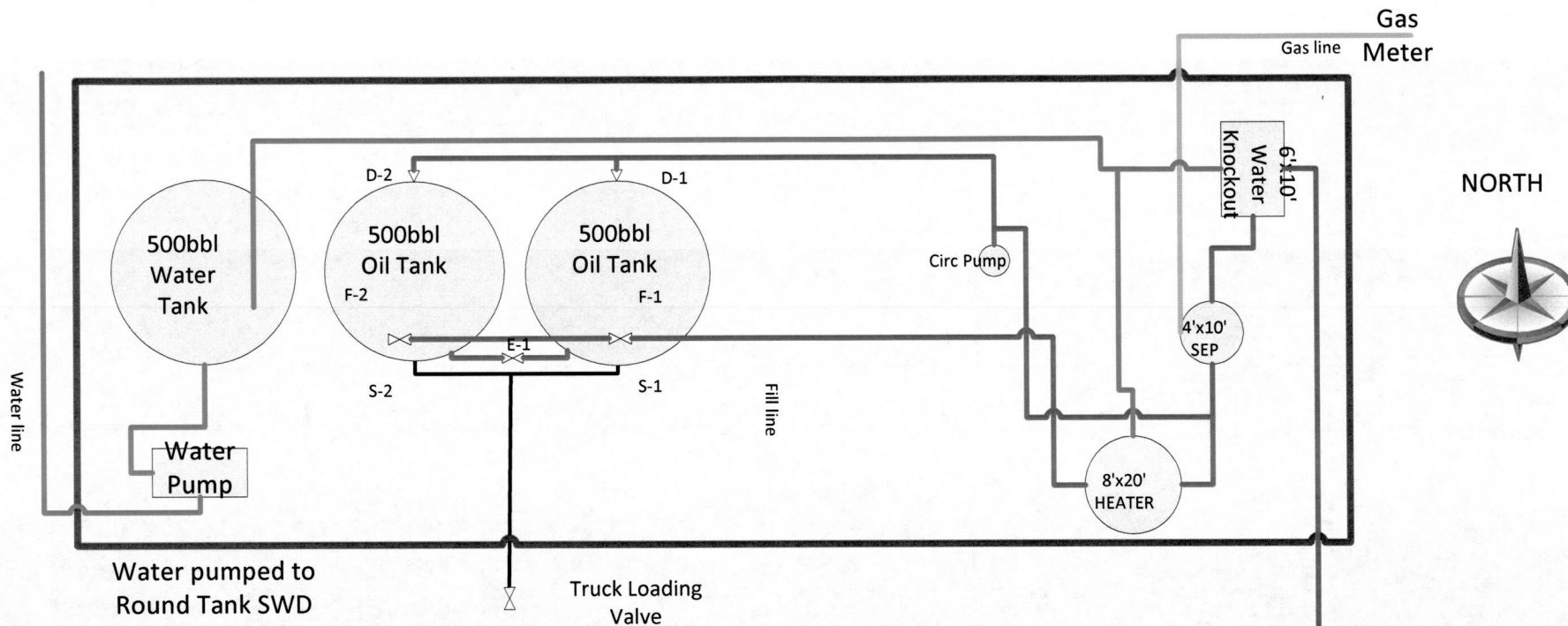
Prince Rupert TB  
NWSW Sec. 20 T15S  
R29E

NORTH



Prince Rupert CTB Wells  
Chilliwack Federal Com 1H 30-005-  
Montreal Federal Com 1H 30-005-64242  
Windsor Federal Com 1H 30-005-64305  
Ottawa Federal Com 1H 30-005-64304





#### Production Phase

Tank 1	Tank 2
F-1 Open	F-1 Closed
F-2 Closed	F-2 Open
E-1 Open	E-1 Open
D-1 Open	D-1 Closed
D-2 Closed	D-2 Open
S-1 Closed	S-1 Closed
S-2 Closed	S-2 Closed

#### Sales Phase

Tank 1	Tank 2
F-1 Closed	F-1 Open
F-2 Open	F-2 Closed
E-1 Closed	E-1 Closed
D-1 Closed	D-1 Open
D-2 Open	D-2 Closed
S-1 Open	S-1 Closed
S-2 Closed	S-2 Open

**Saskatoon Federal TB**  
**SWSE Sec. 18 T15S R29E**  
**Lease NMNM101107**

**Mack Energy Corporation**  
**11344 Lovington Hwy**  
**Artesia, NM 88210**

**Saskatoon**  
**Federal Com**  
**1H**

# Sales Phase

Tank 1  
F-1 Closed  
F-2 Closed  
F-3 Open  
E-1 Closed  
E-2 Open  
D-1 Closed  
D-2 Closed  
D-3 Open  
S-1 Open  
S-2 Closed  
S-3 Closed

Tank 2  
F-1 Closed  
F-2 Closed  
F-3 Closed  
E-1 Closed  
E-2 Open  
D-1 Closed  
D-2 Closed  
D-3 Closed  
S-1 Closed  
S-2 Open  
S-3 Closed

Tank 3  
F-1 Open  
F-2 Closed  
F-3 Closed  
E-1 Open  
E-2 Closed  
D-1 Open  
D-2 Closed  
D-3 Closed  
S-1 Closed  
S-2 Closed  
S-3 Open

NORTH



Mack Energy Corporation  
11344 Lovington Hwy  
Artesia, NM 88210

Victoria  
Federal 1

Victoria Federal TB  
SWSW Sec. 19 T15S R29E  
Lease NMNM4433

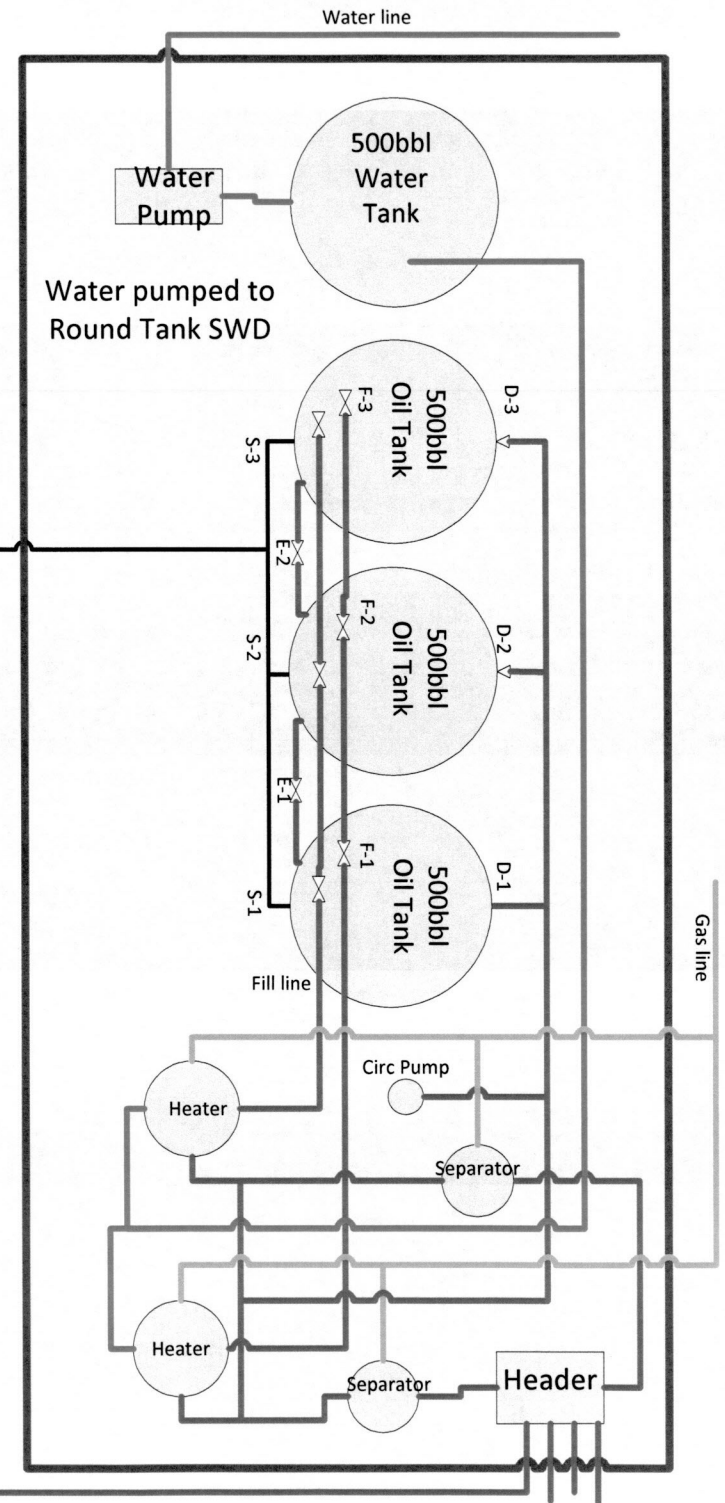
# Production Phase

Tank 1  
F-1 Open  
F-2 Closed  
F-3 Closed  
E-1 Open  
E-2 Closed  
D-1 Open  
D-2 Closed  
D-3 Closed  
S-1 Closed  
S-2 Closed  
S-3 Closed

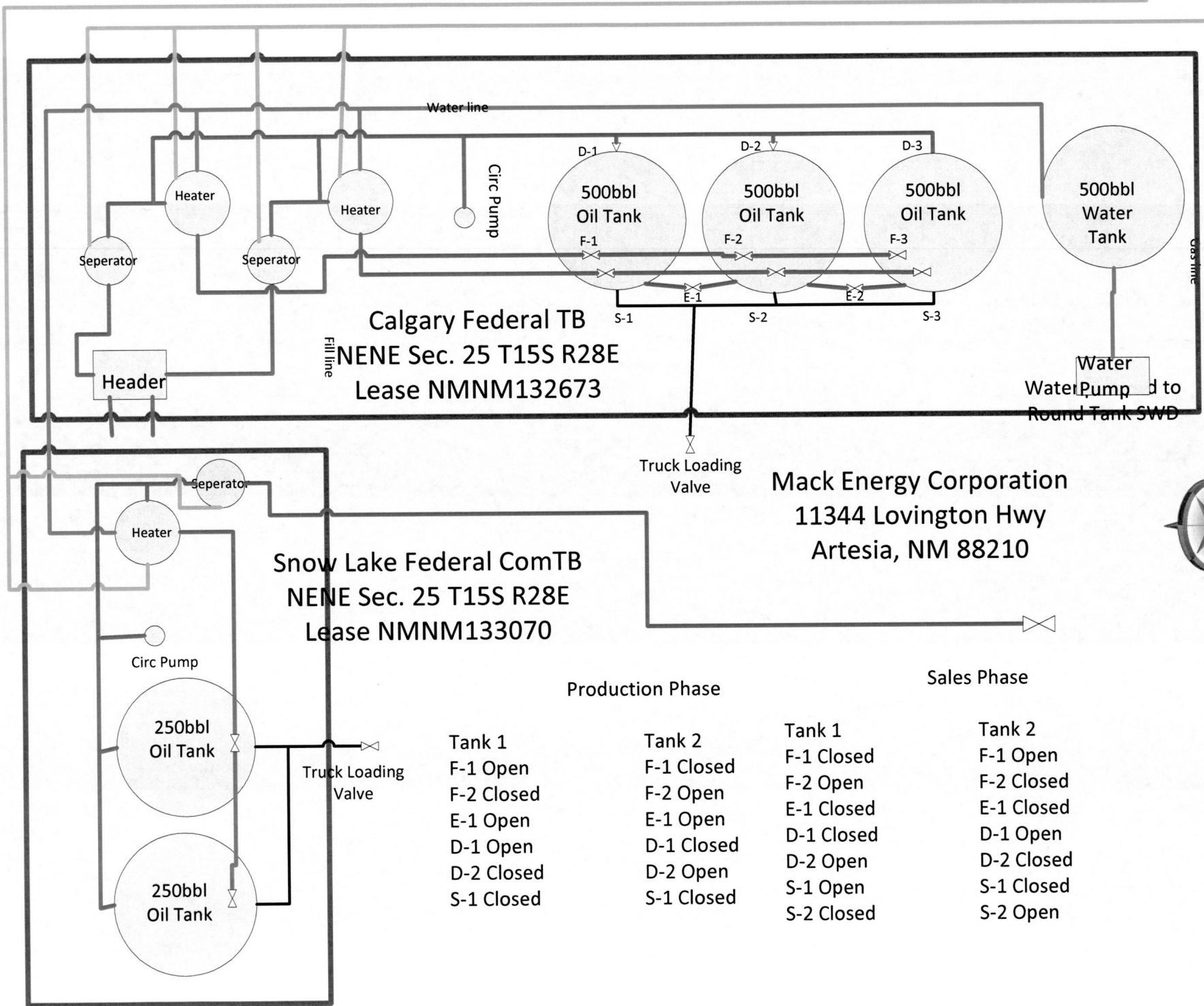
Tank 2  
F-1 Closed  
F-2 Open  
F-3 Closed  
E-1 Open  
E-2 Closed  
D-1 Closed  
D-2 Open  
D-3 Closed  
S-1 Closed  
S-2 Closed  
S-3 Closed

Tank 3  
F-1 Closed  
F-2 Closed  
F-3 Open  
E-1 Closed  
E-2 Open  
D-1 Closed  
D-2 Closed  
D-3 Open  
S-1 Closed  
S-2 Closed  
S-3 Closed

Truck Loading  
Valve



Gas Meter  
located in the  
SESW Sec. 19  
T15S R29E  
#727007



**Mack Energy Corporation**  
11344 Lovington Hwy  
Artesia, NM 88210





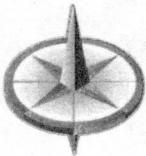
Production Phase

Tank 1	Tank 2
F-1 Open	F-1 Closed
F-2 Closed	F-2 Open
E-1 Open	E-1 Open
D-1 Open	D-1 Closed
D-2 Closed	D-2 Open
S-1 Closed	S-1 Closed
S-2 Closed	S-2 Closed

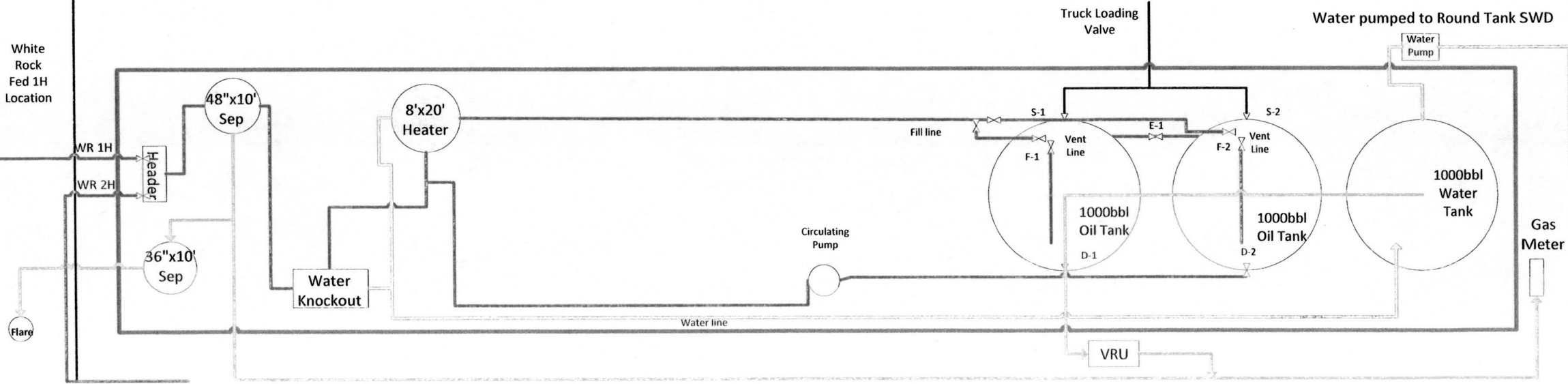
Sales Phase

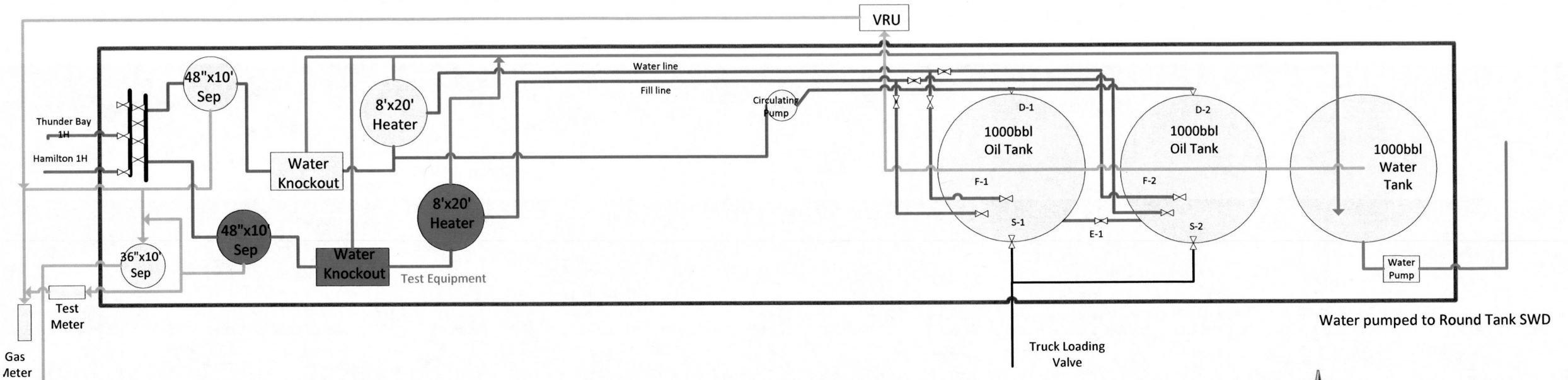
Tank 1	Tank 2
F-1 Closed	F-1 Open
F-2 Open	F-2 Closed
E-1 Closed	E-1 Closed
D-1 Closed	D-1 Open
D-2 Open	D-2 Closed
S-1 Open	S-1 Closed
S-2 Closed	S-2 Open

Mack Energy Corporation  
PO Box 960 Artesia, NM 88211-0960  
White Rock Federal CTB  
NWNW Sec. 28 T15S R29E



White  
Rock  
Fed 1H  
Location





Thunder Bay Federal 1H 30-005-64308  
Hamilton Federal 1H 30-005-64307

#### Production Phase

Tank 1	Tank 2
F-1 Open	F-1 Closed
F-2 Closed	F-2 Open
E-1 Open	E-1 Open
D-1 Open	D-1 Closed
D-2 Closed	D-2 Open
S-1 Closed	S-1 Closed
S-2 Closed	S-2 Closed

Mack Energy Corporation  
PO Box 960 Artesia, NM 88211-0960  
Thunder Bay Federal CTB  
SWSW Sec. 22 T15S R29E

#### Sales Phase

Tank 1	Tank 2
F-1 Closed	F-1 Open
F-2 Open	F-2 Closed
E-1 Closed	E-1 Closed
D-1 Closed	D-1 Open
D-2 Open	D-2 Closed
S-1 Open	S-1 Closed
S-2 Closed	S-2 Open