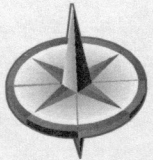


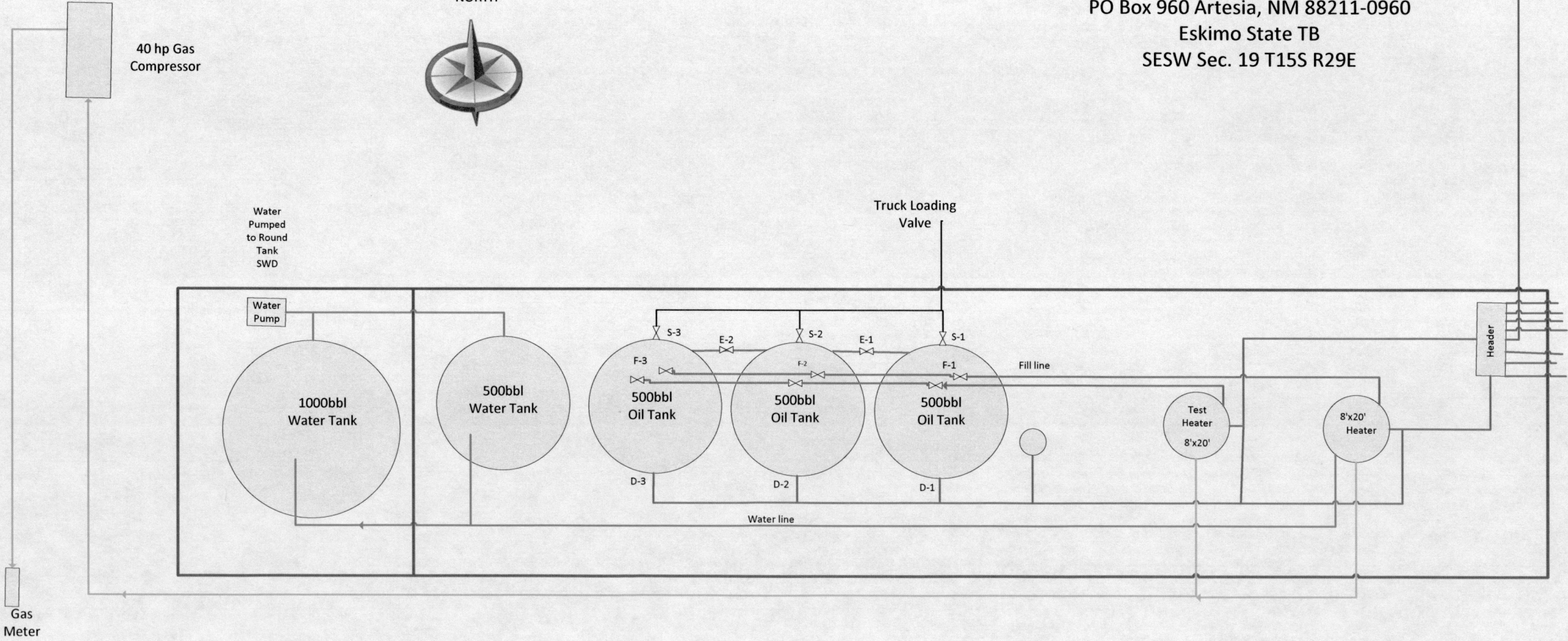
Eskimo State #1

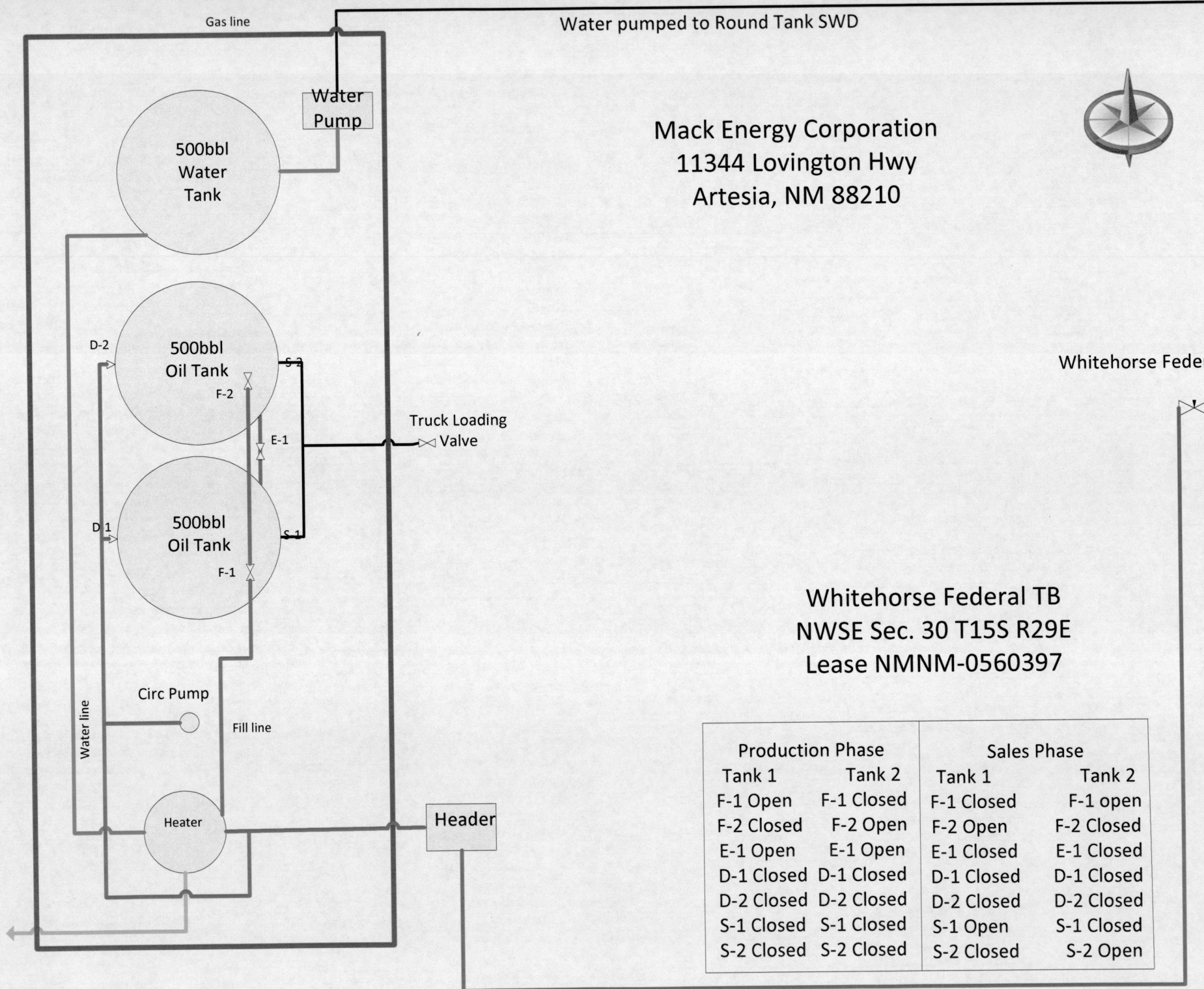


NORTH

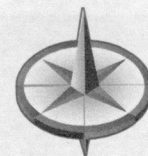


Mack Energy Corporation
PO Box 960 Artesia, NM 88211-0960
Eskimo State TB
SESW Sec. 19 T15S R29E





Mack Energy Corporation
11344 Lovington Hwy
Artesia, NM 88210



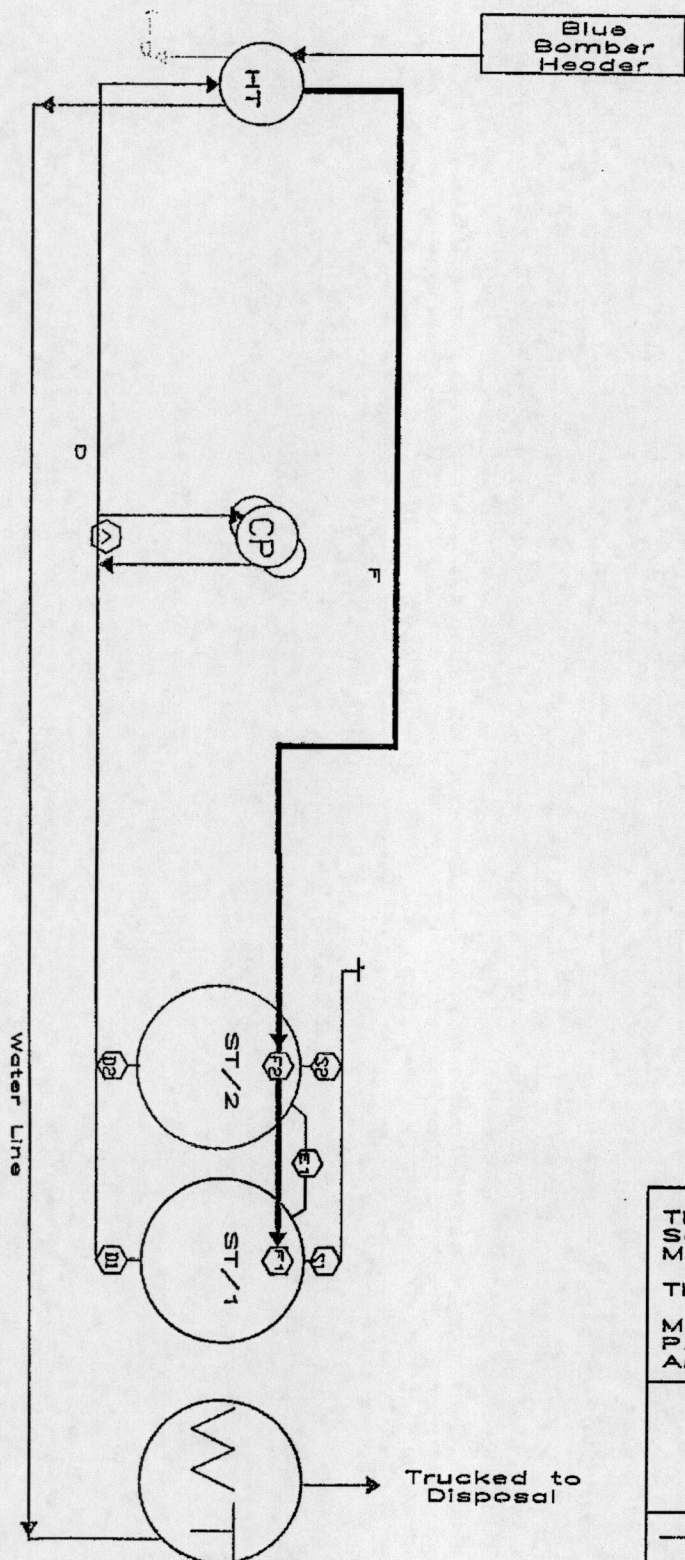
Whitehorse Federal #1

Whitehorse Federal TB
NWSE Sec. 30 T15S R29E
Lease NMNM-0560397

Production Phase		Sales Phase	
Tank 1	Tank 2	Tank 1	Tank 2
F-1 Open	F-1 Closed	F-1 Closed	F-1 open
F-2 Closed	F-2 Open	F-2 Open	F-2 Closed
E-1 Open	E-1 Open	E-1 Closed	E-1 Closed
D-1 Closed	D-1 Closed	D-1 Closed	D-1 Closed
D-2 Closed	D-2 Closed	D-2 Closed	D-2 Closed
S-1 Closed	S-1 Closed	S-1 Open	S-1 Closed
S-2 Closed	S-2 Closed	S-2 Closed	S-2 Open

MACK

Energy Corporation



Production Phase

Packers Battery			
S/T 1		S/T 2	
F1	Open	F1	Closed
D1	Open	D1	Closed
SD1	Open	SD1	Open
SD2	Open	SD2	Open
SD3	Open	SD3	Open
SD4	Open	SD4	Open
SD5	Open	SD5	Open
SD6	Open	SD6	Open
SD7	Open	SD7	Open
SD8	Open	SD8	Open
SD9	Open	SD9	Open
SD10	Open	SD10	Open
SD11	Open	SD11	Open
SD12	Open	SD12	Open
SD13	Open	SD13	Open
SD14	Open	SD14	Open
SD15	Open	SD15	Open
SD16	Open	SD16	Open
SD17	Open	SD17	Open
SD18	Open	SD18	Open
SD19	Open	SD19	Open
SD20	Open	SD20	Open
SD21	Open	SD21	Open
SD22	Open	SD22	Open
SD23	Open	SD23	Open
SD24	Open	SD24	Open
SD25	Open	SD25	Open
SD26	Open	SD26	Open
SD27	Open	SD27	Open
SD28	Open	SD28	Open
SD29	Open	SD29	Open
SD30	Open	SD30	Open
SD31	Open	SD31	Open
SD32	Open	SD32	Open
SD33	Open	SD33	Open
SD34	Open	SD34	Open
SD35	Open	SD35	Open
SD36	Open	SD36	Open
SD37	Open	SD37	Open
SD38	Open	SD38	Open
SD39	Open	SD39	Open
SD40	Open	SD40	Open
SD41	Open	SD41	Open
SD42	Open	SD42	Open
SD43	Open	SD43	Open
SD44	Open	SD44	Open
SD45	Open	SD45	Open
SD46	Open	SD46	Open
SD47	Open	SD47	Open
SD48	Open	SD48	Open
SD49	Open	SD49	Open
SD50	Open	SD50	Open
SD51	Open	SD51	Open
SD52	Open	SD52	Open
SD53	Open	SD53	Open
SD54	Open	SD54	Open
SD55	Open	SD55	Open
SD56	Open	SD56	Open
SD57	Open	SD57	Open
SD58	Open	SD58	Open
SD59	Open	SD59	Open
SD60	Open	SD60	Open
SD61	Open	SD61	Open
SD62	Open	SD62	Open
SD63	Open	SD63	Open
SD64	Open	SD64	Open
SD65	Open	SD65	Open
SD66	Open	SD66	Open
SD67	Open	SD67	Open
SD68	Open	SD68	Open
SD69	Open	SD69	Open
SD70	Open	SD70	Open
SD71	Open	SD71	Open
SD72	Open	SD72	Open
SD73	Open	SD73	Open
SD74	Open	SD74	Open
SD75	Open	SD75	Open
SD76	Open	SD76	Open
SD77	Open	SD77	Open
SD78	Open	SD78	Open
SD79	Open	SD79	Open
SD80	Open	SD80	Open
SD81	Open	SD81	Open
SD82	Open	SD82	Open
SD83	Open	SD83	Open
SD84	Open	SD84	Open
SD85	Open	SD85	Open
SD86	Open	SD86	Open
SD87	Open	SD87	Open
SD88	Open	SD88	Open
SD89	Open	SD89	Open
SD90	Open	SD90	Open
SD91	Open	SD91	Open
SD92	Open	SD92	Open
SD93	Open	SD93	Open
SD94	Open	SD94	Open
SD95	Open	SD95	Open
SD96	Open	SD96	Open
SD97	Open	SD97	Open
SD98	Open	SD98	Open
SD99	Open	SD99	Open
SD100	Open	SD100	Open

Sales Phase

Packers Battery			
S/T 1		S/T 2	
F1	Closed	F1	Open
D1	Closed	D1	Open
SD1	Closed	SD1	Closed
SD2	Open	SD2	Closed
SD3	Open	SD3	Closed
SD4	Open	SD4	Closed
SD5	Open	SD5	Closed
SD6	Open	SD6	Closed
SD7	Open	SD7	Closed
SD8	Open	SD8	Closed
SD9	Open	SD9	Closed
SD10	Open	SD10	Closed
SD11	Open	SD11	Closed
SD12	Open	SD12	Closed
SD13	Open	SD13	Closed
SD14	Open	SD14	Closed
SD15	Open	SD15	Closed
SD16	Open	SD16	Closed
SD17	Open	SD17	Closed
SD18	Open	SD18	Closed
SD19	Open	SD19	Closed
SD20	Open	SD20	Closed
SD21	Open	SD21	Closed
SD22	Open	SD22	Closed
SD23	Open	SD23	Closed
SD24	Open	SD24	Closed
SD25	Open	SD25	Closed
SD26	Open	SD26	Closed
SD27	Open	SD27	Closed
SD28	Open	SD28	Closed
SD29	Open	SD29	Closed
SD30	Open	SD30	Closed
SD31	Open	SD31	Closed
SD32	Open	SD32	Closed
SD33	Open	SD33	Closed
SD34	Open	SD34	Closed
SD35	Open	SD35	Closed
SD36	Open	SD36	Closed
SD37	Open	SD37	Closed
SD38	Open	SD38	Closed
SD39	Open	SD39	Closed
SD40	Open	SD40	Closed
SD41	Open	SD41	Closed
SD42	Open	SD42	Closed
SD43	Open	SD43	Closed
SD44	Open	SD44	Closed
SD45	Open	SD45	Closed
SD46	Open	SD46	Closed
SD47	Open	SD47	Closed
SD48	Open	SD48	Closed
SD49	Open	SD49	Closed
SD50	Open	SD50	Closed
SD51	Open	SD51	Closed
SD52	Open	SD52	Closed
SD53	Open	SD53	Closed
SD54	Open	SD54	Closed
SD55	Open	SD55	Closed
SD56	Open	SD56	Closed
SD57	Open	SD57	Closed
SD58	Open	SD58	Closed
SD59	Open	SD59	Closed
SD60	Open	SD60	Closed
SD61	Open	SD61	Closed
SD62	Open	SD62	Closed
SD63	Open	SD63	Closed
SD64	Open	SD64	Closed
SD65	Open	SD65	Closed
SD66	Open	SD66	Closed
SD67	Open	SD67	Closed
SD68	Open	SD68	Closed
SD69	Open	SD69	Closed
SD70	Open	SD70	Closed
SD71	Open	SD71	Closed
SD72	Open	SD72	Closed
SD73	Open	SD73	Closed
SD74	Open	SD74	Closed
SD75	Open	SD75	Closed
SD76	Open	SD76	Closed
SD77	Open	SD77	Closed
SD78	Open	SD78	Closed
SD79	Open	SD79	Closed
SD80	Open	SD80	Closed
SD81	Open	SD81	Closed
SD82	Open	SD82	Closed
SD83	Open	SD83	Closed
SD84	Open	SD84	Closed
SD85	Open	SD85	Closed
SD86	Open	SD86	Closed
SD87	Open	SD87	Closed
SD88	Open	SD88	Closed
SD89	Open	SD89	Closed
SD90	Open	SD90	Closed
SD91	Open	SD91	Closed
SD92	Open	SD92	Closed
SD93	Open	SD93	Closed
SD94	Open	SD94	Closed
SD95	Open	SD95	Closed
SD96	Open	SD96	Closed
SD97	Open	SD97	Closed
SD98	Open	SD98	Closed
SD99	Open	SD99	Closed
SD100	Open	SD100	Closed

This Lease is subject to the site Security plan for southeast New Mexico operations.

The Plan is Located at :

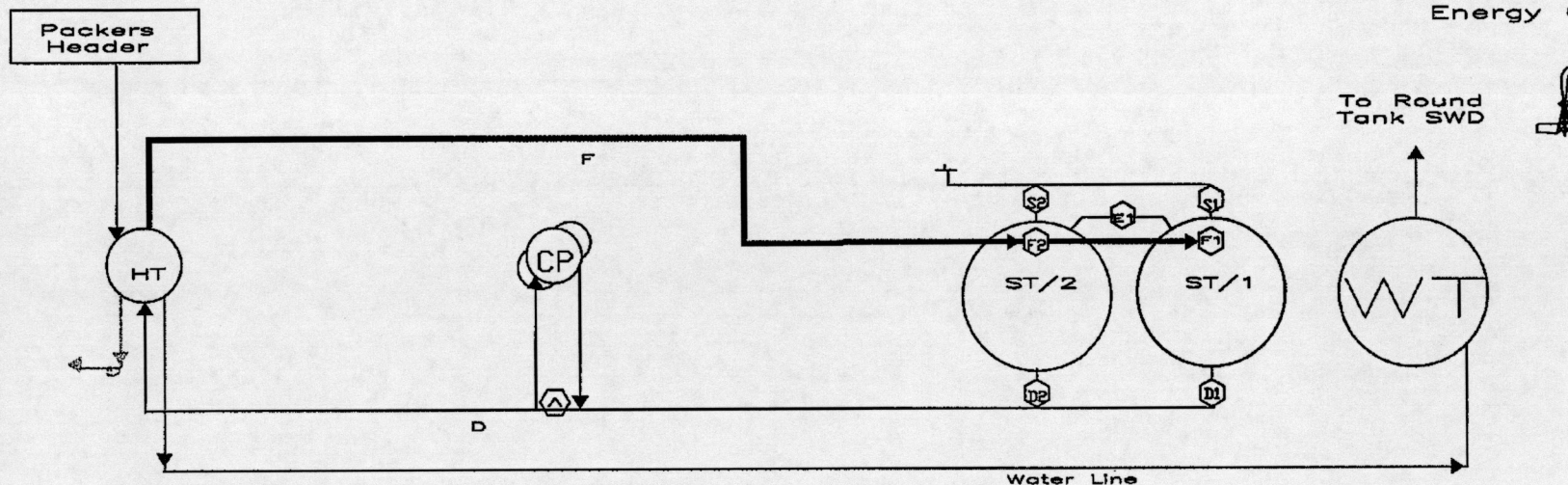
Mack Energy Corporation
P.O. Box 960
Artesia NM 88211-0960

Mack Energy Corporation
Blue Bomber Federal Tank Battery
NW/4 SE/4
Section 7 T15S R29E

Blue Bomber Lease

MACK

Energy Corporation



Production Phase

Packers Battery			
S/T 1		S/T 2	
F1	Open	F1	Closed
D1	Open	D1	Closed
S1	Open	S1	Open
T1	Closed	T1	Closed
D2	Closed	D2	Open
S2	Closed	S2	Open
T2	Closed	T2	Closed

Sales Phase

Packers Battery			
S/T 1		S/T 2	
F1	Closed	F1	Open
D1	Closed	D1	Open
S1	Closed	S1	Closed
T1	Open	T1	Closed
D2	Open	D2	Closed
S2	Open	S2	Closed
T2	Open	T2	Open

This Lease is subject to the site Security plan for southeast New Mexico operations.

The Plan is Located at :

Mack Energy Corporation
P.O. Box 960
Artesia NM 88211-0960

Mack Energy Corporation
Packers Federal Tank Battery
SE/4 NE/4
Section 29 T15S R29E

————— Packers Lease

Mack Energy Corporation
PO Box 960 Artesia, NM 88211-0960
Klondike State CTB
SENE Sec. 26 T15S R28E

