

PC Initial Application

Received: 06/27/19

This application is placed in file for record. It MAY or MAY NOT have been reviewed to be determined Administratively Complete

RECEIVED: 06/27/2019	REVIEWER: MAM	TYPE: PC	APP NO: pMAM1918254757
-----------------------------	----------------------	-----------------	-------------------------------

ABOVE THIS TABLE FOR OCD DIVISION USE ONLY

NEW MEXICO OIL CONSERVATION DIVISION
 - Geological & Engineering Bureau -
 1220 South St. Francis Drive, Santa Fe, NM 87505

**ADMINISTRATIVE APPLICATION CHECKLIST**

THIS CHECKLIST IS MANDATORY FOR ALL ADMINISTRATIVE APPLICATIONS FOR EXCEPTIONS TO DIVISION RULES AND
 REGULATIONS WHICH REQUIRE PROCESSING AT THE DIVISION LEVEL IN SANTA FE

Applicant: OXY USA INC **OGRID Number:** 16696
Well Name: HEIGHT CC 6 7 FEDERAL #031Y & MULTIPLE **API:** 30-015-45770 & MULTIPLE
Pool: PURPLE SAGE; WOLFCAMP & PIERCE CROSSING; BONE SPRING **Pool Code:** 98220 & 50371

**SUBMIT ACCURATE AND COMPLETE INFORMATION REQUIRED TO PROCESS THE TYPE OF APPLICATION
 INDICATED BELOW**

1) TYPE OF APPLICATION: Check those which apply for (A)**PC-1359**

A. Location - Spacing Unit - Simultaneous Dedication

☐ NSL☐ NSP (PROJECT AREA)☐ NSP (PRORATION UNIT)☐ SD

B. Check one only for (I) or (II)

(I) Commingling - Storage - Measurement

☐ DHC☐ CTB☐ PLC☒ PC☐ OLS☐ OLM

(II) Injection - Disposal - Pressure Increase - Enhanced Oil Recovery

☐ WFX☐ PMX☐ SWD☐ IPI☐ EOR☐ PPR**2) NOTIFICATION REQUIRED TO:** Check those which apply.A. ☒ Offset operators or lease holders → only w/ 10% E/2 were notified.B. ☐ Royalty, overriding royalty owners, revenue ownersC. ☐ Application requires published noticeD. ☐ Notification and/or concurrent approval by SLOE. ☒ Notification and/or concurrent approval by BLMF. ☐ Surface ownerG. ☐ For all of the above, proof of notification or publication is attached, and/or,H. ☒ No notice required → For pool commingling, notice was not required as w/ 10% E/2 are identical.**FOR OCD ONLY**☐ Notice Complete☐ Application
Content
Complete

3) CERTIFICATION: I hereby certify that the information submitted with this application for administrative approval is **accurate** and **complete** to the best of my knowledge. I also understand that **no action** will be taken on this application until the required information and notifications are submitted to the Division.

Note: Statement must be completed by an individual with managerial and/or supervisory capacity.

Kathleen Mowery
 Print or Type Name

6/27/2019
 Date

713-366-5109
 Phone Number

Kathleen Mowery
 Signature

Kathleen-Mowery@oxy.com
 e-mail Address

McMillan, Michael, EMNRD

From: Mowery, Kathleen S <Kathleen_Mowery@oxy.com>
Sent: Thursday, June 27, 2019 12:03 PM
To: McMillan, Michael, EMNRD
Subject: [EXT] Dimensions CTB - Pool Commingle & OLM
Attachments: NMOCD Submittal Packet (6.27.2019).pdf; NMOCD Well List - Dimensions.xlsx

Hi Mike,

OXY requests approval of the commingle application for the Dimensions CTB.

Attached are the following:

1. Commingle application including:
 - a. Admin checklist
 - b. C103
 - c. Write-up
 - d. Block flow diagram
 - e. Map
 - f. Notification/identical ownership documents
 - i. WI owner notification tracking numbers for OLM (E/2 wells only)
 - ii. Letter verifying identical ownership for each half section (one for the E/2 and one for the W/2)
 - g. C102s
2. Spreadsheet with wells, API, pool and pool code.
- h. Please note that there are two columns for the well names (Old Well Name and Well Name). There are three wells that are waiting for their name change to be updated in the NMOCD site. The current well name that is showing up on the NMOCD site is the Old Well Name and the new Well Name is what matches the C102 attached in the application.

Please let me know if you have any questions! This application is being sent via FedEx as well.

Thanks,
Kathleen Mowery
Regulatory Engineer
713-366-5109 (office) | 281-961-9955 (cell)

APPLICATION FOR POOL COMMINGLE & OFF-LEASE STORAGE, MEASUREMENT AND SALES

Commingling proposal for the Dimensions Battery

OXY USA INC respectfully requests approval of a pool commingle and off-lease storage, measurement and sales at the Dimensions CTB (Lat 32.250842, Long -104.025274). Width CC 6 7 Federal Com #017H, 016H, Height CC 6 7 Federal Com #031Y, 032H, 033H, 311H, Length CC 6 7 Federal Com #021H, 022H, 023H, and Width CC 6 7 Federal Com #011H will produce to Train #1 and require a pool commingle. Time CC 6 7 Federal Com #044H, Height CC 6 7 Federal Com #034H, 035H, 036H, 312H, Length CC 6 7 Federal Com #024H, 025H, 026H, Width CC 6 7 Federal Com #014H and #015H will produce to Train #2 and require a pool commingle and off-lease storage, measurement and sales. Production from the two Trains will be kept separate and not commingled.

POOL COMMINGLE - TRAIN #1

POOLS: PIERCE CROSSING;BONE SPRING (50371) & PURPLE SAGE; WOLFCAMP (98220)

COM AGREEMENT PENDING

18.75% BLM ROYALTY 12.5% (NMNM 013996) & 6.25% BLM ROYALTY 12.5% (NMNM 077018) & 75% FEE FOR BLM INTEREST ALLOCATION OF 3.125%

Well Name	API	Surface Location	Pool	POOL CODE	EST DATE ONLINE	Est. Oil (bpd)	Est. Gravity API	Est. Gas (MSCFD)	Est. BTU/cf	Est. Water (bpd)
Width CC 6 7 Federal Com #017H	30-015-45629	C-06-24S-29E	PIERCE CROSSING; BONE SPRING	50371	Nov-19	802	44	3207	1300	1203
Width CC 6 7 Federal Com #016H	30-015-45575	C-06-24S-29E	PIERCE CROSSING; BONE SPRING	50371	Nov-19	802	44	3207	1300	1203
Height CC 6 7 Federal Com #031Y	30-015-45770	D-06-24S-29E	PURPLE SAGE; WOLFCAMP	98220	Jul-19	795	44.4	1874	1325	3370
Height CC 6 7 Federal Com #032H	30-015-45554	D-06-24S-29E	PURPLE SAGE; WOLFCAMP	98220	Jul-19	795	44.4	1874	1325	3370
Height CC 6 7 Federal Com #033H	30-015-45561	C-06-24S-29E	PURPLE SAGE; WOLFCAMP	98220	Jul-19	795	44.4	1874	1325	3370
Length CC 6 7 Federal Com #021H	30-015-45553	D-06-24S-29E	PIERCE CROSSING; BONE SPRING	50371	Jul-19	991	44	2121	1300	2752
Length CC 6 7 Federal Com #022H	30-015-45565	D-06-24S-29E	PIERCE CROSSING; BONE SPRING	50371	Jul-19	991	44	2121	1300	2752
Length CC 6 7 Federal Com #023H	30-015-45551	C-06-24S-29E	PIERCE CROSSING; BONE SPRING	50371	Jul-19	991	44	2121	1300	2752
Width CC 6 7 Federal Com #011H	30-015-45571	C-06-24S-29E	PIERCE CROSSING; BONE SPRING	50371	Oct-20	802	44	3207	1300	1203
Height CC 6 7 Federal Com #311H	30-015-45630	C-06-24S-29E	PIERCE CROSSING; BONE SPRING	50371	Jul-19	795	44.4	1874	1325	3370

POOL COMMINGLE & OFF-LEASE STORAGE, MEASUREMENT AND SALES - TRAIN #2

POOLS: PIERCE CROSSING;BONE SPRING (50371) & PURPLE SAGE; WOLFCAMP (98220)

COM AGREEMENT PENDING

6.25% BLM ROYALTY 12.5% (NMNM077018) & 6.25% BLM ROYALTY 12.5% (NMNM 117551) & 12.5% BLM ROYALTY 12.5% (NMNM 086905) &

31.25% BLM ROYALTY 12.5% (NMLC 0065970 C) & 43.75% FEE FOR BLM INTEREST ALLOCATION OF 7.03125%

Well Name	API	Surface Location	Pool	POOL CODE	EST DATE ONLINE	Est. Oil (bpd)	Est. Gravity API	Est. Gas (MSCFD)	Est. BTU/cf	Est. Water (bpd)
Width CC 6 7 Federal Com #015H	30-015-45576	A-06-24S-29E	PIERCE CROSSING; BONE SPRING	50371	Nov-19	802	44	3207	1300	1203
Time CC 6 7 Federal Com #044H	30-015-45577	A-06-24S-29E	PURPLE SAGE; WOLFCAMP	98220	Oct-20	493	44.4	5479	1325	1644
Height CC 6 7 Federal Com #034H	30-015-45562	C-06-24S-29E	PURPLE SAGE; WOLFCAMP	98220	Jul-19	795	44.4	1874	1325	3370
Height CC 6 7 Federal Com #035H	30-015-45563	A-06-24S-29E	PURPLE SAGE; WOLFCAMP	98220	Jul-19	795	44.4	1874	1325	3370
Height CC 6 7 Federal Com #036H	30-015-45564	A-06-24S-29E	PURPLE SAGE; WOLFCAMP	98220	Jul-19	795	44.4	1874	1325	3370
Length CC 6 7 Federal Com #024H	30-015-45552	C-06-24S-29E	PIERCE CROSSING; BONE SPRING	50371	Jul-19	991	44	2121	1300	2752
Length CC 6 7 Federal Com #025H	30-015-45566	A-06-24S-29E	PIERCE CROSSING; BONE SPRING	50371	Jul-19	991	44	2121	1300	2752
Length CC 6 7 Federal Com #026H	30-015-45567	A-06-24S-29E	PIERCE CROSSING; BONE SPRING	50371	Jul-19	991	44	2121	1300	2752
Height CC 6 7 Federal Com #312H	30-015-45572	C-06-24S-29E	PIERCE CROSSING; BONE SPRING	50371	Jul-19	795	44.4	1874	1325	3370
Width CC 6 7 Federal Com #014H	30-015-45573	A-06-24S-29E	PIERCE CROSSING; BONE SPRING	50371	Nov-19	802	44	3207	1300	1203

Production estimates are average of first 6 month volumes

Process Description:

For each Facility Train, production is sent through a 10' X 40' three-phase production separator. Oil production flows through two line heaters then to an 8' X 20' heater treater before being sent to a 4' vapor recovery tower. It then flows to five oil storage tanks before being pumped through one of two LACT meters S/N*, which will serve as the FMP's for BLM royalty payments (Lat 32.250842 Long -104.025274). A truck load FMP will be set up at the Facility for use as back-up in the event of a LACT meter failure.

Oil and gas production will be allocated back to each well based on well test. For testing purposes, each Train will be equipped with three permanent 8' x 20' three-phase test separators. Each test vessel will be equipped with oil turbine meters (S/N*), gas orifice meters (S/N*) and water turbine meters. In addition, each Train is equipped to add up to three portable 6' X 20' three-phase test separators. Any portable test separator will be equipped with an oil turbine meter (S/N*), gas orifice meter (S/N*) and water turbine meter.

All wells will be tested daily prior to Range 1 of decline, and will be tested at least three times per month during Range 1 of decline. When Range 2 decline is started, the wells will be tested at least twice per month. Wells will be tested at least once per month when Range 3 of decline is started, as specified in Hearing Order R-14299.

*Meter number to be submitted upon installation. The oil and gas meters will be calibrated on a regular basis per API, NMOCD and BLM specifications.

Gas production from all wells at each Train will be combined after the production and test separators. It will then flow through an orifice meter S/N* (Lat 32.260919 Long -103.761808), which will serve as the gas FMP for that Train for the purpose of royalty payment, then sent to sales.

VRU gas will be allocated to each well using the theoretical oil volume from each individual well test.

All water from the Dimensions CTB will be sent to the Cedar Canyon Water Disposal System.

*Meter number to be submitted upon installation. The oil and gas meters will be calibrated on a regular basis per API, NMOCD and BLM specifications.

Additional Application Components:

The flow of production is shown in detail on the enclosed facility diagram. Also enclosed is a map detailing the lease boundaries, well and battery locations.

All wells in each train have identical ownership therefore notification was not required.

Pursuant to Statewide rule 19.15.12.10(C)(4)(g) OXY USA INC requests the option to include additional pools or leases within the defined parameters set forth in the Order for future additions.

Commingling this production is the most effective means of producing the reserves. The surface commingle application will be submitted separately for approval per NMOCD and BLM regulations.

OXY USA INC understands the requested approval will not constitute the granting of any right-of-way or construction rights not granted by the lease instrument.

No.	Train	Well Name	API
1	1	Width CC 6 7 Federal Com #017H	30-015-45629
2	1	Width CC 6 7 Federal Com #016H	30-015-45575
3	1	Height CC 6 7 Federal Com #031Y	30-015-45770
4	1	Height CC 6 7 Federal Com #032H	30-015-45554
5	1	Height CC 6 7 Federal Com #033H	30-015-45561
6	1	Length CC 6 7 Federal Com #021H	30-015-45553
7	1	Length CC 6 7 Federal Com #022H	30-015-45565
8	1	Length CC 6 7 Federal Com #023H	30-015-45551
9	1	Width CC 6 7 Federal Com #011H	30-015-45571
10	1	Height CC 6 7 Federal Com #111H	30-015-45630
11	2	Width CC 6 7 Federal Com #015H	30-015-45576
12	2	Time CC 6 7 Federal Com #014H	30-015-45577
13	2	Height CC 6 7 Federal Com #034H	30-015-45562
14	2	Height CC 6 7 Federal Com #035H	30-015-45563
15	2	Height CC 6 7 Federal Com #036H	30-015-45564
16	2	Length CC 6 7 Federal Com #024H	30-015-45552
17	2	Length CC 6 7 Federal Com #025H	30-015-45566
18	2	Length CC 6 7 Federal Com #026H	30-015-45567
19	2	Height CC 6 7 Federal Com #112H	30-015-45572
20	2	Width CC 6 7 Federal Com #014H	30-015-45573
21			
22			
23			
24			
25			

[illegible]

Table 3: Meter Details				
Meter ID	Meter S/N	FMP	Service	Type
GM1A	TBD	N	GAS	ORIFICE
GM1B	TBD	N	GAS	ORIFICE
GM1C	TBD	N	GAS	ORIFICE
GM1D	TBD	N	GAS	ORIFICE
GM1E	TBD	Y	GAS	ORIFICE
GM2A	TBD	N	GAS	ORIFICE
GM2B	TBD	Y	GAS	ORIFICE
GM2C	TBD	N	GAS	ORIFICE
GM2D	TBD	N	GAS	ORIFICE
GM2E	TBD	Y	GAS	ORIFICE
OM1A	TBD	N	OIL	TURBINE
OM1B	TBD	N	OIL	TURBINE
OM1C	TBD	N	OIL	TURBINE
OM1D	TBD	N	OIL	TURBINE
OM1E	TBD	Y	OIL	CORIOLIS
OM2A	TBD	N	OIL	TURBINE
OM2B	TBD	N	OIL	TURBINE
OM2C	TBD	N	OIL	TURBINE
OM2D	TBD	N	OIL	TURBINE
OM2E	TBD	Y	OIL	CORIOLIS
GM3	TBD	N	GAS	TURBINE
GM4	TBD	N	GAS	TURBINE
GM5	TBD	N	GAS	TURBINE
GM6	TBD	N	GAS	TURBINE
GM7	TBD	N	GAS	TURBINE
SGM1	TBD	N	GAS	TURBINE
GM8	TBD	N	GAS	TURBINE
GM9	TBD	N	GAS	TURBINE

[illegible][illegible]

Well No.	Gas Lift Meter S/N	Estimated Gas Lift Injected Volume (MCFED)
1	TBD	800-1000
2	TBD	800-1000
3	TBD	800-1000
4	TBD	800-1000
5	TBD	800-1000
6	TBD	800-1000
7	TBD	800-1000
8	TBD	800-1000
9	TBD	800-1000
10	TBD	800-1000
11	TBD	800-1000
12	TBD	800-1000
13	TBD	800-1000
14	TBD	800-1000
15	TBD	800-1000
16	TBD	800-1000
17	TBD	800-1000
18	TBD	800-1000
19	TBD	800-1000
20	TBD	800-1000

NOTES		LEGEND		AREA: NEW MEXICO, SOUTH WEST		OXY USA INC. - Permian Resources (Operator)	
1. OIL GAS METER	----->	WATER:	----->	-----	-----	ASSET	FACILITY
2. OIL GAS METER	----->	OIL:	----->	-----	-----	TYPE	
3. OIL GAS METER	----->	GAS:	----->	-----	-----	TYPE	CTB
4. SOUP SALES GAS METER	----->	MIX:	----->	-----	-----	TYPE	
5. SOUP SALES OIL METER	----->	RECYCLE:	----->	-----	-----	TYPE	CTB
6. OIL GAS METER	----->		----->	-----	-----	TYPE	
7. OIL GAS METER	----->		----->	-----	-----	TYPE	CTB
8. OIL GAS METER	----->		----->	-----	-----	TYPE	
9. OIL GAS METER	----->		----->	-----	-----	TYPE	CTB
10. OIL GAS METER	----->		----->	-----	-----	TYPE	
11. OIL GAS METER	----->		----->	-----	-----	TYPE	CTB
12. OIL GAS METER	----->		----->	-----	-----	TYPE	
13. OIL GAS METER	----->		----->	-----	-----	TYPE	CTB
14. OIL GAS METER	----->		----->	-----	-----	TYPE	
15. OIL GAS METER	----->		----->	-----	-----	TYPE	CTB
16. OIL GAS METER	----->		----->	-----	-----	TYPE	
17. OIL GAS METER	----->		----->	-----	-----	TYPE	CTB
18. OIL GAS METER	----->		----->	-----	-----	TYPE	
19. OIL GAS METER	----->		----->	-----	-----	TYPE	CTB
20. OIL GAS METER	----->		----->	-----	-----	TYPE	
21. OIL GAS METER	----->		----->	-----	-----	TYPE	CTB
22. OIL GAS METER	----->		----->	-----	-----	TYPE	
23. OIL GAS METER	----->		----->	-----	-----	TYPE	CTB
24. OIL GAS METER	----->		----->	-----	-----	TYPE	
25. OIL GAS METER	----->		----->	-----	-----	TYPE	CTB
26. OIL GAS METER	----->		----->	-----	-----	TYPE	
27. OIL GAS METER	----->		----->	-----	-----	TYPE	CTB
28. OIL GAS METER	----->		----->	-----	-----	TYPE	
29. OIL GAS METER	----->		----->	-----	-----	TYPE	CTB
30. OIL GAS METER	----->		----->	-----	-----	TYPE	
31. OIL GAS METER	----->		----->	-----	-----	TYPE	CTB
32. OIL GAS METER	----->		----->	-----	-----	TYPE	
33. OIL GAS METER	----->		----->	-----	-----	TYPE	CTB
34. OIL GAS METER	----->		----->	-----	-----	TYPE	
35. OIL GAS METER	----->		----->	-----	-----	TYPE	CTB
36. OIL GAS METER	----->		----->	-----	-----	TYPE	
37. OIL GAS METER	----->		----->	-----	-----	TYPE	CTB
38. OIL GAS METER	----->		----->	-----	-----	TYPE	
39. OIL GAS METER	----->		----->	-----	-----	TYPE	CTB
40. OIL GAS METER	----->		----->	-----	-----	TYPE	
41. OIL GAS METER	----->		----->	-----	-----	TYPE	CTB
42. OIL GAS METER	----->		----->	-----	-----	TYPE	
43. OIL GAS METER	----->		----->	-----	-----	TYPE	CTB
44. OIL GAS METER	----->		----->	-----	-----	TYPE	
45. OIL GAS METER	----->		----->	-----	-----	TYPE	CTB
46. OIL GAS METER	----->		----->	-----	-----	TYPE	
47. OIL GAS METER	----->		----->	-----	-----	TYPE	CTB
48. OIL GAS METER	----->		----->	-----	-----	TYPE	
49. OIL GAS METER	----->		----->	-----	-----	TYPE	CTB
50. OIL GAS METER	----->		----->	-----	-----	TYPE	
51. OIL GAS METER	----->		----->	-----	-----	TYPE	CTB
52. OIL GAS METER	----->		----->	-----	-----	TYPE	
53. OIL GAS METER	----->		----->	-----	-----	TYPE	CTB
54. OIL GAS METER	----->		----->	-----	-----	TYPE	
55. OIL GAS METER	----->		----->	-----	-----	TYPE	CTB
56. OIL GAS METER	----->		----->	-----	-----	TYPE	
57. OIL GAS METER	----->		----->	-----	-----	TYPE	CTB
58. OIL GAS METER	----->		----->	-----	-----	TYPE	
59. OIL GAS METER	----->		----->	-----	-----	TYPE	CTB
60. OIL GAS METER	----->		----->	-----	-----	TYPE	
61. OIL GAS METER	----->		----->	-----	-----	TYPE	CTB
62. OIL GAS METER	----->		----->	-----	-----	TYPE	
63. OIL GAS METER	----->		----->	-----	-----	TYPE	CTB
64. OIL GAS METER	----->		----->	-----	-----	TYPE	
65. OIL GAS METER	----->		----->	-----	-----	TYPE	CTB
66. OIL GAS METER	----->		----->	-----	-----	TYPE	
67. OIL GAS METER	----->		----->	-----	-----	TYPE	CTB
68. OIL GAS METER	----->		----->	-----	-----	TYPE	
69. OIL GAS METER	----->		----->	-----	-----	TYPE	CTB
70. OIL GAS METER	----->		----->	-----	-----	TYPE	
71. OIL GAS METER	----->		----->	-----	-----	TYPE	CTB
72. OIL GAS METER	----->		----->	-----	-----	TYPE	
73. OIL GAS METER	----->		----->	-----	-----	TYPE	CTB
74. OIL GAS METER	----->		----->	-----	-----	TYPE	
75. OIL GAS METER	----->		----->	-----	-----	TYPE	CTB
76. OIL GAS METER	----->		----->	-----	-----	TYPE	
77. OIL GAS METER	----->		----->	-----	-----	TYPE	CTB
78. OIL GAS METER	----->		----->	-----	-----	TYPE	
79. OIL GAS METER	----->		----->	-----	-----	TYPE	CTB
80. OIL GAS METER	----->		----->	-----	-----	TYPE	
81. OIL GAS METER	----->		----->	-----	-----	TYPE	CTB
82. OIL GAS METER	----->		----->	-----	-----	TYPE	
83. OIL GAS METER	----->		----->	-----	-----	TYPE	CTB
84. OIL GAS METER	----->		----->	-----	-----	TYPE	
85. OIL GAS METER	----->		----->	-----	-----	TYPE	CTB
86. OIL GAS METER	----->		----->	-----	-----	TYPE	
87. OIL GAS METER	----->		----->	-----	-----	TYPE	CTB
88. OIL GAS METER	----->		----->	-----	-----	TYPE	
89. OIL GAS METER	----->		----->	-----	-----	TYPE	CTB
90. OIL GAS METER	----->		----->	-----	-----	TYPE	
91. OIL GAS METER	----->		----->	-----	-----	TYPE	CTB
92. OIL GAS METER	----->		----->	-----	-----	TYPE	
93. OIL GAS METER	----->		----->	-----	-----	TYPE	CTB
94. OIL GAS METER	----->		----->	-----	-----	TYPE	
95. OIL GAS METER	----->		----->	-----	-----	TYPE	CTB
96. OIL GAS METER	----->		----->	-----	-----	TYPE	
97. OIL GAS METER	----->		----->	-----	-----	TYPE	CTB
98. OIL GAS METER	----->		----->	-----	-----	TYPE	
99. OIL GAS METER	----->		----->	-----	-----	TYPE	CTB
100. OIL GAS METER	----->		----->	-----	-----	TYPE	
101. OIL GAS METER	----->		----->	-----	-----	TYPE	CTB
102. OIL GAS METER	----->		----->	-----	-----	TYPE	
103. OIL GAS METER	----->		----->	-----	-----	TYPE	CTB
104. OIL GAS METER	----->		----->	-----	-----	TYPE	
105. OIL GAS METER	----->		----->	-----	-----	TYPE	CTB
106. OIL GAS METER	----->		----->	-----	-----	TYPE	
107. OIL GAS METER	----->		----->	-----	-----	TYPE	CTB
108. OIL GAS METER	----->		----->	-----	-----	TYPE	
109. OIL GAS METER	----->		----->	-----	-----	TYPE	CTB
110. OIL GAS METER	----->		----->	-----	-----	TYPE	
111. OIL GAS METER	----->		----->	-----	-----	TYPE	CTB
112. OIL GAS METER	----->		----->	-----	-----	TYPE	
113. OIL GAS METER	----->		----->	-----	-----	TYPE	CTB
114. OIL GAS METER	----->		----->	-----	-----	TYPE	
115. OIL GAS METER	----->		----->	-----	-----	TYPE	CTB
116. OIL GAS METER	----->		----->	-----	-----	TYPE	
117. OIL GAS METER	----->		----->	-----	-----	TYPE	CTB
118. OIL GAS METER	----->		----->	-----	-----	TYPE	
119. OIL GAS METER	----->		----->	-----	-----	TYPE	CTB
120. OIL GAS METER	----->		----->	-----	-----	TYPE	
121. OIL GAS METER	----->		----->	-----	-----	TYPE	CTB
122. OIL GAS METER	----->		----->	-----	-----	TYPE	
123. OIL GAS METER	----->		----->	-----	-----	TYPE	CTB
124. OIL GAS METER	----->		----->	-----	-----	TYPE	
125. OIL GAS METER	----->		----->	-----	-----	TYPE	CTB
126. OIL GAS METER	----->		----->	-----	-----	TYPE	
127. OIL GAS METER	----->		----->	-----	-----	TYPE	CTB
128. OIL GAS METER	----->		----->	-----	-----	TYPE	
129. OIL GAS METER	----->		----->	-----	-----	TYPE	CTB
130. OIL GAS METER	----->		----->	-----	-----	TYPE	
131. OIL GAS METER	----->		----->	-----	-----	TYPE	CTB
132. OIL GAS METER	----->		----->	-----	-----	TYPE	
133. OIL GAS METER	----->		----->	-----	-----	TYPE	CTB
134. OIL GAS METER	----->		----->	-----	-----	TYPE	
135. OIL GAS METER	----->		----->	-----	-----	TYPE	CTB
136. OIL GAS METER	----->		----->	-----	-----	TYPE	
137. OIL GAS METER	----->		----->	-----	-----	TYPE	CTB
138. OIL GAS METER	----->		----->	-----	-----	TYPE	
139. OIL GAS METER	----->		----->	-----	-----	TYPE	CTB
140. OIL GAS METER	----->		----->	-----	-----	TYPE	
141. OIL GAS METER	----->		----->	-----	-----	TYPE	CTB
142. OIL GAS METER	----->		----->	-----	-----	TYPE	
143. OIL GAS METER	----->		----->	-----	-----	TYPE	CTB
144. OIL GAS METER	----->		----->	-----	-----	TYPE	
145. OIL GAS METER	----->		----->	-----	-----	TYPE	CTB
146. OIL GAS METER	----->		----->	-----	-----	TYPE	
147. OIL GAS METER	----->		----->	-----	-----	TYPE	CTB
148. OIL GAS METER	----->		----->	-----	-----	TYPE	
149. OIL GAS METER	----->		----->	-----	-----	TYPE	CTB
150. OIL GAS METER	----->		----->	-----	-----	TYPE	
151. OIL GAS METER	----->		----->	-----	-----	TYPE	CTB
152. OIL GAS METER	----->		----->	-----	-----	TYPE	
153. OIL GAS METER	----->		----->	-----	-----	TYPE	CTB
154. OIL GAS METER	----->		----->	-----	-----	TYPE	
155. OIL GAS METER	----->		----->	-----	-----	TYPE	CTB
156. OIL GAS METER	----->		----->	-----	-----	TYPE	
157. OIL GAS METER	----->		----->	-----	-----	TYPE	CTB
158. OIL GAS METER	----->		----->	-----	-----	TYPE	
159. OIL GAS METER	----->		----->	-----	-----	TYPE	CTB
160. OIL GAS METER	----->		----->	-----	-----	TYPE	
161. OIL GAS METER	----->		----->	-----	-----	TYPE	CTB
162. OIL GAS METER	----->		----->	-----	-----	TYPE	
163. OIL GAS METER	----->		----->	-----	-----	TYPE	CTB
164. OIL GAS METER	----->		----->	-----	-----	TYPE	
165. OIL GAS METER	----->		----->	-----	-----	TYPE	CTB
166. OIL GAS METER	----->		----->	-----	-----	TYPE	
167. OIL GAS METER	----->		----->	-----	-----	TYPE	CTB
168. OIL GAS METER	----->		----->	-----	-----	TYPE	
169. OIL GAS METER	----->		----->	-----	-----	TYPE	CTB
170. OIL GAS METER	----->		----->	-----	-----	TYPE	
171. OIL GAS METER	----->		----->	-----	-----	TYPE	CTB
172. OIL GAS METER	----->		----->	-----	-----	TYPE	
173. OIL GAS METER	----->		----->	-----	-----	TYPE	CTB
174. OIL GAS METER	----->		----->	-----	-----	TYPE	
175. OIL GAS METER	----->		----->	-----	-----	TYPE	CTB
176. OIL GAS METER	----->		----->	-----	-----	TYPE	
177. OIL GAS METER	----->		----->	-----	-----	TYPE	CTB
178. OIL GAS METER	----->		----->	-----	-----	TYPE	
179. OIL GAS METER	----->		----->	-----	-----	TYPE	CTB
180. OIL GAS METER	----->		----->	-----	-----	TYPE	
181. OIL GAS METER	----->		----->	-----	-----	TYPE	CTB
182. OIL GAS METER	----->		----->	-----	-----	TYPE	
183. OIL GAS METER	----->		----->	-----	-----	TYPE	CTB
184. OIL GAS METER	----->		----->	-----	-----	TYPE	
185. OIL GAS METER	----->		----->	-----	-----	TYPE	CTB
186. OIL GAS METER	----->		----->	-----	-----	TYPE	
187. OIL GAS METER	----->		----->	-----	-----	TYPE	CTB
188. OIL GAS METER	----->		----->	-----	-----	TYPE	



OXY USA INC
A subsidiary of Occidental Petroleum Corporation

5 Greenway Plaza, Suite 110, Houston, Texas 77046
P.O. Box 4294, Houston, Texas 77210-4294
Direct: 713.497.2076
Emily_Messer@oxy.com

April 18, 2019

CERTIFIED MAIL
RETURN RECEIPT REQUESTED

To Whom It May Concern:

This is to advise you that OXY USA INC is filing an Off Lease Measurement application with the New Mexico Oil Conservation Division and Bureau of Land Management for the following wells:

- Width CC 6 7 Federal Com #015H
- Time CC 6 7 Federal Com #044H
- Height CC 6 7 Federal Com #034H
- Height CC 6 7 Federal Com #035H
- Height CC 6 7 Federal Com #036H
- Length CC 6 7 Federal Com #024H
- Length CC 6 7 Federal Com #025H
- Length CC 6 7 Federal Com #026H
- Height CC 6 7 Federal Com #312H
- Width CC 6 7 Federal Com #014H

A copy of the application is enclosed for your review.

Pursuant to NMAC 19.15.23.9, interested parties must file objections or requests for hearing in writing with the New Mexico Oil Conservation Division office within 20 days after notice, or the Commission may approve the application.

For questions pertaining to the application, please contact Kathleen Mowery at (713) 366-5109.

Respectfully,

OXY USA INC
Kathleen Mowery
Permian Regulatory
(713) 366-5109
Kathleen_Mowery@oxy.com

Off-lease storage, measurement, and sales notification list

Name	Address	City	State	Zip	TRACKING
Concho Oil and Gas LLC	600 W. Illinois Avenue	MIDLAND	TX	79701	701803600000006200000
The Scott E Wilson Bypass	4601 Mirador Drive	AUSTIN	TX	78735	701803600000006200000
The Richard K Barr Family Trust	8027 CHALK KNOLL DR	AUSTIN	TX	78735	701803600000006200000
Magnum Hunter Production Inc	600 N. Marienfeld, Suite 600	Midland	TX	79701	701803600000006200000



**OXY USA WTP Limited Partnership / OXY
USA INC / OCCIDENTAL PERMIAN LTD**
A subsidiary of Occidental Petroleum Corporation

5 Greenway Plaza, Suite 110, Houston, Texas
77046
P.O. Box 4294, Houston, Texas 77210-4294

March 12, 2019

Re: **Pool Commingle Application for Dimensions Central Tank Battery**

Section 6, T24S R29E, Eddy County

**Time CC 6 7 Federal Com #043H- Purple Sage; Wolfcamp 98220
Time CC 6 7 Federal Com #044H- Purple Sage; Wolfcamp 98220
Height CC 6 7 Federal Com #034H- Purple Sage; Wolfcamp 98220
Height CC 6 7 Federal Com #035H- Purple Sage; Wolfcamp 98220
Height CC 6 7 Federal Com #036H- Purple Sage; Wolfcamp 98220
Length CC 6 7 Federal Com #024H- Pierce Crossing; Bone Spring 50371
Length CC 6 7 Federal Com #025H- Pierce Crossing; Bone Spring 50371
Length CC 6 7 Federal Com #026H- Pierce Crossing; Bone Spring 50371
Width CC 6 7 Federal Com #013H- Pierce Crossing; Bone Spring 50371
Width CC 6 7 Federal Com #014H- Pierce Crossing; Bone Spring 50371**

To Whom It May Concern:

OXY USA INC., as Operator, will be filing an application with the New Mexico Oil Conservation Division for approval of the above mentioned commingle project. This letter serves to notice you that the operator and interest owners are identical for the wells listed above.

Best Regards,

OXY USA INC.

Peter Van Liew
Land Negotiator



**OXY USA WTP Limited Partnership / OXY
USA INC / OCCIDENTAL PERMIAN LTD**
A subsidiary of Occidental Petroleum Corporation

5 Greenway Plaza, Suite 110, Houston, Texas
77046
P.O. Box 4294, Houston, Texas 77210-4294

March 12, 2019

Re: **Pool Commingle Application for Dimensions Central Tank Battery**

Section 6, T24S R29E, Eddy County

**Time CC 6 7 Federal Com #041H- Purple Sage; Wolfcamp 98220
Time CC 6 7 Federal Com #042H- Purple Sage; Wolfcamp 98220
Height CC 6 7 Federal Com #031Y- Purple Sage; Wolfcamp 98220
Height CC 6 7 Federal Com #032H- Purple Sage; Wolfcamp 98220
Height CC 6 7 Federal Com #033H- Purple Sage; Wolfcamp 98220
Length CC 6 7 Federal Com #021H- Pierce Crossing; Bone Spring 50371
Length CC 6 7 Federal Com #022H- Pierce Crossing; Bone Spring 50371
Length CC 6 7 Federal Com #023H- Pierce Crossing; Bone Spring 50371
Width CC 6 7 Federal Com #011H- Pierce Crossing; Bone Spring 50371
Width CC 6 7 Federal Com #012H- Pierce Crossing; Bone Spring 50371**

To Whom It May Concern:

OXY USA INC., as Operator, will be filing an application with the New Mexico Oil Conservation Division for approval of the above mentioned commingle project. This letter serves to notice you that the operator and interest owners are identical for the wells listed above.

Best Regards,

OXY USA INC.

Peter Van Liew
Land Negotiator

District I
1623 N. French Dr., Hobbs, NM 88240
Phone: (505) 393-4161 Fax: (505) 393-8720
District II
811 S. First St., Artesia, NM 88210
Phone: (505) 748-1283 Fax: (505) 748-9720
District III
1030 Rio Grande Road, Alamo, NM 87418
Phone: (505) 334-6178 Fax: (505) 334-6178
District IV
1230 S. St. Francis Dr., Santa Fe, NM 87505
Phone: (505) 476-3460 Fax: (505) 476-3462

State of New Mexico
Energy, Minerals & Natural Resources Department
OIL CONSERVATION DIVISION
1220 South St. Francis Dr.
Santa Fe, NM 87505

Form C-102
Revised August 1, 2011
Submit one copy to appropriate
District Office

☒ AMENDED REPORT

WELL LOCATION AND ACREAGE DEDICATION PLAT

API Number 30-015-45629	Pool Code 50371	Pool Name Pierce Crossing Dine Spring
Property Code 323065	Property Name WIDTH CC "6-7" FEDERAL COM	Well Number 17H
OGRID No. 16696	Operator Name OXY USA INC.	Elevation 2958.8'

Surface Location

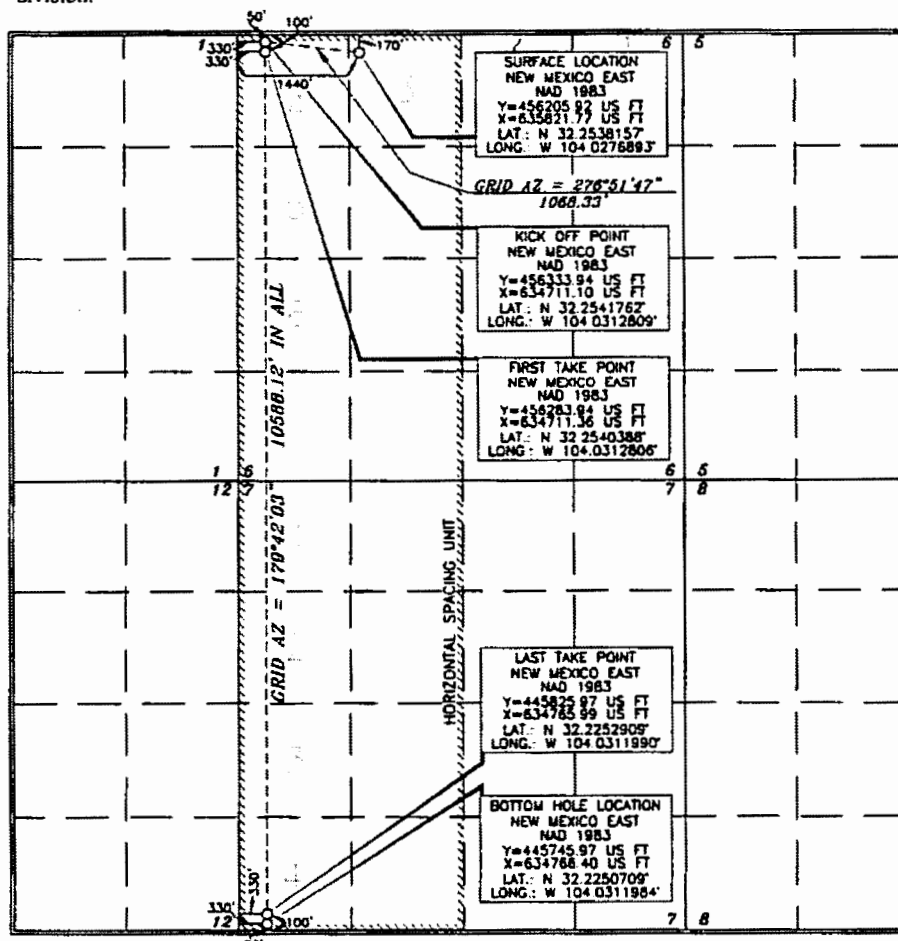
UL or lot no.	Section	Township	Range	Lot Idn	Feet from the	North/South line	Feet from the	East/West line	County
3	6	24 SOUTH	29 EAST, N.M.P.M.		170'	NORTH	1440'	WEST	EDDY

Bottom Hole Location If Different From Surface

UL or lot no.	Section	Township	Range	Lot Idn	Feet from the	North/South line	Feet from the	East/West line	County
4	7	24 SOUTH	29 EAST, N.M.P.M.		20'	SOUTH	330'	WEST	EDDY

Dedicated Acres	Joint or Infill	Consolidation Code	Order No.
640			

No allowable will be assigned to this completion until all interests have been consolidated or a non-standard unit has been approved by the division.



OPERATOR CERTIFICATION

I hereby certify that the information contained herein is true and complete to the best of my knowledge and belief, and that this organization either owns a working interest or undivided mineral interest in the land including the proposed bottom hole location or has a right to drill this well at this location pursuant to a contract with an owner of such a mineral or working interest, or to a voluntary pooling agreement or a compulsory pooling order.

Signature: **Sarah Chapman** 4/16/19
Name: **Sarah Chapman**
E-mail Address: **sarah_chapman@oxy.com**

SURVEYOR CERTIFICATION

I hereby certify that the survey shown on this plat was made by me or under my supervision and that the same is true and correct to the best of my belief.

Signature: **Terry J. As...**
Professional Surveyor
Date of Survey: **15079**
Date of Plat: **15079**

Signature: **Terry J. As...** 4/5/2019
Certificate Number: **15079**

District I
 1623 N. French Dr., Hobbs, NM 88240
 Phone: (575) 393-6161 Fax: (575) 393-6728
 District II
 611 S. First St., Artesia, NM 88210
 Phone: (575) 748-1233 Fax: (575) 748-9720
 District III
 1000 Rio Grande Road, Aztec, NM 87410
 Phone: (505) 334-6178 Fax: (505) 334-6170
 District IV
 1220 S. St. Francis Dr., Santa Fe, NM 87505
 Phone: (505) 476-3469 Fax: (505) 476-3465

State of New Mexico
 Energy, Minerals & Natural Resources Department
OIL CONSERVATION DIVISION
 1220 South St. Francis Dr.
 Santa Fe, NM 87505

Form C-102
 Revised August 1, 2011
 Submit one copy to appropriate
 District Office

☒ AMENDED REPORT

WELL LOCATION AND ACREAGE DEDICATION PLAT

API Number 30-015-45575	Pool Code 50371	Pool Name Pierce Crossing Blue Spring
Property Code 323065	Property Name WIDTH CC "6-7" FEDERAL COM	Well Number 16H
OGRID No. 110696	Operator Name OXY USA INC.	Elevation 2958.7'

Surface Location

UL or lot no.	Section	Township	Range	Lot Idn	Feet from the	North/South line	Feet from the	East/West line	County
3	6	24 SOUTH	29 EAST, N.M.P.M.		170'	NORTH	1475'	WEST	EDDY

Bottom Hole Location If Different From Surface

UL or lot no.	Section	Township	Range	Lot Idn	Feet from the	North/South line	Feet from the	East/West line	County
N	7	24 SOUTH	29 EAST, N.M.P.M.		20'	SOUTH	1700'	WEST	EDDY

Dedicated Acres	Joint or Infill	Consolidation Code	Order No.
640			

No allowable will be assigned to this completion until all interests have been consolidated or a non-standard unit has been approved by the division.

OPERATOR CERTIFICATION

I hereby certify that the information contained herein is true and complete to the best of my knowledge and belief, and that the organization either owns a working interest or undivided mineral interest in the land including the proposed bottom hole location or has a right to drill that well at this location pursuant to a contract with an owner of such a mineral or working interest, or to a voluntary pooling agreement or a compulsory pooling order heretofore entered by the division.

Sarah Chapman 4/16/19
 Signature
Sarah Chapman
 Printed Name
sarah_chapman@oxy.com
 E-mail Address

SURVEYOR CERTIFICATION

I hereby certify that the information shown on this plat was prepared by me or under my direct supervision and that the same is true and correct to the best of my belief.

FERRY J ASE
 Date of Survey
15079
 Signature and Seal
FERRY J ASE
 Professional Surveyor

Tony Alford 4/15/2019
 Certificate Number
 15079

WO# 180626WL-d (Rev. B) (KA)

NM OIL CONSERVATION
ARTESIA DISTRICT

MAR 05 2019

Energy, Minerals & Natural Resources Department
OIL CONSERVATION DIVISION
1220 South St. Francis Dr.
Santa Fe, NM 87505
Phone: (505) 476-3480 Fax: (505) 476-3483

State of New Mexico
Energy, Minerals & Natural Resources Department
OIL CONSERVATION DIVISION
1220 South St. Francis Dr.
Santa Fe, NM 87505

Form C-102
Revised August 1, 2011
Submit one copy to appropriate
District Office

☐ AMENDED REPORT

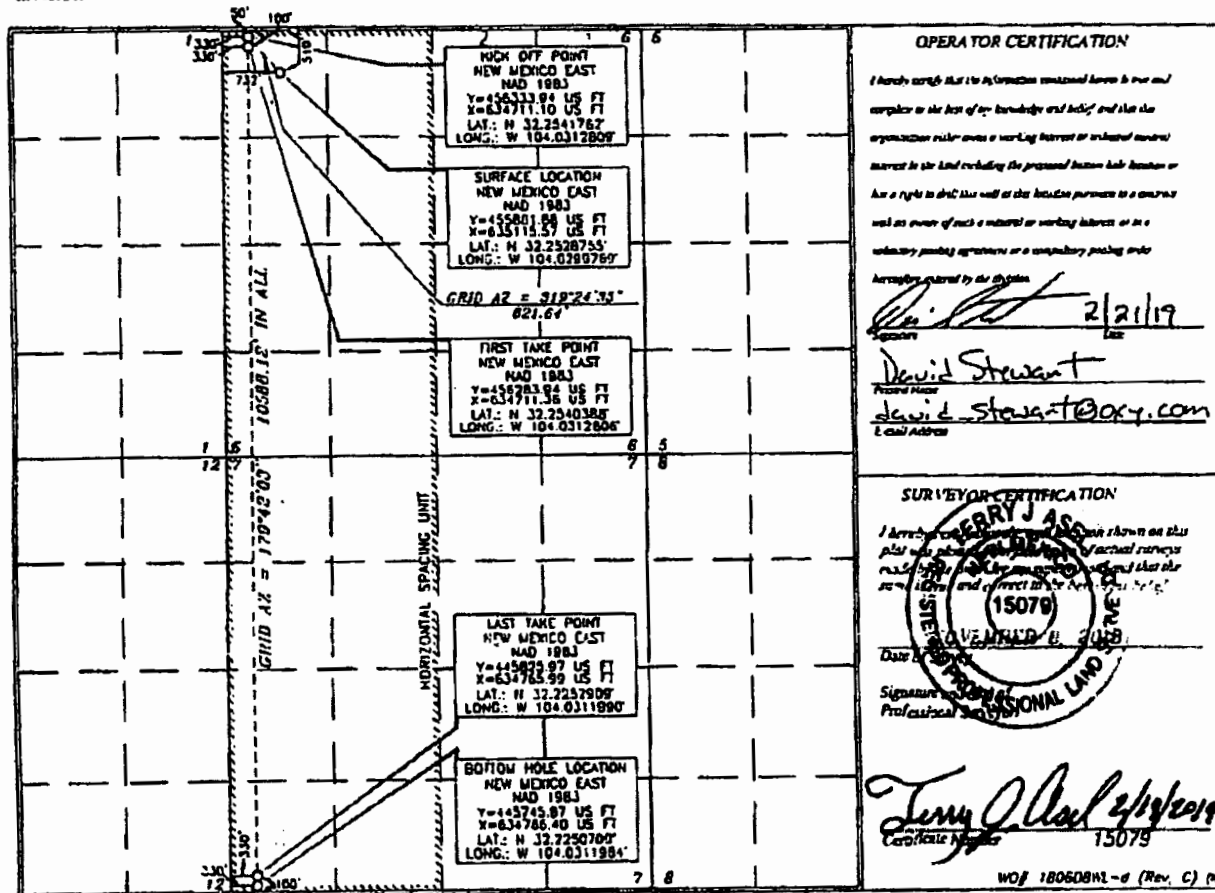
WELL LOCATION AND ACREAGE DEDICATION PLAT

API Number 30015-45770	Pool Code 98220	Pool Name Purple Sage Wolfound
Property Code 32300B	Property Name HEIGHT CC "6-7" FEDERAL COM	Well Number 31Y ✓
OGRID No. 16696	Operator Name OXY USA INC.	Elevation 2963.6'

UL or lot no.	Section	Township	Range	Lot	Feet from the	North/South line	Feet from the	East/West line	County
D	6	24 SOUTH	29 EAST, N.M.P.M.		619'	NORTH	732'	WEST	EDDY

UL or lot no.	Section	Township	Range	Lot	Feet from the	North/South line	Feet from the	East/West line	County
M	7	24 SOUTH	29 EAST, N.M.P.M.		20'	SOUTH	330'	WEST	EDDY
Dedicated Acres 637.33		Joint or Infill Y	Consolidation Code	Order No.					

No allowable will be assigned to this completion until all interests have been consolidated or a non-standard unit has been approved by the division.



OPERATOR CERTIFICATION

I hereby certify that the information contained herein is true and complete to the best of my knowledge and belief, and that the organization under whose authority I am acting is duly organized and has a right to drill the well at this location pursuant to a contract well as owner of such a mineral or working interest or as a voluntary pooling agreement or a compulsory pooling order heretofore entered by the division.

Signature: **David Stewart**
Date: **2/21/19**
Printed Name: **David Stewart**
E-mail Address: **david.stewart@oxy.com**

SURVEYOR CERTIFICATION

I hereby certify that the information shown on this plat was prepared by me or under my direct supervision and that I am a duly licensed and qualified surveyor under the laws of the State of New Mexico.

Signature: **Terry J. Asch**
Date: **2/21/19**
Professional Seal: **15079**

WOF 180608H2-d (Rev. C) (N)

RW3-5-19

Division I
1431 N. French Dr., Hobbs, NM 88240
Phone: (505) 393-6161 Fax: (505) 393-0720
Division II
811 S. First St., Artesia, NM 88210
Phone: (505) 348-1783 Fax: (505) 348-8730
Division III
1000 New Mexico Road, Aztec, NM 87410
Phone: (505) 334-6128 Fax: (505) 334-6130
Division IV
1220 S. St. Francis Dr., Santa Fe, NM 87501
Phone: (505) 476-3460 Fax: (505) 476-3462

State of New Mexico **NM OIL CONSERVATION**
Energy, Minerals & Natural Resources **ARTESIA DISTRICT**
OIL CONSERVATION DIVISION
1220 South St. Francis Dr. **DEC 14 2018**
Santa Fe, NM 87505

Form C-102
Revised August 1, 2011
Submit one copy to appropriate
District Office

RECEIVED

☐ AMENDED REPORT

WELL LOCATION AND ACREAGE DEDICATION PLAT

API Number 30-015-45554	Pool Code 98220	Pool Name Purple Sage Wolfcand
Property Code 323 008	Property Name HEIGHT CC "6-7" FEDERAL COM	Well Number 32H
OGRID No. 116696	Operator Name OXY USA INC.	Elevation 2964.6'

Surface Location

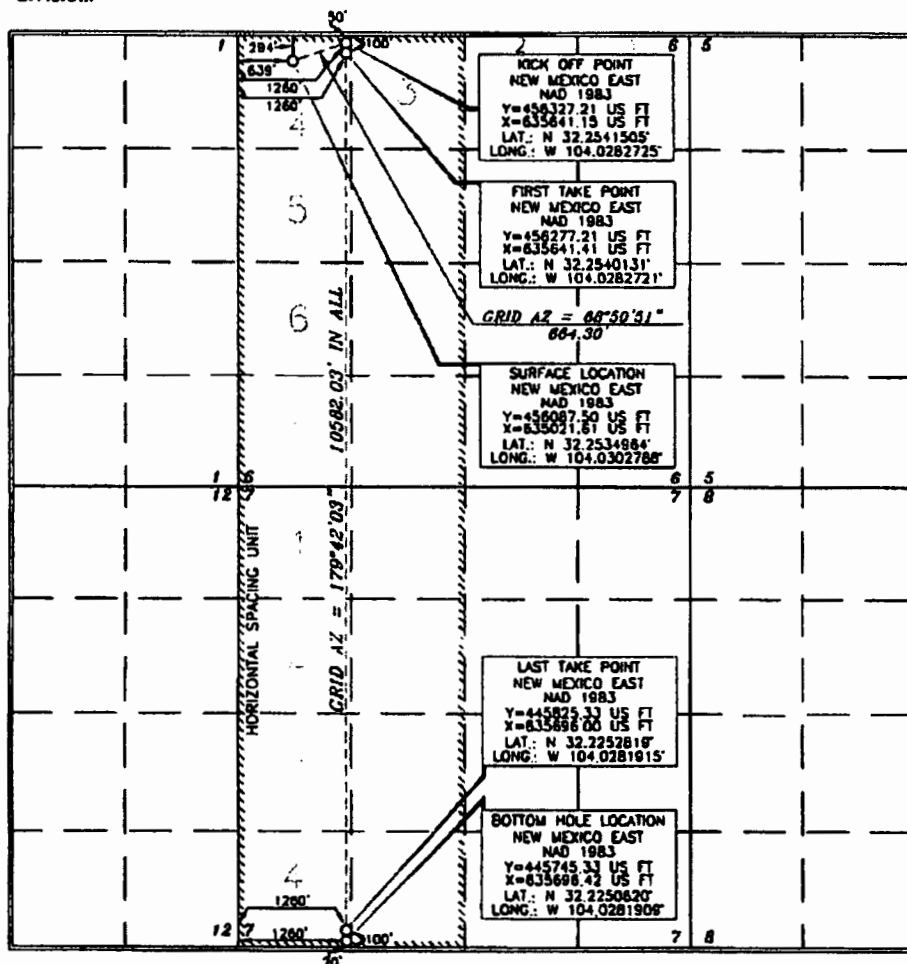
UL or lot no.	Section	Township	Range	Lot Idn	Feet from the	North/South line	Feet from the	East/West line	County
4	6	24 SOUTH	29 EAST, N.M.P.M.		294'	NORTH	639'	WEST	EDDY

Bottom Hole Location If Different From Surface

UL or lot no.	Section	Township	Range	Lot Idn	Feet from the	North/South line	Feet from the	East/West line	County
4	7	24 SOUTH	29 EAST, N.M.P.M.		20'	SOUTH	1260'	WEST	EDDY

Dedicated Acres 640	Joint or Infill Y	Consolidation Code	Order No.
-------------------------------	-----------------------------	--------------------	-----------

No allowable will be assigned to this completion until all interests have been consolidated or a non-standard unit has been approved by the division.



OPERATOR CERTIFICATION

I hereby certify that the information contained herein is true and complete to the best of my knowledge and belief, and that this organization either owns a working interest or undivided mineral interest in the land including the proposed bottom hole location or has a right to drill this well at this location pursuant to a contract with an owner of such a mineral or working interest, or to a voluntary pooling agreement or a compulsory pooling order
hereby approved by the division
David Stewart 8/14/18
Signature Date
David Stewart
Printed Name
david_stewart@oxy.com
E-mail Address

SURVEYOR CERTIFICATION

I hereby certify that the plat and location shown on this plat was plotted from field notes and actual surveys made by me or a duly sworn surveyor, and that the same is true and correct to the best of my belief
Date of Survey
Signature and Seal of Professional Surveyor
Professional Surveyor

Tommy Alar 8/14/2018
Certificate Number 15079

WOF 180608WL-C (NA)

Ruf 12-17-18

NM OIL CONSERVATION

ARTESIA DISTRICT

DEC 18 2018

Form C-102

Revised August 1, 2011

RECEIVED

Submit one copy to appropriate

District Office

☐ AMENDED REPORT

District I
1623 N. French Dr., Hobbs, NM 88240
Phone: (505) 393-4161 Fax: (505) 393-0720
District II
811 S. First St., Artesia, NM 88210
Phone: (505) 748-1281 Fax: (505) 748-9720
District III
1000 Rio Grande Blvd., Aztec, NM 87410
Phone: (505) 334-6178 Fax: (505) 334-6170
District IV
1228 S. St. Francis Dr., Santa Fe, NM 87505
Phone: (505) 476-3400 Fax: (505) 476-3462

State of New Mexico
Energy, Minerals & Natural Resources Department
OIL CONSERVATION DIVISION
1220 South St. Francis Dr.
Santa Fe, NM 87505

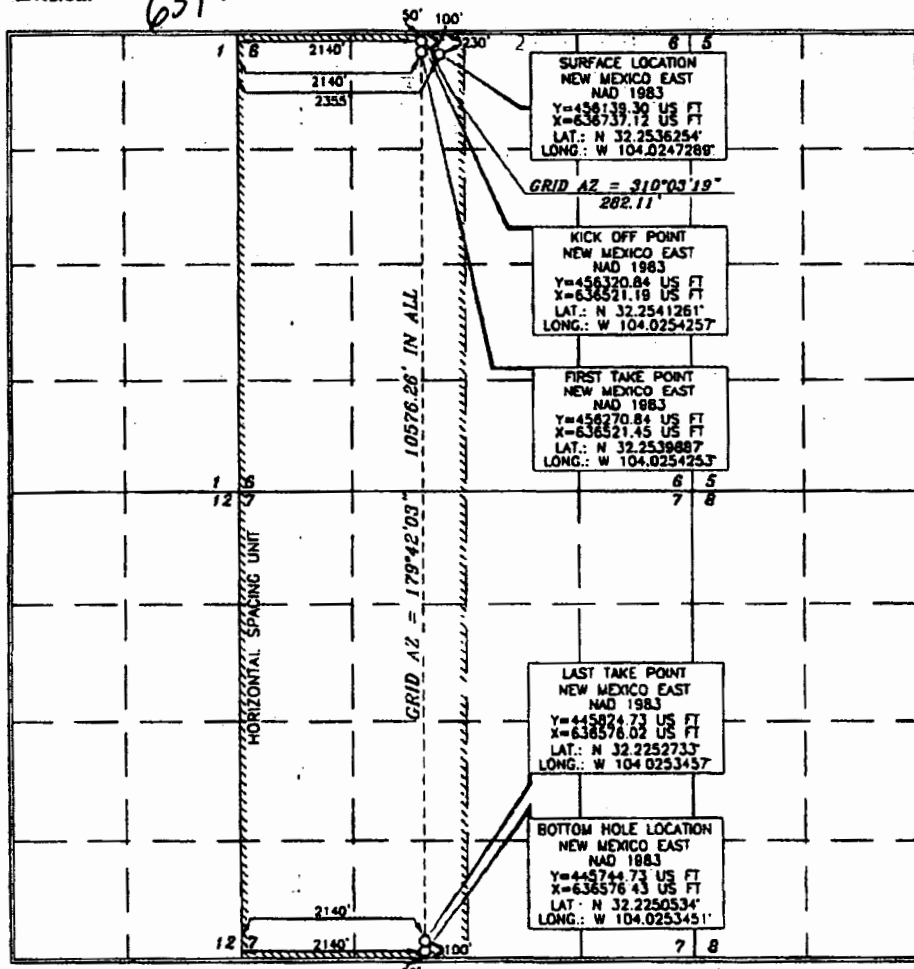
WELL LOCATION AND ACREAGE DEDICATION PLAT

API Number 30-015-45561	Pool Code 98220	Pool Name Purple Sage Wolfcamp
Property Code 323008	Property Name HEIGHT CC "6-7" FEDERAL COM	Well Number 33H
OGRID No. 116696	Operator Name OXY USA INC.	Elevation 2958.2'

Surface Location									
UL or lot no.	Section	Township	Range	Lot Idn	Feet from the	North/South line	Feet from the	East/West line	County
3	6	24 SOUTH	29 EAST, N.M.P.M.		230'	NORTH	2355'	WEST	EDDY

Bottom Hole Location If Different From Surface									
UL or lot no.	Section	Township	Range	Lot Idn	Feet from the	North/South line	Feet from the	East/West line	County
N	7	24 SOUTH	29 EAST, N.M.P.M.		20'	SOUTH	2140'	WEST	EDDY
Dedicated Acres 640		Joint or Infill Y	Consolidation Code	Order No.					

No allowable will be assigned to this completion until all interests have been consolidated or a non-standard unit has been approved by the division.



OPERATOR CERTIFICATION	
I hereby certify that the information contained herein is true and complete to the best of my knowledge and belief, and that this organization either owns a working interest or undivided mineral interest in the land including the proposed bottom hole location or has a right to drill this well at this location pursuant to a contract with an owner of such a mineral or working interest, or to a voluntary pooling agreement or a compulsory pooling order heretofore entered by the division.	
Signature David Stewart	Date 8/15/18
Printed Name David Stewart	
E-mail Address David.Stewart@oxy.com	

SURVEYOR CERTIFICATION	
I hereby certify that the well location shown on this plat was plotted from reliable professional surveys made by me or under my supervision, and that the same is true and correct to the best of my knowledge.	
Date of Survey JUNE 22, 2018	
Signature and Seal of Professional Surveyor Terry J. Asch	
Certificate Number 15079	

WOF 180627WL-c (NA)

RWP/12-18-18 N SP Required

**NM OIL CONSERVATION
ARTESIA DISTRICT**

MAR 05 2019

Revised 11/15/11
1220 S. St. Francis Dr., Santa Fe, NM 87505
Phone: (505) 313-6181 Fax: (505) 313-6720
Revised 11/15/11
111 S. First St., Artesia, NM 88210
Phone: (505) 748-7283 Fax: (505) 748-9720
Revised 11/15/11
1220 S. St. Francis Dr., Santa Fe, NM 87505
Phone: (505) 313-6181 Fax: (505) 313-6720
Revised 11/15/11
1220 S. St. Francis Dr., Santa Fe, NM 87505
Phone: (505) 313-6181 Fax: (505) 313-6720

**State of New Mexico
Energy, Minerals & Natural Resources Department
OIL CONSERVATION DIVISION
1220 South St. Francis Dr.
Santa Fe, NM 87505**

RECEIVED

**Form C-102
Revised August 1, 2011
Submit one copy to appropriate
District Office**

☒ **AMENDED REPORT**

WELL LOCATION AND ACREAGE DEDICATION PLAT

API Number 30-015-45553	Pool Code 50371	Pool Name Pierce Crossing Bone Springs
Property Code 323007	Property Name LENGTH CC "6_7" FEDERAL COM	Well Number 21H
OGRIID No. 16696	Operator Name OXY USA INC.	Elevation 2983.5'

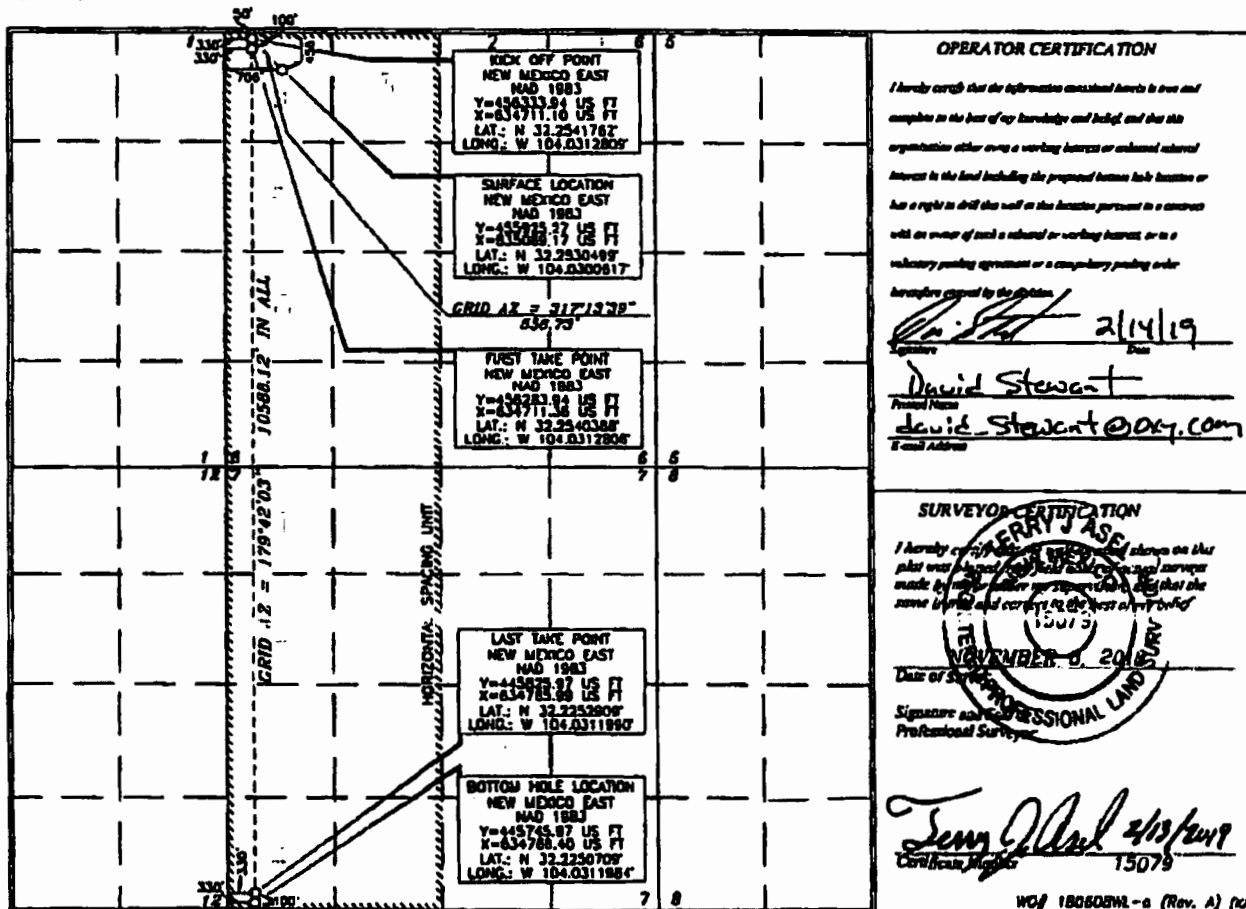
Surface Location

UL or lot no.	Section	Township	Range	Lot ldn	Feet from the	North/South line	Feet from the	East/West line	County
4	8	24 SOUTH	29 EAST, N.M.P.M.		456'	NORTH	708'	WEST	EDDY

Bottom Hole Location If Different From Surface

UL or lot no.	Section	Township	Range	Lot ldn	Feet from the	North/South line	Feet from the	East/West line	County
M 4	7	24 SOUTH	29 EAST, N.M.P.M.		20'	SOUTH	330'	WEST	EDDY
Dedicated Acres 637.33	Joint or Infill Y	Consolidation Code	Order No.						

No allowable will be assigned to this completion until all interests have been consolidated or a non-standard unit has been approved by the division.



OPERATOR CERTIFICATION

I hereby certify that the information contained herein is true and complete to the best of my knowledge and belief and that the organization either owns a working interest or undivided interest in the land including the proposed bottom hole location or has a right to drill the well on the location pursuant to a contract with an owner of such a working interest, or to a voluntary pooling agreement or a compulsory pooling order heretofore entered by the Division.

David Stewart
Signature
David.Stewart@oxy.com
E-mail Address

SURVEYOR CERTIFICATION

I hereby certify that the information contained herein is true and complete to the best of my knowledge and belief and that the organization either owns a working interest or undivided interest in the land including the proposed bottom hole location or has a right to drill the well on the location pursuant to a contract with an owner of such a working interest, or to a voluntary pooling agreement or a compulsory pooling order heretofore entered by the Division.

Professional Surveyor
Signature
Professional Surveyor

Professional Surveyor
Signature
Professional Surveyor

WDG 180505ML-a (Rev. A) (10)

RUP 3-5-19

NM OIL CONSERVATION
ARTESIA DISTRICT

DEC 18 2018

Form C-102

State of New Mexico
Energy, Minerals & Natural Resources Department
OIL CONSERVATION DIVISION
1220 South St. Francis Dr.
Santa Fe, NM 87505

RECEIVED Revised August 1, 2011
Submit one copy to appropriate
District Office

☐ AMENDED REPORT

District I
1625 N. French Dr., Hobbs, NM 88240
Phone: (575) 393-6161 Fax: (575) 393-0720
District II
811 S. First St., Artesia, NM 88210
Phone: (575) 748-1283 Fax: (575) 748-9720
District III
1000 Rio Arriba Road, Aztec, NM 87410
Phone: (505) 334-6178 Fax: (505) 334-6170
District IV
1220 S. St. Francis Dr., Santa Fe, NM 87505
Phone: (505) 476-3460 Fax: (505) 476-3462

WELL LOCATION AND ACREAGE DEDICATION PLAT

API Number 30-015-45565	Pool Code 50371	Pool Name Pierre Crossing Bone Spring
Property Code 323-007	Property Name LENGTH CC "6_7" FEDERAL COM	Well Number 22H
OGRID No. 16696	Operator Name OXY USA INC.	Elevation 2963.0'

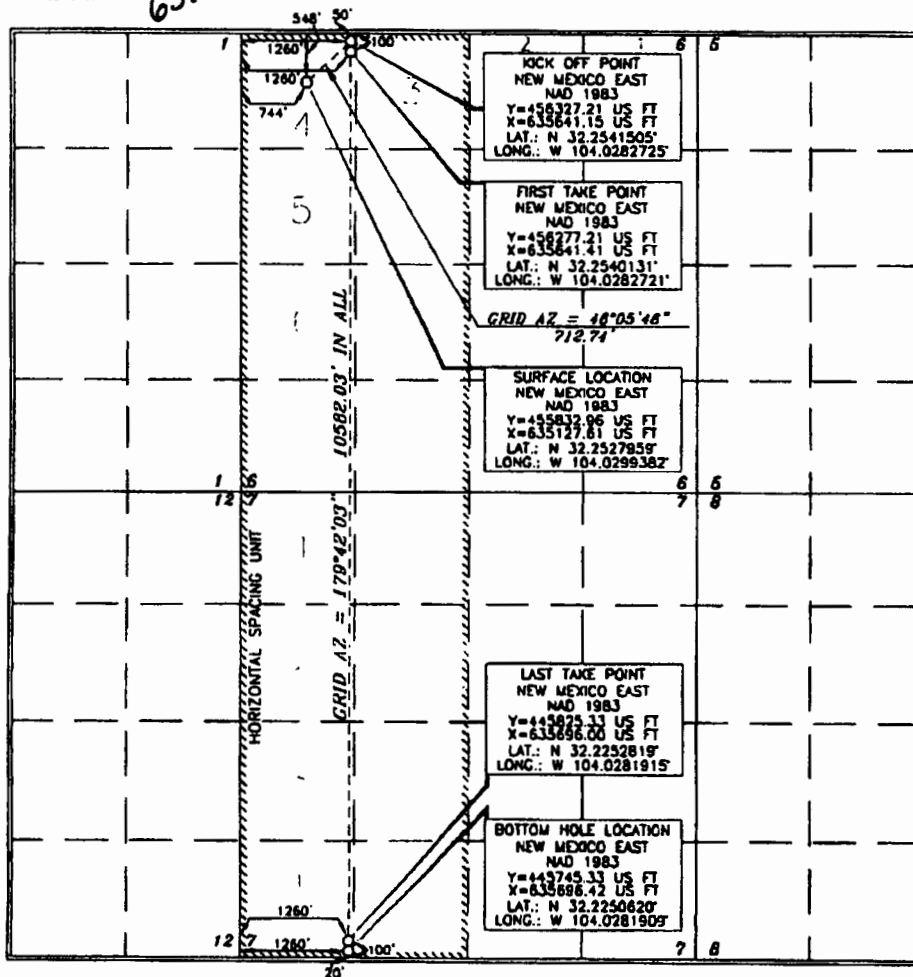
Surface Location

UL or lot no.	Section	Township	Range	Lot Idn	Feet from the	North/South line	Feet from the	East/West line	County
4	6	24 SOUTH	29 EAST, N.M.P.M.		548'	NORTH	744'	WEST	EDDY

Bottom Hole Location If Different From Surface

UL or lot no.	Section	Township	Range	Lot Idn	Feet from the	North/South line	Feet from the	East/West line	County
4	7	24 SOUTH	29 EAST, N.M.P.M.		20'	SOUTH	1260'	WEST	EDDY
Dedicated Acres 640		Joint or Infill Y	Consolidation Code	Order No.					

No allowable will be assigned to this completion until all interests have been consolidated or a non-standard unit has been approved by the division.



OPERATOR CERTIFICATION

I hereby certify that the information contained herein is true and complete to the best of my knowledge and belief, and that this organization either owns a working interest or unleased mineral interest in the land including the proposed bottom hole location or has a right to drill this well at this location pursuant to a contract with an owner of such a mineral or working interest, or to a voluntary pooling agreement or a compulsory pooling order heretofore entered by the division.

Signature: *David Stewart* Date: **01/13**

Printed Name: **David Stewart**

E-mail Address: **david_stewart@oxy.com**

SURVEYOR CERTIFICATION

I hereby certify that the information shown on this plat was obtained from field notes of actual surveys made by me or under my supervision, and that the same is true and correct to the best of my belief.

Date of Survey: **JUNE 8, 2018**

Signature and Seal of Professional Surveyor: *Terry J. Ass...*

Certificate Number: **15079**

WOF 180608WL-b (NA)

RWP 12-19-18

Division I
1625 N. French Dr., Hobbs, NM 88240
Phone: (505) 293-6161 Fax: (505) 293-0720
Division II
911 S. First St., Arroyo, NM 88210
Phone: (505) 748-1283 Fax: (505) 748-9720
Division III
1000 Rio Grande Road, Aztec, NM 87410
Phone: (505) 334-6179 Fax: (505) 334-6170
Division IV
1230 S. St. Francis Dr., Santa Fe, NM 87505
Phone: (505) 476-3460 Fax: (505) 476-3462

State of New Mexico **NM OIL CONSERVATION**
Energy, Minerals & Natural Resources Department DISTRICT
OIL CONSERVATION DIVISION
1220 South St. Francis Dr. DEC 14 2018
Santa Fe, NM 87505

Form C-102
Revised August 1, 2011
Submit one copy to appropriate
District Office

☐ AMENDED REPORT

RECEIVED

WELL LOCATION AND ACREAGE DEDICATION PLAT

API Number 30-015-45551	Pool Code 50371	Pool Name Pierce Crossing Bone Spring
Property Code 323007	Property Name LENGTH CC "6_7" FEDERAL COM	Well Number 23H
OGRID No. 16696	Operator Name OXY USA INC.	Elevation 2958.5'

Surface Location

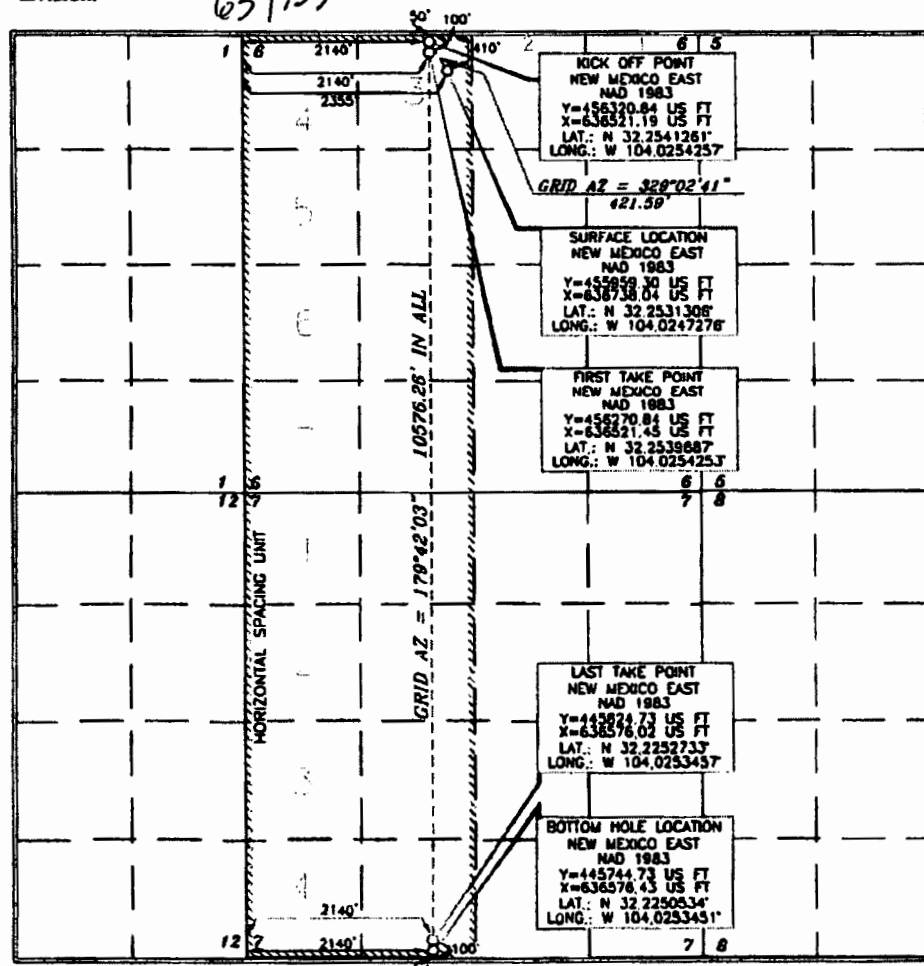
UL or lot no.	Section	Township	Range	Lot Idn	Feet from the	North/South line	Feet from the	East/West line	County
3	6	24 SOUTH	29 EAST, N.M.P.M.		410'	NORTH	2355'	WEST	EDDY

Bottom Hole Location If Different From Surface

UL or lot no.	Section	Township	Range	Lot Idn	Feet from the	North/South line	Feet from the	East/West line	County
N	7	24 SOUTH	29 EAST, N.M.P.M.		20'	SOUTH	2140'	WEST	EDDY

Dedicated Acres	Joint or Infill	Consolidation Code	Order No.
640	Y		

No allowable will be assigned to this completion until all interests have been consolidated or a non-standard unit has been approved by the division.



OPERATOR CERTIFICATION

I hereby certify that the information contained herein is true and complete to the best of my knowledge and belief, and that this organization either owns a working interest or undivided mineral interest in the land including the proposed bottom hole location or has a right to drill this well at this location pursuant to a contract with an owner of such a mineral or working interest, or to a voluntary pooling agreement or a compulsory pooling order having been covered by the operator.

Signature: **David Stewart** Date: **6/21/18**
Printed Name: **David Stewart**
E-mail Address: **david.stewart@oxy.com**

SURVEYOR CERTIFICATION

I hereby certify that the well location shown on this plat was located from the best of actual surveys made to my knowledge and belief, and that the same is true and correct to the best of my belief.

Date of Survey: **JUNE 27, 2018**
Signature and Seal: **Terry J. Adams**
Professional Surveyor: **15079**

Certificate Number: **15079**

WO# 180627WL-B (KA)

RIP 12-14-18

NM OIL CONSERVATION
ARTESIA DISTRICT

JAN 03 2019

District I
1635 N. French Dr., Hobbs, NM 88240
Phone: (575) 393-4161 Fax: (575) 393-4720
District II
911 S. First St., Artesia, NM 88210
Phone: (575) 748-1283 Fax: (575) 748-9720
District III
1000 Rio Brazos Road, Aztec, NM 87410
Phone: (505) 334-6178 Fax: (505) 334-6170
District IV
1220 S. St. Francis Dr., Santa Fe, NM 87505
Phone: (505) 476-3460 Fax: (505) 476-3462

State of New Mexico
Energy, Minerals & Natural Resources Department
OIL CONSERVATION DIVISION
1220 South St. Francis Dr.
Santa Fe, NM 87505

RECEIVED

Form C-102
Revised August 1, 2011
Submit one copy to appropriate
District Office

☐ AMENDED REPORT

WELL LOCATION AND ACREAGE DEDICATION PLAT

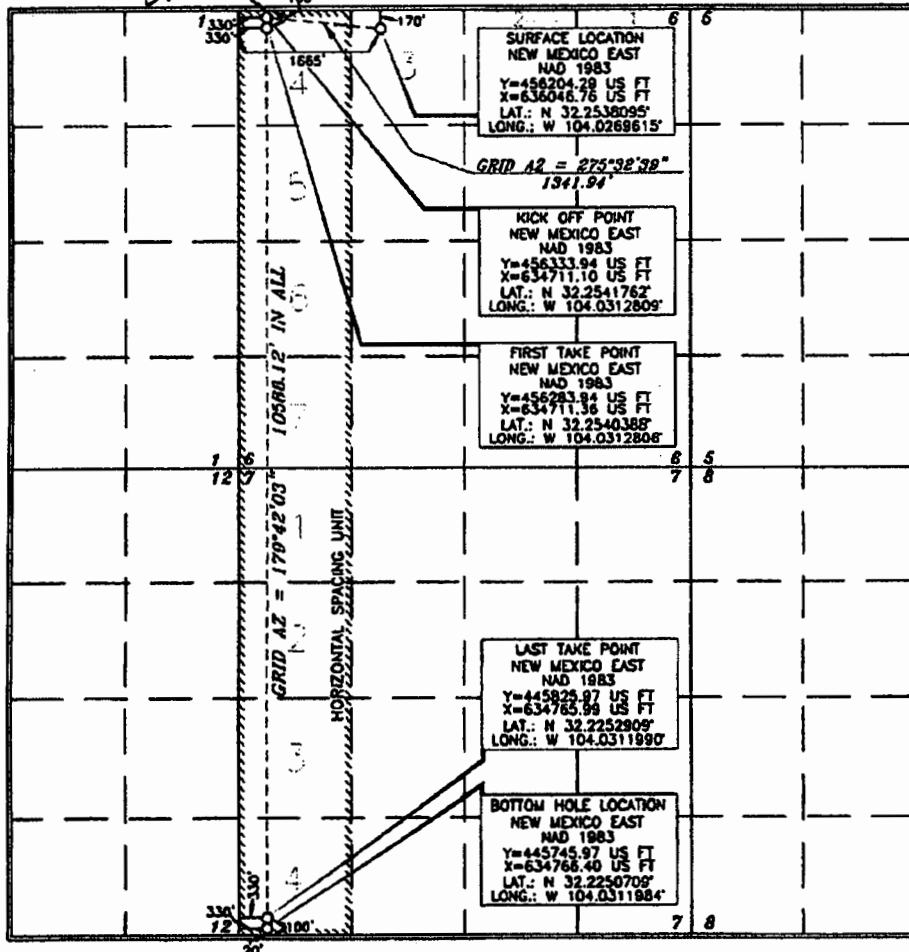
API Number 30-015-45571	Pool Code 50371	Pool Name Pierce Crossing Bone Spring
Property Code 323065	Property Name WIDTH CC "6-7" FEDERAL COM	Well Number 11H
OGRIID No. 16696	Operator Name OXY USA INC.	Elevation 2957.8'

Surface Location									
UL or lot no.	Section	Township	Range	Lot Idn	Feet from the	North/South line	Feet from the	East/West line	County
3	6	24 SOUTH	29 EAST, N.M.P.M.		170'	NORTH	1665'	WEST	EDDY

Bottom Hole Location If Different From Surface									
UL or lot no.	Section	Township	Range	Lot Idn	Feet from the	North/South line	Feet from the	East/West line	County
4	7	24 SOUTH	29 EAST, N.M.P.M.		20'	SOUTH	330'	WEST	EDDY

Dedicated Acres 320	Joint or Infill Y	Consolidation Code	Order No.
-------------------------------	-----------------------------	--------------------	-----------

No allowable will be assigned to this completion until all interests have been consolidated or a non-standard unit has been approved by the division.



OPERATOR CERTIFICATION	
I hereby certify that the information contained herein is true and complete to the best of my knowledge and belief, and that this organization either owns a working interest or undivided mineral interest in the land including the proposed bottom hole location or has a right to drill this well as the location pursuant to a contract with an owner of such a mineral or working interest, or to a voluntary pooling agreement or a compulsory pooling order heretofore entered by the division.	
Signature <i>Justin Morris</i>	Date 8/15/18
Printed Name Justin Morris	
E-mail Address Justin.Morris@oxy.com	
SURVEYOR CERTIFICATION	
I hereby certify that the well location shown on this plat was plotted from the results of actual surveys made by me or under my supervision and that the same is true and correct to the best of my belief.	
Date of Survey JUNE 7, 2018	Certificate Number 15079
Signature and Seal of Professional Surveyor <i>Terry J. As...</i>	
WO# 180607ML-a (NA)	

RUP 1-2-19

District I
1625 N. French Dr., Hobbs, NM 88240
Phone: (575) 393-6161 Fax: (575) 393-0720
District II
911 S. First St., Artesia, NM 88210
Phone: (575) 748-1283 Fax: (575) 748-9720
District III
1000 Rio Brazos Road, Altec, NM 87410
Phone: (505) 334-6178 Fax: (505) 334-6170
District IV
1220 S. St. Francis Dr., Santa Fe, NM 87505
Phone: (505) 476-3460 Fax: (505) 476-3462

State of New Mexico
Energy, Minerals & Natural Resources Department
OIL CONSERVATION DIVISION
1220 South St. Francis Dr.
Santa Fe, NM 87505

Form C-102
Revised August 1, 2011
Submit one copy to appropriate
District Office

☒ AMENDED REPORT

WELL LOCATION AND ACREAGE DEDICATION PLAT

API Number 30-015-45030	Pool Code 50371	Pool Name Pierce Crossing; Bone Spring
Property Code 323065	Property Name HEIGHT CC "B-7" FEDERAL COM	Well Number 311H
OGRID No. 16696	Operator Name OXY USA INC.	Elevation 2957.7'

Surface Location

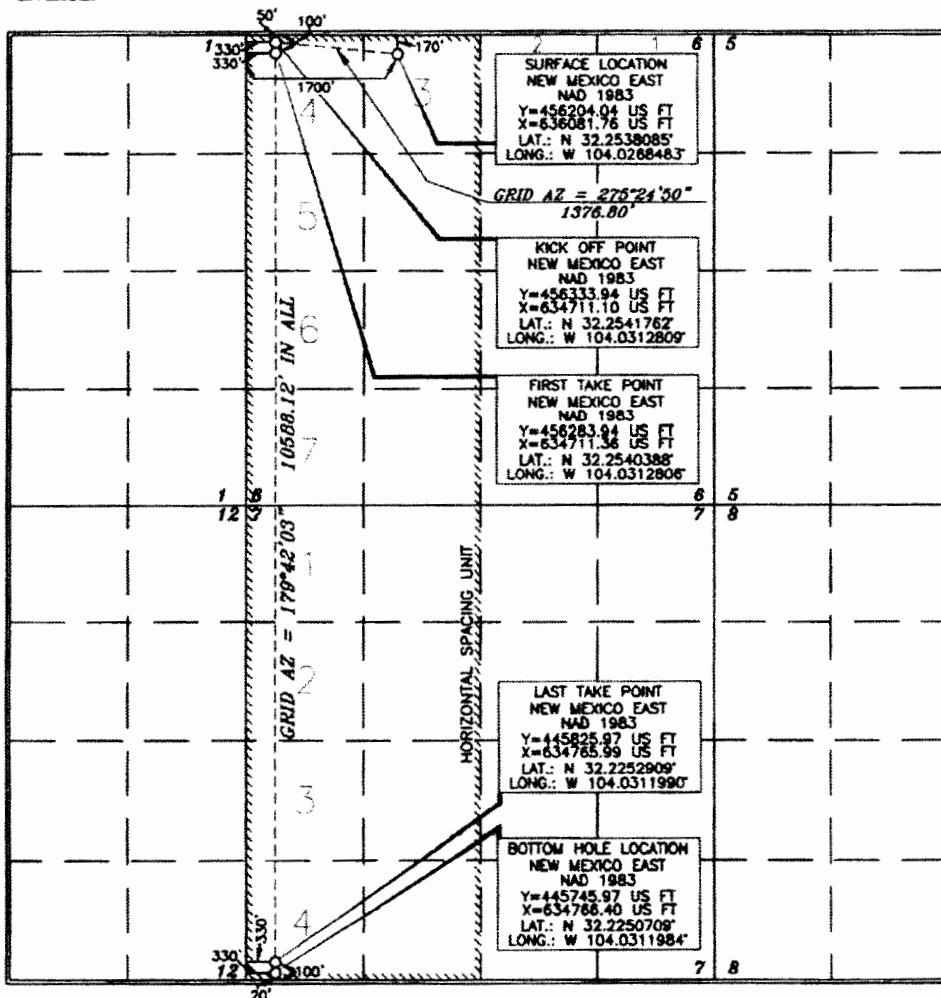
UL or lot no.	Section	Township	Range	Lot Idn	Feet from the	North/South line	Feet from the	East/West line	County
3	6	24 SOUTH	29 EAST, N.M.P.M.		170'	NORTH	1700'	WEST	EDDY

Bottom Hole Location If Different From Surface

UL or lot no.	Section	Township	Range	Lot Idn	Feet from the	North/South line	Feet from the	East/West line	County
4	7	24 SOUTH	29 EAST, N.M.P.M.		20'	SOUTH	330'	WEST	EDDY

Dedicated Acres 640	Joint or Infill	Consolidation Code	Order No.
-------------------------------	-----------------	--------------------	-----------

No allowable will be assigned to this completion until all interests have been consolidated or a non-standard unit has been approved by the division.



OPERATOR CERTIFICATION

I hereby certify that the information contained herein is true and complete to the best of my knowledge and belief, and that this organization either owns a working interest or unleased mineral interest in the land including the proposed bottom hole location or has a right to drill this well at this location pursuant to a contract with an owner of such a mineral or working interest, or to a voluntary pooling agreement or a compulsory pooling order heretofore entered by the division.

Signature: **Sarah Chapman** Date: **4/15/19**
Printed Name: **Sarah Chapman**
E-mail Address: **sarah_chapman@oxy.com**

SURVEYOR CERTIFICATION

I hereby certify that the plat and data shown on this plat was plotted from field notes of actual surveys made by myself under my supervision and that the same is true and correct to the best of my belief.

Date of Survey: **JUNE 26, 2018**
Signature and Seal: **TERRY J. ASE**
Professional Surveyor: **15079**

Signature: **Terry Aase** Date: **4/5/2019**
Certificate Number: **15079**

District I
1625 N. French Dr., Hobbs, NM 88240
Phone: (575) 393-6161 Fax: (575) 393-0720
District II
811 S. First St., Artesia, NM 88210
Phone: (575) 748-1283 Fax: (575) 748-9720
District III
1000 Rue Brance Road, Aztec, NM 87410
Phone: (505) 334-6179 Fax: (505) 334-6170
District IV
1220 S. St. Francis Dr., Santa Fe, NM 87505
Phone: (505) 476-3460 Fax: (505) 476-3462

State of New Mexico
Energy, Minerals & Natural Resources Department
OIL CONSERVATION DIVISION
1220 South St. Francis Dr.
Santa Fe, NM 87505

Form C-102
Revised August 1, 2011
Submit one copy to appropriate
District Office

☒ AMENDED REPORT

WELL LOCATION AND ACREAGE DEDICATION PLAT

API Number 30-015-45574	Pool Code 50371	Pool Name Pierce Crossing Bone Spring
Property Code 323065	Property Name WIDTH CC "6-7" FEDERAL COM	Well Number 15H
OGRID No. 16696	Operator Name OXY USA INC.	Elevation 2960.0'

Surface Location

UL or lot no.	Section	Township	Range	Lot Ida	Feet from the	North/South line	Feet from the	East/West line	County
1	6	24 SOUTH	29 EAST, N.M.P.M.		65'	NORTH	1181'	EAST	EDDY

Bottom Hole Location If Different From Surface

UL or lot no.	Section	Township	Range	Lot Ida	Feet from the	North/South line	Feet from the	East/West line	County
0	7	24 SOUTH	29 EAST, N.M.P.M.		20'	SOUTH	2260'	EAST	EDDY

Dedicated Acres	Joint or Infill	Consolidation Code	Order No.
640			

No allowable will be assigned to this completion until all interests have been consolidated or a non-standard unit has been approved by the division.

	<p>OPERATOR CERTIFICATION</p> <p>I hereby certify that the information contained herein is true and complete to the best of my knowledge and belief, and that this organization either owns a working interest or undivided mineral interest in the land including the proposed bottom hole location or has a right to drill the well at this location pursuant to a contract with an owner of such a mineral or working interest, or to a voluntary pooling agreement or a compulsory pooling order heretofore entered by the division.</p> <p><i>Sarah Chapman</i> 4/16/19 Signature Date <i>Sarah Chapman</i> Printed Name <i>Sarah.Chapman@oxy.com</i> E-mail Address</p> <p>SURVEYOR CERTIFICATION</p> <p>I hereby certify that the information shown on this plat was plotted from the field and/or surveys made by me or under my supervision and that the same is true and correct to the best of my belief.</p> <p><i>ERRY J. AS</i> 15079 JUNE 22, 2018 Date of Survey <i>ERRY J. AS</i> Signature and Seal Professional Land Surveyor <i>ERRY J. AS</i> 4/5/2019 Certificate Number 15079</p> <p>WO# 180527WL-d (Rev. A) (KA)</p>
--	--

NM OIL CONSERVATION
ARTESIA DISTRICT

JAN 02 2019

Form C-102

State of New Mexico
Energy, Minerals & Natural Resources Department
OIL CONSERVATION DIVISION
1220 South St. Francis Dr.
Santa Fe, NM 87505

RECEIVED

Revised August 1, 2011
Submit one copy to appropriate
District Office

☐ AMENDED REPORT

District I
1425 N. French Dr., Hobbs, NM 88240
Phone: (575) 393-6161 Fax: (575) 393-0720
District II
811 S. First St., Artesia, NM 88210
Phone: (575) 748-1281 Fax: (575) 748-9720
District III
1000 Rio Grande Road, Amarillo, NM 87416
Phone: (505) 334-6178 Fax: (505) 334-6170
District IV
1220 S. St. Francis Dr., Santa Fe, NM 87505
Phone: (505) 476-3460 Fax: (505) 476-3462

WELL LOCATION AND ACREAGE DEDICATION PLAT

API Number 30015-45577	Pool Code 78220	Pool Name Purple Sage Wolfcamp
Property Code 323066	Property Name TIME CC "6-7" FEDERAL COM	Well Number 44H
OGRID No. 16696	Operator Name OXY USA INC.	Elevation 2958.6'

Surface Location									
UL or lot no.	Section	Township	Range	Lot Idn	Feet from the	North/South line	Feet from the	East/West line	County
X 1	6	24 SOUTH	29 EAST, N.M.P.M.		65'	NORTH	1146'	EAST	EDDY

Bottom Hole Location If Different From Surface									
UL or lot no.	Section	Township	Range	Lot Idn	Feet from the	North/South line	Feet from the	East/West line	County
P	7	24 SOUTH	29 EAST, N.M.P.M.		20'	SOUTH	940'	EAST	EDDY
Dedicated Acres 640		Joint or Infill Y		Consolidation Code		Order No.			

No allowable will be assigned to this completion until all interests have been consolidated or a non-standard unit has been approved by the division.

<p>SURFACE LOCATION NEW MEXICO EAST NAD 1983 Y=456291.63 US FT X=638524.93 US FT LAT.: N 32.2540298° LONG.: W 104.0189442°</p> <p>GRID AZ = 80°14'13" 206.38'</p> <p>KICK OFF POINT NEW MEXICO EAST NAD 1983 Y=456305.17 US FT X=638730.84 US FT LAT.: N 32.2540654° LONG.: W 104.0182780°</p> <p>FIRST TAKE POINT NEW MEXICO EAST NAD 1983 Y=456255.17 US FT X=638731.09 US FT LAT.: N 32.2539280° LONG.: W 104.0182777°</p> <p>LAST TAKE POINT NEW MEXICO EAST NAD 1983 Y=445874.08 US FT X=638782.88 US FT LAT.: N 32.2252540° LONG.: W 104.0182091°</p> <p>BOTTOM HOLE LOCATION NEW MEXICO EAST NAD 1983 Y=445744.08 US FT X=638783.28 US FT LAT.: N 32.2250340° LONG.: W 104.0182086°</p>	<p>OPERATOR CERTIFICATION</p> <p>I hereby certify that the information contained herein is true and complete to the best of my knowledge and belief, and that this organization either owns a working interest or undivided mineral interest in the land including the proposed bottom hole location or has a right to drill this well at this location pursuant to a contract with an owner of such a mineral or working interest, or to a voluntary pooling agreement or a compulsory pooling order heretofore entered by the division.</p> <p>Signature: <i>David Stewart</i> Date: 8/23/18</p> <p>Printed Name: David Stewart</p> <p>E-mail Address: david.stewart@oxy.com</p> <p>SURVEYOR CERTIFICATION</p> <p>I hereby certify that the well location shown on this plat was placed from the results of actual surveys made by me or under my supervision and that the same is true and correct to the best of my belief.</p> <p>Date of Survey: JUNE 2 2018</p> <p>Signature and Seal: <i>James Paul</i></p> <p>Professional Surveyor: 15079</p> <p>Certificate Number: 15079</p>
--	--

RW-1-2-19

NSP. Required

NM OIL CONSERVATION
ARTESIA DISTRICT

DEC 18 2018

Form C-102

District I
1613 N. French Dr., Hobbs, NM 88240
Phone: (505) 393-6161 Fax: (505) 393-4770
District II
211 S. First St., Artesia, NM 88210
Phone: (505) 748-1283 Fax: (505) 748-9720
District III
1000 Rio Grande Road, Alamosa, NM 87410
Phone: (505) 334-6178 Fax: (505) 334-6170
District IV
1230 S. St. Francis Dr., Santa Fe, NM 87505
Phone: (505) 476-3460 Fax: (505) 476-3463

State of New Mexico
Energy, Minerals & Natural Resources Department
OIL CONSERVATION DIVISION
1220 South St. Francis Dr.
Santa Fe, NM 87505

RECEIVED

Revised August 1, 2011
Submit one copy to appropriate
District Office

☐ AMENDED REPORT

WELL LOCATION AND ACREAGE DEDICATION PLAT

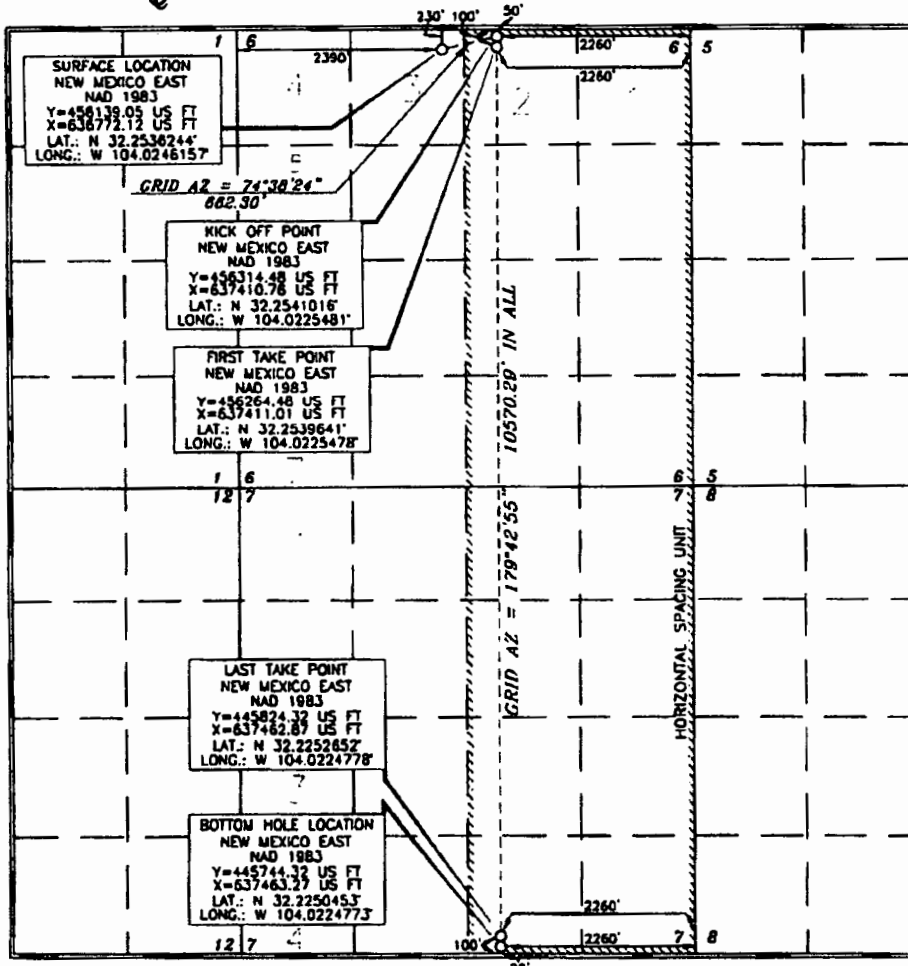
API Number 30-015-45562	Pool Code 98220	Pool Name Purple Sage Wolfcamp
Property Code 323008	Property Name HEIGHT CC "6-7" FEDERAL COM	Well Number 34H
OGRID No. 16696	Operator Name OXY USA INC.	Elevation 2958.4'

UT or lot no.	Section	Township	Range	Lot Ida	Feet from the	North/South line	Feet from the	East/West line	County
3	6	24 SOUTH	29 EAST, N.M.P.M.		230'	NORTH	2390'	WEST	EDDY

UT or lot no.	Section	Township	Range	Lot Ida	Feet from the	North/South line	Feet from the	East/West line	County
0	7	24 SOUTH	29 EAST, N.M.P.M.		20'	SOUTH	2260'	EAST	EDDY

Dedicated Acres 6.40	Joint or Infill Y	Consolidation Code	Order No.
--------------------------------	-----------------------------	--------------------	-----------

No allowable well is assigned to this completion until all interests have been consolidated or a non-standard unit has been approved by the division.



OPERATOR CERTIFICATION

I hereby certify that the information contained herein is true and complete to the best of my knowledge and belief, and that this organization either owns a working interest or undivided mineral interest in the land including the proposed bottom hole location or has a right to drill this well at this location pursuant to a contract with an owner of such a mineral or working interest, or to a voluntary pooling agreement or a compulsory pooling order heretofore entered by the division.

Signature: David Stewart Date: 01/15/18

Printed Name: David Stewart

E-mail Address: david_stewart@oxy.com

SURVEYOR CERTIFICATION

I hereby certify that the well location shown on this plat was plotted from field notes of actual surveys made by me or under my supervision, and that the same is true and correct to the best of my belief.

Date of Survey: JUNE 28, 2018

Signature and Seal of Professional Surveyor: Terry J. Asch

Certificate Number: 15079

WOL 180628WL-C (KA)

Rw 12-18-18 NSP Required

NM OIL CONSERVATION

ARTESIA DISTRICT

DEC 18 2018

District I
1623 N. French Dr., Hobbs, NM 88240
Phone: (575) 393-4161 Fax: (575) 393-0720
District II
811 S. First St., Artesia, NM 88210
Phone: (575) 748-1283 Fax: (575) 748-9720
District III
1000 Iro Brown Road, Aztec, NM 87410
Phone: (505) 334-6178 Fax: (505) 334-6170
District IV
1228 S. St. Francis Dr., Santa Fe, NM 87505
Phone: (505) 476-3460 Fax: (505) 476-3463

State of New Mexico
Energy, Minerals & Natural Resources Department
OIL CONSERVATION DIVISION
1220 South St. Francis Dr.
Santa Fe, NM 87505

RECEIVED

Form C-102
Revised August 1, 2011
Submit one copy to appropriate
District Office

☐ AMENDED REPORT

WELL LOCATION AND ACREAGE DEDICATION PLAT

API Number 30-015-45563	Pool Code 98220	Pool Name Purple Sage Wolfcamp
Property Code 323008	Property Name HEIGHT CC "6-7" FEDERAL COM	Well Number 35H
OGRID No. 16696	Operator Name OXY USA INC.	Elevation 2956.1'

Surface Location

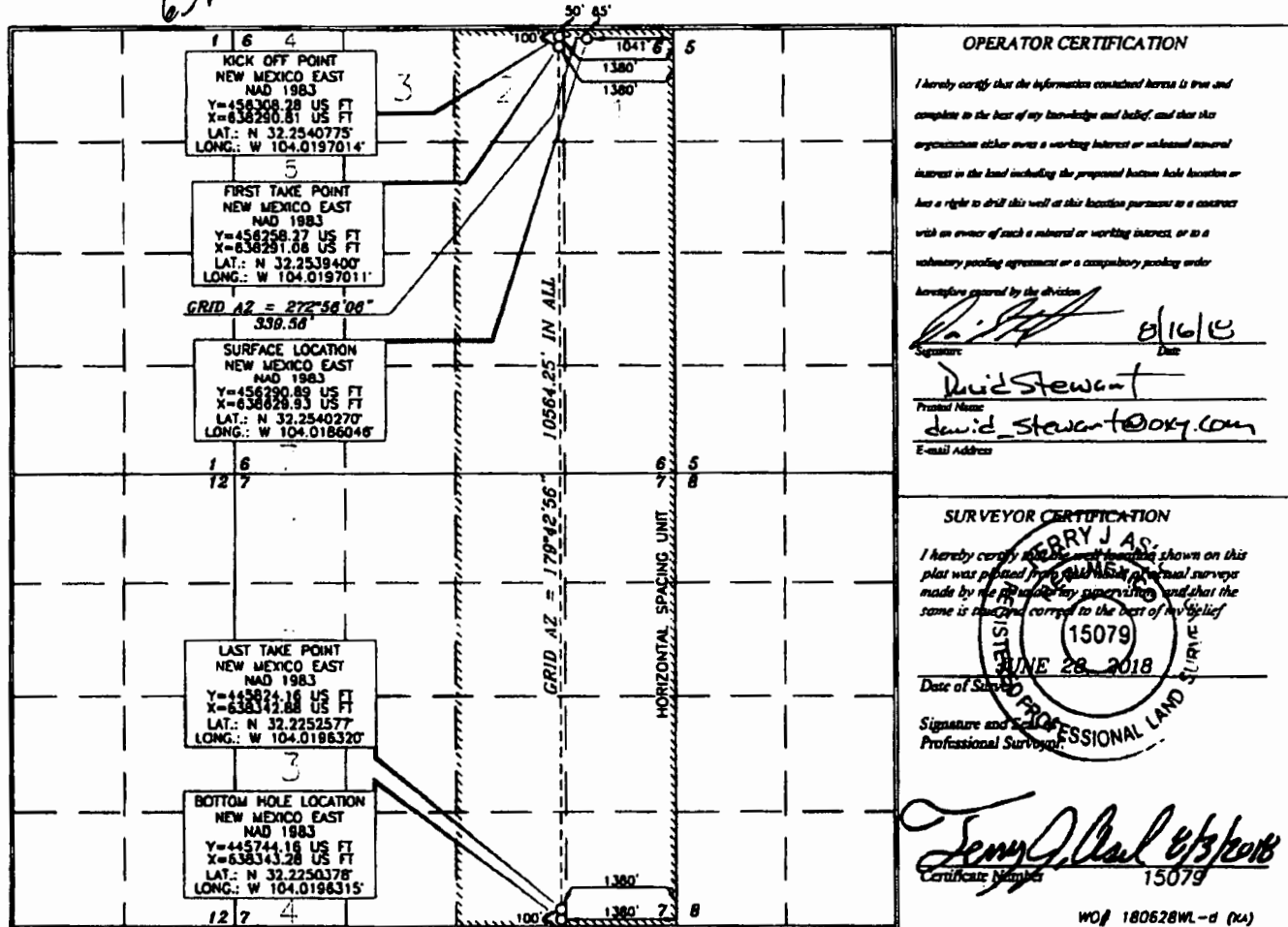
UL or lot no.	Section	Township	Range	Lot Idn	Feet from the	North/South line	Feet from the	East/West line	County
1	6	24 SOUTH	29 EAST, N.M.P.M.		65'	NORTH	1041'	EAST	EDDY

Bottom Hole Location If Different From Surface

UL or lot no.	Section	Township	Range	Lot Idn	Feet from the	North/South line	Feet from the	East/West line	County
0	7	24 SOUTH	29 EAST, N.M.P.M.		20'	SOUTH	1380'	EAST	EDDY

Dedicated Acres	Joint or Infill	Consolidation Code	Order No.
6.40	Y		

No allowable will be assigned to this completion until all interests have been consolidated or a non-standard unit has been approved by the division.



OPERATOR CERTIFICATION

I hereby certify that the information contained herein is true and complete to the best of my knowledge and belief, and that this organization either owns a working interest or undivided mineral interest in the land including the proposed bottom hole location or has a right to drill this well at this location pursuant to a contract with an owner of such a mineral or working interest, or to a voluntary pooling agreement or a compulsory pooling order.

Signature: *David Stewart* Date: **8/16/18**

Printed Name: **David Stewart**
E-mail Address: **david_stewart@oxy.com**

SURVEYOR CERTIFICATION

I hereby certify that the information shown on this plat was prepared from a valid and accurate survey made by me or under my supervision and that the same is true and correct to the best of my belief.

Date of Survey: **JUNE 28, 2018**

Signature and Seal of Professional Surveyor: *Terry J. As...*
Certificate Number: **15079**

WOP 180628WL-d (N)

RUP 12-1818 NSP Regaired

NM OIL CONSERVATION

ARTESIA DISTRICT

DEC 18 2018

Form C-102

State of New Mexico
Energy, Minerals & Natural Resources Department
OIL CONSERVATION DIVISION
1220 South St. Francis Dr.
Santa Fe, NM 87505

RECEIVED Revised August 1, 2011
Submit one copy to appropriate
District Office

☐ AMENDED REPORT

District I
1621 N. French Dr., Hobbs, NM 88240
Phone: (575) 393-6161 Fax: (575) 393-0720
District II
811 S. First St., Artesia, NM 88210
Phone: (575) 748-1283 Fax: (575) 748-9720
District III
1000 Rito Blanco Road, Aztec, NM 87410
Phone: (505) 334-6178 Fax: (505) 334-6170
District IV
1220 S. St. Francis Dr., Santa Fe, NM 87505
Phone: (505) 476-3460 Fax: (505) 476-3462

WELL LOCATION AND ACREAGE DEDICATION PLAT

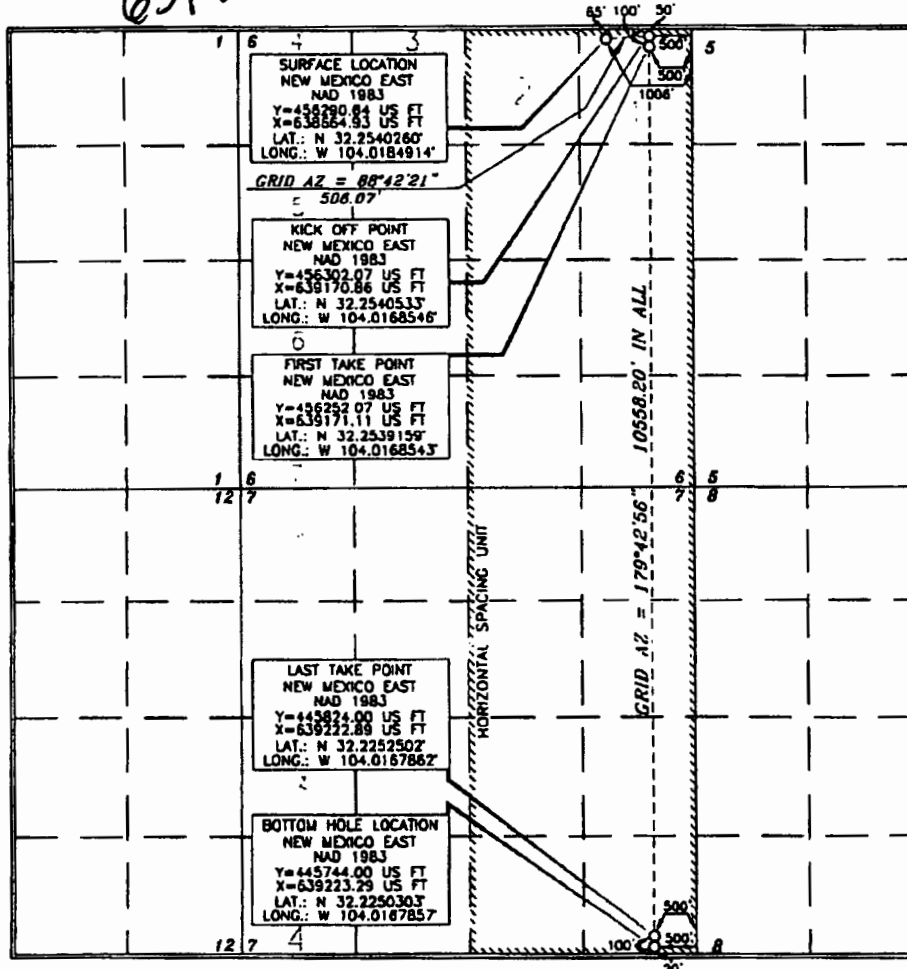
API Number 30-015-45564	Pool Code 9B220	Pool Name Purple Sage Wolfcamp
Property Code 323008	Property Name HEIGHT CC "6-7" FEDERAL COM	Well Number 36H
OGRID No. 16676	Operator Name OXY USA INC.	Elevation 2955.9'

UL or lot no.	Section	Township	Range	Lot Idn	Feet from the	North/South line	Feet from the	East/West line	County
1	6	24 SOUTH	29 EAST, N.M.P.M.		65'	NORTH	1006'	EAST	EDDY

UL or lot no.	Section	Township	Range	Lot Idn	Feet from the	North/South line	Feet from the	East/West line	County
P	7	24 SOUTH	29 EAST, N.M.P.M.		20'	SOUTH	500'	EAST	EDDY

Dedicated Acres 640	Joint or Infill Y	Consolidation Code	Order No.
-------------------------------	-----------------------------	--------------------	-----------

No allowable will be assigned to this completion until all interests have been consolidated or a non-standard unit has been approved by the division.



OPERATOR CERTIFICATION	
I hereby certify that the information contained herein is true and complete to the best of my knowledge and belief, and that this organization either owns a working interest or undivided mineral interest in the land including the proposed bottom hole location or has a right to drill this well at this location pursuant to a contract with an owner of such a mineral or working interest, or to a voluntary pooling agreement or a compulsory pooling order hereafter entered by the division.	
Signature David Stewart	Date 8/16/18
Printed Name David Stewart	
E-mail Address david.stewart@oxy.com	

SURVEYOR CERTIFICATION	
I hereby certify that the well location shown on this plat was located by actual surveys made by me or under my supervision, and that the same is true and correct to the best of my belief.	
Date of Survey JUNE 28, 2018	
Signature and Seal Terry J. As...	
Professional Surveyor	
Certificate Number 15079	
WOL 180628WL-e (NA)	

RUP
12-19-18

NSP Required

District I
1621 N. French Dr., Hobbs, NM 88240
Phone: (505) 393-4161 Fax: (505) 393-0720
District II
811 S. First St., Artesia, NM 88210
Phone: (505) 748-1283 Fax: (505) 748-9720
District III
1000 Rio Rancho Road, Santa Fe, NM 87410
Phone: (505) 334-4178 Fax: (505) 334-4170
District IV
1220 S. St. Francis Dr., Santa Fe, NM 87505
Phone: (505) 476-3460 Fax: (505) 476-3462

State of New Mexico **NM OIL CONSERVATION** Form C-102
Energy, Minerals & Natural Resources Department **ARTESIA DISTRICT** Revised August 1, 2011
OIL CONSERVATION DIVISION Submit one copy to appropriate District Office
1220 South St. Francis Dr. **DEC 14 2018**
Santa Fe, NM 87505

RECEIVED

☐ AMENDED REPORT

WELL LOCATION AND ACREAGE DEDICATION PLAT

API Number 3005-45552	Pool Code 50371	Pool Name Pierce Crossing Bare Spring
Property Code 323007	Property Name LENGTH CC "6-7" FEDERAL COM	Well Number 24H
OGRID No. 116516	Operator Name OXY USA INC.	Elevation 2958.9'

Surface Location

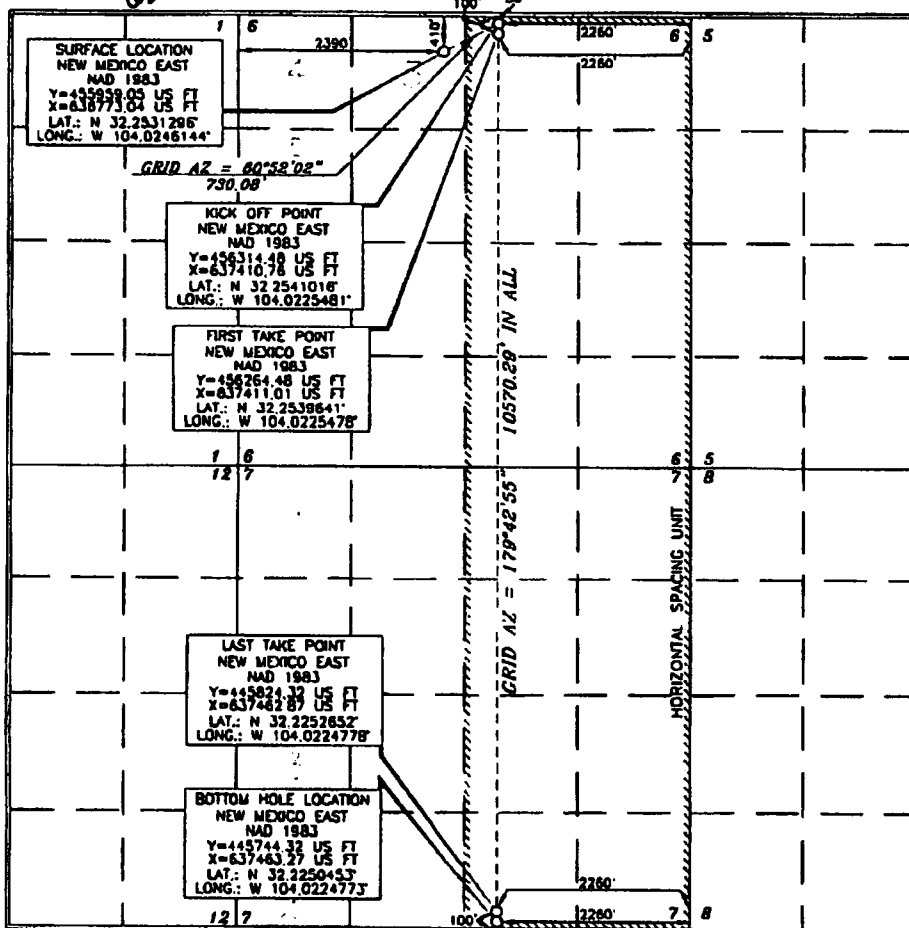
UL or lot no.	Section	Township	Range	Lot Idn	Feet from the	North/South line	Feet from the	East/West line	County
3	6	24 SOUTH	29 EAST, N.M.P.M.		410'	NORTH	2390'	WEST	EDDY

Bottom Hole Location If Different From Surface

UL or lot no.	Section	Township	Range	Lot Idn	Feet from the	North/South line	Feet from the	East/West line	County
0	7	24 SOUTH	29 EAST, N.M.P.M.		20'	SOUTH	2260'	EAST	EDDY

Dedicated Acres 640	Joint or Infill Y	Consolidation Code	Order No.
-------------------------------	-----------------------------	--------------------	-----------

No allowable will be assigned to this completion until all interests have been consolidated or a non-standard unit has been approved by the division.



OPERATOR CERTIFICATION

I hereby certify that the information contained herein is true and complete to the best of my knowledge and belief, and that this organization either owns a working interest or undivided mineral interest in the land including the proposed bottom hole location or has a right to drill this well at this location pursuant to a contract with an owner of such a mineral or working interest, or to a voluntary pooling agreement or a compulsory pooling order.

Signature: *David Stewart* Date: **12/11/18**
Printed Name: **David Stewart**
E-mail Address: **david.stewart@oxy.com**

SURVEYOR CERTIFICATION

I hereby certify that the work shown on this plat was based on the best of my knowledge and belief, and that the same is true and correct to the best of my knowledge.

Date of Survey: **12/11/18**
Signature and Seal: *Terry J. As...*
Professional Surveyor: **15079**

Certificate Number: **15079**

WQ/ 180607WL-b (10)

RW 12-17-18

NM OIL CONSERVATION
ARTESIA DISTRICT

DEC 18 2018

Form C-102

Revised August 1, 2011

State of New Mexico
Energy, Minerals & Natural Resources Department
OIL CONSERVATION DIVISION
1220 South St. Francis Dr.
Santa Fe, NM 87505

RECEIVED

Submit one copy to appropriate District Office

☐ AMENDED REPORT

District I
1621 N. French Dr., Hobbs, NM 88240
Phone: (575) 393-6161 Fax: (575) 393-0720
District II
811 S. First St., Artesia, NM 88210
Phone: (575) 748-1281 Fax: (575) 748-9720
District III
1000 Rio Grande Road, Artesia, NM 87410
Phone: (505) 334-6178 Fax: (505) 334-6170
District IV
1230 S. St. Francis Dr., Santa Fe, NM 87505
Phone: (505) 476-3460 Fax: (505) 476-3462

WELL LOCATION AND ACREAGE DEDICATION PLAT

API Number 30-05-45566	Pool Code 50371	Pool Name Pierce Crossing Bone Springs
Property Code 323007	Property Name LENGTH CC "6-7" FEDERAL COM	Well Number 25H
OGRID No. 16696	Operator Name OXY USA INC.	Elevation 2956.3'

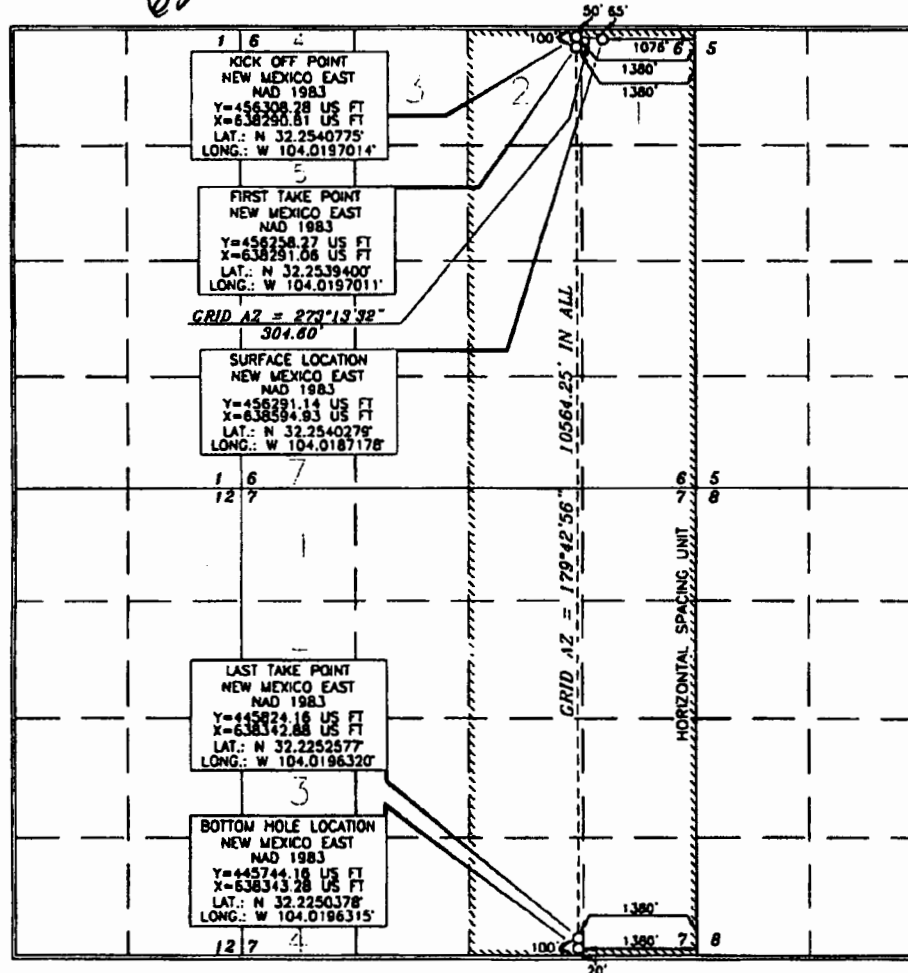
Surface Location

UL or lot no.	Section	Township	Range	Lot Ida	Feet from the	North/South line	Feet from the	East/West line	County
1	6	24 SOUTH	29 EAST, N.M.P.M.		65'	NORTH	1076'	EAST	EDDY

Bottom Hole Location If Different From Surface

UL or lot no.	Section	Township	Range	Lot Ida	Feet from the	North/South line	Feet from the	East/West line	County
0	7	24 SOUTH	29 EAST, N.M.P.M.		20'	SOUTH	1380'	EAST	EDDY
Dedicated Acres 640	Joint or Infill Y	Consolidation Code	Order No.						

No allowable will be assigned to this completion until all interests have been consolidated or a non-standard unit has been approved by the division.



OPERATOR CERTIFICATION

I hereby certify that the information contained herein is true and complete to the best of my knowledge and belief, and that this organization either owns a working interest or undivided mineral interest in the land including the proposed bottom hole location or has a right to drill this well at this location pursuant to a contract with an owner of such a mineral or working interest, or to a voluntary pooling agreement or a compulsory pooling order heretofore entered by the division.

Signature: *David Stewart* Date: **8/21/18**

Printed Name: **David Stewart**

E-mail Address: **David.Stewart@oem.com**

SURVEYOR CERTIFICATION

I hereby certify that the well location shown on this plat was plotted from a true horizontal survey made by me or under my supervision, and that the same is true and correct to the best of my belief.

Date of Survey: **JUNE 28, 2018**

Signature and Seal of Professional Surveyor: *Terry J. As...*

Certificate Number: **15079**

WO# 180628WL-b (NA)

Ref 12-19-18

NM OIL CONSERVATION

ARTESIA DISTRICT

DEC 18 2018

Form C-102

District I
1621 N. French Dr., Hobbs, NM 88240
Phone: (575) 393-6161 Fax: (575) 393-0720
District II
811 S. First St., Artesia, NM 88210
Phone: (575) 748-1283 Fax: (575) 748-0720
District III
1020 Run Between Road, Alamo, NM 87410
Phone: (505) 334-6178 Fax: (505) 334-6170
District IV
1220 S. St. Francis Dr., Santa Fe, NM 87505
Phone: (505) 476-3460 Fax: (505) 476-3462

State of New Mexico
Energy, Minerals & Natural Resources Department
OIL CONSERVATION DIVISION
1220 South St. Francis Dr.
Santa Fe, NM 87505

RECEIVED Revised August 1, 2011
Submit one copy to appropriate
District Office

☐ AMENDED REPORT

WELL LOCATION AND ACREAGE DEDICATION PLAT

API Number 30-015-45567	Pool Code 50371	Pool Name Pierre Crossing Bone Springs
Property Code 323007	Property Name LENGTH CC "6-7" FEDERAL COM	Well Number 26H
OGRID No. 16696	Operator Name OXY USA INC.	Elevation 2955.6'

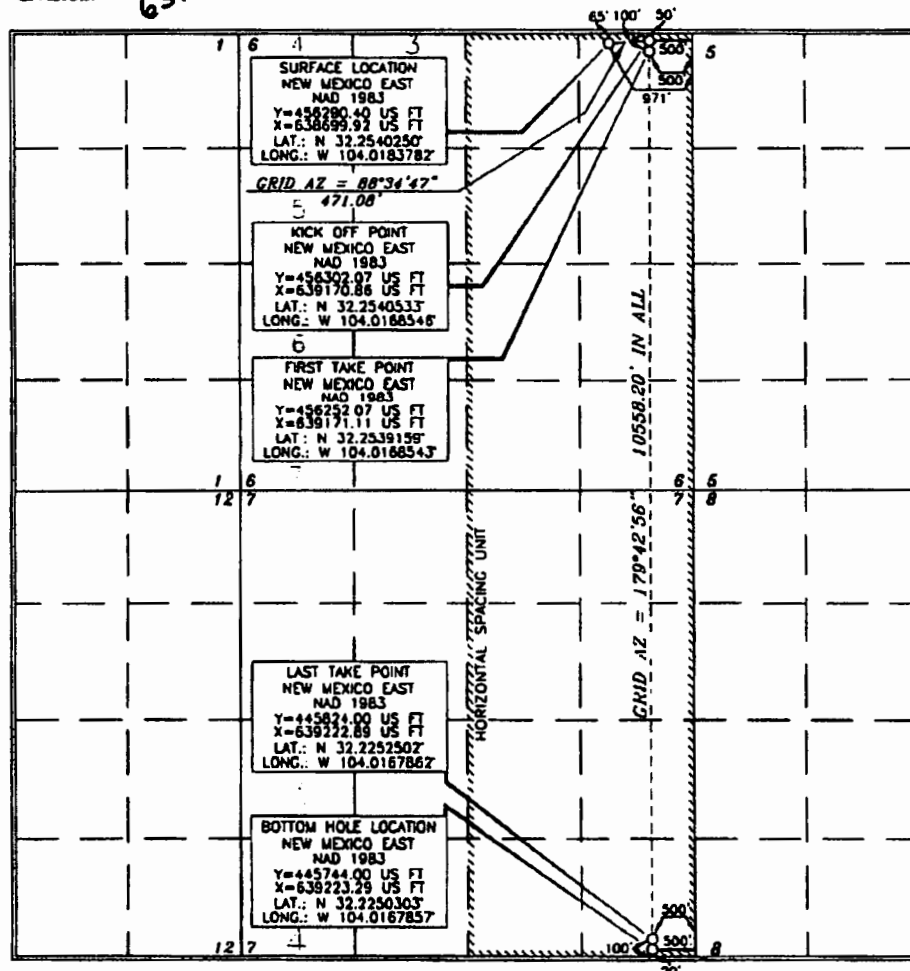
Surface Location

UL or lot no.	Section	Township	Range	Lot Idn	Feet from the	North/South line	Feet from the	East/West line	County
1	6	24 SOUTH	29 EAST, N.M.P.M.		65'	NORTH	971'	EAST	EDDY

Bottom Hole Location If Different From Surface

UL or lot no.	Section	Township	Range	Lot Idn	Feet from the	North/South line	Feet from the	East/West line	County
P	7	24 SOUTH	29 EAST, N.M.P.M.		20'	SOUTH	500'	EAST	EDDY
Dedicated Acres 640	Joint or Infill Y	Consolidation Code	Order No.						

No allowable will be assigned to this completion until all interests have been consolidated or a non-standard unit has been approved by the division.



OPERATOR CERTIFICATION

I hereby certify that the information contained herein is true and complete to the best of my knowledge and belief, and that this organization either owns a working interest or undivided mineral interest in the land including the proposed bottom hole location or has a right to drill this well at this location pursuant to a contract with an owner of such a mineral or working interest, or to a voluntary pooling agreement or a compulsory pooling order.

Hereby attested by the division

Signature: David Stewart Date: 12/18/18

Printed Name: David Stewart

E-mail Address: David.Stewart@oxy.com

SURVEYOR CERTIFICATION

I hereby certify that the information shown on this plat was taken from field notes of actual survey made by me or under my supervision and that the same is true and correct to the best of my belief.

Date of Survey: JUNE 26, 2018

Signature and Seal: Terry J. Asch
Professional Surveyor

Certificate Number: 15079

WOF 180626WL-1 (NA)

RWP 12-19-18

District I
1625 N. French Dr., Hobbs, NM 88240
Phone: (575) 393-6161 Fax: (575) 393-0720
District II
811 S. First St., Artesia, NM 88210
Phone: (575) 748-1283 Fax: (575) 748-9728
District III
1000 Rio Bonito Road, Aztec, NM 87410
Phone: (505) 334-6178 Fax: (505) 334-6170
District IV
1220 S. St. Francis Dr., Santa Fe, NM 87505
Phone: (505) 476-3460 Fax: (505) 476-3462

State of New Mexico
Energy, Minerals & Natural Resources Department
OIL CONSERVATION DIVISION
1220 South St. Francis Dr.
Santa Fe, NM 87505

Form C-102
Revised August 1, 2011
Submit one copy to appropriate
District Office

☒ AMENDED REPORT

WELL LOCATION AND ACREAGE DEDICATION PLAT

API Number 30-015-45572	Pool Code 50371	Pool Name Pierce Crossing, Blue Spring
Property Code 323065	Property Name HEIGHT CC "6-7" FEDERAL COM	Well Number 312H
QGRID No. 16696	Operator Name OXY USA INC.	Elevation 2957.2'

Surface Location

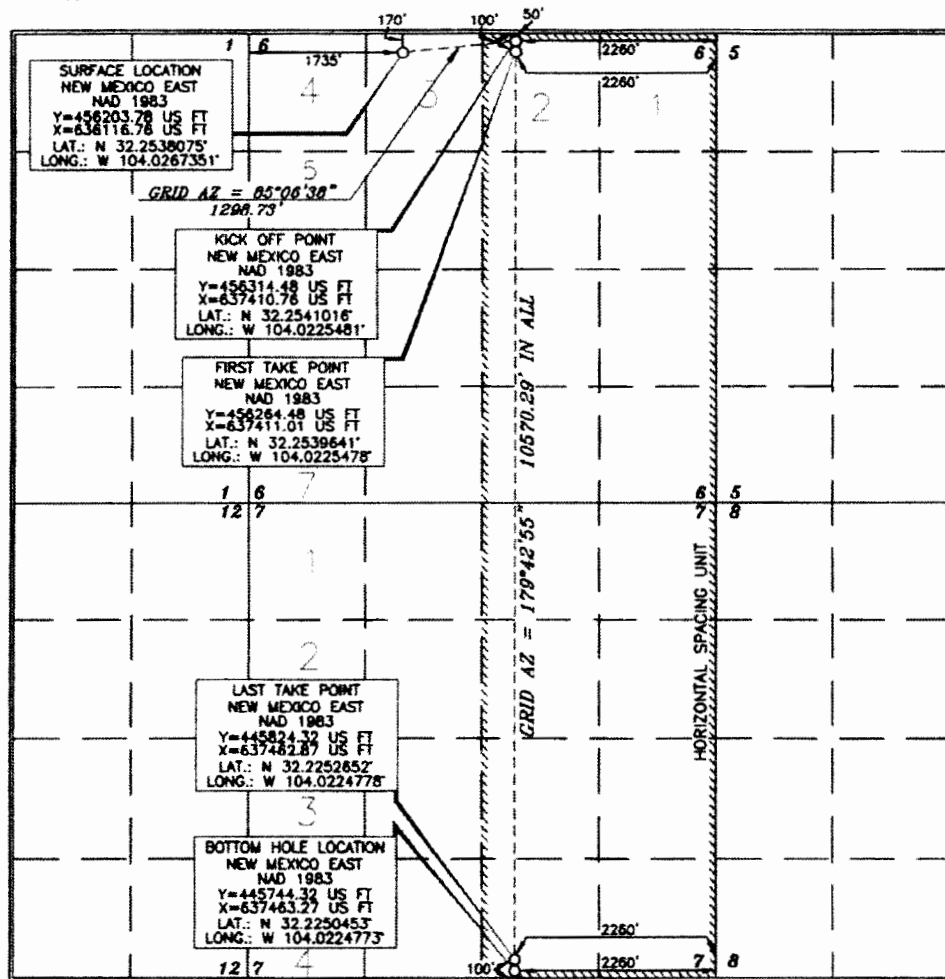
UL or lot no.	Section	Township	Range	Lot Ida	Feet from the	North/South line	Feet from the	East/West line	County
3	6	24 SOUTH	29 EAST, N.M.P.M.		170'	NORTH	1735'	WEST	EDDY

Bottom Hole Location If Different From Surface

UL or lot no.	Section	Township	Range	Lot Ida	Feet from the	North/South line	Feet from the	East/West line	County
0	7	24 SOUTH	29 EAST, N.M.P.M.		20'	SOUTH	2280'	EAST	EDDY

Dedicated Acres 640	Joint or Infill	Consolidation Code	Order No.
-------------------------------	-----------------	--------------------	-----------

No allowance will be assigned to this completion until all interests have been consolidated or a non-standard unit has been approved by the division.



OPERATOR CERTIFICATION

I hereby certify that the information contained herein is true and complete to the best of my knowledge and belief, and that this organization either owns a working interest or undivided mineral interest in the land including the proposed bottom hole location or has a right to drill this well at this location pursuant to a contract with an owner of such a mineral or working interest, or to a voluntary pooling agreement or a compulsory pooling order.

Hereby entered by the division.

Sarah Chapman 4/15/19
Signature Date

Sarah Chapman
Printed Name

Sarah.Chapman@oxy.com
E-mail Address

SURVEYOR CERTIFICATION

I hereby certify that the well location shown on this plat was located from the actual surveys made by me or under my supervision, and that the same is true and correct to the best of my belief.

TERRY J. ASH
Date of Survey
15079

TERRY J. ASH
Signature and Seal of Professional Surveyor

Terry Ash 4/5/2019
Certificate Number 15079

NM OIL CONSERVATION
ARTESIA DISTRICT

JAN 03 2019

Form C-102

State of New Mexico
Energy, Minerals & Natural Resources Department
OIL CONSERVATION DIVISION
1220 South St. Francis Dr.
Santa Fe, NM 87505

RECEIVED

Revised August 1, 2011

Submit one copy to appropriate
District Office

☐ AMENDED REPORT

District I
1625 N. French Dr., Hobbs, NM 88240
Phone: (575) 793-6161 Fax: (575) 793-0720
District II
811 S. First St., Lordsburg, NM 88026
Phone: (575) 748-1281 Fax: (575) 748-4720
District III
1000 Rio Grande Road, Aztec, NM 87410
Phone: (505) 234-6178 Fax: (505) 234-6170
District IV
1220 S. St. Francis Dr., Santa Fe, NM 87505
Phone: (505) 476-3460 Fax: (505) 476-3462

WELL LOCATION AND ACREAGE DEDICATION PLAT

API Number 30-015-45573	Pool Code 50371	Pool Name Pierce Crossing Bone Springs
Property Code 323065	Property Name WIDTH CC "6_7" FEDERAL COM	Well Number 14H
OGRID No. 16696	Operator Name OXY USA INC.	Elevation 2956.5'

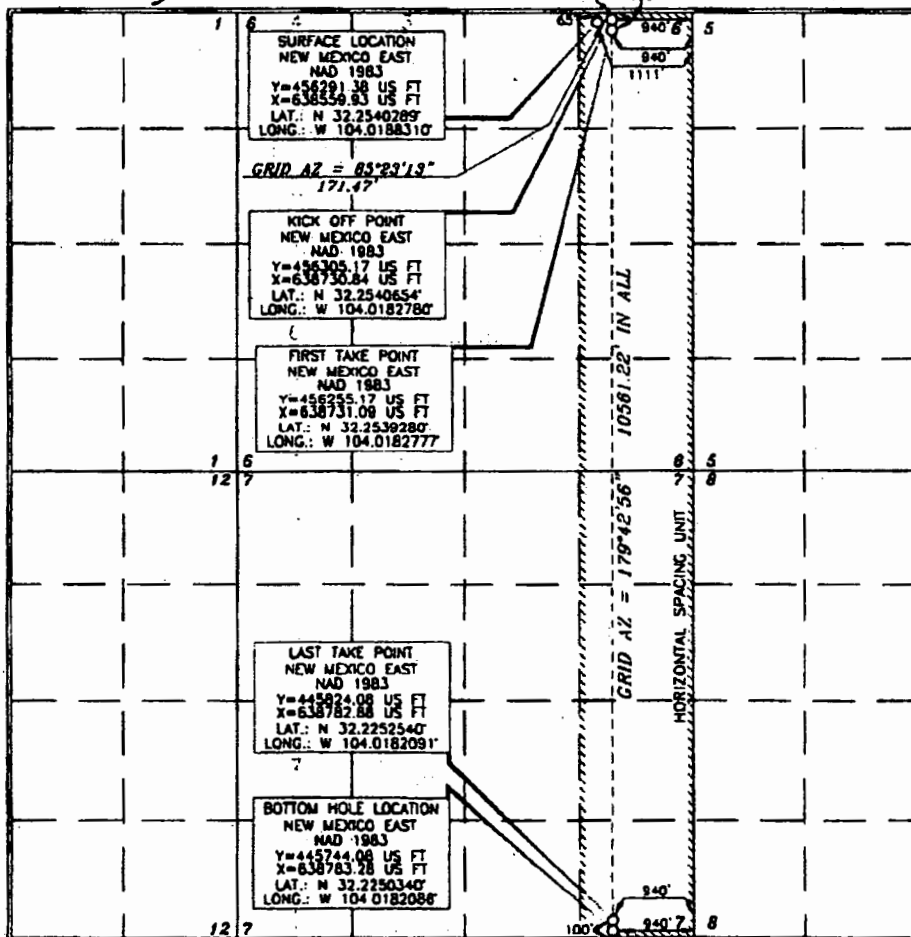
UL or lot no.	Section	Township	Range	Lot Idn	Feet from the	North/South line	Feet from the	East/West line	County
1	6	24 SOUTH	29 EAST, N.M.P.M.		65'	NORTH	1111'	EAST	EDDY

UL or lot no.	Section	Township	Range	Lot Idn	Feet from the	North/South line	Feet from the	East/West line	County
P	7	24 SOUTH	29 EAST, N.M.P.M.		20'	SOUTH	940'	EAST	EDDY

Dedicated Acres 320	Joint or Infill Y	Consolidation Code	Order No.
-------------------------------	-----------------------------	--------------------	-----------

No allowable will be assigned to this completion until all interests have been consolidated or a non-standard unit has been approved by the division.

319.93



OPERATOR CERTIFICATION	
I hereby certify that the information contained herein is true and complete to the best of my knowledge and belief, and that this organization either owns a working interest or a mineral interest in the land including the proposed bottom hole location or has a right to drill this well at this location pursuant to a contract with an owner of such a mineral or working interest, or to a voluntary pooling agreement or a compulsory pooling order hereinafter entered by the division.	
Signature <i>David Stewart</i>	Date 8/23/18
Printed Name David Stewart	
E-mail Address David.Stewart@oxy.com	
SURVEYOR CERTIFICATION	
I hereby certify that the well location shown on this plat was plotted from field notes and previous surveys made by me or by my supervising and that the same is true and correct to the best of my belief.	
Date of Survey JUNE 28, 2018	
Signature and Seal <i>Terry J. Asch</i>	
Professional Surveyor 15079	
Certificate Number 15079	
WO# 180626WL-c (NW)	

RWP 1-2-19

Old Well Name (If applicable)	Well Name	API	Surface Location	Pool	POOL CODE
Time CC 6 7 Federal Com #041H	Width CC 6 7 Federal Com #017H	30-015-45629	C-06-24S-29E	PIERCE CROSSING; BONE SPRING	50371
Time CC 6 7 Federal Com #042H	Width CC 6 7 Federal Com #016H	30-015-45575	C-06-24S-29E	PIERCE CROSSING; BONE SPRING	50371
N/A	Height CC 6 7 Federal Com #031Y	30-015-45770	D-06-24S-29E	PURPLE SAGE; WOLFCAMP	98220
N/A	Height CC 6 7 Federal Com #032H	30-015-45554	D-06-24S-29E	PURPLE SAGE; WOLFCAMP	98220
N/A	Height CC 6 7 Federal Com #033H	30-015-45561	C-06-24S-29E	PURPLE SAGE; WOLFCAMP	98220
N/A	Length CC 6 7 Federal Com #021H	30-015-45553	D-06-24S-29E	PIERCE CROSSING; BONE SPRING	50371
N/A	Length CC 6 7 Federal Com #022H	30-015-45565	D-06-24S-29E	PIERCE CROSSING; BONE SPRING	50371
N/A	Length CC 6 7 Federal Com #023H	30-015-45551	C-06-24S-29E	PIERCE CROSSING; BONE SPRING	50371
N/A	Width CC 6 7 Federal Com #011H	30-015-45571	C-06-24S-29E	PIERCE CROSSING; BONE SPRING	50371
N/A	Height CC 6 7 Federal Com #311H	30-015-45630	C-06-24S-29E	PIERCE CROSSING; BONE SPRING	50371
Time CC 6 7 Federal Com #043H	Width CC 6 7 Federal Com #015H	30-015-45576	A-06-24S-29E	PIERCE CROSSING; BONE SPRING	50371
N/A	Time CC 6 7 Federal Com #044H	30-015-45577	A-06-24S-29E	PURPLE SAGE; WOLFCAMP	98220
N/A	Height CC 6 7 Federal Com #034H	30-015-45562	C-06-24S-29E	PURPLE SAGE; WOLFCAMP	98220
N/A	Height CC 6 7 Federal Com #035H	30-015-45563	A-06-24S-29E	PURPLE SAGE; WOLFCAMP	98220
N/A	Height CC 6 7 Federal Com #036H	30-015-45564	A-06-24S-29E	PURPLE SAGE; WOLFCAMP	98220
N/A	Length CC 6 7 Federal Com #024H	30-015-45552	C-06-24S-29E	PIERCE CROSSING; BONE SPRING	50371
N/A	Length CC 6 7 Federal Com #025H	30-015-45566	A-06-24S-29E	PIERCE CROSSING; BONE SPRING	50371
N/A	Length CC 6 7 Federal Com #026H	30-015-45567	A-06-24S-29E	PIERCE CROSSING; BONE SPRING	50371
N/A	Height CC 6 7 Federal Com #312H	30-015-45572	C-06-24S-29E	PIERCE CROSSING; BONE SPRING	50371
N/A	Width CC 6 7 Federal Com #014H	30-015-45573	A-06-24S-29E	PIERCE CROSSING; BONE SPRING	50371