

1FVI4-191114-C-107B 628

Revised March 23, 2017

RECEIVED: 11/14/19	REVIEWER: DM	TYPE: PLC	APP NO: pDM1933730122
--------------------	--------------	-----------	-----------------------

ABOVE THIS TABLE FOR OCD DIVISION USE ONLY

NEW MEXICO OIL CONSERVATION DIVISION
 - Geological & Engineering Bureau -
 1220 South St. Francis Drive, Santa Fe, NM 87505

**ADMINISTRATIVE APPLICATION CHECKLIST**

THIS CHECKLIST IS MANDATORY FOR ALL ADMINISTRATIVE APPLICATIONS FOR EXCEPTIONS TO DIVISION RULES AND
 REGULATIONS WHICH REQUIRE PROCESSING AT THE DIVISION LEVEL IN SANTA FE

Applicant: Matador Production Company**OGRID Number:** 228937**Well Name:** Rodney Robinson Federal #101H, #102H, #121H, #122H, #201H, #202H**API:** 30-025-46278, -46279, -46371, -46335, -46372, -46373**Pool:** Pronghorn; Bone Spring & WC-025 G-09 S223332A; Upr Wolfcamp**Pool Code:** 96228 & 98177

**SUBMIT ACCURATE AND COMPLETE INFORMATION REQUIRED TO PROCESS THE TYPE OF APPLICATION
 INDICATED BELOW**

1) TYPE OF APPLICATION: Check those which apply for [A]

A. Location – Spacing Unit – Simultaneous Dedication

☐ NSL☐ NSP (PROJECT AREA)☐ NSP (PRORATION UNIT)☐ SD

B. Check one only for [I] or [II]

[I] Commingling – Storage – Measurement

☐ DHC☐ CTB☒ PLC☐ PC☐ OLS☐ OLM

[II] Injection – Disposal – Pressure Increase – Enhanced Oil Recovery

☐ WFX☐ PMX☐ SWD☐ IPI☐ EOR☐ PPR**2) NOTIFICATION REQUIRED TO:** Check those which apply.A. ☐ Offset operators or lease holdersB. ☒ Royalty, overriding royalty owners, revenue ownersC. ☐ Application requires published noticeD. ☐ Notification and/or concurrent approval by SLOE. ☒ Notification and/or concurrent approval by BLMF. ☐ Surface ownerG. ☒ For all of the above, proof of notification or publication is attached, and/or,H. ☐ No notice required**FOR OCD ONLY**☐ Notice Complete☐ Application
Content
Complete

- 3) CERTIFICATION:** I hereby certify that the information submitted with this application for administrative approval is **accurate** and **complete** to the best of my knowledge. I also understand that **no action** will be taken on this application until the required information and notifications are submitted to the Division.

Note: Statement must be completed by an individual with managerial and/or supervisory capacity.

Kaitlyn A. Luck

Print or Type Name

Signature

11/14/19

Date

505-954-7286

Phone Number

kaluck@hollandhart.com

e-mail Address



Kaitlyn A. Luck
Phone (505) 954-7286
Fax (505) 819-5579
kaluck@hollandhart.com

November 14, 2019

VIA ONLINE FILING

Adrienne Sandoval
Director, Oil Conservation Division
New Mexico Department of Energy,
Minerals and Natural Resources
1220 South Saint Francis Drive
Santa Fe, New Mexico 87505

Re: Application of Matador Production Company to authorize pool commingling, off-lease storage, off lease measurement, and off-lease marketing at the Rodney Robinson North Tank Battery located in the N/2 NW/4 of Section 6, Township 23 South, Range 33 East, NMPM, Lea County, New Mexico.

Dear Ms. Sandoval:

Pursuant to 19.15.12.7 NMAC, individual spacing units are considered separate “leases” for surface commingling purposes. Accordingly, Matador Production Company (OGRID No. 228937) seeks administrative approval for pool commingling, off-lease storage, off-lease measurement, and off-lease marketing at the Rodney Robinson North Tank Battery of production from the Pronghorn; Bone Spring (96228); and the WC-025 G-09 S223332A; Upr Wolfcamp (98177) pools from *all existing and future wells drilled in the following “leases”*:

(a) The 299.32-acre, more or less, spacing unit in the Pronghorn; Bone Spring (96228) underlying the W/2 W/2 of Sections 6 and 7. The spacing unit is currently dedicated to the **Rodney Robinson Federal #101H well** (API No. 30-025-46278) and the **Rodney Robinson Federal #121H well** (API No. 30-025-46371);

(b) The 320.03-acre, more or less, spacing unit in the Pronghorn; Bone Spring (96228) underlying the E/2 W/2 of Sections 6 and 7. The spacing unit is currently dedicated to the **Rodney Robinson Federal #102H well** (API No. 30-025-46279) and the **Rodney Robinson Federal #122H well** (API No. 30-025-46335);

(c) The 299.32-acre, more or less, spacing unit in the WC-025 G-09 S223332A; Upr Wolfcamp (98177) underlying the W/2 W/2 of Sections 6 and 7. The spacing unit is currently dedicated to the **Rodney Robinson Federal #201H well** (API No. 30-025-46372);

(d) The 320.03-acre, more or less, spacing unit in the WC-025 G-09 S223332A; Upr Wolfcamp (98177) underlying the E/2 W/2 of Sections 6 and 7. The spacing unit is

currently dedicated to the **Rodney Robinson Federal #202H well** (API No. 30-025-46373); and

(e) Pursuant to 19.15.12.10.C(4)(g), *future spacing units connected to this central tank battery* with notice provided only to the interest owners within these future “leases.”

Oil and gas production from these “leases” will be commingled and sold at the Rodney Robinson North Tank Battery located in the N/2 NW/4 of Section 6. Prior to commingling, gas production from each “lease” will be separately metered using individual test separators with calibrated orifice meters that are manufactured to AGA specifications. Oil production from each “lease” will also be separately metered using turbine meters.

Exhibit 1 is a land plat showing Matador’s current development plan, flow lines, and central tank battery (“production facility”) in the subject area. The plat identifies the wellbores, the existing spacing units, and the common surface facilities located in the N/2 NW/4 of Section 6.

Exhibit 2 is a C-102 for each of the wells currently permitted or drilled within the existing spacing units. None of these wells are producing and there are no available production reports.

Exhibit 3 is a completed Application for Surface Commingling (Diverse Ownership) Form C-107-B, that includes a statement from Benjamin D. Peterson, P.E., Senior Production Engineer with Matador, identifying the facilities and the measurement devices to be utilized, a detailed schematic of the surface facilities (attachment A to the statement) and a referenced gas sample (attachment B to the statement).

Exhibit 4 reflects the Bureau of Land Management was provided notice of this application by certified mail return receipt requested. There are no other interest owners (including any owners of royalty or overriding royalty interests) affected by this application.

Thank you for your attention to this matter, and please feel free to call if you have any questions or require additional information.

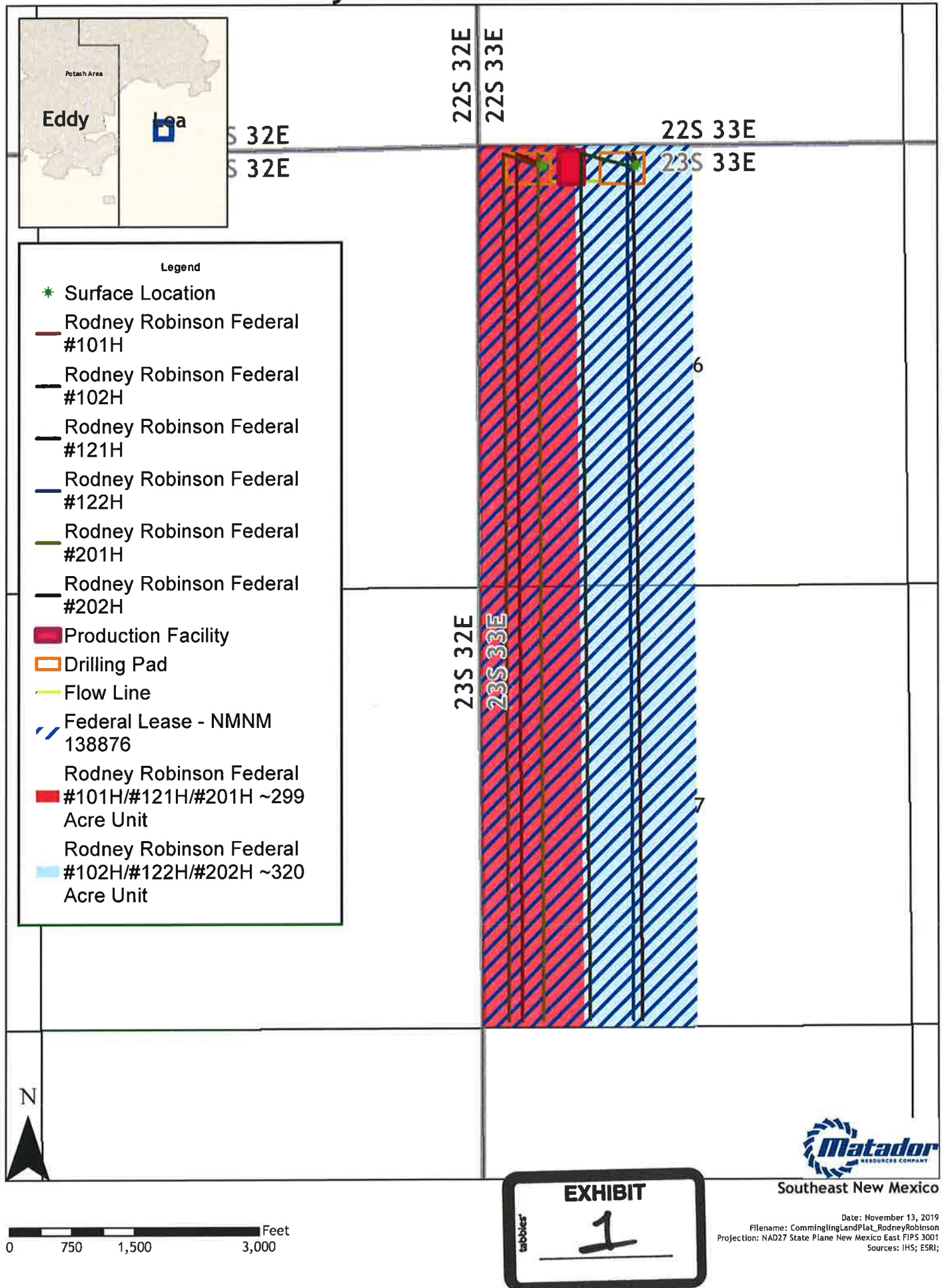
Sincerely,



Kaitlyn A. Luck

**ATTORNEY FOR MATADOR PRODUCTION
COMPANY**

Rodney Robinson W2 Land Plat



District I
1625 N. French Dr., Hobbs, NM 88240
Phone: (575) 393-6161 Fax: (575) 393-0720
District II
811 S. First St., Artesia, NM 88210
Phone: (575) 748-1283 Fax: (575) 748-9720
District III
1000 Rio Brazos Road, Aztec, NM 87410
Phone: (505) 334-6178 Fax: (505) 334-6170
District IV
1220 S. St. Francis Dr., Santa Fe, NM 87505
Phone: (505) 476-3460 Fax: (505) 476-3462

State of New Mexico
Energy, Minerals & Natural Resources
Department
OIL CONSERVATION DIVISION
1220 South St. Francis Dr.
Santa Fe, NM 87505

FORM C-102

Revised August 1, 2011

Submit one copy to appropriate

District Office

☐ AMENDED REPORT

WELL LOCATION AND ACREAGE DEDICATION

¹ API Number 30-025-46278	² Pool Code 96228	³ Pool Name PRONGHORN; BONE SPRING
⁴ Property Code 326002	⁵ Property Name RODNEY ROBINSON FEDERAL	⁶ Well Number 101H
⁷ GRID No. 228937	⁸ Operator Name MATADOR PRODUCTION COMPANY	⁹ Elevation 3738'

¹⁰Surface Location

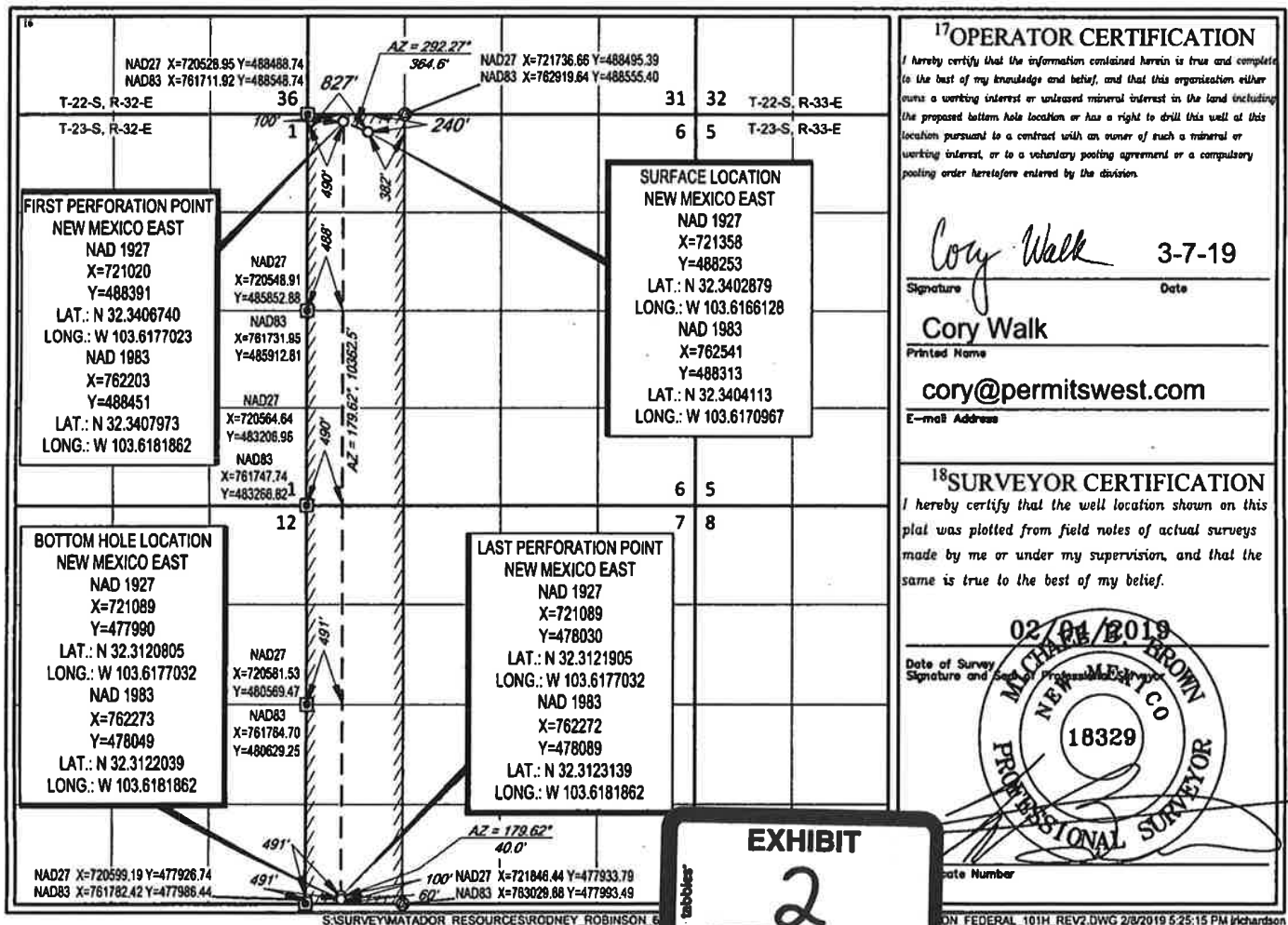
UL or lot no.	Section	Township	Range	Lot Idn	Feet from the	North/South line	Feet from the	East/West line	County
4	6	23-S	33-E	-	240'	NORTH	827'	WEST	LEA

¹¹Bottom Hole Location If Different From Surface

UL or lot no.	Section	Township	Range	Lot Idn	Feet from the	North/South line	Feet from the	East/West line	County
4	7	23-S	33-E	-	60'	SOUTH	491'	WEST	LEA

¹² Dedicated Acres 291.08 299.72	¹³ Joint or Infill	¹⁴ Consolidation Code	¹⁵ Order No.
---	-------------------------------	----------------------------------	-------------------------

No allowable will be assigned to this completion until all interests have been consolidated or a non-standard unit has been approved by the division.



District I
1625 N. French Dr., Hobbs, NM 88240
Phone: (575) 393-6161 Fax: (575) 393-0720
District II
811 S. First St., Artesia, NM 88210
Phone: (575) 748-1283 Fax: (575) 748-9720
District III
1000 Rio Brazos Road, Aztec, NM 87410
Phone: (505) 334-6178 Fax: (505) 334-6170
District IV
1220 S. St. Francis Dr., Santa Fe, NM 87505
Phone: (505) 476-3460 Fax: (505) 476-3462

State of New Mexico
Energy, Minerals & Natural Resources
Department
OIL CONSERVATION DIVISION
1220 South St. Francis Dr.
Santa Fe, NM 87505

FORM C-102

Revised August 1, 2011

Submit one copy to appropriate

District Office

☐ AMENDED REPORT

WELL LOCATION AND ACREAGE DEDICATION PLAT

¹ API Number 30-025- 46279	² Pool Code 96228	³ Pool Name PRONGHORN; BONE SPRING
⁴ Property Code 326002	⁵ Property Name RODNEY ROBINSON FEDERAL	⁶ Well Number 102H
⁷ GRID No. 228937	⁸ Operator Name MATADOR PRODUCTION COMPANY	⁹ Elevation 3732'

¹⁰Surface Location

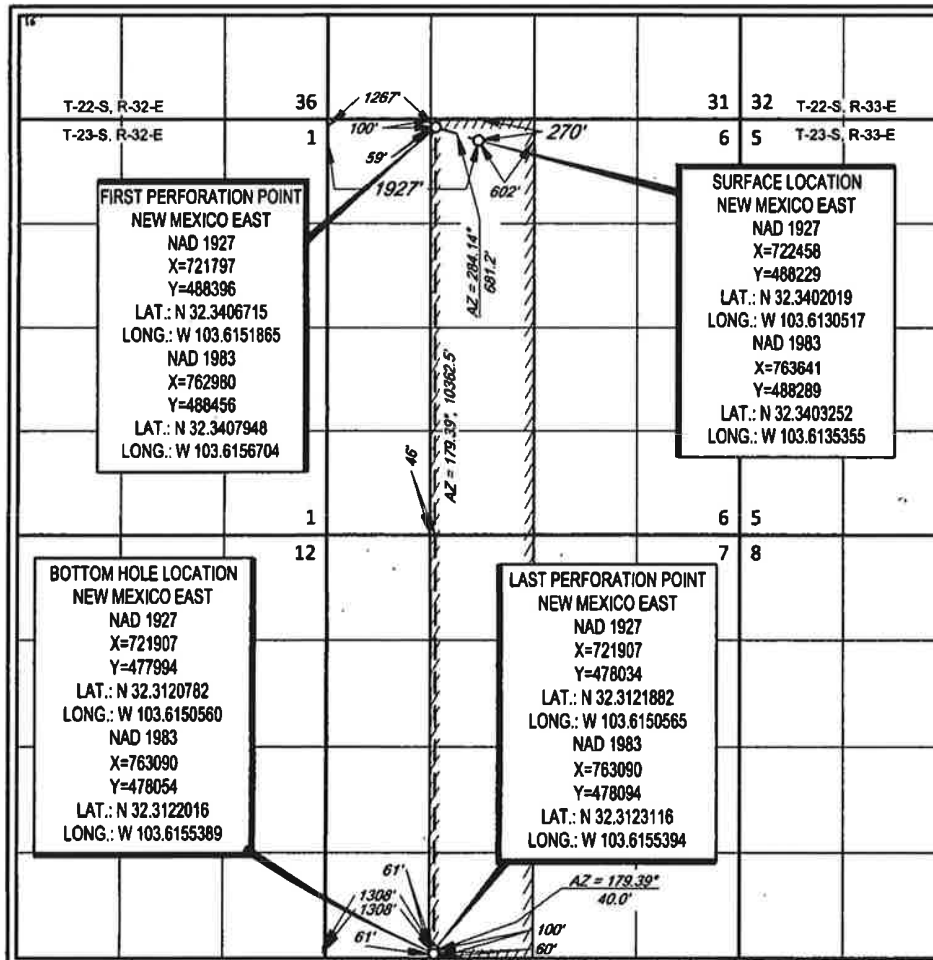
UL or lot no.	Section	Township	Range	Lot Idn	Feet from the	North/South line	Feet from the	East/West line	County
3	6	23-S	33-E	-	270'	NORTH	1927'	WEST	LEA

¹¹Bottom Hole Location If Different From Surface

UL or lot no.	Section	Township	Range	Lot Idn	Feet from the	North/South line	Feet from the	East/West line	County
N	7	23-S	33-E	-	60'	SOUTH	1308'	WEST	LEA

¹² Dedicated Acres 320.01 720.03	¹³ Joint or Infill	¹⁴ Consolidation Code	¹⁵ Order No.
---	-------------------------------	----------------------------------	-------------------------

No allowable will be assigned to this completion until all interests have been consolidated or a non-standard unit has been approved by the division.

¹⁷OPERATOR CERTIFICATION

I hereby certify that the information contained herein is true and complete to the best of my knowledge and belief, and that this organization either owns a working interest or unleased mineral interest in the land including the proposed bottom hole location or has a right to drill this well at this location pursuant to a contract with an owner of such a mineral or working interest, or to a voluntary pooling agreement or a compulsory pooling order heretofore entered by the division.

Cory Walk 3-22-19
Signature Date
Cory Walk
Printed Name
cory@permitswest.com
E-mail Address

¹⁸SURVEYOR CERTIFICATION

I hereby certify that the well location shown on this plat was plotted from field notes of actual surveys made by me or under my supervision, and that the same is true to the best of my belief.

02/04/2019
Date of Survey
Signature and Seal of Professional Surveyor
ANGEL M. BARRA
NEW MEXICO
25116
PROFESSIONAL SURVEYOR
Certificate Number

District I
1625 N. French Dr., Hobbs, NM 88240
Phone: (575) 393-6161 Fax: (575) 393-0720
District II
811 S. First St., Artesia, NM 88210
Phone: (575) 748-1283 Fax: (575) 748-9720
District III
1000 Rio Brazos Road, Aztec, NM 87410
Phone: (505) 334-6178 Fax: (505) 334-6170
District IV
1220 S. St. Francis Dr., Santa Fe, NM 87505
Phone: (505) 476-3460 Fax: (505) 476-3462

State of New Mexico
Energy, Minerals & Natural Resources
Department
OIL CONSERVATION DIVISION
1220 South St. Francis Dr.
Santa Fe, NM 87505

FORM C-102

Revised August 1, 2011
Submit one copy to appropriate
District Office

AMENDED REPORT

WELL LOCATION AND ACREAGE DEDICATION PLAT

¹ API Number 30-025-46371	² Pool Code 96228	³ Pool Name PRONGHORN; BONE SPRING
⁴ Property Code 326002	⁵ Property Name RODNEY ROBINSON FEDERAL	⁶ Well Number 121H
⁷ GRID No. 228937	⁸ Operator Name MATADOR PRODUCTION COMPANY	⁹ Elevation 3738'

¹⁰Surface Location

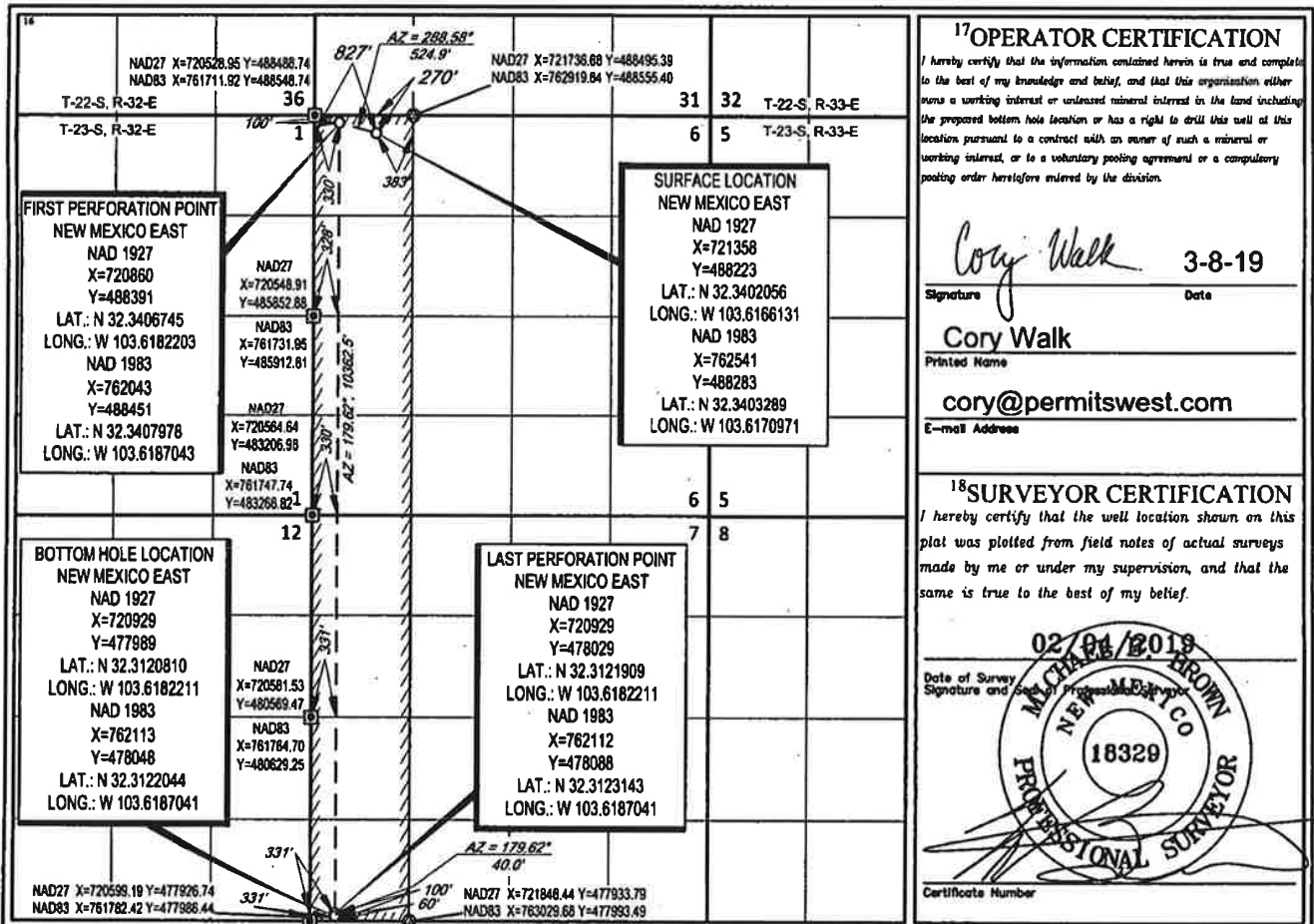
UL or lot no.	Section	Township	Range	Lot Idn	Feet from the	North/South line	Feet from the	East/West line	County
D(4)	6	23-S	33-E	4	270'	NORTH	827'	WEST	LEA

¹¹Bottom Hole Location If Different From Surface

UL or lot no.	Section	Township	Range	Lot Idn	Feet from the	North/South line	Feet from the	East/West line	County
M(4)	7	23-S	33-E	4	60'	SOUTH	331'	WEST	LEA

¹² Dedicated Acres 294.98	¹³ Joint or Infill 297.32	¹⁴ Consolidation Code	¹⁵ Order No.
--	--	----------------------------------	-------------------------

No allowable will be assigned to this completion until all interests have been consolidated or a non-standard unit has been approved by the division.



S:\SURVEY\MATADOR_RESOURCES\RODNEY_ROBINSON_B-23S-33E\FINAL_PRODUCTS\LO_RODNEY_ROBINSON_FEDERAL_121H_REV2.DWG 2/8/2019 4:42:37 PM Richardson

District I
1625 N. French Dr., Hobbs, NM 88240
Phone: (575) 393-6161 Fax: (575) 393-0720
District II
811 S. First St., Artesia, NM 88210
Phone: (575) 748-1283 Fax: (575) 748-9720
District III
1000 Rio Brazos Road, Aztec, NM 87410
Phone: (505) 334-6178 Fax: (505) 334-6170
District IV
1220 S. St. Francis Dr., Santa Fe, NM 87505
Phone: (505) 476-3460 Fax: (505) 476-3462

State of New Mexico
Energy, Minerals & Natural Resources
Department
OIL CONSERVATION DIVISION
1220 South St. Francis Dr.
Santa Fe, NM 87505

R/3
FORM C-102

Revised August 1, 2011
Submit one copy to appropriate
District Office

☐ AMENDED REPORT

WELL LOCATION AND ACREAGE DEDICATION PLAT

¹ API Number 30-025- 46775	² Pool Code 96228	³ Pool Name PRONGHORN; BONE SPRING ✓
⁴ Property Code 726002	⁵ Property Name RODNEY ROBINSON FEDERAL	
⁶ OGRID No. 228937	⁷ Operator Name MATADOR PRODUCTION COMPANY	⁸ Well Number 122H ⁹ Elevation 3732'

¹⁰Surface Location

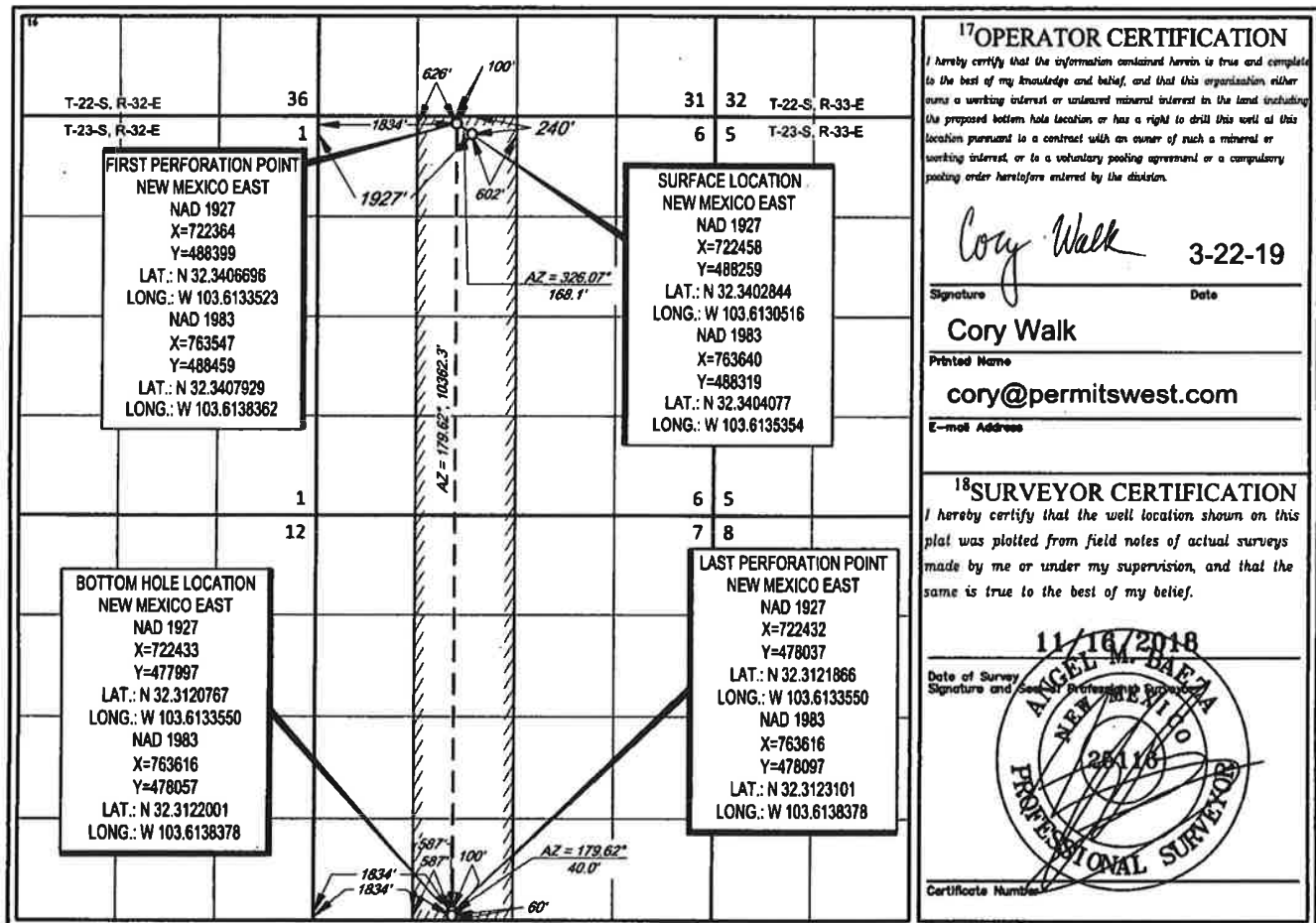
UL or lot no. C(3)	Section 6	Township 23-S	Range 33-E	Lot Idn 3	Feet from the 240'	North/South line NORTH	Feet from the 1927'	East/West line WEST	County LEA
------------------------------	---------------------	-------------------------	----------------------	---------------------	------------------------------	----------------------------------	-------------------------------	-------------------------------	----------------------

¹¹Bottom Hole Location If Different From Surface

UL or lot no. N	Section 7	Township 23-S	Range 33-E	Lot Idn -	Feet from the 60'	North/South line SOUTH	Feet from the 1834'	East/West line WEST	County LEA
---------------------------	---------------------	-------------------------	----------------------	---------------------	-----------------------------	----------------------------------	-------------------------------	-------------------------------	----------------------

¹² Dedicated Acres 320.01 320.03	¹³ Joint or Infill	¹⁴ Consolidation Code	¹⁵ Order No.
---	-------------------------------	----------------------------------	-------------------------

No allowable will be assigned to this completion until all interests have been consolidated or a non-standard unit has been approved by the division.



District I
1625 N. French Dr., Hobbs, NM 88240
Phone: (575) 393-6161 Fax: (575) 931-7210
District II
811 S. First St., Artesia, NM 88210
Phone: (575) 748-3460 Fax: (575) 748-9720
District III
1000 Ring Road, Aztec, NM 87401
Phone: (505) 334-6178 Fax: (505) 334-6170
District IV
1220 S. St. Francis Dr., Santa Fe, NM 87505
Phone: (505) 476-3460 Fax: (505) 476-3462

State of New Mexico
Energy, Minerals & Natural Resources
Department
OIL CONSERVATION DIVISION
1220 South St. Francis Dr.
Santa Fe, NM 87505

FORM C-102
Revised August 1, 2011
Submit one copy to appropriate
District Office

☐ AMENDED REPORT

WELL LOCATION AND ACREAGE DEDICATION PLAT

¹ API Number 30-025-46372	² Pool Code 98177	³ Pool Name WC-025 G-09 S223332A; UPR WOLFCAMP
⁴ Property Code 326002	⁵ Property Name RODNEY ROBINSON FEDERAL	⁶ Well Number 201H
⁷ GRID No. 228937	⁸ Operator Name MATADOR PRODUCTION COMPANY	⁹ Elevation 3738'

¹⁰Surface Location

UL or lot no.	Section	Township	Range	Lot Idn	Feet from the	North/South line	Feet from the	East/West line	County
(4)	6	23-S	33-E	4	240'	NORTH	797'	WEST	LEA

¹¹Bottom Hole Location If Different From Surface

UL or lot no.	Section	Township	Range	Lot Idn	Feet from the	North/South line	Feet from the	East/West line	County
(4)	7	23-S	33-E	4	60'	SOUTH	751'	WEST	LEA

¹² Dedicated Acres 291.08 299.32	¹³ Joint or Infill	¹⁴ Consolidation Code	¹⁵ Order No.
---	-------------------------------	----------------------------------	-------------------------

No allowable will be assigned to this completion until all interests have been consolidated or a non-standard unit has been approved by the division.

¹⁶ 		¹⁷ OPERATOR CERTIFICATION I hereby certify that the information contained herein is true and complete to the best of my knowledge and belief, and that this organization either owns a working interest or undivided mineral interest in the land including the proposed bottom hole location or has a right to drill this well at this location pursuant to a contract with an owner of such a mineral or working interest, or to a voluntary pooling agreement or a compulsory pooling order heretofore entered by the division. Cory Walk 3-8-19 Signature Date Cory Walk Printed Name cory@permitswest.com E-mail Address
¹⁸ SURVEYOR CERTIFICATION I hereby certify that the well location shown on this plat was plotted from field notes of actual surveys made by me or under my supervision, and that the same is true to the best of my belief. 02/04/2019 Date of Survey MICHAEL BROWN NEW MEXICO 18329 PROFESSIONAL SURVEYOR Certificate Number		

S:\SURVEY\MATADOR_RESOURCES\RODNEY_ROBINSON_6-235-33\FINAL_PRODUCTS\LO_RODNEY_ROBINSON_FEDERAL_201H_REV2.DWG 2/8/2019 4:06:49 PM richardson

District I
1625 N. French Dr., Hobbs, NM 88240
Phone: (575) 393-6161 Fax: (575) 393-0720
District II
811 S. First St., Hobbs, NM 88210
Phone: (575) 748-1200 Fax: (575) 748-9720
District III
1000 Rio Bravo Road, Aztec, NM 87401
Phone: (505) 597-6170 Fax: (505) 334-0140
District IV
1220 South Francis Dr., Santa Fe, NM 87505
Phone: (505) 836-3460 Fax: (505) 476-3462

State of New Mexico
Energy, Minerals & Natural Resources
Department
OIL CONSERVATION DIVISION
1220 South St. Francis Dr.
Santa Fe, NM 87505

FORM C-102
Revised August 1, 2011
Submit one copy to appropriate
District Office

☐ AMENDED REPORT

WELL LOCATION AND ACREAGE DEDICATION PLAT

¹ API Number 30-025-46373	² Pool Code 98177	³ Pool Name WC-025 G-09 S223332A; UPR WOLFCAMP
⁴ Property Code 326002	⁵ Property Name RODNEY ROBINSON FEDERAL	⁶ Well Number 202H
⁷ GRID No. 228937	⁸ Operator Name MATADOR PRODUCTION COMPANY	⁹ Elevation 3731'

¹⁰Surface Location

UL or lot no.	Section	Township	Range	Lot Idn	Feet from the	North/South line	Feet from the	East/West line	County
C(3)	6	23-S	33-E	3	240'	NORTH	1957'	WEST	LEA

¹¹Bottom Hole Location If Different From Surface

UL or lot no.	Section	Township	Range	Lot Idn	Feet from the	North/South line	Feet from the	East/West line	County
N	7	23-S	33-E	-	60'	SOUTH	1938'	WEST	LEA

¹² Dedicated Acres 320.01	¹³ Joint or Infill 320.02	¹⁴ Consolidation Code	¹⁵ Order No.
---	---	----------------------------------	-------------------------

No allowable will be assigned to this completion until all interests have been consolidated or a non-standard unit has been approved by the division.

<p>¹⁶</p>		<p>¹⁷OPERATOR CERTIFICATION</p> <p>I hereby certify that the information contained herein is true and complete to the best of my knowledge and belief, and that this organization either owns a working interest or undivided mineral interest in the land including the proposed bottom hole location or has a right to drill this well at this location pursuant to a contract with an owner of such a mineral or working interest, or to a voluntary pooling agreement or a compulsory pooling order heretofore entered by the division.</p> <p><i>Cory Walk</i> 3-26-19 Signature Date</p> <p>Cory Walk Printed Name</p> <p>cory@permitswest.com E-mail Address</p>
<p>¹⁸SURVEYOR CERTIFICATION</p> <p>I hereby certify that the well location shown on this plat was plotted from field notes of actual surveys made by me or under my supervision, and that the same is true to the best of my belief.</p> <p>11/16/2018 Date of Survey</p> <p>ANGEL M. BAEZA Signature and Seal of Professional Surveyor</p> <p>25118 Certificate Number</p>		

District I

1625 N. French Drive, Hobbs, NM 88240

District II

811 S. First St., Artesia, NM 88210

District III

1000 Rio Brazos Road, Aztec, NM 87410

District IV

1220 S. St Francis Dr, Santa Fe, NM 87505

State of New Mexico
Energy, Minerals and Natural Resources Department**OIL CONSERVATION DIVISION**1220 S. St Francis Drive
Santa Fe, New Mexico 87505Form C-107-B
Revised August 1, 2011Submit the original
application to the Santa Fe
office with one copy to the
appropriate District Office.**APPLICATION FOR SURFACE COMMINGLING (DIVERSE OWNERSHIP)**OPERATOR NAME: Matador Production CompanyOPERATOR ADDRESS: 5400 LBJ Freeway Tower 1 Suite 1500 Dallas, TX 75240

APPLICATION TYPE:

☐ Pool Commingling ☐ Lease Commingling ☒ Pool and Lease Commingling ☐ Off-Lease Storage and Measurement (Only if not Surface Commingled)LEASE TYPE: ☐ Fee ☐ State ☒ FederalIs this an Amendment to existing Order? ☐ Yes ☒ No If "Yes", please include the appropriate Order No. _____

Have the Bureau of Land Management (BLM) and State Land office (SLO) been notified in writing of the proposed commingling

☒ Yes ☐ No**(A) POOL COMMINGLING**

Please attach sheets with the following information

(1) Pool Names and Codes	Gravities / BTU of Non-Commingled Production	Calculated Gravities / BTU of Commingled Production	Calculated Value of Commingled Production	Volumes
Pronghorn; Bone Spring (96228)	44.0°	44.3° oil 1167 BTU/CF	\$50.80/bbl oil Decmed 40°/Sweet	8500 bopd
Pronghorn; Bone Spring (96228)	1136 BTU/CF		(Aug '19 realized price)	15000 mcf
WC-025 G-09 S223332A; Upr Wolfcamp (98177)	45.1°		\$0.99/mcf (Aug '19 realized price)	2500 bopd
WC-025 G-09 S223332A; Upr Wolfcamp (98177)	1285 BTU/CF			4000 mcf

(2) Are any wells producing at top allowables? ☐ Yes ☒ No(3) Has all interest owners been notified by certified mail of the proposed commingling? ☒ Yes ☐ No.(4) Measurement type: ☒ Metering ☐ Other (Specify)(5) Will commingling decrease the value of production? ☐ Yes ☒ No If "yes", describe why commingling should be approved**(B) LEASE COMMINGLING**

Please attach sheets with the following information

(1) Pool Name and Code- See Above

(2) Is all production from same source of supply? ☐ Yes ☒ No(3) Has all interest owners been notified by certified mail of the proposed commingling? ☒ Yes ☐ No(4) Measurement type: ☐ Metering ☐ Other (Specify)**(C) POOL and LEASE COMMINGLING**

Please attach sheets with the following information

(1) Complete Sections A and B.

(D) OFF-LEASE STORAGE and MEASUREMENT

Please attached sheets with the following information

(1) Is all production from same source of supply? ☐ Yes ☒ No

(2) Include proof of notice to all interest owners.

(E) ADDITIONAL INFORMATION (for all application types)

Please attach sheets with the following information

(1) A schematic diagram of facility, including legal location.

(2) A plat with lease boundaries showing all well and facility locations. Include lease numbers if Federal or State lands are involved.

(3) Lease Names, Lease and Well Numbers, and API Numbers.

I hereby certify that the information above is true and complete to the best of my knowledge and belief.

SIGNATURE: Ben PetersonTITLE: Senior Production EngineerDATE: 11/12/19TYPE OR PRINT NAME Ben PetersonTELEPHONE NO.: (972) 371-5427E-MAIL ADDRESS: bpeterson@matadorresources.com**EXHIBIT****3**

Matador Production Company

One Lincoln Centre • 5400 LBJ Freeway • Suite 1500 • Dallas, Texas 75240

Voice 972.371.5427 • Fax 972.371.5201

bpeterson@matadorresources.com

Benjamin D. Peterson
Senior Production Engineer

November 12, 2019

New Mexico Oil Conservation Division
1220 South St. Francis Drive
Santa Fe, NM 87505

Re: Application of Matador Production Company for administrative approval to surface commingle (lease and pool commingle) and off-lease measure, store, and sell production from the spacing units comprising the W/2 of Sections 6 and 7, Township 23 South, Range 33 East, NMPM, Lea County, New Mexico (the "Lands")

To Whom This May Concern,

Matador Production Company ("Matador"), OGRID: 228937, requests to commingle current oil and gas production from six distinct wells located on the Lands, and future production from the Lands as described herein. All wells will be metered through individual three-phase separators with an oil turbine meter and gas orifice meter. The gas commingling will occur after individual measurement at each well. Gas exiting each three-phase separator flows into one gathering line, as depicted on **Exhibit A**, the Lucid Energy Delaware, LLC ("Lucid") gathering line. Each well on the Lands will have its own three-phase separator with an orifice meter manufactured and assembled in accordance with American Gas Association ("AGA") specifications. All primary and secondary Electronic Flow Measurement ("EFM") equipment is tested and calibrated by a reputable third party measurement company in accordance with industry specifications.

The orifice meter is the preferred measurement device utilized by midstream and E&P companies in natural gas measurement. The gas samples are obtained at the time of the meter testing/calibration and the composition and heating value are determined by a laboratory in accordance with American Petroleum Institute ("API") specifications to ensure accurate volume and Energy ("MMBTU") determinations. See example from Fesco Laboratory attached as **Exhibit B** hereto.

The flow stream from each wellhead is demonstrated in the Process Flow Diagram ("PFD") attached as **Exhibit A** hereto. The PFD shows that the water, oil, and gas leave the wellbore and flow into a wellhead three-phase separator which separates the oil, gas, and water. The oil is measured via turbine meter which is calibrated periodically in accordance with industry specifications by a third party measurement company for accuracy. The gas is measured on a volume and MMBTU basis by an orifice meter and supporting EFM equipment in accordance with

API Chapter 21.1. The gas is then sent into a gathering line where it is commingled with each of the other wells' metered gas. The gathering line gas is then metered by another orifice meter at the tank battery check to show the total volume of gas leaving the tank battery. This meter is tested and calibrated in accordance with industry specifications and volume and energy are determined on an hourly, daily, and monthly basis. Once the gas exits this final tank battery sales check it travels directly into a third party sales connect meter. Lucid has its own orifice meter that measures the gas for custody transfer. These meters are also calibrated periodically to ensure the measurement accuracy.

In conclusion, all the oil and gas produced on the Lands is and will be metered at each wellhead and allocated correctly using the same measurement equipment as the pipeline sales measurement specifications accepted by API as industry standard.

Very truly yours,

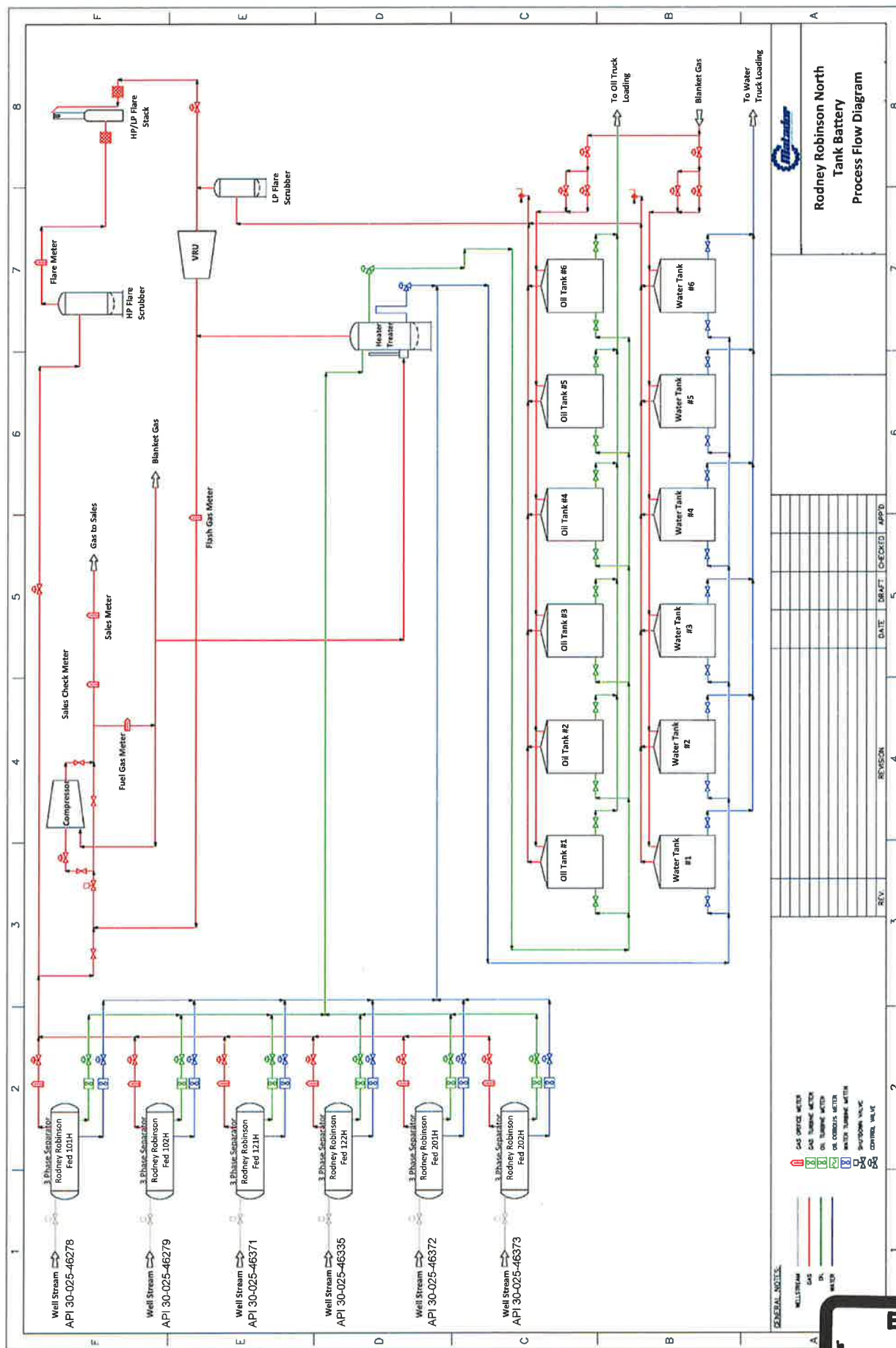
MATADOR PRODUCTION COMPANY

A handwritten signature in black ink, appearing to read 'B. Peterson', is written over the company name.

Benjamin D. Peterson
Sr. Production Engineer

BDP/bkf
Enclosures

Exhibit A



EXHIBIT

A

January 01, 2019

FESCO, Ltd.
1100 Fesco Ave. - Alice, Texas 78332

For: Matador Production Company
One Lincoln Centre
5400 LBJ Freeway, Suite 1500
Dallas, Texas 75240

Sample: Nina Cotell Federal COM No. 201H
First Stage Separator
Spot Gas Sample @ 564 psig & 121 °F

Date Sampled: 01/03/2019

Job Number: 91026.001

CHROMATOGRAPH EXTENDED ANALYSIS - GPA 2286

COMPONENT	MOL%	GPM
Hydrogen Sulfide*	< 0.001	
Nitrogen	1.784	
Carbon Dioxide	0.152	
Methane	75.730	
Ethane	13.338	3.652
Propane	5.526	1.559
Isobutane	0.560	0.188
n-Butane	1.433	0.463
2-2 Dimethylpropane	0.012	0.005
Isopentane	0.273	0.102
n-Pentane	0.317	0.118
Hexanes	0.297	0.125
Heptanes Plus	<u>0.578</u>	<u>0.250</u>
Totals	100.000	6.460

Computed Real Characteristics Of Heptanes Plus:

Specific Gravity ----- 3.496 (Air=1)
Molecular Weight ----- 100.86
Gross Heating Value ----- 5355 BTU/CF

Computed Real Characteristics Of Total Sample:

Specific Gravity ----- 0.748 (Air=1)
Compressibility (Z) ----- 0.9961
Molecular Weight ----- 21.59
Gross Heating Value
Dry Basis ----- 1307 BTU/CF
Saturated Basis ----- 1285 BTU/CF

*Hydrogen Sulfide tested on location by: Stain Tube Method (GPA 2377)

Results: <0.013 Gr/100 CF, <0.2 PPMV or <0.001 Mol %

Base Conditions: 15.025 PSI & 60 Deg F

Sampled By: (24) Dennis Field
Analyst: NG
Processor: RG
Cylinder ID: G-248

Certified: FESCO, Ltd. - Alice, Texas

David Dannhaus 361-661-7015

EXHIBIT**B**

FESCO, Ltd.

Job Number: 91026.001

CHROMATOGRAPH EXTENDED ANALYSIS - GPA 2286
TOTAL REPORT

COMPONENT	MOL %	GPM	WT %
Hydrogen Sulfide*	< 0.001		< 0.001
Nitrogen	1.784		2.314
Carbon Dioxide	0.152		0.310
Methane	75.730		56.259
Ethane	13.338	3.652	18.572
Propane	5.526	1.559	11.284
Isobutane	0.560	0.188	1.507
n-Butane	1.433	0.463	3.857
2,2 Dimethylpropane	0.012	0.005	0.040
Isopentane	0.273	0.102	0.912
n-Pentane	0.317	0.118	1.059
2,2 Dimethylbutane	0.003	0.001	0.012
Cyclopentane	0.000	0.000	0.000
2,3 Dimethylbutane	0.030	0.013	0.120
2 Methylpentane	0.090	0.038	0.359
3 Methylpentane	0.049	0.020	0.196
n-Hexane	0.125	0.053	0.499
Methylcyclopentane	0.061	0.022	0.238
Benzene	0.021	0.006	0.076
Cyclohexane	0.085	0.030	0.331
2-Methylhexane	0.018	0.009	0.084
3-Methylhexane	0.020	0.009	0.093
2,2,4 Trimethylpentane	0.000	0.000	0.000
Other C7's	0.056	0.025	0.257
n-Heptane	0.047	0.022	0.218
Methylcyclohexane	0.077	0.032	0.350
Toluene	0.020	0.007	0.085
Other C8's	0.064	0.030	0.327
n-Octane	0.022	0.012	0.116
Ethylbenzene	0.003	0.001	0.015
M & P Xylenes	0.009	0.004	0.044
O-Xylene	0.002	0.001	0.010
Other C9's	0.031	0.016	0.181
n-Nonane	0.009	0.005	0.053
Other C10's	0.014	0.008	0.092
n-Decane	0.005	0.003	0.033
Undecanes (11)	<u>0.014</u>	<u>0.009</u>	<u>0.097</u>
Totals	100.000	6.460	100.000

Computed Real Characteristics of Total Sample

Specific Gravity -----	0.748	(Air=1)
Compressibility (Z) -----	0.9961	
Molecular Weight -----	21.59	
Gross Heating Value		
Dry Basis -----	1307	BTU/CF
Saturated Basis -----	1285	BTU/CF

January 01, 2019

FESCO, Ltd.**1100 Fesco Ave. - Alice, Texas 78332****Sample:** Nina Cotell Federal COM No. 201H

First Stage Separator

Spot Gas Sample @ 564 psig & 121 °F

Date Sampled: 01/03/2019

Job Number: 91026.001

GLYCALC FORMAT

COMPONENT	MOL%	GPM	Wt %
Carbon Dioxide	0.152		0.310
Hydrogen Sulfide	< 0.001		< 0.001
Nitrogen	1.784		2.314
Methane	75.730		56.259
Ethane	13.338	3.652	18.572
Propane	5.526	1.559	11.284
Isobutane	0.560	0.188	1.507
n-Butane	1.445	0.467	3.897
Isopentane	0.273	0.102	0.912
n-Pentane	0.317	0.118	1.059
Cyclopentane	0.000	0.000	0.000
n-Hexane	0.125	0.053	0.499
Cyclohexane	0.085	0.030	0.331
Other C6's	0.172	0.073	0.687
Heptanes	0.202	0.087	0.890
Methylcyclohexane	0.077	0.032	0.350
2,2,4 Trimethylpentane	0.000	0.000	0.000
Benzene	0.021	0.006	0.076
Toluene	0.020	0.007	0.085
Ethylbenzene	0.003	0.001	0.015
Xylenes	0.011	0.004	0.054
Octanes Plus	<u>0.159</u>	<u>0.084</u>	<u>0.899</u>
Totals	100.000	6.460	100.000

Real Characteristics Of Octanes Plus:

Specific Gravity -----	4.231	(Air=1)
Molecular Weight -----	122.08	
Gross Heating Value -----	6530	BTU/CF

Real Characteristics Of Total Sample:

Specific Gravity -----	0.748	(Air=1)
Compressibility (Z) -----	0.9961	
Molecular Weight -----	21.59	
Gross Heating Value -----		
Dry Basis -----	1307	BTU/CF
Saturated Basis -----	1285	BTU/CF



Shipment Confirmation Acceptance Notice

A. Mailer Action

Note to Mailer: The labels and volume associated to this form online, **must** match the labeled packages being presented to the USPS® employee with this form.

MRC - Rodney Robinson Northern Tank Battery
CM# 83379.0001

Shipment Date: 11/14/2019

Shipped From:

Name: HOLLAND & HART LLP

Address: 110 N GUADALUPE ST # 1

City: SANTA FE

State: NM ZIP+4® 87501

Type of Mail	Volume
Priority Mail Express®	
Priority Mail®	0
First-Class Package Service®	
Returns	
International*	
Other	1
Total	1

*Start time for products with service guarantees will begin when mail arrives at the local Post Office™ and items receive individual processing and acceptance scans.

B. USPS Action

Note to RSS Clerk:

1. Home screen > Mailing/Shipping > More
2. Select Shipment Confirm
3. Scan or enter the barcode/label number from PS Form 5630
4. Confirm the volume count message by selecting Yes or No
5. Select Pay and End Visit to complete transaction

USPS EMPLOYEE: Please scan upon pickup or receipt of mail.
Leave form with customer or in customer's mail receptacle.

USPS SCAN AT ACCEPTANCE



9275 0901 1935 6200 0018 3930 18

EXHIBIT

4



Firm

Name and Address of Sender Holland & Hart LLP 110 N Guadalupe St # 1 Santa Fe NM 87501		Check type of mail or service <input type="checkbox"/> Adult Signature Required <input type="checkbox"/> Priority Mail Express <input type="checkbox"/> Adult Signature Restricted Delivery <input type="checkbox"/> Registered Mail <input checked="" type="checkbox"/> Certified Mail <input type="checkbox"/> Return Receipt for Merchandise <input type="checkbox"/> Certified Mail Restricted Delivery <input type="checkbox"/> Signature Confirmation <input type="checkbox"/> Collect on Delivery (COD) <input type="checkbox"/> Signature Confirmation Restricted Delivery <input type="checkbox"/> Insured Mail <input type="checkbox"/> Priority Mail		Affix Stamp Here (if issued as an international certificate of mailing or for additional copies of this receipt). Postmark with Date of Receipt.				
USPS Tracking/Article Number	Addressee (Name, Street, City, State, & ZIP Code™)	Postage	(Extra Service) Fee	Handling Charge	Actual Value if Registered	Insured Value	Due Sender COD	
1. 9214 8901 9403 8399 1065 14	Bureau of Land Management Carlsbad Field Office 620 E Greene St Carlsbad NM 88220	0.65	3.50	Handling Charge - if Registered and over \$50,000 in value				
Total Number of Pieces Listed by Sender 1	Total Number of Pieces Received at Post Office	Postmaster, Per (Name of receiving employee)						



Kaitlyn A. Luck
Phone (505) 954-7286
Fax (505) 819-5579
kaluck@hollandhart.com

November 14, 2019

CERTIFIED MAIL
RETURN RECEIPT REQUESTED

Bureau of Land Management
Carlsbad Field Office
620 E. Greene St.
Carlsbad, New Mexico 88220

Re: Application of Matador Production Company to authorize pool commingling, off-lease storage, off lease measurement, and off-lease marketing at the Rodney Robinson North Tank Battery located in the N/2 NW/4 of Section 6, Township 23 South, Range 33 East, NMPM, Lea County, New Mexico.

Ladies and Gentlemen:

Enclosed is a copy of the above-referenced application, which was filed with the New Mexico Oil Conservation Division on this date. Any objection to this application must be filed in writing within twenty days from this date at the Division's Santa Fe office located at 1220 South St. Francis Drive, Santa Fe, New Mexico, 87505. If no objection is received within this twenty-day period, this application may be approved administratively by the Division.

If you have any questions about this application, please contact the following:

Brian Fancher
Matador Production Company
972-371-5242
bfancher@matadorresources.com

Sincerely,
A handwritten signature in blue ink, appearing to read "Kaitlyn Luck".

Kaitlyn A. Luck
ATTORNEY FOR
MATADOR PRODUCTION COMPANY