

7TYQU-191205-C-107B 1378

Revised March 23, 2017

RECEIVED: 12/5/19	REVIEWER:	TYPE: PC	APP NO: pDM2000759958
-------------------	-----------	----------	-----------------------

ABOVE THIS TABLE FOR OCD DIVISION USE ONLY

**NEW MEXICO OIL CONSERVATION DIVISION**  
 - Geological & Engineering Bureau -  
 1220 South St. Francis Drive, Santa Fe, NM 87505

**ADMINISTRATIVE APPLICATION CHECKLIST**

THIS CHECKLIST IS MANDATORY FOR ALL ADMINISTRATIVE APPLICATIONS FOR EXCEPTIONS TO DIVISION RULES AND  
 REGULATIONS WHICH REQUIRE PROCESSING AT THE DIVISION LEVEL IN SANTA FE

**Applicant:** OXY USA INC **OGRID Number:** 16696 <sup>73</sup>  
**Well Name:** OXBOW CC 17 08 FEDERAL COM #031H & MULTIPLE **API:** 30-015-45083 & MULTIPLE  
**Pool:** PURPLE SAGE; WOLFCAMP & PIERCE CROSSING; BONE SPRING **Pool Code:** 98220 & 50371

**SUBMIT ACCURATE AND COMPLETE INFORMATION REQUIRED TO PROCESS THE TYPE OF APPLICATION  
 INDICATED BELOW**

**1) TYPE OF APPLICATION:** Check those which apply for (A)

A. Location - Spacing Unit - Simultaneous Dedication

☐ NSL☐ NSP (PROJECT AREA)☐ NSP (PRORATION UNIT)☐ SD

B. Check one only for (I) or (II)

(I) Commingling - Storage - Measurement

☐ DHC☐ CTB☐ PLC☒ PC☐ OLS☐ OLM

(II) Injection - Disposal - Pressure Increase - Enhanced Oil Recovery

☐ WFX☐ PMX☐ SWD☐ IPI☐ EOR☐ PPR**2) NOTIFICATION REQUIRED TO:** Check those which apply.A. ☒ Offset operators or lease holders *WIO were notified for ULM.*B. ☐ Royalty, overriding royalty owners, revenue ownersC. ☐ Application requires published noticeD. ☐ Notification and/or concurrent approval by SLOE. ☒ Notification and/or concurrent approval by BLMF. ☐ Surface ownerG. ☐ For all of the above, proof of notification or publication is attached, and/or,H. ☐ No notice required**FOR OCD ONLY**☐ Notice Complete
☐ Application  
 Content  
 Complete

**3) CERTIFICATION:** I hereby certify that the information submitted with this application for administrative approval is **accurate** and **complete** to the best of my knowledge. I also understand that **no action** will be taken on this application until the required information and notifications are submitted to the Division.

**Note: Statement must be completed by an individual with managerial and/or supervisory capacity.**

Kathleen Mowery  
 Print or Type Name

12-5-19  
 Date

713-366-5109  
 Phone Number

Kathleen Mowery  
 Signature

Kathleen\_Mowery@oxy.com  
 e-mail Address

Submit 1 Copy To Appropriate District Office  
 District I – (575) 393-6161  
 1625 N. French Dr., Hobbs, NM 88240  
 District II – (575) 748-1283  
 811 S. First St., Artesia, NM 88210  
 District III – (505) 334-6178  
 1000 Rio Brazos Rd., Aztec, NM 87410  
 District IV – (505) 476-3460  
 1220 S. St. Francis Dr., Santa Fe, NM 87505

State of New Mexico  
 Energy, Minerals and Natural Resources

Form C-103  
 Revised July 18, 2013

OIL CONSERVATION DIVISION  
 1220 South St. Francis Dr.  
 Santa Fe, NM 87505

WELL API NO. 30-015-45083
5. Indicate Type of Lease STATE <input type="checkbox"/> FEE <input type="checkbox"/>
6. State Oil & Gas Lease No.
7. Lease Name or Unit Agreement Name OXBOW CC 17 08 FEDERAL COM
8. Well Number #031H
9. OGRID Number 16696
10. Pool name or Wildcat PURPLE SAGE; WOLFCAMP
11. Elevation (Show whether DR, RKB, RT, GR, etc.)

SUNDRY NOTICES AND REPORTS ON WELLS  
 (DO NOT USE THIS FORM FOR PROPOSALS TO DRILL OR TO DEEPEN OR PLUG BACK TO A DIFFERENT RESERVOIR. USE "APPLICATION FOR PERMIT" (FORM C-101) FOR SUCH PROPOSALS.)

1. Type of Well: Oil Well ☒ Gas Well ☐ Other

2. Name of Operator  
OXY USA INC

3. Address of Operator  
5 GREENWAY PLAZA SUITE 110, HOUSTON, TX, 77046

4. Well Location

Unit Letter M: 432 feet from the SOUTH line and 1223 feet from the WEST line  
 Section 17 Township 24S Range 29E NMPM County EDDY

11. Elevation (Show whether DR, RKB, RT, GR, etc.)

12. Check Appropriate Box to Indicate Nature of Notice, Report or Other Data

NOTICE OF INTENTION TO:

PERFORM REMEDIAL WORK ☐ PLUG AND ABANDON ☐  
 TEMPORARILY ABANDON ☐ CHANGE PLANS ☐  
 PULL OR ALTER CASING ☐ MULTIPLE COMPL ☐  
 DOWNHOLE COMMINGLE ☐  
 CLOSED-LOOP SYSTEM ☐  
 OTHER: POOL COMMINGLE & OFF-LEASE MEASUREMENT ☒

SUBSEQUENT REPORT OF:

REMEDIAL WORK ☐ ALTERING CASING ☐  
 COMMENCE DRILLING OPNS. ☐ P AND A ☐  
 CASING/CEMENT JOB ☐  
 OTHER: ☐

13. Describe proposed or completed operations. (Clearly state all pertinent details, and give pertinent dates, including estimated date of starting any proposed work). SEE RULE 19.15.7.14 NMAC. For Multiple Completions: Attach wellbore diagram of proposed completion or recompletion.

OXY USA INC requests approval of a surface pool commingle and off-lease storage, measurement and sales for Train #3 at the Salt Flat CTB (C-20-24S-29E) for the wells listed below and future wells within the same pools and leases. Wells with identical CA boundaries will flow to the same facility train. Production from the trains will be kept separate and not commingled. Detailed information is attached.

Well Name	API	Pool
Oxbow CC 17 08 Federal Com #031H	30-015-45083	PURPLE SAGE; WOLFCAMP
Oxbow CC 17 08 Federal Com #032H	30-015-45084	PURPLE SAGE; WOLFCAMP
Oxbow CC 17 08 Federal Com #037H	30-015-46400	PURPLE SAGE; WOLFCAMP
Oxbow CC 17 08 Federal Com #033H	30-015-45085	PIERCE CROSSING; BONE SPRING

Spud Date:

Rig Release Date:

I hereby certify that the information above is true and complete to the best of my knowledge and belief.

SIGNATURE Kathleen Maweny TITLE Regulatory Engineer DATE 12-5-19

Type or print name Kathleen Maweny E-mail address: kathleen-maweny@oxy.com PHONE: 713-366-5169  
**For State Use Only**

APPROVED BY: \_\_\_\_\_ TITLE \_\_\_\_\_ DATE \_\_\_\_\_

Conditions of Approval (if any):

## APPLICATION FOR POOL COMMINGLE & OFF-LEASE STORAGE, MEASUREMENT AND SALES

### Commingling proposal for the Salt Flat CTB – Train #3

OXY USA INC respectfully requests approval of a pool commingle and off-lease storage, measurement and sales for Train #3 at the Salt Flat CTB (Lat 32.208183, Long -104.010796, C- 20-24S-29E). Oxbow CC 17 08 Federal Com #031H, Oxbow CC 17 08 Federal Com #032H, Oxbow CC 17 08 Federal Com #037H, and Oxbow CC 17 08 Federal Com #033H will produce to Train #3 and require a pool commingle and off-lease storage, measurement and sales. Production from the four Trains will be kept separate and only commingled downstream of the LACT used for the BLM's royalty payments.

#### POOL COMMINGLE & OFF-LEASE STORAGE, MEASUREMENT AND SALES - TRAIN #3

POOLS: PIERCE CROSSING; BONE SPRING (50371) & PURPLE SAGE; WOLFCAMP (98220)

#### COM AGREEMENTS PENDING

37.5% BLM ROYALTY 12.5% (NMNM 117120) & 12.5% BLM ROYALTY 12.5% (NMNM 102913) & 12.5% BLM ROYALTY 12.5% (NMLC 065970C) &

12.5% BLM ROYALTY 12.5% (NMNM 94651) & 25% FEE FOR BLM INTEREST ALLOCATION OF 9.375%

Well Name	API	Surface Location	Pool	POOL CODE	EST DATE ONLINE	Est. Oil (bpd)	Est. Gravity API	Est. Gas (MSCFD)	Est. BTU/cf	Est. Water (bpd)
Oxbow CC 17 08 Federal Com #031H	30-015-45083	M-17-24S-29E	PURPLE SAGE; WOLFCAMP	98220	Mar-20	1098	44	2605	1300	2935
Oxbow CC 17 08 Federal Com #032H	30-015-45084	M-17-24S-29E	PURPLE SAGE; WOLFCAMP	98220	Mar-20	1098	44	2605	1300	2935
Oxbow CC 17 08 Federal Com #037H	30-015-46400	N-17-24S-29E	PURPLE SAGE; WOLFCAMP	98220	Mar-20	1098	44	2605	1300	2935
Oxbow CC 17 08 Federal Com #033H	30-015-45085	M-17-24S-29E	PIERCE CROSSING; BONE SPRING	50371	Mar-20	1098	44	2605	1300	2935

#### Process Description:

For each Facility Train, production is sent through a 10' X 40' three-phase production separator. Oil production flows through a line heater then to an 8' X 20' heater treater before being sent to a 4' vapor recovery tower. Oil then flows to two oil storage tanks before being pumped through one of two LACT meters S/N\*, which will serve as the FMPs for BLM royalty payments. Oil from all four trains then combines and routes to two oil storage tanks before being pumped through one of three LACT meters S/N\*, which will serve as Oxy's sales point. A truck load FMP will be set up at the Facility for use as back-up in the event of a LACT meter failure.

Oil and gas production will be allocated back to each well based on well test. For testing purposes, each Train will be equipped with one permanent 8' x 20' three-phase test separator. Each test vessel will be equipped with oil turbine meters (S/N\*), gas orifice meters (S/N\*) and water turbine meters.

All wells will be tested daily prior to Range 1 of decline, and will be tested at least three times per month during Range 1 of decline. When Range 2 decline is started, the wells will be tested at least twice per month. Wells will be tested at least once per month when Range 3 of decline is started, as specified in Hearing Order R-14299.

\*Meter number to be submitted upon installation. The oil and gas meters will be calibrated on a regular basis per API, NMOCD and BLM specifications.

Gas production from all wells at each Train will be combined after the production and test separators. It will then flow through an orifice meter S/N\*, which will serve as the gas FMP for that Train for the purpose of BLM royalty payment, then sent to one of two 5' x 10' gas scrubbers, and then sent to sales.

All water from the Salt Flat CTB will be sent to the Cedar Canyon Water Disposal System.

\*Meter number to be submitted upon installation. The oil and gas meters will be calibrated on a regular basis per API, NMOCD and BLM specifications.

#### Additional Application Components:

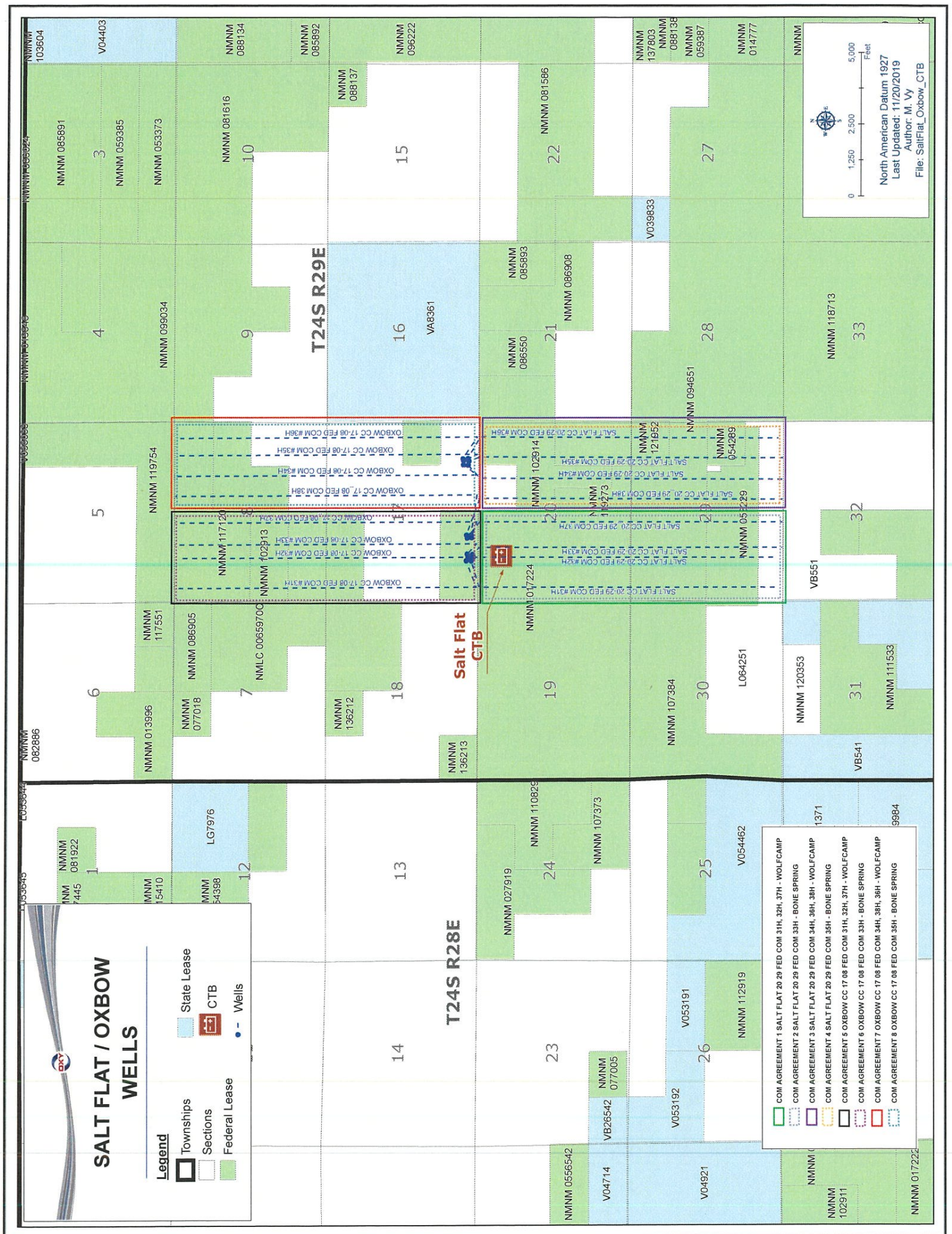
The flow of production is shown in detail on the enclosed facility diagram. Also enclosed is a map detailing the lease boundaries, well and battery locations.

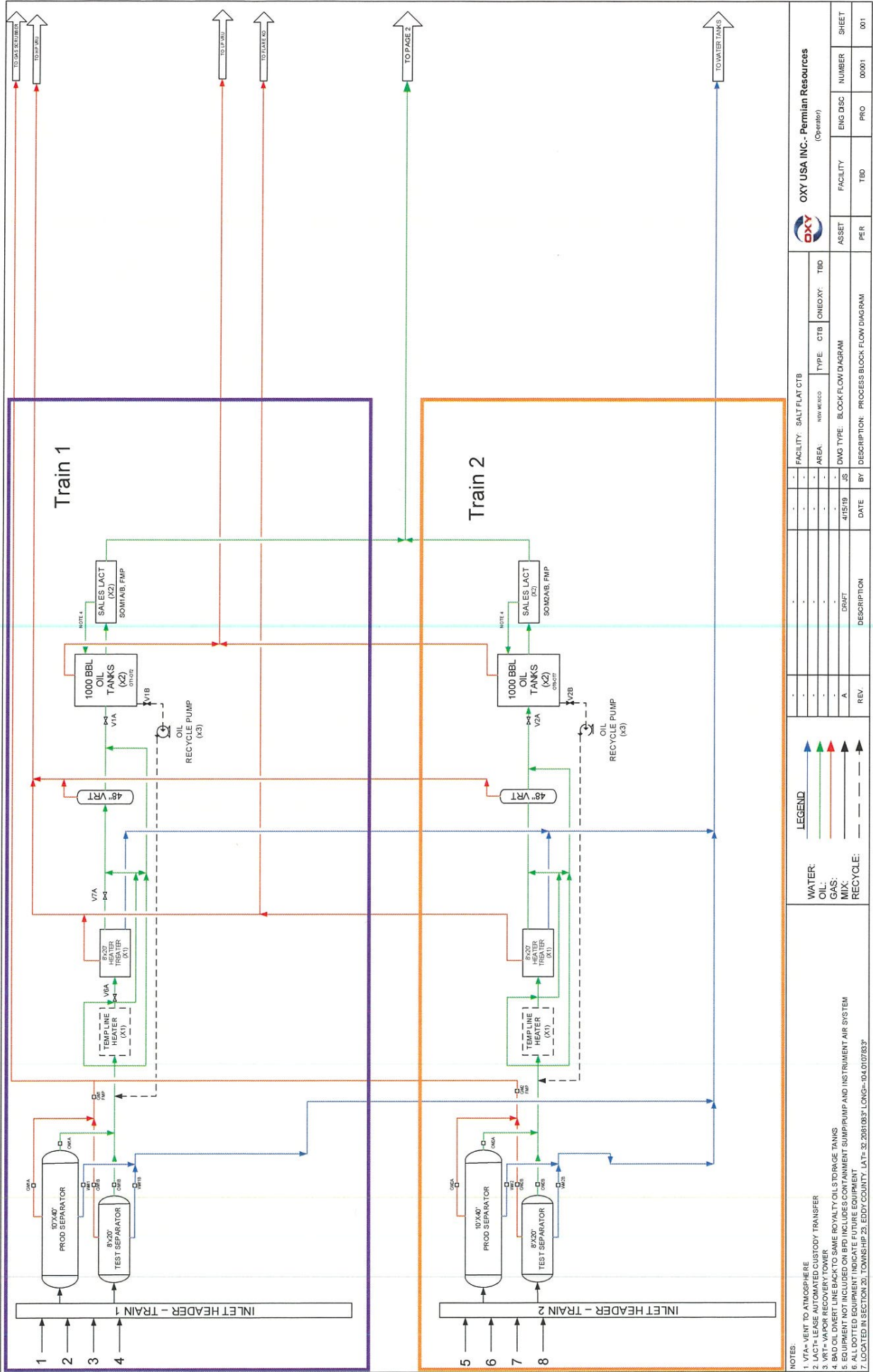
All wells in each train have identical ownership therefore notification was not required.







Pursuant to Statewide rule 19.15.12.10(C)(4)(g) OXY USA INC requests the option to include additional pools or leases within the defined parameters set forth in the Order for future additions.

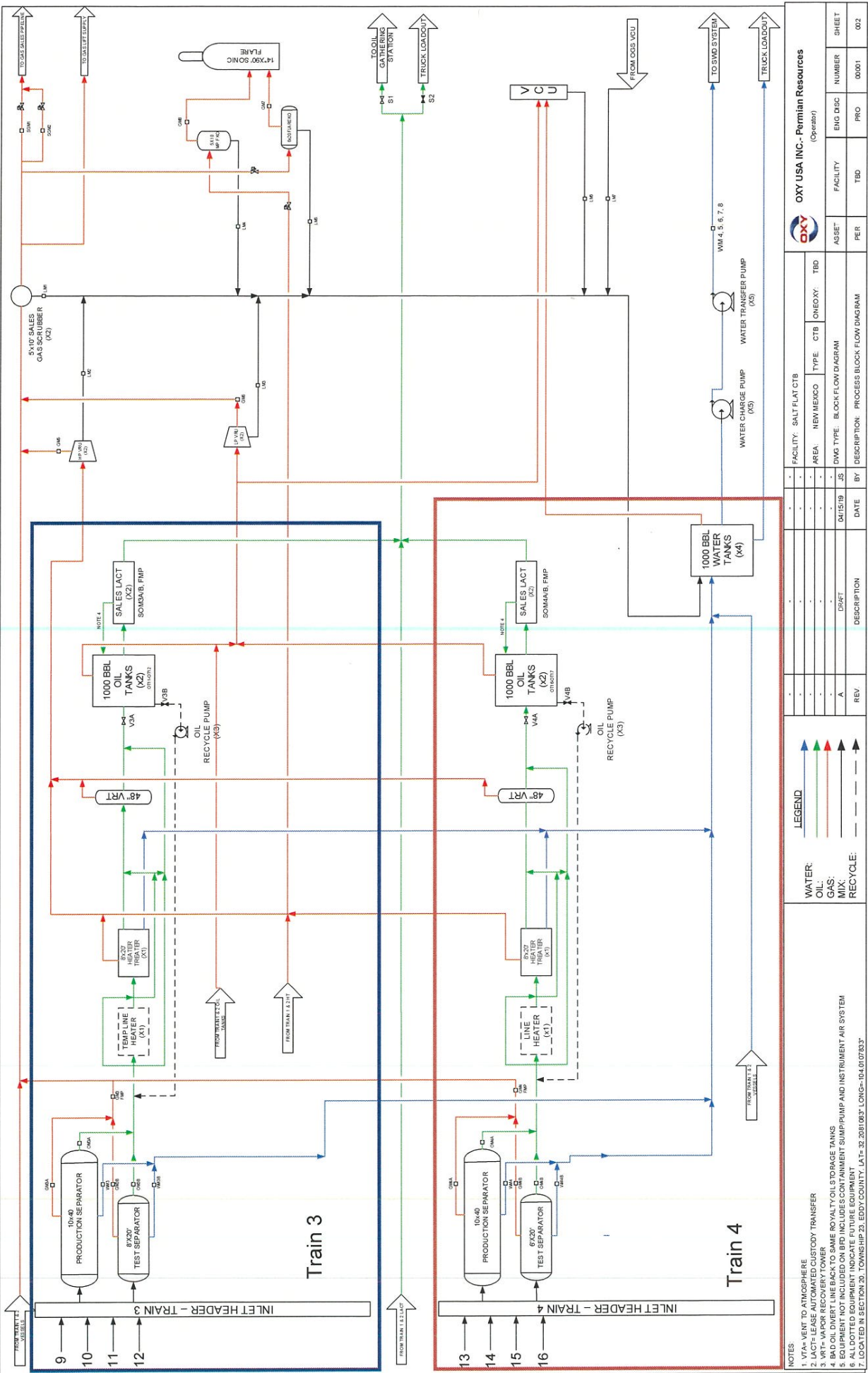
Commingling this production is the most effective means of producing the reserves. The surface commingle application will be submitted separately for approval per NMOCD and BLM regulations.

OXY USA INC understands the requested approval will not constitute the granting of any right-of-way or construction rights not granted by the lease instrument.





<div>NOTES:</div> <div>1. VTA= VENT TO ATMOSPHERE</div> <div>2. LACT= LEASE AUTOMATED CUSTODY TRANSFER</div> <div>3. VRT= VAPOR RECOVERY TOWER</div> <div>4. BAD OIL DIVERT LINE BACK TO SAME ROYALTY OILS TO STORAGE TANKS</div> <div>5. EQUIPMENT NOT INCLUDED ON BFD INCLUDES CONTAINMENT SUMP/PUMP AND INSTRUMENT AIR SYSTEM</div> <div>6. ALL DOTTED EQUIPMENT INDICATE FUTURE EQUIPMENT</div> <div>7. LOCATION OF FUTURE EQUIPMENT LOCATED IN SECTION 20, TOWNSHIP 23, EDDY COUNTY, LAT: 32.2091083° LONG: -104.0170783°</div>													<div>LEGEND</div> <div>WATER: </div> <div>OIL: </div> <div>GAS: </div> <div>MIX: </div> <div>RECYCLE: </div>													<div> OXY USA INC. - Permian Resources <small>(Operator)</small></div>																																																																																																																																																																																																																																																																																																																																																																																																																																																																																																																																																																																																																																																																																																																																																																																																																																																																																																																																																																																																																																																																																																																															
-	-	-	-	-	-	-	-	-	-	-	-	-	-	-	-	-	-	-	-	-	-	-	-	-	-	-	-	-	-	-	-	-	-	-	-	-	-	-	-	-	-	-	-	-	-	-	-	-	-	-	-	-	-	-	-	-	-	-	-	-	-	-	-	-	-	-	-	-	-	-	-	-	-	-	-	-	-	-	-	-	-	-	-	-	-	-	-	-	-	-	-	-	-	-	-	-	-	-	-	-	-	-	-	-	-	-	-	-	-	-	-	-	-	-	-	-	-	-	-	-	-	-	-	-	-	-	-	-	-	-	-	-	-	-	-	-	-	-	-	-	-	-	-	-	-	-	-	-	-	-	-	-	-	-	-	-	-	-	-	-	-	-	-	-	-	-	-	-	-	-	-	-	-	-	-	-	-	-	-	-	-	-	-	-	-	-	-	-	-	-	-	-	-	-	-	-	-	-	-	-	-	-	-	-	-	-	-	-	-	-	-	-	-	-	-	-	-	-	-	-	-	-	-	-	-	-	-	-	-	-	-	-	-	-	-	-	-	-	-	-	-	-	-	-	-	-	-	-	-	-	-	-	-	-	-	-	-	-	-	-	-	-	-	-	-	-	-	-	-	-	-	-	-	-	-	-	-	-	-	-	-	-	-	-	-	-	-	-	-	-	-	-	-	-	-	-	-	-	-	-	-	-	-	-	-	-	-	-	-	-	-	-	-	-	-	-	-	-	-	-	-	-	-	-	-	-	-	-	-	-	-	-	-	-	-	-	-	-	-	-	-	-	-	-	-	-	-	-	-	-	-	-	-	-	-	-	-	-	-	-	-	-	-	-	-	-	-	-	-	-	-	-	-	-	-	-	-	-	-	-	-	-	-	-	-	-	-	-	-	-	-	-	-	-	-	-	-	-	-	-	-	-	-	-	-	-	-	-	-	-	-	-	-	-	-	-	-	-	-	-	-	-	-	-	-	-	-	-	-	-	-	-	-	-	-	-	-	-	-	-	-	-	-	-	-	-	-	-	-	-	-	-	-	-	-	-	-	-	-	-	-	-	-	-	-	-	-	-	-	-	-	-	-	-	-	-	-	-	-	-	-	-	-	-	-	-	-	-	-	-	-	-	-	-	-	-	-	-	-	-	-	-	-	-	-	-	-	-	-	-	-	-	-	-	-	-	-	-	-	-	-	-	-	-	-	-	-	-	-	-	-	-	-	-	-	-	-	-	-	-	-	-	-	-	-	-	-	-	-	-	-	-	-	-	-	-	-	-	-	-	-	-	-	-	-	-	-	-	-	-	-	-	-	-	-	-	-	-	-	-	-	-	-	-	-	-	-	-	-	-	-	-	-	-	-	-	-	-	-	-	-	-	-	-	-	-	-	-	-	-	-	-	-	-	-	-	-	-	-	-	-	-	-	-	-	-	-	-	-	-	-	-	-	-	-	-	-	-	-	-	-	-	-	-	-	-	-	-	-	-	-	-	-	-	-	-	-	-	-	-	-	-	-	-	-	-	-	-	-	-	-	-	-	-	-	-	-	-	-	-	-	-	-	-	-	-	-	-	-	-	-	-	-	-	-	-	-	-	-	-	-	-	-	-	-	-	-	-	-	-	-	-	-	-	-	-	-	-	-	-	-	-	-	-	-	-	-	-	-	-	-	-	-	-	-	-	-	-	-	-	-	-	-	-	-	-	-	-	-	-	-	-	-	-	-	-	-	-	-	-	-	-	-	-	-	-	-	-	-	-	-	-	-	-	-	-	-	-	-	-	-	-	-	-	-	-	-	-	-	-	-	-	-	-	-	-	-	-	-	-	-	-	-	-	-	-	-	-	-	-	-	-	-	-	-	-	-	-	-	-	-	-	-	-	-	-	-	-	-	-	-	-	-	-	-	-	-	-	-	-	-	-	-	-	-	-	-	-	-	-	-	-	-	-	-	-	-	-	-	-	-	-	-	-	-	-	-	-	-	-	-	-	-	-	-	-	-	-	-	-	-	-	-	-	-	-	-	-	-	-	-	-	-	-	-	-	-	-	-	-	-	-	-	-	-	-	-	-	-	-	-	-	-	-	-	-	-	-	-	-	-	-	-	-	-	-	-	-	-	-	-	-	-	-	-	-	-	-	-	-	-	-	-	-	-	-	-	-	-	-	-	-	-	-	-	-	-	-	-	-	-	-	-	-	-	-	-	-	-	-	-	-	-	-	-	-	-	-	-	-	-	-	-	-	-	-	-	-	-	-	-	-	-	-	-	-	-	-	-	-	-	-	-	-	-	-	-	-	-	-	-	-	-	-	-	-	-	-	-	-	-	-	-	-	-	-	-	-	-	-	-	-	-	-	-	-	-	-	-	-	-	-	-	-	-	-	-	-	-	-	-	-	-	-	-	-	-	-	-	-	-	-	-	-	-	-	-	-	-	-	-	-	-	-	-	-	-	-	-	-	-	-	-	-	-	-	-	-	-	-	-	-	-	-	-	-	-	-	-	-	-	-	-	-	-	-	-	-	-	-	-	-	-



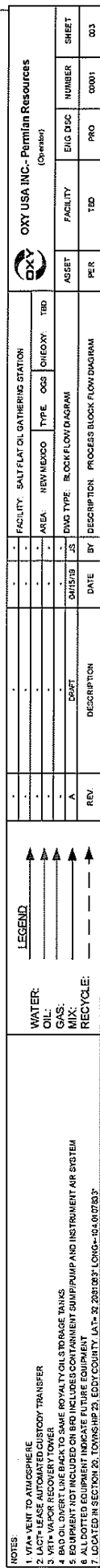


Table 1: Well Details			
No.	Train	Well Name	API
1	1	Salt Flat 2029 Federal Com #037H	30-015-45080
2	1	Salt Flat 2029 Federal Com #032H	30-015-45081
3	1	Salt Flat 2029 Federal Com #033H	30-015-45082
4	1	Salt Flat 2029 Federal Com #037H	30-015-46369
5	2	Salt Flat CC 2029 Federal Com #034H	30-015-45048
6	2	Salt Flat CC 2029 Federal Com #035H	30-015-45049
7	2	Salt Flat CC 2029 Federal Com #036H	30-015-45050
8	2	Salt Flat CC 2029 Federal Com #038H	30-015-46399
9	3	Dibow CC 17 08 Federal Com #037H	30-015-45083
10	3	Dibow CC 17 08 Federal Com #032H	30-015-45084
11	3	Dibow CC 17 08 Federal Com #037H	30-015-46400
12	3	Dibow CC 17 08 Federal Com #033H	30-015-45085
13	4	Dibow CC 17 08 Federal Com #034H	30-015-45086
14	4	Dibow CC 17 08 Federal Com #038H	30-015-46401
15	4	Dibow CC 17 08 Federal Com #036H	30-015-45088
16	4	Dibow CC 17 08 Federal Com #035H	30-015-45087

Table 2: Valve Details			
Production Phase	Valve ID	Position	Sales Phase
V1A	OPEN	V1A	OPEN
V1B	OPEN	V1B	OPEN
V2A	OPEN	V2A	OPEN
V2B	OPEN	V2B	OPEN
V3A	OPEN	V3A	OPEN
V3B	OPEN	V3B	OPEN
V4A	OPEN	V4A	OPEN
V4B	OPEN	V4B	OPEN
S1	OPEN	S1	OPEN
S2	CLOSED	S2	CLOSED
S3	OPEN	S3	OPEN
S4	CLOSED	S4	CLOSED

Table 3: Meter Details			
Meter ID	Meter S/N	FMP	Type
GM1A	TBD	N	GAS
GM1B	TBD	N	GAS
GM1C	TBD	N	GAS
GM2A	TBD	N	GAS
GM2B	TBD	N	GAS
GM2C	TBD	N	GAS
GM3A	TBD	N	GAS
GM3B	TBD	N	GAS
GM3C	TBD	N	GAS
GM4A	TBD	N	GAS
GM4B	TBD	N	GAS
GM4C	TBD	N	GAS
GM1	TBD	Y	GAS
GM2	TBD	Y	GAS
GM3	TBD	N	GAS
GM4	TBD	N	GAS
GM5	TBD	N	GAS
GM6	TBD	N	GAS
GM7	TBD	N	GAS
GM8	TBD	N	GAS
SGM1	TBD	Y	GAS
SGM1	TBD	Y	GAS
OM1A	TBD	N	OIL
OM1B	TBD	N	OIL
OM1C	TBD	N	OIL
OM2A	TBD	N	OIL
OM2B	TBD	N	OIL
OM2C	TBD	N	OIL
OM3A	TBD	N	OIL
OM3B	TBD	N	OIL
OM3C	TBD	N	OIL

Table 3: Meter Details (Cont.)			
Meter ID	Meter S/N	FMP	Type
OM4A	TBD	N	OIL
OM4B	TBD	N	OIL
OM4C	TBD	N	OIL
SOM1	TBD	Y	OIL
SOM2	TBD	Y	OIL
SOM3	TBD	Y	OIL
SOM4	TBD	Y	OIL
WM1A	TBD	N	WATER
WM1B	TBD	N	WATER
WM1C	TBD	N	WATER
WM2A	TBD	N	WATER
WM2B	TBD	N	WATER
WM2C	TBD	N	WATER
WM3A	TBD	N	WATER
WM3B	TBD	N	WATER
WM3C	TBD	N	WATER
WM4A	TBD	N	WATER
WM4B	TBD	N	WATER
WM4C	TBD	N	WATER
WM1	TBD	N	WATER
WM2	TBD	N	WATER
WM3	TBD	N	WATER
WM4	TBD	N	WATER
OM5	TBD	N	OIL
LM1	TBD	N	WATER
LM2	TBD	N	WATER
LM3	TBD	N	WATER
LM4	TBD	N	WATER
LM5	TBD	N	WATER
LM6	TBD	N	WATER
LM7	TBD	N	WATER

Table 4: Oil Tank Details			
Tank ID	Train	S/N	
OT1	1	TBD	
OT2	1	TBD	
OT6	2	TBD	
OT7	2	TBD	
OT11	3	TBD	
OT12	3	TBD	
OT16	4	TBD	
OT17	4	TBD	
OT19	SALES	TBD	
OT20	SALES	TBD	

NOTES

1 0M-GAS METER  
2 0M-QOL METER  
3 0M-WATER METER  
4 0M-WATER METER  
5 0M-SALES OIL METER  
6 0M-OIL METER  
7 0M-OIL METER  
8 0M-BUOL TANK

LEGEND

WATER  
OIL  
GAS  
MIX  
RECYCLE

↑  
↑  
↑  
↑  
↑  
↑  
↑  
↑  
↑  
↑  
↑  
↑  
↑  
↑  
↑  
↑  
↑  
↑  
↑  
↑  
↑  
↑  
↑  
↑  
↑  
↑  
↑  
↑  
↑  
↑  
↑  
↑  
↑  
↑  
↑  
↑  
↑  
↑  
↑  
↑  
↑  
↑  
↑  
↑  
↑  
↑  
↑  
↑  
↑  
↑  
↑  
↑  
↑  
↑  
↑  
↑  
↑  
↑  
↑  
↑  
↑  
↑  
↑  
↑  
↑  
↑  
↑  
↑  
↑  
↑  
↑  
↑  
↑  
↑  
↑  
↑  
↑  
↑  
↑  
↑  
↑  
↑  
↑  
↑  
↑  
↑  
↑  
↑  
↑  
↑  
↑  
↑  
↑  
↑  
↑  
↑  
↑  
↑  
↑  
↑  
↑  
↑  
↑  
↑  
↑  
↑  
↑  
↑  
↑  
↑  
↑  
↑  
↑  
↑  
↑  
↑  
↑  
↑  
↑  
↑  
↑  
↑  
↑  
↑  
↑  
↑  
↑  
↑  
↑  
↑  
↑  
↑  
↑  
↑  
↑  
↑  
↑  
↑  
↑  
↑  
↑  
↑  
↑  
↑  
↑  
↑  
↑  
↑  
↑  
↑  
↑  
↑  
↑  
↑  
↑  
↑  
↑  
↑  
↑  
↑  
↑  
↑  
↑  
↑  
↑  
↑  
↑  
↑  
↑  
↑  
↑  
↑  
↑  
↑  
↑  
↑  
↑  
↑  
↑  
↑  
↑  
↑  
↑  
↑  
↑  
↑  
↑  
↑  
↑  
↑  
↑  
↑  
↑  
↑  
↑  
↑  
↑  
↑  
↑  
↑  
↑  
↑  
↑  
↑  
↑  
↑  
↑  
↑  
↑  
↑  
↑  
↑  
↑  
↑  
↑  
↑  
↑  
↑  
↑  
↑  
↑  
↑  
↑  
↑  
↑  
↑  
↑  
↑  
↑  
↑  
↑  
↑  
↑  
↑  
↑  
↑  
↑  
↑  
↑  
↑  
↑  
↑  
↑  
↑  
↑  
↑  
↑  
↑  
↑  
↑  
↑  
↑  
↑  
↑  
↑  
↑  
↑  
↑  
↑  
↑  
↑  
↑  
↑  
↑  
↑  
↑  
↑  
↑  
↑  
↑  
↑  
↑  
↑  
↑  
↑  
↑  
↑  
↑  
↑  
↑  
↑  
↑  
↑  
↑  
↑  
↑  
↑  
↑  
↑  
↑  
↑  
↑  
↑  
↑  
↑  
↑  
↑  
↑  
↑  
↑  
↑  
↑  
↑  
↑  
↑  
↑  
↑  
↑  
↑  
↑  
↑  
↑  
↑  
↑  
↑  
↑  
↑  
↑  
↑  
↑  
↑  
↑  
↑  
↑  
↑  
↑  
↑  
↑  
↑  
↑  
↑  
↑  
↑  
↑  
↑  
↑  
↑  
↑  
↑  
↑  
↑  
↑  
↑  
↑  
↑  
↑  
↑  
↑  
↑  
↑  
↑  
↑  
↑  
↑  
↑  
↑  
↑  
↑  
↑  
↑  
↑  
↑  
↑  
↑  
↑  
↑  
↑  
↑  
↑  
↑  
↑  
↑  
↑  
↑  
↑  
↑  
↑  
↑  
↑  
↑  
↑  
↑  
↑  
↑  
↑  
↑  
↑  
↑  
↑  
↑  
↑  
↑  
↑  
↑  
↑  
↑  
↑  
↑  
↑  
↑  
↑  
↑  
↑  
↑  
↑  
↑  
↑  
↑  
↑  
↑  
↑  
↑  
↑  
↑  
↑  
↑  
↑  
↑  
↑  
↑  
↑  
↑  
↑  
↑  
↑  
↑  
↑  
↑  
↑  
↑  
↑  
↑  
↑  
↑  
↑  
↑  
↑  
↑  
↑  
↑  
↑  
↑  
↑  
↑  
↑  
↑  
↑  
↑  
↑  
↑  
↑  
↑  
↑  
↑  
↑  
↑  
↑  
↑  
↑  
↑  
↑  
↑  
↑  
↑  
↑  
↑  
↑  
↑  
↑  
↑  
↑  
↑  
↑  
↑  
↑  
↑  
↑  
↑  
↑  
↑  
↑  
↑  
↑  
↑  
↑  
↑  
↑  
↑  
↑  
↑  
↑  
↑  
↑  
↑  
↑  
↑  
↑  
↑  
↑  
↑  
↑  
↑  
↑  
↑  
↑  
↑  
↑  
↑  
↑  
↑  
↑  
↑  
↑  
↑  
↑  
↑  
↑  
↑  
↑  
↑  
↑  
↑  
↑  
↑  
↑  
↑  
↑  
↑  
↑  
↑  
↑  
↑  
↑  
↑  
↑  
↑  
↑  
↑  
↑  
↑  
↑  
↑  
↑  
↑  
↑  
↑  
↑  
↑  
↑  
↑  
↑  
↑  
↑  
↑  
↑  
↑  
↑  
↑  
↑  
↑  
↑  
↑  
↑  
↑  
↑  
↑  
↑  
↑  
↑  
↑  
↑  
↑  
↑  
↑  
↑  
↑  
↑  
↑  
↑  
↑  
↑  
↑  
↑  
↑  
↑  
↑  
↑  
↑  
↑  
↑  
↑  
↑  
↑  
↑  
↑  
↑  
↑  
↑  
↑  
↑  
↑  
↑  
↑  
↑  
↑  
↑  
↑  
↑  
↑  
↑  
↑  
↑  
↑  
↑  
↑  
↑  
↑  
↑  
↑  
↑  
↑  
↑  
↑  
↑  
↑  
↑  
↑  
↑  
↑  
↑  
↑  
↑  
↑  
↑  
↑  
↑  
↑  
↑  
↑  
↑  
↑  
↑  
↑  
↑  
↑  
↑  
↑  
↑  
↑  
↑  
↑  
↑  
↑  
↑  
↑  
↑  
↑  
↑  
↑  
↑  
↑  
↑  
↑  
↑  
↑  
↑  
↑  
↑  
↑  
↑  
↑  
↑  
↑  
↑  
↑  
↑  
↑  
↑  
↑  
↑  
↑  
↑  
↑  
↑  
↑  
↑  
↑  
↑  
↑  
↑  
↑  
↑  
↑  
↑  
↑  
↑  
↑  
↑  
↑  
↑  
↑  
↑  
↑  
↑  
↑  
↑  
↑  
↑  
↑  
↑  
↑  
↑  
↑  
↑  
↑  
↑  
↑  
↑  
↑  
↑  
↑  
↑  
↑  
↑  
↑  
↑  
↑  
↑  
↑  
↑  
↑  
↑  
↑  
↑  
↑  
↑  
↑  
↑  
↑  
↑  
↑  
↑  
↑  
↑  
↑  
↑  
↑  
↑  
↑  
↑  
↑  
↑  
↑  
↑  
↑  
↑  
↑  
↑  
↑  
↑  
↑  
↑  
↑  
↑  
↑  
↑  
↑  
↑  
↑  
↑  
↑  
↑  
↑  
↑  
↑  
↑  
↑  
↑  
↑  
↑  
↑  
↑  
↑  
↑  
↑  
↑  
↑  
↑  
↑  
↑  
↑  
↑  
↑  
↑  
↑  
↑  
↑  
↑  
↑  
↑  
↑  
↑  
↑  
↑  
↑  
↑  
↑  
↑  
↑  
↑  
↑  
↑  
↑  
↑  
↑  
↑  
↑  
↑  
↑  
↑  
↑  
↑  
↑  
↑  
↑  
↑  
↑  
↑  
↑  
↑  
↑  
↑  
↑  
↑  
↑  
↑  
↑  
↑  
↑  
↑  
↑  
↑  
↑  
↑  
↑  
↑  
↑  
↑  
↑  
↑  
↑  
↑



**OXY USA INC**  
A subsidiary of Occidental Petroleum Corporation

5 Greenway Plaza, Suite 110, Houston, Texas 77046  
P.O. Box 4294, Houston, Texas 77210-4294  
Direct: 713.366.5109  
Kathleen\_Mowery@oxy.com

December 5, 2019

**CERTIFIED MAIL**  
**RETURN RECEIPT REQUESTED**

To Whom It May Concern:

This is to advise you that OXY USA INC is filing an Off Lease Measurement application with the New Mexico Oil Conservation Division and Bureau of Land Management for the following wells:

- Oxbow CC 17 08 Federal Com #031H
- Oxbow CC 17 08 Federal Com #032H
- Oxbow CC 17 08 Federal Com #037H
- Oxbow CC 17 08 Federal Com #033H

A copy of the application is enclosed for your review.

Pursuant to NMAC 19.15.23.9, interested parties must file objections or requests for hearing in writing with the New Mexico Oil Conservation Division office within 20 days after notice, or the Commission may approve the application.

For questions pertaining to the application, please contact Kathleen Mowery at (713) 366-5109.

Respectfully,

A handwritten signature in black ink that reads "Kathleen Mowery".

**OXY USA INC**  
Kathleen Mowery  
Permian Regulatory  
(713) 366-5109  
Kathleen\_Mowery@oxy.com

## Off-lease storage, measurement, and sales notification list - Salt Flat Train #3

ToName	DeliveryAddress	City	State	Zip	MailDate	TrackingNo
MW Petroleum Corporation	303 Veterans Airpark Lane Suite 1000	Midland	TX	79705	12/05/2019	9414810898765049479333
DRW Energy, LLC	400 W. Illinois, Suite 970	Midland	TX	79701	12/05/2019	9414810898765049479319
Beryl Oil and Gas, LP	P. O. Box 51440	Midland	TX	79710	12/05/2019	9414810898765049479326
Leopard Petroleum LP	P. O. Box 51440	Midland	TX	79710	12/05/2019	9414810898765049479289
Melissa L. McKinney Schoening	301 Sir Barton Parkway	Midland	TX	79705	12/05/2019	9414810898765049479296
EOG A, M, & Y Resources, Inc.	5509 Champions Drive	Midland	TX	79706	12/05/2019	9414810898765049479265
B. Jack Reed	506 Charismatic	Midland	TX	79705	12/05/2019	9414810898765049479272
GD McKinney Investments LP	300 N Mariefeld Ste1100	Midland	TX	79701	12/05/2019	9414810898765049479241

RECEIVED

JUN 28 2018

Office 1  
1000 N. Main St., Suite 100, Santa Fe, NM 87501  
Phone: (505) 425-4000 Fax: (505) 425-4001

Office 2  
1000 N. Main St., Suite 100, Santa Fe, NM 87501  
Phone: (505) 425-4000 Fax: (505) 425-4001

Office 3  
1000 N. Main St., Suite 100, Santa Fe, NM 87501  
Phone: (505) 425-4000 Fax: (505) 425-4001

Office 4  
1000 N. Main St., Suite 100, Santa Fe, NM 87501  
Phone: (505) 425-4000 Fax: (505) 425-4001

Office 5  
1000 N. Main St., Suite 100, Santa Fe, NM 87501  
Phone: (505) 425-4000 Fax: (505) 425-4001

State of New Mexico  
Energy, Minerals & Natural Resources Department  
OIL CONSERVATION DIVISION  
1220 South St. Francis Dr.  
Santa Fe, NM 87505

DISTRICT II-ARTESIA O.C.D.

Form C-102

Revised August 1, 2011

Submit one copy to appropriate  
District Office

☐ AMENDED REPORT

## WELL LOCATION AND ACREAGE DEDICATION PLAT

API Number <b>30-015-45083</b>	Pool Code <b>19220</b>	Pool Name <b>Purple Sage-Wolfcamp Pool</b>
Property Code <b>321633</b>	Property Name <b>OXBOW CC "17-8" FEDERAL COM</b>	Well Number <b>31H</b>
OCGRID No. <b>106916</b>	Operator Name <b>OXY USA INC.</b>	Elevation <b>2938.7'</b>

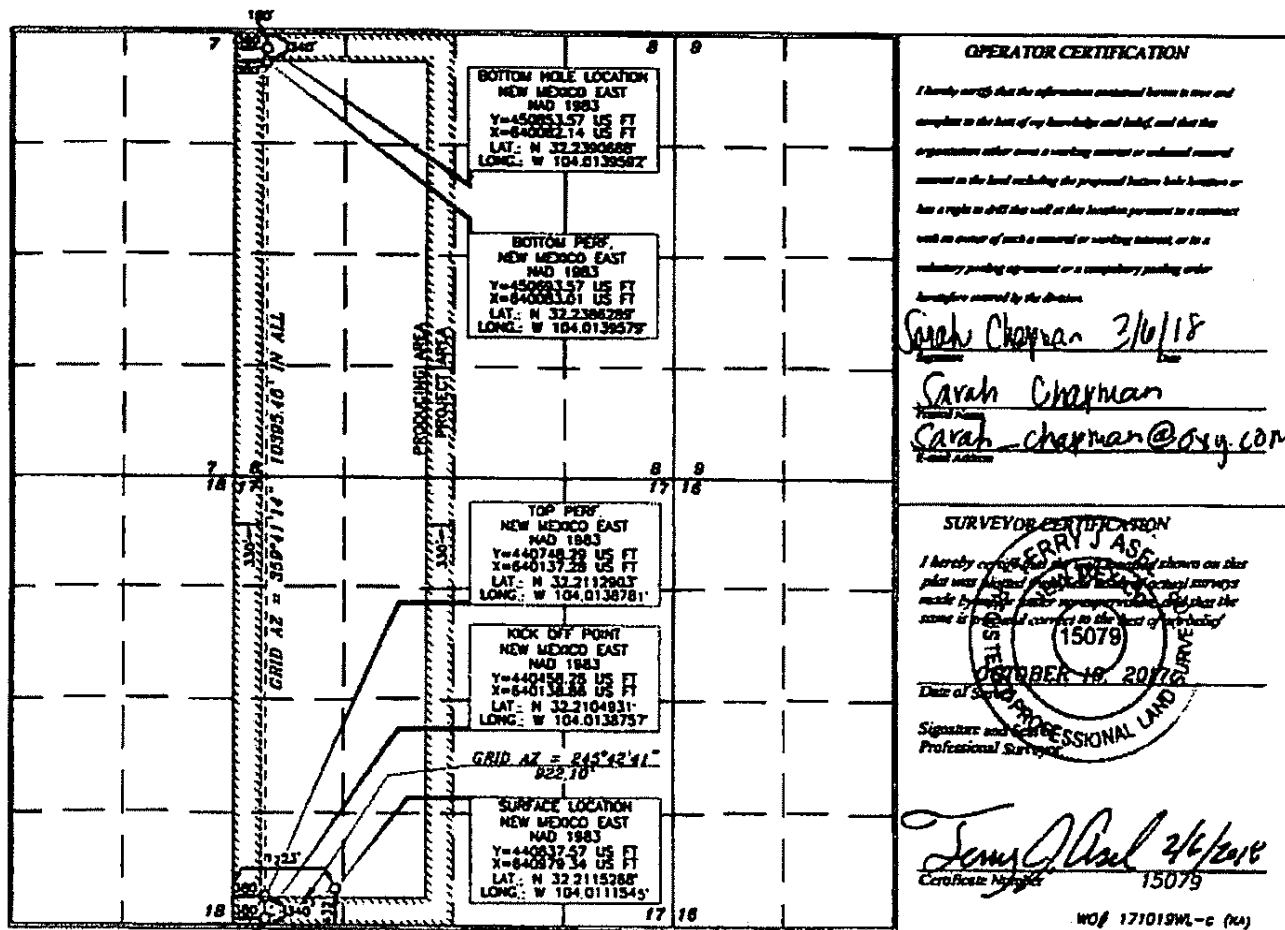
## Surface Location

UL or lot no.	Section	Township	Range	Lot No.	Feet from the	North/South line	Feet from the	East/West line	County
<b>M</b>	<b>17</b>	<b>24 SOUTH</b>	<b>29 EAST, N.M.P.M.</b>		<b>432'</b>	<b>SOUTH</b>	<b>1223'</b>	<b>WEST</b>	<b>EDDY</b>

## Bottom Hole Location If Different From Surface

UL or lot no.	Section	Township	Range	Lot No.	Feet from the	North/South line	Feet from the	East/West line	County
<b>D</b>	<b>8</b>	<b>24 SOUTH</b>	<b>29 EAST, N.M.P.M.</b>		<b>180'</b>	<b>NORTH</b>	<b>380'</b>	<b>WEST</b>	<b>EDDY</b>
Dedicated Acres <b>640</b>		Joint or Infill <b>Y</b>	Consolidation Code	Order No.					

No allowable will be assigned to this completion until all interests have been consolidated or a non-standard unit has been approved by the division.



## OPERATOR CERTIFICATION

I hereby certify that the information contained herein is true and complete to the best of my knowledge and belief, and that the organization either owns a working interest or undivided mineral interest in the land including the proposed bottom hole location or has a right to drill this well at the location pursuant to a contract with an owner of such a mineral or working interest, or to a voluntary pooling agreement or a compulsory pooling order heretofore entered by the Division.

Sarah Chapman 3/6/18  
Signature

Sarah Chapman  
Printed Name

Sarah\_chapman@oxy.com  
E-mail Address

## SURVEYOR CERTIFICATION

I hereby certify that the information shown on this plat was obtained from reliable sources and that the same is true and correct to the best of my knowledge.

15079  
Date of Survey

10/18/2017  
Signature and Seal of Professional Surveyor

15079  
Certificate Number

WO# 171019W-C (NA)

RWP 7-3-18

RECEIVED

JUN 28 2018

State of New Mexico  
Energy, Minerals & Natural Resources Department  
OIL CONSERVATION DIVISION  
1220 South St. Francis Dr.  
Santa Fe, NM 87505

State of New Mexico  
Energy, Minerals & Natural Resources Department  
OIL CONSERVATION DIVISION  
1220 South St. Francis Dr.  
Santa Fe, NM 87505

DISTRICT II-ARTESIA O.C.D.

Form C-102

Revised August 1, 2011

Submit one copy to appropriate  
District Office

☐ AMENDED REPORT

## WELL LOCATION AND ACREAGE DEDICATION PLAT

API Number <b>30-06 45084</b>	Pool Code <b>98220</b>	Pool Name <b>Yunque Sage Wolfcamp</b>
Property Code <b>321633</b>	Property Name <b>OXBOW CC "17-8" FEDERAL COM</b>	Well Number <b>32H</b>
OGED No. <b>16616</b>	Operator Name <b>OXY USA INC.</b>	Elevation <b>2938.2'</b>

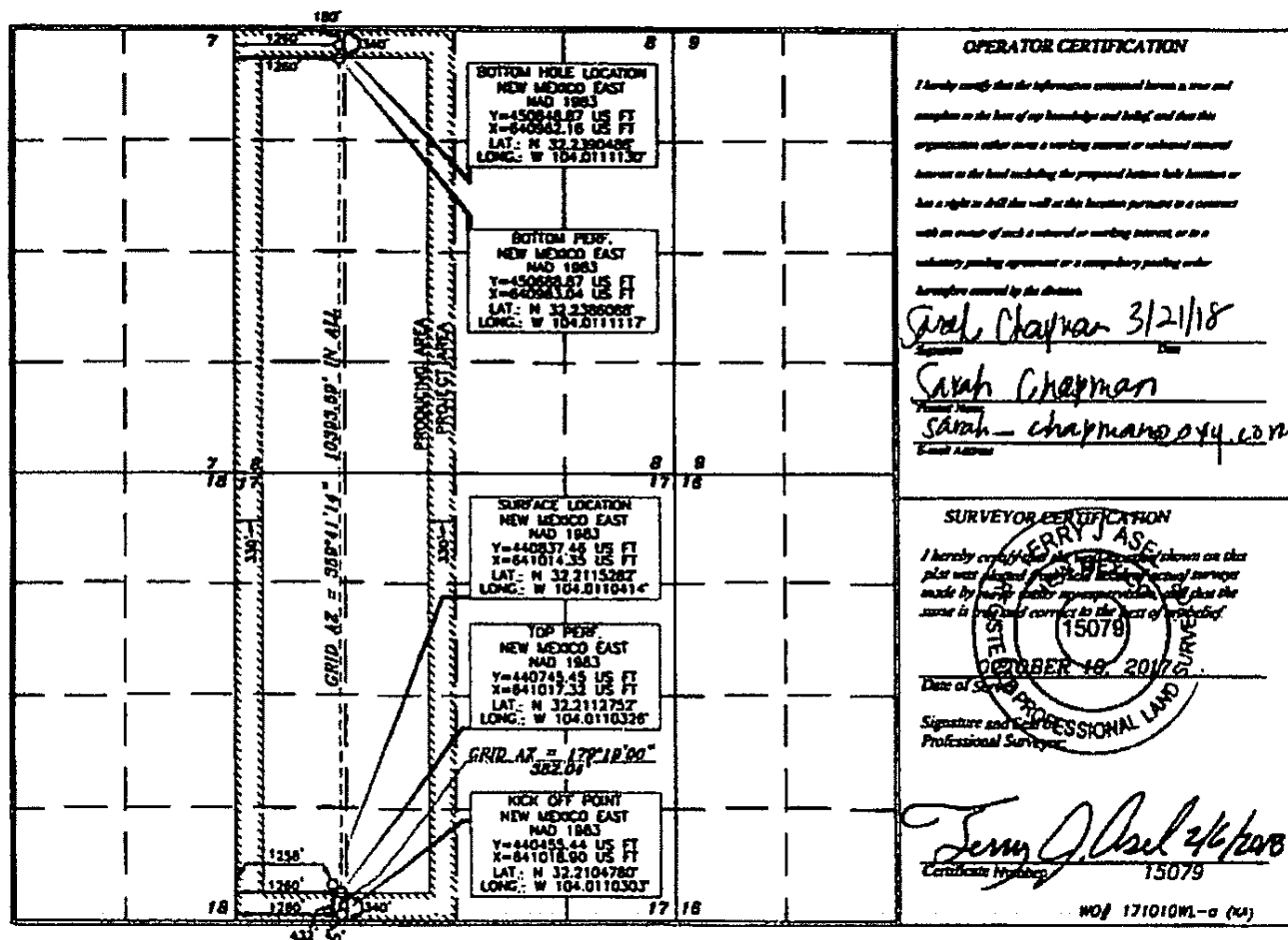
## Surface Location

UL or lot no.	Section	Township	Range	Lot No.	Feet from the	North/South line	Feet from the	East/West line	County
<b>M</b>	<b>17</b>	<b>24 SOUTH</b>	<b>29 EAST, N.M.P.M.</b>		<b>432'</b>	<b>SOUTH</b>	<b>1258'</b>	<b>WEST</b>	<b>EDDY</b>

## Bottom Hole Location If Different From Surface

UL or lot no.	Section	Township	Range	Lot No.	Feet from the	North/South line	Feet from the	East/West line	County
<b>D</b>	<b>8</b>	<b>24 SOUTH</b>	<b>29 EAST, N.M.P.M.</b>		<b>180'</b>	<b>NORTH</b>	<b>1260'</b>	<b>WEST</b>	<b>EDDY</b>
Dedicated Acres <b>640</b>		Joint or Infill <b>Y</b>	Consolidation Code	Order No.					

No allowable will be assigned to this completion until all interests have been consolidated or a non-standard unit has been approved by the division.



RWP 7-3-18

District I  
1625 N. French Dr., Hobbs, NM 88240  
Phone: (575) 393-6161 Fax: (575) 393-0720  
District II  
811 S. First St., Artesia, NM 88210  
Phone: (575) 748-1283 Fax: (575) 748-9720  
District III  
1000 Rio Brazos Road, Aztec, NM 87410  
Phone: (505) 334-6178 Fax: (505) 334-6170  
District IV  
1220 S. St. Francis Dr., Santa Fe, NM 87505  
Phone: (505) 476-3460 Fax: (505) 476-3462

State of New Mexico  
Energy, Minerals & Natural Resources Department  
**OIL CONSERVATION DIVISION**  
1220 South St. Francis Dr.  
Santa Fe, NM 87505

Form C-102  
Revised August 1, 2011  
Submit one copy to appropriate  
District Office

☒ AMENDED REPORT

**WELL LOCATION AND ACREAGE DEDICATION PLAT**

API Number <b>30-015-45085</b>	Pool Code <b>50371</b>	Pool Name <b>Pierce Crossing Bone Spring</b>
Property Code	Property Name <b>OXBOW CC "17-8" FEDERAL COM</b>	Well Number <b>33H</b>
OGRID No. <b>16694</b>	Operator Name <b>OXY USA INC.</b>	Elevation <b>2937.9'</b>

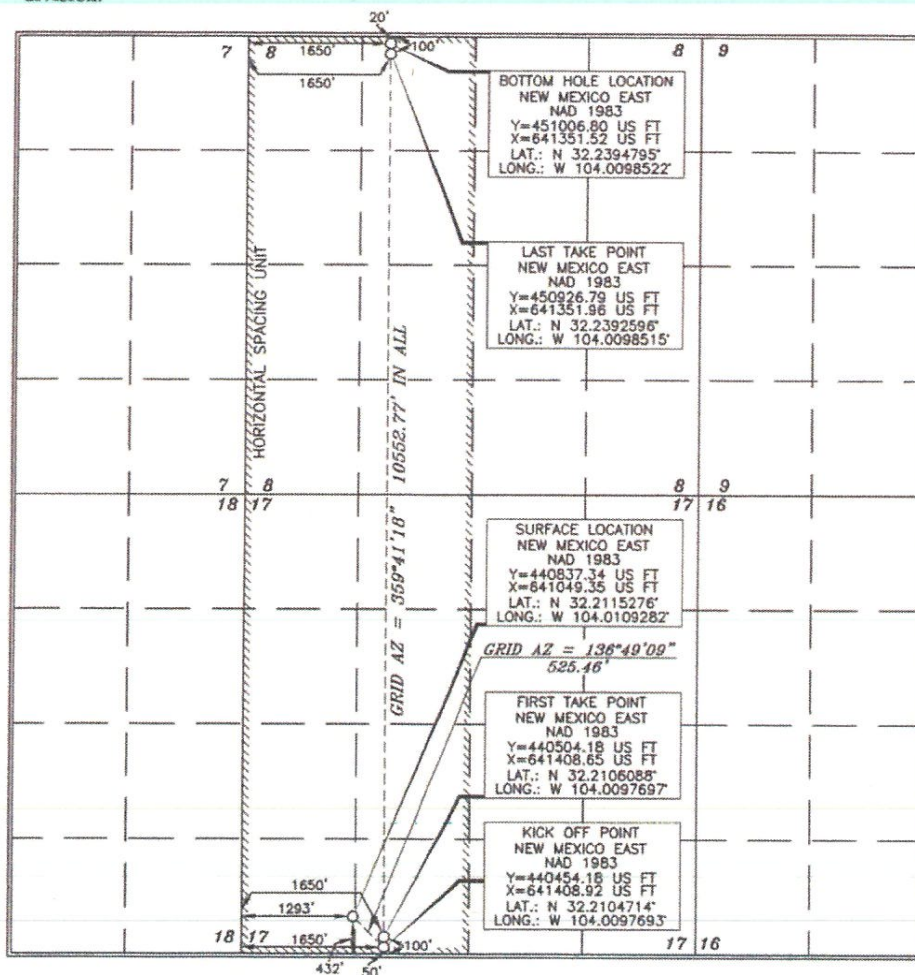
**Surface Location**

UL or lot no.	Section	Township	Range	Lot Idn	Feet from the	North/South line	Feet from the	East/West line	County
<b>M</b>	<b>17</b>	<b>24 SOUTH</b>	<b>29 EAST, N.M.P.M.</b>		<b>432'</b>	<b>SOUTH</b>	<b>1293'</b>	<b>WEST</b>	<b>EDDY</b>

**Bottom Hole Location If Different From Surface**

UL or lot no.	Section	Township	Range	Lot Idn	Feet from the	North/South line	Feet from the	East/West line	County
<b>C</b>	<b>8</b>	<b>24 SOUTH</b>	<b>29 EAST, N.M.P.M.</b>		<b>20'</b>	<b>NORTH</b>	<b>1650'</b>	<b>WEST</b>	<b>EDDY</b>
Dedicated Acres <b>6.40</b>	Joint or Infill	Consolidation Code	Order No.						

No allowable will be assigned to this completion until all interests have been consolidated or a non-standard unit has been approved by the division.



**OPERATOR CERTIFICATION**

I hereby certify that the information contained herein is true and complete to the best of my knowledge and belief, and that this organization either owns a working interest or unleased mineral interest in the land including the proposed bottom hole location or has a right to drill this well at this location pursuant to a contract with an owner of such a mineral or working interest, or to a voluntary pooling agreement or a compulsory pooling order heretofore entered by the division.

**Sarah Chapman** 6/12/19  
Signature Date  
**Sarah Chapman**  
Printed Name  
**sarah.chapman@oxy.com**  
E-mail Address

**SURVEYOR CERTIFICATION**

I hereby certify that the well location shown on this plat was plotted from the actual surveys made by me or under my supervision, and that the same is true and correct to the best of my belief.

**TERRY J. ASH**  
15079  
OCTOBER 19, 2017  
Date of Survey  
Signature and Seal  
Professional Surveyor

**Terry J. Ash** 5/3/2019  
Certificate Number 15079

Intent ☒ As Drilled ☐

API # 30-015-45085		
Operator Name: OXY USA Inc.	Property Name: OXBOW CC 17-8 Federal Com	Well Number 33H

## Kick Off Point (KOP)

UL N	Section 17	Township 24S	Range 29E	Lot	Feet 50	From N/S South	Feet 1650	From E/W West	County EDDY
Latitude 32.2104714					Longitude -104.0097693			NAD NAD83	

## First Take Point (FTP)

UL N	Section 17	Township 24S	Range 29E	Lot	Feet 100	From N/S South	Feet 1650	From E/W West	County EDDY
Latitude 32.2106888					Longitude -104.0097697			NAD NAD83	

## Last Take Point (LTP)

UL C	Section 8	Township 24S	Range 29E	Lot	Feet 100	From N/S North	Feet 1650	From E/W West	County EDDY
Latitude 32.2392596					Longitude -104.0098515			NAD NAD83	

Is this well the defining well for the Horizontal Spacing Unit? ☒Is this well an infill well? ☐

If infill is yes please provide API if available, Operator Name and well number for Defining well for Horizontal Spacing Unit.

API #		
Operator Name:	Property Name:	Well Number

KZ 06/29/2018

NM OIL CONSERVATION  
ARTESIA DISTRICT

OCT 16 2019

Form C-102

Revised August 1, 2011

Submit one copy to appropriate

District Office

RECEIVED

☒ AMENDED REPORT

District I  
 1625 N. French Dr., Hobbs, NM 88240  
 Phone: (505) 393-6161 Fax: (505) 393-0720  
 District II  
 811 E. First St., Artesia, NM 88210  
 Phone: (505) 748-1283 Fax: (505) 748-9720  
 District III  
 1000 Rio Brazos Road, Aztec, NM 87410  
 Phone: (505) 234-6178 Fax: (505) 234-6170  
 District IV  
 1220 S. St. Francis Dr., Santa Fe, NM 87505  
 Phone: (505) 476-3450 Fax: (505) 476-3452

State of New Mexico  
 Energy, Minerals & Natural Resources Department  
 OIL CONSERVATION DIVISION  
 1220 South St. Francis Dr.  
 Santa Fe, NM 87505

## WELL LOCATION AND ACREAGE DEDICATION PLAT

API Number <b>30-015-46400</b>	Pool Code <b>98220</b>	Pool Name <b>Purple Sage Wolfcamp</b>
Property Code <b>321633</b>	Property Name <b>OXBOW CC "17-8" FEDERAL COM</b>	Well Number <b>37H</b>
OGRID No. <b>16694</b>	Operator Name <b>OXY USA INC.</b>	Elevation <b>2936.1'</b>

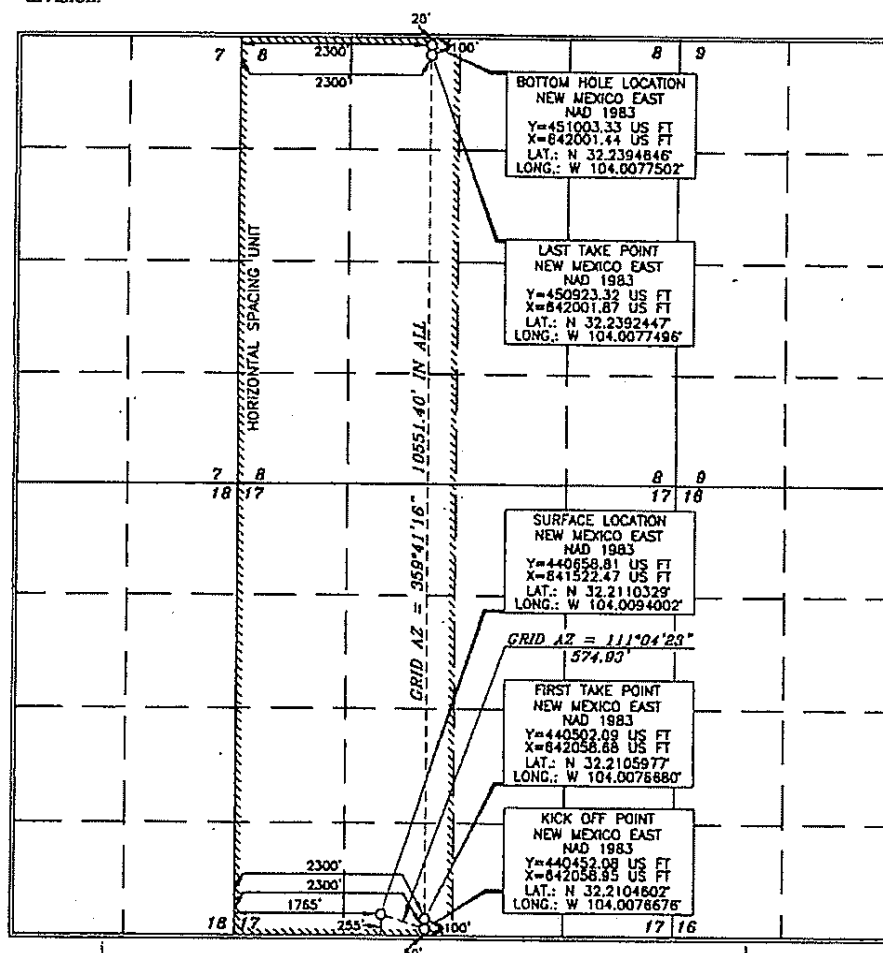
## Surface Location

UL or lot no.	Section	Township	Range	Lot Ida	Feet from the	North/South line	Feet from the	East/West line	County
<b>N</b>	<b>17</b>	<b>24 SOUTH</b>	<b>29 EAST, N.M.P.M.</b>		<b>255'</b>	<b>SOUTH</b>	<b>1765'</b>	<b>WEST</b>	<b>EDDY</b>

## Bottom Hole Location If Different From Surface

UL or lot no.	Section	Township	Range	Lot Ida	Feet from the	North/South line	Feet from the	East/West line	County
<b>C</b>	<b>8</b>	<b>24 SOUTH</b>	<b>29 EAST, N.M.P.M.</b>		<b>20'</b>	<b>NORTH</b>	<b>2300'</b>	<b>WEST</b>	<b>EDDY</b>
Dedicated Acres <b>640</b>	Joint or Infill <b>Y</b>	Consolidation Code	Order No.						

No allowable will be assigned to this completion until all interests have been consolidated or a non-standard unit has been approved by the division.



## OPERATOR CERTIFICATION

I hereby certify that the information contained herein is true and complete to the best of my knowledge and belief, and that this organization either owns a working interest or undivided mineral interest in the land including the proposed bottom hole location or has a right to drill this well at this location pursuant to a contract with an owner of such a mineral or working interest, or to a voluntary pooling agreement or a compulsory pooling order.

Authorized by the division

Signature: *David Stewart* Date: **10/31/19**

Printed Name: **David Stewart**E-mail Address: **david.stewart@oxy.com**

## SURVEYOR CERTIFICATION

I hereby certify that the information contained herein is true and complete to the best of my knowledge and belief, and that this organization either owns a working interest or undivided mineral interest in the land including the proposed bottom hole location or has a right to drill this well at this location pursuant to a contract with an owner of such a mineral or working interest, or to a voluntary pooling agreement or a compulsory pooling order.

Signature and Seal: *ERRY J. AS* Date of Survey: **DECEMBER 4, 2018**

Professional Surveyor: **15079**Certificate Number: **15079**

WOP 181204WL-c (Rev. C) (KA)

*Return 1919 NSL Required*