

RECEIVED: 2/18/20	REVIEWER: DM	TYPE: PLC	APP NO: pMAM1920358824
-------------------	--------------	-----------	------------------------

ABOVE THIS TABLE FOR OCD DIVISION USE ONLY

**NEW MEXICO OIL CONSERVATION DIVISION**  
 - Geological & Engineering Bureau -  
 1220 South St. Francis Drive, Santa Fe, NM 87505



### ADMINISTRATIVE APPLICATION CHECKLIST

THIS CHECKLIST IS MANDATORY FOR ALL ADMINISTRATIVE APPLICATIONS FOR EXCEPTIONS TO DIVISION RULES AND REGULATIONS WHICH REQUIRE PROCESSING AT THE DIVISION LEVEL IN SANTA FE

Applicant: \_\_\_\_\_ OGRID Number: \_\_\_\_\_  
 Well Name: \_\_\_\_\_ API: \_\_\_\_\_  
 Pool: \_\_\_\_\_ Pool Code: \_\_\_\_\_

### SUBMIT ACCURATE AND COMPLETE INFORMATION REQUIRED TO PROCESS THE TYPE OF APPLICATION INDICATED BELOW

1) **TYPE OF APPLICATION:** Check those which apply for [A]

A. Location – Spacing Unit – Simultaneous Dedication

☐ NSL      ☐ NSP (PROJECT AREA)      ☐ NSP (PRORATION UNIT)      ☐ SD

B. Check one only for [ I ] or [ II ]

[ I ] Commingling – Storage – Measurement

☐ DHC    ☐ CTB    ☐ PLC    ☐ PC    ☐ OLS    ☐ OLM

[ II ] Injection – Disposal – Pressure Increase – Enhanced Oil Recovery

☐ WFX    ☐ PMX    ☐ SWD    ☐ IPI    ☐ EOR    ☐ PPR

2) **NOTIFICATION REQUIRED TO:** Check those which apply.

- A. ☐ Offset operators or lease holders
- B. ☐ Royalty, overriding royalty owners, revenue owners
- C. ☐ Application requires published notice
- D. ☐ Notification and/or concurrent approval by SLO
- E. ☐ Notification and/or concurrent approval by BLM
- F. ☐ Surface owner
- G. ☐ For all of the above, proof of notification or publication is attached, and/or,
- H. ☐ No notice required

#### FOR OCD ONLY

- ☐ Notice Complete
- ☐ Application Content Complete

- 3) **CERTIFICATION:** I hereby certify that the information submitted with this application for administrative approval is **accurate** and **complete** to the best of my knowledge. I also understand that **no action** will be taken on this application until the required information and notifications are submitted to the Division.

**Note: Statement must be completed by an individual with managerial and/or supervisory capacity.**

\_\_\_\_\_  
 Print or Type Name

\_\_\_\_\_  
 Date

\_\_\_\_\_  
 Phone Number

\_\_\_\_\_  
 Signature

\_\_\_\_\_  
 e-mail Address

Office  
 District I – (575) 393-6161  
 1625 N. French Dr., Hobbs, NM 88240  
 District II – (575) 748-1283  
 811 S. First St., Artesia, NM 88210  
 District III – (505) 334-6178  
 1000 Rio Brazos Rd., Aztec, NM 87410  
 District IV – (505) 476-3460  
 1220 S. St. Francis Dr., Santa Fe, NM  
 87505

State of New Mexico  
 Energy, Minerals and Natural Resources

Form C-103  
 Revised July 18, 2013

OIL CONSERVATION DIVISION  
 1220 South St. Francis Dr.  
 Santa Fe, NM 87505

WELL API NO. 30-025-46332
5. Indicate Type of Lease STATE <input checked="" type="checkbox"/> FEE <input type="checkbox"/>
6. State Oil & Gas Lease No. Savage 2 State Com
7. Lease Name or Unit Agreement Name VB-1186-0001 & VB-1194-0001
8. Well Number 702H
9. OGRID Number 7377
10. Pool name or Wildcat WC-025 G-09 S253309A; UPR Wolfcamp [98180]

<b>SUNDRY NOTICES AND REPORTS ON WELLS</b> (DO NOT USE THIS FORM FOR PROPOSALS TO DRILL OR TO DEEPEN OR PLUG BACK TO A DIFFERENT RESERVOIR. USE "APPLICATION FOR PERMIT" (FORM C-101) FOR SUCH PROPOSALS.)	
1. Type of Well: Oil Well <input checked="" type="checkbox"/> Gas Well <input type="checkbox"/> Other <input type="checkbox"/>	
2. Name of Operator EOG Resources, Inc.	
3. Address of Operator P.O. Box 2267 Midland, Texas 79702	
4. Well Location Unit Letter <u>C</u> : <u>505</u> feet from the <u>North</u> line and <u>1671</u> feet from the <u>West</u> line Section <u>2</u> Township <u>25S</u> Range <u>32E</u> NMPM <u>Lea</u> County	
11. Elevation (Show whether DR, RKB, RT, GR, etc.)	

12. Check Appropriate Box to Indicate Nature of Notice, Report or Other Data

<b>NOTICE OF INTENTION TO:</b> PERFORM REMEDIAL WORK <input type="checkbox"/> PLUG AND ABANDON <input type="checkbox"/> TEMPORARILY ABANDON <input type="checkbox"/> CHANGE PLANS <input type="checkbox"/> PULL OR ALTER CASING <input type="checkbox"/> MULTIPLE COMPL <input type="checkbox"/> DOWNHOLE COMMINGLE <input type="checkbox"/> CLOSED-LOOP SYSTEM <input type="checkbox"/> OTHER: Surface Commingle <input checked="" type="checkbox"/>		<b>SUBSEQUENT REPORT OF:</b> REMEDIAL WORK <input type="checkbox"/> ALTERING CASING <input type="checkbox"/> COMMENCE DRILLING OPNS. <input type="checkbox"/> P AND A <input type="checkbox"/> CASING/CEMENT JOB <input type="checkbox"/> OTHER: <input type="checkbox"/>	
-------------------------------------------------------------------------------------------------------------------------------------------------------------------------------------------------------------------------------------------------------------------------------------------------------------------------------------------------------------------------------------------------------------------------------------------------------------------------	--	---------------------------------------------------------------------------------------------------------------------------------------------------------------------------------------------------------------------------------------------------------------------------------------	--

13. Describe proposed or completed operations. (Clearly state all pertinent details, and give pertinent dates, including estimated date of starting any proposed work). SEE RULE 19.15.7.14 NMAC. For Multiple Completions: Attach wellbore diagram of proposed completion or recompletion.

EOG Resources, Inc. respectfully requests to amend PLC 591 to include the following wells:

Savage 2 State Com 702H	API: 30-025-46332	WC-025 G-09 S253309A; Upper Wolfcamp [98180]
Savage 2 State Com 704H	API: 30-025-46333	WC-025 G-09 S253309A; Upper Wolfcamp [98180]
Savage 2 State Com 705H	API: 30-025-46342	WC-025 G-09 S253309A; Upper Wolfcamp [98180]
Savage 2 State Com 707H	API: 30-025-46348	WC-025 G-09 S253309A; Upper Wolfcamp [98180]
Savage 2 State Com 708H	API: 30-025-46337	WC-025 G-09 S253309A; Upper Wolfcamp [98180]
Savage 2 State Com 721H	API: 30-025-46338	WC-025 G-09 S253309A; Upper Wolfcamp [98180]
Savage 2 State Com 722H	API: 30-025-46339	WC-025 G-09 S253309A; Upper Wolfcamp [98180]
Savage 2 State Com 723H	API: 30-025-46340	WC-025 G-09 S253309A; Upper Wolfcamp [98180]
Savage 2 State Com 726H	API: 30-025-46343	WC-025 G-09 S253309A; Upper Wolfcamp [98180]

Please see attached supporting documentation. These wells have uniform ownership. State Land Office has received notice of this application

Spud Date:

Rig Release Date:

I hereby certify that the information above is true and complete to the best of my knowledge and belief.

SIGNATURE Lisa Trascher TITLE Regulatory Specialist DATE 2/18/2020

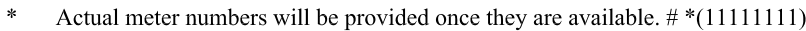
Type or print name Lisa Trascher E-mail address: lisa\_trascher@eogresources.com PHONE: 432-247-6331

**For State Use Only**

APPROVED BY: \_\_\_\_\_ TITLE \_\_\_\_\_ DATE \_\_\_\_\_

Conditions of Approval (if any):

**GAS METER** #\*11111111  
**GL METER** #\*11111111  
**OIL METER** #\*11111111  
**WATER METER** #\*11111111



**Process and Flow Descriptions:**

The production from each well will flow into a dedicated 3-phase separator. The production stream will be separated into 3 independent streams (gas, oil, and water) by the separator and each stream will be measured individually after it exits the separator. The gas will be measured using a senior orifice meter before flowing into a common header. Process gas used is allocated to the wells on a mass balance basis based on this measurement. The remaining residue gas is allocated to the wells by energy balance based off of routine gas sampling at the meter. *Gas measurements on the high pressure separator are aligned with API MPMS 20.1*

SAVAGE 2 STATE COM #101H gas allocation meter is (S/N 67559101)  
SAVAGE 2 STATE COM #201H gas allocation meter is (S/N 67559102)  
SAVAGE 2 STATE COM #301H gas allocation meter is (S/N 67559103)  
SAVAGE 2 STATE COM #501H gas allocation meter is (S/N 67559104)  
SAVAGE 2 STATE COM #701H gas allocation meter is (S/N 67559105)  
SAVAGE 2 STATE COM #502H gas allocation meter is (S/N 67559106)  
SAVAGE 2 STATE COM #503H gas allocation meter is (S/N 67559107)  
SAVAGE 2 STATE COM #504H gas allocation meter is (S/N 67559108)  
SAVAGE 2 STATE COM #505Y gas allocation meter is (S/N 67559109)  
SAVAGE 2 STATE COM #506H gas allocation meter is (S/N 67559110)  
SAVAGE 2 STATE COM #507H gas allocation meter is (S/N 67559111)  
SAVAGE 2 STATE COM #508H gas allocation meter is (S/N 67559112)  
SAVAGE 2 STATE COM #741H gas allocation meter is (S/N \*11111111)  
SAVAGE 2 STATE COM #702H gas allocation meter is (S/N \*11111111)  
SAVAGE 2 STATE COM #704H gas allocation meter is (S/N \*11111111)  
SAVAGE 2 STATE COM #705H gas allocation meter is (S/N \*11111111)  
SAVAGE 2 STATE COM #707H gas allocation meter is (S/N \*11111111)  
SAVAGE 2 STATE COM #708H gas allocation meter is (S/N \*11111111)  
SAVAGE 2 STATE COM #721H gas allocation meter is (S/N \*11111111)  
SAVAGE 2 STATE COM #722H gas allocation meter is (S/N \*11111111)  
SAVAGE 2 STATE COM #723H gas allocation meter is (S/N \*11111111)  
SAVAGE 2 STATE COM #726H gas allocation meter is (S/N \*11111111)

The oil from the separators will be measured using a Coriolis meter. *Oil measurements on the high pressure separator are aligned with API MPMS 20.1*

SAVAGE 2 STATE COM #101H oil allocation meter is (S/N 10-75562)  
SAVAGE 2 STATE COM #201H oil allocation meter is (S/N 10-75563)  
SAVAGE 2 STATE COM #301H oil allocation meter is (S/N 10-75564)  
SAVAGE 2 STATE COM #501H oil allocation meter is (S/N 10-75565)  
SAVAGE 2 STATE COM #701H oil allocation meter is (S/N 10-75566)  
SAVAGE 2 STATE COM #502H oil allocation meter is (S/N 10-76444)  
SAVAGE 2 STATE COM #503H oil allocation meter is (S/N 10-76432)  
SAVAGE 2 STATE COM #504H oil allocation meter is (S/N 10-76433)  
SAVAGE 2 STATE COM #505Y oil allocation meter is (S/N 10-140132)  
SAVAGE 2 STATE COM #506H oil allocation meter is (S/N 10-76435)  
SAVAGE 2 STATE COM #507H oil allocation meter is (S/N 10-76436)  
SAVAGE 2 STATE COM #508H oil allocation meter is (S/N 10-76437)

SAVAGE 2 STATE COM #741H oil allocation meter is (S/N \*11-11111)  
SAVAGE 2 STATE COM #741H oil allocation meter is (S/N \*11-11111)  
SAVAGE 2 STATE COM #741H oil allocation meter is (S/N \*11-11111)  
SAVAGE 2 STATE COM #741H oil allocation meter is (S/N \*11-11111)  
SAVAGE 2 STATE COM #741H oil allocation meter is (S/N \*11-11111)  
SAVAGE 2 STATE COM #741H oil allocation meter is (S/N \*11-11111)  
SAVAGE 2 STATE COM #741H oil allocation meter is (S/N \*11-11111)  
SAVAGE 2 STATE COM #741H oil allocation meter is (S/N \*11-11111)  
SAVAGE 2 STATE COM #741H oil allocation meter is (S/N \*11-11111)  
SAVAGE 2 STATE COM #741H oil allocation meter is (S/N \*11-11111)

The water will be measured using a vortex meter. The water from each separator is combined in a common header and flows into (2) 750 barrel coated steel tanks. Guided wave radar is used to measure water volumes in these tanks. The oil from each separator will be combined into a common header and flow into a heated 3-phase separator to aid separation of water entrained in the oil. *Gas from the heated separator is measured and allocated back to the wells on an oil volume based allocation.*

Water from the heated separator flows into the common water header connected to the (2) 750 barrel water tanks. The water is then pumped and/or trucked to a salt water disposal well.

The oil from the heated 3-phase separator flows through a vapor recovery tower (VRT) where gas is allowed to breakout at a lower pressure, and then the oil flows into (4) 750 barrel coated steel tanks. Guided wave radar is used to measure water and oil volumes in these tanks and can be used for volume verification during diagnosis of upset conditions. Oil is pumped out of the tanks through a LACT with Coriolis measurement into a truck or a pipeline. The LACT is the custody transfer point and the measurement point for oil sales.

After the gas from each separator is measured it is combined into a common header. The gas from the heated 3-phase separator also flows into this header. The gas flows through the header to a custody transfer senior orifice meter (#67559151) that serves as our lease gas production meter. If the pipeline is experiencing problems and cannot take any gas, the gas will flow through the produced gas emergency flare meter (#67559156) to the flare. If an individual well needed to be flared for any operation reason it will be manually routed through the individual well flare meter (#67559157) to the flare. The overhead gas from the vapor recovery tower is compressed by an electric drive vapor recovery compressor and then measured by a custody transfer senior orifice meter (#67559186). The gas from the vapor recovery system combines with the gas from the lease production meter and flows into our gas gathering pipeline system.



District I  
1625 N. French Dr., Hobbs, NM 88240  
Phone: (575) 393-6161 Fax: (575) 393-0720  
District II  
811 S. First St., Artesia, NM 88210  
Phone: (575) 748-1283 Fax: (575) 748-9720  
District III  
1000 Rio Brazos Road, Aztec, NM 87410  
Phone: (505) 334-6178 Fax: (505) 334-6170  
District IV  
1220 S. St. Francis Dr., Santa Fe, NM 87505  
Phone: (505) 476-3460 Fax: (505) 476-3462

State of New Mexico  
Energy, Minerals & Natural Resources  
Department  
OIL CONSERVATION DIVISION  
1220 South St. Francis Dr.  
Santa Fe, NM 87505

FORM C-102

Revised August 1, 2011

Submit one copy to appropriate

District Office

☐ AMENDED REPORT

## WELL LOCATION AND ACREAGE DEDICATION PLAT

<sup>1</sup> API Number 30-025-46332	<sup>2</sup> Pool Code 98180	<sup>3</sup> Pool Name WC-025 G-09 S253309A; Upper Wolfcamp
<sup>4</sup> Property Code 321651	<sup>5</sup> Property Name SAVAGE 2 STATE COM	<sup>6</sup> Well Number 702H
<sup>7</sup> OGRID No. 7377	<sup>8</sup> Operator Name EOG RESOURCES, INC.	<sup>9</sup> Elevation 3520'

<sup>10</sup>Surface Location

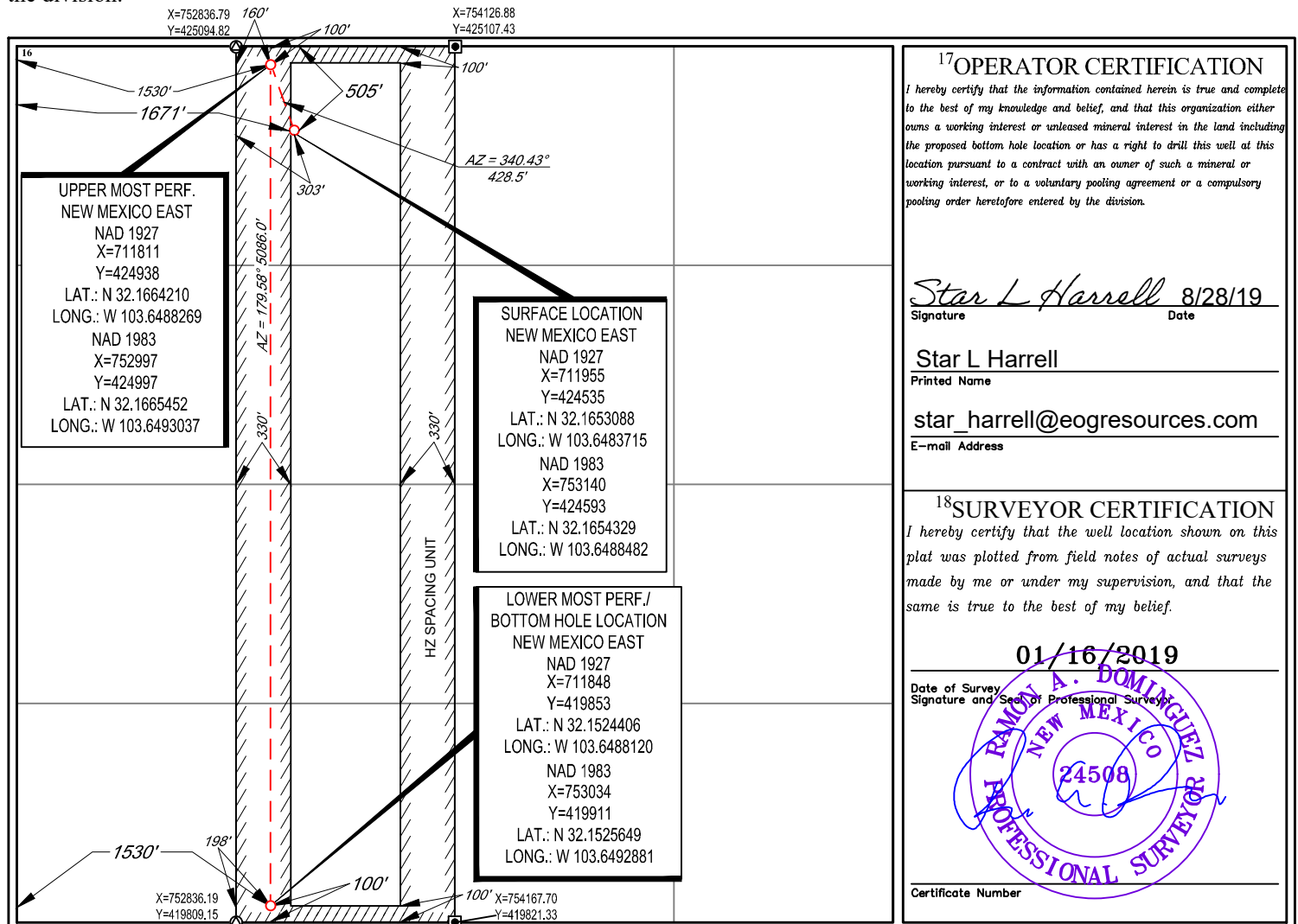
UL or lot no.	Section	Township	Range	Lot Idn	Feet from the	North/South line	Feet from the	East/West line	County
3	2	25-S	32-E	-	505'	NORTH	1671'	WEST	LEA

<sup>11</sup>Bottom Hole Location If Different From Surface

UL or lot no.	Section	Township	Range	Lot Idn	Feet from the	North/South line	Feet from the	East/West line	County
N	2	25-S	32-E	-	100'	SOUTH	1530'	WEST	LEA

<sup>12</sup> Dedicated Acres 160.19	<sup>13</sup> Joint or Infill	<sup>14</sup> Consolidation Code	<sup>15</sup> Order No.
-----------------------------------------	-------------------------------	----------------------------------	-------------------------

No allowable will be assigned to this completion until all interests have been consolidated or a non-standard unit has been approved by the division.



District I  
1625 N. French Dr., Hobbs, NM 88240  
Phone: (575) 393-6161 Fax: (575) 393-0720  
District II  
811 S. First St., Artesia, NM 88210  
Phone: (575) 748-1283 Fax: (575) 748-9720  
District III  
1000 Rio Brazos Road, Aztec, NM 87410  
Phone: (505) 334-6178 Fax: (505) 334-6170  
District IV  
1220 S. St. Francis Dr., Santa Fe, NM 87505  
Phone: (505) 476-3460 Fax: (505) 476-3462

State of New Mexico  
Energy, Minerals & Natural Resources  
Department  
OIL CONSERVATION DIVISION  
1220 South St. Francis Dr.  
Santa Fe, NM 87505

FORM C-102

Revised August 1, 2011

Submit one copy to appropriate

District Office

☐ AMENDED REPORT

## WELL LOCATION AND ACREAGE DEDICATION PLAT

<sup>1</sup> API Number 30-025- 46333	<sup>2</sup> Pool Code 98180	<sup>3</sup> Pool Name WC-025 G-09 S253309A; Upper Wolfcamp
<sup>4</sup> Property Code 321651	<sup>5</sup> Property Name SAVAGE 2 STATE COM	<sup>6</sup> Well Number 704H
<sup>7</sup> OGRID No. 7377	<sup>8</sup> Operator Name EOG RESOURCES, INC.	<sup>9</sup> Elevation 3528'

<sup>10</sup>Surface Location

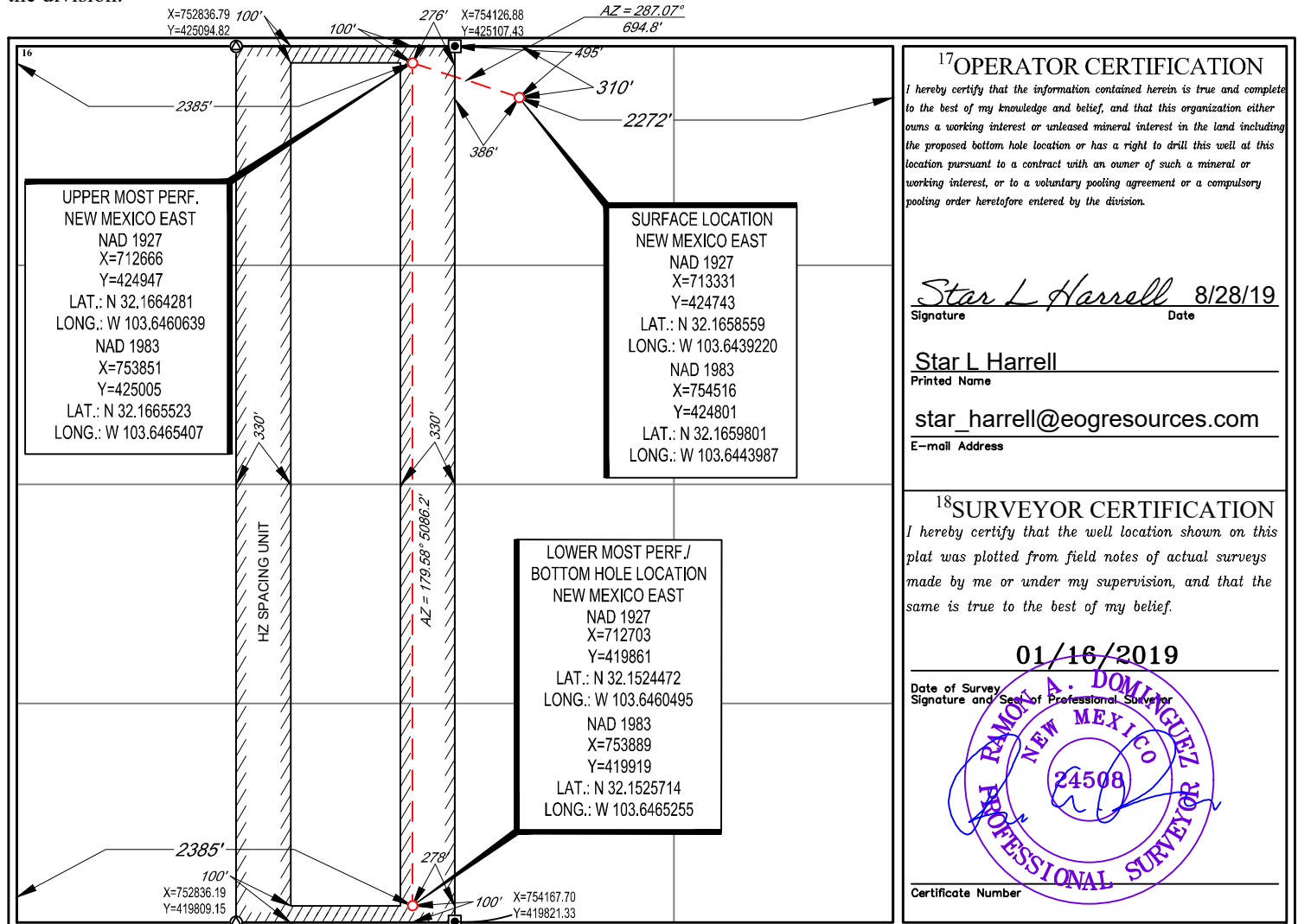
UL or lot no.	Section	Township	Range	Lot Idn	Feet from the	North/South line	Feet from the	East/West line	County
2	2	25-S	32-E	-	310'	NORTH	2272'	EAST	LEA

<sup>11</sup>Bottom Hole Location If Different From Surface

UL or lot no.	Section	Township	Range	Lot Idn	Feet from the	North/South line	Feet from the	East/West line	County
N	2	25-S	32-E	-	100'	SOUTH	2385'	WEST	LEA

<sup>12</sup> Dedicated Acres 160.19	<sup>13</sup> Joint or Infill	<sup>14</sup> Consolidation Code	<sup>15</sup> Order No.
-----------------------------------------	-------------------------------	----------------------------------	-------------------------

No allowable will be assigned to this completion until all interests have been consolidated or a non-standard unit has been approved by the division.

<sup>17</sup>OPERATOR CERTIFICATION

I hereby certify that the information contained herein is true and complete to the best of my knowledge and belief, and that this organization either owns a working interest or unleased mineral interest in the land including the proposed bottom hole location or has a right to drill this well at this location pursuant to a contract with an owner of such a mineral or working interest, or to a voluntary pooling agreement or a compulsory pooling order heretofore entered by the division.

Star L Harrell 8/28/19  
Signature Date

Star L Harrell  
Printed Name

star\_harrell@eogresources.com  
E-mail Address

<sup>18</sup>SURVEYOR CERTIFICATION

I hereby certify that the well location shown on this plat was plotted from field notes of actual surveys made by me or under my supervision, and that the same is true to the best of my belief.

01/16/2019

Date of Survey  
Signature and Seal of Professional Surveyor

RAMON A. DOMINGUEZ  
NEW MEXICO  
24508  
PROFESSIONAL SURVEYOR

Certificate Number

**District I**  
1625 N. French Dr., Hobbs, NM 88240  
Phone: (575) 393-6161 Fax: (575) 393-0720

**District II**  
811 S. First St., Artesia, NM 88210  
Phone: (575) 748-1283 Fax: (575) 748-9720

**District III**  
1000 Rio Brazos Road, Aztec, NM 87410  
Phone: (505) 334-6178 Fax: (505) 334-6170

**District IV**  
1220 S. St. Francis Dr., Santa Fe, NM 87505  
Phone: (505) 476-3460 Fax: (505) 476-3462

State of New Mexico  
Energy, Minerals & Natural Resources  
Department  
OIL CONSERVATION DIVISION  
1220 South St. Francis Dr.  
Santa Fe, NM 87505

**FORM C-102**

Revised August 1, 2011

**Submit one copy to appropriate**

**District Office**

☐ **AMENDED REPORT**

# WELL LOCATION AND ACREAGE DEDICATION PLAT

<sup>1</sup> API Number 30-025- 46342	<sup>2</sup> Pool Code 98180	<sup>3</sup> Pool Name WC-025 G-09 S253309A; Upper Wolfcamp
<sup>4</sup> Property Code 321651	<sup>5</sup> Property Name SAVAGE 2 STATE COM	
<sup>7</sup> GRID No. 7377	<sup>8</sup> Operator Name EOG RESOURCES, INC.	<sup>6</sup> Well Number 705H  <sup>9</sup> Elevation 3528'

## <sup>10</sup>Surface Location

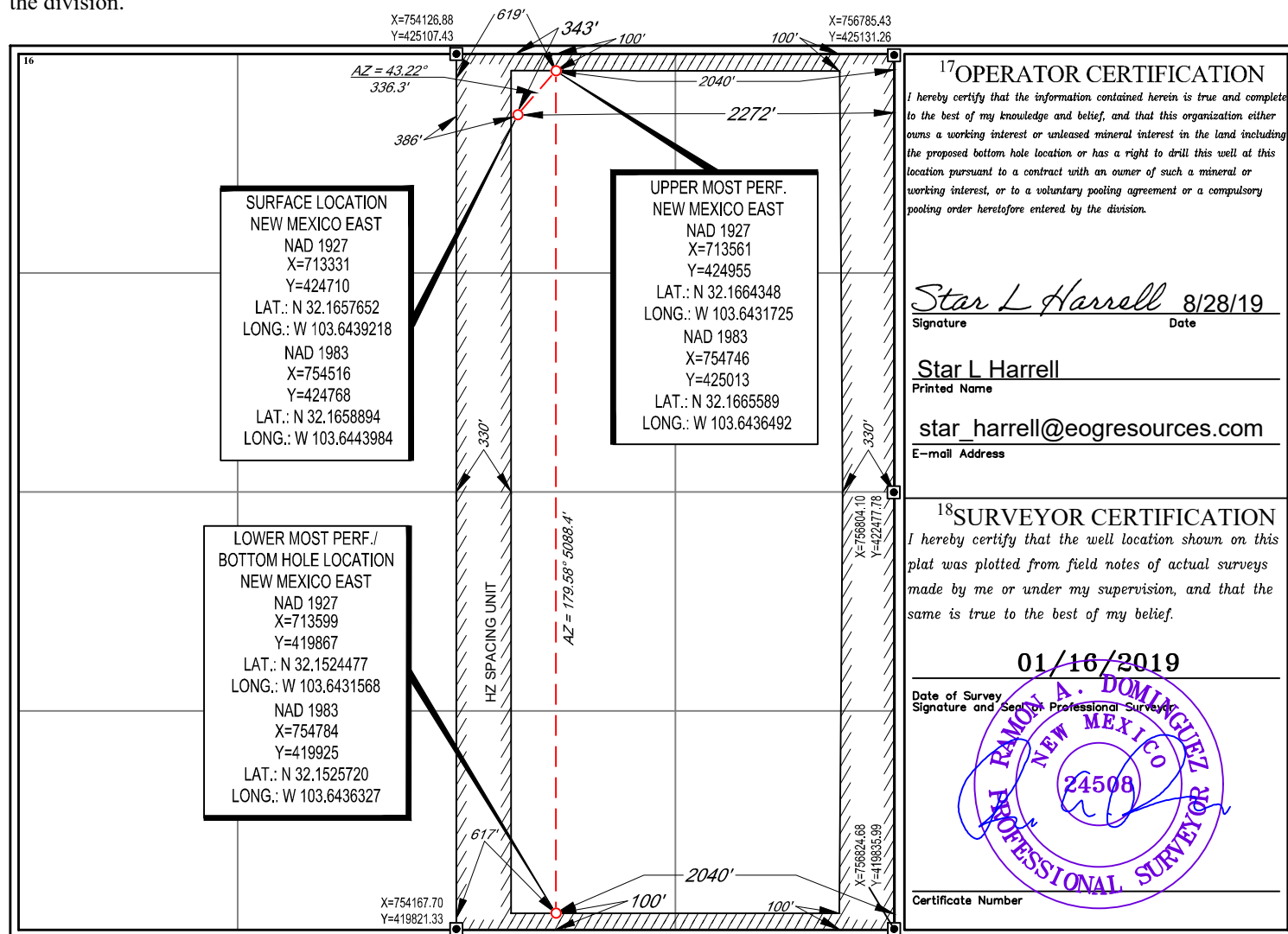
UL or lot no.	Section	Township	Range	Lot Idn	Feet from the	North/South line	Feet from the	East/West line	County
2	2	25-S	32-E	-	343'	NORTH	2272'	EAST	LEA

<sup>11</sup>Bottom Hole Location If Different From Surface

UL or lot no.	Section	Township	Range	Lot Idn	Feet from the	North/South line	Feet from the	East/West line	County
0	2	25-S	32-E	—	100'	SOUTH	2040'	EAST	LEA

<sup>12</sup> Dedicated Acres <b>320.67</b>	<sup>13</sup> Joint or Infill	<sup>14</sup> Consolidation Code	<sup>15</sup> Order No.
------------------------------------------------	-------------------------------	----------------------------------	-------------------------

No allowable will be assigned to this completion until all interests have been consolidated or a non-standard unit has been approved by the division.





**District I**  
1625 N. French Dr., Hobbs, NM 88240  
Phone: (575) 393-6161 Fax: (575) 393-0720

**District II**  
811 S. First St., Artesia, NM 88210  
Phone: (575) 748-1283 Fax: (575) 748-9720

**District III**  
1000 Rio Brazos Road, Aztec, NM 87410  
Phone: (505) 334-6178 Fax: (505) 334-6170

**District IV**  
1220 S. St. Francis Dr., Santa Fe, NM 87505  
Phone: (505) 476-3460 Fax: (505) 476-3462

State of New Mexico  
Energy, Minerals & Natural Resources  
Department  
OIL CONSERVATION DIVISION  
1220 South St. Francis Dr.  
Santa Fe, NM 87505

**FORM C-102**

Revised August 1, 2011

**Submit one copy to appropriate**

**District Office**

☐ **AMENDED REPORT**

## WELL LOCATION AND ACREAGE DEDICATION PLAT

<sup>1</sup> API Number 30-025- <b>46348</b>		<sup>2</sup> Pool Code 98180	<sup>3</sup> Pool Name WC-025 G-09 S253309A; Upper Wolfcamp	
<sup>4</sup> Property Code 321651	<sup>5</sup> Property Name SAVAGE 2 STATE COM			<sup>6</sup> Well Number #707H
<sup>7</sup> OGRID No. 7377	<sup>8</sup> Operator Name EOG RESOURCES, INC.			<sup>9</sup> Elevation 3543'

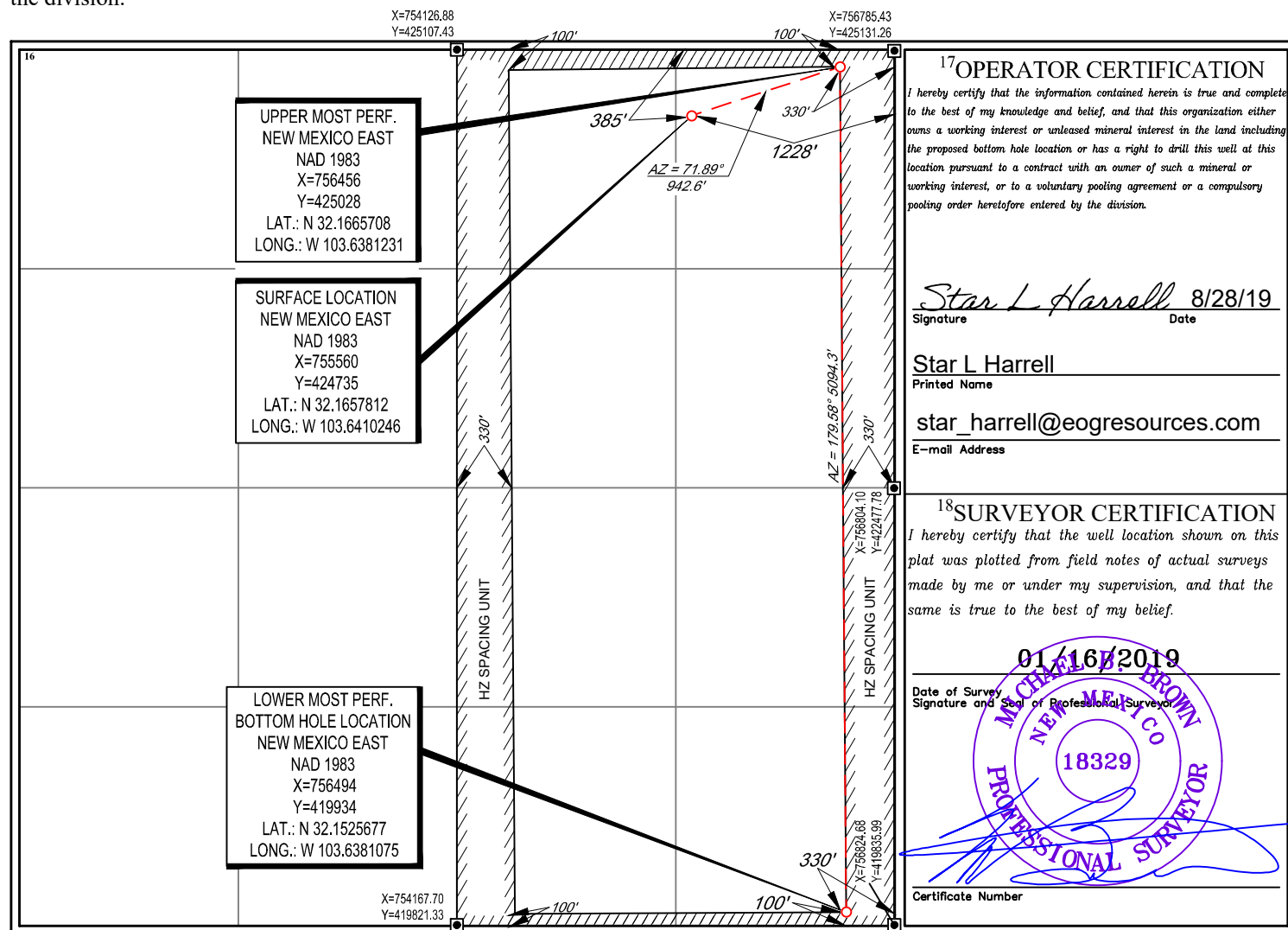
<sup>10</sup>Surface Location

UL or lot no.	Section	Township	Range	Lot Idn	Feet from the	North/South line	Feet from the	East/West line	County
1	2	25-S	32-E	-	385'	NORTH	1228'	EAST	LEA

UL or lot no.	Section	Township	Range	Lot Idn	Feet from the	North/South line	Feet from the	East/West line	County
P	2	25-S	32-E	—	100'	SOUTH	330'	EAST	LEA

<sup>12</sup> Dedicated Acres <b>322.76</b>	<sup>13</sup> Joint or Infill	<sup>14</sup> Consolidation Code	<sup>15</sup> Order No.
------------------------------------------------	-------------------------------	----------------------------------	-------------------------

No allowable will be assigned to this completion until all interests have been consolidated or a non-standard unit has been approved by the division.



District I  
1625 N. French Dr., Hobbs, NM 88240  
Phone: (575) 393-6161 Fax: (575) 393-0720  
District II  
811 S. First St., Artesia, NM 88210  
Phone: (575) 748-1283 Fax: (575) 748-9720  
District III  
1000 Rio Brazos Road, Aztec, NM 87410  
Phone: (505) 334-6178 Fax: (505) 334-6170  
District IV  
1220 S. St. Francis Dr., Santa Fe, NM 87505  
Phone: (505) 476-3460 Fax: (505) 476-3462

State of New Mexico  
Energy, Minerals & Natural Resources  
Department  
OIL CONSERVATION DIVISION  
1220 South St. Francis Dr.  
Santa Fe, NM 87505

FORM C-102

Revised August 1, 2011

Submit one copy to appropriate

District Office

☐ AMENDED REPORT

## WELL LOCATION AND ACREAGE DEDICATION PLAT

<sup>1</sup> API Number 30-025- 46337		<sup>2</sup> Pool Code 98180	<sup>3</sup> Pool Name WC-025 G-09 253309A; Upper Wolfcamp
<sup>4</sup> Property Code 321651	<sup>5</sup> Property Name SAVAGE 2 STATE COM		<sup>6</sup> Well Number 708H
<sup>7</sup> OGRID No. 7377	<sup>8</sup> Operator Name EOG RESOURCES, INC.		<sup>9</sup> Elevation 3535'

<sup>10</sup>Surface Location

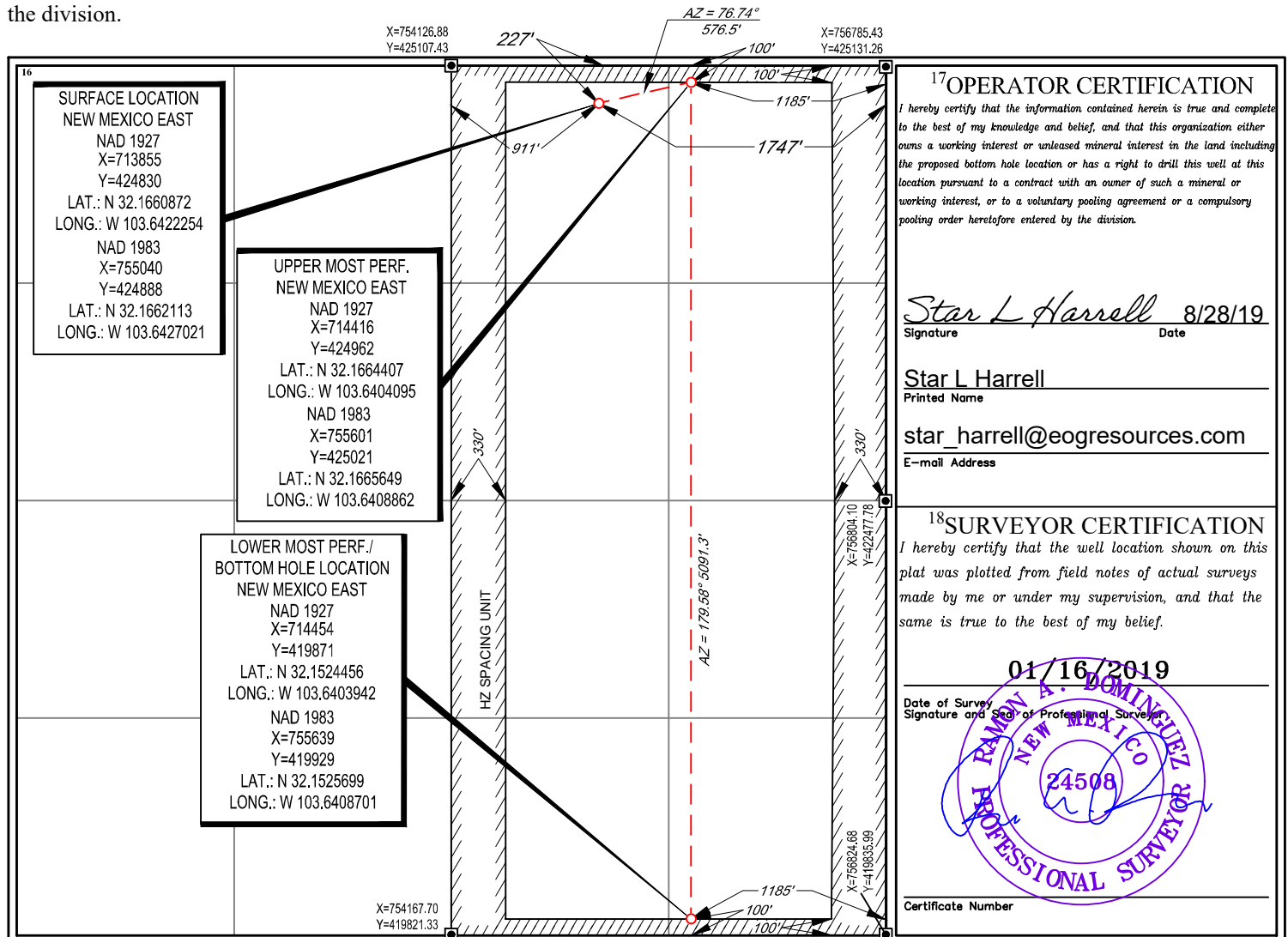
UL or lot no.	Section	Township	Range	Lot Idn	Feet from the	North/South line	Feet from the	East/West line	County
2	2	25-S	32-E	-	227'	NORTH	1747'	EAST	LEA

<sup>11</sup>Bottom Hole Location If Different From Surface

UL or lot no.	Section	Township	Range	Lot Idn	Feet from the	North/South line	Feet from the	East/West line	County
P	2	25-S	32-E	-	100'	SOUTH	1185'	EAST	LEA

<sup>12</sup> Dedicated Acres 320.67	<sup>13</sup> Joint or Infill	<sup>14</sup> Consolidation Code	<sup>15</sup> Order No.
-----------------------------------------	-------------------------------	----------------------------------	-------------------------

No allowable will be assigned to this completion until all interests have been consolidated or a non-standard unit has been approved by the division.



District I  
1625 N. French Dr., Hobbs, NM 88240  
Phone: (575) 393-6161 Fax: (575) 393-0720  
District II  
811 S. First St., Artesia, NM 88210  
Phone: (575) 748-1283 Fax: (575) 748-9720  
District III  
1000 Rio Brazos Road, Aztec, NM 87410  
Phone: (505) 334-6178 Fax: (505) 334-6170  
District IV  
1220 S. St. Francis Dr., Santa Fe, NM 87505  
Phone: (505) 476-3460 Fax: (505) 476-3462

State of New Mexico  
Energy, Minerals & Natural Resources  
Department  
OIL CONSERVATION DIVISION  
1220 South St. Francis Dr.  
Santa Fe, NM 87505

FORM C-102

Revised August 1, 2011

Submit one copy to appropriate

District Office

☐ AMENDED REPORT

## WELL LOCATION AND ACREAGE DEDICATION PLAT

<sup>1</sup> API Number 30-025-46338	<sup>2</sup> Pool Code 98180	<sup>3</sup> Pool Name WC-025 G-09 S253309A; Upper Wolfcamp
<sup>4</sup> Property Code 321651	<sup>5</sup> Property Name SAVAGE 2 STATE COM	<sup>6</sup> Well Number 721H
<sup>7</sup> OGRID No. 7377	<sup>8</sup> Operator Name EOG RESOURCES, INC.	<sup>9</sup> Elevation 3520'

<sup>10</sup>Surface Location

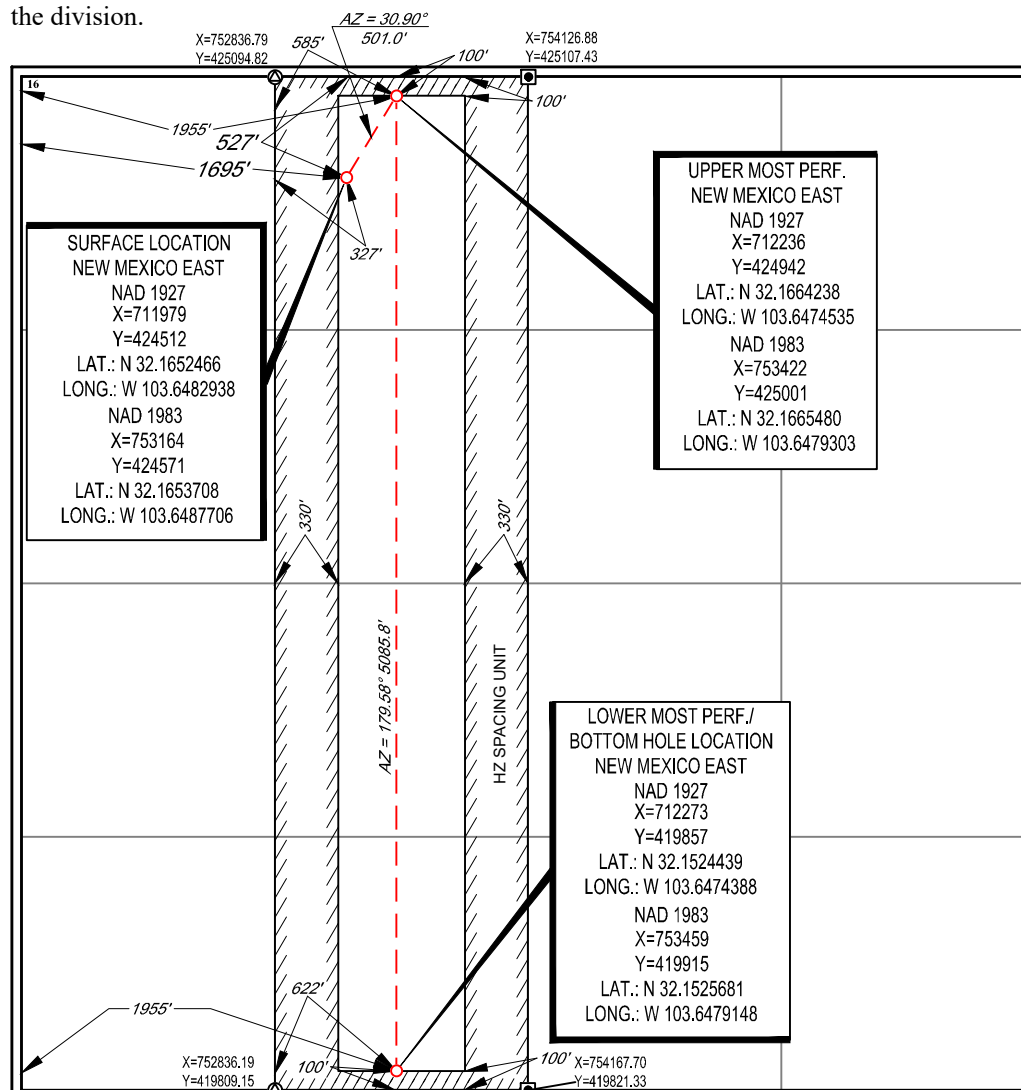
UL or lot no.	Section	Township	Range	Lot Idn	Feet from the	North/South line	Feet from the	East/West line	County
3	2	25-S	32-E	-	527'	NORTH	1695'	WEST	LEA

<sup>11</sup>Bottom Hole Location If Different From Surface

UL or lot no.	Section	Township	Range	Lot Idn	Feet from the	North/South line	Feet from the	East/West line	County
N	2	25-S	32-E	-	100'	SOUTH	1955'	WEST	LEA

<sup>12</sup> Dedicated Acres 160.19	<sup>13</sup> Joint or Infill	<sup>14</sup> Consolidation Code	<sup>15</sup> Order No.
-----------------------------------------	-------------------------------	----------------------------------	-------------------------

No allowable will be assigned to this completion until all interests have been consolidated or a non-standard unit has been approved by the division.

<sup>17</sup>OPERATOR CERTIFICATION

I hereby certify that the information contained herein is true and complete to the best of my knowledge and belief, and that this organization either owns a working interest or unleased mineral interest in the land including the proposed bottom hole location or has a right to drill this well at this location pursuant to a contract with an owner of such a mineral or working interest, or to a voluntary pooling agreement or a compulsory pooling order heretofore entered by the division.

Star L Harrell 8/28/19  
Signature Date

Star L Harrell  
Printed Name

star\_harrell@eogresources.com  
E-mail Address

<sup>18</sup>SURVEYOR CERTIFICATION

I hereby certify that the well location shown on this plat was plotted from field notes of actual surveys made by me or under my supervision, and that the same is true to the best of my belief.

01/16/2019

Date of Survey  
Signature and Seal of Professional Surveyor

RAMON A. DOMINGUEZ  
NEW MEXICO  
24508  
PROFESSIONAL SURVEYOR

Certificate Number

District I  
1625 N. French Dr., Hobbs, NM 88240  
Phone: (575) 393-6161 Fax: (575) 393-0720  
District II  
811 S. First St., Artesia, NM 88210  
Phone: (575) 748-1283 Fax: (575) 748-9720  
District III  
1000 Rio Brazos Road, Aztec, NM 87410  
Phone: (505) 334-6178 Fax: (505) 334-6170  
District IV  
1220 S. St. Francis Dr., Santa Fe, NM 87505  
Phone: (505) 476-3460 Fax: (505) 476-3462

State of New Mexico  
Energy, Minerals & Natural Resources  
Department  
OIL CONSERVATION DIVISION  
1220 South St. Francis Dr.  
Santa Fe, NM 87505

FORM C-102

Revised August 1, 2011

Submit one copy to appropriate

District Office

☐ AMENDED REPORT

## WELL LOCATION AND ACREAGE DEDICATION PLAT

<sup>1</sup> API Number 30-025-46339		<sup>2</sup> Pool Code 98180	<sup>3</sup> Pool Name WC-025 G-09 S253309A; Upper Wolfcamp
<sup>4</sup> Property Code 321651	<sup>5</sup> Property Name SAVAGE 2 STATE COM		<sup>6</sup> Well Number 722H
<sup>7</sup> OGRID No. 7377	<sup>8</sup> Operator Name EOG RESOURCES, INC.		<sup>9</sup> Elevation 3529'

<sup>10</sup>Surface Location

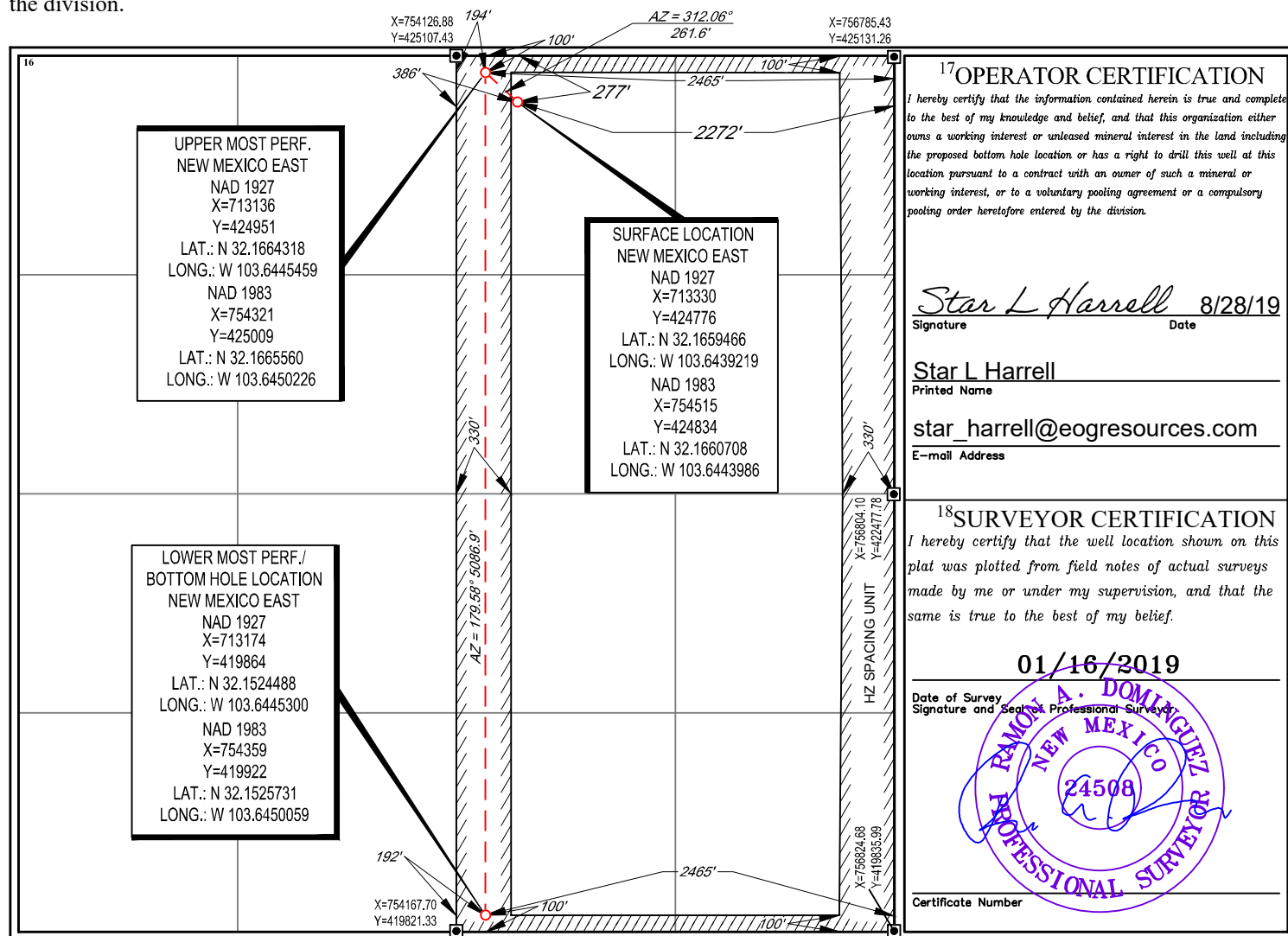
UL or lot no.	Section	Township	Range	Lot Idn	Feet from the	North/South line	Feet from the	East/West line	County
2	2	25-S	32-E	-	277'	NORTH	2272'	EAST	LEA

<sup>11</sup>Bottom Hole Location If Different From Surface

UL or lot no.	Section	Township	Range	Lot Idn	Feet from the	North/South line	Feet from the	East/West line	County
0	2	25-S	32-E	-	100'	SOUTH	2465'	EAST	LEA

<sup>12</sup> Dedicated Acres 322.76	<sup>13</sup> Joint or Infill	<sup>14</sup> Consolidation Code	<sup>15</sup> Order No.
-----------------------------------------	-------------------------------	----------------------------------	-------------------------

No allowable will be assigned to this completion until all interests have been consolidated or a non-standard unit has been approved by the division.



District I  
1625 N. French Dr., Hobbs, NM 88240  
Phone: (575) 393-6161 Fax: (575) 393-0720  
District II  
811 S. First St., Artesia, NM 88210  
Phone: (575) 748-1283 Fax: (575) 748-9720  
District III  
1000 Rio Brazos Road, Aztec, NM 87410  
Phone: (505) 334-6178 Fax: (505) 334-6170  
District IV  
1220 S. St. Francis Dr., Santa Fe, NM 87505  
Phone: (505) 476-3460 Fax: (505) 476-3462

State of New Mexico  
Energy, Minerals & Natural Resources  
Department  
OIL CONSERVATION DIVISION  
1220 South St. Francis Dr.  
Santa Fe, NM 87505

FORM C-102

Revised August 1, 2011

Submit one copy to appropriate

District Office

☐ AMENDED REPORT

## WELL LOCATION AND ACREAGE DEDICATION PLAT

<sup>1</sup> API Number 30-025- 46340		<sup>2</sup> Pool Code 98180		<sup>3</sup> Pool Name WC-025 G-09 S253309A; Upper Wolfcamp	
<sup>4</sup> Property Code 321651		<sup>5</sup> Property Name SAVAGE 2 STATE COM			<sup>6</sup> Well Number 723H
<sup>7</sup> OGRID No. 7377		<sup>8</sup> Operator Name EOG RESOURCES, INC.			<sup>9</sup> Elevation 3535'

<sup>10</sup>Surface Location

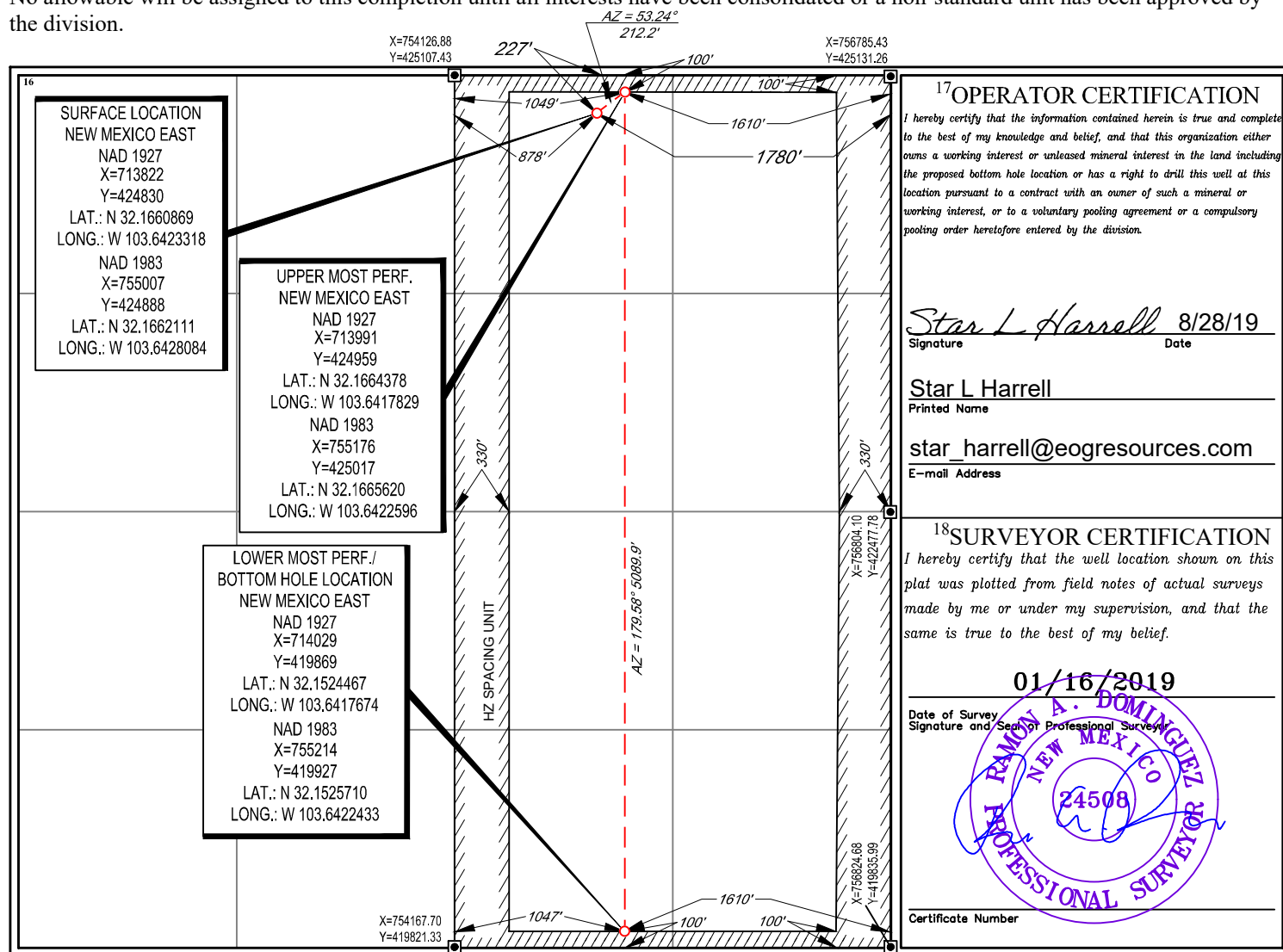
UL or lot no.	Section	Township	Range	Lot Idn	Feet from the	North/South line	Feet from the	East/West line	County
2	2	25-S	32-E	-	227'	NORTH	1780'	EAST	LEA

<sup>11</sup>Bottom Hole Location If Different From Surface

UL or lot no.	Section	Township	Range	Lot Idn	Feet from the	North/South line	Feet from the	East/West line	County
0	2	25-S	32-E	-	100'	SOUTH	1610'	EAST	LEA

<sup>12</sup> Dedicated Acres 320.67	<sup>13</sup> Joint or Infill	<sup>14</sup> Consolidation Code	<sup>15</sup> Order No.
-----------------------------------------	-------------------------------	----------------------------------	-------------------------

No allowable will be assigned to this completion until all interests have been consolidated or a non-standard unit has been approved by the division.





District I  
1625 N. French Dr., Hobbs, NM 88240  
Phone: (575) 393-6161 Fax: (575) 393-0720  
District II  
811 S. First St., Artesia, NM 88210  
Phone: (575) 748-1283 Fax: (575) 748-9720  
District III  
1000 Rio Brazos Road, Aztec, NM 87410  
Phone: (505) 334-6178 Fax: (505) 334-6170  
District IV  
1220 S. St. Francis Dr., Santa Fe, NM 87505  
Phone: (505) 476-3460 Fax: (505) 476-3462

State of New Mexico  
Energy, Minerals & Natural Resources  
Department  
OIL CONSERVATION DIVISION  
1220 South St. Francis Dr.  
Santa Fe, NM 87505

FORM C-102

Revised August 1, 2011

Submit one copy to appropriate

District Office

☐ AMENDED REPORT

## WELL LOCATION AND ACREAGE DEDICATION PLAT

<sup>1</sup> API Number 30-025- 46343	<sup>2</sup> Pool Code 98180	<sup>3</sup> Pool Name WC-025 G-09 S253309A; Upper Wolfcamp
<sup>4</sup> Property Code 321651	<sup>5</sup> Property Name SAVAGE 2 STATE COM	<sup>6</sup> Well Number 726H
<sup>7</sup> OGRID No. 7377	<sup>8</sup> Operator Name EOG RESOURCES, INC.	<sup>9</sup> Elevation 3544'

<sup>10</sup>Surface Location

UL or lot no.	Section	Township	Range	Lot Idn	Feet from the	North/South line	Feet from the	East/West line	County
1	2	25-S	32-E	-	358'	NORTH	1209'	EAST	LEA

<sup>11</sup>Bottom Hole Location If Different From Surface

UL or lot no.	Section	Township	Range	Lot Idn	Feet from the	North/South line	Feet from the	East/West line	County
P	2	25-S	32-E	-	100'	SOUTH	755'	EAST	LEA

<sup>12</sup> Dedicated Acres 320.67	<sup>13</sup> Joint or Infill	<sup>14</sup> Consolidation Code	<sup>15</sup> Order No.
-----------------------------------------	-------------------------------	----------------------------------	-------------------------

No allowable will be assigned to this completion until all interests have been consolidated or a non-standard unit has been approved by the division.

