

RECEIVED: 6/25/20	REVIEWER: DM	TYPE: OLM	APP NO: pDM2017851525
-------------------	--------------	-----------	-----------------------

ABOVE THIS TABLE FOR OCD DIVISION USE ONLY

**NEW MEXICO OIL CONSERVATION DIVISION**  
 - Geological & Engineering Bureau -  
 1220 South St. Francis Drive, Santa Fe, NM 87505

**ADMINISTRATIVE APPLICATION CHECKLIST**

THIS CHECKLIST IS MANDATORY FOR ALL ADMINISTRATIVE APPLICATIONS FOR EXCEPTIONS TO DIVISION RULES AND REGULATIONS WHICH REQUIRE PROCESSING AT THE DIVISION LEVEL IN SANTA FE

**Applicant:** COG Operating, LLC **OGRID Number:** 229137  
**Well Name:** Broadcaster 29 Federal 3H & 4H **API:** 30-025-41909 / 30-025-42954  
**Pool:** Antelope Ridge West; Bone Spring **Pool Code:** 2209

**SUBMIT ACCURATE AND COMPLETE INFORMATION REQUIRED TO PROCESS THE TYPE OF APPLICATION INDICATED BELOW**

**1) TYPE OF APPLICATION:** Check those which apply for [A]

A. Location - Spacing Unit - Simultaneous Dedication

☐ NSL☐ NSP (PROJECT AREA)☐ NSP (PRORATION UNIT)☐ SD

B. Check one only for [I] or [II]

[I] Commingling - Storage - Measurement

☐ DHC☒ CTB☐ PLC☐ PC☐ OLS☐ OLM

[II] Injection - Disposal - Pressure Increase - Enhanced Oil Recovery

☐ WFX☐ PMX☐ SWD☐ IPI☐ EOR☐ PPR**2) NOTIFICATION REQUIRED TO:** Check those which apply.A. ☐ Offset operators or lease holdersB. ☒ Royalty, overriding royalty owners, revenue ownersC. ☐ Application requires published noticeD. ☐ Notification and/or concurrent approval by SLOE. ☒ Notification and/or concurrent approval by BLMF. ☐ Surface ownerG. ☐ For all of the above, proof of notification or publication is attached, and/or,H. ☐ No notice required**FOR OCD ONLY**☐

Notice Complete

☐Application  
Content  
Complete

**3) CERTIFICATION:** I hereby certify that the information submitted with this application for administrative approval is **accurate** and **complete** to the best of my knowledge. I also understand that **no action** will be taken on this application until the required information and notifications are submitted to the Division.

**Note: Statement must be completed by an individual with managerial and/or supervisory capacity.**

Jeanette Barron

Print or Type Name

*Jeanette Barron*  
 Signature

Date

6/25/20

575-748-6974

Phone Number

jbarron@concho.com

e-mail Address



June 25, 2020

Attn: Dean McClure  
NM Oil Conservation Division  
1220 South Saint Francis Drive  
Santa Fe, New Mexico 87505

Re: Application for Administrative Approval of Lease Commingle (CTB)

Dear Mr. McClure,

COG Operating LLC respectfully requests approval for lease commingling for the following wells:

Broadcaster 29 Federal 3H  
API# 30-025-41909  
Antelope Ridge; Bone Spring West  
Ut. B, Sec. 29-T23S-R34E  
Lea County, NM

Broadcaster 29 Federal 4H  
API# 30-025-42954  
Antelope Ridge; Bone Spring West  
Ut. P, Sec. 20-T23S-R34E  
Lea County, NM

**Oil Production:**

The oil production from all wells will be measured separately by allocation meter prior to being commingled at the Central Tank Battery located in Ut. B, Sec. 29-T23S-R34E. In the event the CTB is over capacity or in the case of battery or pipeline repairs the oil production from these wells may be transported by truck to either the Red Hills Offload Station, located in Unit O, section 4-T26S-R32E, or the Jal Offload Station, located in Unit D, Section 4-T26S-R37E, Lea County. In this case, the oil will remain segregated and will be measured by lact meter when offloading at said stations.

**Gas Production:**

The gas production from all wells will be measured separately by allocation meter prior to being commingled and entering a gas flow line to the gas custody transfer meter at the Central Tank Battery located in Ut. B, Sec. 29-T23S-R34E. The Targa gas sales meter # 161987.

All owners of interest have been notified by certified mail that should they have an objection to this surface commingling, they must file a formal protest with the NMOCD within 20 days of the date of this application. Proof of owner notification is enclosed.

Please see the enclosed Administrative Application Checklist, C-107B Application for Surface Commingling, plats for referenced wells, site facility diagram, maps with lease boundaries showing wells and facility locations and prior six month's production.

**CORPORATE ADDRESS**

One Concho Center | 600 West Illinois Avenue | Midland, Texas 79701  
P 432.683.7443 | F 432.683.7441

**ARTESIA WEST OFFICE**

2208 Main Street | Artesia, New Mexico 88210  
P 575.748.6940 | F 575.746.2096



Thank you for your attention to this matter.

Sincerely,

A handwritten signature in black ink that reads "Jeanette Barron".

**Jeanette Barron**  
Regulatory Technician II

**CORPORATE ADDRESS**

One Concho Center | 600 West Illinois Avenue | Midland, Texas 79701  
**P** 432.683.7443 | **F** 432.683.7441

**ARTESIA WEST OFFICE**

2208 Main Street | Artesia, New Mexico 88210  
**P** 575.746.6940 | **F** 575.746.2096

District I  
1625 N. French Drive, Hobbs, NM 88240  
District II  
811 S. First St., Artesia, NM 88210  
District III  
1000 Rio Brazos Road, Aztec, NM 87410  
District IV  
1220 S. St Francis Dr, Santa Fe, NM  
87505

State of New Mexico  
Energy, Minerals and Natural Resources Department

Form C-107-B  
Revised August 1, 2011

**OIL CONSERVATION DIVISION**  
1220 S. St Francis Drive  
Santa Fe, New Mexico 87505

Submit the original  
application to the Santa Fe  
office with one copy to the  
appropriate District Office.

**APPLICATION FOR SURFACE COMMINGLING (DIVERSE OWNERSHIP)**

OPERATOR NAME: COG Operating LLC  
OPERATOR ADDRESS: 2208 W Main Street, Artesia, New Mexico 88210  
APPLICATION TYPE:

☐ Pool Commingling ☒ Lease Commingling ☐ Pool and Lease Commingling ☐ Off-Lease Storage and Measurement (Only if not Surface Commingled)

LEASE TYPE: ☐ Fee ☐ State ☒ Federal

Is this an Amendment to existing Order? ☐ Yes ☐ No If "Yes", please include the appropriate Order No. \_\_\_\_\_  
Have the Bureau of Land Management (BLM) and State Land office (SLO) been notified in writing of the proposed commingling  
☐ Yes ☐ No

**(A) POOL COMMINGLING**  
Please attach sheets with the following information

(1) Pool Names and Codes	Gravities / BTU of Non-Commingled Production	Calculated Gravities / BTU of Commingled Production		Calculated Value of Commingled Production	Volumes

- (2) Are any wells producing at top allowables? ☐ Yes ☐ No  
(3) Has all interest owners been notified by certified mail of the proposed commingling? ☐ Yes ☐ No.  
(4) Measurement type: ☐ Metering ☐ Other (Specify)  
(5) Will commingling decrease the value of production? ☐ Yes ☐ No If "yes", describe why commingling should be approved

**(B) LEASE COMMINGLING**  
Please attach sheets with the following information

- (1) Pool Name and Code. 2209 Antelope Ridge; Bone Spring West  
(2) Is all production from same source of supply? ☒ Yes ☐ No  
(3) Has all interest owners been notified by certified mail of the proposed commingling? ☒ Yes ☐ No  
(4) Measurement type: ☒ Metering ☐ Other (Specify)

**(C) POOL and LEASE COMMINGLING**  
Please attach sheets with the following information

- (1) Complete Sections A and E.

**(D) OFF-LEASE STORAGE and MEASUREMENT**  
Please attached sheets with the following information

- (1) Is all production from same source of supply? ☐ Yes ☐ No  
(2) Include proof of notice to all interest owners.

**(E) ADDITIONAL INFORMATION (for all application types)**  
Please attach sheets with the following information

- (1) A schematic diagram of facility, including legal location.  
(2) A plat with lease boundaries showing all well and facility locations. Include lease numbers if Federal or State lands are involved.  
(3) Lease Names, Lease and Well Numbers, and API Numbers.

I hereby certify that the information above is true and complete to the best of my knowledge and belief.

SIGNATURE: Jeanette Barron TITLE: Regulatory Technician II DATE: 6/25/20

TYPE OR PRINT NAME Jeanette Barron TELEPHONE NO.: 575.748.6974

E-MAIL ADDRESS: jbarron@concho.com

**District I**1625 N. French Dr., Hobbs, NM 88240  
Phone: (575) 393-6161 Fax: (575) 393-0720**District II**811 S. First St., Artesia, NM 88210  
Phone: (575) 748-1283 Fax: (575) 748-9720**District III**1000 Rio Brazos Road, Aztec, NM 87410  
Phone: (505) 334-6178 Fax: (505) 334-6170**District IV**1220 S. St. Francis Dr., Santa Fe, NM 87505  
Phone: (505) 476-3460 Fax: (505) 476-3462

State of New Mexico  
Energy, Minerals & Natural Resources Department  
**OIL CONSERVATION DIVISION**  
1220 South St. Francis Dr.  
Santa Fe, NM 87505

Form C-102

Revised August 1, 2011

Submit one copy to appropriate

District Office

☐ AMENDED REPORT**WELL LOCATION AND ACREAGE DEDICATION PLAT**

<sup>1</sup> API Number <b>30-025-41909</b>	<sup>2</sup> Pool Code <b>2209</b>	<sup>3</sup> Pool Name <b>Antelope Ridge, West: Bone Spring</b>
<sup>4</sup> Property Code <b>317331</b>	<sup>5</sup> Property Name <b>Broadcaster 29 Federal</b>	<sup>6</sup> Well Number <b>#3H</b>
<sup>7</sup> OGRID No. <b>229137</b>	<sup>8</sup> Operator Name <b>COG Operating LLC</b>	<sup>9</sup> Elevation <b>3525.0</b>

**<sup>10</sup> Surface Location**

UL or lot no.	Section	Township	Range	Lot Idn	Feet from the	North/South line	Feet from the	East/West line	County
<b>B</b>	<b>29</b>	<b>23S</b>	<b>34E</b>		<b>330</b>	<b>North</b>	<b>1980</b>	<b>East</b>	<b>Lea</b>

**<sup>11</sup> Bottom Hole Location If Different From Surface**

UL or lot no.	Section	Township	Range	Lot Idn	Feet from the	North/South line	Feet from the	East/West line	County
<b>O</b>	<b>29</b>	<b>23S</b>	<b>34E</b>		<b>309</b>	<b>South</b>	<b>1634</b>	<b>East</b>	<b>Lea</b>

<sup>12</sup> Dedicated Acres <b>160</b>	<sup>13</sup> Joint or Infill	<sup>14</sup> Consolidation Code	<sup>15</sup> Order No.
---	-------------------------------	----------------------------------	-------------------------

No allowable will be assigned to this completion until all interests have been consolidated or a non-standard unit has been approved by the division.

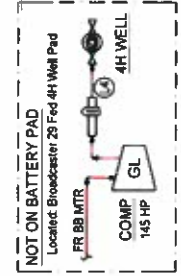
	<b><sup>17</sup> OPERATOR CERTIFICATION</b> I hereby certify that the information contained here in is true and complete to the best of my knowledge and belief, and that this organization either owns a working interest or unleased mineral interest in the land including the proposed bottom hole location or has a right to drill this well at this location pursuant to a contract with an owner of such a mineral or working interest, or to a voluntary pooling agreement or a compulsory pooling order hereinafter entered by the division. <i>Jeanette Barron</i> 6/25/20 Signature Date <b>Jeanette Barron</b> Printed Name <b>jbarron@concho.com</b> E-mail Address
	<b><sup>18</sup> SURVEYOR CERTIFICATION</b> I hereby certify that the well location shown on this plat was plotted from field notes of actual surveys made by me or under my supervision, and that the same is true and correct to the best of my belief. Date of Survey Signature and Seal of Professional Surveyor:
	<b>Refer to Original Plat</b> Certificate Number

Received by *OCD*: 6/25/2020 2:46:39 PM



**BROADCASTER 29 FEDERAL 3H BATTERY**  
NWNE SECTION 29, T23S, R34E, UNIT B  
COORDS: 32.282278, -103.490116  
LEA COUNTY, NM

**WELLS:**  
BROADCASTER 29 FEDERAL #003H: 30-025-41909  
BROADCASTER 29 FEDERAL #004H: 30-025-42954

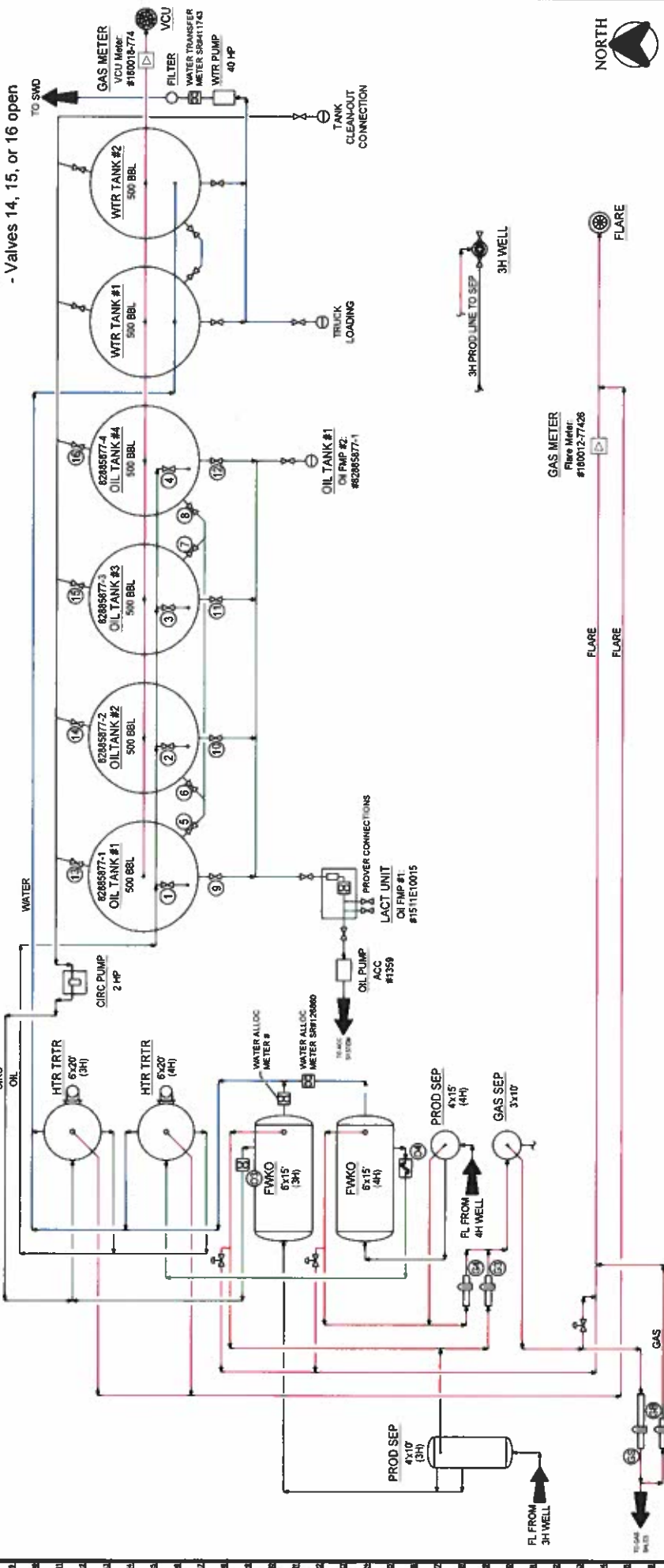


**GAS METERS**  
Targa Buy Back Meter:  
(GB): #161009  
#4H Gas Lift Meter  
(LJ): #3502238

**GAS ALLOC METERS**  
#3H Allocation Meter:  
(G3): #717002  
#4H Allocation Meters:  
GAS (G4): #717001  
OIL (O4): #14687448  
OIL (O3): #1627422

**Production Phase - Oil Tank #1**  
- Valve 1 open  
- Valves 2, 3, and 4 closed  
- Valves 5, 6, 7, and 8 open  
- Valves 9, 10, 11, and 12 closed  
- Valve 13 open  
- Valves 14, 15, and 16 closed

**Sales Phase - Oil Tank #1**  
- Valve 1 closed  
- Valves 2, 3, or 4 open  
- Valve 5 closed  
- Valves 6, 7, and 8 open  
- Valve 9 open  
- Valves 10, 11, and 12 closed  
- Valve 13 closed  
- Valves 14, 15, or 16 open

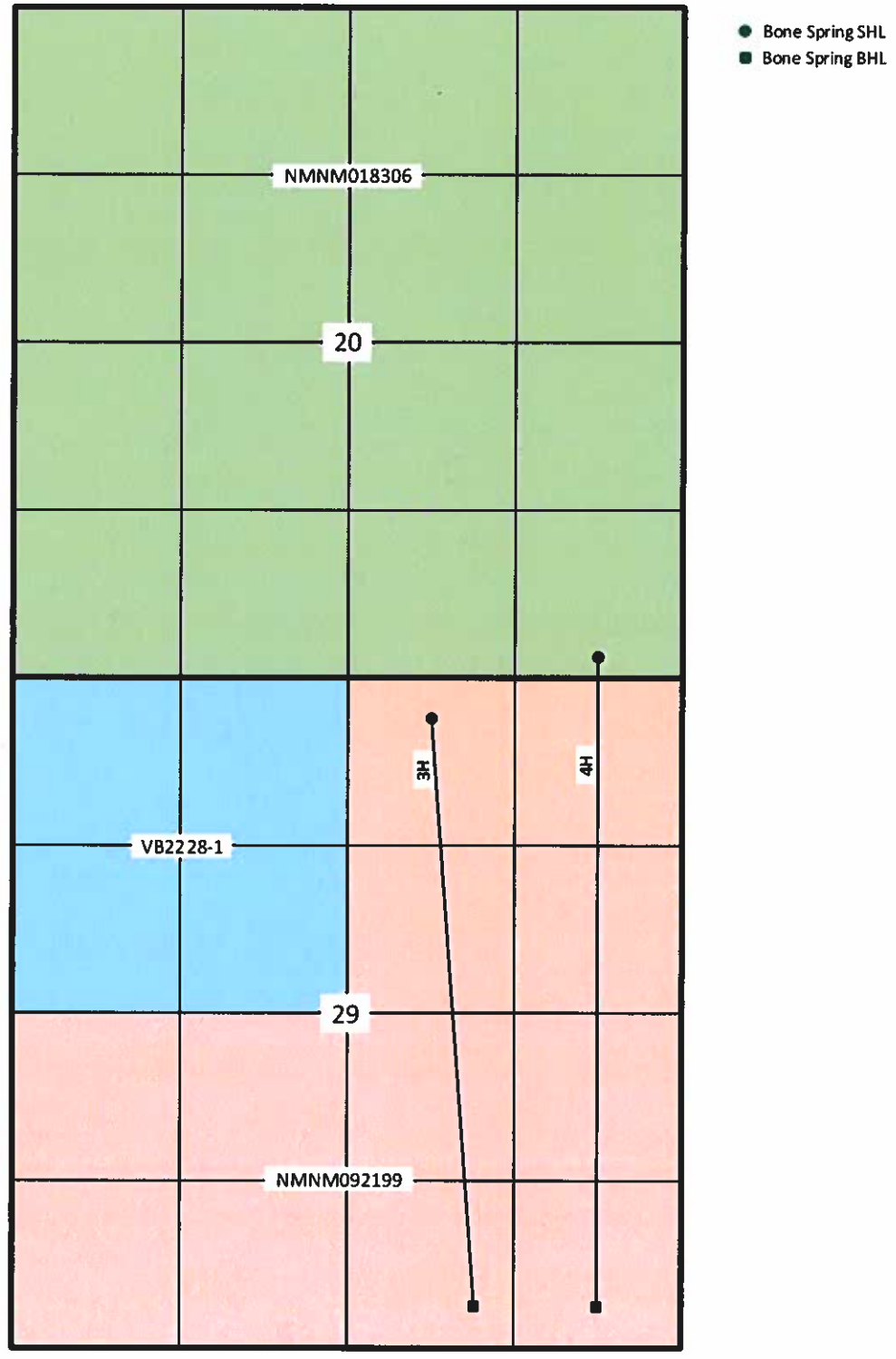


**Ledger for Site Diagram**  
Type of Lease: Federal  
Federal Lease SHL #: NMNM 092199  
Property Code: 317331  
OGRID #: 229137

CONFIDENTIALITY NOTICE		REFERENCE DRAWINGS		REVISIONS		EXISTING RECORD	
THIS DRAWING IS PROPERTY OF CONCHO OPERATING LLC AND IS LOANED TO THE USER FOR THE PROJECT ONLY. IT IS NOT TO BE REPRODUCED, COPIED, OR TRANSMITTED IN ANY FORM OR BY ANY MEANS, ELECTRONIC OR MECHANICAL, INCLUDING PHOTOCOPYING, RECORDING, OR BY ANY INFORMATION STORAGE AND RETRIEVAL SYSTEM. ANY UNAUTHORIZED REPRODUCTION OR USE OF THIS DRAWING IS PROHIBITED AND WILL BE PROSECUTED TO THE FULL EXTENT OF THE LAW.		NO.	TITLE	NO.	DATE	BY	DATE
CONCHO OPERATING LLC SITE SECURITY PLANS LOCATED AT: ONE CONCHO CENTER 500 WEST LAMAR AVENUE MIDLAND, TEXAS 79701	A	01/07/17	INITIAL FOR SITE POSITIONING	B	12/17/17	UPDATED BROADCASTER 29 FLD 3H ETP	01/07/17
	C	01/07/17	UPDATED WITH OIL AND GAS PUMPS	D	01/07/17	REVIEWED FOR FIELD CONNECTION	01/07/17
	E	01/07/17	REVIEWED FOR FIELD CONNECTION	F	01/07/17	REVIEWED FOR FIELD CONNECTION	01/07/17
	G	01/07/17	REVIEWED FOR FIELD CONNECTION	H	01/07/17	REVIEWED FOR FIELD CONNECTION	01/07/17
	I	01/07/17	REVIEWED FOR FIELD CONNECTION	J	01/07/17	REVIEWED FOR FIELD CONNECTION	01/07/17
	K	01/07/17	REVIEWED FOR FIELD CONNECTION	L	01/07/17	REVIEWED FOR FIELD CONNECTION	01/07/17
	M	01/07/17	REVIEWED FOR FIELD CONNECTION	N	01/07/17	REVIEWED FOR FIELD CONNECTION	01/07/17
C. REVISIONS		NO.	DATE	BY	DATE	BY	DATE
SCALE:		NO.	DATE	BY	DATE	BY	DATE
DRAWN BY:		NO.	DATE	BY	DATE	BY	DATE
CHECKED BY:		NO.	DATE	BY	DATE	BY	DATE
APPROVED BY:		NO.	DATE	BY	DATE	BY	DATE
DATE:		NO.	DATE	BY	DATE	BY	DATE
SCALE:		NO.	DATE	BY	DATE	BY	DATE
DRAWN BY:		NO.	DATE	BY	DATE	BY	DATE
CHECKED BY:		NO.	DATE	BY	DATE	BY	DATE
APPROVED BY:		NO.	DATE	BY	DATE	BY	DATE
DATE:		NO.	DATE	BY	DATE	BY	DATE
SCALE:		NO.	DATE	BY	DATE	BY	DATE
DRAWN BY:		NO.	DATE	BY	DATE	BY	DATE
CHECKED BY:		NO.	DATE	BY	DATE	BY	DATE
APPROVED BY:		NO.	DATE	BY	DATE	BY	DATE
DATE:		NO.	DATE	BY	DATE	BY	DATE
SCALE:		NO.	DATE	BY	DATE	BY	DATE
DRAWN BY:		NO.	DATE	BY	DATE	BY	DATE
CHECKED BY:		NO.	DATE	BY	DATE	BY	DATE
APPROVED BY:		NO.	DATE	BY	DATE	BY	DATE
DATE:		NO.	DATE	BY	DATE	BY	DATE
SCALE:		NO.	DATE	BY	DATE	BY	DATE
DRAWN BY:		NO.	DATE	BY	DATE	BY	DATE
CHECKED BY:		NO.	DATE	BY	DATE	BY	DATE
APPROVED BY:		NO.	DATE	BY	DATE	BY	DATE
DATE:		NO.	DATE	BY	DATE	BY	DATE
SCALE:		NO.	DATE	BY	DATE	BY	DATE
DRAWN BY:		NO.	DATE	BY	DATE	BY	DATE
CHECKED BY:		NO.	DATE	BY	DATE	BY	DATE
APPROVED BY:		NO.	DATE	BY	DATE	BY	DATE
DATE:		NO.	DATE	BY	DATE	BY	DATE
SCALE:		NO.	DATE	BY	DATE	BY	DATE
DRAWN BY:		NO.	DATE	BY	DATE	BY	DATE
CHECKED BY:		NO.	DATE	BY	DATE	BY	DATE
APPROVED BY:		NO.	DATE	BY	DATE	BY	DATE
DATE:		NO.	DATE	BY	DATE	BY	DATE
SCALE:		NO.	DATE	BY	DATE	BY	DATE
DRAWN BY:		NO.	DATE	BY	DATE	BY	DATE
CHECKED BY:		NO.	DATE	BY	DATE	BY	DATE
APPROVED BY:		NO.	DATE	BY	DATE	BY	DATE
DATE:		NO.	DATE	BY	DATE	BY	DATE
SCALE:		NO.	DATE	BY	DATE	BY	DATE
DRAWN BY:		NO.	DATE	BY	DATE	BY	DATE
CHECKED BY:		NO.	DATE	BY	DATE	BY	DATE
APPROVED BY:		NO.	DATE	BY	DATE	BY	DATE
DATE:		NO.	DATE	BY	DATE	BY	DATE
SCALE:		NO.	DATE	BY	DATE	BY	DATE
DRAWN BY:		NO.	DATE	BY	DATE	BY	DATE
CHECKED BY:		NO.	DATE	BY	DATE	BY	DATE
APPROVED BY:		NO.	DATE	BY	DATE	BY	DATE
DATE:		NO.	DATE	BY	DATE	BY	DATE
SCALE:		NO.	DATE	BY	DATE	BY	DATE
DRAWN BY:		NO.	DATE	BY	DATE	BY	DATE
CHECKED BY:		NO.	DATE	BY	DATE	BY	DATE
APPROVED BY:		NO.	DATE	BY	DATE	BY	DATE
DATE:		NO.	DATE	BY	DATE	BY	DATE
SCALE:		NO.	DATE	BY	DATE	BY	DATE
DRAWN BY:		NO.	DATE	BY	DATE	BY	DATE
CHECKED BY:		NO.	DATE	BY	DATE	BY	DATE
APPROVED BY:		NO.	DATE	BY	DATE	BY	DATE
DATE:		NO.	DATE	BY	DATE	BY	DATE
SCALE:		NO.	DATE	BY	DATE	BY	DATE
DRAWN BY:		NO.	DATE	BY	DATE	BY	DATE
CHECKED BY:		NO.	DATE	BY	DATE	BY	DATE
APPROVED BY:		NO.	DATE	BY	DATE	BY	DATE
DATE:		NO.	DATE	BY	DATE	BY	DATE
SCALE:		NO.	DATE	BY	DATE	BY	DATE
DRAWN BY:		NO.	DATE	BY	DATE	BY	DATE
CHECKED BY:		NO.	DATE	BY	DATE	BY	DATE
APPROVED BY:		NO.	DATE	BY	DATE	BY	DATE
DATE:		NO.	DATE	BY	DATE	BY	DATE
SCALE:		NO.	DATE	BY	DATE	BY	DATE
DRAWN BY:		NO.	DATE	BY	DATE	BY	DATE
CHECKED BY:		NO.	DATE	BY	DATE	BY	DATE
APPROVED BY:		NO.	DATE	BY	DATE	BY	DATE
DATE:		NO.	DATE	BY	DATE	BY	DATE
SCALE:		NO.	DATE	BY	DATE	BY	DATE
DRAWN BY:		NO.	DATE	BY	DATE	BY	DATE
CHECKED BY:		NO.	DATE	BY	DATE	BY	DATE
APPROVED BY:		NO.	DATE	BY	DATE	BY	DATE
DATE:		NO.	DATE	BY	DATE	BY	DATE
SCALE:		NO.	DATE	BY	DATE	BY	DATE
DRAWN BY:		NO.	DATE	BY	DATE	BY	DATE
CHECKED BY:		NO.	DATE	BY	DATE	BY	DATE
APPROVED BY:		NO.	DATE	BY	DATE	BY	DATE
DATE:		NO.	DATE	BY	DATE	BY	DATE
SCALE:		NO.	DATE	BY	DATE	BY	DATE
DRAWN BY:		NO.	DATE	BY	DATE	BY	DATE
CHECKED BY:		NO.	DATE	BY	DATE	BY	DATE
APPROVED BY:		NO.	DATE	BY	DATE	BY	DATE
DATE:		NO.	DATE	BY	DATE	BY	DATE
SCALE:		NO.	DATE	BY	DATE	BY	DATE
DRAWN BY:		NO.	DATE	BY	DATE	BY	DATE
CHECKED BY:		NO.	DATE	BY	DATE	BY	DATE
APPROVED BY:		NO.	DATE	BY	DATE	BY	DATE
DATE:		NO.	DATE	BY	DATE	BY	DATE
SCALE:		NO.	DATE	BY	DATE	BY	DATE
DRAWN BY:		NO.	DATE	BY	DATE	BY	DATE
CHECKED BY:		NO.	DATE	BY	DATE	BY	DATE
APPROVED BY:		NO.	DATE	BY	DATE	BY	DATE
DATE:		NO.	DATE	BY	DATE	BY	DATE
SCALE:		NO.	DATE	BY	DATE	BY	DATE
DRAWN BY:		NO.	DATE	BY	DATE	BY	DATE
CHECKED BY:		NO.	DATE	BY	DATE	BY	DATE
APPROVED BY:		NO.	DATE	BY	DATE	BY	DATE
DATE:		NO.	DATE	BY	DATE	BY	DATE
SCALE:		NO.	DATE	BY	DATE	BY	DATE
DRAWN BY:		NO.	DATE	BY	DATE	BY	DATE
CHECKED BY:		NO.	DATE	BY	DATE	BY	DATE
APPROVED BY:		NO.	DATE	BY	DATE	BY	DATE
DATE:		NO.	DATE	BY	DATE	BY	DATE
SCALE:		NO.	DATE	BY	DATE	BY	DATE
DRAWN BY:		NO.	DATE	BY	DATE	BY	DATE
CHECKED BY:		NO.	DATE	BY	DATE	BY	DATE
APPROVED BY:		NO.	DATE	BY	DATE	BY	DATE
DATE:		NO.	DATE	BY	DATE	BY	DATE
SCALE:		NO.	DATE	BY	DATE	BY	DATE
DRAWN BY:		NO.	DATE	BY	DATE	BY	DATE
CHECKED BY:		NO.	DATE	BY	DATE	BY	DATE
APPROVED BY:		NO.	DATE	BY	DATE	BY	DATE
DATE:		NO.	DATE	BY	DATE	BY	DATE
SCALE:		NO.	DATE	BY	DATE	BY	DATE
DRAWN BY:		NO.	DATE	BY	DATE	BY	DATE
CHECKED BY:		NO.	DATE	BY	DATE	BY	DATE
APPROVED BY:		NO.	DATE	BY	DATE	BY	DATE
DATE:		NO.	DATE	BY	DATE	BY	DATE
SCALE:		NO.	DATE	BY	DATE	BY	DATE
DRAWN BY:		NO.	DATE	BY	DATE	BY	DATE
CHECKED BY:		NO.	DATE	BY	DATE	BY	DATE
APPROVED BY:		NO.	DATE	BY	DATE	BY	DATE
DATE:		NO.	DATE	BY	DATE	BY	DATE
SCALE:		NO.	DATE	BY	DATE	BY	DATE
DRAWN BY:		NO.	DATE	BY	DATE	BY	DATE
CHECKED BY:		NO.	DATE	BY	DATE	BY	DATE
APPROVED BY:		NO.	DATE	BY	DATE	BY	DATE
DATE:		NO.	DATE	BY	DATE	BY	DATE
SCALE:		NO.	DATE	BY	DATE	BY	DATE
DRAWN BY:		NO.	DATE	BY	DATE	BY	DATE
CHECKED BY:		NO.	DATE	BY	DATE	BY	DATE
APPROVED BY:		NO.	DATE	BY	DATE	BY	DATE
DATE:		NO.	DATE	BY	DATE	BY	DATE
SCALE:		NO.	DATE	BY	DATE	BY	DATE
DRAWN BY:		NO.	DATE	BY	DATE	BY	DATE
CHECKED BY:		NO.	DATE	BY	DATE	BY	DATE
APPROVED BY:		NO.	DATE	BY	DATE	BY	DATE
DATE:		NO.	DATE	BY	DATE	BY	DATE
SCALE:		NO.	DATE	BY	DATE	BY	DATE
DRAWN BY:		NO.	DATE	BY	DATE	BY	DATE
CHECKED BY:		NO.	DATE	BY	DATE	BY	DATE
APPROVED BY:		NO.	DATE	BY	DATE	BY	DATE
DATE:		NO.	DATE	BY	DATE	BY	DATE
SCALE:		NO.	DATE	BY	DATE	BY	DATE
DRAWN BY:		NO.	DATE	BY	DATE	BY	DATE
CHECKED BY:		NO.	DATE	BY	DATE	BY	DATE
APPROVED BY:		NO.	DATE	BY	DATE	BY	DATE
DATE:		NO.	DATE	BY	DATE	BY	DATE
SCALE:		NO.	DATE	BY	DATE	BY	DATE
DRAWN BY:		NO.	DATE	BY	DATE	BY	DATE
CHECKED BY:		NO.	DATE	BY	DATE	BY	DATE
APPROVED BY:		NO.	DATE	BY	DATE	BY	DATE
DATE:		NO.	DATE	BY	DATE	BY	DATE
SCALE:		NO.	DATE	BY	DATE	BY	DATE
DRAWN BY:		NO.	DATE	BY	DATE	BY	DATE
CHECKED BY:		NO.	DATE	BY	DATE	BY	DATE
APPROVED BY:		NO.	DATE	BY	DATE	BY	DATE
DATE:		NO.	DATE	BY	DATE	BY	DATE
SCALE:		NO.	DATE	BY	DATE	BY	DATE
DRAWN BY:		NO.	DATE	BY	DATE	BY	DATE
CHECKED BY:		NO.	DATE	BY	DATE	BY	DATE
APPROVED BY:		NO.	DATE	BY	DATE	BY	DATE
DATE:		NO.	DATE	BY	DATE	BY	DATE
SCALE:		NO.	DATE	BY	DATE	BY	DATE
DRAWN BY:		NO.	DATE	BY	DATE	BY	DATE
CHECKED BY:		NO.	DATE	BY	DATE	BY	DATE
APPROVED BY:		NO.	DATE	BY	DATE	BY	DATE
DATE:		NO.	DATE	BY	DATE	BY	DATE
SCALE:		NO.	DATE	BY	DATE	BY	DATE
DRAWN BY:		NO.	DATE	BY	DATE	BY	DATE
CHECKED BY:		NO.	DATE	BY	DATE	BY	DATE
APPROVED BY:		NO.	DATE	BY	DATE	BY	DATE
DATE:		NO.	DATE	BY	DATE	BY	DATE
SCALE:		NO.	DATE	BY	DATE	BY	DATE
DRAWN BY:		NO.	DATE	BY	DATE	BY	DATE
CHECKED BY:		NO.	DATE	BY	DATE	BY	DATE
APPROVED BY:		NO.	DATE	BY	DATE	BY	DATE
DATE:		NO.	DATE	BY	DATE	BY	DATE
SCALE:		NO.	DATE	BY	DATE	BY	DATE
DRAWN BY:		NO.	DATE	BY	DATE	BY	DATE
CHECKED BY:		NO.	DATE	BY	DATE	BY	DATE
APPROVED BY:		NO.	DATE	BY	DATE	BY	DATE
DATE:		NO.	DATE	BY	DATE	BY	DATE
SCALE:		NO.	DATE	BY	DATE	BY	DATE
DRAWN BY:		NO.	DATE	BY	DATE	BY	DATE
CHECKED BY:		NO.	DATE	BY	DATE	BY	DATE
APPROVED BY:		NO.	DATE	BY	DATE	BY	DATE
DATE:		NO.	DATE	BY	DATE	BY	DATE
SCALE:		NO.	DATE	BY	DATE	BY	DATE
DRAWN BY:		NO.	DATE	BY	DATE	BY	DATE
CHECKED BY:		NO.	DATE	BY	DATE	BY	DATE
APPROVED BY:		NO.	DATE	BY	DATE	BY	DATE
DATE:		NO.	DATE	BY	DATE	BY	DATE
SCALE:		NO.	DATE	BY	DATE	BY	DATE
DRAWN BY:		NO.	DATE	BY	DATE	BY	DATE
CHECKED BY:		NO.	DATE	BY	DATE	BY	DATE
APPROVED BY:		NO.	DATE	BY	DATE	BY	DATE
DATE:		NO.	DATE	BY	DATE	BY	DATE
SCALE:		NO.	DATE	BY	DATE	BY	DATE
DRAWN BY:		NO.	DATE	BY	DATE	BY	DATE
CHECKED BY:		NO.	DATE	BY	DATE	BY	DATE
APPROVED BY:		NO.	DATE	BY	DATE	BY	DATE
DATE:		NO.	DATE	BY	DATE	BY	DATE
SCALE:		NO.	DATE	BY	DATE	BY	DATE
DRAWN BY:		NO.	DATE	BY	DATE	BY	DATE
CHECKED BY:		NO.	DATE	BY	DATE	BY	DATE
APPROVED BY:		NO.	DATE	BY	DATE	BY	DATE
DATE:		NO.	DATE	BY	DATE	BY	DATE
SCALE:		NO.	DATE	BY	DATE	BY	DATE
DRAWN BY:		NO.	DATE	BY	DATE	BY	DATE
CHECKED BY:		NO.	DATE	BY	DATE	BY	DATE
APPROVED BY:		NO.	DATE	BY	DATE	BY	DATE
DATE:		NO.	DATE	BY	DATE	BY	DATE
SCALE:		NO.	DATE	BY	DATE	BY	DATE
DRAWN BY:		NO.	DATE	BY	DATE	BY	DATE
CHECKED BY:		NO.	DATE	BY	DATE	BY	DATE
APPROVED BY:		NO.	DATE	BY	DATE	BY	DATE
DATE:		NO.	DATE	BY	DATE	BY	DATE
SCALE:		NO.	DATE	BY	DATE	BY	DATE
DRAWN BY:		NO.	DATE	BY	DATE	BY	DATE
CHECKED BY:		NO.	DATE	BY	DATE	BY	DATE
APPROVED BY:		NO.	DATE	BY			

DW-08/21/19

Broadcaster Federal Wells



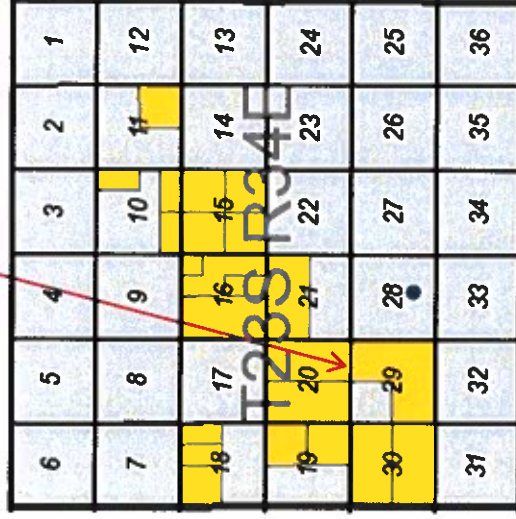
Sec. 20, 29-23S-R34E  
Lea County, NM



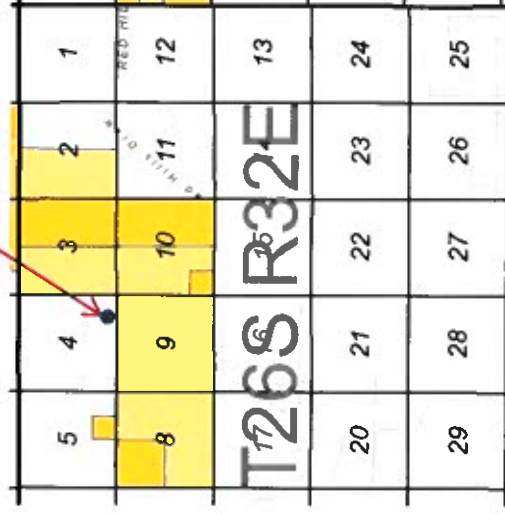


# Broadcaster 29 Fed 3H & 4H & Red Hills and Jal Offload Station Map

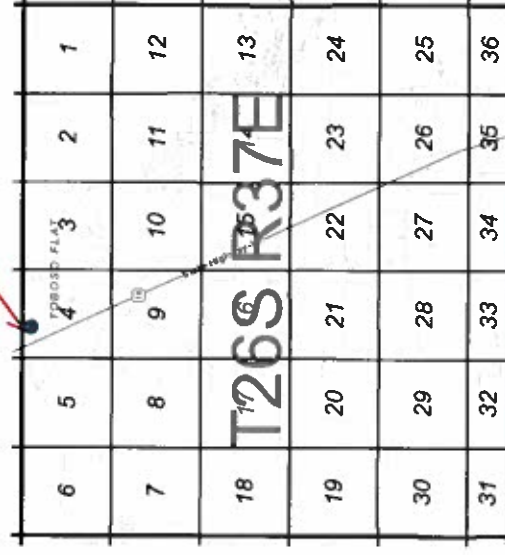
Broadcaster 29 Fed 3H & 4H  
Lea County, NM



Red Hills Offload Station  
Lea County, NM



Jal Offload Station  
Lea County, NM



Production Summary Report																	
API: 30-025-41909																	
BROADCASTER 29 FEDERAL #003H																	
Printed On: Tuesday, June 09 2020																	
		Production		Oil(BBLS)		Gas(MCF)		Water(BBLS)		Days P/I		Injection					
Year	Pool	Month												Co2(MCF)	Gas(MCF)	Other	Pressure
2019	[2209] ANTELOPE RIDGE;BONE SPRING, WEST	Oct			1605	6086		3788		31		0		0	0	0	0
2019	[2209] ANTELOPE RIDGE;BONE SPRING, WEST	Nov			1384	5416		3895		26		0		0	0	0	0
2019	[2209] ANTELOPE RIDGE;BONE SPRING, WEST	Dec			1868	4146		4962		31		0		0	0	0	0
2020	[2209] ANTELOPE RIDGE;BONE SPRING, WEST	Jan			2888	8397		7608		31		0		0	0	0	0
2020	[2209] ANTELOPE RIDGE;BONE SPRING, WEST	Feb			1652	4636		7482		29		0		0	0	0	0
2020	[2209] ANTELOPE RIDGE;BONE SPRING, WEST	Mar			1500	4320		5772		31		0		0	0	0	0

Production Summary Report															
API: 30-025-42954															
BROADCASTER 29 FEDERAL #004H															
Printed On: Tuesday, June 09 2020															
	Production														
Year	Pool	Month	Oil(BBLS)	Gas(MCF)	Water(BBLS)	Days P/I	Injection			Co2(MCF)	Gas(MCF)	Other	Pressure		
2019	[2209] ANTELOPE RIDGE;BONE SPRING, WEST	Oct	4631	8849	8651	31		Water(BBLS)	0	0	0	0			
2019	[2209] ANTELOPE RIDGE;BONE SPRING, WEST	Nov	4066	7922	7158	30			0	0	0	0			
2019	[2209] ANTELOPE RIDGE;BONE SPRING, WEST	Dec	2103	3425	2852	20			0	0	0	0			
2020	[2209] ANTELOPE RIDGE;BONE SPRING, WEST	Jan	2376	2537	4407	11			0	0	0	0			
2020	[2209] ANTELOPE RIDGE;BONE SPRING, WEST	Feb	6355	23677	14321	29			0	0	0	0			
2020	[2209] ANTELOPE RIDGE;BONE SPRING, WEST	Mar	4948	22324	11593	31			0	0	0	0			

# Broadcaster 29 Fed 3H, 4H CTB

Date Sent	Initials	Name	Address	City	State	ZipCode	Certified Return Receipt No.	Delivered
06.25.20	JB	BLUE OX PARTNERS LLC	1123 S. HURON ST UNIT V	DENVER	CO	80223	9414 8149 0246 9822 0867 93	
06.25.20	JB	DEVON ENERGY PRODUCTION CO LP	333 W. Sheridan Ave	Oklahoma City	OK	73102-5010	7019 2280 0001 1027 2026	
06.25.20	JB	OFFICE OF NATURAL RESOURCES REVENUE	Royalty Management ProgramP.O. Box 5760	Denver	CO	80217-5760	9414 8149 0246 9822 0868 16	
06.25.20	JB	CHEVRON USA INC	P O BOX 730436	Dallas	TX	75373-0436	9414 8149 0246 9822 0865 02	
06.25.20	JB	FIRST ROSWELL COMPANY	PO BOX 1797	ROSWELL	NM	88202-1797	9414 8149 0246 9822 0865 19	
06.25.20	JB	THOMAS E JENNINGS	PO BOX 1797	ROSWELL	NM	88202-1797	9414 8149 0246 9822 0868 23	
06.25.20	JB	PHILIP L WHITE	PO BOX 25968	ALBUQUERQUE	NM	87125	9414 8149 0246 9822 0868 30	
06.25.20	JB	CAZA PETROLEUM LLC	DBA CAZA OPERATING LLC200 N LORAIN STE 1550	MIDLAND	TX	79701	9414 8149 0246 9822 0865 26	
06.25.20	JB	BLM	414 West Taylor Street	Hobbs	NM	88240	7019 2280 0001 1027 2019	



Form 3160-5  
(June 2015)UNITED STATES  
DEPARTMENT OF THE INTERIOR  
BUREAU OF LAND MANAGEMENTFORM APPROVED  
OMB NO. 1004-0137  
Expires: January 31, 2018**SUNDRY NOTICES AND REPORTS ON WELLS**  
*Do not use this form for proposals to drill or to re-enter an abandoned well. Use form 3160-3 (APD) for such proposals.*5. Lease Serial No.  
NMNM92199

6. If Indian, Allottee or Tribe Name

**SUBMIT IN TRIPLICATE - Other instructions on page 2**

7. If Unit or CA/Agreement, Name and/or No.

1. Type of Well

☒ Oil Well ☐ Gas Well ☐ Other8. Well Name and No.  
BROADCASTER 29 FEDERAL 3H2. Name of Operator  
COG OPERATING LLCContact: JEANETTE BARRON  
E-Mail: JBARRON@CONCHO.COM9. API Well No.  
30-025-419093a. Address  
2208 W MAIN STREET  
ARTESIA, NM 882103b. Phone No. (include area code)  
Ph: 575-748-697410. Field and Pool or Exploratory Area  
ANTELOPE RIDGE BS WEST

4. Location of Well (Footage, Sec., T., R., M., or Survey Description)

11. County or Parish, State  
LEA COUNTY, NM**12. CHECK THE APPROPRIATE BOX(ES) TO INDICATE NATURE OF NOTICE, REPORT, OR OTHER DATA**

TYPE OF SUBMISSION	TYPE OF ACTION			
<input checked="" type="checkbox"/> Notice of Intent	<input type="checkbox"/> Acidize	<input type="checkbox"/> Deepen	<input type="checkbox"/> Production (Start/Resume)	<input type="checkbox"/> Water Shut-Off
<input type="checkbox"/> Subsequent Report	<input type="checkbox"/> Alter Casing	<input type="checkbox"/> Hydraulic Fracturing	<input type="checkbox"/> Reclamation	<input type="checkbox"/> Well Integrity
<input type="checkbox"/> Final Abandonment Notice	<input type="checkbox"/> Casing Repair	<input type="checkbox"/> New Construction	<input type="checkbox"/> Recomplete	<input checked="" type="checkbox"/> Other
	<input type="checkbox"/> Change Plans	<input type="checkbox"/> Plug and Abandon	<input type="checkbox"/> Temporarily Abandon	Production Facility Changes
	<input type="checkbox"/> Convert to Injection	<input type="checkbox"/> Plug Back	<input type="checkbox"/> Water Disposal	

13. Describe Proposed or Completed Operation: Clearly state all pertinent details, including estimated starting date of any proposed work and approximate duration thereof. If the proposal is to deepen directionally or recomple horizontally, give subsurface locations and measured and true vertical depths of all pertinent markers and zones. Attach the Bond under which the work will be performed or provide the Bond No. on file with BLM/BIA. Required subsequent reports must be filed within 30 days following completion of the involved operations. If the operation results in a multiple completion or recomple in a new interval, a Form 3160-4 must be filed once testing has been completed. Final Abandonment Notices must be filed only after all requirements, including reclamation, have been completed and the operator has determined that the site is ready for final inspection.

COG OPERATING LLC RESPECTFULLY REQUESTS DESIGNATION OF GAS FACILITY MEASUREMENT POINTS FOR BROADCASTER 29 FEDERAL 3H BATTERY.

THE GAS FACILITY MEASUREMENT POINT IS GAS SALES METER # 161987 MEETS API AND AGA STANDARDS AND WILL MEASURE AND BE CALIBRATED ACCORDING TO ALL FEDERAL REQUIREMENTS AND REGULATIONS.

BROADCASTER 29 FEDERAL 3H 30-025-41909  
BROADCASTER 29 FEDERAL 4H 30-025-42954

PLEASE SEE ATTACHED SITE FACILITY DIAGRAM

14. I hereby certify that the foregoing is true and correct.

**Electronic Submission #519969 verified by the BLM Well Information System  
For COG OPERATING LLC, sent to the Hobbs**

Name (Printed/Typed) JEANETTE BARRON

Title REGULATORY TECHNICIAN

Signature (Electronic Submission)

Date 06/23/2020

**THIS SPACE FOR FEDERAL OR STATE OFFICE USE**

Approved By

Title

Date

Conditions of approval, if any, are attached. Approval of this notice does not warrant or certify that the applicant holds legal or equitable title to those rights in the subject lease which would entitle the applicant to conduct operations thereon.

Office

Title 18 U.S.C. Section 1001 and Title 43 U.S.C. Section 1212, make it a crime for any person knowingly and willfully to make to any department or agency of the United States any false, fictitious or fraudulent statements or representations as to any matter within its jurisdiction.

(Instructions on page 2)

**\*\* OPERATOR-SUBMITTED \*\* OPERATOR-SUBMITTED \*\* OPERATOR-SUBMITTED \*\***

Form 3160-5  
(June 2015)UNITED STATES  
DEPARTMENT OF THE INTERIOR  
BUREAU OF LAND MANAGEMENTFORM APPROVED  
OMB NO. 1004-0137  
Expires: January 31, 2018**SUNDRY NOTICES AND REPORTS ON WELLS**  
*Do not use this form for proposals to drill or to re-enter an abandoned well. Use form 3160-3 (APD) for such proposals.*5. Lease Serial No.  
NMNM92199

6. If Indian, Allottee or Tribe Name

**SUBMIT IN TRIPLICATE - Other instructions on page 2**

7. If Unit or CA/Agreement, Name and/or No.

1. Type of Well

☒ Oil Well ☐ Gas Well ☐ Other8. Well Name and No.  
BROADCASTER 29 FEDERAL 3H2. Name of Operator  
COG OPERATING LLCContact: JEANETTE BARRON  
E-Mail: JBARRON@CONCHO.COM9. API Well No.  
30-025-419093a. Address  
2208 W MAIN STREET  
ARTESIA, NM 882103b. Phone No. (include area code)  
Ph: 575-748-697410. Field and Pool or Exploratory Area  
ANTELOPE RIDGE BS WEST

4. Location of Well (Footage, Sec., T., R., M., or Survey Description)

11. County or Parish, State  
LEA COUNTY, NM**12. CHECK THE APPROPRIATE BOX(ES) TO INDICATE NATURE OF NOTICE, REPORT, OR OTHER DATA**

TYPE OF SUBMISSION	TYPE OF ACTION			
<input checked="" type="checkbox"/> Notice of Intent	<input type="checkbox"/> Acidize	<input type="checkbox"/> Deepen	<input type="checkbox"/> Production (Start/Resume)	<input type="checkbox"/> Water Shut-Off
<input type="checkbox"/> Subsequent Report	<input type="checkbox"/> Alter Casing	<input type="checkbox"/> Hydraulic Fracturing	<input type="checkbox"/> Reclamation	<input type="checkbox"/> Well Integrity
<input type="checkbox"/> Final Abandonment Notice	<input type="checkbox"/> Casing Repair	<input type="checkbox"/> New Construction	<input type="checkbox"/> Recomplete	<input checked="" type="checkbox"/> Other
	<input type="checkbox"/> Change Plans	<input type="checkbox"/> Plug and Abandon	<input type="checkbox"/> Temporarily Abandon	Production Facility Changes
	<input type="checkbox"/> Convert to Injection	<input type="checkbox"/> Plug Back	<input type="checkbox"/> Water Disposal	

13. Describe Proposed or Completed Operation: Clearly state all pertinent details, including estimated starting date of any proposed work and approximate duration thereof. If the proposal is to deepen directionally or recomple horizontally, give subsurface locations and measured and true vertical depths of all pertinent markers and zones. Attach the Bond under which the work will be performed or provide the Bond No. on file with BLM/BIA. Required subsequent reports must be filed within 30 days following completion of the involved operations. If the operation results in a multiple completion or recomple in a new interval, a Form 3160-4 must be filed once testing has been completed. Final Abandonment Notices must be filed only after all requirements, including reclamation, have been completed and the operator has determined that the site is ready for final inspection.

COG OPERATING LLC RESPECTFULLY REQUESTS DESIGNATION OF GAS FACILITY MEASUREMENT POINTS FOR BROADCASTER 29 FEDERAL 3H BATTERY.

OIL FACILITY MEASUREMENT POINTS WILL BE #1 LACT #1511E10015 AND #2 TANK #82885877-1 AT THE BATTERY.

BROADCASTER 29 FEDERAL 3H 30-025-41909  
BROADCASTER 29 FEDERAL 4H 30-025-42954

PLEASE SEE ATTACHED SITE FACILITY DIAGRAM

14. I hereby certify that the foregoing is true and correct.

Electronic Submission #519967 verified by the BLM Well Information System  
For COG OPERATING LLC, sent to the Hobbs

Name (Printed/Typed) JEANETTE BARRON

Title REGULATORY TECHNICIAN

Signature (Electronic Submission)

Date 06/23/2020

**THIS SPACE FOR FEDERAL OR STATE OFFICE USE**

Approved By

Title

Date

Conditions of approval, if any, are attached. Approval of this notice does not warrant or certify that the applicant holds legal or equitable title to those rights in the subject lease which would entitle the applicant to conduct operations thereon.

Office

Title 18 U.S.C. Section 1001 and Title 43 U.S.C. Section 1212, make it a crime for any person knowingly and willfully to make to any department or agency of the United States any false, fictitious or fraudulent statements or representations as to any matter within its jurisdiction.

(Instructions on page 2)

**\*\* OPERATOR-SUBMITTED \*\* OPERATOR-SUBMITTED \*\* OPERATOR-SUBMITTED \*\***



## APPLICATION FOR SURFACE COMMINGLING AT CENTRAL TANK BATTERY

COG Operating LLC is requesting approval for surface commingling of production from the following wells:

### Federal Lease #NMNM092199; 12.5% Royalty Rate

Well Name	location	API#	Pool	Est Oil BOPD	Est Oil Gravity	Est Gas MCFPD	Est Gas BTU
Broadcaster 29 Fed 3H	Sec. 29, NENW T23S-R34E	30-025-41909	2209 Antelope Ridge; Bone Spring, West	58	44.4	155	1353

### Federal Lease #NMNM092199; 12.5% Royalty Rate

Well Name	Location	API#	Pool	Est Oil BOPD	Est Oil Gravity	Est Gas MCFPD	Est Gas BTU
Broadcaster 29 Fed 4H	Sec. 20, SESE T23-R34E	30-025 42954	2209 Antelope Ridge; Bone Spring, West	141	40.4	497	1267

### Oil and Gas Metering:

Production from the Broadcaster 29 Fed 3H & 4H each will enter into their own dedicated 3-phase inlet vessel. Oil from each vessel will be continuously measured with allocation meters. Gas will be continuously measured with allocation meters, as well.

After the oil from the two wells is individually measured, it will be commingled and sent to a heater treater and then vapor recovery tower. From the vapor recovery tower, the oil will enter the storage tanks and then be sold through a pipeline LACT FMP, temporary truck LACT FMP, or truck load line FMP.

After the gas from the two wells is individually measured it will be commingled and sent to the purchaser's sales meter, which will be the gas FMP. During normal operations a vapor recovery unit will pull flashing gas off the heater treater and VRT, this gas will be commingled and sent to the gas FMP.

### Flares

During normal operating conditions the high-pressure flare will be inactive. If the gas sales line pressure exceeds the facility design pressure then the commingled gas will be sent to the high-pressure flare, measured and burned. Gas that flashes off the oil and water tanks will be sent to the lower pressure flare, measured and burned. If power to the VRU is lost, then gas from the heater treater and VRT will be sent to the low-pressure flare, measured and burned.

### Gas lift Compression

The 4H will be utilizing gas lift for artificial lift. Commingled gas will be sent to the gas lift compressor where it will be compressed and measured with an allocation meter. The facility will have the capacity to buy gas back from the gas purchaser. This gas will be measured prior to entering the facility.

### Process and Flow Diagram:

The flow of production is shown in detail on the enclosed facility diagram. The commingling of this production is the most effective, economical means of producing the reserves and will not result in reduced royalty or improper measurement of production. The proposed commingling will reduce operating expenses as well as reduce the surface facility footprint and overall emissions.

COG Operating LLC understands the requested approval will not constitute the granting of any right-of-way or construction rights not granted by the lease instrument.

Respectfully,

A handwritten signature in black ink that reads "Jeanette Barron". The signature is written in a cursive, flowing style.

Jeanette Barron  
Regulatory Technician II

Date: 6/25/20



## Serial Register Page

Jun 01, 2020

01 12-22-1987;101STAT1330;30USC181 ET SE

Case Type: O&amp;g lse comp pd -1987

Serial Number: NMNM 092199

Commodity: Oil &amp; gas

Acres: 560.000

Disposition: Authorized

Lessee

Owner Name	Street	City	State	Zip	Net Acres	%Int
DEVON ENERGY PROD CO LP	333 W SHERIDAN AVE	OKLAHOMA CITY	OK	73102-5010	280.000	50.00
FIRST ROSWELL CO	PO BOX 1797	ROSWELL	NM	88202	280.000	50.00

Operating Rights

Owner Name	Street	City	State	Zip	Net Acres	%Int
CAZA PETROLEUM LLC	16945 NORTHCHASE DR STE 1430	HOUSTON	TX	77060-2133	0.000	0.00
CHEVRON USA INC	6301 DEAUVILLE	MIDLAND	TX	79706-2964	0.000	0.00
COG OPERATING LLC	600 W ILLINOIS AVE	MIDLAND	TX	79701-4882	0.000	0.00
DEVON ENERGY PROD CO LP	333 W SHERIDAN AVE	OKLAHOMA CITY	OK	73102-5010	0.000	0.00
ENDURANCE PROPERTIES INC	15455 DALLAS PKWY STE 1050	ADDISON	TX	75001-6721	0.000	0.00
LIME ROCK RESOURCES A LP	1111 BAGBY ST #4600	HOUSTON	TX	77002	0.000	0.00

Meridian: New Mex

State: NM

County: Lea

Township: 23 S

Range: 34 E

Admin Agency

Section: 4 S2NW;

BUREAU OF LAND MGMT

Section: 29 NE,S2;

BUREAU OF LAND MGMT

Code	Action	Date	Remarks
387	Case established	10/19/1993	9310104
191	Sale held	10/20/1993	
267	Bid received	10/20/1993	\$22960.00;
392	Monies received	10/20/1993	\$1120.00;
392	Monies received	11/3/1993	\$21840.00;
237	Lease issued	11/5/1993	
600	Records noted	11/15/1993	
111	Rental received	11/23/1993	\$840.00;21/MULTIPLE
963	Case microfilmed	11/29/1993	CNUM 570,073 JS

<u>Code</u>	<u>Action</u>	<u>Date</u>	<u>Remarks</u>
496	Fund code	12/1/1993	05;145003
530	Rlty rate - 12 1/2%	12/1/1993	
868	Effective date	12/1/1993	
111	Rental received	10/11/1994	\$840.00;21/0000000012
84	Rental received by mms	10/6/1995	\$840.00;21/0000000013
84	Rental received by mms	10/2/1996	\$840.00;21/0000000016
84	Rental received by mms	10/30/1997	\$840.00;21/0000000042
140	Asgn filed	7/16/1998	THE BLANCO CO/SF ENE
139	Asgn approved	7/30/1998	EFF 08/01/98;
140	Asgn filed	7/30/1998	BLANCO/FIRST ROSWELL
139	Asgn approved	8/11/1998	EFF 08/01/98;
84	Rental received by mms	11/5/1998	\$1120.00;21/0000000006
932	Trf oper rgts filed	11/12/1998	1ST ROSWEL/SF ENE RES
933	Trf oper rgts approved	12/16/1998	EFF 12/01/98;
246	Lease committed to ca	1/1/1999	NMNM103152;
940	Name change recognized	7/1/1999	SF ENE RES/SF SNYDER
940	Name change recognized	10/11/2000	SANTA FE/DEVON SFS
235	Extended	11/28/2002	THRU 11/28/2004;
522	Ca terminated	11/28/2002	NMNM103152;
817	Merger recognized	12/12/2002	DEVONSFS/DEVONENEPD
932	Trf oper rgts filed	5/27/2003	DEVON ENE/SOUTHWESTER
933	Trf oper rgts approved	6/27/2003	EFF 06/01/03;
246	Lease committed to ca	9/1/2003	NMNM111812;
650	Held by prod - actual	9/19/2003	/1/
658	Memo of 1st prod-actual	9/19/2003	/1/NMNM111812;#1
932	Trf oper rgts filed	4/20/2004	DEVON/CHESAPEAKE EXPL
933	Trf oper rgts approved	7/20/2004	EFF 05/01/04;
643	Production determination	11/18/2004	/1/
817	Merger recognized	6/11/2008	CHESA LLC/CHESA LP
817	Merger recognized	8/22/2008	CHESA EXP LP/EXP LLC
932	Trf oper rgts filed	9/19/2008	SOUTHWEST/LIME ROCK;1
933	Trf oper rgts approved	11/5/2008	EFF 10/01/08;
974	Automated record verif	11/5/2008	MV
932	Trf oper rgts filed	10/27/2010	LIME ROCK/DEVON ENE;1
933	Trf oper rgts approved	1/25/2011	EFF 11/01/10;
974	Automated record verif	1/25/2011	RAYO/RAYO
932	Trf oper rgts filed	11/27/2012	CHESAPEAK/CHEVRON U;1
933	Trf oper rgts approved	3/11/2013	EFF 12/01/12;
974	Automated record verif	3/11/2013	LBO

<u>Code</u>	<u>Action</u>	<u>Date</u>	<u>Remarks</u>
246	Lease committed to ca	8/30/2013	NMNM131909;
932	Trf oper rgts filed	9/17/2013	FIRST ROS/ENDURANCE;1
933	Trf oper rgts approved	11/12/2013	EFF 10/01/13;
974	Automated record verif	11/12/2013	LBO
643	Production determination	1/30/2014	/2/
660	Memo of 1st prod-alloc	1/30/2014	/2/NMNM131909;
246	Lease committed to ca	2/10/2014	NMNM133198;
932	Trf oper rgts filed	6/3/2014	FIRST ROS/DEVON ENE;1
658	Memo of 1st prod-actual	7/6/2014	/3/NMNM133198;#29
932	Trf oper rgts filed	8/25/2014	DEVON ENE/CAZA PETR;1
932	Trf oper rgts filed	8/25/2014	DEVON ENE/CAZA PETR;2
932	Trf oper rgts filed	8/25/2014	DEVON ENE/CAZA PETR;3
643	Production determination	8/27/2014	/3/
933	Trf oper rgts approved	9/12/2014	EFF 09/01/14;1
933	Trf oper rgts approved	9/12/2014	EFF 09/01/14;2
933	Trf oper rgts approved	9/12/2014	EFF 09/01/14;3
974	Automated record verif	9/12/2014	LBO
932	Trf oper rgts filed	10/17/2014	DEVON ENE/CAZA PETR;1
933	Trf oper rgts approved	11/5/2014	EFF 11/01/14;
974	Automated record verif	11/5/2014	LBO
899	Trf of orr filed	12/16/2014	1
558	Trf oper rgts ret unappv	12/31/2014	06/03/14;
974	Automated record verif	12/31/2014	JS
899	Trf of orr filed	3/24/2015	1
899	Trf of orr filed	6/9/2015	1
899	Trf of orr filed	6/24/2015	1
932	Trf oper rgts filed	7/16/2015	DEVON ENE/CAZA PETR;1
933	Trf oper rgts approved	9/24/2015	EFF 08/01/15;
974	Automated record verif	9/24/2015	MJD
932	Trf oper rgts filed	3/24/2017	ENDURANCE/COG OPERA;1
933	Trf oper rgts approved	4/10/2017	EFF 04/01/17;
974	Automated record verif	4/10/2017	RCC
246	Lease committed to ca	5/1/2017	NMNM 138430;
932	Trf oper rgts filed	1/4/2018	DEVON ENE/CAZA PETR;1
933	Trf oper rgts approved	2/8/2018	EFF 02/01/2018
974	Automated record verif	2/8/2018	RCC
658	Memo of 1st prod-actual	3/29/2018	/4/NMNM138430;#1H
246	Lease committed to ca	6/1/2018	NMNM 139078;
643	Production determination	10/1/2018	/4/

<u>Code</u>	<u>Action</u>	<u>Date</u>	<u>Remarks</u>
658	Memo of 1st prod-actual	4/5/2019	/5/NMNM139078;#38H
643	Production determination	6/18/2019	/5/

---

**Remarks**

BONDED OPERATORS/LESSEES/TRANSFEREES:

01/25/2011 - DEVON - CO1104 NW

11/05/2014 - ENDURANCE RES LLC NM/SW NMB000640;

09/24/2015 - ENDURANCE RESOURCES LLC NM/SW NMB001220

04/10/17 - BONDED TRANSFEREE COG NMB 000215 SW



**Atchafalaya Measurement, Inc.**  
 416 East Main Street Artesia, NM 88210      575-746-3481

**Inficon Micro GC Fusion F08904 R03RR2**

Sample Information	
Sample Name	COG__Broadcaster 29 Federal 4H__GC1-112119-05
Station Number	7170001
Lease Name	Broadcaster 29 Federal 4H
Analysis For	COG Operating
Producer	COG Operating
Field Name	Basin
County/State	Lea,NM
Frequency/Spot Sample	Quarterly
Sampling Method	Fill Empty
Sample Deg F	79
Atmos Deg F	60
Flow Rate	237
Line PSIG	75
Date/Time Sampled	11-14-19
Cylinder Number	N/A
Cylinder Clean Date	N/A
Sampled By	Mike West
Analysis By	Pat Silvas
Verified/Calibration Date	11-18-19
Report Date	2019-11-21 08:06:23

**Component Results**

Component Name	Ret. Time	Peak Area	Norm%	PPMV	GPM (Dry) (Gal. / 1000 cu.ft.)
Nitrogen	22.960	10828.0	2.10706	21070.600	0.000
H2S	46.000	0.0	0.00148	14.800	0.000
Methane	23.760	302315.5	75.64493	756449.300	0.000
Carbon Dioxide	28.060	1215.4	0.19818	1981.800	0.000
Ethane	37.360	82308.9	12.31612	123161.200	3.305
Propane	78.660	55660.6	6.20462	62046.200	1.715
i-butane	28.840	48009.8	0.69575	6957.500	0.228
n-Butane	30.420	128809.6	1.79855	17985.500	0.569
i-pentane	35.520	29396.5	0.34821	3482.100	0.128
n-Pentane	37.600	32332.2	0.37279	3727.900	0.136
Hexanes Plus	120.000	27637.0	0.31231	3123.100	0.136
Total:			100.00000	1000000.000	6.217

**Results Summary**

Result	Dry	Sat. (Base)
Total Raw Mole% (Dry)	101.14684	
Pressure Base (psia)	14.730	
Temperature Base	60.00	
Gross Heating Value (BTU / Ideal cu.ft.)	1267.2	1245.2
Gross Heating Value (BTU / Real cu.ft.)	1271.9	1250.3
Relative Density (G), Ideal	0.7428	0.7407
Relative Density (G), Real	0.7452	0.7434
Compressibility (Z) Factor	0.9963	0.9959

**Atchafalaya Measurement, Inc.**  
 416 East Main Street Artesia, NM 88210 575-746-3481

**Inficon Micro GC Fusion F08904 R03RR2**

Sample Information	
Sample Name	COG__Broadcaster 29 Federal 3H__GC2-3119-22
Station Number	717002
Lease Name	Broadcaster 29 Federal 3H
Analysis For	COG Operating
Producer	COG Operating
Field Name	Basin
County/State	Lea,NM
Frequency/Spot Sample	Quarterly
Sampling Method	Fill Empty
Sample Deg F	61
Atmos Deg F	N/A
Flow Rate	667
Line PSIG	71
Date/Time Sampled	2-26-19
Cylinder Number	N/A
Cylinder Clean Date	N/A
Sampled By	Jesus Escobedo
Analysis By	Pat Silvas
Verified/Calibration Date	2-25-19
Report Date	2019-03-01 11:48:45

**Component Results**

Component Name	Ret. Time	Peak Area	Norm%	PPMV	GPM (Dry) (Gal. / 1000 cu.ft.)
Nitrogen	22.880	18468.8	1.39058	13905.800	0.000
H2S	0.000	0.0	0.00025	2.500	0.000
Methane	23.680	743142.2	73.06060	730606.000	0.000
Carbon Dioxide	27.620	2974.4	0.18957	1895.700	0.000
Ethane	37.020	207284.1	12.37494	123749.400	3.323
Propane	77.420	155878.3	7.06757	70675.700	1.955
i-butane	28.560	77687.0	1.02312	10231.200	0.336
n-Butane	29.980	239138.8	3.01539	30153.900	0.955
i-pentane	34.600	48746.1	0.51390	5139.000	0.189
n-Pentane	36.320	54435.4	0.55513	5551.300	0.202
Hexanes Plus	120.000	86492.0	0.80895	8089.500	0.352
Total:			100.00000	1000000.000	7.312

**Results Summary**

Result	Dry	Sat. (Base)
Total Raw Mole% (Dry)	100.20458	
Pressure Base (psia)	14.730	
Temperature Base	60.00	
Gross Heating Value (BTU / Ideal cu.ft.)	1353.8	1330.2
Gross Heating Value (BTU / Real cu.ft.)	1359.7	1336.6
Relative Density (G), Ideal	0.7908	0.7879
Relative Density (G), Real	0.7939	0.7913
Compressibility (Z) Factor	0.9957	0.9952