

9BAM6-200810-C-107B PLC-697

Revised March 23, 2017

RECEIVED: 8/10/20	REVIEWER: DM	TYPE: PLC	APP NO: pDM2022660127
-------------------	--------------	-----------	-----------------------

ABOVE THIS TABLE FOR OCD DIVISION USE ONLY

NEW MEXICO OIL CONSERVATION DIVISION
 - Geological & Engineering Bureau -
 1220 South St. Francis Drive, Santa Fe, NM 87505

**ADMINISTRATIVE APPLICATION CHECKLIST**

THIS CHECKLIST IS MANDATORY FOR ALL ADMINISTRATIVE APPLICATIONS FOR EXCEPTIONS TO DIVISION RULES AND REGULATIONS WHICH REQUIRE PROCESSING AT THE DIVISION LEVEL IN SANTA FE

Applicant: Matador Production Company**OGRID Number:** 228937**Well Name:** Ray State Com 113H well**API:** 30-015-47098**Pool:** (1) Culebra Bluff; Bone Spring, South**Pool Code:** 15011

SUBMIT ACCURATE AND COMPLETE INFORMATION REQUIRED TO PROCESS THE TYPE OF APPLICATION INDICATED BELOW

1) TYPE OF APPLICATION: Check those which apply for [A]

A. Location – Spacing Unit – Simultaneous Dedication

☐ NSL☐ NSP (PROJECT AREA)☐ NSP (PRORATION UNIT)☐ SD

B. Check one only for [I] or [II]

[I] Commingling – Storage – Measurement

☐ DHC☐ CTB☒ PLC☐ PC☐ OLS☐ OLM

[II] Injection – Disposal – Pressure Increase – Enhanced Oil Recovery

☐ WFX☐ PMX☐ SWD☐ IPI☐ EOR☐ PPR**2) NOTIFICATION REQUIRED TO:** Check those which apply.A. ☐ Offset operators or lease holdersB. ☒ Royalty, overriding royalty owners, revenue ownersC. ☐ Application requires published noticeD. ☒ Notification and/or concurrent approval by SLOE. ☐ Notification and/or concurrent approval by BLMF. ☐ Surface ownerG. ☒ For all of the above, proof of notification or publication is attached, and/or,H. ☐ No notice required**FOR OCD ONLY**☐

Notice Complete

☐Application
Content
Complete

- 3) CERTIFICATION:** I hereby certify that the information submitted with this application for administrative approval is **accurate** and **complete** to the best of my knowledge. I also understand that **no action** will be taken on this application until the required information and notifications are submitted to the Division.

Note: Statement must be completed by an individual with managerial and/or supervisory capacity.

Kaitlyn A. Luck

Print or Type Name

Signature

08/10/20

Date

505-954-7286

Phone Number

kaluck@hollandhart.com

e-mail Address



Kaitlyn A. Luck
Phone (505) 954-7286
kaluck@hollandhart.com

August 10, 2020

VIA ONLINE FILING

Adrienne Sandoval
Director, Oil Conservation Division
New Mexico Department of Energy,
Minerals and Natural Resources
1220 South Saint Francis Drive
Santa Fe, New Mexico 87505

Re: Application of Matador Production Company to authorize pool and lease commingling, off-lease storage, off lease measurement, and off-lease marketing at the Ray State Slot 3 Tank Battery located in the SW/4 SW/4 (Unit M) of Section 36, Township 23 South, Range 28 East, NMPM, Eddy County, New Mexico.

Dear Ms. Sandoval:

Pursuant to 19.15.12.7 NMAC, individual spacing units are considered separate "leases" for surface commingling purposes. Accordingly, Matador Production Company (OGRID No. 228937) seeks administrative approval for pool and lease commingling, off-lease storage, off-lease measurement, and off-lease marketing at the **Ray State Slot 3 Tank Battery** of production from the Culebra Bluff; Bone Spring, South (15011); and the Purple Sage; Wolfcamp (98220) pools from *all existing and future wells drilled in the following "leases"/spacing units:*

(a) The 320-acre, more or less, spacing unit in the Culebra Bluff; Bone Spring, South (15011) underlying the W/2 E/2 of Sections 25 and 36. The spacing unit is currently dedicated to the **Ray State Com #113H well** (API No. 30-015-47098), and the **Ray State Com #123H well** (API No. 30-015-46667);

(b) The 640-acre, more or less, spacing unit in the Purple Sage; Wolfcamp Pool (98220) underlying the E/2 of Sections 25 and 36. The spacing unit is currently dedicated to the **Ray State Com #203H well** (API No. 30-015-46475), and the **Ray State Com #223H well** (API No. 30-015-46476); and

(c) Pursuant to 19.15.12.10.C(4)(g), *future spacing units connected to this central tank battery* with notice provided only to the interest owners within these future "leases"/spacing units.

Oil and gas production from these “leases”/spacing units will be commingled and sold at the Ray State Slot 3 Tank Battery located in the SW/4 SW/4 (Unit M) of Section 36. Prior to commingling, gas production from each “lease” will be separately metered using individual test separators with calibrated orifice meters that are manufactured to AGA specifications. Oil production from each “lease”/spacing unit will also be separately metered using turbine meters.

Exhibit 1 is a land plat showing Matador’s current development plan, flow lines, and central tank battery (“production facility”) in the subject area. The plat identifies the wellbores, the existing spacing units, and the common surface facilities located in the SW/4 SW/4 (Unit M) of Section 36.

Exhibit 2 is a C-102 for each of the wells currently permitted or drilled within the existing spacing units. There are no available production reports for these wells.

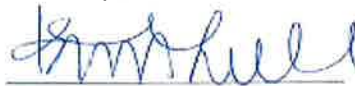
Exhibit 3 is a completed Application for Surface Commingling (Diverse Ownership) Form C-107-B, that includes a statement from Omar Enriquez, Production Engineer with Matador, identifying the facilities and the measurement devices to be utilized, a detailed schematic of the surface facilities (attachment A to the statement) and a referenced gas sample (attachment B to the statement).

Exhibit 4 is a list of the interest owners (including any owners of royalty or overriding royalty interests) affected by this application, an example of the letters sent by certified mail advising the interest owners that any objections must be filed in writing with the Division within 20 days from the date the Division receives this application, and proof of mailing. A copy of this application has been provided to the New Mexico State Land Office since state lands are involved.

Finally, attached as **Exhibit 5** are the draft, proposed, or approved communitization agreements for the acreage subject to this application.

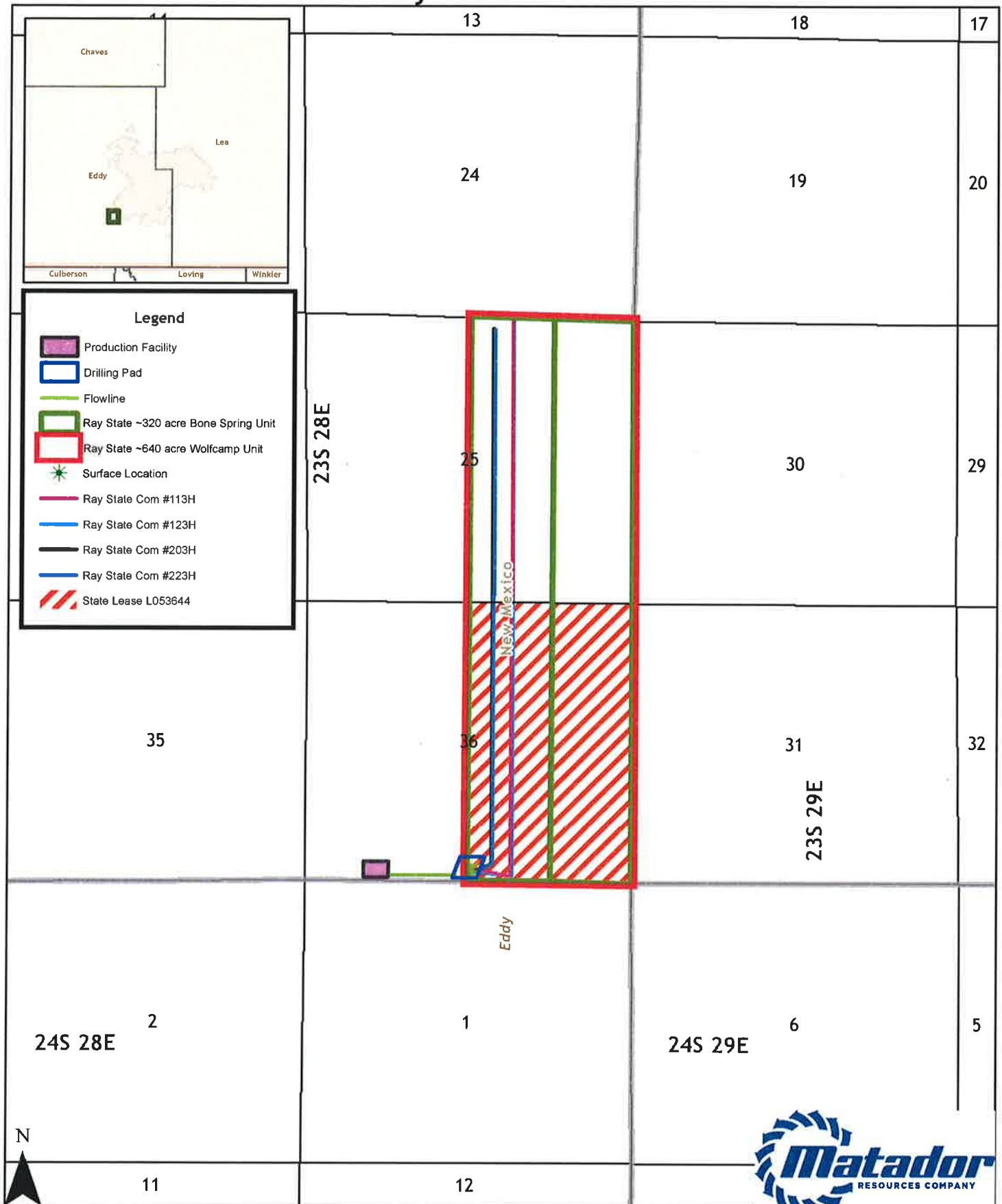
Thank you for your attention to this matter, and please feel free to call if you have any questions or require additional information.

Sincerely,



Kaitlyn A. Luck
**ATTORNEY FOR MATADOR PRODUCTION
COMPANY**

Ray State Land Plat



District I
1625 N. French Dr., Hobbs, NM 88240
Phone: (575) 393-6161 Fax: (575) 393-0720
District II
811 S. First St., Artesia, NM 88210
Phone: (575) 748-1283 Fax: (575) 748-9720
District III
1000 Rio Brazos Road, Aztec, NM 87410
Phone: (505) 334-6178 Fax: (505) 334-6170
District IV
1220 S. St. Francis Dr., Santa Fe, NM 87505
Phone: (505) 476-3460 Fax: (505) 476-3462

State of New Mexico
Energy, Minerals & Natural Resources
Department
OIL CONSERVATION DIVISION
1220 South St. Francis Dr.
Santa Fe, NM 87505

FORM C-102

Revised August 1, 2011

Submit one copy to appropriate

District Office

☐ AMENDED REPORT

WELL LOCATION AND ACREAGE DEDICATION PLAT

¹ API Number 30-015-47098	² Pool Code 15011	³ Pool Name Culebra Bluff, Bone Spring, South
⁴ Property Code 326434	⁵ Property Name RAY STATE COM	⁶ Well Number 113H
⁷ GRID No. 228937	⁸ Operator Name MATADOR PRODUCTION COMPANY	⁹ Elevation 2963'

¹⁰Surface Location

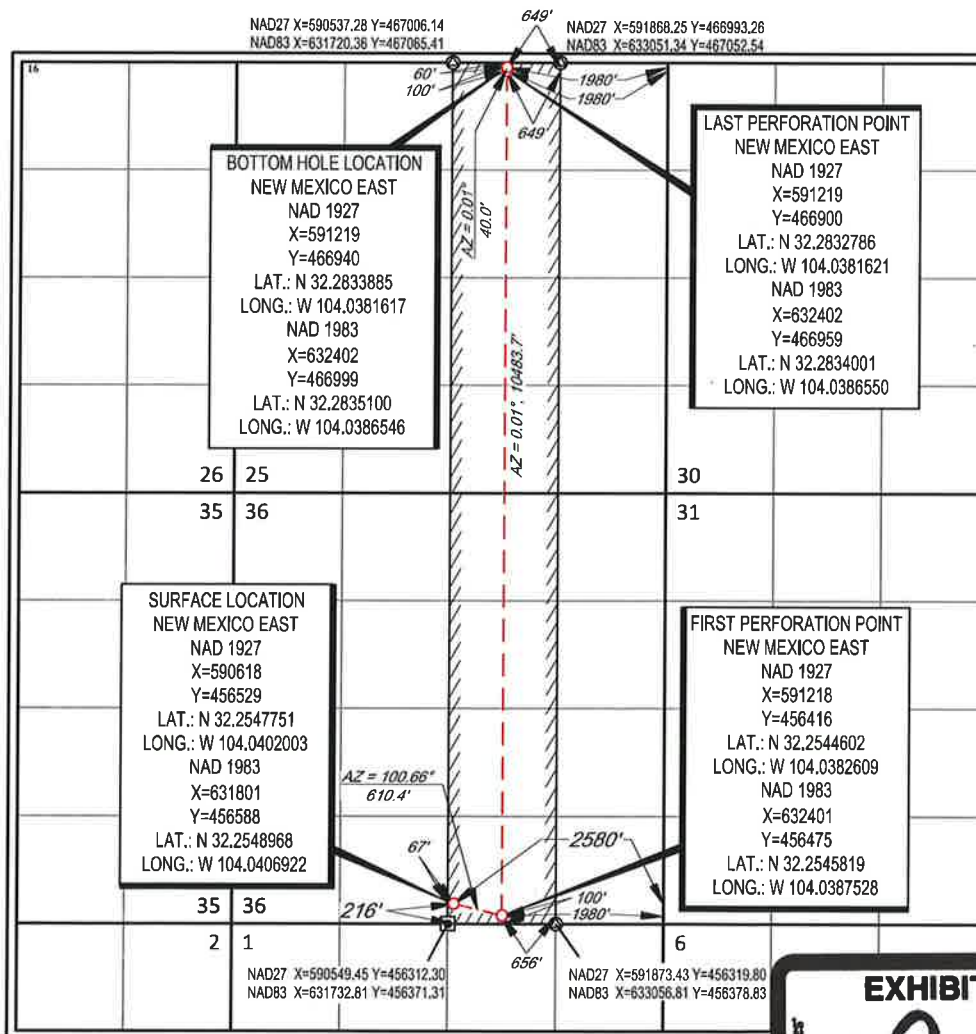
UL or lot no.	Section	Township	Range	Lot Idn	Feet from the	North/South line	Feet from the	East/West line	County
0	36	23-S	28-E	-	216'	SOUTH	2580'	EAST	EDDY

¹¹Bottom Hole Location If Different From Surface

UL or lot no.	Section	Township	Range	Lot Idn	Feet from the	North/South line	Feet from the	East/West line	County
B	25	23-S	28-E	-	60'	NORTH	1980'	EAST	EDDY

¹² Dedicated Acres 320	¹³ Joint or Infill Y	¹⁴ Consolidation Code C	¹⁵ Order No. Pooling Order No. R-20964
--------------------------------------	------------------------------------	---------------------------------------	--

No allowable will be assigned to this completion until all interests have been consolidated or a non-standard unit has been approved by the division.

¹⁷OPERATOR CERTIFICATION

I hereby certify that the information contained herein is true and complete to the best of my knowledge and belief, and that this organization either owns a working interest or released mineral interest in the land including the proposed bottom hole location or has a right to drill this well at this location pursuant to a contract with an owner of such a mineral or working interest, or to a voluntary pooling agreement or a compulsory pooling order heretofore entered by the division.

Sara Hartsfield 5/14/20
Signature Date

Sara Hartsfield

Printed Name

shartsfield@matadorresources.com

E-mail Address

¹⁸SURVEYOR CERTIFICATION

I hereby certify that the well location shown on this plat was plotted from field notes of actual surveys made by me or under my supervision, and that the same is true to the best of my belief.

10/11/2019

Date of Survey
Signature and Seal of Professional Surveyor



EXHIBIT

2

District I
1625 N French Dr, Hobbs, NM 88240
Phone: (575) 393-6161 Fax: (575) 393-0720

District II
811 S First St, Artesia, NM 88210
Phone: (575) 748-1283 Fax: (575) 748-9720

District III
1000 Rio Brazos Road, Aztec, NM 87410
Phone: (505) 334-6178 Fax: (505) 334-6170

District IV
1220 S St Francis Dr, Santa Fe, NM 87505
Phone: (505) 476-3460 Fax: (505) 476-3462

State of New Mexico
Energy, Minerals & Natural Resources
Department
OIL CONSERVATION DIVISION
1220 South St. Francis Dr.
Santa Fe, NM 87505

FORM C-102

Revised August 1, 2011

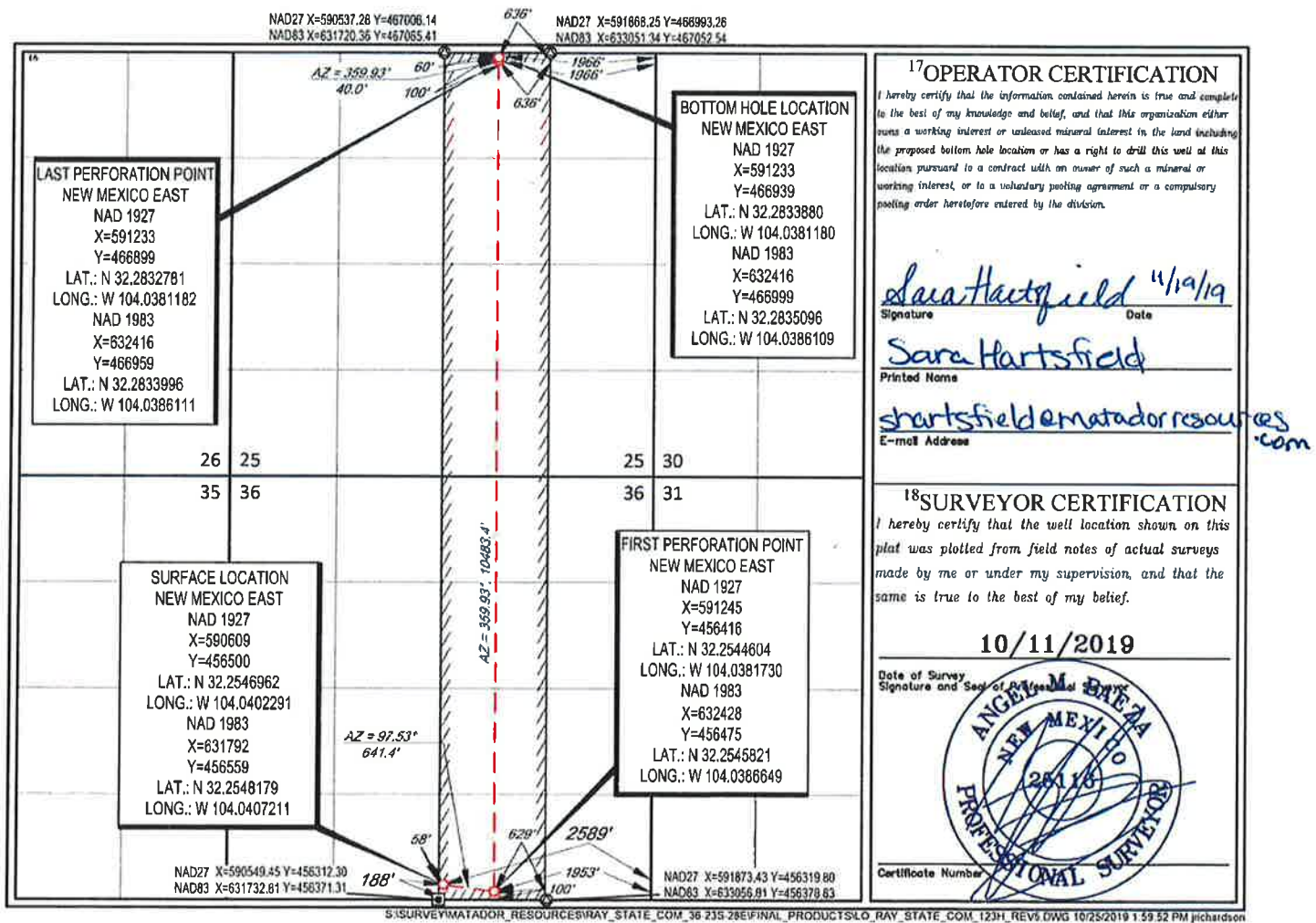
Submit one copy to appropriate

District Office☐ **AMENDED REPORT**

WELL LOCATION AND ACREAGE DEDICATION PLAT

¹ API Number 30-015-46667		² Pool Code 15011		³ Pool Name Culebra Bluff; Bone Spring, South					
⁴ Property Code		⁵ Property Name RAY STATE COM					⁶ Well Number 123H		
⁷ OGRID No. 228937		⁸ Operator Name MATADOR PRODUCTION COMPANY					⁹ Elevation 2963'		
¹⁰Surface Location									
UL or lot no. 0	Section 36	Township 23-S	Range 28-E	Lot Idn -	Feet from the 188'	North/South line SOUTH	Feet from the 2589'	East/West line EAST	County EDDY
¹¹Bottom Hole Location If Different From Surface									
UL or lot no. B	Section 25	Township 23-S	Range 28-E	Lot Idn -	Feet from the 60'	North/South line NORTH	Feet from the 1966'	East/West line EAST	County EDDY
¹² Dedicated Acres 320		¹³ Joint or Infill		¹⁴ Consolidation Code		¹⁵ Order No.			

No allowable will be assigned to this completion until all interests have been consolidated or a non-standard unit has been approved by the division.



S:\SURVEY\MATADOR RESOURCES\RAY STATE COM 36 235-28\FINAL PRODUCTS\LO RAY STATE COM 123H REV1.DWG 10/25/2019 1:59:52 PM richardson

District I
1825 N French Dr., Hobbs, NM 88240
Phone: (575) 393-6161 Fax: (575) 393-0720
District II
811 S First St., Artesia, NM 88210
Phone: (575) 748-1283 Fax: (575) 748-9720
District III
1000 Rio Brazos Road, Aztec, NM 87410
Phone: (505) 334-6178 Fax: (505) 334-6170
District IV
1220 S St Francis Dr., Santa Fe, NM 87505
Phone: (505) 476-3460 Fax: (505) 476-3462

State of New Mexico
Energy, Minerals & Natural Resources
Department
OIL CONSERVATION DIVISION
1220 South St. Francis Dr.
Santa Fe, NM 87505

FORM C-102

Revised August 1, 2011

Submit one copy to appropriate

District Office

☐ AMENDED REPORT

WELL LOCATION AND ACREAGE DEDICATION PLAT

¹ API Number 30-015-46475	² Pool Code 98220	³ Pool Name Purple Sage; Wolfcamp
⁴ Property Code	⁵ Property Name RAY STATE COM	⁶ Well Number 203H
⁷ GRID No. 228937	⁸ Operator Name MATADOR PRODUCTION COMPANY	⁹ Elevation 2962'

¹⁰Surface Location

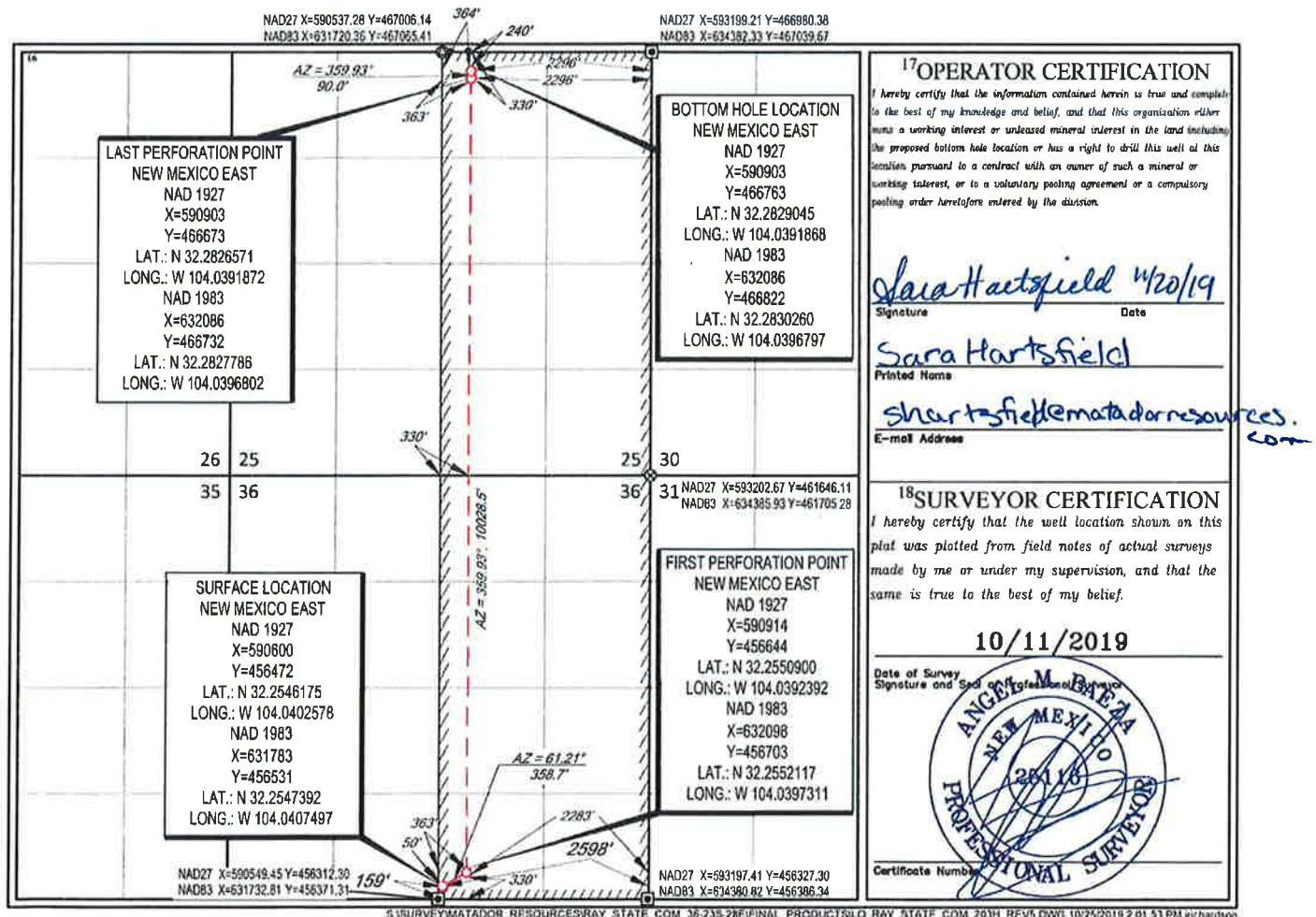
UL or lot no.	Section	Township	Range	Lot Idn	Feet from the	North/South line	Feet from the	East/West line	County
0	36	23-S	28-E	-	159'	SOUTH	2598'	EAST	EDDY

¹¹Bottom Hole Location If Different From Surface

UL or lot no.	Section	Township	Range	Lot Idn	Feet from the	North/South line	Feet from the	East/West line	County
B	25	23-S	28-E	-	240'	NORTH	2296'	EAST	EDDY

¹² Dedicated Acres 640	¹³ Joint or Infill	¹⁴ Consolidation Code	¹⁵ Order No.
---	-------------------------------	----------------------------------	-------------------------

No allowable will be assigned to this completion until all interests have been consolidated or a non-standard unit has been approved by the division.



District I
1625 N. French Dr., Hobbs, NM 88240
Phone: (575) 393-6161 Fax: (575) 393-0720
District II
811 S. First St., Artesia, NM 88210
Phone: (575) 748-1283 Fax: (575) 748-9720
District III
1000 Rio Brazos Road, Aztec, NM 87410
Phone: (505) 334-6178 Fax: (505) 334-6170
District IV
1220 S. St. Francis Dr., Santa Fe, NM 87505
Phone: (505) 476-3460 Fax: (505) 476-3462

State of New Mexico
Energy, Minerals & Natural Resources
Department
OIL CONSERVATION DIVISION
1220 South St. Francis Dr.
Santa Fe, NM 87505

FORM C-102

Revised August 1, 2011

Submit one copy to appropriate

District Office

☐ AMENDED REPORT

WELL LOCATION AND ACREAGE DEDICATION PLAT

¹ API Number 30-015-46476		² Pool Code 98220	³ Pool Name Purple Sage; Wolfcamp
⁴ Property Code	⁵ Property Name RAY STATE COM		⁶ Well Number 223H
⁷ GRID No. 228937	⁸ Operator Name MATADOR PRODUCTION COMPANY		⁹ Elevation 2961'

¹⁰Surface Location

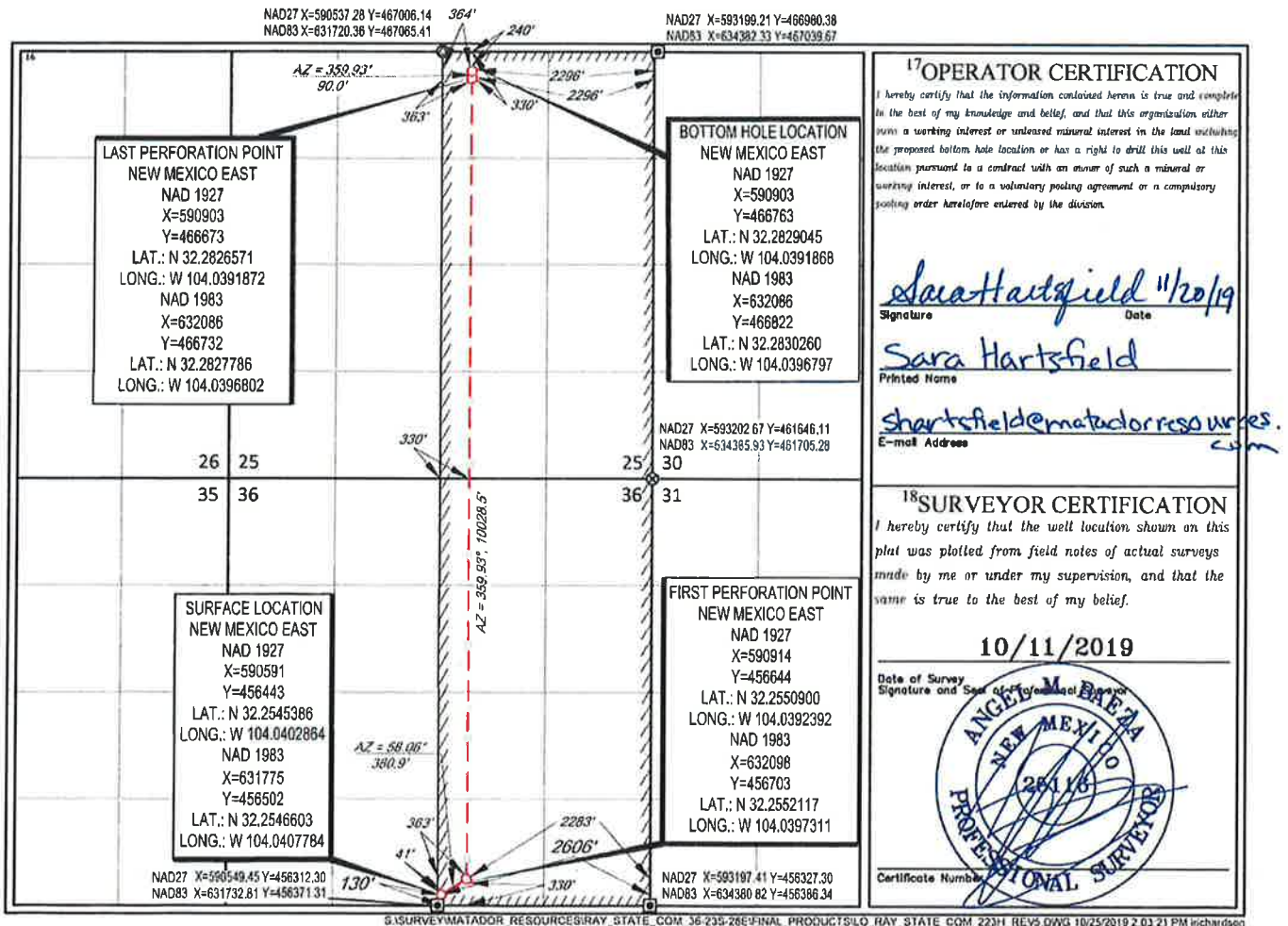
UL or lot no.	Section	Township	Range	Lot Idn	Feet from the	North/South line	Feet from the	East/West line	County
0	36	23-S	28-E	-	130'	SOUTH	2606'	EAST	EDDY

¹¹Bottom Hole Location If Different From Surface

UL or lot no.	Section	Township	Range	Lot Idn	Feet from the	North/South line	Feet from the	East/West line	County
B	25	23-S	28-E	-	240'	NORTH	2296'	EAST	EDDY

¹² Dedicated Acres 640	¹³ Joint or Infill	¹⁴ Consolidation Code	¹⁵ Order No.
--------------------------------------	-------------------------------	----------------------------------	-------------------------

No allowable will be assigned to this completion until all interests have been consolidated or a non-standard unit has been approved by the division.



District I
1625 N. French Drive, Hobbs, NM 88240
District II
811 S. First St., Artesia, NM 88210
District III
1000 Rio Brazos Road, Aztec, NM 87410
District IV
1220 S. St Francis Dr, Santa Fe, NM
87505

State of New Mexico
Energy, Minerals and Natural Resources Department

Form C-107-B
Revised August 1, 2011

OIL CONSERVATION DIVISION

1220 S. St Francis Drive
Santa Fe, New Mexico 87505

Submit the original
application to the Santa Fe
office with one copy to the
appropriate District Office.

APPLICATION FOR SURFACE COMMINGLING (DIVERSE OWNERSHIP)

OPERATOR NAME: Matador Production Company
OPERATOR ADDRESS: 5400 LBJ Freeway Tower 1 Suite 1500 Dallas, TX 75240
APPLICATION TYPE:

☐ Pool Commingling ☐ Lease Commingling ☒ Pool and Lease Commingling ☐ Off-Lease Storage and Measurement (Only if not Surface Commingled)

LEASE TYPE: ☒ Fee ☒ State ☐ Federal

Is this an Amendment to existing Order? ☐ Yes ☒ No If "Yes", please include the appropriate Order No.
Have the Bureau of Land Management (BLM) and State Land office (SLO) been notified in writing of the proposed commingling
☒ Yes ☐ No

(A) POOL COMMINGLING

Please attach sheets with the following information

(1) Pool Names and Codes	Gravities / BTU of Non-Commingled Production	Calculated Gravities / BTU of Commingled Production	Value of Non-Commingled Production	Calculated Value of Commingled Production	Volumes
Culebra Bluff, Bone Spring, South (15011)	46.9°	48.5°	\$35.00/bbl	\$35.00 bbl	1,200 bopd
Culebra Bluff, Bone Spring, South (15011)	1,327 BTU/scf		\$2.73/mcf		3,500 mcf
Purple Sage, Wolfcamp (Gas) (98220)	49.6°		\$35.00/bbl		1,739 bopd
Purple Sage, Wolfcamp (Gas) (98220)	1,250 BTU/scf		\$2.57/mcf		10,625 mcf

- (2) Are any wells producing at top allowables? ☐ Yes ☒ No
(3) Has all interest owners been notified by certified mail of the proposed commingling? ☒ Yes ☐ No
(4) Measurement type: ☒ Metering ☐ Other (Specify)
(5) Will commingling decrease the value of production? ☐ Yes ☒ No If "yes", describe why commingling should be approved

(B) LEASE COMMINGLING

Please attach sheets with the following information

- (1) Pool Name and Code-
(2) Is all production from same source of supply? ☐ Yes ☐ No
(3) Has all interest owners been notified by certified mail of the proposed commingling? ☐ Yes ☐ No
(4) Measurement type: ☐ Metering ☐ Other (Specify)

(C) POOL and LEASE COMMINGLING

Please attach sheets with the following information

- (1) Complete Sections A and E.

(D) OFF-LEASE STORAGE and MEASUREMENT

Please attached sheets with the following information

- (1) Is all production from same source of supply? ☐ Yes ☐ No
(2) Include proof of notice to all interest owners.

(E) ADDITIONAL INFORMATION (for all application types)

Please attach sheets with the following information

- (1) A schematic diagram of facility, including legal location.
(2) A plat with lease boundaries showing all well and facility locations. Include lease numbers if Federal or State lands are involved.
(3) Lease Names, Lease and Well Numbers, and API Numbers.

I hereby certify that the information above is true and complete to the best of my knowledge and belief.

SIGNATURE: Omar Enriquez TITLE: Senior Production Engineer DATE: 8/5/2020

TYPE OR PRINT NAME Omar Enriquez TELEPHONE NO. (972) 371 5200

E-MAIL ADDRESS: oenriquez@matadorresources.com



Matador Production Company

One Lincoln Centre • 5400 LBJ Freeway • Suite 1500 • Dallas, Texas 75240

Voice 972.371.5427 • Fax 972.371.5201

oenriquez@matadorresources.com

Omar Enriquez
Senior Production Engineer

August 5, 2020

New Mexico Oil Conservation Division
1220 South St. Francis Drive
Santa Fe, NM 87505

Re: Application of Matador Production Company for Administrative Approval to Surface Commingle (Pool and Lease) Production from Spacing Units Comprising E2 and W2E2 of Sections 36 and 25 Township 23 South, Range 28 East NMPM, Eddy County, New Mexico (the "Lands")

To Whom This May Concern,

Matador Production Company ("Matador"), OGRID: 228937, requests to commingle production from four distinct wells located on the Lands, and future production from the Lands as described herein. All wells will be metered through individual three-phase separators with an oil turbine meter and gas orifice meter. The gas commingling will occur after individual measurement at each well. Gas exiting each separator flows into one gathering line, as depicted on **Exhibit A**, the Longwood RB Pipeline, LLC line. Each well on the Lands will have its own three-phase separator with an orifice meter manufactured and assembled in accordance with American Gas Association (AGA) specifications. All primary and secondary Electronic Flow Measurement (EFM) equipment is tested and calibrated by a reputable third-party measurement company in accordance with industry specifications.

The orifice meter is the preferred measurement device utilized by midstream and E&P companies in natural gas measurement. The gas samples are obtained at the time of the meter testing/calibration and the composition and heating value are determined by a laboratory in accordance with American Petroleum Institute (API) specifications to ensure accurate volume and Energy (MMBTU) determinations. See example from Fesco Laboratory attached as **Exhibit B** hereto.

The flow stream from each wellhead is demonstrated in the Process Flow Diagram (PFD) attached as **Exhibit A** hereto. This PFD shows that the water, oil, and gas exit the wellbore and flow into a wellhead three-phase separator which separates the oil, gas, and water. The oil is measured via turbine meter which is calibrated periodically in accordance with industry specifications by a third-party measurement company for accuracy. The gas is measured on a volume and MMBTU basis by an orifice meter and supporting EFM equipment in accordance with American Petroleum

Association (API) Chapter 21.1. The gas is then sent into a gathering line where it is commingled with each of the other wells' metered gas, as shown on **Exhibit A**. The gathering line gas is then metered by another orifice meter at the tank battery check to show the total volume of gas leaving the Tank Battery. This meter is tested and calibrated in accordance with industry specifications and volume and energy are determined on an hourly, daily, and monthly basis. Once the gas exits this final tank battery sales check it travels directly into a third party sales connect meter. Longwood RB Pipeline, LLC has its own orifice meter that measures the gas for custody transfer. These meters are also calibrated periodically to ensure the measurement accuracy.

In conclusion, all the oil and gas produced on the Lands will be metered at each wellhead and allocated correctly using the same measurement equipment as the pipeline sales measurement specifications accepted by API as industry standard.

Very truly yours,

MATADOR PRODUCTION COMPANY

Omar Enriquez

Digitally signed by Omar Enriquez
DN: cn=Omar Enriquez, o=oe,
email=oenriquez@matadorresources.com, c=US
Date: 2020.08.09 16:24:28 -05'00'

Omar Enriquez
Production Engineer

OE/bkf
Enclosures

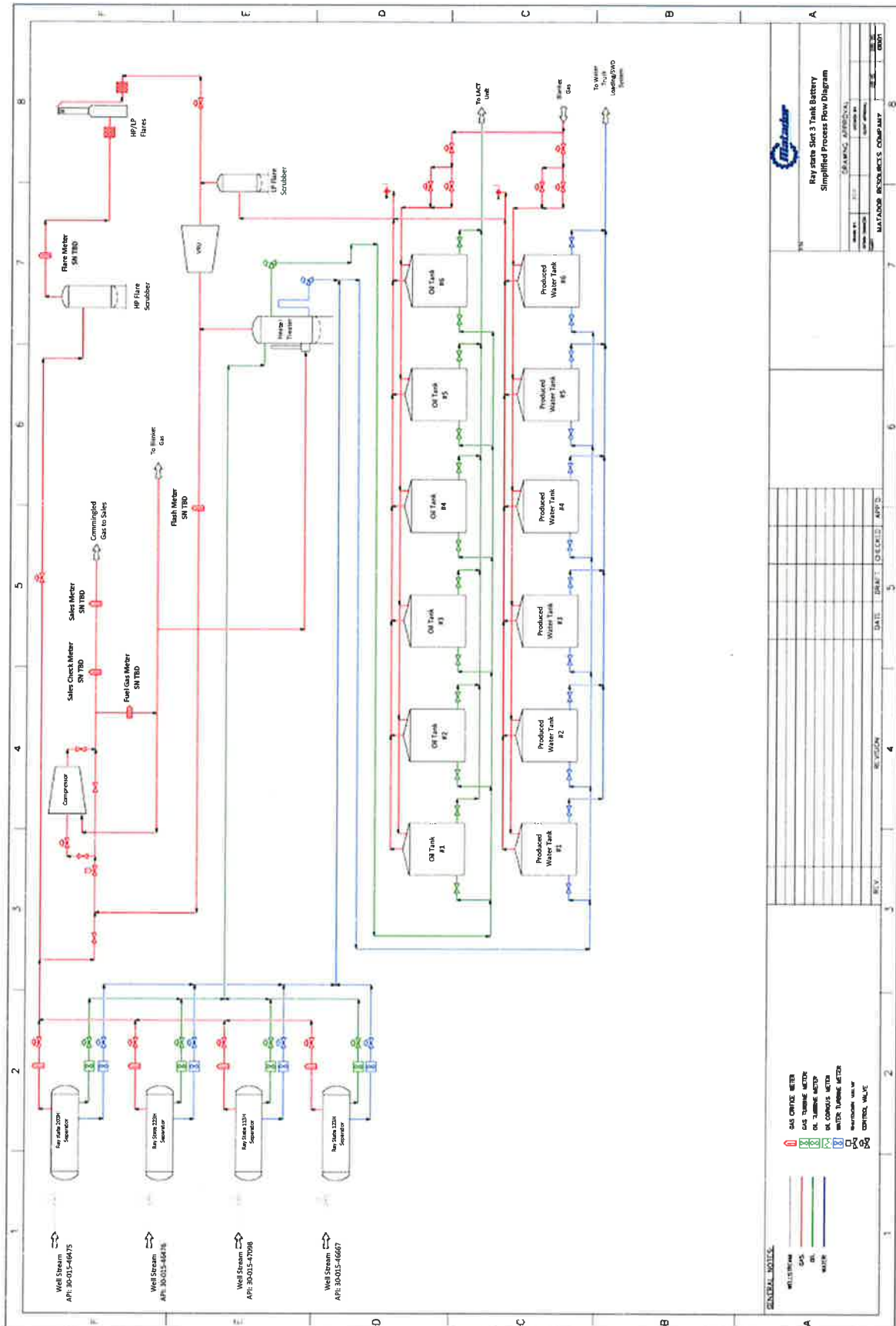


EXHIBIT
3A

January 12, 2017

FESCO, Ltd.
1100 Fesco Ave. - Alice, Texas 78332

For: Matador Production Company
One Lincoln Centre
5400 LBJ Freeway, Suite 1500
Dallas, Texas 75240

Sample: Mallon 27 Federal Com No. 1H
First Stage Separator
Spot Gas Sample @ 350 psig & 108 °F

Date Sampled: 12/28/2016

Job Number: 63963.021

CHROMATOGRAPH EXTENDED ANALYSIS - GPA 2286

COMPONENT	MOL%	GPM
Hydrogen Sulfide*	< 0.001	
Nitrogen	4.392	
Carbon Dioxide	0.101	
Methane	69.412	
Ethane	15.072	4.024
Propane	7.407	2.037
Isobutane	0.621	0.203
n-Butane	1.671	0.526
2-2 Dimethylpropane	0.004	0.002
Isopentane	0.305	0.111
n-Pentane	0.324	0.117
Hexanes	0.253	0.104
Heptanes Plus	<u>0.438</u>	<u>0.178</u>
Totals	100.000	7.302

Computed Real Characteristics Of Heptanes Plus:

Specific Gravity ----- 3.374 (Air=1)
Molecular Weight ----- 97.32
Gross Heating Value ----- 5032 BTU/CF

Computed Real Characteristics Of Total Sample:

Specific Gravity ----- 0.785 (Air=1)
Compressibility (Z) ----- 0.9960
Molecular Weight ----- 22.64
Gross Heating Value
Dry Basis ----- 1289 BTU/CF
Saturated Basis ----- 1268 BTU/CF

*Hydrogen Sulfide tested on location b Stain Tube Method (GPA 2377)
0.031 Gr/100 CF, 0.5 PPMV or <0.0001 Mol%

Base Conditions: 14.650 PSI & 60 Deg F

Sampled By: (16) EJ/Ronnie
Analyst: MR
Processor: NG
Cylinder ID: T-4511

Certified: FESCO, Ltd. - Alice, Texas

David Dannhaus 361-661-7015



FESCO, Ltd.

Job Number: 63963.021

CHROMATOGRAPH EXTENDED ANALYSIS - GPA 2286

TOTAL REPORT

COMPONENT	MOL %	GPM	WT %
Hydrogen Sulfide*	< 0.001		< 0.001
Nitrogen	4.392		5.434
Carbon Dioxide	0.101		0.196
Methane	69.412		49.182
Ethane	15.072	4.024	20.016
Propane	7.407	2.037	14.426
Isobutane	0.621	0.203	1.594
n-Butane	1.671	0.526	4.290
2,2 Dimethylpropane	0.004	0.002	0.013
Isopentane	0.305	0.111	0.972
n-Pentane	0.324	0.117	1.032
2,2 Dimethylbutane	0.003	0.001	0.011
Cyclopentane	0.000	0.000	0.000
2,3 Dimethylbutane	0.036	0.015	0.137
2 Methylpentane	0.075	0.031	0.285
3 Methylpentane	0.045	0.018	0.171
n-Hexane	0.094	0.039	0.358
Methylcyclopentane	0.070	0.024	0.260
Benzene	0.030	0.008	0.104
Cyclohexane	0.055	0.019	0.204
2-Methylhexane	0.012	0.006	0.053
3-Methylhexane	0.015	0.007	0.066
2,2,4 Trimethylpentane	0.000	0.000	0.000
Other C7's	0.056	0.024	0.245
n-Heptane	0.032	0.015	0.142
Methylcyclohexane	0.050	0.020	0.217
Toluene	0.017	0.006	0.069
Other C8's	0.048	0.022	0.234
n-Octane	0.014	0.007	0.071
Ethylbenzene	0.002	0.001	0.009
M & P Xylenes	0.004	0.002	0.019
O-Xylene	0.001	0.000	0.005
Other C9's	0.019	0.010	0.106
n-Nonane	0.004	0.002	0.023
Other C10's	0.007	0.004	0.044
n-Decane	0.001	0.001	0.006
Undecanes (11)	<u>0.001</u>	<u>0.001</u>	<u>0.006</u>
Totals	100.000	7.302	100.000

Computed Real Characteristics Of Total Sample:

Specific Gravity	0.785	(Air=1)
Compressibility (Z)	0.9960	
Molecular Weight	22.64	
Gross Heating Value		
Dry Basis	1289	BTU/CF
Saturated Basis	1268	BTU/CF



Kaitlyn A. Luck
Phone (505) 954-7286
kaluck@hollandhart.com

August 10, 2020

CERTIFIED MAIL
RETURN RECEIPT REQUESTED

TO: ALL AFFECTED PERSONS

Re: Application of Matador Production Company to authorize pool and lease commingling, off-lease storage, off lease measurement, and off-lease marketing at the Ray State Slot 3 Tank Battery located in the SW/4 SW/4 (Unit M) of Section 36, Township 23 South, Range 28 East, NMPM, Eddy County, New Mexico.

Ladies and Gentlemen:

Enclosed is a copy of the above-referenced application, which was filed with the New Mexico Oil Conservation Division on this date. Any objection to this application must be filed in writing within twenty days from this date at the Division's Santa Fe office located at 1220 South St. Francis Drive, Santa Fe, New Mexico, 87505. If no objection is received within this twenty-day period, this application may be approved administratively by the Division.

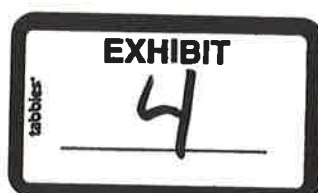
If you have any questions about this application, please contact the following:

Brian Fancher
Matador Production Company
972-371-5242
bfancher@matadorresources.com

Sincerely,

A handwritten signature in blue ink, appearing to read "Kaitlyn Luck", written over a horizontal line.

Kaitlyn A. Luck
ATTORNEY FOR
MATADOR PRODUCTION COMPANY



MRC - PLC -Ray State 203H, 223H, 123H, 113H
Postal Report

MailClass	TrackingNo	ToName	DeliveryAddress	City	State	Zip	MailDate	transactionid
Certified with Return Receipt (Signature)	9414811898765829352983	1836 Royalty Partners, LLC	306 W Wall St Ste 620	Midland	TX	79701-5118	08/10/2020	11815033
Certified with Return Receipt (Signature)	9414811898765829352938	AllDale Minerals II, LP	2100 Ross Ave Ste 1870	Dallas	TX	75201-6773	08/10/2020	11815034
Certified with Return Receipt (Signature)	9414811898765829352617	Alma Granberry, c/o Walter Granberry Jr.	4811 14th St	Lubbock	TX	79416-4601	08/10/2020	11815036
Certified with Return Receipt (Signature)	9414811898765829352655	BK Exploration Corporation	10122 N Dover Pl	Owasso	OK	74055-7737	08/10/2020	11815037
Certified with Return Receipt (Signature)	9414811898765829352662	Brady Lynn Raindl	PO Box 65043	Lubbock	TX	79464-5043	08/10/2020	11815038
Certified with Return Receipt (Signature)	9414811898765829352624	Brandi Blair Raindl	1104 Telluride Ct	Midland	TX	79705-1906	08/10/2020	11815039
Certified with Return Receipt (Signature)	9414811898765829352600	Brent Mitchell Raindl	3315 Lancelot Dr	Dallas	TX	75229-5019	08/10/2020	11815040
Certified with Return Receipt (Signature)	9414811898765829352693	C. Ray Allen & Jacqueline W. Allen c/o Christopher Allen	13914 Shoreline Dr	Willis	TX	77318-5291	08/10/2020	11815041
Certified with Return Receipt (Signature)	9414811898765829352648	Chalcam Exploration, LLC	403 Tierra Berrenda Dr	Roswell	NM	88201-7837	08/10/2020	11815042
Certified with Return Receipt (Signature)	9414811898765829352686	Chase Oil Corporation	PO Box 1767	Artesia	NM	88211-1767	08/10/2020	11815043
Certified with Return Receipt (Signature)	9414811898765829352631	Chevron U.S.A., Inc	1400 Smith St	Houston	TX	77002-7327	08/10/2020	11815044
Certified with Return Receipt (Signature)	9414811898765829352679	Clay Johnson	1603 N Big Spring St Unit 1	Midland	TX	79701-2621	08/10/2020	11815045
Certified with Return Receipt (Signature)	9414811898765829352112	CLM Production Company	PO Box 881	Roswell	NM	88202-0881	08/10/2020	11815046
Certified with Return Receipt (Signature)	9414811898765829352150	Curtis A. Anderson & Edna I. Anderson	9314 Cherry Brook Ln	Frisco	TX	75033-0651	08/10/2020	11815047
Certified with Return Receipt (Signature)	9414811898765829352167	Cypress Gas Corporation	9100 E Mineral Cir	Centennial	CO	80112-3401	08/10/2020	11815048
Certified with Return Receipt (Signature)	9414811898765829352129	Debra Kay Primera	PO Box 28504	Austin	TX	78755-8504	08/10/2020	11815049
Certified with Return Receipt (Signature)	9414811898765829352198	Doug Ferguson & Beck Ferguson	PO Box 432	Midland	TX	79702-0432	08/10/2020	11815051
Certified with Return Receipt (Signature)	9414811898765829352143	Dwane Arthur c/o Michael D. Arthur	3530 Ketch Ave	Oxnard	CA	93035-3131	08/10/2020	11815052
Certified with Return Receipt (Signature)	9414811898765829352181	Edwin Ralph Arthur c/o Michael D. Arthur	3530 Ketch Ave	Oxnard	CA	93035-3131	08/10/2020	11815053
Certified with Return Receipt (Signature)	9414811898765829352136	First Century Oil, Inc.	PO Box 1518	Roswell	NM	88202-1518	08/10/2020	11815054
Certified with Return Receipt (Signature)	9414811898765829352365	Frank Petmecky	11576 Barbet Ct	Moreno Valley	CA	92557-5419	08/10/2020	11815059
Certified with Return Receipt (Signature)	9414811898765829352327	Gary J. Lamb	PO Box 3383	Midland	TX	79702-3383	08/10/2020	11815060
Certified with Return Receipt (Signature)	9414811898765829352303	Geraldetta Marrs	1909 Sentry Cir	Carlsbad	NM	88220-4178	08/10/2020	11815061
Certified with Return Receipt (Signature)	9414811898765829352396	Glen B. Williams & Vivian Williams	3166 County Line Rd	Mountain Grove	MO	65711-2711	08/10/2020	11815062
Certified with Return Receipt (Signature)	9414811898765829352341	Haley Kurtchner	2224 Collins Ave	Carlsbad	NM	88220-9672	08/10/2020	11815063
Certified with Return Receipt (Signature)	9414811898765829352389	Harvard Exploration Ltd. - Series 7 Attn Jeff L Harvard	703 Brazos St	Roswell	NM	88201-3373	08/10/2020	11815064
Certified with Return Receipt (Signature)	9414811898765829352334	Highland Texas Energy Company	7557 Rambler Rd Ste 918	Dallas	TX	75231-2306	08/10/2020	11815065
Certified with Return Receipt (Signature)	9414811898765829352372	Hillier, LLC	4620 Livingston Ave	Dallas	TX	75209-6024	08/10/2020	11815066
Certified with Return Receipt (Signature)	9414811898765829352013	Holsum, Inc.	723 N Main St	Roswell	NM	88201	08/10/2020	11815067
Certified with Return Receipt (Signature)	9414811898765829352068	J. Hiram Moore, Ltd.	PO Box 94077	Southlake	TX	76092-0120	08/10/2020	11815069
Certified with Return Receipt (Signature)	9414811898765829352044	Jack Austin Richardson	PO Box 3660	Roswell	NM	88202-3660	08/10/2020	11815073
Certified with Return Receipt (Signature)	9414811898765829352037	James W. Williams & Troyce Williams	7985 Highway 38 Apt 38	Mountain Grove	MO	65711-2906	08/10/2020	11815075
Certified with Return Receipt (Signature)	9414811898765829352419	Jan Duncker	225 Clearwood Ave	Riverside	CA	92506-6262	08/10/2020	11815077
Certified with Return Receipt (Signature)	9414811898765829352426	John A. Petmecky c/o Jeffery Alan Petmecky	8518 Yarrow Ln	Riverside	CA	92508-2926	08/10/2020	11815080
Certified with Return Receipt (Signature)	9414811898765829352501	John Michael & Marion Richardson	3660 Highway 41	Stanley	NM	87056-9708	08/10/2020	11815091
Certified with Return Receipt (Signature)	9414811898765829352549	Jon M. Morgan	PO Box 1015	Midland	TX	79702-1015	08/10/2020	11815093
Certified with Return Receipt (Signature)	9414811898765829352532	Joyce Marie Pillitter	652 Via Zapata	Riverside	CA	92507-6424	08/10/2020	11815095
Certified with Return Receipt (Signature)	9414811898765829352570	L.D. Williams & Shirley Ann Williams	305 S Summit St	Fort Stockton	TX	79735	08/10/2020	11815096
Certified with Return Receipt (Signature)	9414811898765829350217	Larry G. Phillips	850 Ranch Road 2341	Burnet	TX	78611-5816	08/10/2020	11815097
Certified with Return Receipt (Signature)	9414811898765829350255	Laura K. Reed, LLC	1217 W 3rd St	Roswell	NM	88201-2046	08/10/2020	11815098
Certified with Return Receipt (Signature)	9414811898765829350262	Lois Hasting	1057 Camino Manana	Santa Fe	NM	87501-1088	08/10/2020	11815099
Certified with Return Receipt (Signature)	9414811898765829350224	Map00-Net	101 N Robinson Ave Ste 1000	Oklahoma City	OK	73102-5513	08/10/2020	11815100
Certified with Return Receipt (Signature)	9414811898765829350200	Margaret L. Reischman	19 Riverside Dr	Roswell	NM	88201-3952	08/10/2020	11815101
Certified with Return Receipt (Signature)	9414811898765829350293	Marie Ellayna Ryan	503 W Orchard Ln	Carlsbad	NM	88220-4643	08/10/2020	11815102
Certified with Return Receipt (Signature)	9414811898765829350286	Melissa Brown	805 W Leadora Ave	Glendora	CA	91741-1948	08/10/2020	11815104
Certified with Return Receipt (Signature)	9414811898765829350231	MHM Resources, LP	PO Box 51570	Midland	TX	79710-1570	08/10/2020	11815105

MRC - PLC -Ray State 203H, 223H, 123H, 113H
Postal Report

Certified with Return Receipt (Signature)	9414811898765829350279	Mineras Resources, LLC	7557 Rambler Rd Ste 918	Dallas	TX	75231-2306	08/10/2020	11815106
Certified with Return Receipt (Signature)	9414811898765829350811	Morris E. Schertz	PO Box 2588	Roswell	NM	88202-2588	08/10/2020	11815107
Certified with Return Receipt (Signature)	9414811898765829350859	Ned R. Arthur	PO Box 1023	Newton	KS	67114-1023	08/10/2020	11815108
Certified with Return Receipt (Signature)	9414811898765829350866	Pheasant Energy, LLC	PO Box 471458	Fort Worth	TX	76147-1458	08/10/2020	11815109
Certified with Return Receipt (Signature)	9414811898765829350828	Ponderosa Royalty, LLC	2501 Humble Ave	Midland	TX	79705-8407	08/10/2020	11815110
Certified with Return Receipt (Signature)	9414811898765829350804	Ranchito AD4, LP	2100 Ross Ave Ste 1870	Dallas	TX	75201-6773	08/10/2020	11815111
Certified with Return Receipt (Signature)	9414811898765829350897	Read & Stevens Employee Benefit Plan	PO Box 1518	Roswell	NM	88202-1518	08/10/2020	11815112
Certified with Return Receipt (Signature)	9414811898765829350880	Read & Stevens, Inc.	PO Box 1518	Roswell	NM	88202-1518	08/10/2020	11815114
Certified with Return Receipt (Signature)	9414811898765829350835	Rfort Mineral Properties, LLC	9716 Admiral Emerson Ave NE	Albuquerque	NM	87111-1318	08/10/2020	11815115
Certified with Return Receipt (Signature)	9414811898765829350873	Richardson Mineral & Royalty, LLC	105 W 3rd St	Roswell	NM	88201-4750	08/10/2020	11815116
Certified with Return Receipt (Signature)	9414811898765829350712	Ricky D. Raindl	PO Box 142454	Irving	TX	75014-2454	08/10/2020	11815117
Certified with Return Receipt (Signature)	9414811898765829350750	Robert G. Hooper	3212 Chelsea Pl	Midland	TX	79705-2324	08/10/2020	11815118
Certified with Return Receipt (Signature)	9414811898765829350729	Robert Mitchell Raindl	4209 125th St	Lubbock	TX	79423-7950	08/10/2020	11815120
Certified with Return Receipt (Signature)	9414811898765829350705	Ronald Boren	3937 Columbia Ave	Riverside	CA	92501-1548	08/10/2020	11815121
Certified with Return Receipt (Signature)	9414811898765829350798	Sharron S. Trollinger	6026 Meadowcreek Dr	Dallas	TX	75248-5452	08/10/2020	11815122
Certified with Return Receipt (Signature)	9414811898765829350743	State of New Mexico	310 Old Santa Fe Trl, PO Box 1148	Santa Fe	NM	87501-2708	08/10/2020	11815123
Certified with Return Receipt (Signature)	9414811898765829350781	Sylvite Corporation	PO Box 394	Broken Arrow	OK	74013-0394	08/10/2020	11815124
Certified with Return Receipt (Signature)	9414811898765829350736	Tap Rock Minerals, LP	602 Park Point Dr Ste 200	Golden	CO	80401-9359	08/10/2020	11815125
Certified with Return Receipt (Signature)	9414811898765829350774	The Cress Gamily Trust under Trust Agreement date April 15, 1993	1241 Stanford Ave	Saint Paul	MN	55105-2810	08/10/2020	11815126
Certified with Return Receipt (Signature)	9414811898765829350910	The Roach Foundation	777 Taylor St Ph P2J	Fort Worth	TX	76102-4922	08/10/2020	11815127
Certified with Return Receipt (Signature)	9414811898765829350958	Tierra Oil Company, LLC	PO Box 700968	San Antonio	TX	78270-0968	08/10/2020	11815128
Certified with Return Receipt (Signature)	9414811898765829350965	Tommy L. Fort	PO Box 5356	Midland	TX	79704-5356	08/10/2020	11815130
Certified with Return Receipt (Signature)	9414811898765829350927	Trinity Pollock	4 Road 3639	Aztec	NM	87410-9417	08/10/2020	11815131
Certified with Return Receipt (Signature)	9414811898765829350996	Tundra AD3, LP	2100 Ross Ave Ste 1870	Dallas	TX	75201-6773	08/10/2020	11815133
Certified with Return Receipt (Signature)	9414811898765829350941	Turner Royalties, LLC	3 Brass Horse Ln	Santa Fe	NM	87508-9400	08/10/2020	11815134
Certified with Return Receipt (Signature)	9414811898765829350934	Walter Granberry, Jr.	4811 14th St	Lubbock	TX	79416-4601	08/10/2020	11815136
Certified with Return Receipt (Signature)	9414811898765829350613	Watson Properties, LLC	3905 Futura Dr	Roswell	NM	88201-6797	08/10/2020	11815138
Certified with Return Receipt (Signature)	9414811898765829350668	Wing Resources III, LLC	2100 McKinney Ave Ste 1540	Dallas	TX	75201-2140	08/10/2020	11815140
Certified with Return Receipt (Signature)	9414811898765829350620	Alfred J. Rodriguez	28 Kennington Ct	Dallas	TX	75248-7902	08/10/2020	11815141
Certified with Return Receipt (Signature)	9414811898765829350606	Betty R. Young	1311 W 3rd St	Roswell	NM	88201-2048	08/10/2020	11815142
Certified with Return Receipt (Signature)	9414811898765829350699	Carolyn R. Beal	PO Box 3098	Midland	TX	79702-3098	08/10/2020	11815143
Certified with Return Receipt (Signature)	9414811898765829350644	CSA Petroleum	PO Box 318	Hunt	TX	78024-0318	08/10/2020	11815144
Certified with Return Receipt (Signature)	9414811898765829350682	Veritas Permian Resources LLC	PO Box 10850	Fort Worth	TX	76114-0850	08/10/2020	11815145
Certified with Return Receipt (Signature)	9414811898765829350637	Jack C. Holland	180 Mooring Buoy	Hilton Head Island	SC	29928-5252	08/10/2020	11815146
Certified with Return Receipt (Signature)	9414811898765829350675	Kaiser-Francis Oil Company	6733 S Yale Ave	Tulsa	OK	74136-3302	08/10/2020	11815147
Certified with Return Receipt (Signature)	9414811898765829350156	B&N Energy, LLC A TX LLC	PO Box 1227	Los Gatos	CA	95031-1227	08/10/2020	11815149
Certified with Return Receipt (Signature)	9414811898765829350163	Nancy Peacock Mackey	4818 S Zunis Ave	Tulsa	OK	74105-8760	08/10/2020	11815150
Certified with Return Receipt (Signature)	9414811898765829350101	George Phillip Huey	5850 E Lovers Ln Apt 315	Dallas	TX	75206-2953	08/10/2020	11815152
Certified with Return Receipt (Signature)	9414811898765829350149	Mr. and Mrs. R.R. McDearmon	2533 20th Ave N	Texas City	TX	77590-4807	08/10/2020	11815154
Certified with Return Receipt (Signature)	9414811898765829350187	Ralph E. Peacock	4818 S Zunis Ave	Tulsa	OK	74105-8760	08/10/2020	11815155
Certified with Return Receipt (Signature)	9414811898765829350170	Reserve Management, Inc.	PO Box 8629	Tyler	TX	75711-8629	08/10/2020	11815157
Certified with Return Receipt (Signature)	9414811898765829350316	Roger J. Westerberg, Trustee of the Roger J. Westerberg Trust	805 Eagle Dr	Rock Valley	IA	51247-1503	08/10/2020	11815158
Certified with Return Receipt (Signature)	9414811898765829350354	Ruth C. Steger c/o Susan Steger Rhoads	6905 Ellsworth Ave	Dallas	TX	75214-2733	08/10/2020	11815159
Certified with Return Receipt (Signature)	9414811898765829350361	Devon Energy Production Co., LP	333 W Sheridan Ave	Oklahoma City	OK	73102-5010	08/10/2020	11815160
Certified with Return Receipt (Signature)	9414811898765829350323	Sealy Huchings Cavin, Inc.	504 N Wyoming Ave	Roswell	NM	88201-2169	08/10/2020	11815161

MRC - PLC -Ray State 203H, 223H, 123H, 113H
Postal Report

Certified with Return Receipt (Signature)	9414811898765829358817	Scott Wilson and Cynthia M. Wilson c/o Cynthia Mae Wilson	4601 Mirador Dr	Austin	TX	78735-1554	08/10/2020	11815208
Certified with Return Receipt (Signature)	9414811898765829358855	Stephen Wolf	PO Box 268	Tyler	TX	75710-0268	08/10/2020	11815209
Certified with Return Receipt (Signature)	9414811898765829358862	Tumbler Energy Partners, LLC	3811 Turtle Creek Blvd Ste 800	Dallas	TX	75219-4550	08/10/2020	11815210
Certified with Return Receipt (Signature)	9414811898765829358800	W.R. Hughey, II	6406 Boca Raton Ct	Tyler	TX	75703-5700	08/10/2020	11815212
Certified with Return Receipt (Signature)	9414811898765829358893	Brett G. Taylor	PO Box 9	Aledo	TX	76008-0009	08/10/2020	11815213

MRC - PLC -Ray State 203H, 223H, 123H, 113H
Postal Report

Certified with Return Receipt (Signature)	9414811898765829350309	Union Hill Oil & Gas Co	801 Orthopedic Way	Arlington	TX	76015-1630	08/10/2020	11815162
Certified with Return Receipt (Signature)	9414811898765829350392	Virginia A. Desmond	PO Box 1857	Roswell	NM	88202-1857	08/10/2020	11815163
Certified with Return Receipt (Signature)	9414811898765829350347	Accelerate Resources Operating, LLC	5949 Sherry Ln Ste 1060	Dallas	TX	75225-8112	08/10/2020	11815164
Certified with Return Receipt (Signature)	9414811898765829350385	Oxy USA WTP Limited Partnership	5 Greenway Plz Ste 110	Houston	TX	77046-0521	08/10/2020	11815165
Certified with Return Receipt (Signature)	9414811898765829350330	Susannah D. Adelson, Trustee of James Adelson and Family Trust 2015	15 E 5th St Ste 3300	Tulsa	OK	74103-4340	08/10/2020	11815166
Certified with Return Receipt (Signature)	9414811898765829350019	Zunis Energy, LLC	15 E 5th St Ste 3300	Tulsa	OK	74103-4340	08/10/2020	11815168
Certified with Return Receipt (Signature)	9414811898765829350064	CEP Minerals, LLC	PO Box 50820	Midland	TX	79710-0820	08/10/2020	11815170
Certified with Return Receipt (Signature)	9414811898765829350026	Good News Minerals, LLC	PO Box 50820	Midland	TX	79710-0820	08/10/2020	11815171
Certified with Return Receipt (Signature)	9414811898765829350002	Black Mountain Operating, LLC	500 Main St Ste 1200	Fort Worth	TX	76102-3926	08/10/2020	11815172
Certified with Return Receipt (Signature)	9414811898765829350095	Marathon Oil Permian, LLC	5555 San Felipe St	Houston	TX	77056-2701	08/10/2020	11815173
Certified with Return Receipt (Signature)	9414811898765829350040	Kimbell Art Foundation	301 Commerce St Ste 2240	Fort Worth	TX	76102-4122	08/10/2020	11815174
Certified with Return Receipt (Signature)	9414811898765829350088	c/o Ben J. Fortson, Jr., Trustee	301 Commerce St Ste 2900	Fort Worth	TX	76102-4152	08/10/2020	11815175
Certified with Return Receipt (Signature)	9414811898765829350033	CCB 1998 Trust c/o Ben J. Fortson, Jr., Trustee	301 Commerce St Ste 2900	Fort Worth	TX	76102-4152	08/10/2020	11815176
Certified with Return Receipt (Signature)	9414811898765829350071	DCB 1998 Trust c/o Ben J. Fortson, Jr., Trustee	301 Commerce St Ste 2900	Fort Worth	TX	76102-4152	08/10/2020	11815177
Certified with Return Receipt (Signature)	9414811898765829350415	Robert C. Grable c/o Bank One, as Agent	PO Box 99084	Fort Worth	TX	76199-0084	08/10/2020	11815178
Certified with Return Receipt (Signature)	9414811898765829350453	Bill Burton c/o Bank One, as Agent	PO Box 99084	Fort Worth	TX	76199-0084	08/10/2020	11815179
Certified with Return Receipt (Signature)	9414811898765829350460	Sundance Minerals	PO Box 17744	Fort Worth	TX	76102-0744	08/10/2020	11815180
Certified with Return Receipt (Signature)	9414811898765829350422	Cyprus Gas Corporation 9100 East Mineral Circle	PO Box 3299	Englewood	CO	80155	08/10/2020	11815181
Certified with Return Receipt (Signature)	9414811898765829350408	Truman T. Sanders, Jr., Doralea S Bean, Personal Representative	PO Box 550	Roswell	NM	88202-0550	08/10/2020	11815182
Certified with Return Receipt (Signature)	9414811898765829350491	Linda Coffman	230 Montgomery Dr	Grand Junction	CO	81503-2257	08/10/2020	11815183
Certified with Return Receipt (Signature)	9414811898765829350446	Jennifer D. Pearson	3201 Cedar Falls Dr.	Fort Worth	TX	76244	08/10/2020	11815184
Certified with Return Receipt (Signature)	9414811898765829350484	Leslie Sindt	206 Moonlight Trl	Stephenville	TX	76401-2138	08/10/2020	11815185
Certified with Return Receipt (Signature)	9414811898765829350477	Ben J. Fortson III, Trustee of the Ben J. Fortson III Childrens Trust	301 Commerce St Ste 2900	Fort Worth	TX	76102-4152	08/10/2020	11815187
Certified with Return Receipt (Signature)	9414811898765829350552	Ann Norris	908 Wicket Ct	Tyler	TX	75703-1411	08/10/2020	11815189
Certified with Return Receipt (Signature)	9414811898765829350521	BMW Investments, LP	1807 Judson Rd	Longview	TX	75605-4710	08/10/2020	11815191
Certified with Return Receipt (Signature)	9414811898765829350507	ENK3 Minerals, LP	121 S Broadway Ave Ste 708	Tyler	TX	75702-7210	08/10/2020	11815192
Certified with Return Receipt (Signature)	9414811898765829350590	Frank J. Hughey	PO Box 907	Whitehouse	TX	75791-0907	08/10/2020	11815193
Certified with Return Receipt (Signature)	9414811898765829350583	Hat Mesa Oil Company	40 First Plaza Ctr NW Ste 610	Albuquerque	NM	87102-5801	08/10/2020	11815195
Certified with Return Receipt (Signature)	9414811898765829350538	J Bar Cane, Inc	3660 Highway 41	Stanley	NM	87056-9708	08/10/2020	11815196
Certified with Return Receipt (Signature)	9414811898765829350576	Jubilee Royalty Holdings LLC	9900 Spectrum Dr	Austin	TX	78717-4555	08/10/2020	11815197
Certified with Return Receipt (Signature)	9414811898765829358213	Margie Hart	10212 Cypress Hills Dr	Fort Worth	TX	76108-4950	08/10/2020	11815198
Certified with Return Receipt (Signature)	9414811898765829358251	Michael Gollob Oil Company, Inc	PO Box 6653	Tyler	TX	75711-6653	08/10/2020	11815199
Certified with Return Receipt (Signature)	9414811898765829358268	Norma Arthur	917 S Ash St	Newton	KS	67114-4607	08/10/2020	11815200
Certified with Return Receipt (Signature)	9414811898765829358220	Norma Arthur	PO Box 8352	Corpus Christi	TX	78468-8352	08/10/2020	11815201
Certified with Return Receipt (Signature)	9414811898765829358244	Randy J. Townsend, Trustee of the Anderson Living Trust dated June 26, 1995	8850 Ferguson Rd Apt 3053	Dallas	TX	75228-8345	08/10/2020	11815204
Certified with Return Receipt (Signature)	9414811898765829358282	Richard K. Barr and Beverly Barr	8027 Chalk Knoll Dr	Austin	TX	78735-1706	08/10/2020	11815205
Certified with Return Receipt (Signature)	9414811898765829358237	Richardson Oil Company, LLC	410 Blanning Dr	Dallas	TX	75218-1737	08/10/2020	11815206
Certified with Return Receipt (Signature)	9414811898765829358275	Sam Wolf	PO Box 869	Tyler	TX	75710-0869	08/10/2020	11815207

Ray State Com #123H
 Bone Spring Formation
 W2E2 of Section 36&25-23S-28E
 Eddy County, NM

**NM State Land Office
 Oil, Gas, & Minerals Division**

**STATE/STATE OR
 STATE/FEE**
 Revised March 2017

COMMUNITIZATION AGREEMENT

ONLINE Version

KNOW ALL MEN BY THESE PRESENTS: Well Name: Ray State Com #123H

STATE OF NEW MEXICO)
 SS)

API #: 30 - 015 - 46667

COUNTY OF EDDY)

THAT THIS AGREEMENT [which is NOT to be used for carbon dioxide or helium] is entered into as of **December 5, 2019**, by and between the parties subscribing, ratifying or consenting hereto, such parties hereinafter being referred to as "Parties hereto";

WHEREAS, the Commissioner of Public Lands of the State of New Mexico is authorized by the Legislature, as set forth in Sec. 19-10-53, New Mexico Statutes, Annotated, 1978, in the interest of conservation of oil & gas and the prevention of waste to consent to and approve the development or operation of State Trust Lands under agreements made by lessees of oil & gas leases thereon, jointly or severally with other oil & gas lessees of State Trust Lands, or oil and gas lessees or mineral owners of privately owned or fee lands, for the purpose of pooling or communitizing such lands to form a proration unit or portion thereof, or well-spacing unit, pursuant to any order, rule or regulation of the New Mexico Oil Conservation Division of the New Mexico Energy, Minerals and Natural Resources Department where such agreement provides for the allocation of the production of oil or gas from such pools or communitized areas on an acreage or other basis found by the Commissioner of Public Lands to be fair and equitable.

WHEREAS, the parties hereto, own working, royalty, or other leasehold interests or operating rights under the oil and gas leases and lands subject to this agreement, which leases are more particularly described in the schedule attached hereto, marked Exhibit "A" and made a part hereof, for all purposes; and

WHEREAS, said leases, insofar as they cover the **Bone Spring formation** or pool as defined by the NMOCD, as further described on Exhibit "A" (hereinafter referred to as "said formation") in and under the land hereinafter described cannot be independently developed and operated in conformity with the well spacing program established for such formation in and under said lands; and

WHEREAS, the parties hereto desire to communitize and pool their respective interests in said leases subject to this agreement for the purpose of developing, operating and producing hydrocarbons in the said formation in and under the land hereinafter described subject to the terms hereof.

ONLINE version
 March, 2017

State/State
 State/Fee

1



Ray State Com #123H
Bone Spring Formation
W2E2 of Section 36&25-23S-28E
Eddy County, NM

NOW THEREFORE, in consideration of the premises and the mutual advantages to the parties hereto, it is mutually covenanted and agreed by and between the undersigned as follows:

1. The lands covered by this agreement (hereinafter referred to as the "communitized area") are described as follows:

Subdivisions W2E2

of Sect(s) **25&36**, Twnshp **23S**, Rng **28E**, NMPM **Eddy County, NM**

Containing **320** acres, more or less. It is the judgment of the parties hereto that the communitization, pooling and consolidation of the aforesaid land into a single unit for the development and production of hydrocarbons from the said formation in and under said land is necessary and advisable in order to properly develop and produce the hydrocarbons in the said formation beneath the said land in accordance with the well spacing rules of the Oil Conservation Division of the New Mexico Energy, Minerals and Natural Resources Department, and in order to promote the conservation of the hydrocarbons in and that may be produced from said formation in and under said lands, and would be in the public interest;

AND, for the purposes aforesaid, the parties hereto do hereby communitize for proration or spacing purposes only the leases and/or depths described in Exhibit "A" hereto insofar as they cover hydrocarbons within and that may be produced from the said formation (hereinafter referred to as "communitized substances") beneath the above-described land, into a single communitization, for the development, production, operation and conservation of the hydrocarbons in said formation beneath said lands.

Attached hereto and made a part of this agreement for all purposes, is Exhibit A showing the acreage, depths communitized and ownership (Lessees of Record) of all leases within the communitized area.

2. The communitized area shall be developed and operated as an entirety with the understanding and agreement between the parties hereto that all communitized substances produced therefrom shall be allocated among the leases described in Exhibit "A" hereto in the proportion that the number of surface acres covered by each of such leases and included within the communitized area bears to the total number of acres contained in the communitized area.
3. Subject to Paragraph 4, the royalties payable on communitized substances allocated to the individual leases and the rentals provided for in said leases shall be determined and paid in the manner and on the basis prescribed in each of said leases. Except as provided for under the terms and provisions of the leases described in Exhibit "A" hereto or as herein provided to the contrary, the payment of rentals under the terms of said leases shall not be affected by this agreement; and except as herein modified and changed or heretofore amended, the oil and gas leases subject to this agreement shall remain in full force and effect as originally issued and amended.

Ray State Com #123H
Bone Spring Formation
W2E2 of Section 36&25-23S-28E
Eddy County, NM

4. **Matador Production Company** shall be the Operator of the said communitized area and all matters of operation shall be determined and performed by **Matador Production Company**.

5. The State of New Mexico hereafter is entitled to the right to take in kind its share for the communitized substances allocated to such tract, and Operator shall make deliveries of such royalty share taken in kind in conformity with applicable contracts, laws, and regulations.

6. There shall be no obligation upon the parties hereto to offset any well or wells situated on the tracts of land comprising the communitized area, nor shall the Operator be required to measure separately the communitized substances by reason of the diverse ownership of the separate tracts of land comprising the said communitized area; provided, however, that the parties hereto shall not be released from their obligation to protect the communitized area from drainage of communitized substances by wells which may be drilled within offset distance (as that term is defined) of the communitized area.

7. The commencement, completion, and continued operation or production of a well or wells of communitized substances on the communitized area shall be considered as the commencement, completion, continued operation or production as to each of the leases described in Exhibit "A" hereto.

8. The production of communitized substances and disposal thereof shall be in conformity with the allocations, allotments, and quotas made or fixed by any duly authorized person or regulatory body under applicable Federal or State laws. This agreement shall be subject to all applicable Federal and State laws, executive orders, rules and regulations affecting the performance of the provisions hereof, and no party hereto shall suffer a forfeiture or be liable in damages for failure to comply with any of the provisions of this agreement if compliance is prevented by or if such failure results from compliance with any such laws, orders, rules and regulations.

9. This agreement shall be effective as of the date hereinabove written upon execution by the necessary parties, notwithstanding the date of execution, and upon approval by the Commissioner of Public Lands, shall remain in full force and effect for a period of one year from the date hereof and as long thereafter as communitized substances are produced from the communitized area in paying quantities; provided, that this agreement shall not expire if there is a well capable of producing gas in paying quantities located upon some part of the communitized area, if such a well is shut-in due to the inability of the Operator to obtain a pipeline connection or to market the gas therefrom, and if either: (a) a shut-in royalty has been timely and properly paid pursuant to the provisions of one of the State of New Mexico oil and gas leases covering lands subject to this agreement so as to prevent the expiration of such lease; or (b) each of the State of New Mexico oil and gas leases covering lands subject to this agreement is in its primary term (if a five-year lease), or in its primary or secondary term (if a ten-year lease), or is held by production from another well. Provided further, however, that prior to production in paying quantities from the communitized area, and upon fulfillment of all requirements of the Commissioner of Public Lands with respect to any dry hole or abandoned well drilled upon the communitized area, this agreement may be

Ray State Com #123H
Bone Spring Formation
W2E2 of Section 36&25-23S-28E
Eddy County, NM

terminated at any time by mutual agreement of the parties hereto. This agreement shall not terminate upon cessation of production of communitized substances if, within sixty (60) days thereafter, reworking or drilling operations on the communitized area are commenced and are thereafter conducted with reasonable diligence. As to State Trust Lands, written notice of intention to commence such operations shall be filed with the Commissioner of Public Lands within thirty (30) days after the cessation of such production, and a report of the status of such operations shall be made by the Operator to the Commissioner every thirty (30) days, and the cessation of such operations for more than twenty (20) consecutive days shall be considered as an abandonment of such operations as to any lease from the State of New Mexico included in this agreement.

10. Operator will furnish the Oil Conservation Division of the New Mexico Energy, Minerals and Natural Resources Department, and the Commissioner of Public Lands of the State of New Mexico, with any and all reports, statements, notices and well logs and records which may be required under the laws and regulations of the State of New Mexico.

11. It is agreed between the parties hereto that the Commissioner of Public Lands, or his duly authorized representatives, shall have the right of supervision over all operations under the communitized area to the same extent and degree as provided in the oil and gas leases described in Exhibit "A" hereto and in the applicable oil and gas regulations of the State of New Mexico.

12. If any order of the Oil Conservation Division of the New Mexico Energy Minerals and Natural Resources Department, upon which this agreement is predicated or based is in anyway changed or modified, then in such event said agreement is likewise modified to conform thereto.

13. This agreement may be executed in any number of counterparts, no one of which needs to be executed by all parties, or may be ratified or consented to by separate instruments, in writing, specifically referring hereto, and shall be binding upon all parties who have executed such a counterpart, ratification or consent hereto with the same force and effect as if all parties had signed the same document.

14. This agreement shall be binding upon the parties hereto and shall extend to and be binding upon their respective heirs, executors, administrators, successors and assigns.

IN WITNESS WHEREOF, the parties hereto have executed this agreement as of the day and year first above written.

Ray State Com #123H
Bone Spring Formation
W2E2 of Section 36&25-23S-28E
Eddy County, NM

OPERATOR: Matador Production Company

BY: Craig N. Adams – Executive Vice President
Name and Title of Authorized Agent

Signature of Authorized Agent

Acknowledgment in an Individual Capacity

State of)
SS)
County of)

This instrument was acknowledged before me on _____ Date

By _____
Name(s) of Person(s)

(Seal)

Signature of Notarial Officer

My commission expires: _____

Acknowledgment in an Representative Capacity

State of)
SS)
County of)

This instrument was acknowledged before me on _____ Date

By _____
Name(s) of Person(s)

(Seal)

Signature of Notarial Officer

My commission expires: _____

5

5

7

8

9

10

Ray State Com #123H
 Bone Spring Formation
 W2E2 of Section 36&25-23S-28E
 Eddy County, NM

EXHIBIT A

Attached to and made a part of that Communitization Agreement dated **December 5, 2019**

the Subdivisions **W2E2**

Sect **25&36**, Twnshp **23 South**, Rnge, **28 East**, NMPM, Eddy County, NM

OPERATOR of Communitized Area: **W2E2 of Section 25 & 36, Township 23 South, Range 28 East, Eddy County, NM.**

DESCRIPTION OF LEASES COMMITTED:

TRACT NO. 1

Lessor:	Fee Leases
Lessee of Record:	MRC Permian Company
	Chevron U.S.A. Inc.
	Cyprus Gas Corporation (Compulsory Pooled)
	Highland (Texas) Energy Company
	Hillier, LLC (Compulsory Pooled)
	Marathon Oil Permian LLC
	Devon Energy Production
Serial No. of Lease:	N/A
Date of Lease:	N/A
Description of Lands Committed:	W2E2 of Section 25, Township 23 South, Range 28 East, Eddy County, NM
No. of Acres:	160

TRACT NO. 2

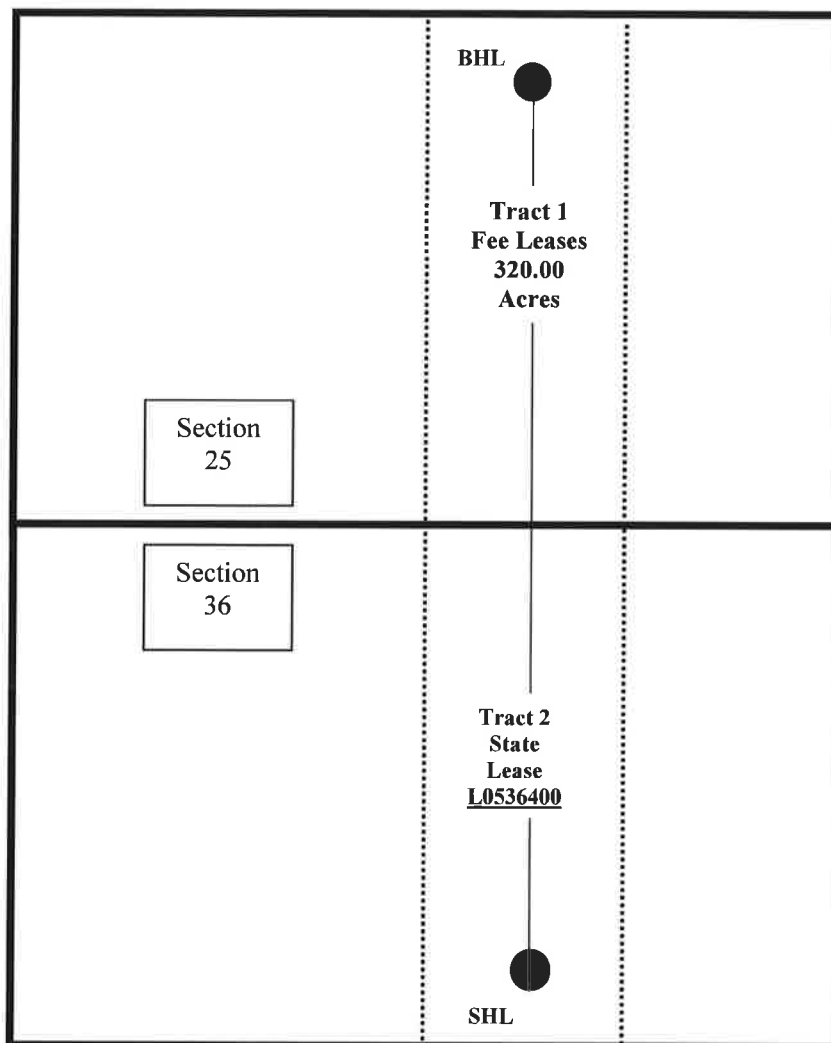
Lessor:	State of New Mexico
Lessee of Record:	Read & Stevens, Inc.
Serial No. of Lease:	LO5364004
Date of Lease:	4/1/1971
Description of Lands Committed:	W2E2 of Section 36, Township 23 South, Range 28 East, Eddy County, NM
No. of Acres:	160

Ray State Com #123H
Bone Spring Formation
W2E2 of Section 36&25-23S-28E
Eddy County, NM

EXHIBIT B

To Communitization Agreement dated December 5, 2019

Plat of communitized area covering the: Subdivisions W/2E/2 of Section 25 & the W/2E/2 of Section 36 of Sect. 25 & 36, T 23S, R 28E, NMPM, Eddy County, NM.



Ray State Com #123H
Bone Spring Formation
W2E2 of Section 36&25-23S-28E
Eddy County, NM

RECAPITULATION

Tract number	Number of Acres Committed	Percentage of Interest in Communitized Area
No. 1	160	50.00%
No. 2	160	50.00%
TOTAL	320	100.00%

**NM State Land Office
Oil, Gas, & Minerals Division**

**STATE/FEDERAL OR
STATE/FEDERAL/FEE**
Revised Feb. 2013

ONLINE Version
COMMUNITIZATION AGREEMENT

Contract No. _____
Well Name: E/2 Ray State Com – Wolfcamp

THIS AGREEMENT, entered into as of the date shown in Section 10 hereof by and between the parties subscribing, ratifying, or consenting hereto, such parties being hereinafter referred to as "parties hereto,"
W I T N E S S E T H:

WHEREAS, the Act of February 25, 1920, 41 Stat. 437, as amended and supplemented, authorizes communitization or drilling agreements communitizing or pooling a federal oil and gas lease, or any portions thereof, with other lands, whether or not owned by the United States, when separate tracts under such federal lease cannot be independently developed and operated in conformity with an established well-spacing program for the field or area, and such communitization or pooling is determined to be in the public interest; and,

WHEREAS, the Commissioner of Public Lands of the State of New Mexico, herein called "the Commissioner", is authorized to consent to and approve agreements pooling state oil and gas leases or any portion thereof, when separate tracts under such state leases cannot be independently developed and operated economically in conformity with well-spacing and gas proration rules and regulations established for the field or area and such pooling is determined to be in the public interest; and,

WHEREAS, the parties hereto own working, royalty, or other leasehold interests, or operating rights under the oil and gas leases and land subject to this agreement which cannot be independently developed and operated in conformity with the well-spacing program established for the field or area in which said lands are located; and,

WHEREAS, the parties hereto desire to communitize and pool their respective mineral interests in lands subject to this agreement for the purpose of developing and producing communitized substances in accordance with the terms and conditions of the agreement;

NOW, THEREFORE, in consideration of the premises and the mutual advantages to the parties hereto, it is mutually covenanted and agreed by and between the parties hereto as follows:

1. The lands covered by this agreement (hereinafter referred to as "communitized area") are described as follows:

Subdivisions E/2 of Section 25 & the E/2 of Section 36,
Sect 25&36, T 23S, R 28E, NMPM Eddy County NM
containing 640 acres, more or less, and this agreement shall include only the
Wolfcamp formation underlying said lands and the hydrocarbons (hereinafter referred to as
"communitized substances") producible from such formation.

2. Attached hereto, and made a part of this agreement for all purposes, is Exhibit "B" designating the operator of the communitized area and showing the acreage, percentage, and ownership of oil and gas interests in all lands within the communitized area, and the authorization, if any, for communitizing or pooling any patented or fee lands within the communitized area.
3. All matters of operation shall be governed by the operator under and pursuant to the terms and provisions of this agreement. A successor operator may be designated by the owners of the working interest in the communitized area and three (3) executed copies of a designation of successor operator shall be filed with the Authorized Officer and three (3) additional executed copies thereof shall be filed with the Commissioner.
4. Operator shall furnish the Secretary of the Interior, or his authorized representative, and the Commissioner, or his authorized representative, with a log and history of any well drilled on the communitized area, monthly reports of operations, statements of oil and gas sales and royalties, and such other reports as are deemed necessary to compute monthly the royalty due the United States and the State of New Mexico, as specified in the applicable oil and gas operating regulations.
5. The communitized area shall be developed and operated as an entirety with the understanding and agreement between the parties hereto that all communitized substances produced therefrom shall be allocated among the leaseholds comprising said area in the proportion that the acreage interest of leasehold bears to the entire acreage interest committed to this agreement.
6. The royalties payable on communitized substances allocated to the individual leases comprising the communitized area and the rentals provided for in said leases shall be determined and paid on the basis prescribed in each of the individual leases. Payments of rentals under the terms of leases subject to this agreement shall not be affected by this agreement except as provided for under the terms and provisions of said leases or as may herein be otherwise provided. Except as herein modified and changed, the oil and gas leases subject to this agreement shall remain in full force and effect as originally made and issued. It is agreed that for any federal lease bearing a sliding-or step-scale rate of royalty, such rate shall be determined separately as to production from each communitization agreement to which such lease may be committed, and separately as to any noncommunitized lease production, provided, however, as to leases where the rate of royalty for gas is based on total lease production per day such rate shall be determined by the sum of all communitized production allocated to such a lease plus any noncommunitized lease production.
7. There shall be no obligation on the lessees to offset any well or wells completed in the same formation as covered by this agreement on separate component tracts into which the communitized area is now or may hereafter be divided, nor shall any lessee be required to measure separately communitized substances by reason of the diverse ownership thereof, but the lessees hereto shall not be released from their obligation to protect said communitized area from drainage of communitized substances by a well or wells which may be drilled offsetting said area.

8. The commencement, completion, continued operation or production of a well or wells for communitized substances on the communitized area shall be construed and considered as the commencement, completion, continued operation or production on each and all of the lands within and comprising said communitized area, and operations or production pursuant to this agreement shall be deemed to be operations or production as to each lease committed hereto.
9. Production of communitized substances and disposal thereof shall be in conformity with allocation, allotments, and quotas made or fixed by any duly authorized person or regulatory body under applicable Federal or State statutes. This agreement shall be subject to all applicable Federal and State laws or executive orders, rules, and regulations, and no party hereto shall suffer a forfeiture or be liable in damages for failure to comply with any of the provisions of this agreement if such compliance is prevented by, or is such failure results from, compliance with any such laws, orders, rules or regulations.
10. The date of this agreement is _____ July _____ Month, 17th Day, 2019 Year, and it shall become effective as of this date or from the onset of production of communitized substances, whichever is earlier upon execution of the necessary parties, notwithstanding the date of execution, and upon approval by the Secretary of Interior, or his duly authorized representative, and by the Commissioner or his duly authorized representative, and shall remain in force and effect for a period of two (2) years and so long thereafter as communitized substances are produced or can be produced from the communitized area in paying quantities; provided, that the two-year term of this agreement will not in itself serve to extend the term of any Federal lease which would otherwise expire during said period; provided further that prior to production in paying quantities from the communitized area and upon fulfillment of all requirements of the Secretary of Interior, or his duly authorized representative, and all requirements of the Commissioner, with respect to any dry hole or abandoned well, this agreement may be terminated at any time by mutual agreement of the parties hereto. This agreement shall not terminate upon cessation of the capability of production if, within sixty (60) days thereafter, reworking or drilling operations on the communitized area are commenced and are thereafter conducted and prosecuted with reasonable diligence. As to lands owned by the State of New Mexico, written notice of intention to commence such operations shall be filed with the Commissioner within thirty (30) days after the cessation of such capability of production, and a report of the status of such operations shall be made by the Operator to the Commissioner every thirty (30) days, and the cessation of such operations for more than twenty (20) consecutive days shall be considered as an abandonment of such operations as to any lease from the State of New Mexico included in this agreement.
11. The covenants herein shall be construed to be covenants running with the land with respect to the communitized interests of the parties hereto and their successors in interest until this agreement terminates, and any grant, transfer, or conveyance of any such land or interest subject hereto, whether voluntary or not, shall be and hereby is conditioned upon the assumption of all obligations hereunder by the grantee, transferee, or other successor in interest, and as to Federal lands shall be subject to approval by the Secretary of the Interior, and as to State of New Mexico lands shall be subject to approval by the Commissioner.

12. It is agreed by the parties hereto that the Secretary of the Interior, or his duly authorized representative, shall have the right of supervision over all operations within the communitized area to the same extent and degree as provided in the oil and gas leases under which the United States of America is lessor, and in the applicable oil and gas operating regulations of the Department of the Interior. It is further agreed between the parties hereto that the Commissioner shall have the right of supervision over all operations to the same extent and degree as provided in the oil and gas leases under which the State of New Mexico is lessor and in the applicable oil and gas statutes and regulations of the State of New Mexico.
13. The agreement shall be binding upon the parties hereto and shall extend to and be binding upon their respective heirs, executors, administrators, successors and assigns.
14. This agreement may be executed in any number of counterparts, no one of which needs to be executed by all parties, or may be ratified or consented to by separate instrument, in writing, specifically referring hereto and shall be binding upon all parties who have executed such a counterpart, ratification or consent hereto with the same force and effect as if all parties had signed the same document.
15. Nondiscrimination: In connection with the performance of work under this agreement, the Operator agrees to comply with all of the provisions of Section 202 (1) to (7) inclusive, of Executive Order 11246 (30 F. R. 12319), as amended which are hereby incorporated by reference in this agreement.

IN WITNESS WHEREOF, the parties hereto have executed this agreement as of the day and year first written and have set opposite their respective names the date of execution.

Operator: Matador Production Company

By: Craig N. Adams – Executive Vice President
Name & Title of Authorized Agent

Signature of Authorized Agent

ACKNOWLEDGEMENT

STATE OF TEXAS)

§

COUNTY OF DALLAS)

§

This instrument was acknowledged before me on _____, 2019, by **Craig N. Adams, as Executive Vice President**, for **Matador Production Company** on behalf of said corporation.

Signature

Name (Print)

My commission expires _____

**WORKING INTEREST OWNERS
AND/OR LESSEES OF RECORD**

OWNER

By: _____

Print Name

Date: _____

Acknowledgment in an Individual Capacity

State of _____)

County of _____) ss)

This instrument was acknowledged before me on _____
DATE

By _____
Name(s) of Person(s)

(Seal)

Signature of Notarial Officer

My commission expires: _____

Acknowledgment in a Representative Capacity

State of _____)

County of _____) ss)

This instrument was acknowledged before me on _____
DATE

By _____
Name(s) of Person(s)

as _____ of _____

Type of authority, e.g., officer, trustee, etc

Name of party on behalf of whom instrument was executed

(Seal)

Signature of Notarial Officer

My commission expires: _____

EXHIBIT A

To Communitization Agreement dated July 17, 2019

Plat of communitized area covering the: Subdivisions E/2 of Section 25 & the E/2 of Section 36 of Sect. 25 & 36, T 23S, R 28E, NMPM, Eddy County, NM.

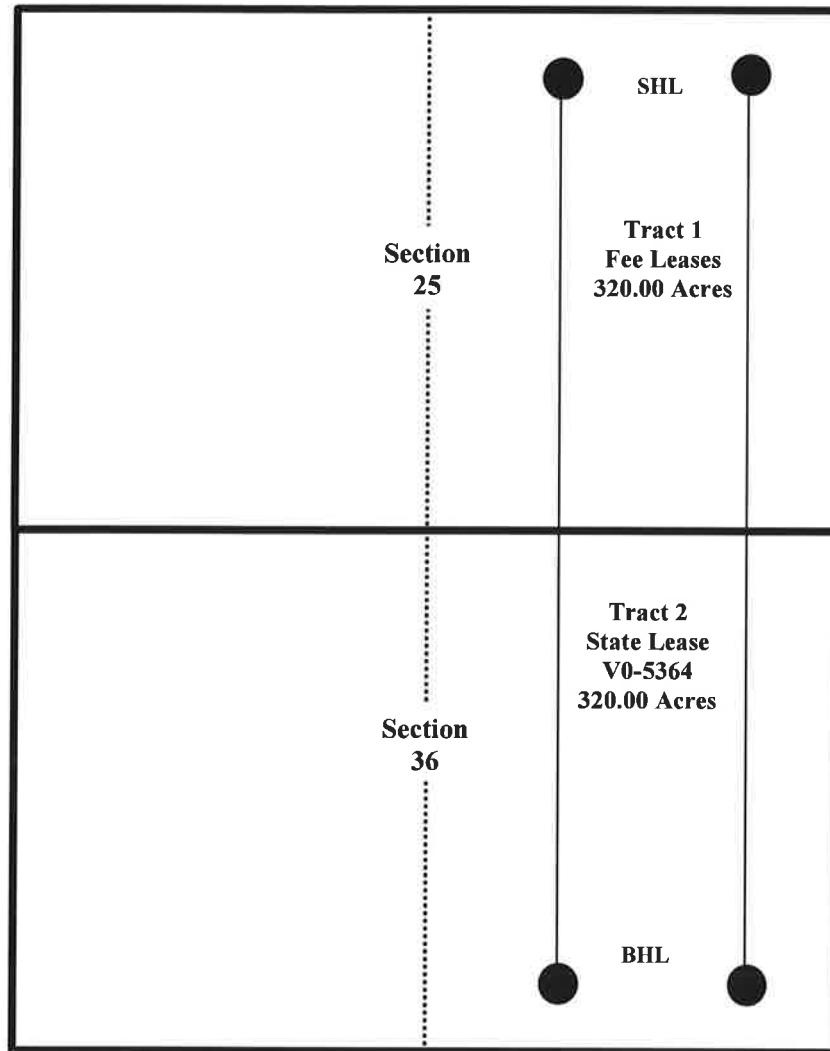


EXHIBIT B

To Communitization Agreement dated July 31 20 19, embracing the
 Subdivisions E/2 SE/4 of Section 4 & E/2 E/2 of Section 9
 of Section 4 & 9, T 23S, R 35E, N.M.P.M., Lea County, NM

Operator of Communitized Area: Matador Production Company

DESCRIPTION OF LEASES COMMITTED**TRACT NO. 1**

Lease Serial No.: Fee Leases
 Lease Date: _____
 Lease Term: _____
 Lessor: _____
 Original Lessee: _____
 Present Lessee: _____
 Description of Land Committed: Subdivisions E/2 of Section 25,
 Sect 25, Twp 23S, Rng 28E NMPM, Eddy County, NM
 Number of Acres: 320.00
 Royalty Rate: _____
 Name and Percent ORRI Owners: _____
 Name and Percent WI Owners: _____

TRACT NO. 2

Lease Serial No.: V0-5364
 Lease Date: 4/1/1971
 Lease Term: _____
 Lessor: State of New Mexico
 Original Lessee: LD Williams and Glen B. Williams
 Present Lessee: Read & Stevens, Inc
 Description of Land Committed: Subdivisions E/2 of Section 36,
 Sect 36, Twp 23S, Rng 28E, NMPM, Eddy County, NM
 Number of Acres: 320.00
 Royalty Rate: _____
 Name and Percent ORRI Owners: _____
 Name and Percent WI Owners: _____

RECAPITULATION

Tract numbers	Number of Acres Committed	Percentage of Interest in Communitized Area
Tract No.1	<u>320</u>	<u>50.00%</u>
Tract No.2	<u>320</u>	<u>50.00%</u>
Tract No.3	<u></u>	<u></u>
Tract No.4	<u></u>	<u></u>