

# Additional Information

Revised WBD 11/12/20

Application for Authorization to Inject  
Well Name: White SWD #1

### III – Well Data *(The Wellbore Diagram is included as Attachment 1)*

A.

#### (1) General Well Information:

Operator: Lilystream Water Solutions  
Lease Name & Well Number: White SWD #1  
Location Footage Calls: 1,070 FSL & 290 FWL  
Legal Location: Unit Letter M, S32 T20S R30E  
Proposed Injection Interval: 13,320 – 14,270'  
County: Eddy

#### (2) Casing Information:

Type	Hole Size	Casing Size	Casing Weight	Setting Depth	Sacks of Cement	Estimated TOC	Method Determined
Surface	30"	26"	202.3 lb/ft	400'	520	Surface	Circulation
Intermediate	24"	20"	94 lb/ft	1,530'	1,660	Surface	Circulation
2 <sup>nd</sup> Intermediate	17-1/2"	13-3/8"	80.7 lb/ft	3,225'	2,570	Surface	Circulation
Production	12-1/4"	9-5/8"	53.5 lb/ft	10,803'	3,342	Surface	Circulation
Liner	8.5"	7.625"	39 lb/ft	9,960' – 13,320'	265	9,960'	CBL

Note: DV Tool set at approximately 6,808'.

#### (3) Tubing Information:

5.5" tapered to 5.0" (composite weight string) internally plastic coated tubing with setting depth of 13,220'

(4) **Packer Information:** Baker Hughes S.C.-2 or equivalent packer set at 13,220'

B.

(1) **Injection Formation Name:** Devonian-Silurian

**Pool Name:** SWD; DEVONIAN - SILURIAN

**Pool Code:** 97869

(2) **Injection Interval:** Open hole injection between 13,220' – 14,270'

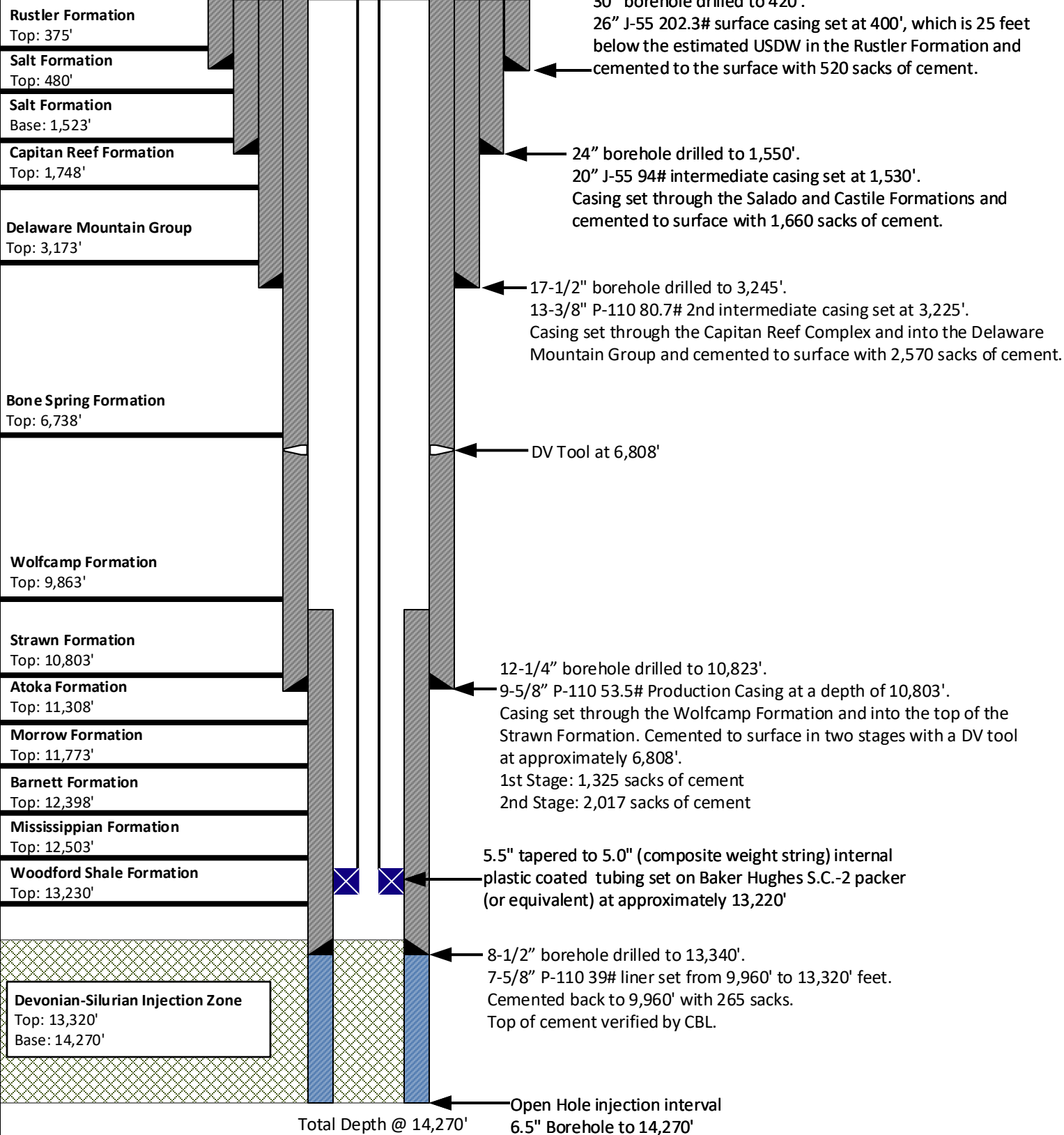
(3) **Drilling Purpose:** New Drill for Salt Water Disposal

(4) **Other Perforated Intervals:** No other perforated intervals exist.

(5) **Overlying Oil and Gas Zones:** No overlying oil and gas zones exist.

- Delaware Mountain Group (3,173')
- Bone Spring Formation (6,738')
- Wolfcamp Formation (9,863')
- Atoka Formation (11,308')
- Morrow Formation (11,773')

(6) **Underlying Oil and Gas Zones:** No underlying oil and gas zones exist.



*Note: Listed depths and cement volumes are approximates based on available information. All cement calculations use yield of 1.18 cubic foot per sack and include 40% excess.*

NOT TO SCALE

Prepared by:

**ALL**CONSULTING

Drawn by: Joshua Ticknor

Project Manager:  
Dan Arthur

Date: 11/03/2020

Lilystream Water Solutions

White SWD #1

1,070' FSL & 290' FWL, UL M, Sec. 32, T20S, R30E  
Eddy County, NM