

3R - 212

AGWMR

2006

3R212

RECEIVED



MAR 06 2007

Oil Conservation Division
Environmental Bureau

El Paso Tennessee
Pipeline Company

San Juan Basin Pit Program
Groundwater Sites Project

Final 2006 Annual Report
Federal Sites (Volume 1)

March 2007



MWH

1801 California Street, Suite 2900
Denver, Colorado 80202

2006 ANNUAL GROUNDWATER REPORT
FEDERAL SITES VOLUME I

RECEIVED

EL PASO TENNESSEE PIPELINE COMPANY

MAR 06 2007

Oil Conservation Division
Environmental Bureau

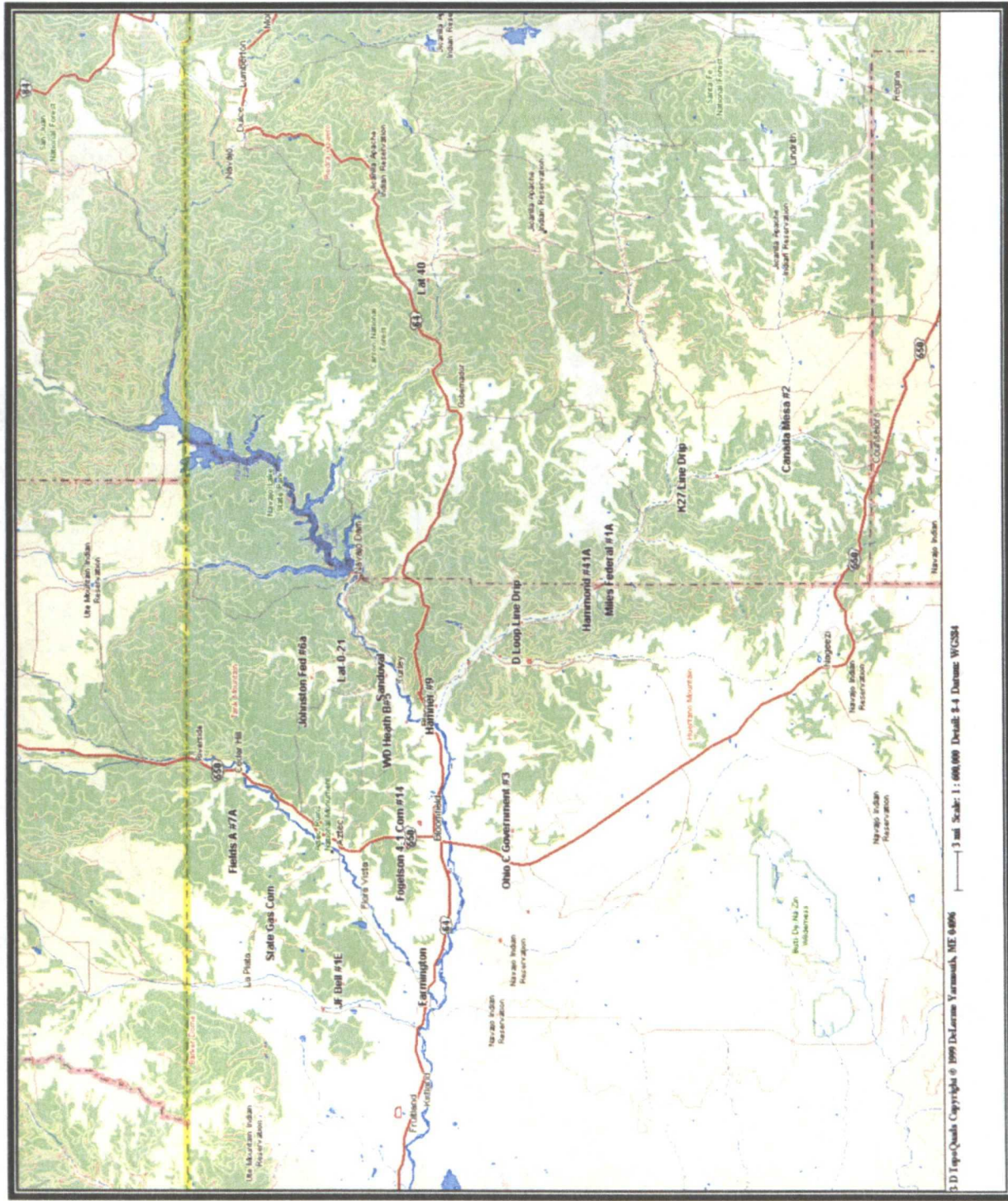
TABLE OF CONTENTS

METER or LINE ID	SITE NAME	TOWNSHIP	RANGE	SECTION	UNIT
89961	Fields A#7A	32N	11W	34	E
89232	Johnston Fed #6A	31N	09W	35	F
94715	James F. Bell #1E	30N	13W	10	P
89620	Sandoval GC A #1A	30N	09W	35	C
LD151	Lat 0-21 Line Drip	30N	09W	12	O
73220	Fogelson 4-1 Com. #14	29N	11W	4	P
97213	Hamner #9	29N	09W	20	A
LD174	LAT L 40	28N	04W	13	H
89894	Hammond #41A	27N	08W	25	O
94810	Miles Fed 1A	26N	07W	5	F
LD072	K27 LD072	25N	06W	4	E
87640	Canada Mesa #2	24N	06W	24	I
70194	Johnston Fed #4	31N	09W	33	H



MWH

Federal Groundwater Site Map



3-D Topo-Quadr Copyright © 1999 DeLorme Vermont, ME 05006 1" = 1 mi Scale: 1 : 600,000 Detail: 8.4" Distance: WC284

LIST OF ACRONYMS

B	benzene
btoc	below top of casing
E	ethylbenzene
EPTPC	El Paso Tennessee Pipeline Company
ft	foot/feet
GWEL	groundwater elevation
ID	identification
MW	monitoring well
PSH	phase-separated hydrocarbons
NMWQCC	New Mexico Water Quality Control Commission
T	toluene
TOC	top of casing
NA	not applicable
NE	not established
NM	not measured
NMOCD	New Mexico Oil Conservation Division
NS	not sampled
ORC	oxygen-releasing compound
ppb	parts per billion
µg/L	micrograms per liter
X	total xylenes

**EPTPC GROUNDWATER SITES
2006 ANNUAL GROUNDWATER REPORT**

**Lat L-40
Meter Code: LD174**

SITE DETAILS

Legal Description:	Town: 28N	Range: 4W	Sec: 13	Unit: H
NMOCD Haz Ranking:	20	Land Type: Federal	Operator: Enterprise	

PREVIOUS ACTIVITIES

Site Assessment:	2/95	Excavation:	3/95	Soil Boring:	9/95
Monitor Well:	9/95	Geoprobe:	NA	Additional MWs:	*
Downgradient MWs:	*	Replace MW:	NA	Quarterly Initiated:	NA
ORC Nutrient Injection:	NA	Re- Excavation:	NA	PSH Removal Initiated:	1/98
Annual Initiated:	NA	Quarterly Resumed:	NA		

* Attempts were made to install additional monitoring wells at this site during July 2000.
All efforts were met with refusal.

SUMMARY OF 2006 ACTIVITIES

MW-1: Quarterly free-product recovery and water level monitoring were performed.

Site-Wide Activities: No other activities were performed at this site in 2006.

SITE MAP

A site map (2006) is attached in Figure 1.

SUMMARY TABLES AND GRAPHS

- Historical analytical data and groundwater elevation data are presented graphically in Figure 2.
- Free-product recovery data from 2006 are included in Table 1, and historic data are also presented graphically in Figure 3.
- Field documentation is presented in Attachment 1 (included on CD).

**EPTPC GROUNDWATER SITES
2006 ANNUAL GROUNDWATER REPORT**

**Lat L-40
Meter Code: LD174**

GEOLOGIC LOGS AND WELL COMPLETION DIAGRAMS

No subsurface activities were performed at this site during 2006.

DISPOSITION OF GENERATED WASTES

All purge water was taken to the El Paso Natural Gas Rio Vista Compressor Station. Recovered free-product is stored in a 55 gallon drum and periodically picked up by Mesa Oil for recycling.

ISOCONCENTRATION MAPS

No isoconcentration maps were prepared for this site; however, the attached site map presents the water level data collected during 2006.

CONCLUSIONS

- Free-product recovery efforts at MW-1 resulted in removal of approximately 0.09 gallons of free-phase hydrocarbons during 2006, bringing the cumulative total recovered to approximately 26.10 gallons since 2000. Free-product removal in 2004 totaled 0.45 gallons, compared to 0.10 gallons in 2005, and 0.09 gallons in 2006. Product accumulation is clearly decreasing.

RECOMMENDATIONS

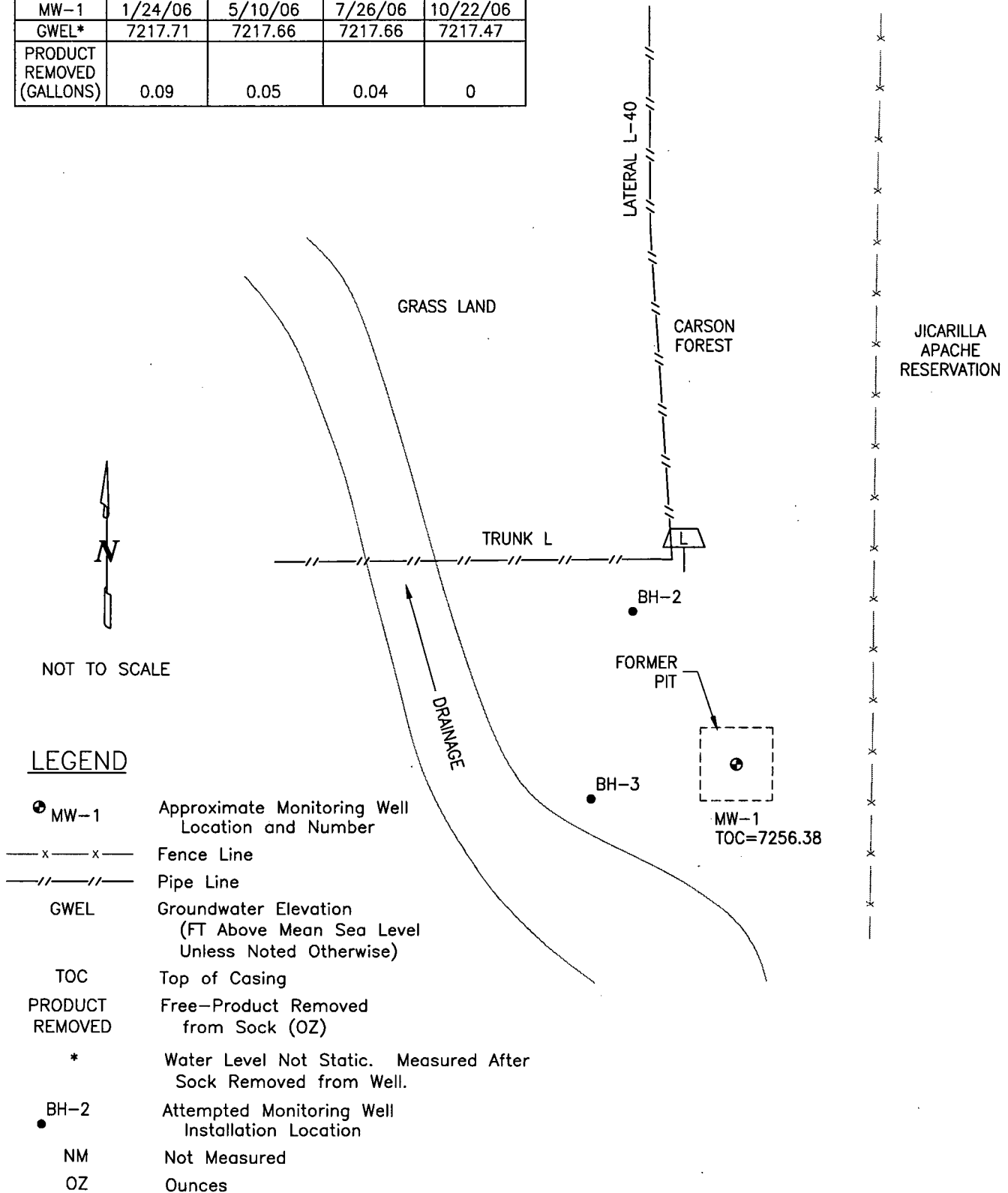
- EPTPC will continue quarterly free-product recovery at MW-1 using the oil absorbent sock; however, the frequency of monitoring may be adjusted based on the amount of product recovered during the monitoring visits.
- Once free-product recovery efforts are completed at MW-1, this well will be sampled on an annual basis until sample results approach closure criteria. The well will then be scheduled for quarterly sampling until closure criteria are met.

TABLE 1

SUMMARY OF FREE PRODUCT REMOVAL
LAT L-40 (METER #LD174)

Site Name	Monitoring Well	Removal Date	Depth to Product (feet bgs)	Depth to Water (feet bgs)	Product Thickness (feet)	Volume of Product Removed (gallons)	Cumulative Volume of Product Removed (gallons)
Lat L-40	MW-1	3/12/02	38.42	38.76	0.34	0.75	22.73
Lat L-40	MW-1	4/3/02	38.39	38.66	0.27	0.25	22.98
Lat L-40	MW-1	5/20/02	38.46	38.56	0.10	0.50	23.48
Lat L-40	MW-1	6/10/02	38.51	38.56	0.05	0.25	23.73
Lat L-40	MW-1	7/19/02		38.64	0.00	0.25	23.98
Lat L-40	MW-1	10/11/02	38.84	38.87	0.03	0.16	24.14
Lat L-40	MW-1	1/23/03		ns	0	0.00	24.14
Lat L-40	MW-1	5/6/03	37.94	37.97	0.03	1.00	25.14
Lat L-40	MW-1	7/17/03		38.95	0	0.20	25.34
Lat L-40	MW-1	10/13/03		39.06	0	0.13	25.47
Lat L-40	MW-1	4/20/04		39.18	0	0.24	25.71
Lat L-40	MW-1	7/27/04		39.22	0	0.13	25.83
Lat L-40	MW-1	10/26/04		39.35	0	0.08	25.91
Lat L-40	MW-1	4/22/05		39.52	0	0.06	25.97
Lat L-40	MW-1	7/19/05		39.34	0	0.03	26.00
Lat L-40	MW-1	10/21/05		39.57	0	0.01	26.01
Lat L-40	MW-1	1/24/06		38.67	0	0.00	26.01
Lat L-40	MW-1	5/10/06		38.72	0	0.05	26.06
Lat L-40	MW-1	7/26/06		38.72	0	0.04	26.10
Lat L-40	MW-1	10/22/06		38.91	0	0.00	26.10

MW-1	1/24/06	5/10/06	7/26/06	10/22/06
GWEL*	7217.71	7217.66	7217.66	7217.47
PRODUCT REMOVED (GALLONS)	0.09	0.05	0.04	0

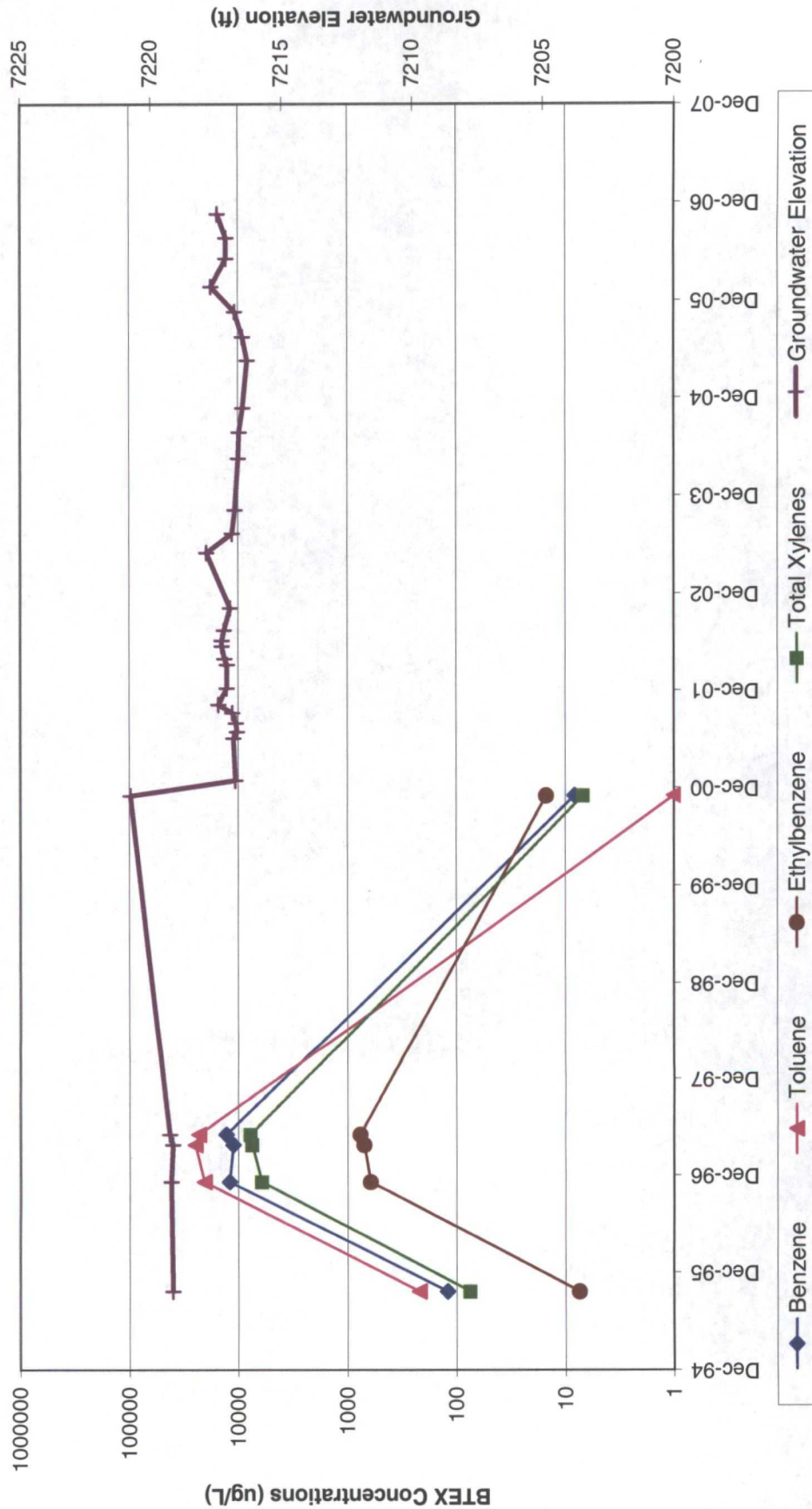


LATERAL L-40 LINE DRIP, LD174
2006

GROUNDWATER SITES
EL PASO TENNESSEE PIPELINE COMPANY

FIGURE 1

FIGURE 2
HISTORIC BTEX CONCENTRATIONS AND GROUNDWATER ELEVATIONS
LAT L40
MW-1



Note: A value of 1 indicated parameter not detected.

FIGURE 3
HISTORIC FREE-PRODUCT RECOVERY
LAT L40
MW-1

